

# TYPE A1

2 Bedroom

Area: 75 sq m / 807 sq ft  
(Inclusive of 7 sq m of Balcony and 4 sq m of AC Ledge)

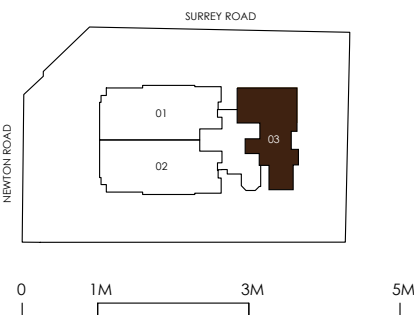
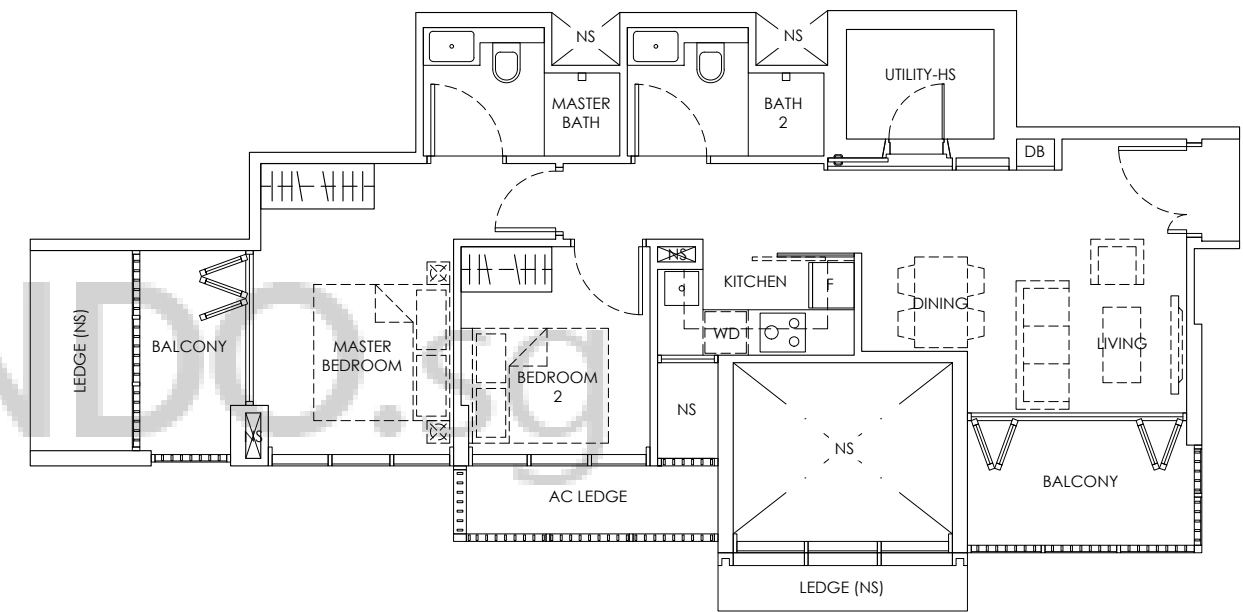
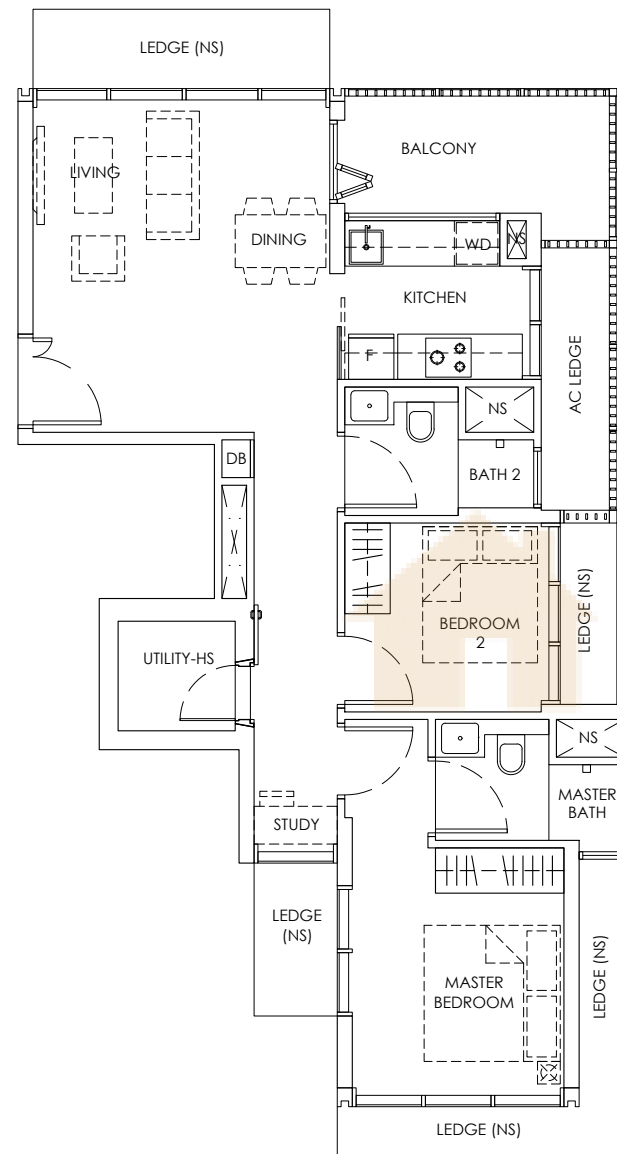
#03 - 03 to #05 - 03  
#08 - 03 to #14 - 03

# TYPE A2

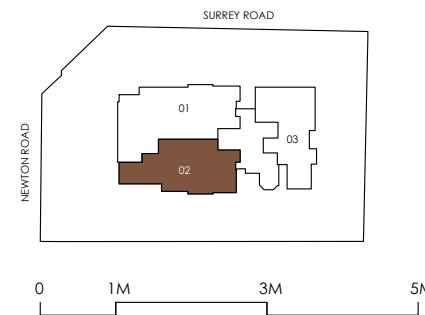
2 Bedroom

Area: 72 sq m / 775 sq ft  
(Inclusive of 10 sq m of Balcony and 4 sq m of AC Ledge)

#11 - 02



LEGEND:  
DB : DISTRIBUTION BOARD AC LEDGE : AIR-CONDITIONER LEDGE WD : WASHER DRYER  
F : FRIDGE NS : NON-STRATA AREA  
HS : HOUSEHOLD SHELTER NS : NON-STRATA AREA (VOID)



LEGEND:  
DB : DISTRIBUTION BOARD AC LEDGE : AIR-CONDITIONER LEDGE WD : WASHER DRYER  
F : FRIDGE NS : NON-STRATA AREA  
HS : HOUSEHOLD SHELTER NS : NON-STRATA AREA (VOID)

Area includes A/C ledge, balcony, PES (where applicable). The above plan and illustration are subject to changes as maybe required by the relevant authorities. Areas are estimated only and subject to final survey. The balcony and PES shall not be enclosed unless with the approved screen. For an illustration of the approved balcony screen, please refer to the diagram annexed hereto as "Annexure 1".

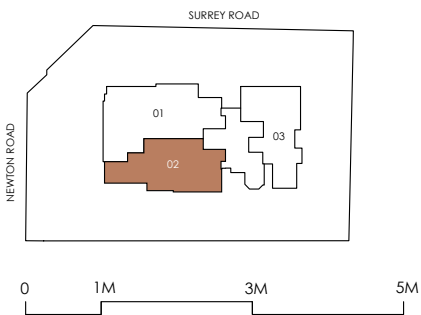
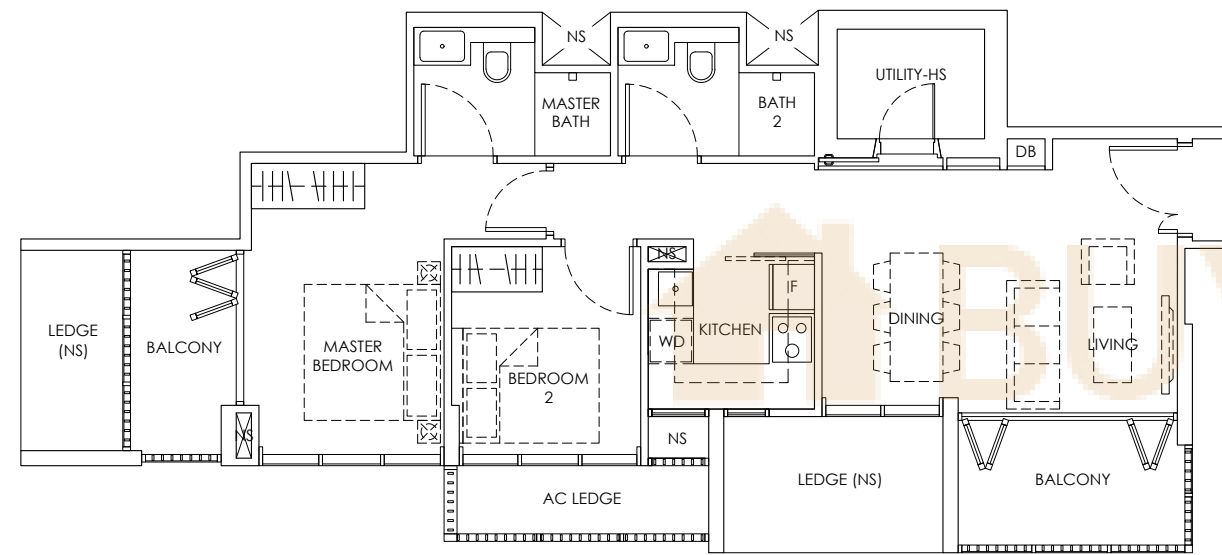
Area includes A/C ledge, balcony, PES (where applicable). The above plan and illustration are subject to changes as maybe required by the relevant authorities. Areas are estimated only and subject to final survey. The balcony and PES shall not be enclosed unless with the approved screen. For an illustration of the approved balcony screen, please refer to the diagram annexed hereto as "Annexure 1".

# TYPE A3

## 2 Bedroom

Area: 75 sq m / 807 sq ft  
(Inclusive of 10 sq m of Balcony and 4 sq m of AC Ledge)

#12 - 02 to #14 - 02



LEGEND:  
DB : DISTRIBUTION BOARD AC LEDGE : AIR-CONDITIONER LEDGE WD : WASHER DRYER  
F : FRIDGE NS : NON-STRATA AREA  
HS : HOUSEHOLD SHELTER

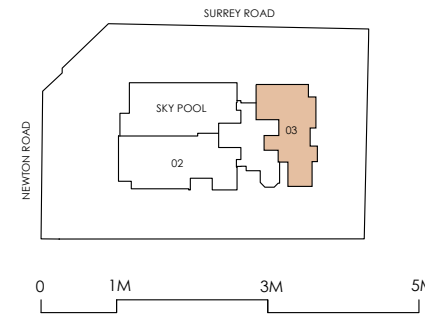
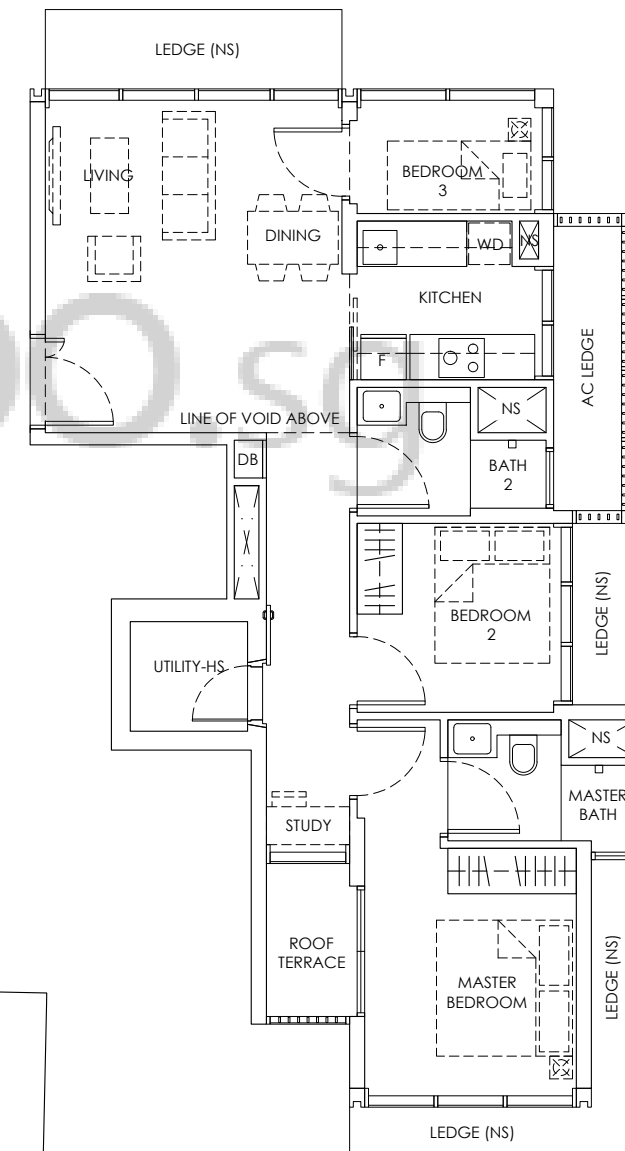
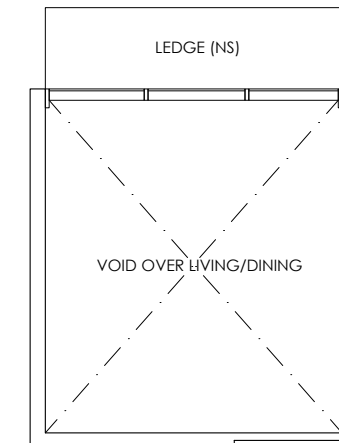
Area includes A/C ledge, balcony, PES (where applicable). The above plan and illustration are subject to changes as maybe required by the relevant authorities. Areas are estimated only and subject to final survey. The balcony and PES shall not be enclosed unless with the approved screen. For an illustration of the approved balcony screen, please refer to the diagram annexed hereto as "Annexure 1".

# TYPE A4

## 3 Bedroom

Area: 95 sq m / 1023 sq ft  
(Inclusive of 3 sq m of Roof Terrace, 4 sq m of AC Ledge and 19 sq m of Void)

#15 - 03



LEGEND:  
DB : DISTRIBUTION BOARD AC LEDGE : AIR-CONDITIONER LEDGE WD : WASHER DRYER  
F : FRIDGE NS : NON-STRATA AREA  
HS : HOUSEHOLD SHELTER

Area includes A/C ledge, balcony, PES (where applicable). The above plan and illustration are subject to changes as maybe required by the relevant authorities. Areas are estimated only and subject to final survey. The balcony and PES shall not be enclosed unless with the approved screen. For an illustration of the approved balcony screen, please refer to the diagram annexed hereto as "Annexure 1".

# TYPE B1

3 Bedroom

Area: 98 sq m / 1055 sq ft  
(Inclusive of 6 sq m of Balcony, 5 sq m of AC Ledge and 8 sq m of Void)

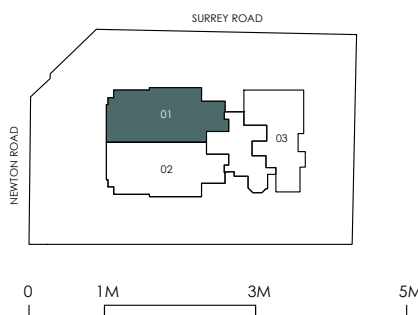
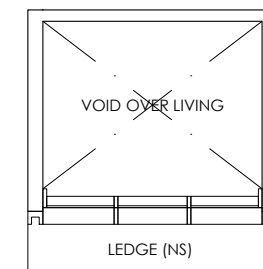
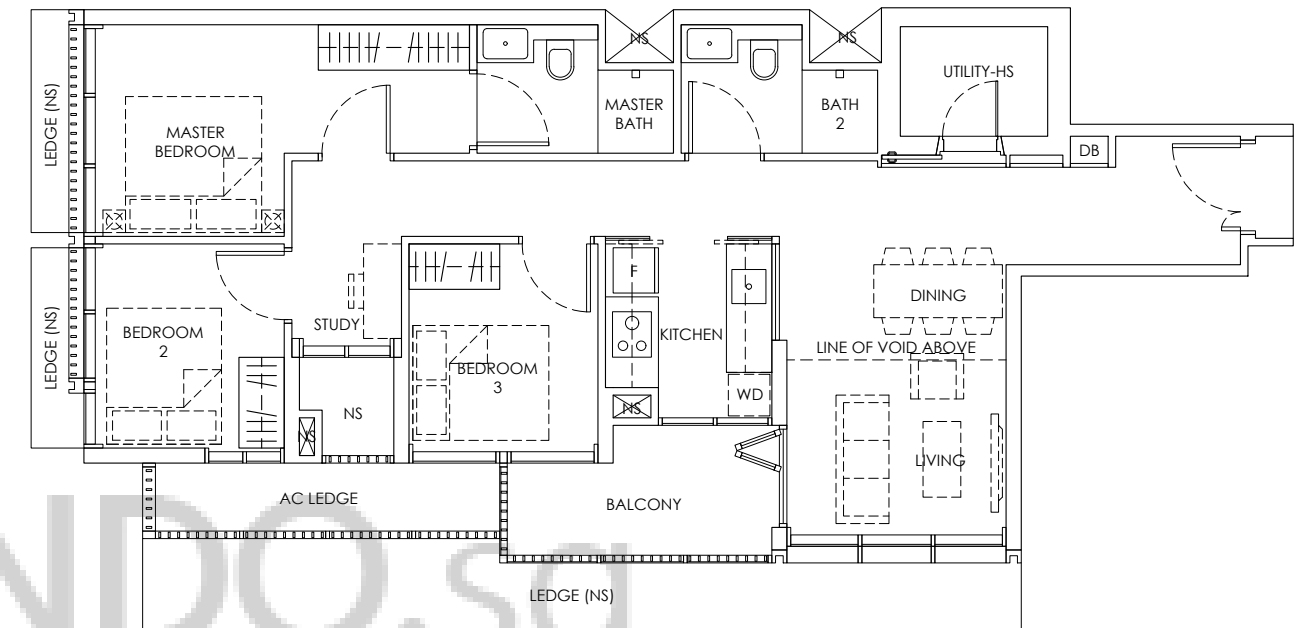
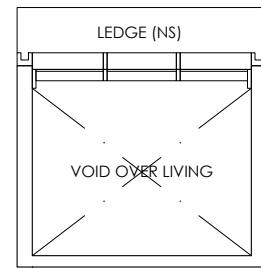
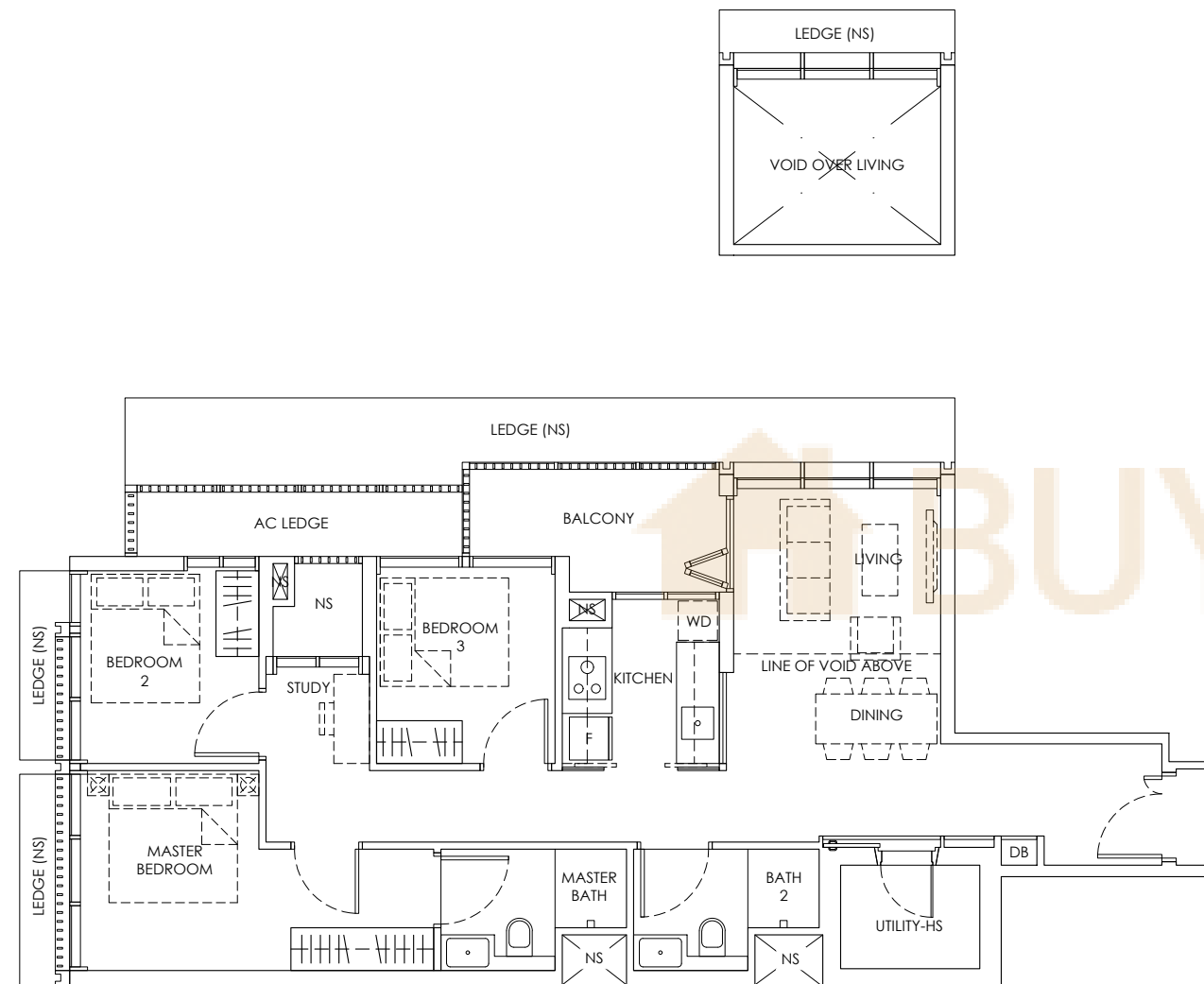
#02 - 01, #04 - 01, #06 - 01  
#08 - 01, #10 - 01

# TYPE B1A

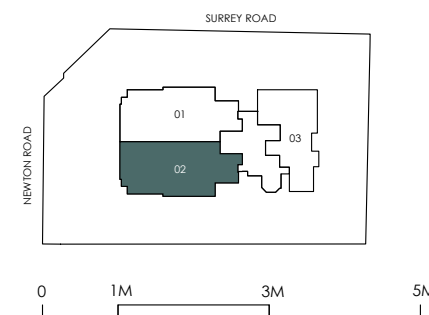
3 Bedroom

Area: 98 sq m / 1055 sq ft  
(Inclusive of 6 sq m of Balcony, 5 sq m of AC Ledge and 8 sq m of Void)

#02 - 02, #04 - 02, #06 - 02  
#08 - 02, #10 - 02



LEGEND:  
DB : DISTRIBUTION BOARD AC LEDGE : AIR-CONDITIONER LEDGE WD : WASHER DRYER  
F : FRIDGE NS : NON-STRATA AREA  
HS : HOUSEHOLD SHELTER



LEGEND:  
DB : DISTRIBUTION BOARD AC LEDGE : AIR-CONDITIONER LEDGE WD : WASHER DRYER  
F : FRIDGE NS : NON-STRATA AREA  
HS : HOUSEHOLD SHELTER

Area includes A/C ledge, balcony, PES (where applicable). The above plan and illustration are subject to changes as maybe required by the relevant authorities. Areas are estimated only and subject to final survey. The balcony and PES shall not be enclosed unless with the approved screen. For an illustration of the approved balcony screen, please refer to the diagram annexed hereto as "Annexure 1".

Area includes A/C ledge, balcony, PES (where applicable). The above plan and illustration are subject to changes as maybe required by the relevant authorities. Areas are estimated only and subject to final survey. The balcony and PES shall not be enclosed unless with the approved screen. For an illustration of the approved balcony screen, please refer to the diagram annexed hereto as "Annexure 1".

# TYPE B2

3 Bedroom

Area: 95 sq m / 1023 sq ft  
(Inclusive of 6 sq m of Balcony, 5 sq m of AC Ledge and 6 sq m of Void)

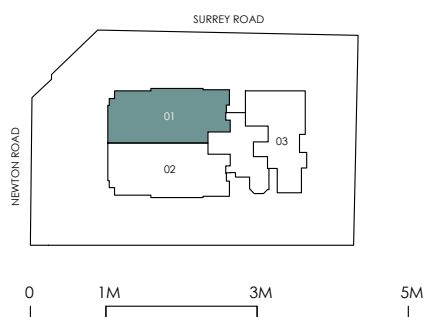
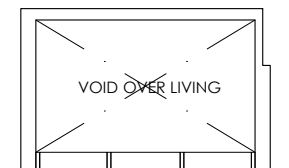
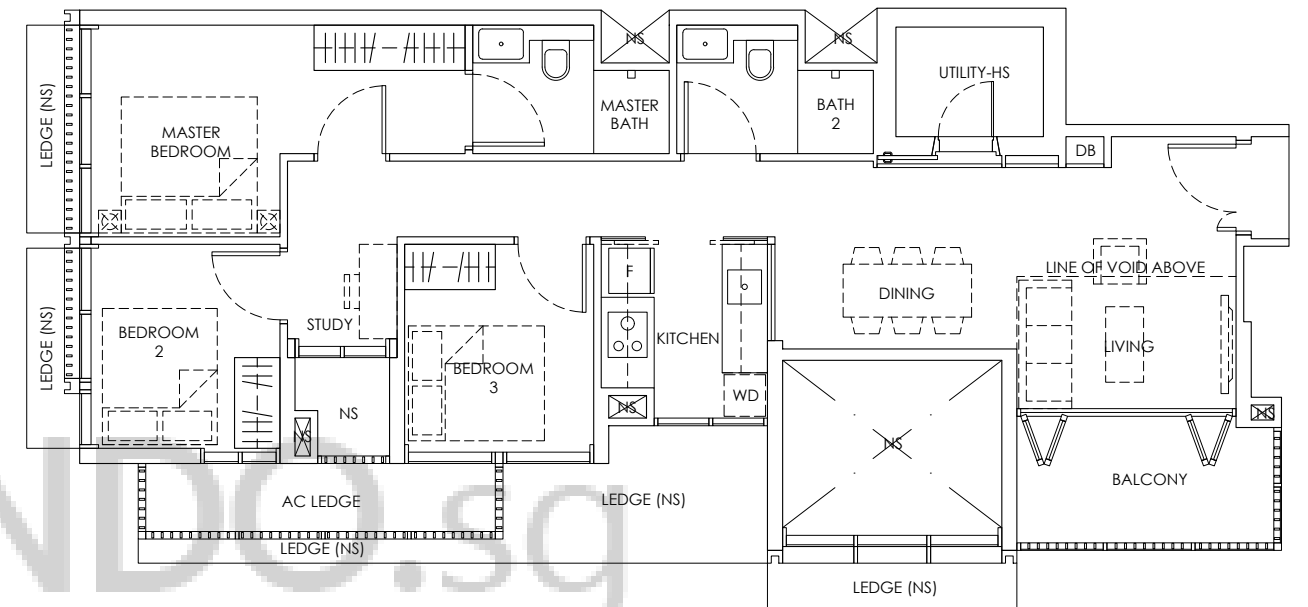
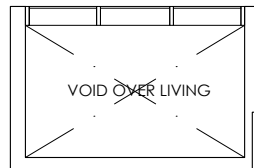
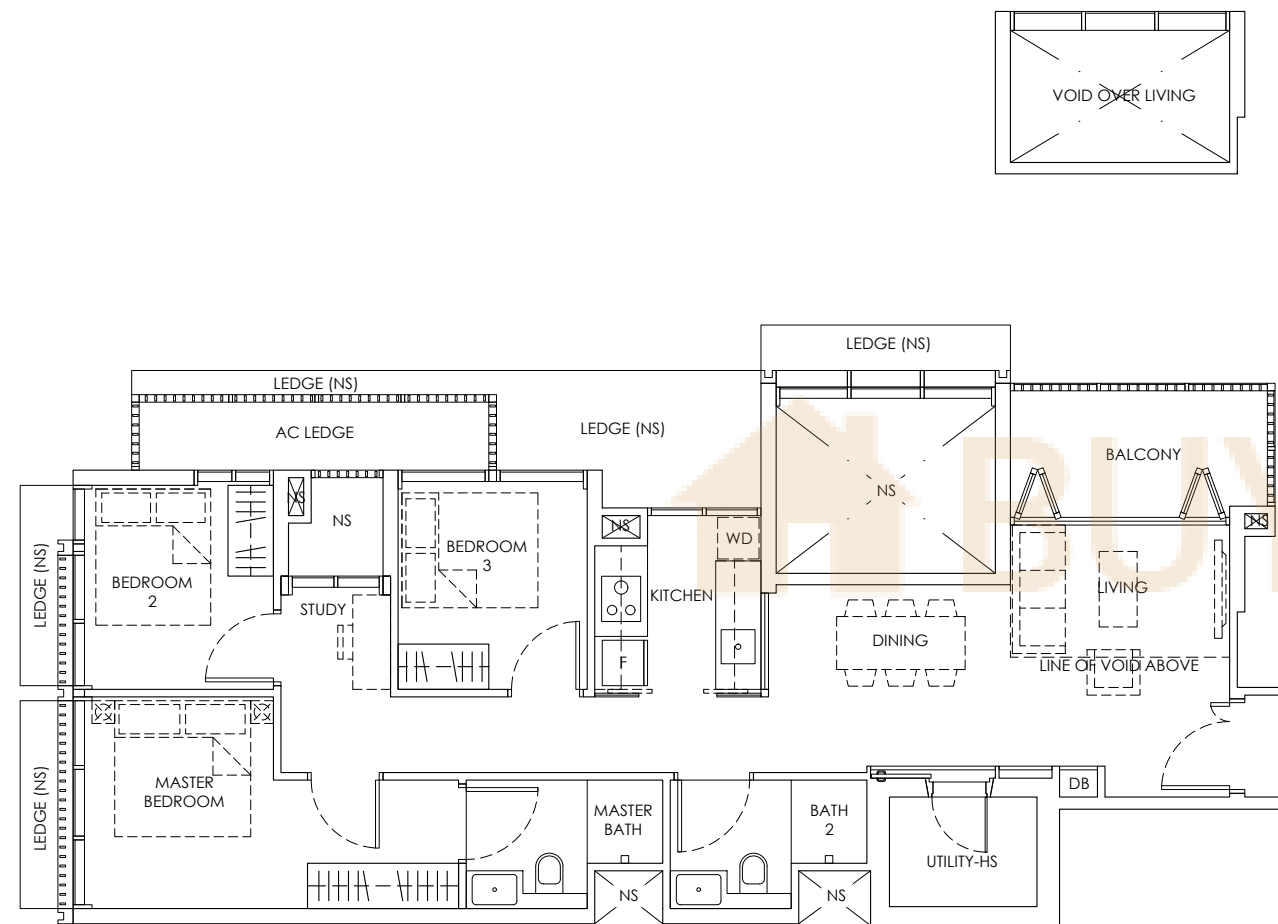
#03 - 01, #05 - 01  
#07 - 01, #09 - 01

# TYPE B2A

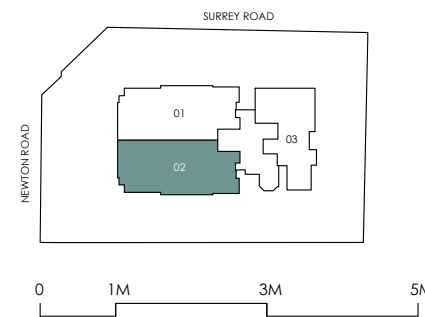
3 Bedroom

Area: 95 sq m / 1023 sq ft  
(Inclusive of 6 sq m of Balcony, 5 sq m of AC Ledge and 6 sq m of Void)

#03 - 02, #05 - 02  
#07 - 02, #09 - 02



LEGEND:  
DB : DISTRIBUTION BOARD AC LEDGE : AIR-CONDITIONER LEDGE WD : WASHER DRYER  
F : FRIDGE NS : NON-STRATA AREA  
HS : HOUSEHOLD SHELTER



LEGEND:  
DB : DISTRIBUTION BOARD AC LEDGE : AIR-CONDITIONER LEDGE WD : WASHER DRYER  
F : FRIDGE NS : NON-STRATA AREA  
HS : HOUSEHOLD SHELTER

Area includes A/C ledge, balcony, PES (where applicable). The above plan and illustration are subject to changes as maybe required by the relevant authorities. Areas are estimated only and subject to final survey. The balcony and PES shall not be enclosed unless with the approved screen. For an illustration of the approved balcony screen, please refer to the diagram annexed hereto as "Annexure 1".

Area includes A/C ledge, balcony, PES (where applicable). The above plan and illustration are subject to changes as maybe required by the relevant authorities. Areas are estimated only and subject to final survey. The balcony and PES shall not be enclosed unless with the approved screen. For an illustration of the approved balcony screen, please refer to the diagram annexed hereto as "Annexure 1".

# TYPE B3

4 Bedroom

Area: 116 sq m / 1249 sq ft

(Inclusive of 5 sq m of Balcony, 5 sq m of Roof Terrace, 5 sq m of AC Ledge and 19 sq m of Void)

#15 - 02

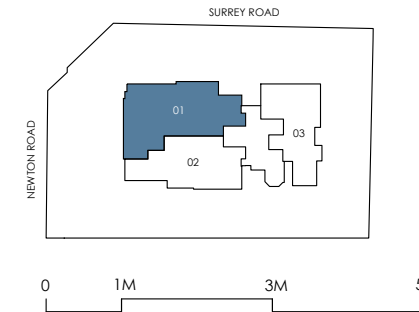
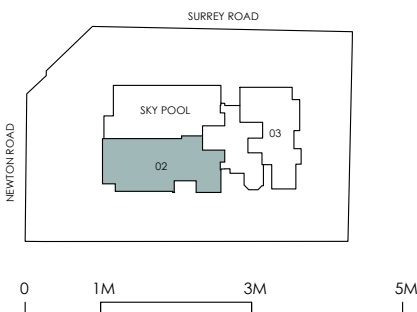
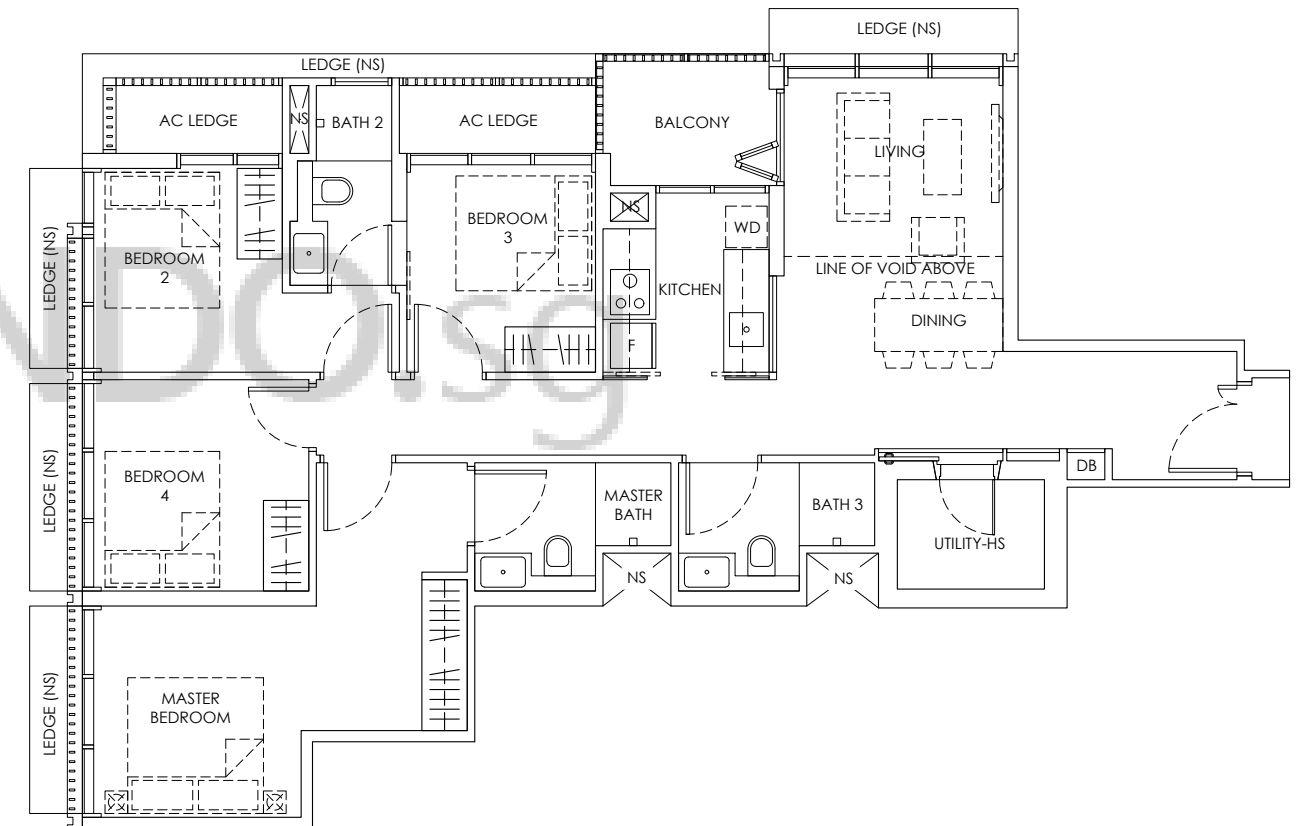
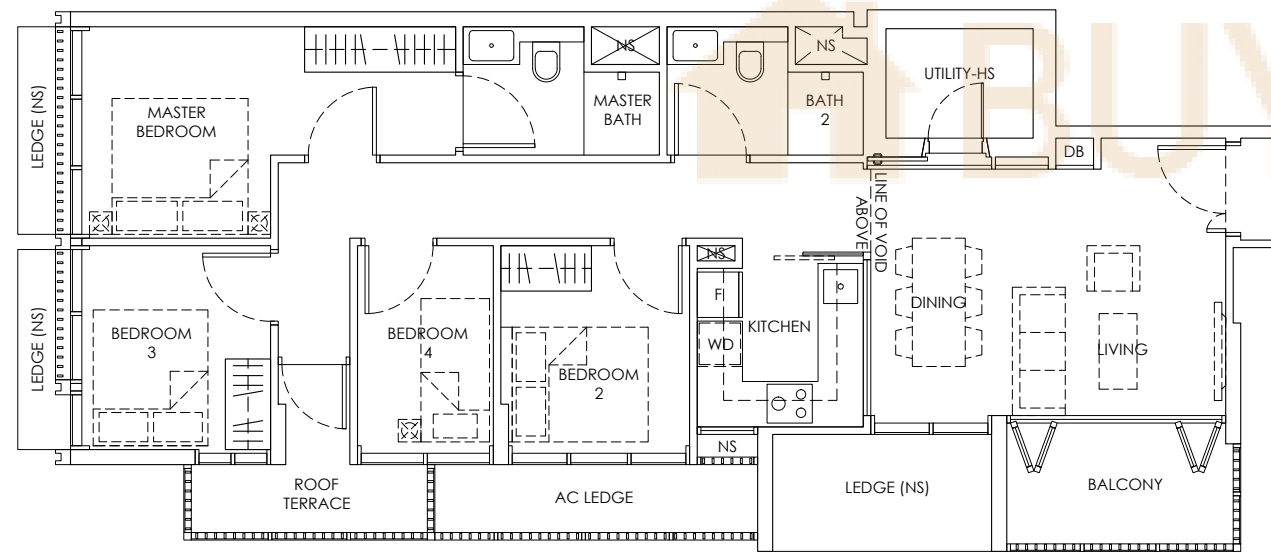
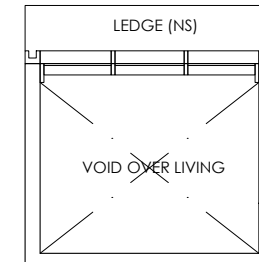
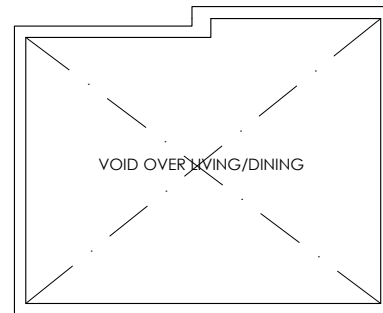
# TYPE C1

4 Bedroom

Area: 113 sq m / 1216 sq ft

(Inclusive of 4 sq m of Balcony, 5 sq m of AC Ledge and 8 sq m of Void)

#12 - 01



LEGEND:  
 DB : DISTRIBUTION BOARD    AC LEDGE : AIR-CONDITIONER LEDGE    WD : WASHER DRYER  
 F : FRIDGE    NS : NON-STRATA AREA  
 HS : HOUSEHOLD SHELTER    [X] : NON-STRATA AREA (VOID)



LEGEND:  
 DB : DISTRIBUTION BOARD    AC LEDGE : AIR-CONDITIONER LEDGE    WD : WASHER DRYER  
 F : FRIDGE    NS : NON-STRATA AREA  
 HS : HOUSEHOLD SHELTER    [X] : NON-STRATA AREA (VOID)

Area includes A/C ledge, balcony, PES (where applicable). The above plan and illustration are subject to changes as maybe required by the relevant authorities. Areas are estimated only and subject to final survey. The balcony and PES shall not be enclosed unless with the approved screen. For an illustration of the approved balcony screen, please refer to the diagram annexed hereto as "Annexure 1".

Area includes A/C ledge, balcony, PES (where applicable). The above plan and illustration are subject to changes as maybe required by the relevant authorities. Areas are estimated only and subject to final survey. The balcony and PES shall not be enclosed unless with the approved screen. For an illustration of the approved balcony screen, please refer to the diagram annexed hereto as "Annexure 1".

# TYPE C1A

4 Bedroom

Area: 105 sq m / 1130 sq ft  
(Inclusive of 4 sq m of Balcony and 5 sq m of AC Ledge)

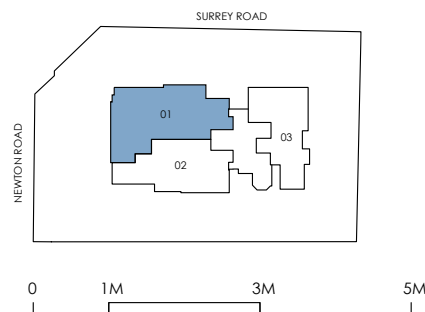
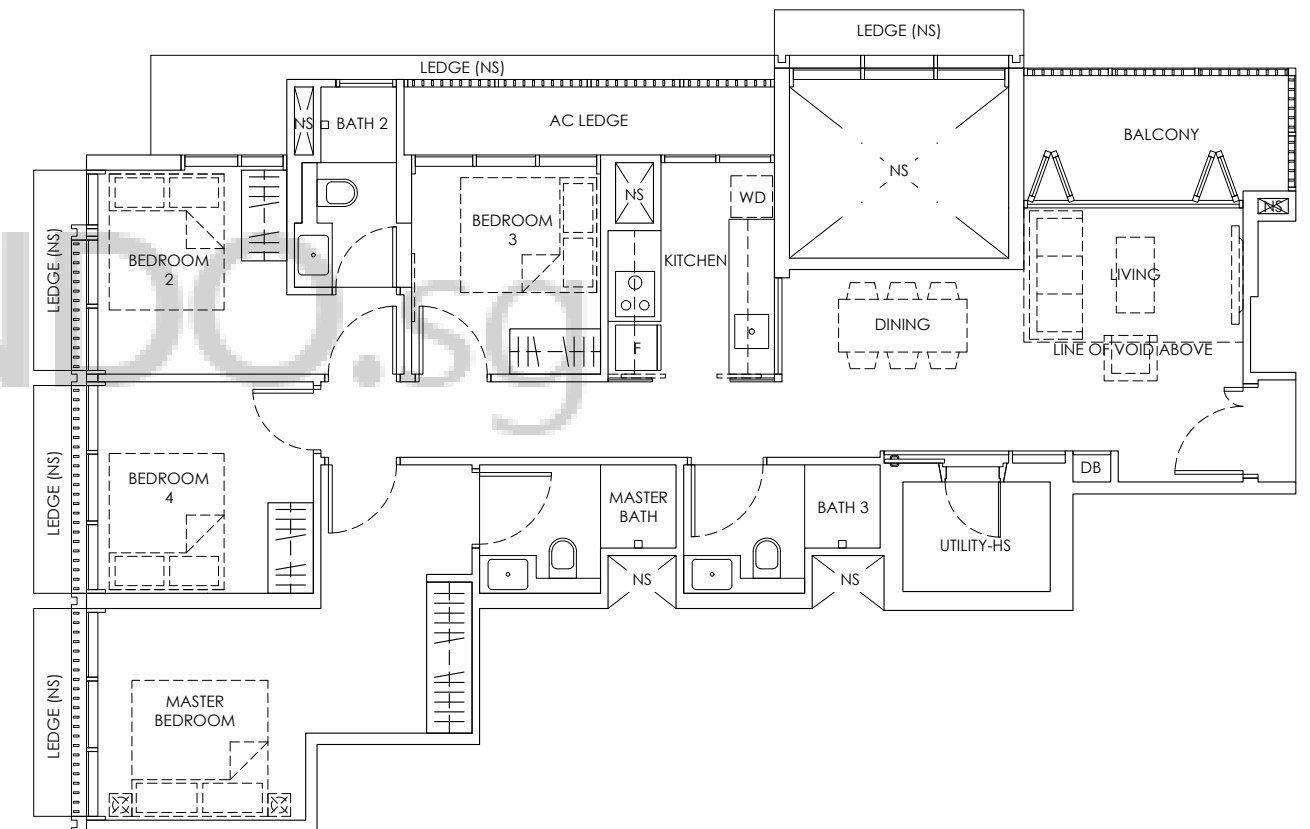
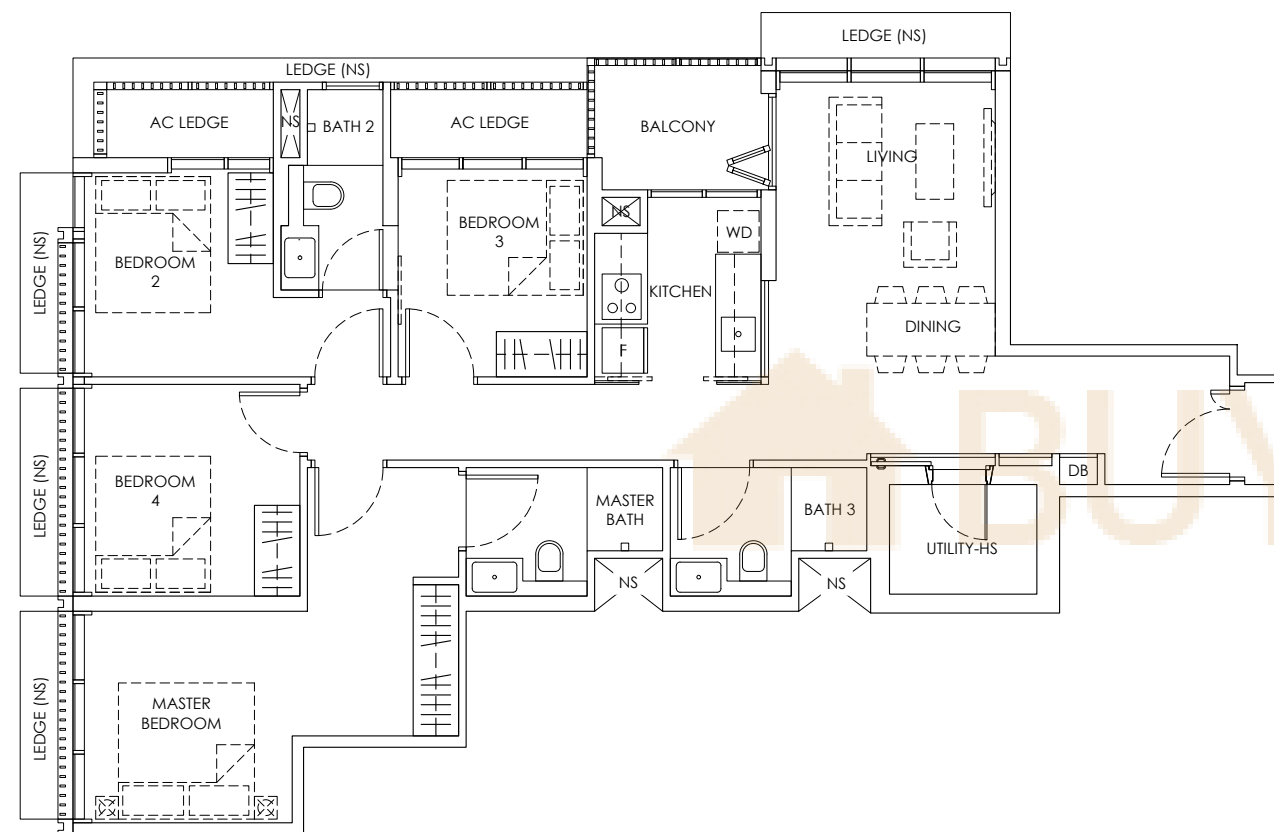
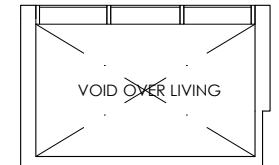
#14 - 01

# TYPE C2

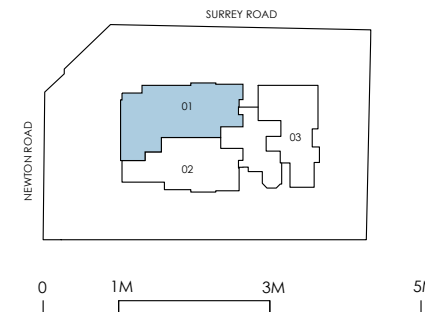
4 Bedroom

Area: 112 sq m / 1206 sq ft  
(Inclusive of 7 sq m of Balcony, 5 sq m of AC Ledge and 6 sq m of Void)

#11 - 01, #13 - 01



LEGEND:  
DB : DISTRIBUTION BOARD AC LEDGE : AIR-CONDITIONER LEDGE WD : WASHER DRYER  
F : FRIDGE NS : NON-STRATA AREA  
HS : HOUSEHOLD SHELTER



LEGEND:  
DB : DISTRIBUTION BOARD AC LEDGE : AIR-CONDITIONER LEDGE WD : WASHER DRYER  
F : FRIDGE NS : NON-STRATA AREA  
HS : HOUSEHOLD SHELTER

Area includes A/C ledge, balcony, PES (where applicable). The above plan and illustration are subject to changes as maybe required by the relevant authorities. Areas are estimated only and subject to final survey. The balcony and PES shall not be enclosed unless with the approved screen. For an illustration of the approved balcony screen, please refer to the diagram annexed hereto as "Annexure 1".

Area includes A/C ledge, balcony, PES (where applicable). The above plan and illustration are subject to changes as maybe required by the relevant authorities. Areas are estimated only and subject to final survey. The balcony and PES shall not be enclosed unless with the approved screen. For an illustration of the approved balcony screen, please refer to the diagram annexed hereto as "Annexure 1".