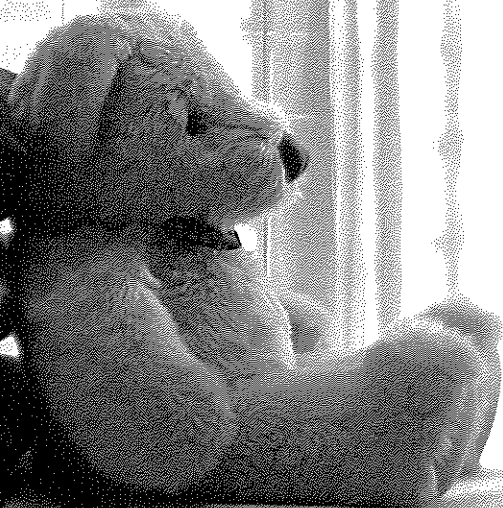


169

*the*

line

*Life as it should be.*





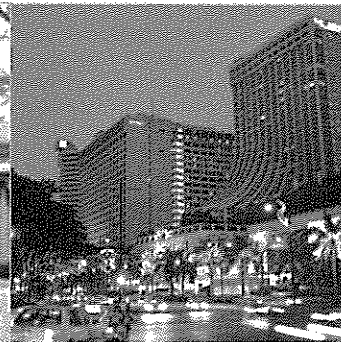
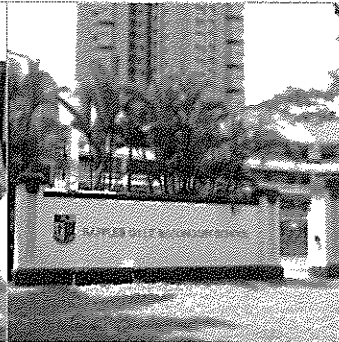
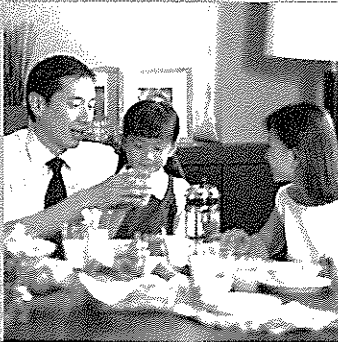
*"It's wonderful. We finally found the perfect place. Cool modern architecture with a friendly family feel.*

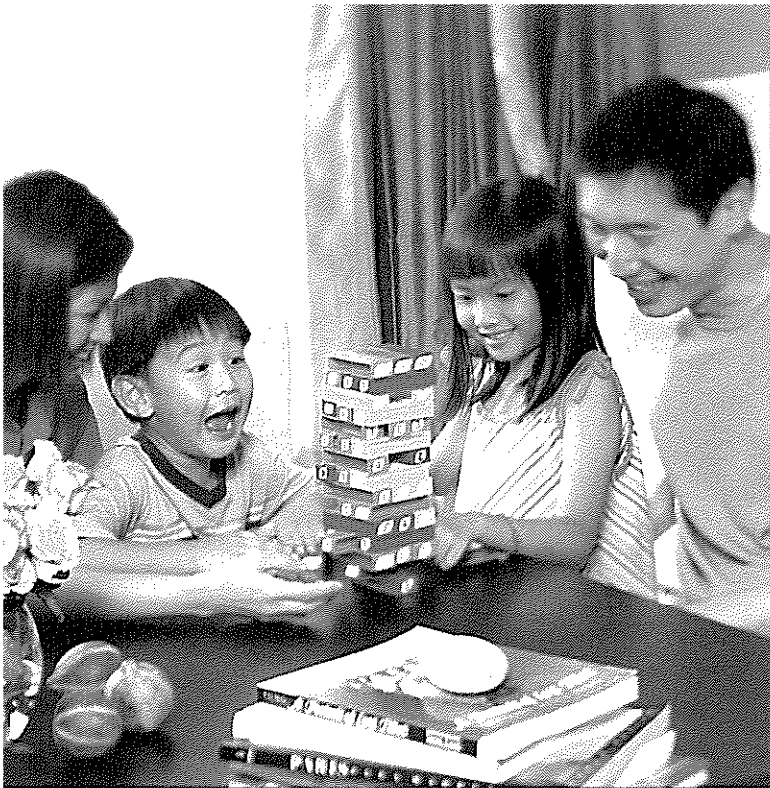
*And everything's so close, we don't have to rush around anymore.*

*We love it. And so do the kids."*

Artist's Impression

Minutes away from the CBD, premier schools and clubs (including country clubs).



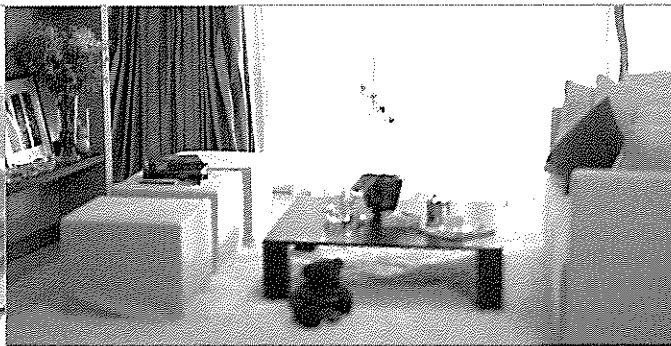
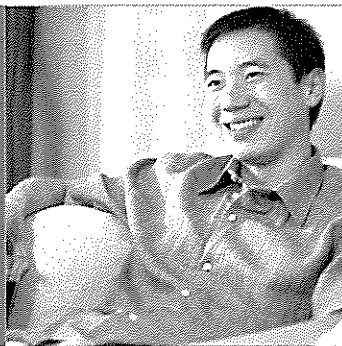


*"This is the contemporary home we've been  
longing for. Now we have it.*

*I can spend more quality time at home.*

*Playing with my kids or just watching  
my game in comfort. This is precisely why  
we moved here in the first place."*

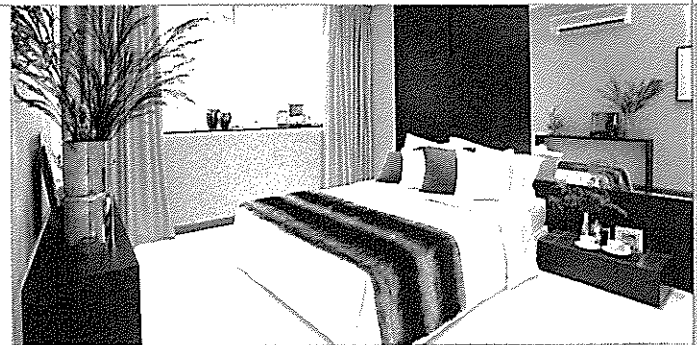
Contemporary styling.  
Spaces designed for comfort.  
Simple, uncluttered lines.  
Bright, airy living rooms fronted  
by floor-to-ceiling windows.



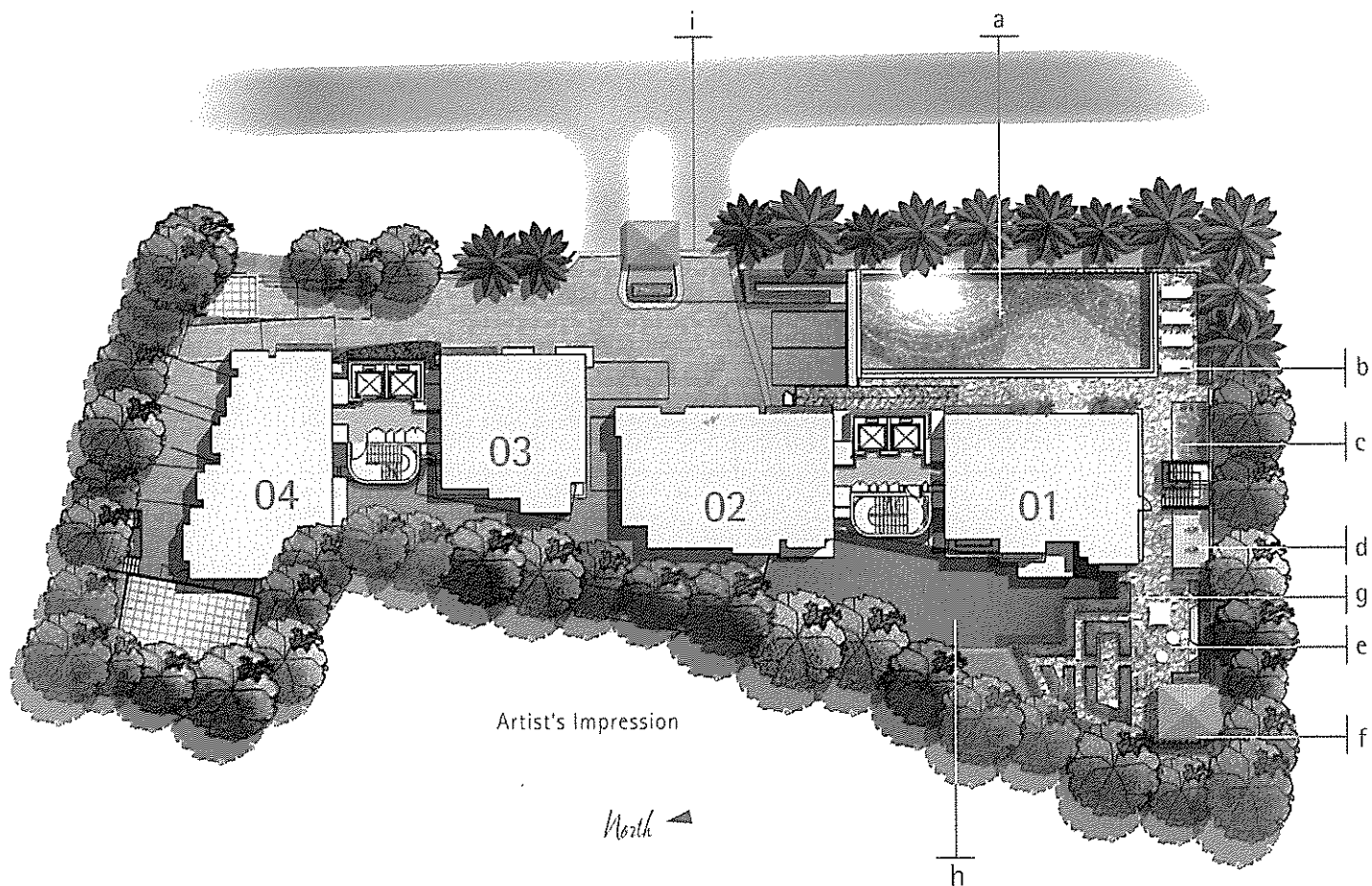


*"I believe that everyone in the family should have their own space. Lucky for us, we have all the space and privacy we need right here. Life doesn't get better than this."*

51 exclusive apartments. Impeccable finishes. Quality uncompromised in a choice of 1, 2 or 3 bedroom apartments and duplex units. All reached by a private lift that serves only two units per floor.







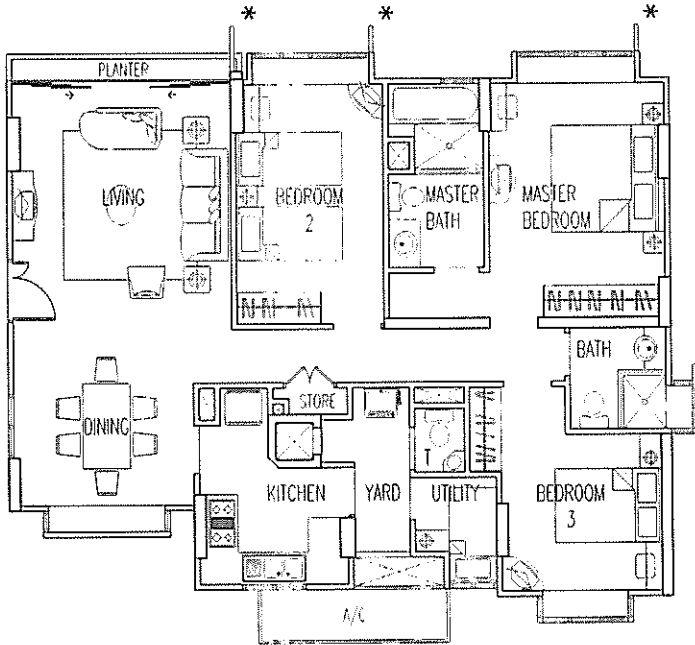
- a main pool
- b pool deck
- c children's pool
- d play area
- e bbq area
- f pavilion
- g gymnasium
- h basement carpark
- i auto-gate

*"It never occurred to me that a pool is more than a place to exercise. Not until I had kids of my own. These days, the pool has become our favourite hangout. Taking a dip and catching up with the neighbours!"*



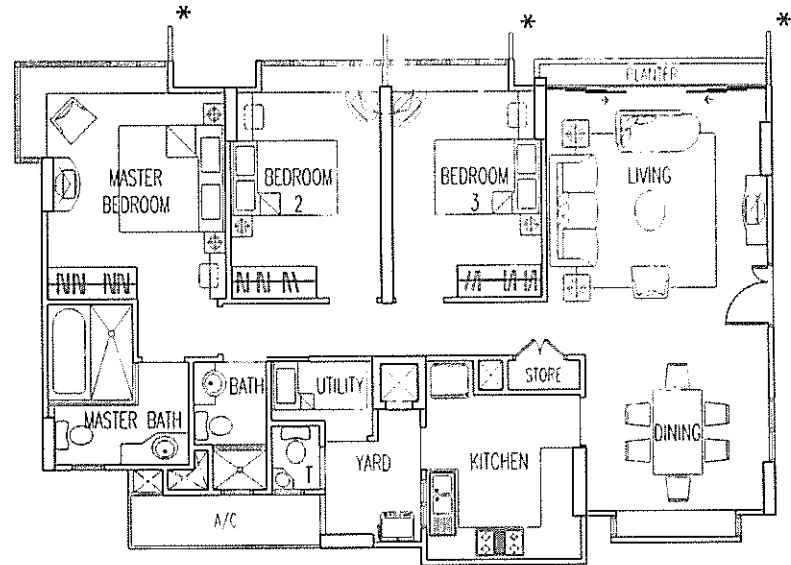
*type*  
**C1a**

(10th – 17th Storey)  
Approximate Area : 120 sq m / 1292 sq ft



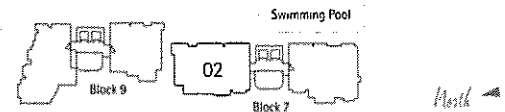
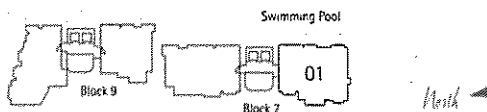
*type*  
**C2a**

(10th – 17th Storey)  
Approximate Area : 119 sq m / 1281 sq ft



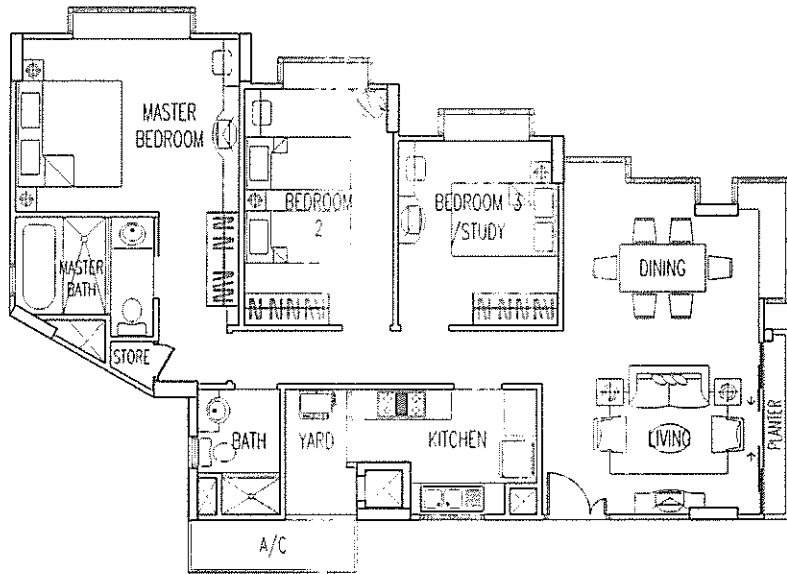
\*Security screening requirement is subject to inspection by the relevant authorities.

\*Security screening requirement is subject to inspection by the relevant authorities.



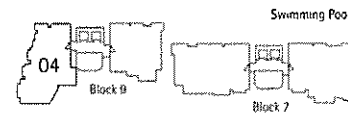
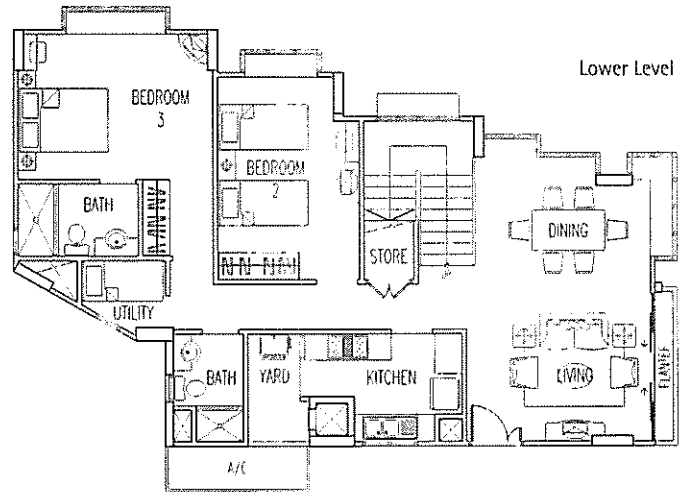
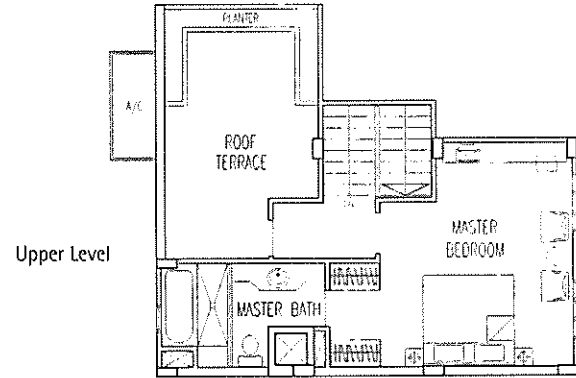
# type C3

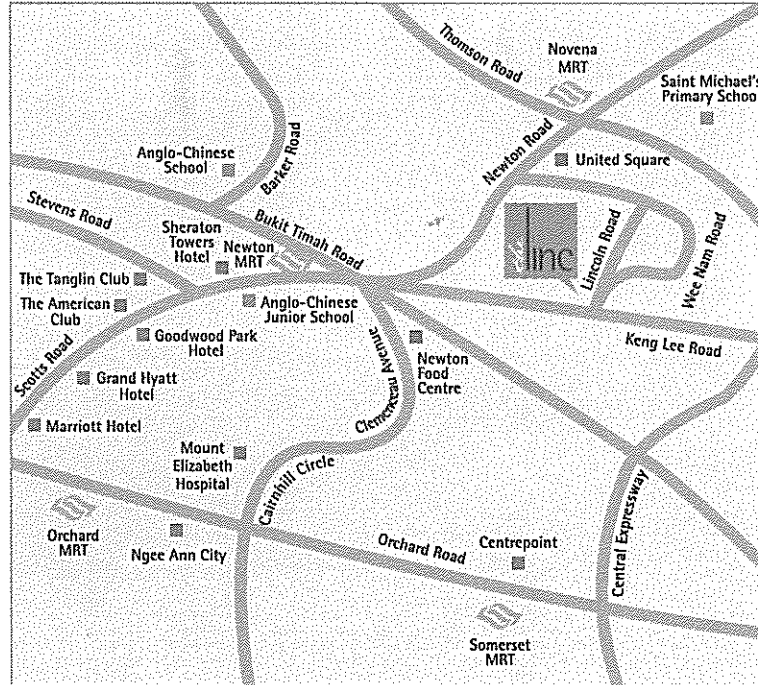
(2nd – 8th Storey)  
Approximate Area : 106 sq m / 1141 sq ft



# type P4

(9th Storey / Attic)  
Approximate Area : 165 sq m / 1776 sq ft  
includes 15 sq m roof terrace





## Keppel Homes

SHOWFLAT : 6251 7677  
 OFFICE : 6336 3688  
[www.thelinc.com.sg](http://www.thelinc.com.sg)

Developer: Keppel Land Realty Pte Ltd • Tenure: Freehold • Developer's Licence: B1469 (Amendment 3) • Expected TOP Date: 31 December 2006 • Expected Legal Completion Date: 31 December 2009 •  
 Location: Lots 1074T, 1119X, 21, 22, 351 & 352 T5 28 at Lincoln Road  
 Building Plan Approval: A0781-008-1999-BP01 (22/9/2000), A0781-008-1999-BP02 (22/8/2002), A0781-008-1999-BP03 (29/11/2002)

Whilst every reasonable care has been taken in preparing the brochure, constructing the model and the sales gallery/showflat (the "Materials"), the developer and its agents shall not be held responsible for any inaccuracies in the Materials and its contents or between the Materials and the actual unit. All statements, literature and depictions in the Materials are not to be regarded as a statements or representations of fact. Visual representations, such as layout plans, finishes, illustrations, pictures, photographs and drawings contained in the Materials are artists' impression only and not representations of fact. Such materials are for general guidance only and should not be relied upon as accurately describing any specific matter or fact. All information, specifications, plans and visual representations contained in the Materials are subject to changes from time to time by the developer and/or the competent authorities and shall not form part of the offer or contract. The Sale and Purchase Agreement shall form the entire agreement between the developer and the purchaser and shall in no way be modified by any statements, representations or promises made (whether or not contained in the Materials and/or made by the developer or the agent) made. No part of the Materials shall constitute a representation or warranty by the developer and/or its agents. The floor plans are approximate measurements only and are subject to final survey.