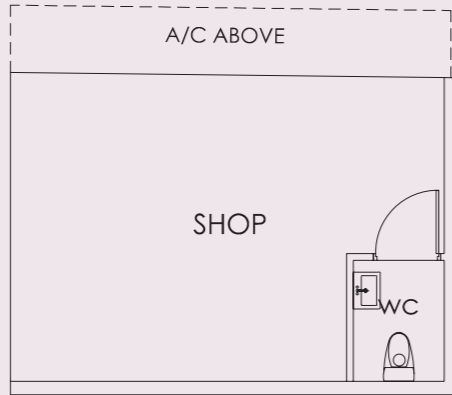


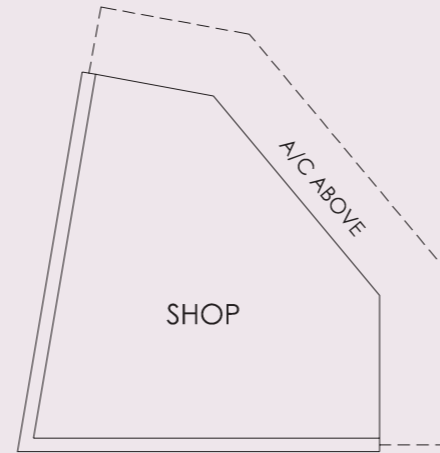
SHOP 1

#01-01
37 sq m



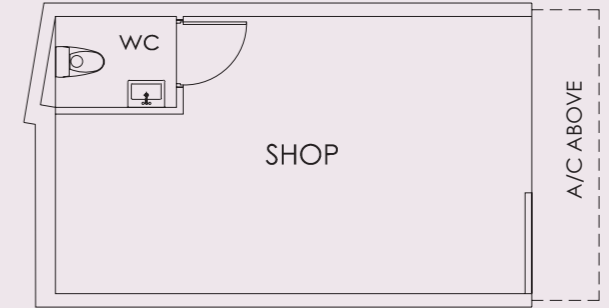
SHOP 3

#01-03
30 sq m



SHOP 4

#01-04
36 sq m



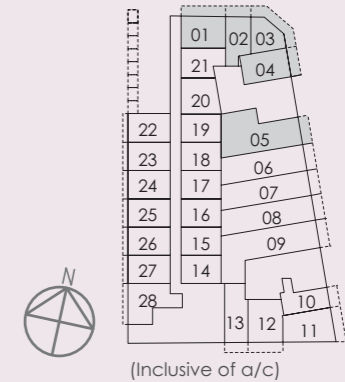
SHOP 2

#01-02
30 sq m



SHOP 5

#01-05
68 sq m



SHOP 6

#01-06
51 sq m



SHOP 8

#01-08
56 sq m



SHOP 7

#01-07
53 sq m



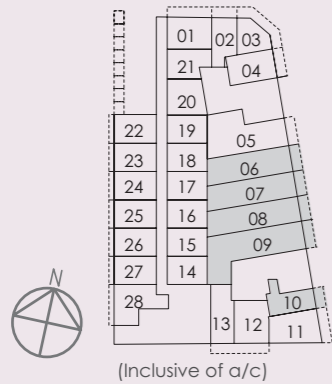
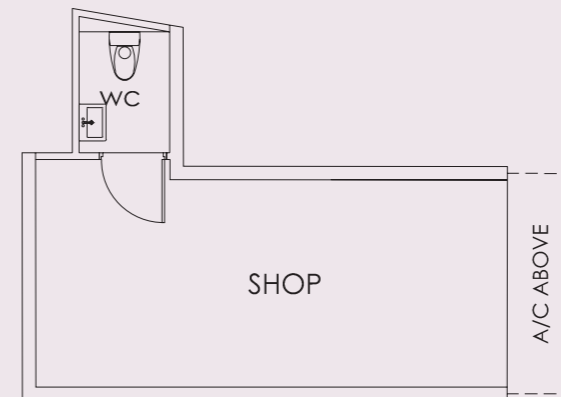
SHOP 9

#01-09
78 sq m



SHOP 10

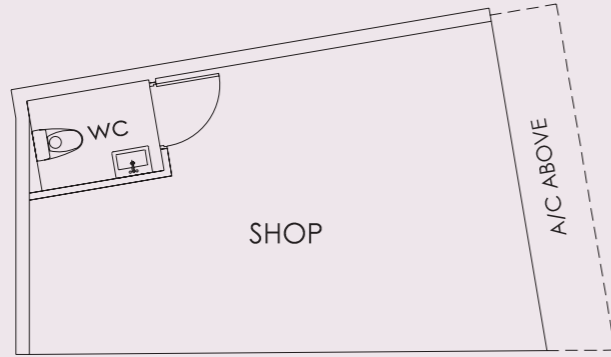
#01-10
30 sq m



SHOP 11

#01-11

38 sq m



SHOP 13

#01-13

37 sq m



SHOP 15

SHOP 17

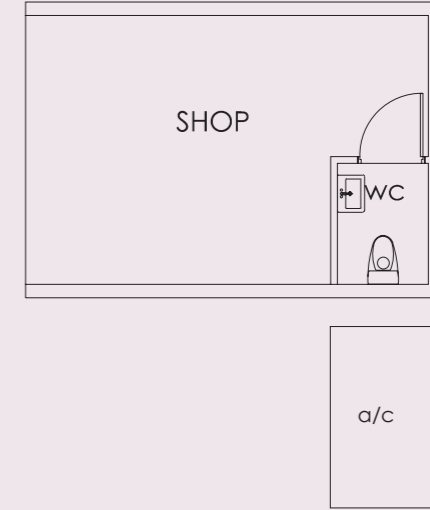
SHOP 19

#01-15

#01-17

#01-19

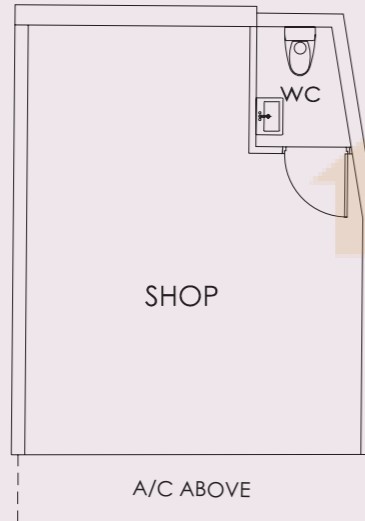
28 sq m



SHOP 12

#01-12

38 sq m



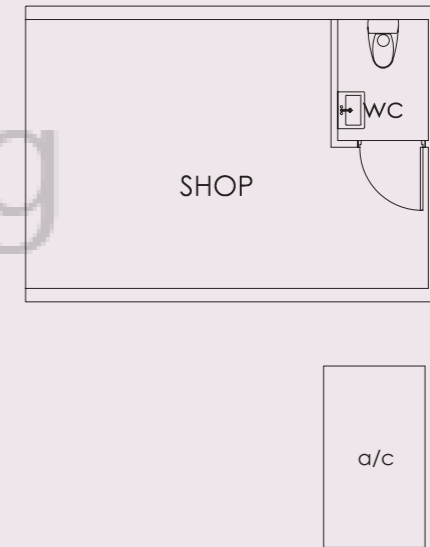
SHOP 16

SHOP 18

#01-16

#01-18

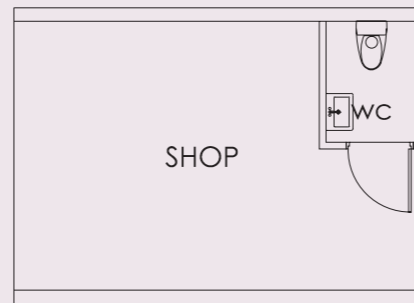
28 sq m



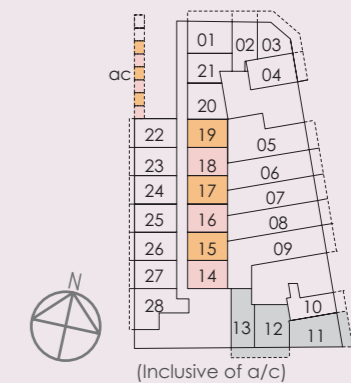
SHOP 14

#01-14

26 sq m

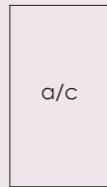
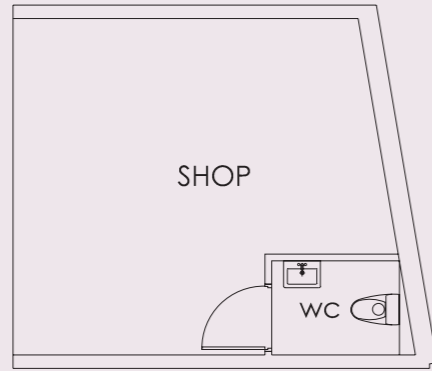


BUYCONDO.sg



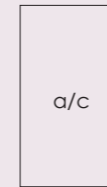
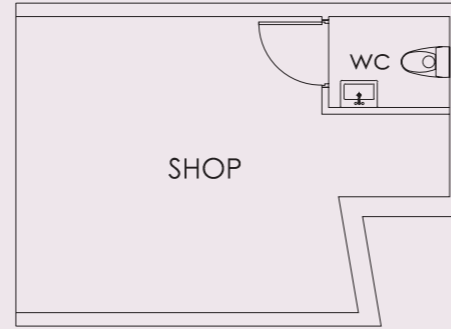
SHOP 20

#01-20
32 sq m



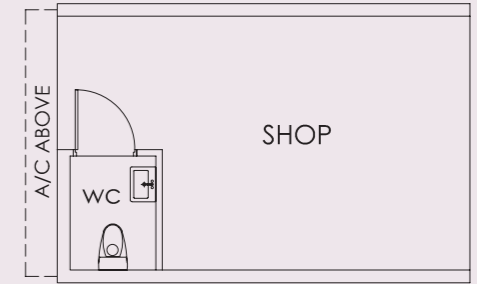
SHOP 21

#01-21
30 sq m



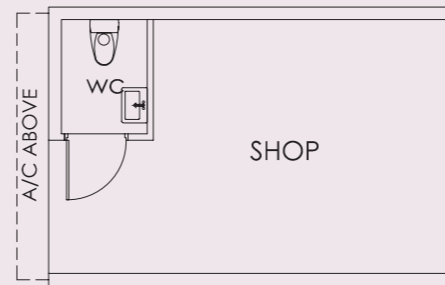
SHOP 23
SHOP 25
SHOP 27

#01-23
#01-25
#01-27
29 sq m



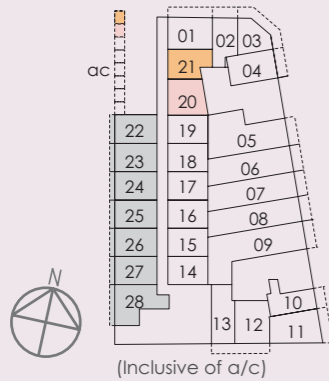
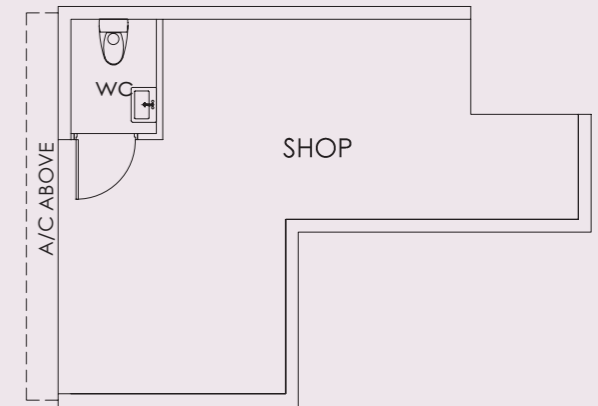
SHOP 22
SHOP 24
SHOP 26

#01-22
#01-24
#01-26
29 sq m



SHOP 28

#01-28
37 sq m



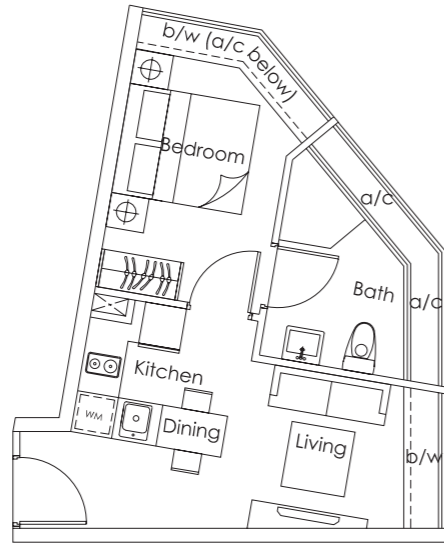


Uncompromised quality and contemporary finishes, reflect a balance of comfort and function.



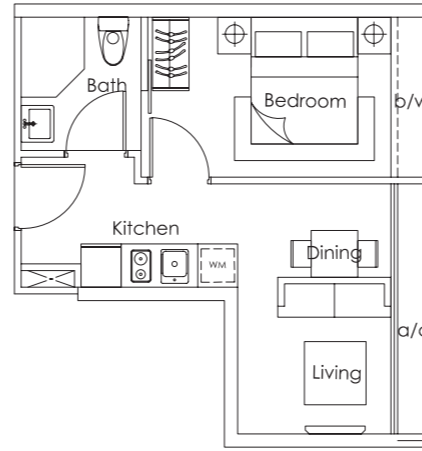
TYPE A

35 sq m
1 bdrm
#02-01



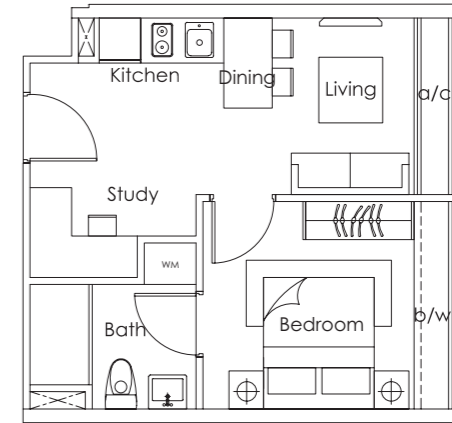
TYPE B

32 sq m
1 bdrm
#02-02



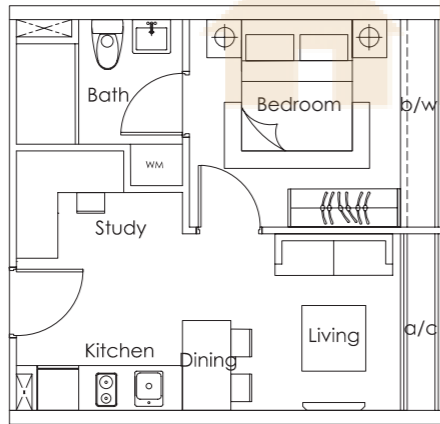
TYPE C

36 sq m
1 bdrm + Study
#02-03



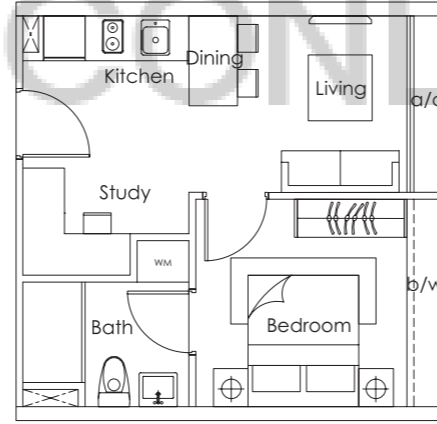
TYPE D

36 sq m
1 bdrm + Study
#02-04
#02-06



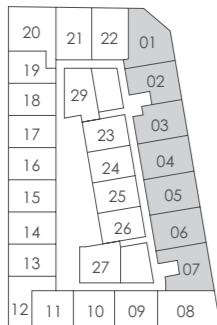
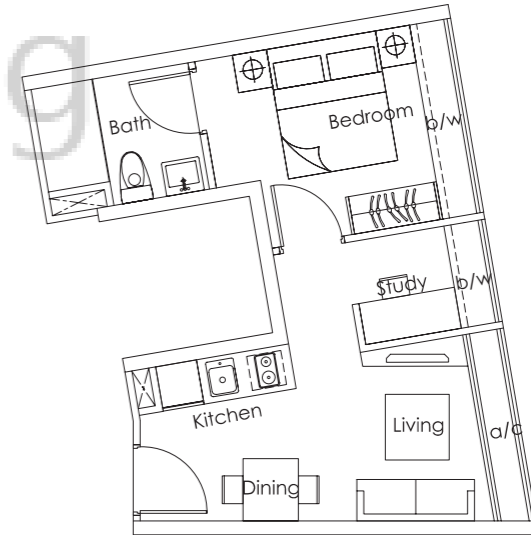
TYPE E

36 sq m
1 bdrm + Study
#02-05



TYPE F

36 sq m
1 bdrm + Study
#02-07

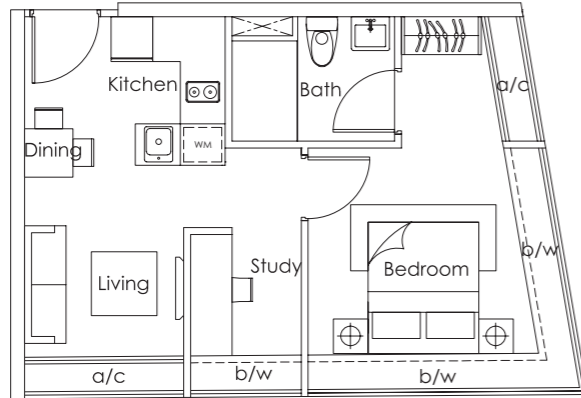


For Level 2

Area includes a/c &/or b/w &/or void &/or roof terrace &/or PES, where applicable. All plans are subject to amendments as approved by the relevant authorities.

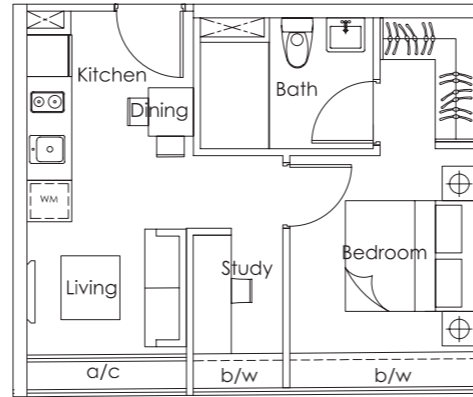
TYPE G

43 sq m
1 bdrm + Study
#02-08



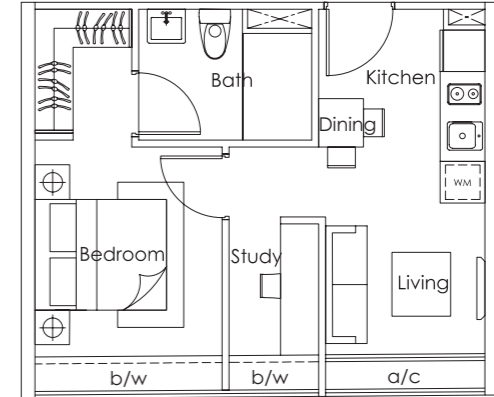
TYPE H

38 sq m
1 bdrm + Study
#02-09



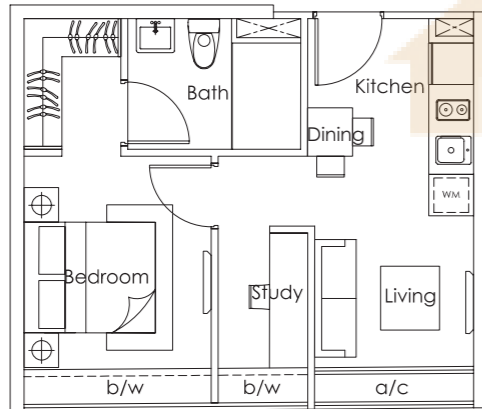
TYPE J

38 sq m
1 bdrm + Study
#02-10



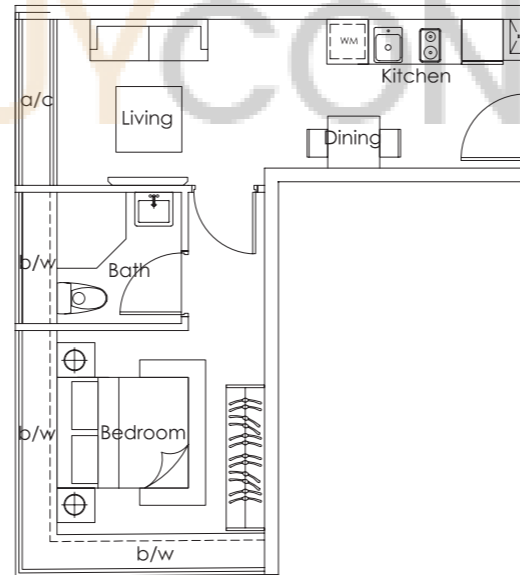
TYPE K

39 sq m
1 bdrm + Study
#02-11



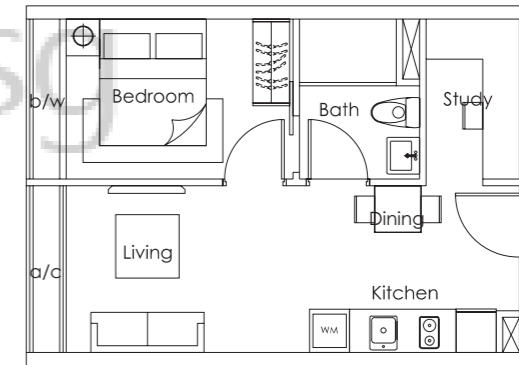
TYPE L

39 sq m
1 bdrm
#02-12

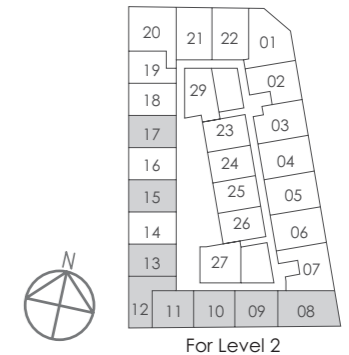


TYPE M

39 sq m
1 bdrm + Study
#02-13
#02-15
#02-17

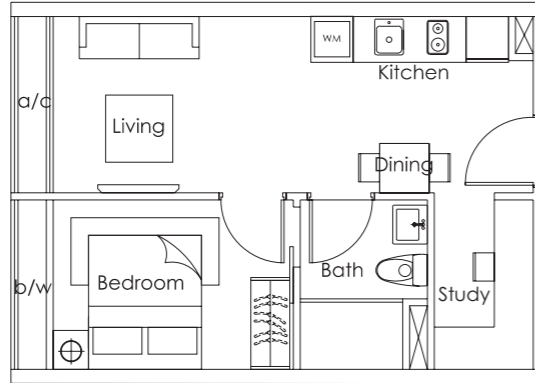


Area includes a/c &/or b/w &/or void &/or roof terrace &/or PES, where applicable. All plans are subject to amendments as approved by the relevant authorities.



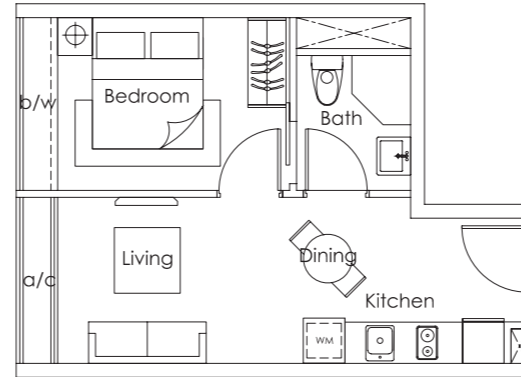
TYPE P

39 sq m
1 bdrm + Study
#02-14
#02-16
#02-18



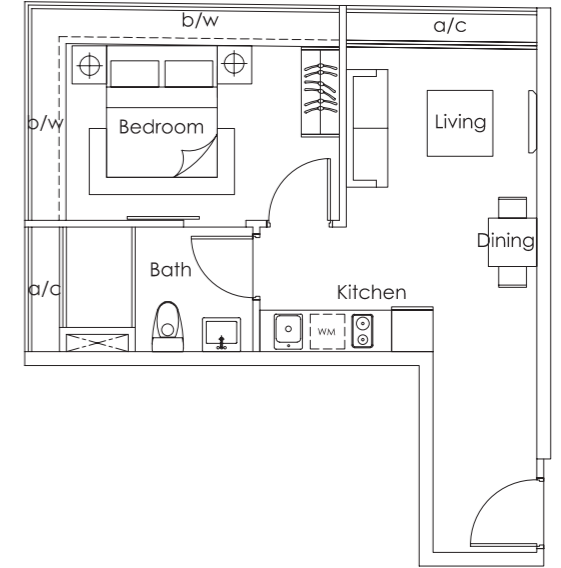
TYPE Q

34 sq m
1 bdrm
#02-19



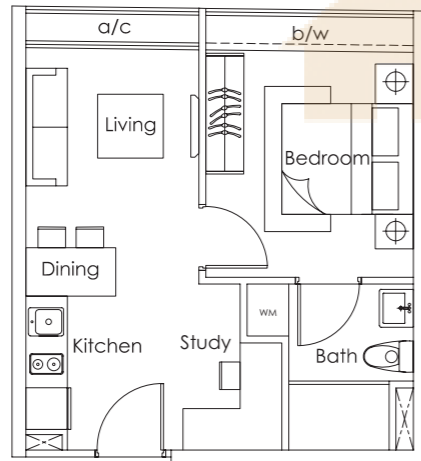
TYPE R

43 sq m
1 bdrm
#02-20



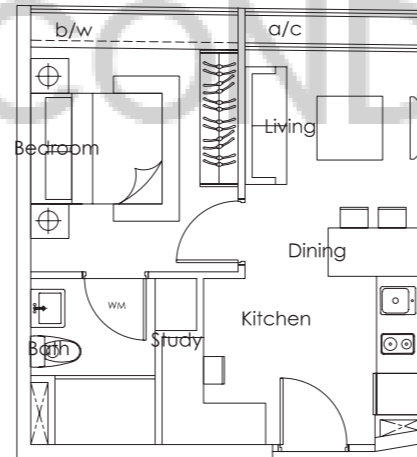
TYPE S

38 sq m
1 bdrm + Study
#02-21



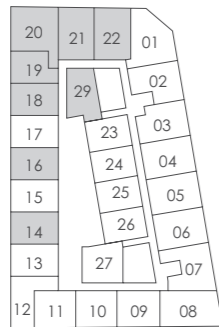
TYPE T

38 sq m
1 bdrm + Study
#02-22



TYPE U

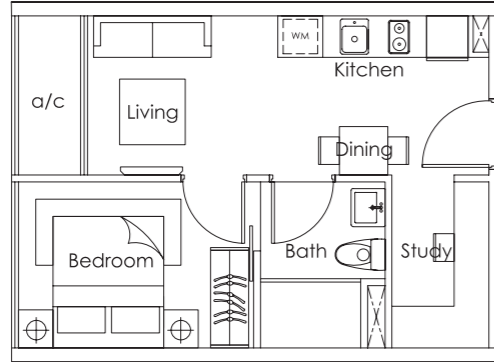
43 sq m
1 bdrm + Study
#02-29



Area includes a/c &/or b/w &/or void &/or roof terrace &/or PES, where applicable. All plans are subject to amendments as approved by the relevant authorities.

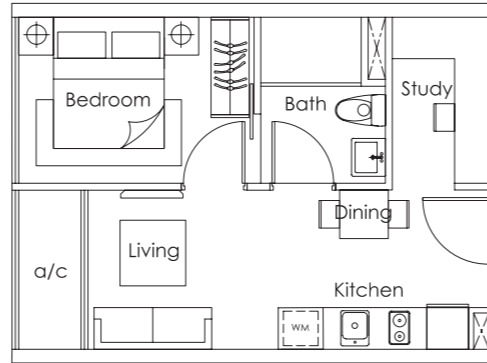
TYPE V

35 sq m
1 bdrm + Study
#02-23
#02-25



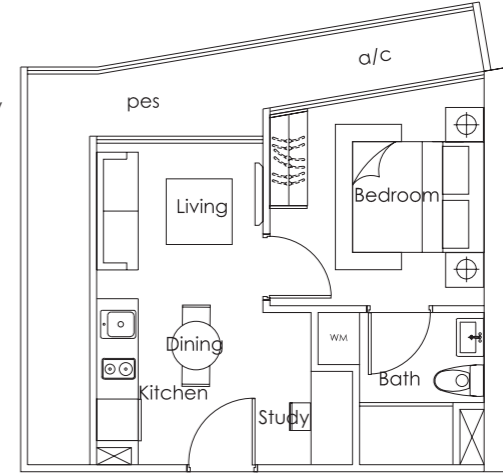
TYPE W

35 sq m
1 bdrm + Study
#02-24
#02-26



TYPE X

42 sq m
1 bdrm + Study
#02-27



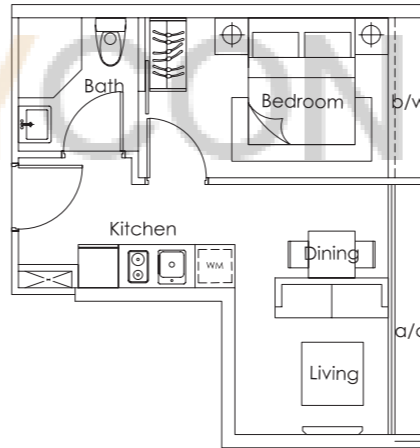
TYPE A1

35 sq m
1 bdrm
#03-01
#04-01



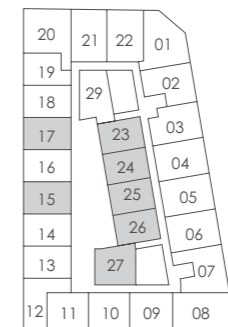
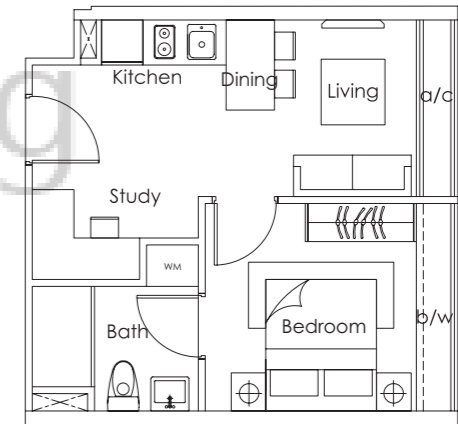
TYPE B1

32 sq m
1 bdrm
#03-02
#04-02

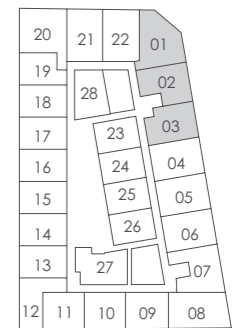


TYPE C1

36 sq m
1 bdrm + Study
#03-03
#04-03



For Level 2



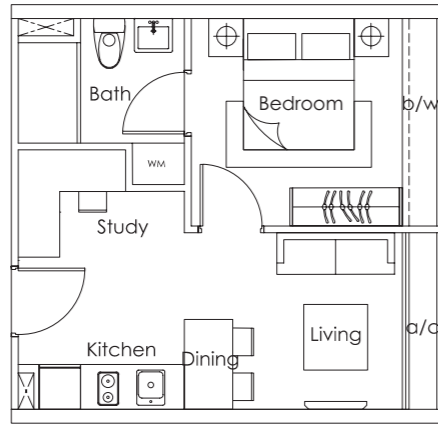
For Level 3 & 4



Area includes a/c &/or b/w &/or void &/or roof terrace &/or PES, where applicable. All plans are subject to amendments as approved by the relevant authorities.

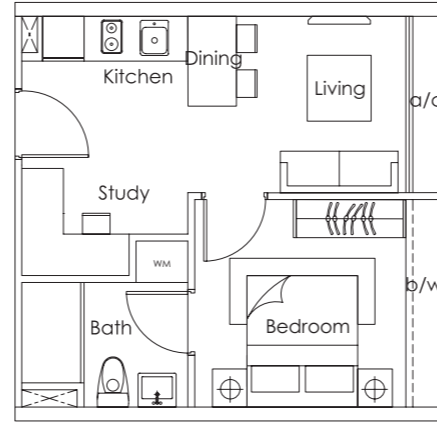
TYPE D1

36 sq m
1 bdrm + Study
#03-04
#04-04
#03-06
#04-06



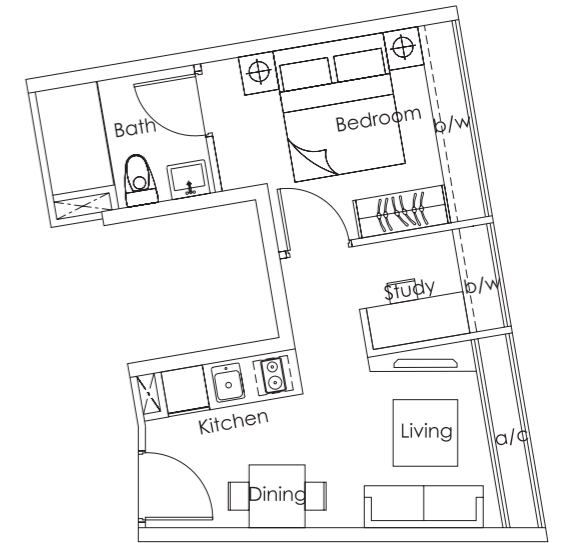
TYPE E1

36 sq m
1 bdrm + Study
#03-05
#04-05



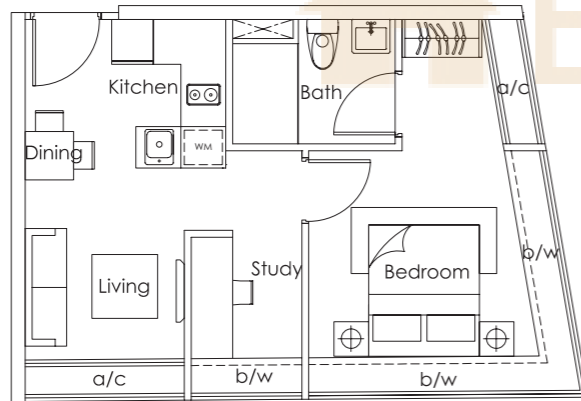
TYPE F1

36 sq m
1 bdrm + Study
#03-07
#04-07



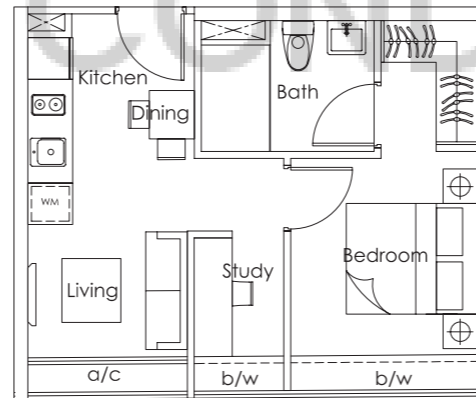
TYPE G1

43 sq m
1 bdrm + Study
#03-08
#04-08



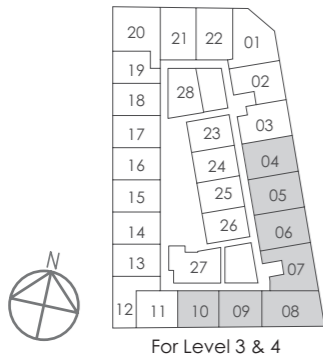
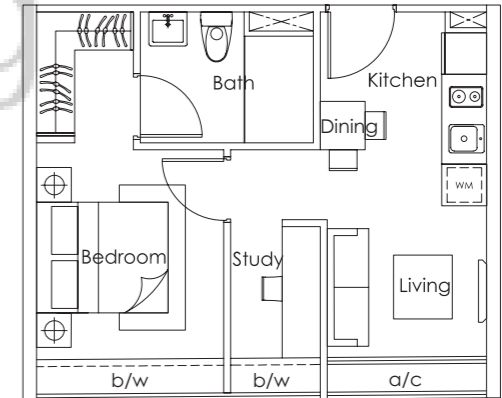
TYPE H1

38 sq m
1 bdrm + Study
#03-09
#04-09



TYPE J1

38 sq m
1 bdrm + Study
#03-10
#04-10

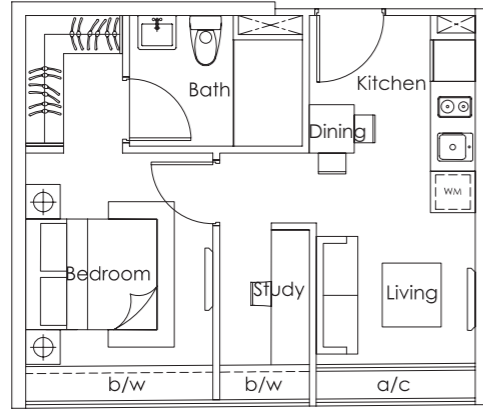


For Level 3 & 4

Area includes a/c &/or b/w &/or void &/or roof terrace &/or PES, where applicable. All plans are subject to amendments as approved by the relevant authorities.

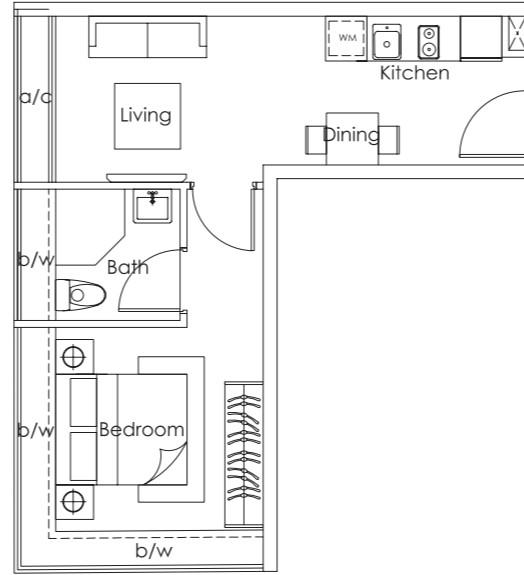
TYPE K1

39 sq m
1 bdrm + Study
#03-11
#04-11



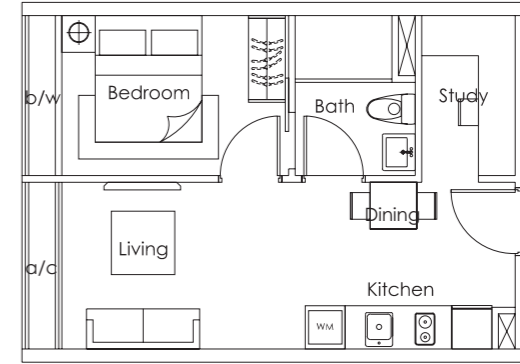
TYPE L1

39 sq m
1 bdrm
#03-12
#04-12



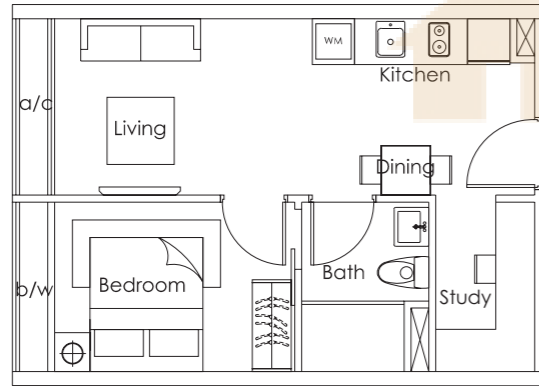
TYPE M1

39 sq m
1 bdrm + Study
#03-13
#04-13
#03-15
#04-15
#03-17
#04-17



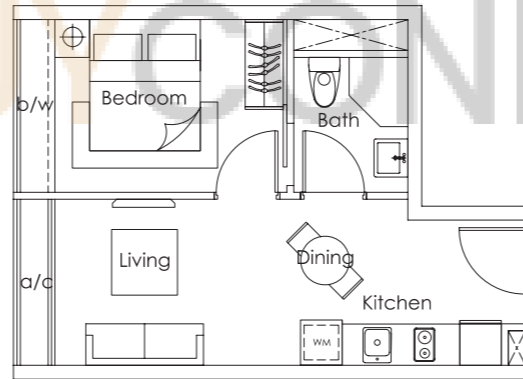
TYPE P1

39 sq m
1 bdrm + Study
#03-14
#04-14
#03-16
#04-16
#03-18
#04-18



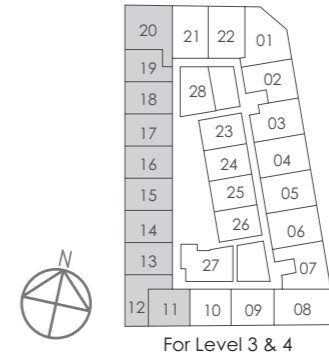
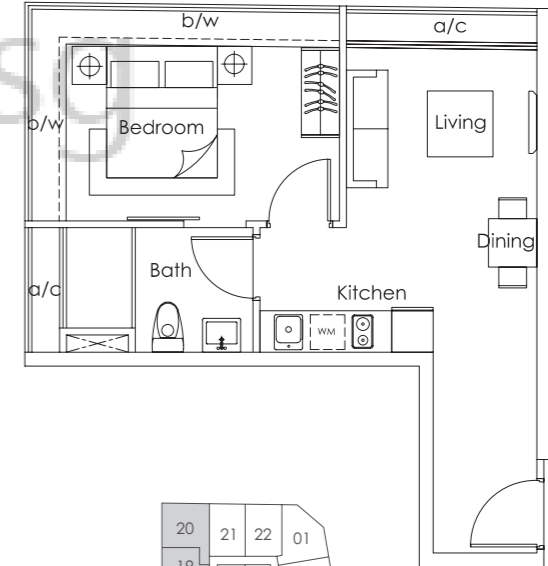
TYPE Q1

34 sq m
1 bdrm
#03-19
#04-19



TYPE R1

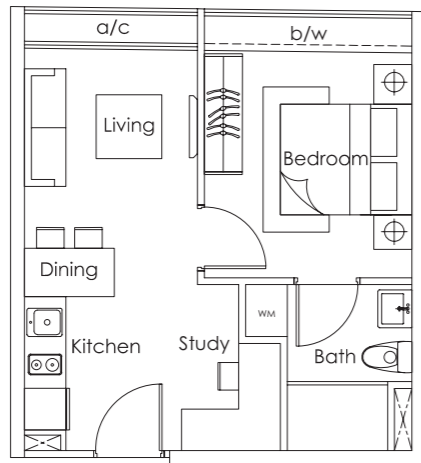
43 sq m
1 bdrm
#03-20
#04-20



Area includes a/c &/or b/w &/or void &/or roof terrace &/or PES, where applicable. All plans are subject to amendments as approved by the relevant authorities.

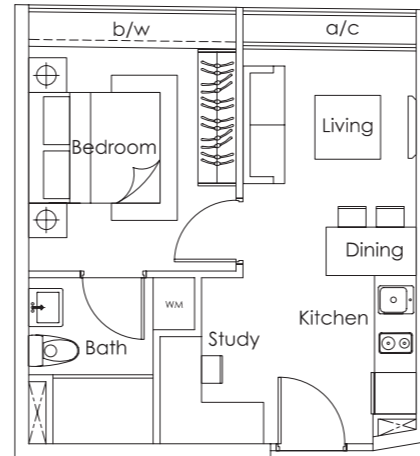
TYPE S1

38 sq m
1 bdrm + Study
#03-21
#04-21



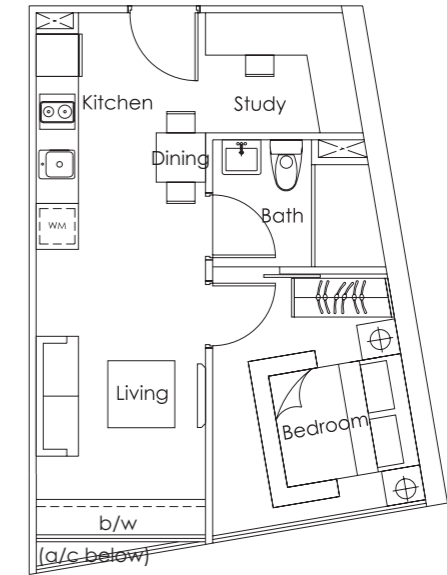
TYPE T1

38 sq m
1 bdrm + Study
#03-22
#04-22



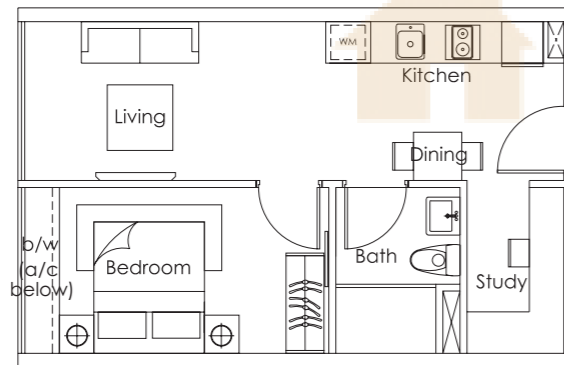
TYPE U1

39 sq m
1 bdrm + Study
#03-28
#04-28



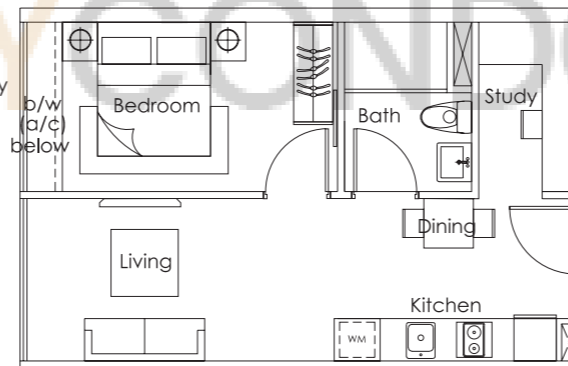
TYPE V1

38 sq m
1 bdrm + Study
#03-23
#04-23
#03-25
#04-25



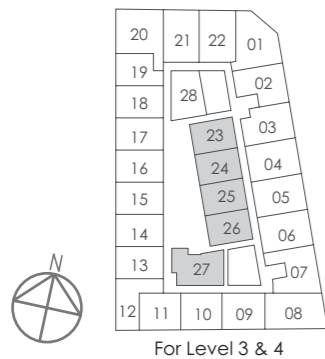
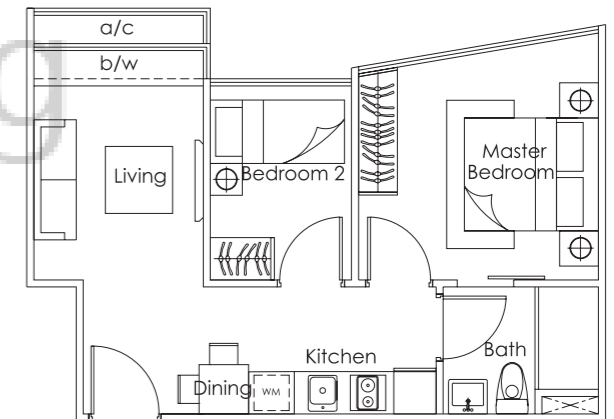
TYPE W1

38 sq m
1 bdrm + Study
#03-24
#04-24
#03-26
#04-26



TYPE X1

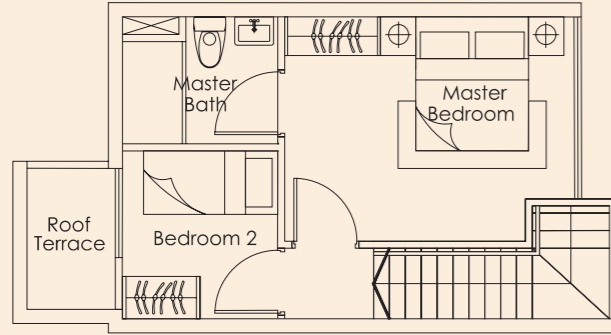
42 sq m
2 bdrm
#03-27
#04-27



Area includes a/c &/or b/w &/or void &/or roof terrace &/or PES, where applicable. All plans are subject to amendments as approved by the relevant authorities.

TYPE PH-4

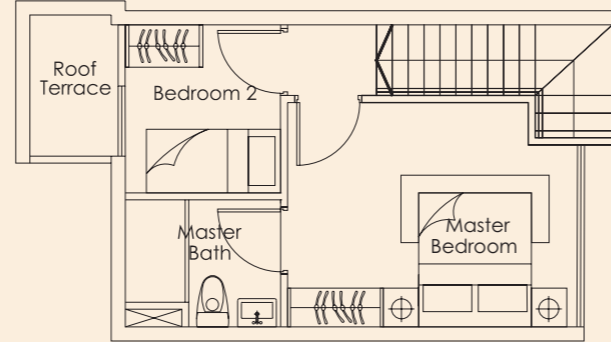
61 sq m
2 bdrm + Study
#05-04



Upper Storey

TYPE PH-5

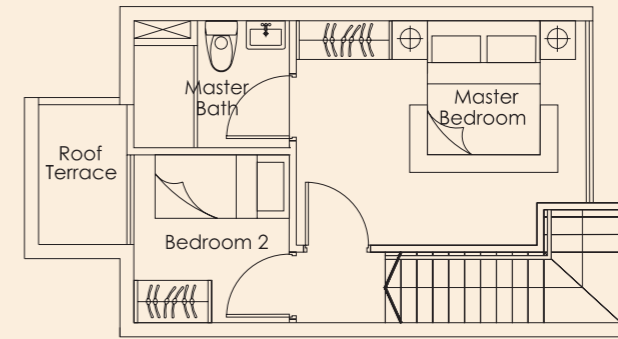
61 sq m
2 bdrm + Study
#05-05



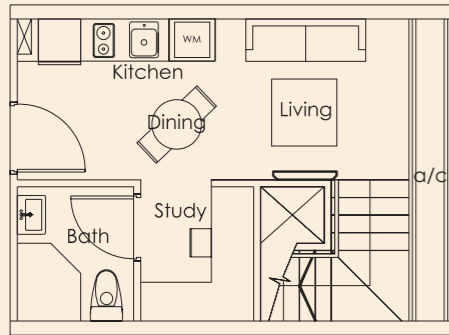
Upper Storey

TYPE PH-6

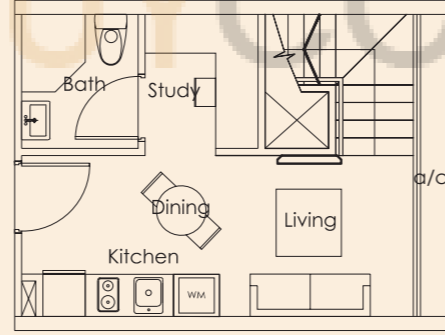
61 sq m
2 bdrm + Study
#05-06



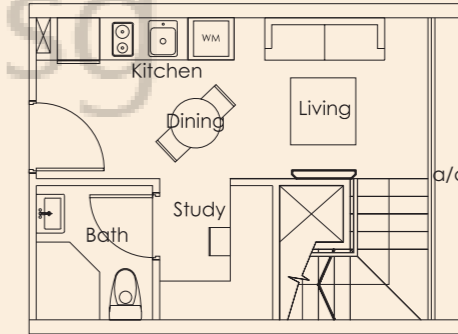
Upper Storey



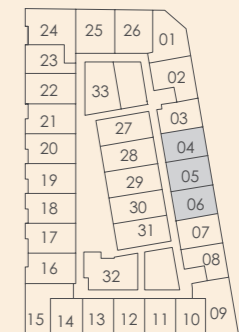
Lower Storey



Lower Storey



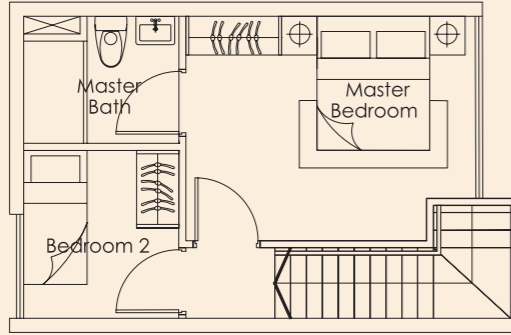
Lower Storey



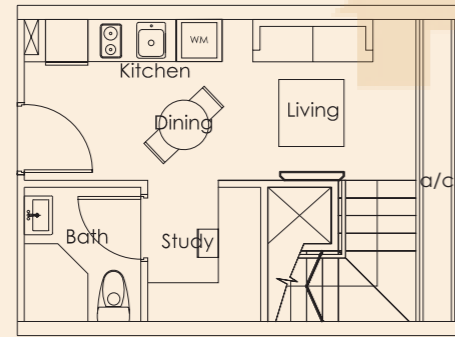
Area includes a/c &/or b/w &/or void &/or roof terrace &/or PES, where applicable. All plans are subject to amendments as approved by the relevant authorities.

TYPE PH-7

58 sq m
2 bdrm + Study
#05-07



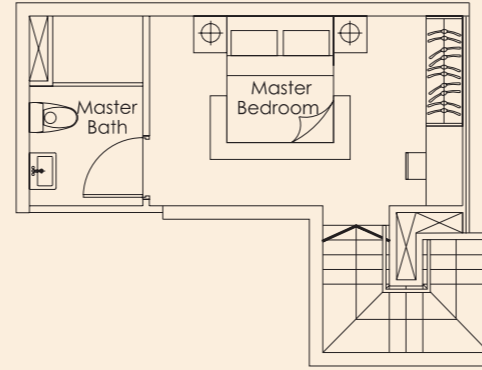
Upper Storey



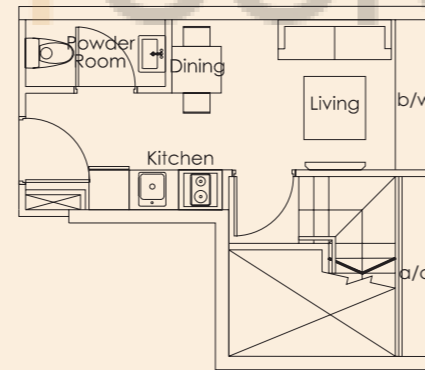
Lower Storey

TYPE PH-8

50 sq m
1 bdrm
#05-08



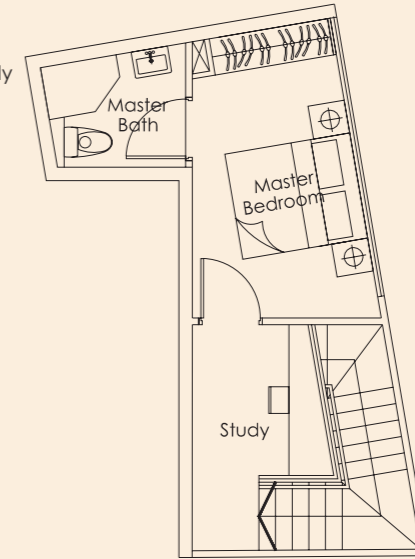
Upper Storey



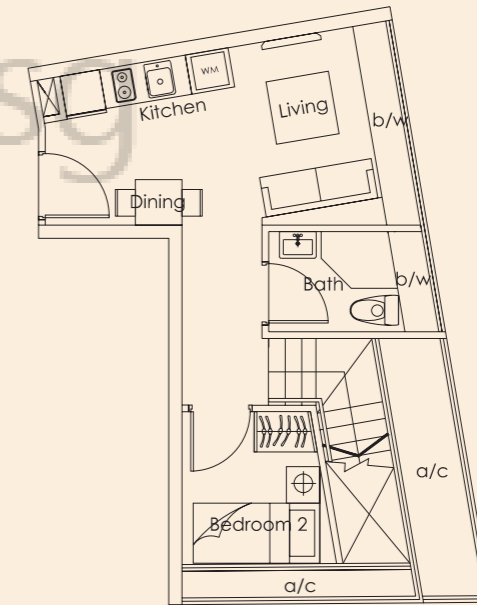
Lower Storey

TYPE PH-9

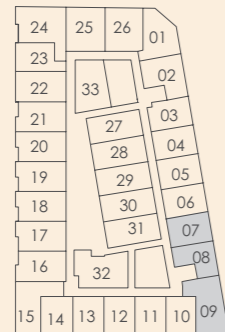
67 sq m
2 bdrm + Study
#05-09



Upper Storey



Lower Storey

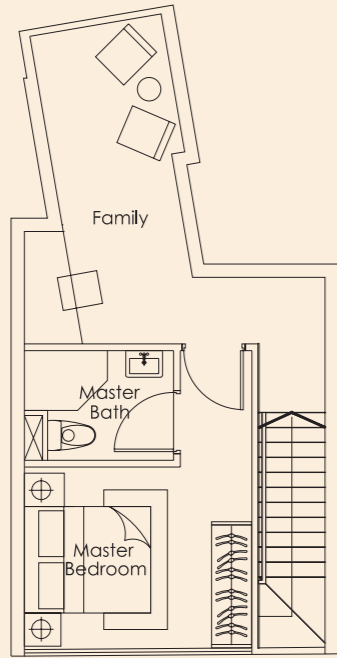


BUYCONDO.SG

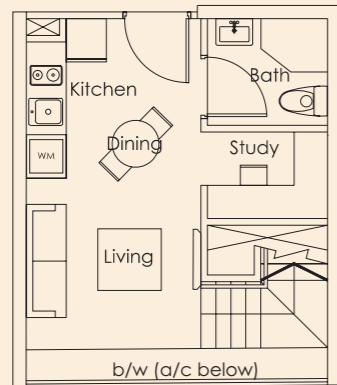
Area includes a/c &/or b/w &/or void &/or roof terrace &/or PES, where applicable. All plans are subject to amendments as approved by the relevant authorities.

TYPE PH-10

62 sq m
1 bdrm + Study + Family
#05-10



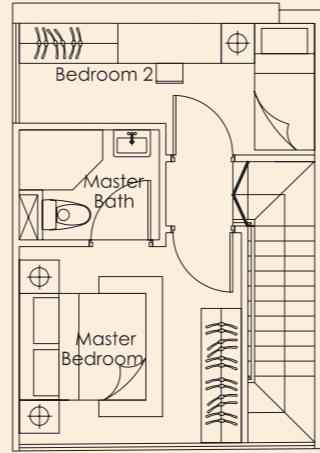
Upper Storey



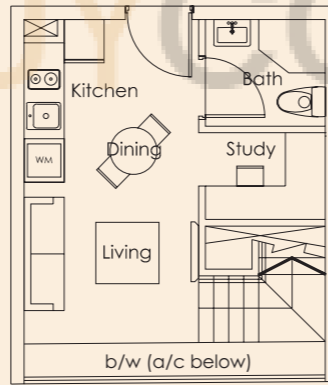
Lower Storey

TYPE PH-11

56 sq m
2 bdrm + Study
#05-11



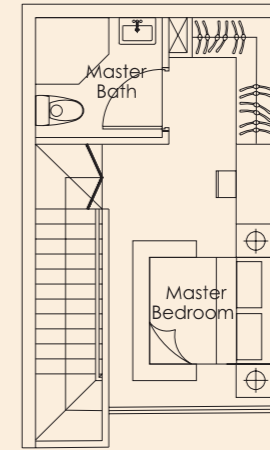
Upper Storey



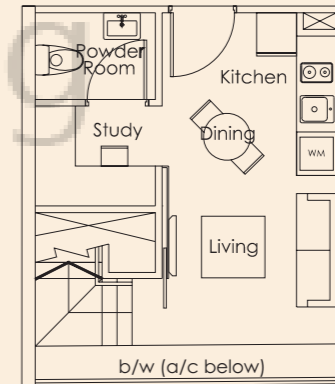
Lower Storey

TYPE PH-12

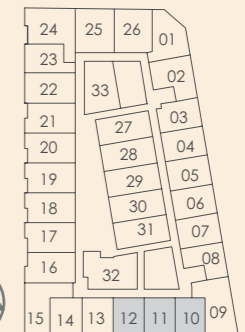
50 sq m
1 bdrm + Study
#05-12



Upper Storey



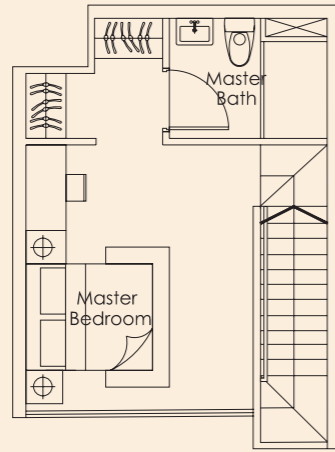
Lower Storey



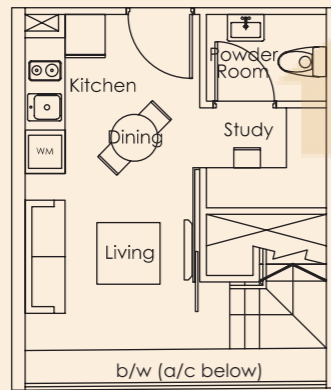
Area includes a/c &/or b/w &/or void &/or roof terrace &/or PES, where applicable. All plans are subject to amendments as approved by the relevant authorities.

TYPE PH-13

55 sq m
1 bdrm + Study
#05-13



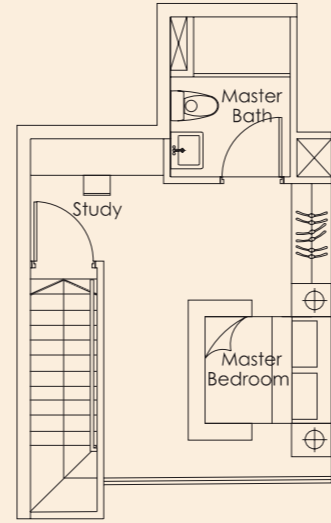
Upper Storey



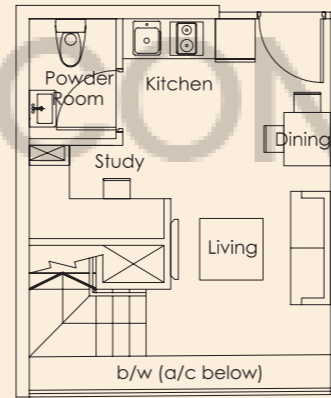
Lower Storey

TYPE PH-14

55 sq m
1 bdrm + Study
#05-14



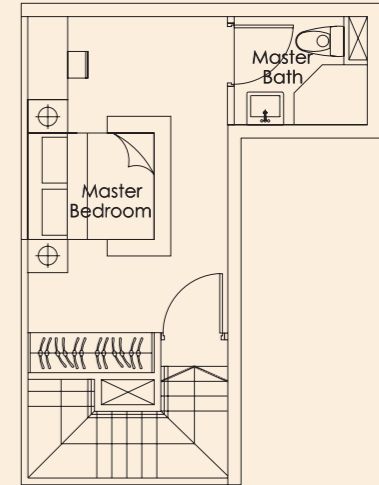
Upper Storey



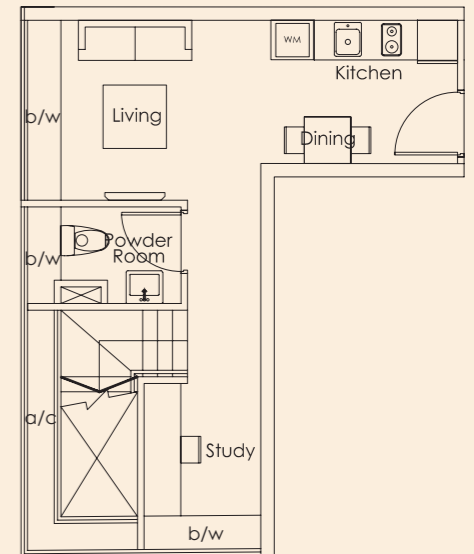
Lower Storey

TYPE PH-15

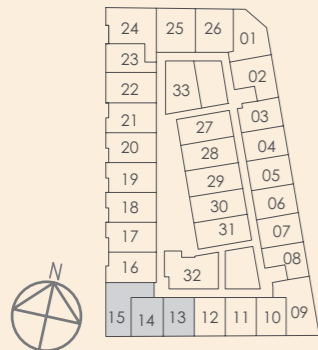
62 sq m
1 bdrm + Study
#05-15



Upper Storey



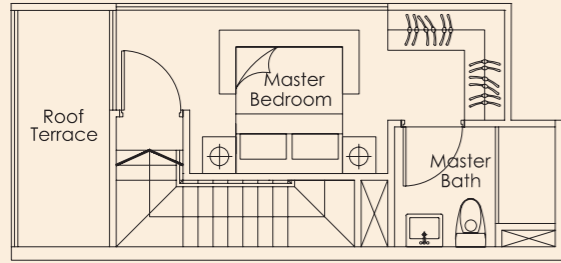
Lower Storey



Area includes a/c &/or b/w &/or void &/or roof terrace &/or PES, where applicable. All plans are subject to amendments as approved by the relevant authorities.

TYPE PH-16

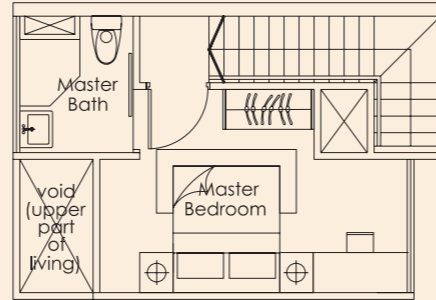
61 sq m
2 bdrm
#05-16



Upper Storey

TYPE PH-17

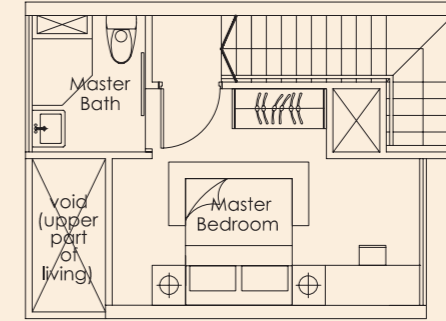
57 sq m
2 bdrm
#05-17



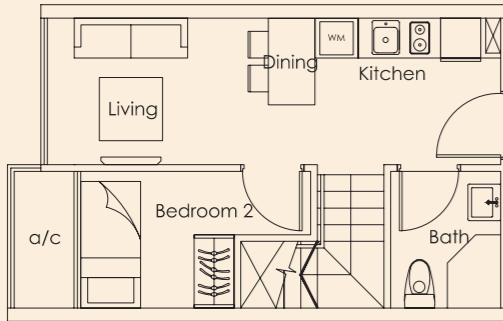
Upper Storey

TYPE PH-18/19/20

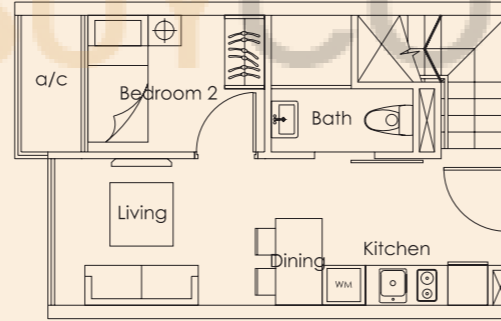
58 sq m
2 bdrm
#05-18
#05-19
#05-20



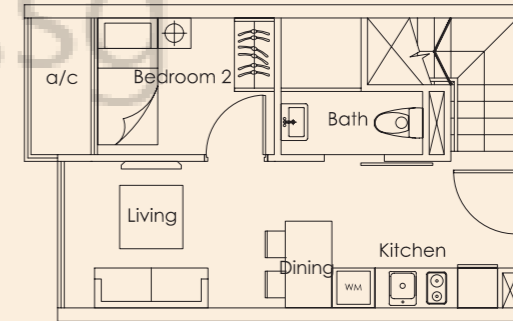
Upper Storey



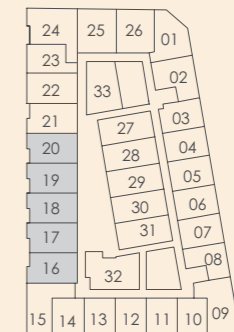
Lower Storey



Lower Storey



Lower Storey



Area includes a/c &/or b/w &/or void &/or roof terrace &/or PES, where applicable. All plans are subject to amendments as approved by the relevant authorities.

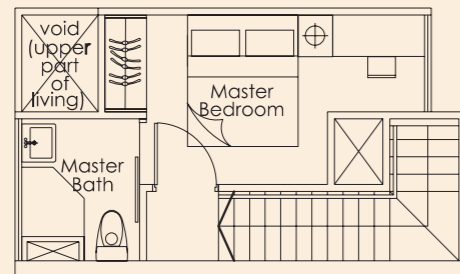


TYPE PH-21

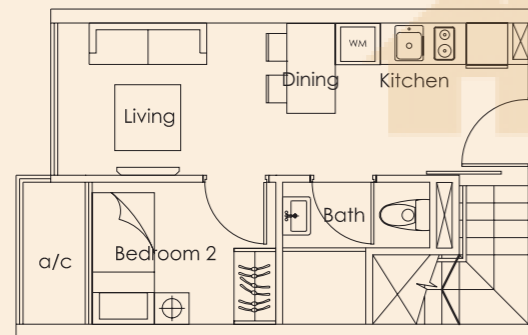
55 sq m

2 bdrm

#05-21



Upper Storey



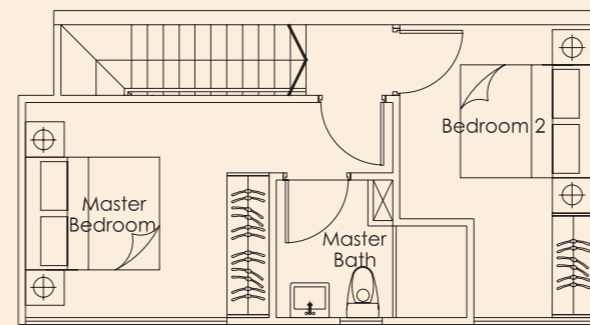
Lower Storey

TYPE PH-22

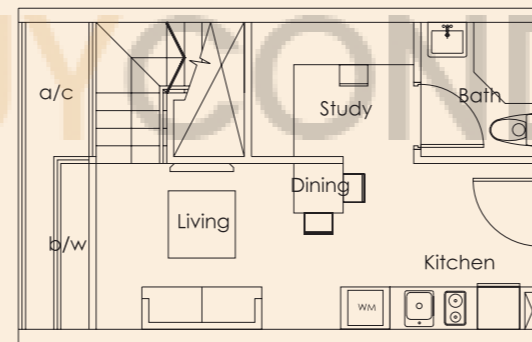
69 sq m

2 bdrm + Study

#05-22



Upper Storey



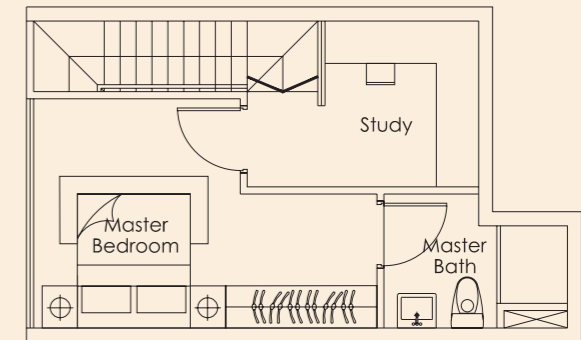
Lower Storey

TYPE PH-23

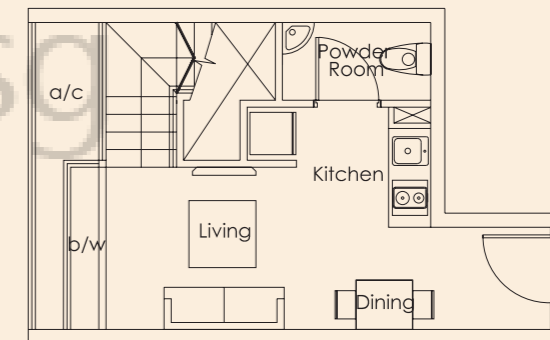
61 sq m

1 bdrm + Study

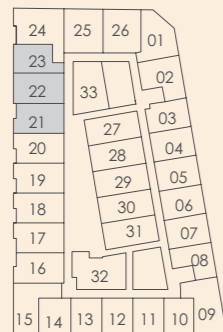
#05-23



Upper Storey



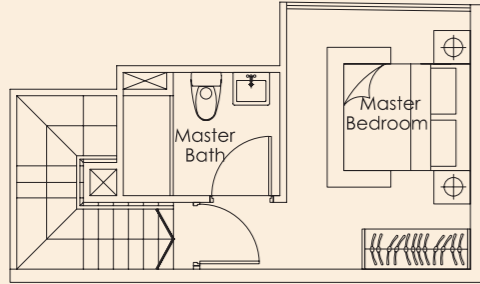
Lower Storey



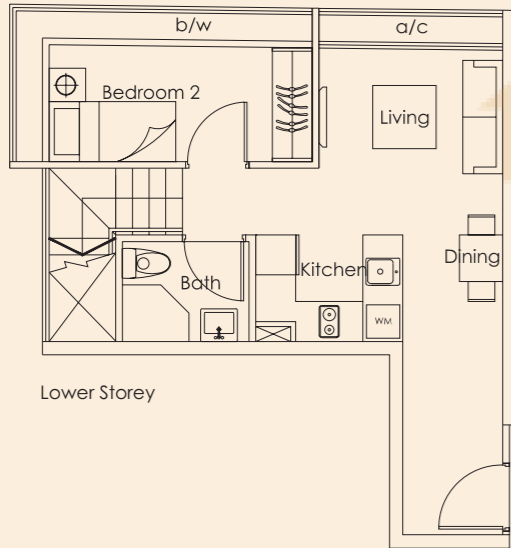
Area includes a/c &/or b/w &/or void &/or roof terrace &/or PES, where applicable. All plans are subject to amendments as approved by the relevant authorities.

TYPE PH-24

65 sq m
2 bdrm
#05-24



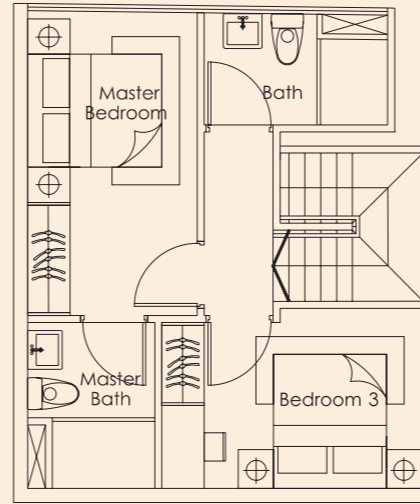
Upper Storey



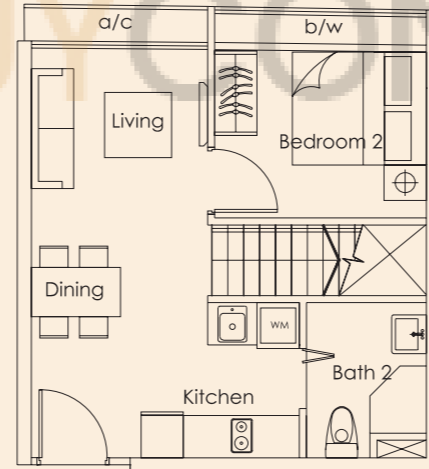
Lower Storey

TYPE PH-25

75 sq m
3 bdrm
#05-25



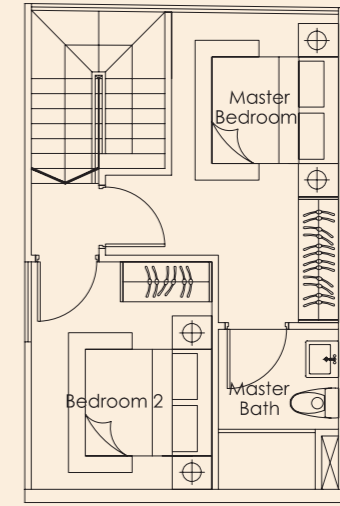
Upper Storey



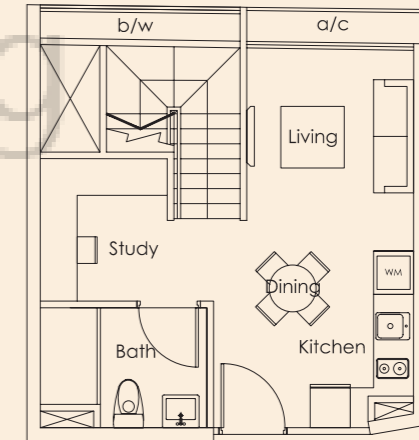
Lower Storey

TYPE PH-26

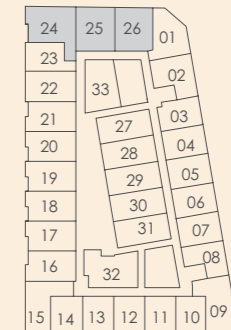
69 sq m
2 bdrm + Study
#05-26



Upper Storey



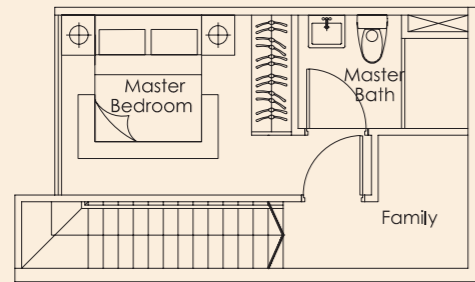
Lower Storey



Area includes a/c &/or b/w &/or void &/or roof terrace &/or PES, where applicable. All plans are subject to amendments as approved by the relevant authorities.

TYPE PH-27

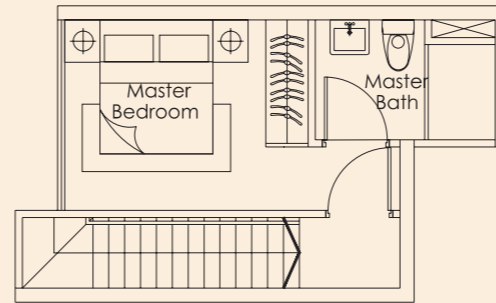
57 sq m
1 bdrm + Study
#05-27



Upper Storey

TYPE PH-28/30

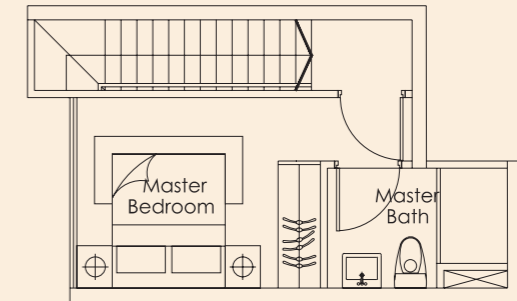
54 sq m
1 bdrm + Study
#05-28
#05-30



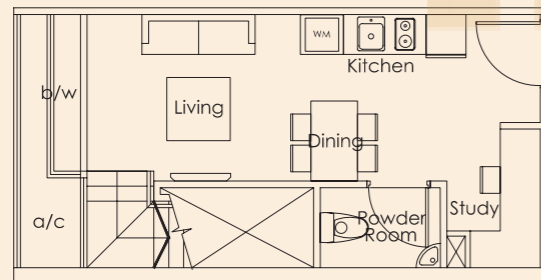
Upper Storey

TYPE PH-29

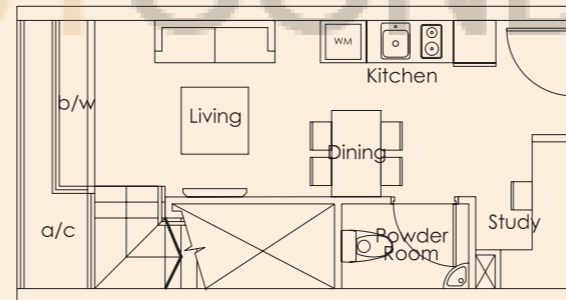
54 sq m
1 bdrm + Study
#05-29



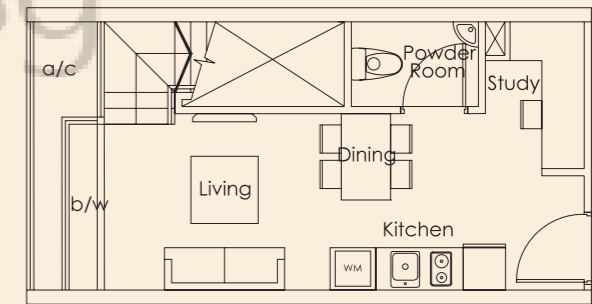
Upper Storey



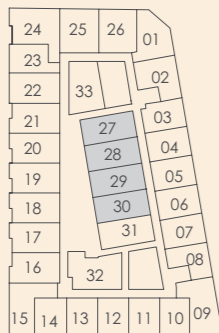
Lower Storey



Lower Storey



Lower Storey



BUY CONDO.SG

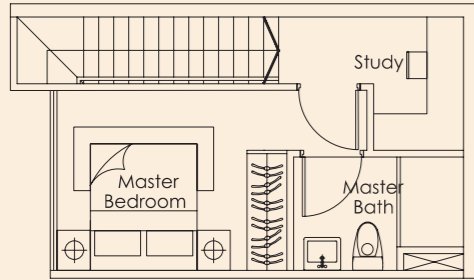
Area includes a/c &/or b/w &/or void &/or roof terrace &/or PES, where applicable. All plans are subject to amendments as approved by the relevant authorities.

TYPE PH-31

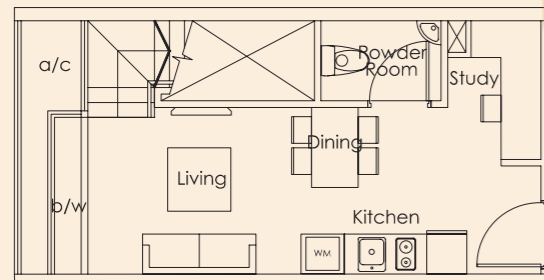
57 sq m

1 bdrm + Study

#05-31



Upper Storey



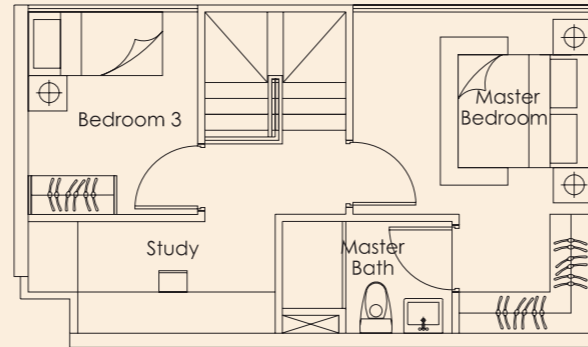
Lower Storey

TYPE PH-32

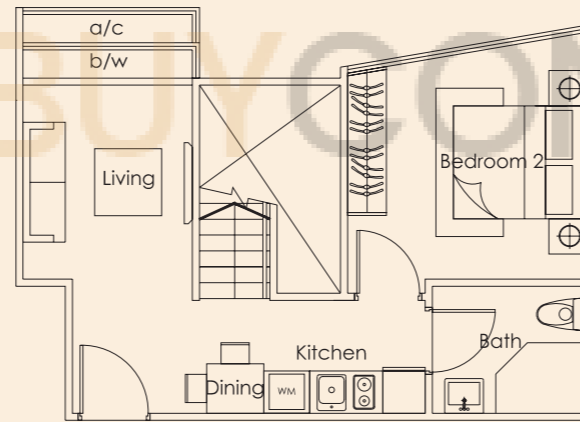
79 sq m

3 bdrm + Study

#05-32



Upper Storey



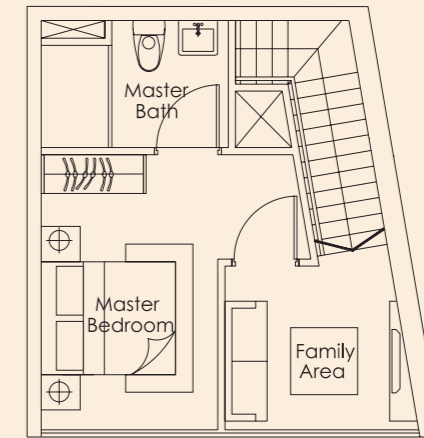
Lower Storey

TYPE PH-33

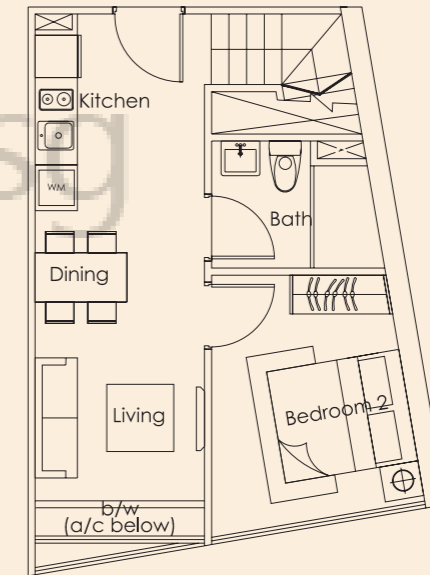
68 sq m

2 bdrm + Family

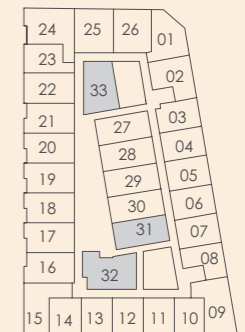
#05-33



Upper Storey



Lower Storey



Area includes a/c &/or b/w &/or void &/or roof terrace &/or PES, where applicable. All plans are subject to amendments as approved by the relevant authorities.