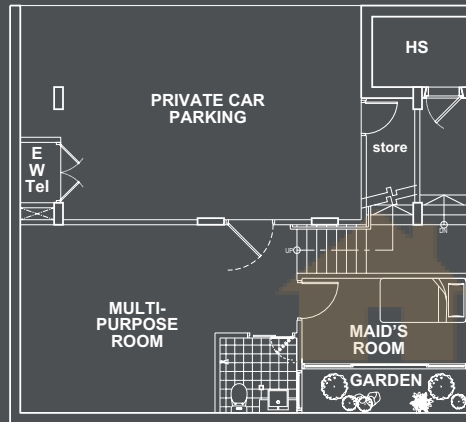
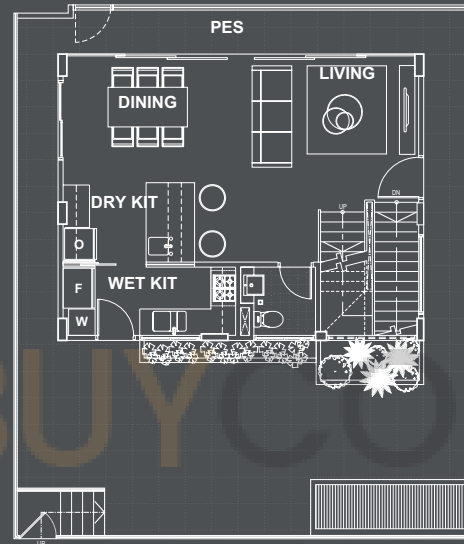


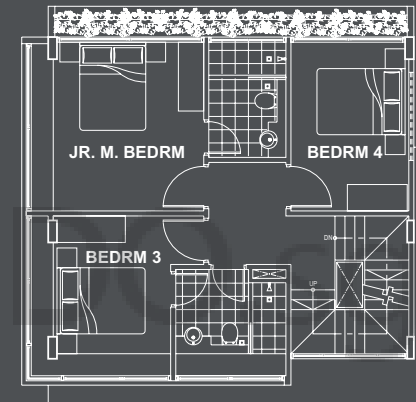
# VILLAS LA VUE



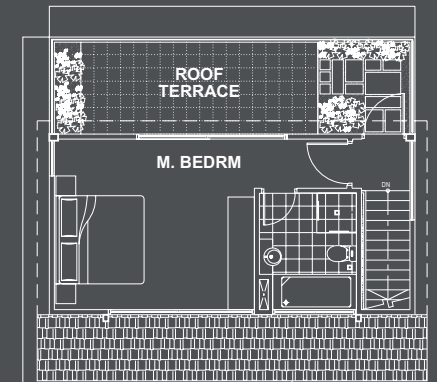
Basement



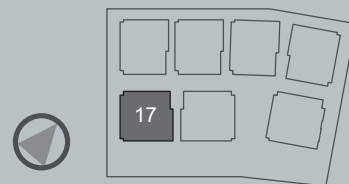
1st storey



2nd storey



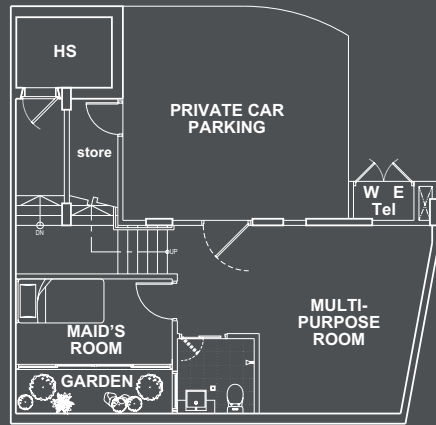
Attic



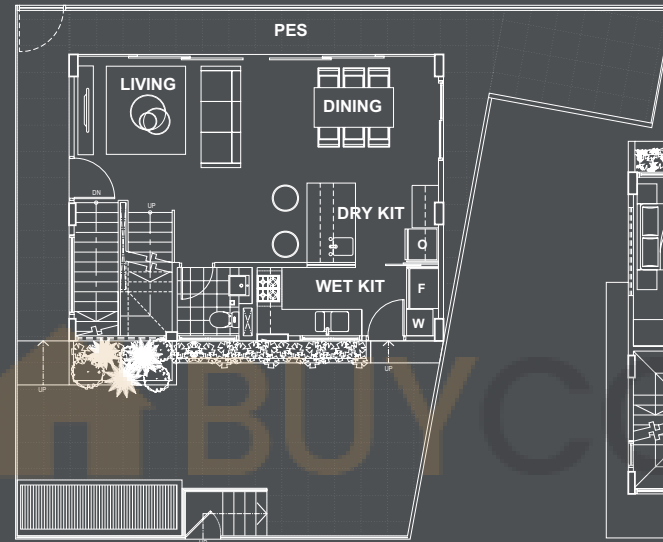
**Unit 17 • 484 sq m / 5210 sq ft**

(inclusive of carpark, planter, bay window, a/c ledge, PES, roof terrace & garden.)

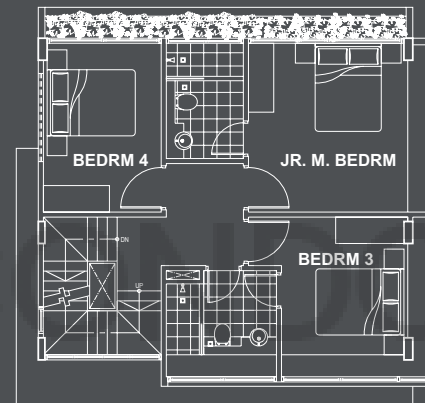
# VILLAS LA VUE



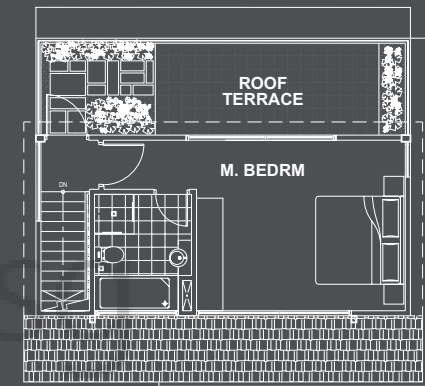
Basement



1st storey



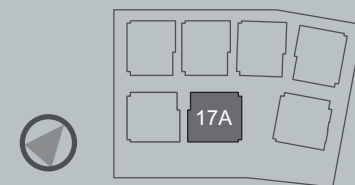
2nd storey



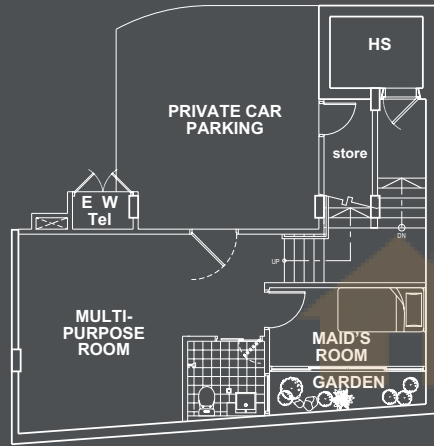
Attic

**Unit 17A • 474 sq m / 5102 sq ft**

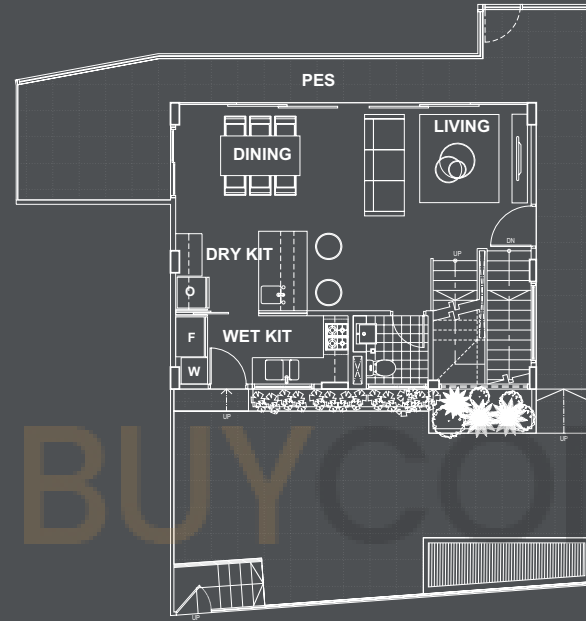
(inclusive of carpark, planter, bay window, a/c ledge, PES, roof terrace & garden.)



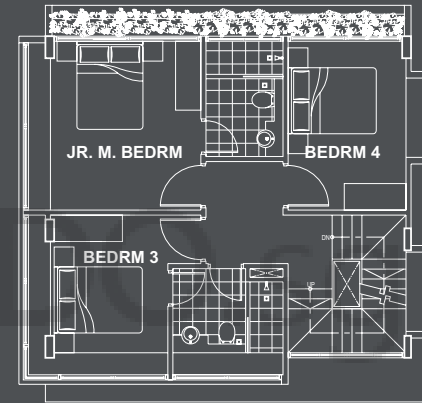
# VILLAS LA VUE



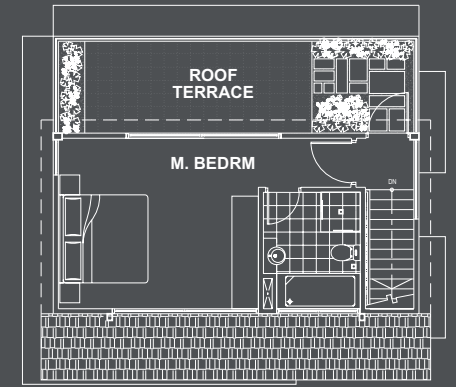
Basement



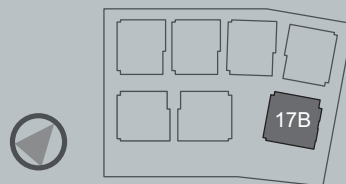
1st storey



2nd storey



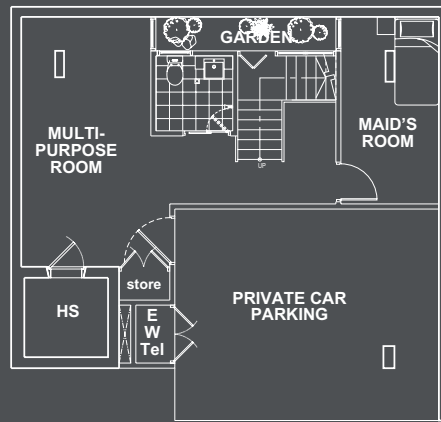
Attic



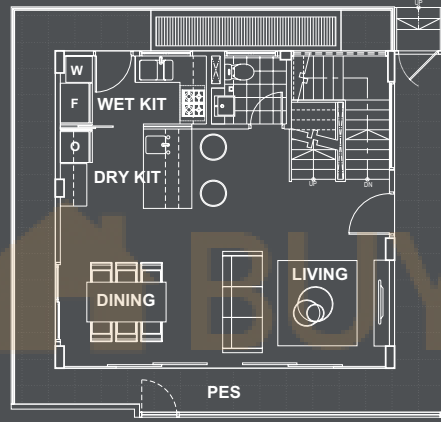
**Unit 17B • 483 sq m / 5199 sq ft**

(inclusive of carpark, planter, bay window, a/c ledge, PES, roof terrace & garden.)

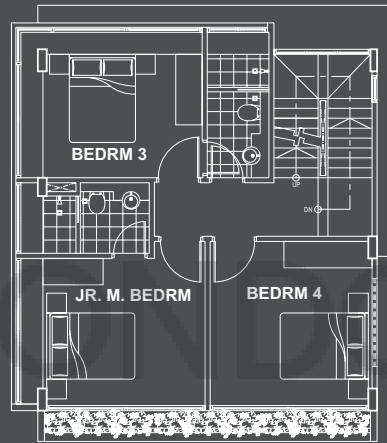
# VILLAS LA VUE



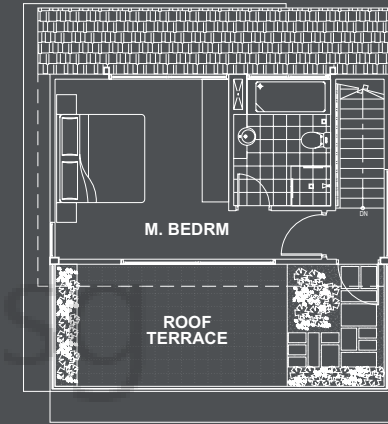
Basement



1st storey



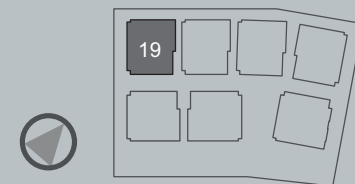
2nd storey



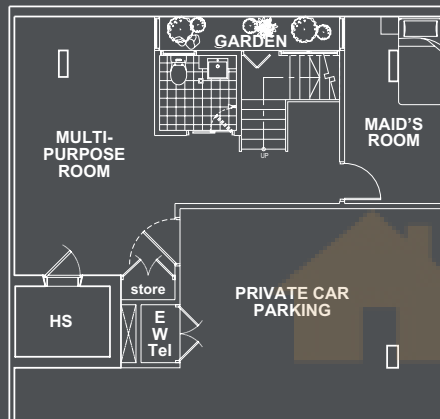
Attic

**Unit 19** • **369 sq m / 3972 sq ft**

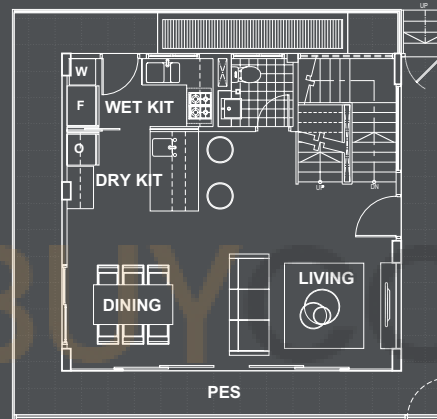
(inclusive of carpark, planter, bay window, a/c ledge, PES, roof terrace & garden.)



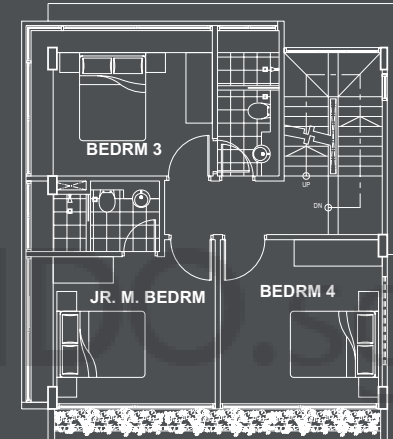
# VILLAS LA VUE



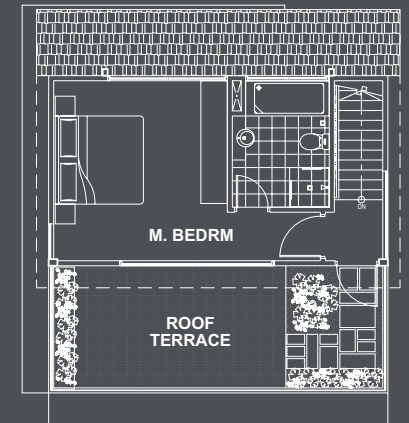
Basement



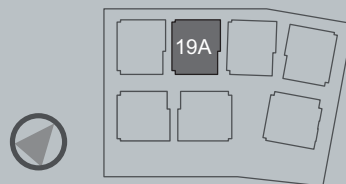
1st storey



2nd storey



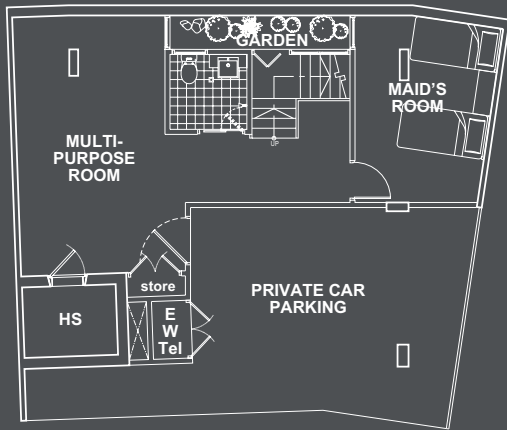
Attic



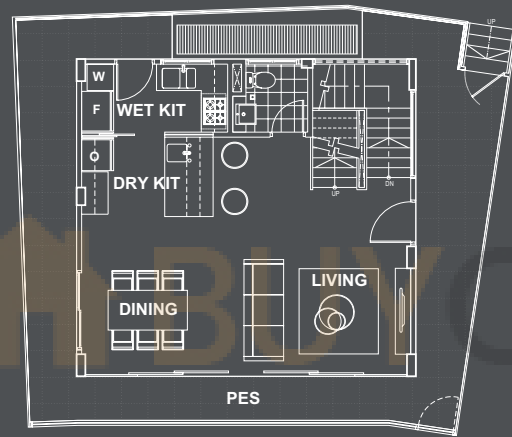
**Unit 19A • 378 sq m / 4069 sq ft**

(inclusive of carpark, planter, bay window, a/c ledge, PES, roof terrace & garden.)

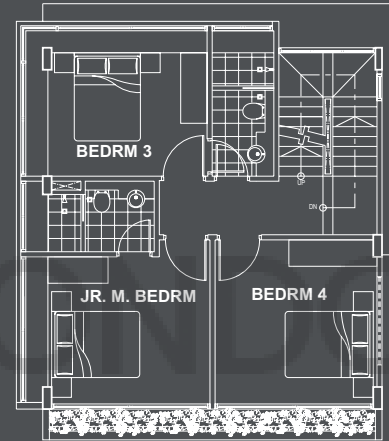
# VILLAS LA VUE



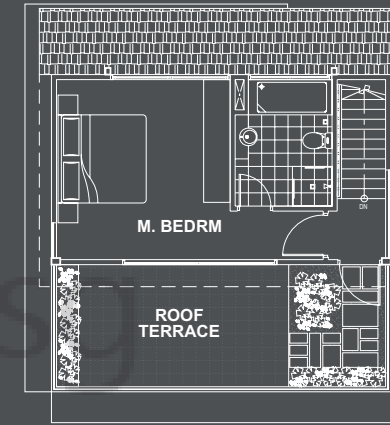
Basement



1st storey



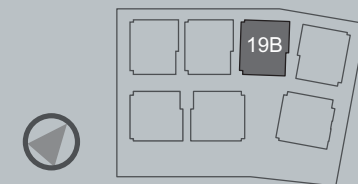
2nd storey



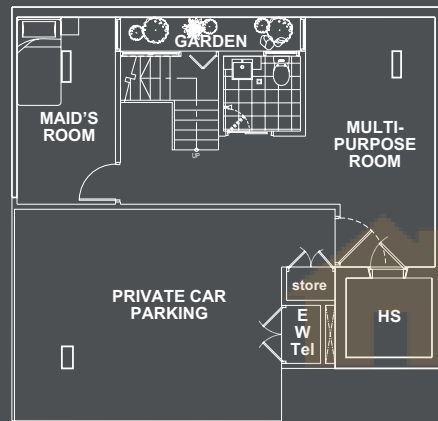
Attic

## Unit 19B • 405 sq m / 4360 sq ft

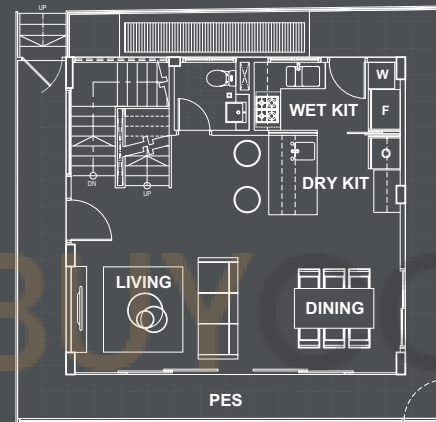
(inclusive of carpark, planter, bay window, a/c ledge, PES, roof terrace & garden.)



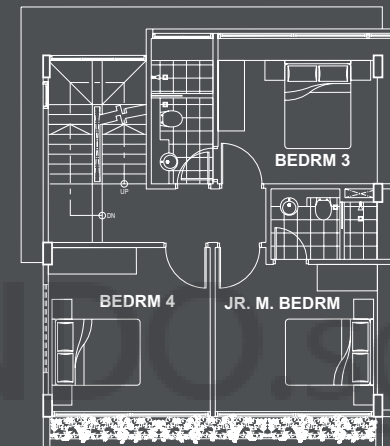
# VILLAS LA VUE



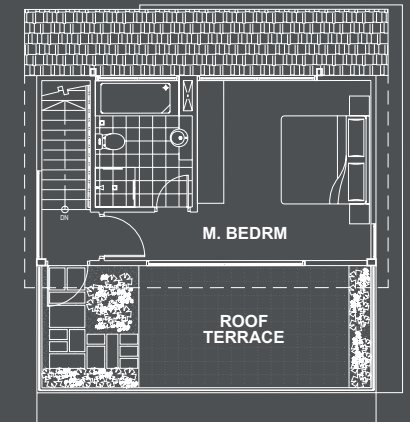
Basement



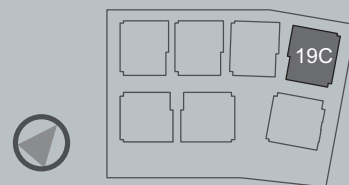
1st storey



2nd storey



Attic



**Unit 19C • 372 sq m / 4004 sq ft**

(inclusive of carpark, planter, bay window, a/c ledge, PES, roof terrace & garden.)