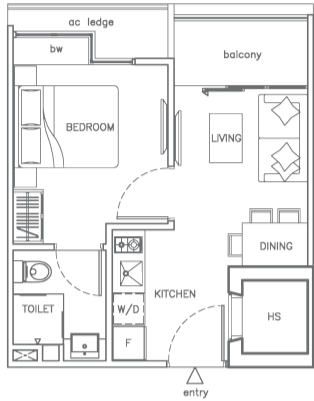


TYPE A (1 BEDROOM)

Area 36 sqm

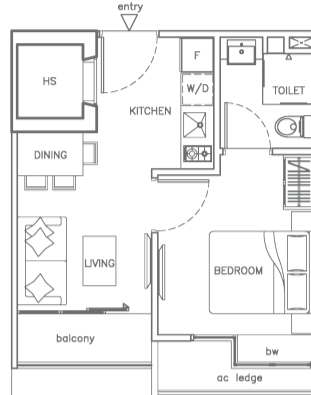
- Unit #02-19* #03-19* #04-19*
 #02-20 #03-20 #04-20
 #02-21* #03-21* #04-21*
 #02-23* #03-23* #04-23*
 #02-24 #03-24 #04-24
 #02-25* #03-25* #04-25*
 #02-26 #03-26 #04-26
 #02-27* #03-27* #04-27*



TYPE A1 (1 BEDROOM)

Area 35 sqm

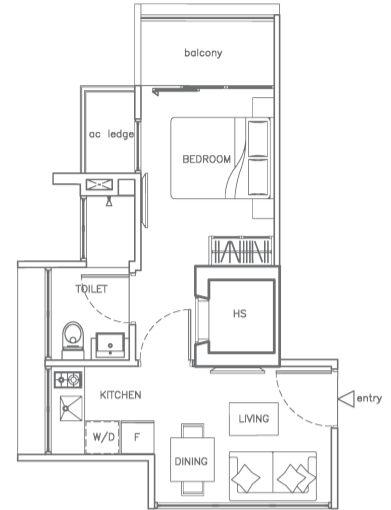
- Unit #02-01 #03-01 #04-01
 #02-02* #03-02* #04-02*
 #02-03 #03-03 #04-03
 #02-30 #03-30 #04-30
 #02-31* #03-31* #04-31*
 #02-32 #03-32 #04-32
 #02-33* #03-33* #04-33*
 #02-34 #03-34 #04-34
 #02-35* #03-35* #04-35*



TYPE B (1 BEDROOM)

Area 35 sqm

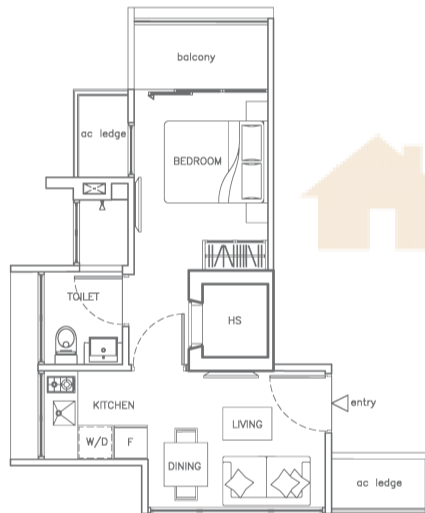
- Unit #02-18



TYPE B1 (1 BEDROOM)

Area 37 sqm

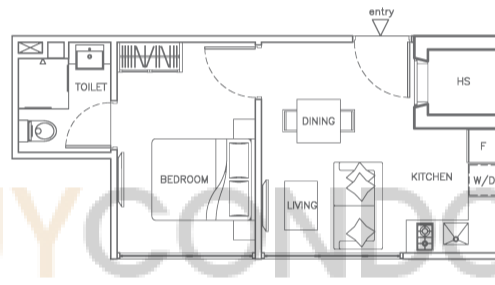
- Unit #03-18 #04-18



TYPE C (1 BEDROOM)

Area 34 sqm

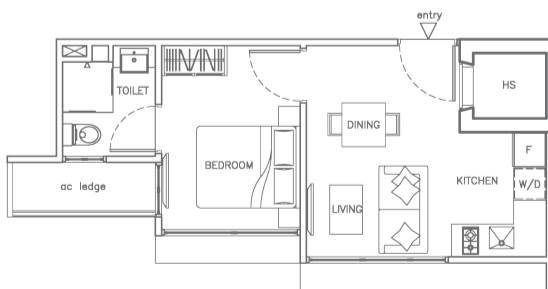
- Unit #02-17



TYPE C1 (1 BEDROOM)

Area 34 sqm

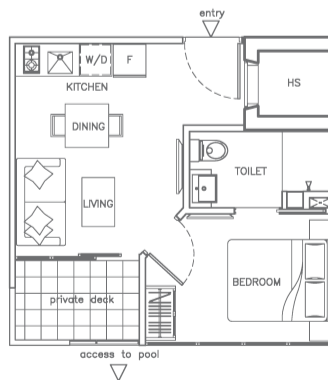
- Unit #03-17 #04-17



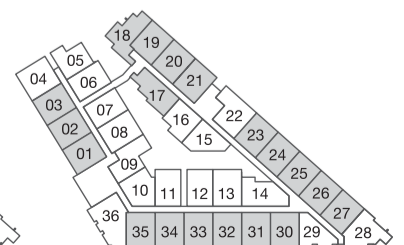
TYPE D (1 BEDROOM)

Area 33 sqm

- Unit #02-16



2ND STOREY PLAN

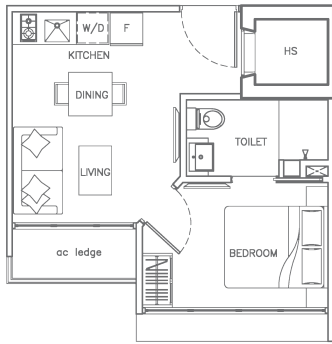


3RD & 4TH STOREY PLAN

* MIRROR IMAGE UNIT
 All plans are subject to amendments as approved by the relevant authorities. Floor areas are approximate measurements and subject to final survey.

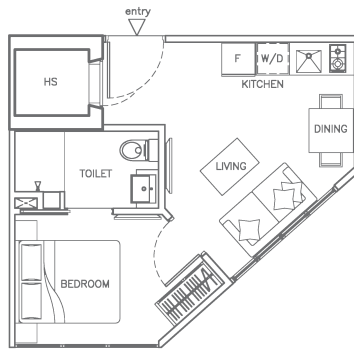
TYPE D1 (1 BEDROOM)

Area 32 sqm
Unit #03-16 #04-16



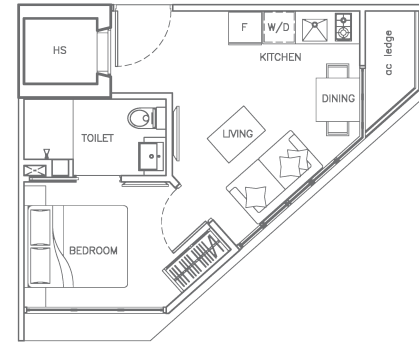
TYPE E (1 BEDROOM)

Area 31 sqm
Unit #02-15



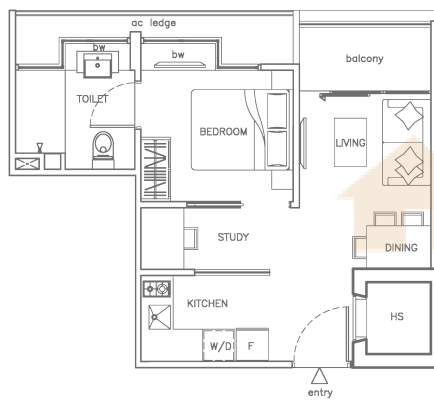
TYPE E1 (1 BEDROOM)

Area 31 sqm
Unit #03-15 #04-15



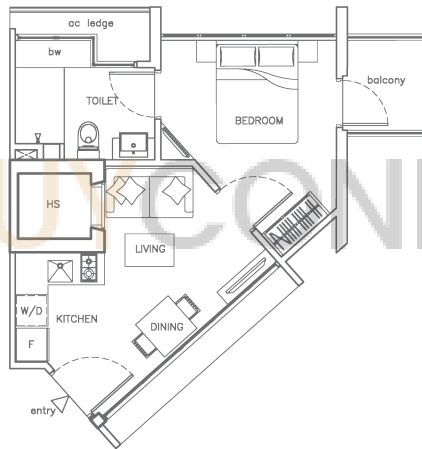
TYPE F (1 BEDROOM + STUDY)

Area 43 sqm
Unit #02-22 #03-22 #04-22



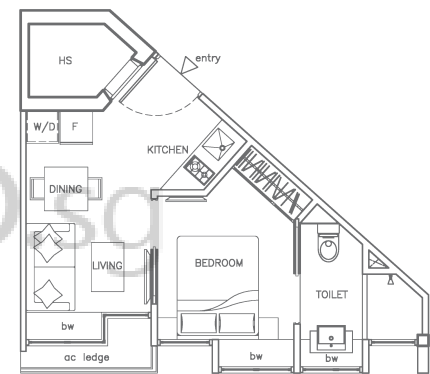
TYPE G (1 BEDROOM)

Area 37 sqm
Unit #02-28 #03-28 #04-28



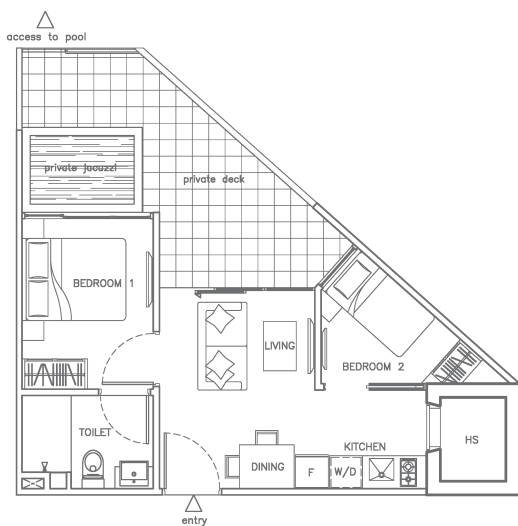
TYPE H (1 BEDROOM)

Area 32 sqm
Unit #02-29 #03-29 #04-29

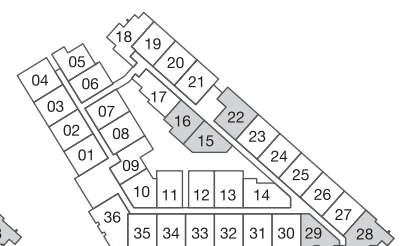


TYPE J (2-BEDROOM)

Area 52 sqm
Unit #02-14



2ND STOREY PLAN

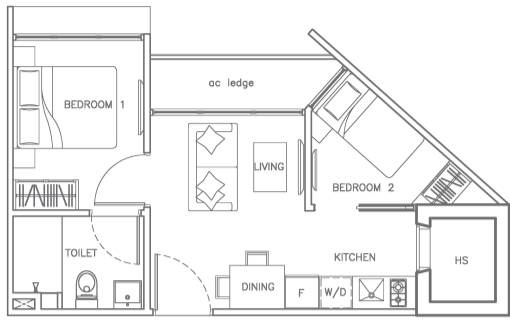


3RD & 4TH STOREY PLAN

All plans are subject to amendments as approved by the relevant authorities. Floor areas are approximate measurements and subject to final survey.

TYPE J1 (2-BEDROOM)

Area 39 sqm
Unit #03-14 #04-14



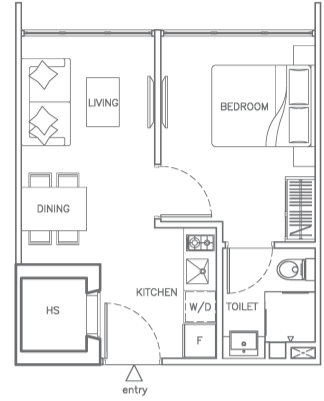
TYPE K (1 BEDROOM)

Area 45 sqm
Unit #02-13



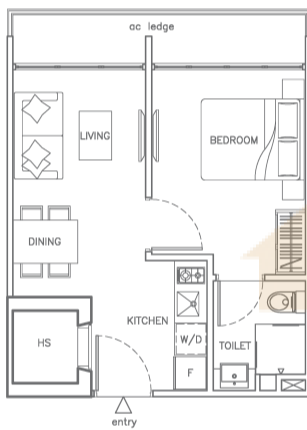
TYPE K1 (1 BEDROOM)

Area 39 sqm
Unit #02-08



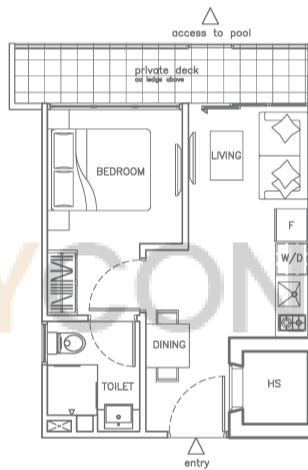
TYPE K2 (1 BEDROOM)

Area 39 sqm
Unit #03-08 #04-08
#03-13 #04-13



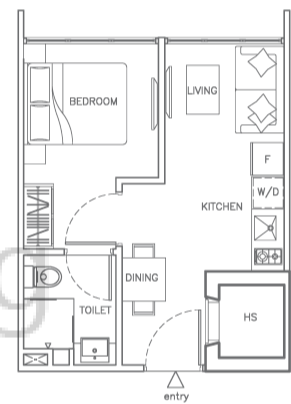
TYPE L (1 BEDROOM)

Area 36 sqm
Unit #02-11*
#02-12



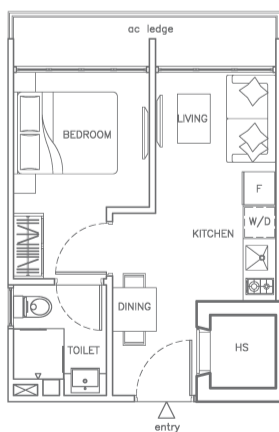
TYPE L1 (1 BEDROOM)

Area 35 sqm
Unit #02-06*
#02-07



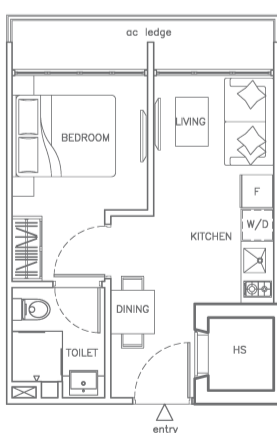
TYPE L2 (1 BEDROOM)

Area 35 sqm
Unit #03-11* #04-11*
#03-12 #04-12

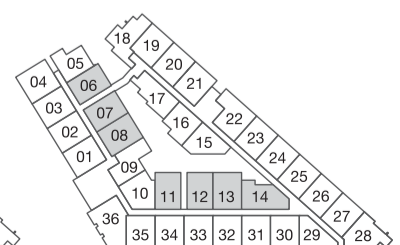


TYPE L3 (1 BEDROOM)

Area 35 sqm
Unit #03-06* #04-06*
#03-07 #04-07



2ND STOREY PLAN



3RD & 4TH STOREY PLAN

* MIRROR IMAGE UNIT
All plans are subject to amendments as approved by the relevant authorities. Floor areas are approximate measurements and subject to final survey.

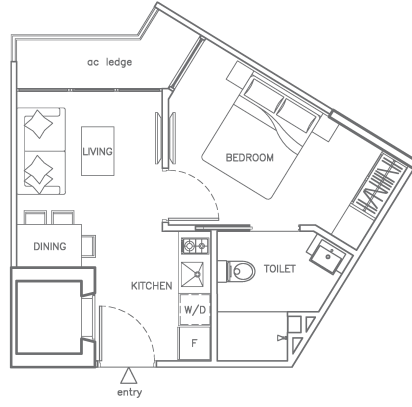
TYPE M (1 BEDROOM)

Area 41 sqm
Unit #02-10



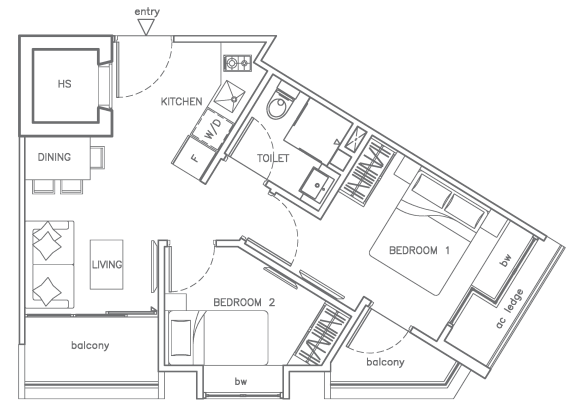
TYPE M1 (1 BEDROOM)

Area 37 sqm
Unit #03-10 #04-10



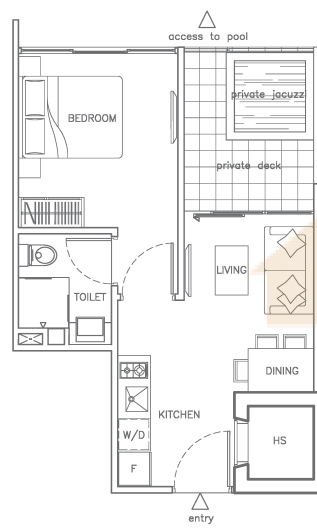
TYPE N (2-BEDROOM)

Area 49 sqm
Unit #02-36 #03-36 #04-36



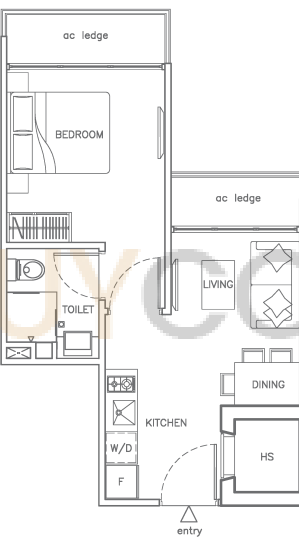
TYPE P (1 BEDROOM)

Area 43 sqm
Unit #02-09



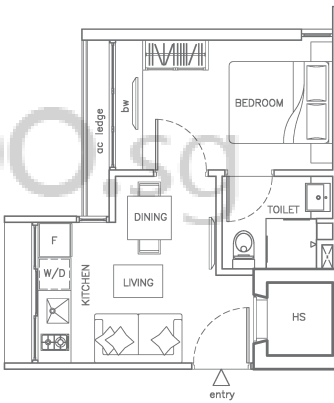
TYPE P1 (1 BEDROOM)

Area 38 sqm
Unit #03-09 #04-09



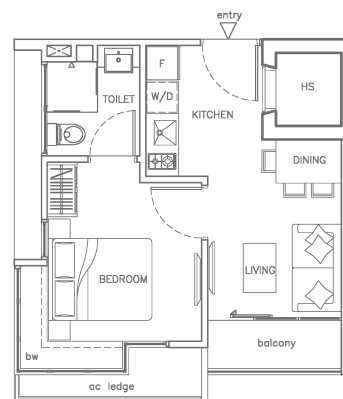
TYPE Q (1 BEDROOM)

Area 30 sqm
Unit #02-05 #03-05 #04-05

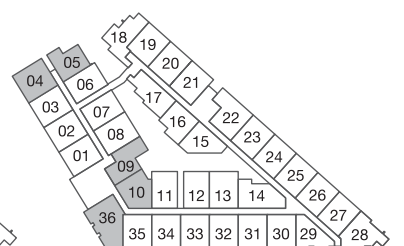


TYPE R (1 BEDROOM)

Area 36 sqm
Unit #02-04 #03-04 #04-04



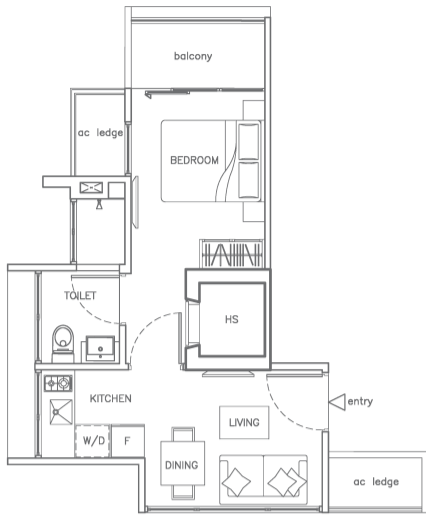
2ND STOREY PLAN



3RD & 4TH STOREY PLAN

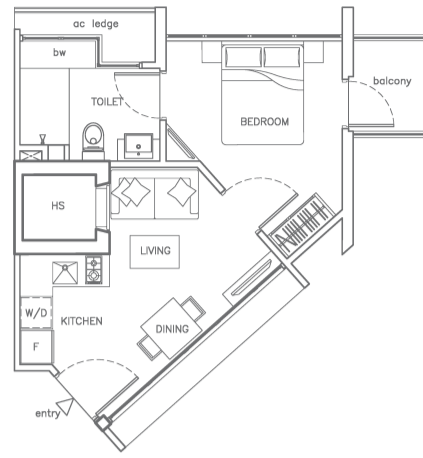
TYPE B2 (1 BEDROOM)

Area 37 sqm
Unit #05-18 (high ceiling)



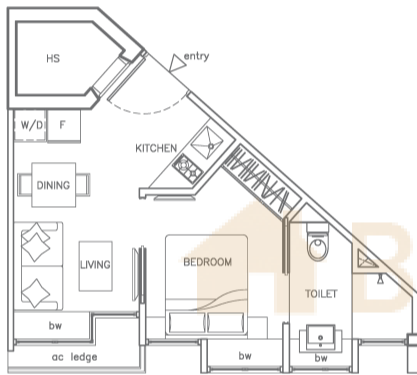
TYPE G1 (1 BEDROOM)

Area 37 sqm
Unit #05-28 (high ceiling)



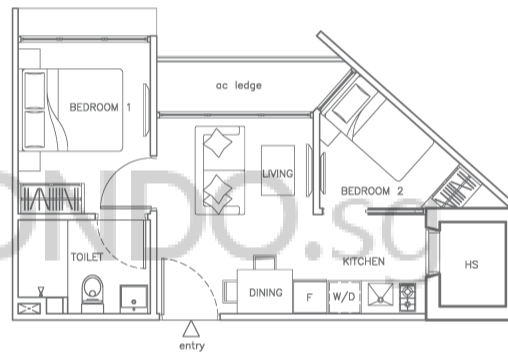
TYPE H1 (1 BEDROOM)

Area 32 sqm
Unit #05-29 (high ceiling)



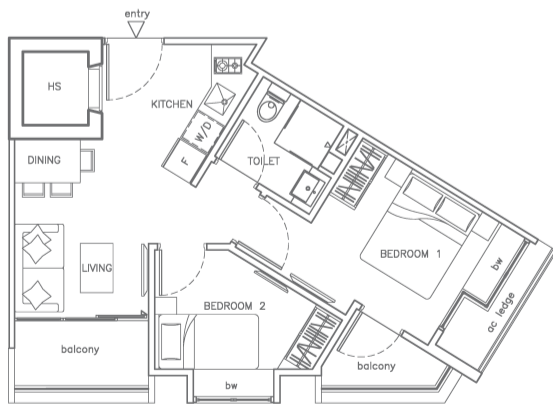
TYPE J2 (2-BEDROOM)

Area 39 sqm
Unit #05-14 (high ceiling)



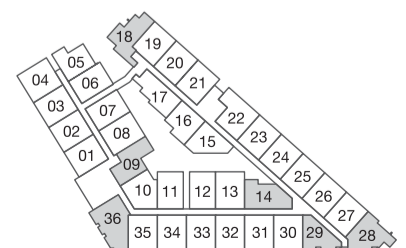
TYPE N1 (2-BEDROOM)

Area 49 sqm
Unit #05-36 (high ceiling)



TYPE P2 (1-BEDROOM)

Area 38 sqm
Unit #05-09 (high ceiling)

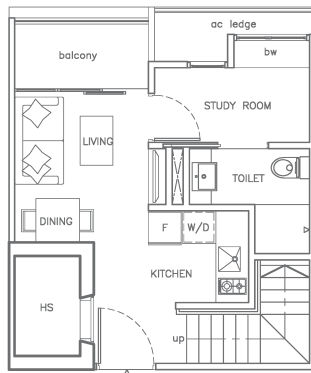


5TH STOREY PLAN

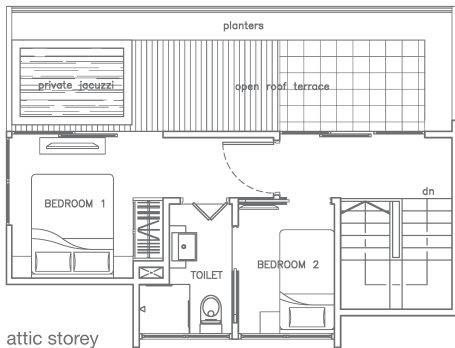


TYPE PHA (2-BEDROOM + STUDY)

Area 82 sqm
Unit #05-19



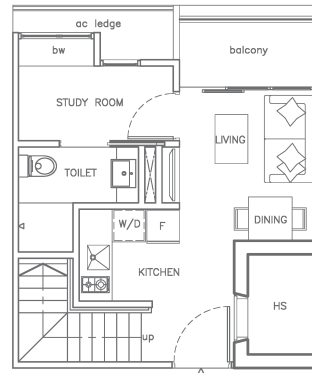
5th storey



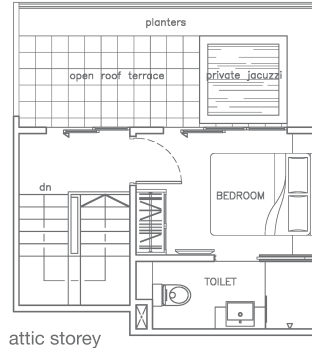
attic storey

TYPE PHA1 (1 BEDROOM + STUDY)

Area 68 sqm
Unit #05-20
#05-21*



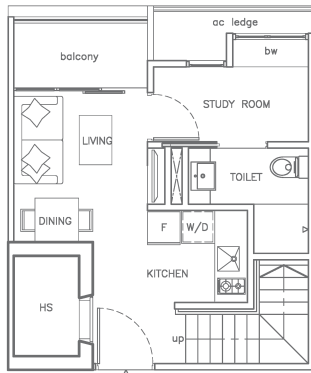
5th storey



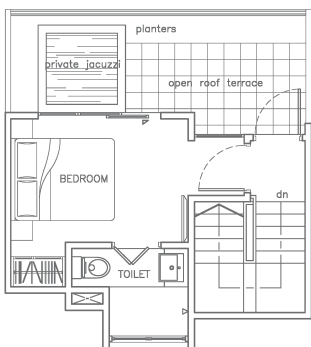
attic storey

TYPE PHA2 (1 BEDROOM + STUDY)

Area 67 sqm
Unit #05-23 #05-25
#05-24* #05-26*



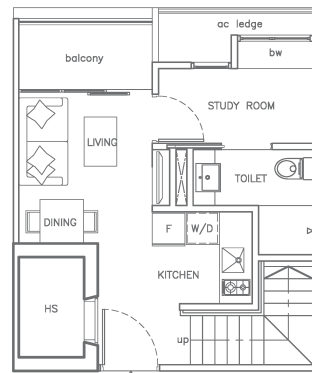
5th storey



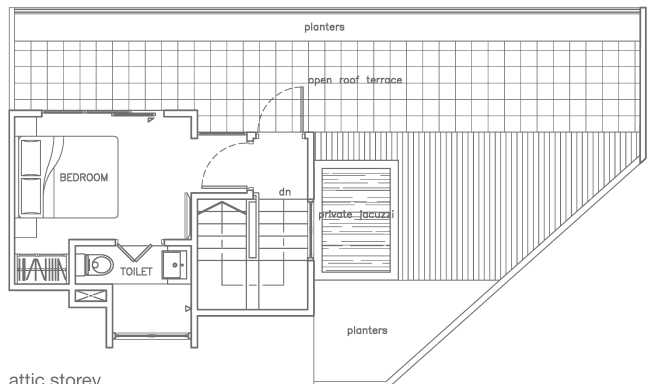
attic storey

TYPE PHA3 (1 BEDROOM + STUDY)

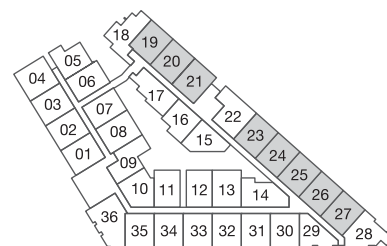
Area 99 sqm
Unit #05-27



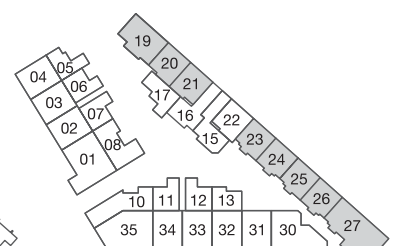
5th storey



attic storey



5TH STOREY PLAN

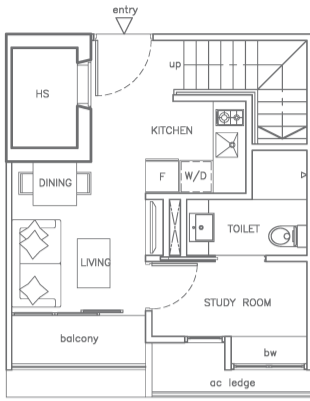


ATTIC STOREY PLAN

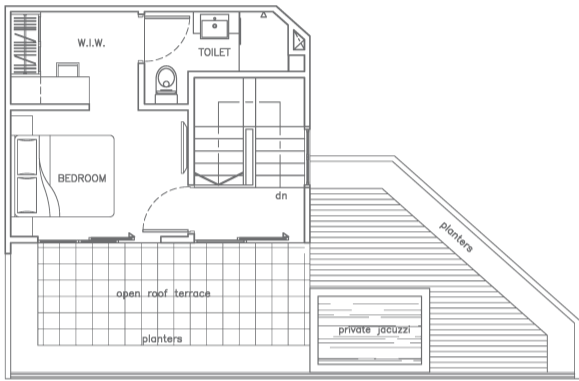
* MIRROR IMAGE UNIT
All plans are subject to amendments as approved by the relevant authorities. Floor areas are approximate measurements and subject to final survey.

TYPE PHA4 (1 BEDROOM + STUDY)

Area 87 sqm
Unit #05-30



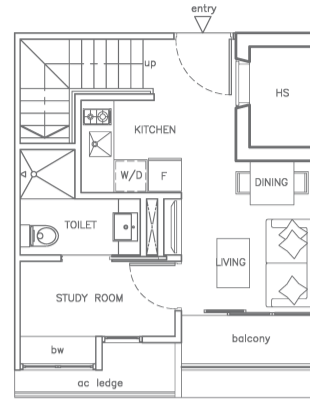
5th storey



attic storey

TYPE PHA5 (1 BEDROOM + STUDY)

Area 73 sqm
Unit #05-02 #05-32*
#05-03* #05-33
#05-31 #05-34*



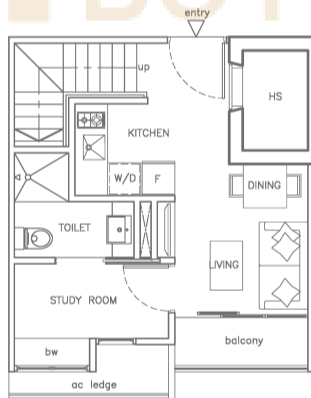
5th storey



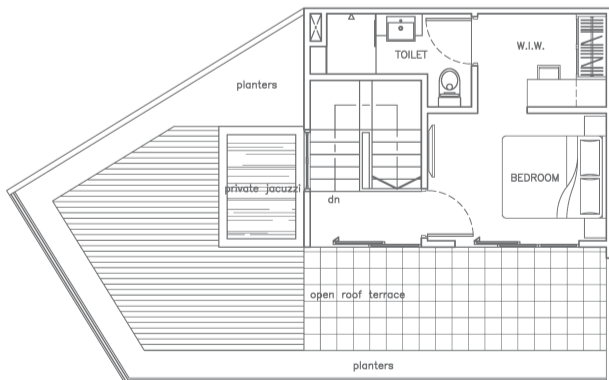
attic storey

TYPE PHA6 (1 BEDROOM + STUDY)

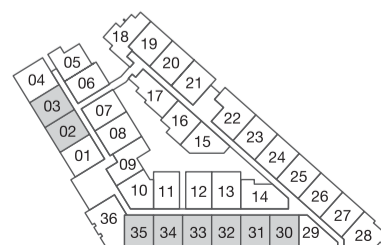
Area 97 sqm
(Unit #05-35)



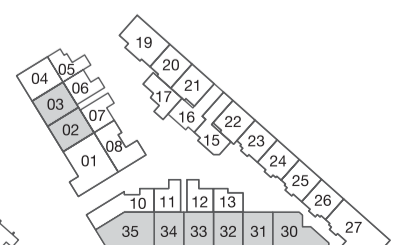
5th storey



attic storey



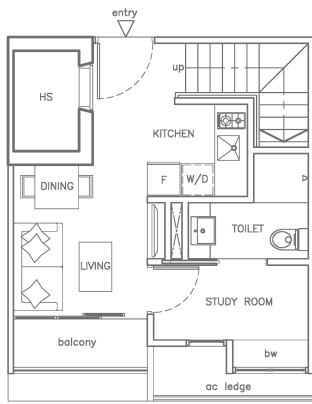
5TH STOREY PLAN



ATTIC STOREY PLAN

* MIRROR IMAGE UNIT
All plans are subject to amendments as approved by the relevant authorities. Floor areas are approximate measurements and subject to final survey.

TYPE PHA7 (1 BEDROOM + STUDY)
 Area 100 sqm
 Unit #05-01

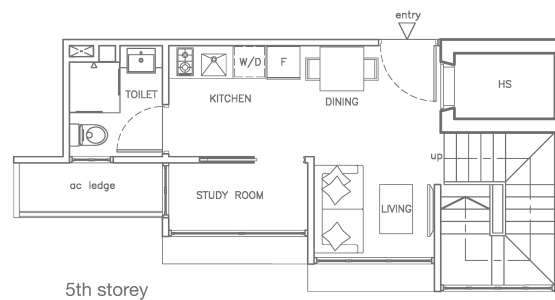


5th storey



attic storey

TYPE PHC (1 BEDROOM + STUDY)
 Area 69 sqm
 Unit #05-17

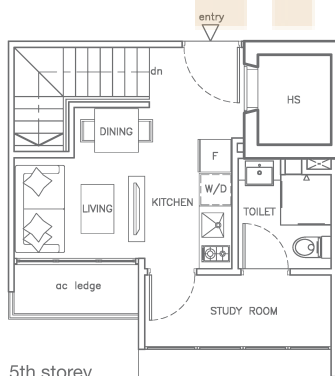


5th storey

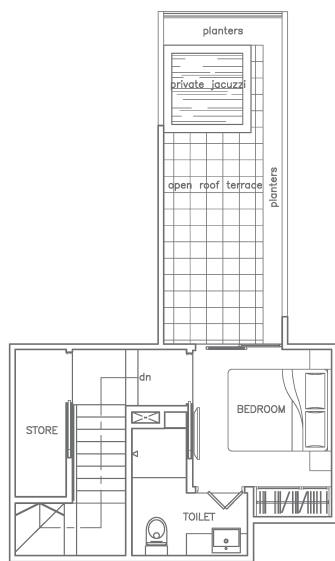


attic storey

TYPE PHD (1 BEDROOM + STUDY)
 Area 60 sqm
 Unit #05-16



5th storey

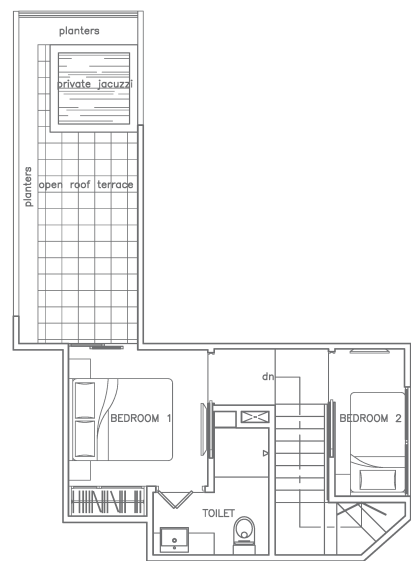


attic storey

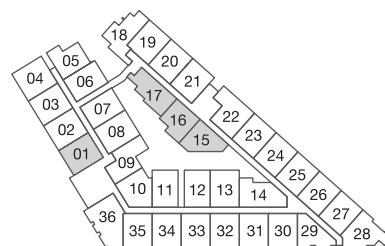
TYPE PHE (2-BEDROOM + STUDY)
 Area 59 sqm
 Unit #05-15



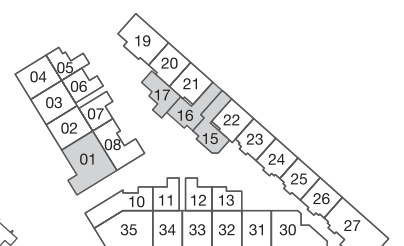
5th storey



attic storey



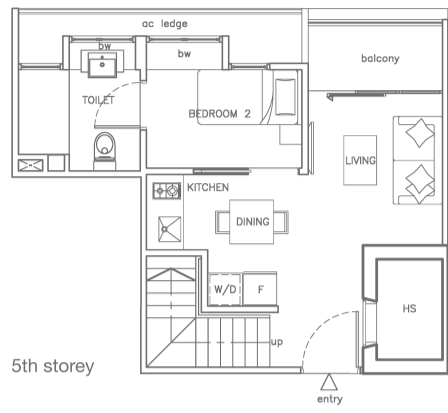
5TH STOREY PLAN



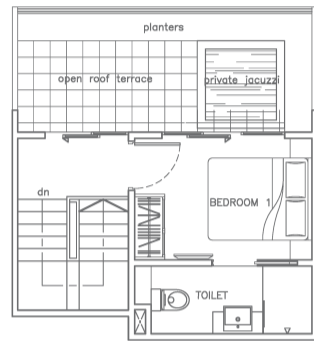
ATTIC STOREY PLAN

TYPE PHF (2-BEDROOM)

Area 90 sqm
Unit #05-22



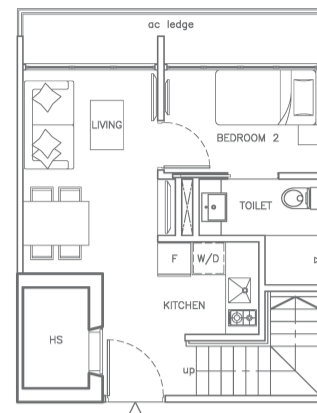
5th storey



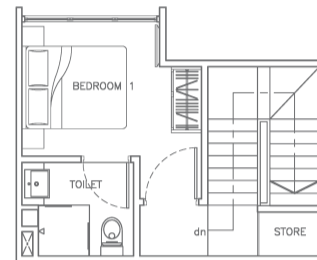
attic storey

TYPE PHK2 (2-BEDROOM)

Area 72 sqm
Unit #05-13



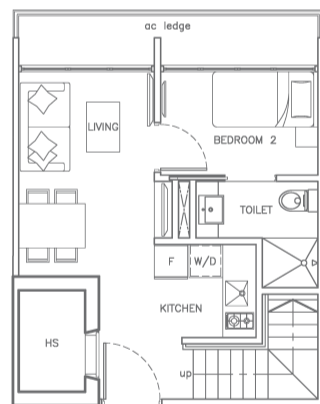
5th storey



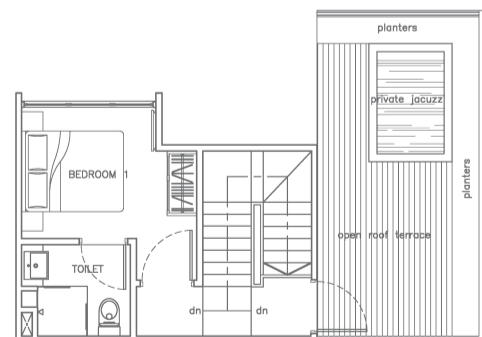
attic storey

TYPE PHK3 (2-BEDROOM)

Area 91 sqm
Unit #05-08



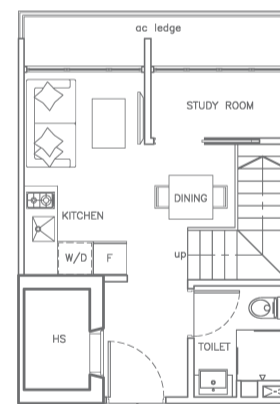
5th storey



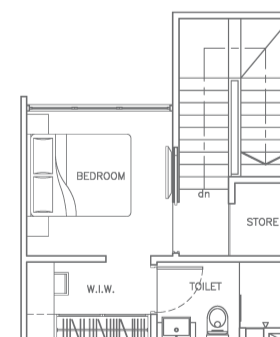
attic storey

TYPE PHL2 (1 BEDROOM + STUDY)

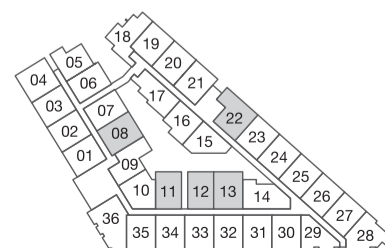
Area 65 sqm
Unit #05-11
#05-12*



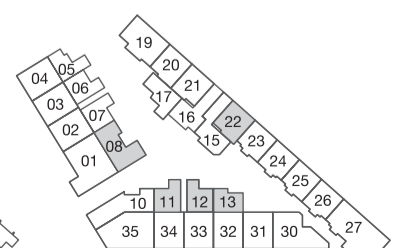
5th storey



attic storey



5TH STOREY PLAN

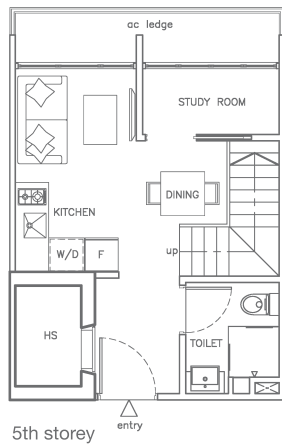


ATTIC STOREY PLAN

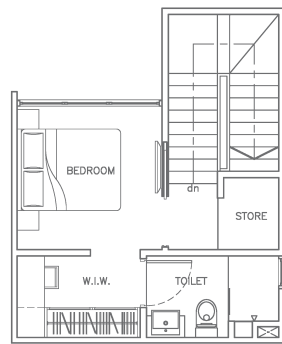
* MIRROR IMAGE UNIT
All plans are subject to amendments as approved by the relevant authorities. Floor areas are approximate measurements and subject to final survey.

TYPE PHL3 (1 BEDROOM + STUDY)

Area 65 sqm
Unit #05-06
#05-07*



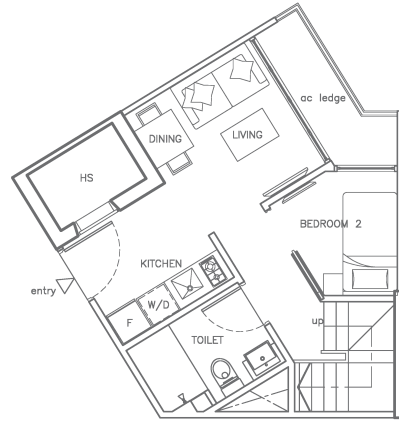
5th storey



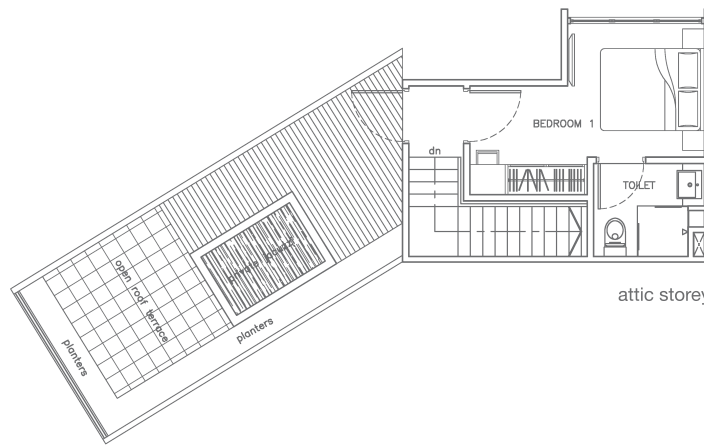
attic storey

TYPE PHM1 (2-BEDROOM)

Area 81 sqm
Unit #05-10



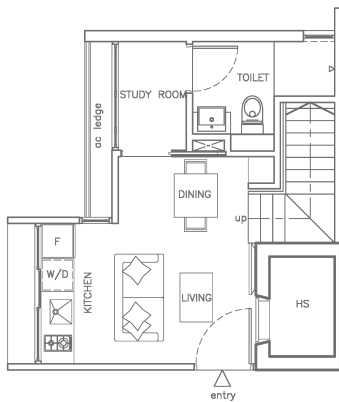
5th storey



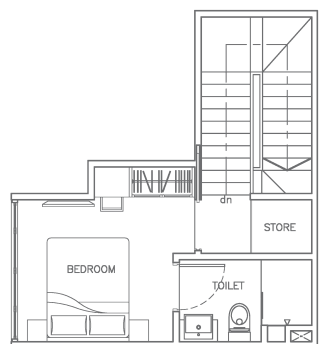
attic storey

TYPE PHQ (1 BEDROOM + STUDY)

Area 59 sqm
Unit #05-05



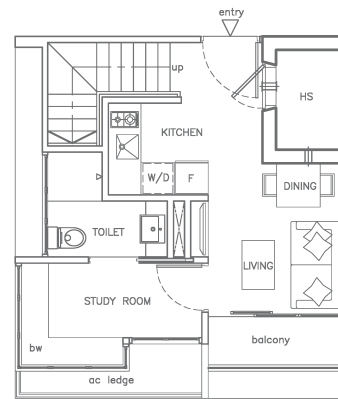
5th storey



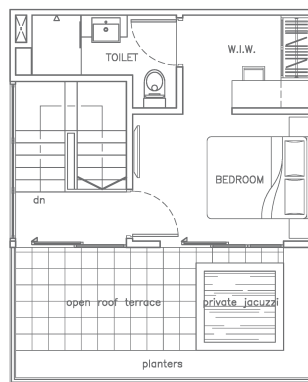
attic storey

TYPE PHR (1 BEDROOM + STUDY)

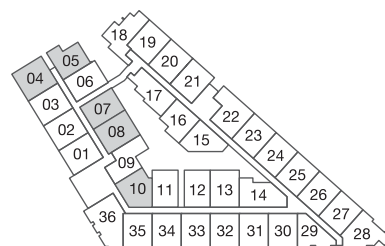
Area 74 sqm
Unit #05-04



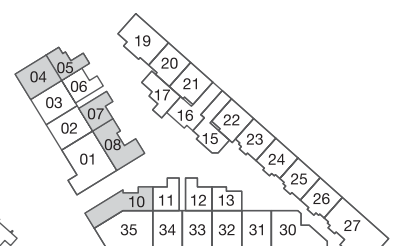
5th storey



attic storey



5TH STOREY PLAN



ATTIC STOREY PLAN

* MIRROR IMAGE UNIT
All plans are subject to amendments as approved by the relevant authorities. Floor areas are approximate measurements and subject to final survey.