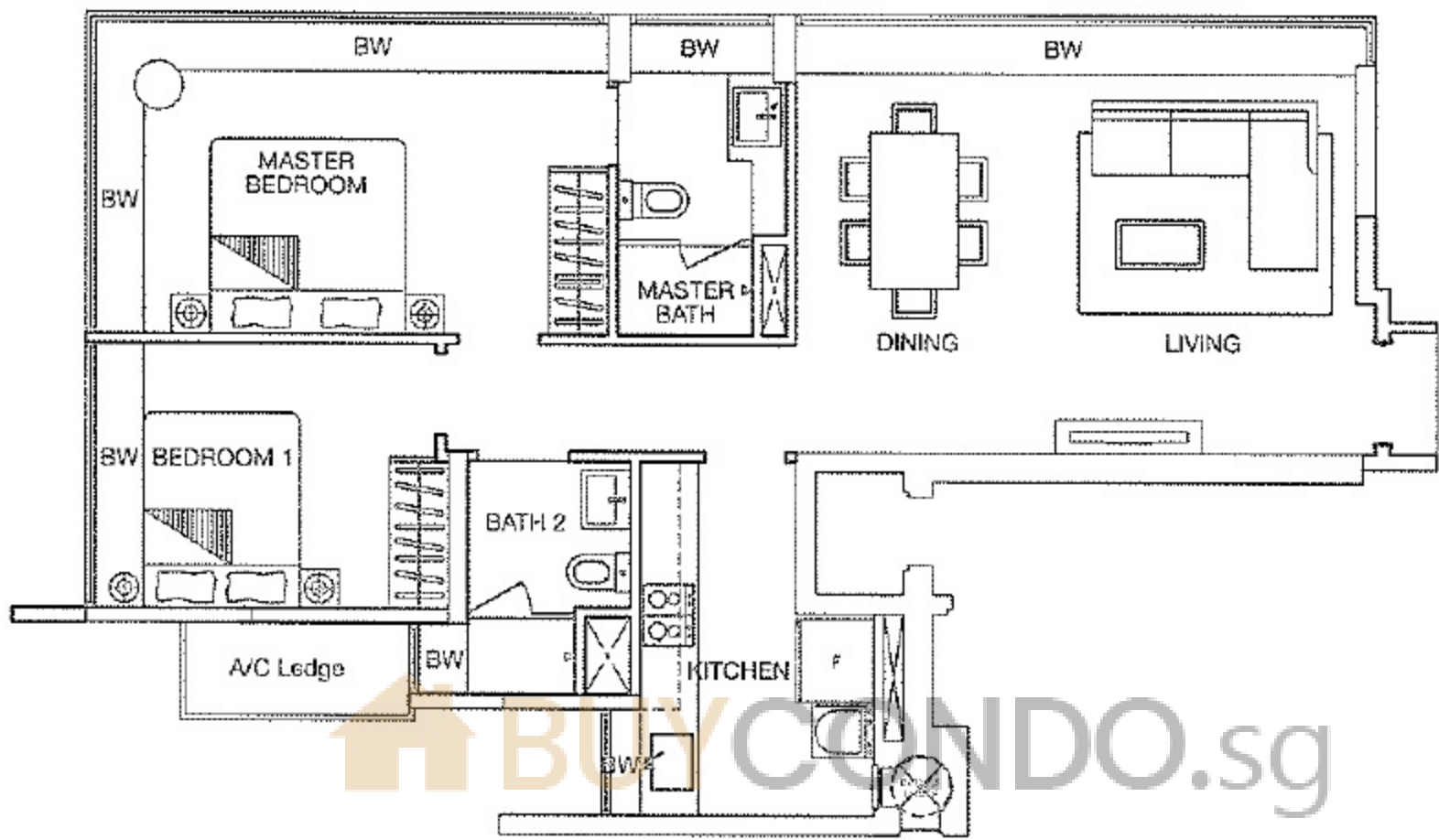


2 Bedroom - TYPE A1

84 sq. m. / 904 sq. ft.

#02-03 to #17-03

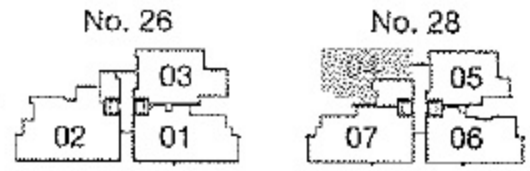




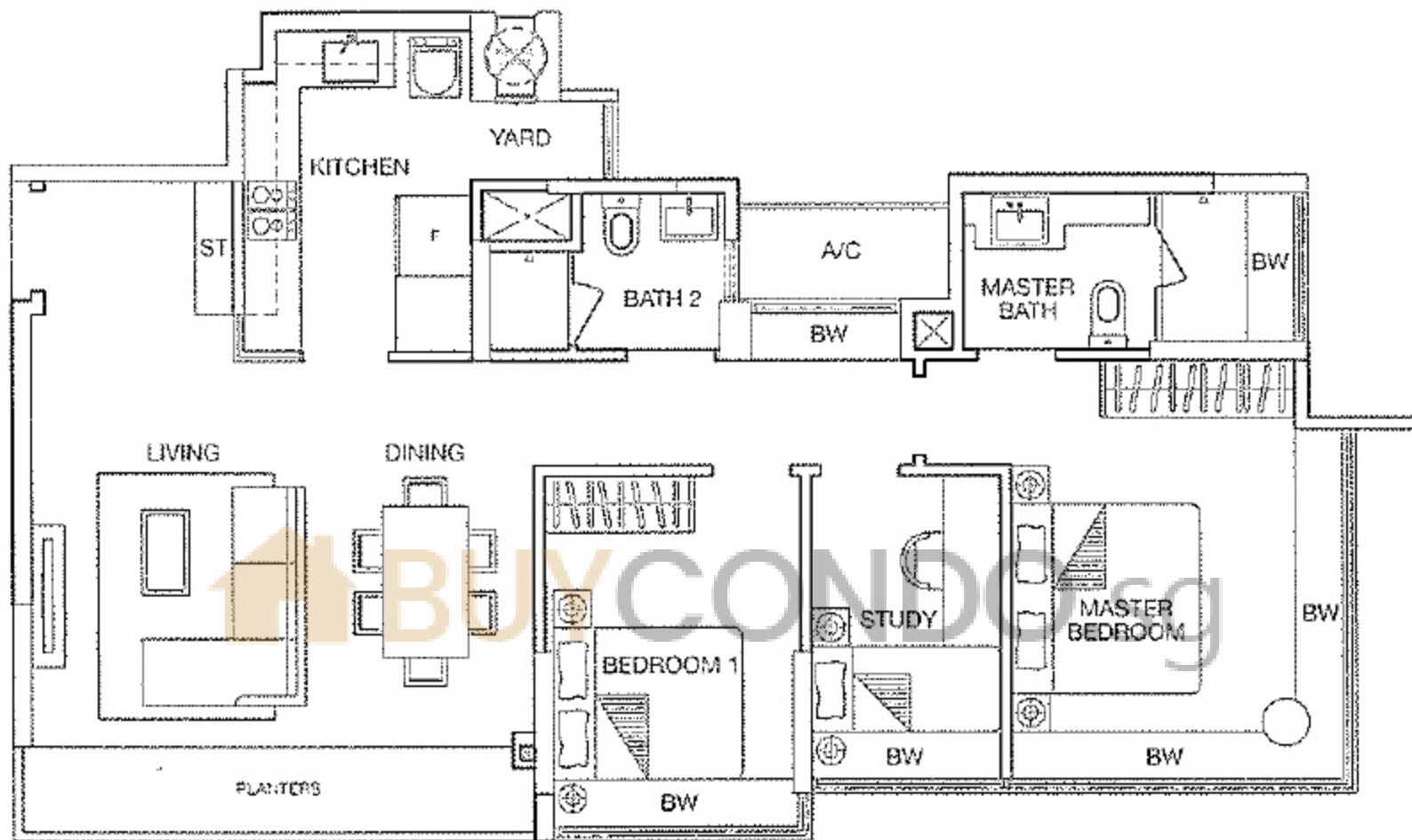
2 Bedroom - TYPE A2

82 sq. m. / 883 sq. ft.

#02-04 to #17-04



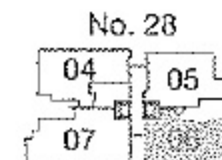
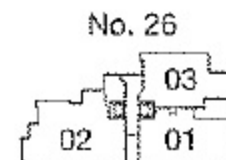
Area includes PES, A/C ledge, bay windows, planter, roof terrace, void and balcony. Orientations and facings will differ depending on the unit you are purchasing. Please refer to the key plan. All plans are not to scale and subject to changes as may be approved by the relevant authorities. All floor areas are approximate measurements only and are subject to government resurvey.

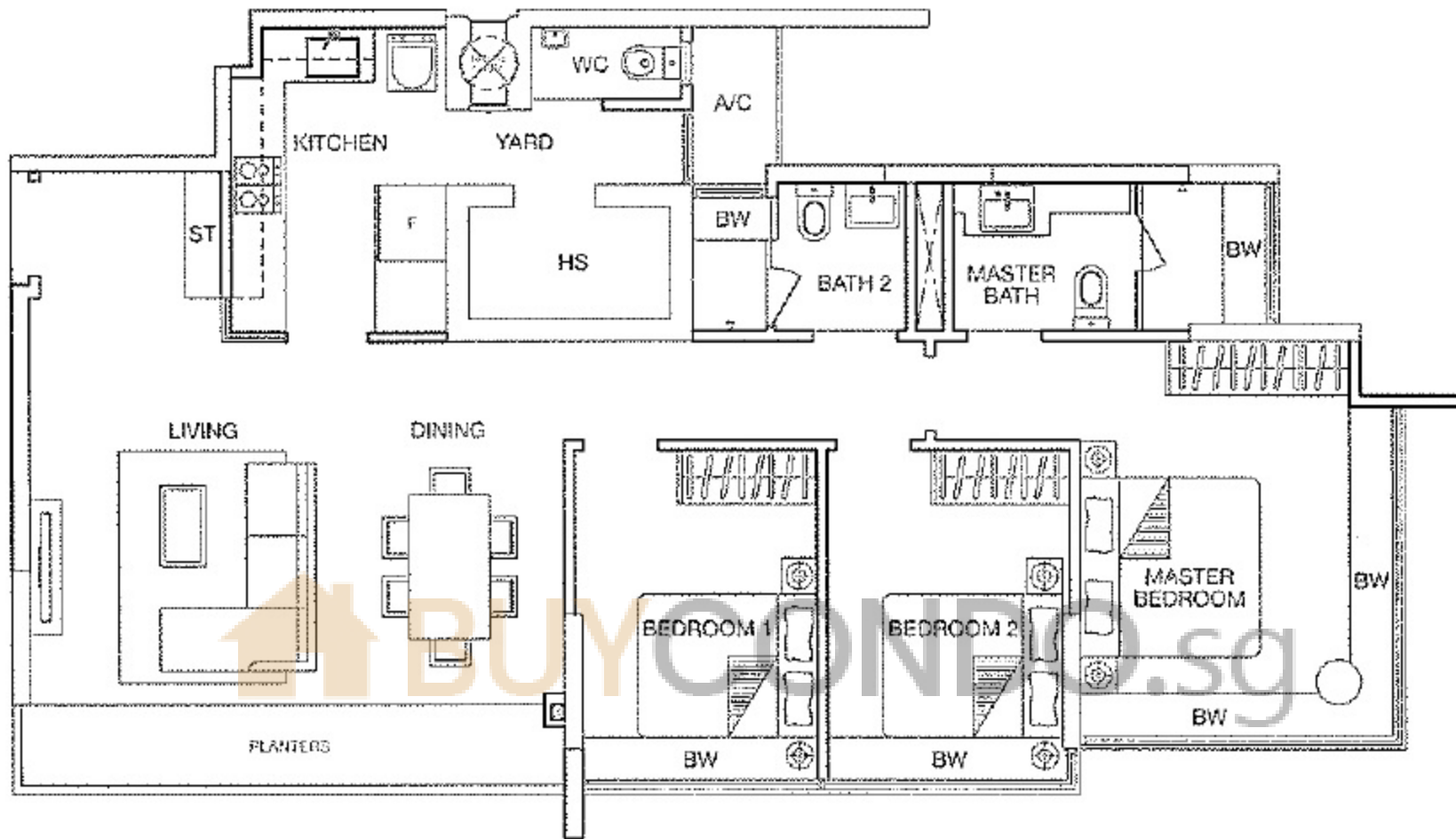


2 Bedroom + Study - TYPE B1

96 sq. m. / 1,033 sq. ft.

#03-06 to #17-06



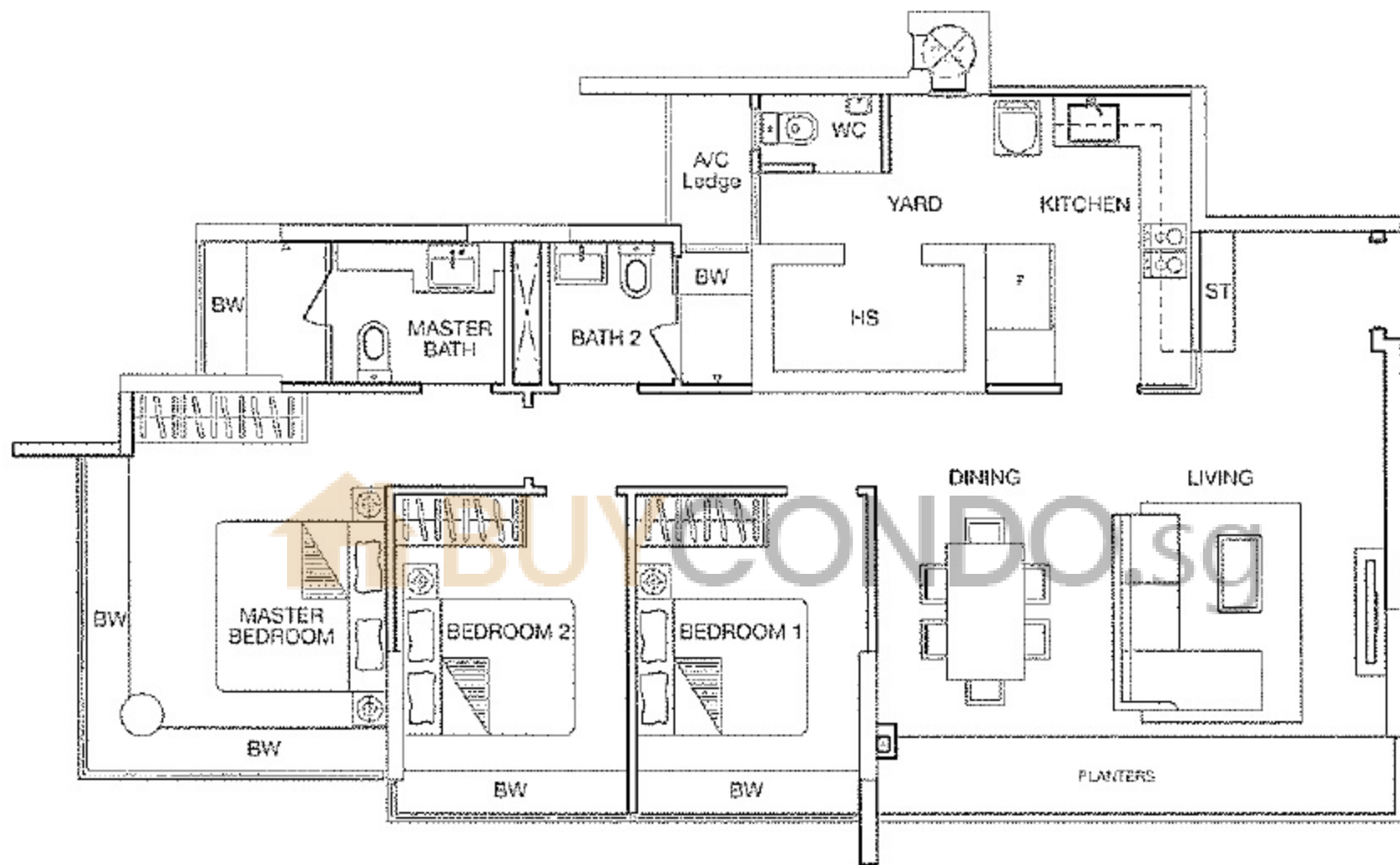


3 Bedroom - TYPE C1

110 sq. m. / 1,184 sq. ft.
 #03-01 to #16-01



Area includes PES, A/C ledge, bay windows, planter, roof terrace, void and balcony. Orientations and facings will differ depending on the unit you are purchasing. Please refer to the key plan. All plans are not to scale and subject to changes as may be approved by the relevant authorities.
 All floor areas are approximate measurements only and are subject to government resurvey



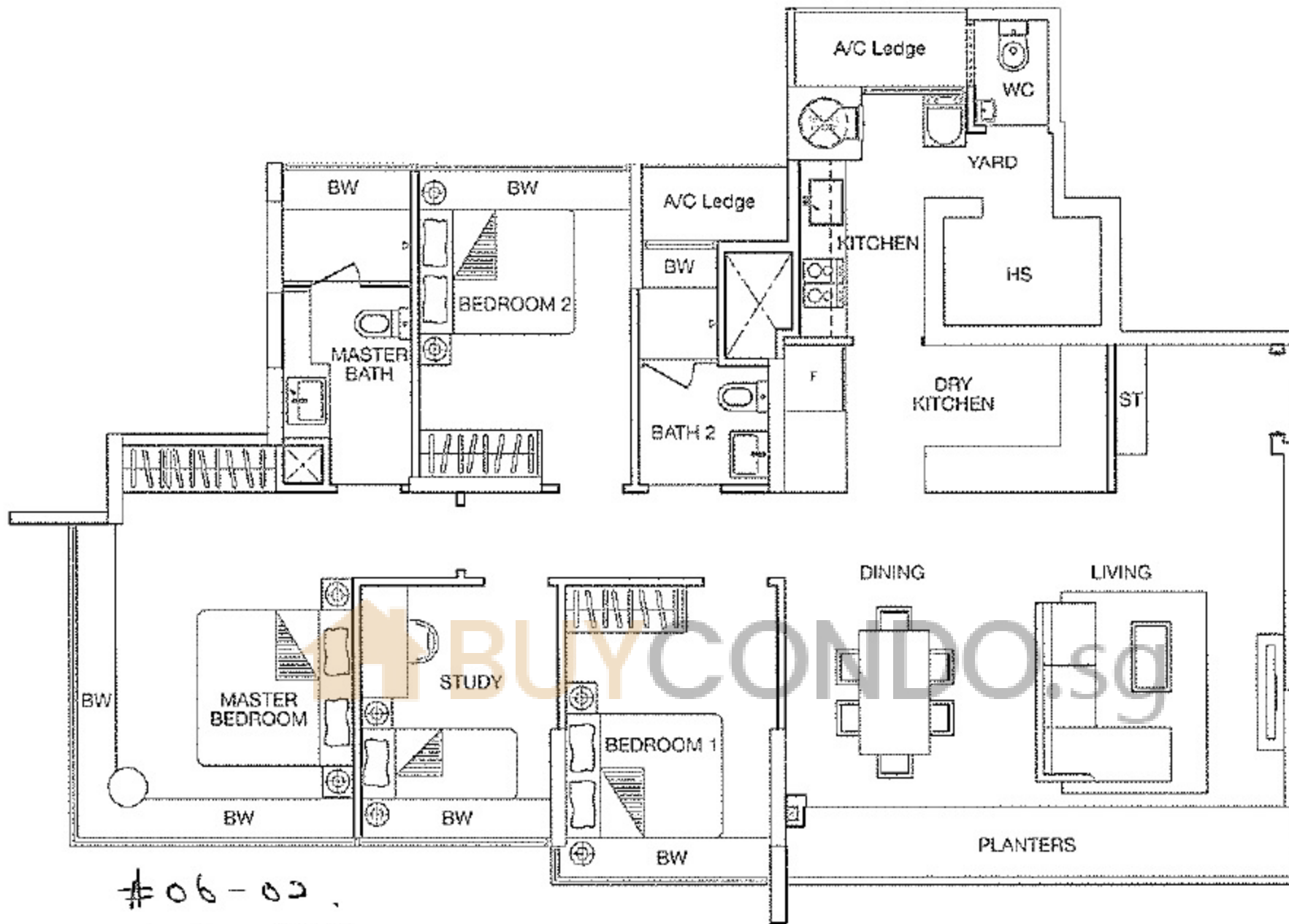
3 Bedroom - TYPE C2

111 sq. m. / 1,195 sq. ft.

#03-07 to #17-07

11-07.





#06-02

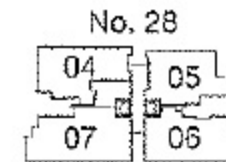
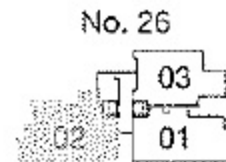
#03-#05

#04

3 Bedroom + Study - TYPE D1

130 sq. m. / 1,399 sq. ft.

#03-02 to #16-02



Area includes PES, A/C ledge, bay windows, planter, roof terrace, void and balcony. Orientations and facings will differ depending on the unit you are purchasing. Please refer to the key plan. All plans are not to scale and subject to changes as may be approved by the relevant authorities. All floor areas are approximate measurements only and are subject to government resurvey.