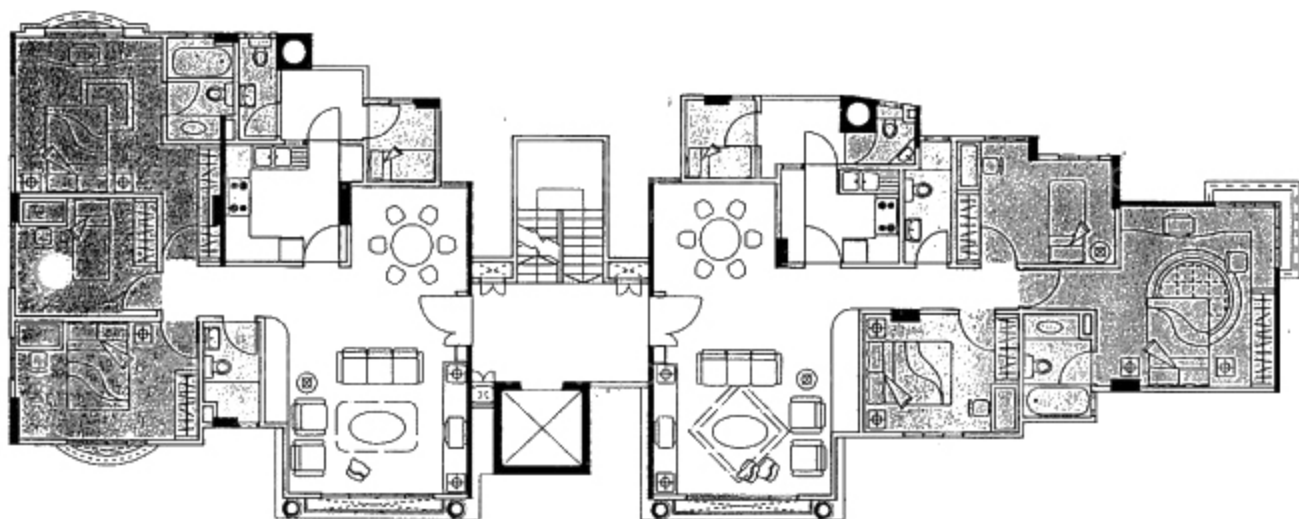


TYPE A FLOOR PLAN

TYPE B FLOOR PLAN



TYPE A - 1ST TO 4TH STOREY

LIVING / DINING	-	38 SQ.M
MASTER BEDROOM	-	20 SQ.M
BEDROOM 2	-	11 SQ.M
BEDROOM 3	-	14 SQ.M
BATH 1	-	5 SQ.M
BATH 2	-	4 SQ.M
W.C.	-	3 SQ.M
KITCHEN	-	10 SQ.M
YARD	-	4 SQ.M
UTILITY	-	4 SQ.M

TOTAL = 113 SQ.M / 1216 SQ.FT

TYPE B - 1ST TO 4TH STOREY

LIVING / DINING	-	40 SQ.M
MASTER BEDROOM	-	22 SQ.M
BEDROOM 2	-	12 SQ.M
BEDROOM 3	-	12 SQ.M
BATH 1	-	5 SQ.M
BATH 2	-	4 SQ.M
W.C.	-	3 SQ.M
KITCHEN	-	7 SQ.M
YARD	-	4 SQ.M
UTILITY	-	4 SQ.M

TOTAL = 113 SQ.M / 1216 SQ.FT