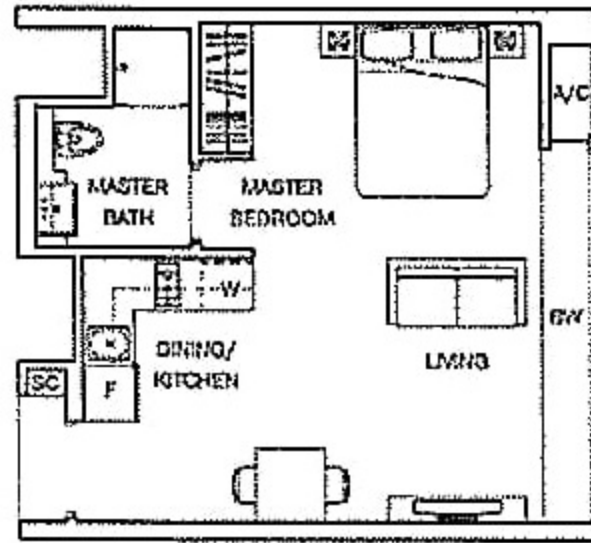


1-BEDROOM

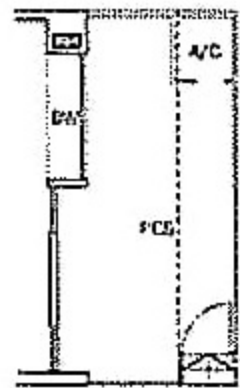
TYPE A1

37 sqm / 398 sqft
 #02-10 to #14-10
 #02-13 to #14-13



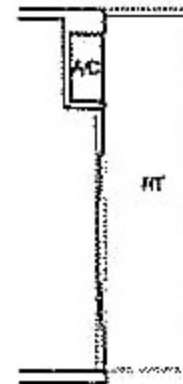
TYPE A1P

52 sqm / 560 sqft
 #01-10 and #01-13

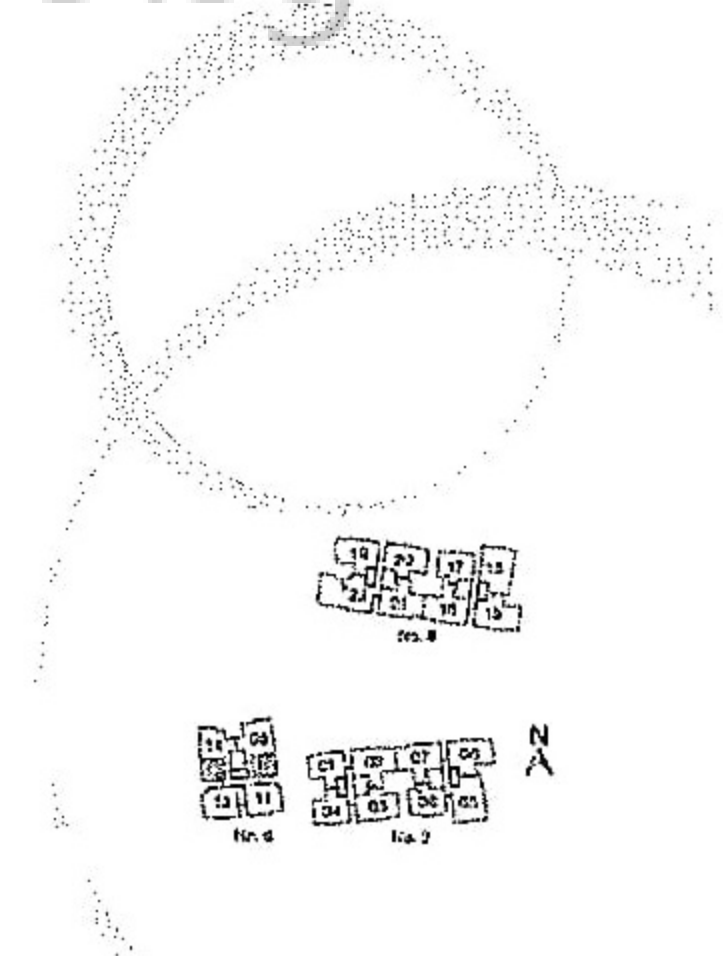


TYPE A1T

46 sqm / 495 sqft
 #15-10 and #15-13



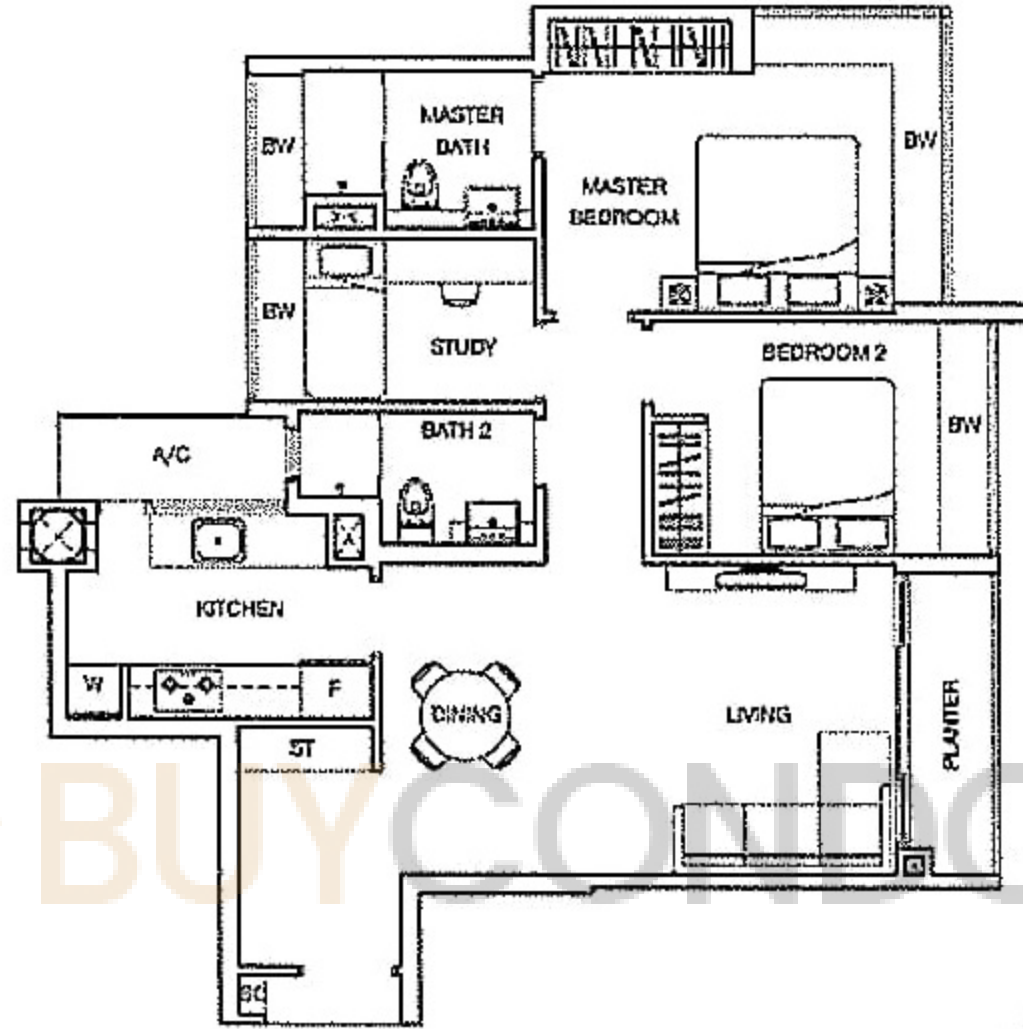
GATE ENTRY & STEPS TO PEB
 FOR #01-13 ONLY



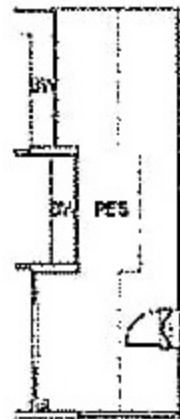
Dimensions are provided for all units in the building.
 Area for water P.E.S., A/C ducts, lift shafts, and other services. Floor area and other features of the apartment shall refer to the structure. Please refer to the layout plan for production.
 All parts are not shown to scale and are subject to change. All measurements are subject to the actual survey and are subject to government authority.

2-BEDROOM + STUDY

TYPE B5
88 sqm / 947 sqft
#02-09 to #14-09



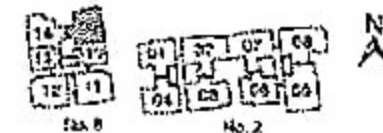
TYPE B5P
114 sqm / 1227 sqft
#01-09



TYPE B5T
104 sqm / 1119 sqft
#15-09



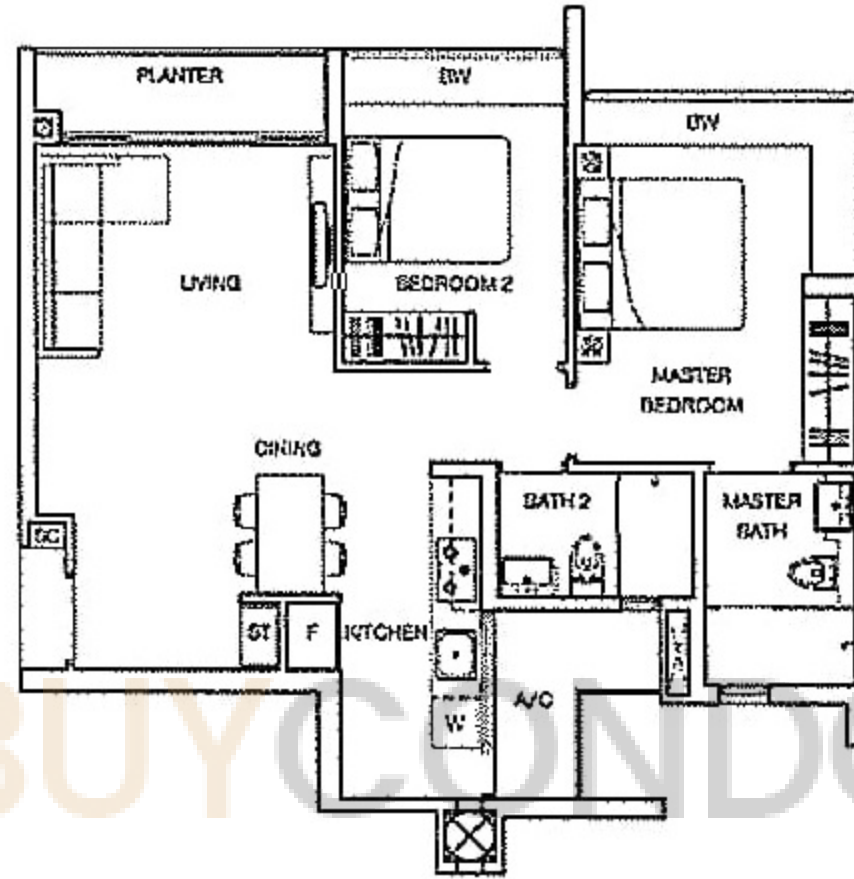
Area includes PES, A/C, edge, dry and/or plain and roof terrace. Do not use as other in type of the area here. Each shown in the structure. Please refer to the key plan for reference. All floor area and dimensions are subject to change without notice. All floor area and dimensions are subject to government survey.



2-BEDROOM

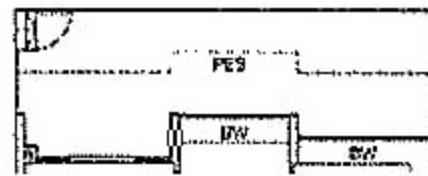
TYPE B1

78 sqm / 840 sqft
 #02-08 to #14-08
 #02-17 to #14-17



TYPE B1P

104 sqm / 1118 sqft
 #01-08 and #01-17

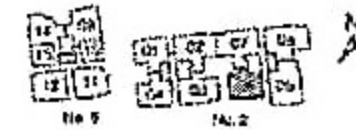


TYPE B1T

93 sqm / 1001 sqft
 #15-06 and #15-17

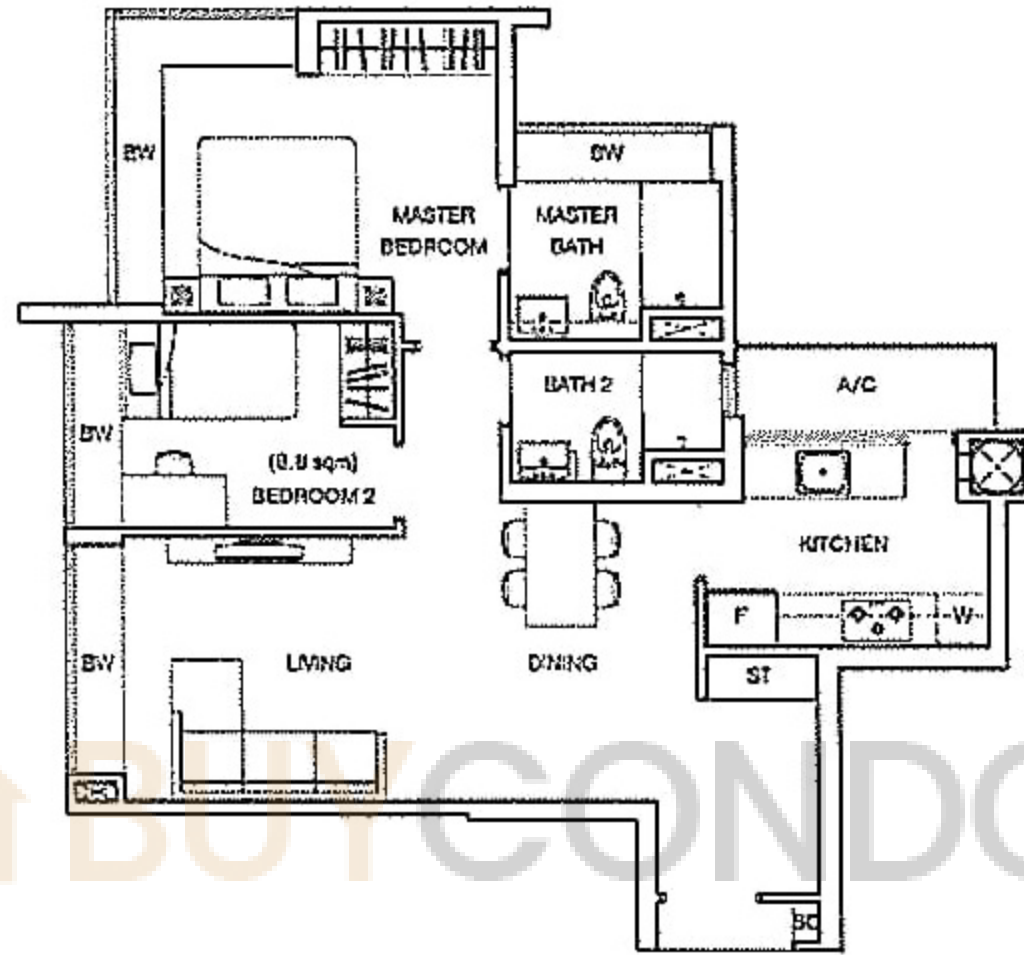


Area includes PES, A/C logs, bay window, kitchen and roof terrace. Some with the frame images of the apartment plans shown in the brochure. Please refer to the key plan for 24-hour. All area and floor to scale and are subject to change as may be approved by the relevant authorities. All floor plans are approximate and are not to be used as a basis for any legal proceedings.



2-BEDROOM

TYPE B2
77 sqm / 829 sqft
#02-14 to #14-14



TYPE B2P
96 sqm / 1033 sqft
#01-14



TYPE B2T
92 sqm / 990 sqft
#15-14

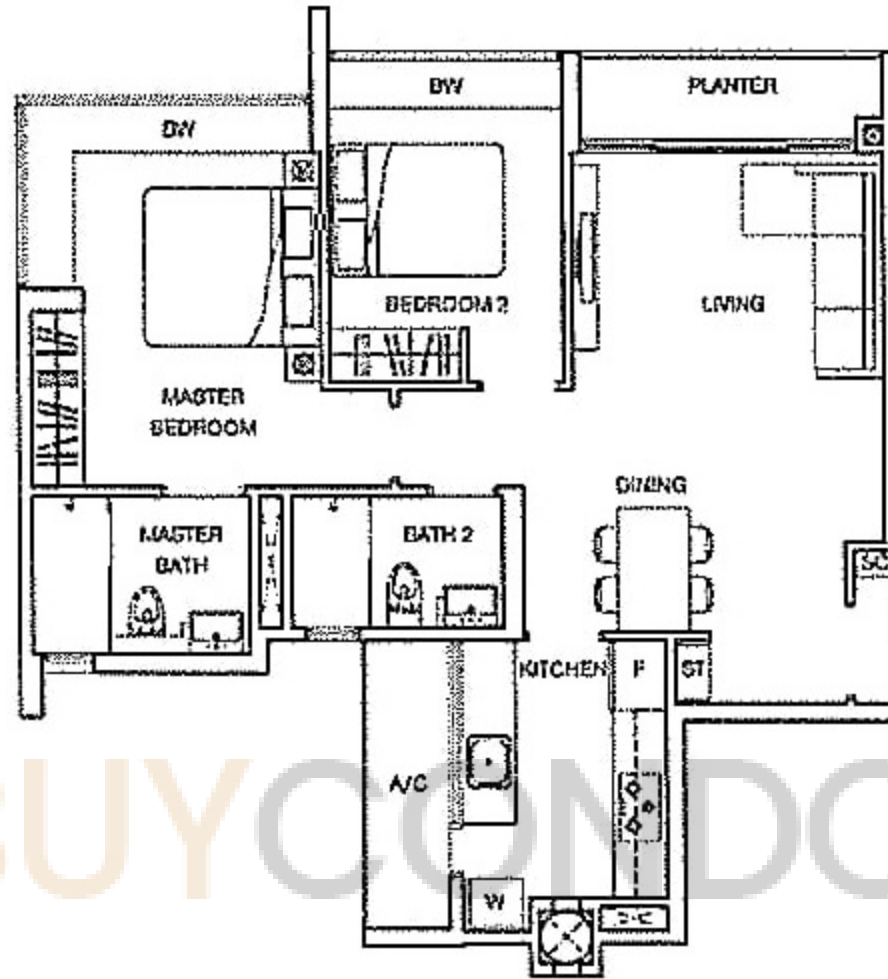


Area includes P&G, A/C units, bay window glass and door frame. Some unit layouts may vary. All dimensions are approximate. Measurements are subject to government survey. All plans are for information only and are subject to change without notice. All floor areas are approximate measurements only and are subject to government survey.

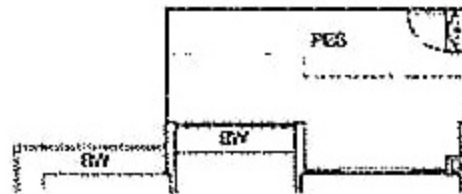


2-BEDROOM

TYPE B3
 78 sqm / 840 sqft
 #02-01 to #14-01
 #02-04 to #14-04



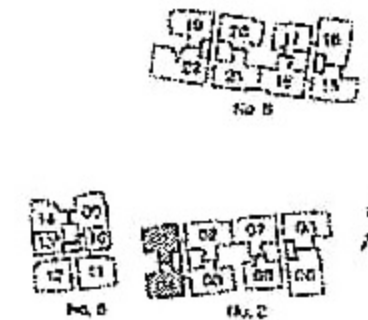
TYPE B3P
 94 sqm / 1012 sqft
 #01-01 and #01-04




TYPE B3T
 94 sqm / 1012 sqft
 #15-01 and #15-04

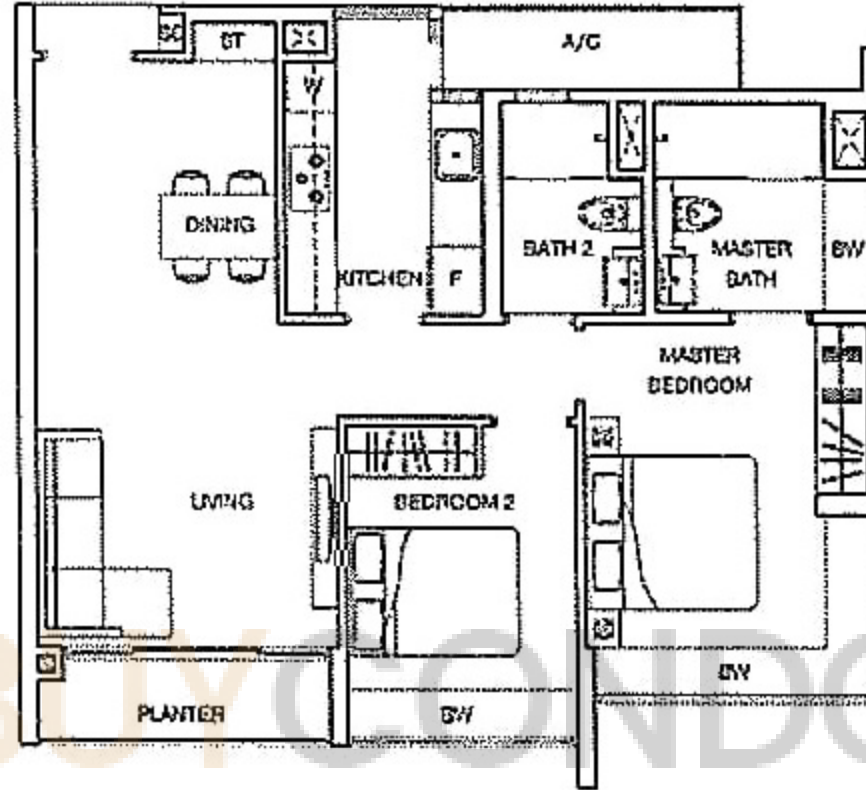


Area includes F&S, A/C, D/W, D, W, W.I.H, planter and roof terrace. Does not include any other furniture or fixtures. All dimensions are approximate and subject to change without notice. All dimensions are approximate and subject to change without notice. All dimensions are approximate and subject to change without notice.

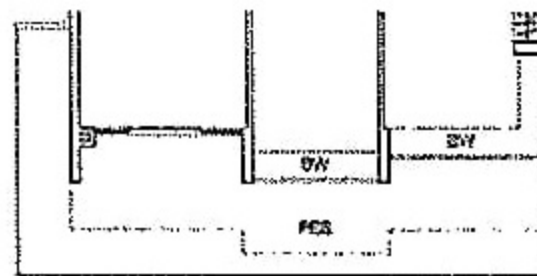


 2-BEDROOM

TYPE B4
 80 sqm / 861 sqft
 #02-11 to #14-11
 #02-12 to #14-12



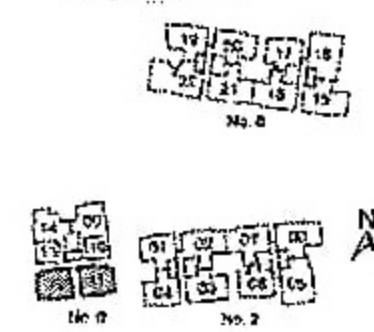
TYPE B4P
 108 sqm / 1163 sqft
 #01-11 and #01-12



TYPE B4T
 88 sqm / 1033 sqft
 #15-11 and #15-12



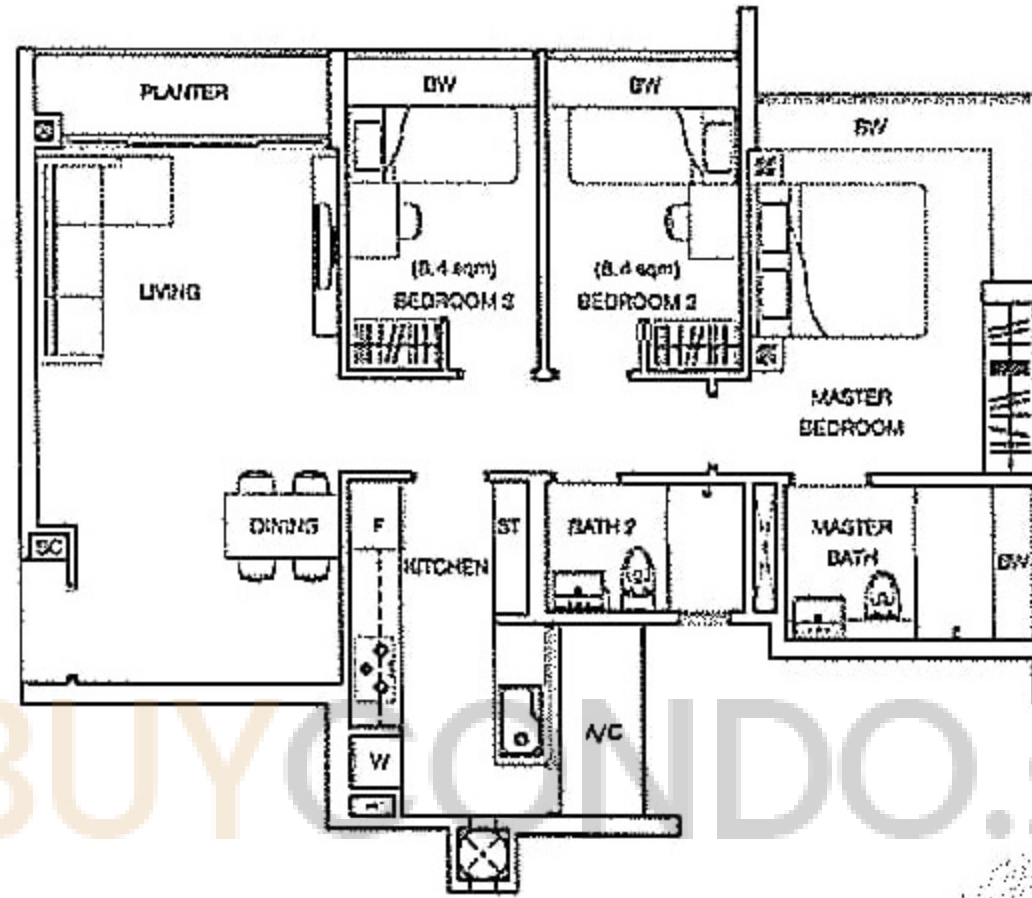
Dimensions are provided for information only. Actual dimensions may vary. All dimensions are taken from the center of the apartment slab shown in the floor plan. Please refer to the floor plan for orientation. All dimensions are in meters and are subject to change. It may be approved to be revised at any time. All dimensions are subject to the actual construction and the surveyor's report.



3-BEDROOM

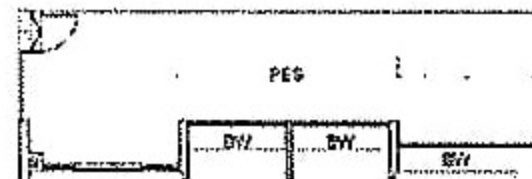
TYPE C1

89 sqm / 958 sqft
 #02-03 to #14-03
 #02-20 to #14-20



TYPE C1P

120 sqm / 1292 sqft
 #01-03 and #01-20

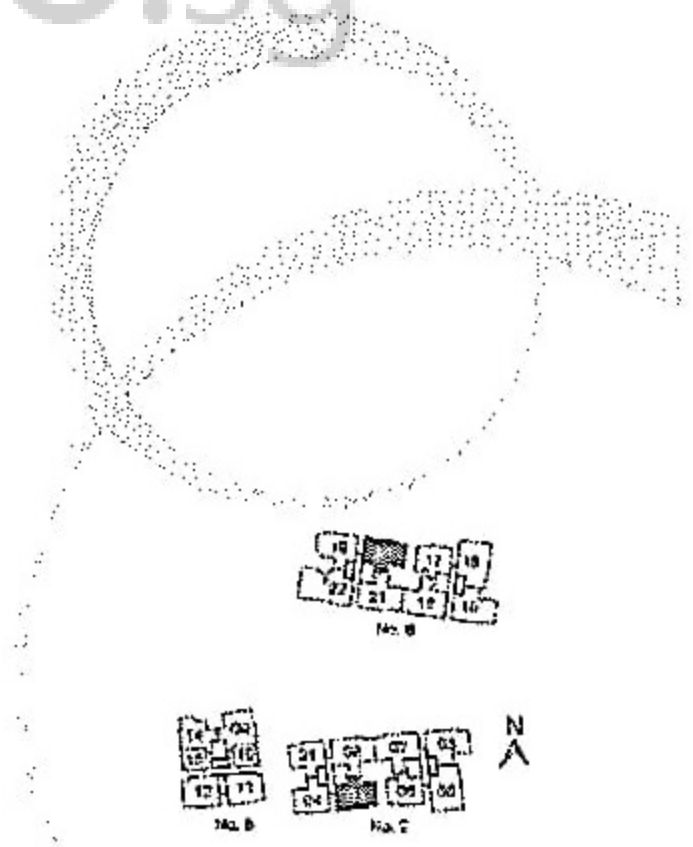
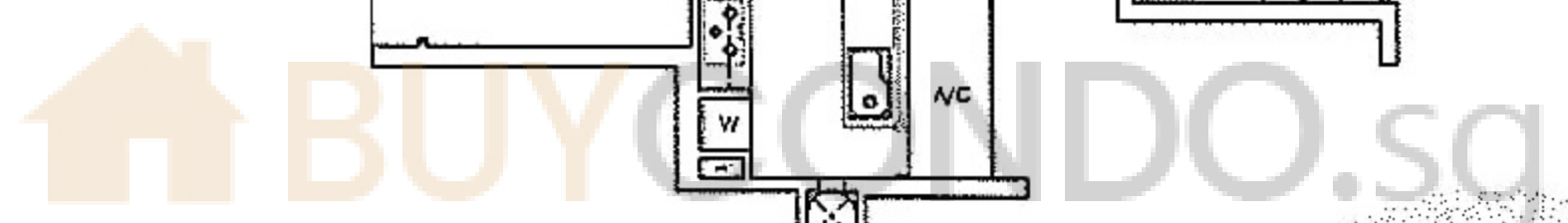


TYPE C1T

108 sqm / 1163 sqft
 #15-03 and #15-20



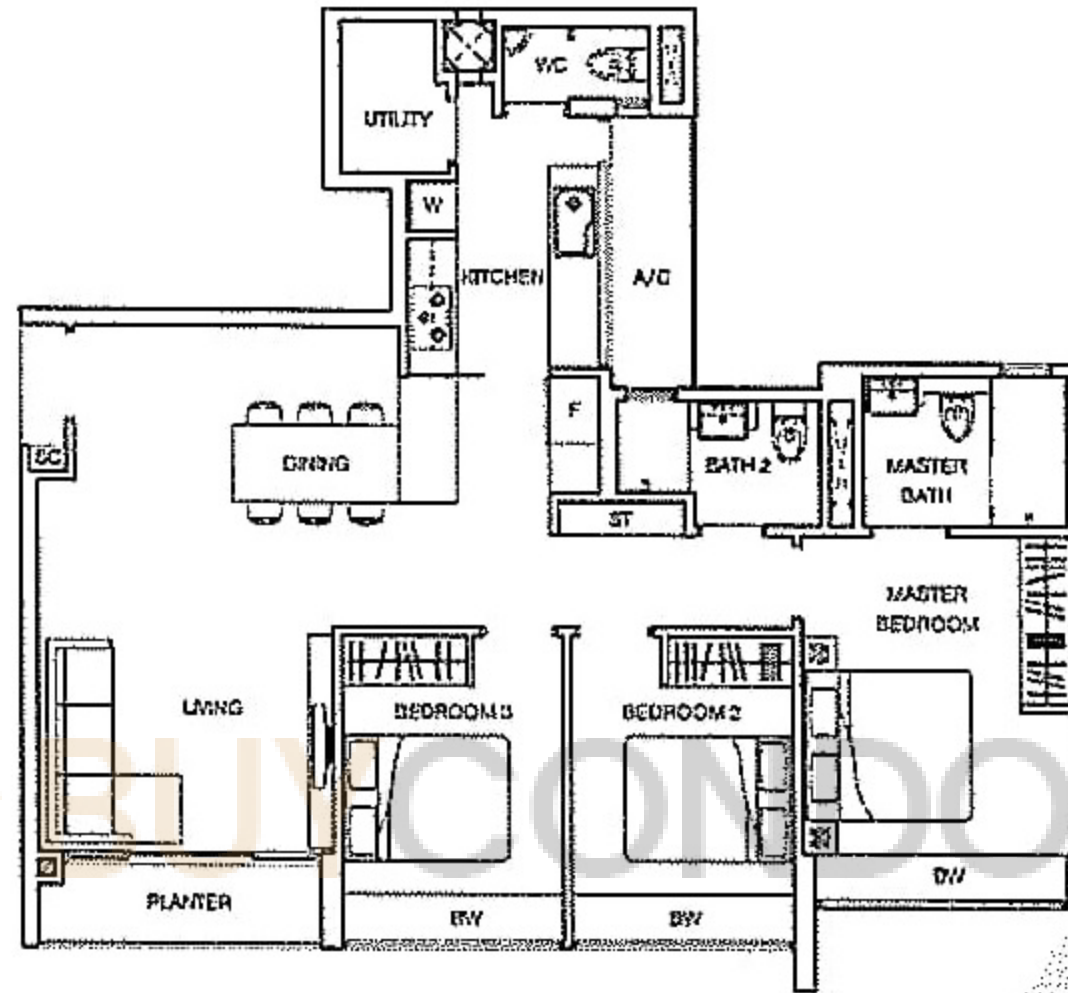
This floor plan is for information only and does not constitute an offer. All dimensions and measurements are approximate and subject to change without notice. All floor areas are approximate and subject to government survey.



3-BEDROOM + UTILITY

TYPE C3

102 sqm / 1098 sqft
 #02-02 to #14-02
 #02-07 to #14-07
 #02-16 to #14-16
 #02-21 to #14-21



TYPE C3P

136 sqm / 1453 sqft
 #01-02, #01-07,
 #01-16 and #01-21



TYPE C3T

122 sqm / 1313 sqft
 #15-02, #15-07,
 #15-16 and #15-21



All dimensions are approximate and subject to change without notice. All dimensions are in millimeters. All dimensions are subject to government regulations.

