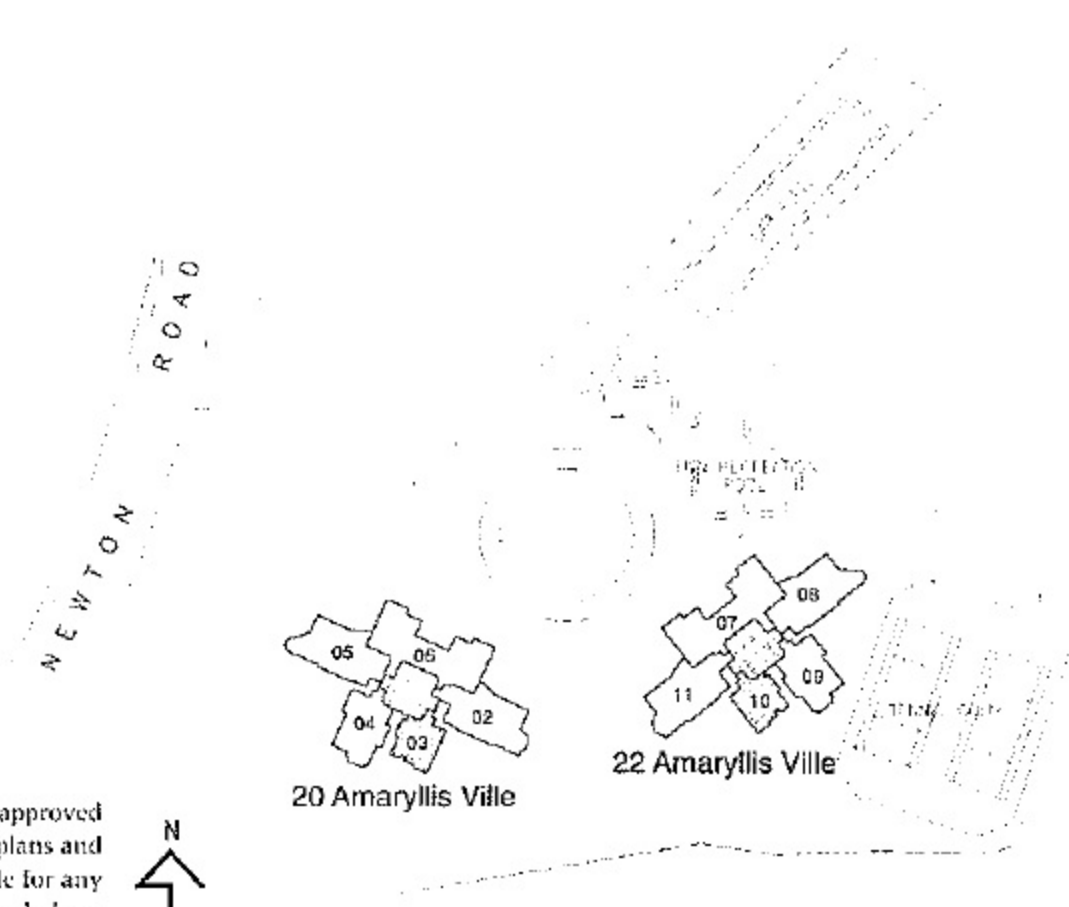
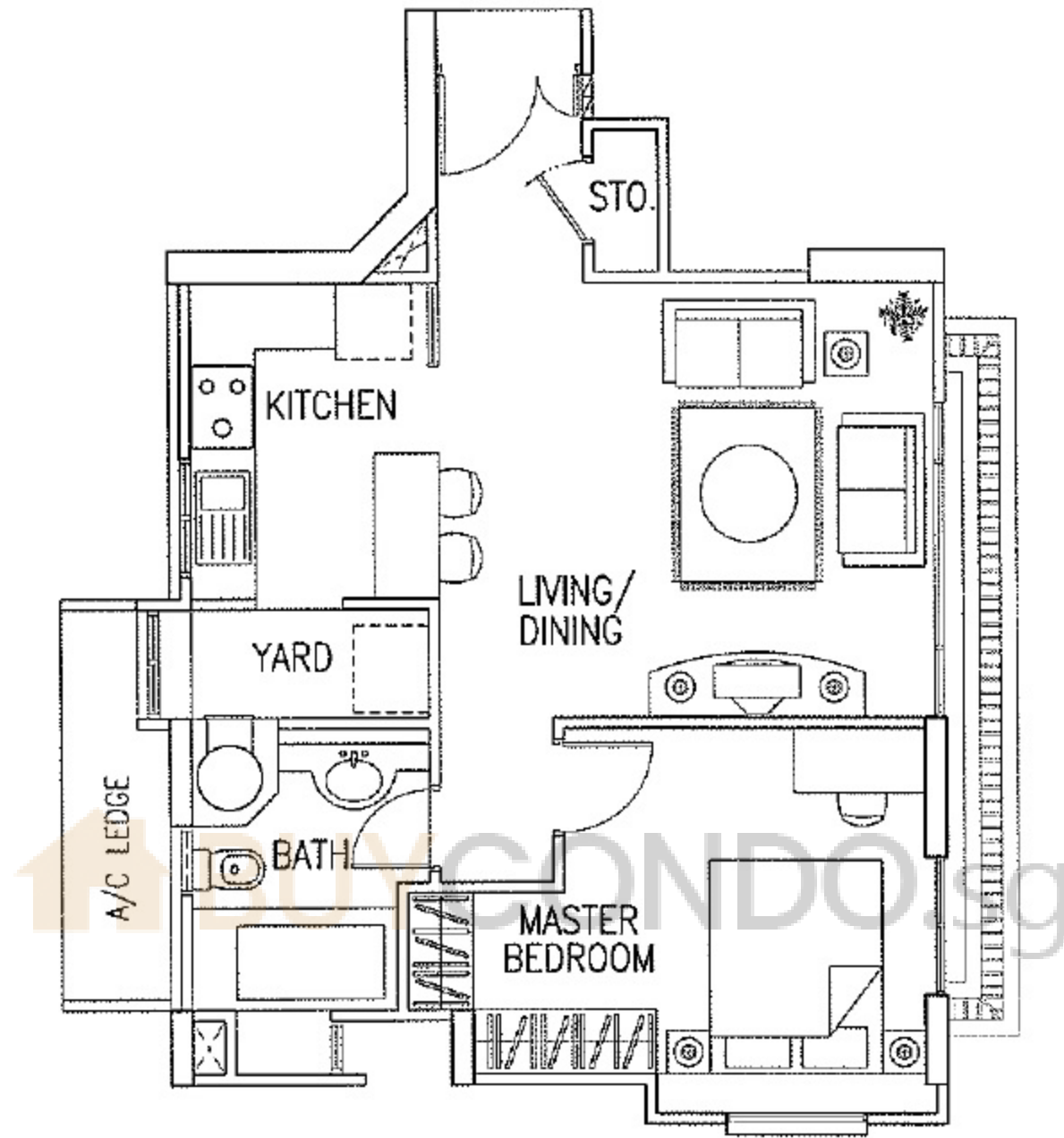


Typical Plan A 657 sq ft

Guide to major areas of typical plan	Approx sq ft
Living/Dining	246
Master Bedroom	141
Kitchen/Yard	96

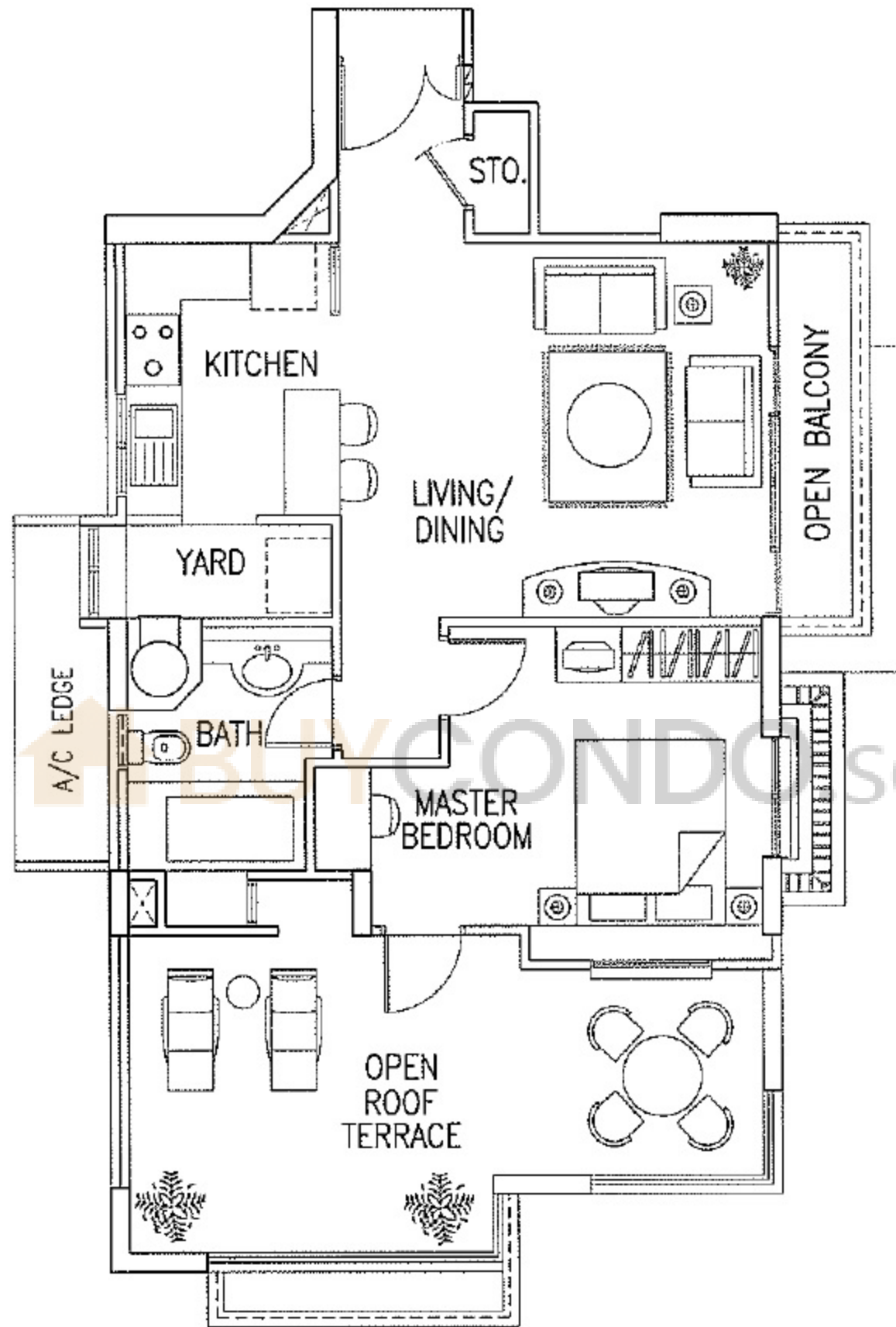


The above plans are not to scale and subject to any amendments as may be approved by the relevant authorities. All apartment areas are approximate of typical plans and are subject to final survey. The developer and its agents cannot be held liable for any inaccuracies. For units on the 16th floor and above, please see further proposed plans.

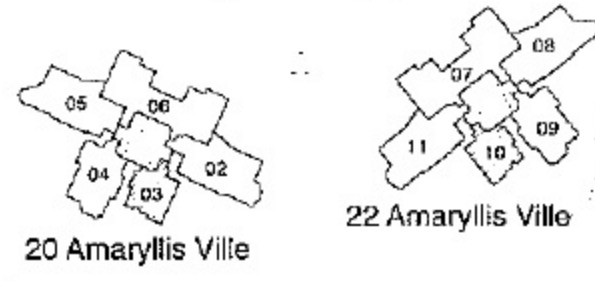


Typical Plan A(r) 936 sq ft

Guide to major areas of typical plan	Approx sq ft
Living/Dining	246
Master Bedroom	141
Kitchen/Yard	96
Open Roof Terrace	219
Open Balcony	33



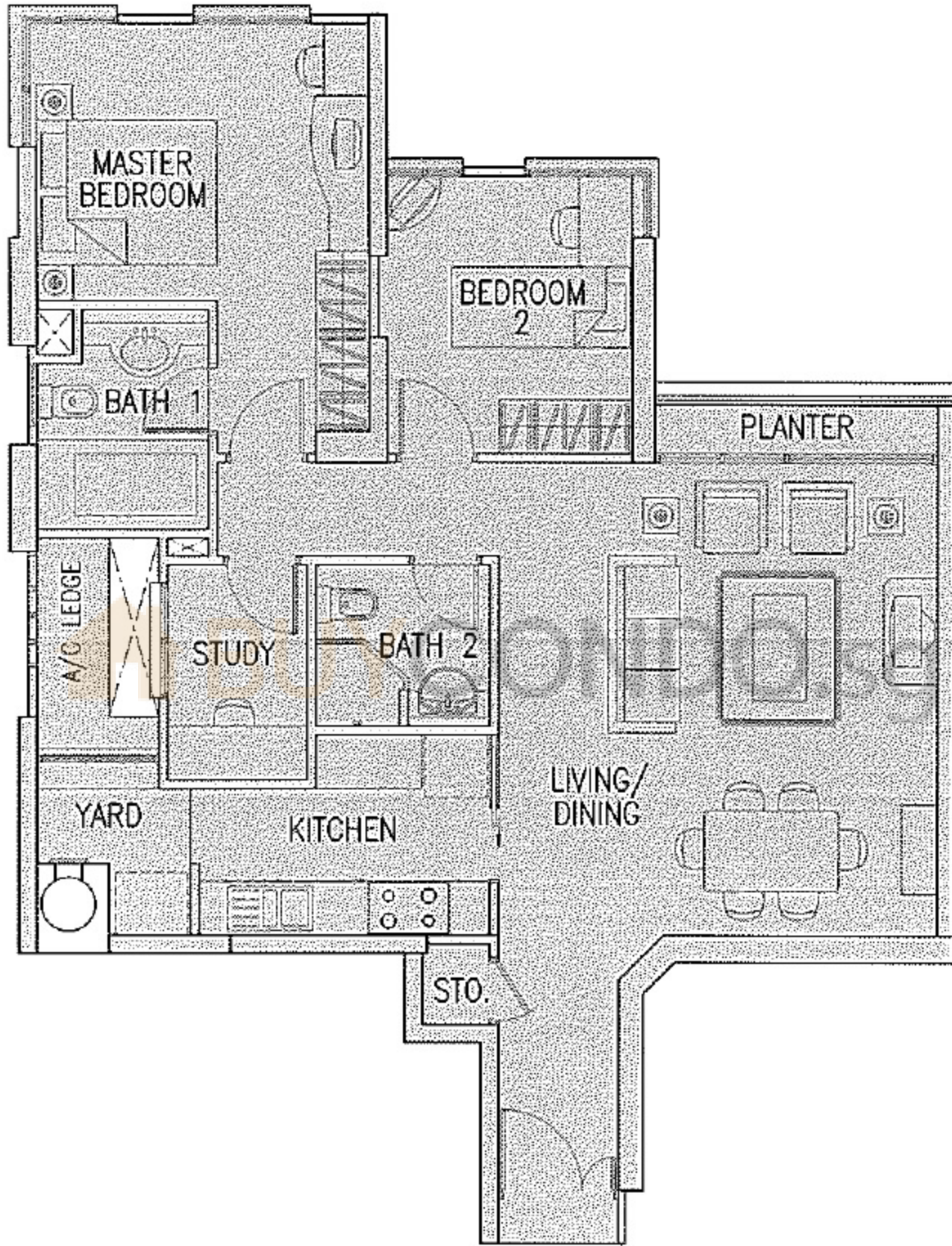
NEWTON ROAD



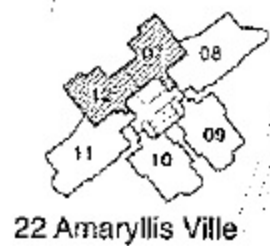
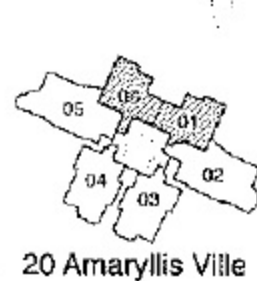
The above plans are not to scale and subject to any amendments as may be approved by the relevant authorities. All apartment areas are approximate of typical plans and are subject to final survey. The developer and its agents cannot be held liable for any inaccuracies. For units on the 16th floor and above, please see further proposed plans.

Typical Plan B1 980 sq ft

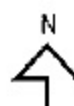
Guide to major areas of typical plan	Approx sq ft
Living/Dining	362
Master Bedroom	154
Bedroom 2	94
Study	41
Kitchen/Yard	95



NEWTON ROAD

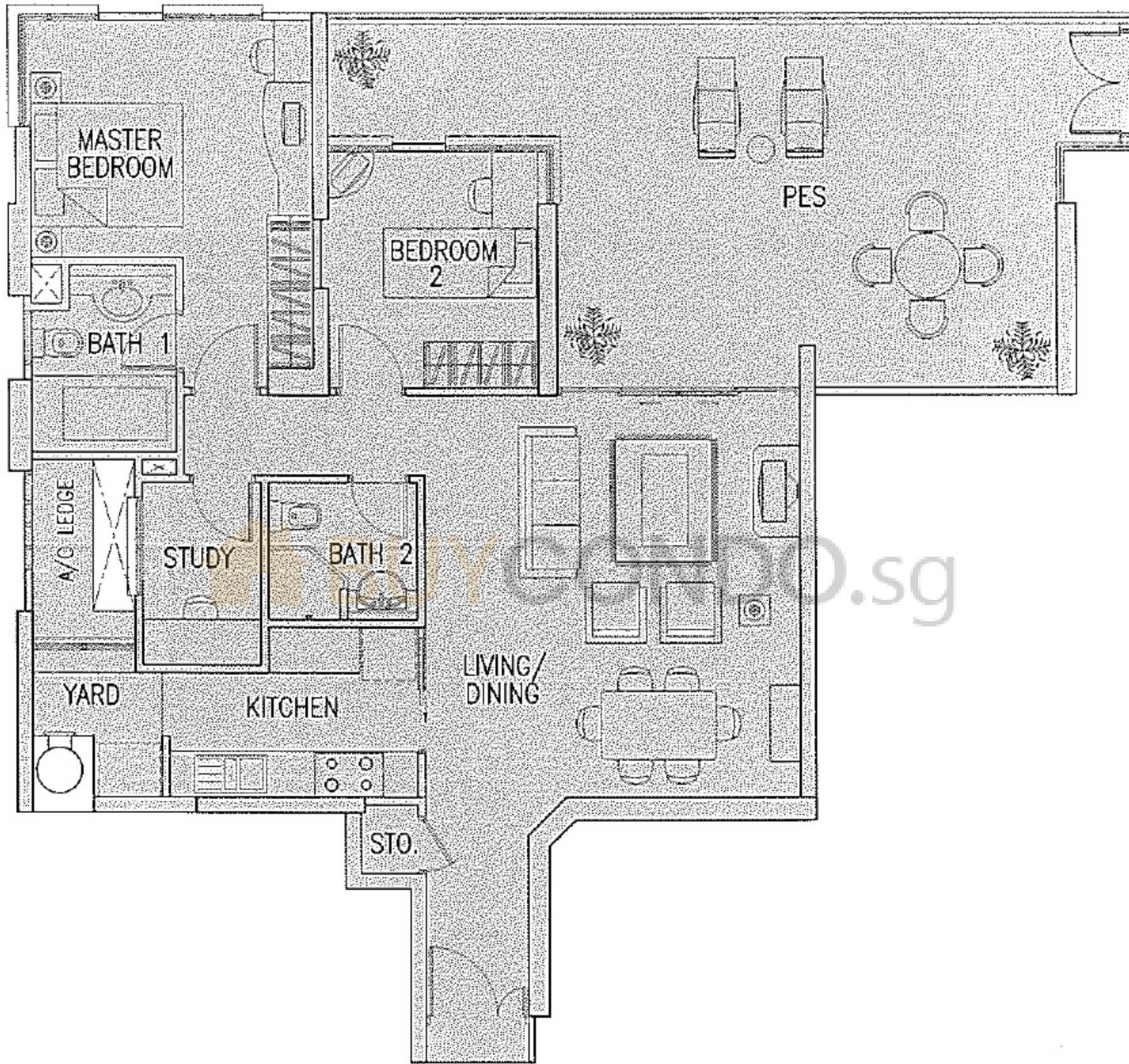


The above plans are not to scale and subject to any amendments as may be approved by the relevant authorities. All apartment areas are approximate of typical plans and are subject to final survey. The developer and its agents cannot be held liable for any inaccuracies.

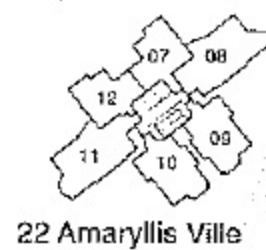


Typical Plan B1 (p) 1,378 sq ft

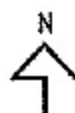
Guide to major area	Approx sq ft
Living/Dining	363
Master Bedroom	154
Bedroom 2	94
Study	41
Kitchen/Yard	95
PES	396



NEWTON ROAD

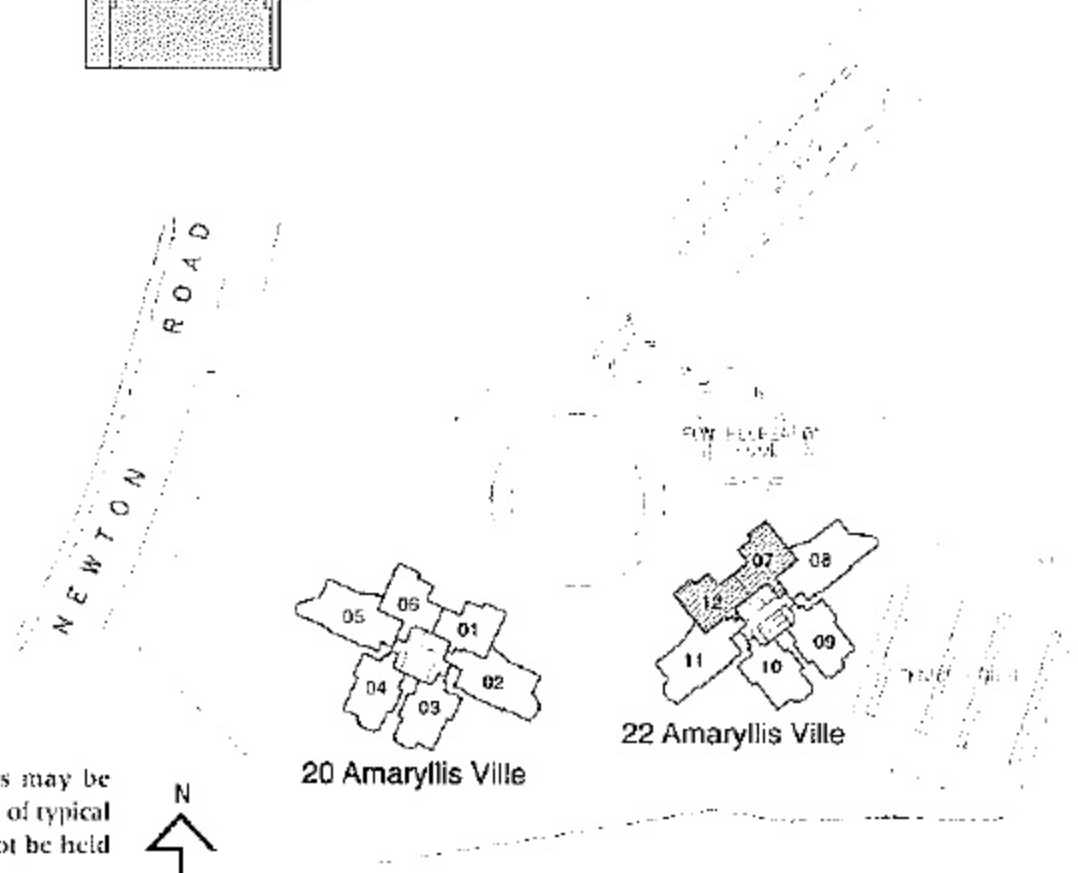
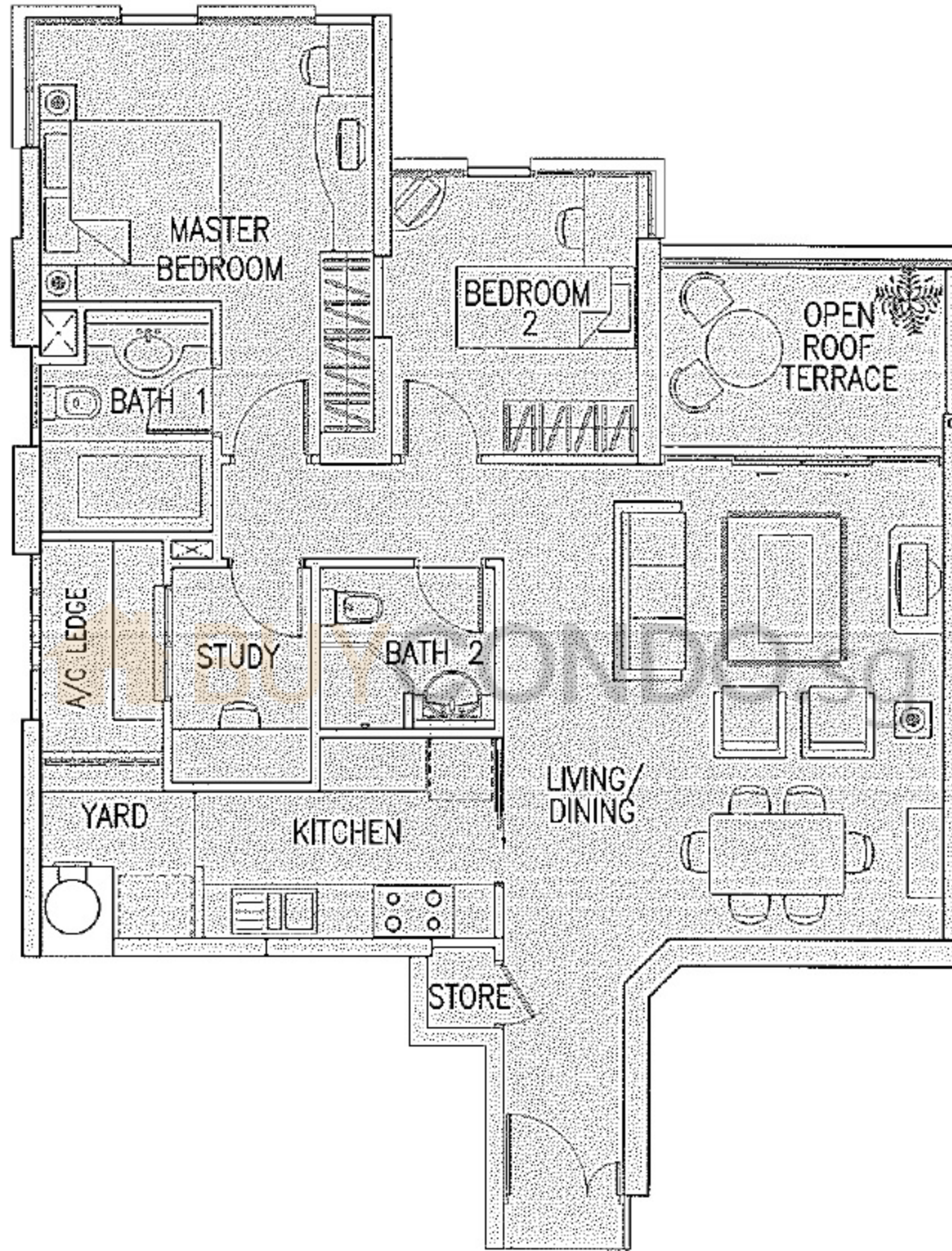


The above plans are not to scale and subject to any amendments as may be approved by the relevant authorities. All apartment areas are approximate of typical plans and are subject to final survey. The developer and its agents cannot be held liable for any inaccuracies.



Typical Plan B1(r) 1,033 sq ft

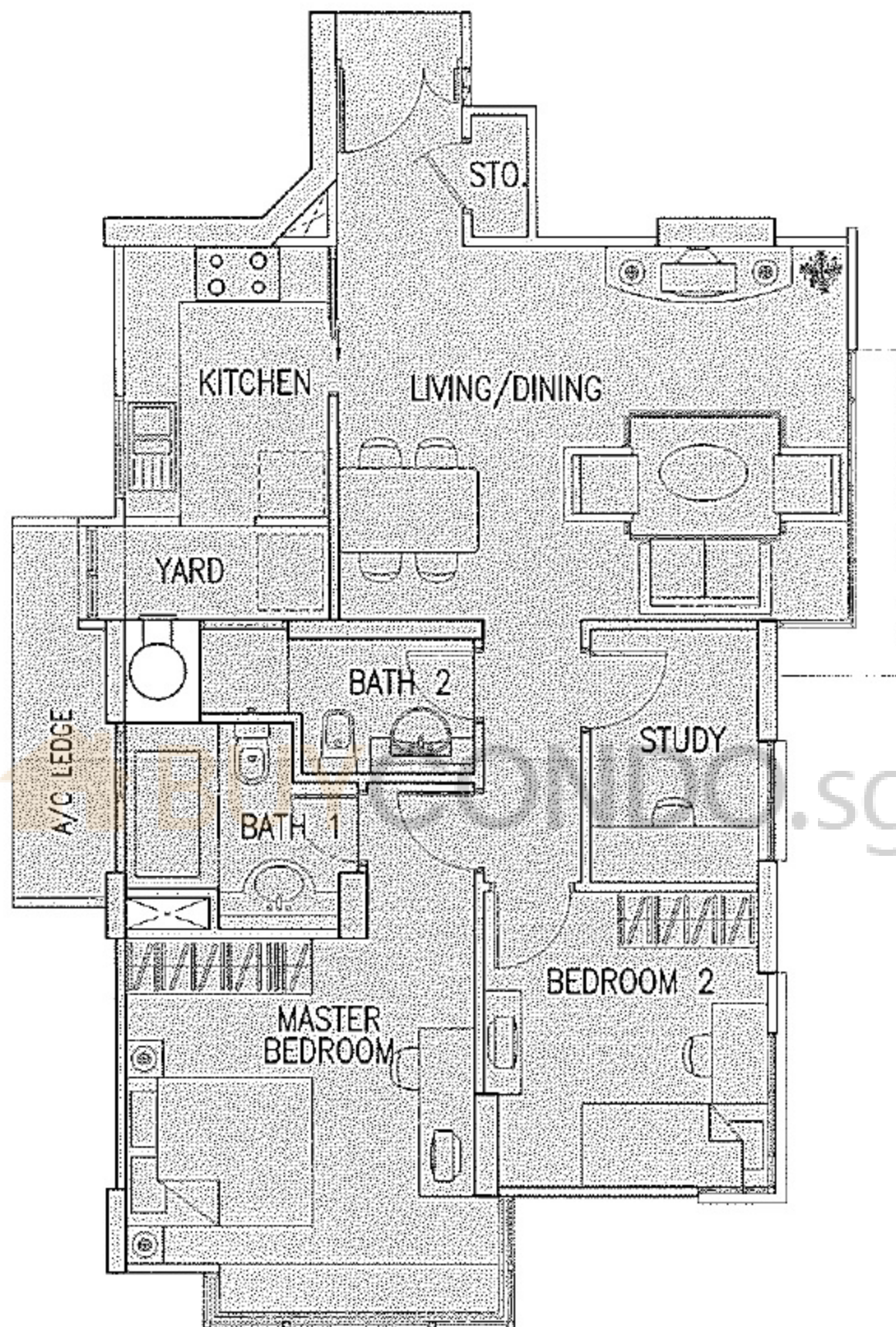
Guide to major areas of typical plan	Approx sq ft
Living/Dining	363
Master Bedroom	154
Bedroom 2	94
Study	41
Kitchen/Yard	95
Open Roof Terrace	72



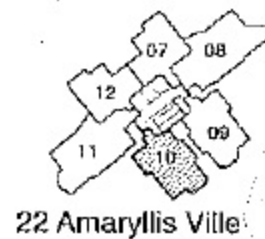
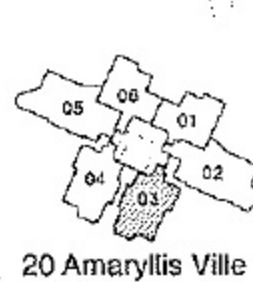
The above plans are not to scale and subject to any amendments as may be approved by the relevant authorities. All apartment areas are approximate of typical plans and are subject to final survey. The developer and its agents cannot be held liable for any inaccuracies.

Typical Plan B2 958 sq ft

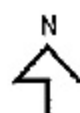
Guide to major areas of typical plan	Approx sq ft
Living/Dining	299
Master Bedroom	165
Bedroom 2	102
Study	55
Kitchen/Yard	95



NEWTON ROAD



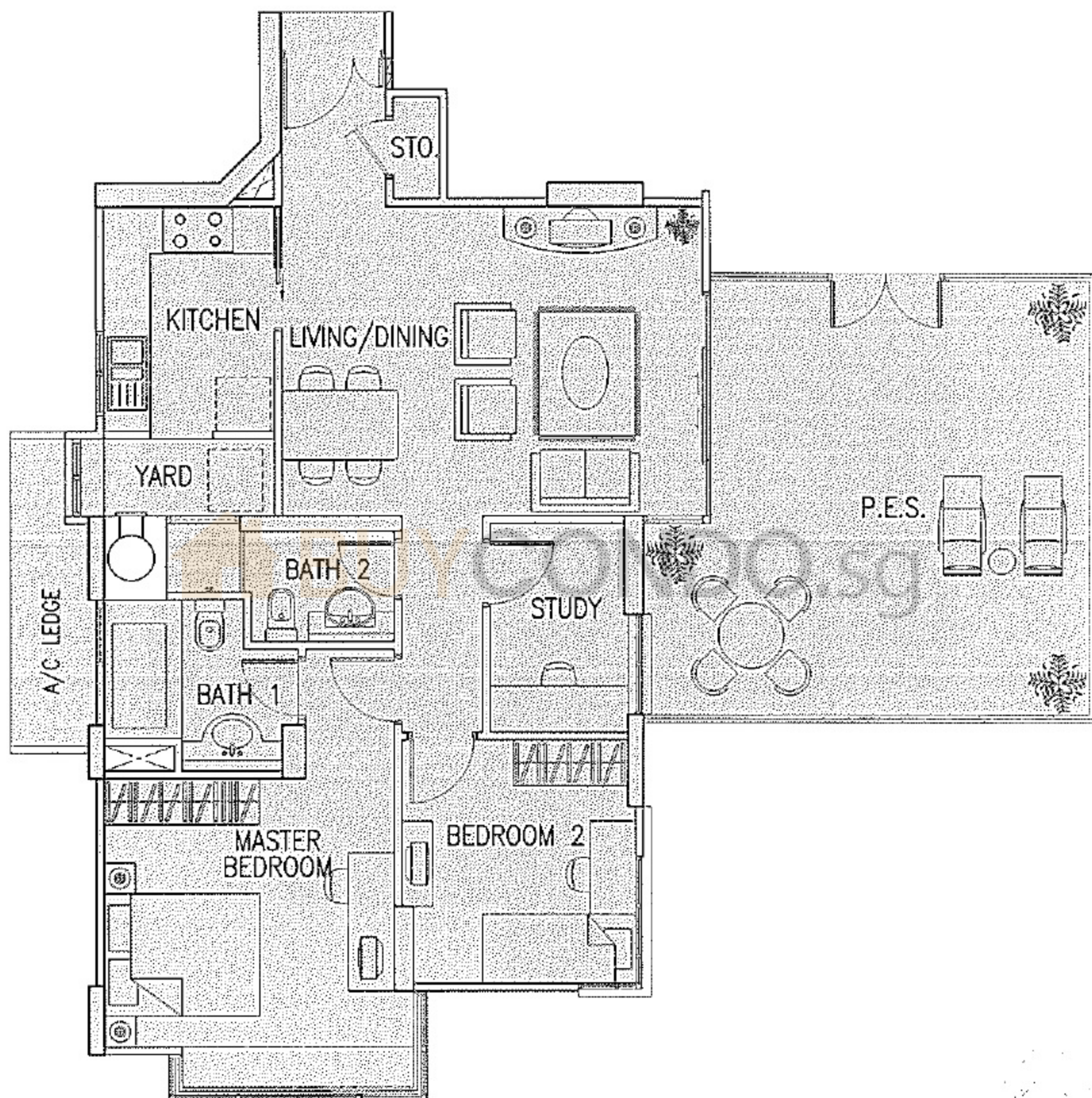
The above plans are not to scale and subject to any amendments as may be approved by the relevant authorities. All apartment areas are approximate of typical plans and are subject to final survey. The developer and its agents cannot be held liable for any inaccuracies. For units on the 16th floor and above, please see further proposed plans.



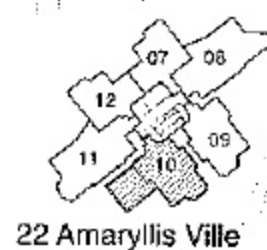
Typical Plan B2(p)

1,292 sq ft

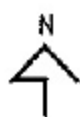
Guide to major areas of typical plan	Approx sq ft
Living/Dining	300
Master Bedroom	165
Bedroom 2	102
Study	54
Kitchen/Yard	95
PES	324



NEWTON ROAD

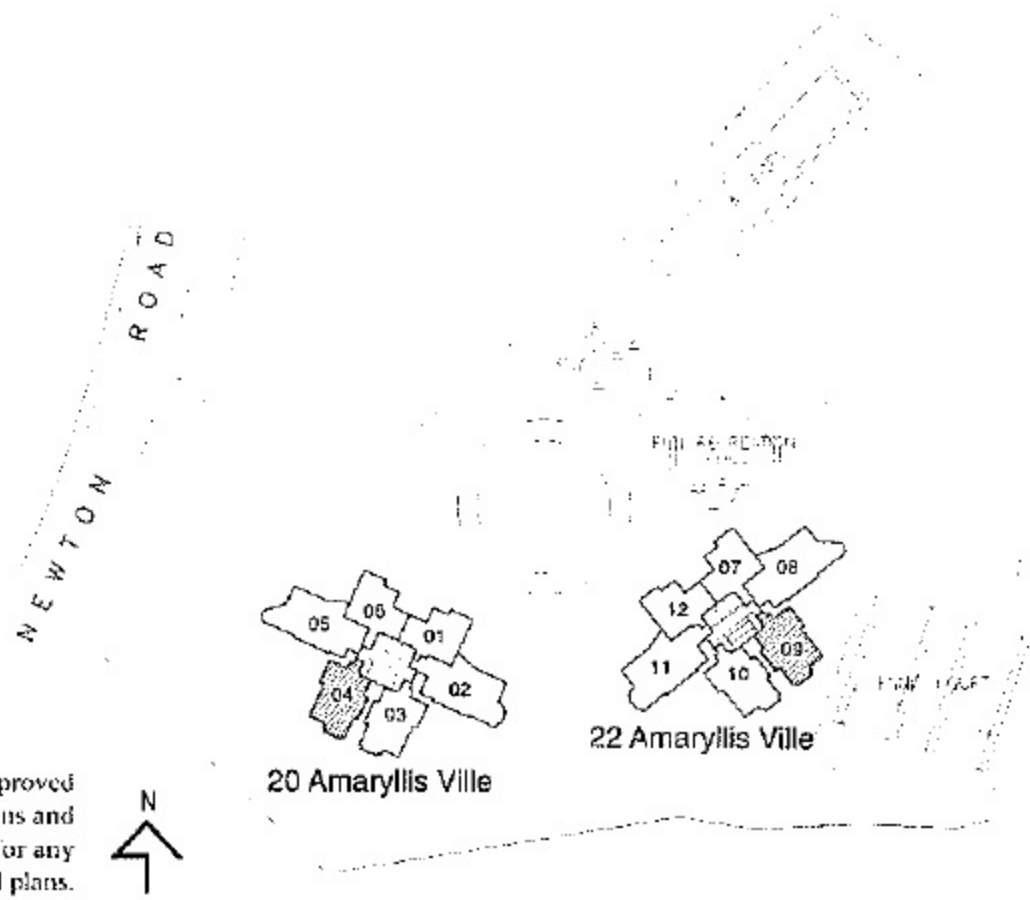
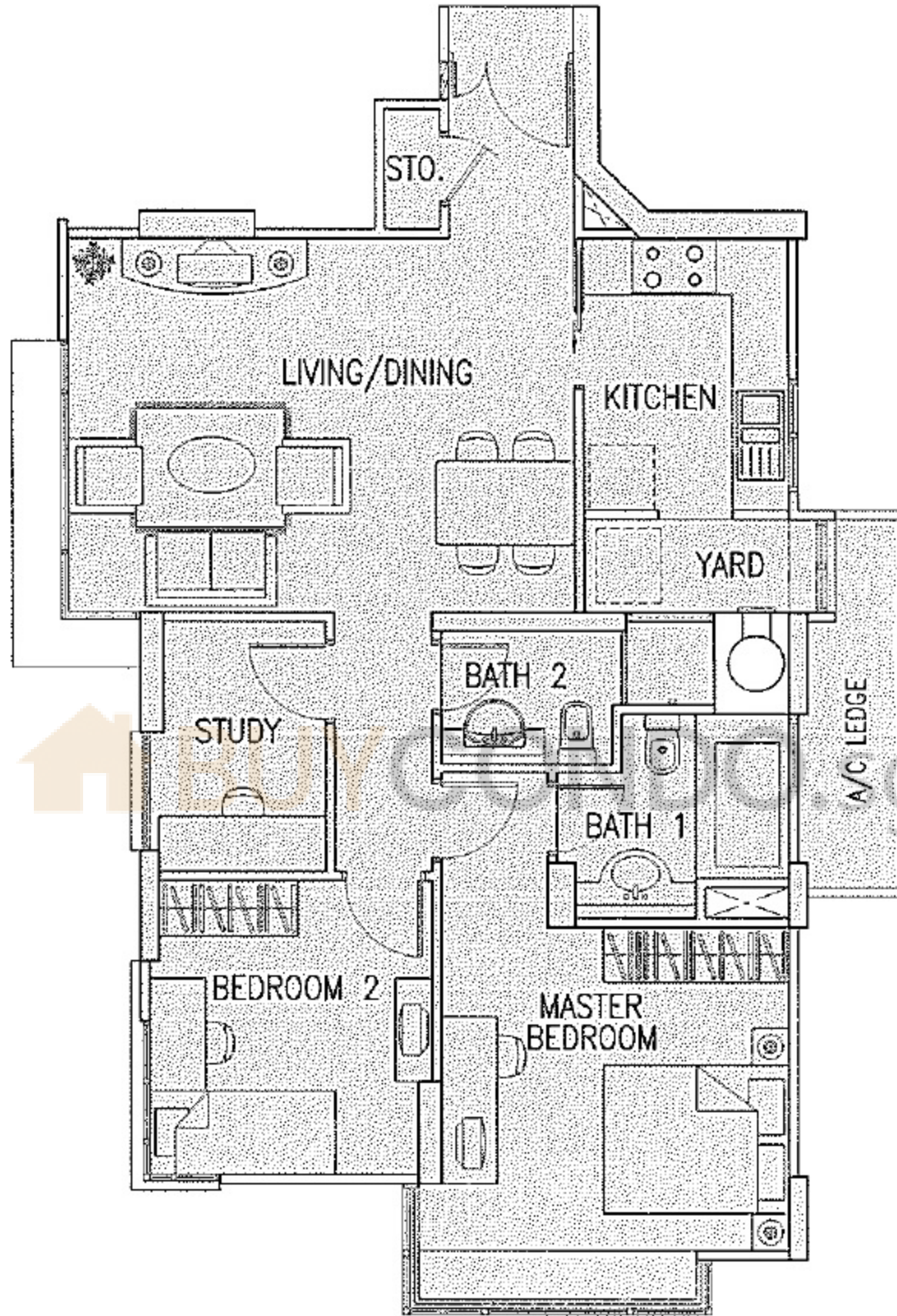


The above plans are not to scale and subject to any amendments as may be approved by the relevant authorities. All apartment areas are approximate of typical plans and are subject to final survey. The developer and its agents cannot be held liable for any inaccuracies.



Typical Plan B3 958 sq ft

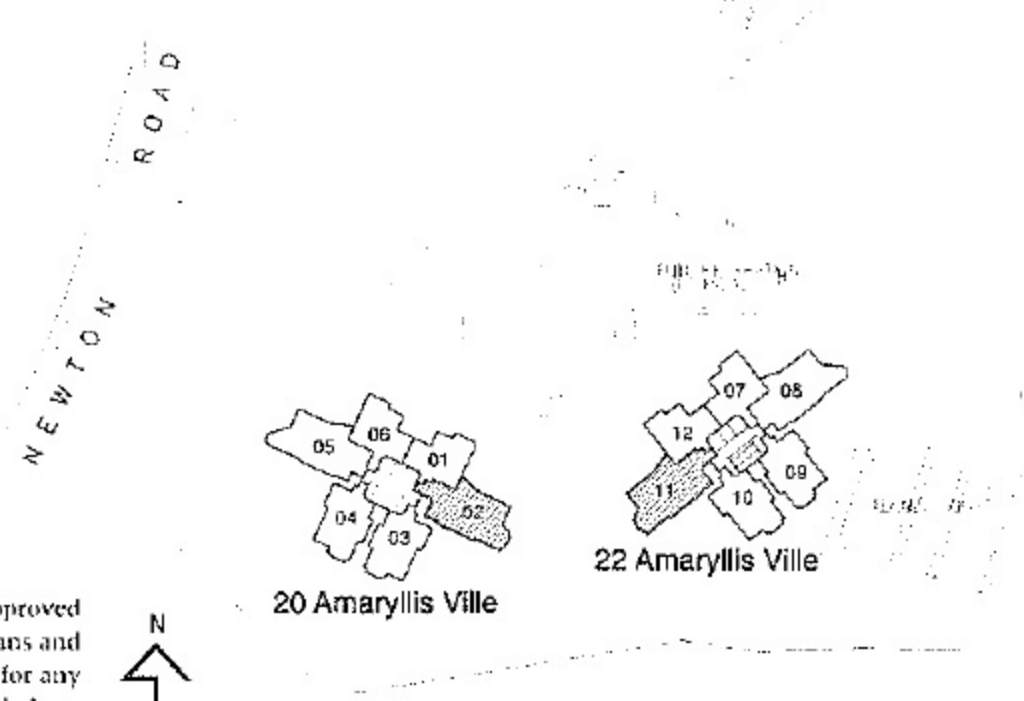
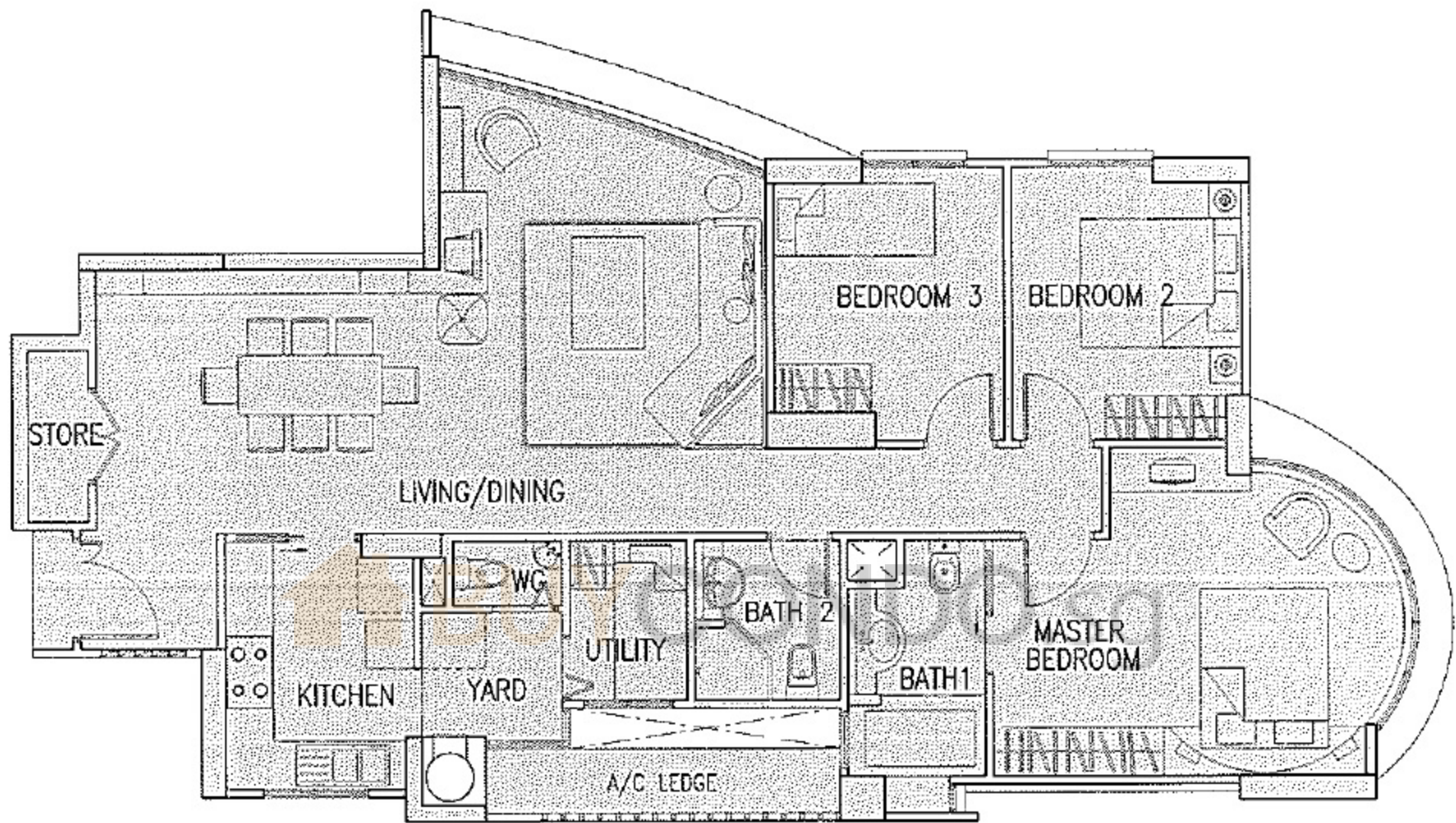
Guide to major areas of typical plan	Approx sq ft
Living/Dining	299
Master Bedroom	165
Bedroom 2	102
Study	54
Kitchen/Yard	95



The above plans are not to scale and subject to any amendments as may be approved by the relevant authorities. All apartment areas are approximate of typical plans and are subject to final survey. The developer and its agents cannot be held liable for any inaccuracies. For units on the 16th floor and above, please see further proposed plans.

Typical Plan C1 1,238 sq ft

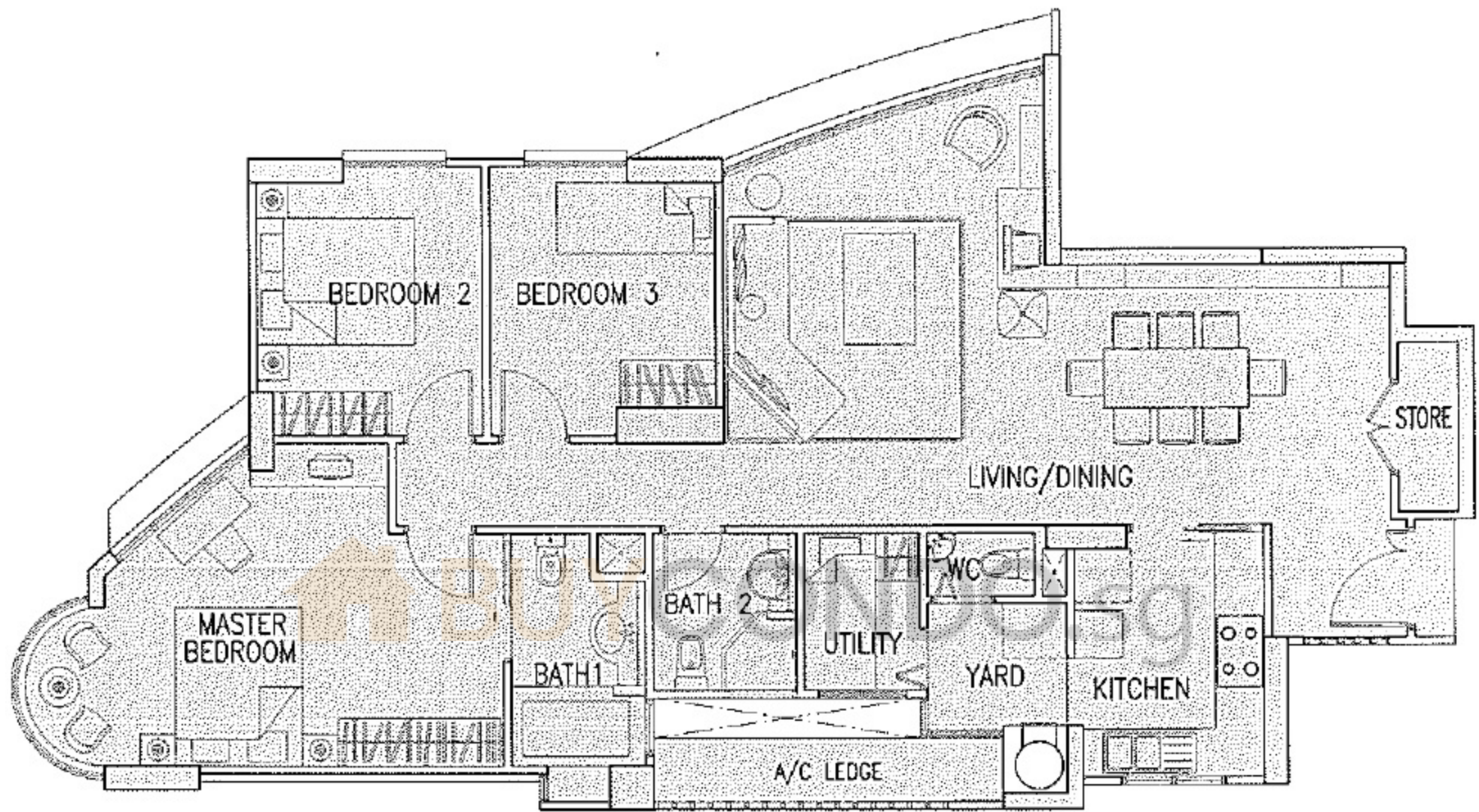
Guide to major areas of typical plan	Approx sq ft
Living/Dining	453
Master Bedroom	192
Bedroom 2	101
Bedroom 3	98
Kitchen	78



The above plans are not to scale and subject to any amendments as may be approved by the relevant authorities. All apartment areas are approximate of typical plans and are subject to final survey. The developer and its agents cannot be held liable for any inaccuracies. For units on the 16th floor and above, please see further proposed plans.

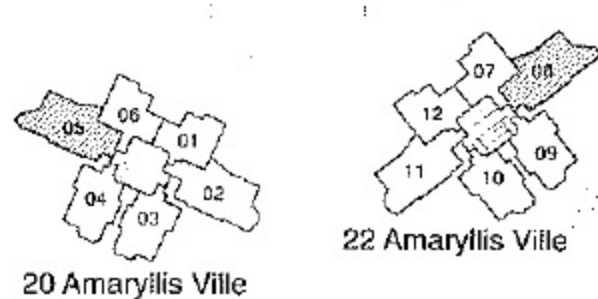
Typical Plan C2 1,259 sq ft

Guide to major areas of typical plan	Approx sq ft
Living/Dining	453
Master Bedroom	207
Bedroom 2	101
Bedroom 3	98
Kitchen	78



NEWTON ROAD

N
↑

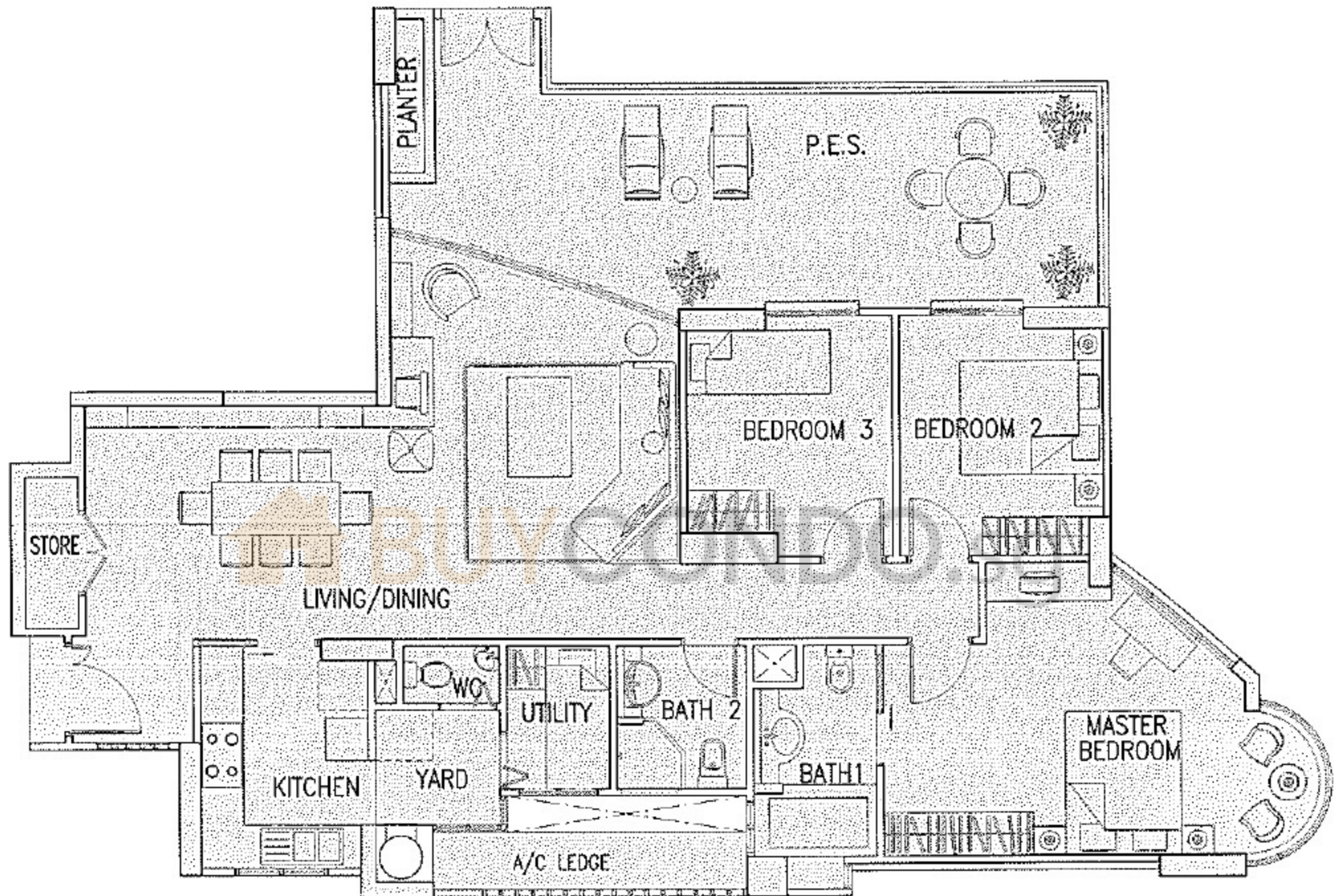


The above plans are not to scale and subject to any amendments as may be approved by the relevant authorities. All apartment areas are approximate of typical plans and are subject to final survey. The developer and its agents cannot be held liable for any inaccuracies. For units on the 16th floor and above, please see further proposed plans.

Typical Plan C2(p)

1,604 sq ft
(#02-08)

Guide to major area	Approx sq ft
Living/Dining	453
Master Bedroom	207
Bedroom 2	101
Bedroom 3	98
Kitchen	78
PES	305



NEWTON ROAD

N



20 Amaryllis Ville



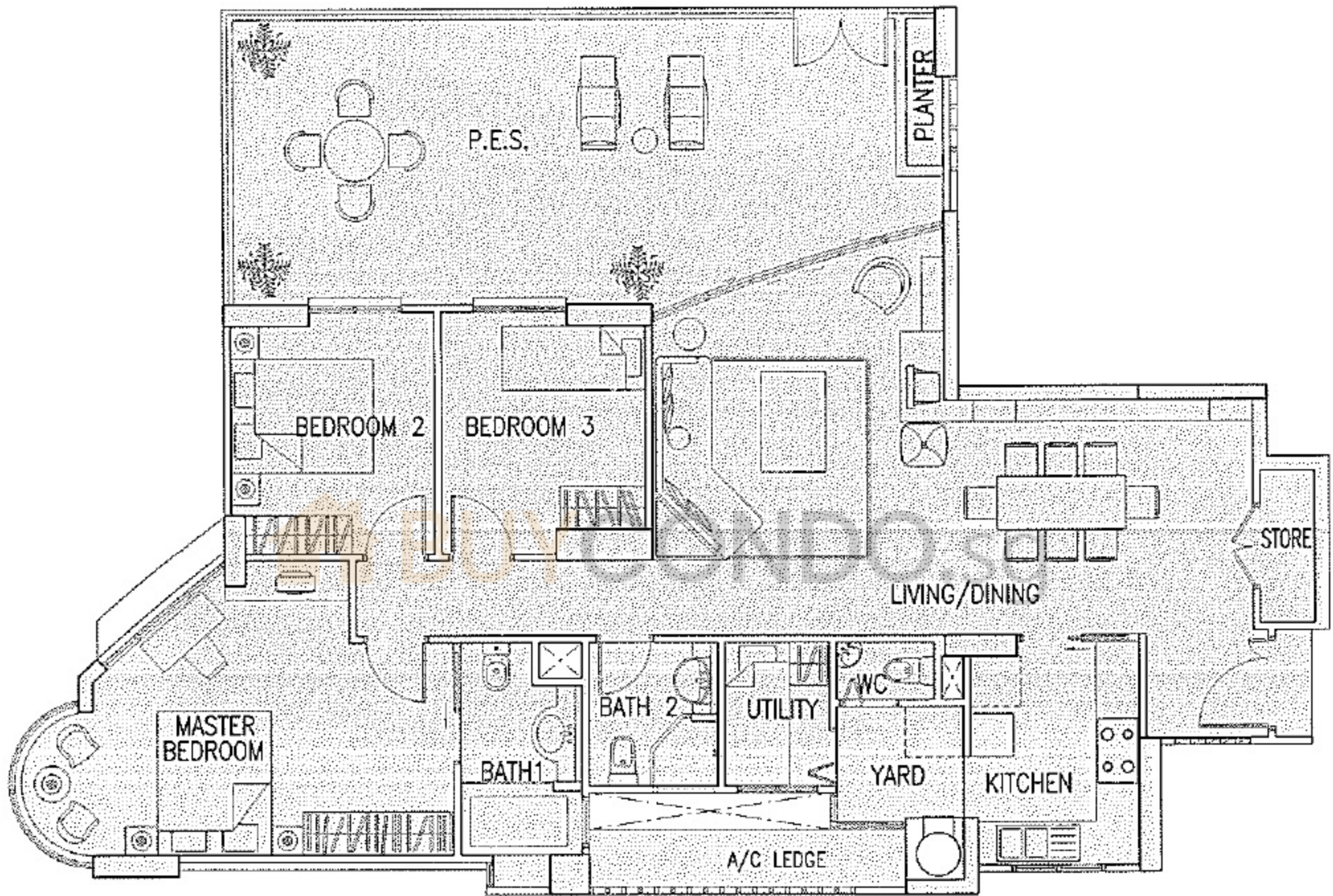
22 Amaryllis Ville

The above plans are not to scale and subject to any amendments as may be approved by the relevant authorities. All apartment areas are approximate of typical plans and are subject to final survey. The developer and its agents cannot be held liable for any inaccuracies.

Typical Plan C2(p)

1,679 sq ft
(#02-05)

Guide to major area	Approx sq ft
Living/Dining	453
Master Bedroom	207
Bedroom 2	101
Bedroom 3	98
Kitchen	78
PES	383



NEWTON ROAD

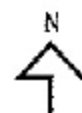


20 Amaryllis Ville



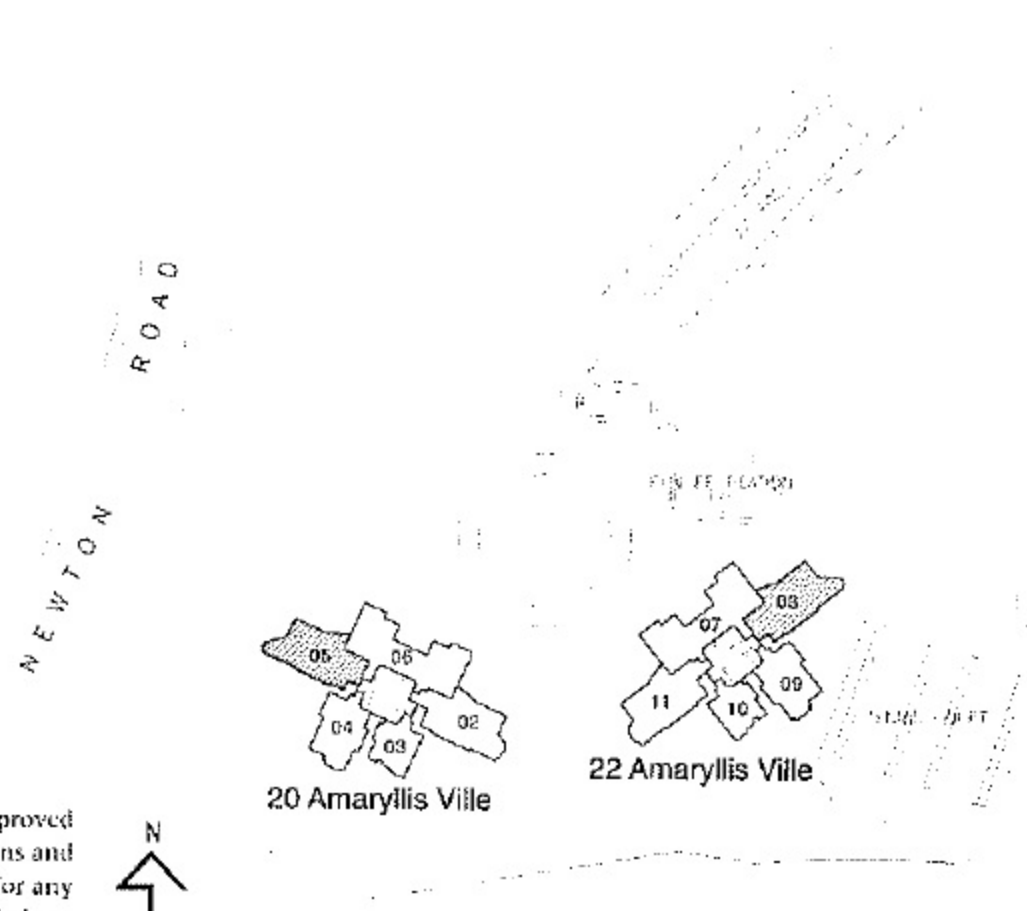
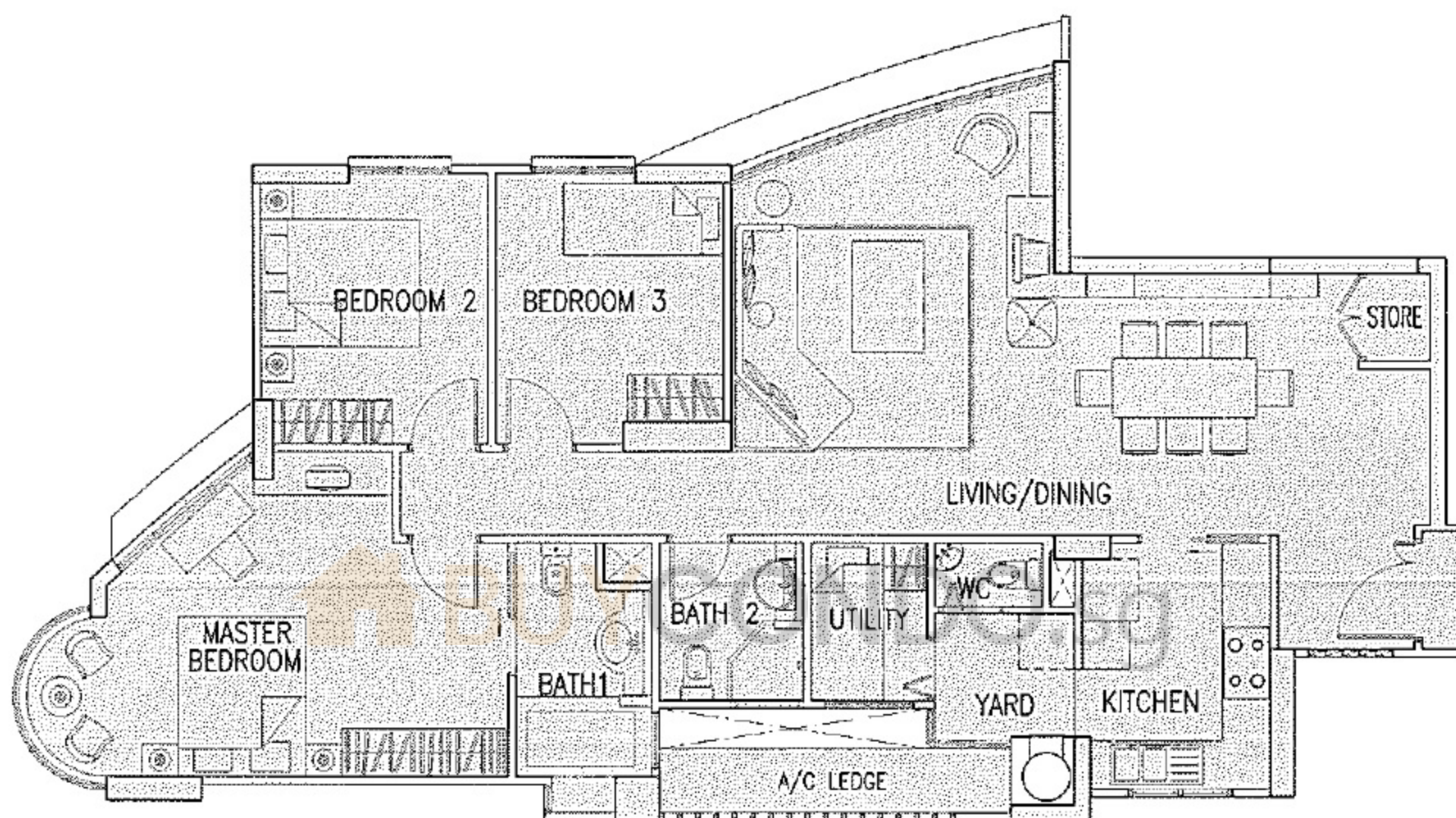
22 Amaryllis Ville

The above plans are not to scale and subject to any amendments as may be approved by the relevant authorities. All apartment areas are approximate of typical plans and are subject to final survey. The developer and its agents cannot be held liable for any inaccuracies.



Typical Plan C3 1,259 sq ft

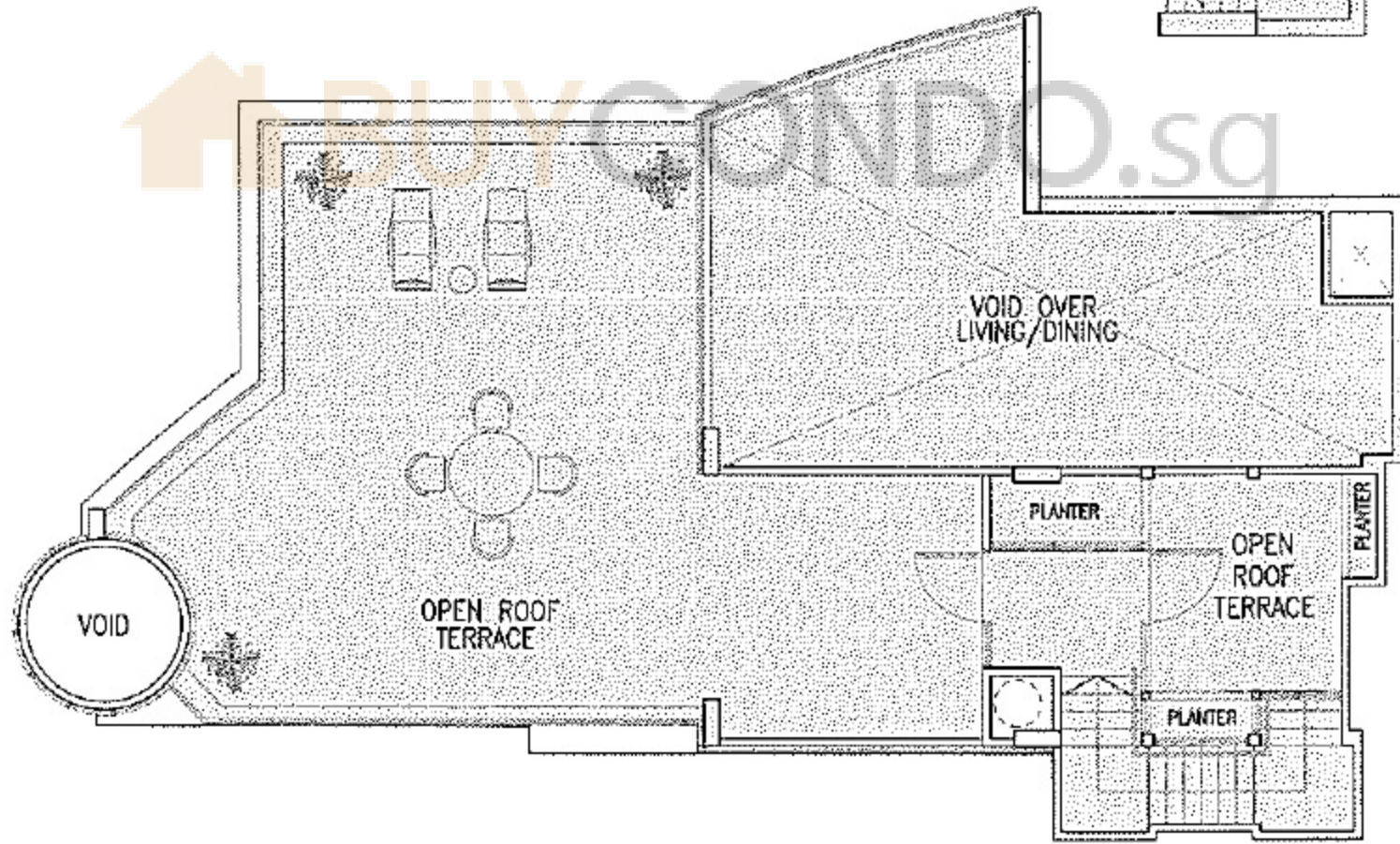
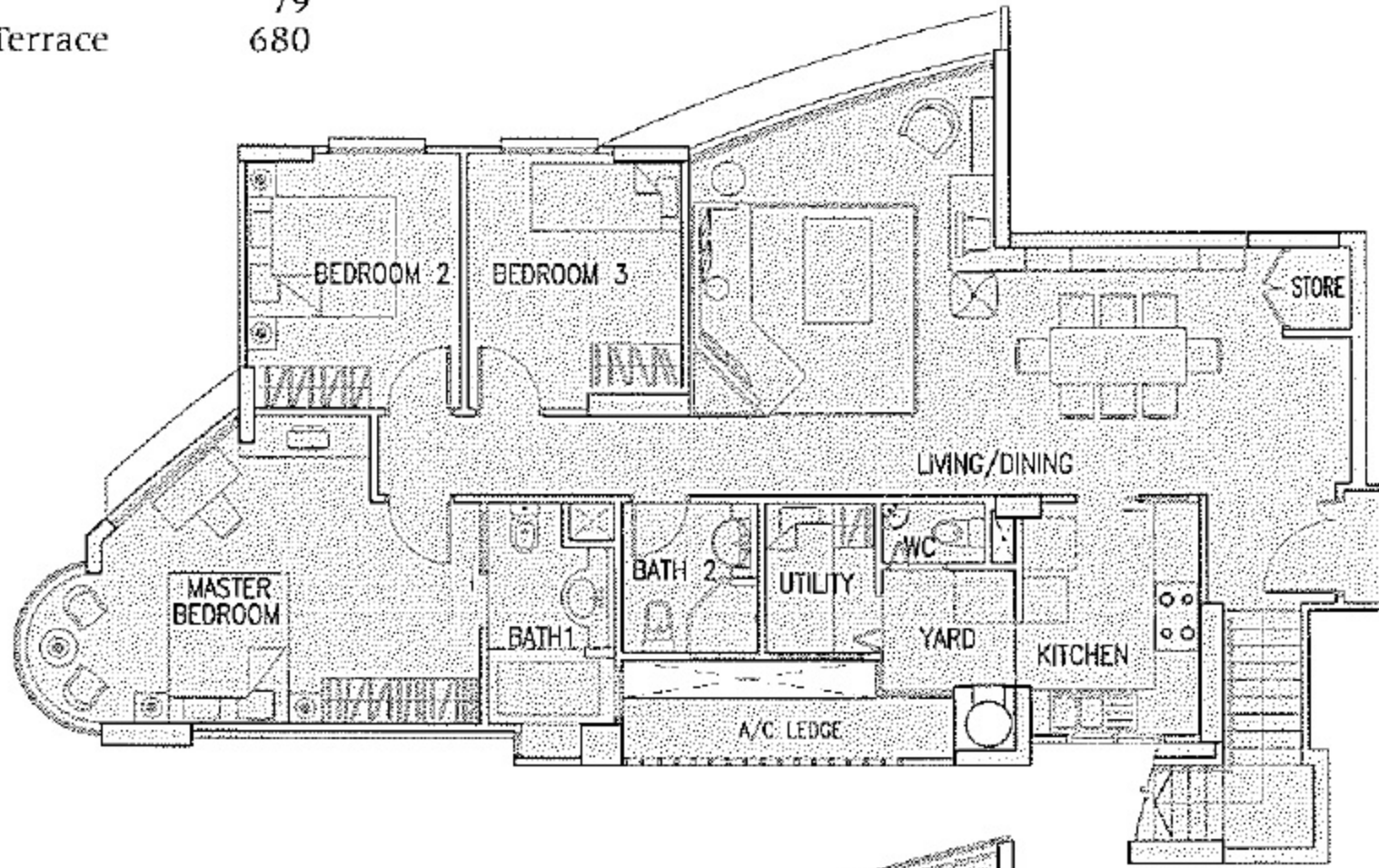
<i>Guide to major areas of typical plan</i>	<i>Approx sq ft</i>
Living/Dining	455
Master Bedroom	207
Bedroom 2	102
Bedroom 3	100
Kitchen	78



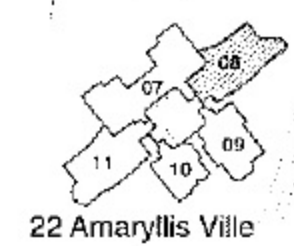
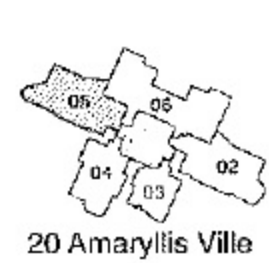
The above plans are not to scale and subject to any amendments as may be approved by the relevant authorities. All apartment areas are approximate of typical plans and are subject to final survey. The developer and its agents cannot be held liable for any inaccuracies. For units on the 16th floor and above, please see further proposed plans.

Typical Plan C3(r) 2,594 sq ft

Guide to major areas of typical plan	Approx sq ft
Living/Dining	455
Master Bedroom	208
Bedroom 2	103
Bedroom 3	100
Kitchen	79
Open Roof Terrace	680



NEWTON ROAD

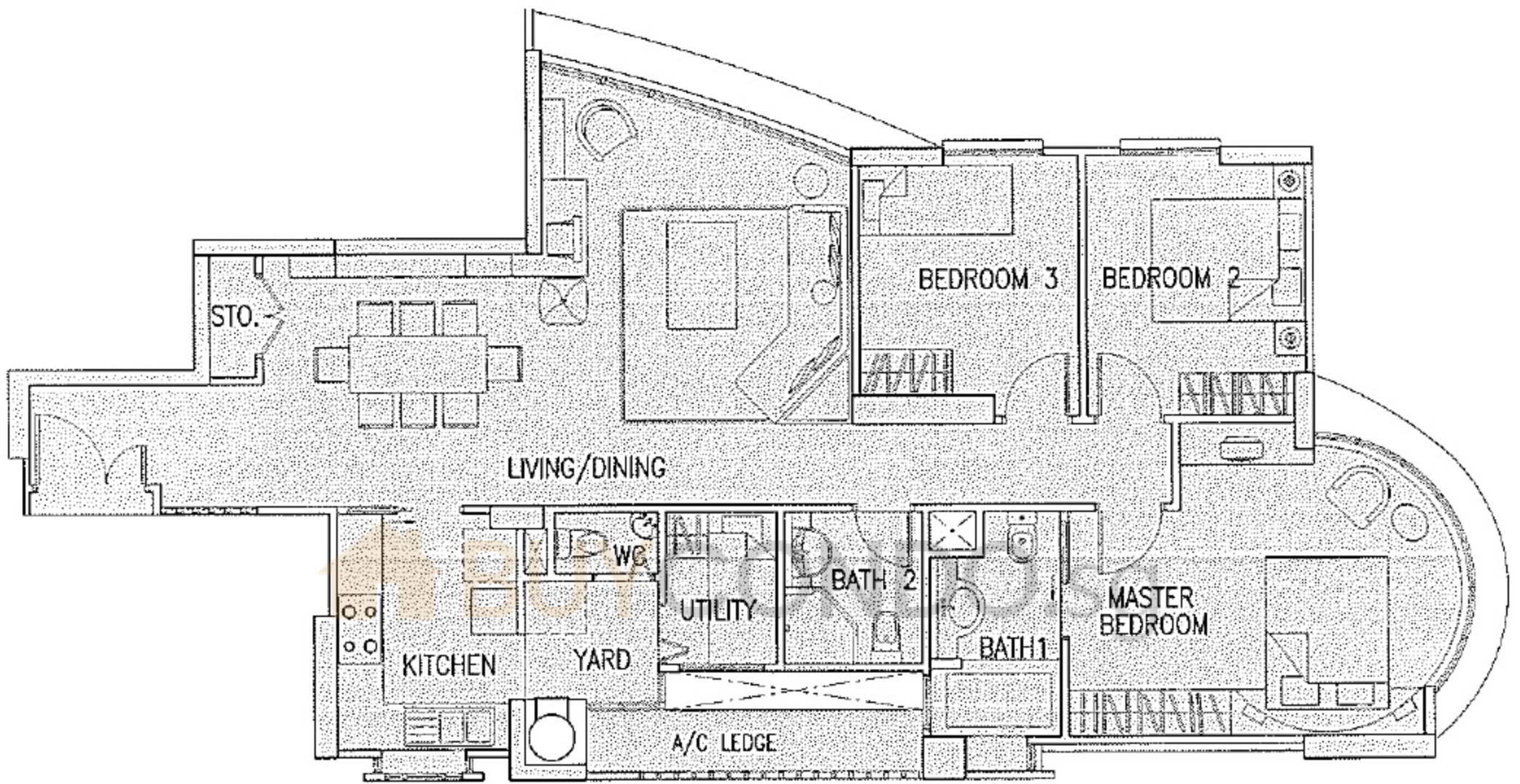


The above plans are not to scale and subject to any amendments as may be approved by the relevant authorities. All apartment areas are approximate of typical plans and are subject to final survey. The developer and its agents cannot be held liable for any inaccuracies. For units on the 16th floor and above, please see further proposed plans.

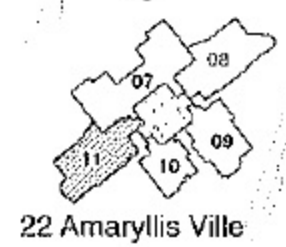
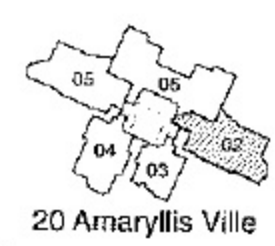


Typical Plan C4 1,238 sq ft

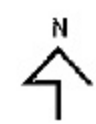
Guide to major areas of typical plan	Approx sq ft
Living/Dining	451
Master Bedroom	192
Bedroom 2	102
Bedroom 3	98
Kitchen	78



NEWTON ROAD

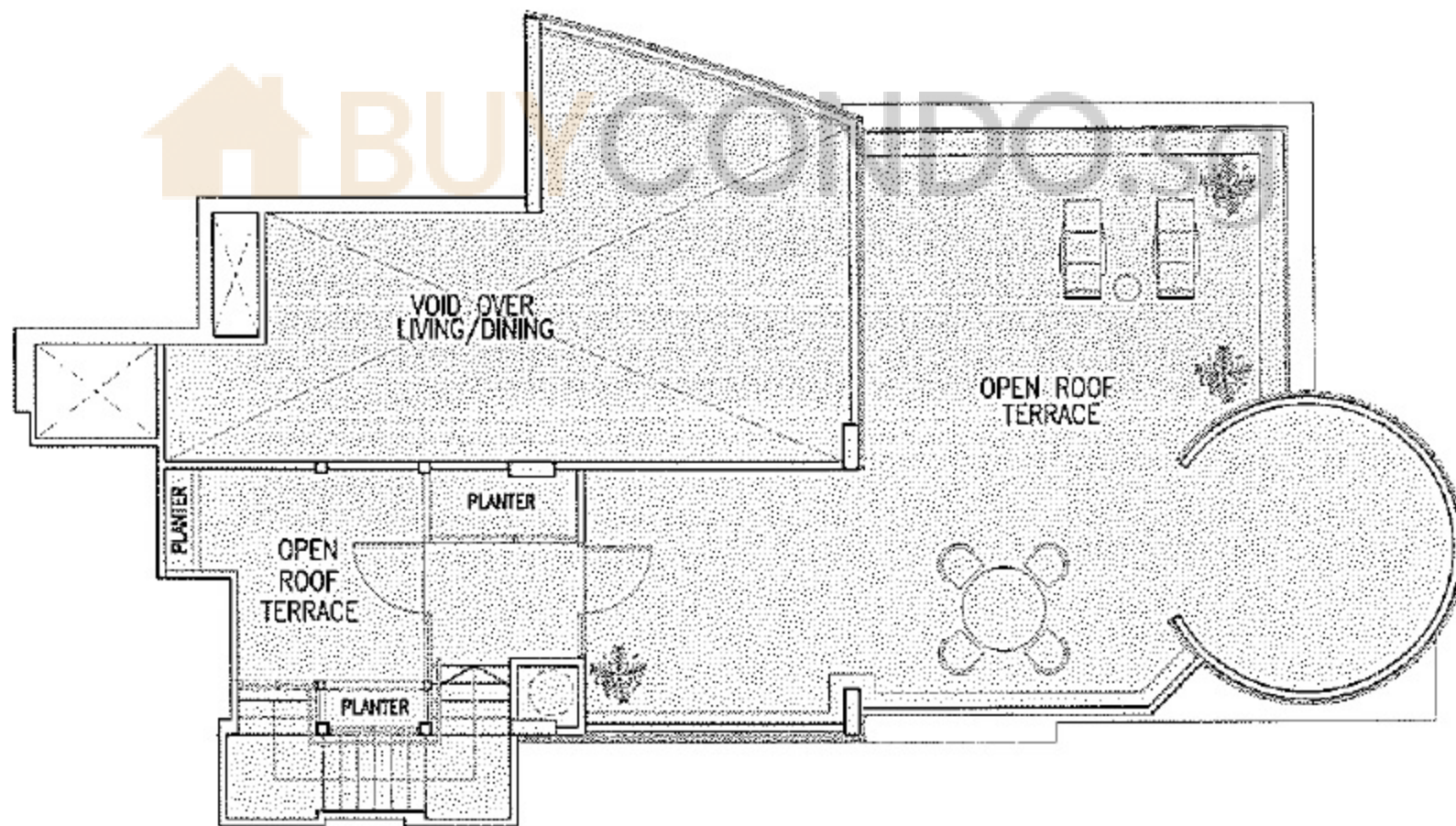
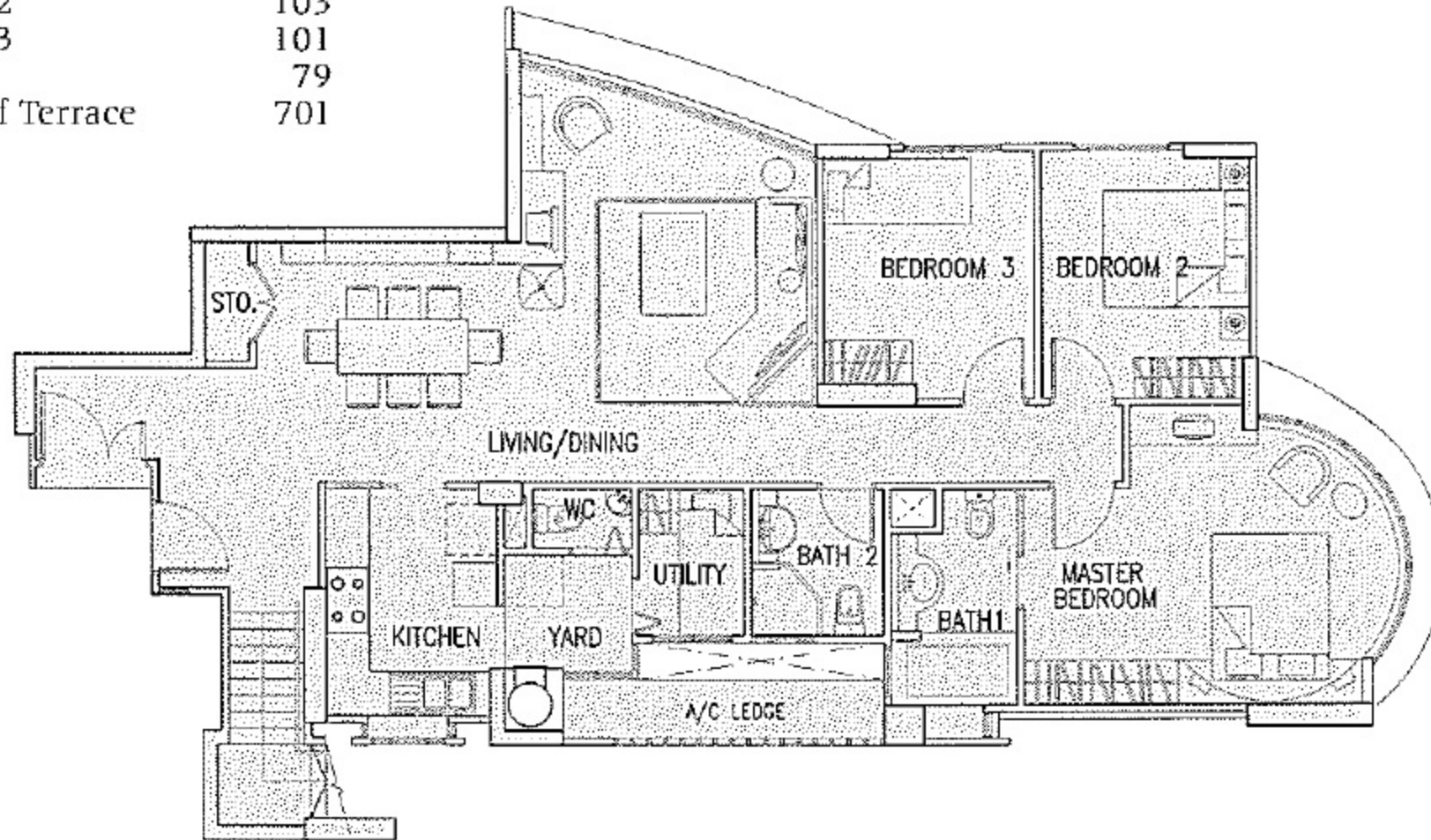


The above plans are not to scale and subject to any amendments as may be approved by the relevant authorities. All apartment areas are approximate of typical plans and are subject to final survey. The developer and its agents cannot be held liable for any inaccuracies. For units on the 16th floor and above, please see further proposed plans.

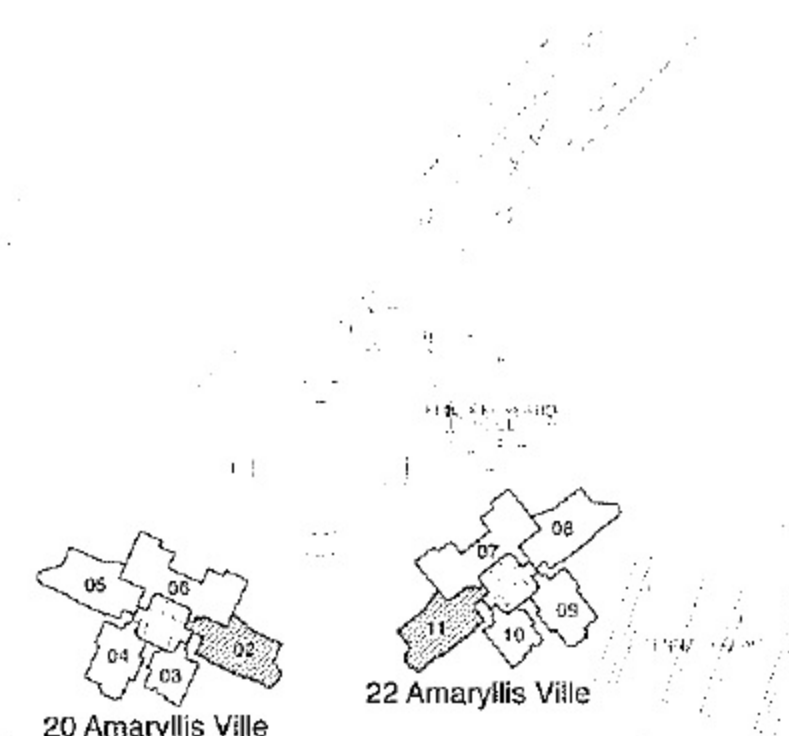


Typical Plan C4(r) 2,605 sq ft

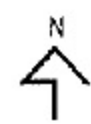
Guide to major areas of typical plan	Approx sq ft
Living/Dining	485
Master Bedroom	192
Bedroom 2	103
Bedroom 3	101
Kitchen	79
Open Roof Terrace	701



NEWTON ROAD

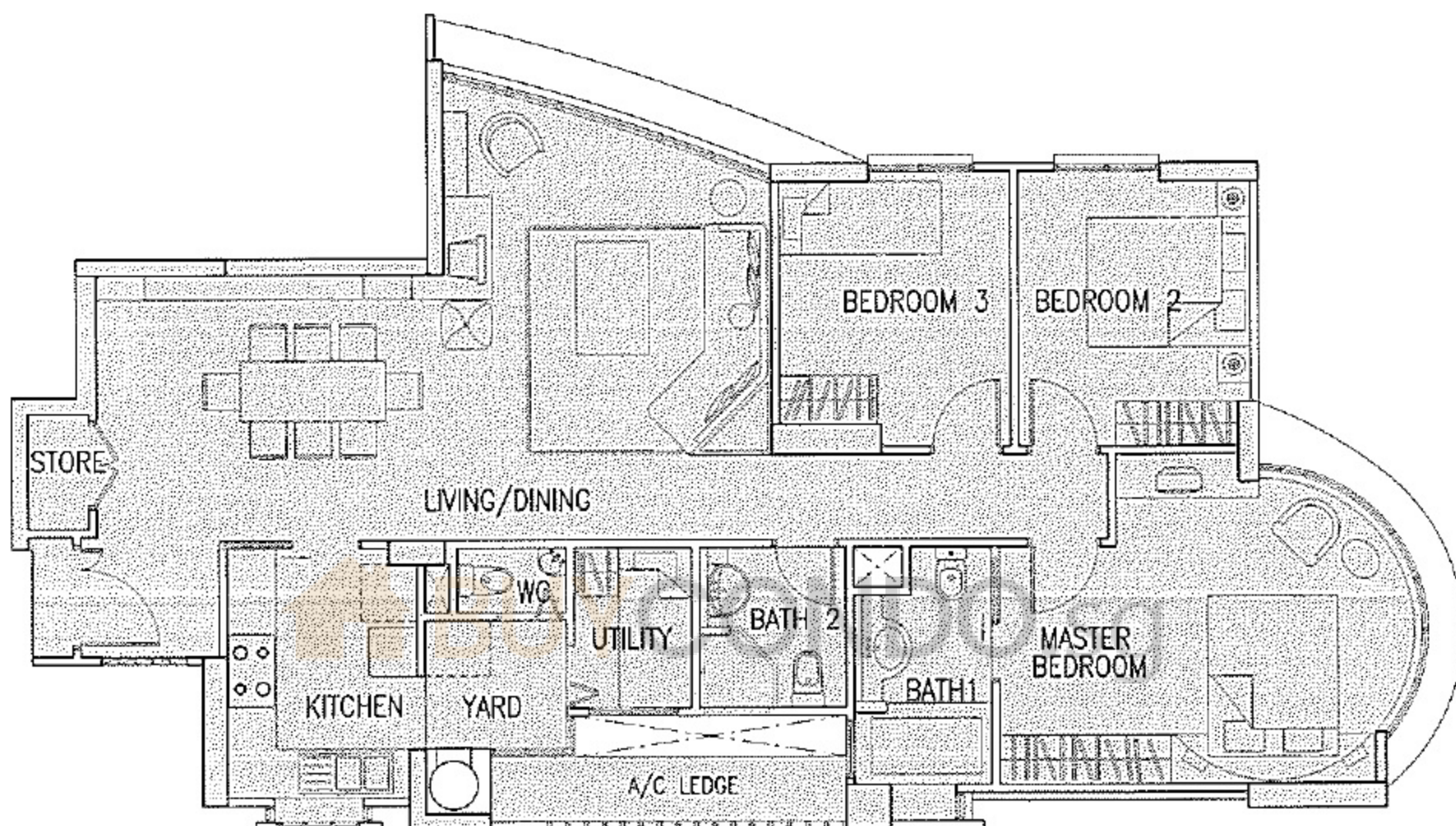


The above plans are not to scale and subject to any amendments as may be approved by the relevant authorities. All apartment areas are approximate of typical plans and are subject to final survey. The developer and its agents cannot be held liable for any inaccuracies. For units on the 16th floor and above, please see further proposed plans.

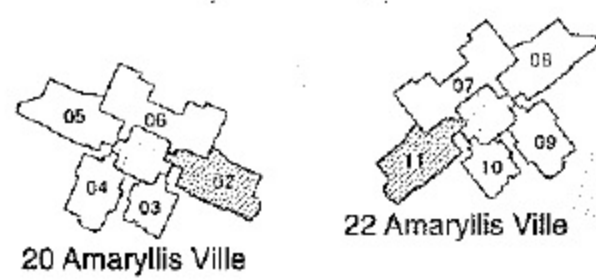


Typical Plan C5 1,238 sq ft

Guide to major areas of typical plan	Approx sq ft
Living/Dining	453
Master Bedroom	192
Bedroom 2	102
Bedroom 3	100
Kitchen	78



NEWTON ROAD

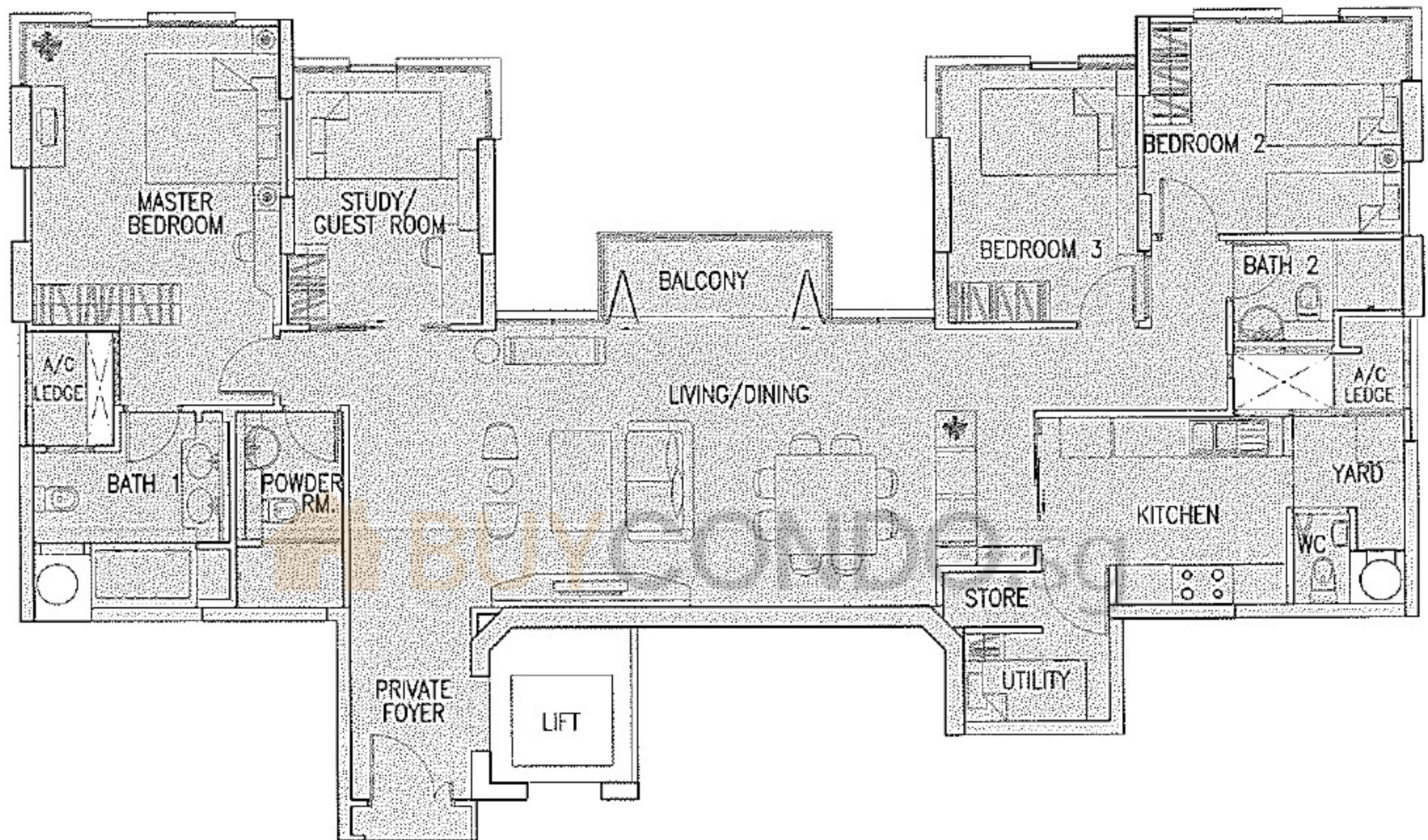


The above plans are not to scale and subject to any amendments as may be approved by the relevant authorities. All apartment areas are approximate of typical plans and are subject to final survey. The developer and its agents cannot be held liable for any inaccuracies. For units on the 16th floor and above, please see further proposed plans.



Typical Plan D1 1,690 sq ft

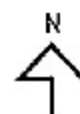
Guide to major areas of typical plan	Approx sq ft
Living/Dining	583
Master Bedroom	209
Bedroom 2	127
Bedroom 3	114
Study/Guest Room	114
Kitchen	105
Balcony	48



NEWTON ROAD

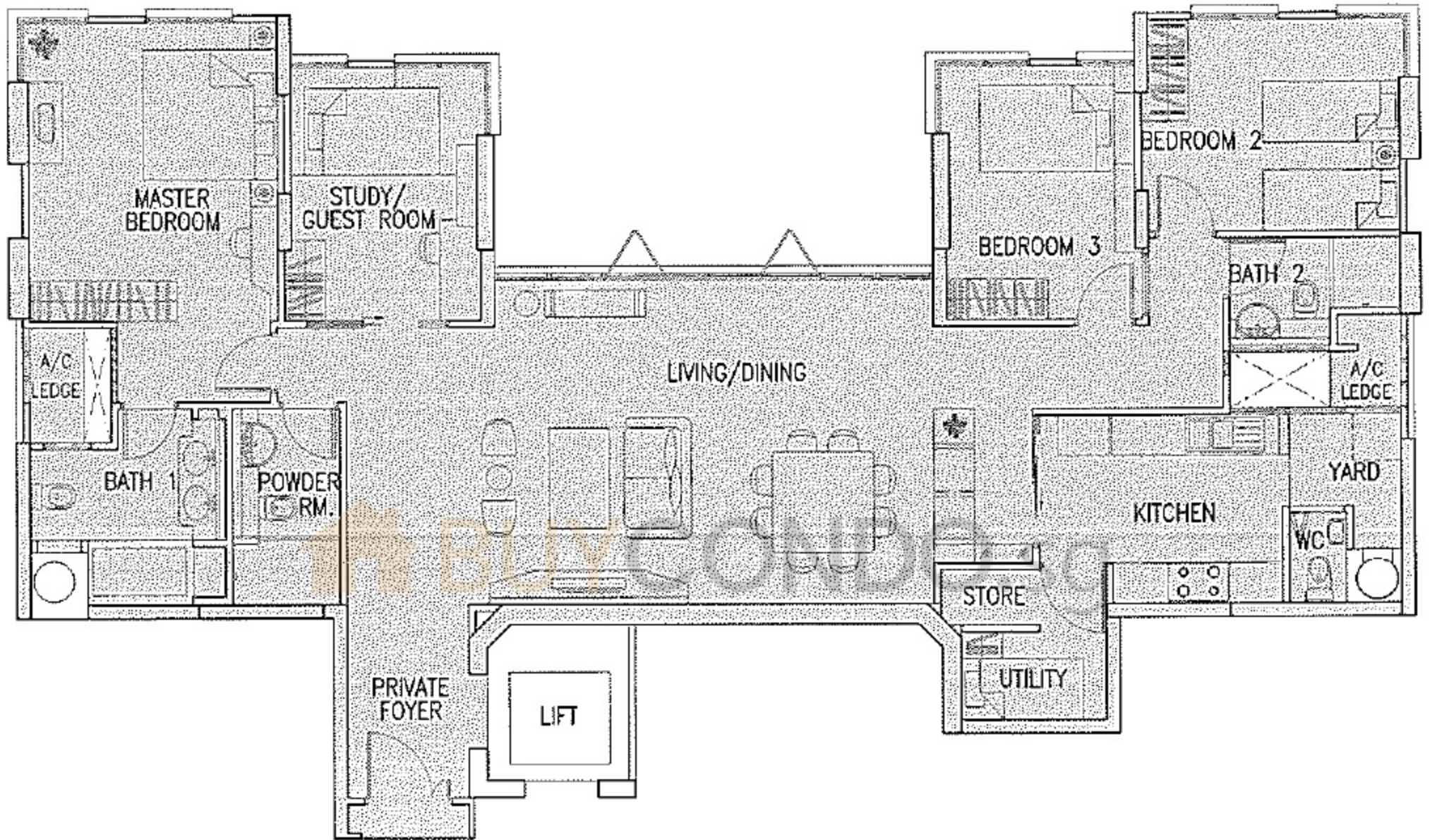


The above plans are not to scale and subject to any amendments as may be approved by the relevant authorities. All apartment areas are approximate of typical plans and are subject to final survey. The developer and its agents cannot be held liable for any inaccuracies.

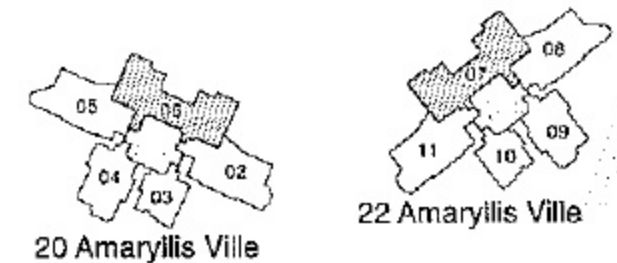


Typical Plan D2 1,690 sq ft

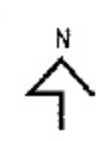
<i>Guide to major areas of typical plan</i>	<i>Approx sq ft</i>
Living/Dining	622
Master Bedroom	209
Bedroom 2	127
Bedroom 3	114
Study/Guest Room	114
Kitchen	105



NEWTON ROAD

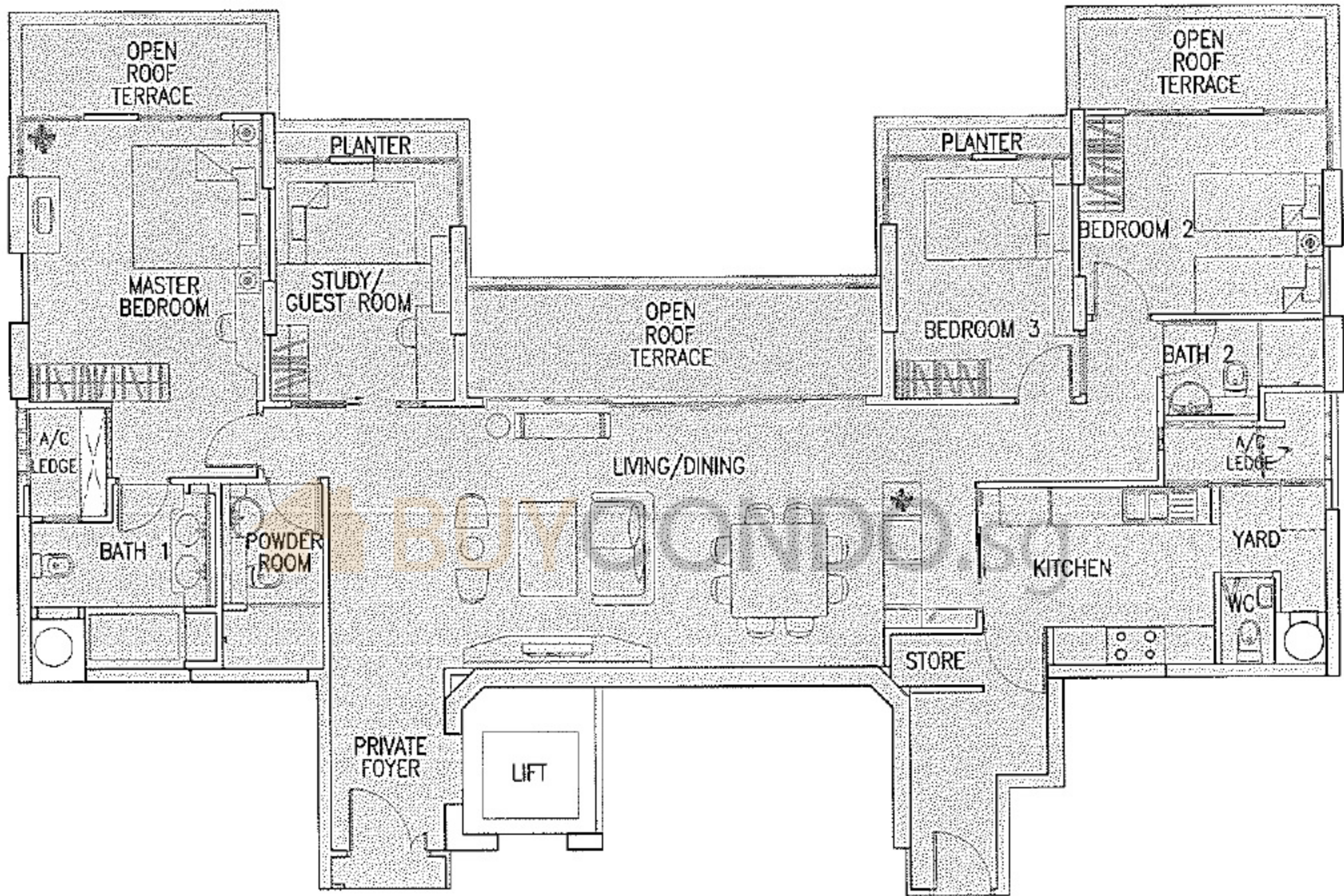


The above plans are not to scale and subject to any amendments as may be approved by the relevant authorities. All apartment areas are approximate of typical plans and are subject to final survey. The developer and its agents cannot be held liable for any inaccuracies.

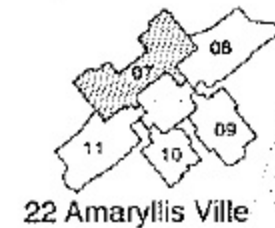


Typical Plan D3(r) 1,991 sq ft

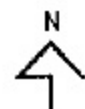
Guide to major areas of typical plan	Approx sq ft
Living/Dining	575
Master Bedroom	209
Bedroom 2	127
Bedroom 3	114
Study/Guest Room	114
Kitchen	105
Open Roof Terrace	242



NEWTON ROAD

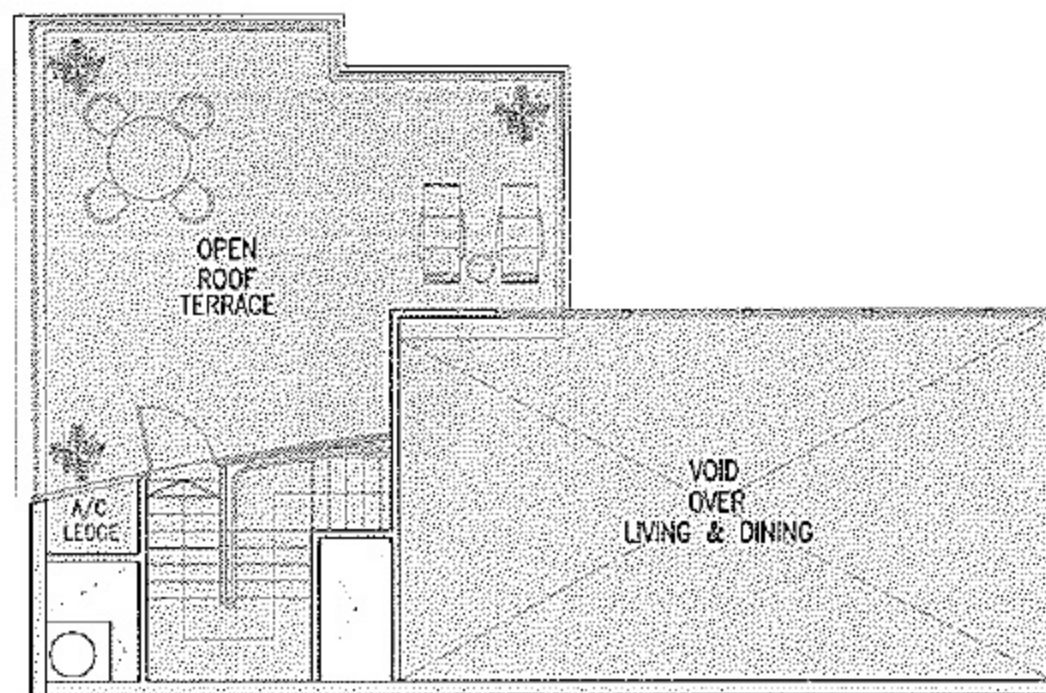
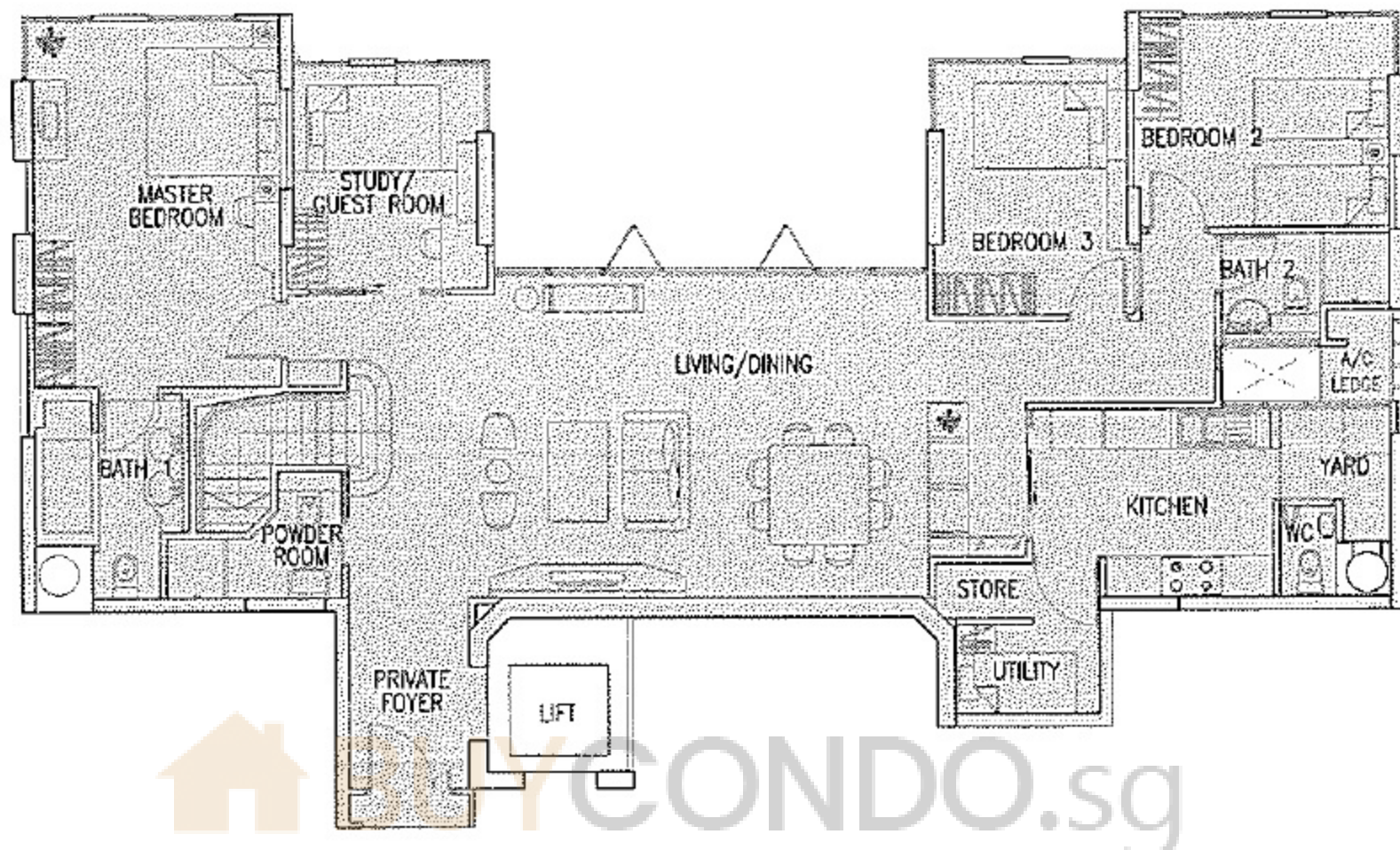


The above plans are not to scale and subject to any amendments as may be approved by the relevant authorities. All apartment areas are approximate of typical plans and are subject to final survey. The developer and its agents cannot be held liable for any inaccuracies.

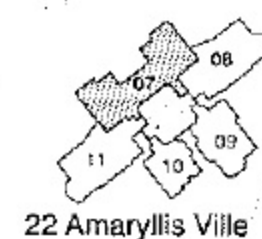
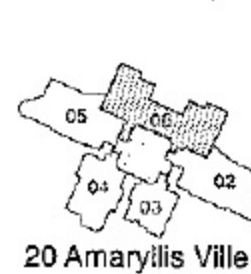


Typical Plan D4(r) 2,637 sq ft

Guide to major areas of typical plan	Approx sq ft
Living/Dining	619
Master Bedroom	223
Bedroom 2	127
Bedroom 3	115
Study/Guest Room	102
Kitchen	105
Open Roof Terrace	351



NEWTON ROAD



The above plans are not to scale and subject to any amendments as may be approved by the relevant authorities. All apartment areas are approximate of typical plans and are subject to final survey. The developer and its agents cannot be held liable for any inaccuracies.

