

TYPE B

2nd to 12th Storey - approx 137 sq m (1475 sq ft)
* 2nd and 3rd storey are without bay windows/planter boxes
二楼及三楼未设有凸窗与花圃

13th Storey - approx 135 sq m (1453 sq ft)



TYPE A

2nd to 12th Storey - approx 137 sq m (1475 sq ft)
* 2nd and 3rd storey are without bay windows/planter boxes
二楼及三楼未设有凸窗与花圃

13th Storey - approx 135 sq m (1453 sq ft)



EURO-ASIA REALTY

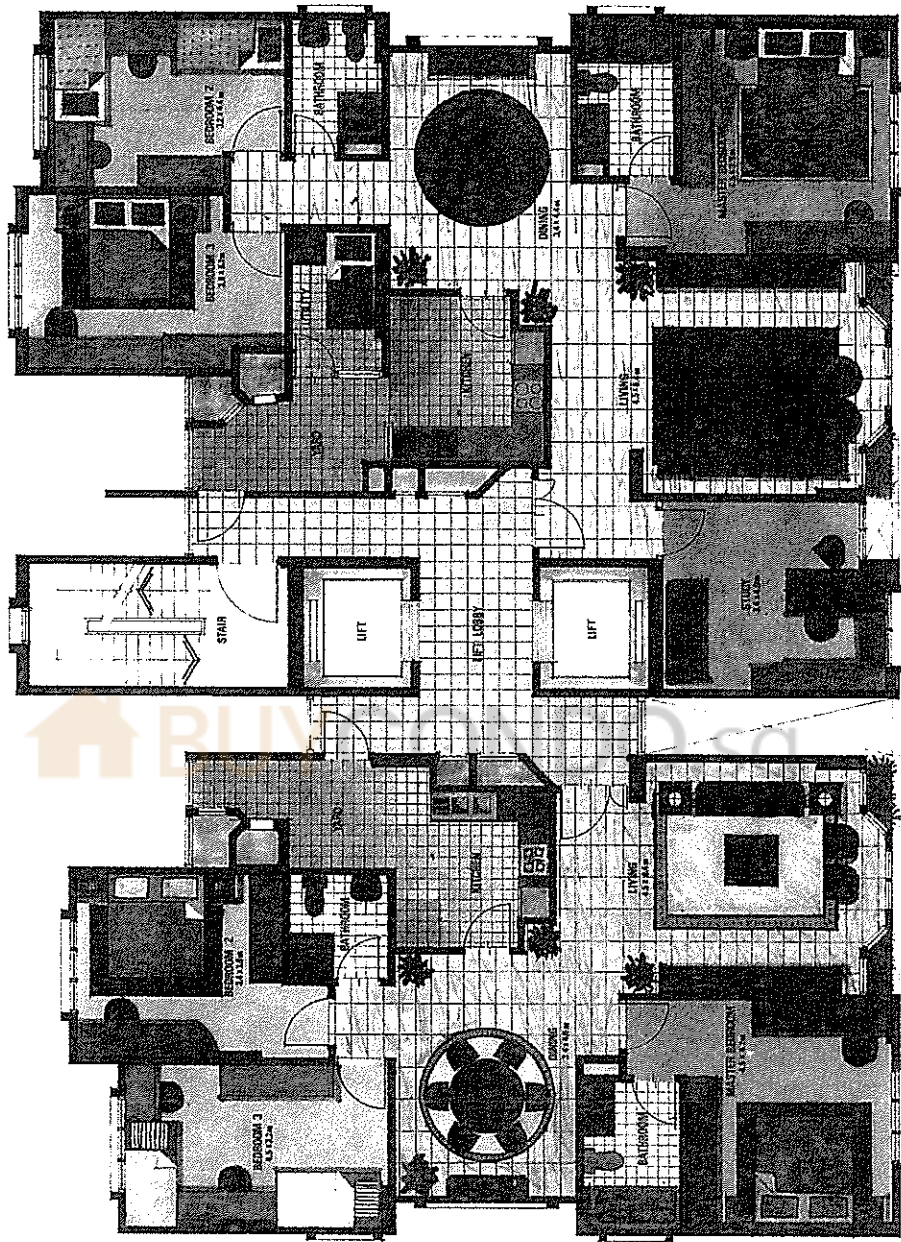


TYPE D

2nd to 14th Storey - approx 156 sq m (1679 sq ft)

* 2nd and 3rd storey are without bay windows/planter boxes
二楼及三楼未设有凸窗与花圃

15th Storey - approx 155 sq m (1668 sq ft)

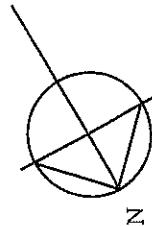


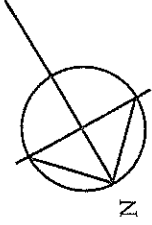
TYPE C

2nd to 14th Storey - approx 128 sq m (1378 sq ft)

* 2nd and 3rd storey are without bay windows and planter boxes
二楼及三楼未设有凸窗与花圃

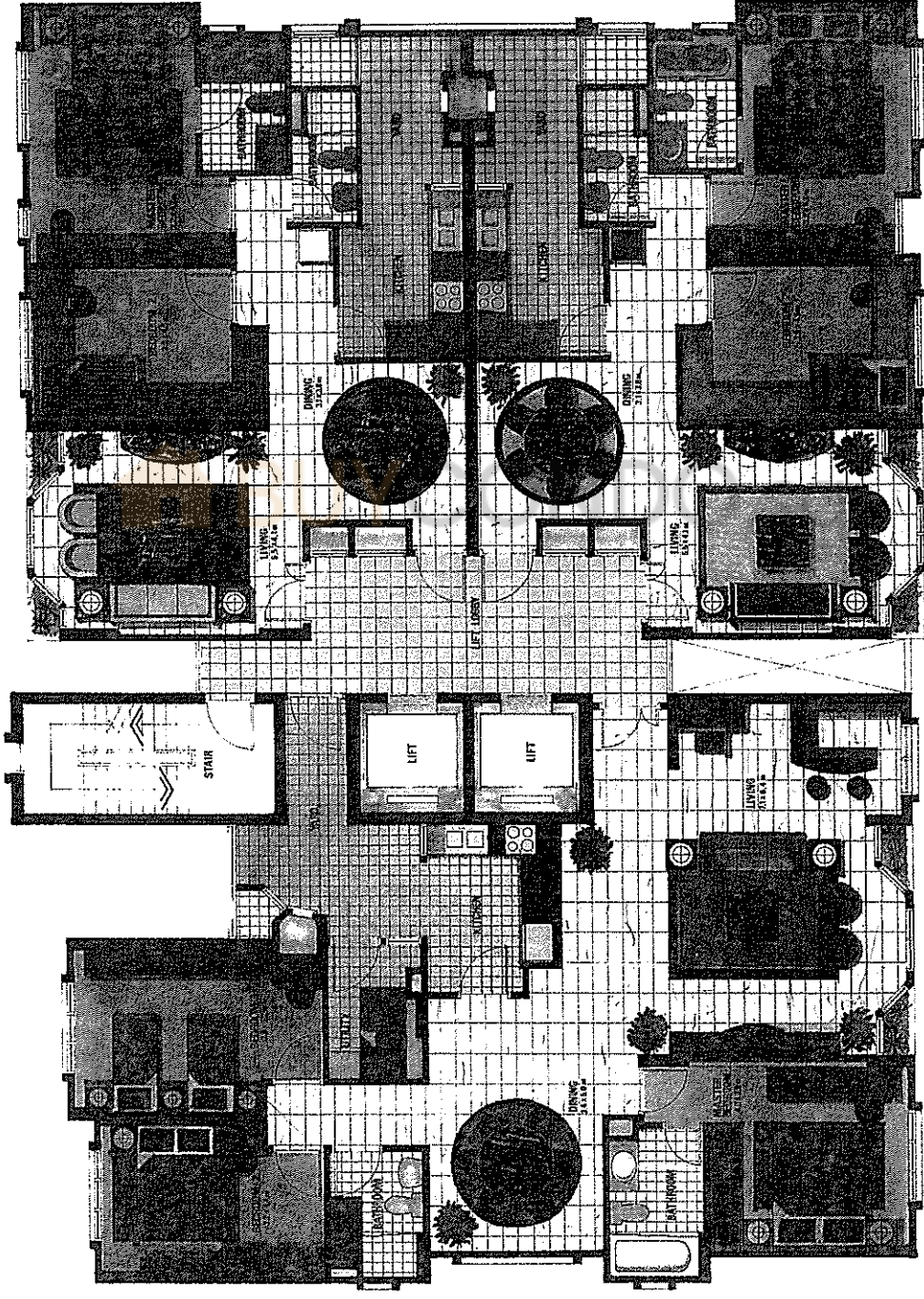
15th Storey - approx 127 sq m (1367 sq ft)





TYPE F

1st to 18th Storey - approx 100 sq m (1076 sq ft)
 * 1st to 3rd storey are without bay windows/planter boxes
 一楼至三楼未设有凸窗与花圃



TYPE G

1st to 18th Storey - approx 100 sq m (1076 sq ft)
 * 1st to 3rd storey are without bay windows/planter boxes
 一楼至三楼未设有凸窗与花圃

TYPE E

2nd to 17th Storey - approx 158 sq m (1700 sq ft)
 * 2nd and 3rd storey are without bay windows/planter boxes
 二楼及三楼未设有凸窗与花圃

18th Storey - approx 157 sq m (1690 sq ft)