

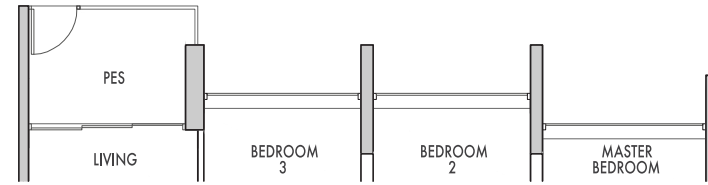
# 3 BEDROOM DELUXE + STUDY

## TYPE C1a (p)

88 sqm (947 sqft)

**BLOCK 81**  
#01-22

**MIRRORED  
BLOCK 81**  
#01-21



## TYPE C1a

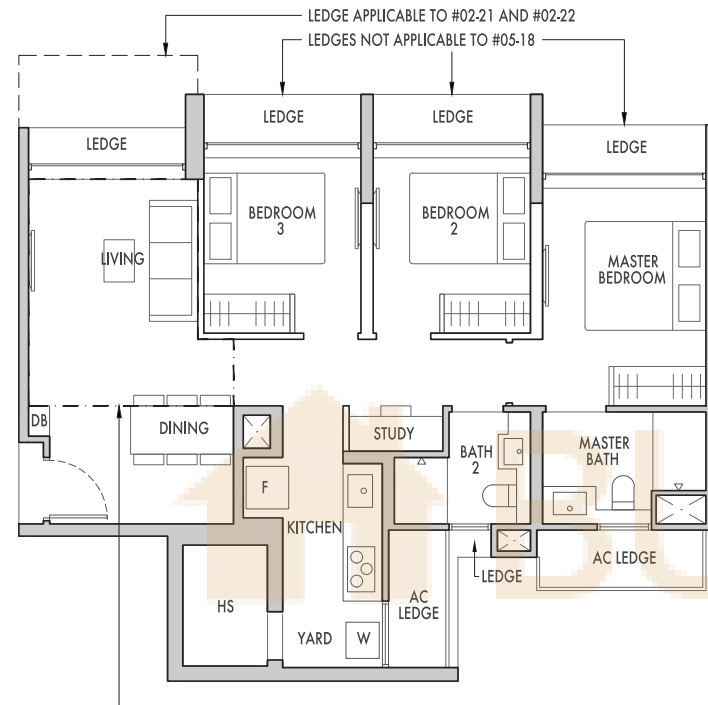
83 sqm (893 sqft)

**BLOCK 79**  
#05-18 to #14-18

**MIRRORED  
BLOCK 79**  
#05-17 to #14-17

**BLOCK 81**  
#02-22 to #14-22

**BLOCK 81**  
#02-21 to #14-21



## TYPE C1a (PH)

96 sqm (1033 sqft)

Strata void area of 13 sqm/ 140 sqft above Living with high volume ceiling of approx. 5.2m

**BLOCK 79**  
#15-18

**MIRRORED  
BLOCK 79**  
#15-17

**BLOCK 81**  
#15-22

**BLOCK 81**  
#15-21

DOTTED LINE DENOTES STRATA VOID ABOVE LIVING WHICH IS APPLICABLE TO C1a (PH)

### LEGEND

W - Washer F - Fridge

Area includes AC ledge, balcony, private enclosed space (PES) and strata void (where applicable). The above plans and illustrations are subject to change as may be required or approved by the relevant authorities. All floor areas are approximate only and subject to final survey. Please refer to key plan for orientation. Service voids and ledges are excluded from strata area. The balcony shall not be enclosed. Only approved balcony screen are to be used. For an illustration of the approved balcony screen, please refer to page 16 of this brochure.



SCALE



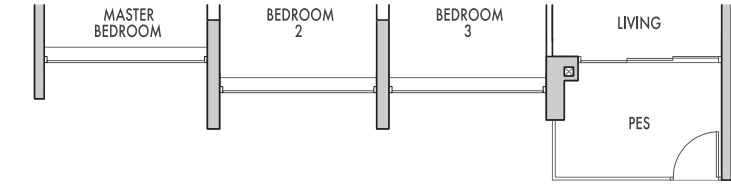
# 3 BEDROOM PREMIUM + STUDY

## TYPE C1b (p)

88 sqm (947 sqft)

**BLOCK 83**  
#01-28

**BLOCK 91**  
#01-44

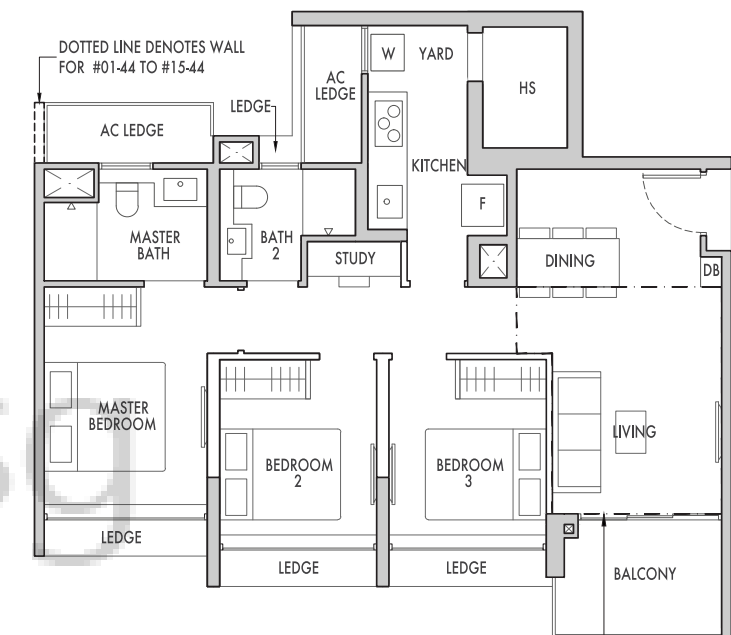


## TYPE C1b

88 sqm (947 sqft)

**BLOCK 83**  
#02-28 to #14-28

**BLOCK 91**  
#02-44 to #14-44



## TYPE C1b (PH)

100 sqm (1076 sqft)

Strata void area of 12 sqm/ 129 sqft above Living with high volume ceiling of approx. 5.2m

**BLOCK 83**  
#15-28

**BLOCK 91**  
#15-44

DOTTED LINE DENOTES STRATA VOID ABOVE LIVING WHICH IS APPLICABLE TO C1b (PH)

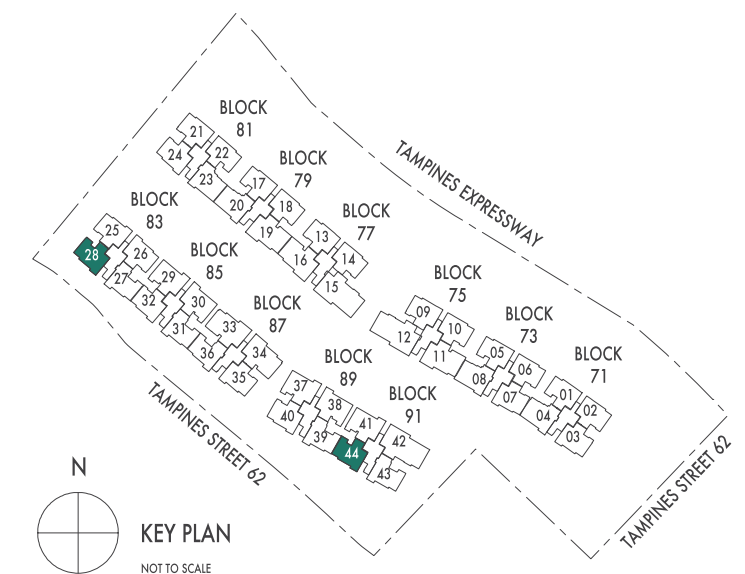
### LEGEND

W - Washer F - Fridge

Area includes AC ledge, balcony, private enclosed space (PES) and strata void (where applicable). The above plans and illustrations are subject to change as may be required or approved by the relevant authorities. All floor areas are approximate only and subject to final survey. Please refer to key plan for orientation. Service voids and ledges are excluded from strata area. The balcony shall not be enclosed. Only approved balcony screen are to be used. For an illustration of the approved balcony screen, please refer to page 16 of this brochure.



SCALE

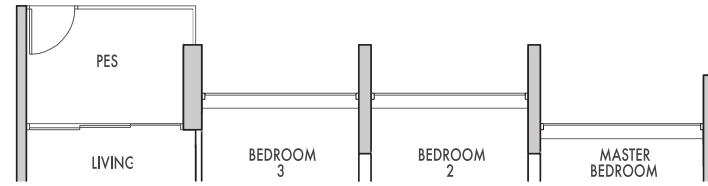


# 3 BEDROOM DELUXE + STUDY

## TYPE C2a (p)

91 sqm (980 sqft)

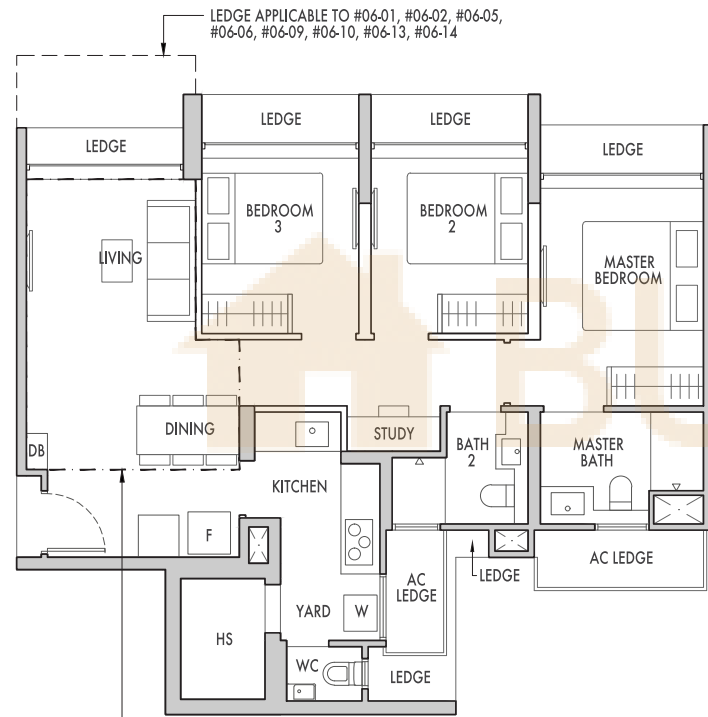
BLOCK	MIRRORED
BLOCK 71 #05-02	BLOCK 71 #05-01
BLOCK 73 #05-06	BLOCK 73 #05-05
BLOCK 75 #05-10	BLOCK 75 #05-09
BLOCK 77 #05-14	BLOCK 77 #05-13



## TYPE C2a

86 sqm (926 sqft)

BLOCK	MIRRORED
BLOCK 71 #06-02 to #14-02	BLOCK 71 #06-01 to #14-01
BLOCK 73 #06-06 to #14-06	BLOCK 73 #06-05 to #14-05
BLOCK 75 #06-10 to #14-10	BLOCK 75 #06-09 to #14-09
BLOCK 77 #06-14 to #14-14	BLOCK 77 #06-13 to #14-13



## TYPE C2a (PH)

102 sqm (1098 sqft)

Strata void area of 16 sqm/ 172 sqft above Living and Dining with high volume ceiling of approx. 5.2m

BLOCK	MIRRORED
BLOCK 71 #15-02	BLOCK 71 #15-01
BLOCK 73 #15-06	BLOCK 73 #15-05
BLOCK 75 #15-10	BLOCK 75 #15-09
BLOCK 77 #15-14	BLOCK 77 #15-13

DOTTED LINE DENOTES STRATA VOID ABOVE LIVING AND DINING WHICH IS APPLICABLE TO C2a (PH)

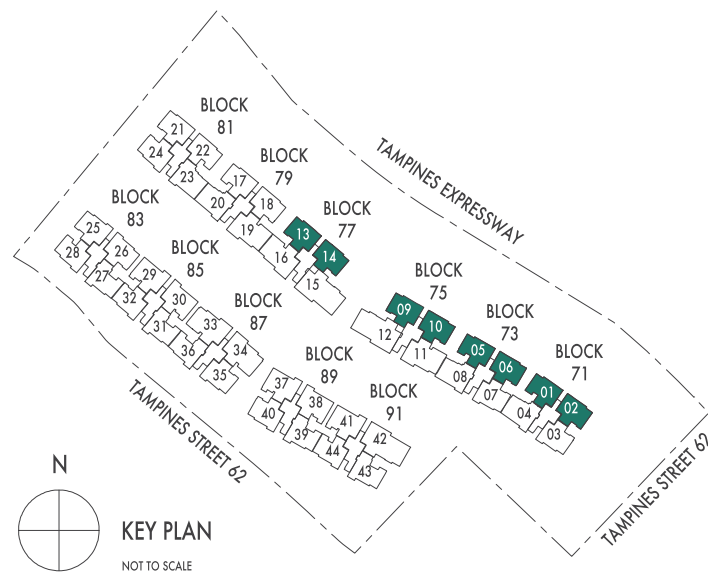
### LEGEND

W - Washer F - Fridge

Area includes AC ledge, balcony, private enclosed space (PES) and strata void (where applicable). The above plans and illustrations are subject to change as may be required or approved by the relevant authorities. All floor areas are approximate only and subject to final survey. Please refer to key plan for orientation. Service voids and ledges are excluded from strata area. The balcony shall not be enclosed. Only approved balcony screen are to be used. For an illustration of the approved balcony screen, please refer to page 16 of this brochure.



SCALE

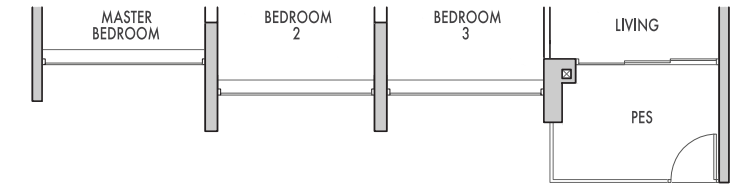


# 3 BEDROOM PREMIUM + STUDY

## TYPE C2b (p)

91 sqm (980 sqft)

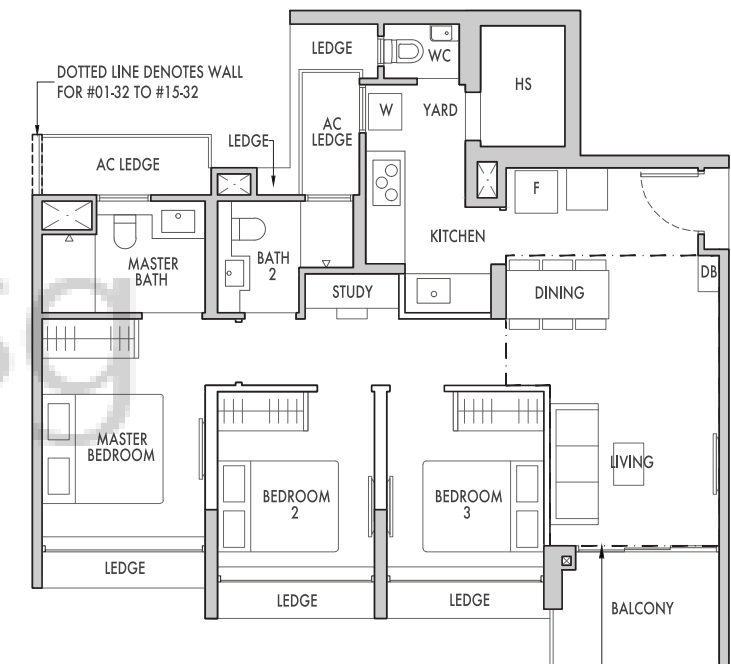
BLOCK	MIRRORED
BLOCK 81 #01-24	BLOCK 73 #01-07
BLOCK 83 #01-26	BLOCK 83 #01-25
BLOCK 85 #01-32	BLOCK 87 #01-35
BLOCK 89 #01-40	



## TYPE C2b

91 sqm (980 sqft)

BLOCK	MIRRORED
BLOCK 81 #02-24 to #14-24	BLOCK 71 #03-03 to #14-03
BLOCK 83 #02-26 to #14-26	BLOCK 73 #02-07 to #14-07
BLOCK 85 #02-32 to #14-32	BLOCK 83 #02-25 to #14-25
BLOCK 89 #02-40 to #14-40	BLOCK 87 #02-35 to #14-35



DOTTED LINE DENOTES STRATA VOID ABOVE LIVING AND DINING WHICH IS APPLICABLE TO C2b (PH)

## TYPE C2b (PH)

107 sqm (1152 sqft)

Strata void area of 16 sqm/ 172 sqft above Living and Dining with high volume ceiling of approx. 5.2m

BLOCK	MIRRORED
BLOCK 81 #15-24	BLOCK 71 #15-03
BLOCK 83 #15-26	BLOCK 73 #15-07
BLOCK 85 #15-32	BLOCK 83 #15-25
BLOCK 89 #15-40	BLOCK 87 #15-35

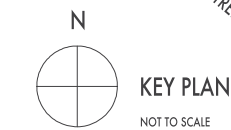
### LEGEND

W - Washer F - Fridge

Area includes AC ledge, balcony, private enclosed space (PES) and strata void (where applicable). The above plans and illustrations are subject to change as may be required or approved by the relevant authorities. All floor areas are approximate only and subject to final survey. Please refer to key plan for orientation. Service voids and ledges are excluded from strata area. The balcony shall not be enclosed. Only approved balcony screen are to be used. For an illustration of the approved balcony screen, please refer to page 16 of this brochure.



SCALE

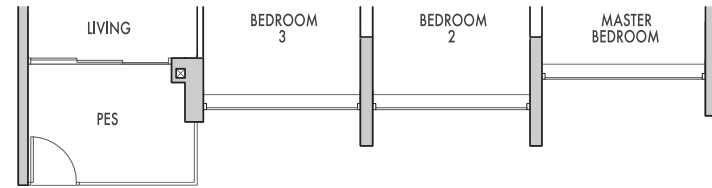


# 3 BEDROOM PREMIUM + STUDY

## TYPE C3 (p)

89 sqm (958 sqft)

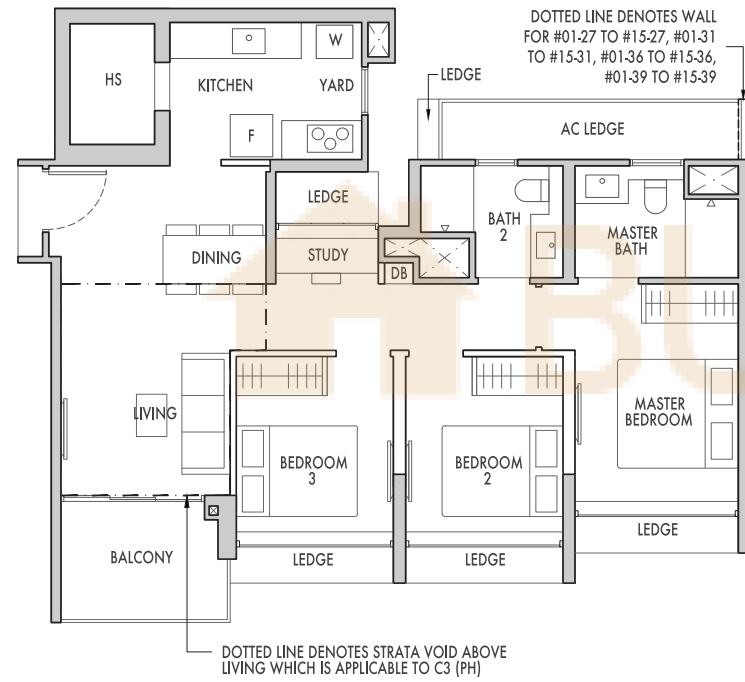
- |                           |                           |
|---------------------------|---------------------------|
| <b>BLOCK 83</b><br>#01-27 | <b>MIRRORED</b>           |
| <b>BLOCK 85</b><br>#01-31 | <b>BLOCK 87</b><br>#01-36 |
| <b>BLOCK 89</b><br>#01-39 |                           |
| <b>BLOCK 91</b><br>#01-43 |                           |



## TYPE C3

89 sqm (958 sqft)

- |                                     |                                     |
|-------------------------------------|-------------------------------------|
| <b>BLOCK 83</b><br>#02-27 to #14-27 | <b>MIRRORED</b>                     |
| <b>BLOCK 85</b><br>#02-31 to #14-31 | <b>BLOCK 87</b><br>#02-36 to #14-36 |
| <b>BLOCK 89</b><br>#02-39 to #14-39 |                                     |
| <b>BLOCK 91</b><br>#02-43 to #14-43 |                                     |



## TYPE C3 (PH)

100 sqm (1076 sqft)

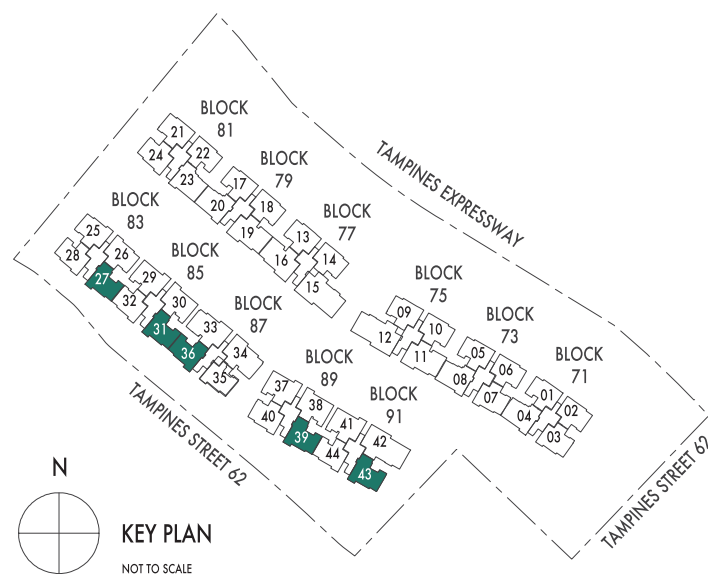
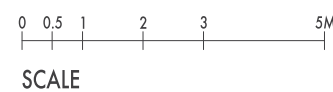
Strata void area of 11 sqm/ 118 sqft above Living with high volume ceiling of approx. 5.2m

- |                           |                           |
|---------------------------|---------------------------|
| <b>BLOCK 83</b><br>#15-27 | <b>MIRRORED</b>           |
| <b>BLOCK 85</b><br>#15-31 | <b>BLOCK 87</b><br>#15-36 |
| <b>BLOCK 89</b><br>#15-39 |                           |
| <b>BLOCK 91</b><br>#15-43 |                           |

### LEGEND

W - Washer F - Fridge

Area includes AC ledge, balcony, private enclosed space (PES) and strata void (where applicable). The above plans and illustrations are subject to change as may be required or approved by the relevant authorities. All floor areas are approximate only and subject to final survey. Please refer to key plan for orientation. Service voids and ledges are excluded from strata area. The balcony shall not be enclosed. Only approved balcony screen are to be used. For an illustration of the approved balcony screen, please refer to page 16 of this brochure.

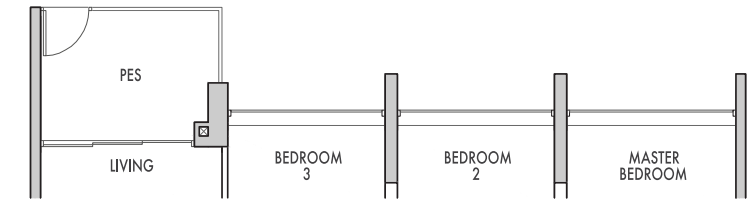


# 4 BEDROOM DELUXE

## TYPE D1 (p)

102 sqm (1098 sqft)

- |                           |                           |
|---------------------------|---------------------------|
| <b>BLOCK 85</b><br>#01-30 | <b>MIRRORED</b>           |
| <b>BLOCK 87</b><br>#01-34 | <b>BLOCK 85</b><br>#01-29 |
| <b>BLOCK 89</b><br>#01-38 | <b>BLOCK 89</b><br>#01-37 |
|                           | <b>BLOCK 91</b><br>#01-41 |



## TYPE D1

102 sqm (1098 sqft)

- |                                     |                                     |
|-------------------------------------|-------------------------------------|
| <b>BLOCK 85</b><br>#02-30 to #14-30 | <b>MIRRORED</b>                     |
| <b>BLOCK 87</b><br>#02-34 to #14-34 | <b>BLOCK 85</b><br>#02-29 to #14-29 |
| <b>BLOCK 89</b><br>#02-38 to #14-38 | <b>BLOCK 89</b><br>#02-37 to #14-37 |
|                                     | <b>BLOCK 91</b><br>#02-41 to #14-41 |

## TYPE D1 (PH)

118 sqm (1270 sqft)

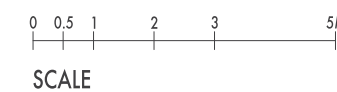
Strata void area of 16 sqm/ 172 sqft above Living and Dining with high volume ceiling of approx. 5.2m

- |                           |                           |
|---------------------------|---------------------------|
| <b>BLOCK 85</b><br>#15-30 | <b>MIRRORED</b>           |
| <b>BLOCK 87</b><br>#15-34 | <b>BLOCK 85</b><br>#15-29 |
| <b>BLOCK 89</b><br>#15-38 | <b>BLOCK 89</b><br>#15-37 |
|                           | <b>BLOCK 91</b><br>#15-41 |

### LEGEND

W - Washer F - Fridge

Area includes AC ledge, balcony, private enclosed space (PES) and strata void (where applicable). The above plans and illustrations are subject to change as may be required or approved by the relevant authorities. All floor areas are approximate only and subject to final survey. Please refer to key plan for orientation. Service voids and ledges are excluded from strata area. The balcony shall not be enclosed. Only approved balcony screen are to be used. For an illustration of the approved balcony screen, please refer to page 16 of this brochure.



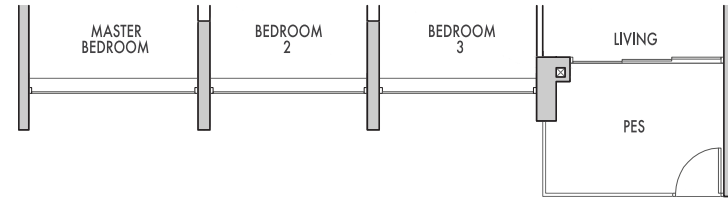
# 4 BEDROOM DELUXE

## TYPE D2 (p)

103 sqm (1109 sqft)

**BLOCK 71**  
#01-04  
**BLOCK 73**  
#01-08  
**BLOCK 79**  
#01-20

**MIRRORED  
BLOCK 81**  
#01-23

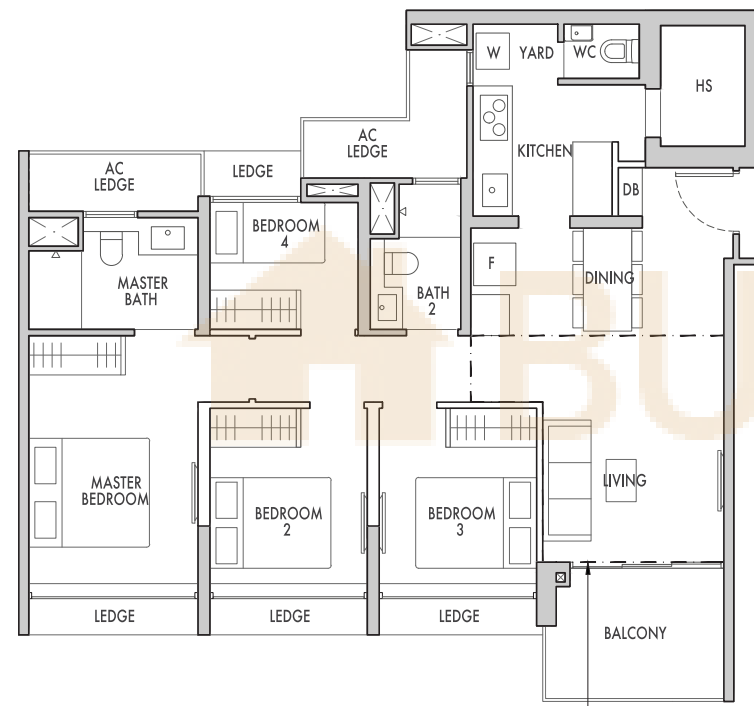


## TYPE D2

103 sqm (1109 sqft)

**BLOCK 71**  
#02-04 to #14-04  
**BLOCK 73**  
#02-08 to #14-08  
**BLOCK 79**  
#02-20 to #14-20

**MIRRORED  
BLOCK 81**  
#02-23 to #14-23



## TYPE D2 (PH)

117 sqm (1259 sqft)

Strata void area of 14 sqm/ 150 sqft above Living with high volume ceiling of approx. 5.2m

**BLOCK 71**  
#15-04  
**BLOCK 73**  
#15-08  
**BLOCK 79**  
#15-20

**MIRRORED  
BLOCK 81**  
#15-23

DOTTED LINE DENOTES STRATA VOID ABOVE LIVING WHICH IS APPLICABLE TO D2 (PH)

### LEGEND

W - Washer F - Fridge

Area includes AC ledge, balcony, private enclosed space (PES) and strata void (where applicable). The above plans and illustrations are subject to change as may be required or approved by the relevant authorities. All floor areas are approximate only and subject to final survey. Please refer to key plan for orientation. Service voids and ledges are excluded from strata area. The balcony shall not be enclosed. Only approved balcony screen are to be used. For an illustration of the approved balcony screen, please refer to page 16 of this brochure.



SCALE



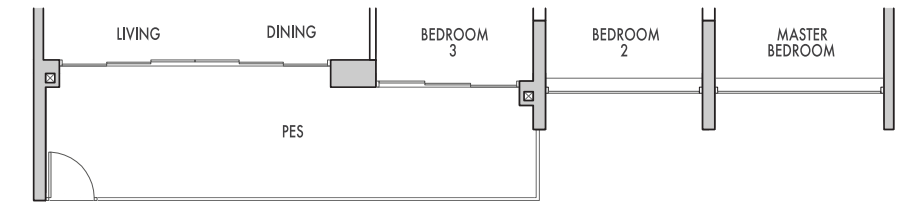
# 4 BEDROOM PREMIUM + STUDY

## TYPE D3 (p)

127 sqm (1367 sqft)

**BLOCK 75**  
#01-11  
**BLOCK 79**  
#01-19  
**BLOCK 87**  
#01-33

**MIRRORED  
BLOCK 77**  
#01-16

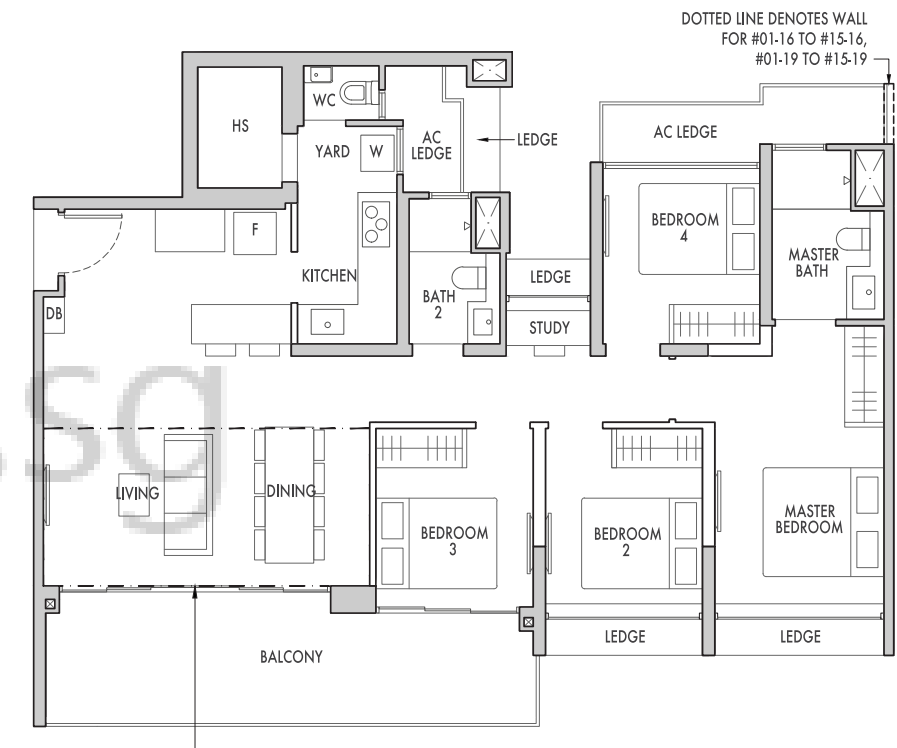


## TYPE D3

127 sqm (1367 sqft)

**BLOCK 75**  
#02-11 to #14-11  
**BLOCK 79**  
#02-19 to #14-19  
**BLOCK 87**  
#02-33 to #14-33

**MIRRORED  
BLOCK 77**  
#02-16 to #14-16



DOTTED LINE DENOTES STRATA VOID ABOVE LIVING AND DINING WHICH IS APPLICABLE TO D3 (PH)

## TYPE D3 (PH)

141sqm (1518 sqft)

Strata void area of 14 sqm/ 151 sqft above Living and Dining with high volume ceiling of approx. 5.2m

**BLOCK 75**  
#15-11  
**BLOCK 79**  
#15-19  
**BLOCK 87**  
#15-33

**MIRRORED  
BLOCK 77**  
#15-16

### LEGEND

W - Washer F - Fridge

Area includes AC ledge, balcony, private enclosed space (PES) and strata void (where applicable). The above plans and illustrations are subject to change as may be required or approved by the relevant authorities. All floor areas are approximate only and subject to final survey. Please refer to key plan for orientation. Service voids and ledges are excluded from strata area. The balcony shall not be enclosed. Only approved balcony screen are to be used. For an illustration of the approved balcony screen, please refer to page 16 of this brochure.



SCALE

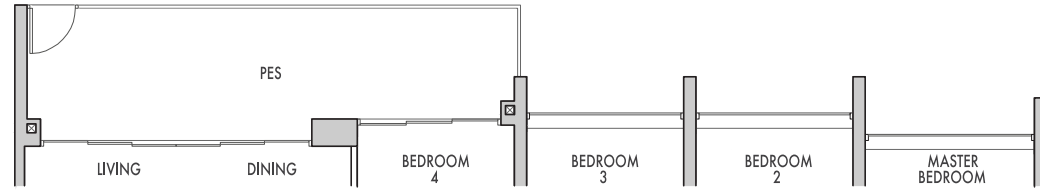


**5  
BEDROOM  
PREMIUM  
+ STUDY**

**TYPE E1a (p)**

145 sqm (1561 sqft)

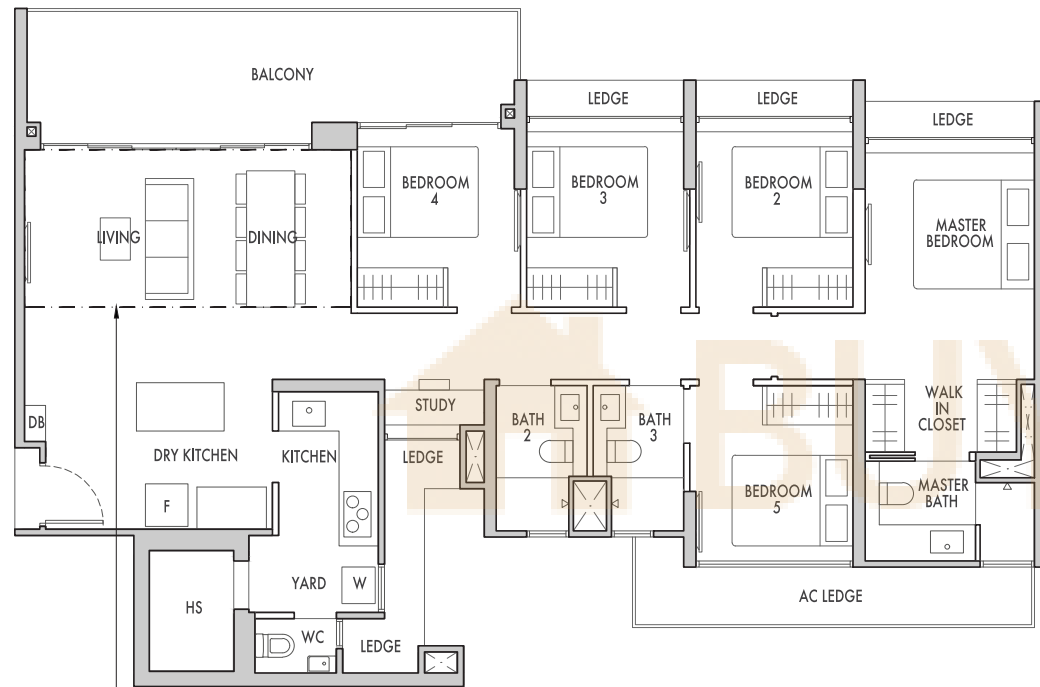
**BLOCK 91**  
#01-42



**TYPE E1a**

145 sqm (1561 sqft)

**BLOCK 91**  
#02-42 to #14-42



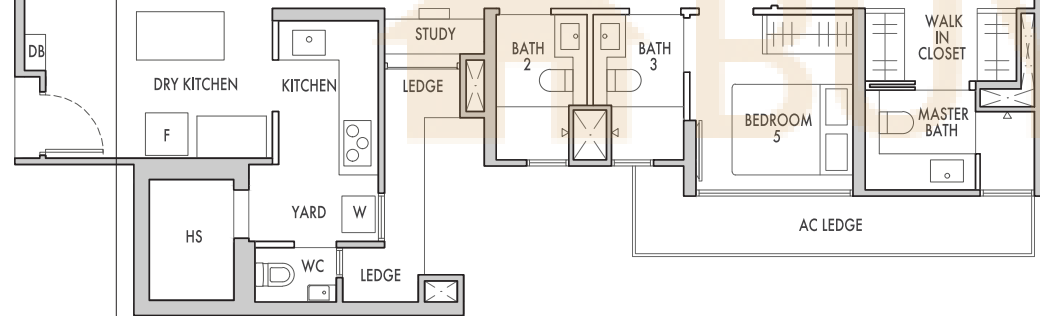
DOTTED LINE DENOTES STRATA VOID ABOVE LIVING AND DINING WHICH IS APPLICABLE TO E1a (PH)

**TYPE E1a (PH)**

159 sqm (1711 sqft)

Strata void area of 14 sqm/ 150 sqft above Living and Dining with high volume ceiling of approx. 5.2m

**BLOCK 91**  
#15-42



DOTTED LINE DENOTES STRATA VOID ABOVE LIVING AND DINING WHICH IS APPLICABLE TO E1a (PH)

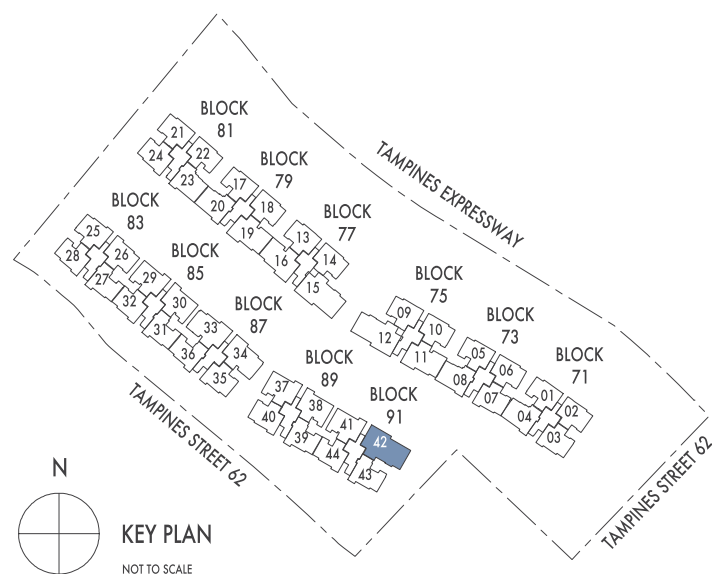
**LEGEND**

W - Washer F - Fridge

Area includes AC ledge, balcony, private enclosed space (PES) and strata void (where applicable). The above plans and illustrations are subject to change as may be required or approved by the relevant authorities. All floor areas are approximate only and subject to final survey. Please refer to key plan for orientation. Service voids and ledges are excluded from strata area. The balcony shall not be enclosed. Only approved balcony screen are to be used. For an illustration of the approved balcony screen, please refer to page 16 of this brochure.



SCALE



**KEY PLAN**  
NOT TO SCALE

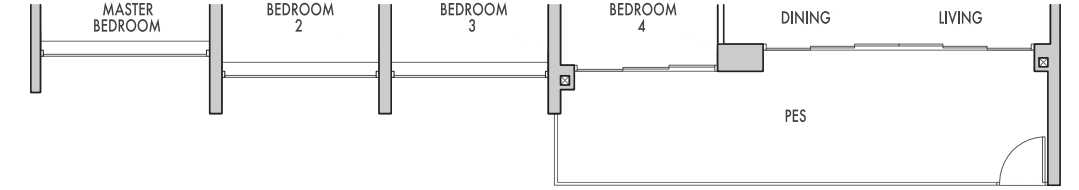
**5  
BEDROOM  
PREMIUM  
+ STUDY**

**TYPE E1b (p)**

146 sqm (1572 sqft)

**BLOCK 75**  
#01-12

**MIRRORED  
BLOCK 77**  
#01-15

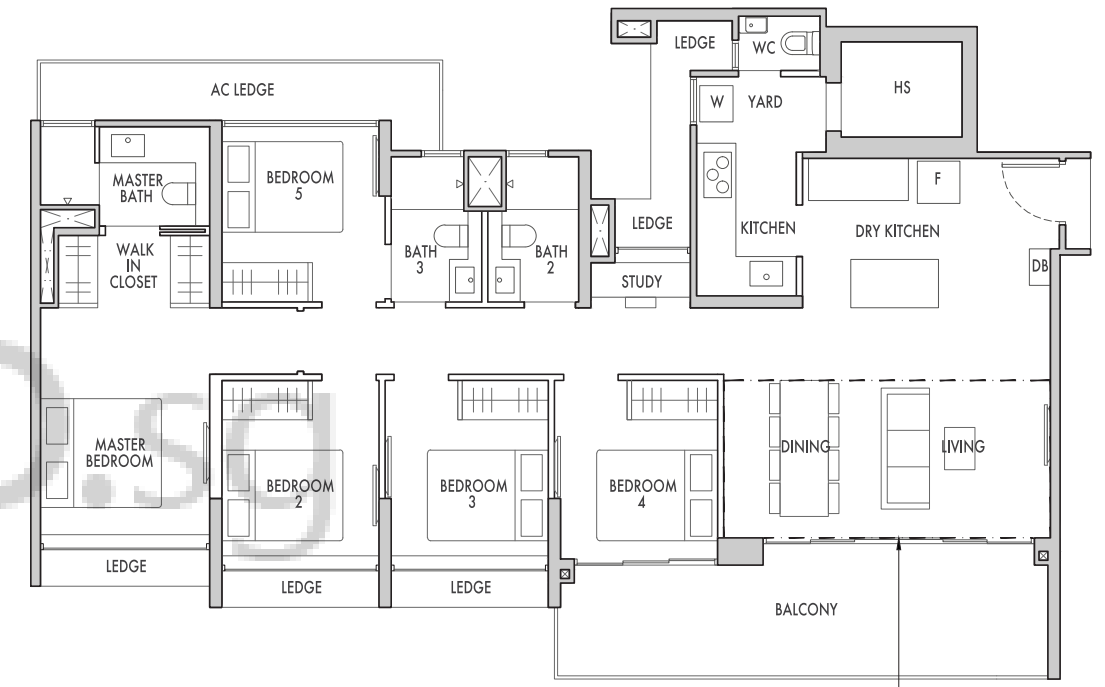


**TYPE E1b**

146 sqm (1572 sqft)

**BLOCK 75**  
#02-12 to #14-12

**MIRRORED  
BLOCK 77**  
#02-15 to #14-15



DOTTED LINE DENOTES STRATA VOID ABOVE LIVING AND DINING WHICH IS APPLICABLE TO E1b (PH)

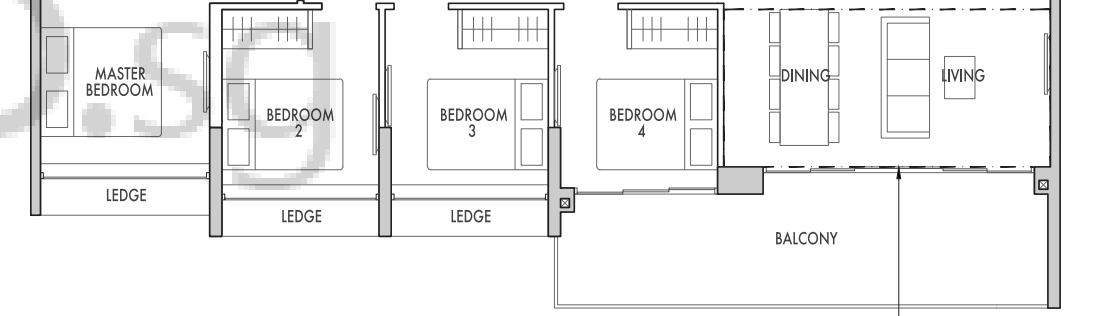
**TYPE E1b (PH)**

160 sqm (1722 sqft)

Strata void area of 14 sqm/ 150 sqft above Living and Dining with high volume ceiling of approx. 5.2m

**BLOCK 75**  
#15-12

**MIRRORED  
BLOCK 77**  
#15-15



DOTTED LINE DENOTES STRATA VOID ABOVE LIVING AND DINING WHICH IS APPLICABLE TO E1b (PH)

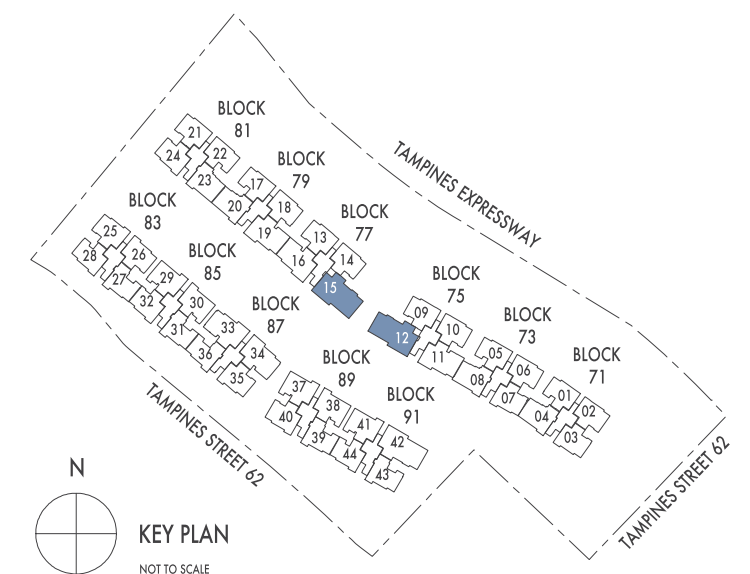
**LEGEND**

W - Washer F - Fridge

Area includes AC ledge, balcony, private enclosed space (PES) and strata void (where applicable). The above plans and illustrations are subject to change as may be required or approved by the relevant authorities. All floor areas are approximate only and subject to final survey. Please refer to key plan for orientation. Service voids and ledges are excluded from strata area. The balcony shall not be enclosed. Only approved balcony screen are to be used. For an illustration of the approved balcony screen, please refer to page 16 of this brochure.



SCALE



**KEY PLAN**  
NOT TO SCALE