

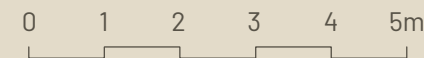
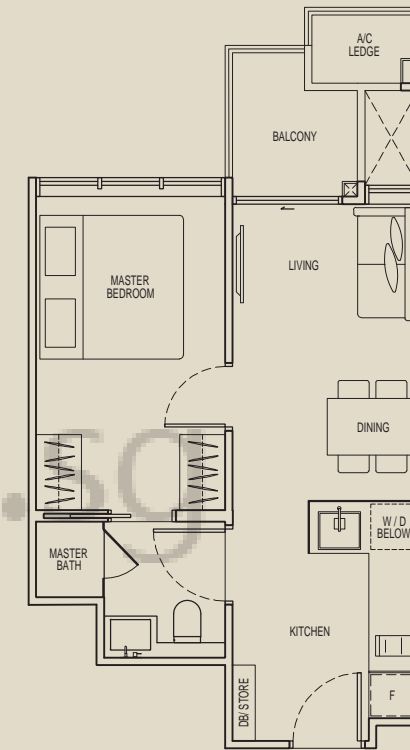
# UNIT DISTRIBUTION

	ROOF TERRACE	SWIMMING POOL				LIFT/STAIRCASE	ROOF TERRACE WITH COMMUNAL FACILITIES			
10TH	B1	A1	A2	A2	B2		C1	A3	A3	B3
9TH	B1	A1	A2	A2	B2		C1	A3	A3	B3
8TH	B1	A1	A2	A2	B2		C1	A3	A3	B3
7TH	B1	A1	A2	A2	B2		C1	A3	A3	B3
6TH	B1	A1	A2	A2	B2		C1	A3	A3	B3
5TH	B1	A1	A2	A2	B2		C1	A3	A3	B3
4TH	B1	A1	A2	A2	B2		C1	A3	A3	B3
3RD	B1	A1	A2	A2	B2		C1	A3	A3	B3
2ND	SKY TERRACE WITH COMMUNAL FACILITIES						SKY TERRACE WITH COMMUNAL FACILITIES			
1ST	DROP OFF					CARPARK				
B1	CARPARK					CARPARK				
UPPER B2	CARPARK					CARPARK				
LOWER B2	CARPARK					CARPARK				

## TYPE A1 1 BEDROOM

AREA  
40 sqm (431 sqft)

#03-08 to #10-08



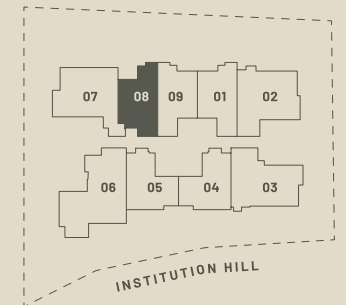
### LEGEND

- A/C Ledge : Air Conditioner Ledge
- DB : Distribution Board
- F : Fridge
- W/D : Washer Cum Dryer
- ⊠ : Services Void Space (excluded from strata area)



### 3RD TO 10TH STOREY

Key plan is not to scale:



- A** 1 / 1+1 BEDROOM
- B** 2 BEDROOM
- C** 3 BEDROOM

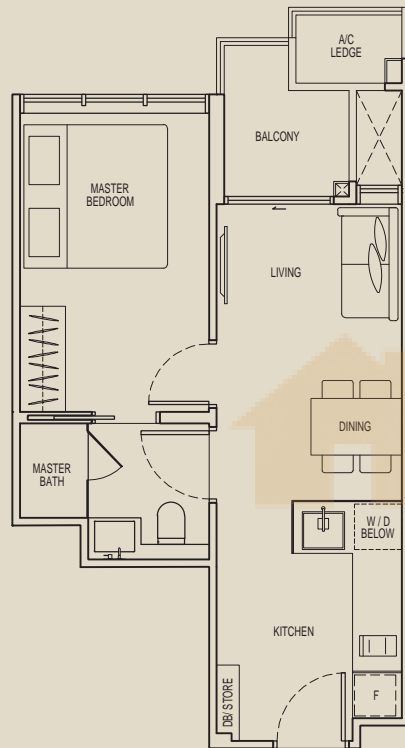
Note: All floor area include a/c ledge and balcony. All plans are not drawn to scale and subject to change as may be required or approved by the relevant authorities. All floor areas are approximate measurements only and are subject to final survey. The balcony shall not be enclosed except with the approved balcony screen. For an illustration of the approved balcony screen, please refer to diagram annexed hereto as "Annexure D". Master Bedroom and Bedroom 2 are provided with only one openable window panel to comply with noise control requirement for Unit Type A1, A2, B1 and B2. Opening restrictor to aluminium framed glass door to Balcony with 50% opening to comply with noise control requirement for Unit Type A1, A2, B1 and B2.

**TYPE A2  
1 BEDROOM**

**AREA**

40 sqm (431 sqft)

#03-01 to #10-01  
#03-09 to #10-09 (Mirrored)

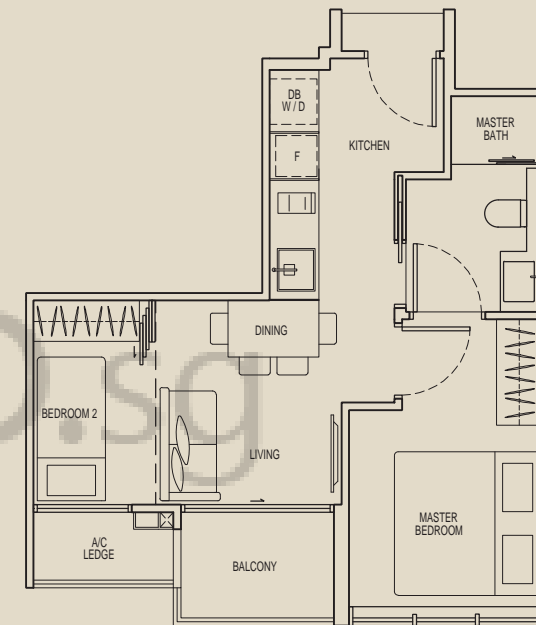


**TYPE A3  
1+1 BEDROOM**

**AREA**

42 sqm (452 sqft)

#03-04 to #10-04  
#03-05 to #10-05 (Mirrored)



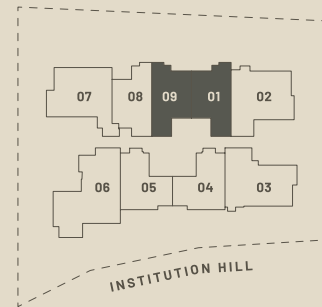
**LEGEND**

- A/C Ledge : Air Conditioner Ledge
- DB : Distribution Board
- F : Fridge
- W/D : Washer Cum Dryer
- ⊠ : Services Void Space (excluded from strata area)



**3RD TO 10TH STOREY**

Key plan is not to scale:



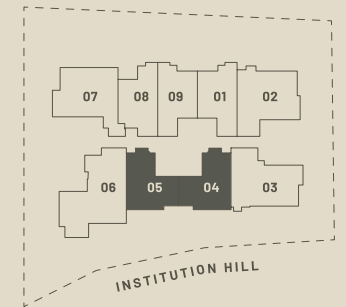
**LEGEND**

- A/C Ledge : Air Conditioner Ledge
- DB : Distribution Board
- F : Fridge
- W/D : Washer Cum Dryer
- ⊠ : Services Void Space (excluded from strata area)



**3RD TO 10TH STOREY**

Key plan is not to scale:



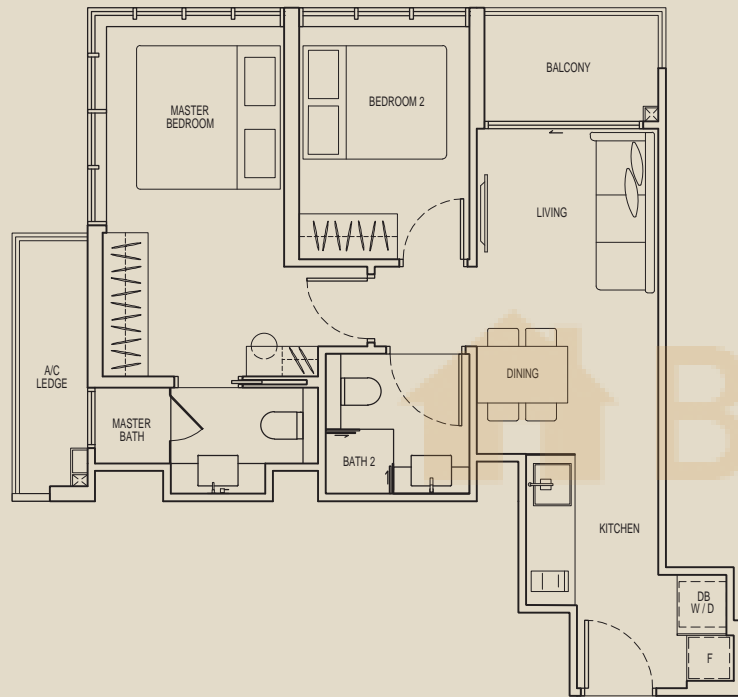
Note: All floor area include a/c ledge and balcony. All plans are not drawn to scale and subject to change as may be required or approved by the relevant authorities. All floor areas are approximate measurements only and are subject to final survey. The balcony shall not be enclosed except with the approved balcony screen. For an illustration of the approved balcony screen, please refer to diagram annexed hereto as "Annexure D". Master Bedroom and Bedroom 2 are provided with only one openable window panel to comply with noise control requirement for Unit Type A1, A2, B1 and B2. Opening restrictor to aluminium framed glass door to Balcony with 50% opening to comply with noise control requirement for Unit Type A1, A2, B1 and B2.

Note: All floor area include a/c ledge and balcony. All plans are not drawn to scale and subject to change as may be required or approved by the relevant authorities. All floor areas are approximate measurements only and are subject to final survey. The balcony shall not be enclosed except with the approved balcony screen. For an illustration of the approved balcony screen, please refer to diagram annexed hereto as "Annexure D". Master Bedroom and Bedroom 2 are provided with only one openable window panel to comply with noise control requirement for Unit Type A1, A2, B1 and B2. Opening restrictor to aluminium framed glass door to Balcony with 50% opening to comply with noise control requirement for Unit Type A1, A2, B1 and B2.

**TYPE B1  
2 BEDROOM**

**AREA**  
58 sqm (624 sqft)

#03-07 to #10-07



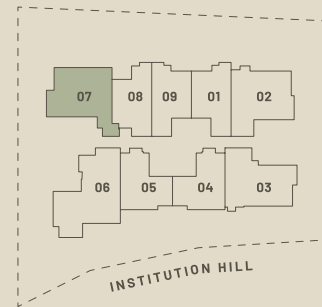
**3RD TO 10TH STOREY**

Key plan is not to scale:



**LEGEND**

- A/C Ledge : Air Conditioner Ledge
- DB : Distribution Board
- F : Fridge
- W/D : Washer Cum Dryer
- ⊠ : Services Void Space (excluded from strata area)

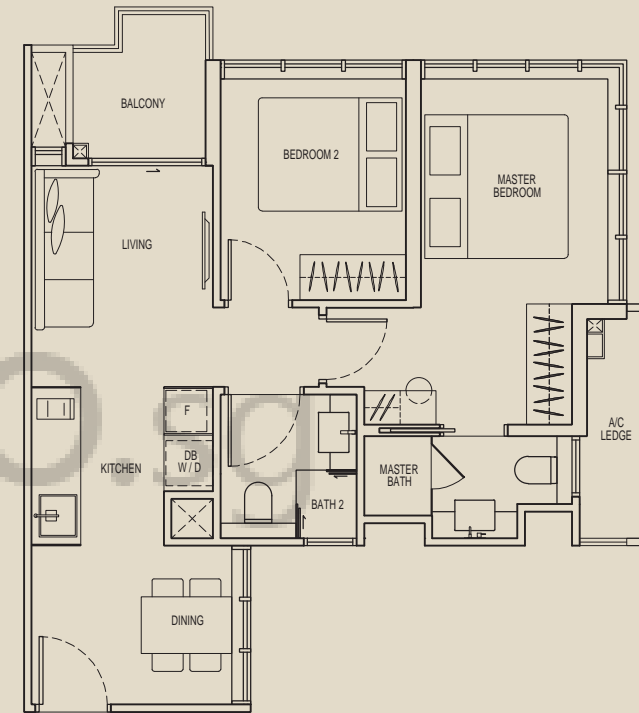


Note: All floor area include a/c ledge and balcony. All plans are not drawn to scale and subject to change as may be required or approved by the relevant authorities. All floor areas are approximate measurements only and are subject to final survey. The balcony shall not be enclosed except with the approved balcony screen. For an illustration of the approved balcony screen, please refer to diagram annexed hereto as "Annexure D". Master Bedroom and Bedroom 2 are provided with only one openable window panel to comply with noise control requirement for Unit Type A1, A2, B1 and B2. Opening restrictor to aluminium framed glass door to Balcony with 50% opening to comply with noise control requirement for Unit Type A1, A2, B1 and B2.

**TYPE B2  
2 BEDROOM**

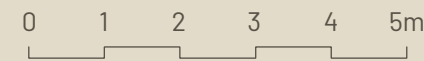
**AREA**  
58 sqm (624 sqft)

#03-02 to #10-02



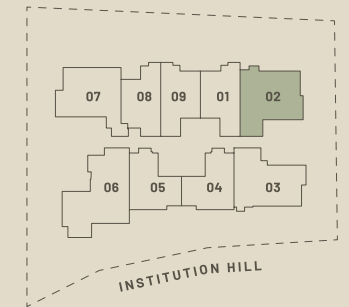
**3RD TO 10TH STOREY**

Key plan is not to scale:



**LEGEND**

- A/C Ledge : Air Conditioner Ledge
- DB : Distribution Board
- F : Fridge
- W/D : Washer Cum Dryer
- ⊠ : Services Void Space (excluded from strata area)



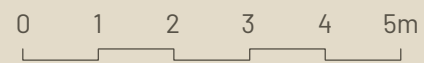
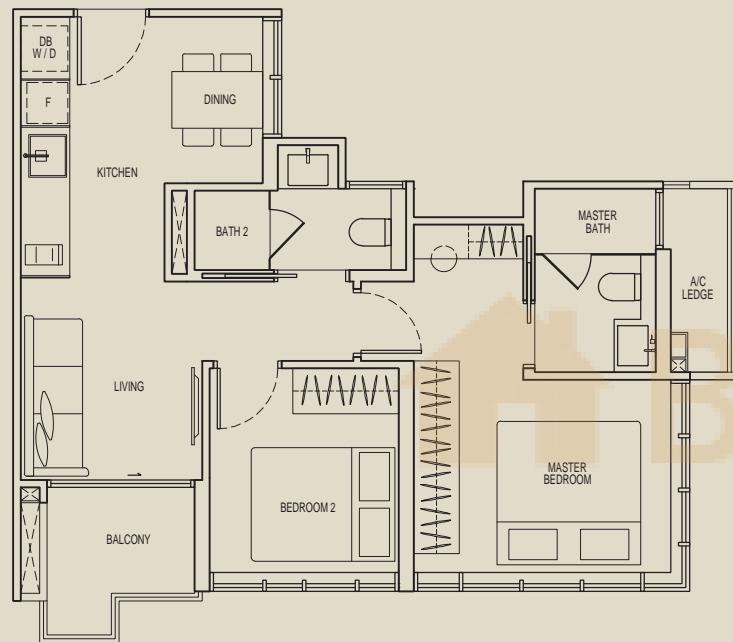
Note: All floor area include a/c ledge and balcony. All plans are not drawn to scale and subject to change as may be required or approved by the relevant authorities. All floor areas are approximate measurements only and are subject to final survey. The balcony shall not be enclosed except with the approved balcony screen. For an illustration of the approved balcony screen, please refer to diagram annexed hereto as "Annexure D". Master Bedroom and Bedroom 2 are provided with only one openable window panel to comply with noise control requirement for Unit Type A1, A2, B1 and B2. Opening restrictor to aluminium framed glass door to Balcony with 50% opening to comply with noise control requirement for Unit Type A1, A2, B1 and B2.

**TYPE B3  
2 BEDROOM**

**AREA**

58 sqm (624 sqft)

#03-03 to #10-03



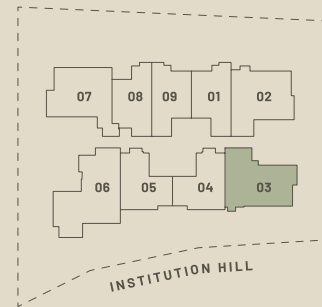
**LEGEND**

- A/C Ledge : Air Conditioner Ledge
- DB : Distribution Board
- F : Fridge
- W/D : Washer Cum Dryer
- ⊠ : Services Void Space (excluded from strata area)



**3RD TO 10TH STOREY**

Key plan is not to scale:



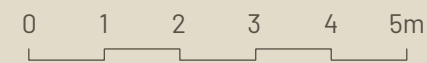
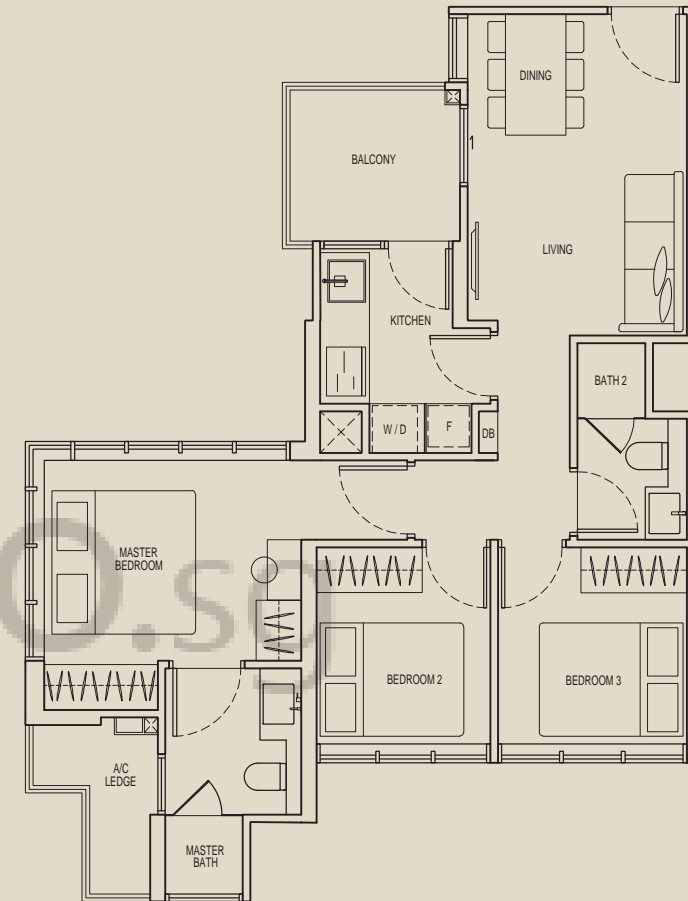
Note: All floor area include a/c ledge and balcony. All plans are not drawn to scale and subject to change as may be required or approved by the relevant authorities. All floor areas are approximate measurements only and are subject to final survey. The balcony shall not be enclosed except with the approved balcony screen. For an illustration of the approved balcony screen, please refer to diagram annexed hereto as "Annexure D". Master Bedroom and Bedroom 2 are provided with only one openable window panel to comply with noise control requirement for Unit Type A1, A2, B1 and B2. Opening restrictor to aluminium framed glass door to Balcony with 50% opening to comply with noise control requirement for Unit Type A1, A2, B1 and B2.

**TYPE C1  
3 BEDROOM**

**AREA**

70 sqm (753 sqft)

#03-06 to #10-06



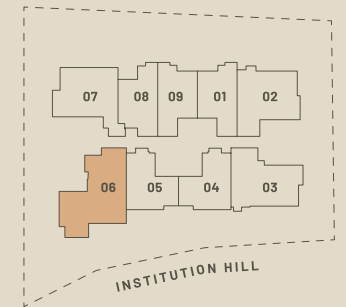
**LEGEND**

- A/C Ledge : Air Conditioner Ledge
- DB : Distribution Board
- F : Fridge
- W/D : Washer Cum Dryer
- ⊠ : Services Void Space (excluded from strata area)



**3RD TO 10TH STOREY**

Key plan is not to scale:



Note: All floor area include a/c ledge and balcony. All plans are not drawn to scale and subject to change as may be required or approved by the relevant authorities. All floor areas are approximate measurements only and are subject to final survey. The balcony shall not be enclosed except with the approved balcony screen. For an illustration of the approved balcony screen, please refer to diagram annexed hereto as "Annexure D". Master Bedroom and Bedroom 2 are provided with only one openable window panel to comply with noise control requirement for Unit Type A1, A2, B1 and B2. Opening restrictor to aluminium framed glass door to Balcony with 50% opening to comply with noise control requirement for Unit Type A1, A2, B1 and B2.