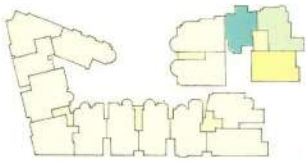
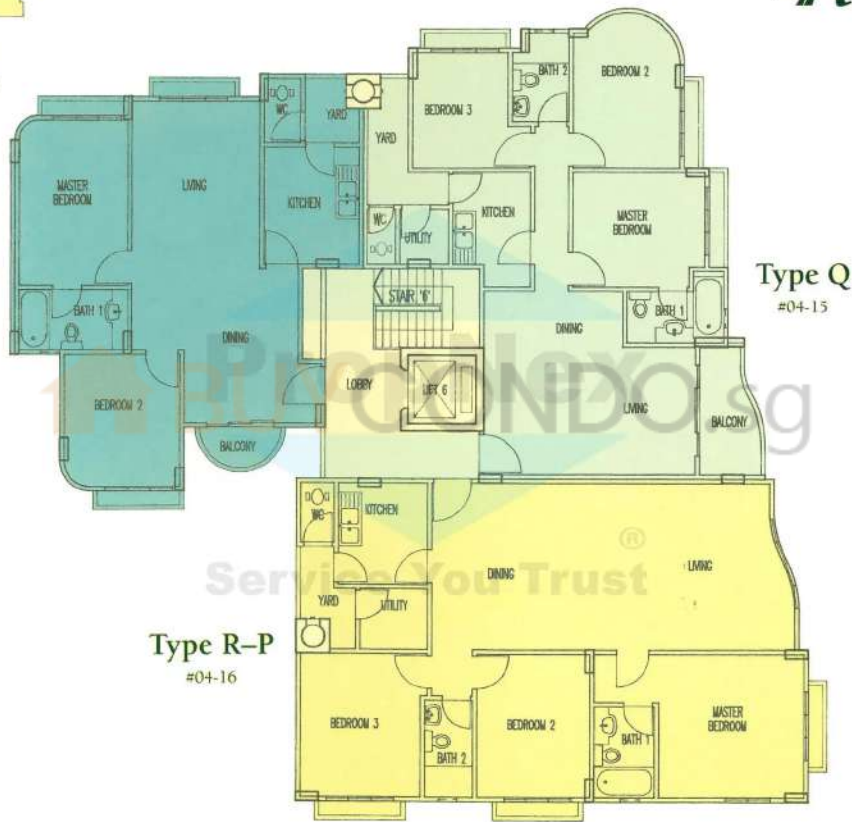


# 4th Storey



**Type P**  
#04-14

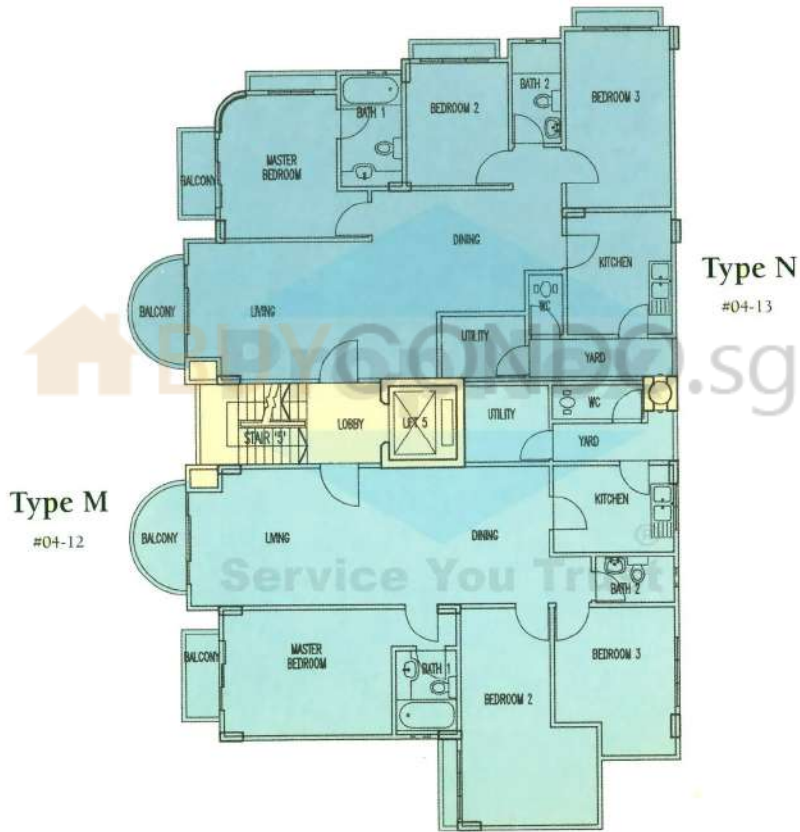
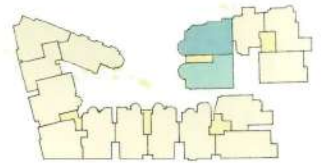


**Type Q**  
#04-15

**Type R-P**  
#04-16

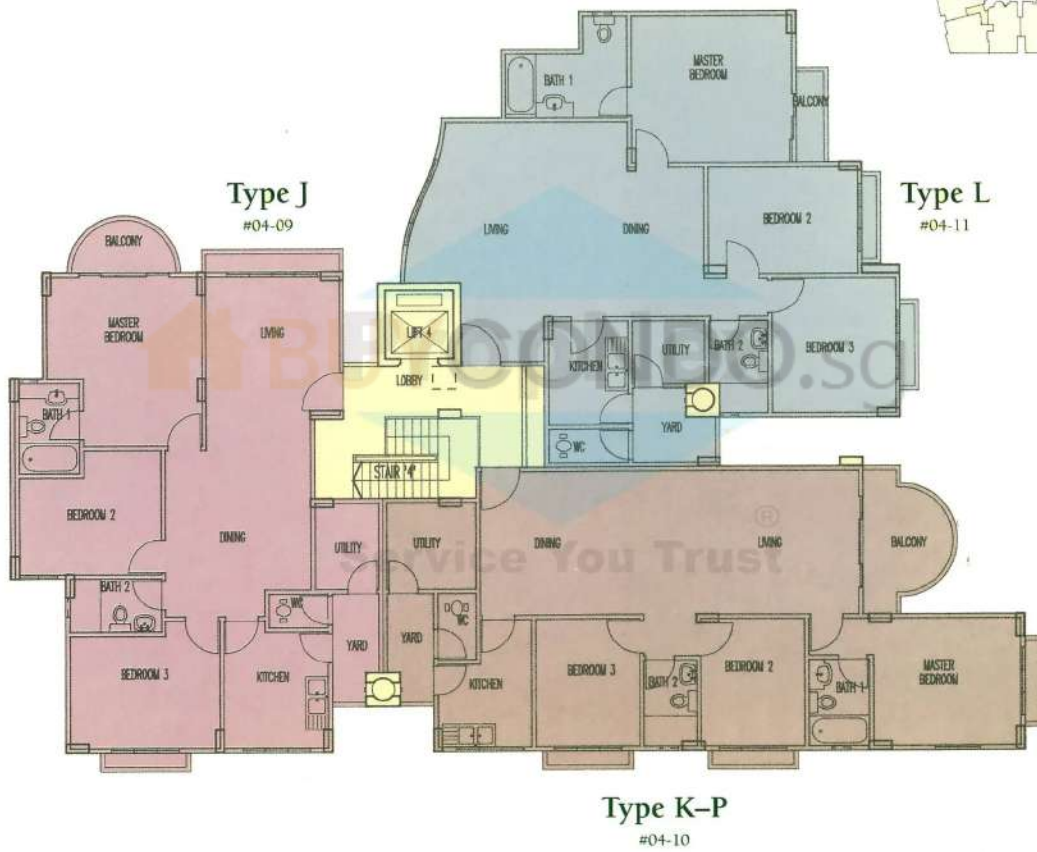
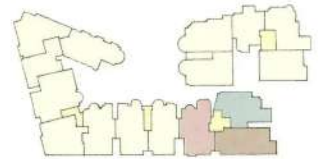
The above plan is subjected to any amendments as may be approved by the relevant Authorities.

# 4th Storey

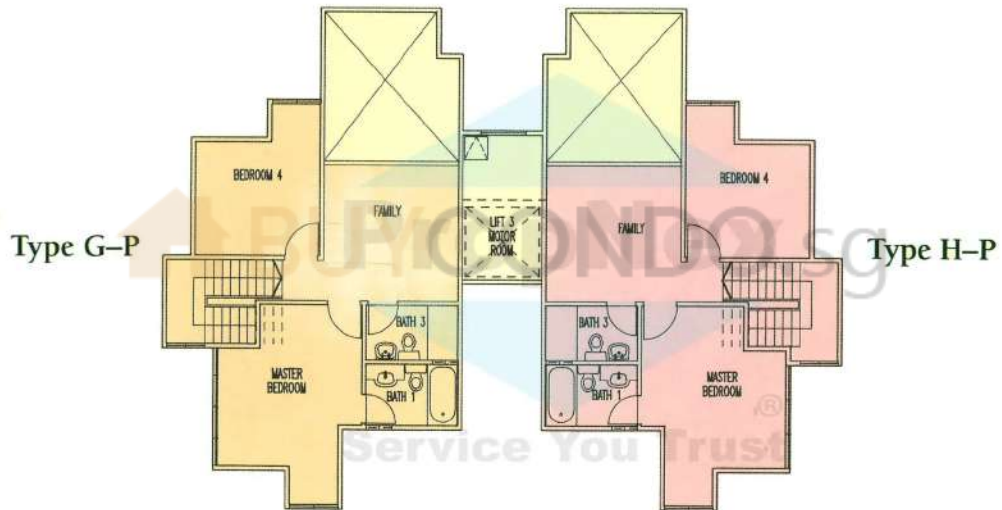


The above plan is subjected to any amendments as may be approved by the relevant Authorities.

# 4th Storey

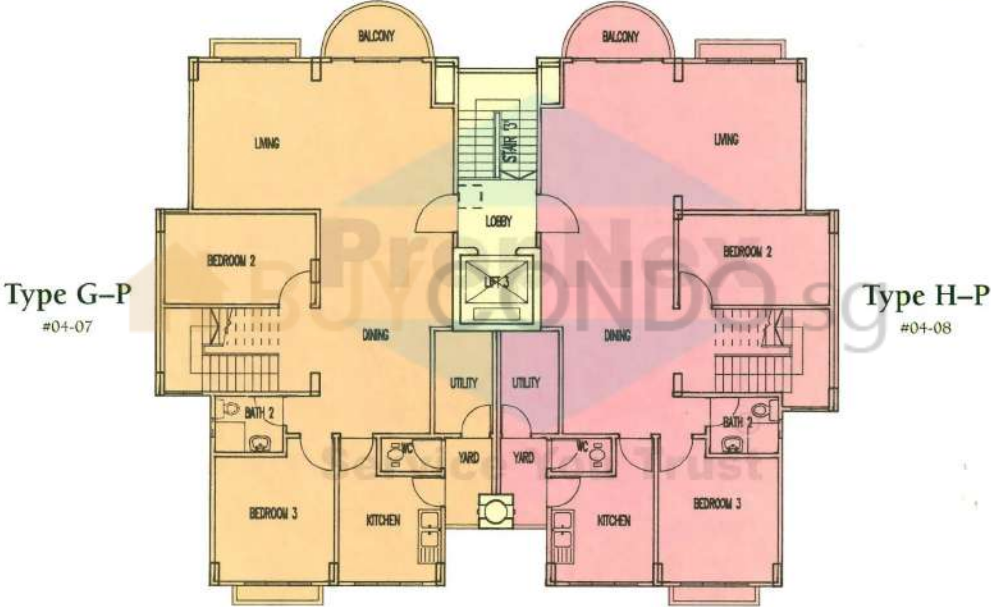
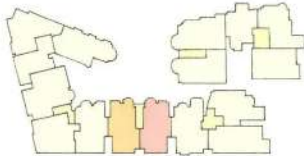


The above plan is subjected to any amendments as may be approved by the relevant Authorities.

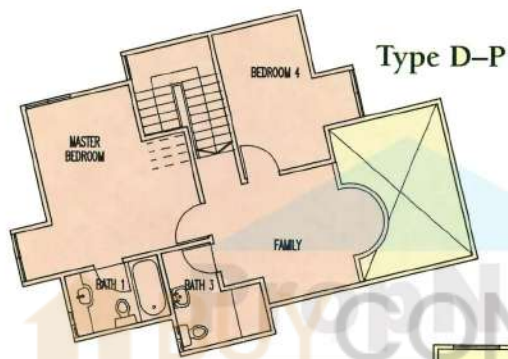


The above plan is subjected to any amendments as may be approved by the relevant Authorities.

# 4th Storey & Attic

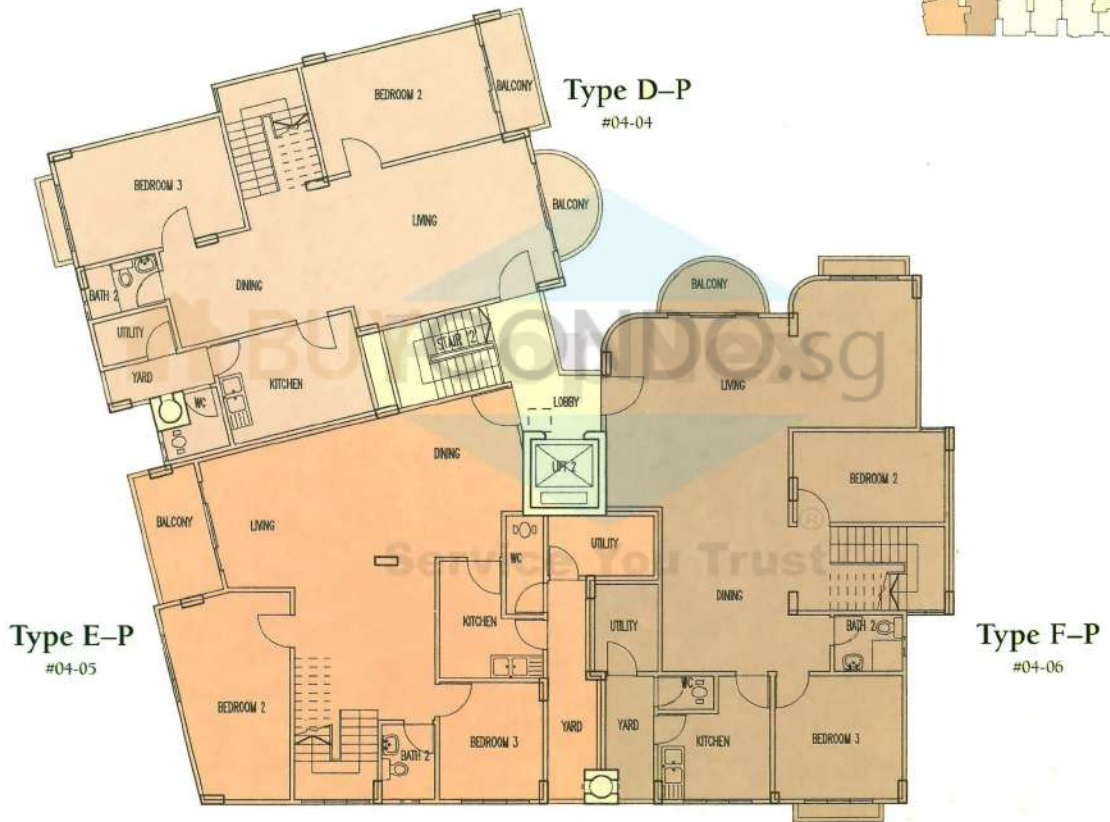
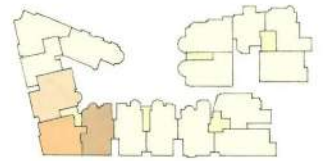


The above plan is subjected to any amendments as may be approved by the relevant Authorities.



The above plan is subjected to any amendments as may be approved by the relevant Authorities.

# 4th Storey & Attic

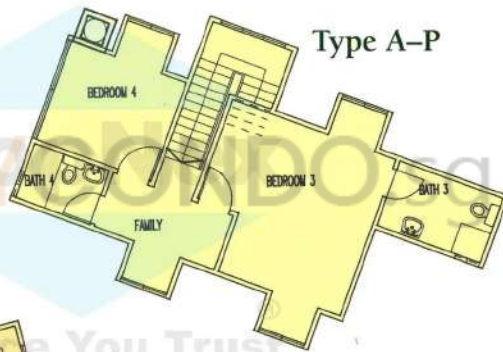


The above plan is subjected to any amendments as may be approved by the relevant Authorities.

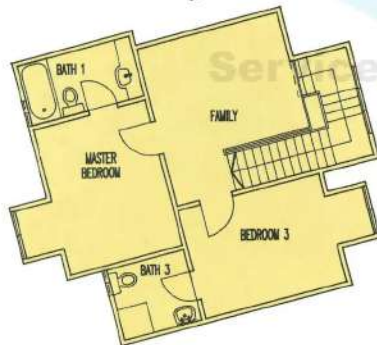
Type B-P



Type A-P



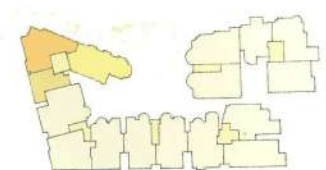
Type C-P



The above plan is subjected to any amendments as may be approved by the relevant Authorities.



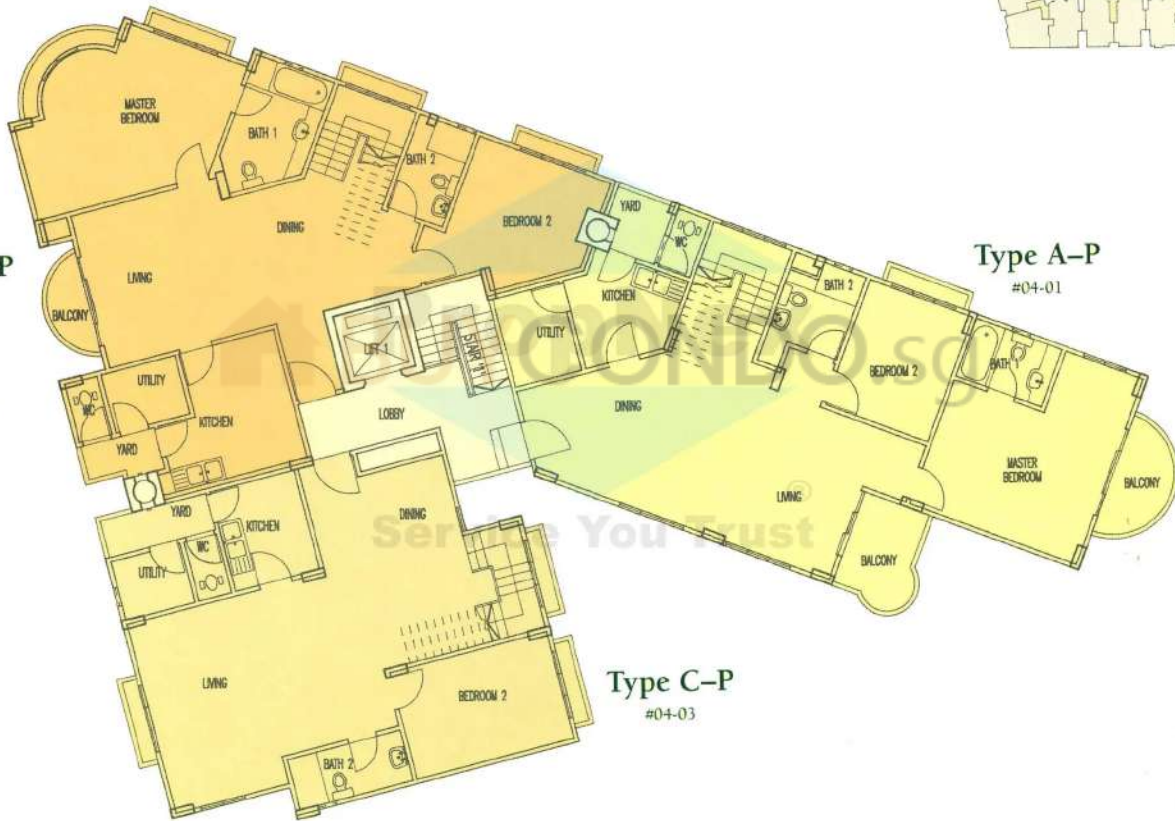
# 4th Storey & Attic



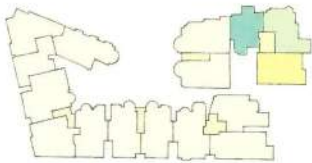
Type B-P  
#04-02

Type A-P  
#04-01

Type C-P  
#04-03

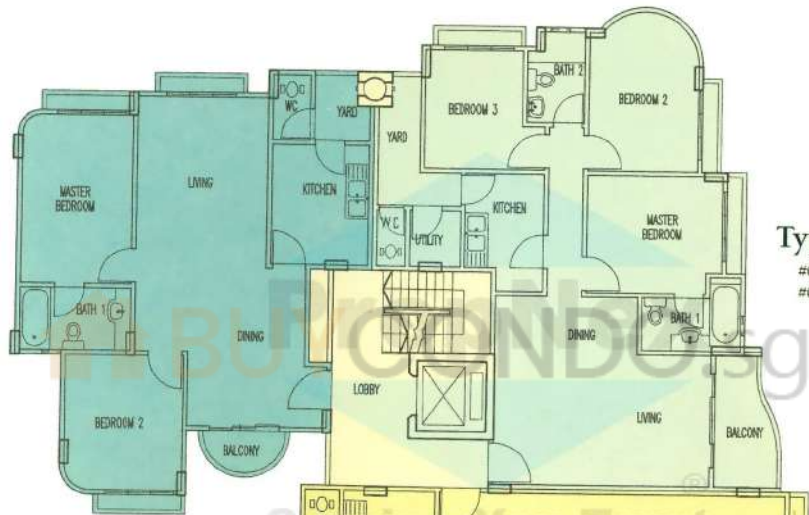


The above plan is subjected to any amendments as may be approved by the relevant Authorities.



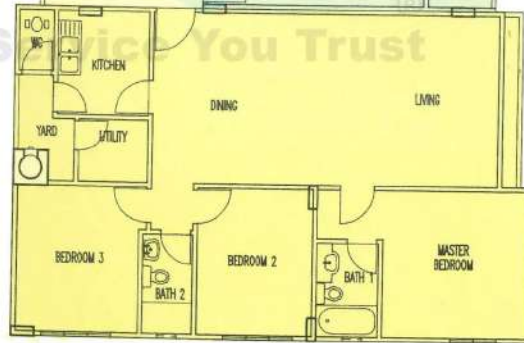
# 2nd / 3rd Storey

**Type P**  
#02-14  
#03-14



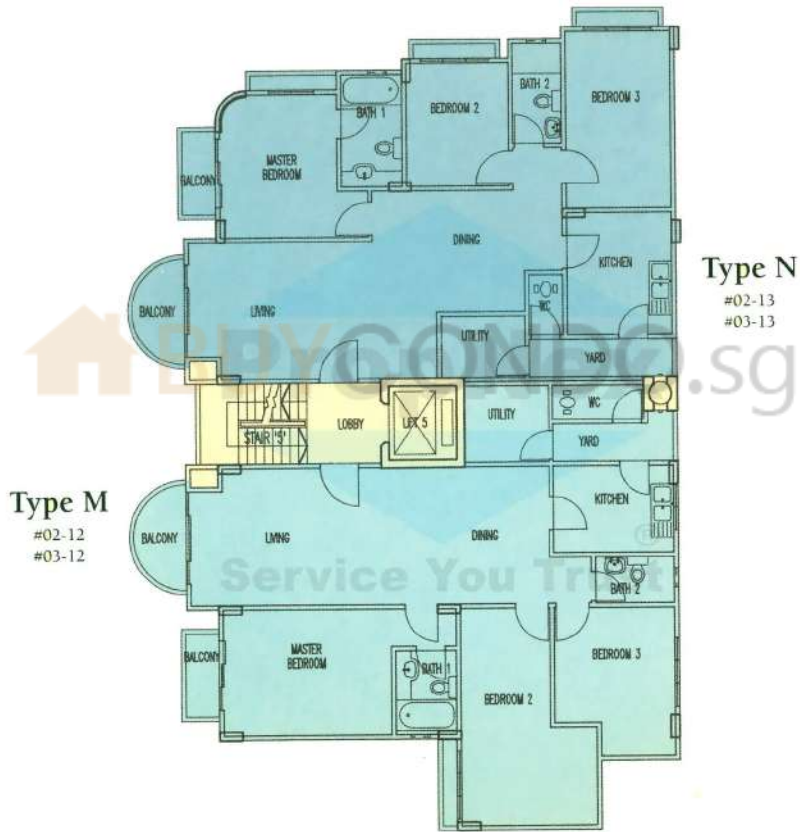
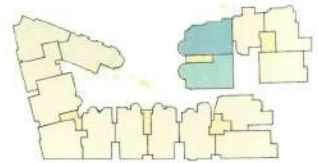
**Type Q**  
#02-15  
#03-15

**Type R**  
#02-16  
#03-16

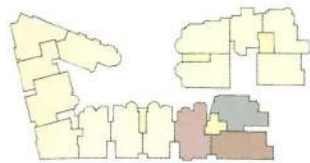


The above plan is subjected to any amendments as may be approved by the relevant Authorities.

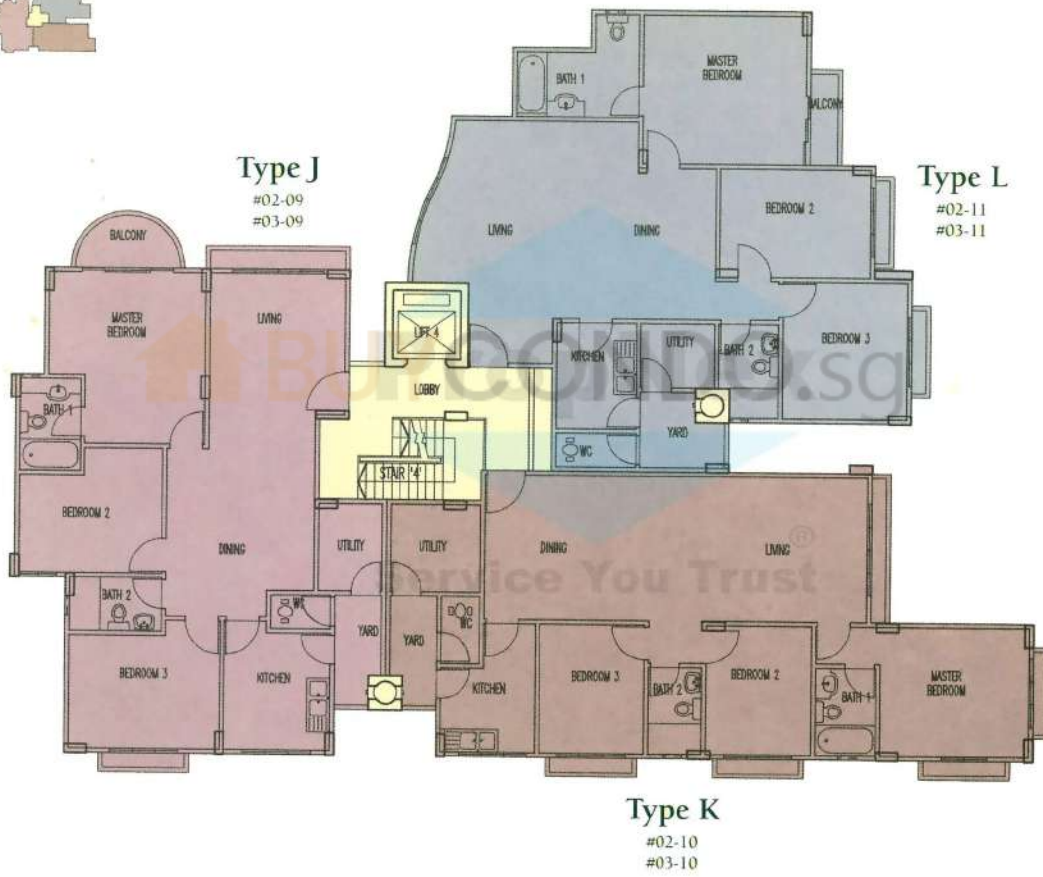
# 2nd / 3rd Storey



The above plan is subjected to any amendments as may be approved by the relevant Authorities.

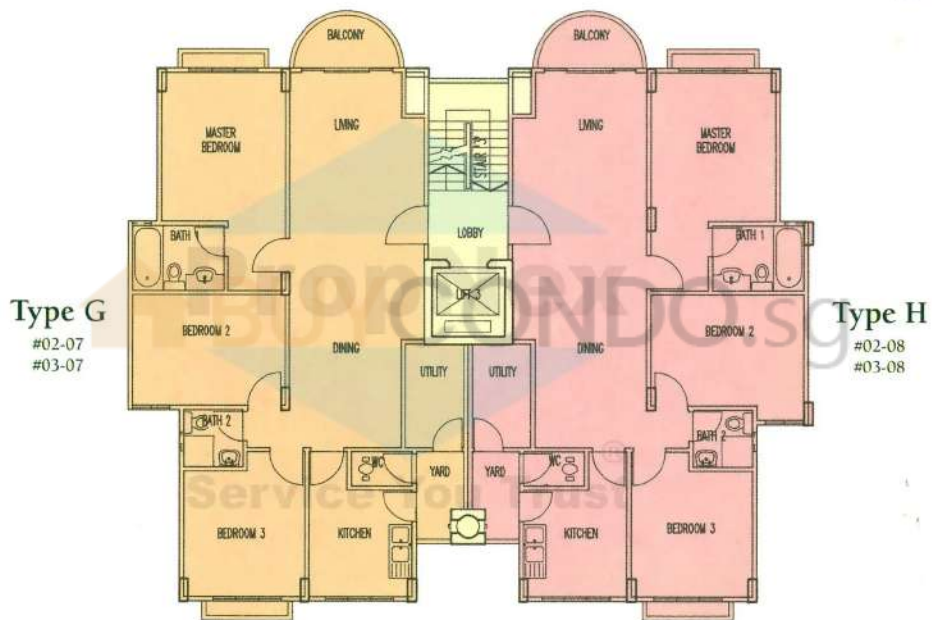
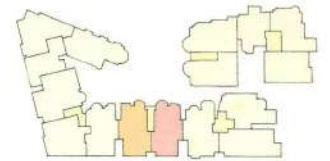


# 2nd / 3rd Storey



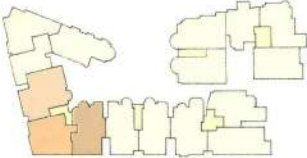
The above plan is subjected to any amendments as may be approved by the relevant Authorities.

# 2nd / 3rd Storey



The above plan is subjected to any amendments as may be approved by the relevant Authorities.

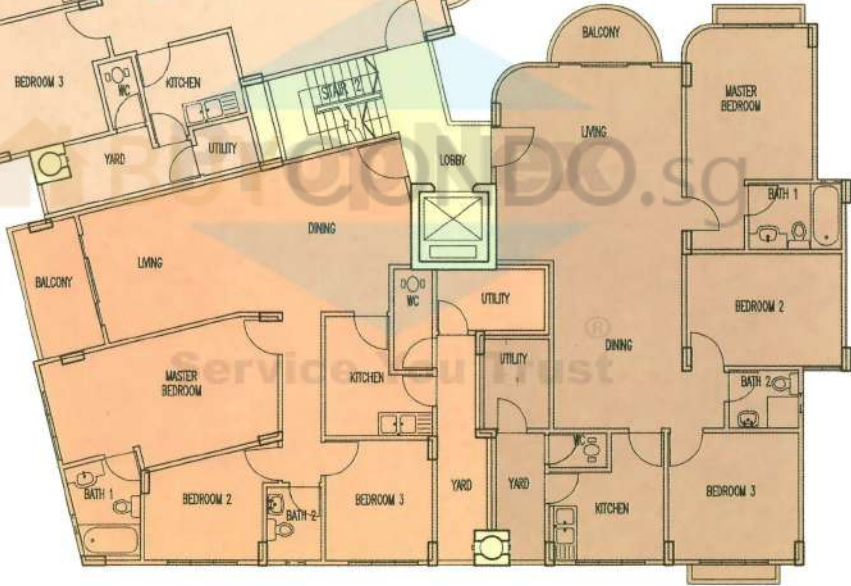
# 2nd / 3rd Storey



**Type D**  
#02-04  
#03-04



**Type F**  
#02-06  
#03-06

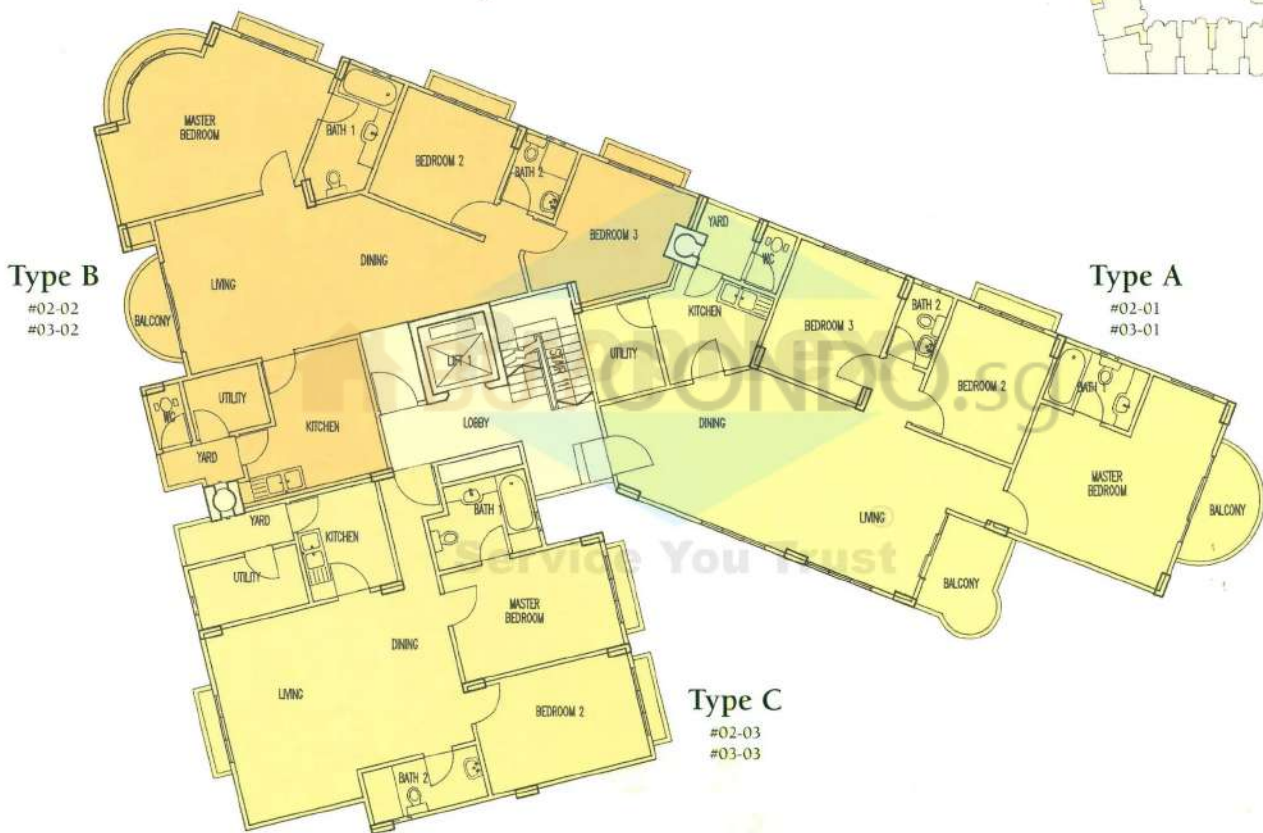
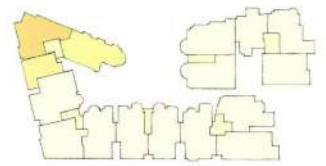


**Type E**  
#02-05  
#03-05

Service Trust

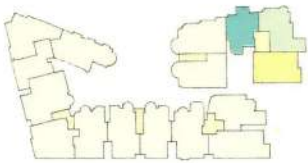
The above plan is subjected to any amendments as may be approved by the relevant Authorities.

# 2nd / 3rd Storey

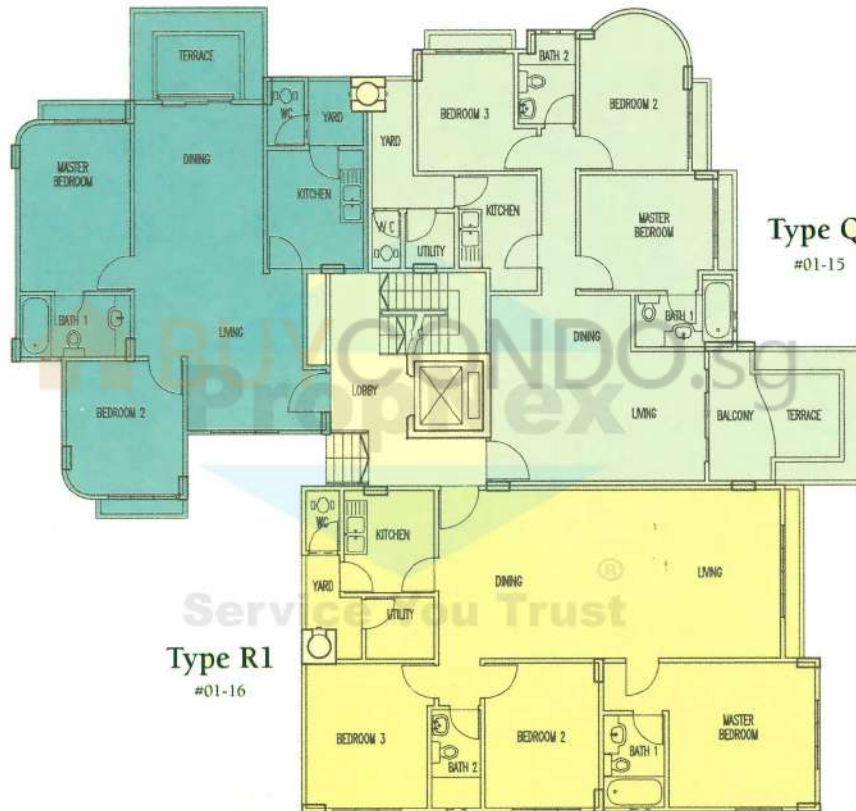


The above plan is subjected to any amendments as may be approved by the relevant Authorities.

# 1st Storey



**Type P1**  
#01-14



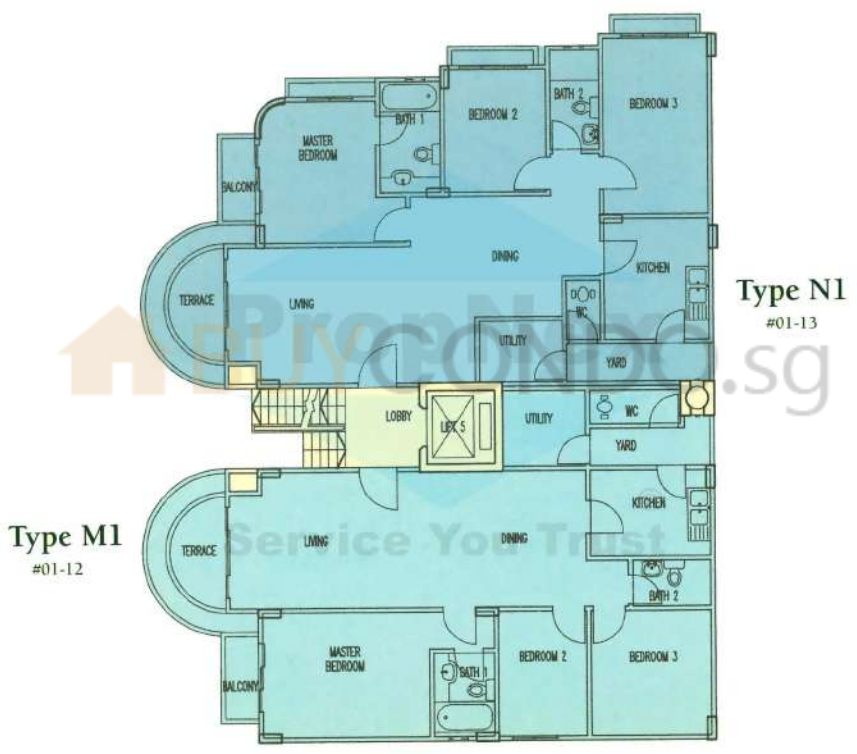
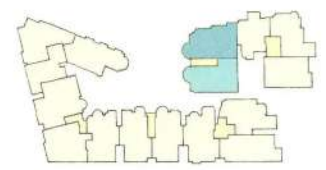
**Type Q1**  
#01-15

**Type R1**  
#01-16

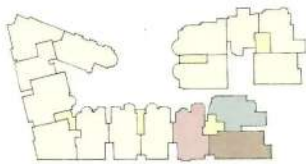
The above plan is subjected to any amendments as may be approved by the relevant Authorities.



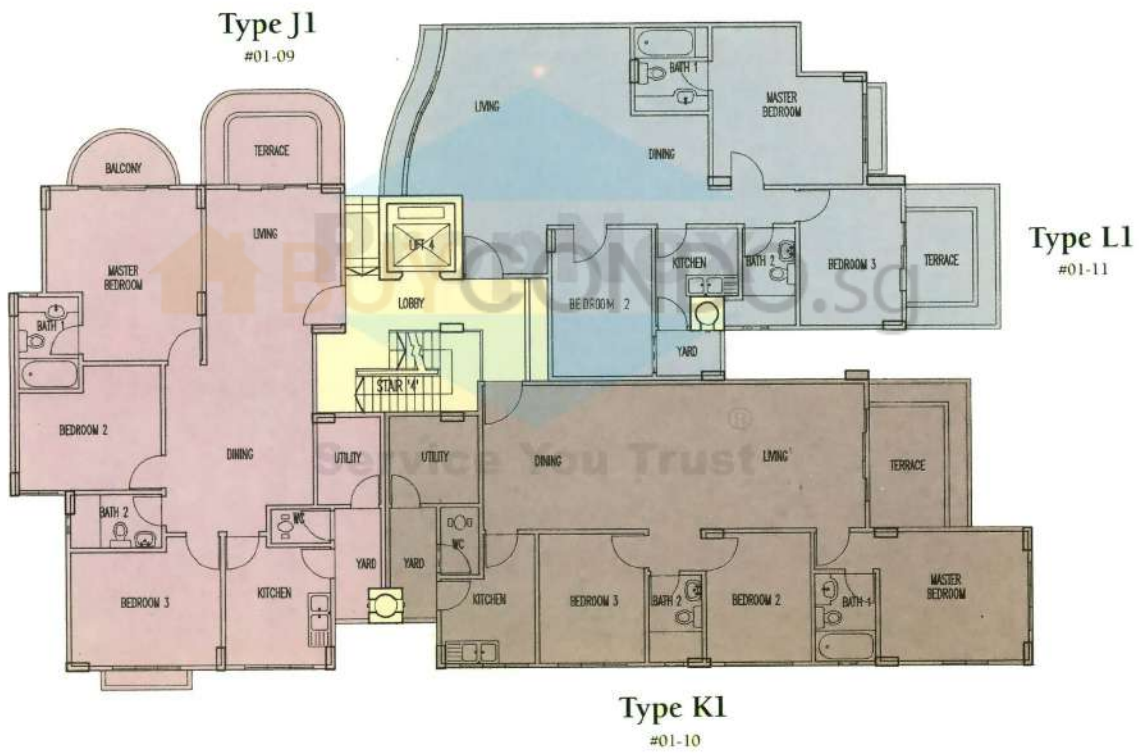
# 1st Storey



The above plan is subjected to any amendments as may be approved by the relevant Authorities.

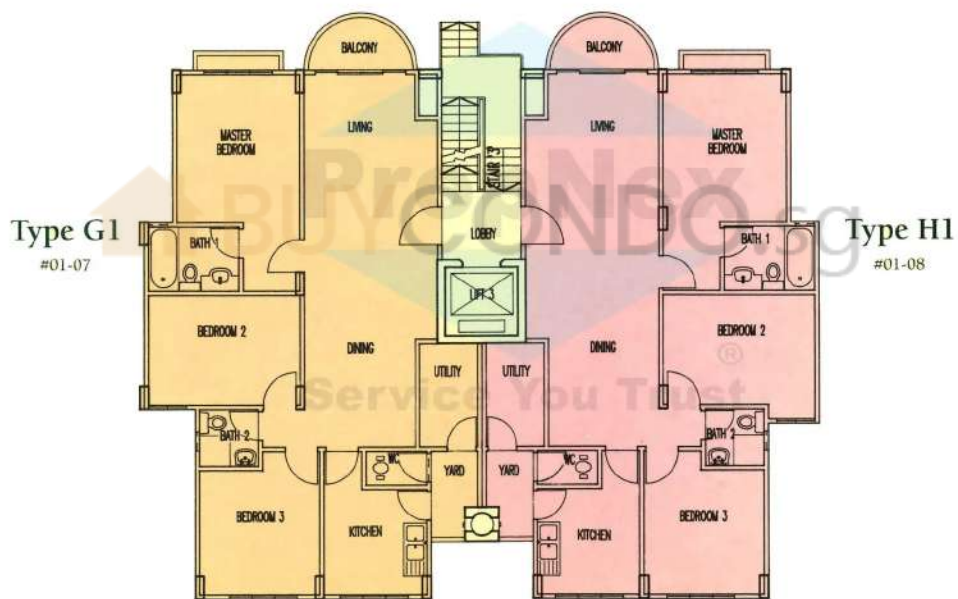
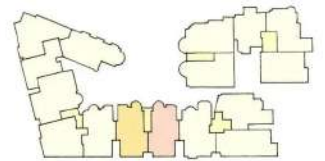


# 1st Storey



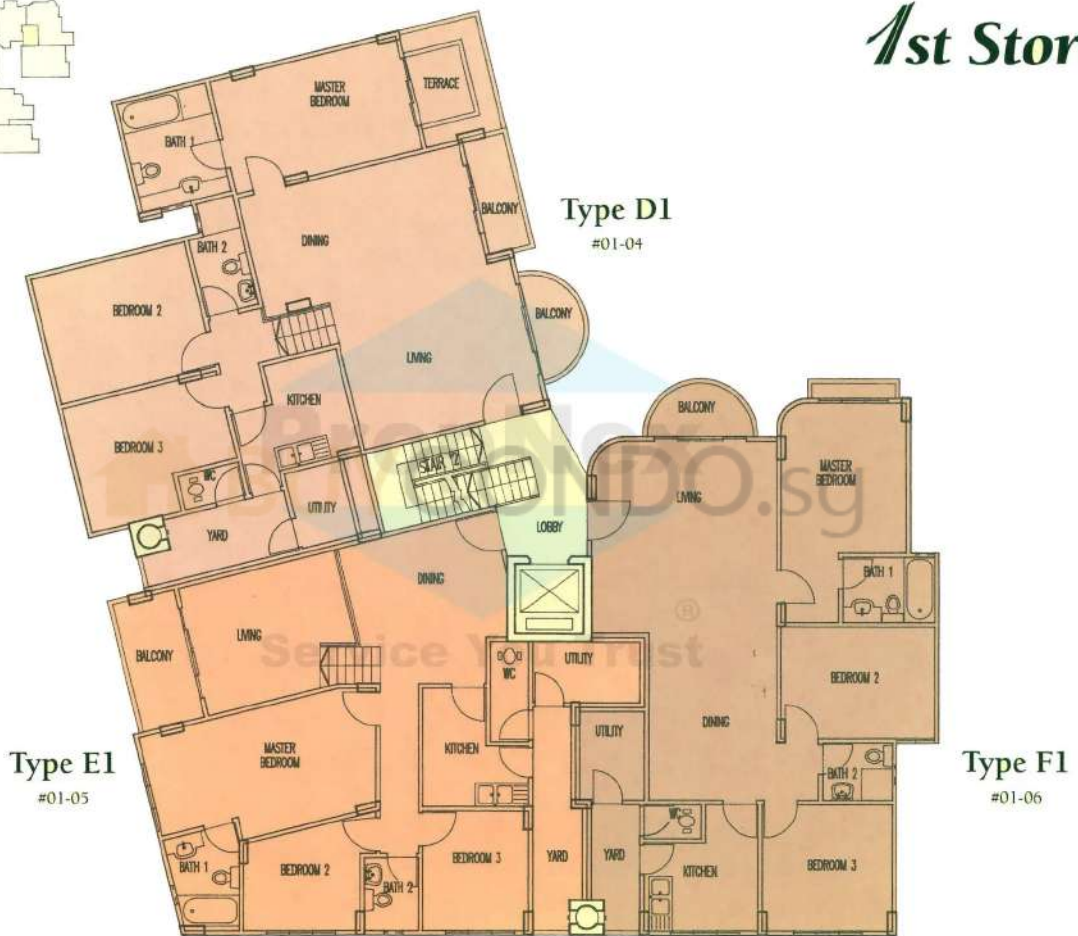
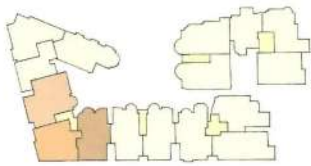
The above plan is subjected to any amendments as may be approved by the relevant Authorities.

# 1st Storey



The above plan is subjected to any amendments as may be approved by the relevant Authorities.

# 1st Storey



The above plan is subjected to any amendments as may be approved by the relevant Authorities.