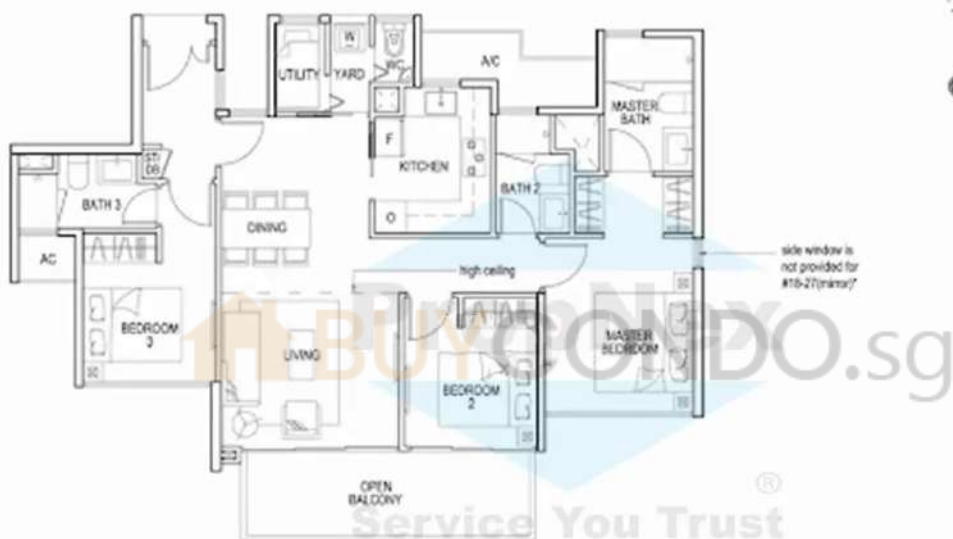
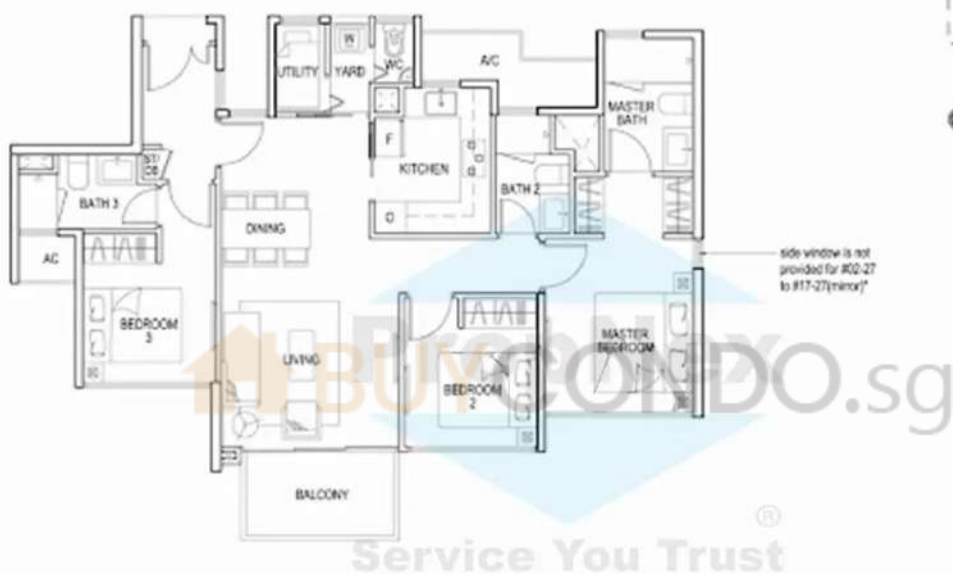


Blossom Residences - Floor plans as of 15 June 2011  
 Floor plans and areas are subject to change without final notice.



**TYPE B4b2**  
**3 BEDROOM (DUAL KEY)**  
 SFA = 120 sqm  
 #18-26  
 #18-27(mirror)

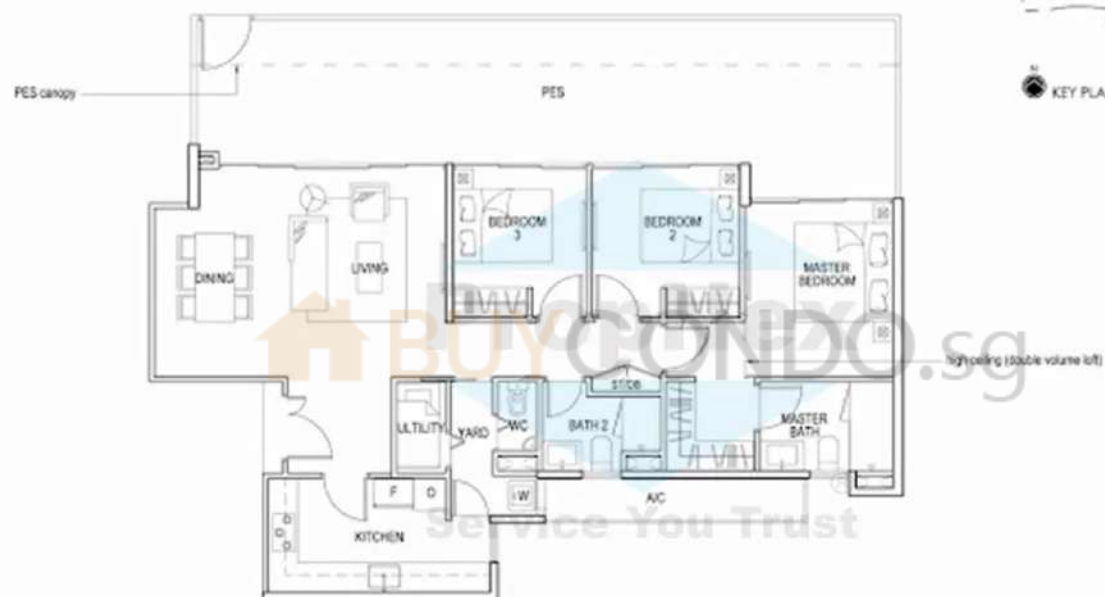
Blossom Residences - Floor plans as of 15 June 2011  
 Floor plans and areas are subject to change without final notice.



TYPE B4b1  
**3 BEDROOM (DUAL KEY)**  
 SFA = 103 sqm

#02-26 to #17-26  
 #02-27 to #17-27 (minor)\*

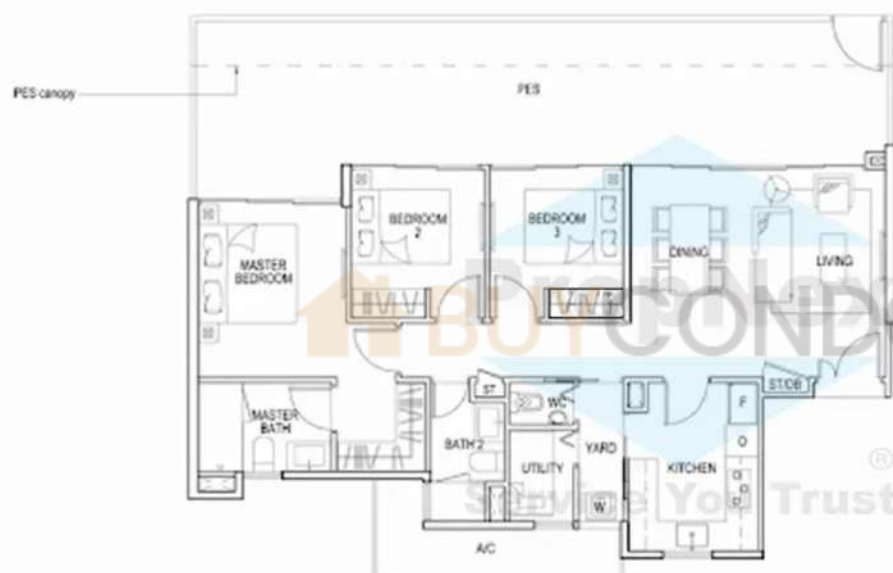
Blossom Residences - Floor plans as of 15 June 2011  
 Floor plans and areas are subject to change without final notice.



TYPE B6P1  
3 BEDROOM  
SFA = 159 sqm

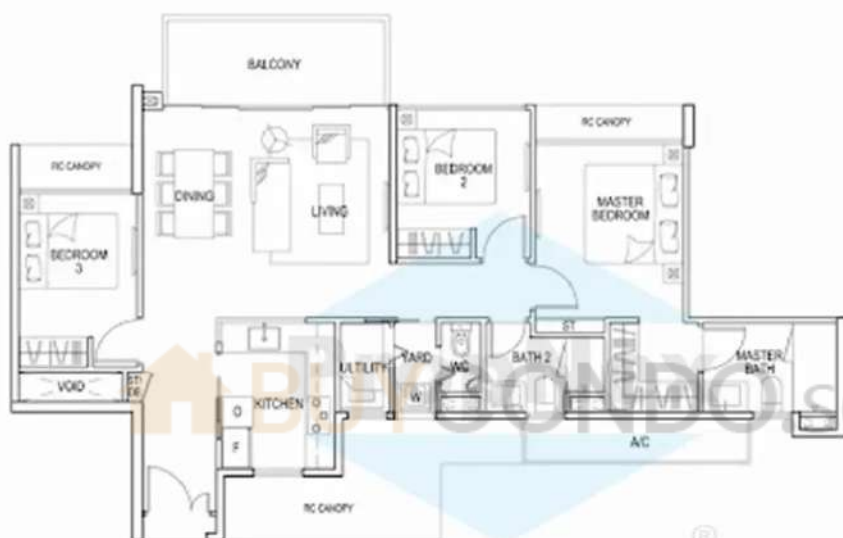
#01-05

Blossom Residences - Floor plans as of 15 June 2011  
Floor plans and areas are subject to change without final notice.



**TYPE B5P1**  
**3 BEDROOM**  
 SFA = 140 sqm  
 #01-20  
 #01-31(minor)

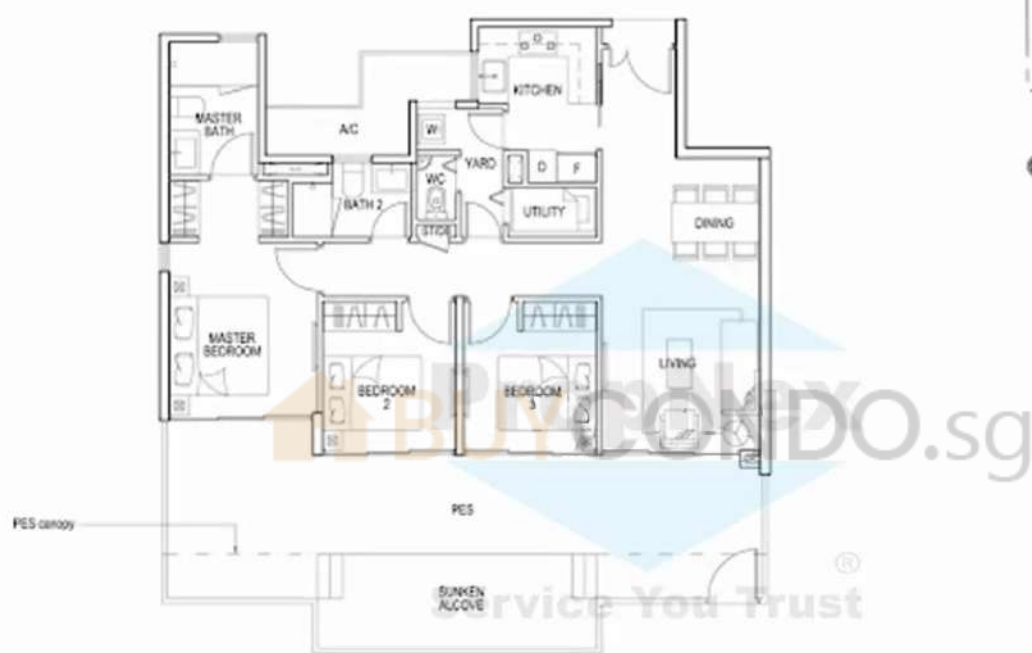
Blossom Residences - Floor plans as of 15 June 2011  
 Floor plans and areas are subject to change without final notice.



TYPE B3b1  
3 BEDROOM  
SFA = 101 sqm

#02-05	#02-08(mirror)	#02-17
#04-05	#04-08(mirror)	#04-17
#06-05	#06-08(mirror)	#06-17
#08-05	#08-08(mirror)	#08-17
#10-05	#10-08(mirror)	#10-17
#12-05	#12-08(mirror)	#12-17
#14-05	#14-08(mirror)	#14-17
#16-05	#16-08(mirror)	#16-17

Blossom Residences - Floor plans as of 15 June 2011  
Floor plans and areas are subject to change without final notice.

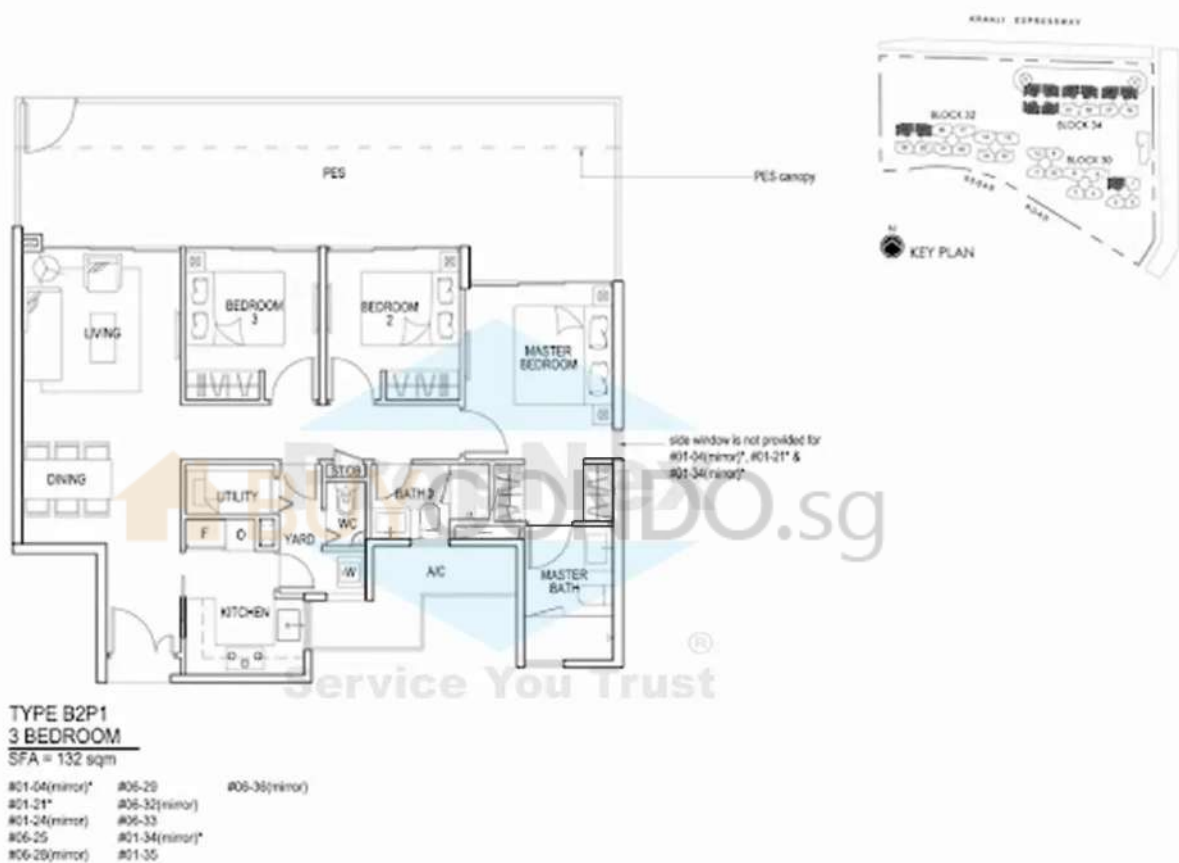


**TYPE B2P2**  
**3 BEDROOM**

SFA = 137 sqm

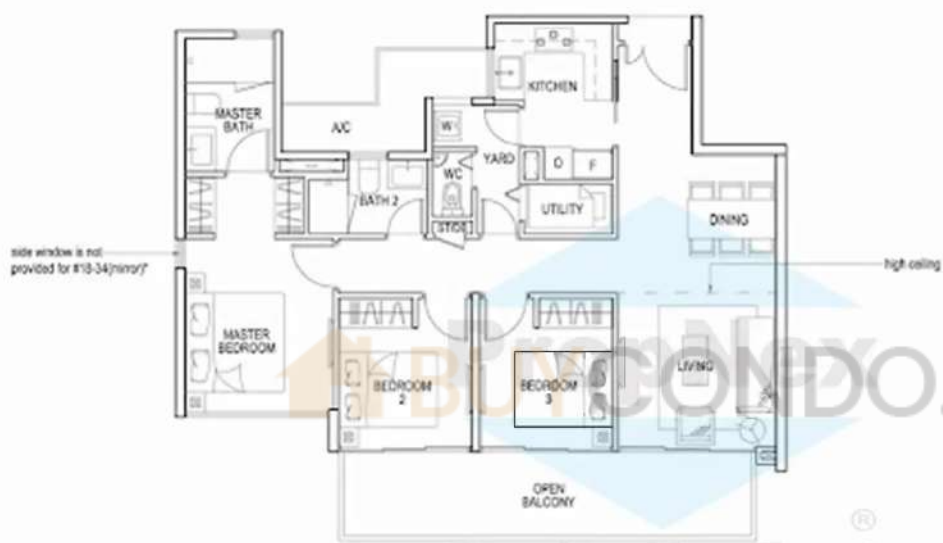
#01-14(minor) #01-19  
 #01-15 #01-22(minor)  
 #01-18(minor) #01-23

Blossom Residences - Floor plans as of 15 June 2011  
 Floor plans and areas are subject to change without final notice.



Blossom Residences - Floor plans as of 15 June 2011  
 Floor plans and areas are subject to change without final notice.

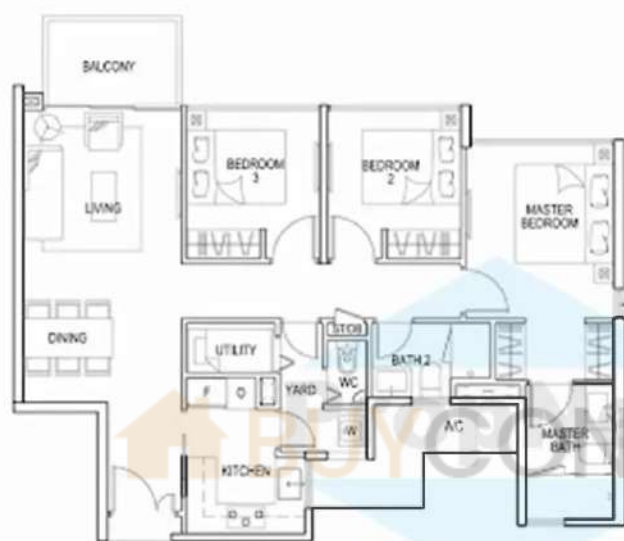




**TYPE B2b2**  
**3 BEDROOM**  
 SFA = 118 sqm

#10-14(mirror)	#10-22(mirror)
#10-15	#10-23
#10-18(mirror)	#10-34(mirror)*
#10-19	#10-35

Blossom Residences - Floor plans as of 15 June 2011  
 Floor plans and areas are subject to change without final notice.



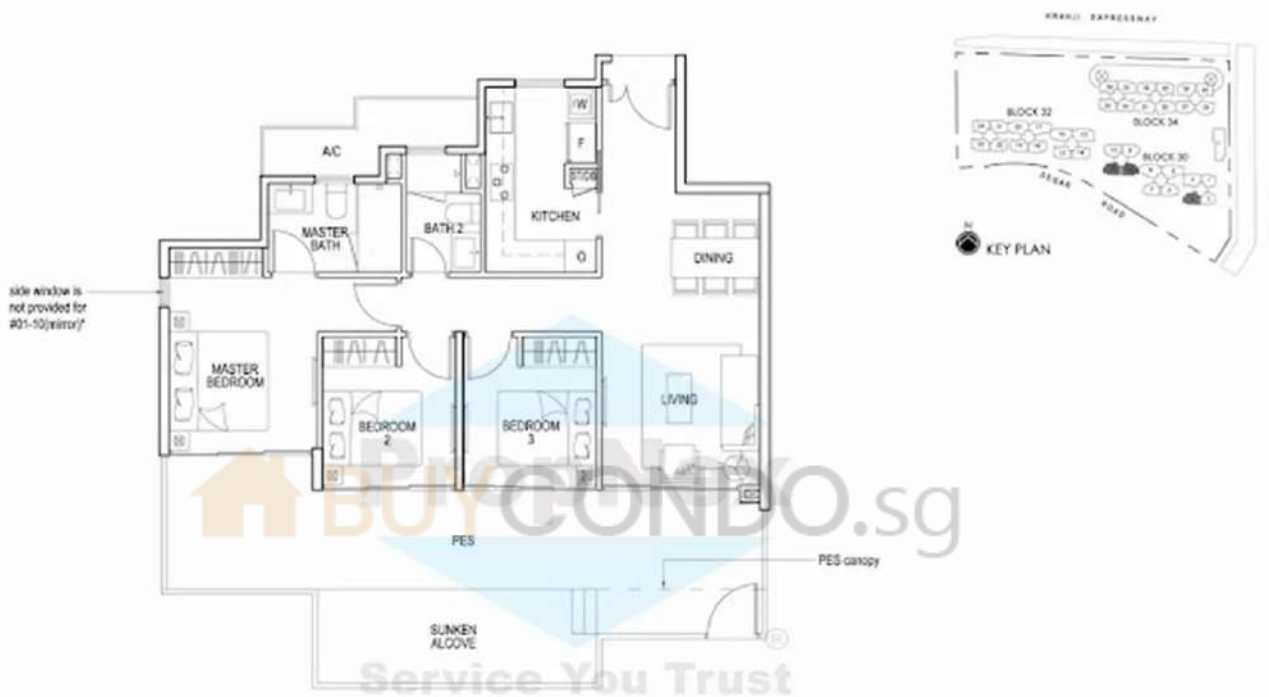
side window is not provided for  
 #02-04 to #15-04(minor)\*  
 #02-21 to #17-21\*  
 #02-34 to #17-34(minor)\*

**TYPE B2b1**  
**3 BEDROOM**  
 SFA = 98 sqm

- |                          |                          |
|--------------------------|--------------------------|
| #02-04 to #15-04(minor)* | #07-25 to #17-25         |
| #02-14 to #17-14(minor)  | #07-28 to #17-28(minor)  |
| #02-15 to #17-15         | #07-29 to #17-29         |
| #02-18 to #17-18(minor)  | #07-32 to #17-32(minor)  |
| #02-19 to #17-19         | #07-33 to #17-33         |
| #02-21 to #17-21*        | #02-34 to #17-34(minor)* |
| #02-22 to #17-22(minor)  | #02-35 to #17-35         |
| #02-23 to #17-23         | #07-36 to #17-36(minor)  |
| #02-24 to #17-24(minor)  |                          |

Service You Trust

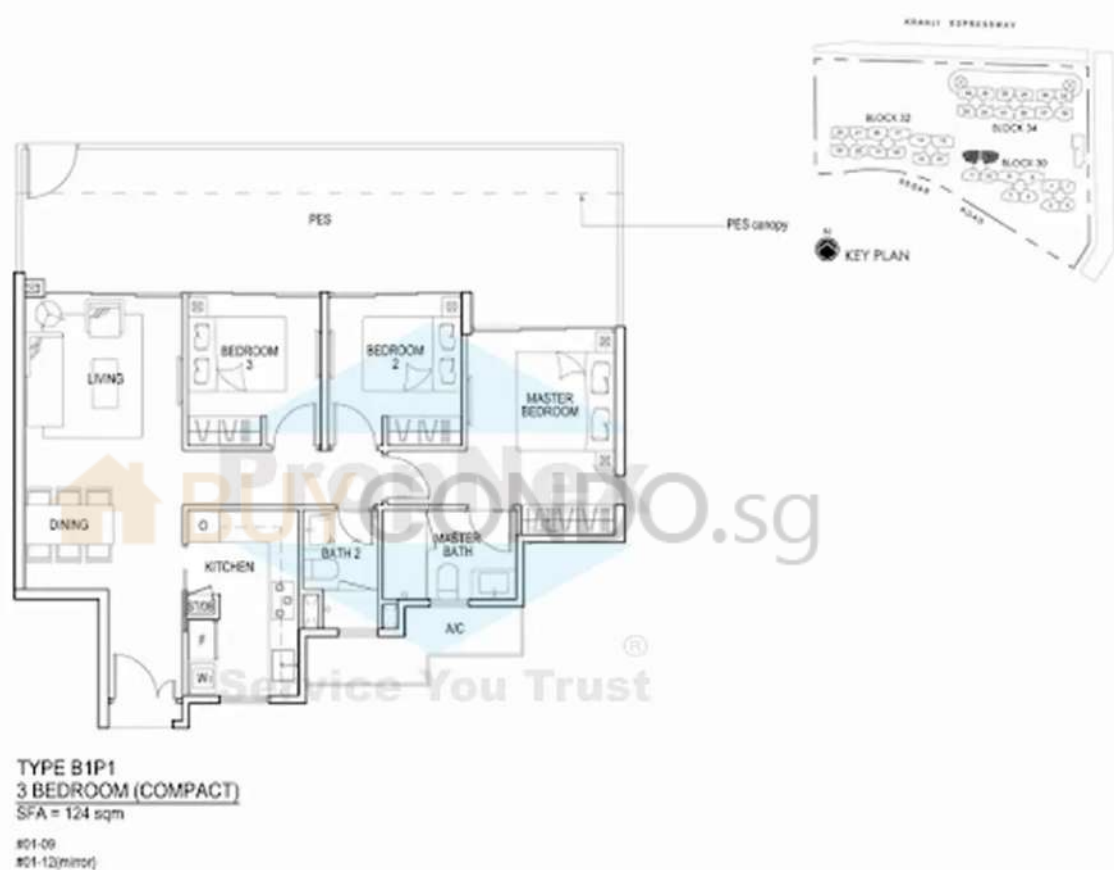
Blossom Residences - Floor plans as of 15 June 2011  
 Floor plans and areas are subject to change without final notice.



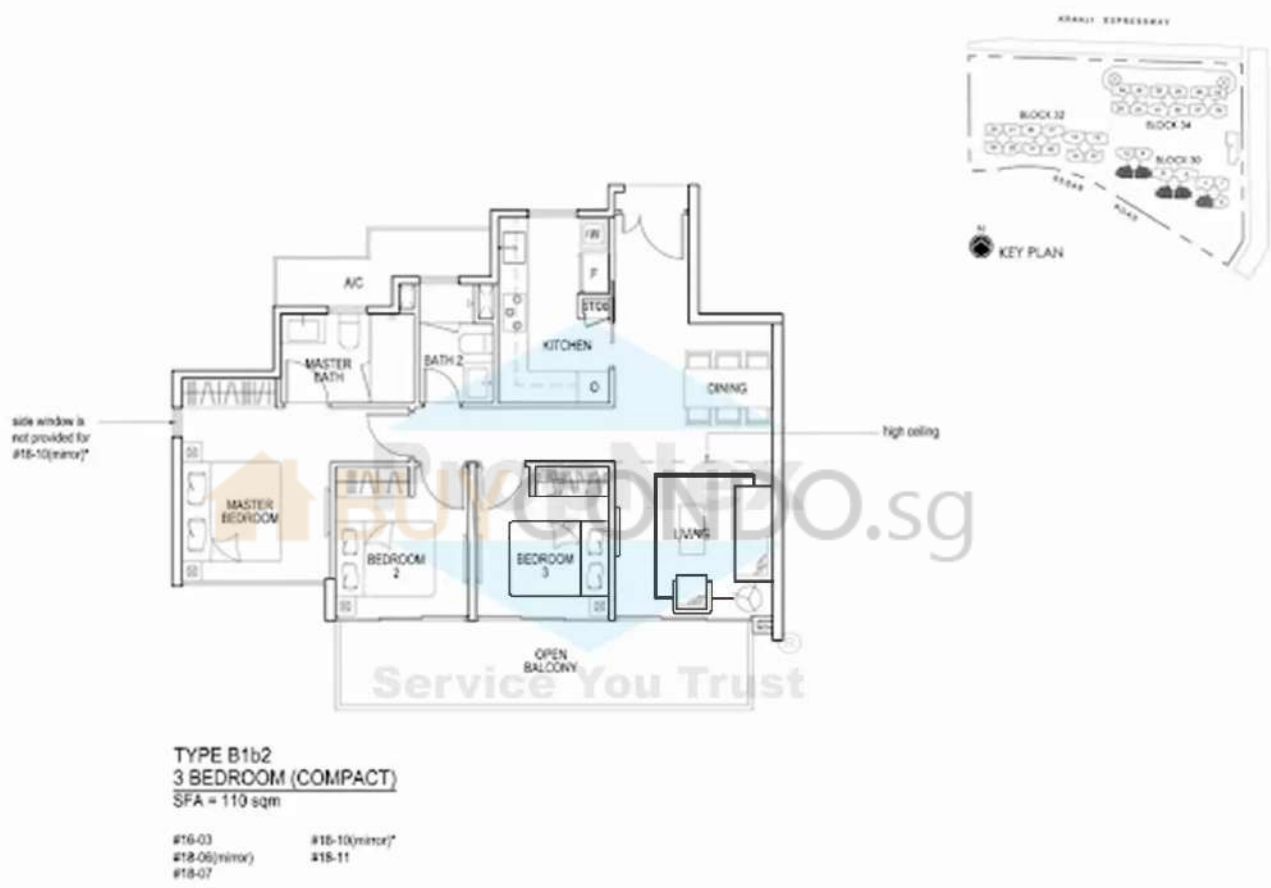
**TYPE B1P2**  
**3 BEDROOM (COMPACT)**  
 SFA = 127 sqm

#01-03  
 #01-10 (minor)\*  
 #01-11

Blossom Residences - Floor plans as of 15 June 2011  
 Floor plans and areas are subject to change without final notice.



Blossom Residences - Floor plans as of 15 June 2011  
 Floor plans and areas are subject to change without final notice.



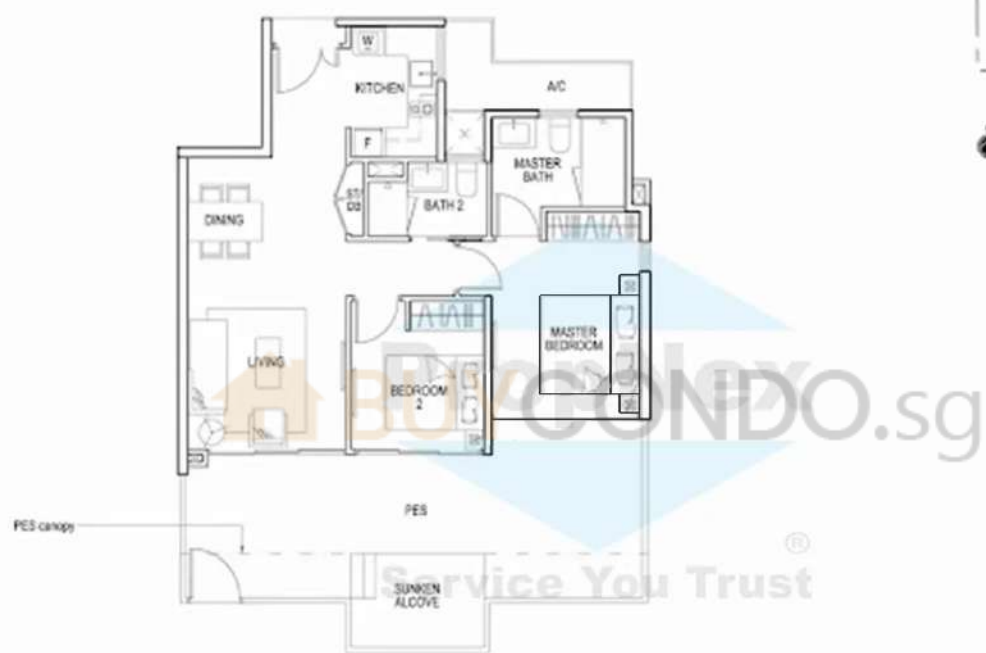
Blossom Residences - Floor plans as of 15 June 2011  
 Floor plans and areas are subject to change without final notice.



**TYPE B1b1**  
**3 BEDROOM (COMPACT)**  
 SFA = 90 sqm

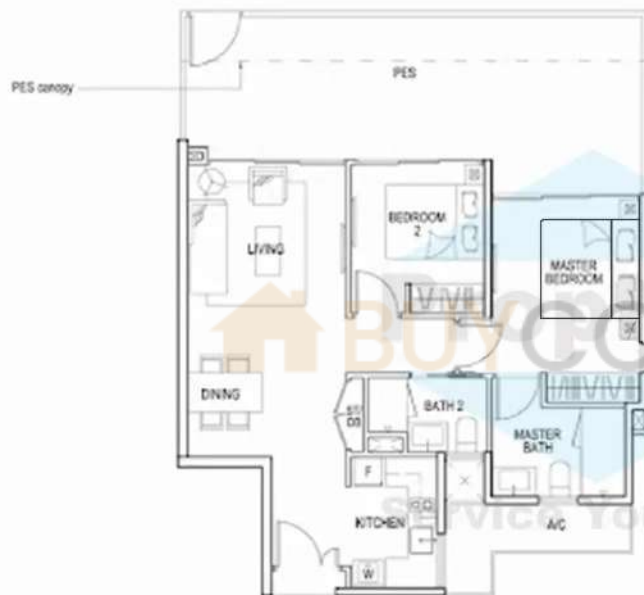
- #02-03 to #15-03
- #05-06 to #17-06(mirror)
- #05-07 to #17-07
- #02-09 to #17-09
- #02-10 to #17-10(mirror)\*
- #02-11 to #17-11
- #02-12 to #17-12(mirror)

Blossom Residences - Floor plans as of 15 June 2011  
 Floor plans and areas are subject to change without final notice.



**TYPE A1P2**  
**2 BEDROOM**  
 SFA = 103 sqm  
 #01-02

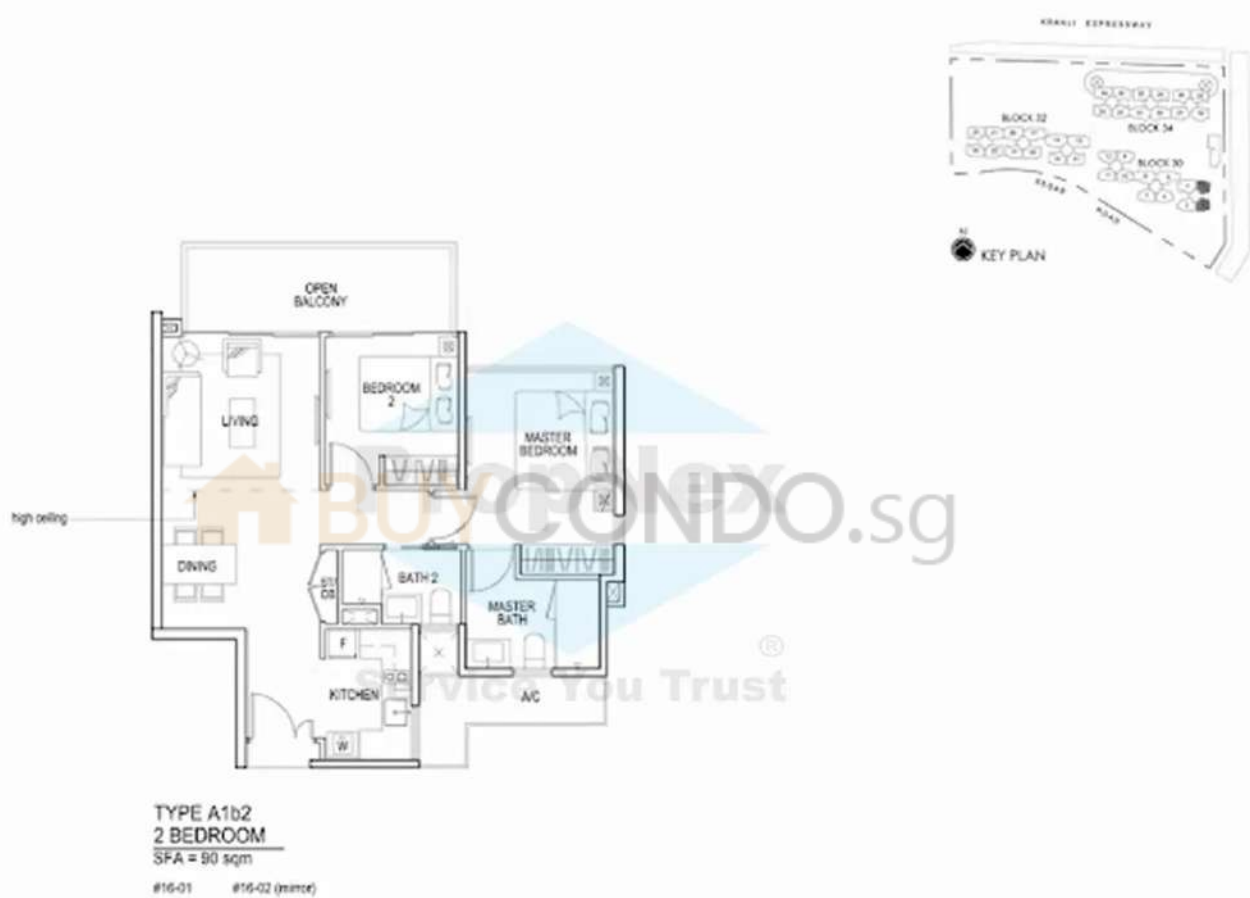
Blossom Residences - Floor plans as of 15 June 2011  
 Floor plans and areas are subject to change without final notice.



TYPE A1P1  
 2 BEDROOM  
 SFA = 100 sqm  
 #01-01

Blossom Residences - Floor plans as of 15 June 2011  
 Floor plans and areas are subject to change without final notice.





Blossom Residences - Floor plans as of 15 June 2011  
 Floor plans and areas are subject to change without final notice.

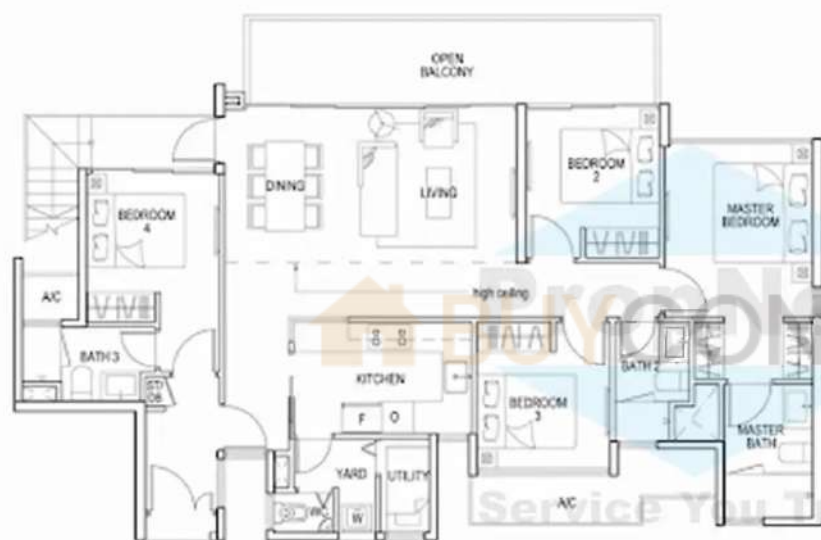


**TYPE A1**  
**2 BEDROOM**

SFA = 70 sqm

#02-01 to #15-01  
#02-02 to #15-02 (mirror)

Blossom Residences - Floor plans as of 15 June 2011  
Floor plans and areas are subject to change without final notice.



Lower Level

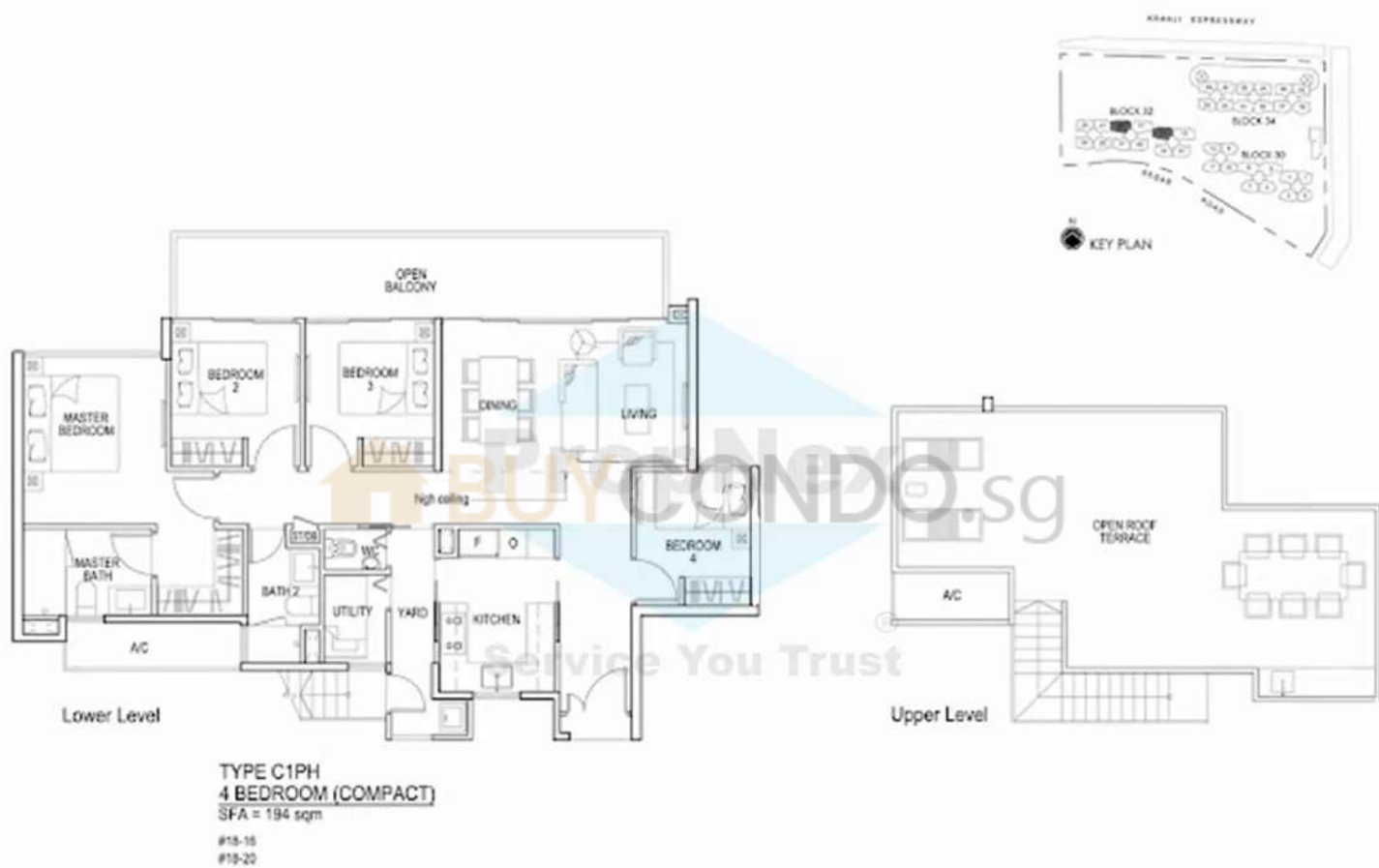
TYPE C3PH  
**4 BEDROOM (DUAL KEY)**  
 SFA = 191 sqm

#16-13

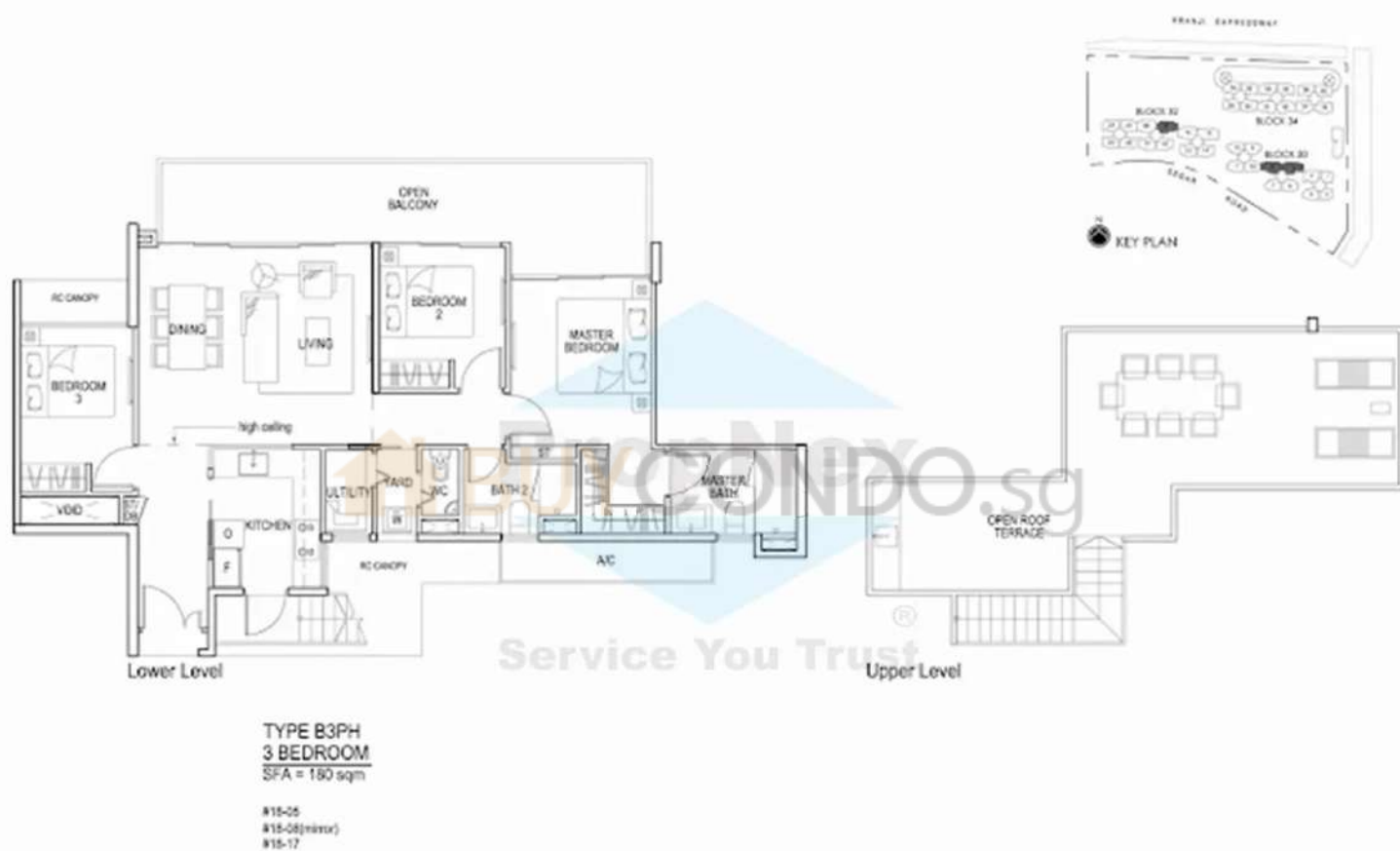


Upper Level

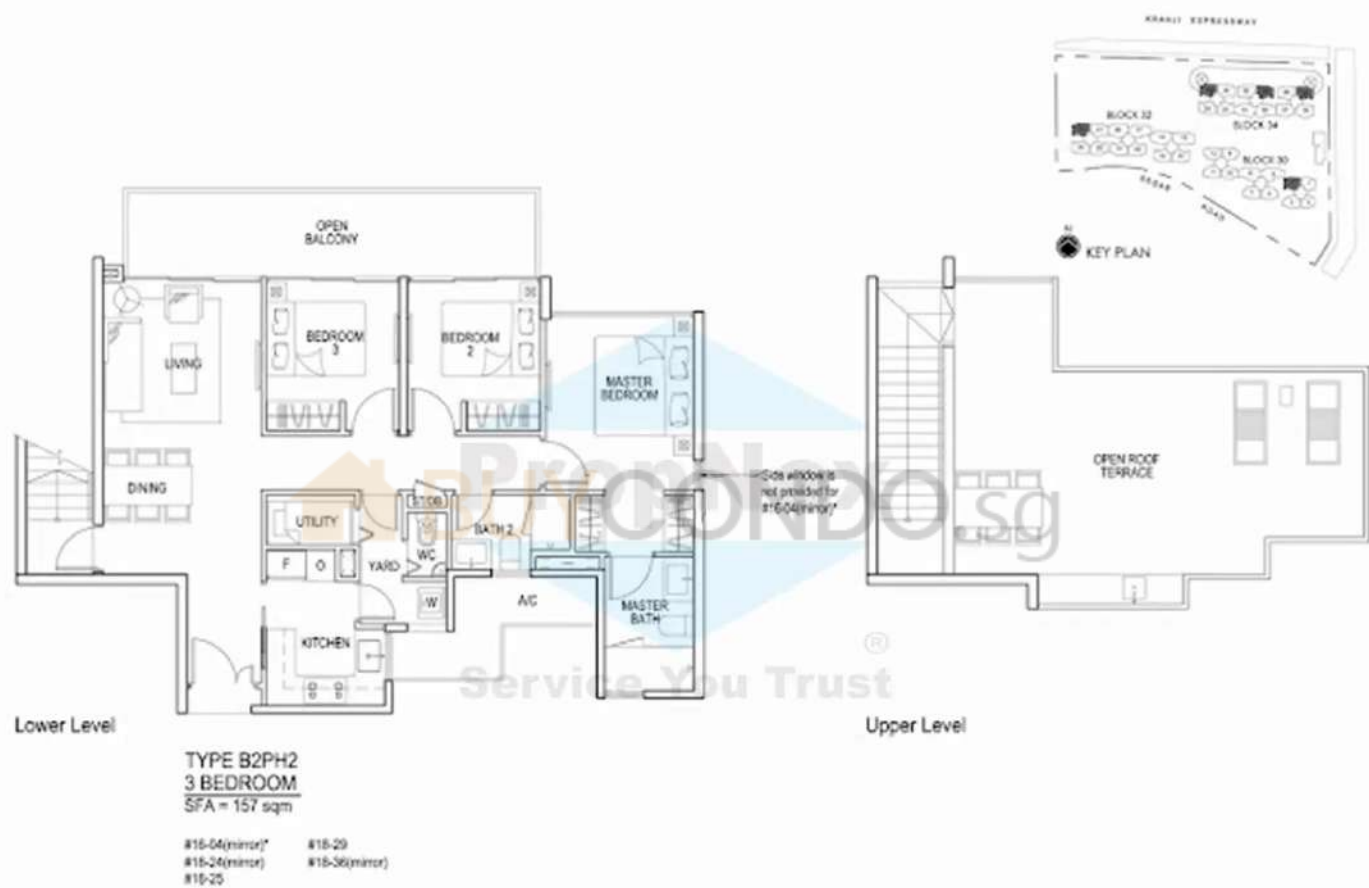
Blossom Residences - Floor plans as of 15 June 2011  
 Floor plans and areas are subject to change without final notice.



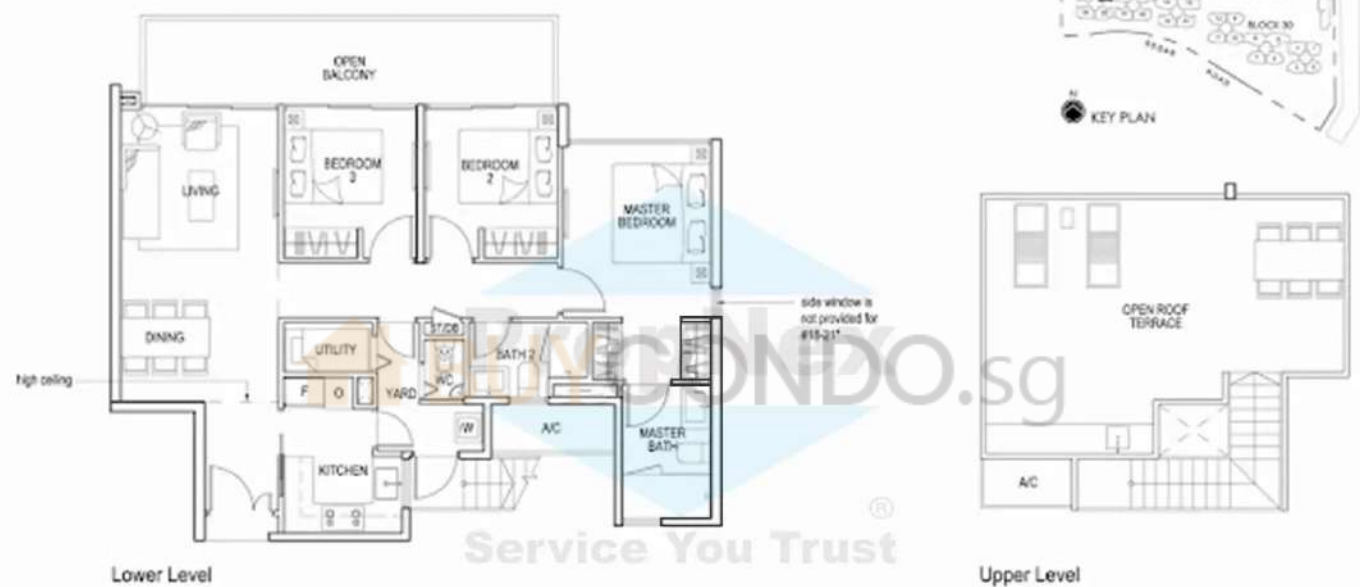
Blossom Residences - Floor plans as of 15 June 2011  
 Floor plans and areas are subject to change without final notice.



Blossom Residences - Floor plans as of 15 June 2011  
 Floor plans and areas are subject to change without final notice.



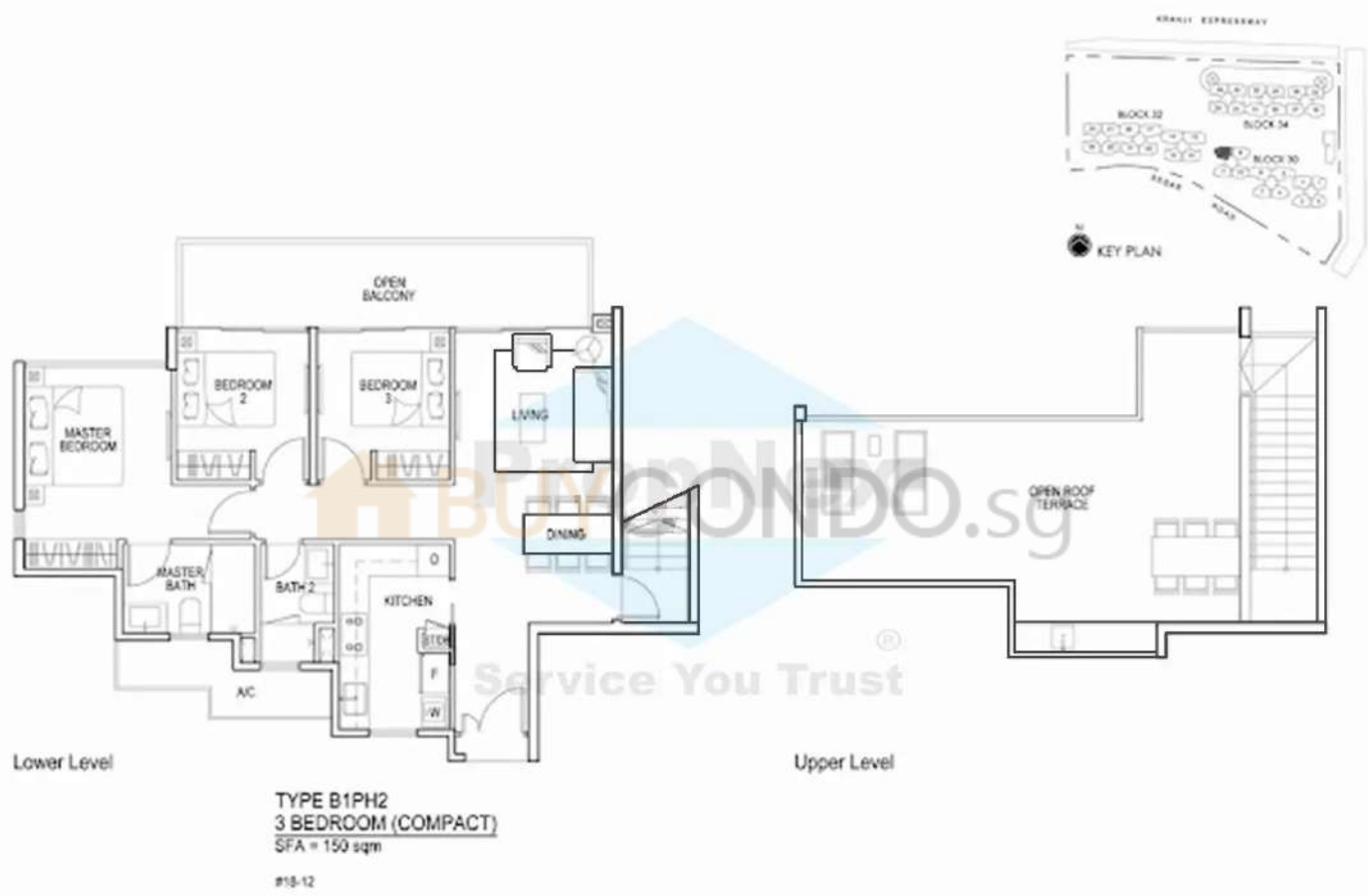
Blossom Residences - Floor plans as of 15 June 2011  
 Floor plans and areas are subject to change without final notice.



**TYPE B2PH1**  
**3 BEDROOM**  
**SFA = 167 sqm**

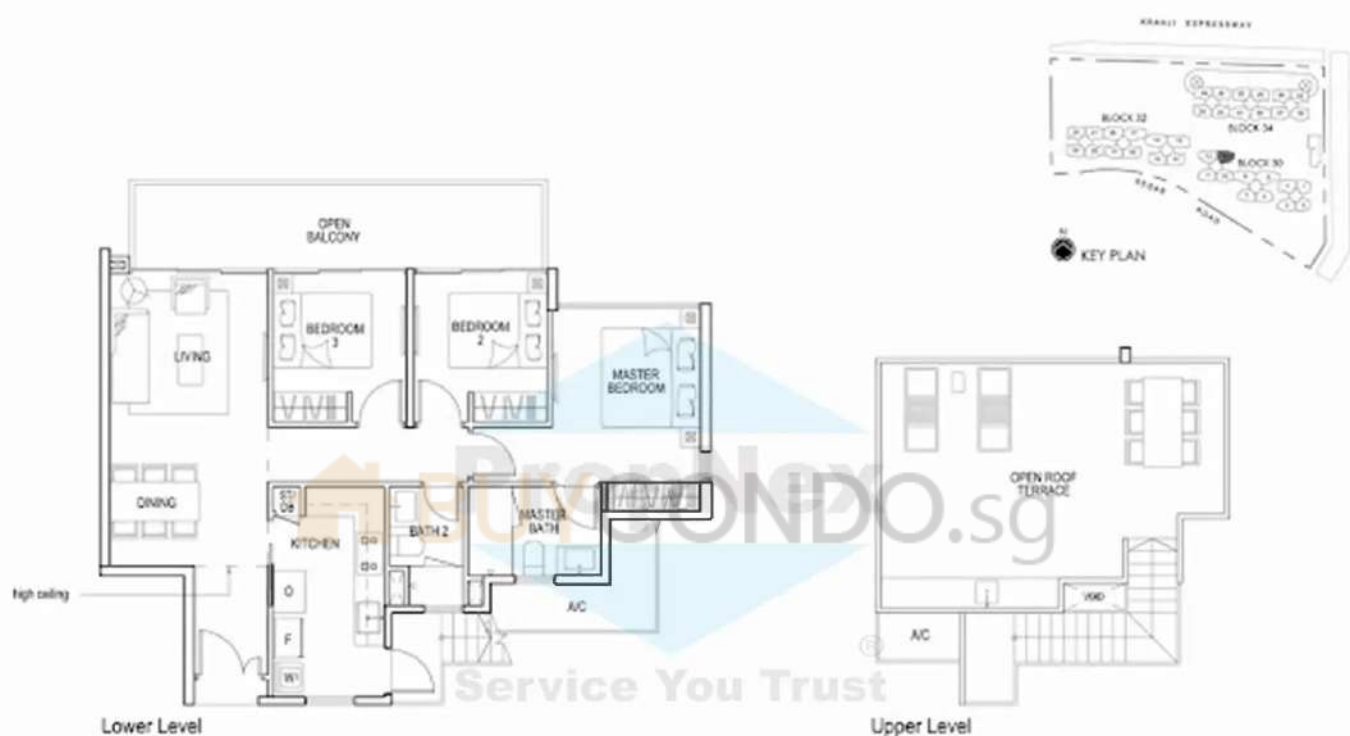
#18-21\*  
 #18-28(minor)  
 #18-32(minor)  
 #18-33

Blossom Residences - Floor plans as of 15 June 2011  
 Floor plans and areas are subject to change without final notice.



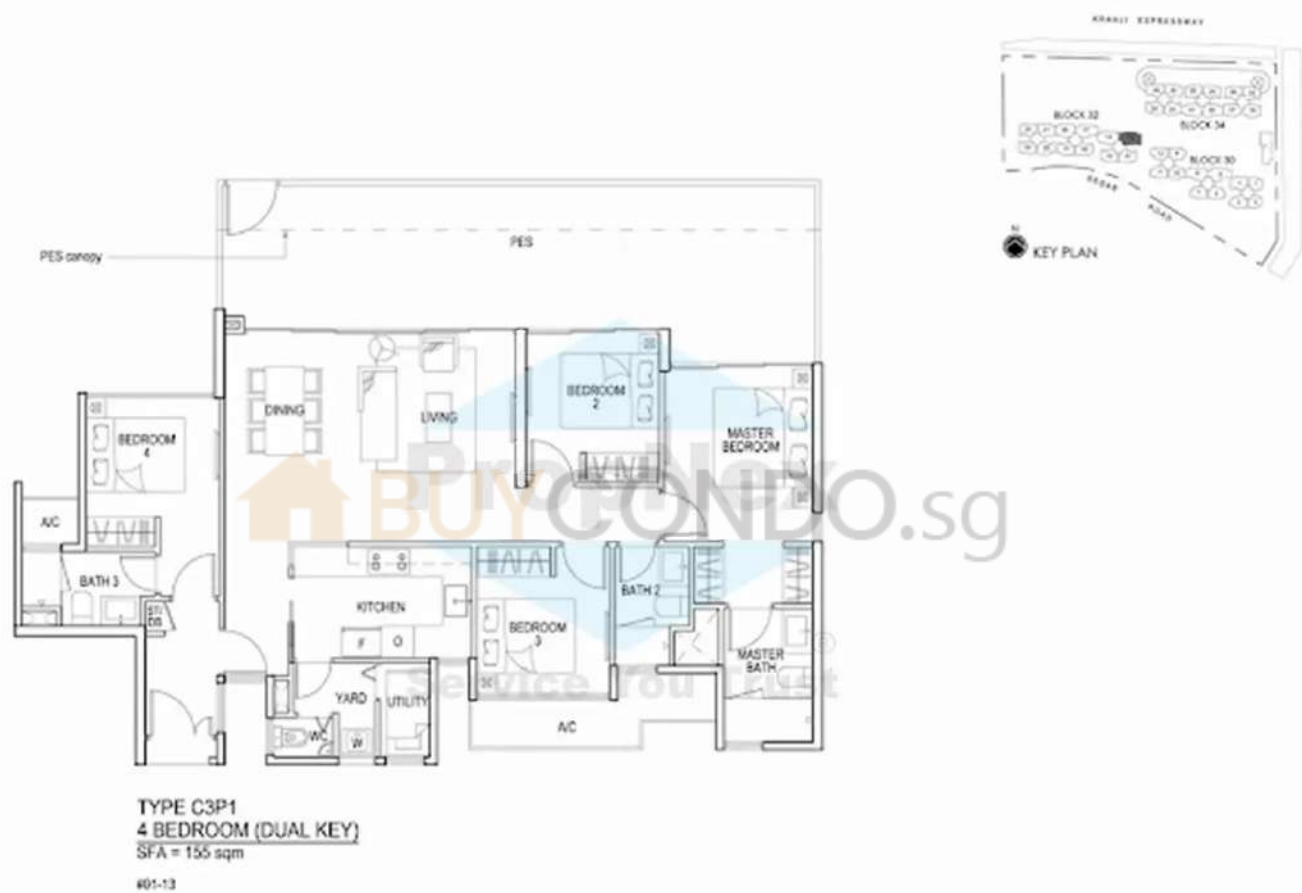
Blossom Residences - Floor plans as of 15 June 2011  
 Floor plans and areas are subject to change without final notice.



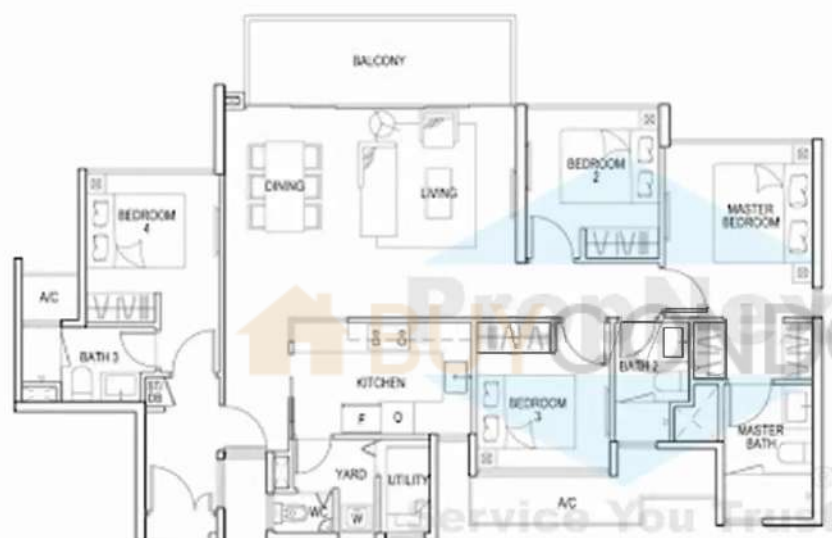


TYPE B1PH1  
 3 BEDROOM (COMPACT)  
 SFA = 161 sqm  
 #18-09

Blossom Residences - Floor plans as of 15 June 2011  
 Floor plans and areas are subject to change without final notice.



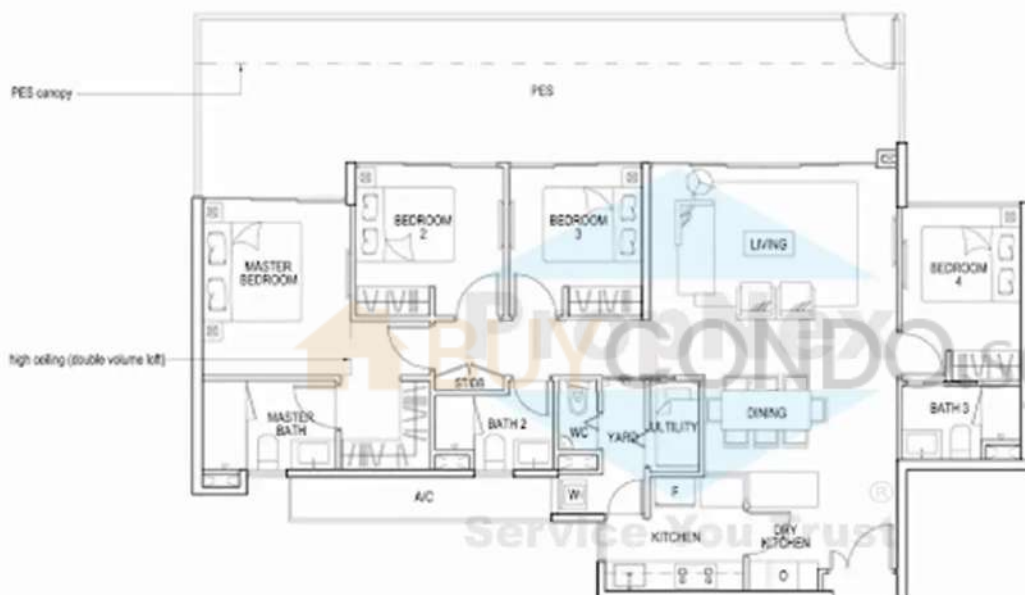
Blossom Residences - Floor plans as of 15 June 2011  
 Floor plans and areas are subject to change without final notice.



TYPE C3b1  
4 BEDROOM (DUAL KEY)  
SFA = 126 sqm

#02-13 to #17-13

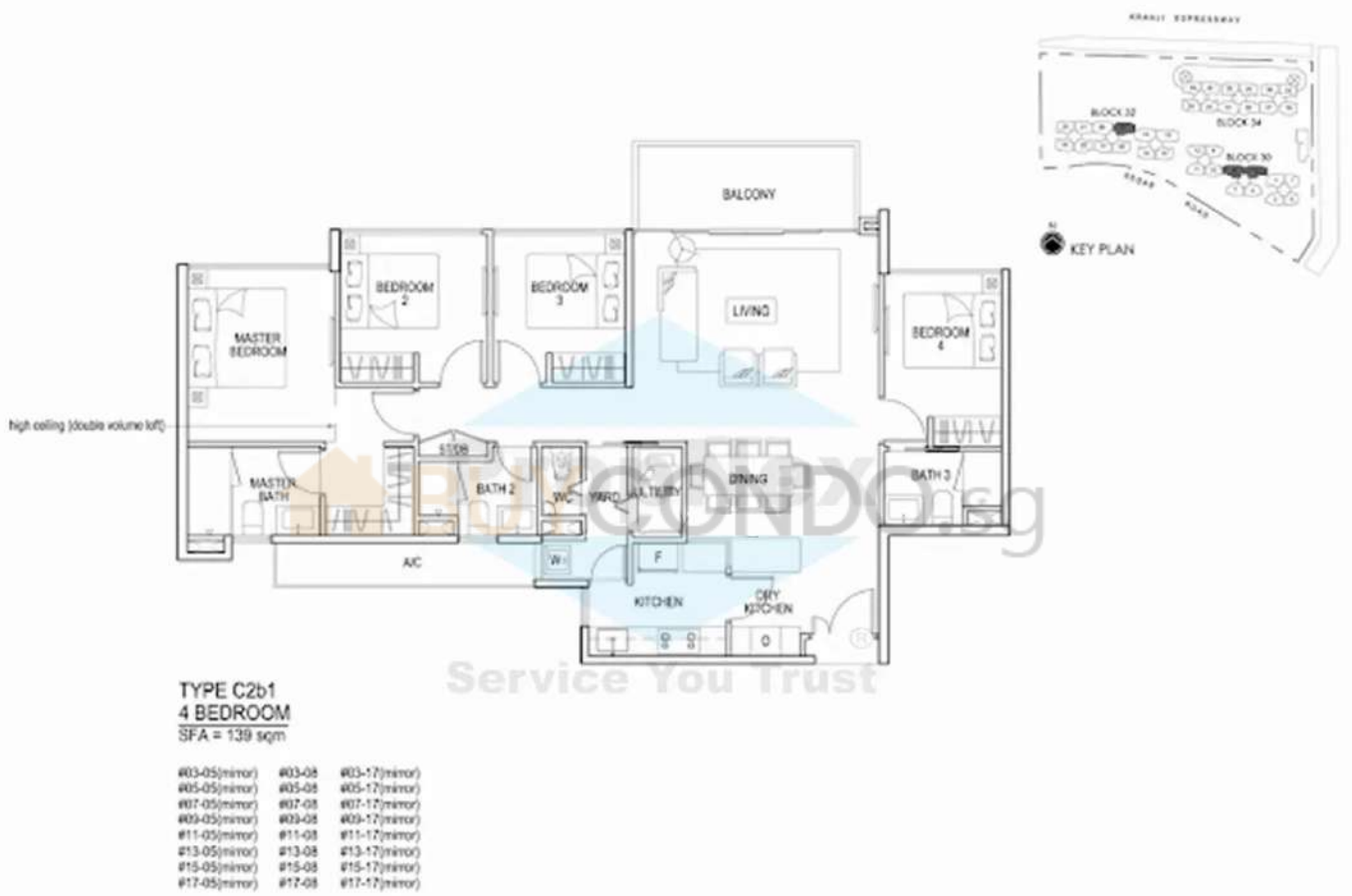
Blossom Residences - Floor plans as of 15 June 2011  
Floor plans and areas are subject to change without final notice.



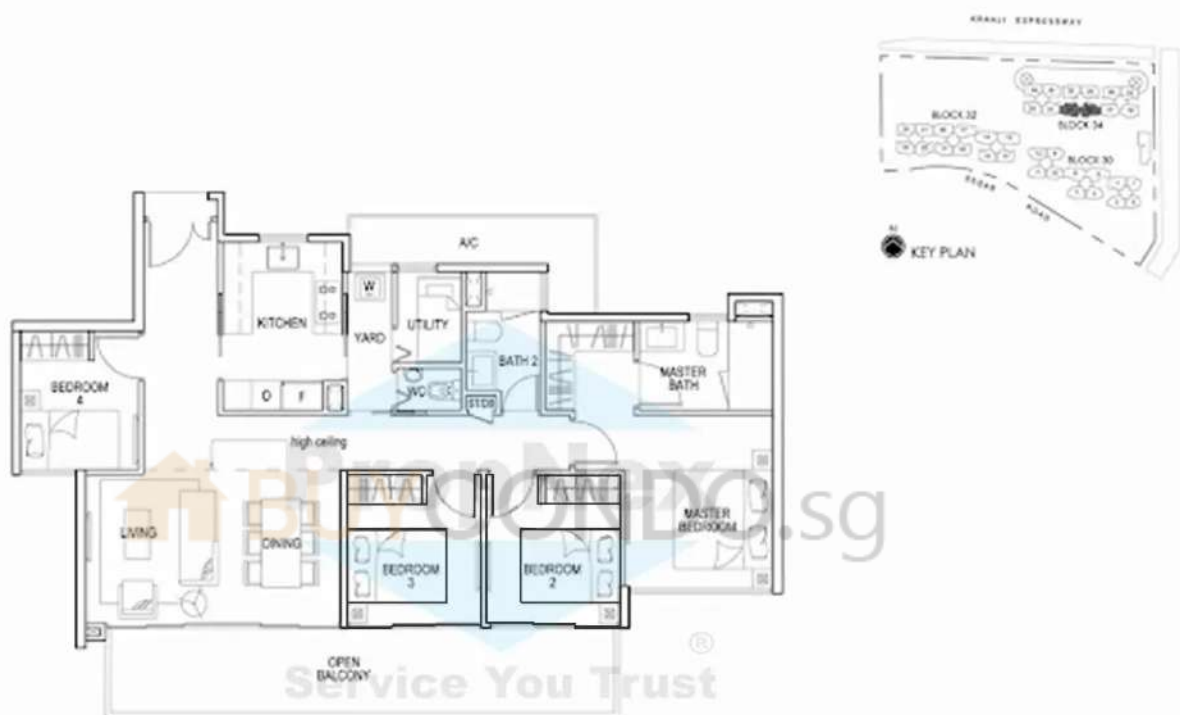
TYPE C2P1  
4 BEDROOM  
SFA = 175 sqm

#01-08  
#01-17 (mirror)

Blossom Residences - Floor plans as of 15 June 2011  
Floor plans and areas are subject to change without final notice.



Blossom Residences - Floor plans as of 15 June 2011  
 Floor plans and areas are subject to change without final notice.



TYPE C1b2  
 4 BEDROOM (COMPACT)  
 SFA = 143 sqm

#18-30  
 #18-31(mirror)

Blossom Residences - Floor plans as of 15 June 2011  
 Floor plans and areas are subject to change without final notice.



TYPE C1P1  
 4 BEDROOM (COMPACT)  
 SFA = 152 sqm

#01-18  
 #01-30

Blossom Residences - Floor plans as of 15 June 2011  
 Floor plans and areas are subject to change without final notice.



**TYPE C1b1**  
**4 BEDROOM (COMPACT)**  
 SFA = 116 sqm

#02-16 to #17-16  
 #02-20 to #17-20  
 #02-30 to #17-30  
 #02-31 to #17-31 (minor)

Blossom Residences - Floor plans as of 15 June 2011  
 Floor plans and areas are subject to change without final notice.