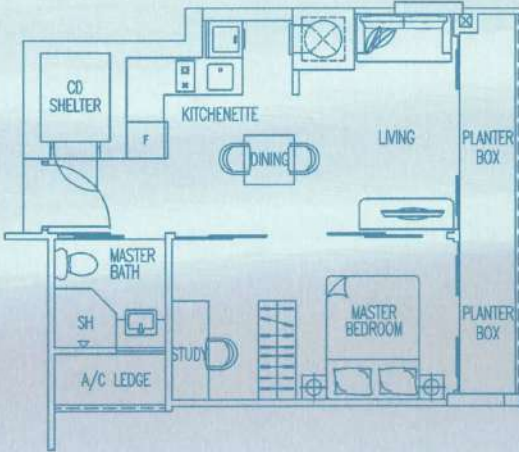
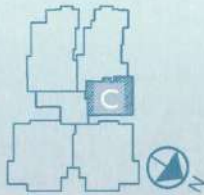


# Type C

(47 sqm / 506 sq ft)

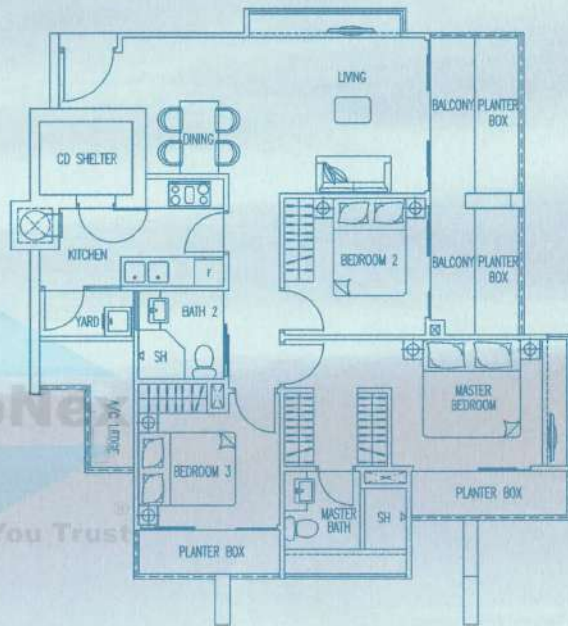


#02-03  
#03-03  
#04-03  
#05-03



# Type D

(106 sqm / 1141 sq ft)



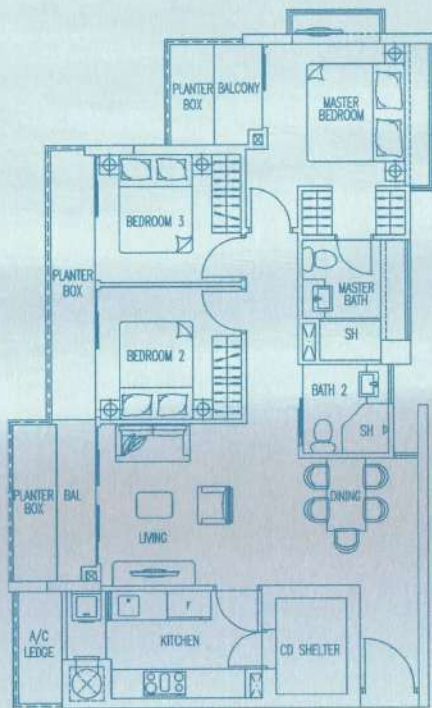
#02-04  
#03-04  
#04-04



The above plans are subject to changes as may be approved by relevant authorities. Plans are not drawn to scale.

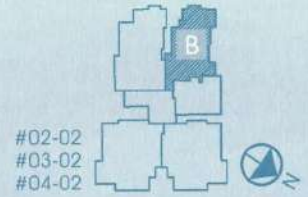
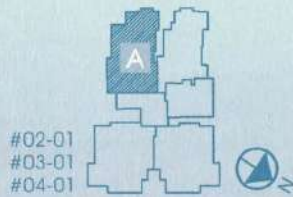
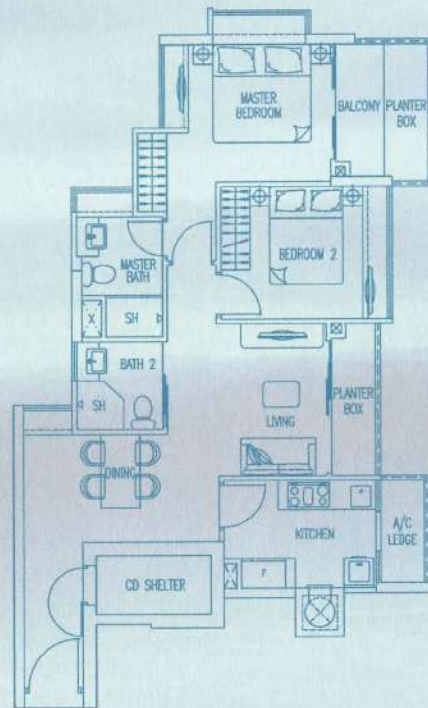
# Type A

(100 sqm / 1076 sq ft)



# Type B

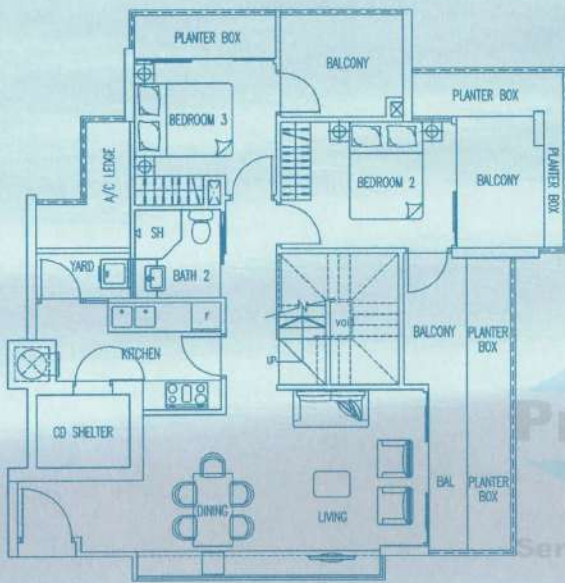
(81 sqm / 872 sq ft)



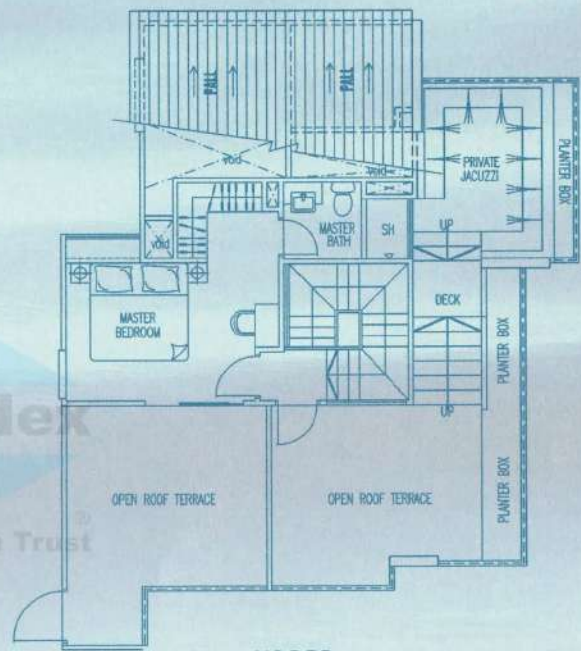
The above plans are subject to changes as may be approved by relevant authorities. Plans are not drawn to scale.

# Type T1

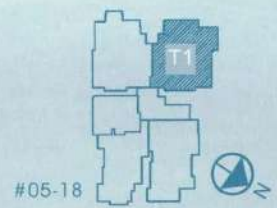
(192 sqm / 2066 sq ft)



LOWER



UPPER

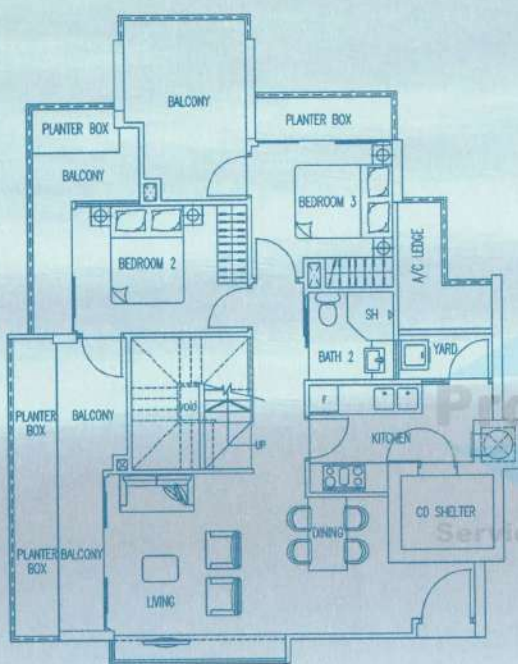


The above plans are subject to changes as may be approved by relevant authorities. Plans are not drawn to scale.

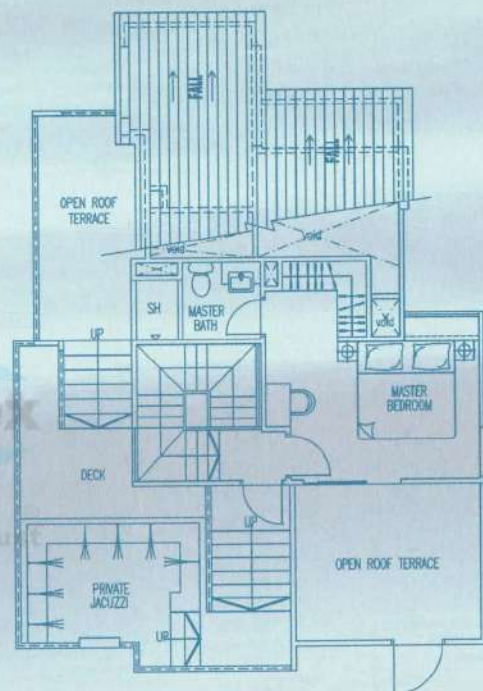


# Type S1

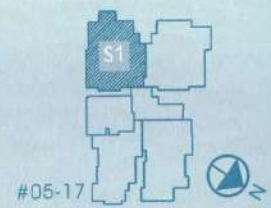
(186 sqm / 2002 sq ft)



LOWER



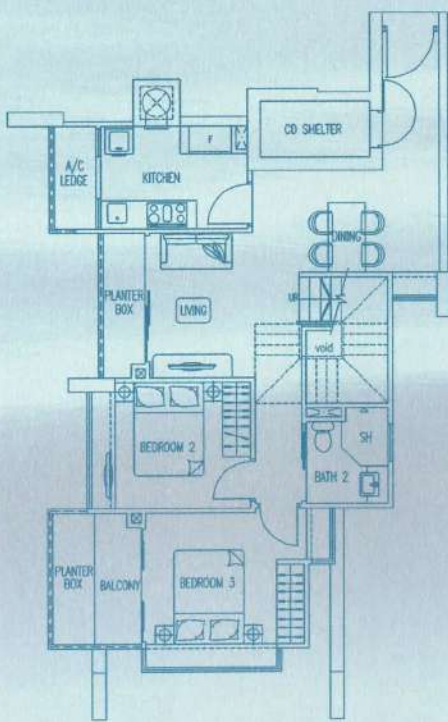
UPPER



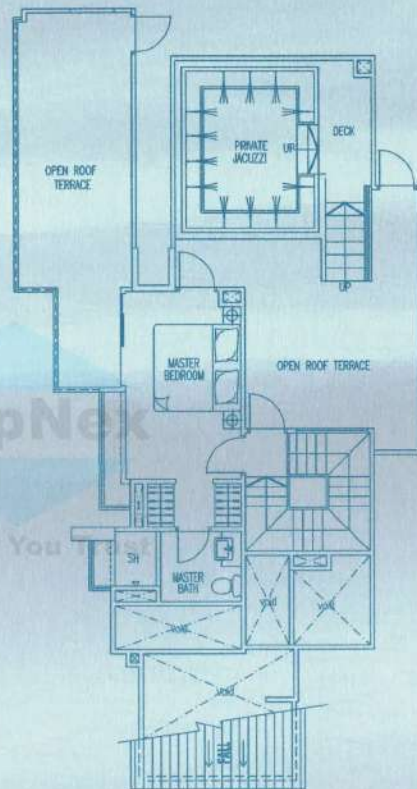
The above plans are subject to changes as may be approved by relevant authorities. Plans are not drawn to scale.

# Type Q1

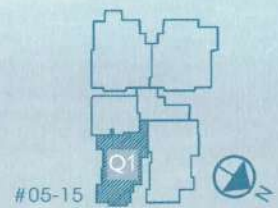
(172 sqm / 1851 sq ft)



LOWER



UPPER



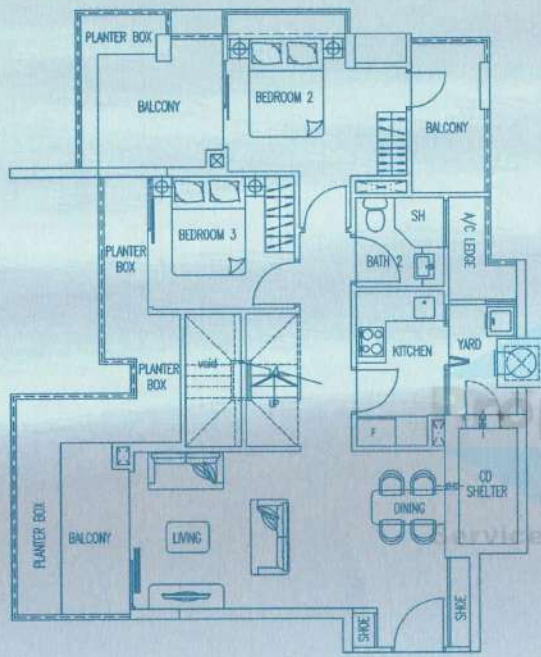
#05-15

The above plans are subject to changes as may be approved by relevant authorities. Plans are not drawn to scale.

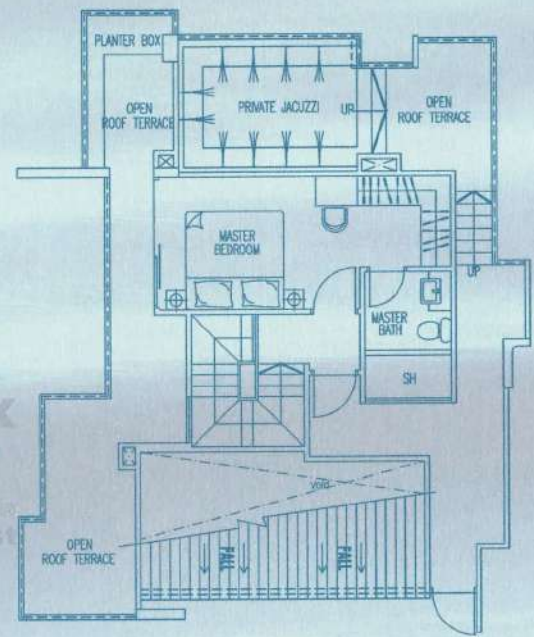


# Type N1

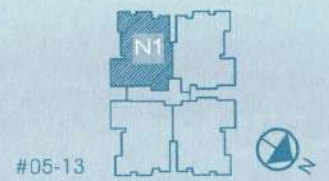
(189 sqm / 2034 sq ft)



LOWER



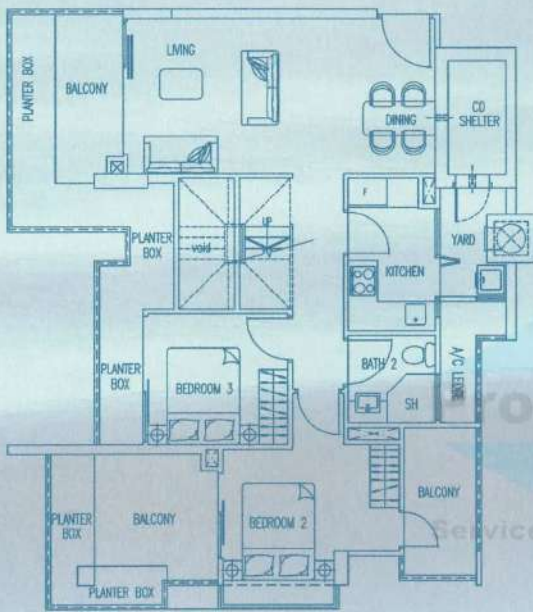
UPPER



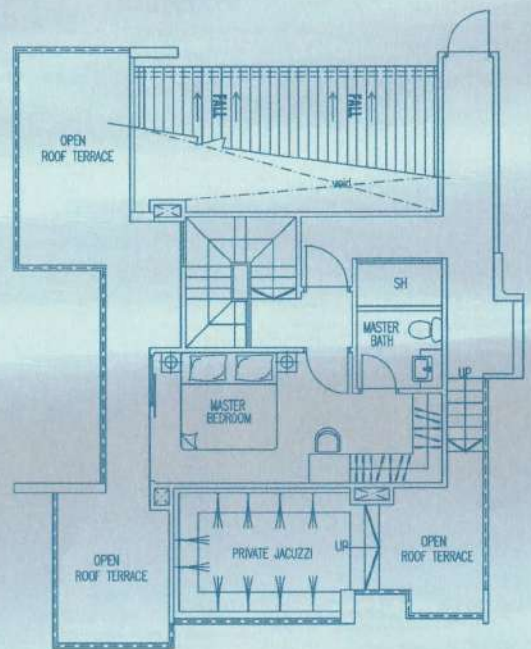
The above plans are subject to changes as may be approved by relevant authorities. Plans are not drawn to scale.

# Type M1

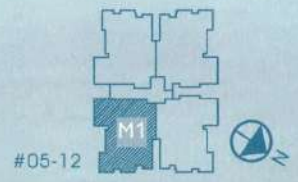
(191 sqm / 2056 sq ft)



LOWER



UPPER

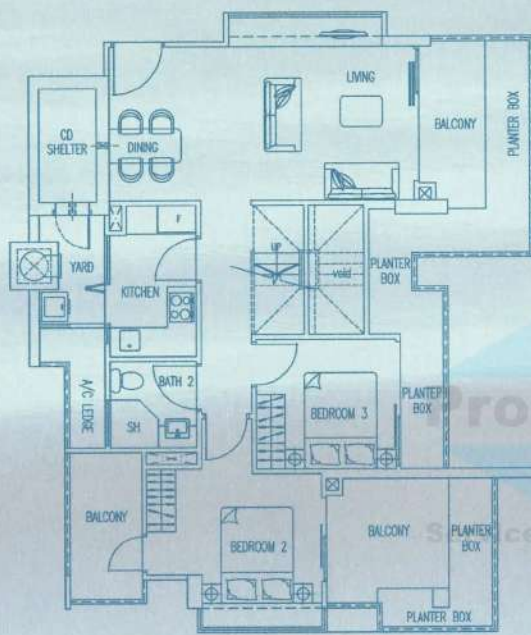


The above plans are subject to changes as may be approved by relevant authorities. Plans are not drawn to scale.

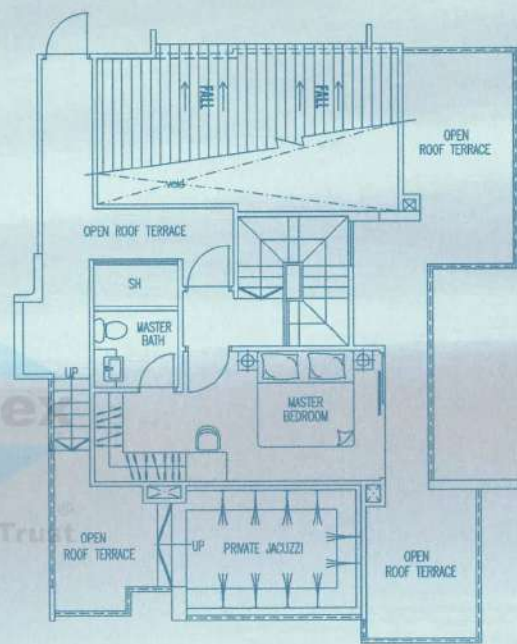


# Type L1

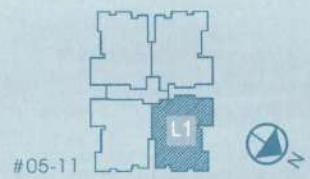
(194 sqm / 2088 sq ft)



LOWER



UPPER



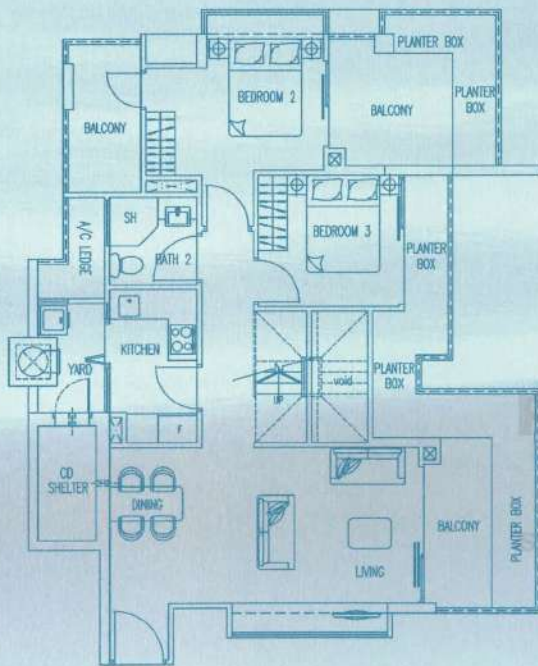
#05-11

The above plans are subject to changes as may be approved by relevant authorities. Plans are not drawn to scale.

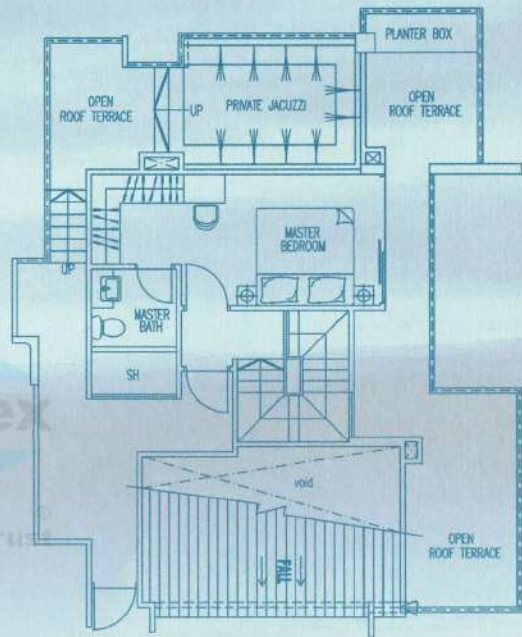


# Type K1

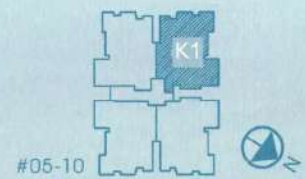
(196 sqm / 2110 sq ft)



LOWER



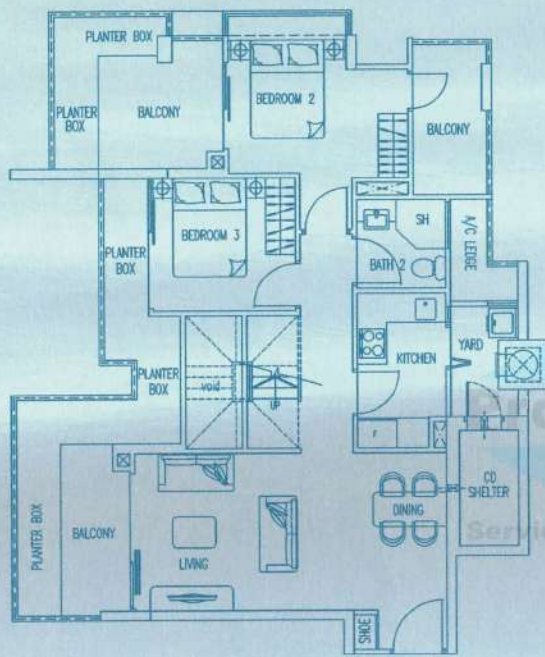
UPPER



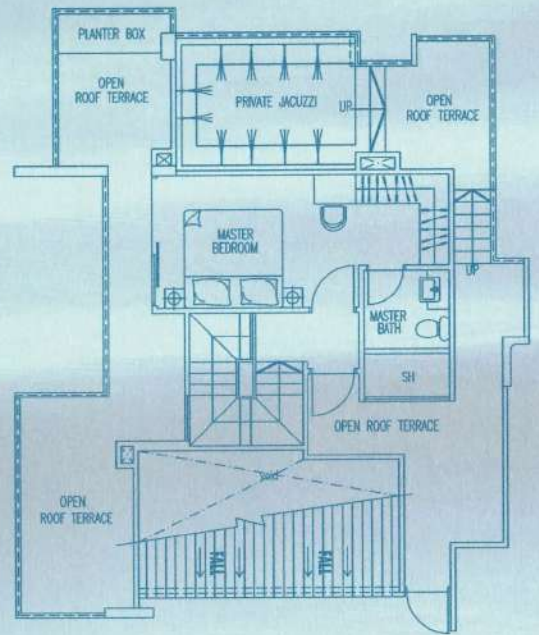
The above plans are subject to changes as may be approved by relevant authorities. Plans are not drawn to scale.

# Type J1

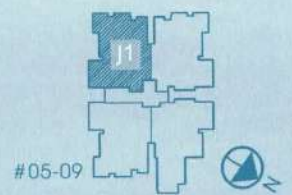
(194 sqm / 2088 sq ft)



LOWER



UPPER

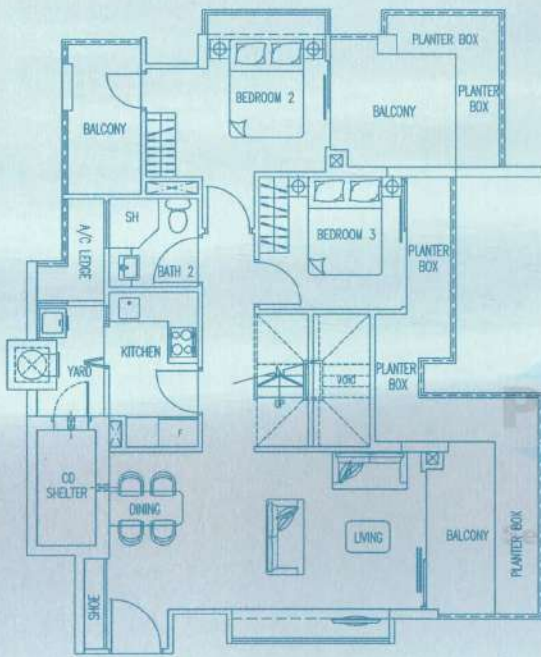


The above plans are subject to changes as may be approved by relevant authorities. Plans are not drawn to scale.

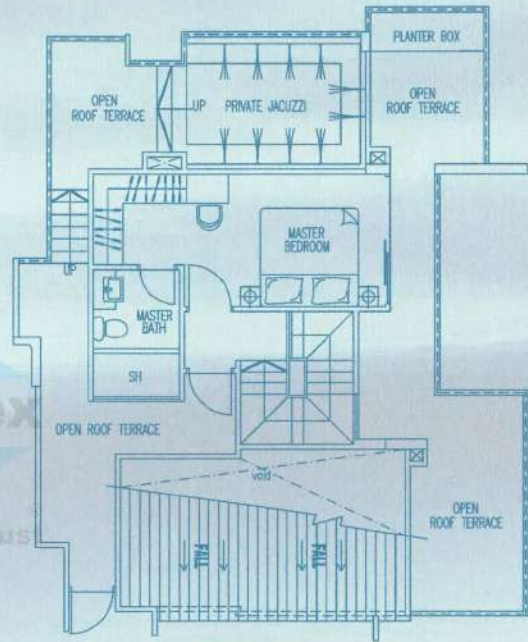


# Type F1

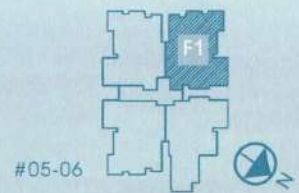
(195 sqm / 2099 sq ft)



LOWER



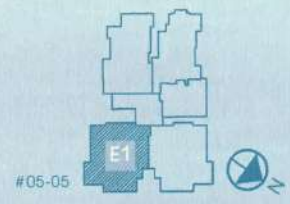
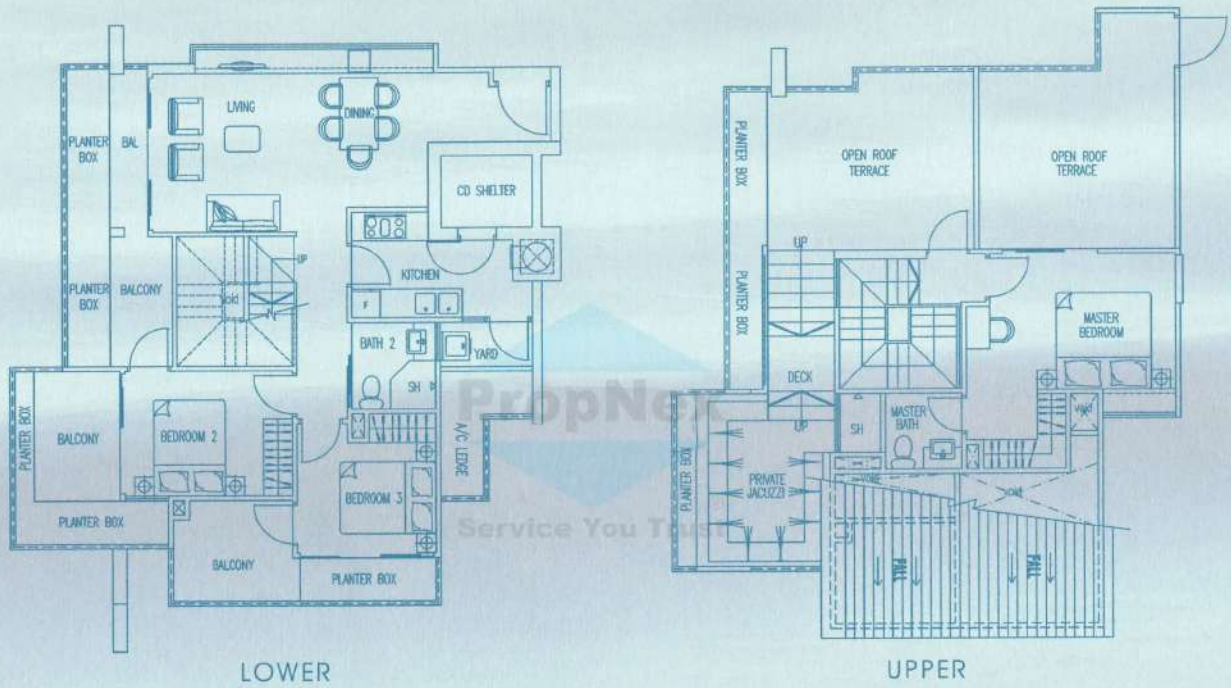
UPPER



The above plans are subject to changes as may be approved by relevant authorities. Plans are not drawn to scale.

# Type E1

(193 sqm / 2077 sq ft)

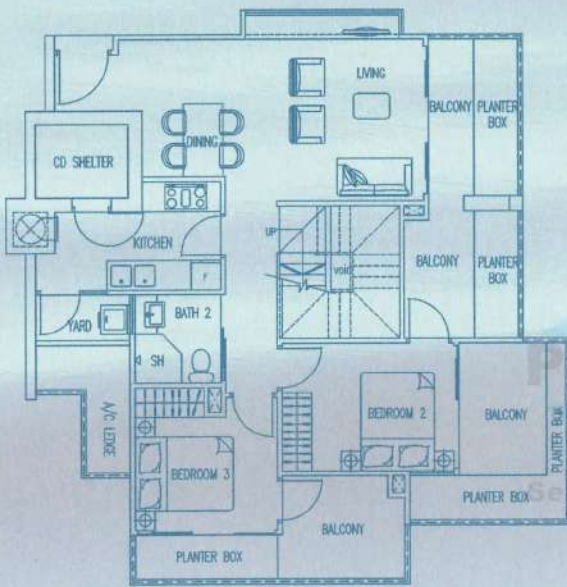


The above plans are subject to changes as may be approved by relevant authorities. Plans are not drawn to scale.

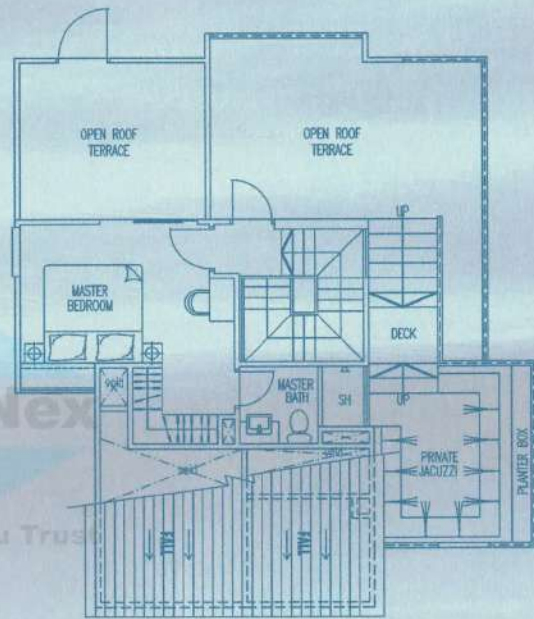


# Type D1

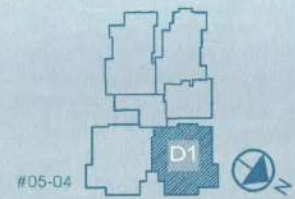
(188 sqm / 2023 sq ft)



LOWER



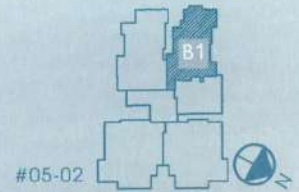
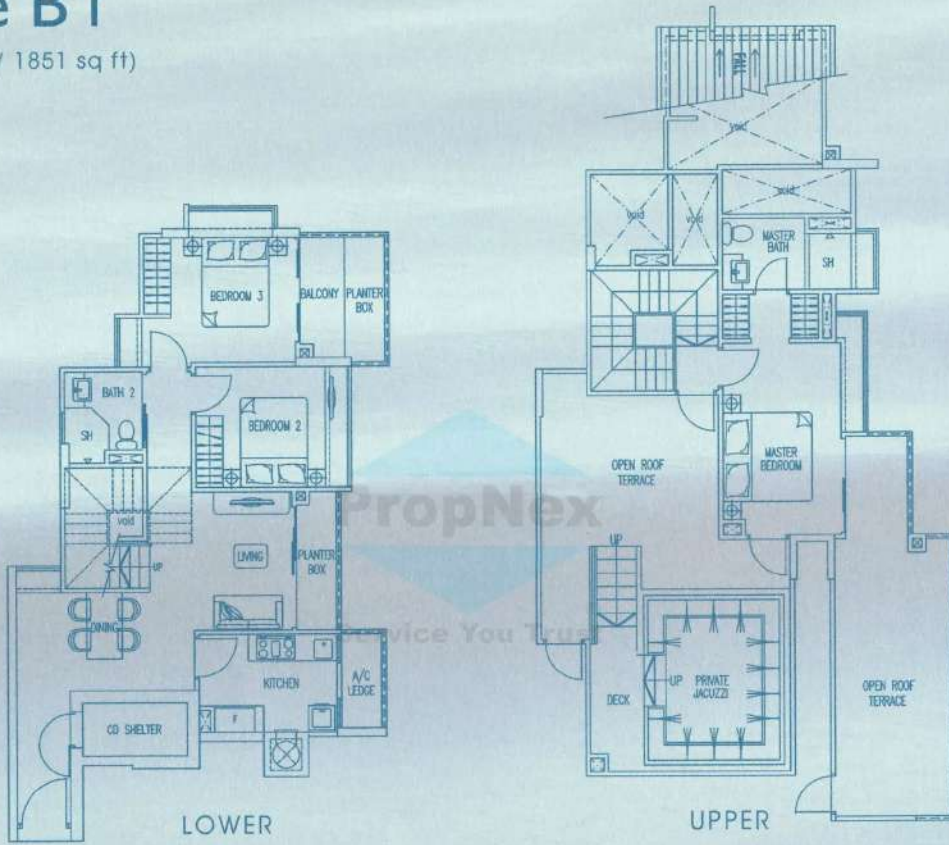
UPPER



The above plans are subject to changes as may be approved by relevant authorities. Plans are not drawn to scale.

# Type B1

(172 sqm / 1851 sq ft)

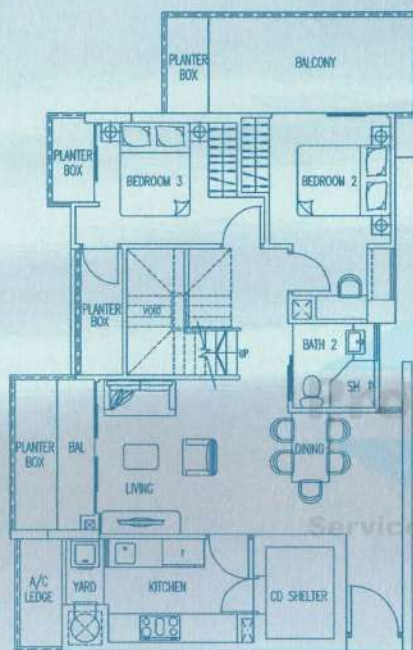


The above plans are subject to changes as may be approved by relevant authorities. Plans are not drawn to scale.

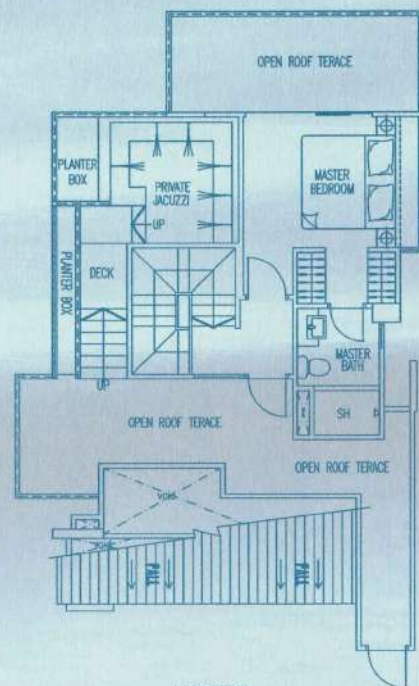


# Type A1

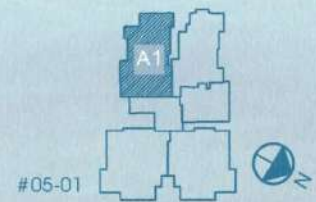
(174 sqm / 1873 sq ft)



LOWER



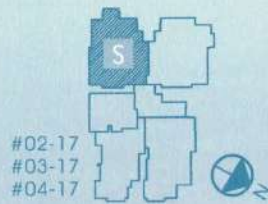
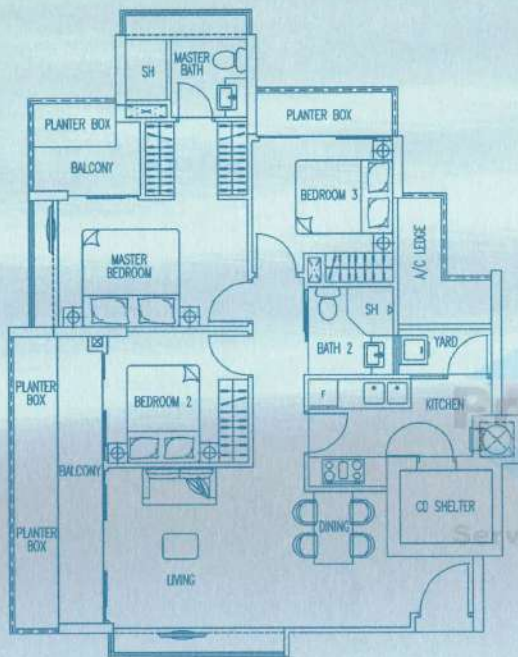
UPPER



The above plans are subject to changes as may be approved by relevant authorities. Plans are not drawn to scale.

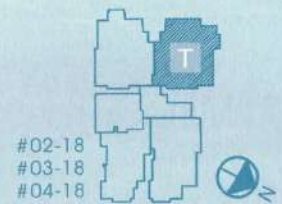
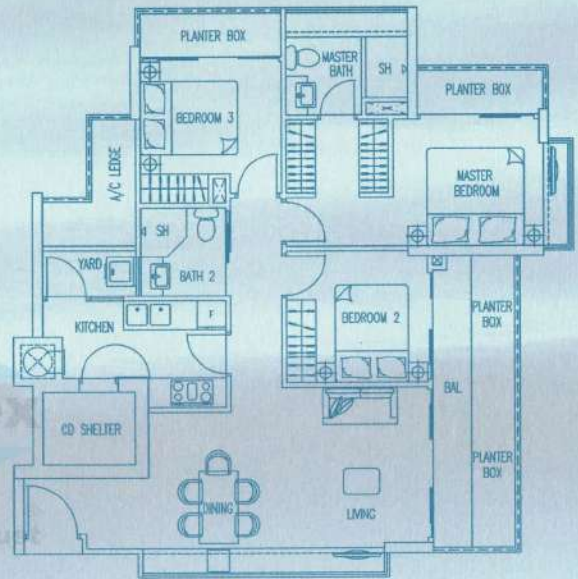
# Type S

(107 sqm / 1152 sq ft)



# Type T

(106 sqm / 1141 sq ft)

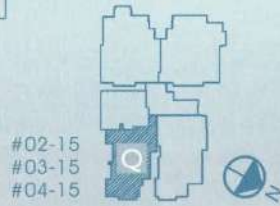
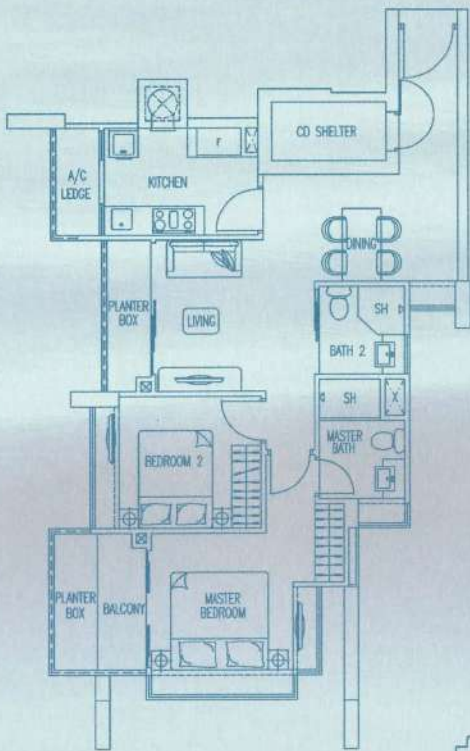


The above plans are subject to changes as may be approved by relevant authorities. Plans are not drawn to scale.



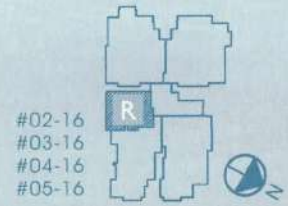
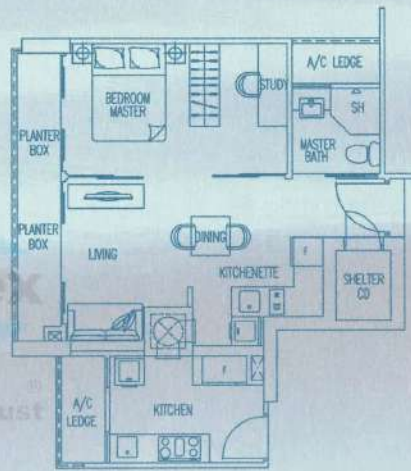
# Type Q

(81 sqm / 872 sq ft)



# Type R

(47 sqm / 506 sq ft)

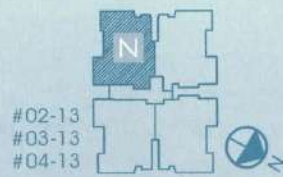
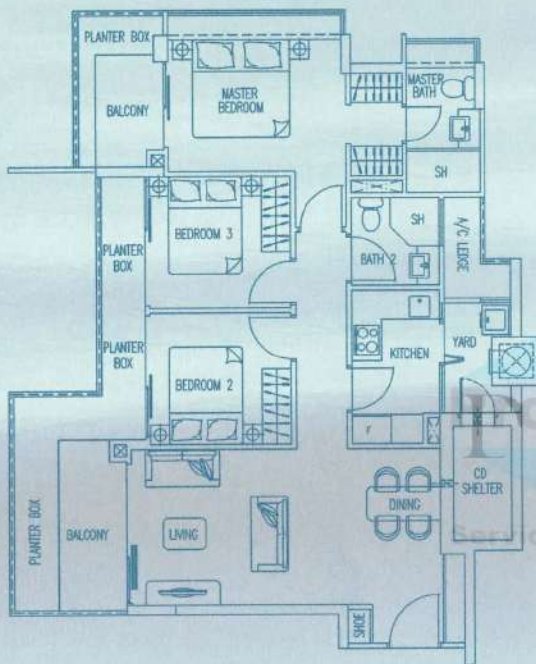


PropNex  
Service You Trust

The above plans are subject to changes as may be approved by relevant authorities. Plans are not drawn to scale.

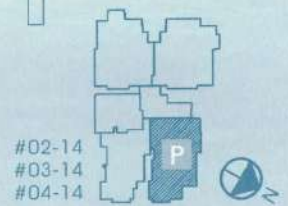
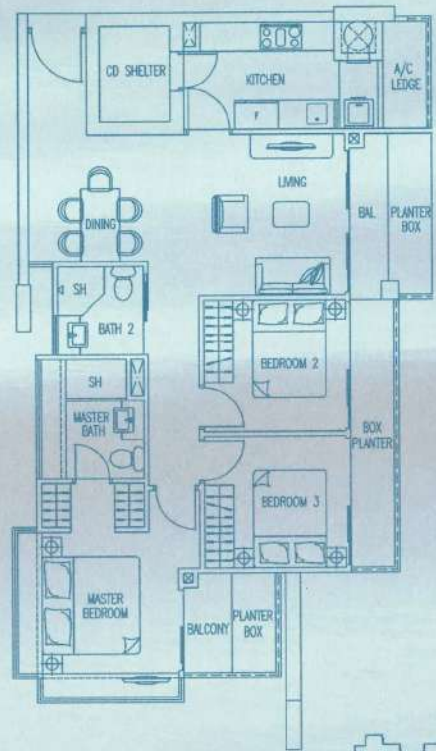
# Type N

(108 sqm / 1162 sq ft)



# Type P

(101 sqm / 1087 sq ft)

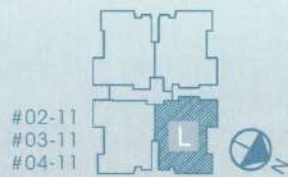
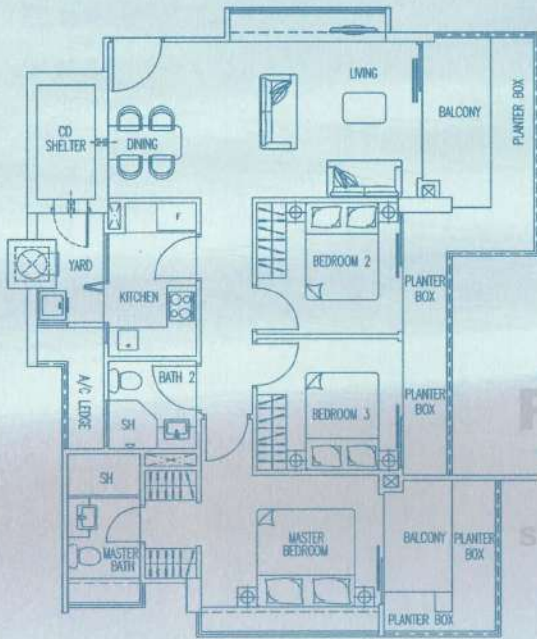


The above plans are subject to changes as may be approved by relevant authorities. Plans are not drawn to scale.



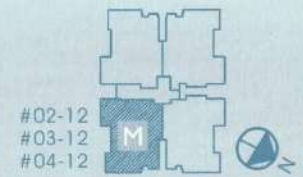
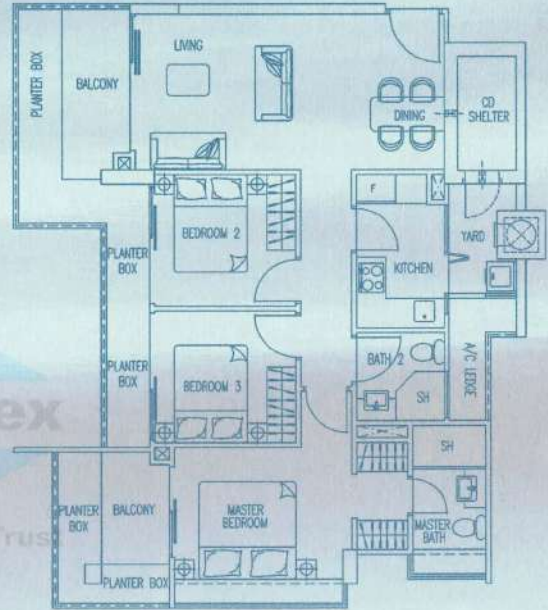
# Type L

(110 sqm / 1184 sq ft)



# Type M

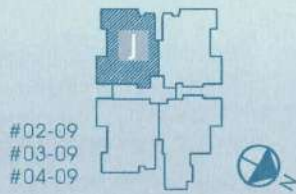
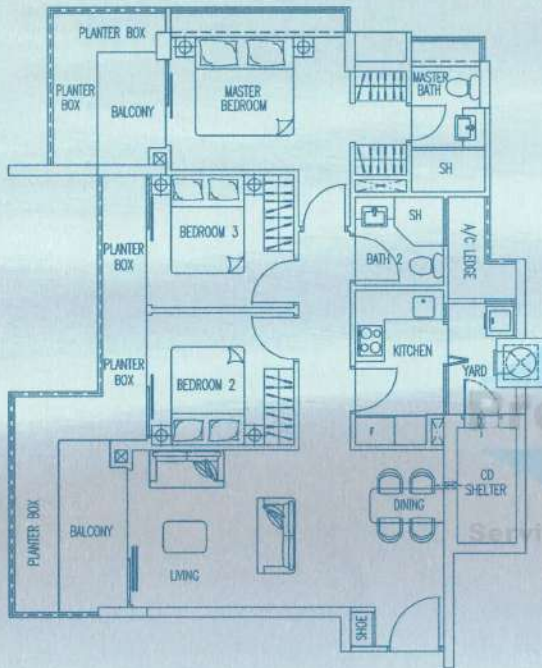
(108 sqm / 1162 sq ft)



The above plans are subject to changes as may be approved by relevant authorities. Plans are not drawn to scale.

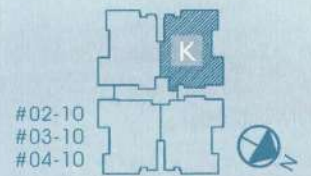
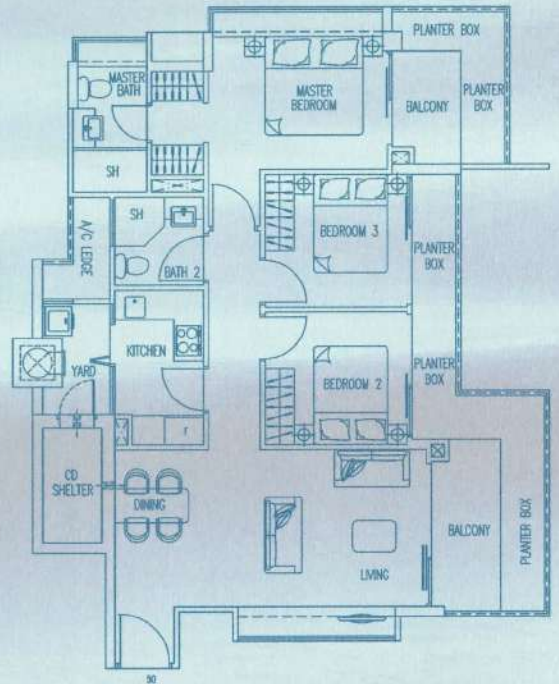
# Type J

(109 sqm / 1173 sq ft)



# Type K

(111 sqm / 1195 sq ft)

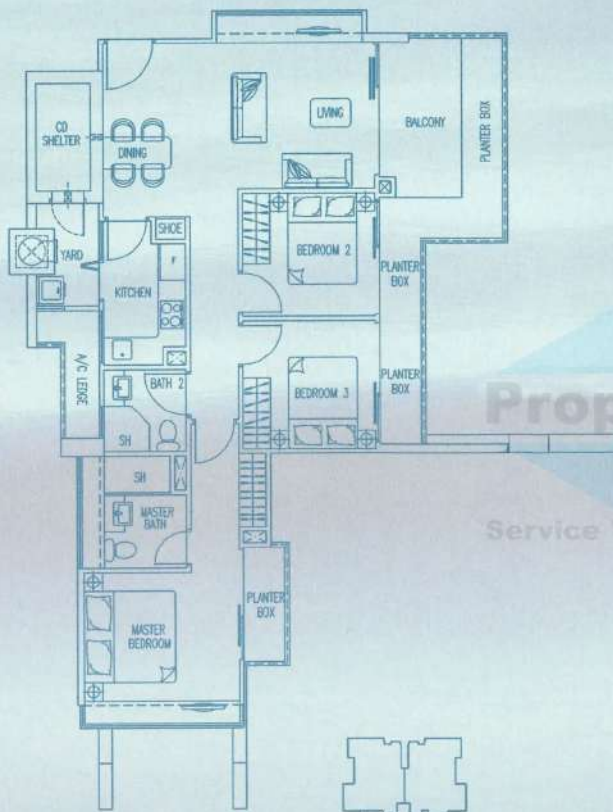


The above plans are subject to changes as may be approved by relevant authorities. Plans are not drawn to scale.

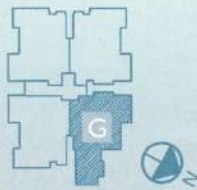


# Type G

(108 sqm / 1162 sq ft)

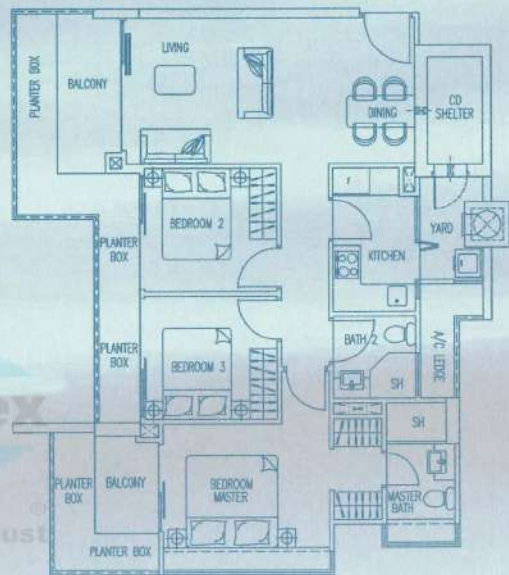


#02-07  
#03-07  
#04-07

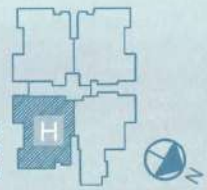


# Type H

(108 sqm / 1162 sq ft)



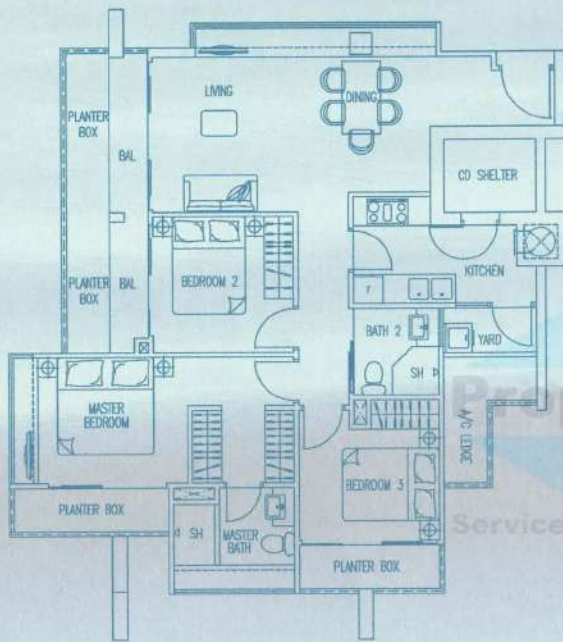
#02-08  
#03-08  
#04-08



The above plans are subject to changes as may be approved by relevant authorities. Plans are not drawn to scale.

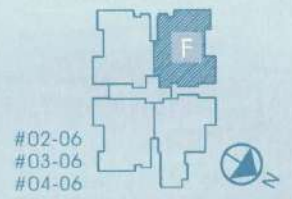
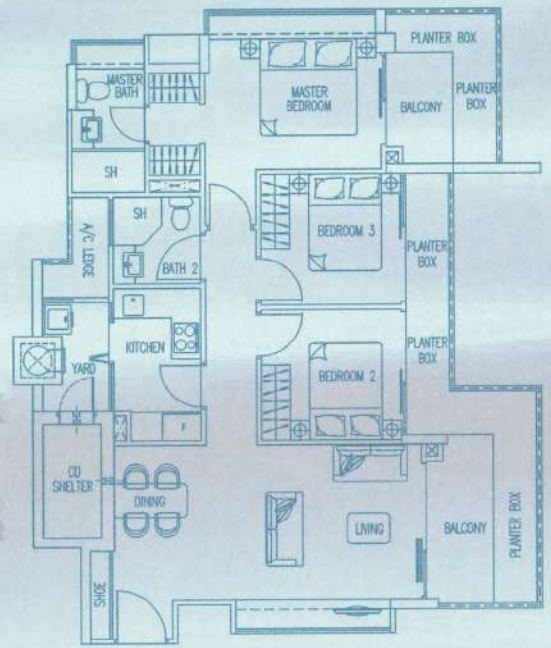
# Type E

(108 sqm / 1162 sq ft)



# Type F

(111 sqm / 1195 sq ft)



The above plans are subject to changes as may be approved by relevant authorities. Plans are not drawn to scale.