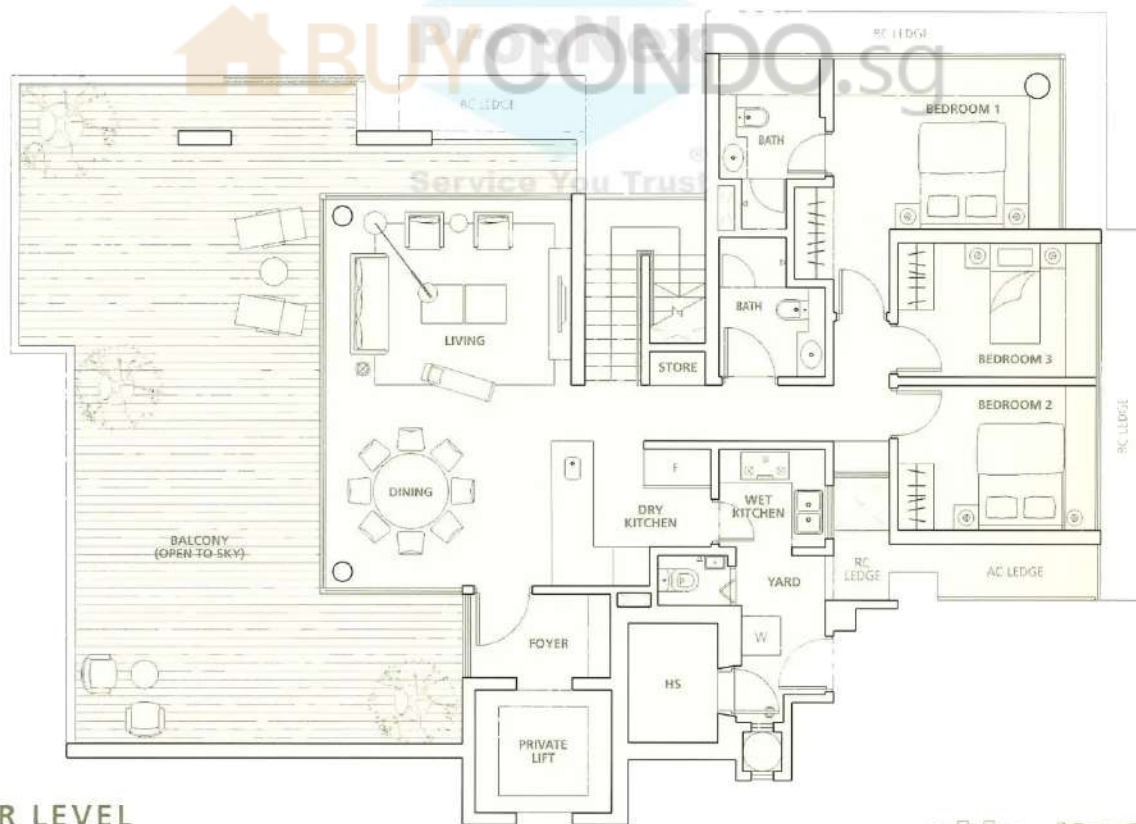


# TYPE PC - PENTHOUSE

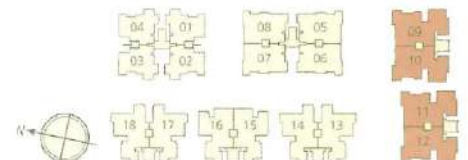
#05-09 to #05-12  
 300 sq m / 3,229 sq ft



UPPER LEVEL



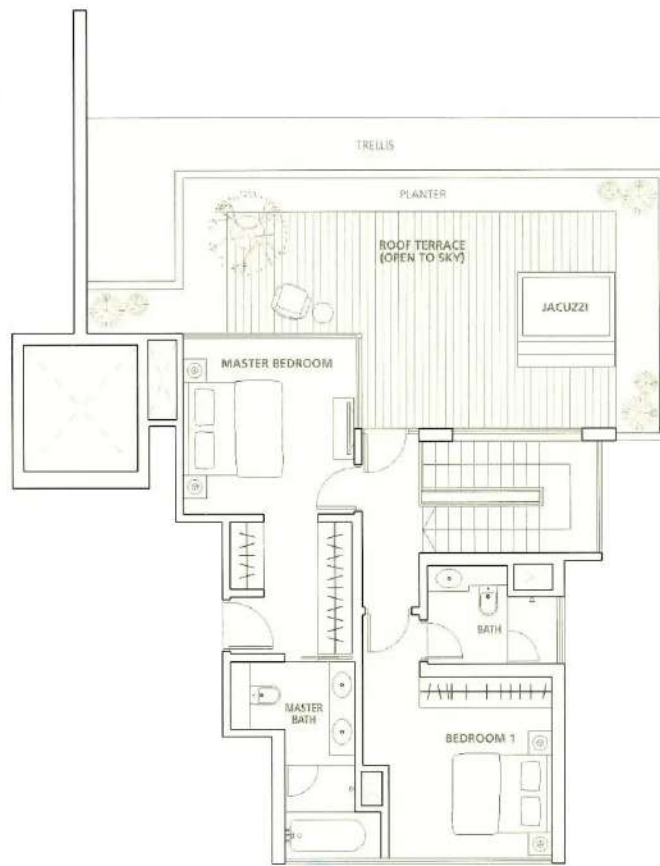
LOWER LEVEL



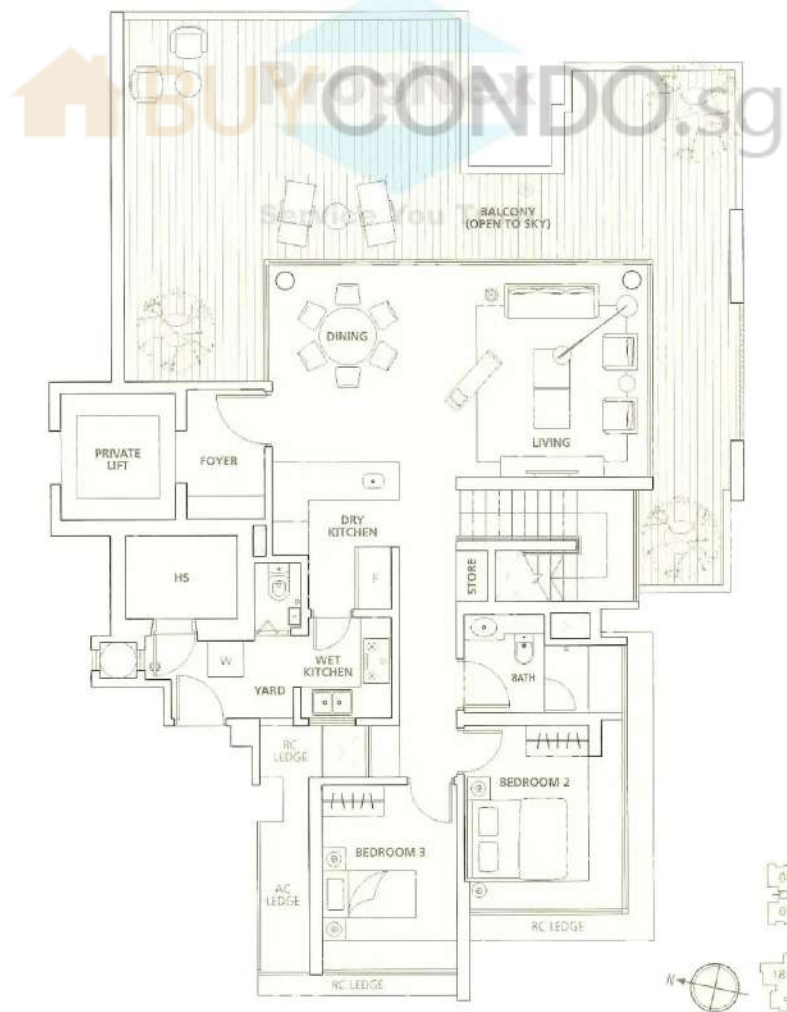
The above plans are subject to change as may be approved by the relevant authority. Areas are approximate measurements and subject to final survey. Plans are not to scale.

**TYPE PB2 - PENTHOUSE**

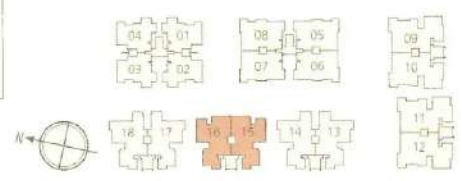
#05-15, #05-16  
 274 sq m / 2,949 sq ft



**UPPER LEVEL**



**LOWER LEVEL**



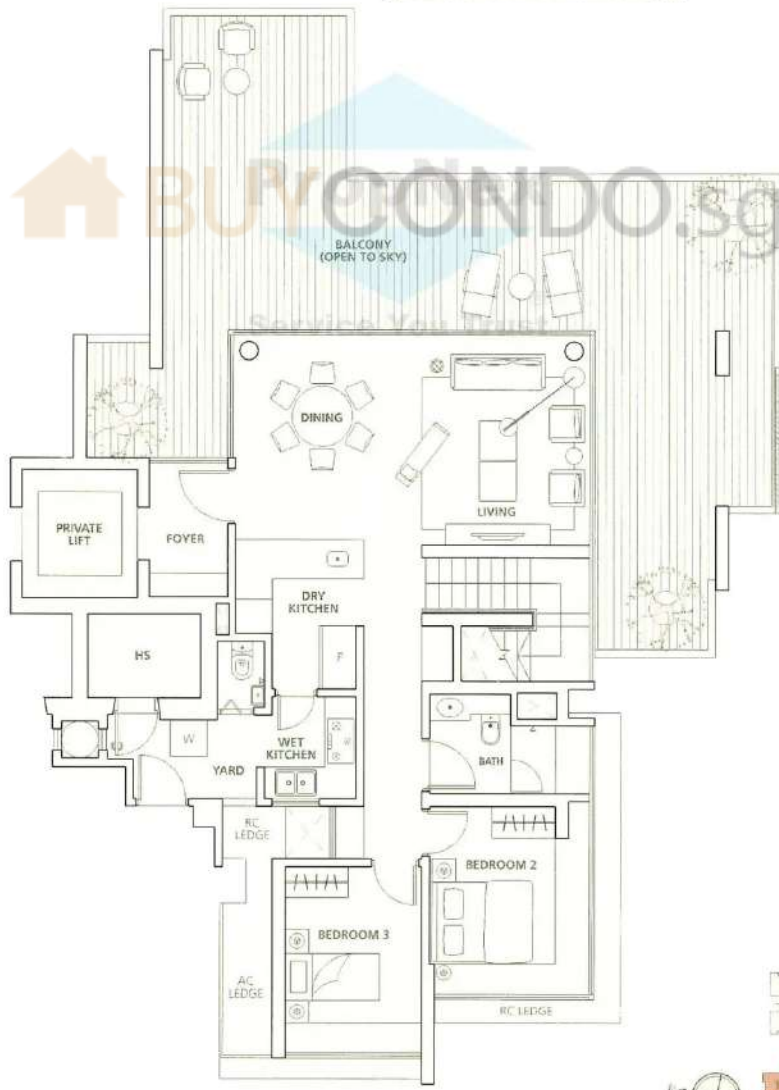
The above plans are subject to change as may be approved by the relevant authority. Areas are approximate measurements and subject to final survey. Plans are not to scale.

**TYPE PB1 - PENTHOUSE**

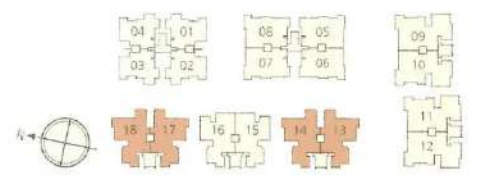
#05-13, #05-14,  
#05-17, #05-18  
268 sq m / 2,885 sq ft



**UPPER LEVEL**



**LOWER LEVEL**

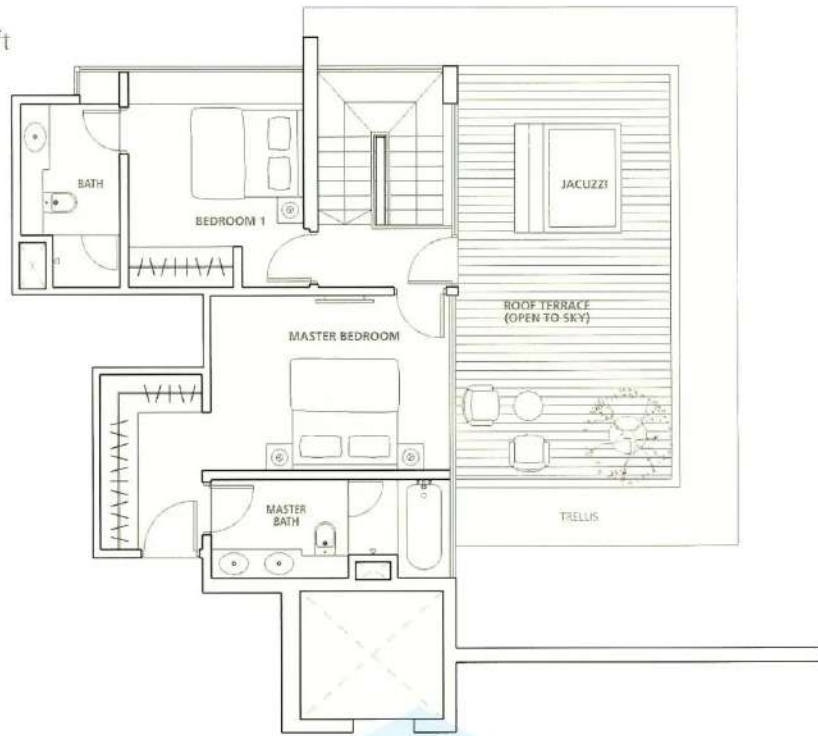


The above plans are subject to change as may be approved by the relevant authority. Areas are approximate measurements and subject to final survey. Plans are not to scale.

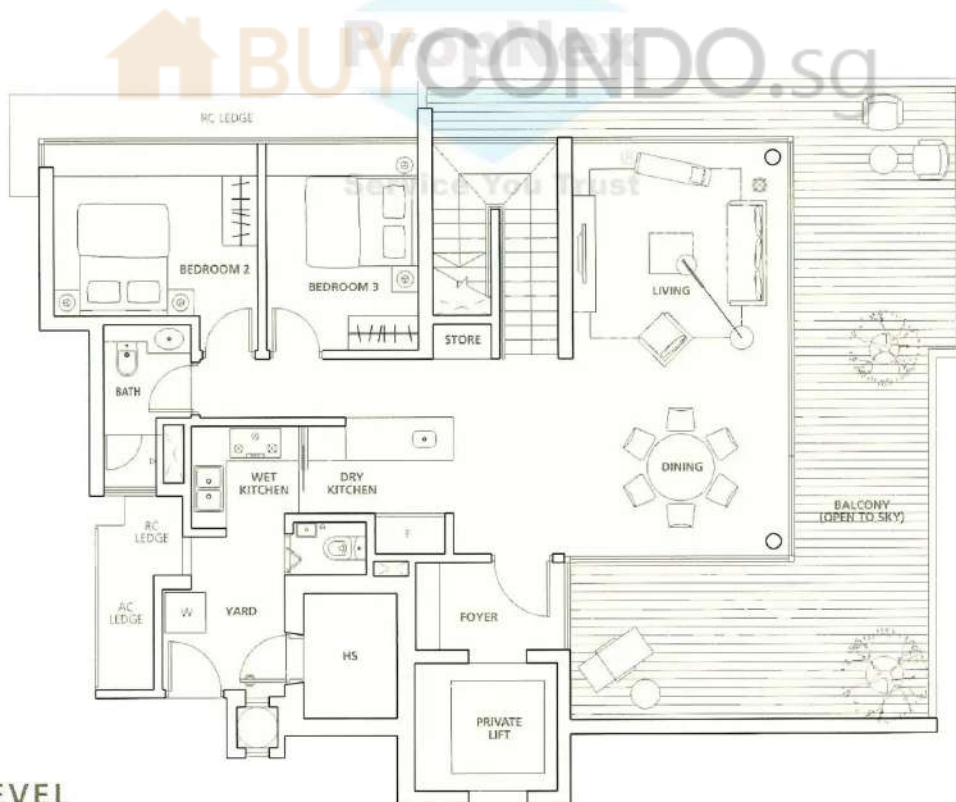
# TYPE PB - PENTHOUSE

#05-05 to #05-08

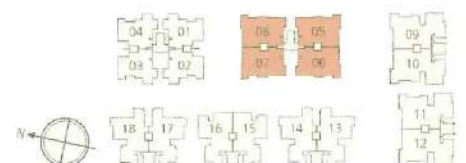
234 sq m / 2,519 sq ft



## UPPER LEVEL



## LOWER LEVEL

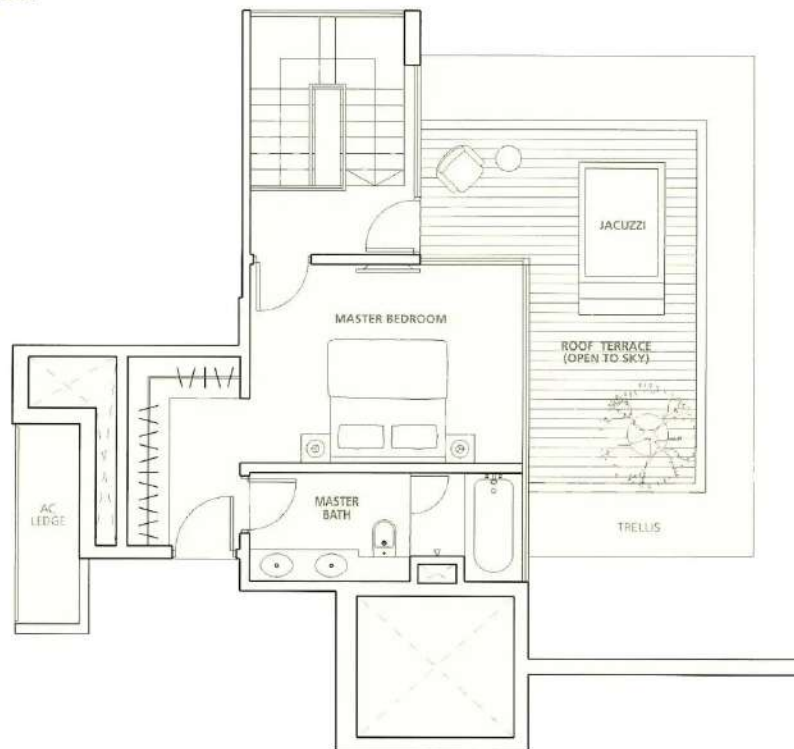


The above plans are subject to change as may be approved by the relevant authority. Areas are approximate measurements and subject to final survey. Plans are not to scale.

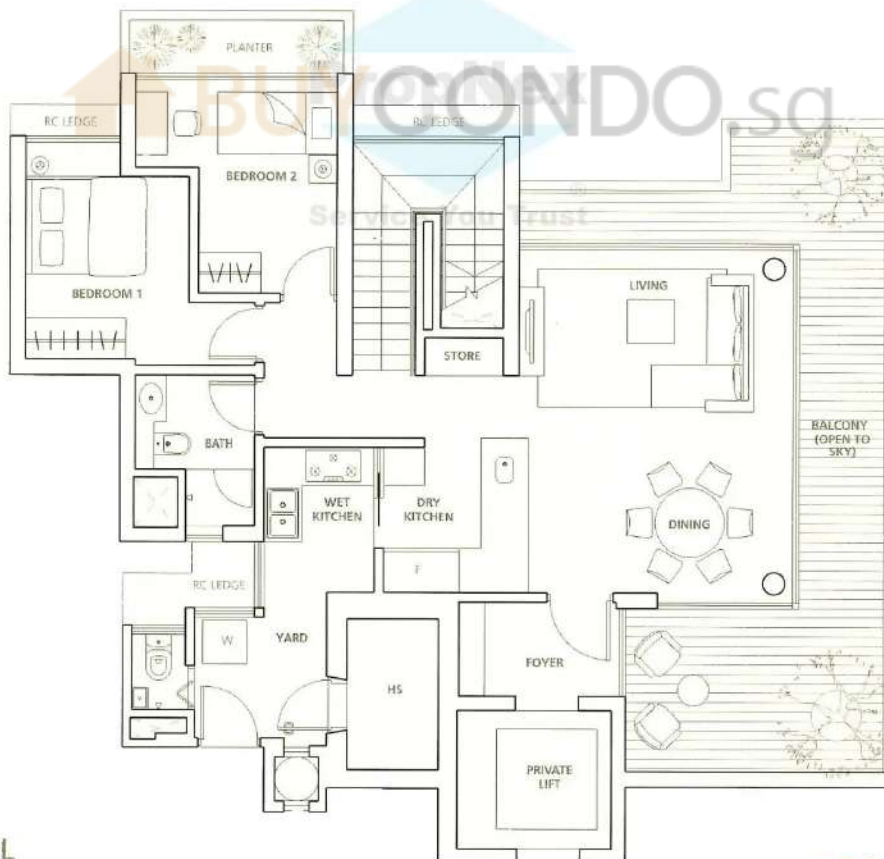
## TYPE PA - PENTHOUSE

#05-01 to #05-04

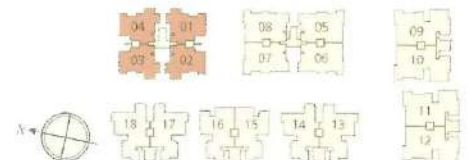
190 sq m / 2,045 sq ft



## UPPER LEVEL



## LOWER LEVEL

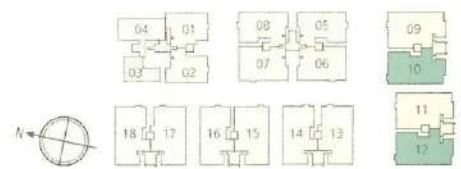
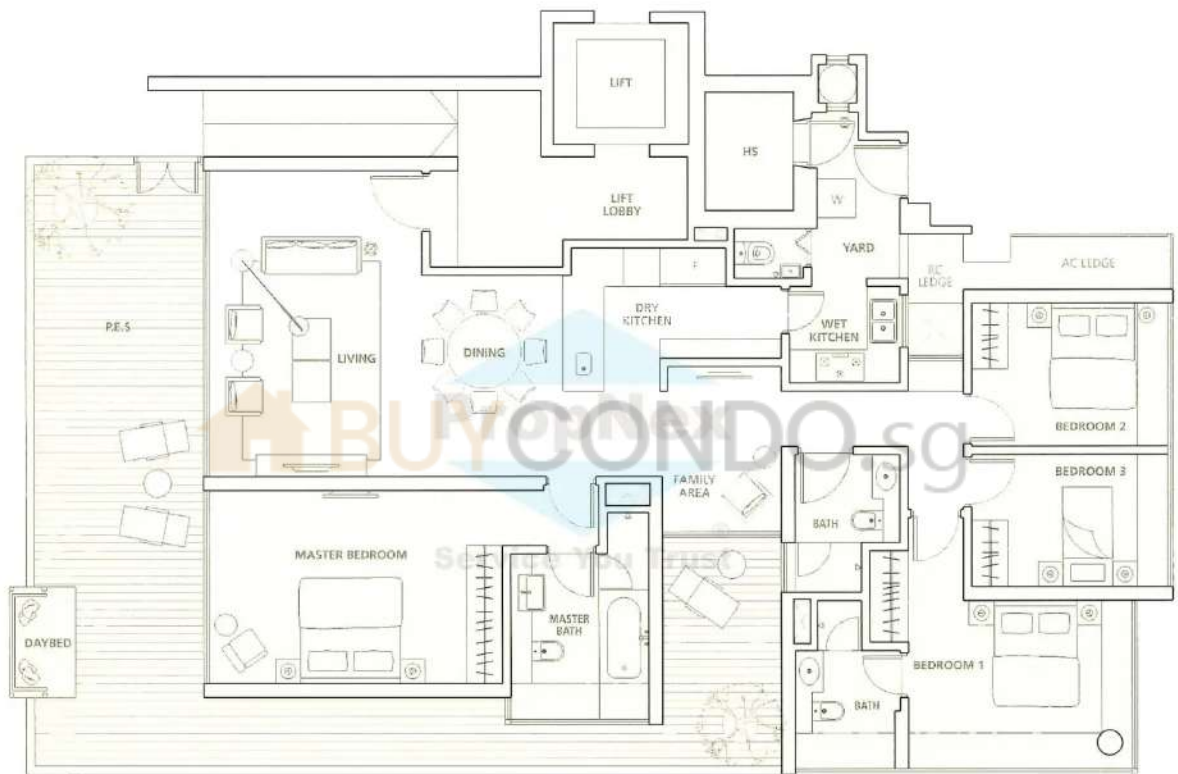


The above plans are subject to change as may be approved by the relevant authority. Areas are approximate measurements and subject to final survey. Plans are not to scale.

# TYPE CG2 : 4 - BEDROOM

#01-10, #01-12

214 sq m / 2,303 sq ft

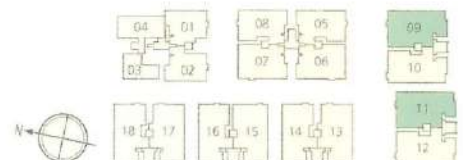
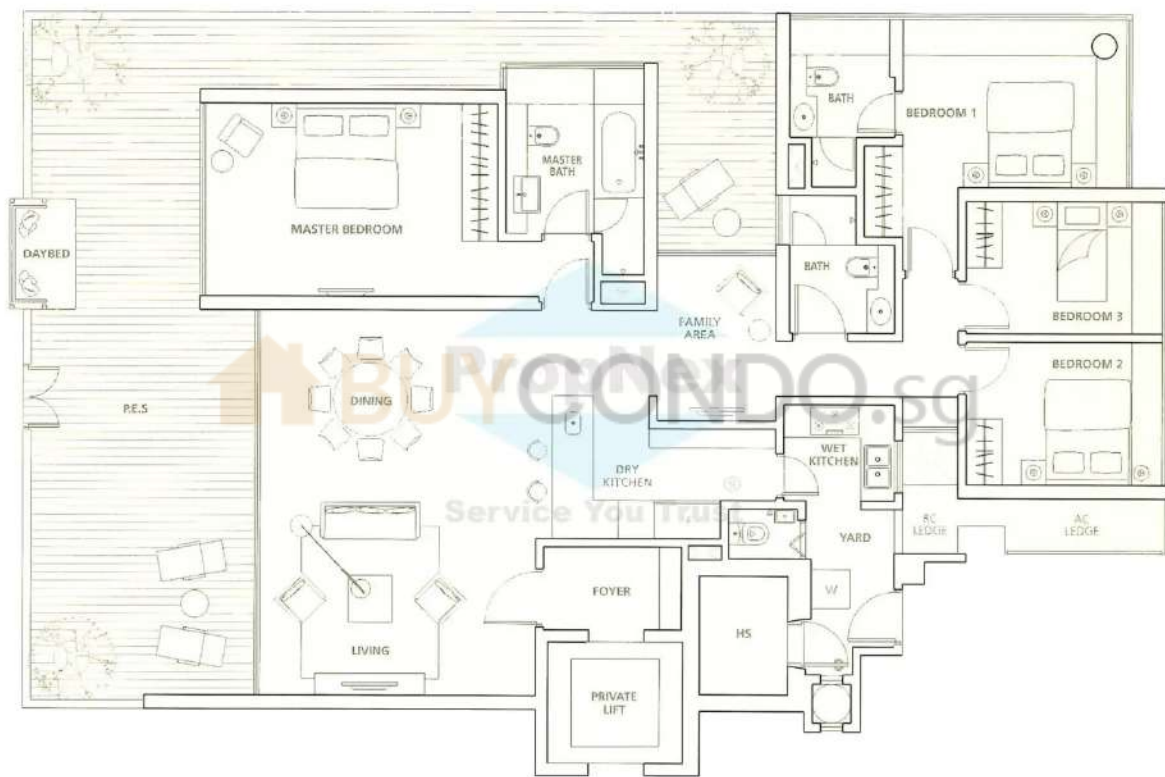


The above plans are subject to change as may be approved by the relevant authority. Areas are approximate measurements and subject to final survey. Plans are not to scale.

# TYPE CG1 : 4 - BEDROOM

#01-09, #01-11

236 sq m / 2,540 sq ft



The above plans are subject to change as may be approved by the relevant authority. Areas are approximate measurements and subject to final survey. Plans are not to scale.

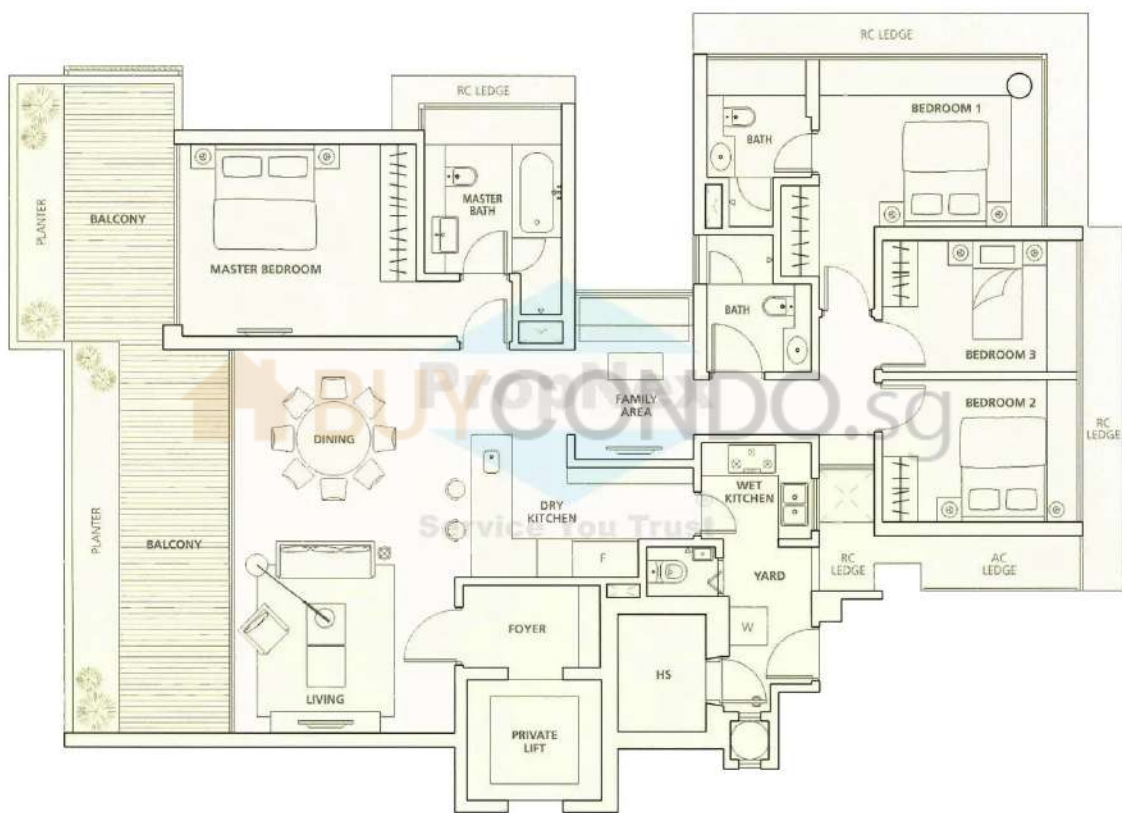
## TYPE C : 4 - BEDROOM

#02-09 to #02-12

#03-09 to #03-12

#04-09 to #04-12

193 sq m / 2,077 sq ft



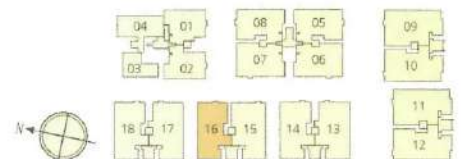
The above plans are subject to change as may be approved by the relevant authority. Areas are approximate measurements and subject to final survey. Plans are not to scale.



**TYPE BF4 : 3 - BEDROOM + FAMILY**

#01-16

203 sq m / 2,185 sq ft

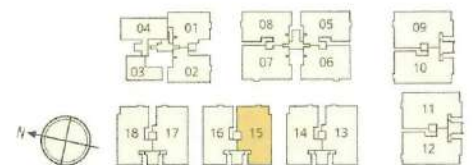


The above plans are subject to change as may be approved by the relevant authority. Areas are approximate measurements and subject to final survey. Plans are not to scale.

# TYPE BF3 : 3 - BEDROOM + FAMILY

#01-15

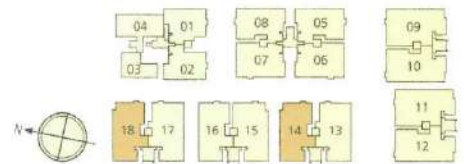
220 sq m / 2,368 sq ft



The above plans are subject to change as may be approved by the relevant authority. Areas are approximate measurements and subject to final survey. Plans are not to scale.

# TYPE BF2 : 3 - BEDROOM + FAMILY

#01-14, #01-18  
 207 sq m / 2,228 sq ft

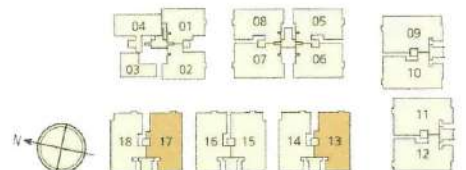


The above plans are subject to change as may be approved by the relevant authority. Areas are approximate measurements and subject to final survey. Plans are not to scale.

# TYPE BF1 : 3 - BEDROOM + FAMILY

#01-13, #01-17

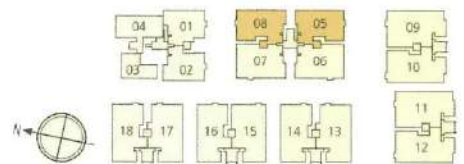
220 sq m / 2,368 sq ft



The above plans are subject to change as may be approved by the relevant authority. Areas are approximate measurements and subject to final survey. Plans are not to scale.

# TYPE BG2 : 3 - BEDROOM

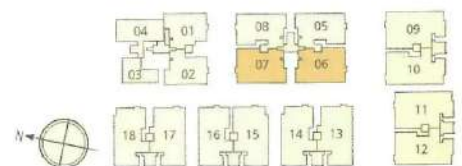
#01-05, #01-08  
171 sq m / 1,841 sq ft



The above plans are subject to change as may be approved by the relevant authority. Areas are approximate measurements and subject to final survey. Plans are not to scale.

### TYPE BG1 : 3 - BEDROOM

#01-06, #01-07  
 190 sq m / 2,045 sq ft



The above plans are subject to change as may be approved by the relevant authority. Areas are approximate measurements and subject to final survey. Plans are not to scale.

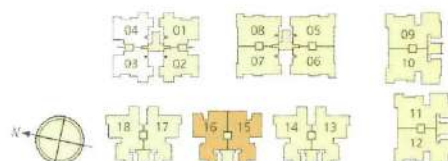
## TYPE B2 : 3 - BEDROOM

#02-15, #02-16

#03-15, #03-16

#04-15, #04-16

163 sq m / 1,755 sq ft



The above plans are subject to change as may be approved by the relevant authority. Areas are approximate measurements and subject to final survey. Plans are not to scale.

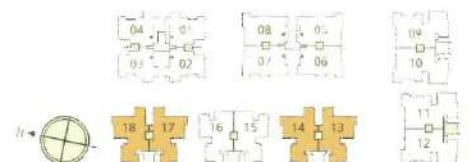
## TYPE B1 : 3 - BEDROOM

#02-13, #02-14, #02-17, #02-18

#03-13, #03-14, #03-17, #03-18

#04-13, #04-14, #04-17, #04-18

165 sq m / 1,776 sq ft



The above plans are subject to change as may be approved by the relevant authority. Areas are approximate measurements and subject to final survey. Plans are not to scale.



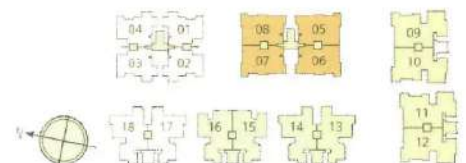
## TYPE B : 3 - BEDROOM

#02-05 to #02-08

#03-05 to #03-08

#04-05 to #04-08

146 sq m / 1,572 sq ft

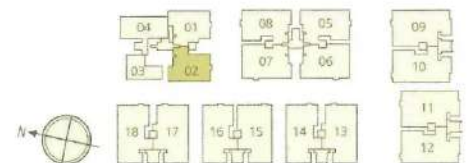


The above plans are subject to change as may be approved by the relevant authority. Areas are approximate measurements and subject to final survey. Plans are not to scale.

# TYPE AG2 : 2 - BEDROOM

#01-02

140 sq m / 1,507 sq ft

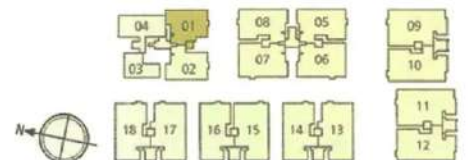
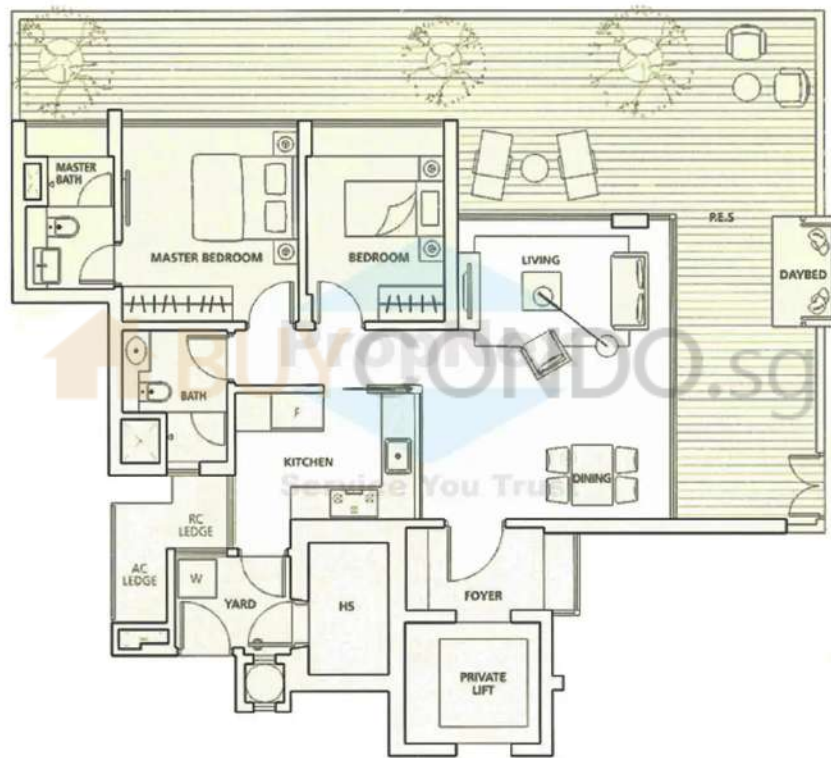


The above plans are subject to change as may be approved by the relevant authority. Areas are approximate measurements and subject to final survey. Plans are not to scale.

# TYPE AG1 : 2 - BEDROOM

#01-01

145 sq m / 1,561 sq ft



The above plans are subject to change as may be approved by the relevant authority. Areas are approximate measurements and subject to final survey. Plans are not to scale.

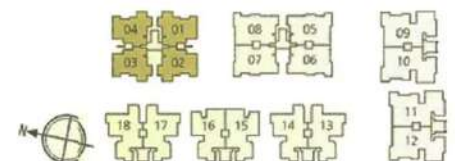
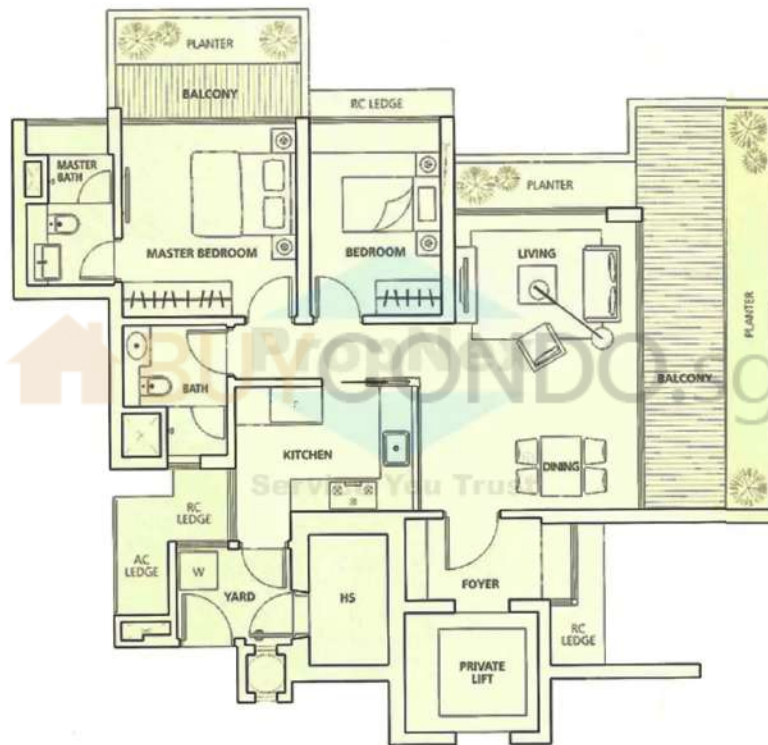
## TYPE A : 2 - BEDROOM

#02-01 to #02-04

#03-01 to #03-04

#04-01 to #04-04

116 sq m / 1,249 sq ft



The above plans are subject to change as may be approved by the relevant authority. Areas are approximate measurements and subject to final survey. Plans are not to scale.