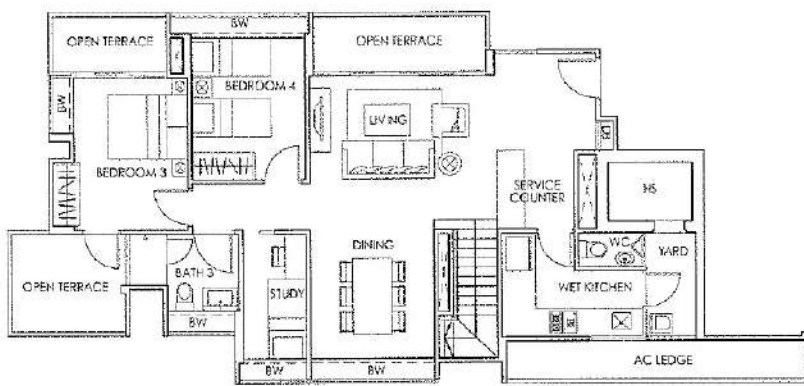


Type C2-P (4-Bedroom Penthouse + Study)

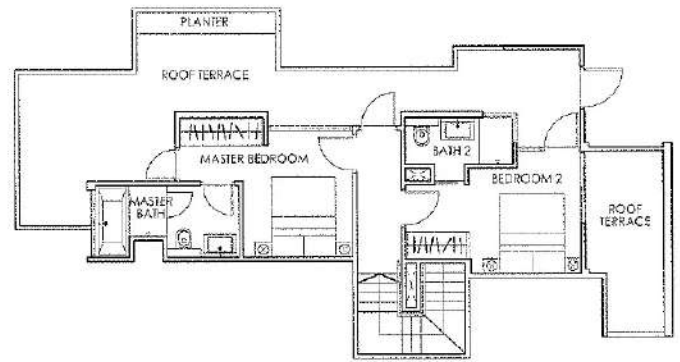
Unit #05-01

Area 2,174 sq ft / 202 sq m

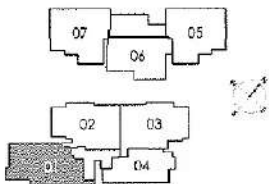
[Inclusive of A/C Ledge, Bay Windows (BW), Planter, Open Terrace and Roof Terrace]



LOWER STOREY



UPPER STOREY



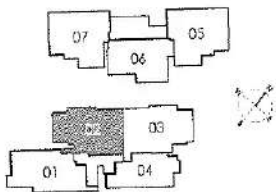
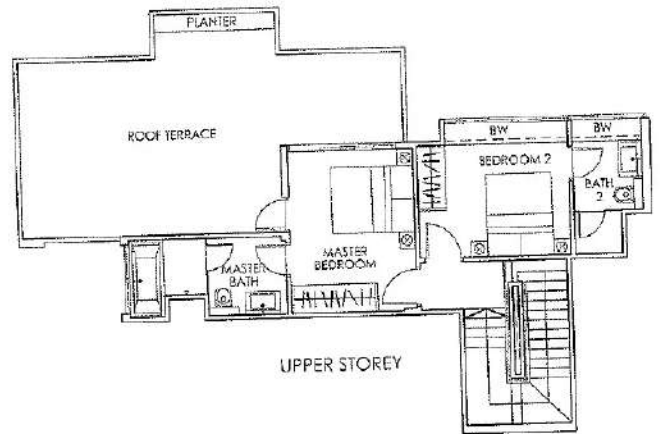
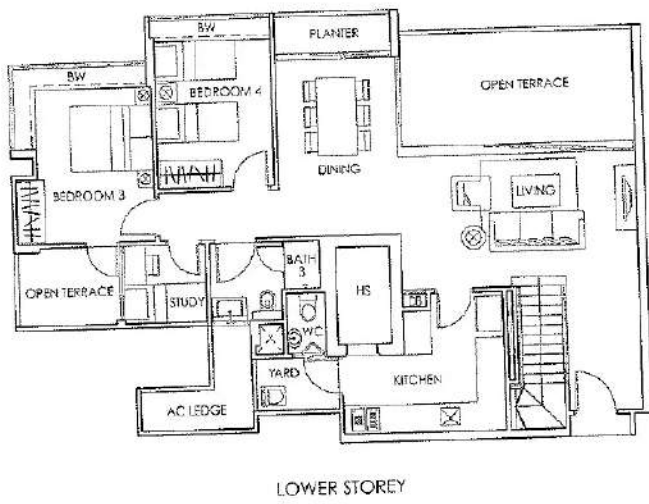
All plans are subject to amendments as approved by the relevant authorities. Floor areas are approximate measurements and subject to final survey.

Type C1-P (4-Bedroom Penthouse + Study)

Unit #06-02

Area 2,239 sq ft / 208 sq m

(Inclusive of A/C Ledge, Bay Windows (BW), Planter, Open Terrace and Roof Terrace)

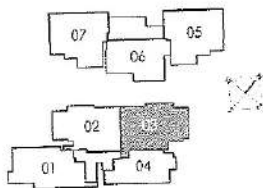
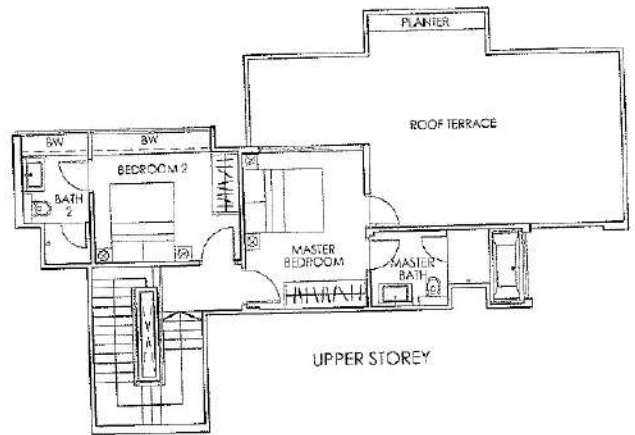


All plans are subject to amendments, as approved by the relevant authorities. Floor areas are approximate measurements and subject to final survey.

Type C-P (4-Bedroom Penthouse + Study)

Unit #06-03

Area 2,303 sq ft / 214 sq m  
 (Inclusive of A/C Ledge, Bay Windows (BW), Planter, Open Terrace and Roof Terrace)



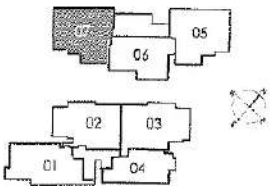
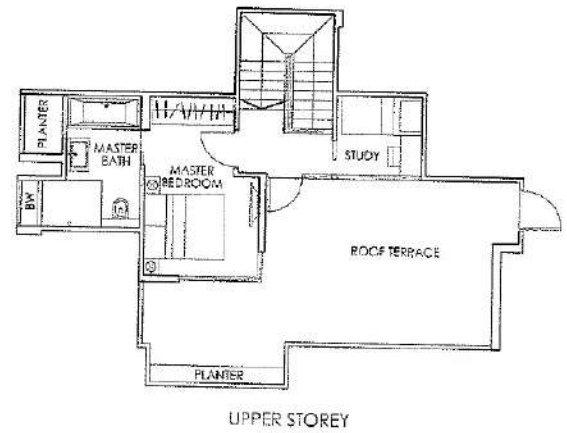
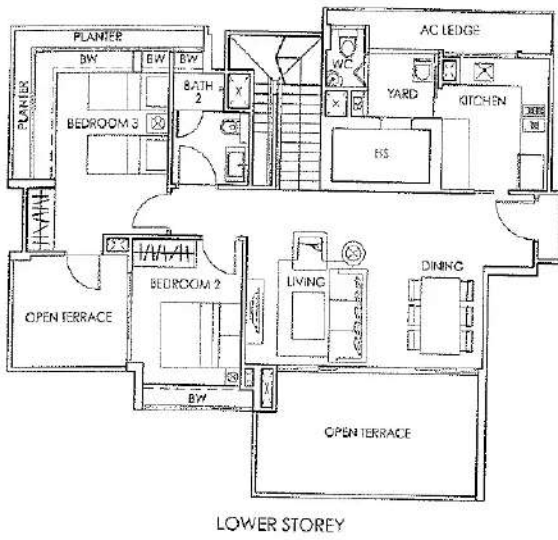
All plans are subject to amendments as approved by the relevant authorities. Floor areas are approximate measurements and subject to final survey.

Type B2-P (3-Bedroom Penthouse + Study)

Unit #05-07

Area 1,959 sq ft / 182 sq m

(Inclusive of A/C Ledge, Bay Windows (BW), Planter, Open Terrace and Roof Terrace)

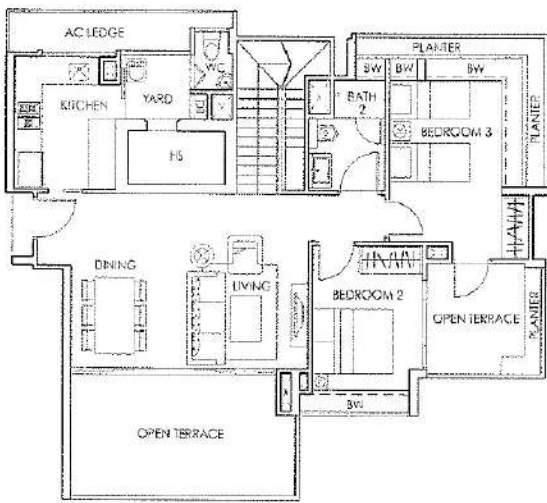


Type B1-P (3-Bedroom Penthouse + Study)

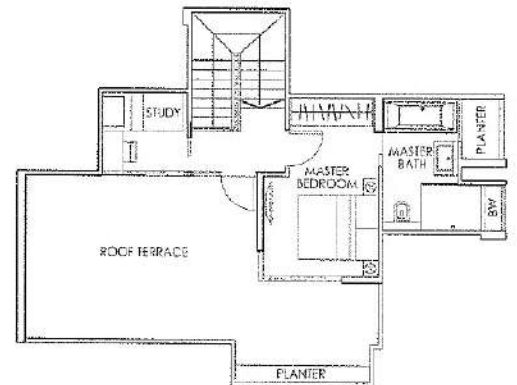
Unit #06-05

Area 1,938 sq ft / 180 sq m

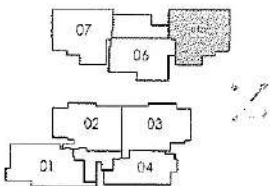
[Inclusive of A/C Ledge, Bay Windows (BW), Planter, Open Terrace and Roof Terrace]



LOWER STOREY



UPPER STOREY



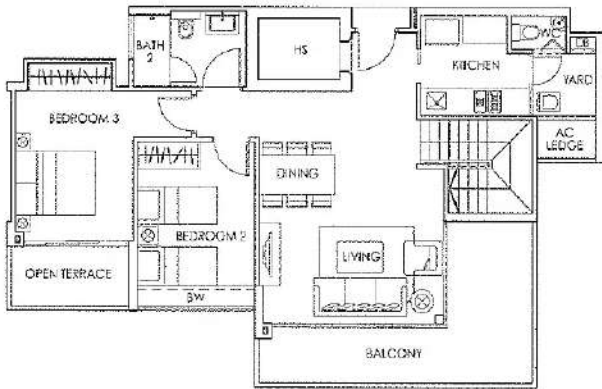
All plans are subject to amendments as approved by the relevant authorities. Floor areas are approximate measurements and subject to final survey.

Type B-P (3-Bedroom Penthouse + Study)

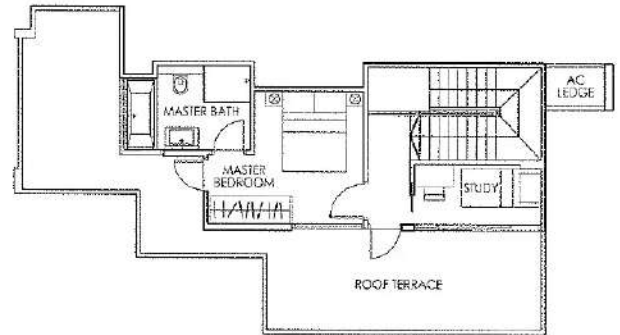
Unit #06-06

Area 1,841 sq ft / 171 sq m

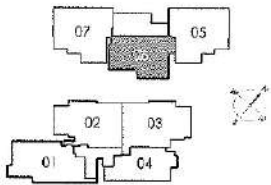
[Inclusive of A/C Ledge, Bay Windows (BW), Balcony, Open Terrace and Roof Terrace]



LOWER STOREY



UPPER STOREY

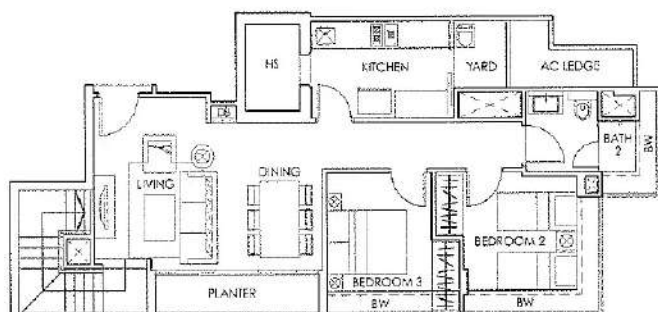


Type A-P (3-Bedroom Penthouse)

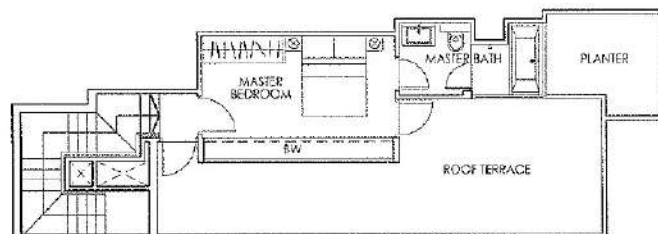
Unit #06-04

Area 1,636 sq ft / 152 sq m

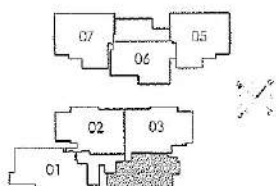
(Inclusive of A/C Ledge, Bay Windows (BW), Planter and Roof Terrace)



LOWER STOREY



UPPER STOREY



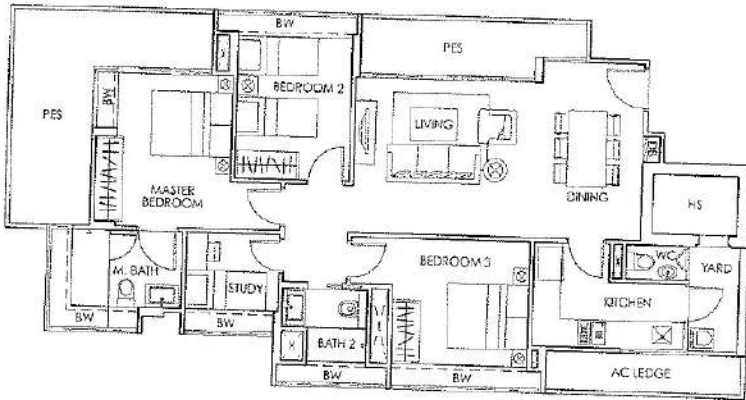
All plans are subject to amendments as approved by the relevant authorities. Floor areas are approximate measurements and subject to final survey.

**Type C2-G (3-Bedroom + Study)**

Unit #01-01

Area 1,421 sq ft / 132 sq m

(Inclusive of A/C Ledge, Bay Windows (BW) and PES)

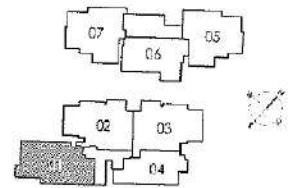
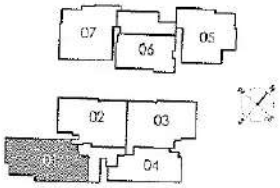
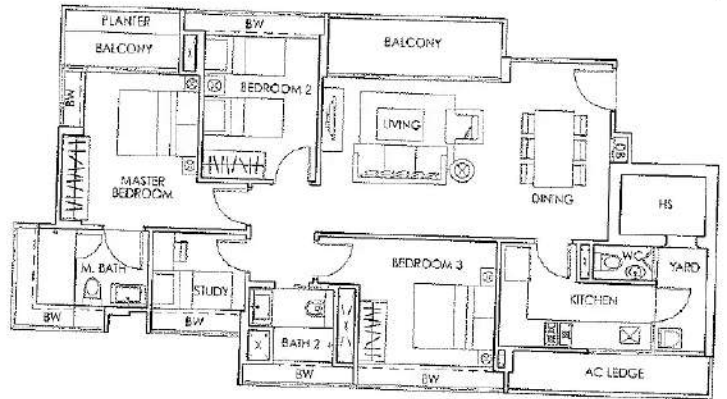


**Type C2 (3-Bedroom + Study)**

Unit #02.01 to #04.01

Area 1,292 sq ft / 120 sq m

(Inclusive of A/C Ledge, Bay Windows (BW), Planter and Balcony)



All plans are subject to amendments as approved by the relevant authorities. Floor areas are approximate measurements and subject to final survey.

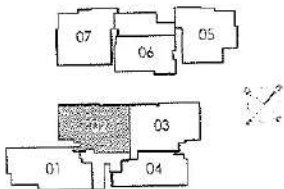
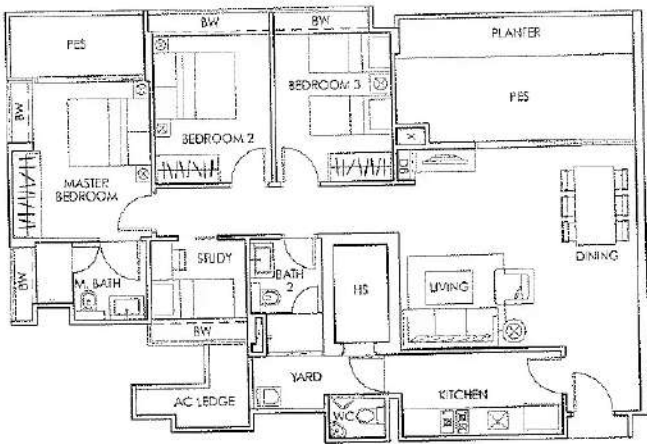


Type C1-G (3-Bedroom + Study)

Unit #02-02

Area 1,410 sq ft / 131 sq m

(Inclusive of A/C Ledge, Bay Windows (BW), Planter and PES)

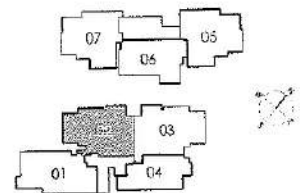
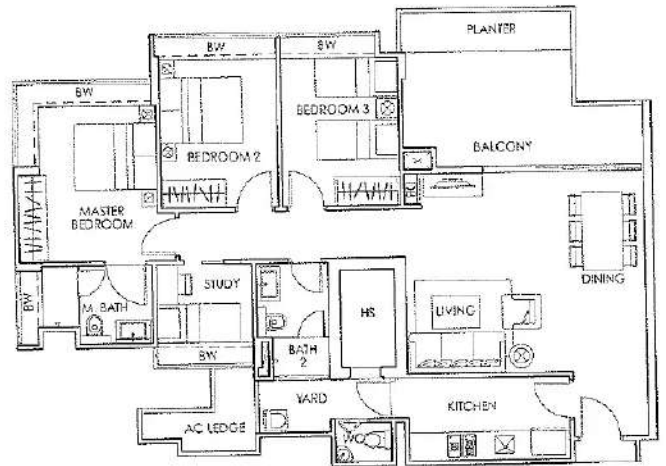


Type C1 (3-Bedroom + Study)

Unit #03-02 to #05-02

Area 1,378 sq ft / 128 sq m

(Inclusive of A/C Ledge, Bay Windows (BW), Planter and Balcony)

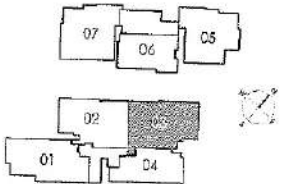
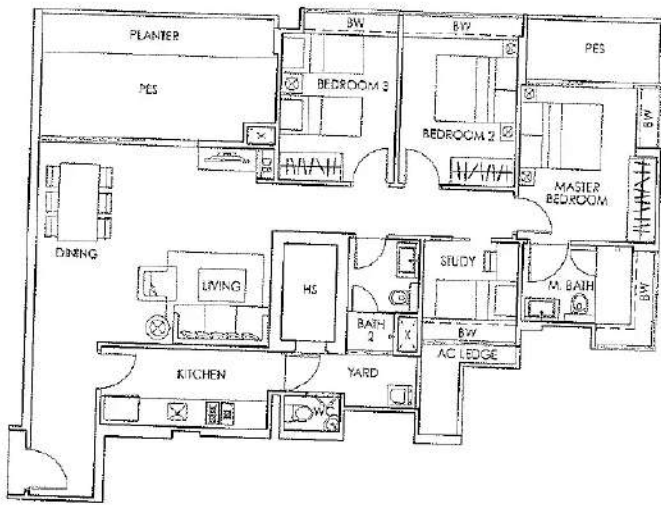


Type C-G (3-Bedroom + Study)

Unit #02-03

Area 1,453 sq ft / 135 sq m

(Inclusive of A/C Ledge, Bay Windows (BW), Planter and PES)

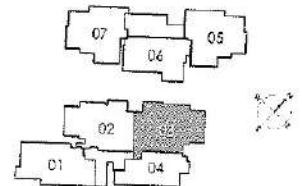


Type C (3-Bedroom + Study)

Unit #03-03 to #05-03

Area 1,421 sq ft / 132 sq m

(Inclusive of A/C Ledge, Bay Windows (BW), Planter and Balcony)

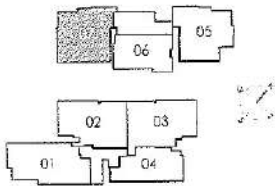
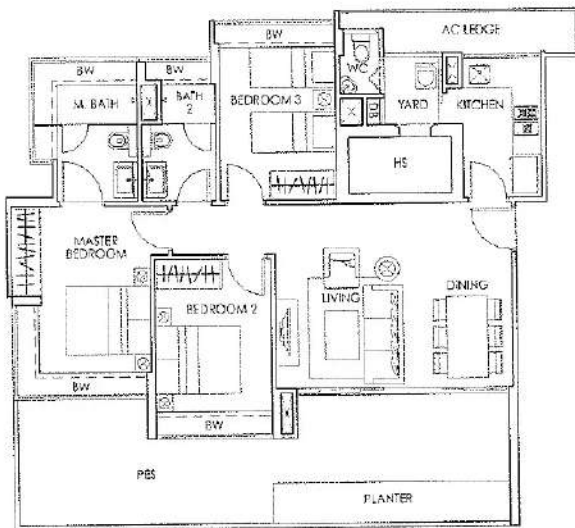


### Type B2-G (3-Bedroom)

Unit #01-07

Area 1,346 sq ft / 125 sq m

(Inclusive of A/C Ledge, Bay Windows (BW), Planter and PES)

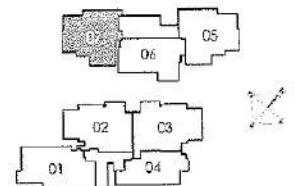
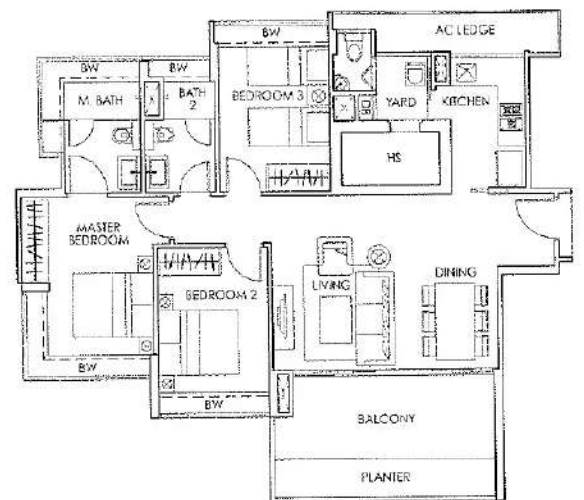


### Type B2 (3-Bedroom)

Unit #02-07 to #04-07

Area 1,227 sq ft / 114 sq m

(Inclusive of A/C Ledge, Bay Windows (BW), Planter and Balcony)

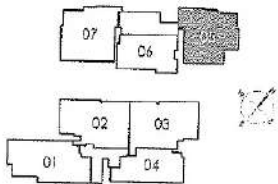
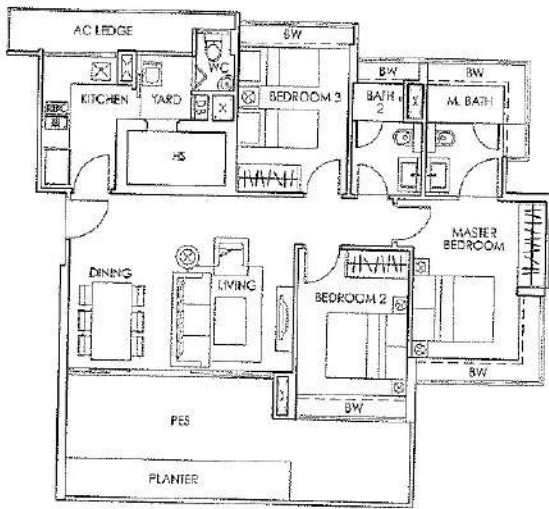


**Type B1-G (3-Bedroom)**

Unit #02-05

Area 1,259 sq ft / 117 sq m

(Inclusive of A/C Ledge, Bay Windows (BW), Planter and PES)

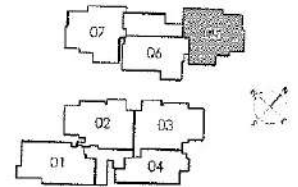
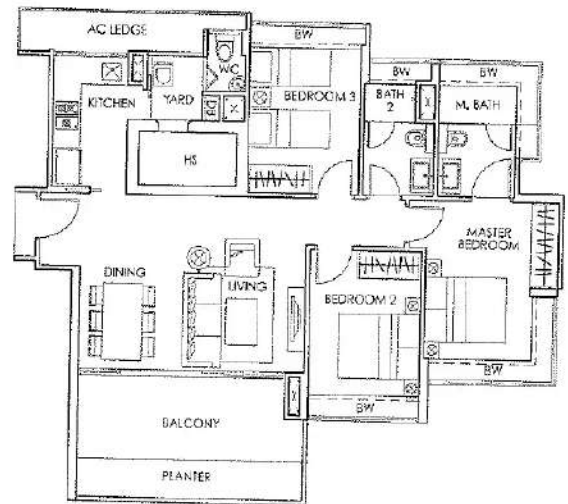


**Type B1 (3-Bedroom)**

Unit #03-05 to #05-05

Area 1,227 sq ft / 114 sq m

(Inclusive of A/C Ledge, Bay Windows (BW), Planter and Balcony)

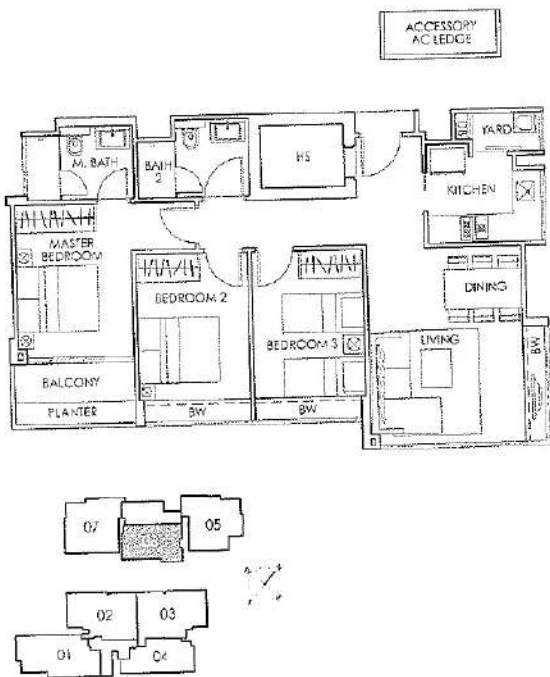


**Type B-G (3-Bedroom)**

Unit #02-06

Area: 990 sq ft / 92 sq m

(Inclusive of accessory lot of A/C Ledge, Bay Windows (BW), Planter and Balcony)

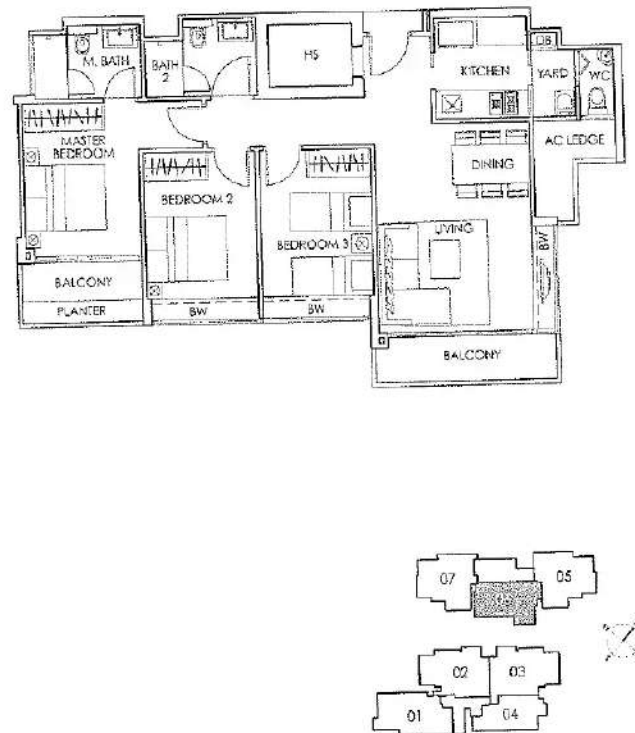


**Type B (3-Bedroom)**

Unit #03-06 to #05-06

Area: 1,076 sq ft / 100 sq m

(Inclusive of A/C Ledge, Bay Windows (BW), Planter and Balcony)

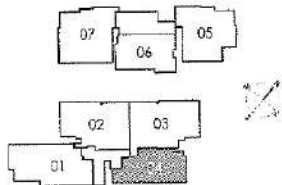
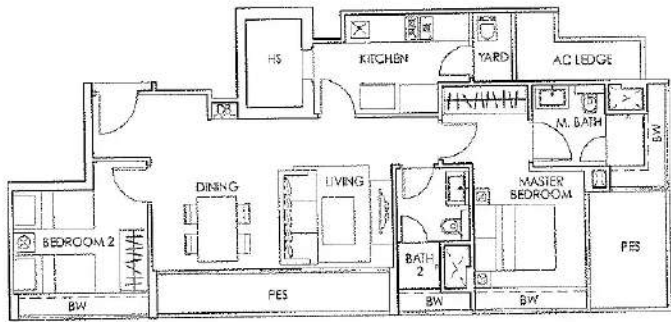


### Type A-G (2-Bedroom)

Unit #02-04

Area 980 sq ft / 91 sq m

(Inclusive of A/C Ledge, Bay Windows (BW) and PES)



### Type A (2-Bedroom)

Unit #03-04 to #05-04

Area 936 sq ft / 87 sq m

(Inclusive of A/C Ledge, Bay Windows (BW) and Planter)

