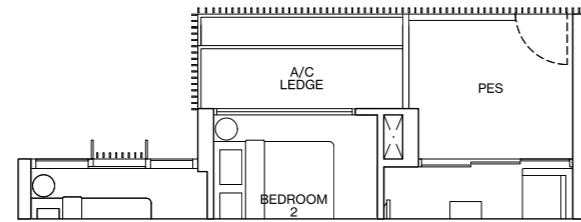


TYPE B 1

[2-BEDROOM]

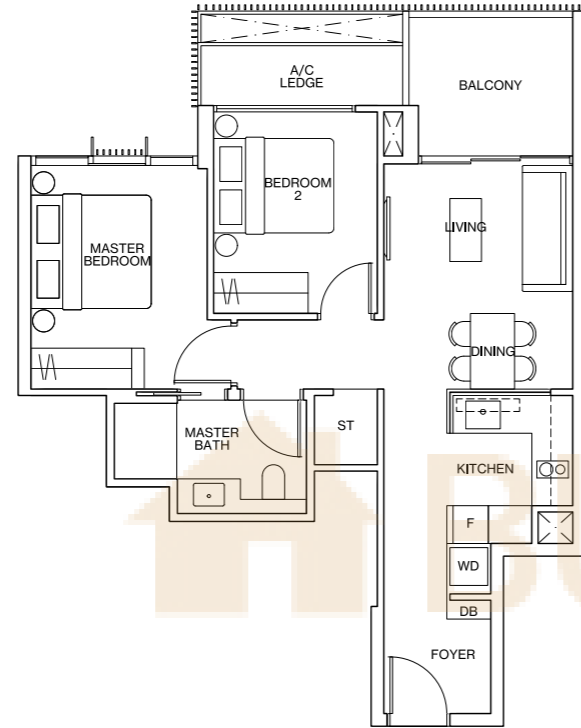
TYPE B1-G 65m² / 700ft²

Inclusive of 6m² PES & 3m² AC Ledge
BLOCK 6 #01-05



TYPE B1 65m² / 700ft²

Inclusive of 6m² Balcony & 3m² AC Ledge
BLOCK 6 #02-05 to #10-05
BLOCK 12 #01-21 to #10-21

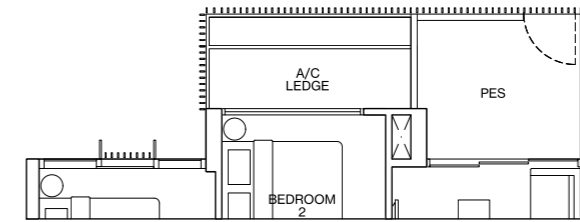


TYPE B 2

[2-BEDROOM + STUDY]

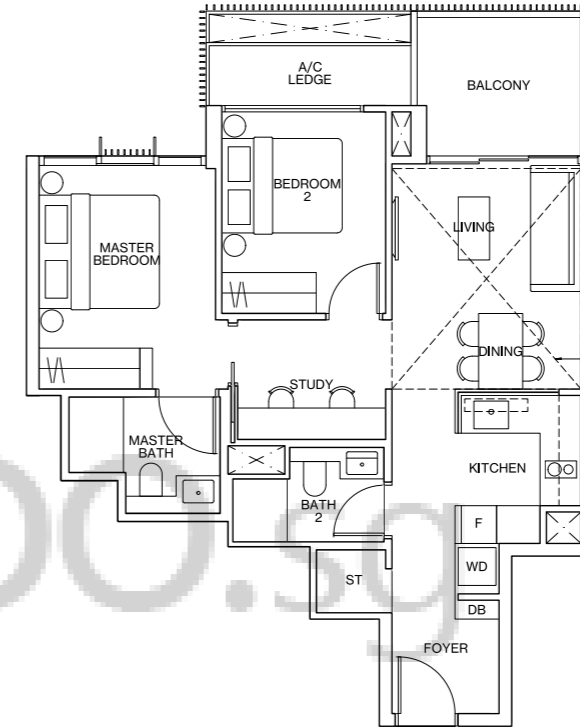
TYPE B2-G 69m² / 743ft²

Inclusive of 7m² PES & 3m² AC Ledge
BLOCK 6 #01-12*
BLOCK 18 #01-37, #01-44*
BLOCK 20 #01-45, #01-52*



TYPE B2 69m² / 743ft²

Inclusive of 7m² Balcony & 3m² AC Ledge
BLOCK 6 #02-12* to #11-12*
BLOCK 12 #01-28* to #11-28*
BLOCK 18 #02-37 to #11-37
BLOCK 18 #02-44* to #11-44*
BLOCK 20 #02-45 to #11-45
BLOCK 20 #02-52* to #11-52*



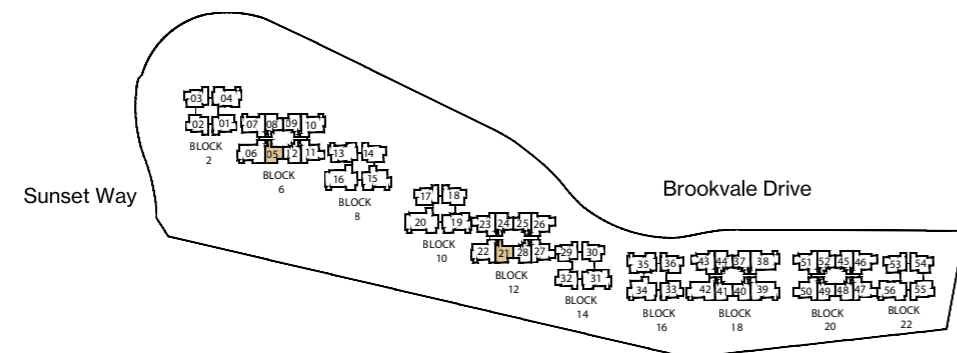
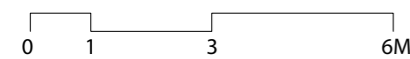
Dotted line denotes strata void complete with bulkhead at units #12-12*, #12-28*, #12-37, #12-44*, #12-45, #12-52*

TYPE B2-P 81m² / 872ft²

Inclusive of 12m² Strata Void, 7m² Balcony & 3m² AC Ledge
BLOCK 6 #12-12*
BLOCK 12 #12-28*
BLOCK 18 #12-37, #12-44*
BLOCK 20 #12-45, #12-52*

LEGEND

- F FRIDGE
- WD WASHER DRYER COMBO
- W WASHER
- D DRYER
- ST STORE
- DB DISTRIBUTION BOARD
- * MIRRORED UNIT
- WN WINE CHILLER
- DW DISHWASHER

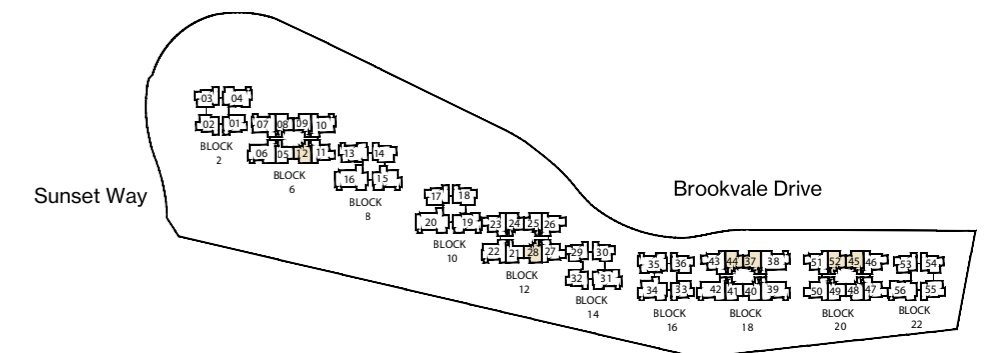
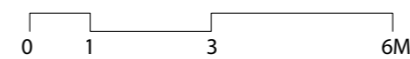


KEY PLAN

ALL PLANS ARE SUBJECT TO CHANGES BY THE RELEVANT AUTHORITIES. MEASUREMENTS ARE APPROXIMATE ONLY AND SUBJECT TO FINAL SURVEY. INFORMATION ACCURATE AT POINT OF PRINTING. BP NO.: A1720-00005-2018-BP01 DATED 11 SEPTEMBER 2020.

LEGEND

- F FRIDGE
- WD WASHER DRYER COMBO
- W WASHER
- D DRYER
- ST STORE
- DB DISTRIBUTION BOARD
- * MIRRORED UNIT
- WN WINE CHILLER
- DW DISHWASHER



KEY PLAN

ALL PLANS ARE SUBJECT TO CHANGES BY THE RELEVANT AUTHORITIES. MEASUREMENTS ARE APPROXIMATE ONLY AND SUBJECT TO FINAL SURVEY. INFORMATION ACCURATE AT POINT OF PRINTING. BP NO.: A1720-00005-2018-BP01 DATED 11 SEPTEMBER 2020.

TYPE B3

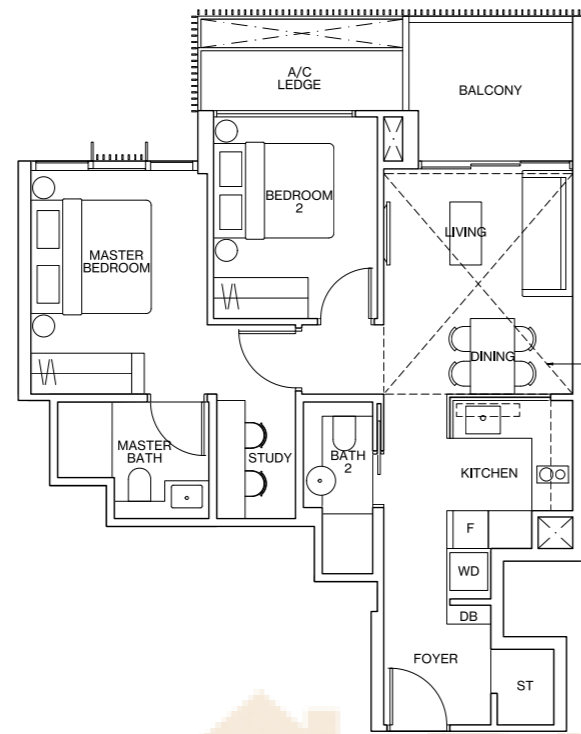
[2-BEDROOM + STUDY]

TYPE B3 70m² / 753ft²

Inclusive of 6m² Balcony & 3m² AC Ledge
 BLOCK 6 #02-08* to #11-08*
 BLOCK 6 #02-09 to #11-09
 BLOCK 12 #02-24* to #11-24*
 BLOCK 12 #02-25 to #11-25
 BLOCK 18 #02-40* to #11-40*
 BLOCK 18 #02-41 to #11-41
 BLOCK 20 #02-48* to #11-48*
 BLOCK 20 #02-49 to #11-49

TYPE B3-P 82m² / 883ft²

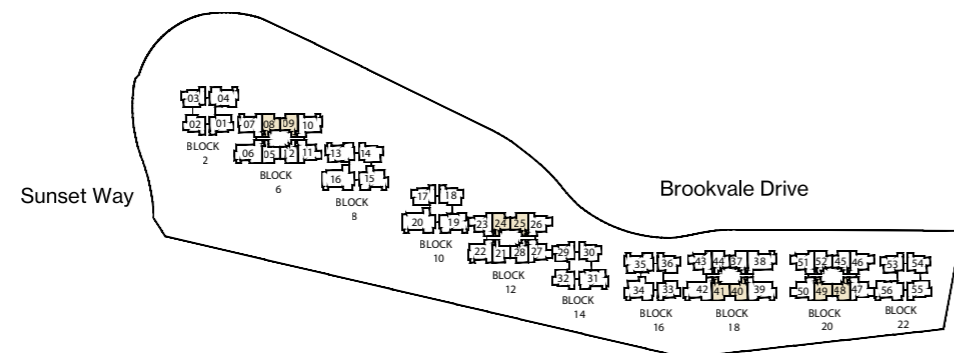
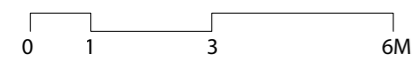
Inclusive of 12m² Strata Void,
 6m² Balcony & 3m² AC Ledge
 BLOCK 6 #12-08*, #12-09
 BLOCK 12 #12-24*, #12-25
 BLOCK 18 #12-40*, #12-41
 BLOCK 20 #12-48*, #12-49



Dotted line denotes strata void complete with bulkhead at units #12-08*, #12-09, #12-24*, #12-25, #12-40*, #12-41, #12-48*, #12-49

LEGEND

- F FRIDGE
- WD WASHER DRYER COMBO
- W WASHER
- D DRYER
- ST STORE
- DB DISTRIBUTION BOARD
- * MIRRORED UNIT
- WN WINE CHILLER
- DW DISHWASHER



KEY PLAN

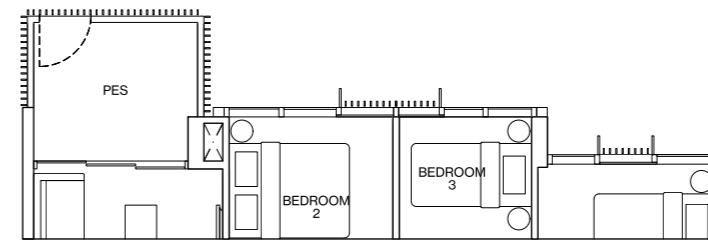
ALL PLANS ARE SUBJECT TO CHANGES BY THE RELEVANT AUTHORITIES.
 MEASUREMENTS ARE APPROXIMATE ONLY AND SUBJECT TO FINAL SURVEY.
 INFORMATION ACCURATE AT POINT OF PRINTING.
 BP NO.: A1720-00005-2018-BP01 DATED 11 SEPTEMBER 2020.

TYPE C1

[3-BEDROOM]

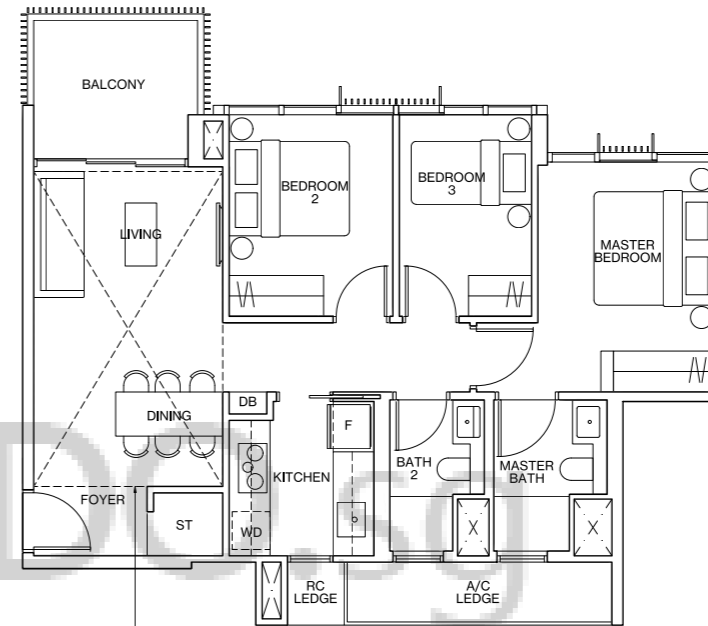
TYPE C1-G 80m² / 861ft²

Inclusive of 7m² PES & 5m² AC Ledge
 BLOCK 2 #01-02
 BLOCK 14 #01-29*, #01-30
 BLOCK 16 #01-33*, #01-36
 BLOCK 22 #01-53*, #01-54



TYPE C1 80m² / 861ft²

Inclusive of 7m² Balcony & 5m² AC Ledge
 BLOCK 2 #02-02 to #11-02
 BLOCK 14 #02-29* to #11-29*
 BLOCK 14 #02-30 to #11-30
 BLOCK 14 #01-32 to #11-32
 BLOCK 16 #02-33* to #11-33*
 BLOCK 16 #02-36 to #11-36
 BLOCK 22 #02-53* to #11-53*
 BLOCK 22 #02-54 to #11-54



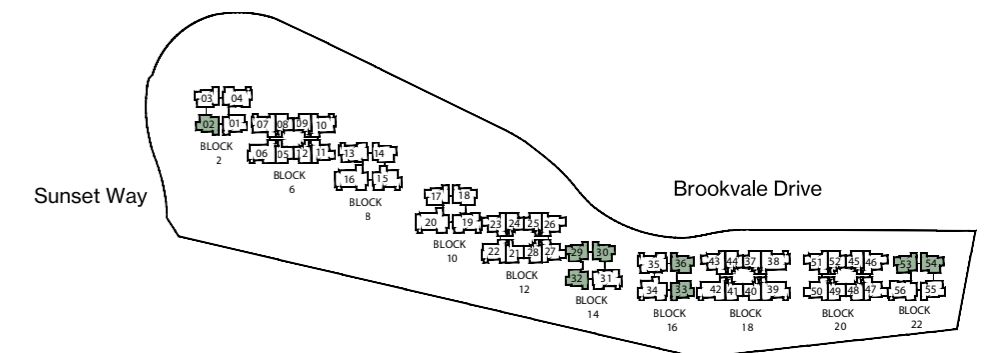
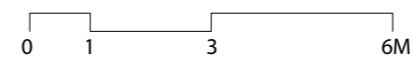
Dotted line denotes strata void complete with bulkhead at units #12-02, #12-29*, #12-30, #12-32, #12-33*, #12-36, #12-53*, #12-54

TYPE C1-P 96m² / 1033ft²

Inclusive of 16m² Strata Void,
 7m² Balcony & 5m² AC Ledge
 BLOCK 2 #12-02
 BLOCK 14 #12-29*, #12-30, #12-32
 BLOCK 16 #12-33*, #12-36
 BLOCK 22 #12-53*, #12-54

LEGEND

- F FRIDGE
- WD WASHER DRYER COMBO
- W WASHER
- D DRYER
- ST STORE
- DB DISTRIBUTION BOARD
- * MIRRORED UNIT
- WN WINE CHILLER
- DW DISHWASHER



KEY PLAN

ALL PLANS ARE SUBJECT TO CHANGES BY THE RELEVANT AUTHORITIES.
 MEASUREMENTS ARE APPROXIMATE ONLY AND SUBJECT TO FINAL SURVEY.
 INFORMATION ACCURATE AT POINT OF PRINTING.
 BP NO.: A1720-00005-2018-BP01 DATED 11 SEPTEMBER 2020.

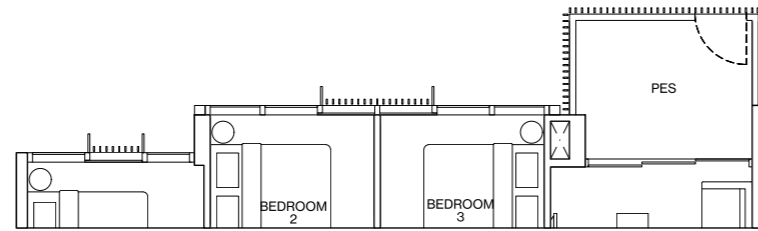
TYPE C2

[3-BEDROOM DELUXE]

TYPE C2-G

87m² / 936ft²

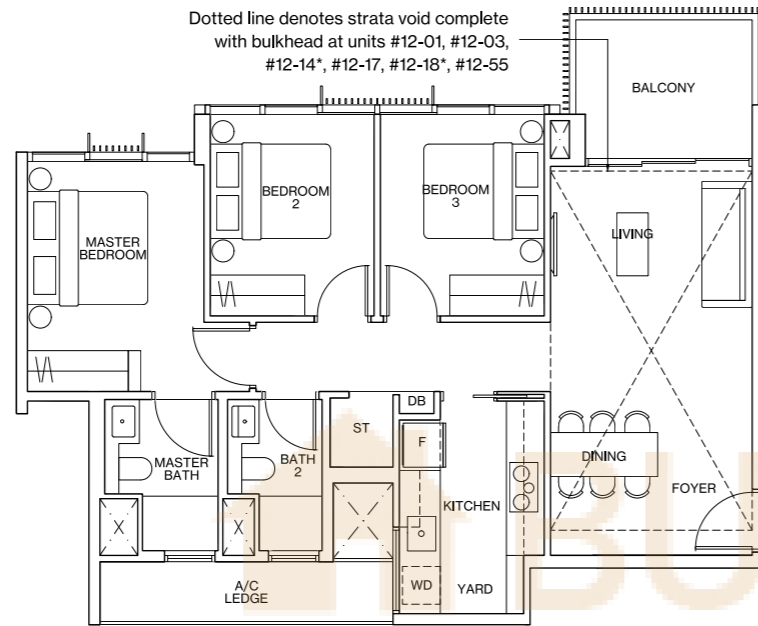
Inclusive of 7m² PES & 5m² AC Ledge
 BLOCK 2 #01-01, #01-03
 BLOCK 8 #01-14*
 BLOCK 10 #01-17, #01-18*
 BLOCK 22 #01-55



TYPE C2

87m² / 936ft²

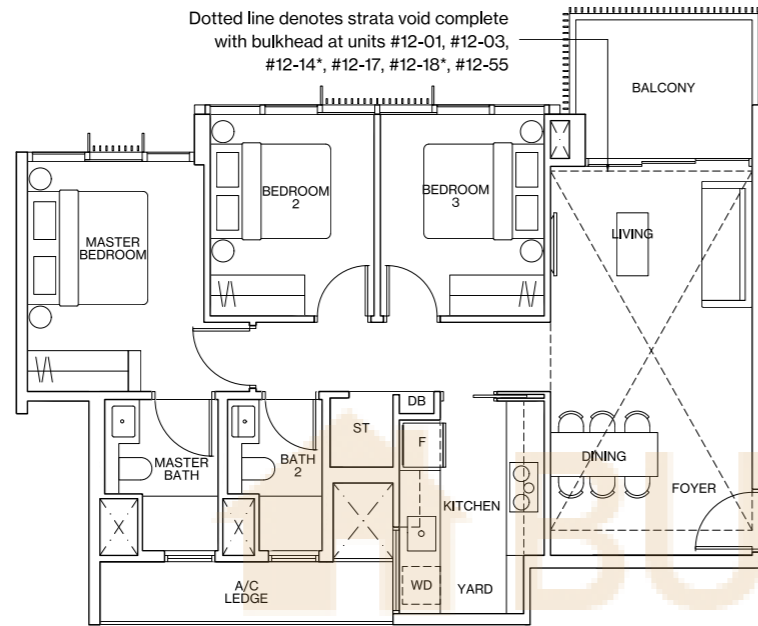
Inclusive of 7m² Balcony & 5m² AC Ledge
 BLOCK 2 #02-01 to #11-01
 BLOCK 2 #02-03 to #11-03
 BLOCK 8 #02-14* to #11-14*
 BLOCK 10 #02-17 to #11-17
 BLOCK 10 #02-18* to #11-18*
 BLOCK 22 #02-55 to #11-55



TYPE C2-P

107m² / 1152ft²

Inclusive of 20m² Strata Void, 7m² Balcony & 5m² AC Ledge
 BLOCK 2 #12-01, #12-03
 BLOCK 8 #12-14*
 BLOCK 10 #12-17, #12-18*
 BLOCK 22 #12-55



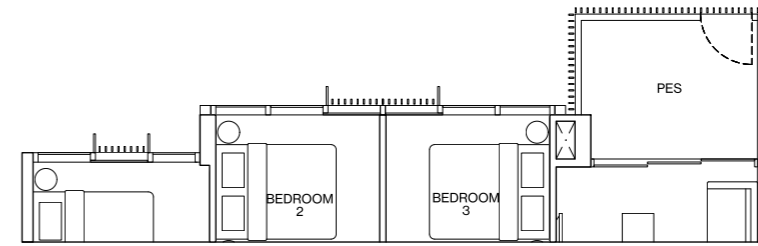
TYPE C3

[3-BEDROOM DELUXE]

TYPE C3-G

91m² / 980ft²

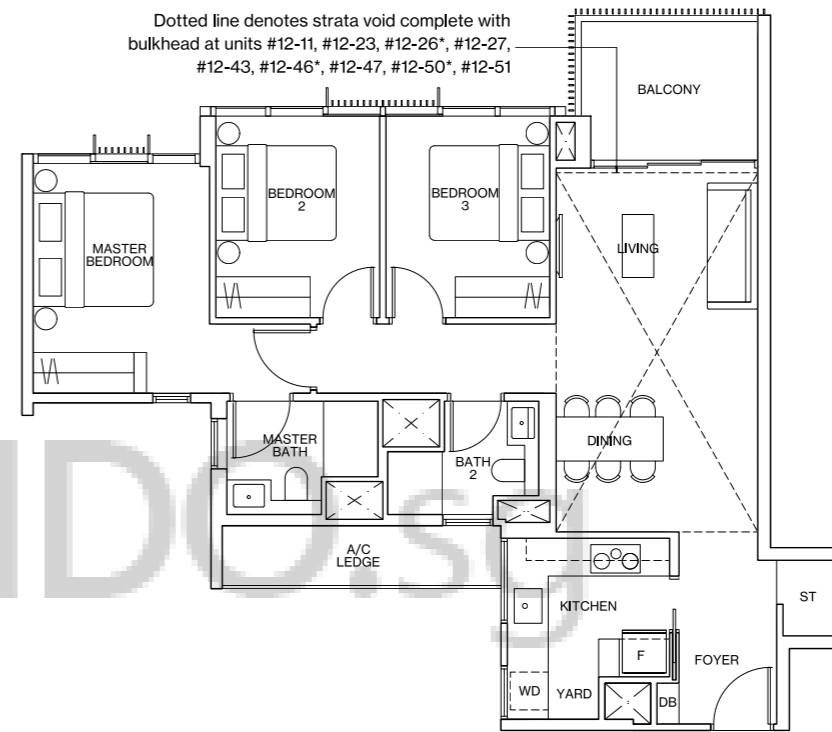
Inclusive of 7m² PES & 5m² AC Ledge
 BLOCK 6 #01-11
 BLOCK 12 #01-23, #01-26*
 BLOCK 18 #01-43
 BLOCK 20 #01-46*, #01-47, #01-50*, #01-51



TYPE C3

91m² / 980ft²

Inclusive of 7m² Balcony & 5m² AC Ledge
 BLOCK 6 #02-11 to #11-11
 BLOCK 12 #02-23 to #11-23
 BLOCK 12 #02-26* to #11-26*
 BLOCK 12 #01-27 to #11-27
 BLOCK 18 #02-43 to #11-43
 BLOCK 20 #02-46* to #11-46*
 BLOCK 20 #02-47 to #11-47
 BLOCK 20 #02-50* to #11-50*
 BLOCK 20 #02-51 to #11-51



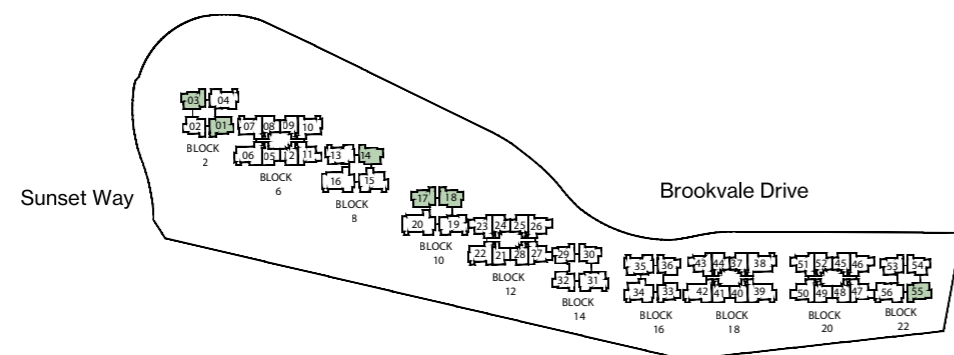
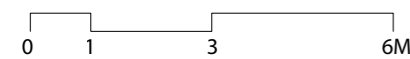
TYPE C3-P

111m² / 1195ft²

Inclusive of 20m² Strata Void, 7m² Balcony & 5m² AC Ledge
 BLOCK 6 #12-11
 BLOCK 12 #12-23, #12-26*, #12-27
 BLOCK 18 #12-43
 BLOCK 20 #12-46*, #12-47, #12-50*, #12-51

LEGEND

- F FRIDGE
- WD WASHER DRYER COMBO
- W WASHER
- D DRYER
- ST STORE
- DB DISTRIBUTION BOARD
- * MIRRORED UNIT
- WN WINE CHILLER
- DW DISHWASHER

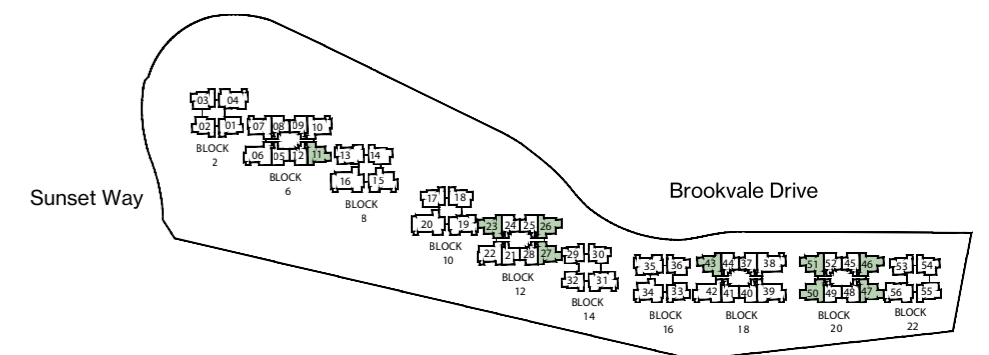
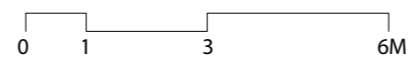


KEY PLAN

ALL PLANS ARE SUBJECT TO CHANGES BY THE RELEVANT AUTHORITIES.
 MEASUREMENTS ARE APPROXIMATE ONLY AND SUBJECT TO FINAL SURVEY.
 INFORMATION ACCURATE AT POINT OF PRINTING.
 BP NO.: A1720-00005-2018-BP01 DATED 11 SEPTEMBER 2020.

LEGEND

- F FRIDGE
- WD WASHER DRYER COMBO
- W WASHER
- D DRYER
- ST STORE
- DB DISTRIBUTION BOARD
- * MIRRORED UNIT
- WN WINE CHILLER
- DW DISHWASHER



KEY PLAN

ALL PLANS ARE SUBJECT TO CHANGES BY THE RELEVANT AUTHORITIES.
 MEASUREMENTS ARE APPROXIMATE ONLY AND SUBJECT TO FINAL SURVEY.
 INFORMATION ACCURATE AT POINT OF PRINTING.
 BP NO.: A1720-00005-2018-BP01 DATED 11 SEPTEMBER 2020.

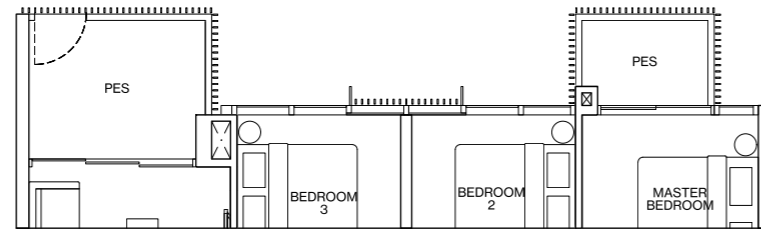
TYPE C4

[3-BEDROOM PREMIUM]

TYPE C4-G

103m² / 1109ft²

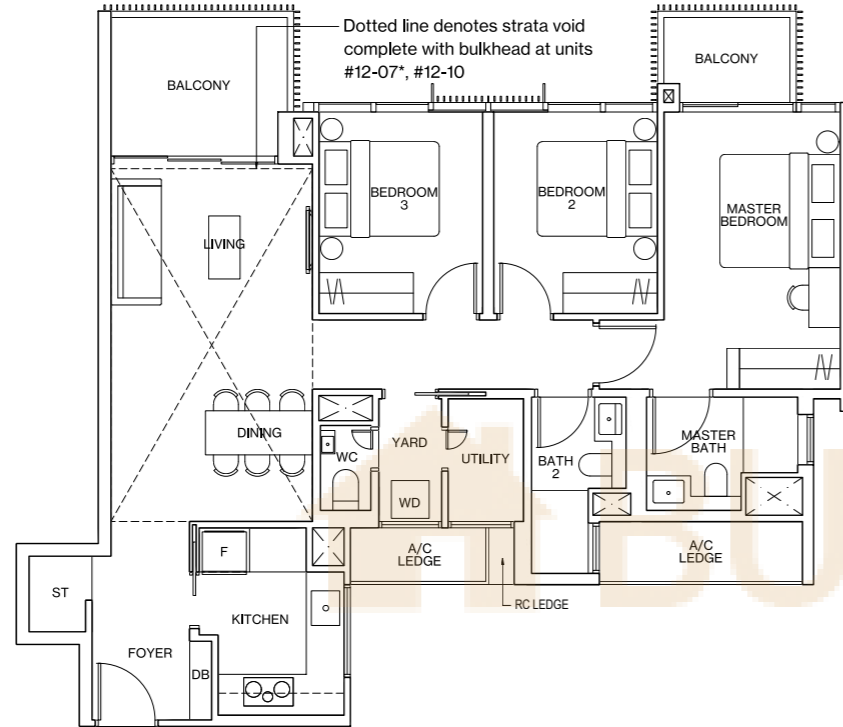
Inclusive of 10m² PES & 6m² AC Ledge
BLOCK 6 #01-07*, #01-10



TYPE C4

103m² / 1109ft²

Inclusive of 10m² Balcony & 6m² AC Ledge
BLOCK 6 #02-07* to #11-07*
BLOCK 6 #02-10 to #11-10
BLOCK 12 #01-22 to #10-22



TYPE C4-P

122m² / 1313ft²

Inclusive of 19m² Strata Void,
10m² Balcony & 6m² AC Ledge
BLOCK 6 #12-07*, #12-10

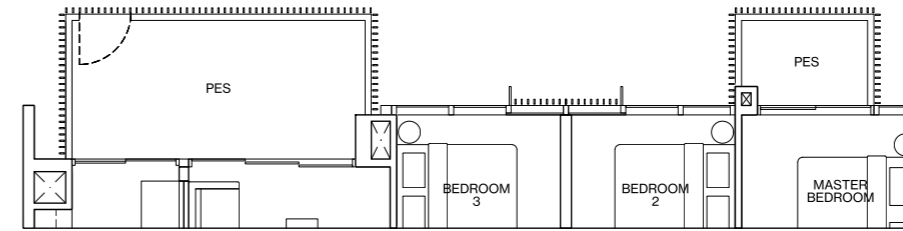
TYPE C5

[3-BEDROOM PREMIUM]

TYPE C5-G

109m² / 1173ft²

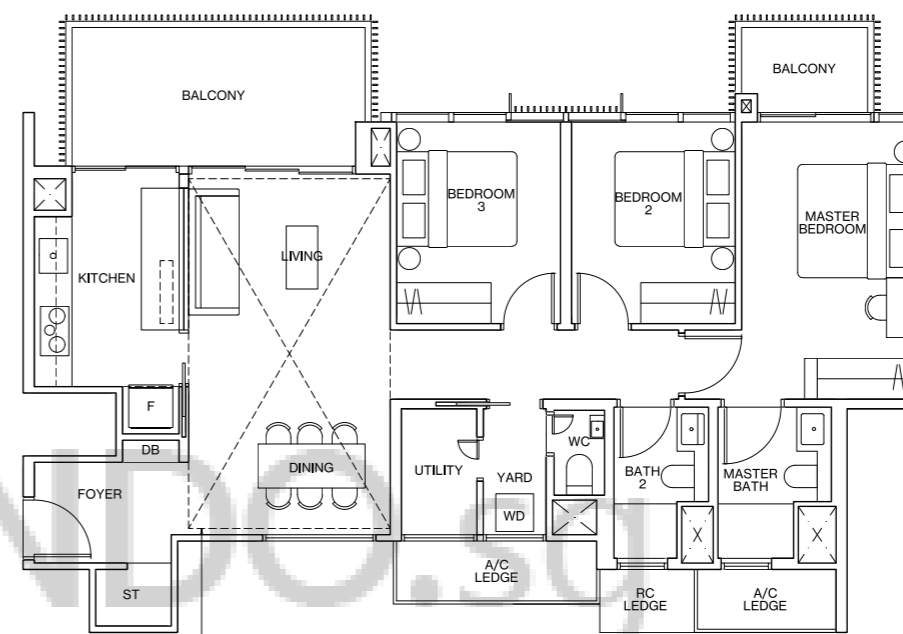
Inclusive of 14m² PES & 6m² AC Ledge
BLOCK 2 #01-04
BLOCK 8 #01-13*
BLOCK 16 #01-35*
BLOCK 22 #01-56



TYPE C5

109m² / 1173ft²

Inclusive of 14m² Balcony & 6m² AC Ledge
BLOCK 2 #02-04 to #11-04
BLOCK 8 #02-13* to #11-13*
BLOCK 10 #01-19* to #11-19*
BLOCK 14 #01-31* to #11-31*
BLOCK 16 #02-35* to #11-35*
BLOCK 22 #02-56 to #11-56



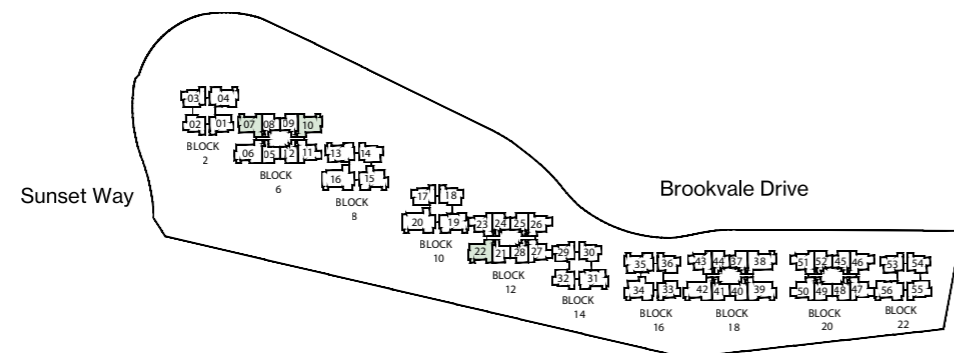
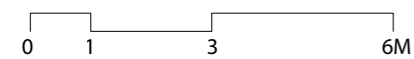
TYPE C5-P

128m² / 1378ft²

Inclusive of 19m² Strata Void,
14m² Balcony & 6m² AC Ledge
BLOCK 2 #12-04
BLOCK 8 #12-13*
BLOCK 10 #12-19*
BLOCK 14 #12-31*
BLOCK 16 #12-35*
BLOCK 22 #12-56

LEGEND

- F FRIDGE
- WD WASHER DRYER COMBO
- W WASHER
- D DRYER
- ST STORE
- DB DISTRIBUTION BOARD
- * MIRRORED UNIT
- WN WINE CHILLER
- DW DISHWASHER

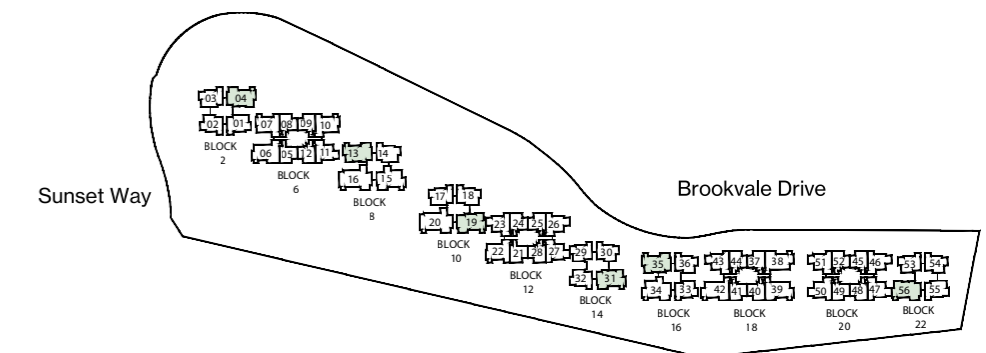
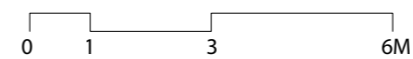


KEY PLAN

ALL PLANS ARE SUBJECT TO CHANGES BY THE RELEVANT AUTHORITIES.
MEASUREMENTS ARE APPROXIMATE ONLY AND SUBJECT TO FINAL SURVEY.
INFORMATION ACCURATE AT POINT OF PRINTING.
BP NO: A1720-00005-2018-BP01 DATED 11 SEPTEMBER 2020.

LEGEND

- F FRIDGE
- WD WASHER DRYER COMBO
- W WASHER
- D DRYER
- ST STORE
- DB DISTRIBUTION BOARD
- * MIRRORED UNIT
- WN WINE CHILLER
- DW DISHWASHER



KEY PLAN

ALL PLANS ARE SUBJECT TO CHANGES BY THE RELEVANT AUTHORITIES.
MEASUREMENTS ARE APPROXIMATE ONLY AND SUBJECT TO FINAL SURVEY.
INFORMATION ACCURATE AT POINT OF PRINTING.
BP NO: A1720-00005-2018-BP01 DATED 11 SEPTEMBER 2020.

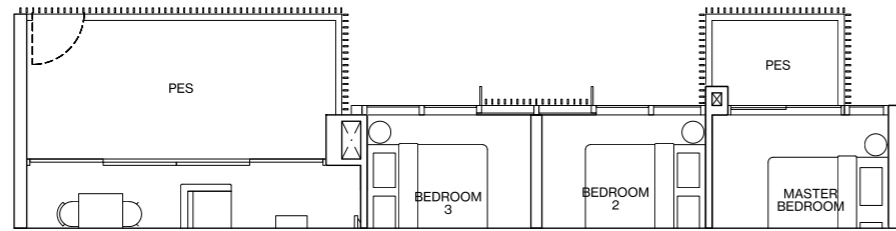
TYPE C6

[3-BEDROOM PREMIUM]

TYPE C6-G

111m² / 1195ft²

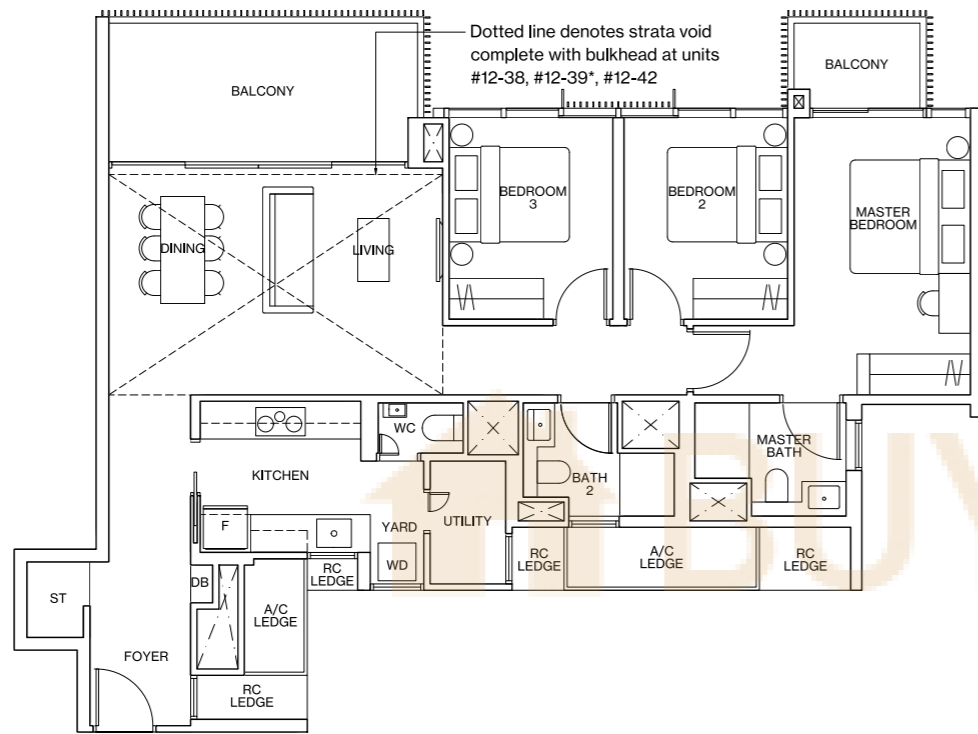
Inclusive of 15m² PES & 5m² AC Ledge
BLOCK 18 #01-38, #01-39*, #01-42



TYPE C6

111m² / 1195ft²

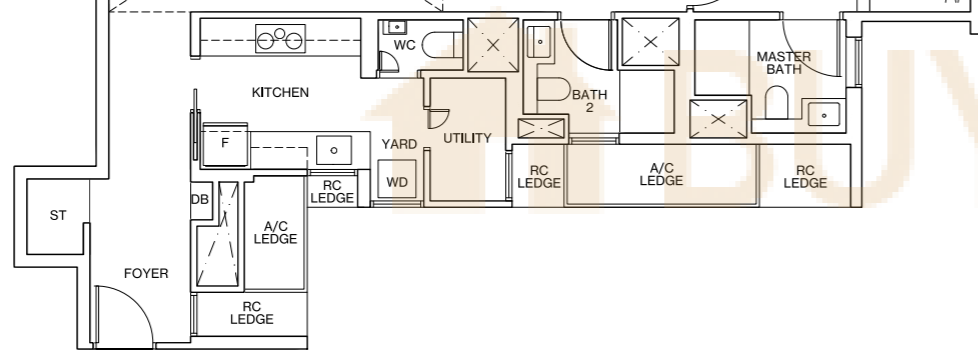
Inclusive of 15m² Balcony & 5m² AC Ledge
BLOCK 18 #02-38 to #11-38
BLOCK 18 #02-39* to #11-39*
BLOCK 18 #02-42 to #11-42



TYPE C6-P

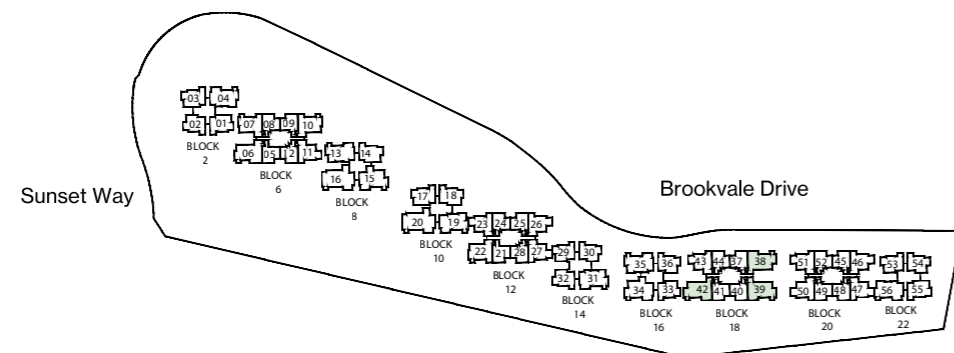
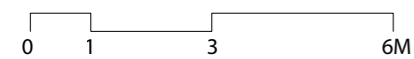
131m² / 1410ft²

Inclusive of 20m² Strata Void, 15m² Balcony & 5m² AC Ledge
BLOCK 18 #12-38, #12-39*, #12-42



LEGEND

- F FRIDGE
- WD WASHER DRYER COMBO
- W WASHER
- D DRYER
- ST STORE
- DB DISTRIBUTION BOARD
- * MIRRORED UNIT
- WN WINE CHILLER
- DW DISHWASHER



KEY PLAN

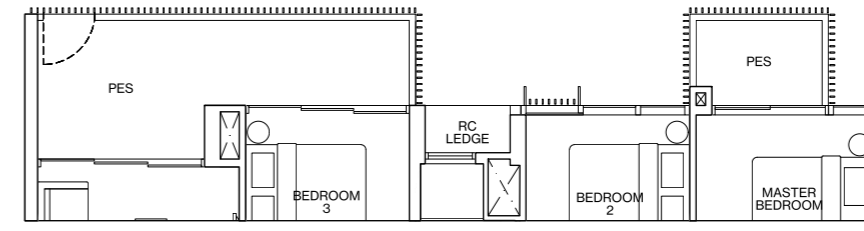
TYPE D1

[4-BEDROOM DELUXE]

TYPE D1-G

116m² / 1249ft²

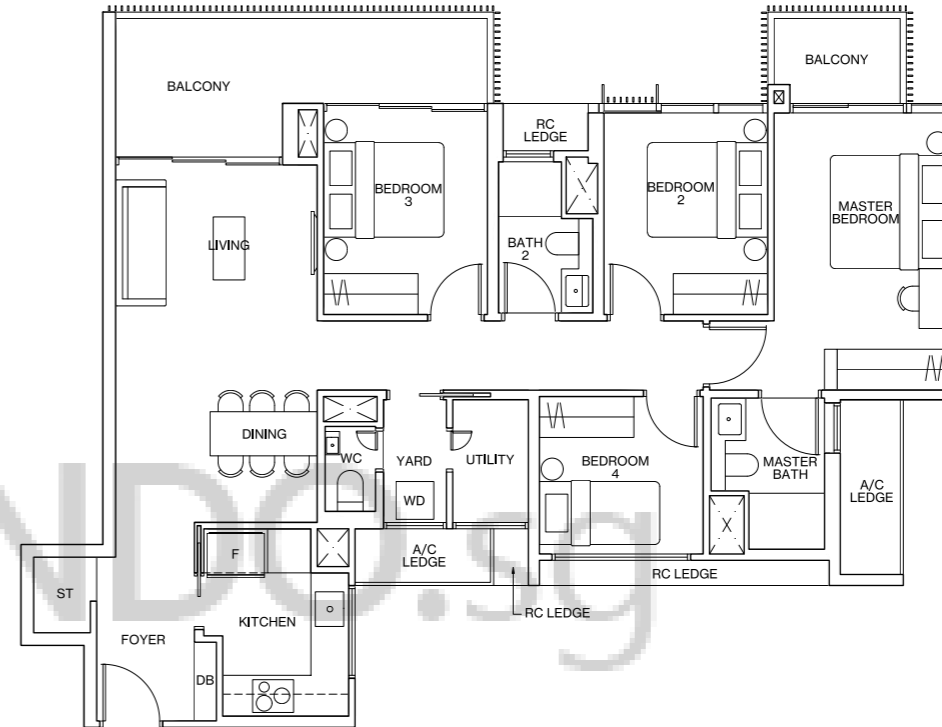
Inclusive of 15m² PES & 5m² AC Ledge
BLOCK 6 #01-06



TYPE D1

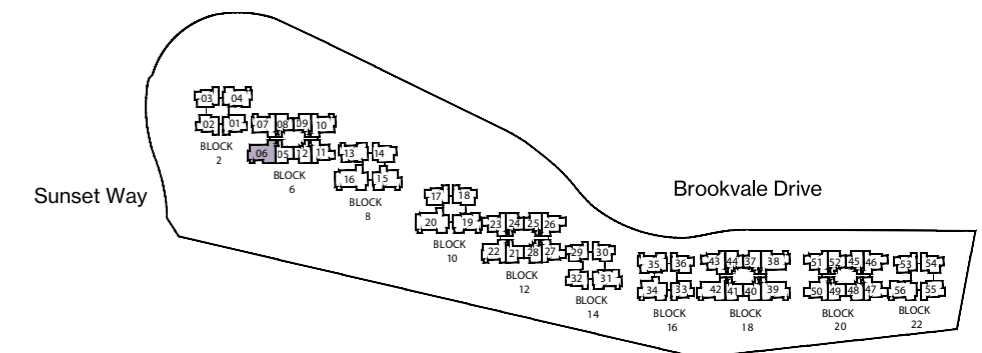
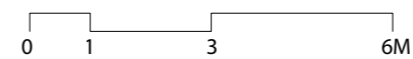
116m² / 1249ft²

Inclusive of 15m² Balcony & 5m² AC Ledge
BLOCK 6 #02-06 to #10-06



LEGEND

- F FRIDGE
- WD WASHER DRYER COMBO
- W WASHER
- D DRYER
- ST STORE
- DB DISTRIBUTION BOARD
- * MIRRORED UNIT
- WN WINE CHILLER
- DW DISHWASHER



KEY PLAN

ALL PLANS ARE SUBJECT TO CHANGES BY THE RELEVANT AUTHORITIES.
MEASUREMENTS ARE APPROXIMATE ONLY AND SUBJECT TO FINAL SURVEY.
INFORMATION ACCURATE AT POINT OF PRINTING.
BP NO: A1720-00005-2018-BP01 DATED 11 SEPTEMBER 2020.

ALL PLANS ARE SUBJECT TO CHANGES BY THE RELEVANT AUTHORITIES.
MEASUREMENTS ARE APPROXIMATE ONLY AND SUBJECT TO FINAL SURVEY.
INFORMATION ACCURATE AT POINT OF PRINTING.
BP NO: A1720-00005-2018-BP01 DATED 11 SEPTEMBER 2020.

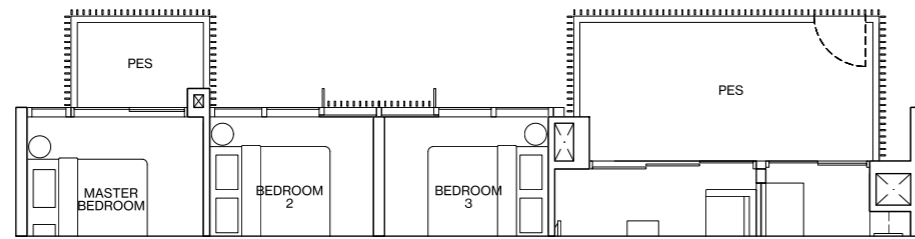
TYPE D 2

[4-BEDROOM DELUXE]

TYPE D2-G

117m² / 1259ft²

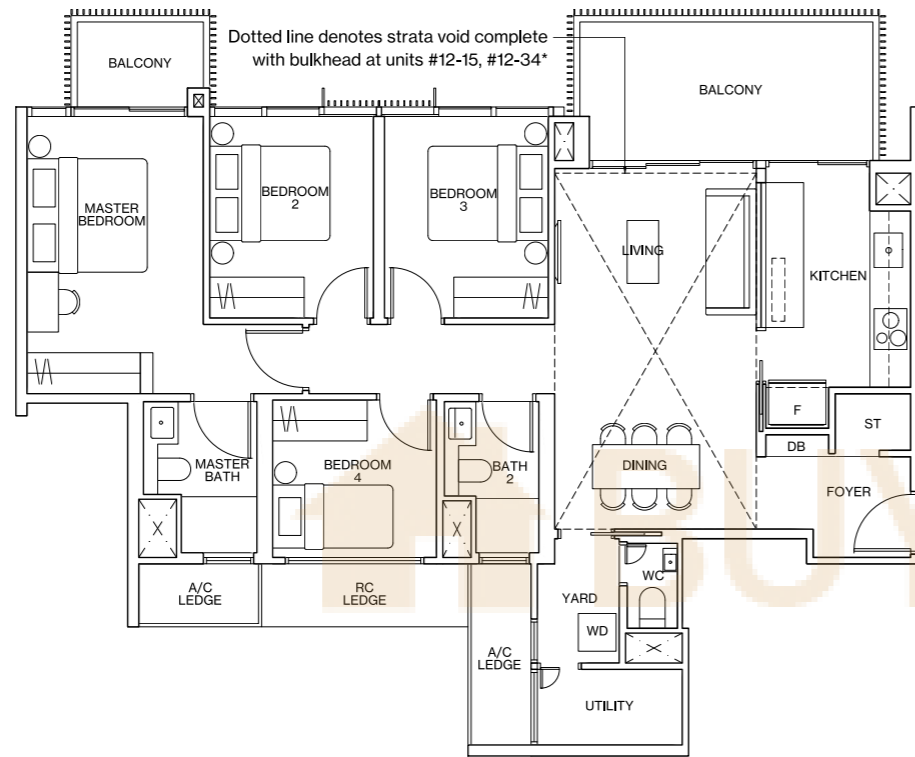
Inclusive of 14m² PES & 5m² AC Ledge
BLOCK 8 #01-15
BLOCK 16 #01-34*



TYPE D2

117m² / 1259ft²

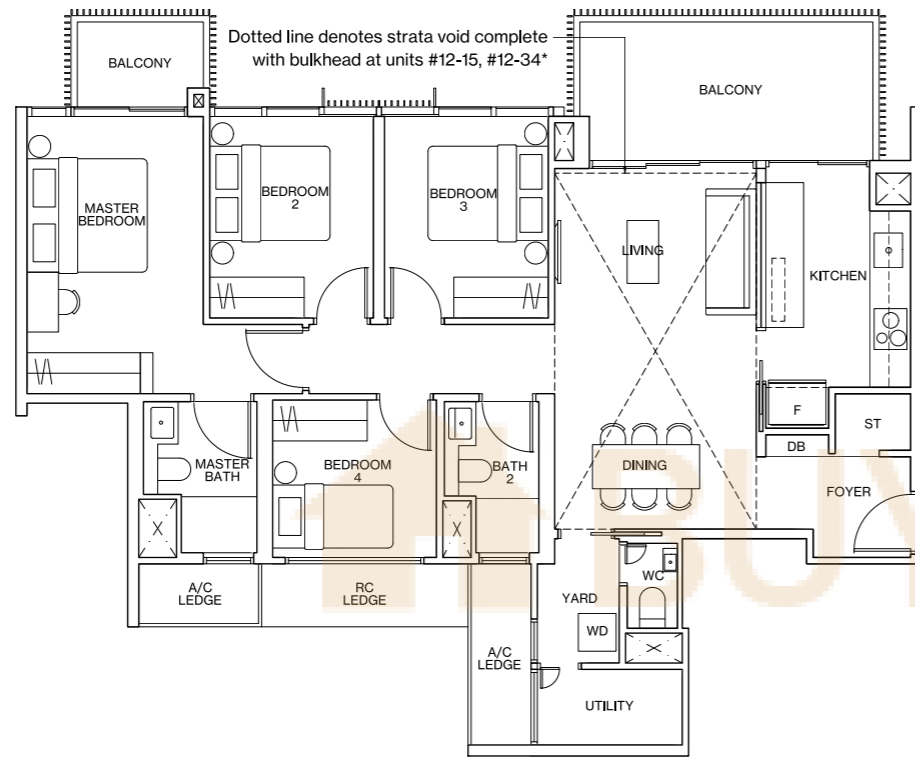
Inclusive of 14m² Balcony & 5m² AC Ledge
BLOCK 8 #02-15 to #11-15
BLOCK 16 #02-34* to #11-34*



TYPE D2-P

136m² / 1464ft²

Inclusive of 19m² Strata Void,
14m² Balcony & 5m² AC Ledge
BLOCK 8 #12-15
BLOCK 16 #12-34*



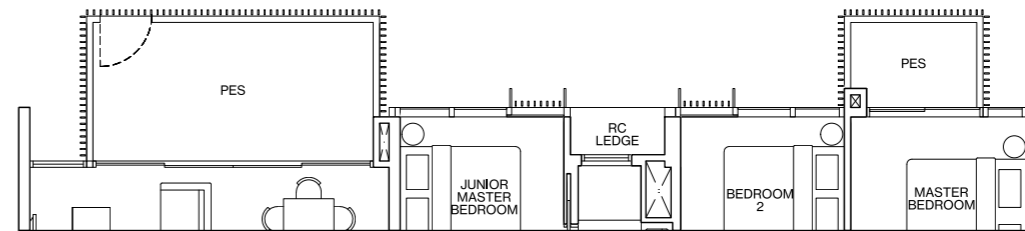
TYPE D 3

[4-BEDROOM PREMIUM]

TYPE D3-G

137m² / 1475ft²

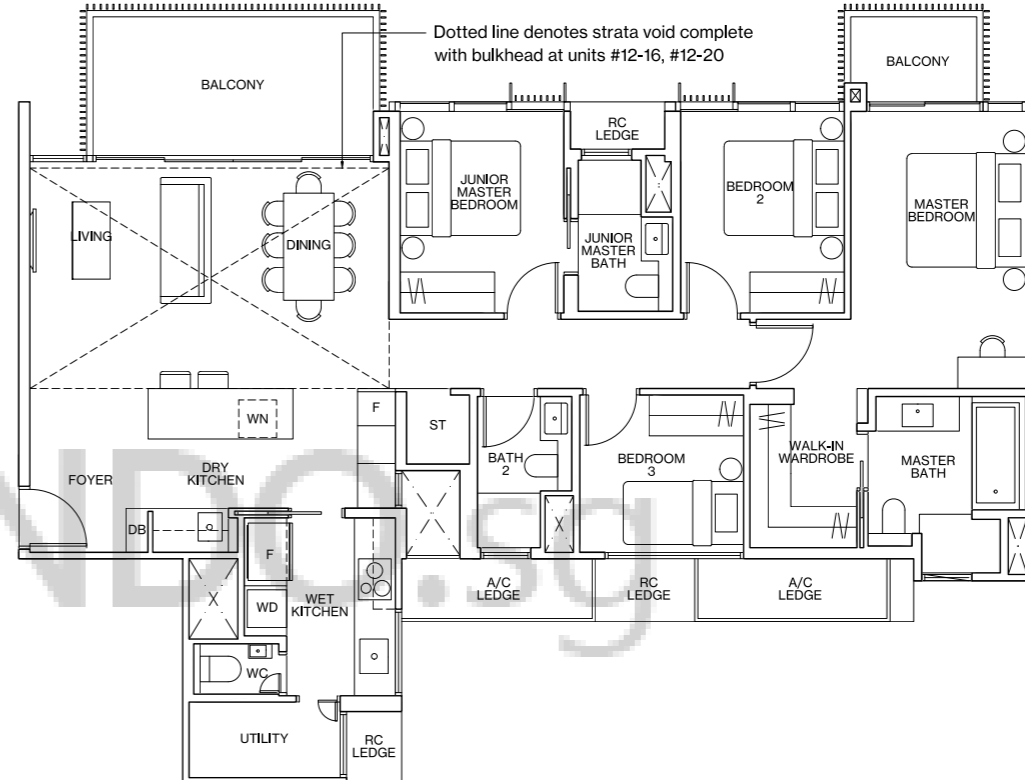
Inclusive of 14m² PES & 6m² AC Ledge
BLOCK 8 #01-16



TYPE D3

137m² / 1475ft²

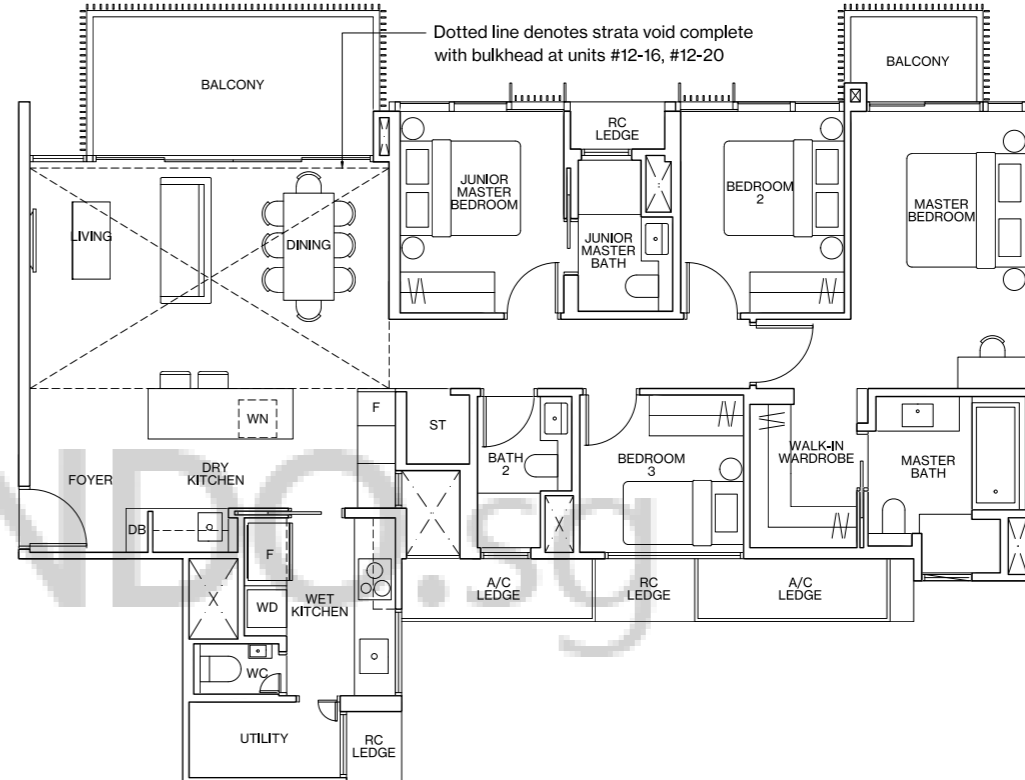
Inclusive of 14m² Balcony & 6m² AC Ledge
BLOCK 8 #02-16 to #11-16
BLOCK 10 #01-20 to #11-20



TYPE D3-P

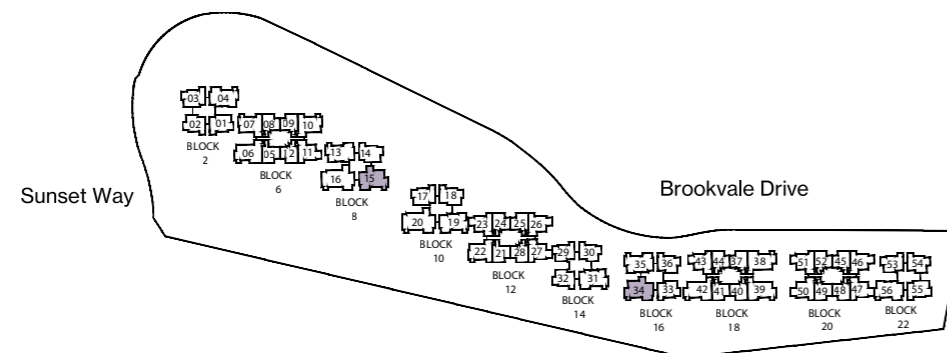
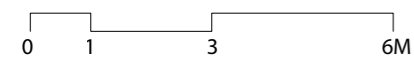
159m² / 1711ft²

Inclusive of 22m² Strata Void,
14m² Balcony & 6m² AC Ledge
BLOCK 8 #12-16
BLOCK 10 #12-20



LEGEND

- F FRIDGE
- WD WASHER DRYER COMBO
- W WASHER
- D DRYER
- ST STORE
- DB DISTRIBUTION BOARD
- * MIRRORED UNIT
- WN WINE CHILLER
- DW DISHWASHER

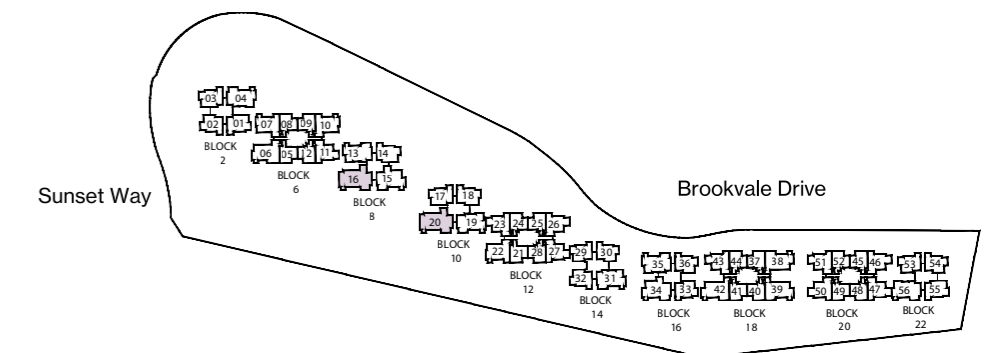
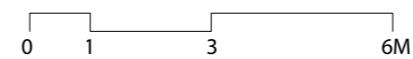


KEY PLAN

ALL PLANS ARE SUBJECT TO CHANGES BY THE RELEVANT AUTHORITIES.
MEASUREMENTS ARE APPROXIMATE ONLY AND SUBJECT TO FINAL SURVEY.
INFORMATION ACCURATE AT POINT OF PRINTING.
BP NO: A1720-00005-2018-BP01 DATED 11 SEPTEMBER 2020.

LEGEND

- F FRIDGE
- WD WASHER DRYER COMBO
- W WASHER
- D DRYER
- ST STORE
- DB DISTRIBUTION BOARD
- * MIRRORED UNIT
- WN WINE CHILLER
- DW DISHWASHER

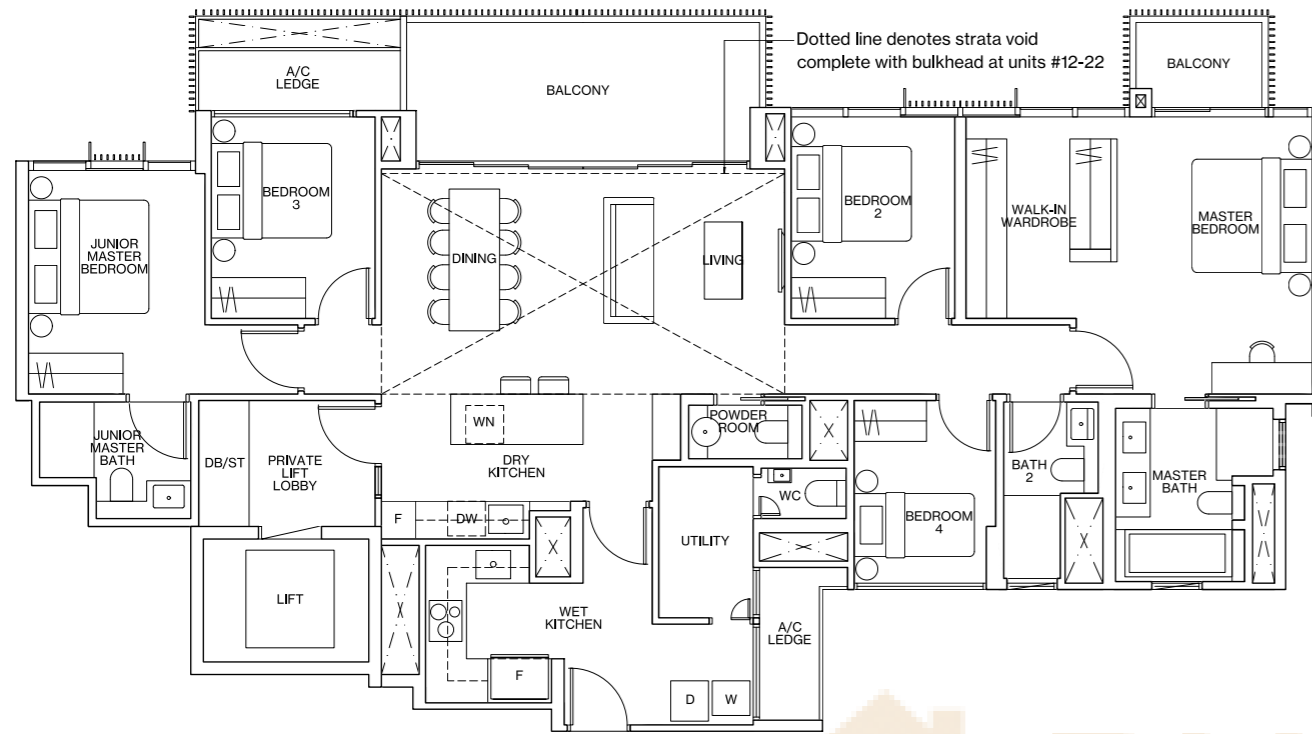


KEY PLAN

ALL PLANS ARE SUBJECT TO CHANGES BY THE RELEVANT AUTHORITIES.
MEASUREMENTS ARE APPROXIMATE ONLY AND SUBJECT TO FINAL SURVEY.
INFORMATION ACCURATE AT POINT OF PRINTING.
BP NO: A1720-00005-2018-BP01 DATED 11 SEPTEMBER 2020.

TYPE E1

[5-BEDROOM PREMIUM]



TYPE E1

169m² / 1819ft²

Inclusive of 6m² Private Lift Lobby,
17m² Balcony & 7m² AC Ledge
BLOCK 12 #11-22

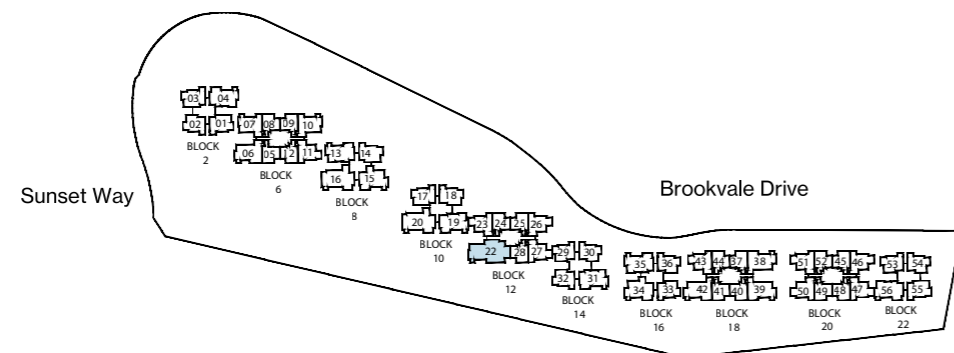
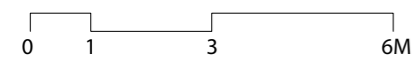
TYPE E1-P

193m² / 2077ft²

Inclusive of 24m² Strata Void,
6m² Private Lift Lobby,
17m² Balcony & 7m² AC Ledge
BLOCK 12 #12-22

LEGEND

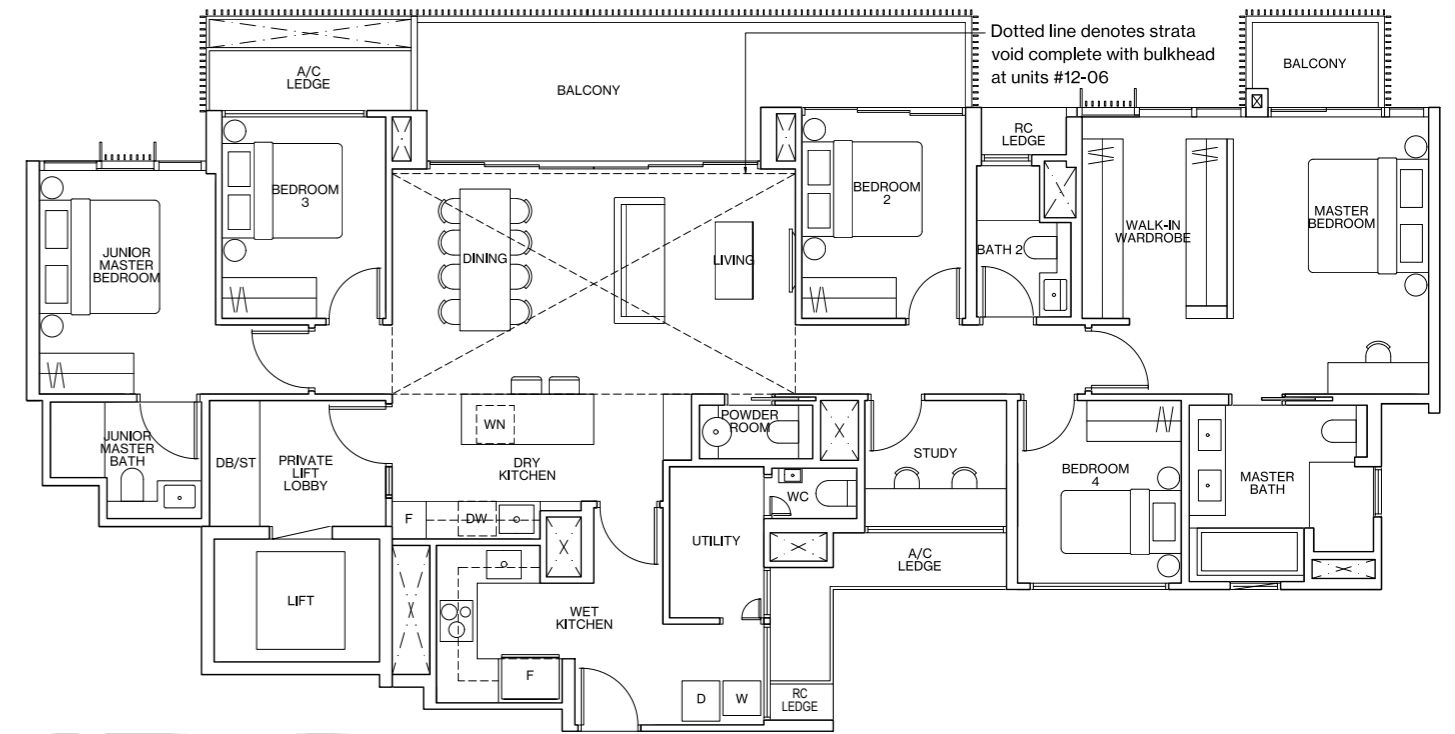
F	FRIDGE
WD	WASHER DRYER COMBO
W	WASHER
D	DRYER
ST	STORE
DB	DISTRIBUTION BOARD
*	MIRRORED UNIT
WN	WINE CHILLER
DW	DISHWASHER



KEY PLAN

TYPE E2

[5-BEDROOM PREMIUM]



TYPE E2

184m² / 1981ft²

Inclusive of 6m² Private Lift Lobby,
21m² Balcony & 9m² AC Ledge
BLOCK 6 #11-06

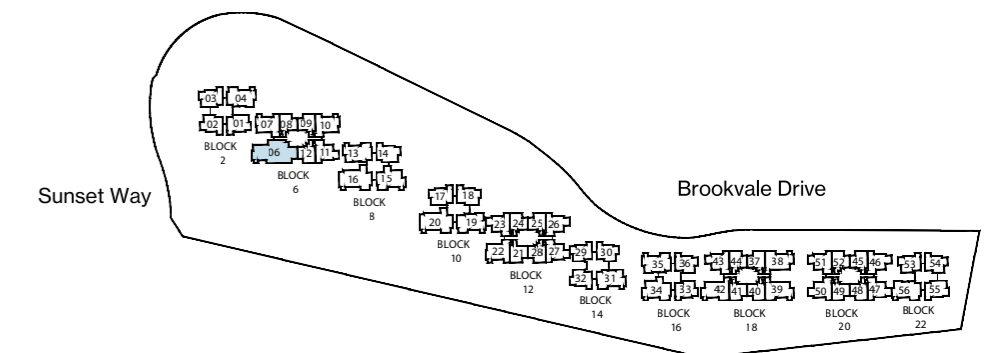
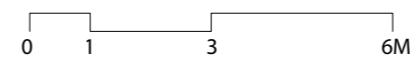
TYPE E2-P

208m² / 2239ft²

Inclusive of 24m² Strata Void,
6m² Private Lift Lobby,
21m² Balcony & 9m² AC Ledge
BLOCK 6 #12-06

LEGEND

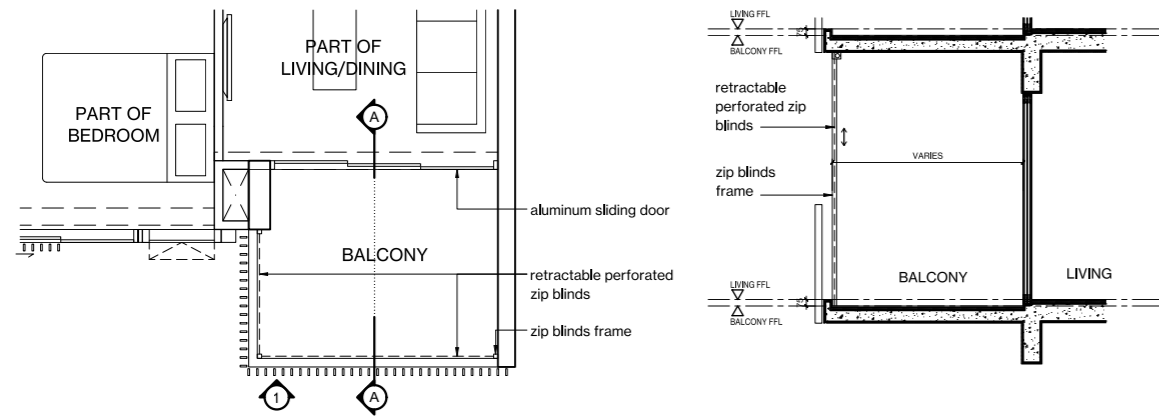
F	FRIDGE
WD	WASHER DRYER COMBO
W	WASHER
D	DRYER
ST	STORE
DB	DISTRIBUTION BOARD
*	MIRRORED UNIT
WN	WINE CHILLER
DW	DISHWASHER



KEY PLAN

ALL PLANS ARE SUBJECT TO CHANGES BY THE RELEVANT AUTHORITIES.
MEASUREMENTS ARE APPROXIMATE ONLY AND SUBJECT TO FINAL SURVEY.
INFORMATION ACCURATE AT POINT OF PRINTING.
BP NO: A1720-00005-2018-BP01 DATED 11 SEPTEMBER 2020.

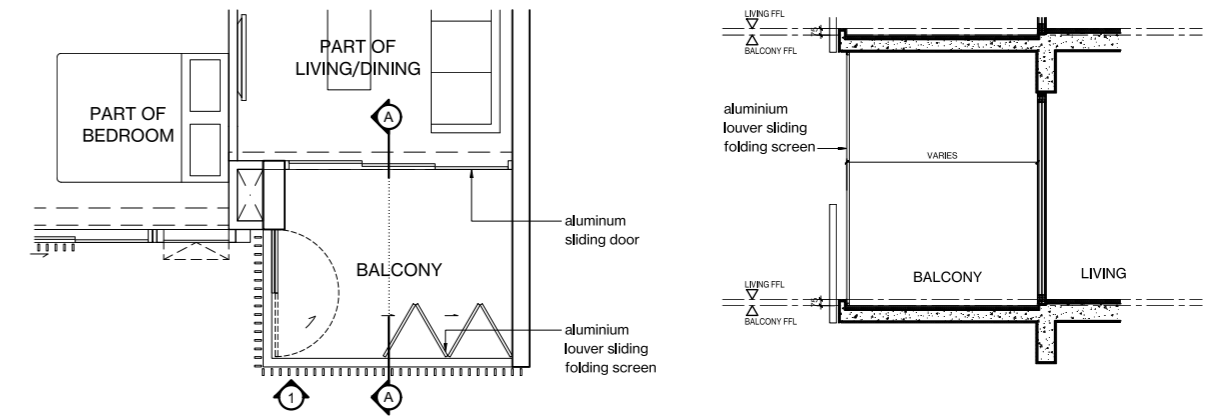
APPROVED BALCONY SCREEN



TYPICAL RETRACTABLE BALCONY SCREEN - PLAN

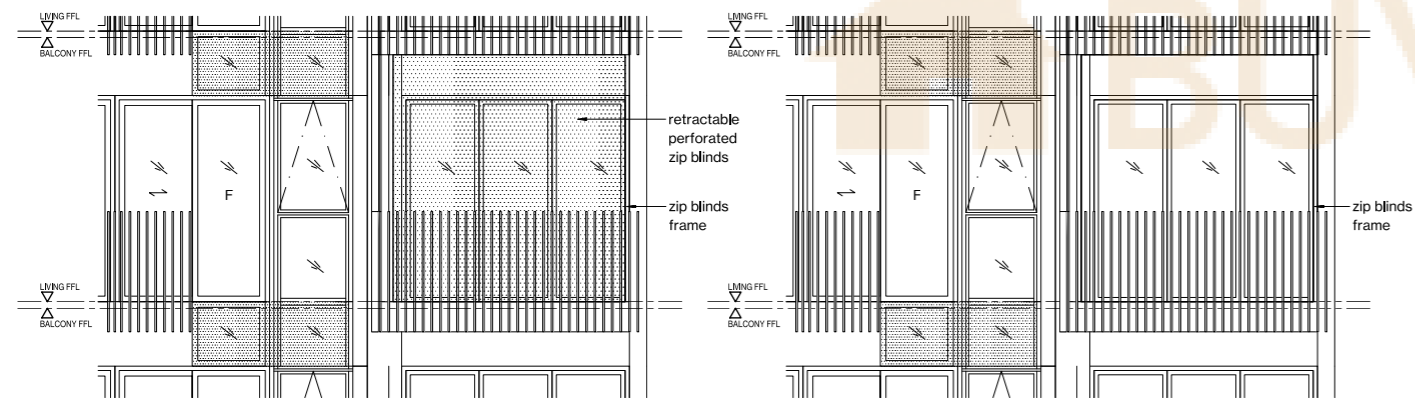
TYPICAL BALCONY SCREEN SECTION

APPROVED BALCONY SCREEN



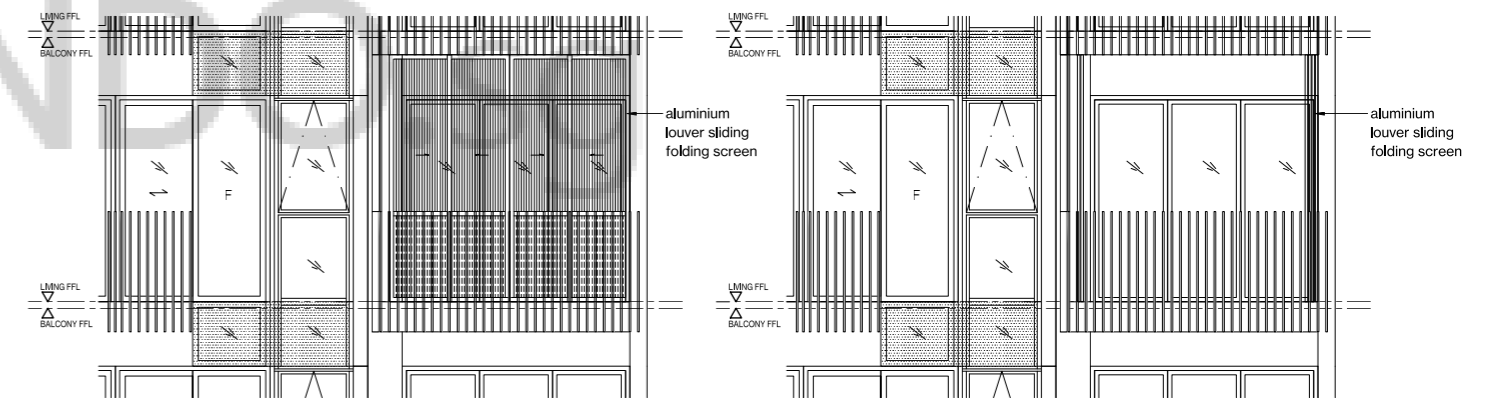
TYPICAL RETRACTABLE BALCONY SCREEN - PLAN

TYPICAL BALCONY SCREEN SECTION



TYPICAL RETRACTABLE BALCONY SCREEN - ELEVATION (FULLY DRAWN)

TYPICAL RETRACTABLE BALCONY SCREEN - ELEVATION (FULLY RETRACTED)



TYPICAL RETRACTABLE BALCONY SCREEN - ELEVATION (FULLY DRAWN)

TYPICAL RETRACTABLE BALCONY SCREEN - ELEVATION (FULLY RETRACTED)

NOTES:

1. Zip blind is not provided for this development (unless otherwise stated).
2. The balcony shall not be enclosed unless the screen is approved by the relevant authorities.
3. Final selection of material, colour and detailing of the screen is subject to MCST approval.
4. Approval from MCST is required before installation.
5. Owner to engage the developer's appointed contractor and/or their own contractor to install the screen.
6. All installation fees to be borne by the owner.
7. Measurements are approximate only and subject to final survey.



NOTES:

1. Aluminium louver sliding folding screen is not provided for this development (unless otherwise stated).
2. The balcony shall not be enclosed unless the screen is approved by the relevant authorities.
3. Final selection of material, colour and detailing of the screen is subject to MCST approval.
4. Approval from MCST is required before installation.
5. Owner to engage the developer's appointed contractor and/or their own contractor to install the screen.
6. All installation fees to be borne by the owner.
7. Measurements are approximate only and subject to final survey.

