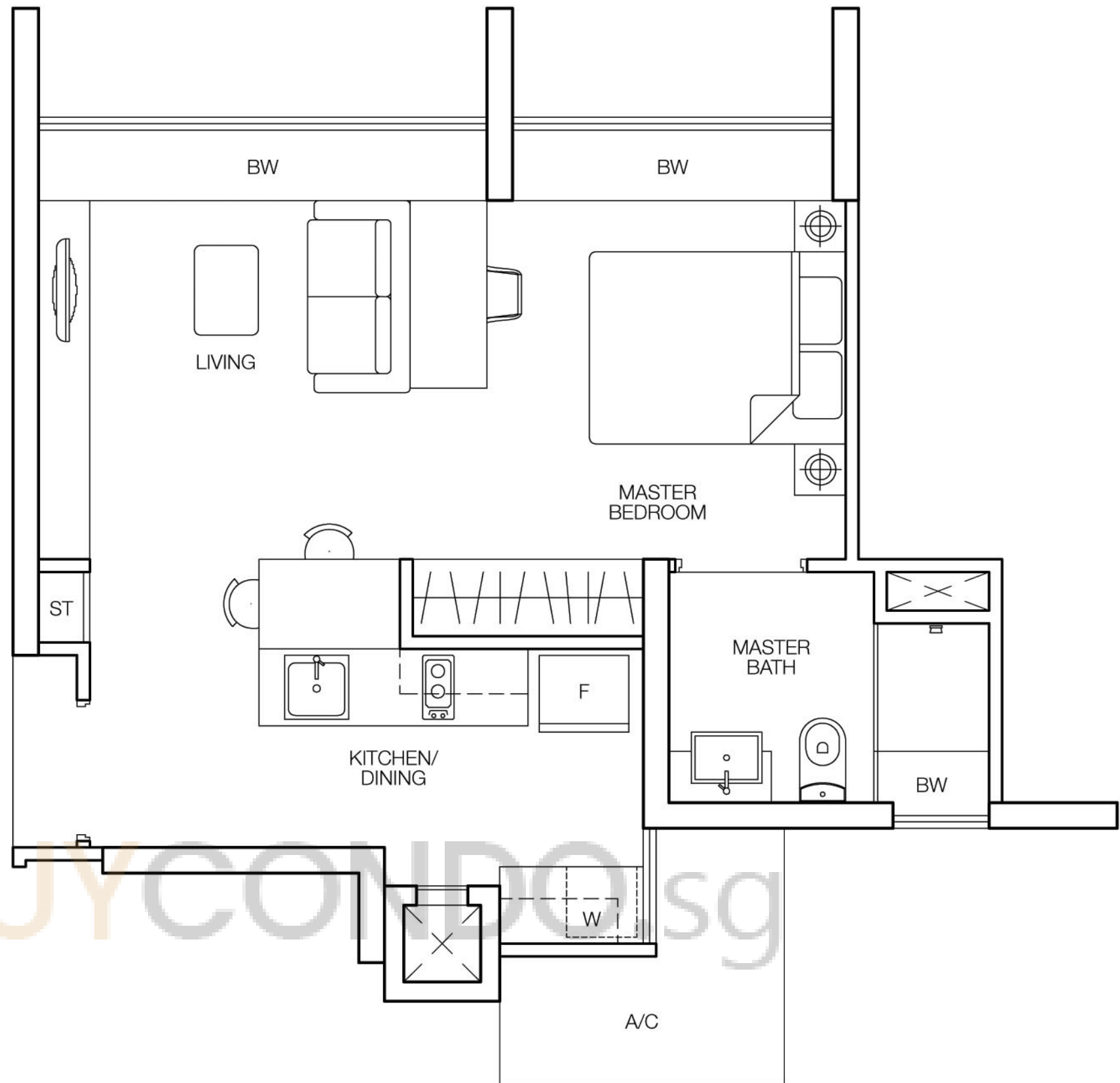


# TYPE A1

43 sq.m. / 463 sq.ft.

#03-20, #03-23, #03-28, #03-31

#04-20, #04-23, #04-28, #04-31



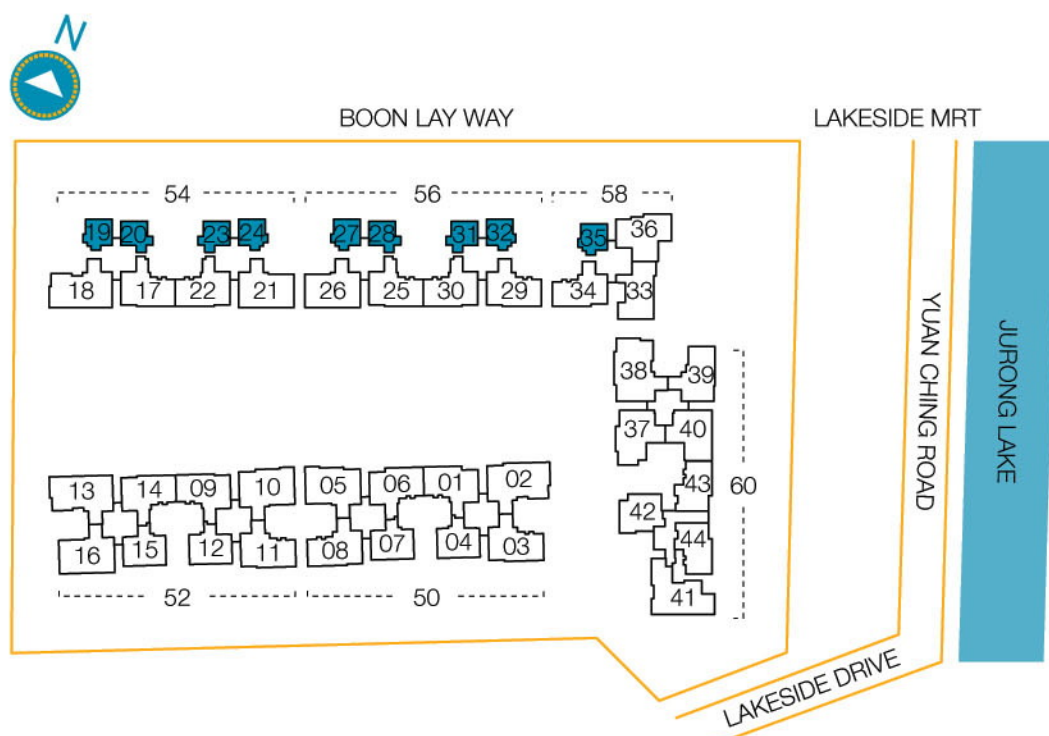
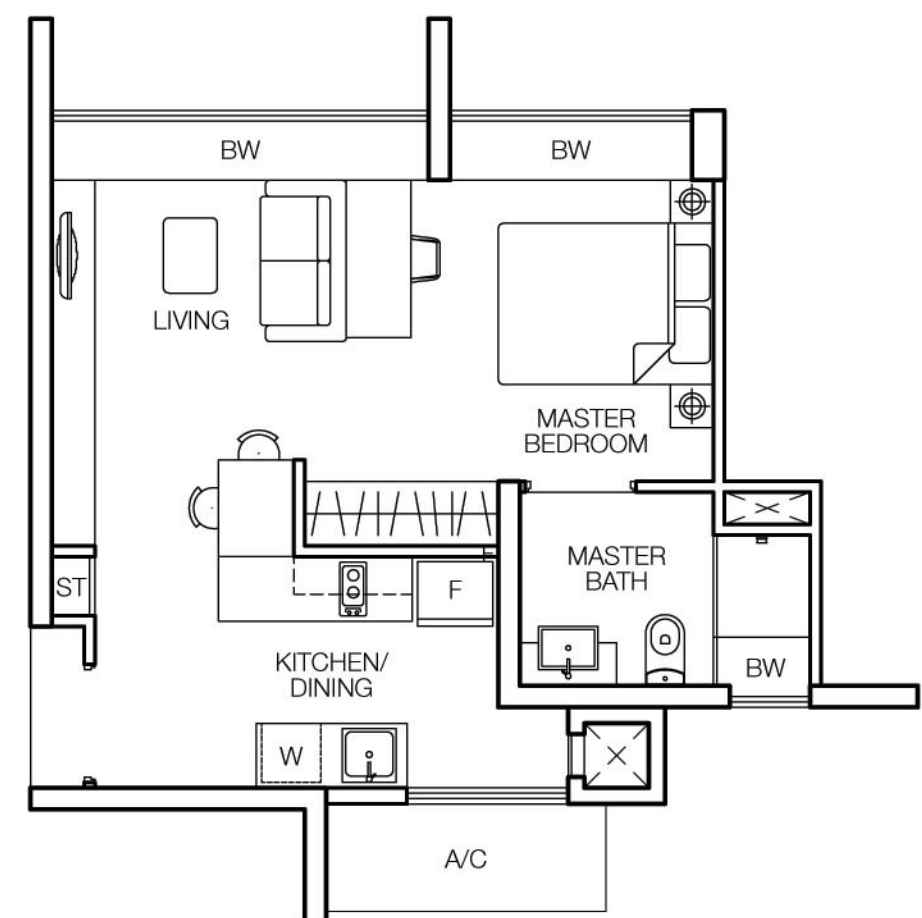
# TYPE A2

43 sq.m. / 463 sq.ft.

#03-19, #03-24, #03-27, #03-32

#03-35, #04-19, #04-24, #04-27

#04-32, #04-35



Area includes PES, A/C ledge, bay window, balcony, planter, roof terrace and void. Some units are mirror images of the apartment plans shown in the brochure. Please refer to the key plans for orientation. All plans are not drawn to scale and are subject to changes as may be approved by the relevant authorities. All floor areas are approximate measurements only and are subject to government resurvey.

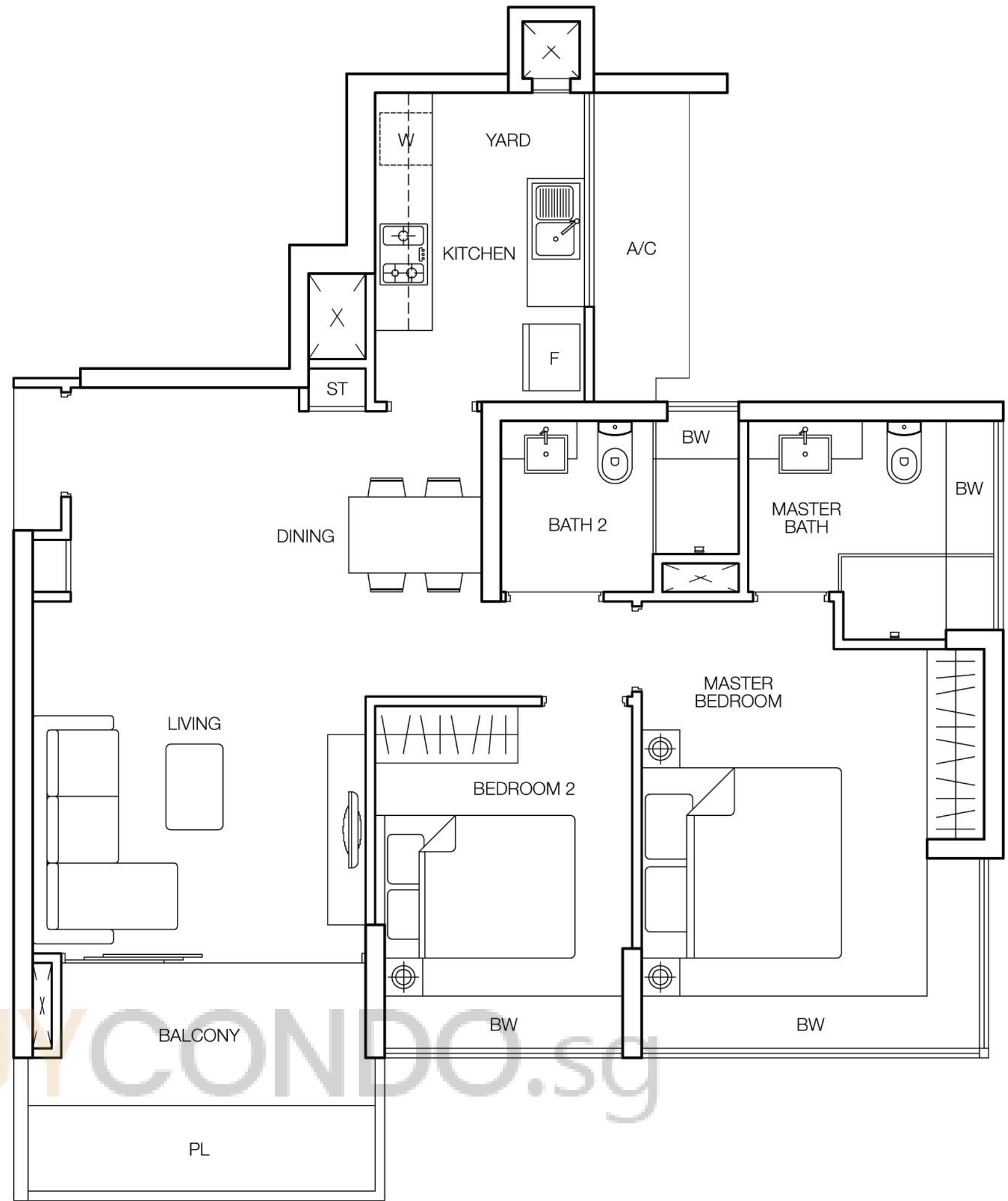
2 BEDROOM

# TYPE B1a

87 sq.m. / 936 sq.ft.

#02-04 to #15-04, #02-07 to #15-07

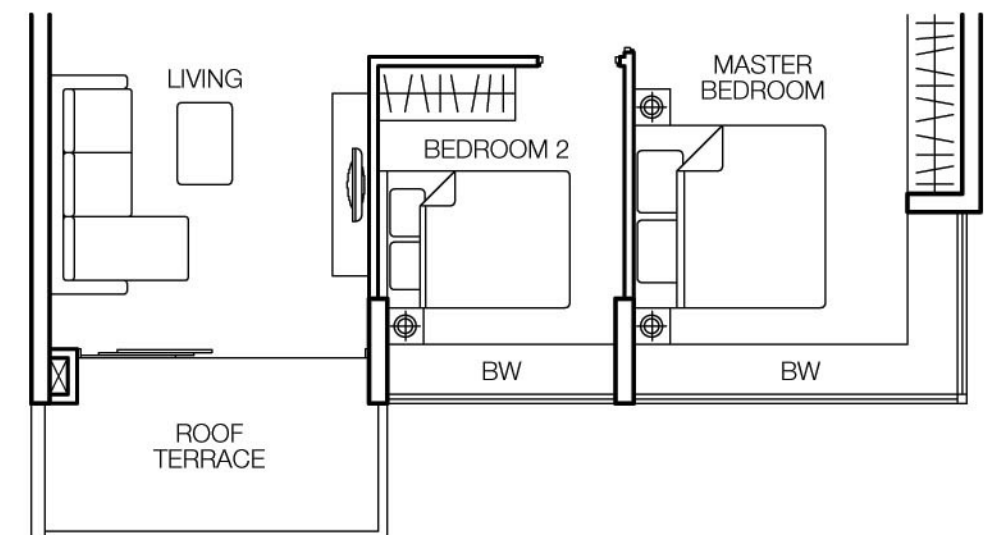
#02-12 to #15-12, #02-15 to #15-15



## TYPE B1at

87 sq.m. / 936 sq.ft.

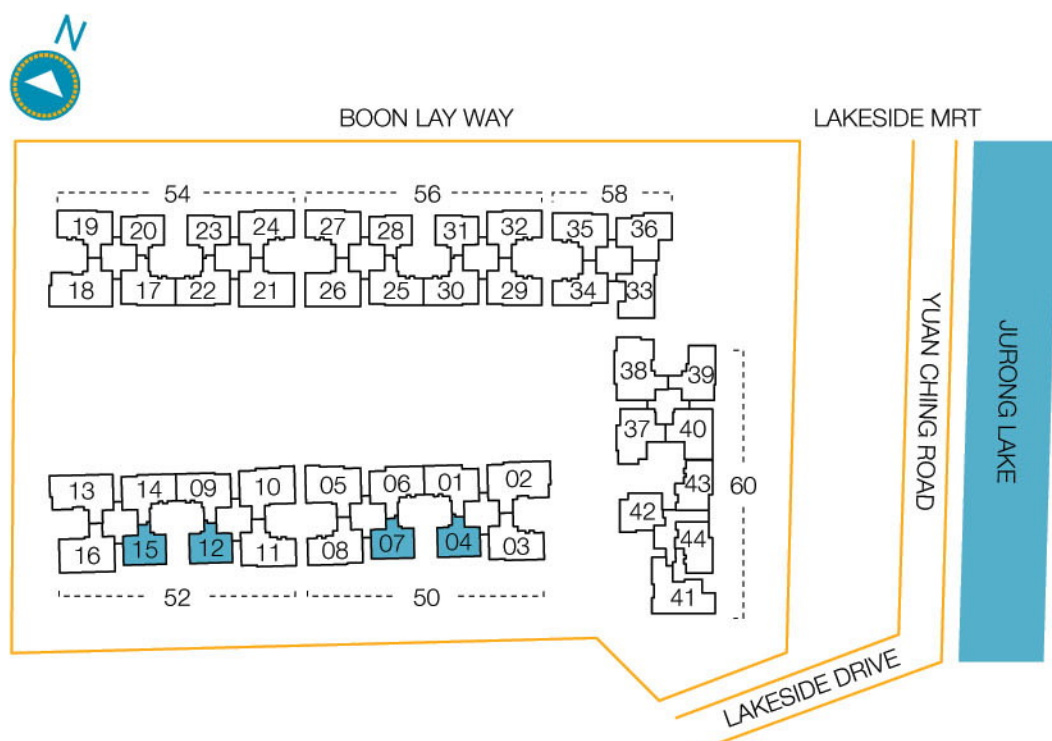
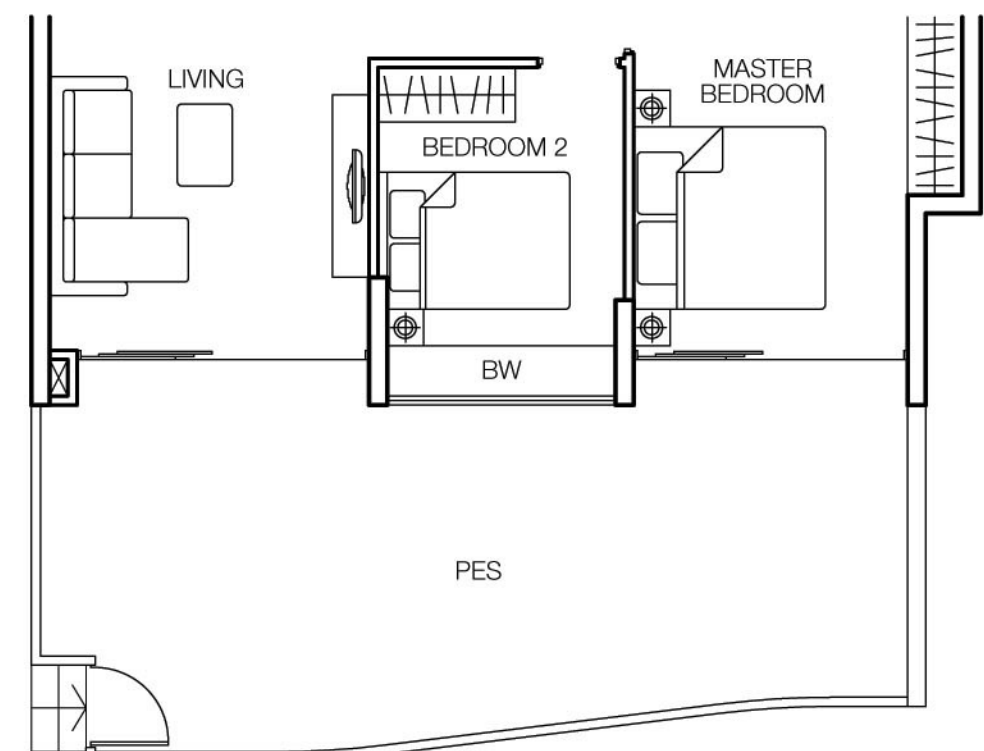
#16-04, #16-07, #16-12, #16-15



## TYPE B1p

116 sq.m. / 1,249 sq.ft.

#01-04, #01-07, #01-12, #01-15



Area includes PES, A/C ledge, bay window, balcony, planter, roof terrace and void. Some units are mirror images of the apartment plans shown in the brochure. Please refer to the key plans for orientation. All plans are not drawn to scale and are subject to changes as may be approved by the relevant authorities. All floor areas are approximate measurements only and are subject to government resurvey.

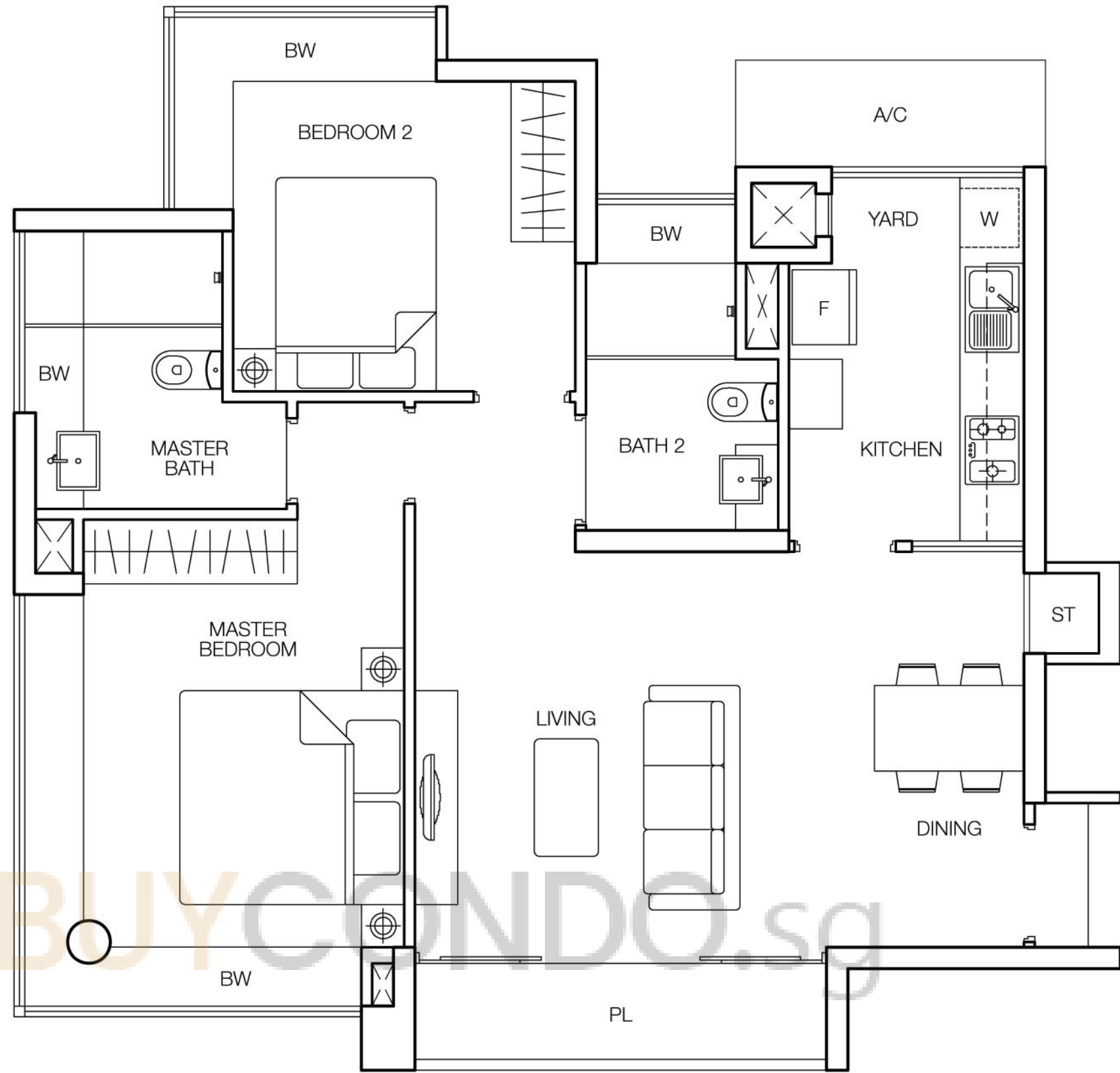


2 BEDROOM

# TYPE B2

83 sq.m. / 893 sq.ft.

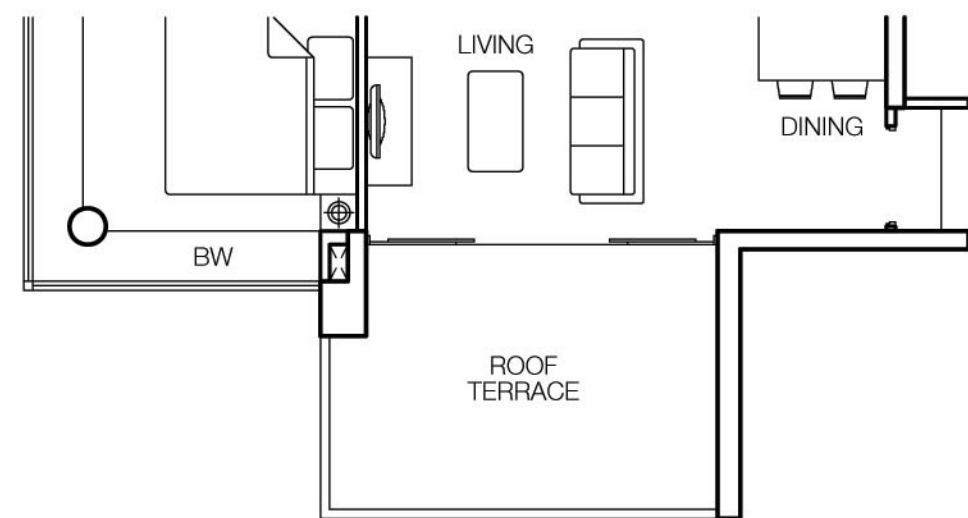
#02-42 to #16-42



## TYPE B2t

94 sq.m. / 1,012 sq.ft.

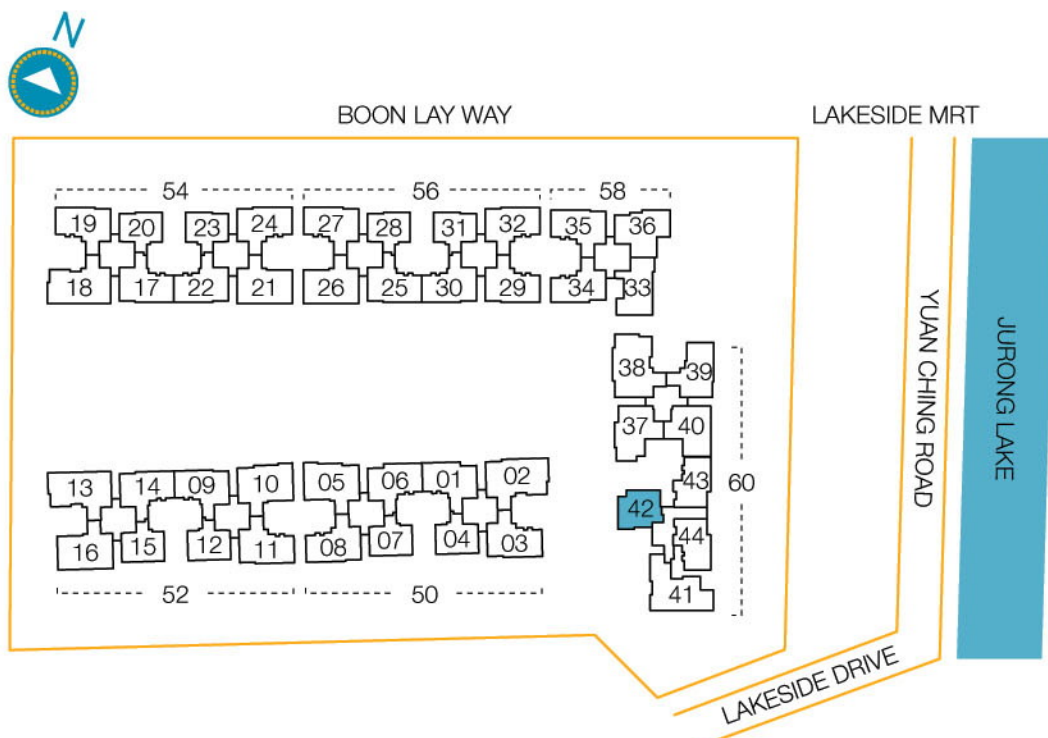
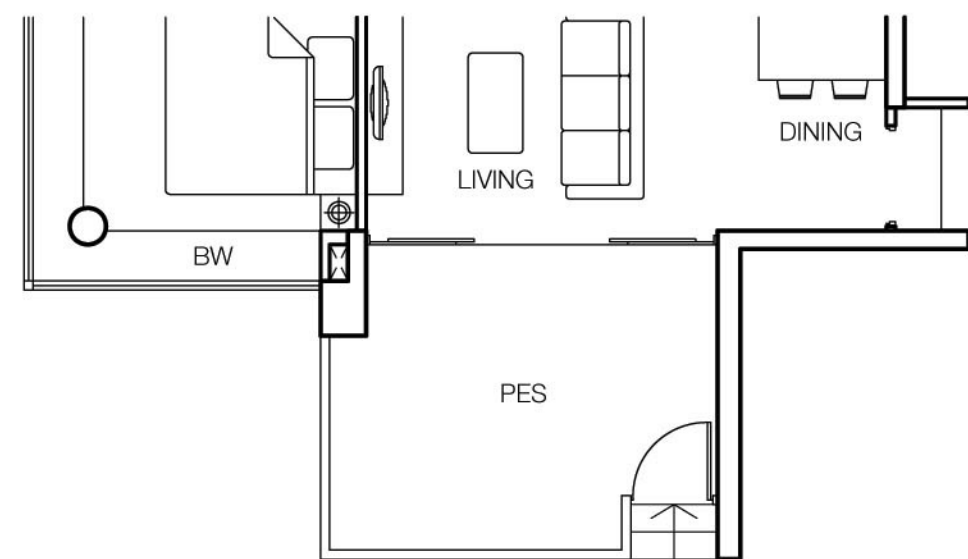
#17-42



## TYPE B2p

94 sq.m. / 1,012 sq.ft.

#01-42



Area includes PES, A/C ledge, bay window, balcony, planter, roof terrace and void. Some units are mirror images of the apartment plans shown in the brochure. Please refer to the key plans for orientation. All plans are not drawn to scale and are subject to changes as may be approved by the relevant authorities. All floor areas are approximate measurements only and are subject to government resurvey.

2 BEDROOM + STUDY

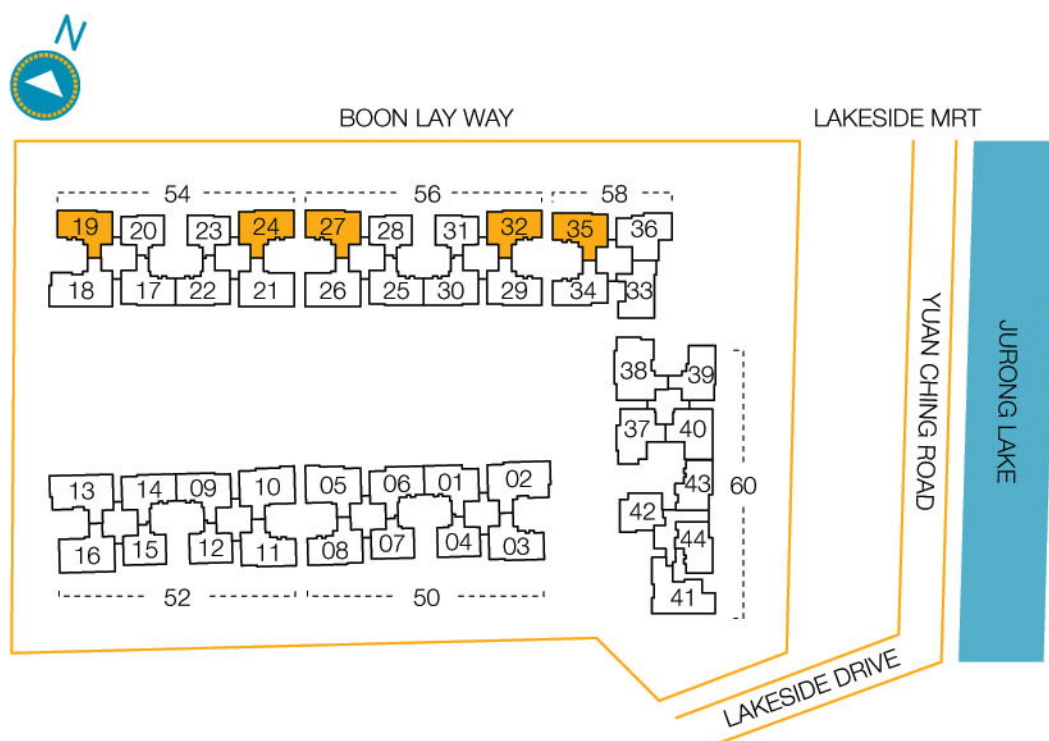
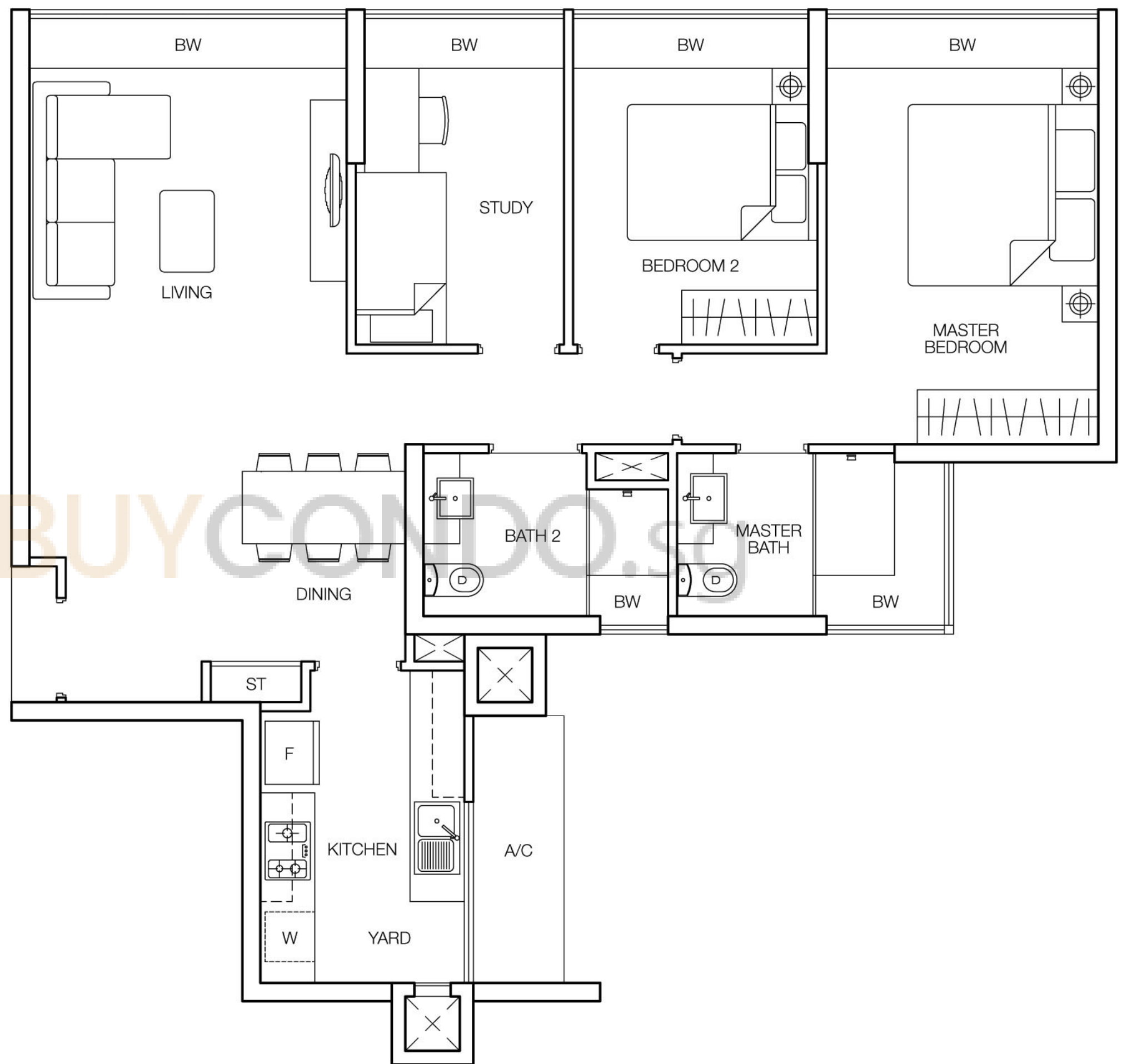
# TYPE C1

93 sq.m. / 1,001 sq.ft.

#05-19 to #17-19, #05-24 to #17-24

#05-27 to #17-27, #05-32 to #17-32

#05-35 to #17-35



Area includes PES, A/C ledge, bay window, balcony, planter, roof terrace and void. Some units are mirror images of the apartment plans shown in the brochure. Please refer to the key plans for orientation. All plans are not drawn to scale and are subject to changes as may be approved by the relevant authorities. All floor areas are approximate measurements only and are subject to government resurvey.



3 BEDROOM

# TYPE D1

115 sq.m. / 1,238 sq.ft.

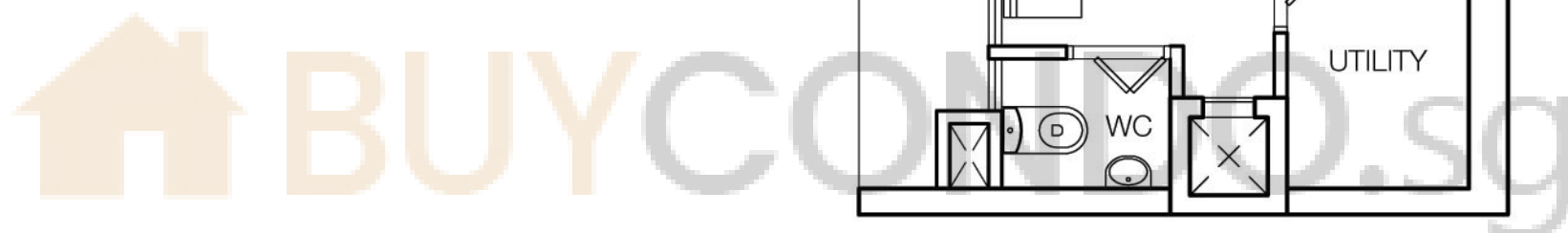
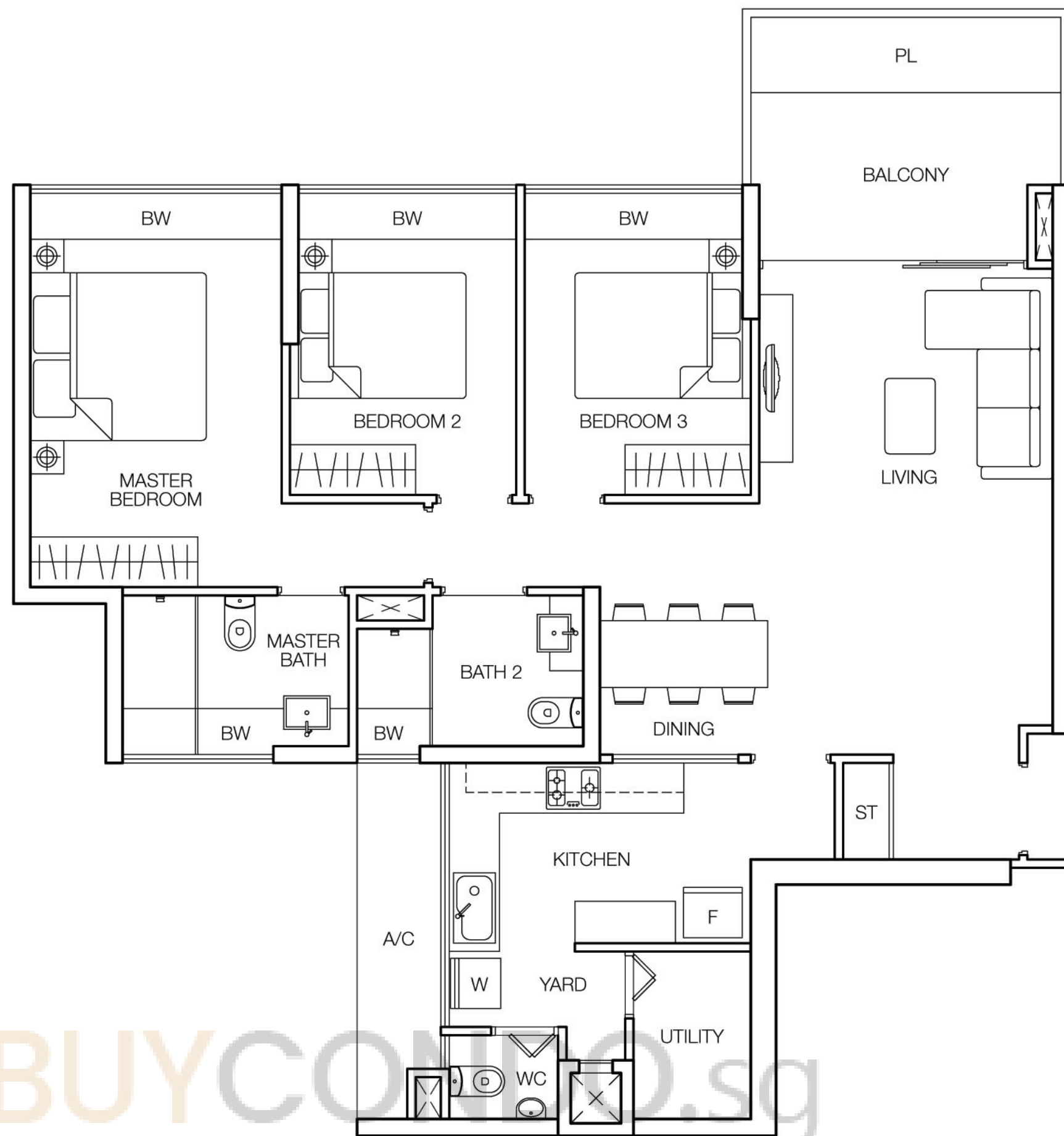
#02-01 to #16-01, #02-06 to #16-06

#02-09 to #16-09, #02-14 to #16-14

#02-17 to #16-17, #02-22 to #16-22

#02-25 to #16-25, #02-30 to #16-30

#02-40 to #15-40



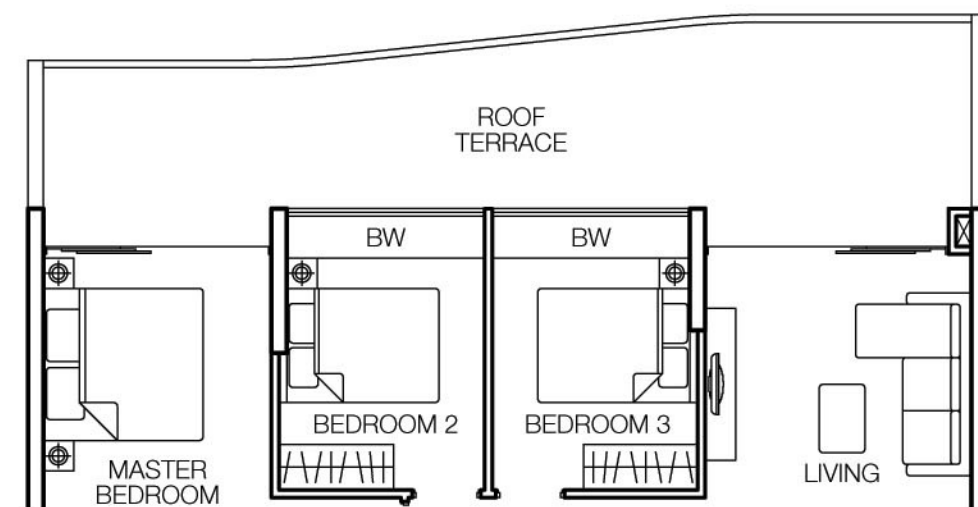
## TYPE D1t

135 sq.m. / 1,453 sq.ft.

#17-01, #17-06, #17-09, #17-14

#17-17, #17-22, #17-25, #17-30

#16-40



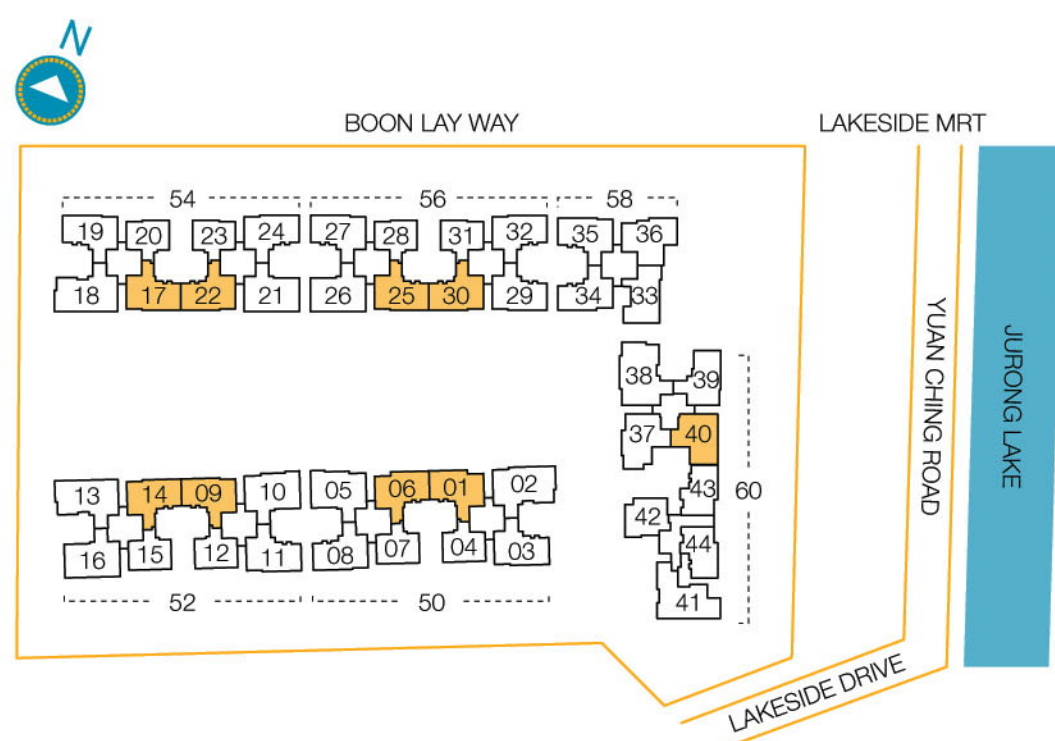
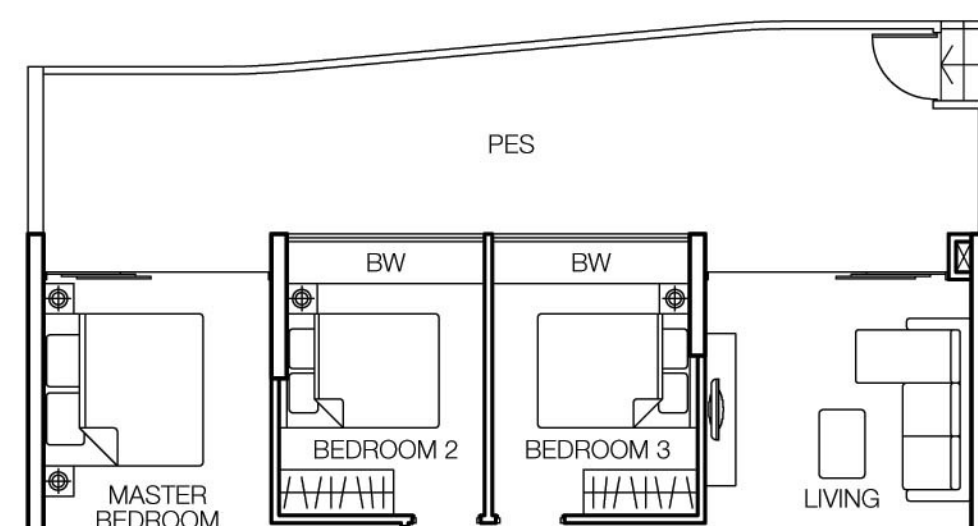
## TYPE D1p

138 sq.m. / 1,485 sq.ft.

#01-01, #01-06, #01-09, #01-14

#01-17, #01-22, #01-25, #01-30

#01-40



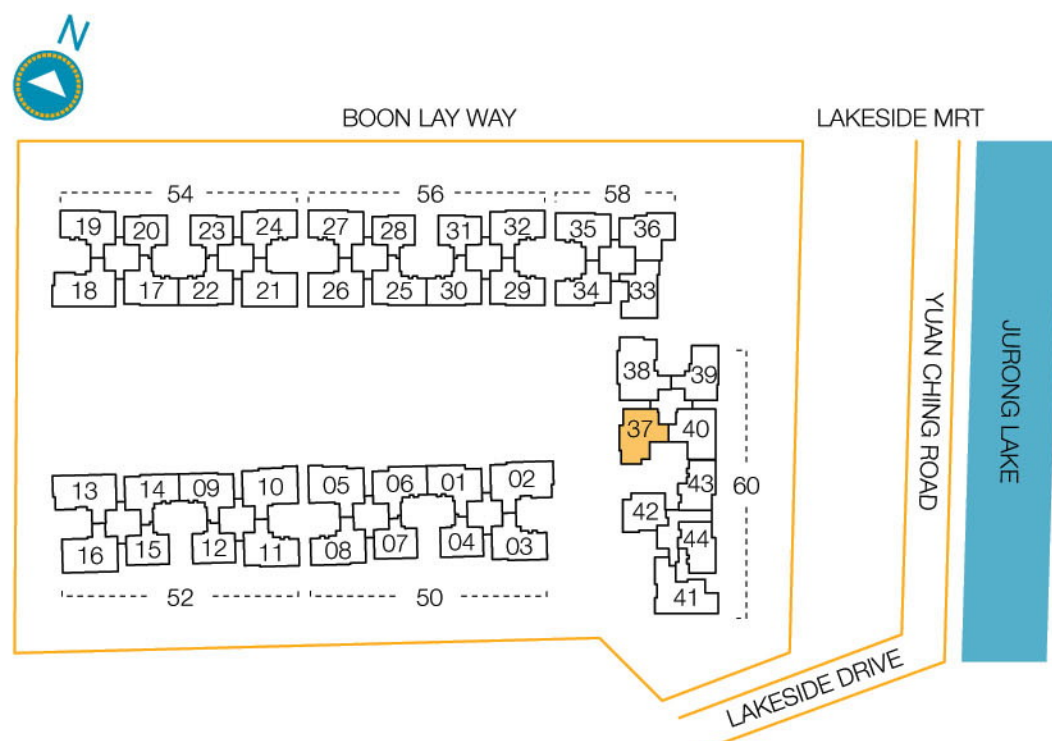
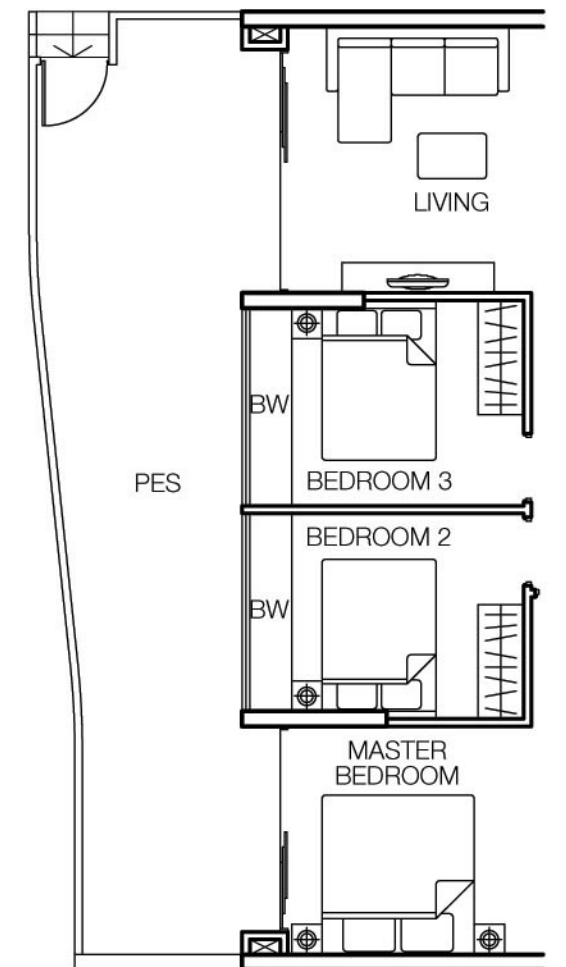
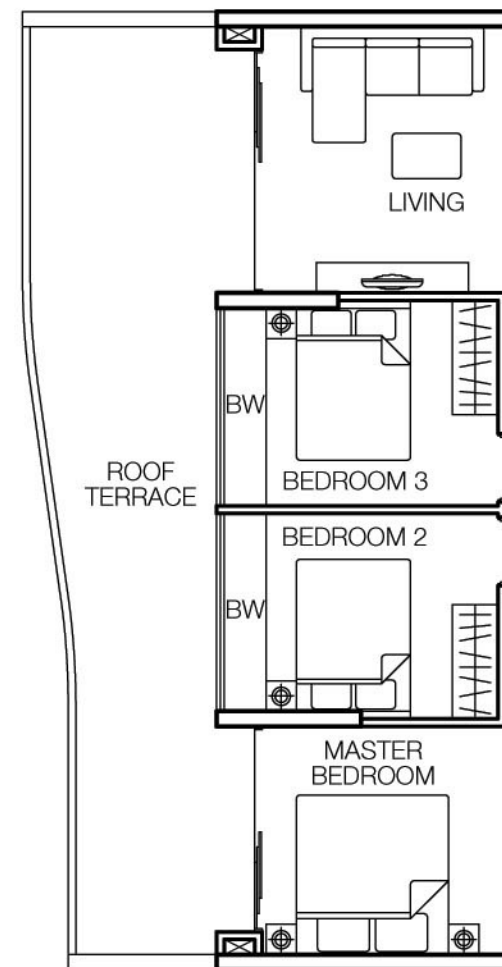
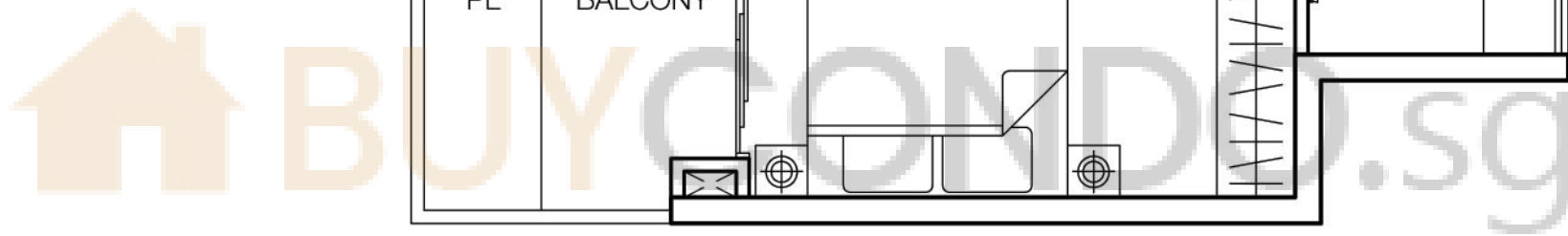
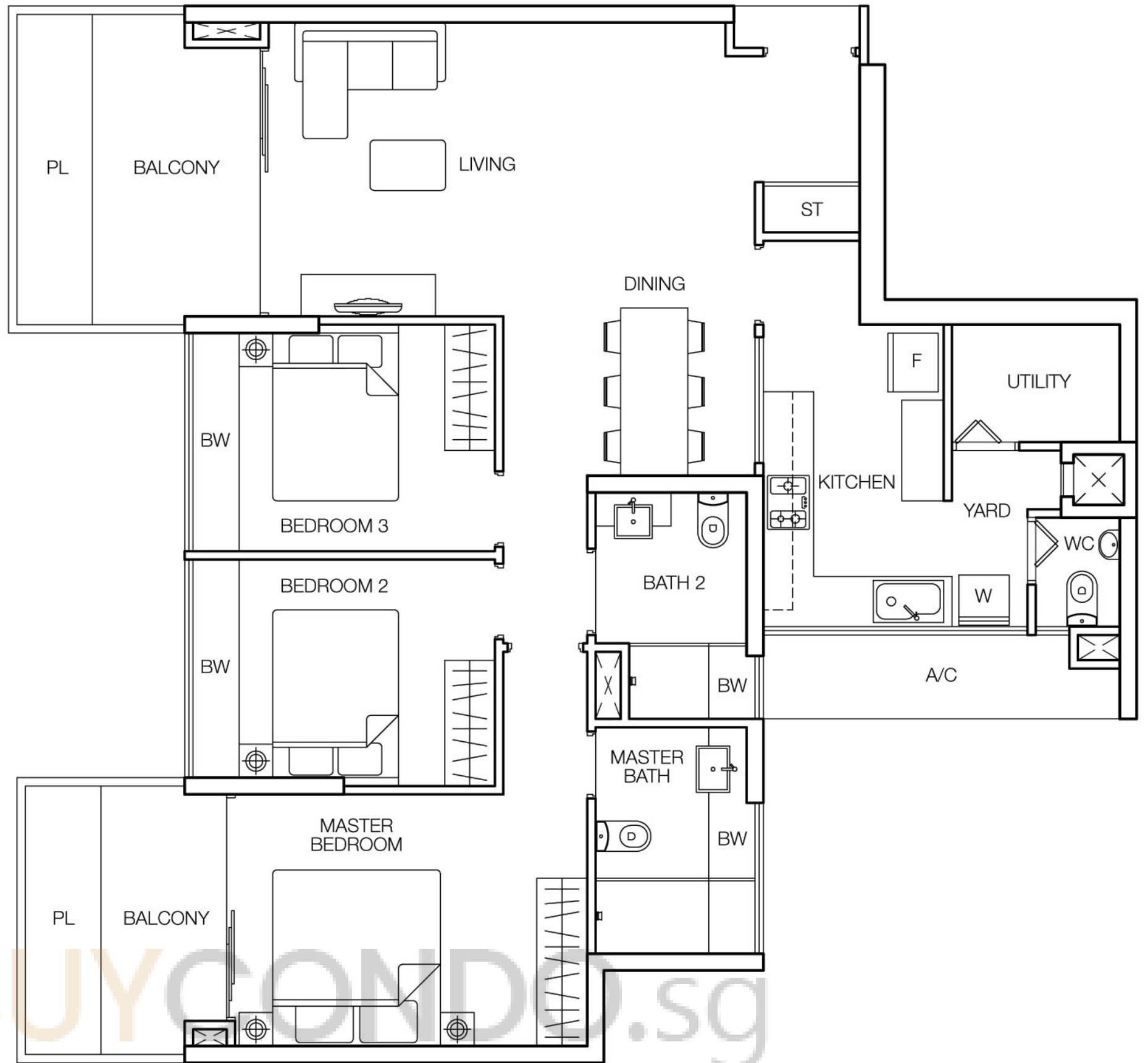
Area includes PES, A/C ledge, bay window, balcony, planter, roof terrace and void. Some units are mirror images of the apartment plans shown in the brochure. Please refer to the key plans for orientation. All plans are not drawn to scale and are subject to changes as may be approved by the relevant authorities. All floor areas are approximate measurements only and are subject to government resurvey.

3 BEDROOM

# TYPE D1a

121 sq.m. / 1,302 sq.ft.

#02-37 to #16-37



## TYPE D1at

135 sq.m. / 1,453 sq.ft.

#17-37

## TYPE D1ap

138 sq.m. / 1,485 sq.ft.

#01-37

Area includes PES, A/C ledge, bay window, balcony, planter, roof terrace and void. Some units are mirror images of the apartment plans shown in the brochure. Please refer to the key plans for orientation. All plans are not drawn to scale and are subject to changes as may be approved by the relevant authorities. All floor areas are approximate measurements only and are subject to government resurvey.



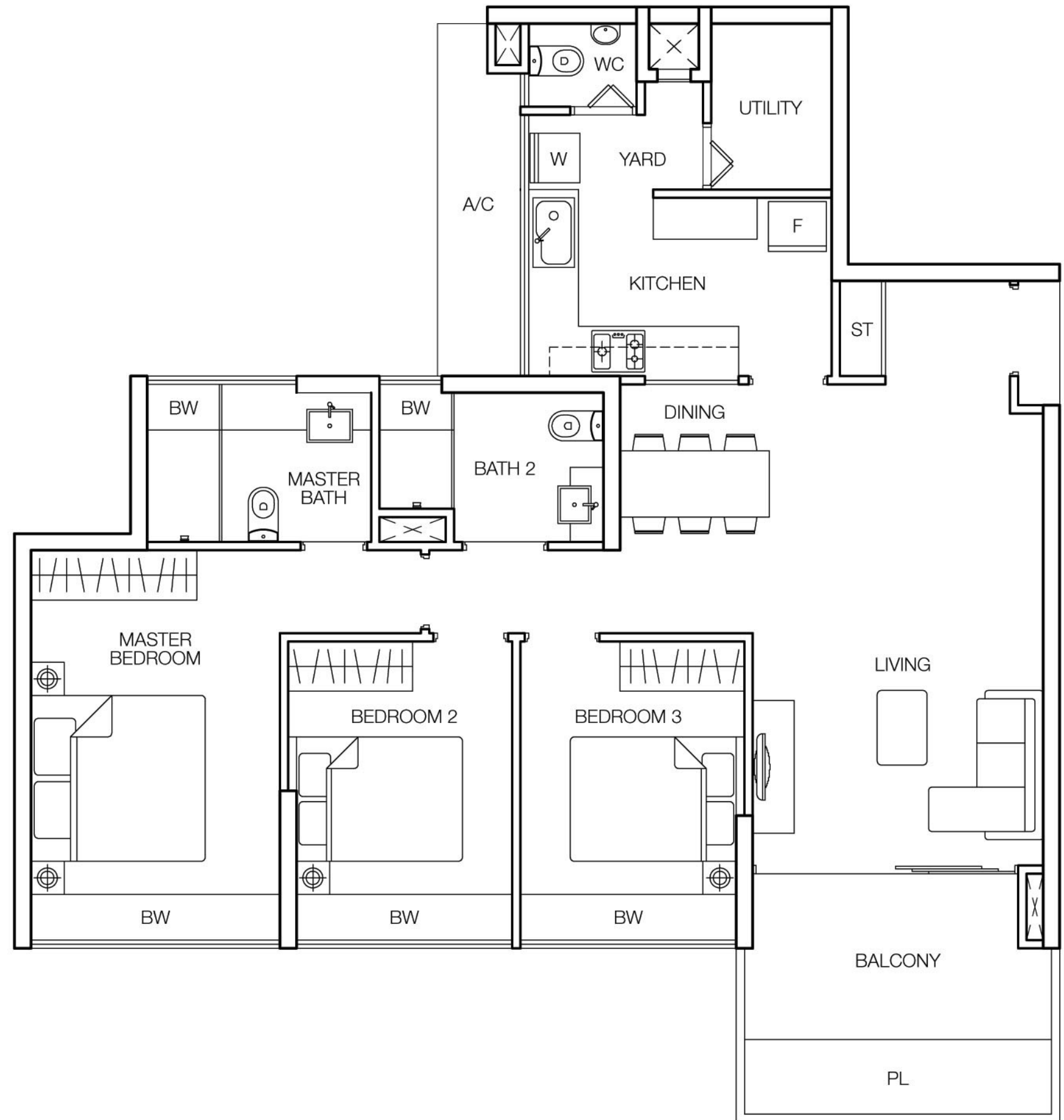
3 BEDROOM

# TYPE D2

113 sq.m. / 1,216 sq.ft.

#02-29 to #16-29, #02-34 to #16-34

#02-39 to #16-39

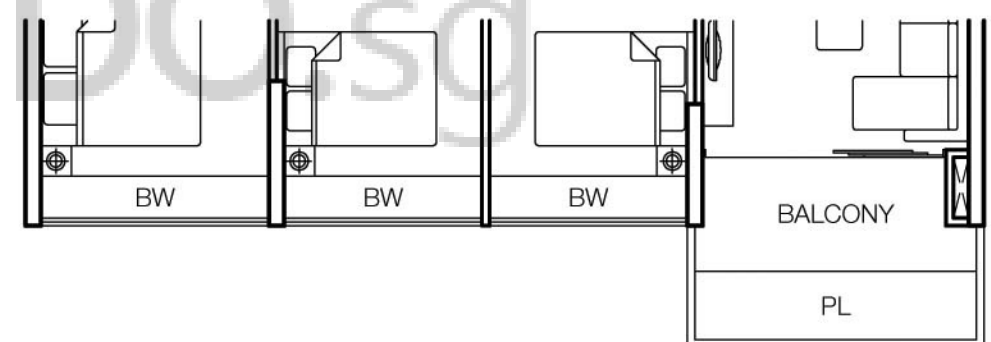


## TYPE D2a

111 sq.m. / 1,195 sq.ft.

#02-03 to #16-03, #02-08 to #16-08

#02-11 to #16-11

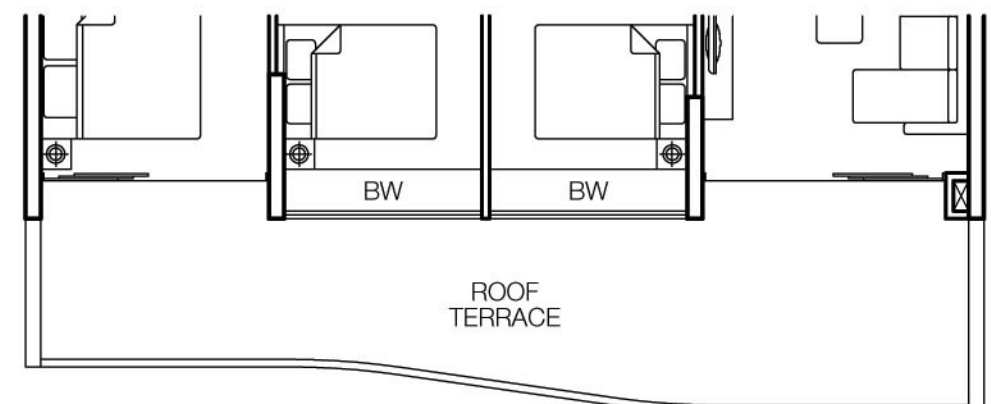


## TYPE D2t

133 sq.m. / 1,432 sq.ft.

#17-03, #17-08, #17-11, #17-29

#17-34, #17-39

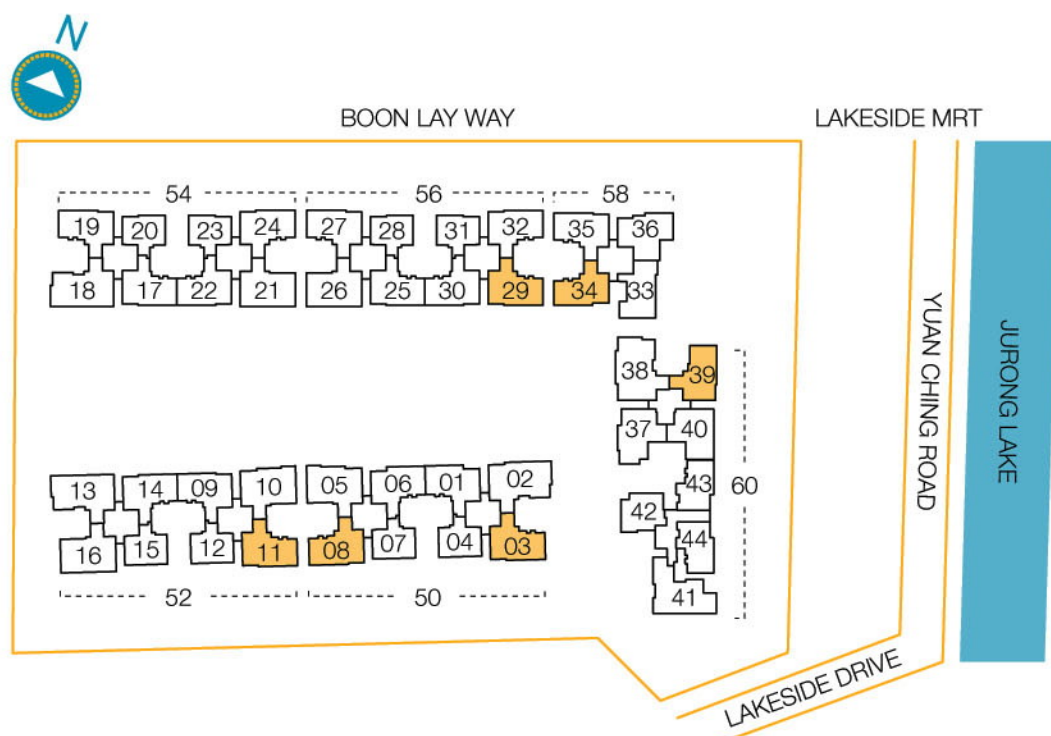
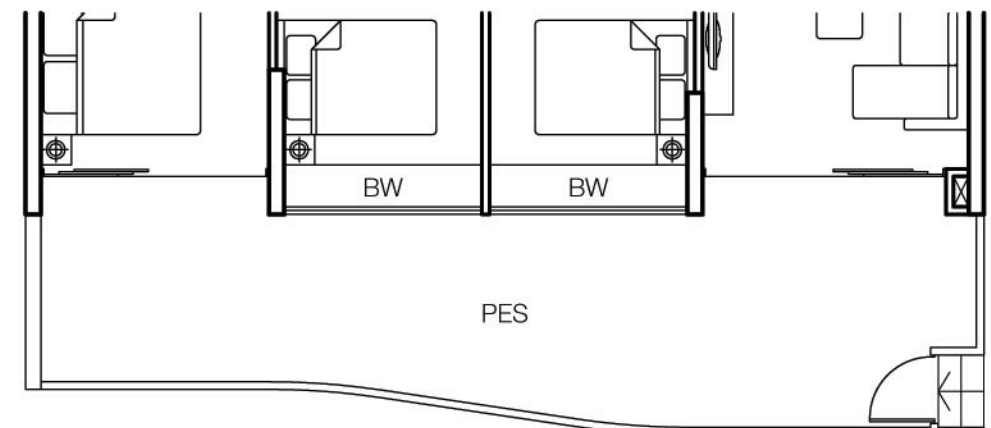


## TYPE D2p

138 sq.m. / 1,485 sq.ft.

#01-03, #01-08, #01-11, #01-29

#01-34, #01-39



Area includes PES, A/C ledge, bay window, balcony, planter, roof terrace and void. Some units are mirror images of the apartment plans shown in the brochure. Please refer to the key plans for orientation. All plans are not drawn to scale and are subject to changes as may be approved by the relevant authorities. All floor areas are approximate measurements only and are subject to government resurvey.

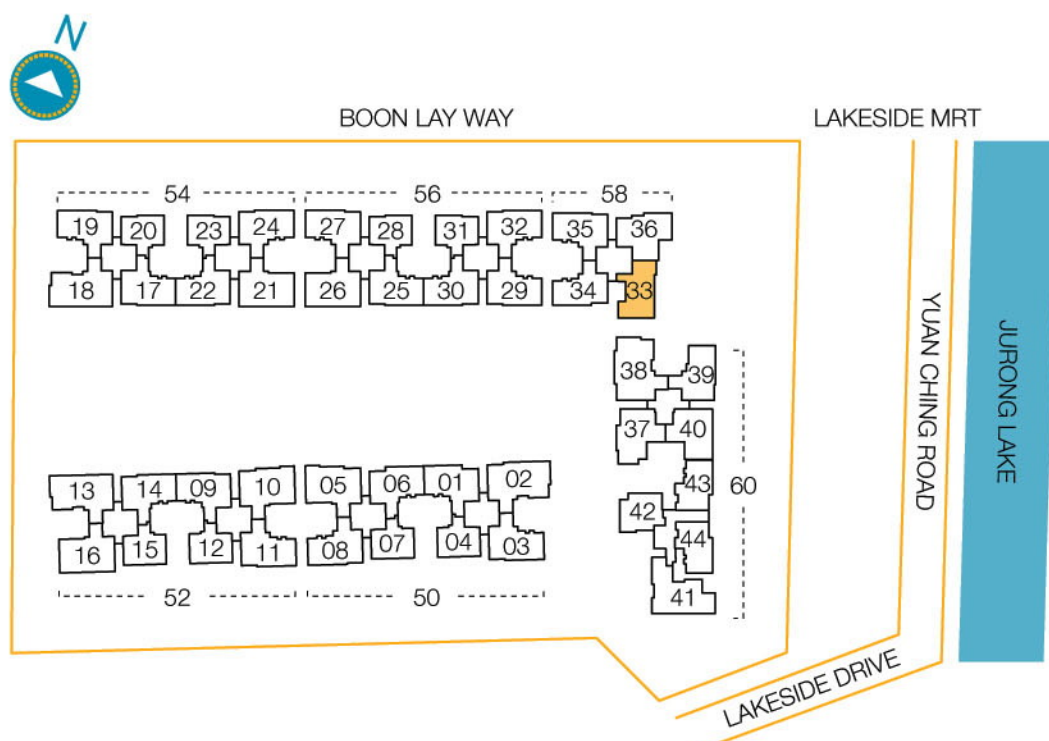
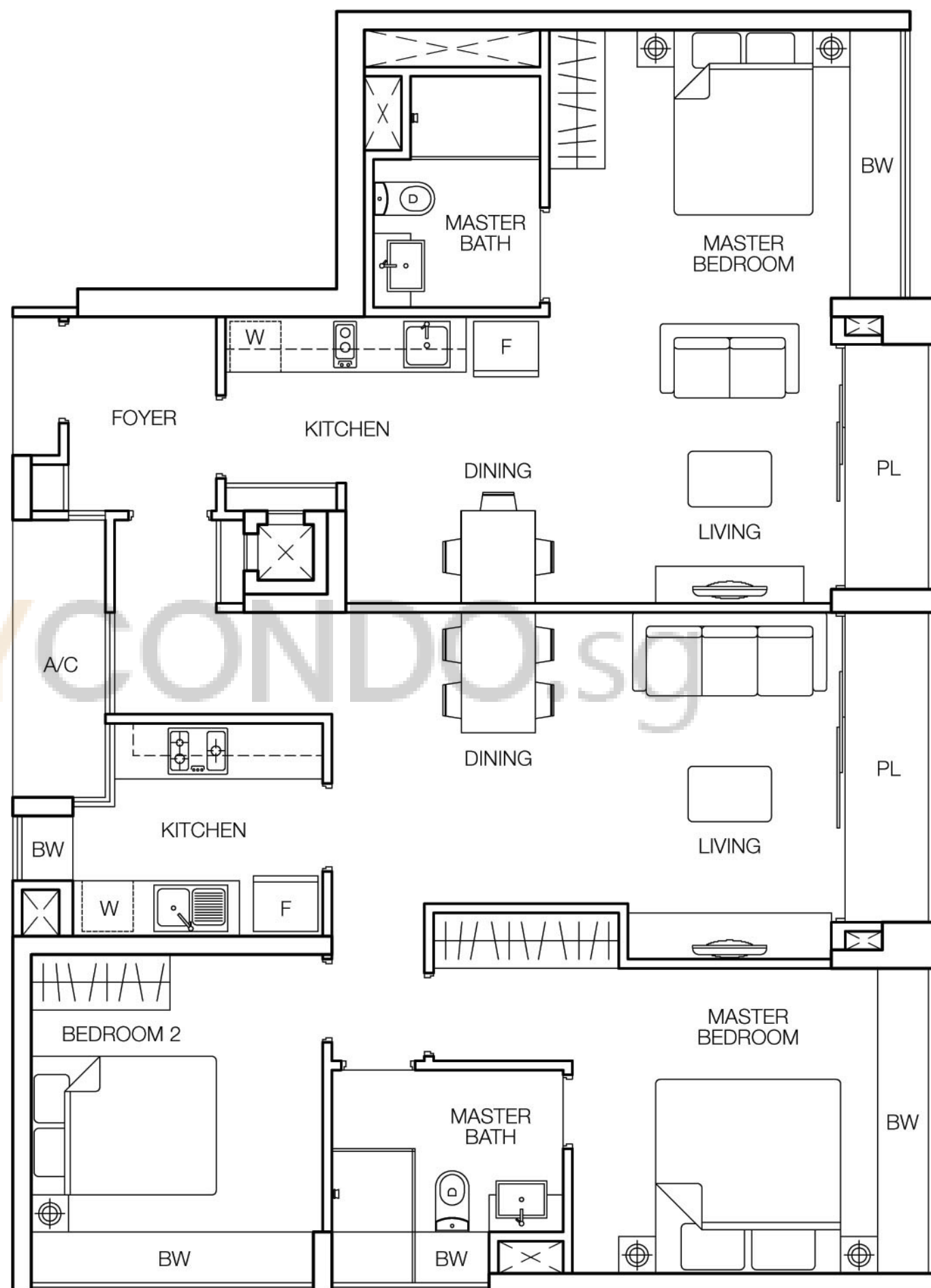


3 BEDROOM (Dual Key Unit)

# TYPE D3

119 sq.m. / 1,281 sq.ft.

#03-33 to #17-33



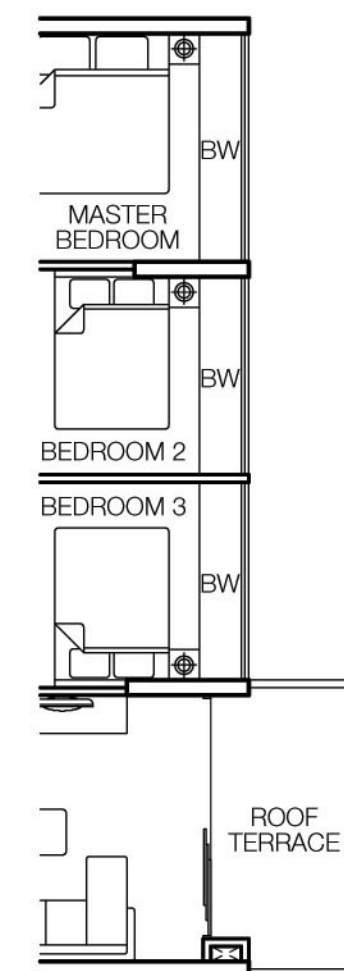
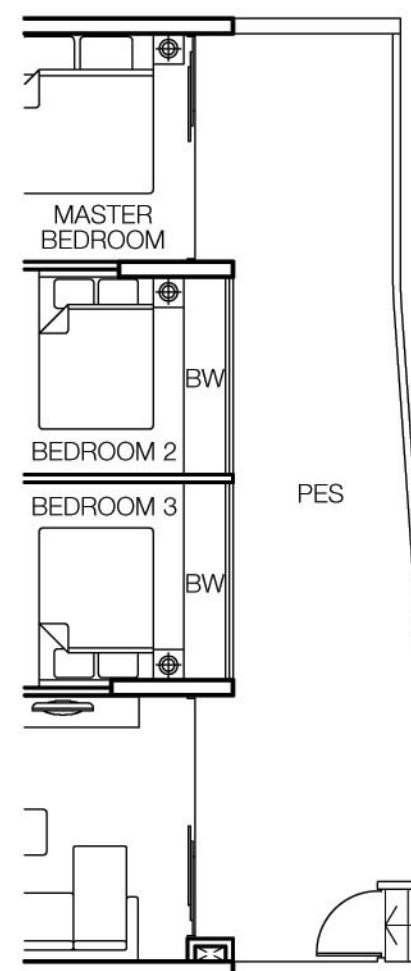
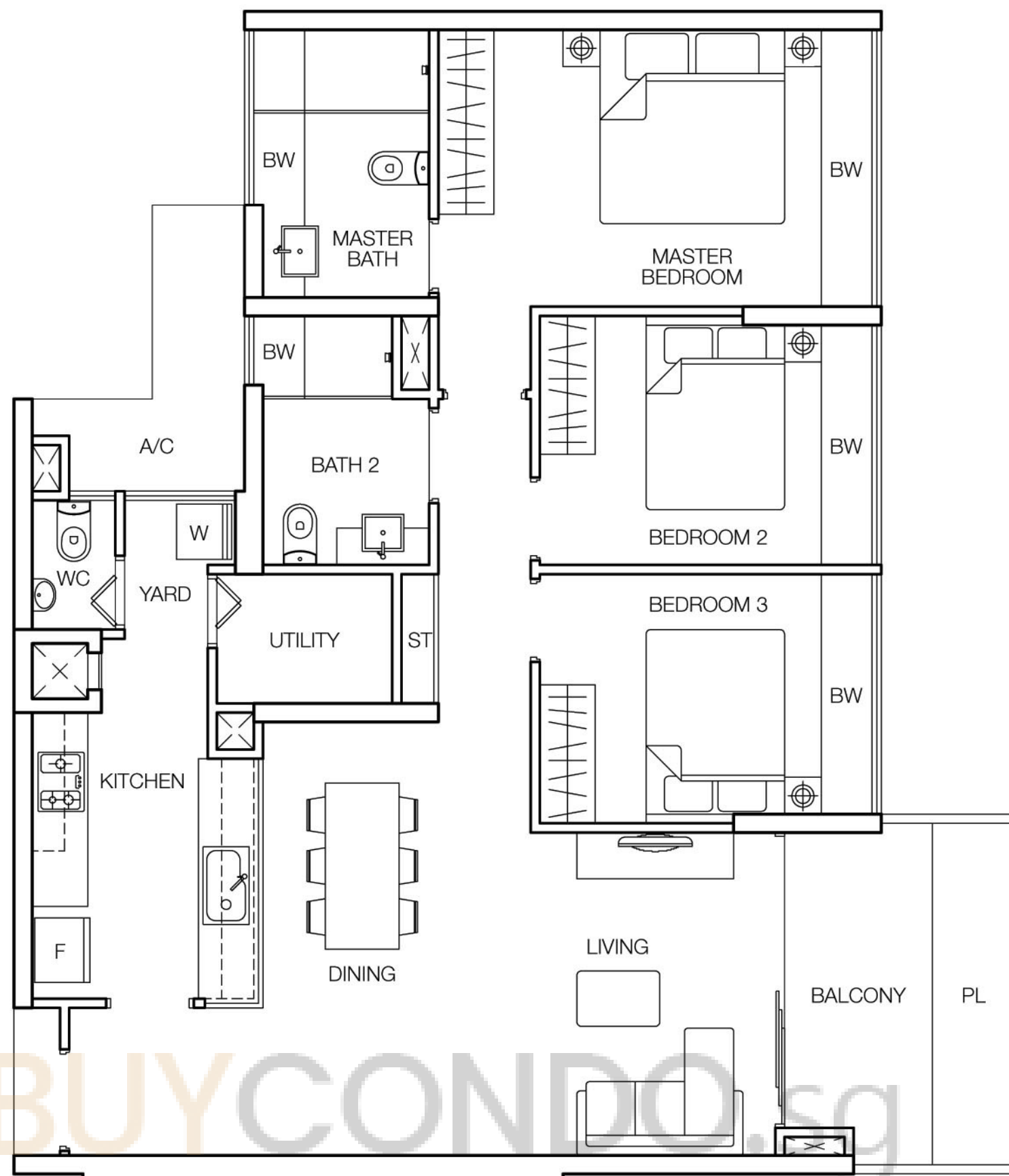
Area includes PES, A/C ledge, bay window, balcony, planter, roof terrace and void. Some units are mirror images of the apartment plans shown in the brochure. Please refer to the key plans for orientation. All plans are not drawn to scale and are subject to changes as may be approved by the relevant authorities. All floor areas are approximate measurements only and are subject to government resurvey.

3 BEDROOM

# TYPE D4

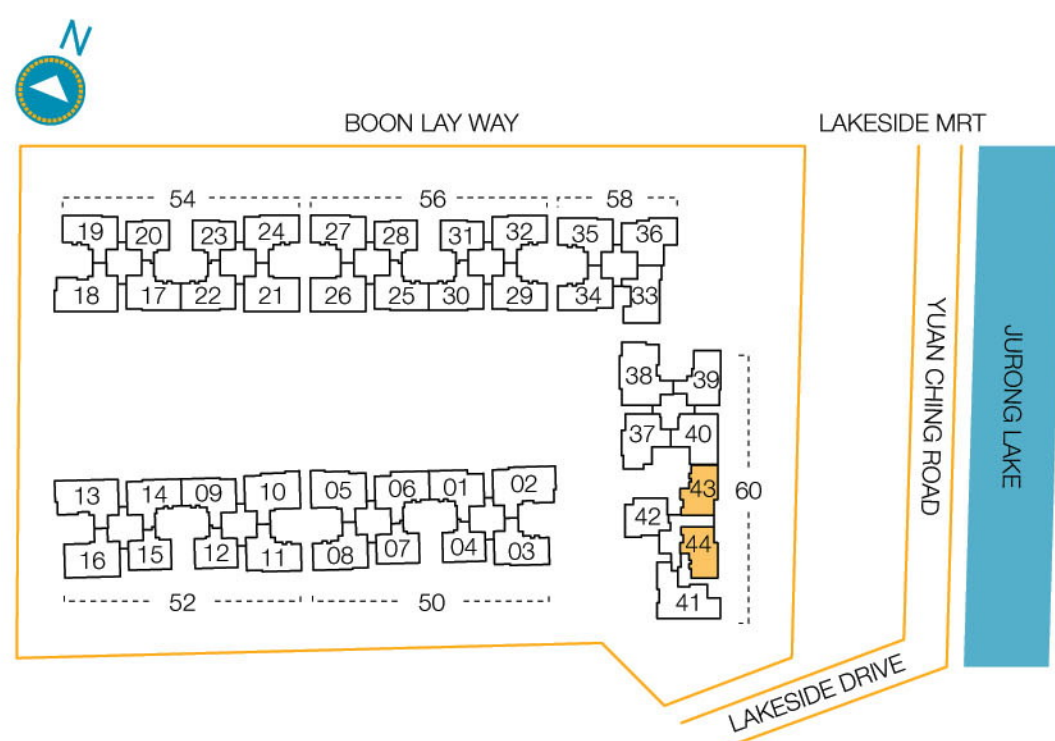
112 sq.m. / 1,206 sq.ft.

#02-43 to #15-43, #02-44 to #16-44



**TYPE D4p**  
136 sq.m. / 1,464 sq.ft.  
#01-43

**TYPE D4t**  
112 sq.m. / 1,206 sq.ft.  
#16-43, #17-44



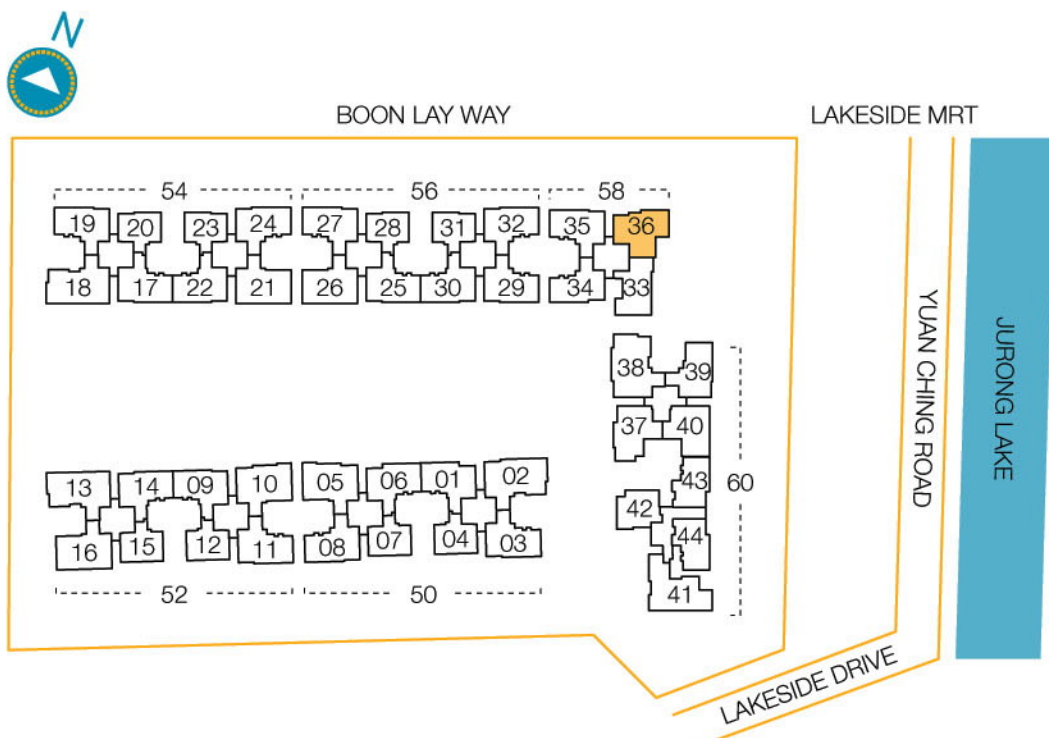
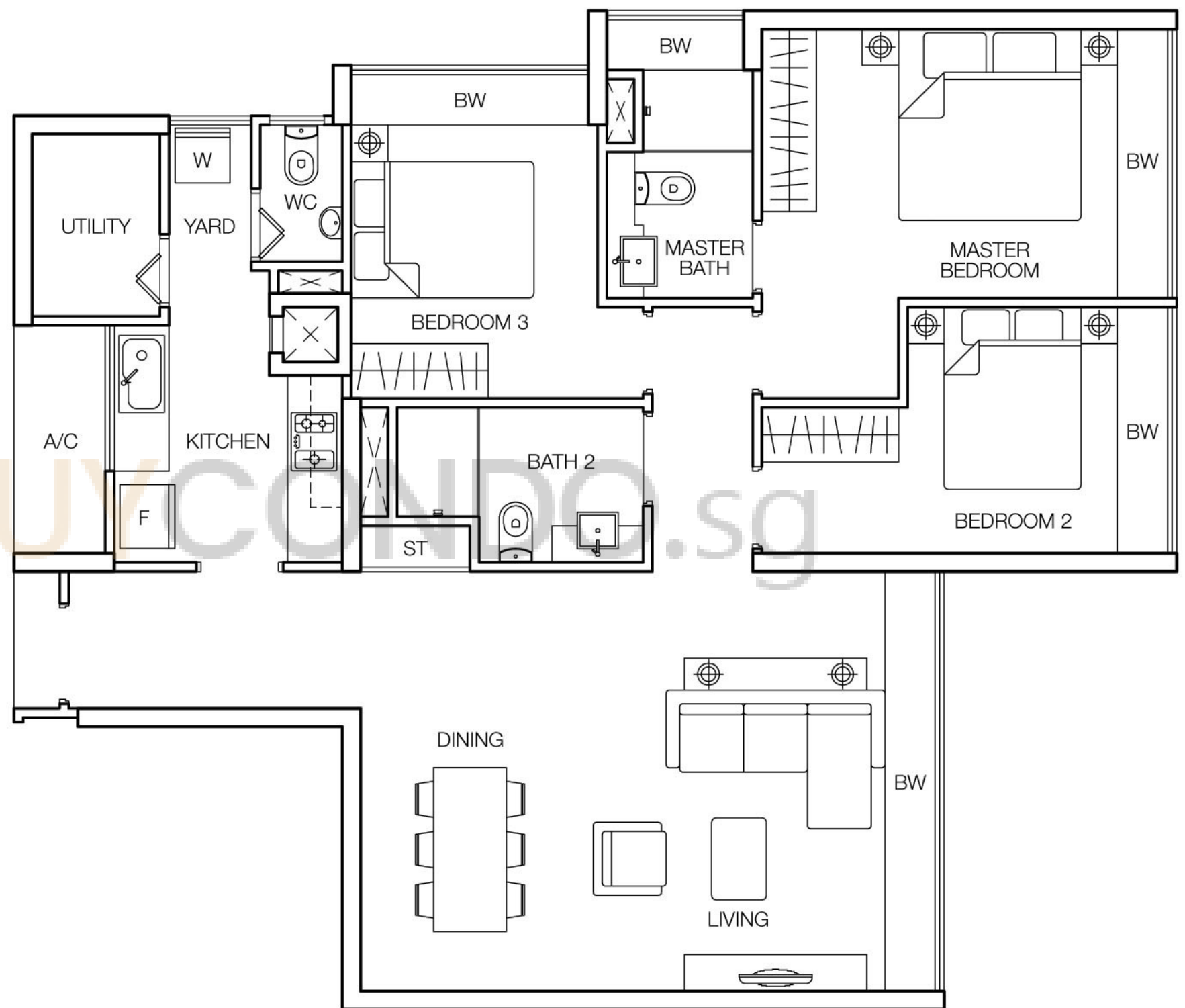
Area includes PES, A/C ledge, bay window, balcony, planter, roof terrace and void. Some units are mirror images of the apartment plans shown in the brochure. Please refer to the key plans for orientation. All plans are not drawn to scale and are subject to changes as may be approved by the relevant authorities. All floor areas are approximate measurements only and are subject to government resurvey.

3 BEDROOM

# TYPE D5

106 sq.m. / 1,141 sq.ft.

#04-36 to #16-36



Area includes PES, A/C ledge, bay window, balcony, planter, roof terrace and void. Some units are mirror images of the apartment plans shown in the brochure. Please refer to the key plans for orientation. All plans are not drawn to scale and are subject to changes as may be approved by the relevant authorities. All floor areas are approximate measurements only and are subject to government resurvey.



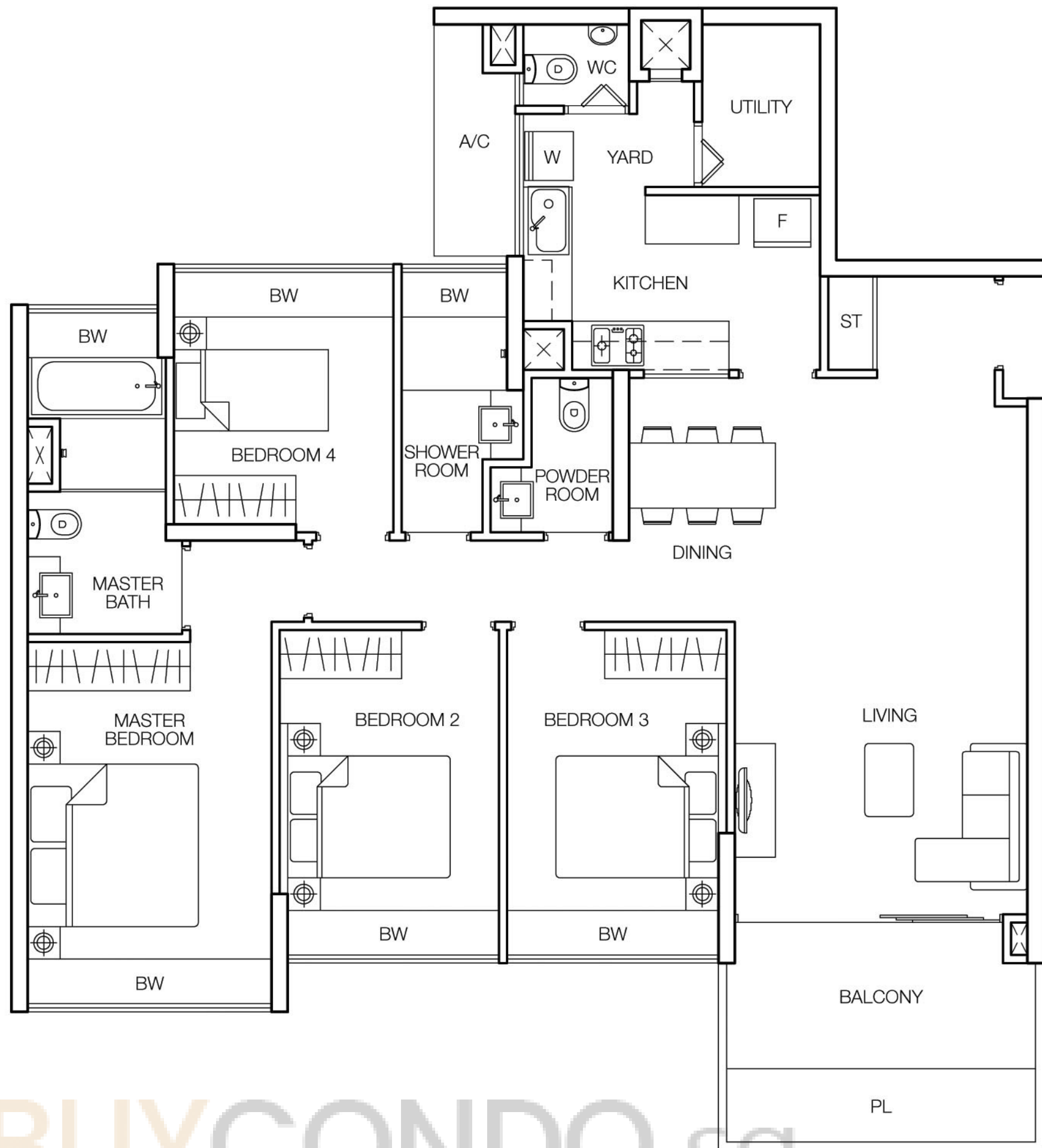
4 BEDROOM

# TYPE E1

130 sq.m. / 1,399 sq.ft.

#02-05 to #16-05, #02-10 to #16-10

#02-21 to #16-21, #02-26 to #16-26

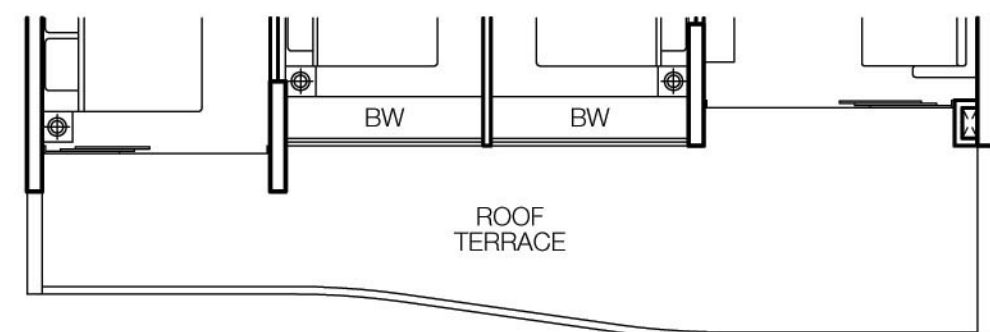


## TYPE E1t

147 sq.m. / 1,582 sq.ft.

#17-05, #17-10, #17-16, #17-21

#17-26

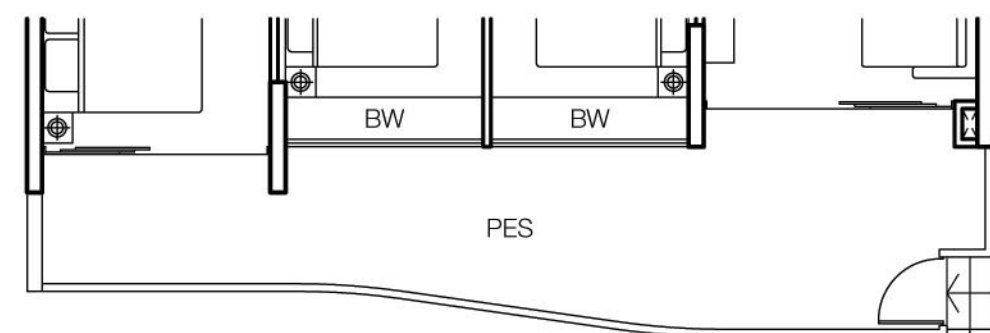


## TYPE E1p

146 sq.m. / 1,572 sq.ft.

#01-05, #01-10, #01-16, #01-21

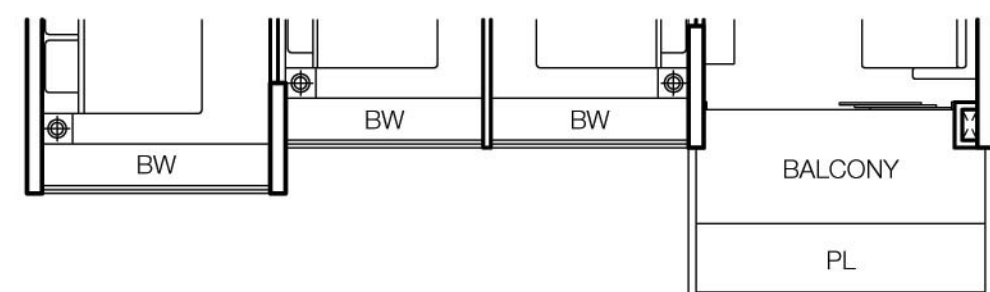
#01-26



## TYPE E1a

129 sq.m. / 1,389 sq.ft.

#02-16 to #16-16



Area includes PES, A/C ledge, bay window, balcony, planter, roof terrace and void. Some units are mirror images of the apartment plans shown in the brochure. Please refer to the key plans for orientation. All plans are not drawn to scale and are subject to changes as may be approved by the relevant authorities. All floor areas are approximate measurements only and are subject to government resurvey.

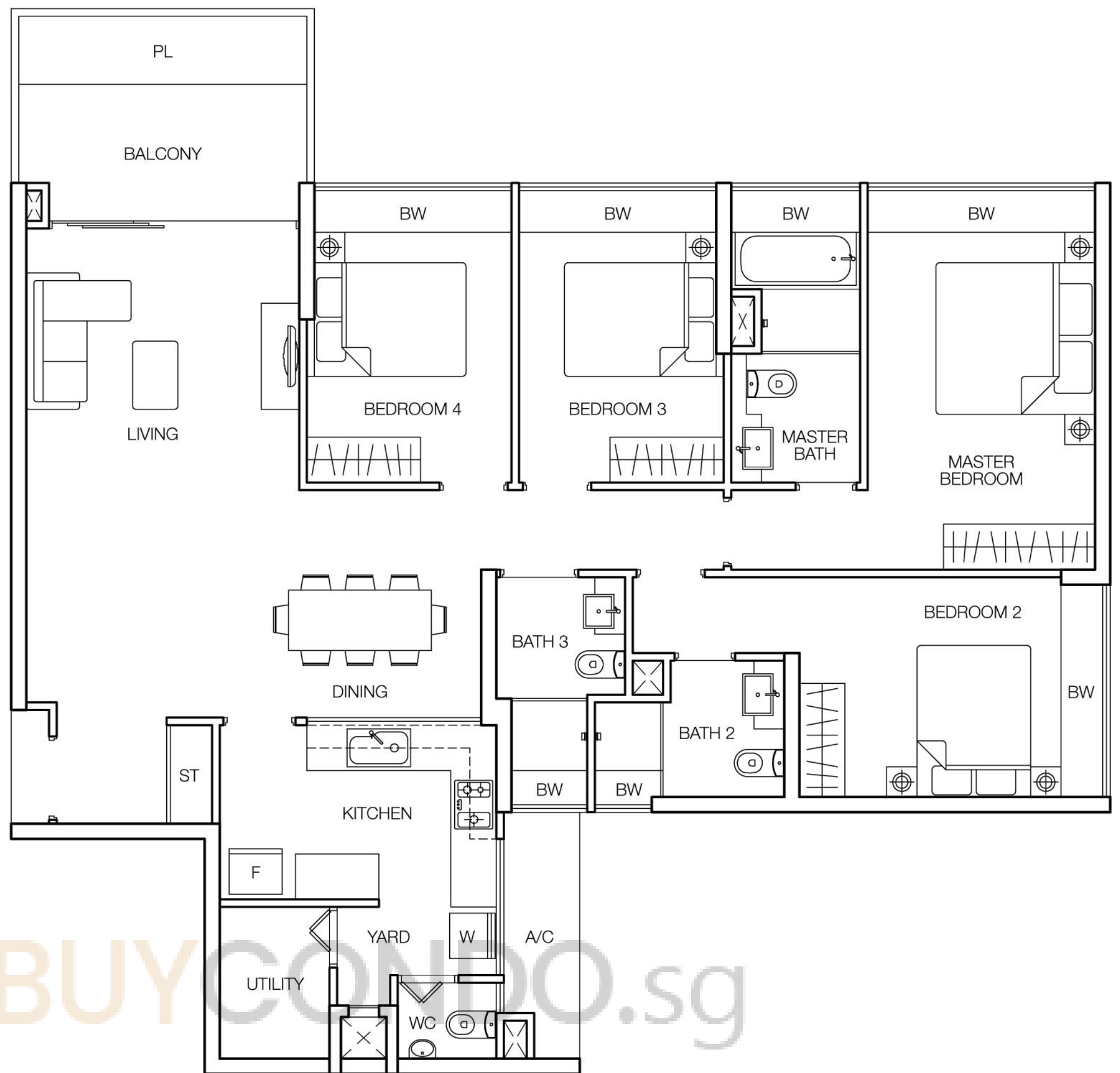
4 BEDROOM

# TYPE E2

142 sq.m. / 1,528 sq.ft.

#02-02 to #16-02, #02-13 to #16-13

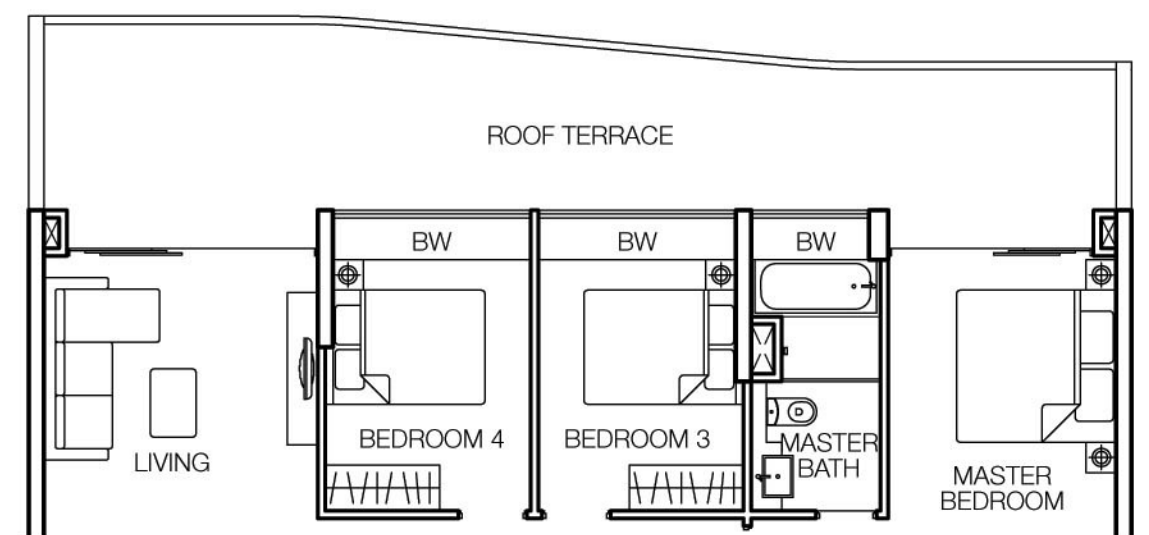
#02-18 to #16-18



## TYPE E2t

165 sq.m. / 1,776 sq.ft.

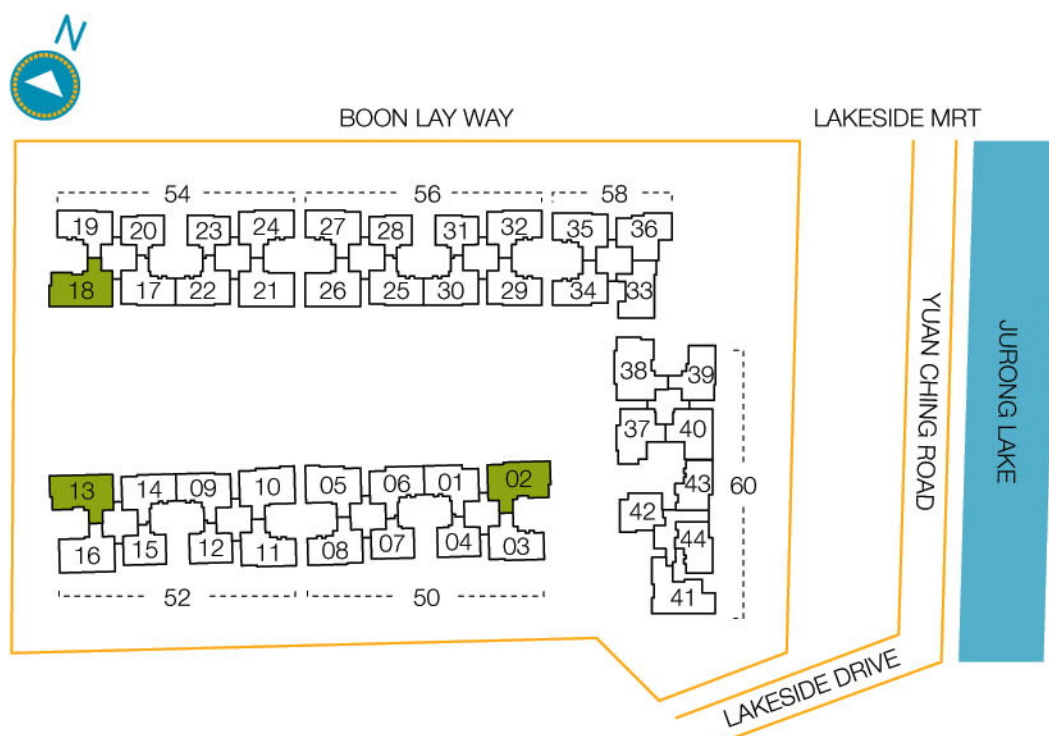
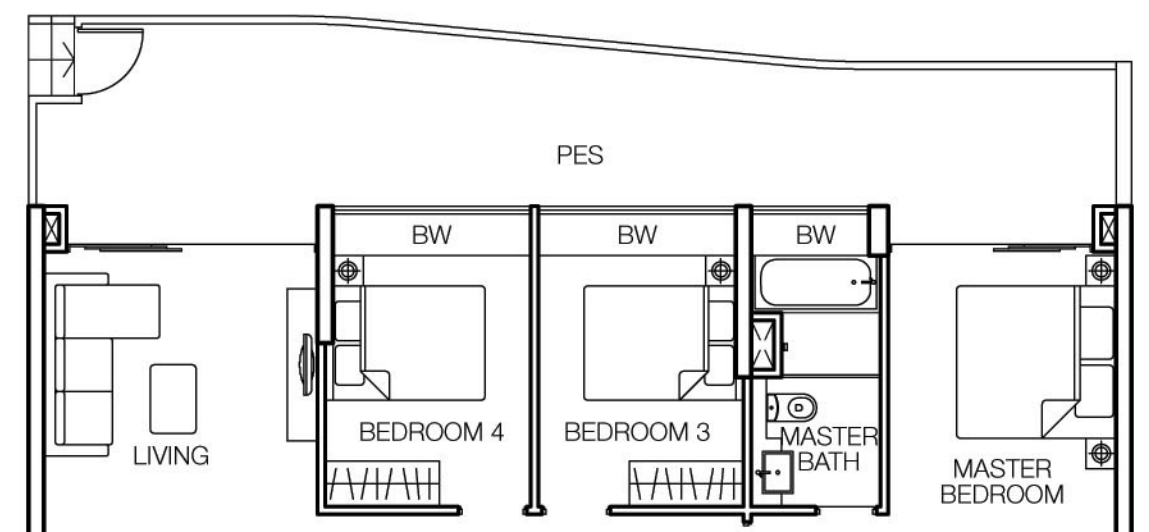
#17-02, #17-13, #17-18



## TYPE E2p

164 sq.m. / 1,765 sq.ft.

#01-02, #01-13, #01-18



Area includes PES, A/C ledge, bay window, balcony, planter, roof terrace and void. Some units are mirror images of the apartment plans shown in the brochure. Please refer to the key plans for orientation. All plans are not drawn to scale and are subject to changes as may be approved by the relevant authorities. All floor areas are approximate measurements only and are subject to government resurvey.

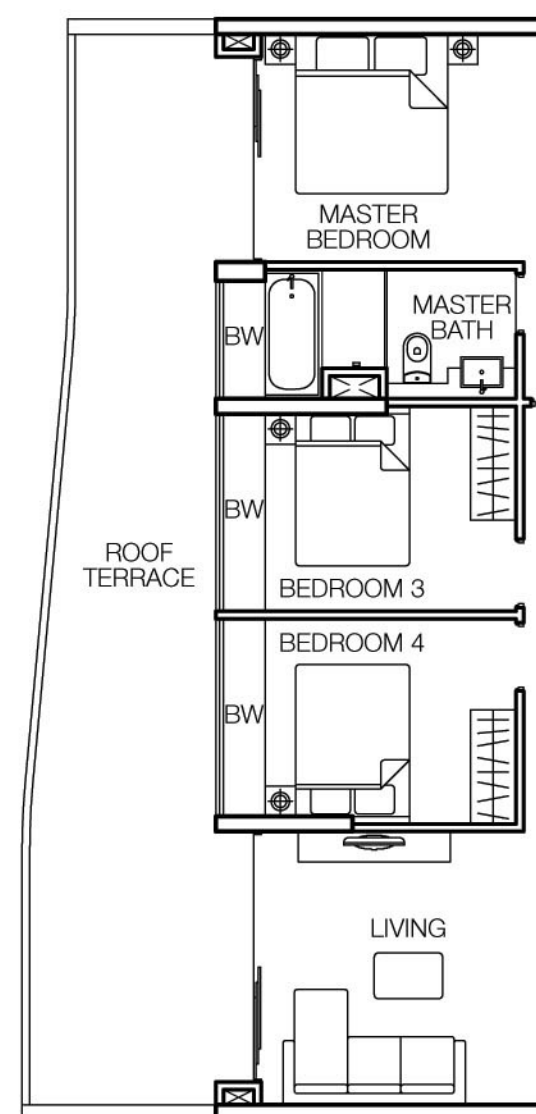
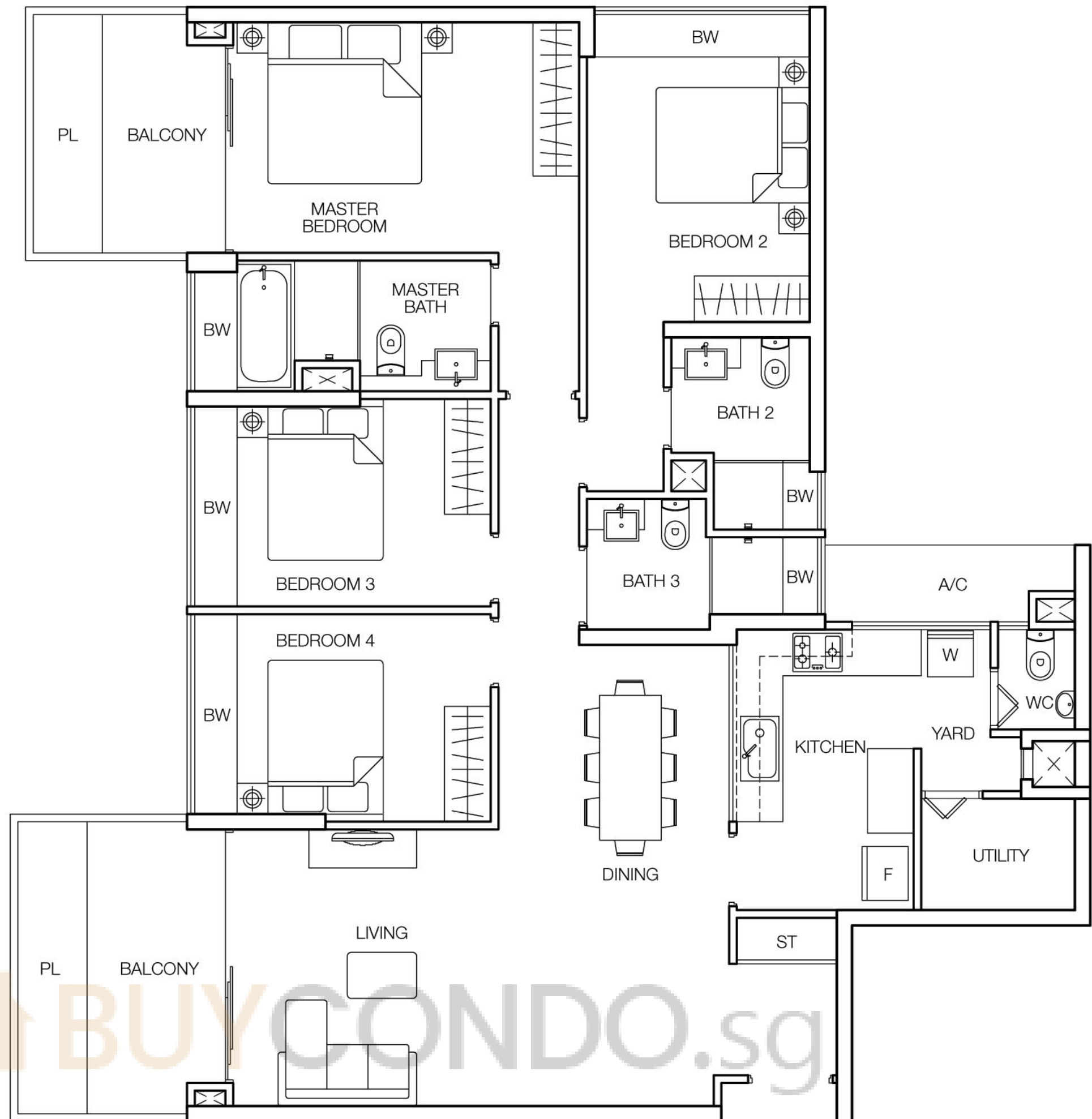


4 BEDROOM

# TYPE E2a

148 sq.m. / 1,593 sq.ft.

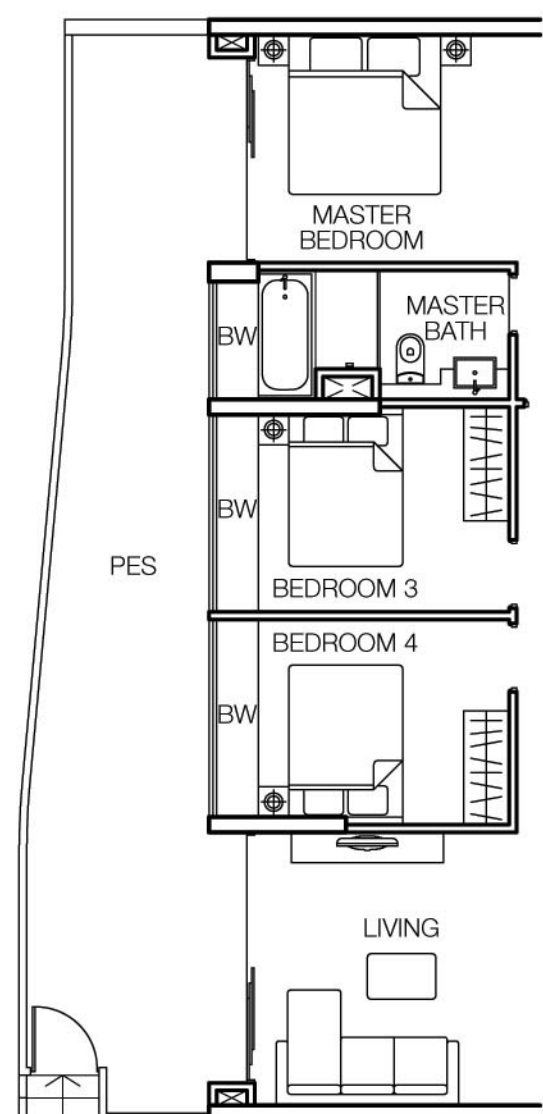
#02-38 to #16-38



## TYPE E2at

165 sq.m. / 1,776 sq.ft.

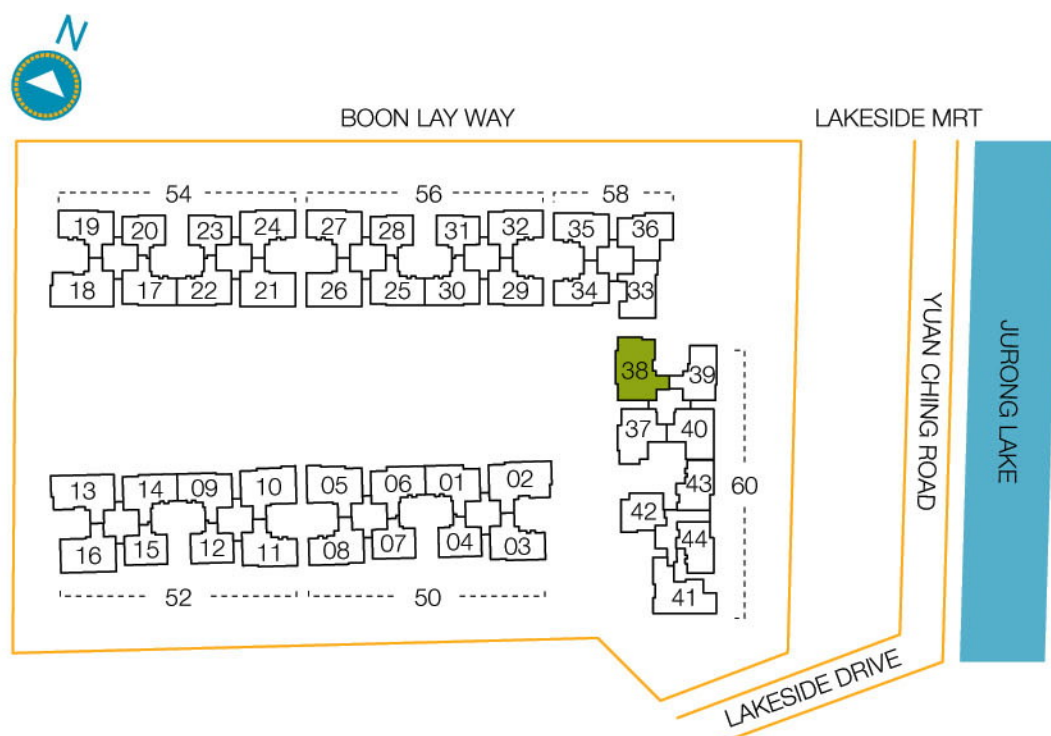
#17-38



## TYPE E2ap

164 sq.m. / 1,765 sq.ft.

#01-38



Area includes PES, A/C ledge, bay window, balcony, planter, roof terrace and void. Some units are mirror images of the apartment plans shown in the brochure. Please refer to the key plans for orientation. All plans are not drawn to scale and are subject to changes as may be approved by the relevant authorities. All floor areas are approximate measurements only and are subject to government resurvey.

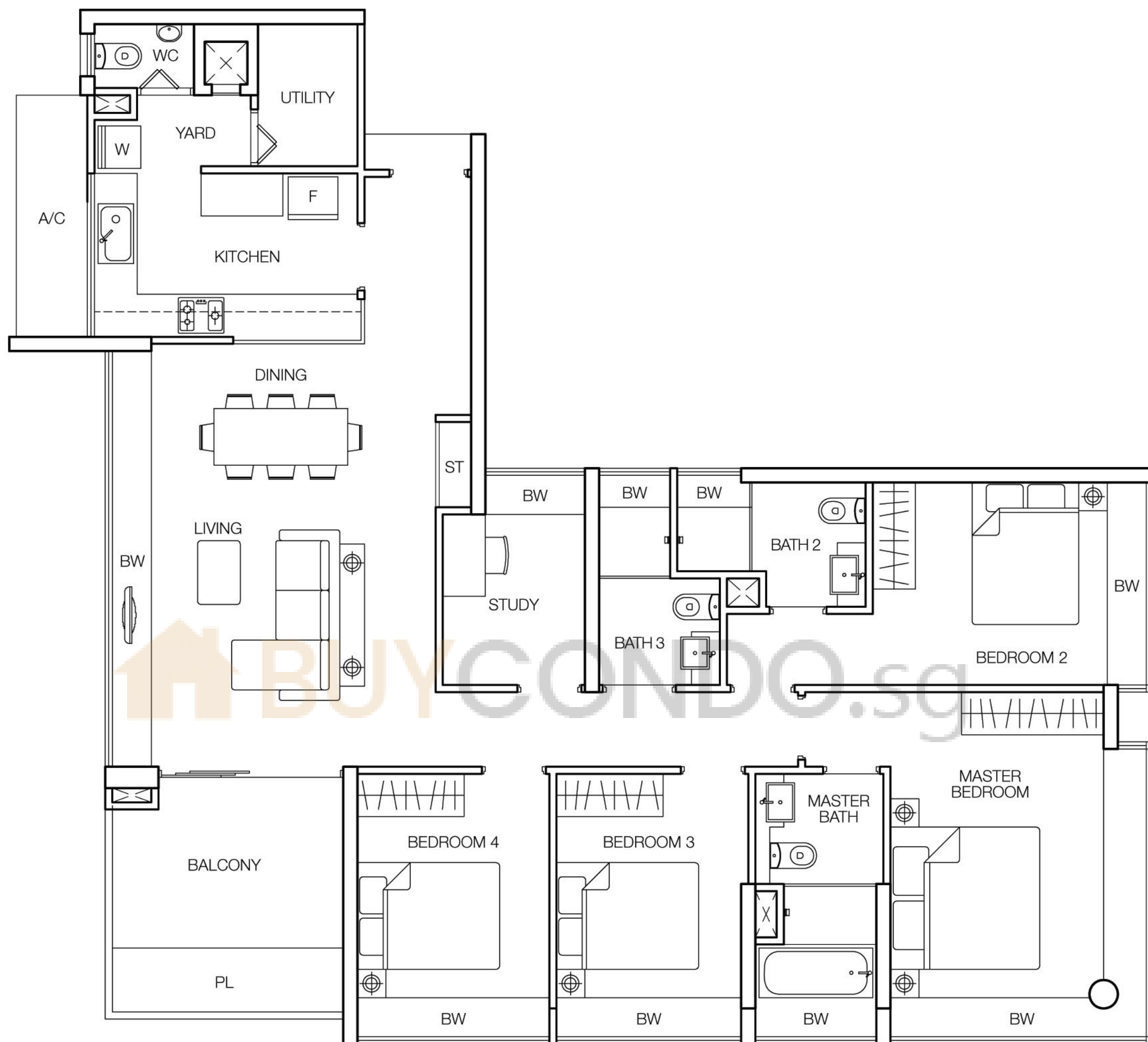


4 BEDROOM + STUDY

# TYPE F1

149 sq.m. / 1,604 sq.ft.

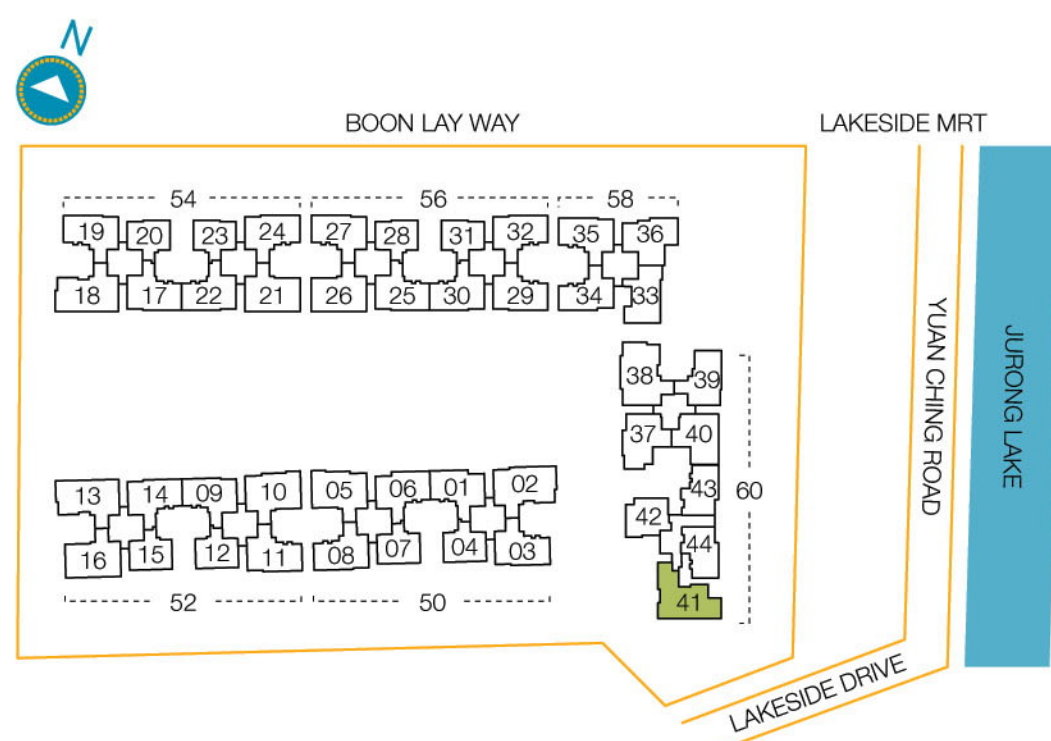
#02-41 to #16-41



## TYPE F1t

149 sq.m. / 1,604 sq.ft.

#17-41



Area includes PES, A/C ledge, bay window, balcony, planter, roof terrace and void. Some units are mirror images of the apartment plans shown in the brochure. Please refer to the key plans for orientation. All plans are not drawn to scale and are subject to changes as may be approved by the relevant authorities. All floor areas are approximate measurements only and are subject to government resurvey.