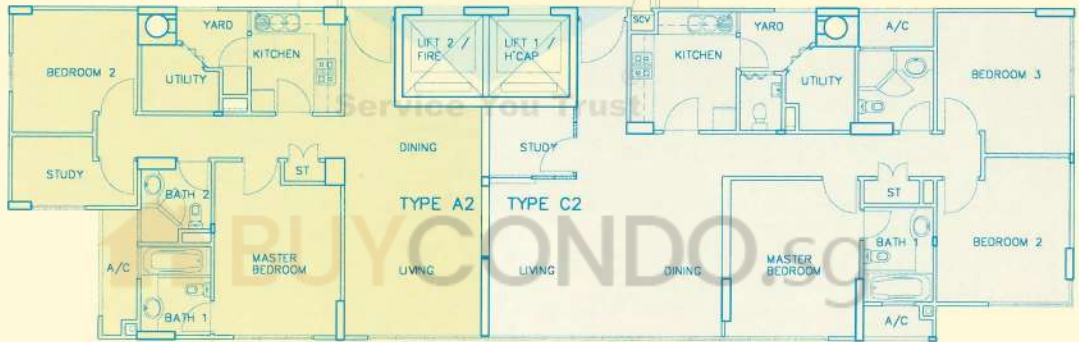
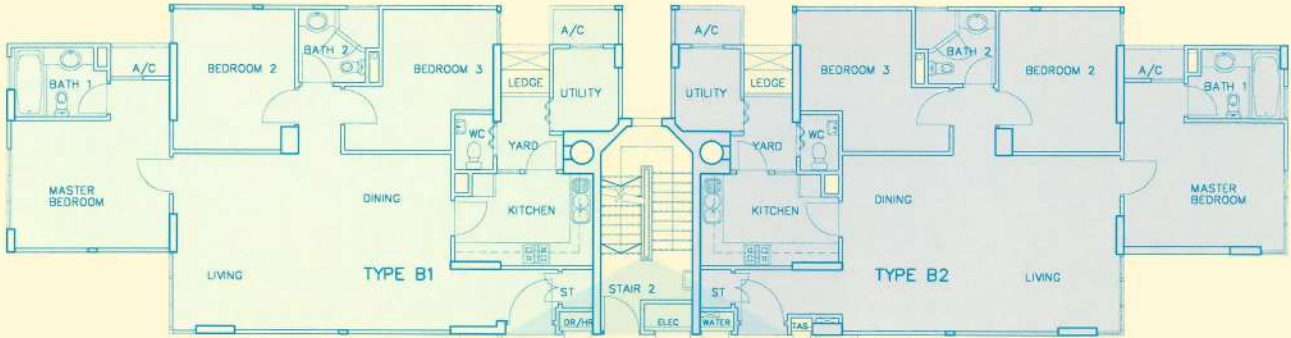


#12-06 to #14-06

#12-07 to #14-07

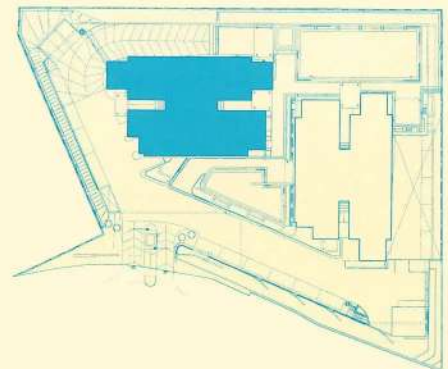


#12-05 to #14-05

#12-08 to #14-08

Tower 2

Storey Plan (12th - 14th)



#02-06 to #11-06

#02-07 to #11-07



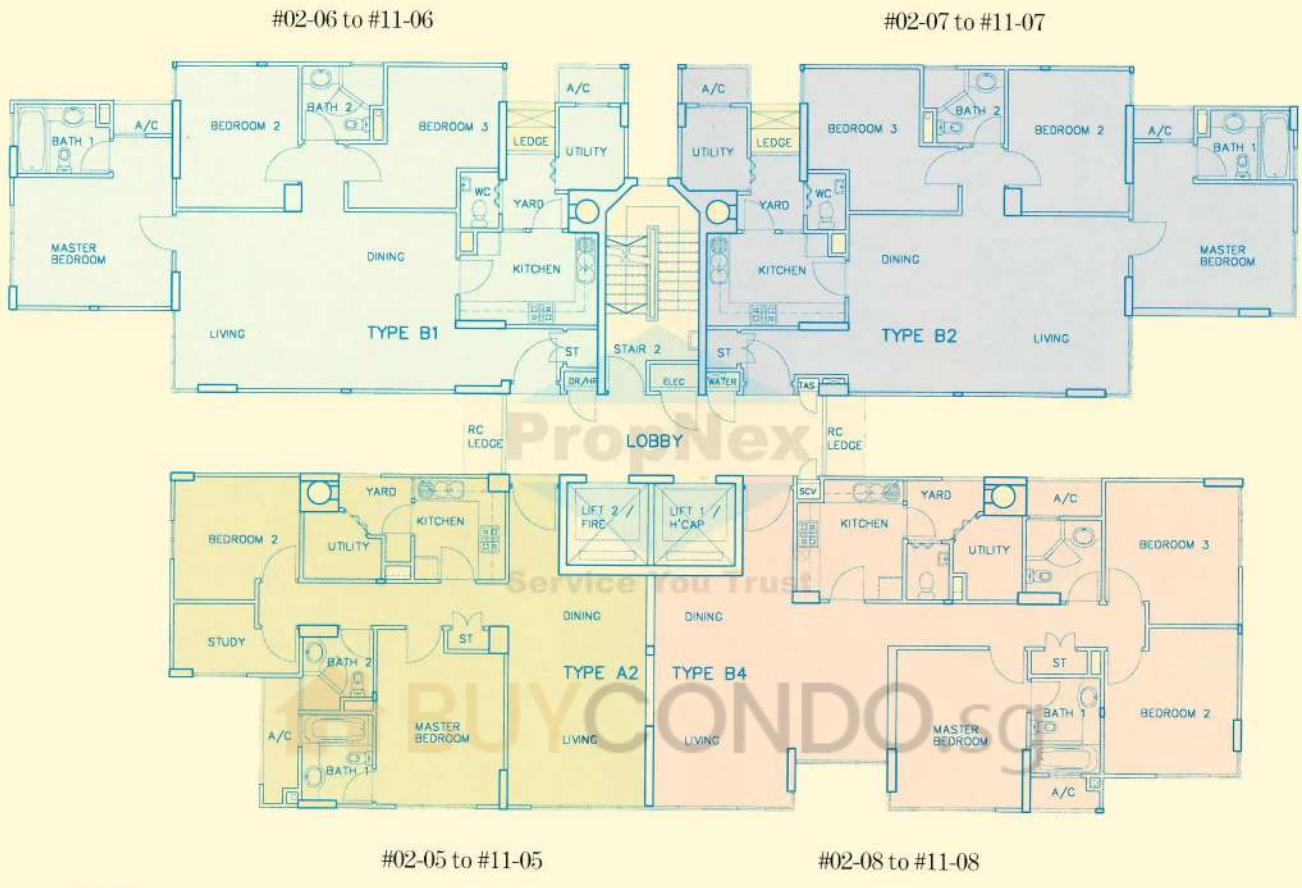
#02-05 to #11-05

#02-08 to #11-08

Tower 2

Interior Layout (2nd - 11th)

Artist's Impression and serves only to give an approximate idea of the furniture layout in the units.

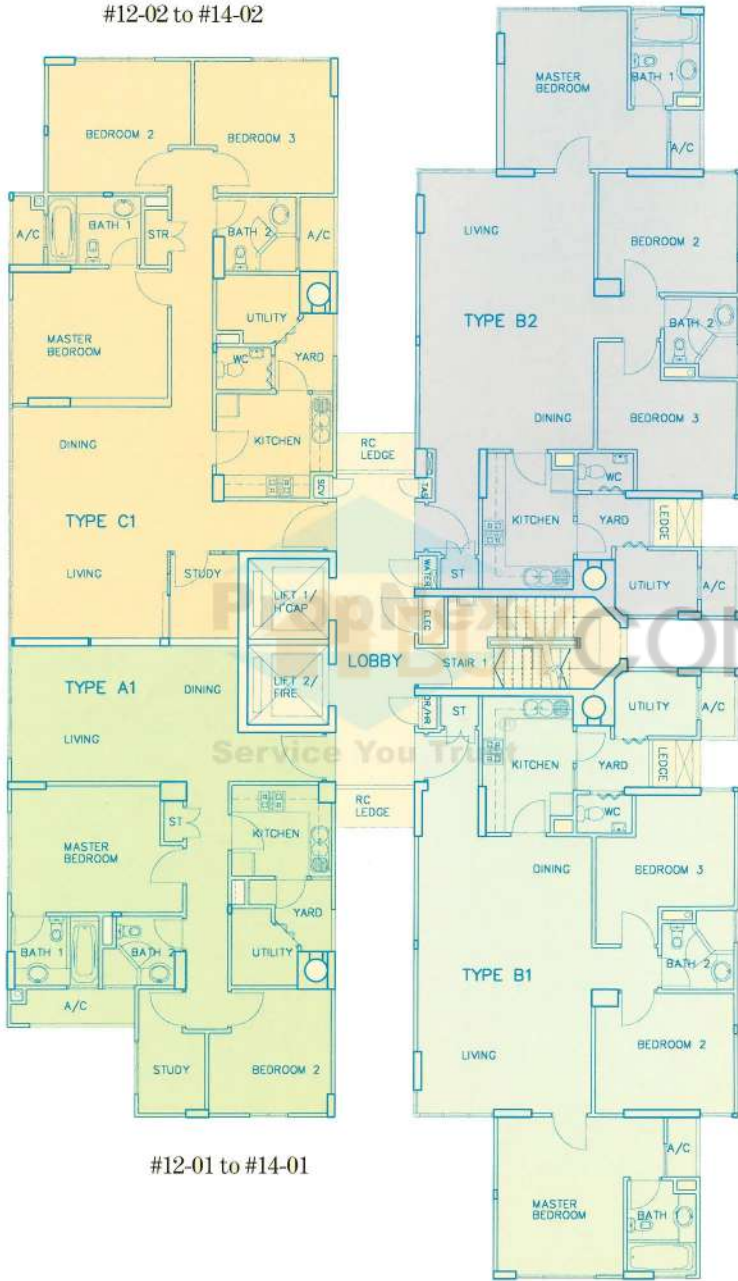


Tower 2
 Storey Plan (2nd - 11th)

The above plan is subject to changes as may be approved by the relevant authorities.

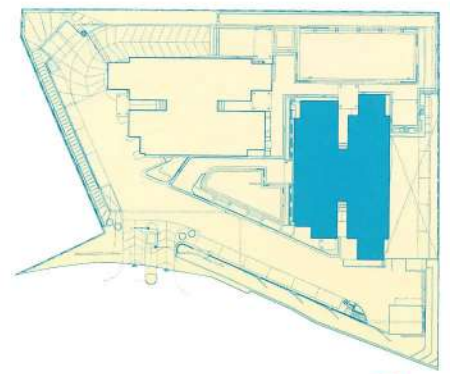
#12-03 to #14-03

#12-02 to #14-02



Tower 1

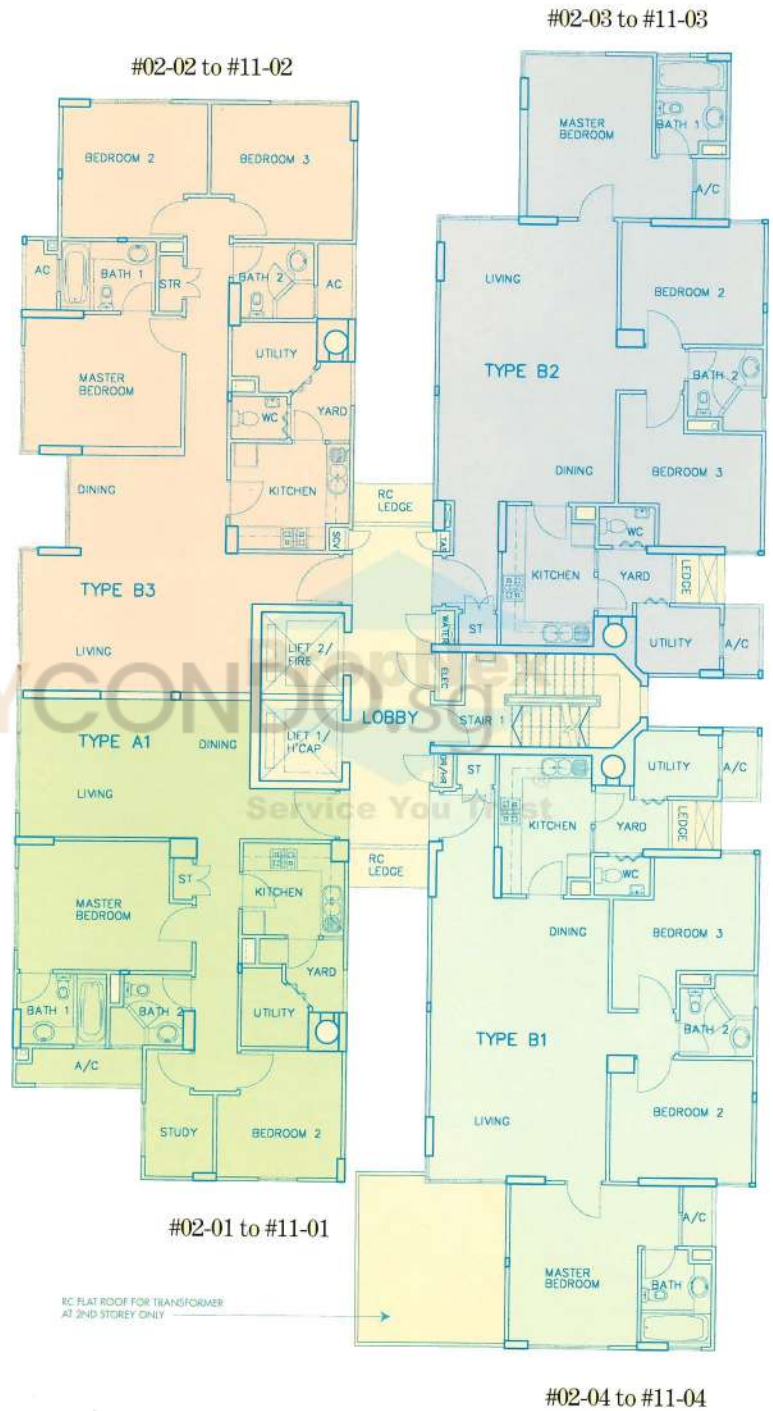
Storey Plan (12th - 14th)



#12-04 to #14-04

Tower 1

Storey Plan (2nd - 11th)



The above plan is subject to changes as may be approved by the relevant authorities.