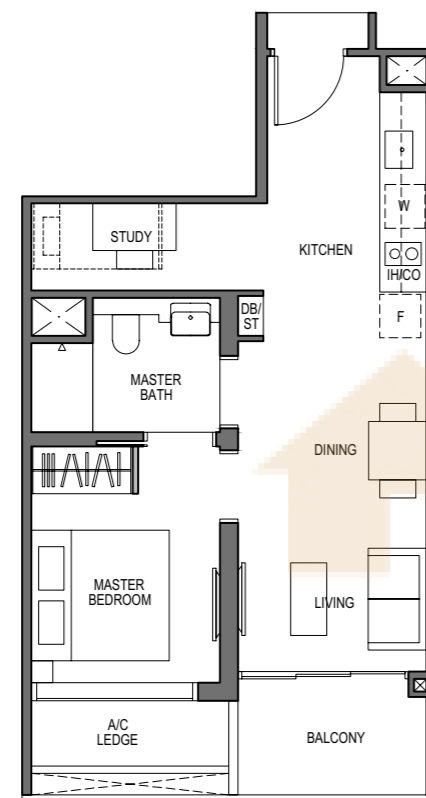


1 - BEDROOM + STUDY

TYPE A1
51 sq m / 549 sq ft

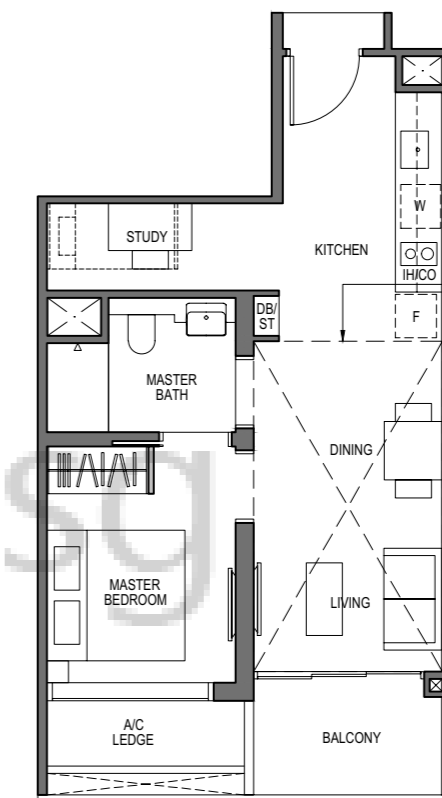
BLOCK 9
UNIT
#03-08 TO #26-08



1 - BEDROOM + STUDY

TYPE A1-PH
64 sq m / 689 sq ft
[inclusive of 13 sq m / 140 sq ft of void area (high ceiling)]

BLOCK 9
UNIT
#27-08



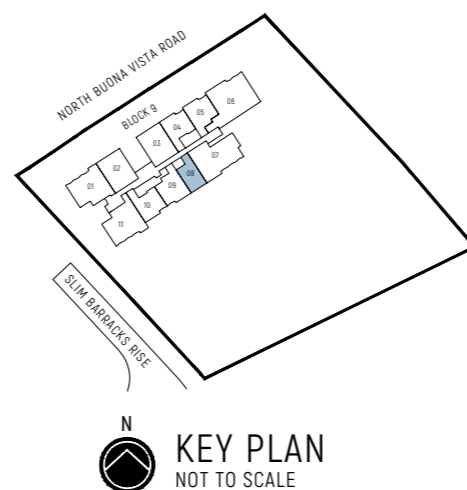
Dotted Line denotes
Strata Void Area for Type A1-PH
which is part of the Strata Void



LEGEND (where applicable):

- Non-Structural Wall F - Fridge W - Washer HS - Household Shelter
- Structural Wall (no hacking allowed) IH - Induction Hob GH - Gas Hob CO - Convection Oven
- Services Void Space (excluded from strata area) ST - Storage DB - Distribution Board WC - Water Closet

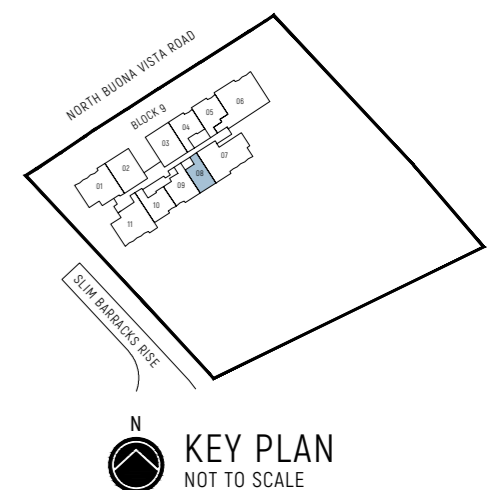
* - Mirror Image



LEGEND (where applicable):

- Non-Structural Wall F - Fridge W - Washer HS - Household Shelter
- Structural Wall (no hacking allowed) IH - Induction Hob GH - Gas Hob CO - Convection Oven
- Services Void Space (excluded from strata area) ST - Storage DB - Distribution Board WC - Water Closet

* - Mirror Image



The balcony shall not be enclosed. Only approved balcony screens are to be used. For illustration of the approved balcony screen, please refer to diagram annexed hereto as "Annexure A". All plans are subjected to amendments as may be approved by the relevant authorities. Floor areas are approximate measurements and are subjected to final survey. All RC Ledge (Reinforced Concrete Ledge) are excluded from strata area. BP Approval No. A1720-00020-2021-BP02 dated 17/03/2023

The balcony shall not be enclosed. Only approved balcony screens are to be used. For illustration of the approved balcony screen, please refer to diagram annexed hereto as "Annexure A". All plans are subjected to amendments as may be approved by the relevant authorities. Floor areas are approximate measurements and are subjected to final survey. All RC Ledge (Reinforced Concrete Ledge) are excluded from strata area. BP Approval No. A1720-00020-2021-BP02 dated 17/03/2023

2 - BEDROOM

TYPE B1

63 sq m / 678 sq ft

BLOCK 9

UNIT

#03-04 TO #26-04

#03-10* TO #26-10*

2 - BEDROOM

TYPE B1-PH

77 sq m / 829 sq ft

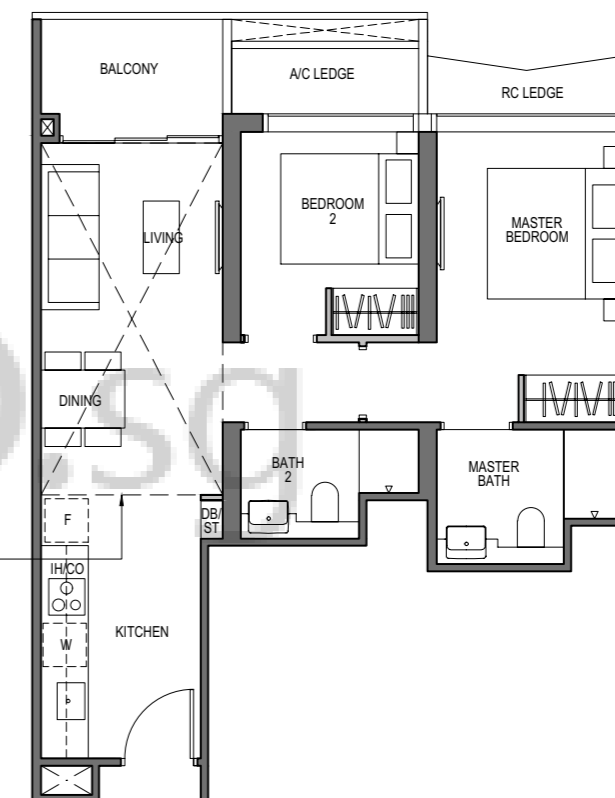
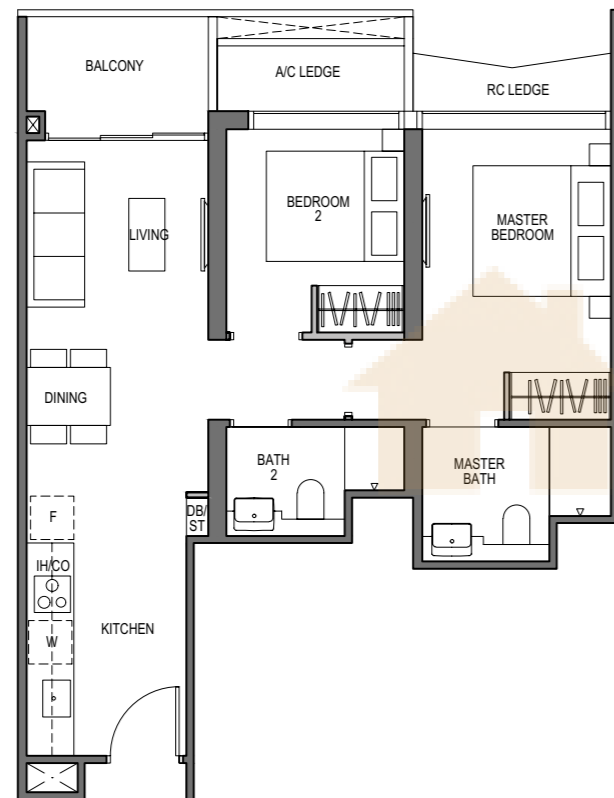
[inclusive of 14 sq m / 151 sq ft of void area (high ceiling)]

BLOCK 9

UNIT

#27-04

#27-10*



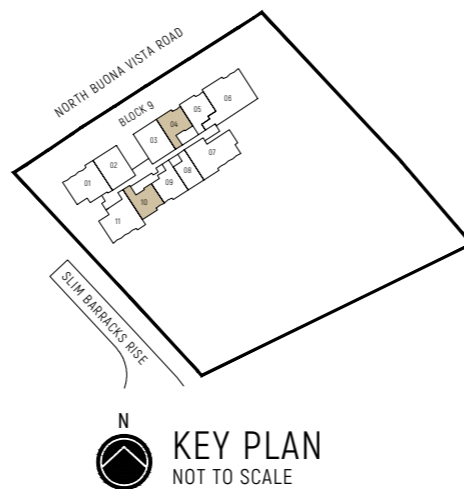
Dotted Line denotes Strata Void Area for Type B1-PH which is part of the Strata Void

0 1 3 5M

LEGEND (where applicable):

- Non-Structural Wall
- Structural Wall (no hacking allowed)
- Services Void Space (excluded from strata area)
- F - Fridge
- IH - Induction Hob
- ST - Storage
- W - Washer
- GH - Gas Hob
- DB - Distribution Board
- HS - Household Shelter
- CO - Convection Oven
- WC - Water Closet

* - Mirror Image

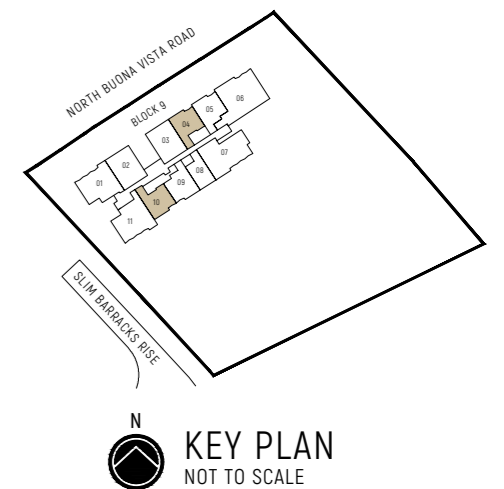


0 1 3 5M

LEGEND (where applicable):

- Non-Structural Wall
- Structural Wall (no hacking allowed)
- Services Void Space (excluded from strata area)
- F - Fridge
- IH - Induction Hob
- ST - Storage
- W - Washer
- GH - Gas Hob
- DB - Distribution Board
- HS - Household Shelter
- CO - Convection Oven
- WC - Water Closet

* - Mirror Image



The balcony shall not be enclosed. Only approved balcony screens are to be used. For illustration of the approved balcony screen, please refer to diagram annexed hereto as "Annexure A". All plans are subjected to amendments as may be approved by the relevant authorities. Floor areas are approximate measurements and are subjected to final survey.

All RC Ledge (Reinforced Concrete Ledge) are excluded from strata area.

BP Approval No. A1720-00020-2021-BP02 dated 17/03/2023

The balcony shall not be enclosed. Only approved balcony screens are to be used. For illustration of the approved balcony screen, please refer to diagram annexed hereto as "Annexure A". All plans are subjected to amendments as may be approved by the relevant authorities. Floor areas are approximate measurements and are subjected to final survey.

All RC Ledge (Reinforced Concrete Ledge) are excluded from strata area.

BP Approval No. A1720-00020-2021-BP02 dated 17/03/2023

2 - BEDROOM + STUDY

TYPE B2

67 sq m / 721 sq ft

BLOCK 9

UNIT

#03-05 TO #26-05

#03-09 TO #26-09

2 - BEDROOM + STUDY

TYPE B2-PH

81 sq m / 872 sq ft

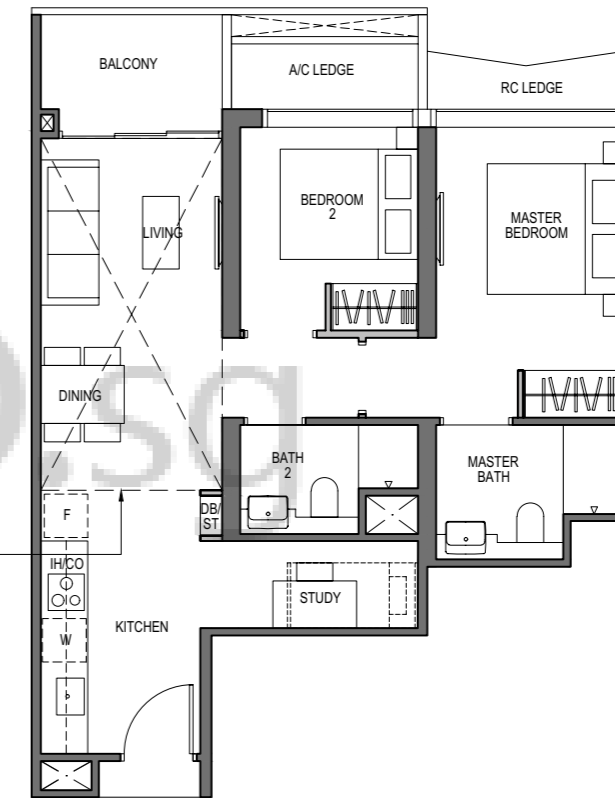
[inclusive of 14 sq m / 151 sq ft of void area (high ceiling)]

BLOCK 9

UNIT

#27-05

#27-09



Dotted Line denotes Strata Void Area for Type B2-PH which is part of the Strata Void

0 1 3 5M

LEGEND (where applicable):

- Non-Structural Wall
- Structural Wall (no hacking allowed)
- ⊠ Services Void Space (excluded from strata area)
- F - Fridge
- IH - Induction Hob
- GH - Gas Hob
- W - Washer
- HS - Household Shelter
- CO - Convection Oven
- ST - Storage
- DB - Distribution Board
- WC - Water Closet

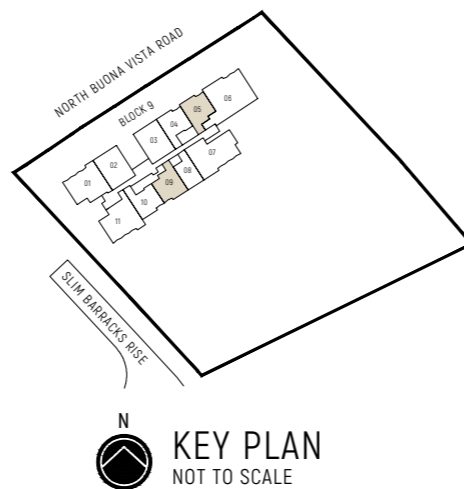
* - Mirror Image

The balcony shall not be enclosed. Only approved balcony screens are to be used. For illustration of the approved balcony screen, please refer to diagram annexed hereto as "Annexure A".

All plans are subjected to amendments as may be approved by the relevant authorities. Floor areas are approximate measurements and are subjected to final survey.

All RC Ledge (Reinforced Concrete Ledge) are excluded from strata area.

BP Approval No. A1720-00020-2021-BP02 dated 17/03/2023



KEY PLAN NOT TO SCALE

0 1 3 5M

LEGEND (where applicable):

- Non-Structural Wall
- Structural Wall (no hacking allowed)
- ⊠ Services Void Space (excluded from strata area)
- F - Fridge
- IH - Induction Hob
- GH - Gas Hob
- W - Washer
- HS - Household Shelter
- CO - Convection Oven
- ST - Storage
- DB - Distribution Board
- WC - Water Closet

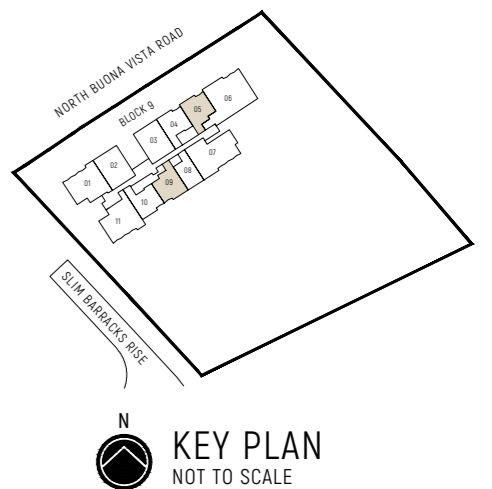
* - Mirror Image

The balcony shall not be enclosed. Only approved balcony screens are to be used. For illustration of the approved balcony screen, please refer to diagram annexed hereto as "Annexure A".

All plans are subjected to amendments as may be approved by the relevant authorities. Floor areas are approximate measurements and are subjected to final survey.

All RC Ledge (Reinforced Concrete Ledge) are excluded from strata area.

BP Approval No. A1720-00020-2021-BP02 dated 17/03/2023



KEY PLAN NOT TO SCALE

3 - BEDROOM

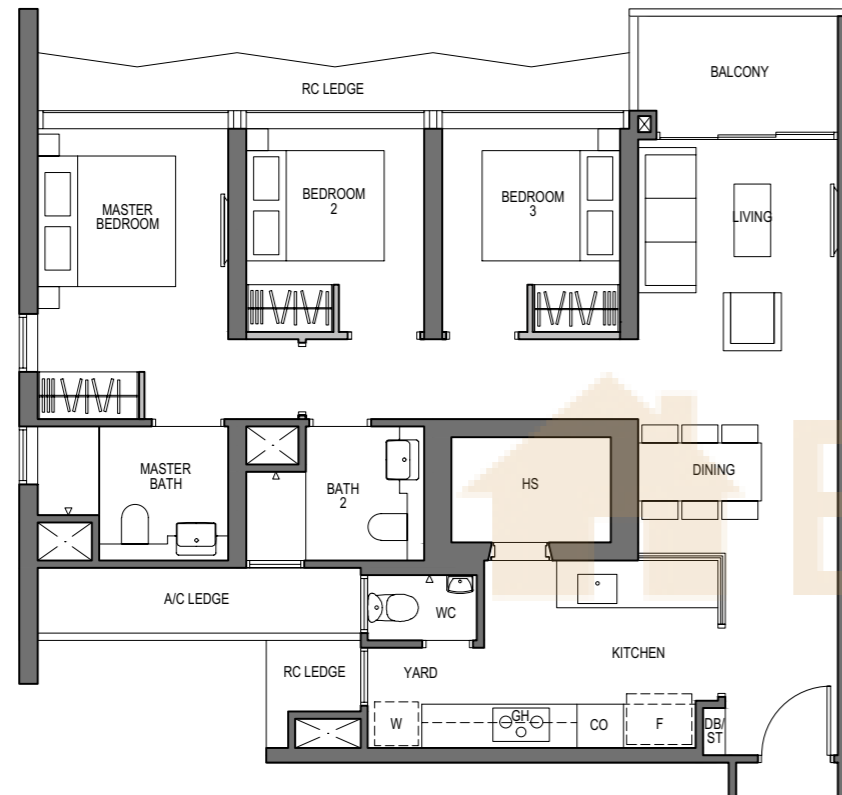
TYPE C1

97 sq m / 1044 sq ft

BLOCK 9

UNIT

#03-01 TO #26-01



3 - BEDROOM

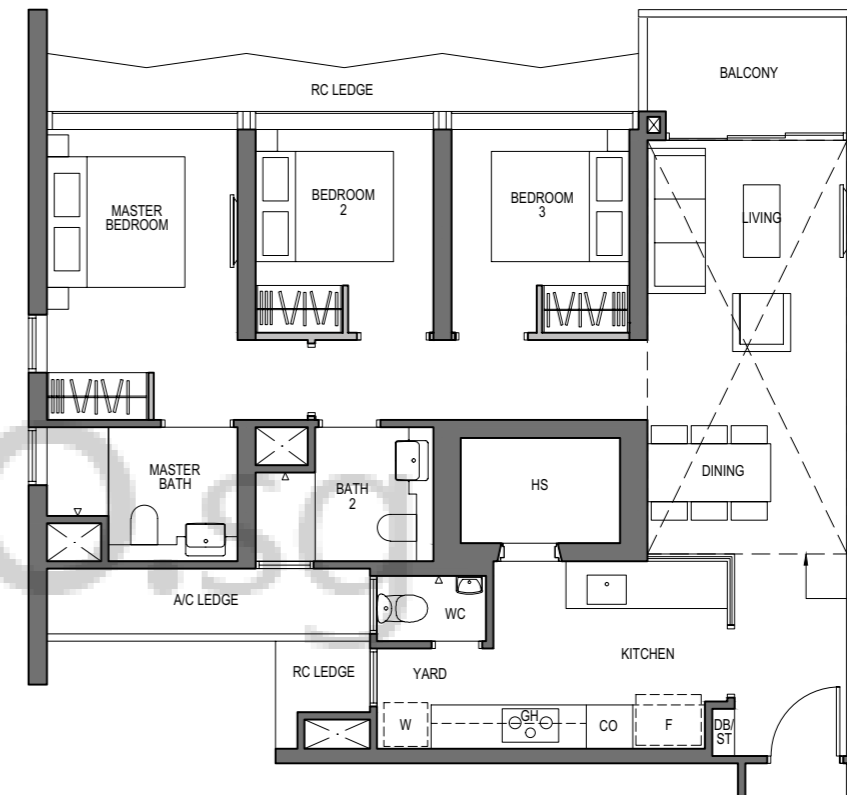
TYPE C1-PH

114 sq m / 1227 sq ft
[inclusive of 17 sq m / 183 sq ft of void area (high ceiling)]

BLOCK 9

UNIT

#27-01



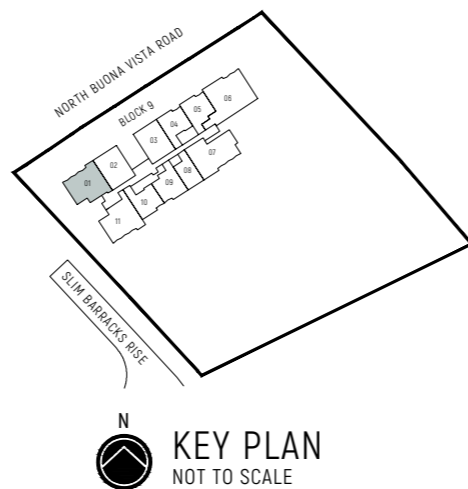
Dotted Line denotes Strata Void Area for Type C1-PH which is part of the Strata Void



LEGEND (where applicable):

- Non-Structural Wall
- Structural Wall (no hacking allowed)
- Services Void Space (excluded from strata area)
- F - Fridge
- IH - Induction Hob
- GH - Gas Hob
- CO - Convection Oven
- W - Washer
- HS - Household Shelter
- WC - Water Closet
- ST - Storage
- DB - Distribution Board

* - Mirror Image



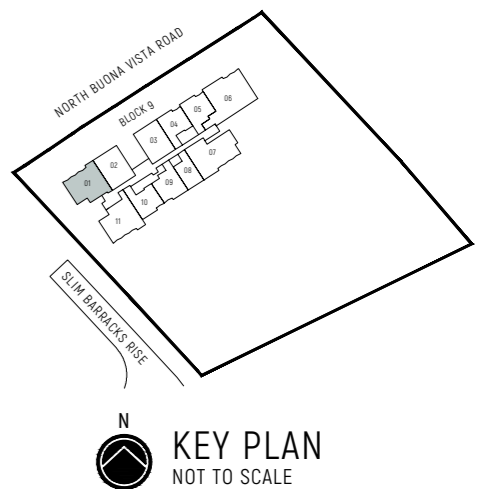
The balcony shall not be enclosed. Only approved balcony screens are to be used. For illustration of the approved balcony screen, please refer to diagram annexed hereto as "Annexure A". All plans are subjected to amendments as may be approved by the relevant authorities. Floor areas are approximate measurements and are subjected to final survey. All RC Ledge (Reinforced Concrete Ledge) are excluded from strata area. BP Approval No. A1720-00020-2021-BP02 dated 17/03/2023



LEGEND (where applicable):

- Non-Structural Wall
- Structural Wall (no hacking allowed)
- Services Void Space (excluded from strata area)
- F - Fridge
- IH - Induction Hob
- GH - Gas Hob
- CO - Convection Oven
- W - Washer
- HS - Household Shelter
- WC - Water Closet
- ST - Storage
- DB - Distribution Board

* - Mirror Image

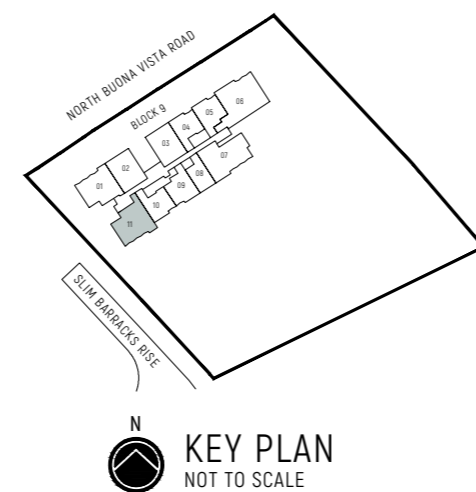
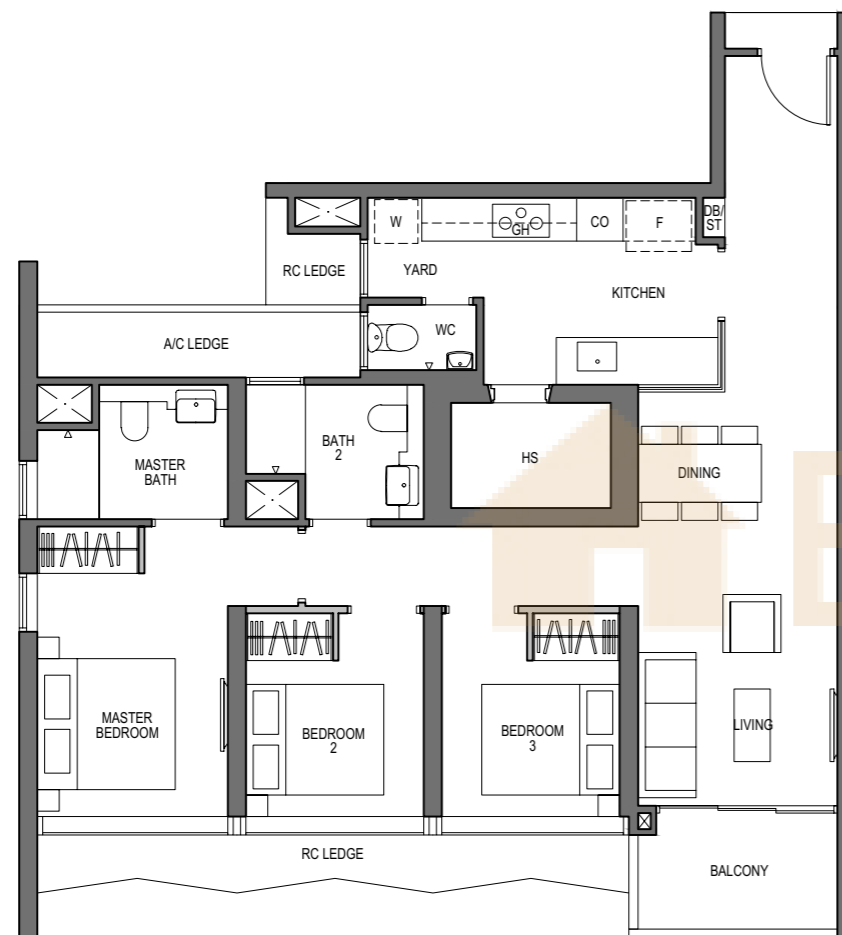


The balcony shall not be enclosed. Only approved balcony screens are to be used. For illustration of the approved balcony screen, please refer to diagram annexed hereto as "Annexure A". All plans are subjected to amendments as may be approved by the relevant authorities. Floor areas are approximate measurements and are subjected to final survey. All RC Ledge (Reinforced Concrete Ledge) are excluded from strata area. BP Approval No. A1720-00020-2021-BP02 dated 17/03/2023

3 - BEDROOM

TYPE C2
100 sq m / 1076 sq ft

BLOCK 9
UNIT
#03-11 TO #26-11



0 1 3 5M

LEGEND (where applicable):

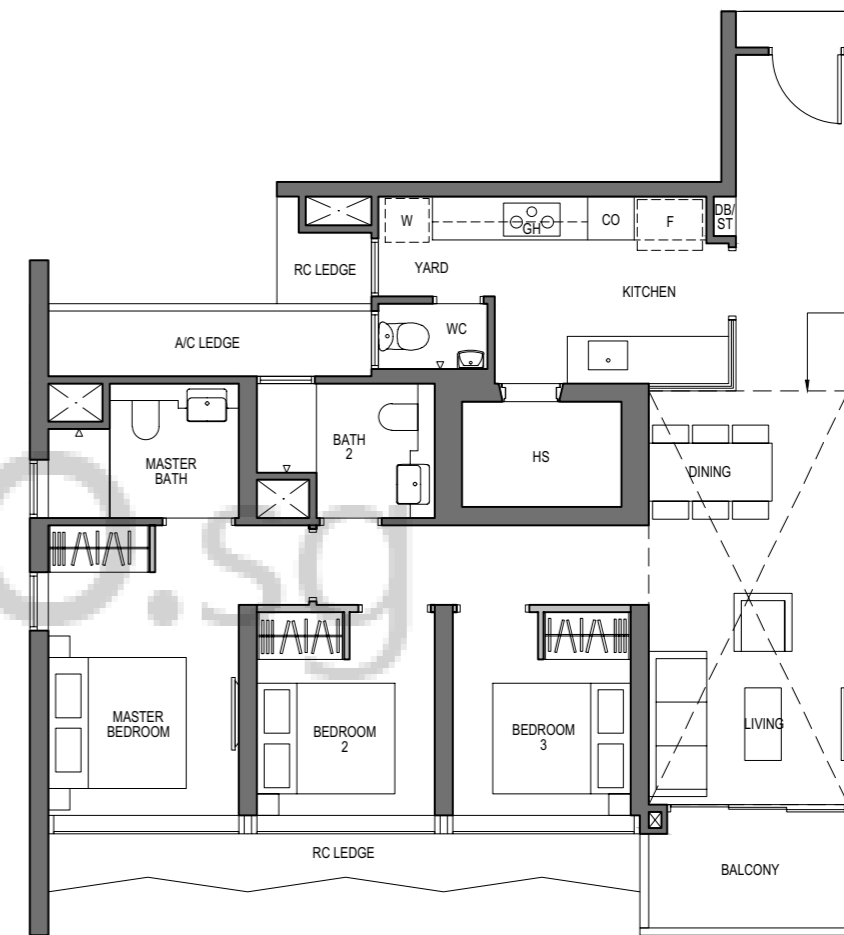
- Non-Structural Wall
- Structural Wall (no hacking allowed)
- ⊠ Services Void Space (excluded from strata area)
- * - Mirror Image
- F - Fridge
- IH - Induction Hob
- ST - Storage
- W - Washer
- GH - Gas Hob
- DB - Distribution Board
- WC - Water Closet
- HS - Household Shelter
- CO - Convection Oven

The balcony shall not be enclosed. Only approved balcony screens are to be used. For illustration of the approved balcony screen, please refer to diagram annexed hereto as "Annexure A". All plans are subjected to amendments as may be approved by the relevant authorities. Floor areas are approximate measurements and are subjected to final survey. All RC Ledge (Reinforced Concrete Ledge) are excluded from strata area. BP Approval No. A1720-00020-2021-BP02 dated 17/03/2023

3 - BEDROOM

TYPE C2-PH
117 sq m / 1259 sq ft
[inclusive of 17 sq m / 183 sq ft of void area (high ceiling)]

BLOCK 9
UNIT
#27-11

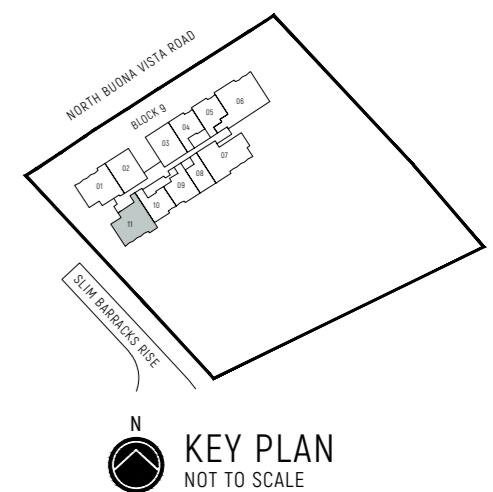


Dotted Line denotes Strata Void Area for Type C2-PH which is part of the Strata Void

0 1 3 5M

LEGEND (where applicable):

- Non-Structural Wall
- Structural Wall (no hacking allowed)
- ⊠ Services Void Space (excluded from strata area)
- * - Mirror Image
- F - Fridge
- IH - Induction Hob
- ST - Storage
- W - Washer
- GH - Gas Hob
- DB - Distribution Board
- WC - Water Closet
- HS - Household Shelter
- CO - Convection Oven



The balcony shall not be enclosed. Only approved balcony screens are to be used. For illustration of the approved balcony screen, please refer to diagram annexed hereto as "Annexure A". All plans are subjected to amendments as may be approved by the relevant authorities. Floor areas are approximate measurements and are subjected to final survey. All RC Ledge (Reinforced Concrete Ledge) are excluded from strata area. BP Approval No. A1720-00020-2021-BP02 dated 17/03/2023

3 - BEDROOM DUAL-KEY

TYPE C3

85 sq m / 915 sq ft

BLOCK 9

UNIT

#03-02 TO #26-02

#03-03* TO #26-03*



3 - BEDROOM DUAL-KEY

TYPE C3-PH

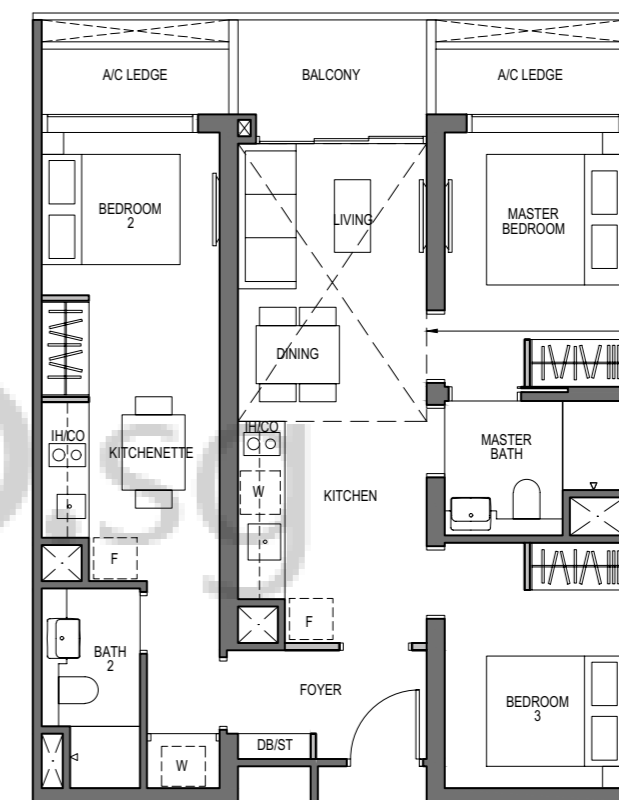
96 sq m / 1033 sq ft
[inclusive of 11 sq m / 118 sq ft of void area (high ceiling)]

BLOCK 9

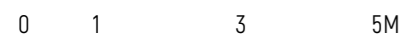
UNIT

#27-02

#27-03*



Dotted Line denotes Strata Void Area for Type C3-PH which is part of the Strata Void



LEGEND (where applicable):

- Non-Structural Wall
- Structural Wall (no hacking allowed)
- Services Void Space (excluded from strata area)
- F - Fridge
- IH - Induction Hob
- ST - Storage
- W - Washer
- GH - Gas Hob
- DB - Distribution Board
- HS - Household Shelter
- CO - Convection Oven
- WC - Water Closet

* - Mirror Image

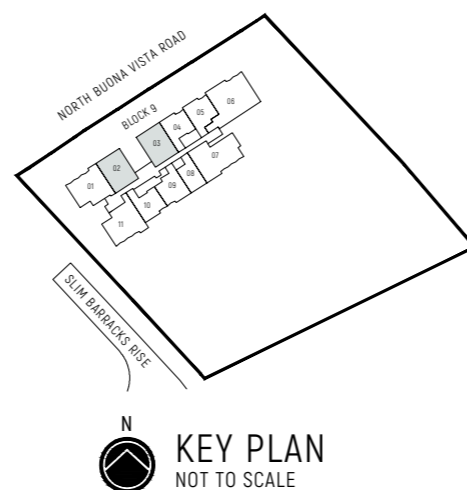
The balcony shall not be enclosed. Only approved balcony screens are to be used. For illustration of the approved balcony screen, please refer to diagram annexed hereto as "Annexure A".

All plans are subjected to amendments as may be approved by the relevant authorities. Floor areas are approximate measurements and are subjected to final survey.

All RC Ledge (Reinforced Concrete Ledge) are excluded from strata area.

BP Approval No. A1720-00020-2021-BP02 dated 17/03/2023

BUYCONDO



KEY PLAN
NOT TO SCALE



LEGEND (where applicable):

- Non-Structural Wall
- Structural Wall (no hacking allowed)
- Services Void Space (excluded from strata area)
- F - Fridge
- IH - Induction Hob
- ST - Storage
- W - Washer
- GH - Gas Hob
- DB - Distribution Board
- HS - Household Shelter
- CO - Convection Oven
- WC - Water Closet

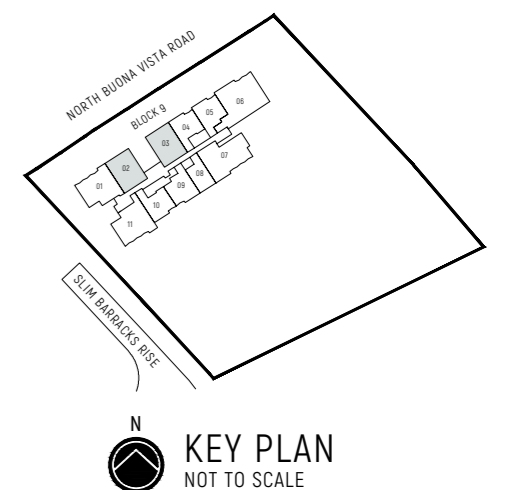
* - Mirror Image

The balcony shall not be enclosed. Only approved balcony screens are to be used. For illustration of the approved balcony screen, please refer to diagram annexed hereto as "Annexure A".

All plans are subjected to amendments as may be approved by the relevant authorities. Floor areas are approximate measurements and are subjected to final survey.

All RC Ledge (Reinforced Concrete Ledge) are excluded from strata area.

BP Approval No. A1720-00020-2021-BP02 dated 17/03/2023



KEY PLAN
NOT TO SCALE

4 - BEDROOM

TYPE D1

121 sq m / 1302 sq ft

BLOCK 9

UNIT

#03-07 TO #26-07

4 - BEDROOM

TYPE D1-PH

143 sq m / 1539 sq ft
[inclusive of 22 sq m / 237 sq ft of void area (high ceiling)]

BLOCK 9

UNIT

#27-07



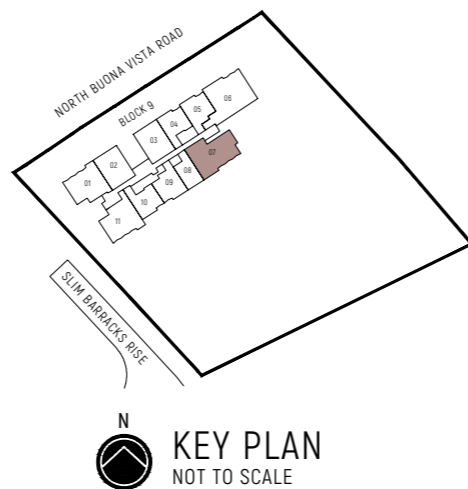
Dotted Line denotes Strata Void Area for Type D1-PH which is part of the Strata Void



LEGEND (where applicable):

- Non-Structural Wall
- Structural Wall (no hacking allowed)
- Services Void Space (excluded from strata area)
- F - Fridge
- IH - Induction Hob
- ST - Storage
- W - Washer
- GH - Gas Hob
- DB - Distribution Board
- WC - Water Closet
- HS - Household Shelter
- CO - Convection Oven

* - Mirror Image



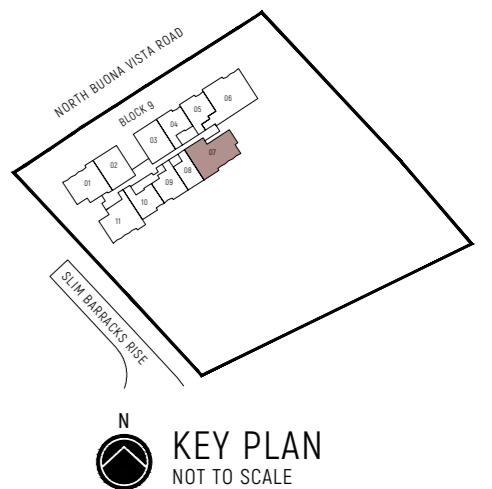
The balcony shall not be enclosed. Only approved balcony screens are to be used. For illustration of the approved balcony screen, please refer to diagram annexed hereto as "Annexure A". All plans are subjected to amendments as may be approved by the relevant authorities. Floor areas are approximate measurements and are subjected to final survey. All RC Ledge (Reinforced Concrete Ledge) are excluded from strata area. BP Approval No. A1720-00020-2021-BP02 dated 17/03/2023



LEGEND (where applicable):

- Non-Structural Wall
- Structural Wall (no hacking allowed)
- Services Void Space (excluded from strata area)
- F - Fridge
- IH - Induction Hob
- ST - Storage
- W - Washer
- GH - Gas Hob
- DB - Distribution Board
- WC - Water Closet
- HS - Household Shelter
- CO - Convection Oven

* - Mirror Image



The balcony shall not be enclosed. Only approved balcony screens are to be used. For illustration of the approved balcony screen, please refer to diagram annexed hereto as "Annexure A". All plans are subjected to amendments as may be approved by the relevant authorities. Floor areas are approximate measurements and are subjected to final survey. All RC Ledge (Reinforced Concrete Ledge) are excluded from strata area. BP Approval No. A1720-00020-2021-BP02 dated 17/03/2023

4 - BEDROOM PREMIUM

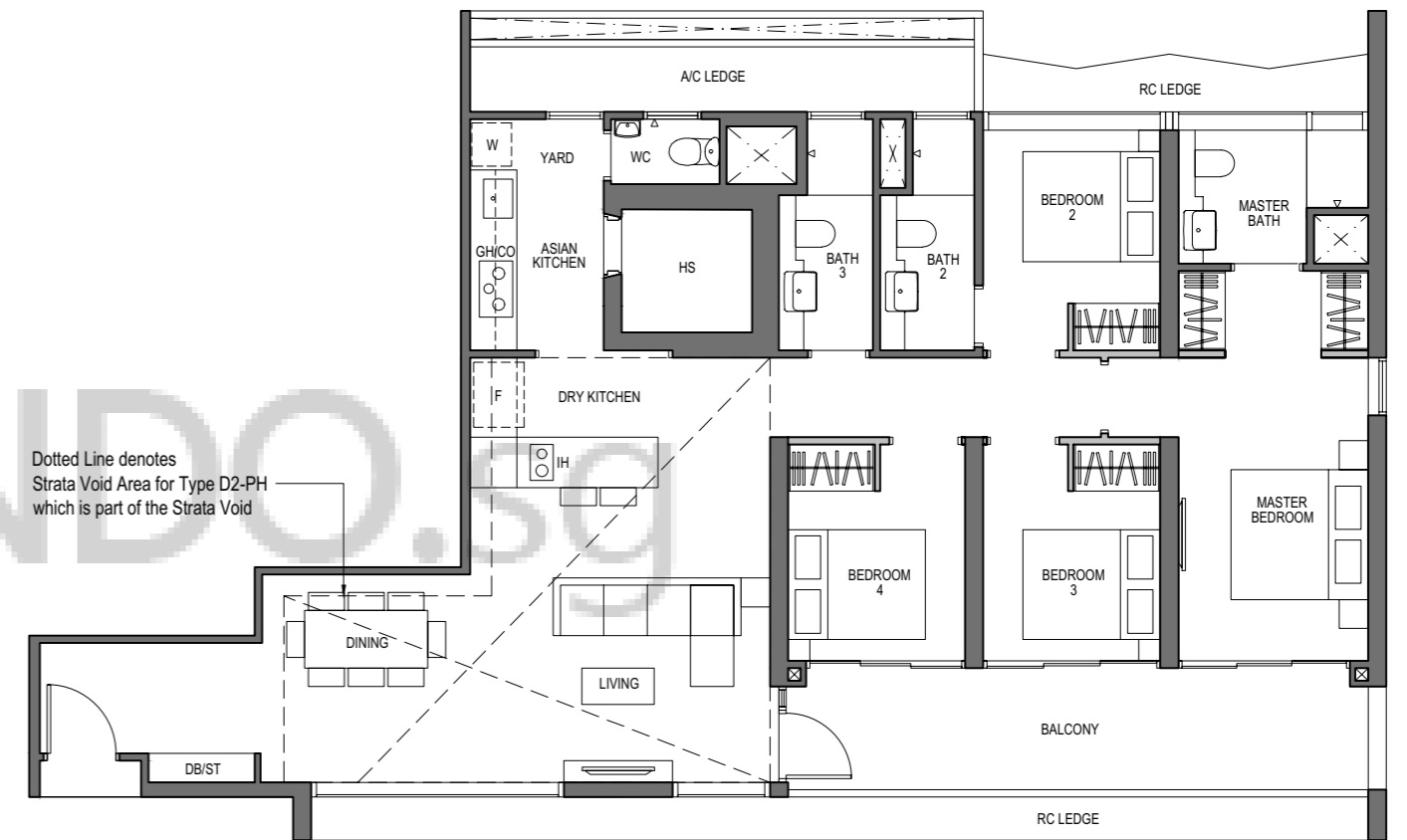
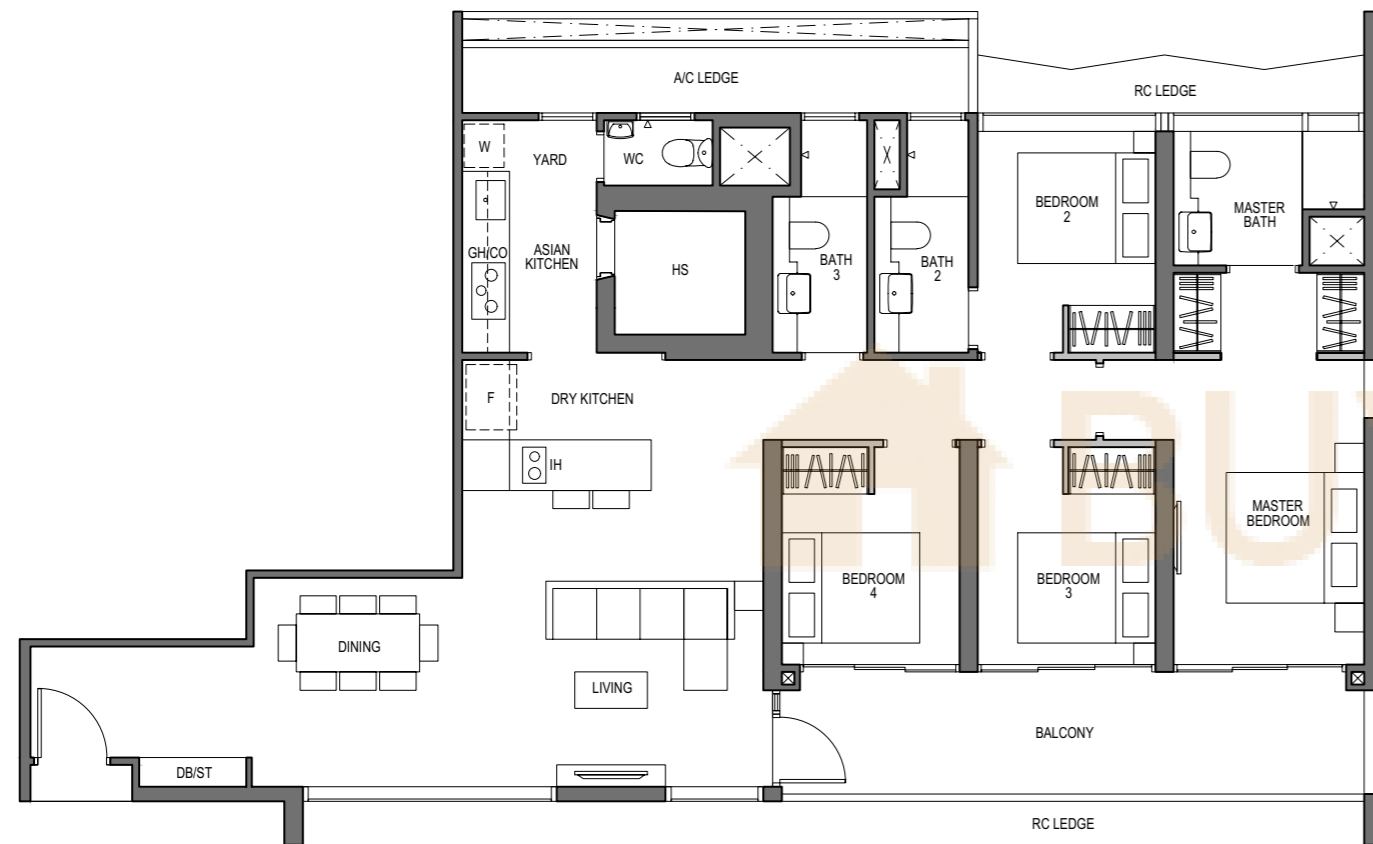
TYPE D2
140 sq m / 1507 sq ft

BLOCK 9
UNIT
#03-06 TO #26-06

4 - BEDROOM PREMIUM

TYPE D2-PH
175 sq m / 1884 sq ft
[inclusive of 35 sq m / 377 sq ft of void area (high ceiling)]

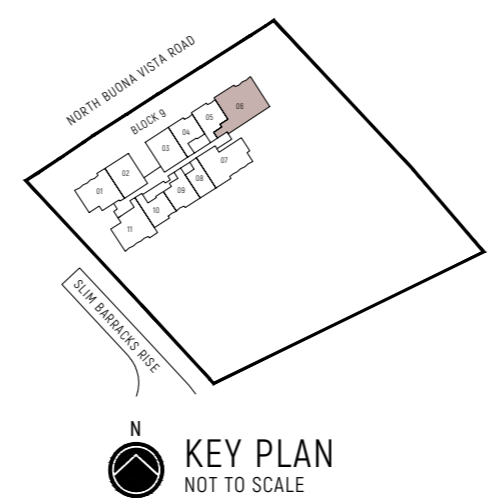
BLOCK 9
UNIT
#27-06



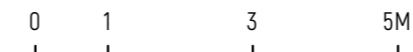
Dotted Line denotes Strata Void Area for Type D2-PH which is part of the Strata Void



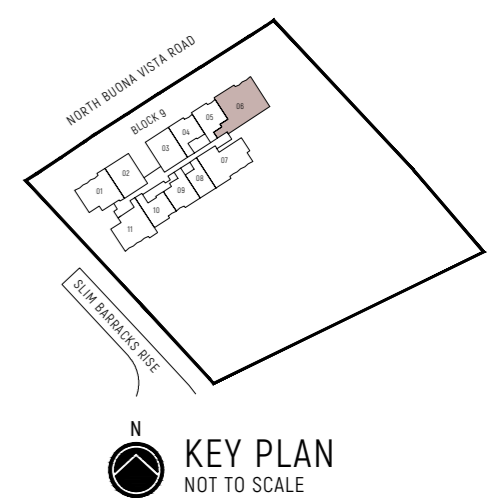
- LEGEND (where applicable):
- Non-Structural Wall
 - Structural Wall (no hacking allowed)
 - ⊠ Services Void Space (excluded from strata area)
 - * - Mirror Image
 - F - Fridge
 - IH - Induction Hob
 - ST - Storage
 - W - Washer
 - GH - Gas Hob
 - DB - Distribution Board
 - HS - Household Shelter
 - CO - Convection Oven
 - WC - Water Closet



The balcony shall not be enclosed. Only approved balcony screens are to be used. For illustration of the approved balcony screen, please refer to diagram annexed hereto as "Annexure A". All plans are subjected to amendments as may be approved by the relevant authorities. Floor areas are approximate measurements and are subjected to final survey. All RC Ledge (Reinforced Concrete Ledge) are excluded from strata area. BP Approval No. A1720-00020-2021-BP02 dated 17/03/2023



- LEGEND (where applicable):
- Non-Structural Wall
 - Structural Wall (no hacking allowed)
 - ⊠ Services Void Space (excluded from strata area)
 - * - Mirror Image
 - F - Fridge
 - IH - Induction Hob
 - ST - Storage
 - W - Washer
 - GH - Gas Hob
 - DB - Distribution Board
 - HS - Household Shelter
 - CO - Convection Oven
 - WC - Water Closet



The balcony shall not be enclosed. Only approved balcony screens are to be used. For illustration of the approved balcony screen, please refer to diagram annexed hereto as "Annexure A". All plans are subjected to amendments as may be approved by the relevant authorities. Floor areas are approximate measurements and are subjected to final survey. All RC Ledge (Reinforced Concrete Ledge) are excluded from strata area. BP Approval No. A1720-00020-2021-BP02 dated 17/03/2023