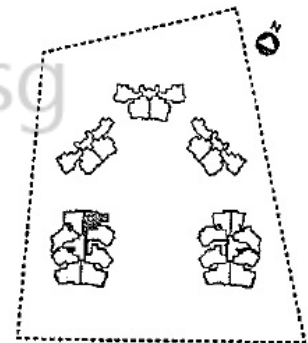
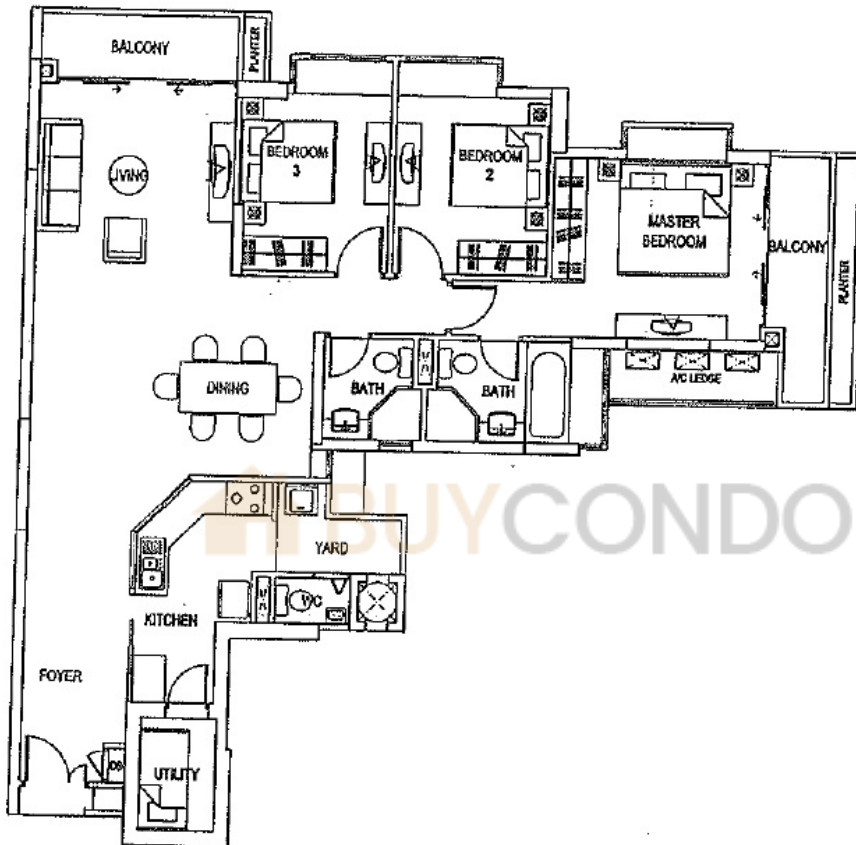


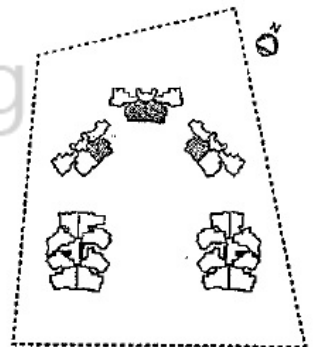
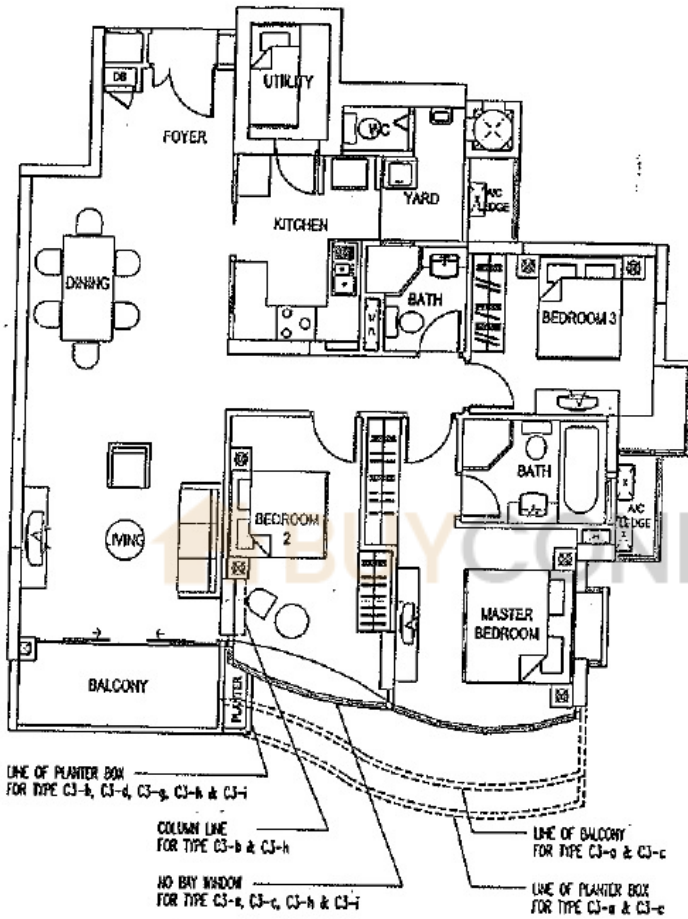
Type D1 (143 sq m/1,540 sq ft)
 BLOCK 66 ✓
 #03-10 #04-10 #07-10 #08-10
 #11-10 #12-10 #15-10 #16-10
 #19-10 #20-10 #02-11 #05-11
 #06-11 #09-11 #10-11 #13-11
 #14-11 #17-11 #18-11 #21-11
 BLOCK 68 ✓
 #03-22 #04-22 #07-22 #08-22
 #11-22 #12-22 #15-22 #16-22
 #19-22 #20-22 #02-23 #05-23
 #06-23 #09-23 #10-23 #13-23
 #14-23 #17-23 #18-23 #21-23

Type D1-a (156 sq m/1,680 sq ft)
 BLOCK 66 ✓
 #02-10 #05-10 #06-10 #09-10
 #10-10 #13-10 #14-10 #17-10
 #18-10 #21-10
 BLOCK 68 ✓
 #02-22 #05-22 #06-22 #09-22
 #10-22 #13-22 #14-22 #17-22
 #18-22 #21-22

Type D1-b (143 sq m/1,540 sq ft)
 BLOCK 66 ✓
 #03-11 #04-11 #07-11 #08-11
 #11-11 #12-11 #15-11 #16-11
 #19-11 #20-11
 BLOCK 68 ✓
 #03-23 #04-23 #07-23 #08-23
 #11-23 #12-23 #15-23 #16-23
 #19-23 #20-23



Type C4 (129 sq m / 1,389 sq ft)
 BLOCK 68
 #02-19 - #21-19



Type C3-a (127 sq m / 1,368 sq ft)
BLOCK 70
#02-26 #05-26 #06-26 #09-26
#10-26 #13-26 #14-26 #17-26
#18-26 #21-26

Type C3-c (127 sq m / 1,368 sq ft)
BLOCK 60
#02-02 #05-02 #06-02 #09-02
#10-02 #13-02 #14-02 #17-02
#18-02 #21-02

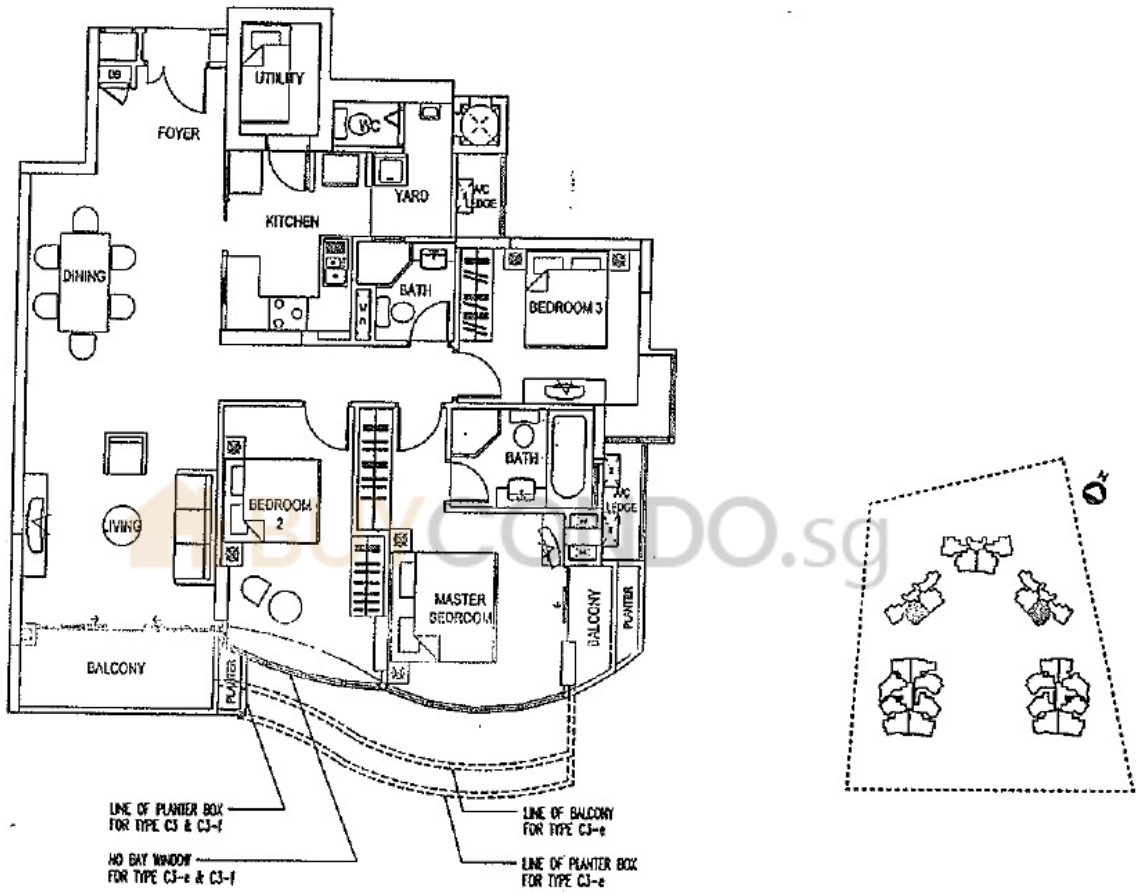
Type C3-g (119 sq m / 1,281 sq ft)
BLOCK 70
#03-26 #04-26 #07-26 #08-26
#11-26 #12-26 #15-26 #16-26
#19-26 #20-26

Type C3-i (118 sq m / 1,271 sq ft)
BLOCK 62
#03-07 #04-07 #07-07 #08-07
#11-07 #12-07 #15-07 #16-07
#19-07 #20-07

Type C3-b (119 sq m / 1,281 sq ft)
BLOCK 60
#03-02 #04-02 #07-02 #08-02
#11-02 #12-02 #15-02 #16-02
#19-02 #20-02 #02-03 #05-03
#06-03 #09-03 #10-03 #13-03
#14-03 #17-03 #18-03 #21-03

Type C3-d (119 sq m / 1,281 sq ft)
BLOCK 62
#02-07 #05-07 #06-07 #09-07
#10-07 #13-07 #14-07 #17-07
#18-07 #21-07

Type C3-h (118 sq m / 1,271 sq ft)
BLOCK 60
#03-03 #04-03 #07-03 #08-03
#11-03 #12-03 #15-03 #16-03
#19-03 #20-03



Type C3 (121 sq m / 1,303 sq ft)
BLOCK 62

#03-06 #04-06 #07-06 #08-06
#11-06 #12-06 #15-06 #16-06
#19-06 #20-06

BLOCK 70

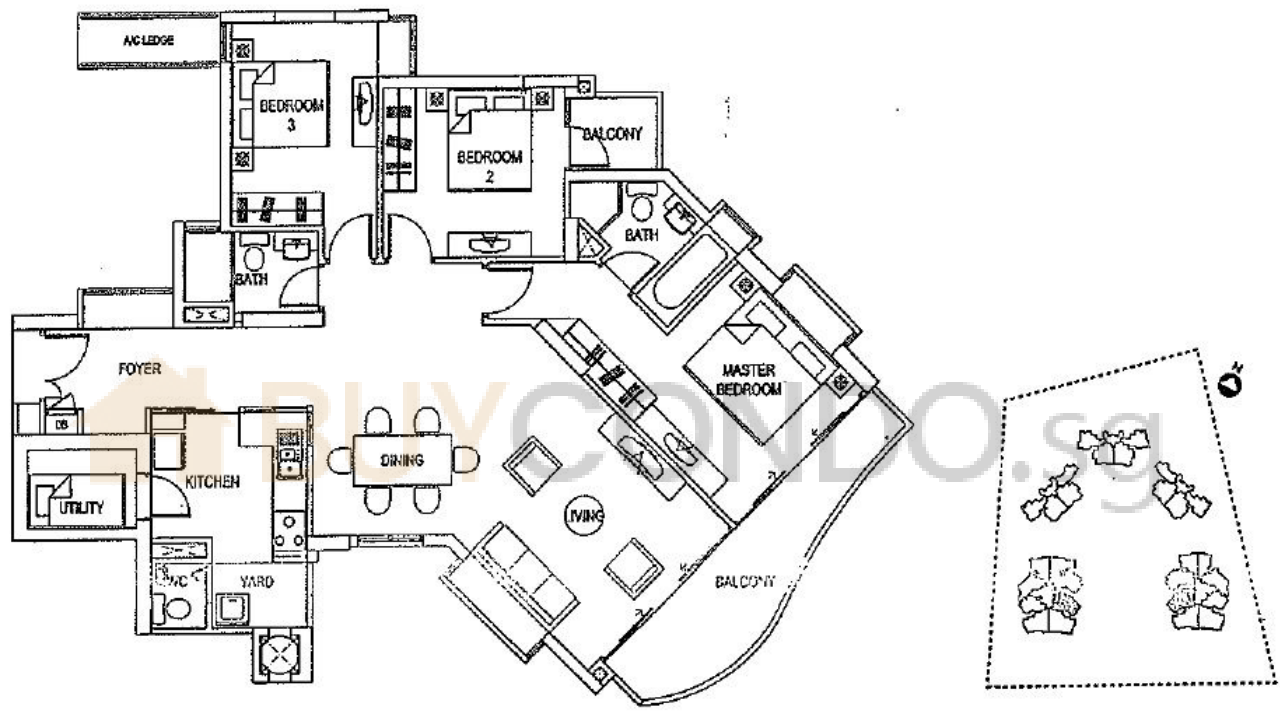
#02-27 #05-27 #06-27 #09-27
#10-27 #13-27 #14-27 #17-27
#18-27 #21-27

Type C3-e (129 sq m / 1,389 sq ft)
BLOCK 62

#02-06 #05-06 #06-06 #09-06
#10-06 #13-06 #14-06 #17-06
#18-06 #21-06

Type C3-f (120 sq m / 1,292 sq ft)
BLOCK 70

#03-27 #04-27 #07-27 #08-27
#11-27 #12-27 #15-27 #16-27
#19-27 #20-27



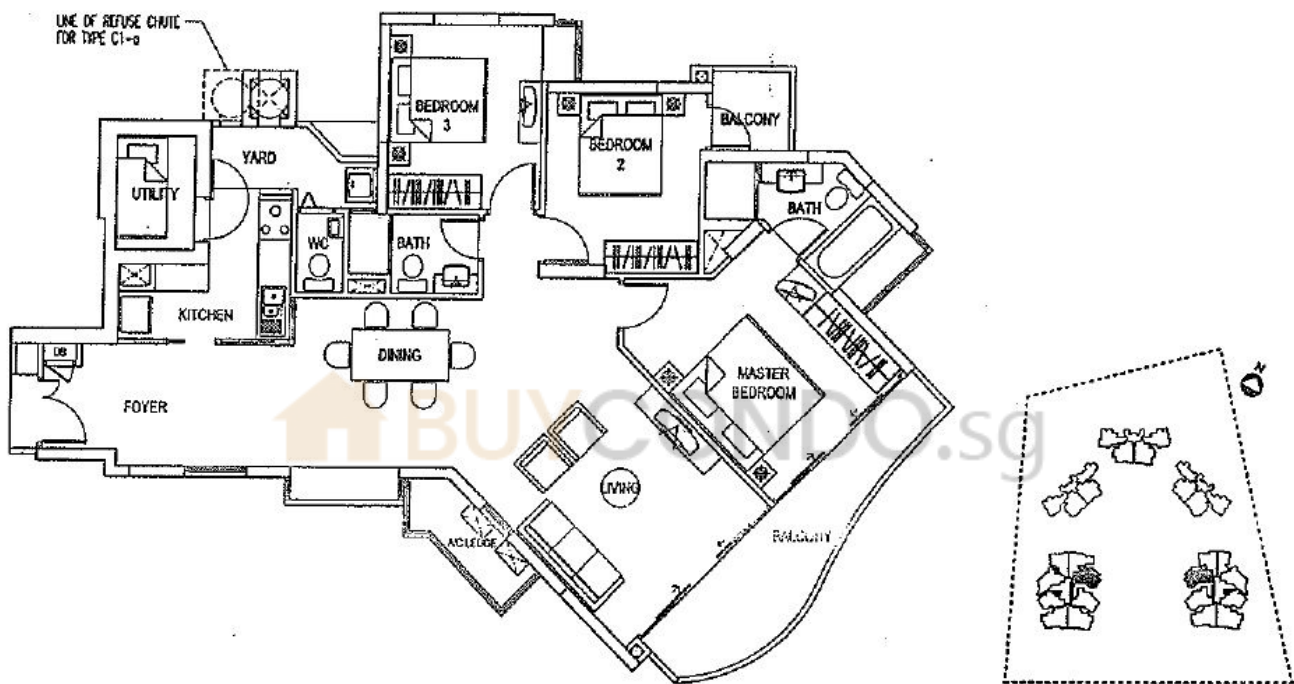
Type C2 (123 sq m / 1,324 sq ft)

BLOCK 66

#02-12 - #21-12 /

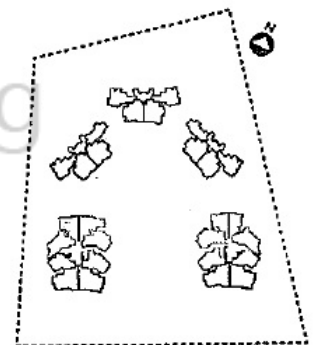
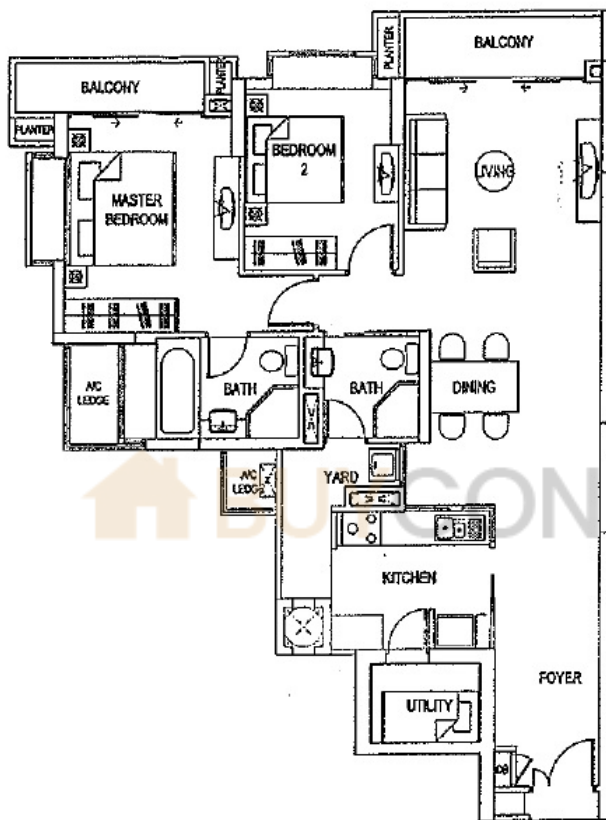
BLOCK 68

#02-21 - #21-21 /

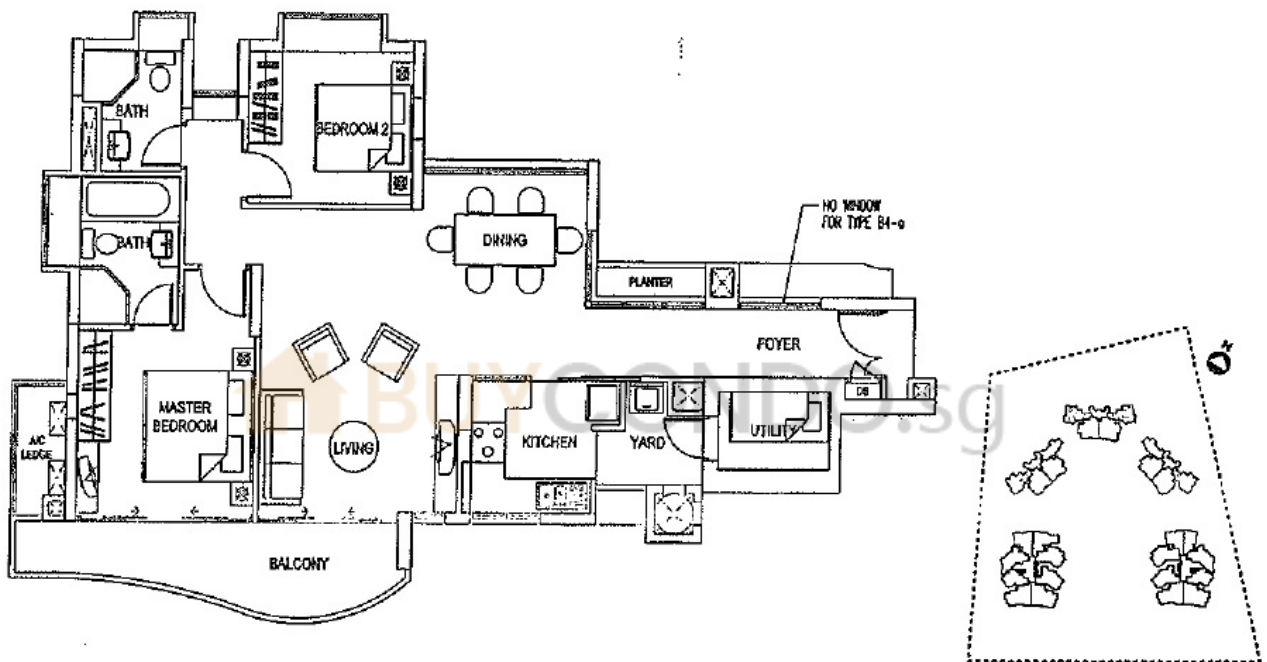


Type C1 (122 sq m/1,314 sq ft)
 BLOCK 68
 #02-20 - #21-20 /

Type C1-a (122 sq m/1,314 sq ft)
 BLOCK 66
 #02-13 - #21-13 /

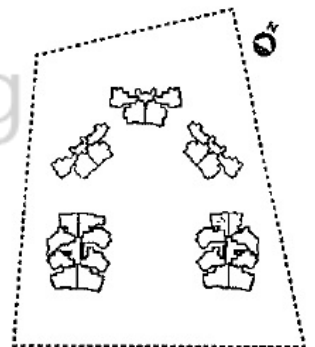
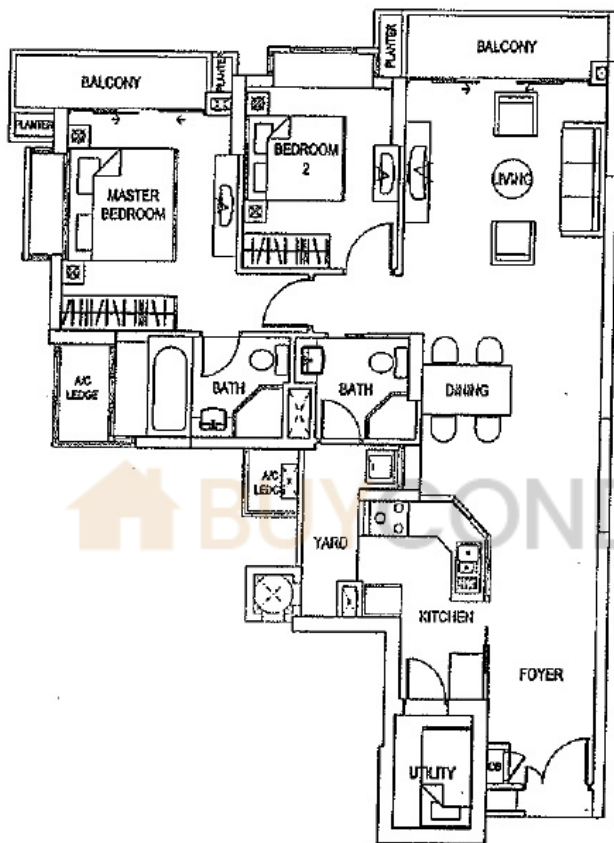


Type B5 (106 sq m / 1,141 sq ft)
 BLOCK 68
 #02-18 - #21-18

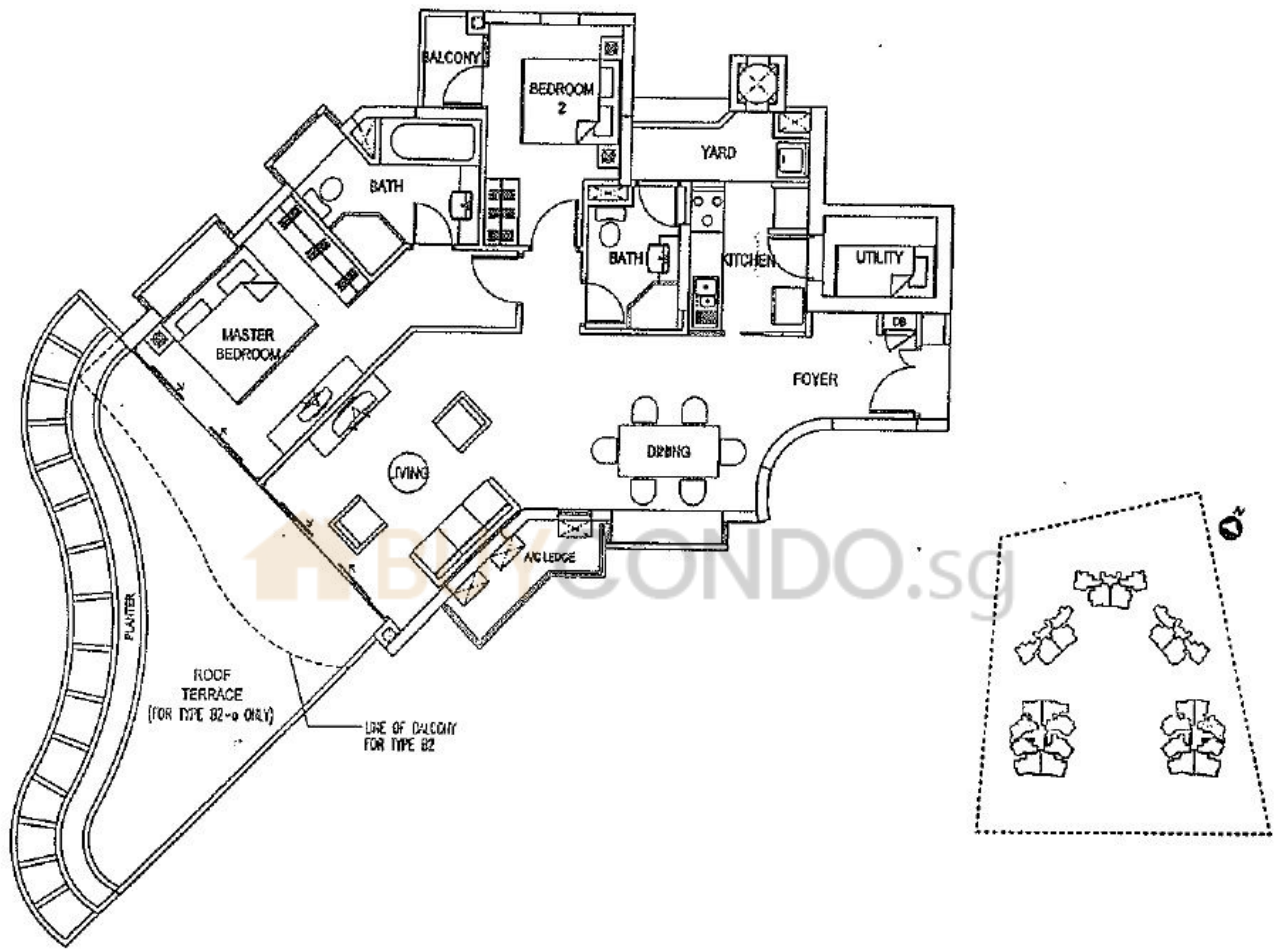


Type B4 (103 sq m / 1,109 sq ft)
 BLOCK 60
 #03-01 - #21-01 /
 #02-04 - #21-04 /
 BLOCK 62
 #02-05 - #21-05 ✓
 BLOCK 70
 #02-28 - #21-28 /

Type B4-a (103 sq m / 1,109 sq ft)
 BLOCK 60 ✓
 #02-01 /

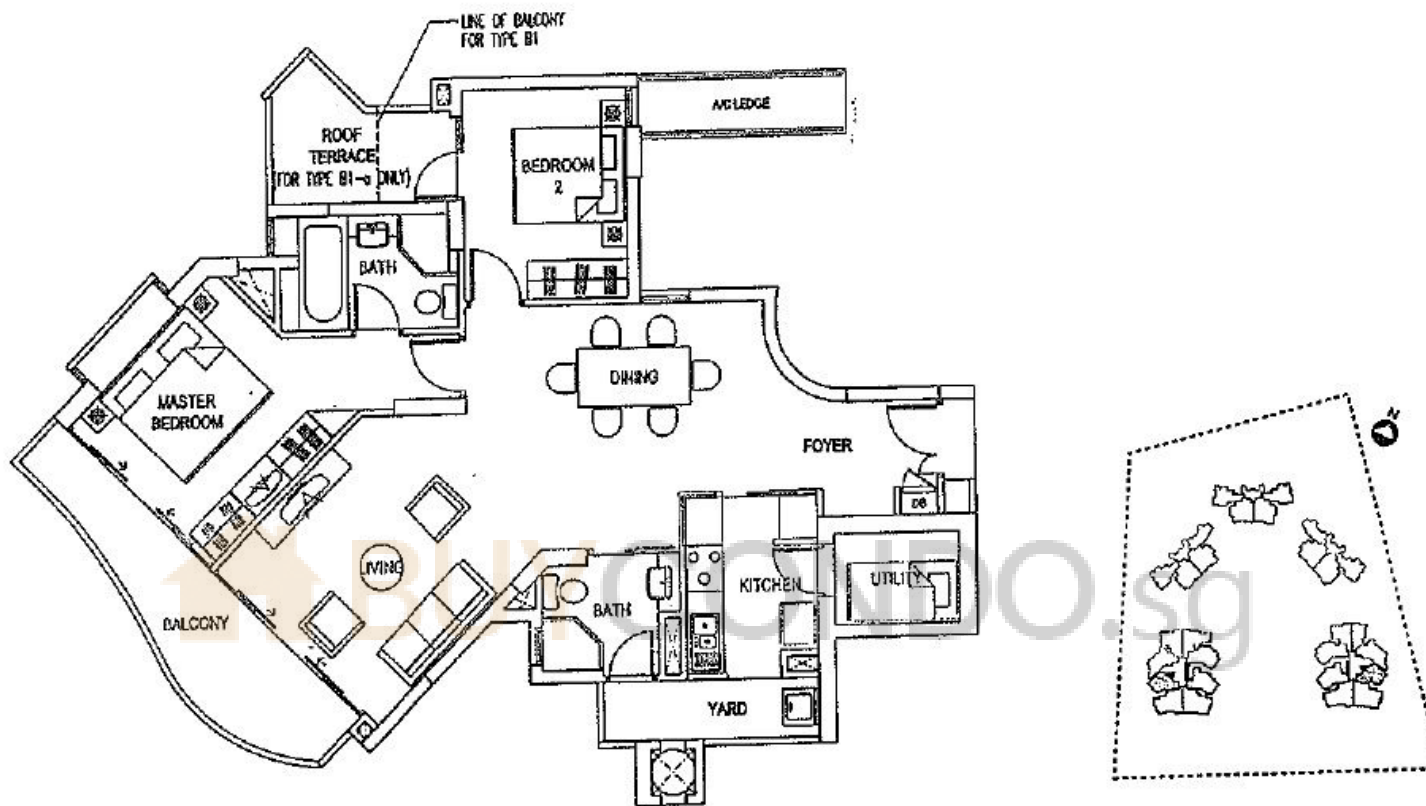


Type B3 (106 sq m / 1,141 sq ft)
 BLOCK 66
 #02-14 - #21-14 ✓



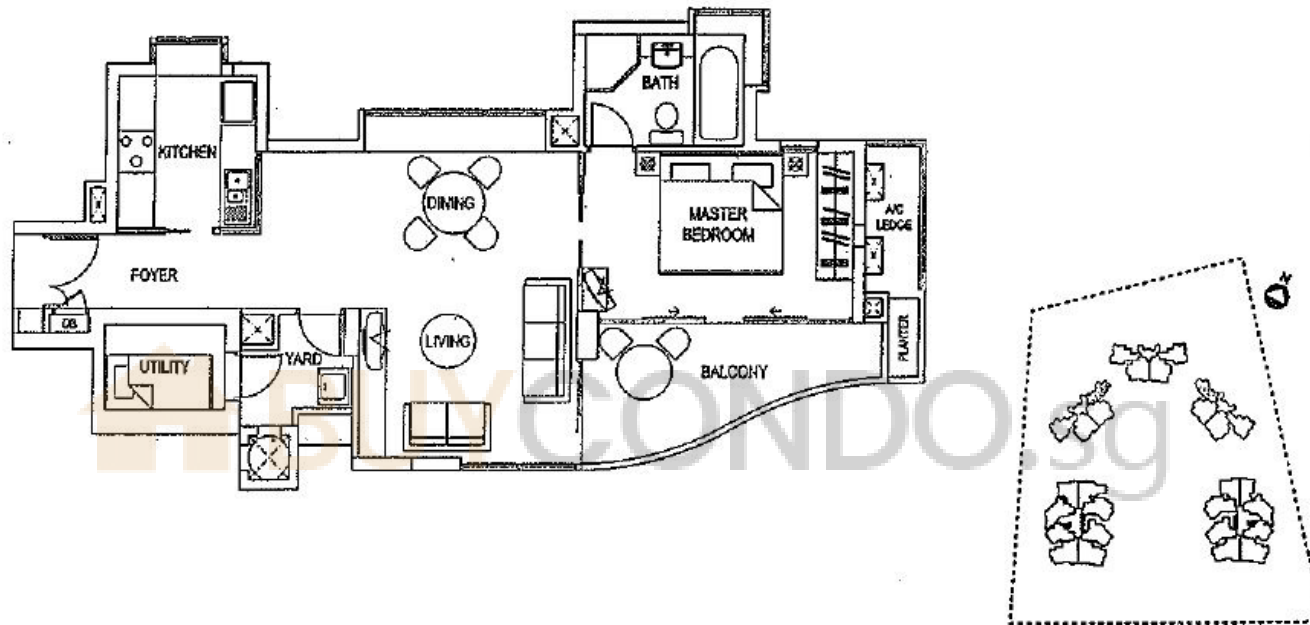
Type B2 (107 sq m / 1,152 sq ft)
 BLOCK 66
 #03-16 - #21-16 ✓
 BLOCK 68
 #03-17 - #21-17 ✓

Type B2-a (126 sq m / 1,357 sq ft)
 BLOCK 66
 #02-16 ✓
 BLOCK 68
 #02-17 ✓



Type B1 (103 sq m/1,109 sq ft)
 BLOCK 66
 #03-09 - #21-09 ✓
 BLOCK 68
 #03-24 - #21-24 ✓

Type B1-a (107 sq m/1,152 sq ft)
 BLOCK 66
 #02-09 ✓
 BLOCK 68
 #02-24 ✓



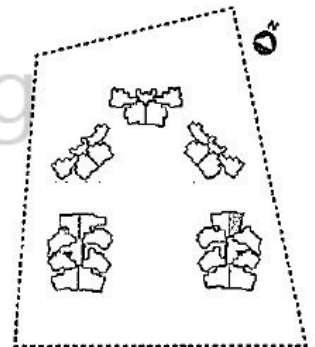
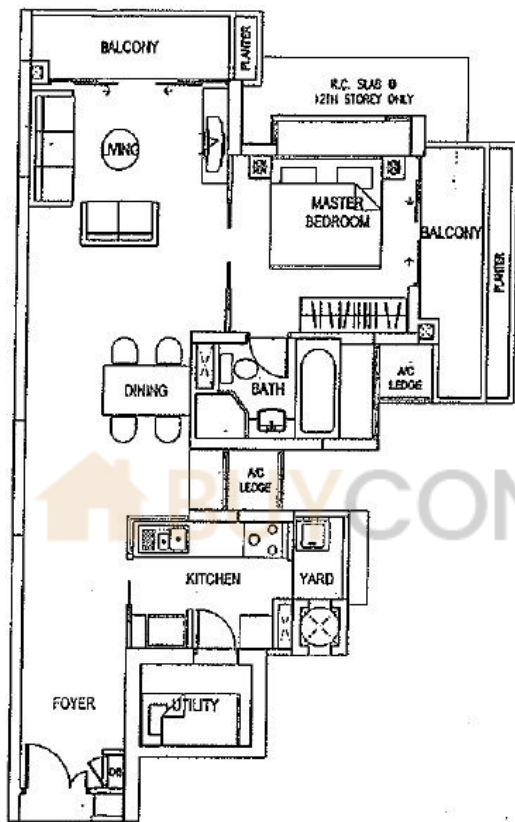
Type A2 (78 sq m / 840 sq ft)

BLOCK 62

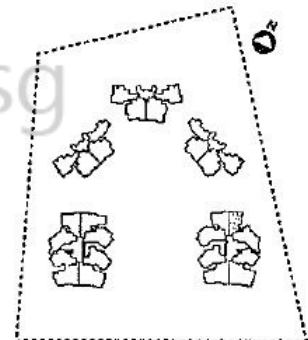
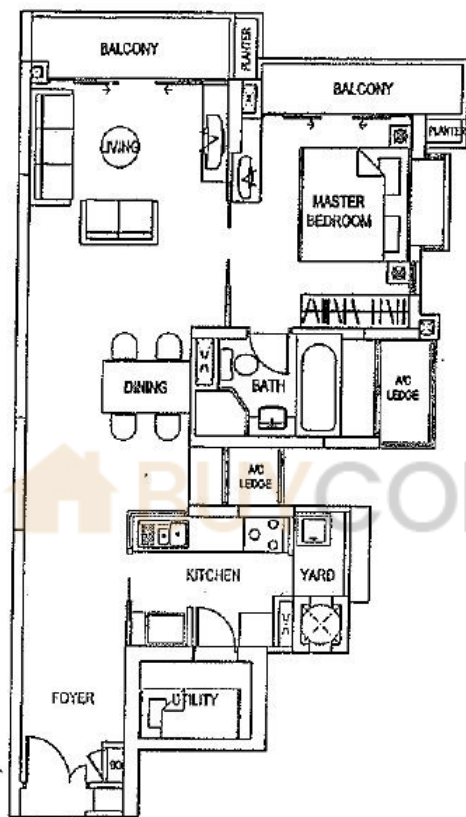
#02-08 - #21-08 ✓

BLOCK 70

#02-25 - #21-25 ✓



Type A1-a (85 sq m / 915 sq ft)
 BLOCK 66
 #13-15 - #21-15 ✓



Type A1 (84 sq m/905 sq ft)
 BLOCK 66
 #02-15 -- #12-15 ✓