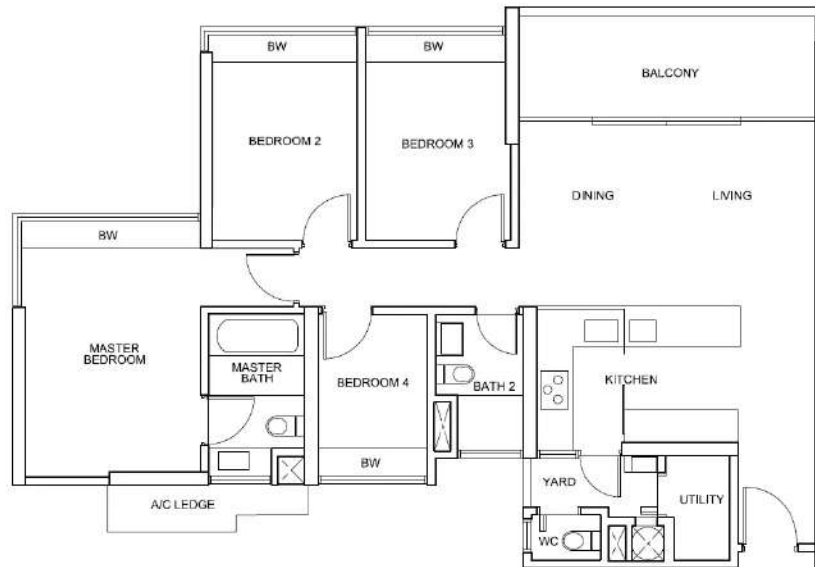


# CENTRO RESIDENCES



SCALE 1:100

0 1 2 3 4 5 6M

## UNIT TYPE D1c(b)

#24-01 TO #29-01

The above plans are subject to change as may be approved by the relevant authorities.

BCA BP Plan No.: A1608-00002-2008

Approved Date:

BP01 - 16 December 2008

BP02 - 10 July 2009

BP03 - 06 August 2009

BP04 - 21 November 2011

BP05 - 23 March 2012