

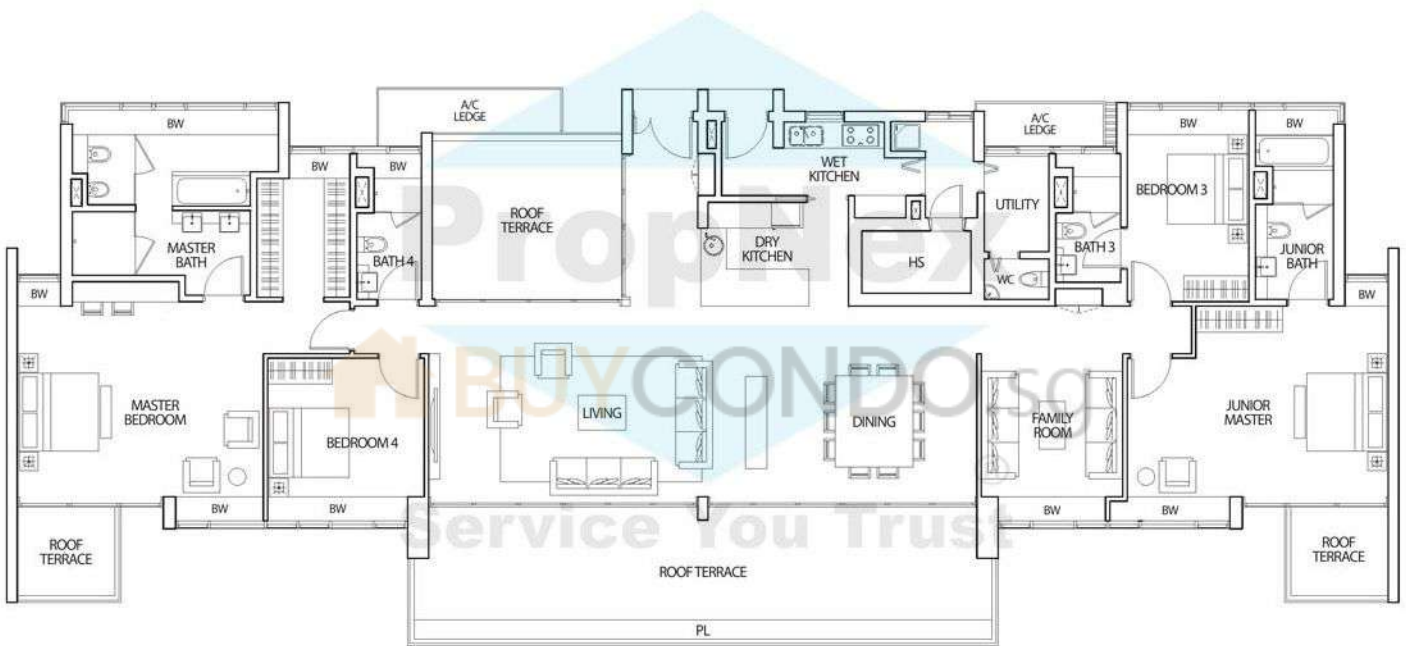
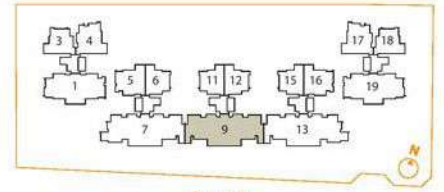
PENTHOUSE

# TYPE P3

343 sq.m. / 3,692 sq.ft.

Including Open Roof Terrace of 68 sq.m.

#19-09



**NOTES:**

Plans are not to scale and subject to any amendment as may be approved by the relevant authorities. All floor areas are approximate and are subject to final survey.

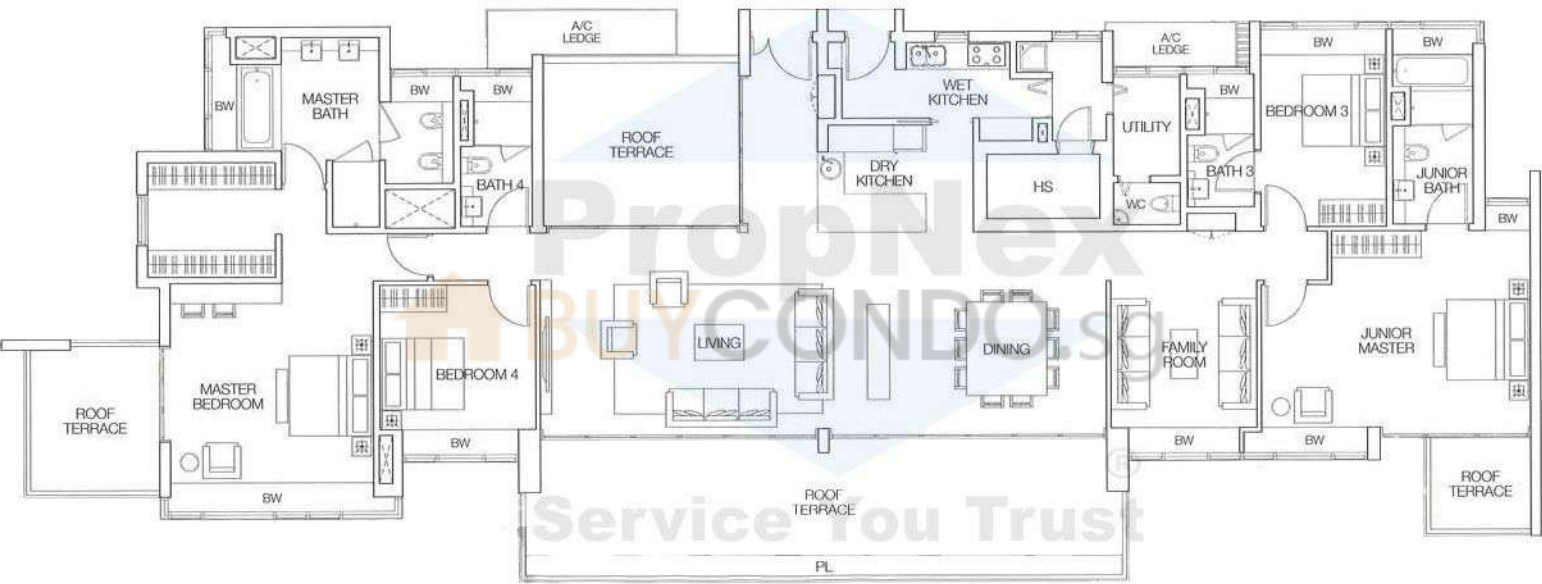
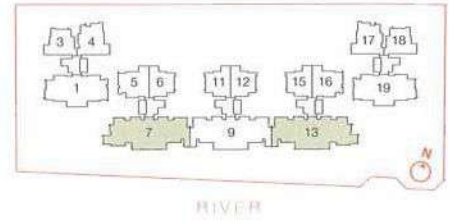
PENTHOUSE

# TYPE P2

345 sq.m. / 3,714 sq.ft.

Including Open Roof Terrace of 73 sq.m.

#19-07, #19-13



NOTES

Plans are not to scale and subject to any amendment as may be approved by the relevant authorities. All floor areas are approximate and are subject to final survey.

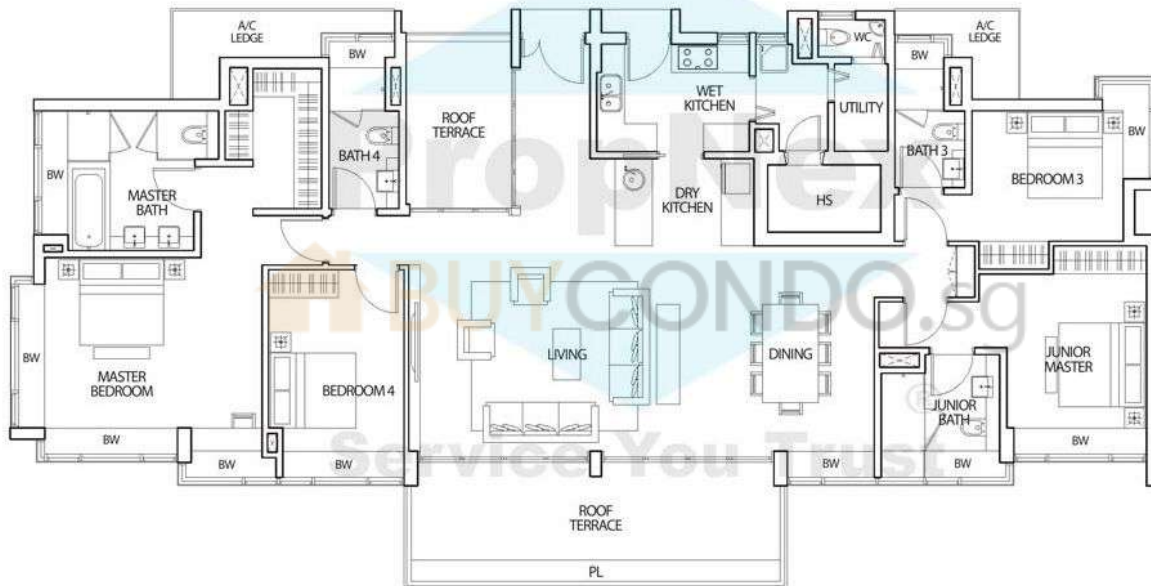
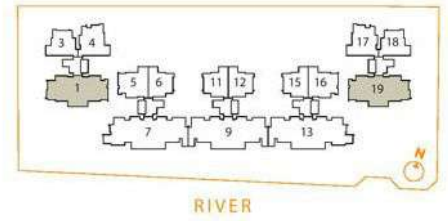
PENTHOUSE

# TYPE P1

242 sq.m. / 2,605 sq.ft.

Including Open Roof Terrace of  
27 sq.m.

#19-01, #19-19



**NOTES:**

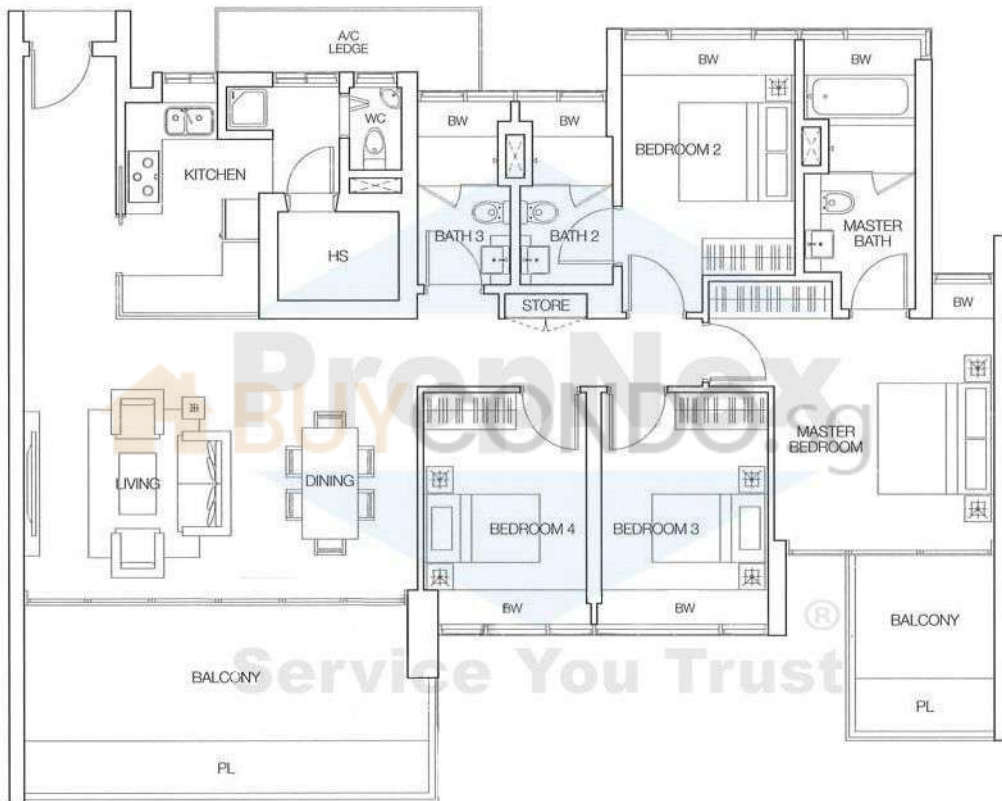
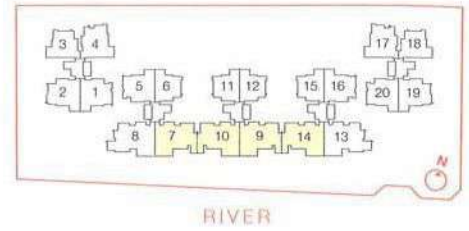
Plans are not to scale and subject to any amendment as may be approved by the relevant authorities. All floor areas are approximate and are subject to final survey.

4-BEDROOM

# TYPE C2

170 sq.m. / 1,830 sq.ft.

- #02-07 to #18-07
- #02-09 to #18-09
- #02-10 to #18-10
- #02-14 to #18-14



### NOTES:

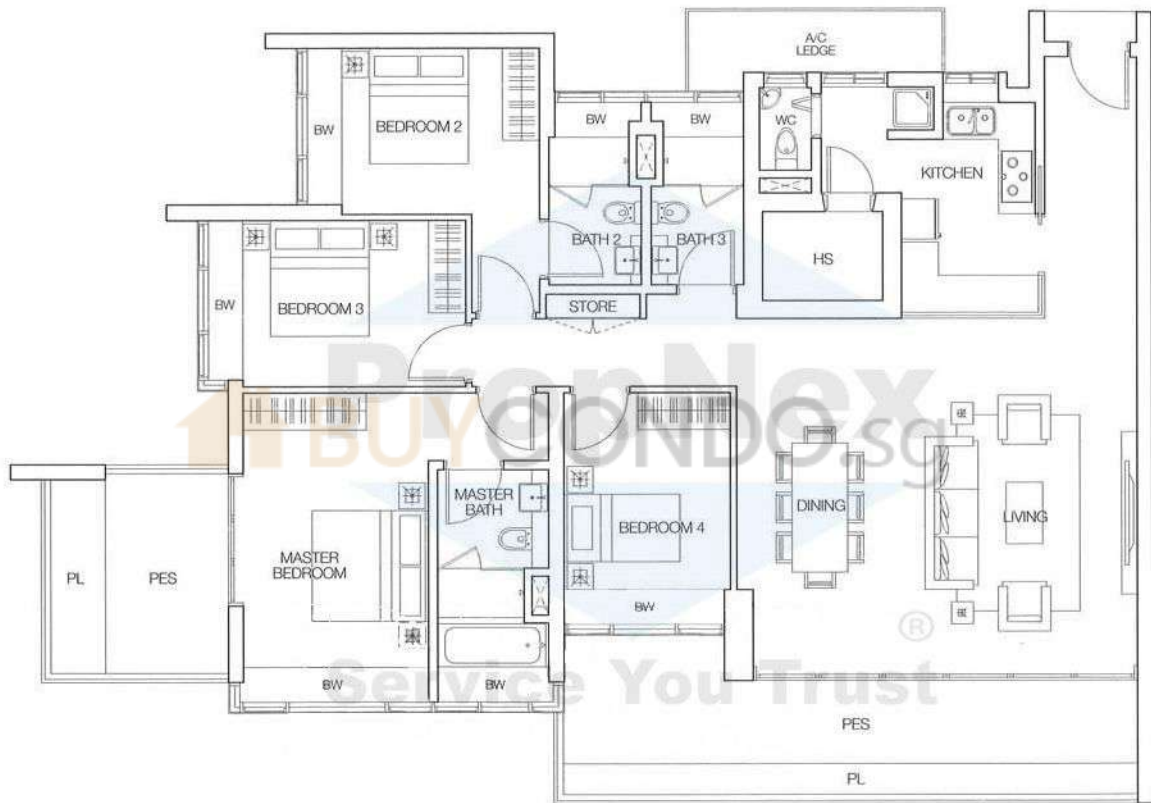
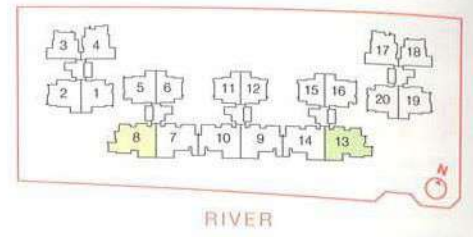
Plans are not to scale and subject to any amendment as may be approved by the relevant authorities. All floor areas are approximate and are subject to final survey.

4-BEDROOM

# TYPE C1p

183 sq.m. / 1,970 sq.ft.

Including PES of 27 sq.m.  
#01-08, #01-13



**NOTES:**

Plans are not to scale and subject to any amendment as may be approved by the relevant authorities. All floor areas are approximate and are subject to final survey.

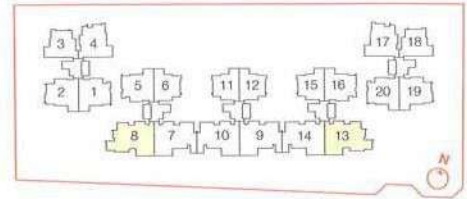
4-BEDROOM

# TYPE C1

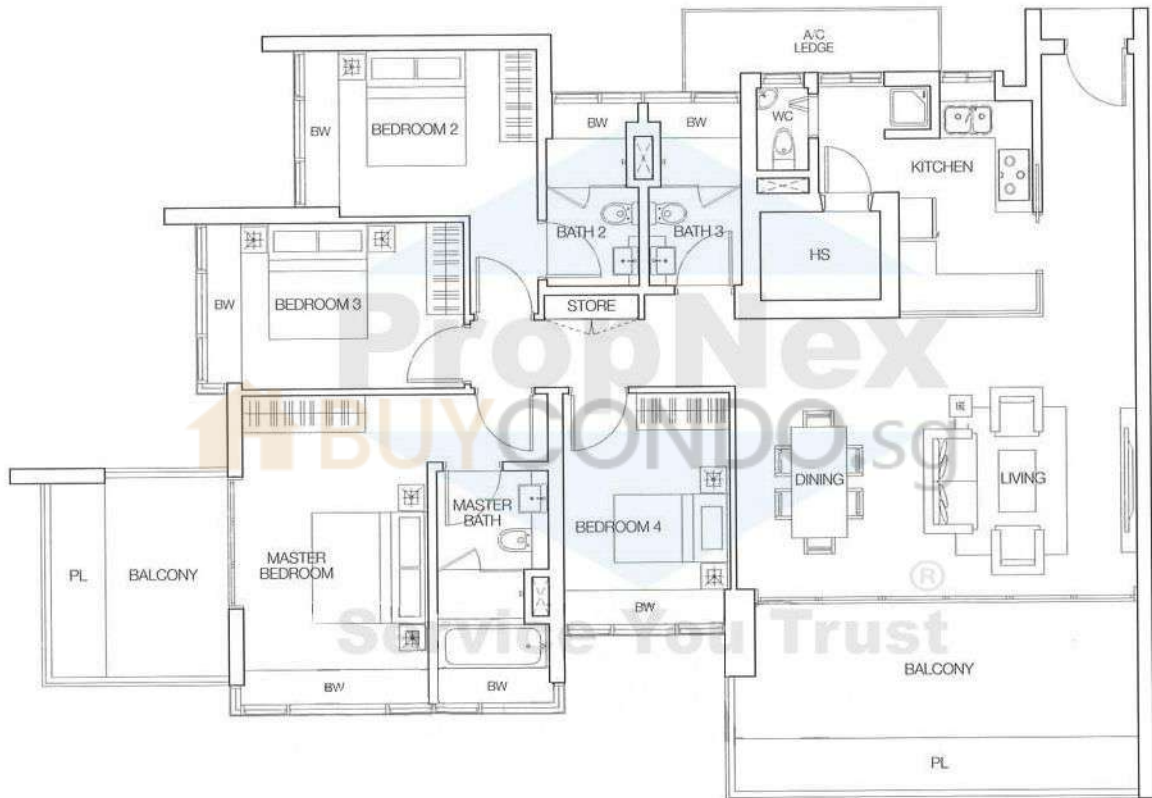
176 sq.m. / 1,894 sq.ft.

#02-08 to #18-08

#02-13 to #18-13



RIVER



**NOTES:**

Plans are not to scale and subject to any amendment as may be approved by the relevant authorities. All floor areas are approximate and are subject to final survey.



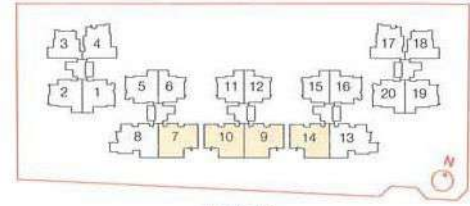
3-BEDROOM

# TYPE B4p

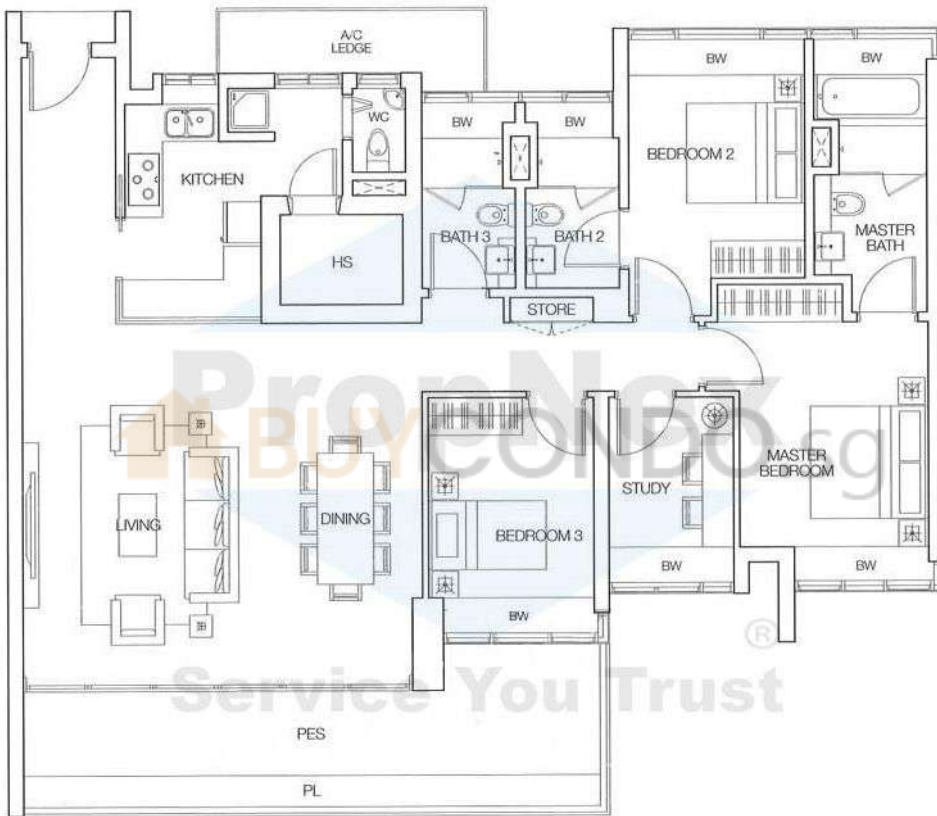
162 sq.m. / 1, 744 sq.ft.

Including PES of 16 sq.m.

#01-07, #01-09, #01-10, #01-14



RIVER



**NOTES:**

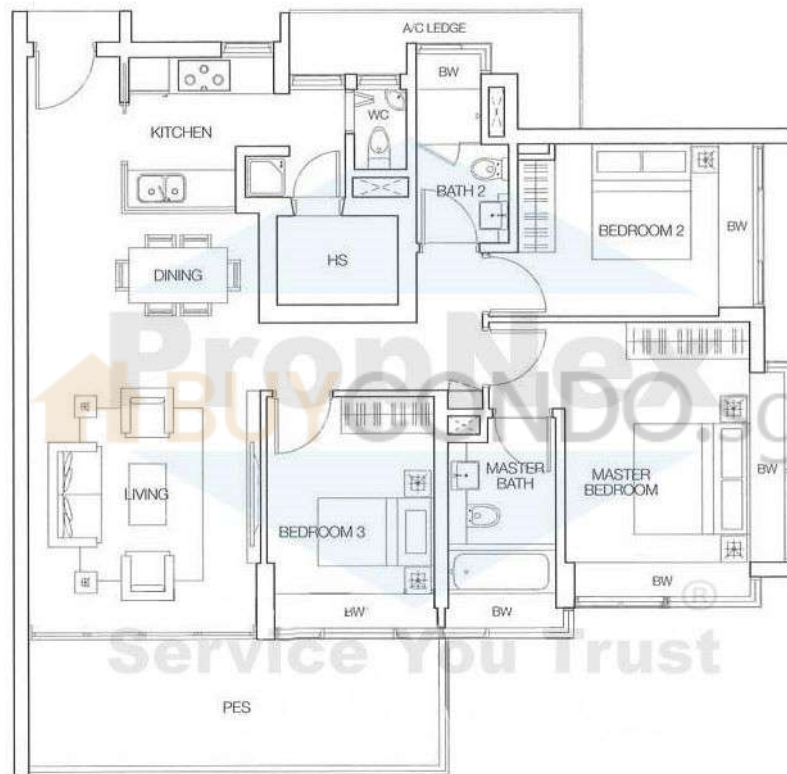
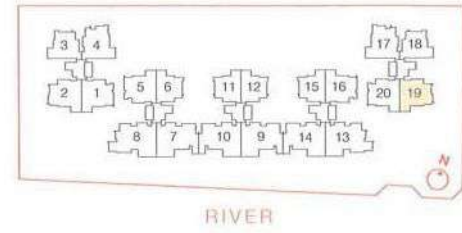
Plans are not to scale and subject to any amendment as may be approved by the relevant authorities. All floor areas are approximate and are subject to final survey.

3-BEDROOM

# TYPE B3p

128 sq.m. / 1,378 sq.ft.

Including PES of 16 sq.m.  
#01-19



**NOTES:**

Plans are not to scale and subject to any amendment as may be approved by the relevant authorities. All floor areas are approximate and are subject to final survey.



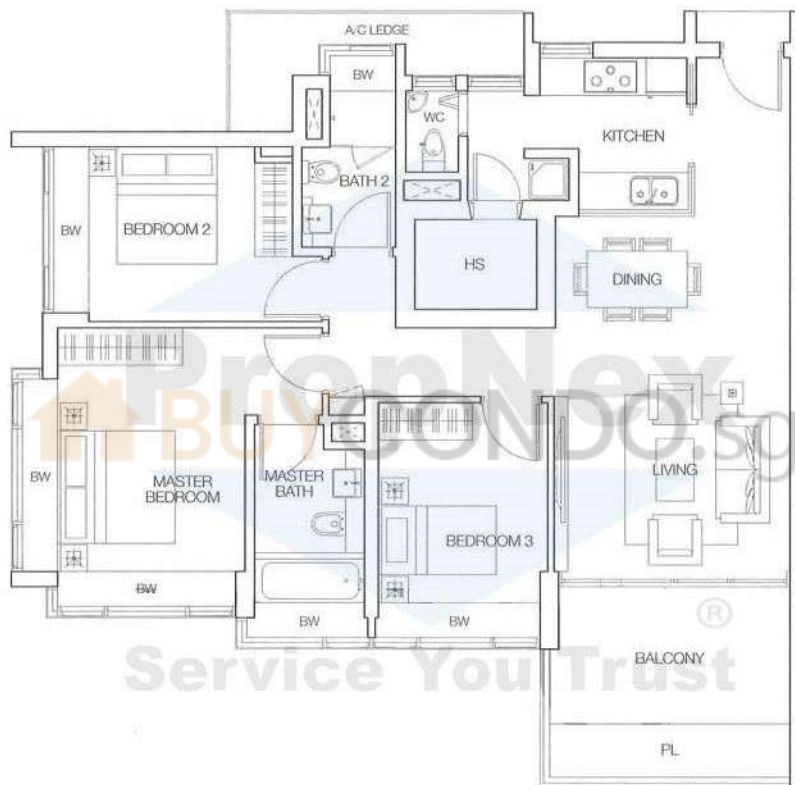
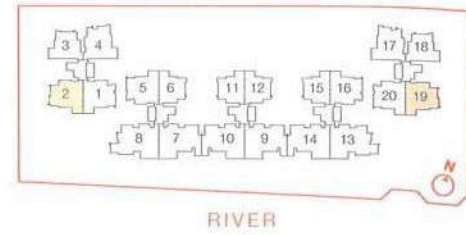
3-BEDROOM

# TYPE B3

122 sq.m. / 1,313 sq.ft.

#03-02 to #18-02

#02-19 to #18-19



**NOTES:**

Plans are not to scale and subject to any amendment as may be approved by the relevant authorities. All floor areas are approximate and are subject to final survey.

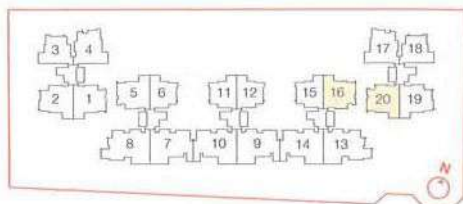
3-BEDROOM

# TYPE B2p

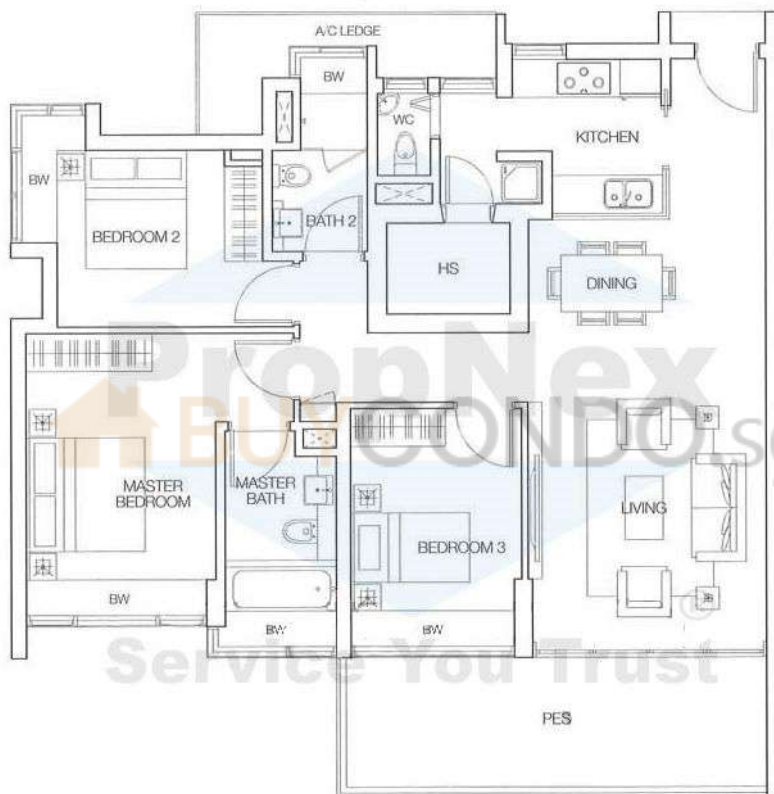
126 sq.m. / 1,356 sq.ft.

Including PES of 16 sq.m.

#02-16, #01-20



RIVER



**NOTES:**

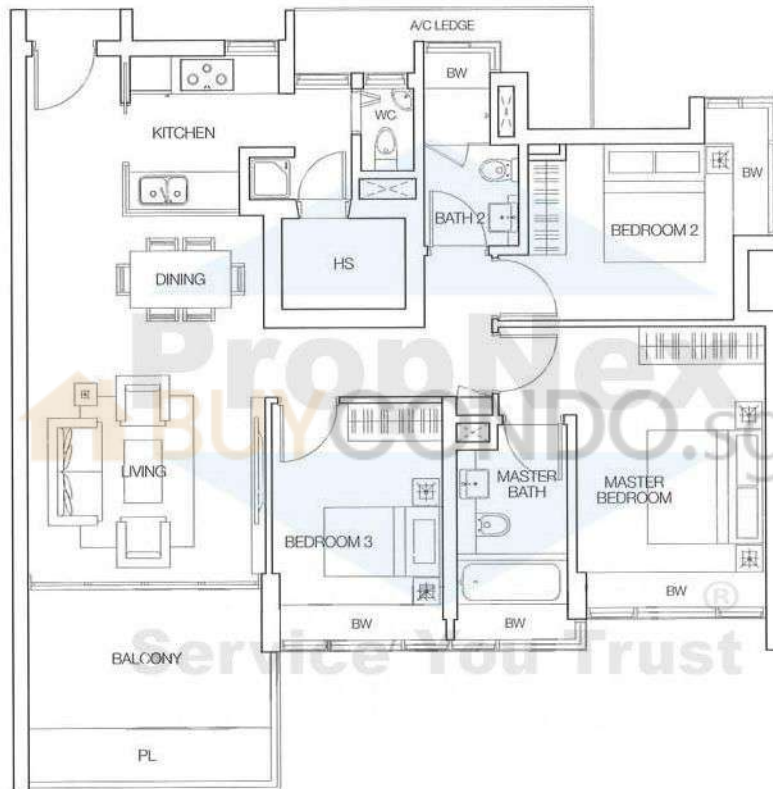
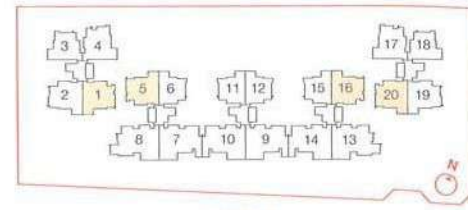
Plans are not to scale and subject to any amendment as may be approved by the relevant authorities. All floor areas are approximate and are subject to final survey.

3-BEDROOM

# TYPE B2

120 sq.m. / 1,292 sq.ft.

- #03-01 to #18-01
- #03-05 to #18-05
- #03-16 to #18-16
- #02-20 to #18-20



## NOTES:

Plans are not to scale and subject to any amendment as may be approved by the relevant authorities. All floor areas are approximate and are subject to final survey.

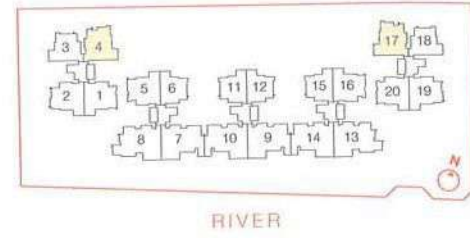
3-BEDROOM

# TYPE B1

122 sq.m. / 1,313 sq.ft.

#03-04 to #18-04

#02-17 to #18-17



### NOTES:

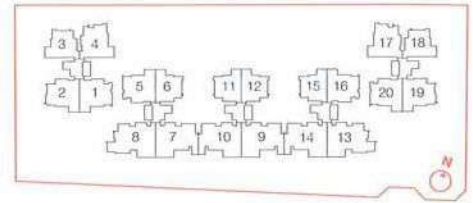
Plans are not to scale and subject to any amendment as may be approved by the relevant authorities. All floor areas are approximate and are subject to final survey.

2-BEDROOM

# TYPE A2p

102 sq.m. / 1,098 sq.ft.

Including PES of 15 sq.m.  
#02-11, #02-12, #02-15



**NOTES:**

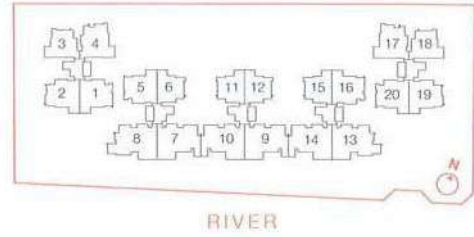
Plans are not to scale and subject to any amendment as may be approved by the relevant authorities. All floor areas are approximate and are subject to final survey.

2-BEDROOM

# TYPE A2

95 sq.m. / 1,023 sq.ft.

- #03-06 to #18-06
- #03-11 to #18-11
- #03-12 to #18-12
- #03-15 to #18-15



**NOTES:**  
Plans are not to scale and subject to any amendment as may be approved by the relevant authorities. All floor areas are approximate and are subject to final survey.

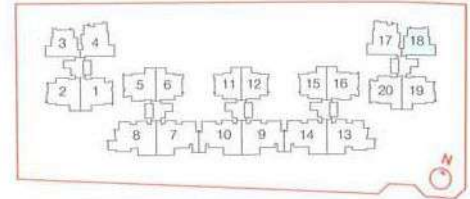


2-BEDROOM

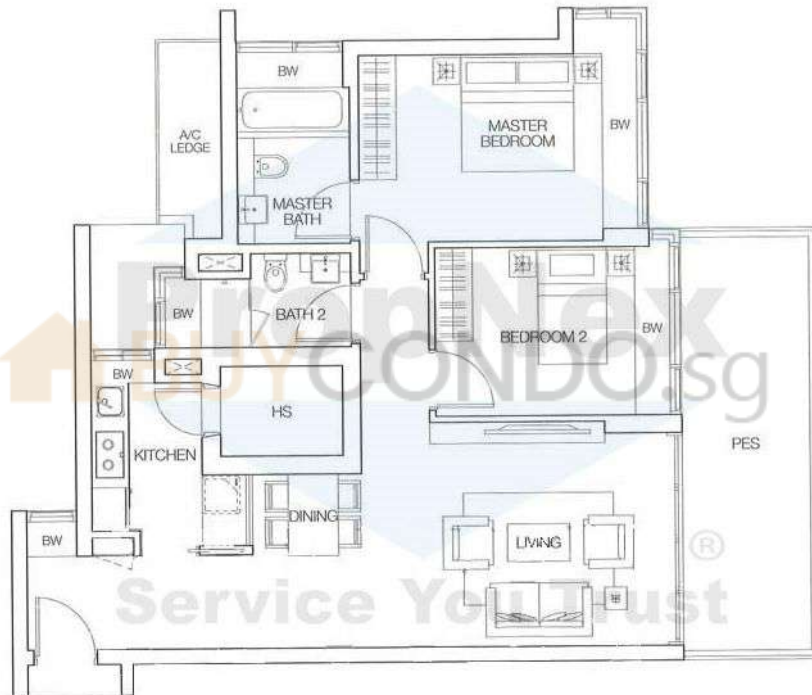
# TYPE A1p

104 sq.m. / 1,119 sq.ft.

Including PES of 16 sq.m.  
#01-18



RIVER



**NOTES:**

Plans are not to scale and subject to any amendment as may be approved by the relevant authorities. All floor areas are approximate and are subject to final survey.

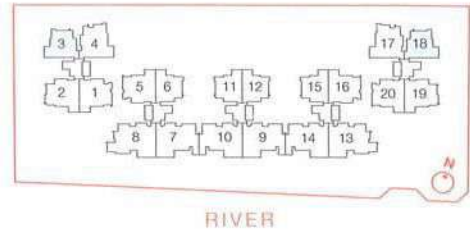
2-BEDROOM

# TYPE A1

97 sq.m. / 1,044 sq.ft.

#03-03 to #18-03

#02-18 to #18-18



**NOTES:**

Plans are not to scale and subject to any amendment as may be approved by the relevant authorities. All floor areas are approximate and are subject to final survey.