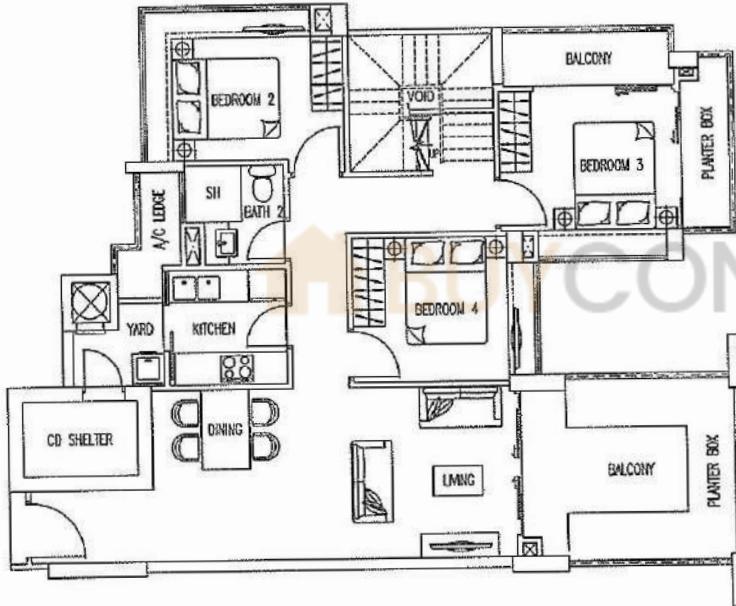
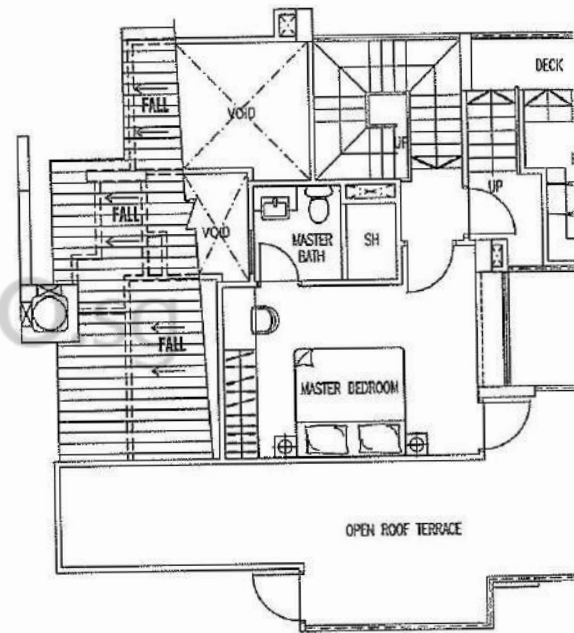


Type A1

(195m² / 2099ft²)



Lower



Upper

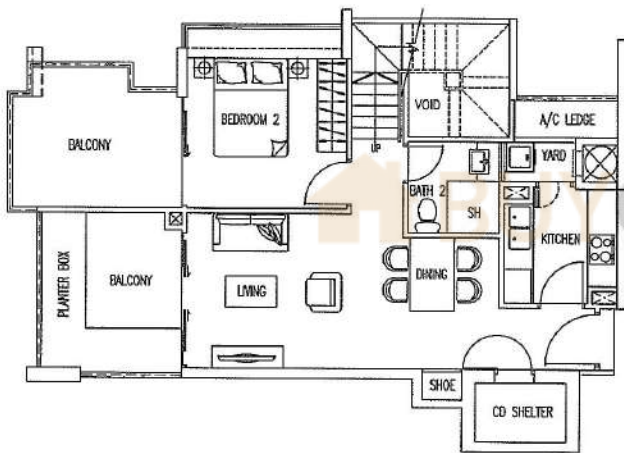
#05-01



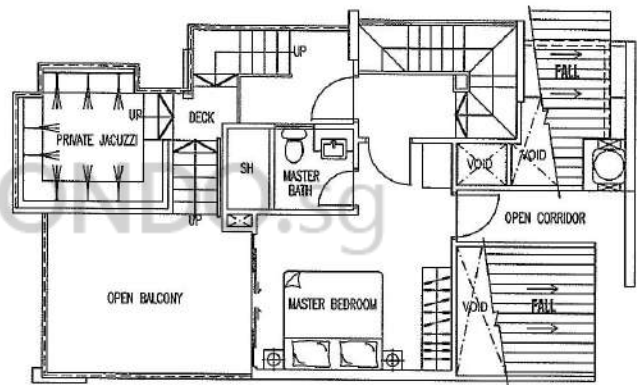
The above plans are subject to changes as may be approved by relevant authorities. Plans are not drawn to scale.

Type D1

(143m² / 1539ft²)

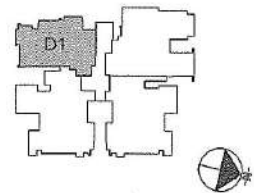


Lower



Upper

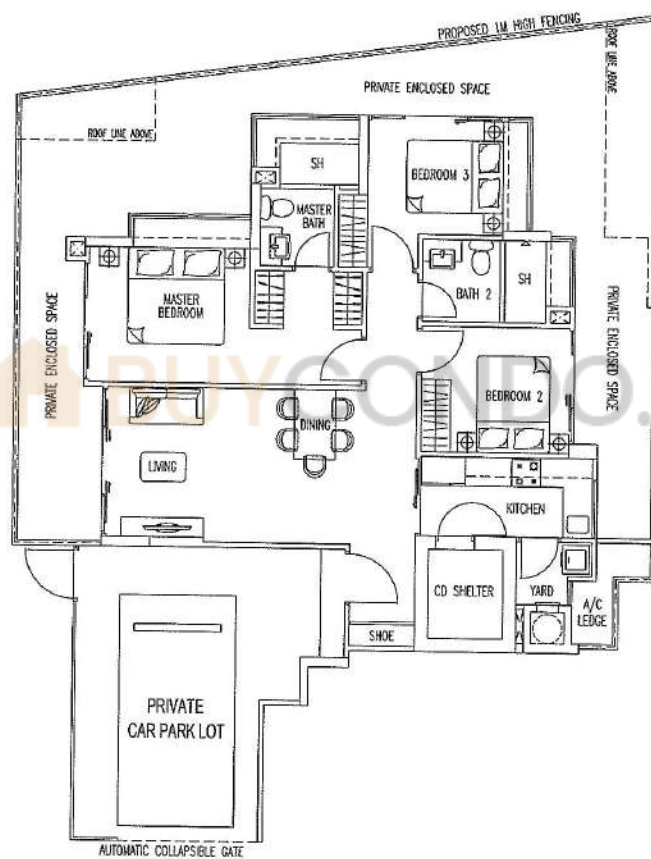
#05-04



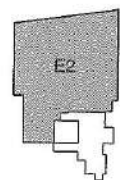
The above plans are subject to changes as may be approved by relevant authorities. Plans are not drawn to scale.

Type E2

(173m² / 1862ft²)



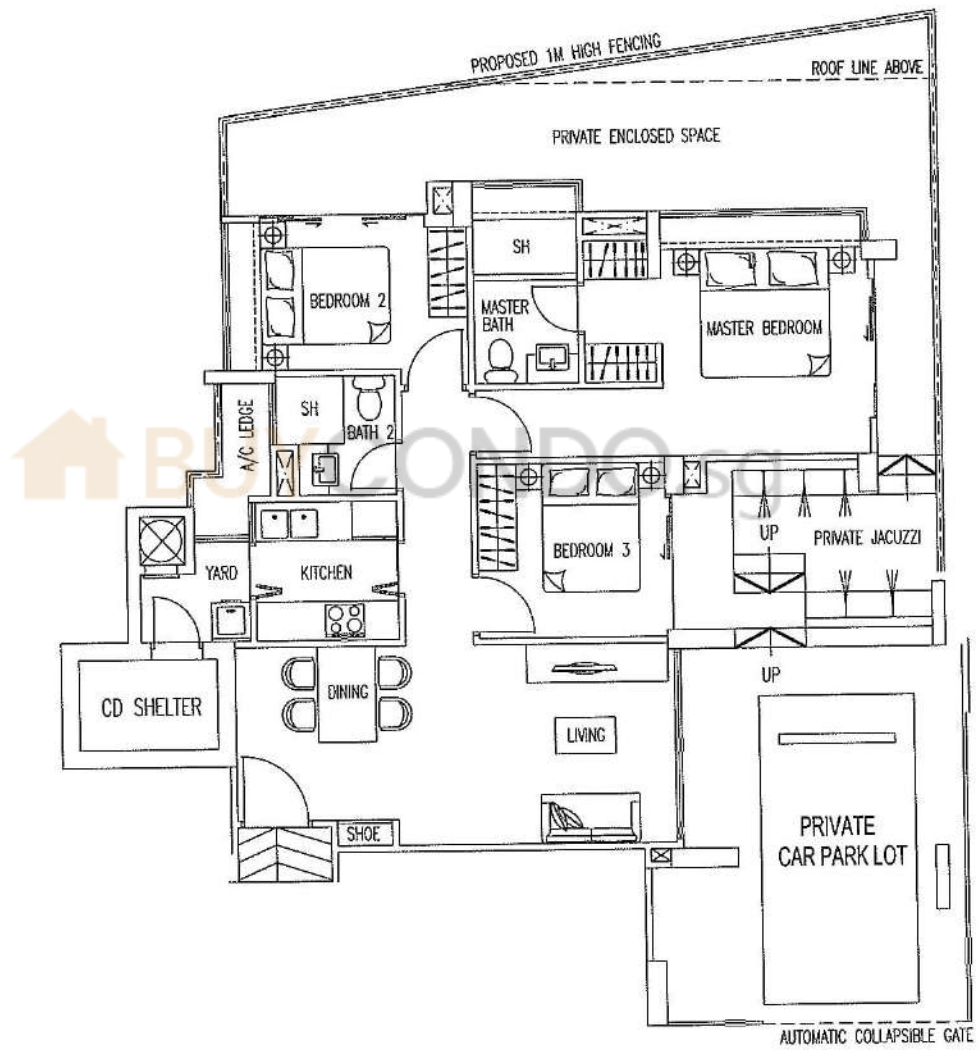
#01-05



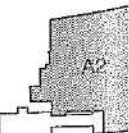
The above plans are subject to changes as may be approved by relevant authorities. Plans are not drawn to scale.

type A2

(155m² / 1668ft²)



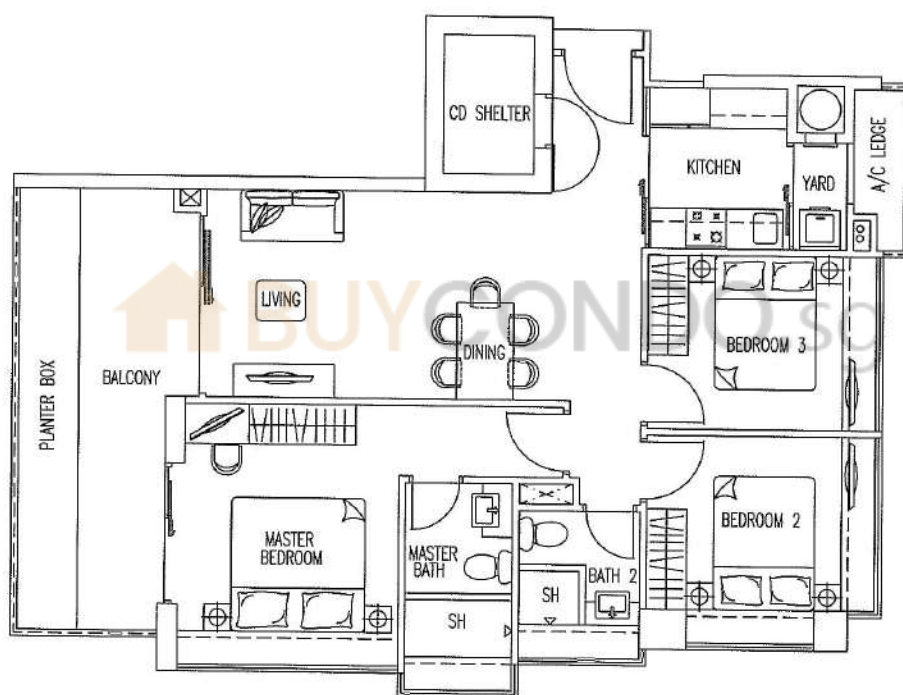
#01-01



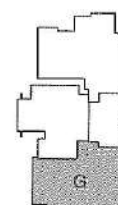
The above elements subject to changes as may be approved by relevant authorities. Plans are not drawn to scale.

Type G

(104m² / 1119ft²)



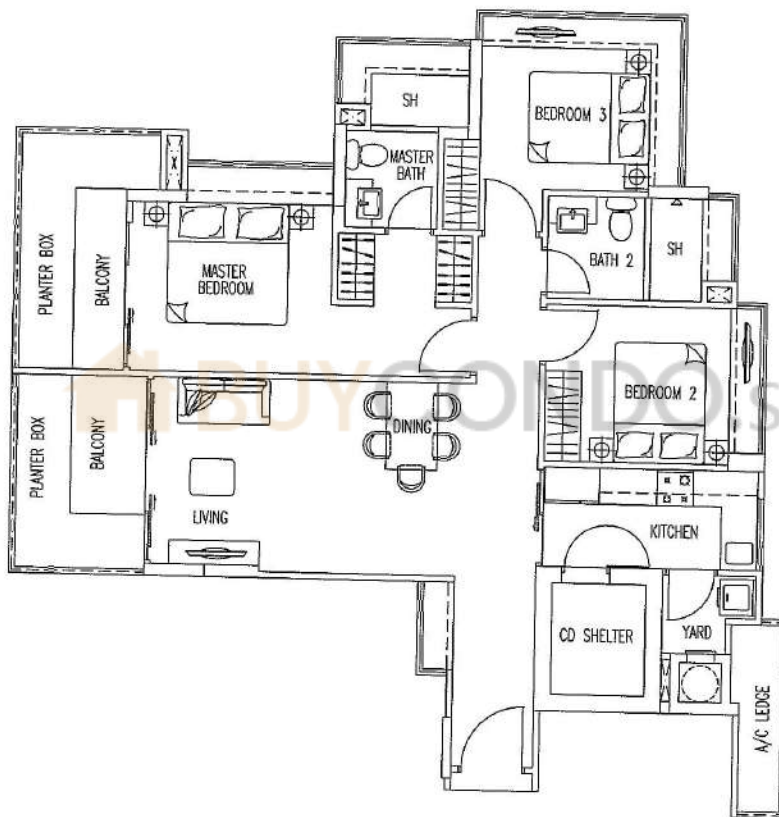
#02-07
#03-07
#04-07



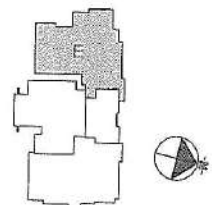
The above plans are subject to changes as may be approved by relevant authorities. Plans are not drawn to scale.

Type E

(112m² / 1206ft²)



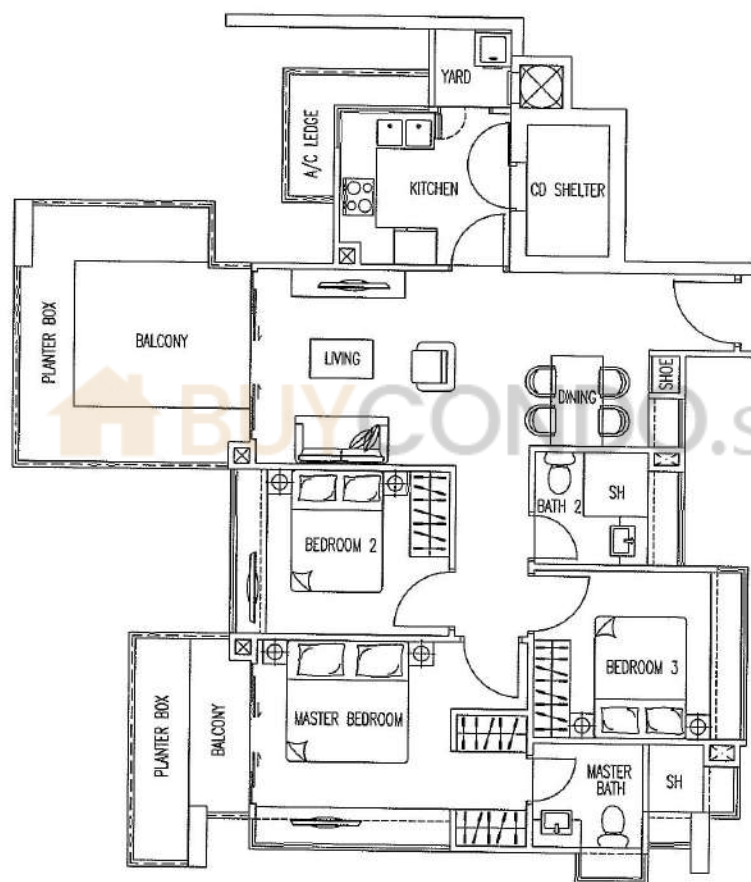
#02-05
#03-05
#04-05



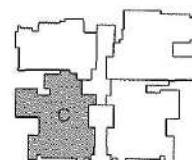
The above plans are subject to changes as may be approved by relevant authorities. Plans are not drawn to scale.

Type C

(113m² / 1216ft²)



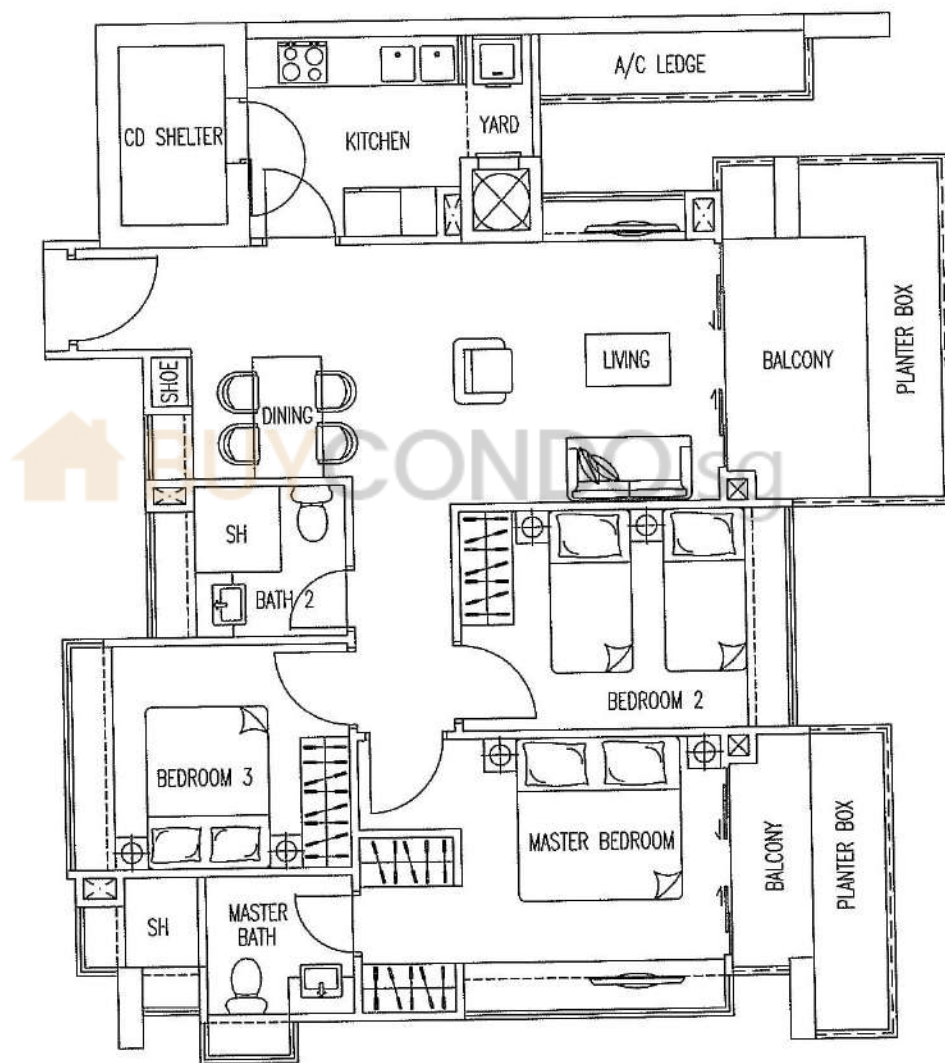
#02-03
#03-03
#04-03



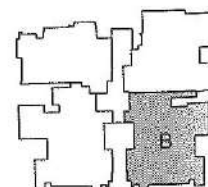
The above plans are subject to changes as may be approved by relevant authorities. Plans are not drawn to scale.

Type B

(111m² / 1195ft²)



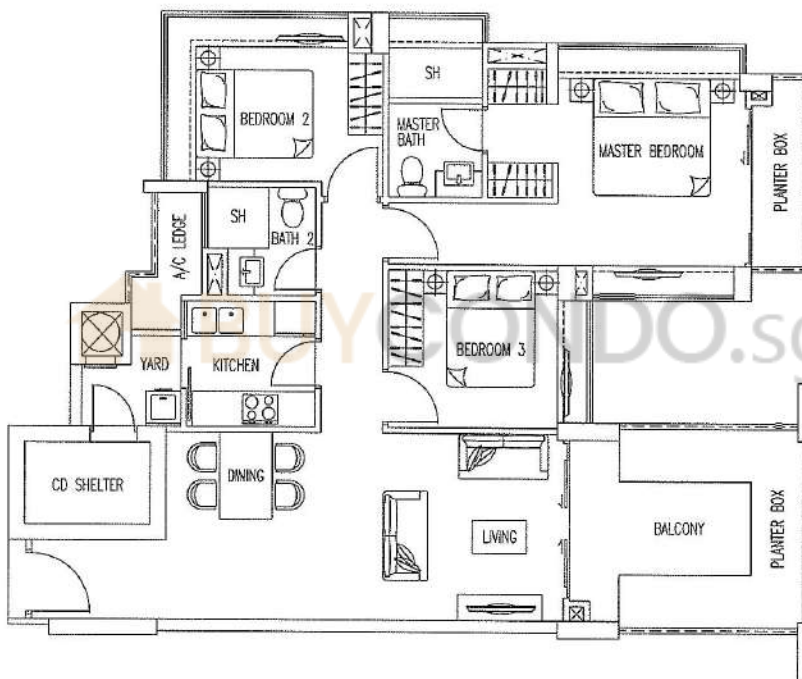
#02-02
#03-02
#04-02



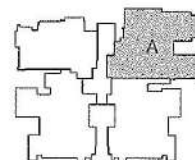
... .. Plans are not drawn to scale

Type A

(113m² / 1216ft²)



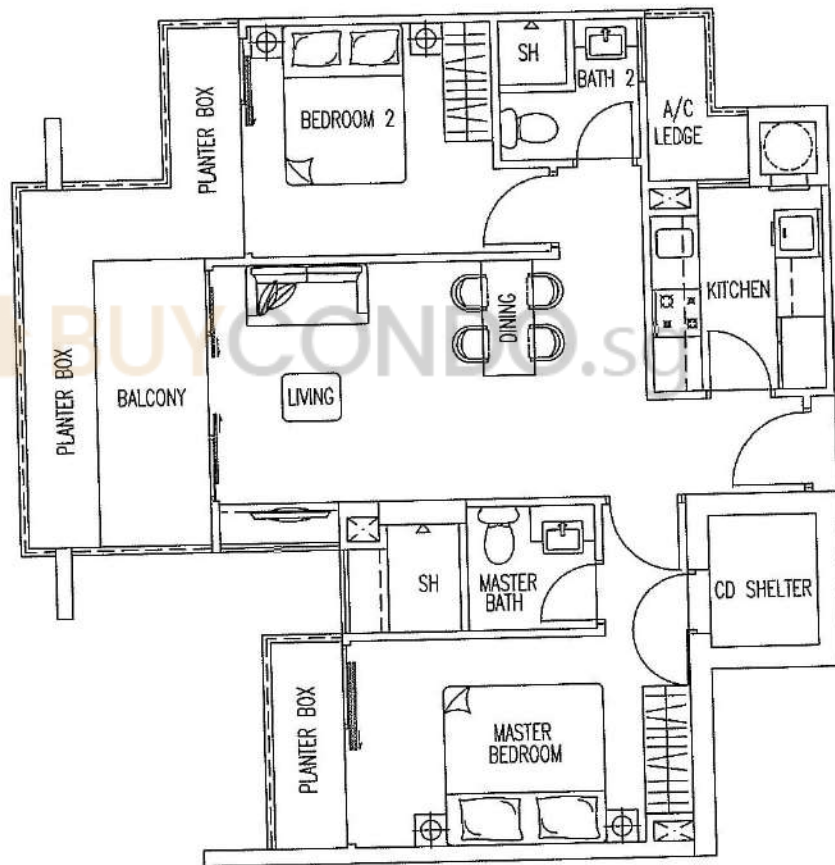
- #02-01
- #03-01
- #04-01



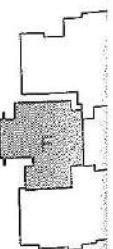
The above plans are subject to changes as may be approved by relevant authorities. Plans are not drawn to scale.

Type F

(82m² / 883ft²)

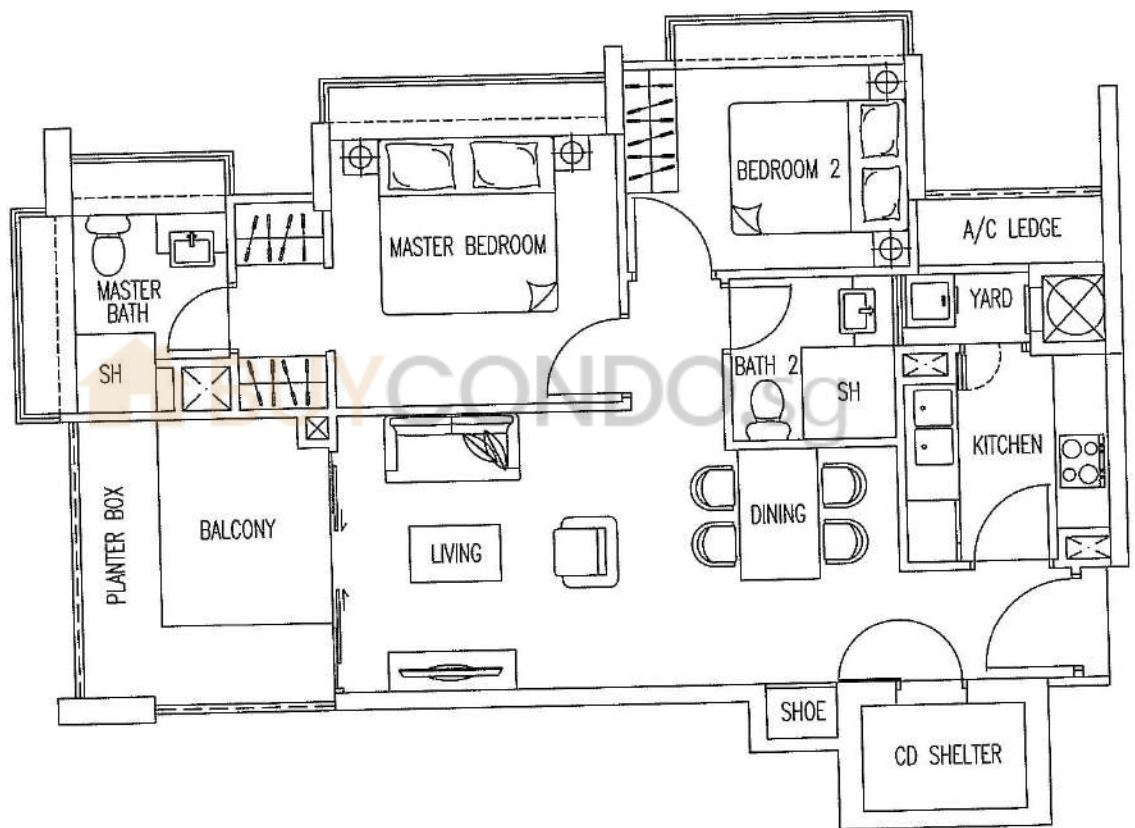


- #02-06
- #03-06
- #04-06
- #05-06

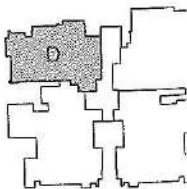


Type D

(83m² / 893ft²)



#02-04
#03-04
#04-04



The above plans are subject to changes as may be approved by relevant authorities. Plans are not drawn to scale.