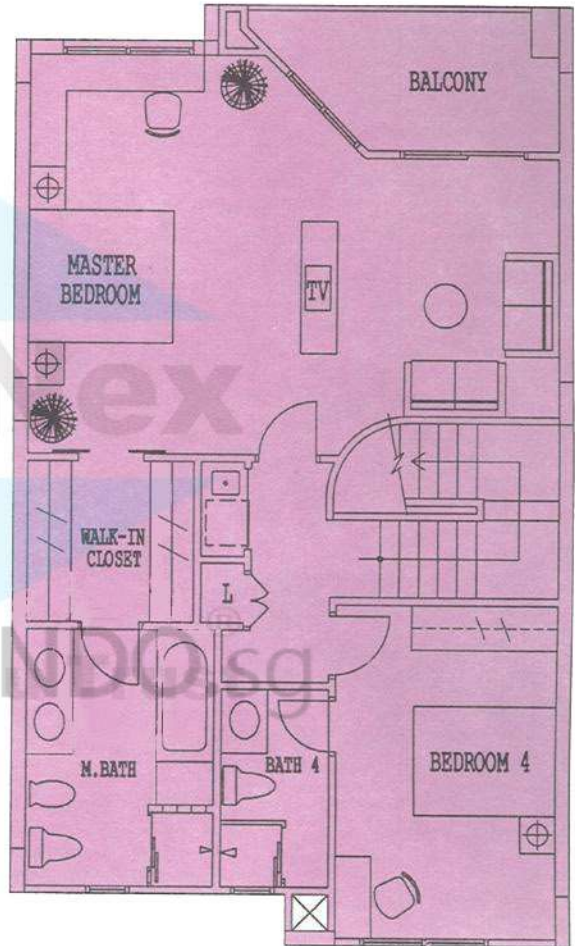
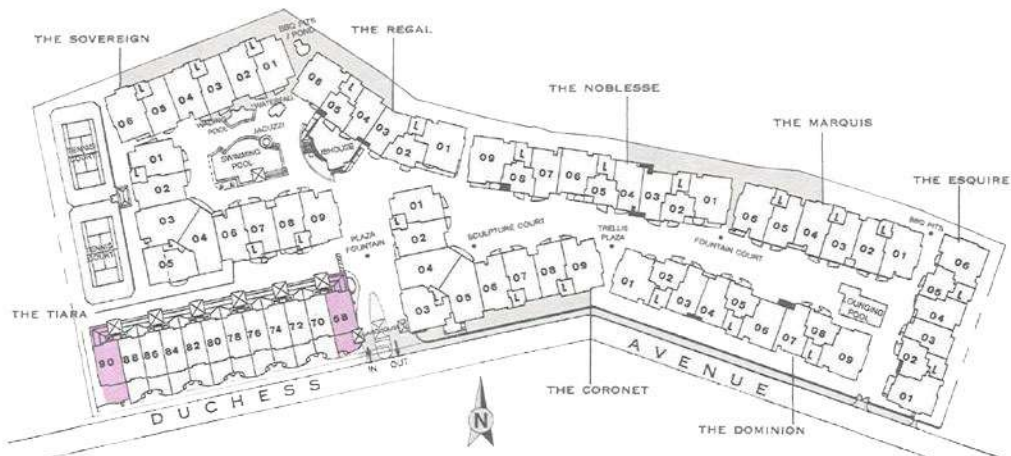


2ND STOREY



3RD STOREY

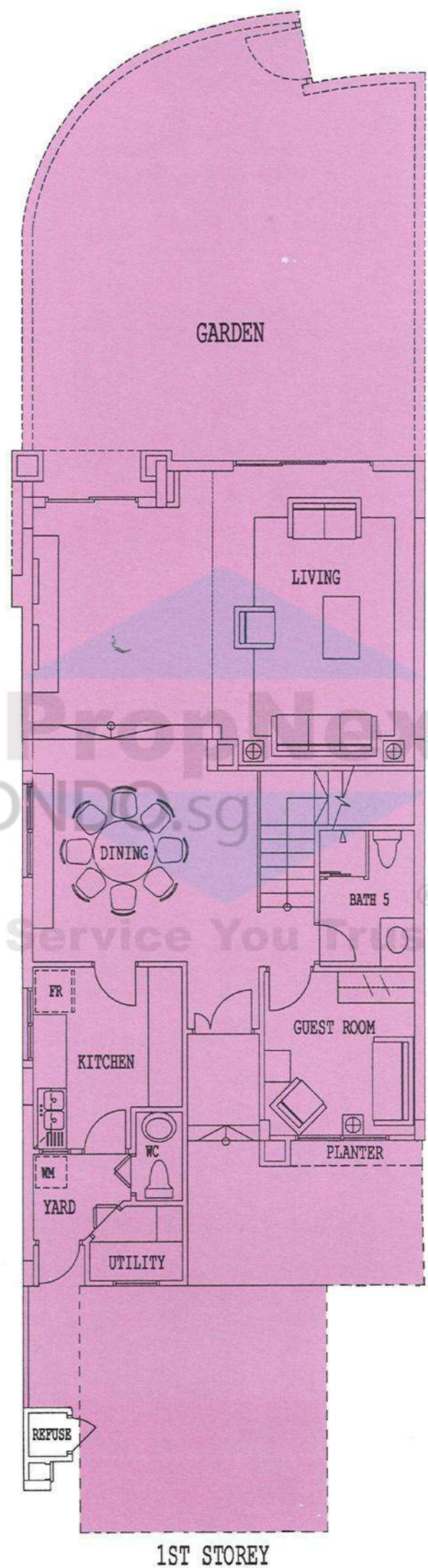


Type T3

Guide to major areas

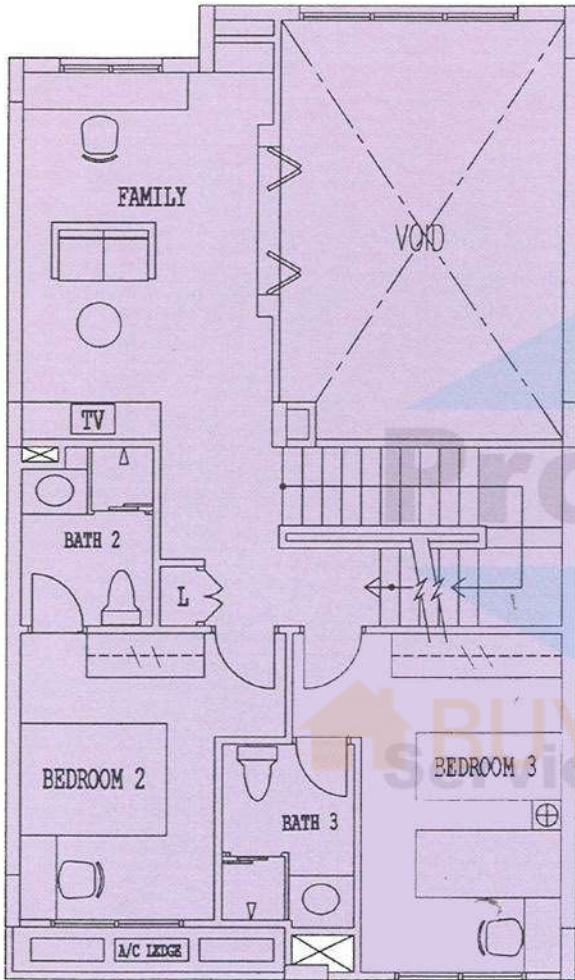
Approx. sq ft

Living/Dining	623
Master Bedroom	424
Bedroom 2	124
Bedroom 3	149
Bedroom 4	152
Guest Room	98
Family	179
Kitchen	101
Garden	657
Estimated area	4263
<i>(inclusive of balcony, void and others)</i>	

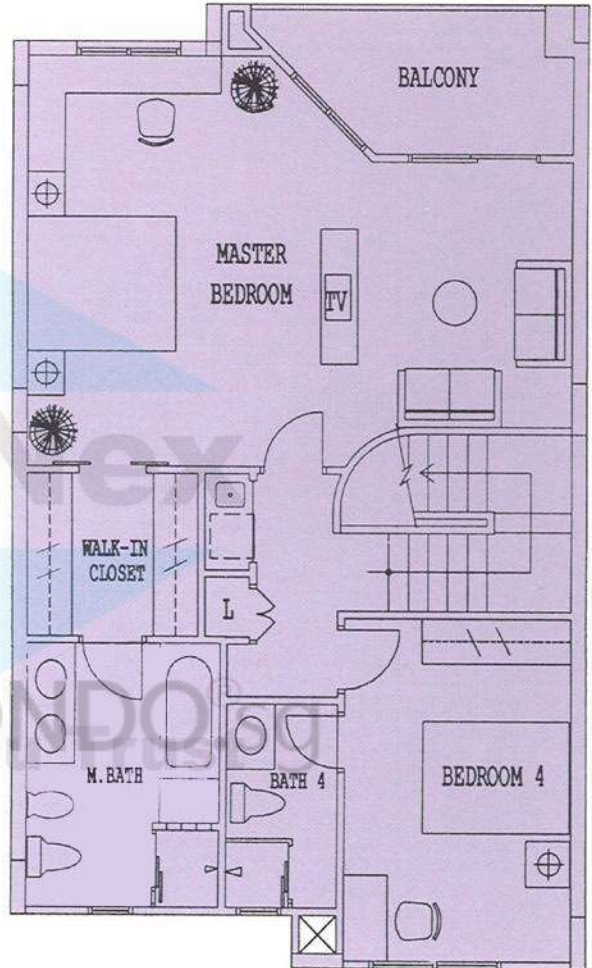


BUYCONDO.sg
Service You Trust

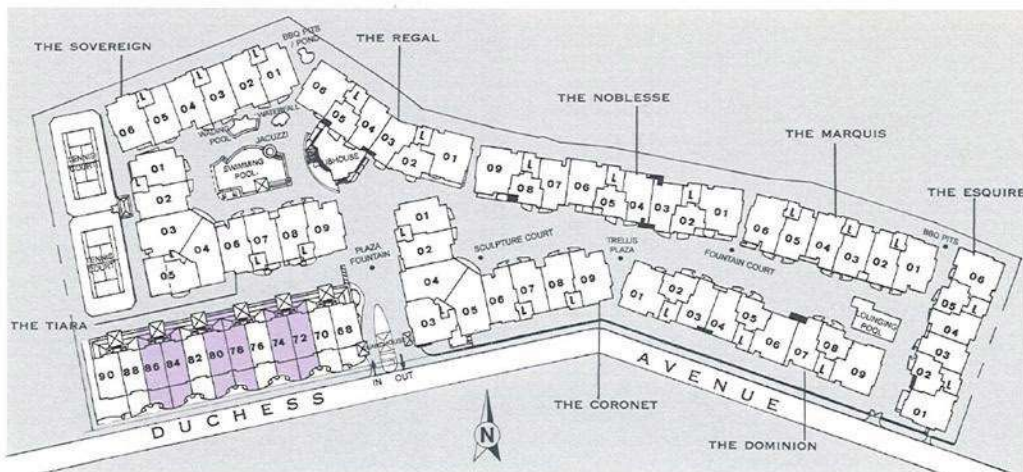
1ST STOREY



2ND STOREY



3RD STOREY

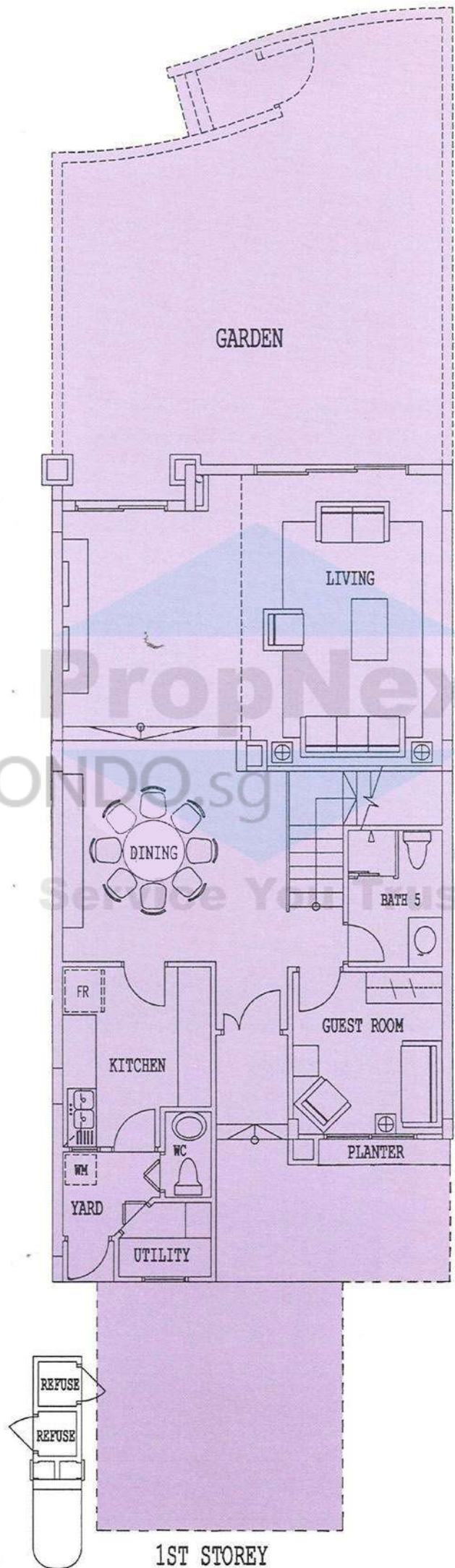


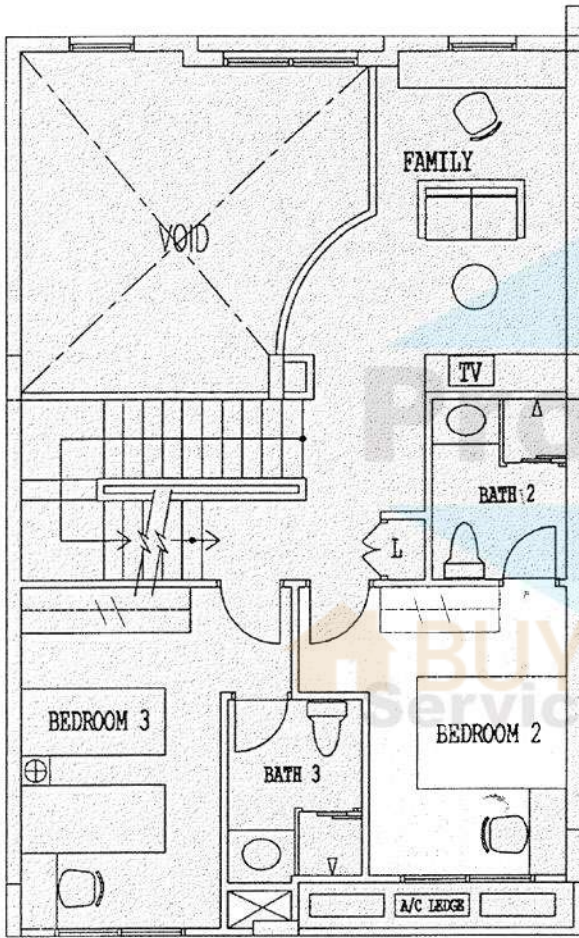
Type T2

Guide to major areas

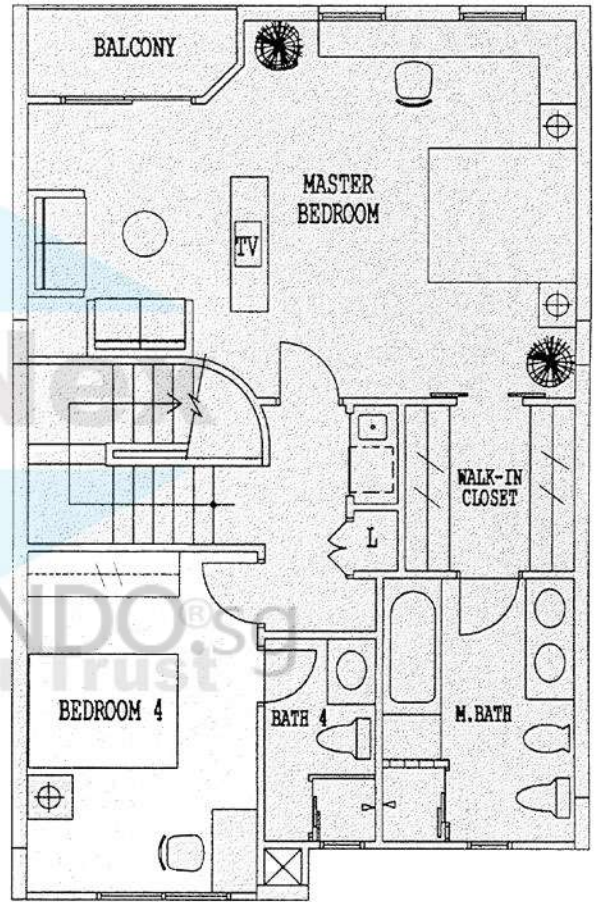
Approx. sq ft

Living/Dining	623
Master Bedroom	424
Bedroom 2	124
Bedroom 3	149
Bedroom 4	152
Guest Room	98
Family	179
Kitchen	101
Garden	657
Estimated area	4209
<i>(inclusive of balcony, void and others)</i>	

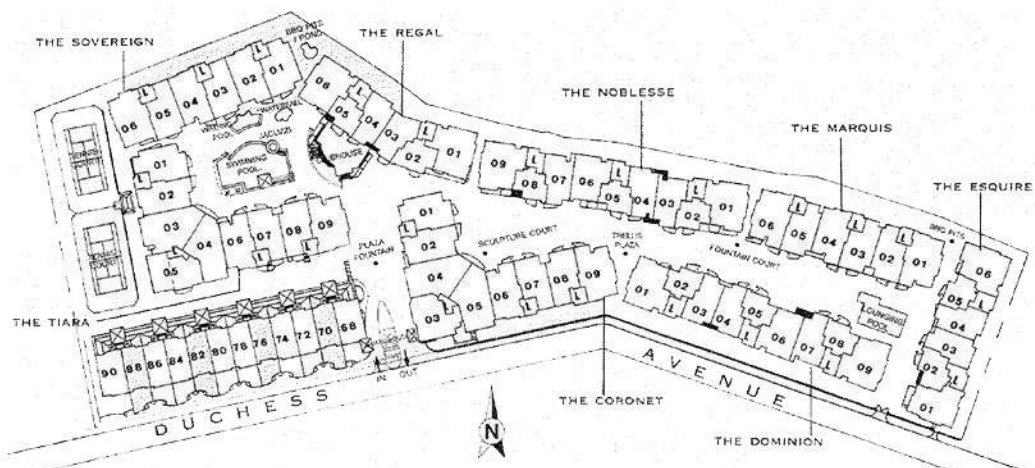




2ND STOREY



3RD STOREY

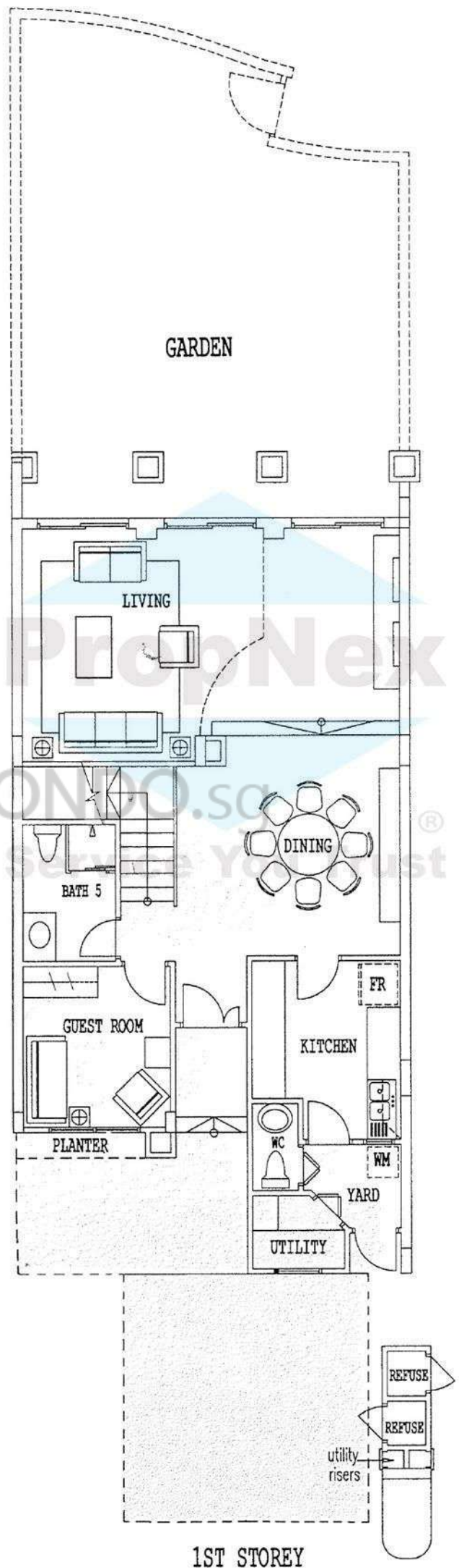


Type T1

Guide to major areas

Approx. sq ft

Living/Dining	557
Master Bedroom	409
Bedroom 2	124
Bedroom 3	149
Bedroom 4	152
Guest Room	98
Family	148
Kitchen	101
Garden	732
Estimated area	4090
<i>(inclusive of balcony, void and others)</i>	





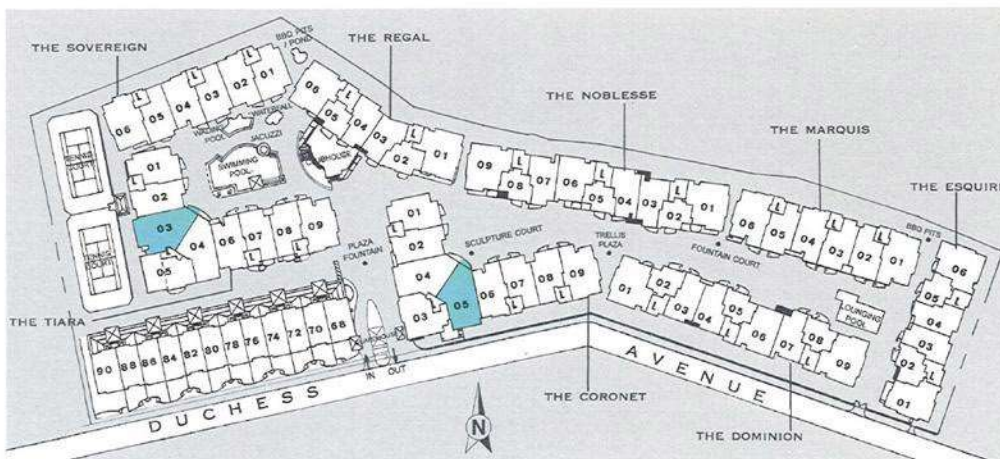
Type E2(b)

Guide to major areas

Approx. sq ft

Living/Dining	537
Master Bedroom	246
Bedroom 2	145
Bedroom 3	155
Bedroom 4	128
Kitchen	111
Family	165
Balcony	54
Others	547
TOTAL	2088

Total floor area on the first storey with PES is 2260 sq ft



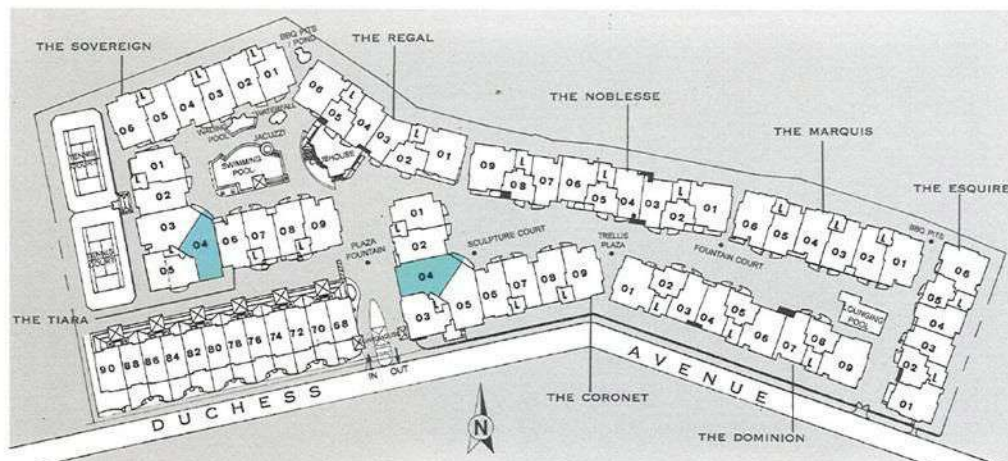
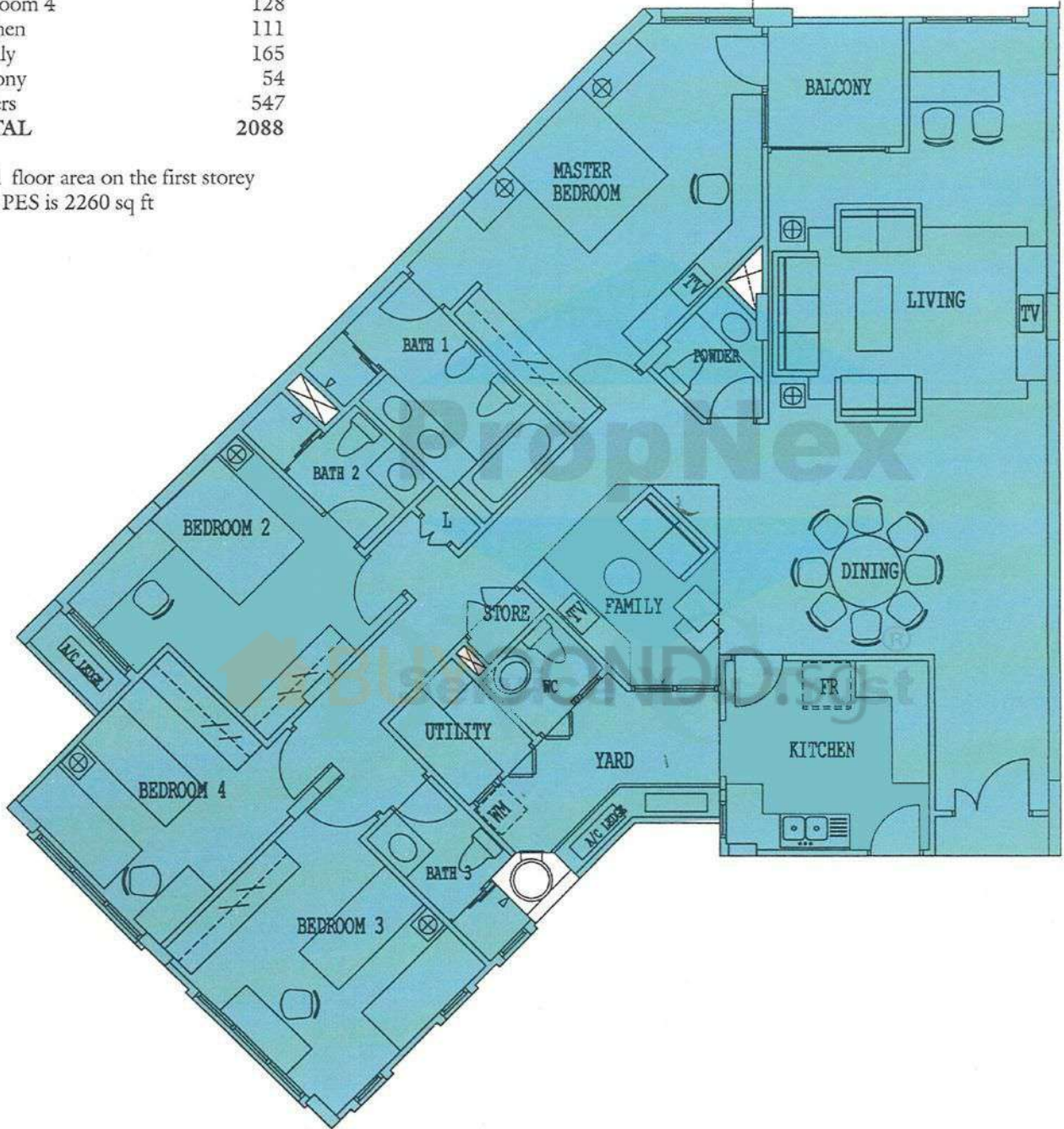
Type E1(b)

Guide to major areas

Approx. sq ft

Living/Dining	537
Master Bedroom	246
Bedroom 2	145
Bedroom 3	155
Bedroom 4	128
Kitchen	111
Family	165
Balcony	54
Others	547
TOTAL	2088

Total floor area on the first storey with PES is 2260 sq ft



While every reasonable care has been taken in preparing these floor plans, the developer and its agents cannot be held responsible for any inaccuracies. All plans are subject to any amendment approved or as may be approved by the relevant authority. Floor areas are approximate measurements and subject to final survey.

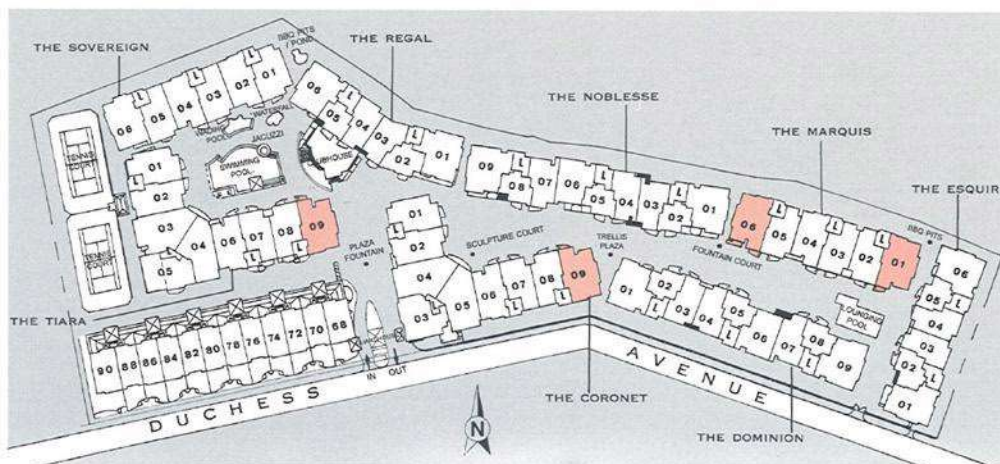
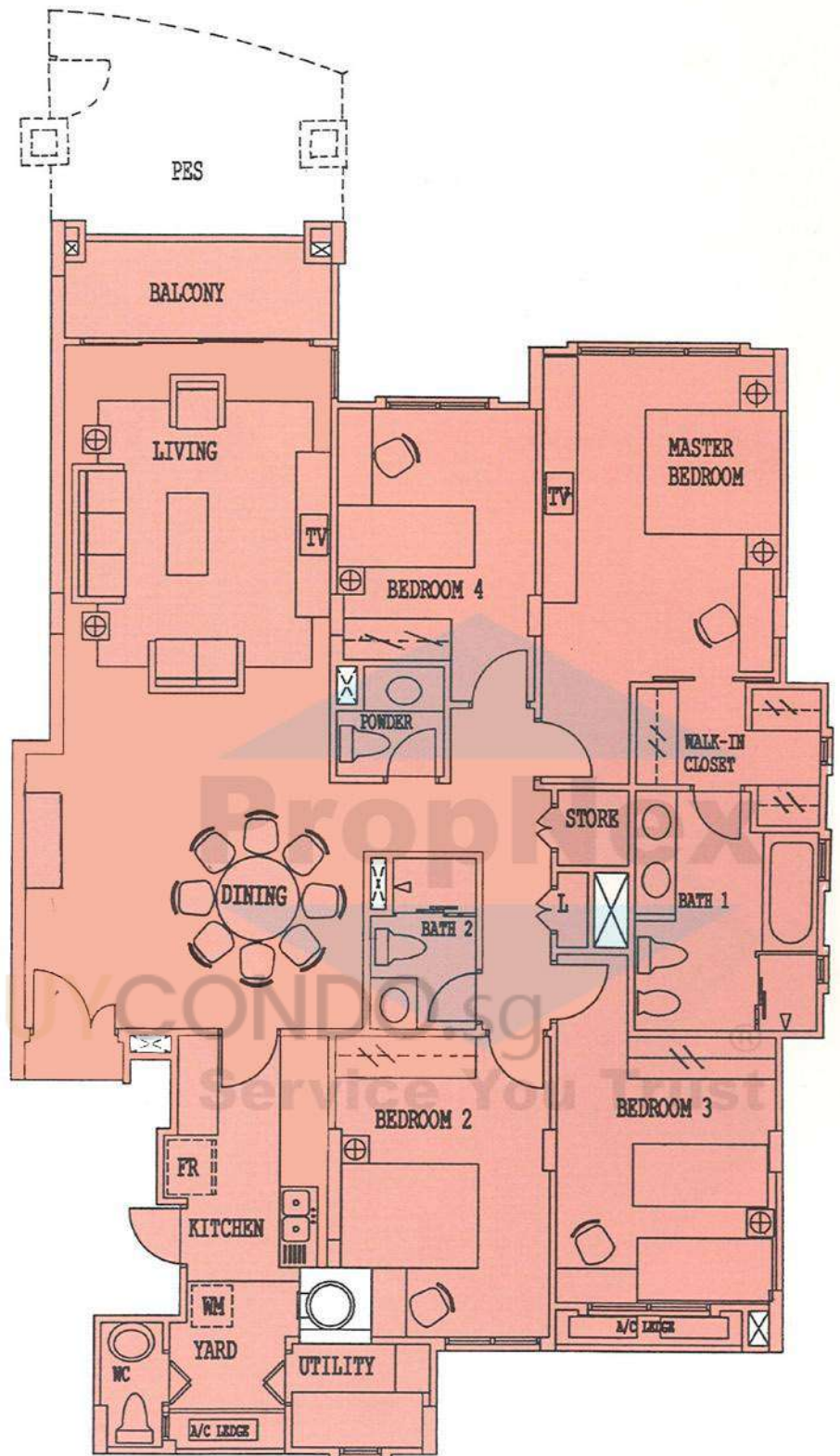
Type D6(b)

Guide to major areas

Approx. sq ft

Living/Dining	525
Master Bedroom	236
Bedroom 2	137
Bedroom 3	144
Bedroom 4	120
Kitchen	85
Balcony	64
Others	422
TOTAL	1733

Total floor area on the first storey with PES is 1884 sq ft



While every reasonable care has been taken in preparing these floor plans, the developer and its agents cannot be held responsible for any inaccuracies. All plans are subject to any amendment approved or as may be approved by the relevant authority. Floor areas are approximate measurements and subject to final survey.

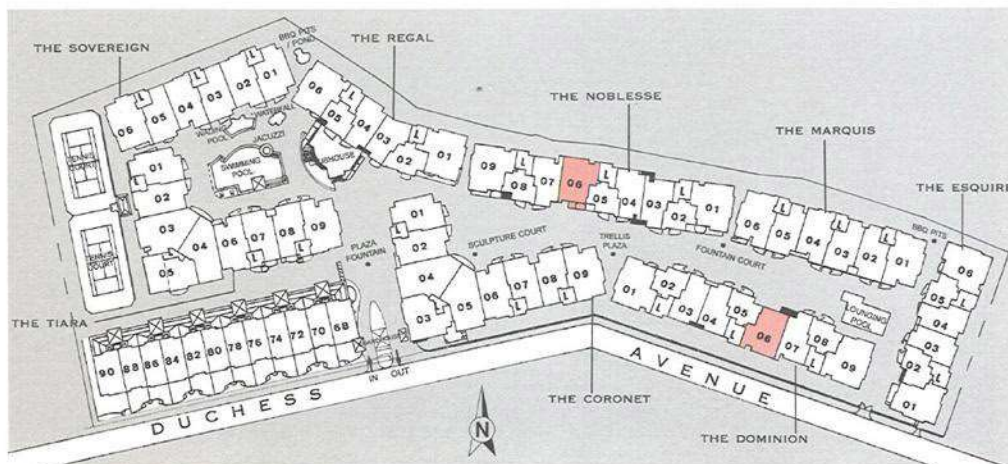
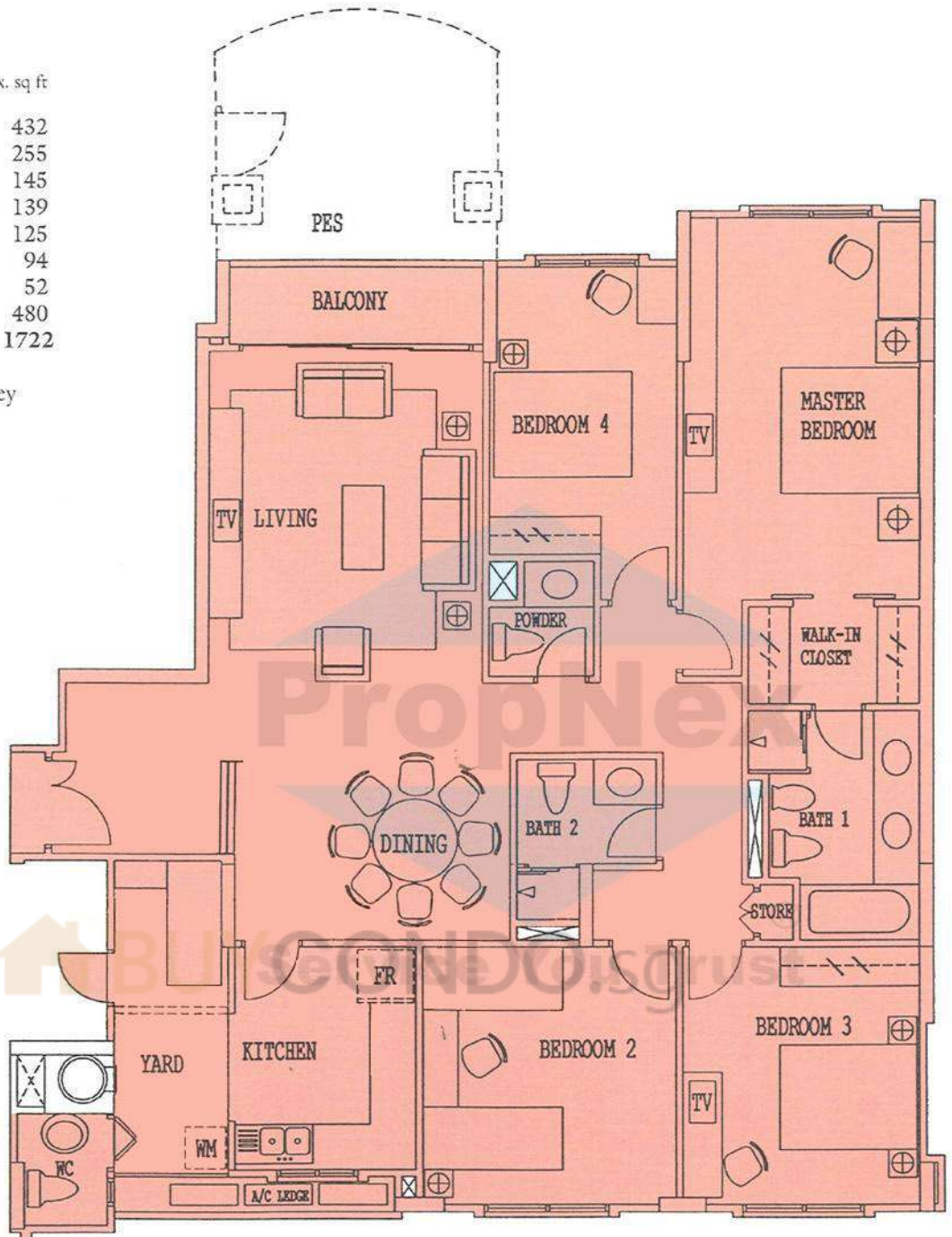
Type D5(b)

Guide to major areas

Approx. sq ft

Living/Dining	432
Master Bedroom	255
Bedroom 2	145
Bedroom 3	139
Bedroom 4	125
Kitchen	94
Balcony	52
Others	480
TOTAL	1722

Total floor area on the first storey with PES is 1862 sq ft



While every reasonable care has been taken in preparing these floor plans, the developer and its agents cannot be held responsible for any inaccuracies. All plans are subject to any amendment approved or as may be approved by the relevant authority. Floor areas are approximate measurements and subject to final survey.

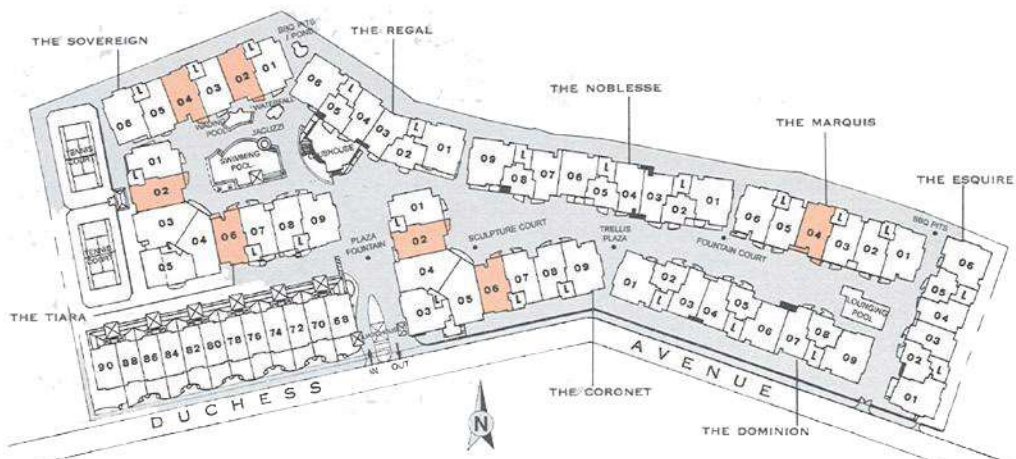
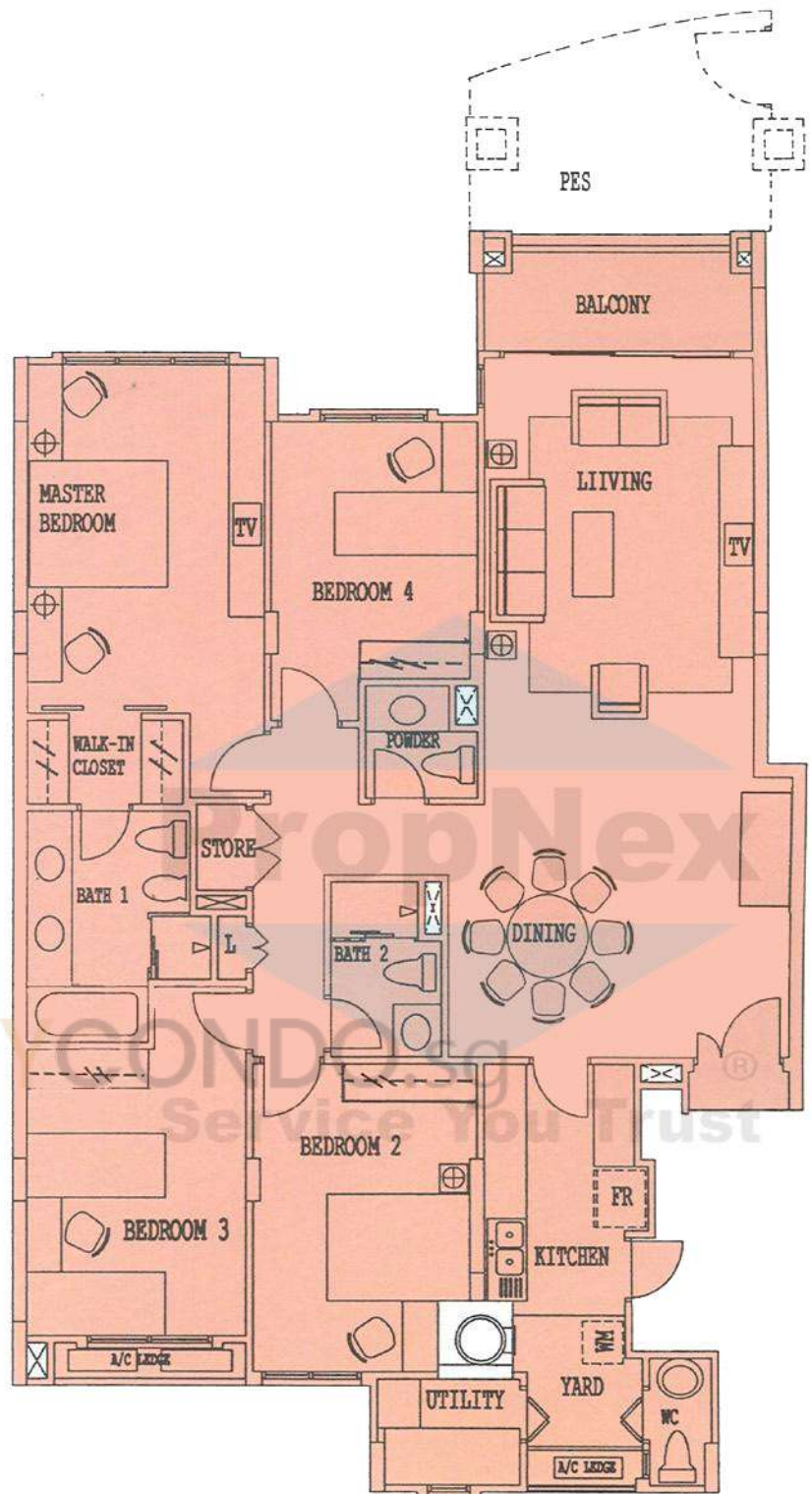
Type D4(b)

Guide to major areas

Approx. sq ft

Living/Dining	461
Master Bedroom	224
Bedroom 2	133
Bedroom 3	150
Bedroom 4	120
Kitchen	83
Balcony	64
Others	476
TOTAL	1711

Total floor area on the first storey with PES is 1841 sq ft



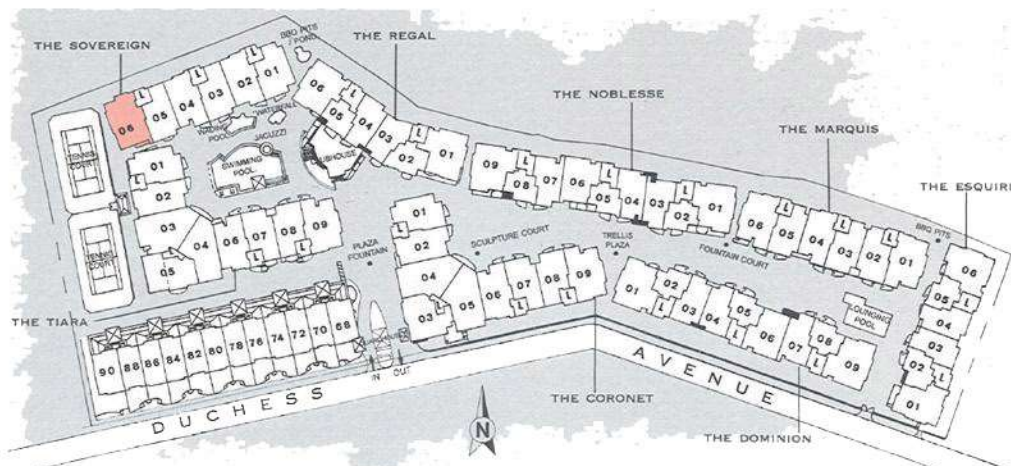
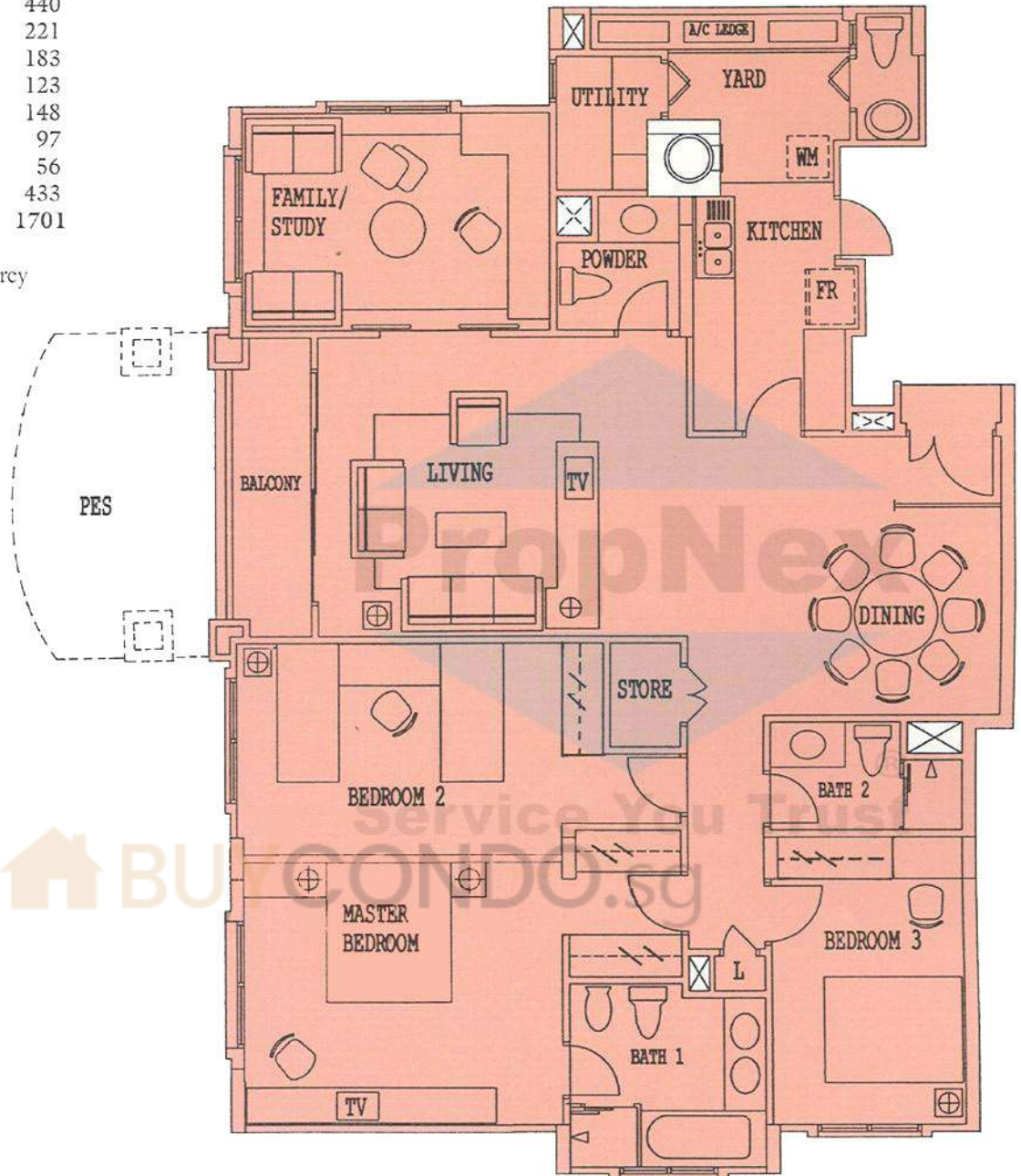
Type D2(b)

Guide to major areas

Approx. sq ft

Living/Dining	440
Master Bedroom	221
Bedroom 2	183
Bedroom 3	123
Family/Study	148
Kitchen	97
Balcony	56
Others	433
TOTAL	1701

Total floor area on the first storey with PES is 1841 sq ft



While every reasonable care has been taken in preparing these floor plans, the developer and its agents cannot be held responsible for any inaccuracies. All plans are subject to any amendment approved or as may be approved by the relevant authority. Floor areas are approximate measurements and subject to final survey.

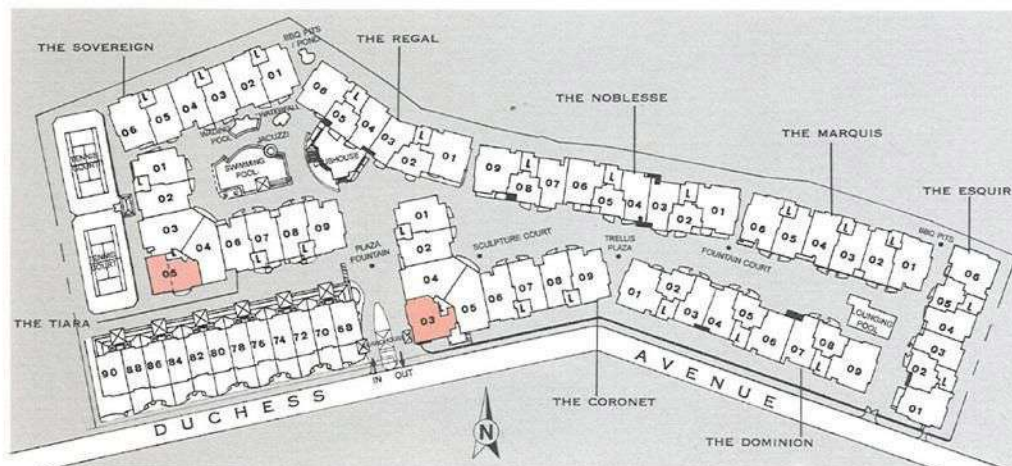
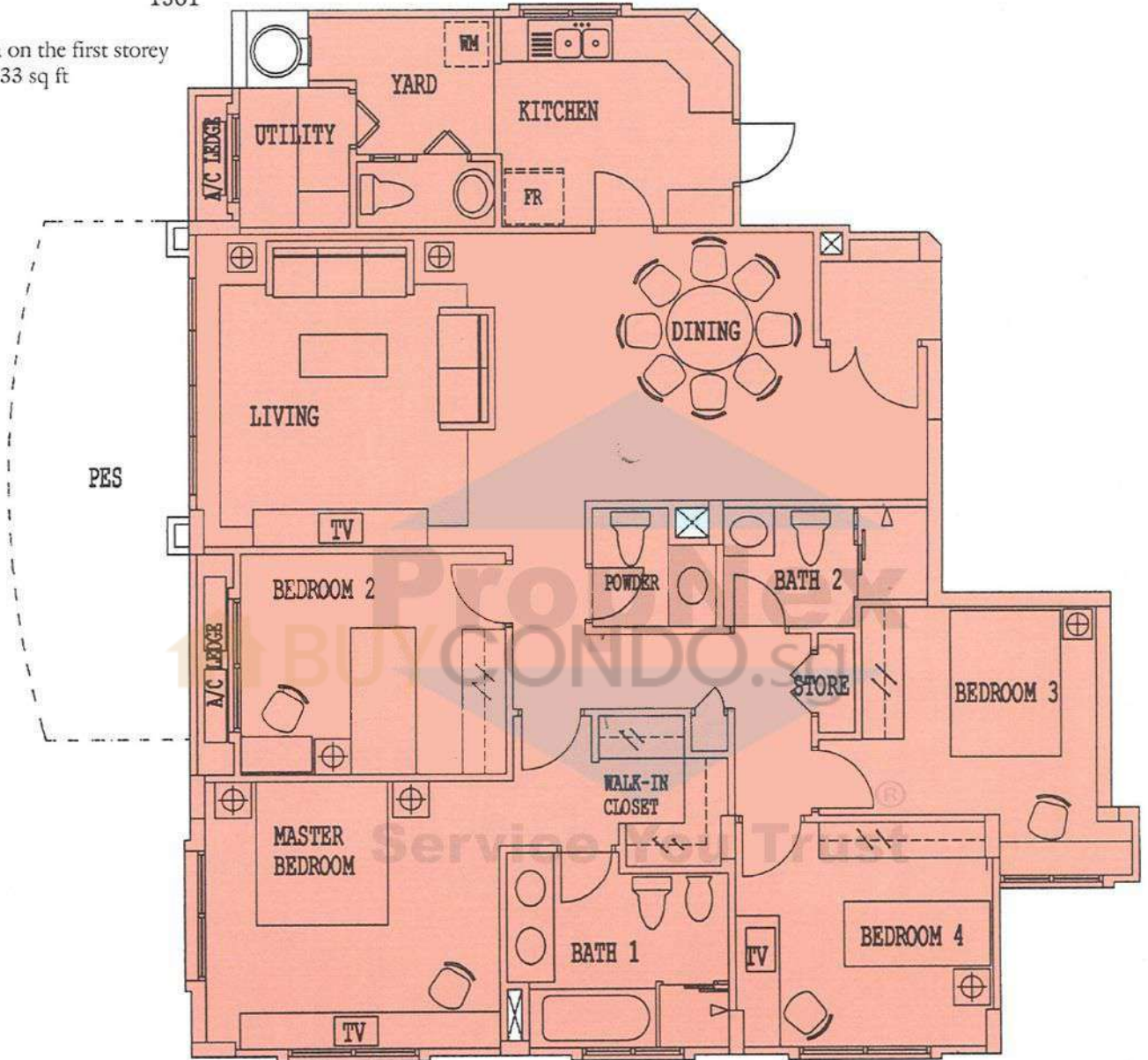
Type D1

Guide to major areas

Approx. sq ft

Living/Dining	404
Master Bedroom	220
Bedroom 2	117
Bedroom 3	136
Bedroom 4	125
Kitchen	97
Others	462
TOTAL	1561

Total floor area on the first storey with PES is 1733 sq ft



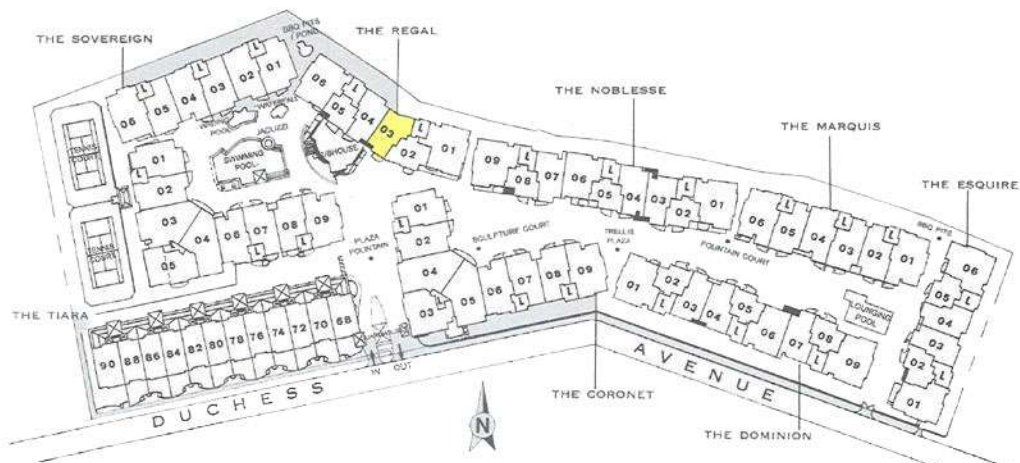
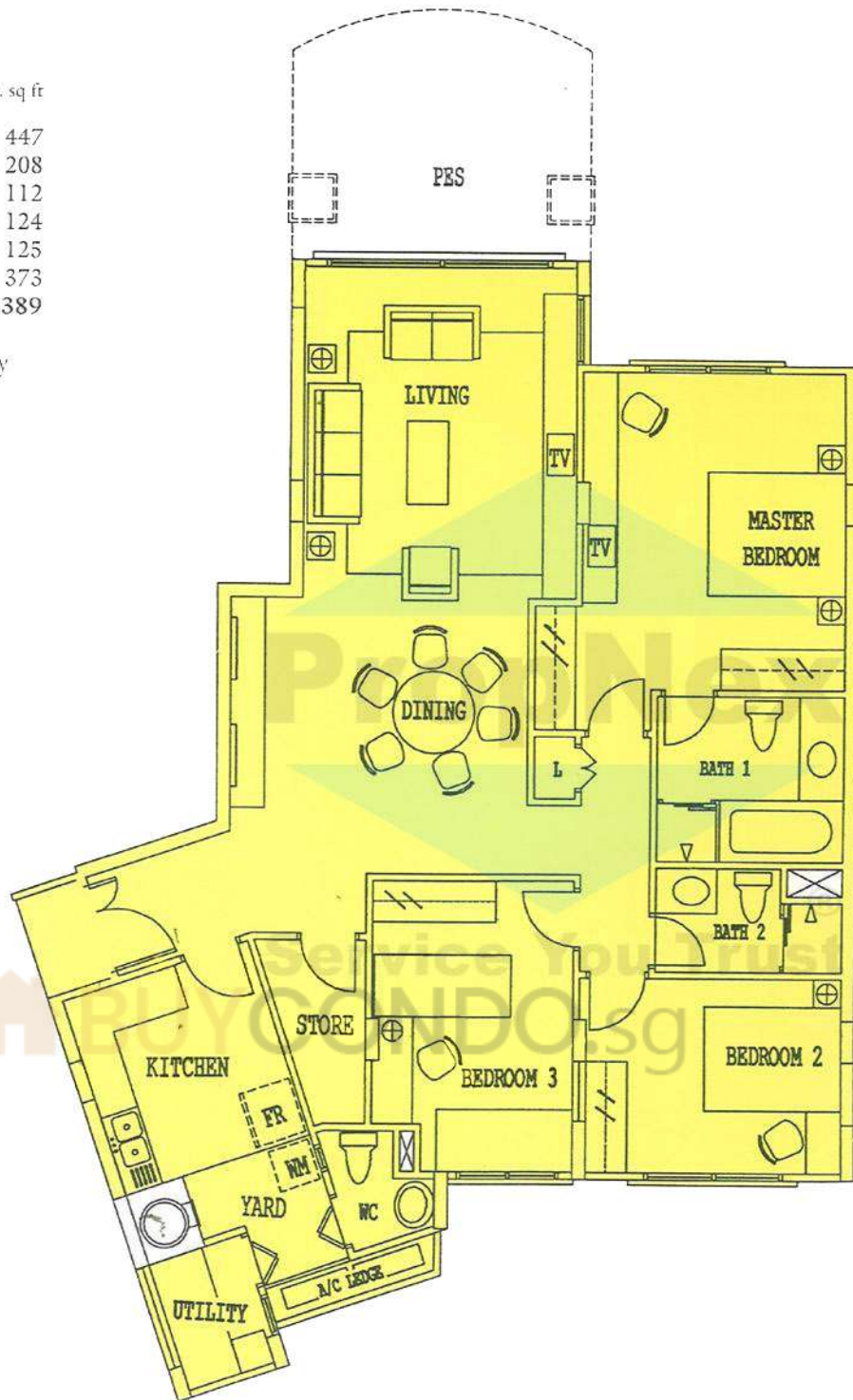
Type C4

Guide to major areas

Approx. sq ft

Living/Dining	447
Master Bedroom	208
Bedroom 2	112
Bedroom 3	124
Kitchen	125
Others	373
TOTAL	1389

Total floor area on the first storey with PES is 1539 sq ft



While every reasonable care has been taken in preparing these floor plans, the developer and its agents cannot be held responsible for any inaccuracies. All plans are subject to any amendment approved or as may be approved by the relevant authority. Floor areas are approximate measurements and subject to final survey.

Type C3

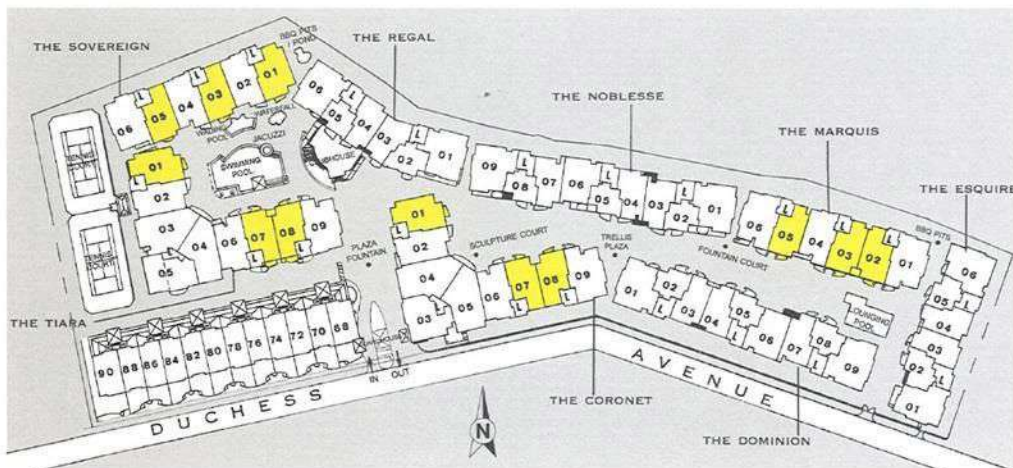
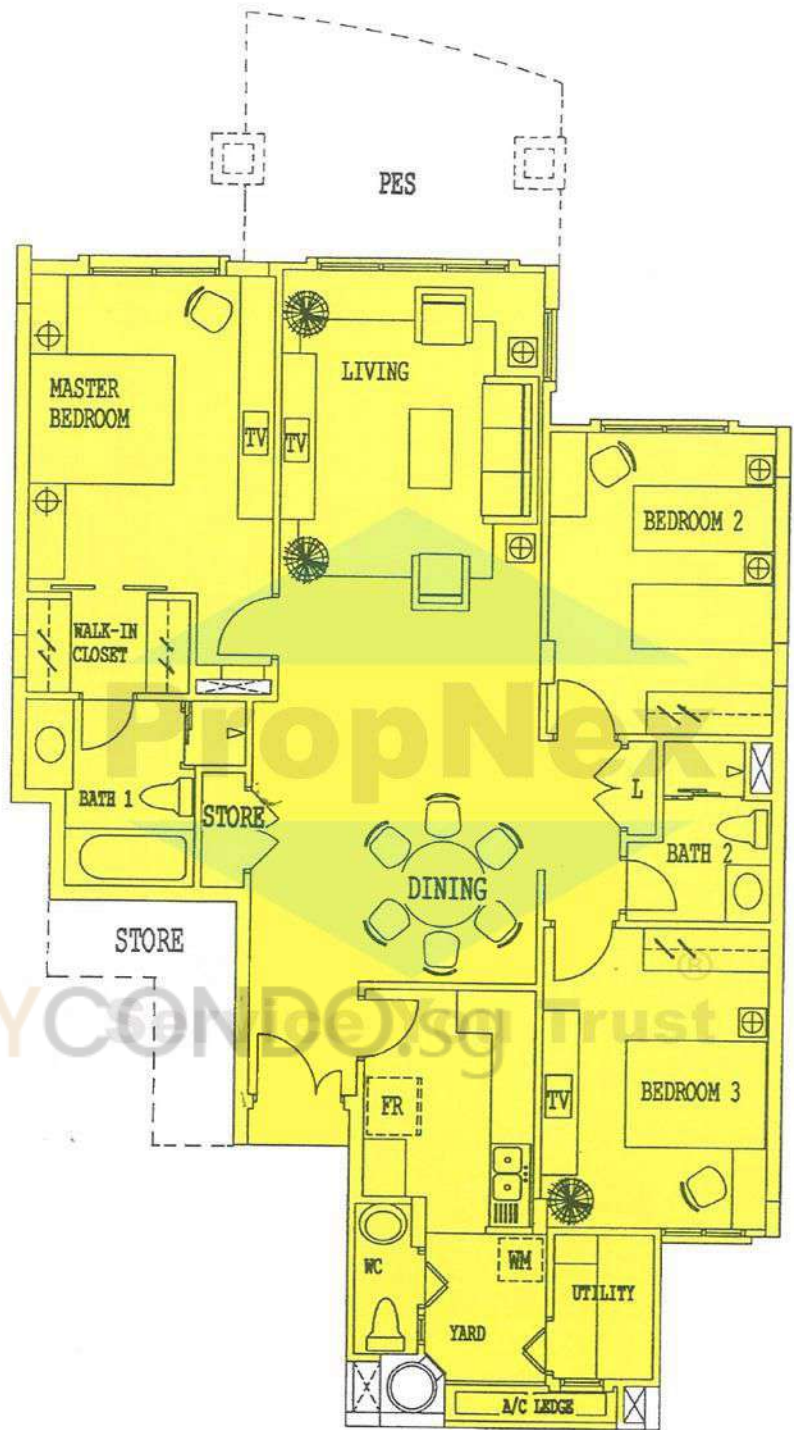
Guide to major areas

Approx. sq ft

Living/Dining	447
Master Bedroom	204
Bedroom 2	144
Bedroom 3	144
Kitchen	83
Others	345/356
TOTAL (typical)	1367/1378*

* Except the following units :

The Coronet	
#01-01 with PES	1593
#01-07/08 with PES	1582
The Marquis	
#01-02/03/05 with PES	1582
The Sovereign	
#01-01 with PES	1593
#01-03/05 with PES	1582
The Tiara	
#01-01 with PES	1593
#01-07/08 with PES	1582



While every reasonable care has been taken in preparing these floor plans, the developer and its agents cannot be held responsible for any inaccuracies. All plans are subject to any amendment approved or as may be approved by the relevant authority. Floor areas are approximate measurements and subject to final survey.

Type C2

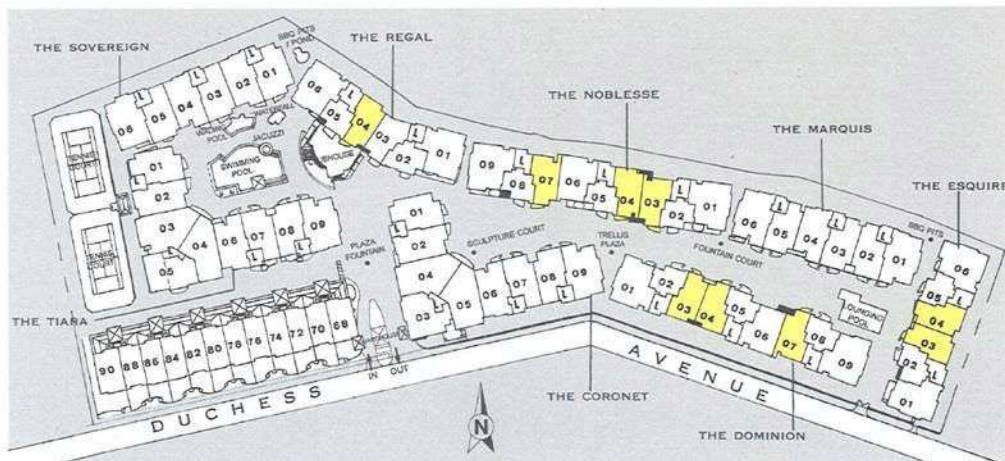
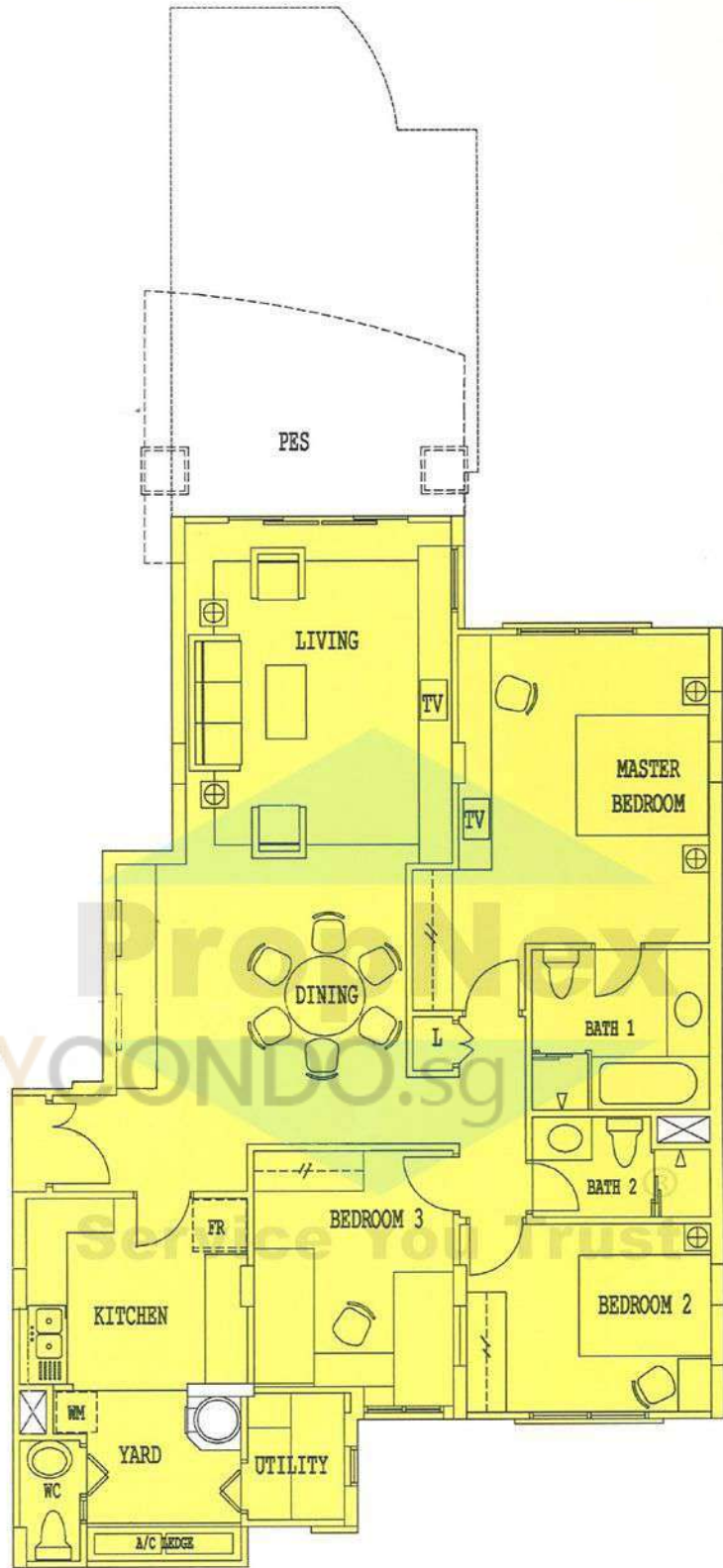
Guide to major areas

Approx. sq ft

Living/Dining	446
Master Bedroom	214
Bedroom 2	113
Bedroom 3	117
Kitchen	96
Others	360
TOTAL	1346*

* Except the following units :

The Dominion	
#01-03/04/07 with PES	1496
The Esquire	
#01-03/04 with PES	1496
The Noblesse	
#01-03/04/07 with PES	1496
The Regal	
#01-04 with PES	1711

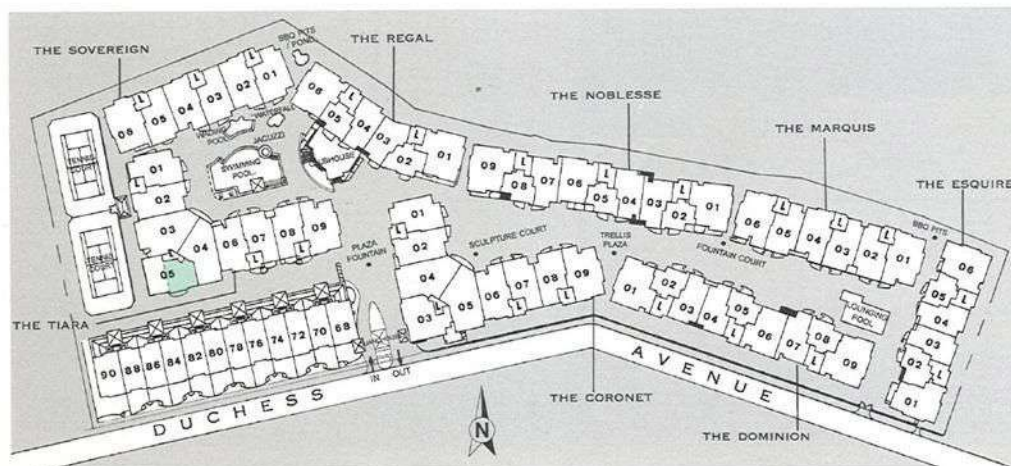
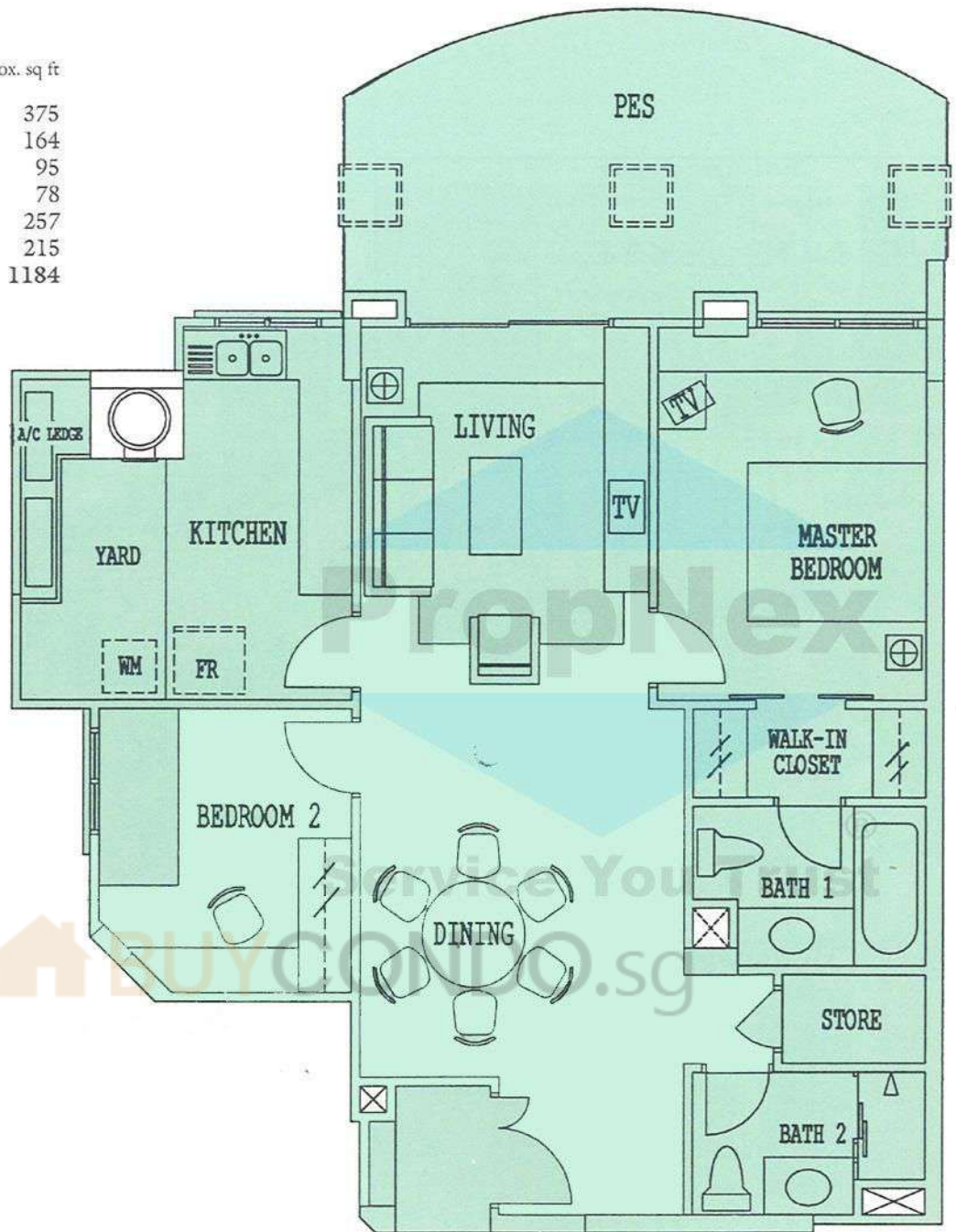


Type B3(p)

Guide to major areas

Approx. sq ft

Living/Dining	375
Master Bedroom	164
Bedroom 2	95
Kitchen	78
Others	257
PES	215
TOTAL	1184



While every reasonable care has been taken in preparing these floor plans, the developer and its agents cannot be held responsible for any inaccuracies. All plans are subject to any amendment approved or as may be approved by the relevant authority. Floor areas are approximate measurements and subject to final survey.

Type B1

Guide to major areas

Approx. sq ft

Living/Dining	332
Master Bedroom	184
Bedroom 2	101
Kitchen	93
Others	226
TOTAL	936*

* Except the following units :

The Dominion	
#01-02/05/08 with PES	1087
The Esquire	
#01-05 with PES	1055
The Noblesse	
#01-02/05/08 with PES	1087
The Regal	
#01-05 with PES	1335

