

 BUYCONDO.  
**DOUBLE BAY**  
RESIDENCES  
*Inspired by nature. Created for luxury.*

A premier development by



**KHENG LEONG CO.**



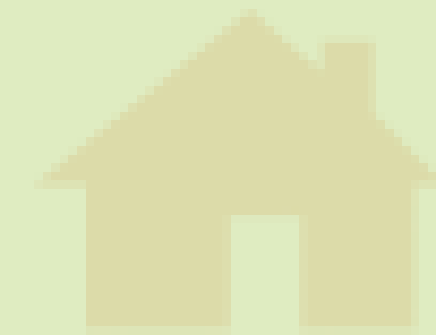
**UOL Group Limited**

Enquiry 8223 1007

A member of:



FLOOR PLANS



BUYCONDO.SG

There is a place that is truly set apart.

A magical place of the most profound luxury and exclusivity.

A private paradise experienced by only the select few.

DOUBLE BAY.





**BLOCK 17**

FL \ UNIT	1	2	3	4
12	D1a	D1a	B1	B1a
11	D1a	D1a	B1	B1a
10	D1a	D1a	B1	B1a
9	D1a	D1a	B1	B1a
8	D1a	D1a	B1	B1a
7	D1a	D1a	B1	B1a
6	D1a	D1a	B1	B1a
5	D1a	D1a	B1	B1a
4	D1a	D1a	B1	B1a
3	D1a	D1a	B1	B1a
2	R1 (#01-08)	R2 (#01-09)	R3 (#01-10)	R4 (#01-11)
1	R5 (#01-12)	R6 (#01-13)		

**BLOCK 17A**

FL \ UNIT	5	6	7	8
12	C1	C1	B1	B1a
11	C1	C1	B1	B1a
10	C1	C1	B1	B1a
9	C1	C1	B1	B1a
8	C1	C1	B1	B1a
7	C1	C1	B1	B1a
6	C1	C1	B1	B1a
5	C1	C1	B1	B1a
4	C1	C1	B1	B1a
3	C1	C1	B1	B1a
2	C1	C1	A1	A1
1	CG1	CG2	AG1	AG1

**BLOCK 17B**

FL \ UNIT	9	10	11	12
12	C1	C1	B1	B1
11	C1	C1	B1	B1
10	C1	C1	B1	B1
9	C1	C1	B1	B1
8	C1	C1	B1	B1
7	C1	C1	B1	B1
6	C1	C1	B1	B1
5	C1	C1	B1	B1
4	C1	C1	B1	B1
3	C1	C1	B1	B1
2	C1	C1	A1	A1
1	CG2	CG2	AG1	AG1

**BLOCK 17C**

FL \ UNIT	13	14	15	16
12	C1	C1	B1b	B1
11	C1	C1	B1b	B1
10	C1	C1	B1b	B1
9	C1	C1	B1b	B1
8	C1	C1	B1b	B1
7	C1	A1	B1b	B1
6	C1	A1	B1b	B1
5	C1		B1b	B1
4	C1		B1b	B1
3	C1		B1b	B1
2	C1		A1	A1
1	CG2		AG1	AG1

**BLOCK 19**

FL \ UNIT	17	18	19	20
12	P1 (#12-17)	B1a	B1a	
11	D1	D1a	B1a	B1a
10	D1	D1a	B1a	B1a
9	D1	D1a	B1a	B1a
8	D1	D1a	B1a	B1a
7	D1	A2	A1	B1a
6	D1	A2	A1	B1a
5	D1			B1a
4	D1			B1a
3	D1			B1a
2	D1			B1a
1	DG9			BG1

**BLOCK 19A**

FL \ UNIT	21	22	23	24
12	P4 (#12-21)	D1a	D1a	
11	F1	F1	D1a	D1a
10	F1	F1	D1a	D1a
9	F1	F1	D1a	D1a
8	F1	F1	D1a	D1a
7	F1	F1	D1a	D1a
6	F1	F1	D1a	D1a
5	F1	F1	D1a	D1a
4	F1	F1	D1a	D1a
3	F1	F1	D1a	D1a
2	F1	F1	D1a	D1a
1	FG1	FG1	DG5	DG5

**BLOCK 19B**

FL \ UNIT	25	26	27	28
12	P3 (#12-25)	D1a	D1a	
11	E1	E1	D1a	D1a
10	E1	E1	D1a	D1a
9	E1	E1	D1a	D1a
8	E1	E1	D1a	D1a
7	E1	E1	D1a	D1a
6	E1	E1	D1a	D1a
5	E1	E1	D1a	D1a
4	E1	E1	D1a	D1a
3	E1	E1	D1a	D1a
2	E1	E1	D1a	D1a
1	EG2	EG2	DG8	DG7

**BLOCK 19C**

FL \ UNIT	29	30	31	32
12	P3 (#12-29)	B1a	B1a	
11	E1	E1	B1a	B1a
10	E1	E1	B1a	B1a
9	E1	E1	B1a	B1a
8	E1	E1	B1a	B1a
7	E1	E1	B1a	B1a
6	E1	E1	B1a	B1a
5	E1	E1	B1a	B1a
4	E1	E1	B1a	B1a
3	E1	E1	B1a	B1a
2	E1	E1	B1a	B1a
1	EG2	EG2	BG1	BG1

**BLOCK 19D**

FL \ UNIT	33	34	35	36
12	P3 (#12-33)	D1	D1	
11	E1	E1	D1	D1
10	E1	E1	D1	D1
9	E1	E1	D1	D1
8	E1	E1	D1	D1
7	E1	E1	D1	D1
6	E1	E1	D1	D1
5	E1	E1	D1	D1
4	E1	E1	D1	D1
3	E1	E1	D1	D1
2	E1	E1	D1	D1
1	EG2	EG2	DG1	DG1

**BLOCK 21**

FL \ UNIT	37	38	39	40
12	P3a (#13-38)	D1	D1a	
11	E1a	E1	D1	D1a
10	E1a	E1	D1	D1a
9	E1a	E1	D1	D1a
8	E1a	E1	D1	D1a
7	E1a	E1	D1	D1a
6	E1a	E1	D1	D1a
5	E1a	E1	D1	D1a
4	E1a	E1	D1	D1a
3	E1a	E1	D1	D1a
2	E1a	E1	DG3	DG6
1	EG3	EG2		

**BLOCK 21A**

FL \ UNIT	41	42	43	44
12	P3 (#13-42)	D2	D2	
11	F1a	F1	D2	D2
10	E1	E1	D2	D2
9	E1	E1	D2	D2
8	E1	E1	D2	D2
7	E1	E1	D2	D2
6	E1	E1	D2	D2
5	E1	E1	D2	D2
4	E1	E1	D2	D2
3	E1	E1	D2	D2
2	E1	E1	D2	D2
1	EG2	EG2	DG2	DG2

**BLOCK 21B**

FL \ UNIT	45	46	47	48
12	P4a (#13-46)	D2	D2	
11	F1a	F1	D2	D2
10	F1a	F1	D2	D2
9	F1a	F1	D2	D2
8	F1a	F1	D2	D2
7	F1a	F1	D2	D2
6	F1a	F1	D2	D2
5	F1a	F1	D2	D2
4	F1a	F1	D2	D2
3	F2a	F2	D2	D2
2	G1a	G1	D2	D2
1			DG2	DG2

**BLOCK 21C**

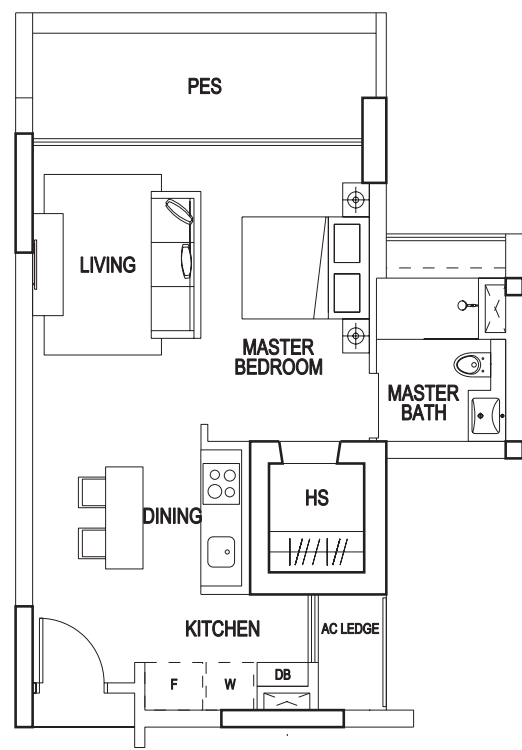
FL \ UNIT	49	50	51	52
12	P4a (#13-50)	E1	E1	
11	F1	F1a	E1	E1
10	F1	F1a	E1	E1
9	F1	F1a	E1	E1
8	F1	F1a	E1	E1
7	F1	F1a	E1	E1
6	F1	F1a	E1	E1
5	F1	F1a	E1	E1
4	F1	F1a	E1	E1
3	F2	F2a	E1	E1
2	G1	G1a	E1	E1
1			EG1	EG1

**BLOCK 21D**

FL \ UNIT	53	54	55	56
12	P2 (#13-54)	D1a	D1a	
11	D2	D2a	D1a	D1a
10	D2	D2a	D1a	D1a
9	D2	D2a	D1a	D1a
8	D2	D2a	A2	D1a
7	D2	D2a	A2	D1a
6	D2	D2a		D1a
5	D2	D2a		D1a
4	D2	D2a		D1a
3	D2	D2a		D1a
2	D2	D2a		DG6
1	DG4	DG4		

- Shops
- 1 bedroom
- 2 bedroom
- 2 bedroom + Study
- 3 bedroom
- 3 bedroom + Study
- 4 bedroom
- Duplex
- Penthouse

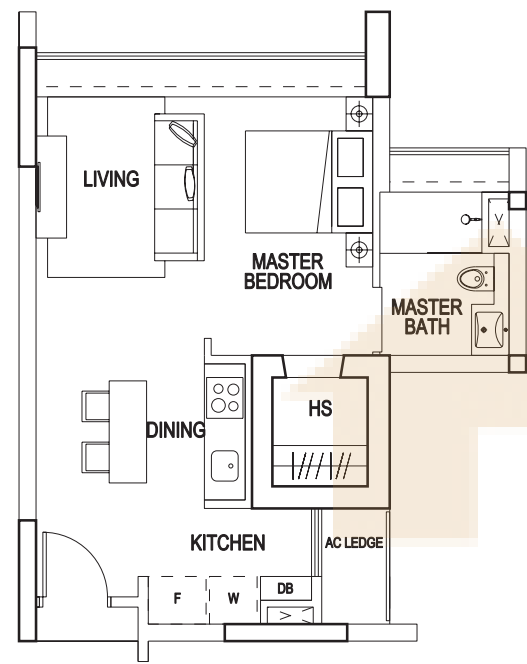




**TYPE AG1: 1 – BEDROOM**

59 sq m / 635 sq ft  
#01-08, #01-12, #01-16

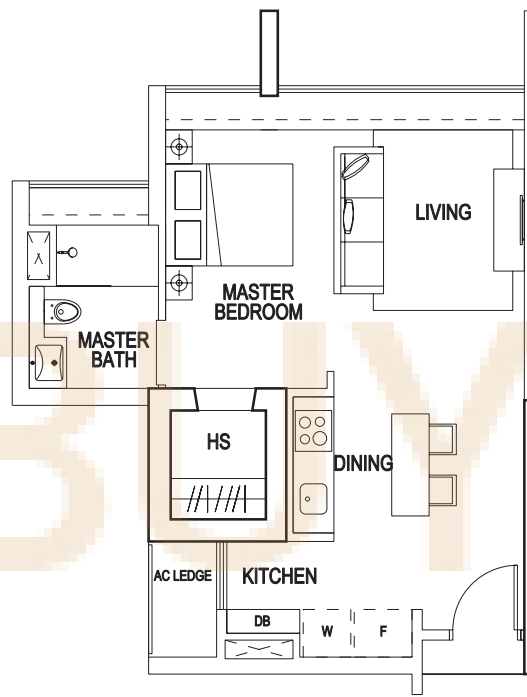
MIRROR IMAGE  
#01-17, #01-11, #01-15



**TYPE A1: 1 – BEDROOM**

50 sq m / 538 sq ft  
#02-08, #02-12, #02-16, #06-14, #07-14

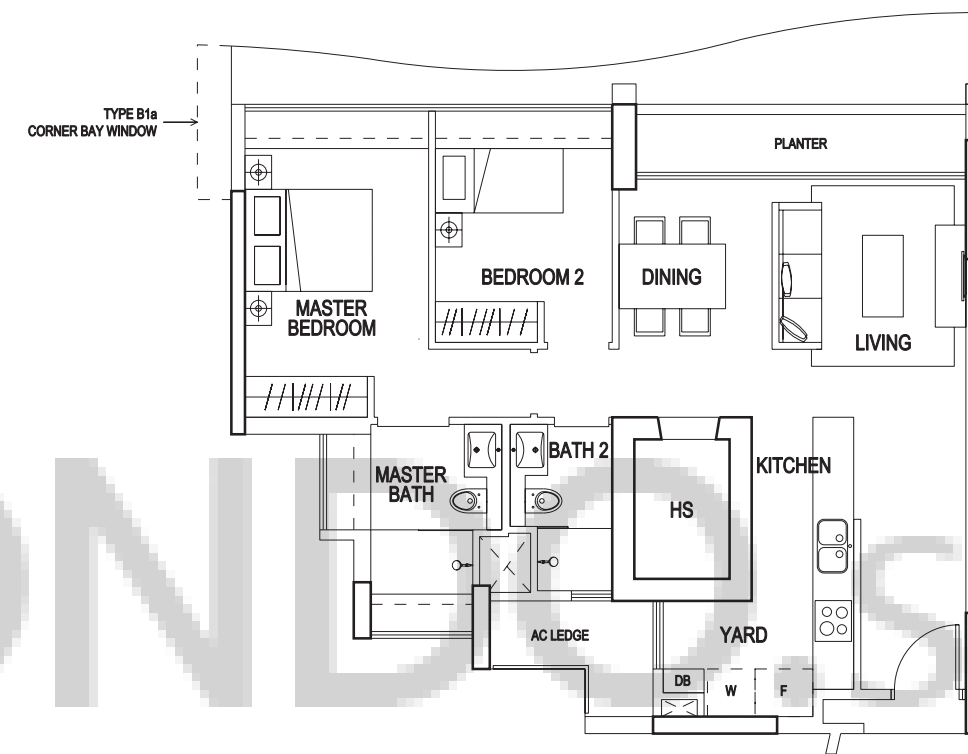
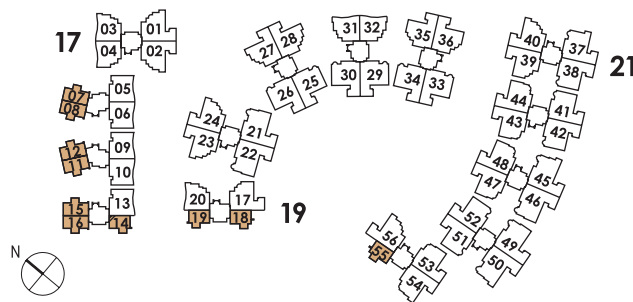
MIRROR IMAGE  
#02-07, #02-11, #02-15, #06-19, #07-19



**TYPE A2: 1 – BEDROOM**

52 sq m / 560 sq ft  
#07-55, #08-55

MIRROR IMAGE  
#06-18, #07-18



**TYPE B1: 2 – BEDROOM**

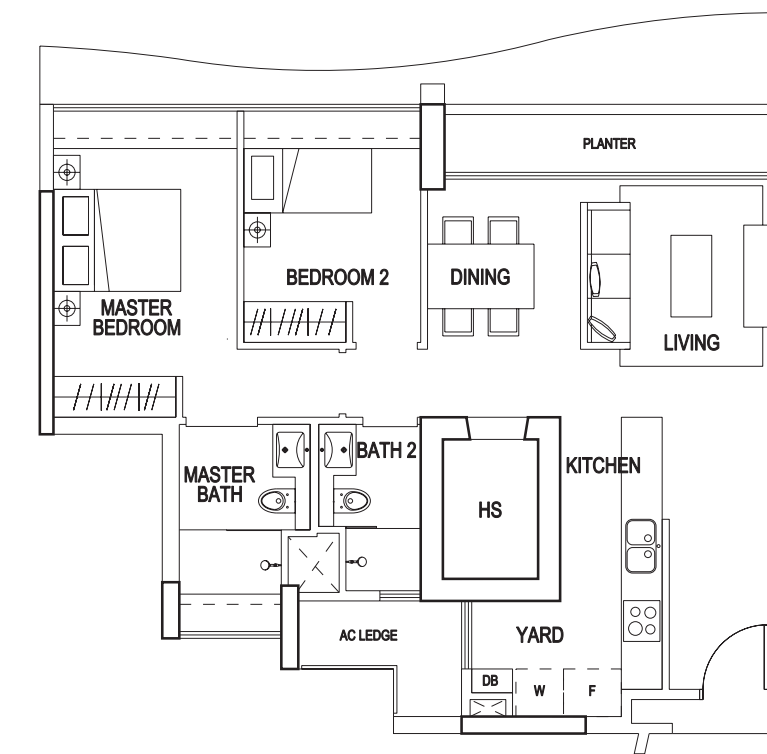
85 sq m / 915 sq ft  
#03-03 to #12-03, #03-07 to #12-07, #03-11 to #12-11

MIRROR IMAGE  
#03-12 to #12-12, #03-16 to #12-16

**TYPE B1a: 2 – BEDROOM**

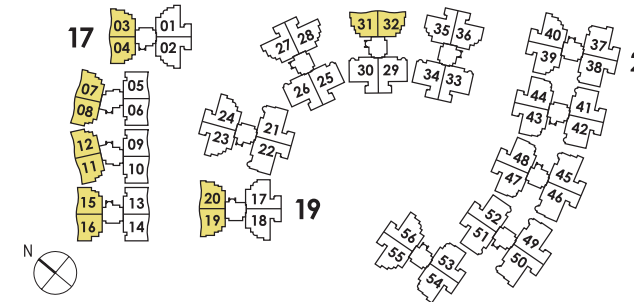
85 sq m / 915 sq ft  
#02-31 to #12-31, #08-19 to #12-19

MIRROR IMAGE  
#03-04 to #12-04, #03-08 to #12-08, #02-20 to #12-20,  
#02-32 to #12-32

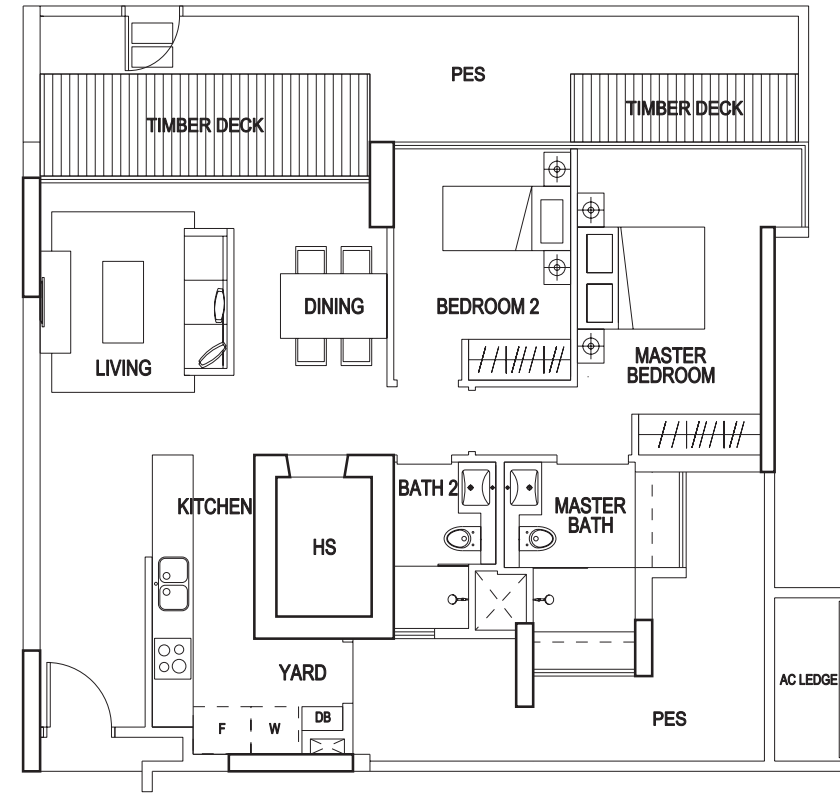


**TYPE B1b: 2 – BEDROOM**

86 sq m / 926 sq ft  
#03-15 to #12-15



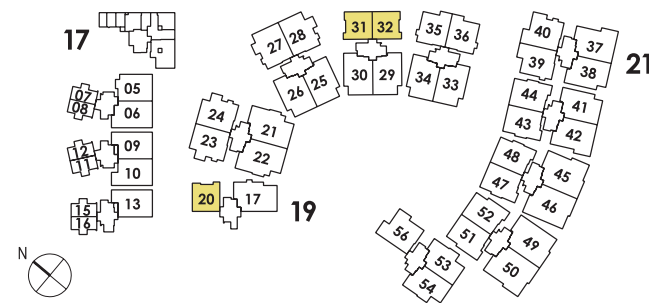




**TYPE BG1: 2 – BEDROOM**

124 sq m / 1335 sq ft  
#01-20, #01-32

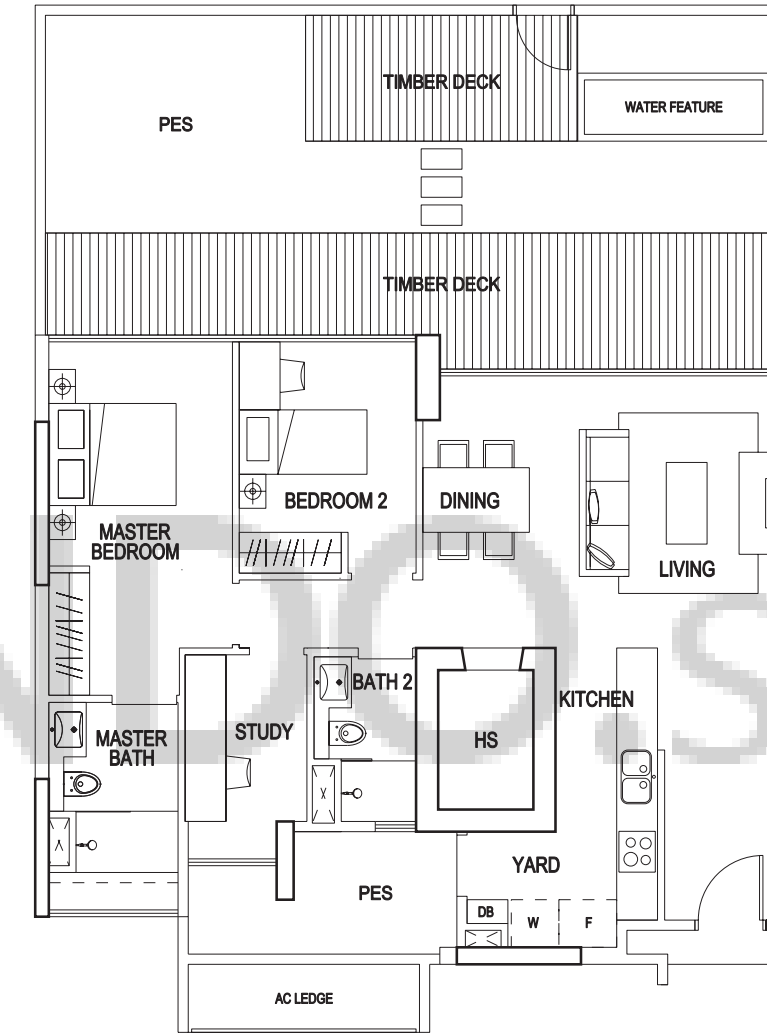
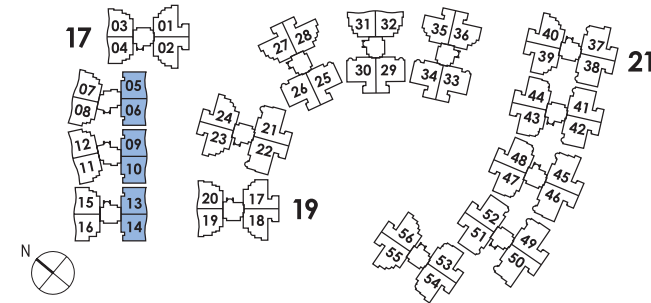
MIRROR IMAGE  
#01-31



**TYPE C1: 2 – BEDROOM + STUDY**

93 sq m / 1001 sq ft  
#02-05 to #12-05, #02-09 to #12-09, #02-13 to #12-13

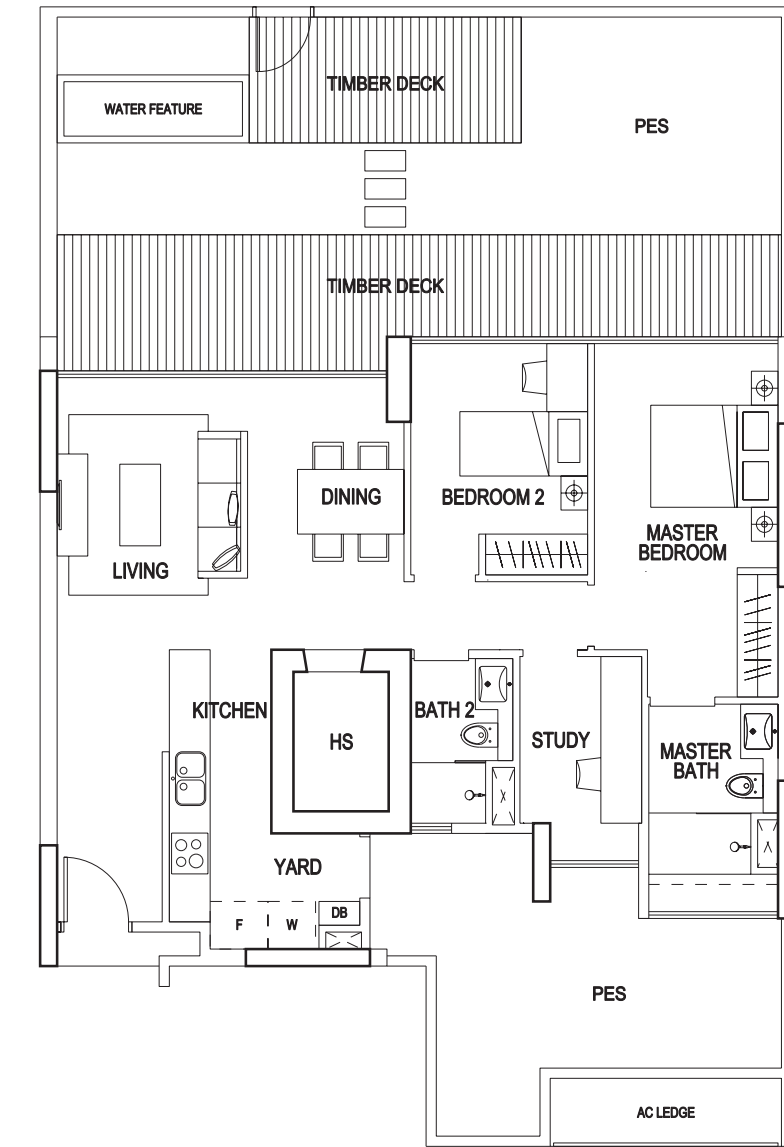
MIRROR IMAGE  
#02-06 to #12-06, #02-10 to #12-10, #08-14 to #12-14



**TYPE CG1: 2 – BEDROOM + STUDY**

153 sq m / 1647 sq ft  
#01-05

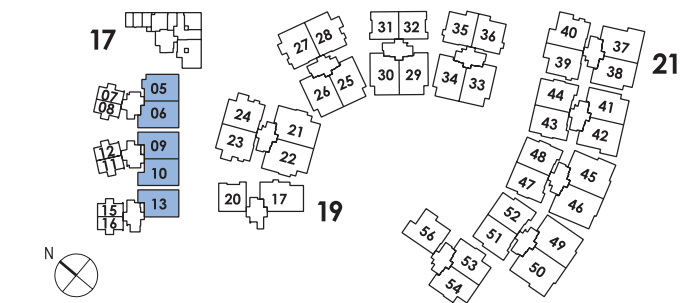
The above plans are subject to change as may be approved by the relevant authority. Areas are approximate measurements and subject to final survey. Plans are not to scale.



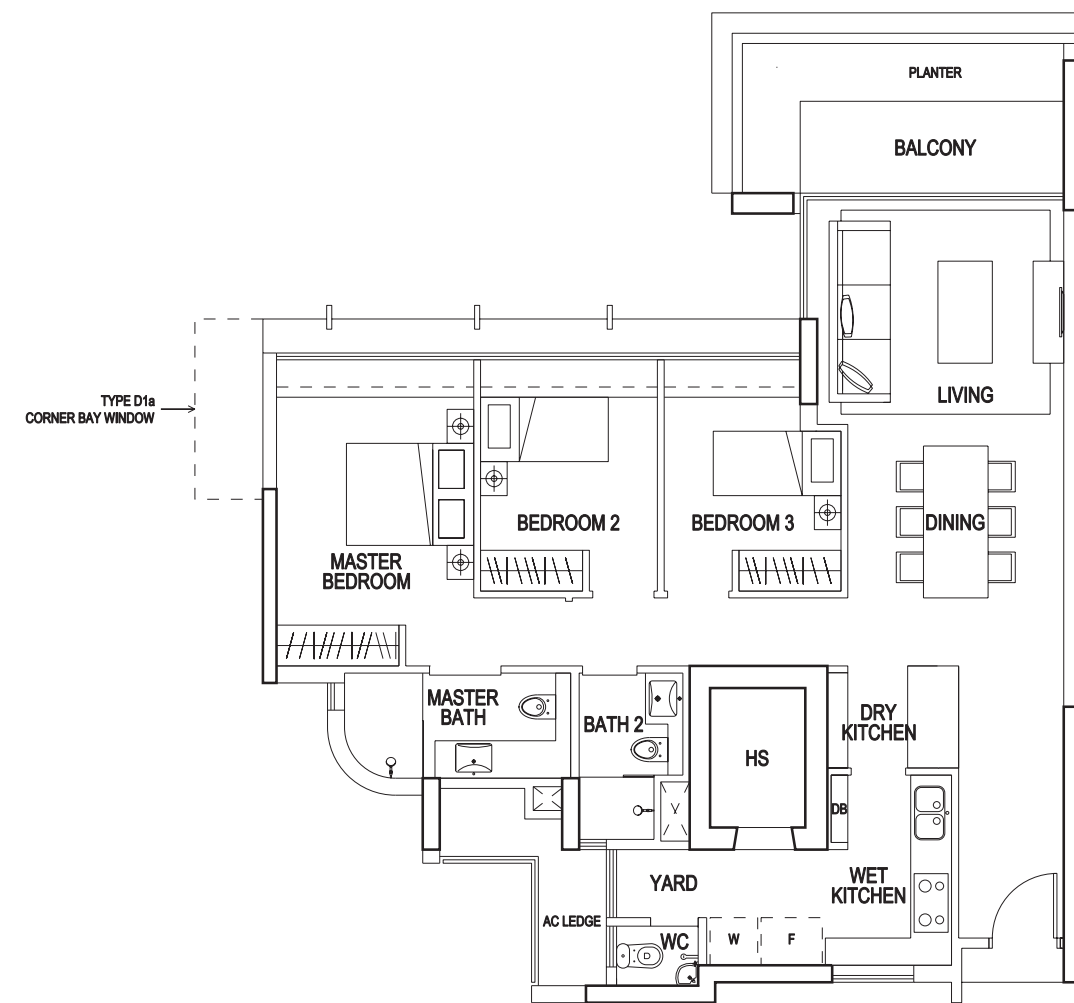
**TYPE CG2: 2 – BEDROOM + STUDY**

164 sq m / 1765 sq ft  
#01-06, #01-10

MIRROR IMAGE  
#01-09, #01-13



The above plans are subject to change as may be approved by the relevant authority. Areas are approximate measurements and subject to final survey. Plans are not to scale.



**TYPE D1: 3 – BEDROOM**

117 sq m / 1259 sq ft  
 #02-17 to #11-17, #02-35 to #12-35, #03-39 to #13-39

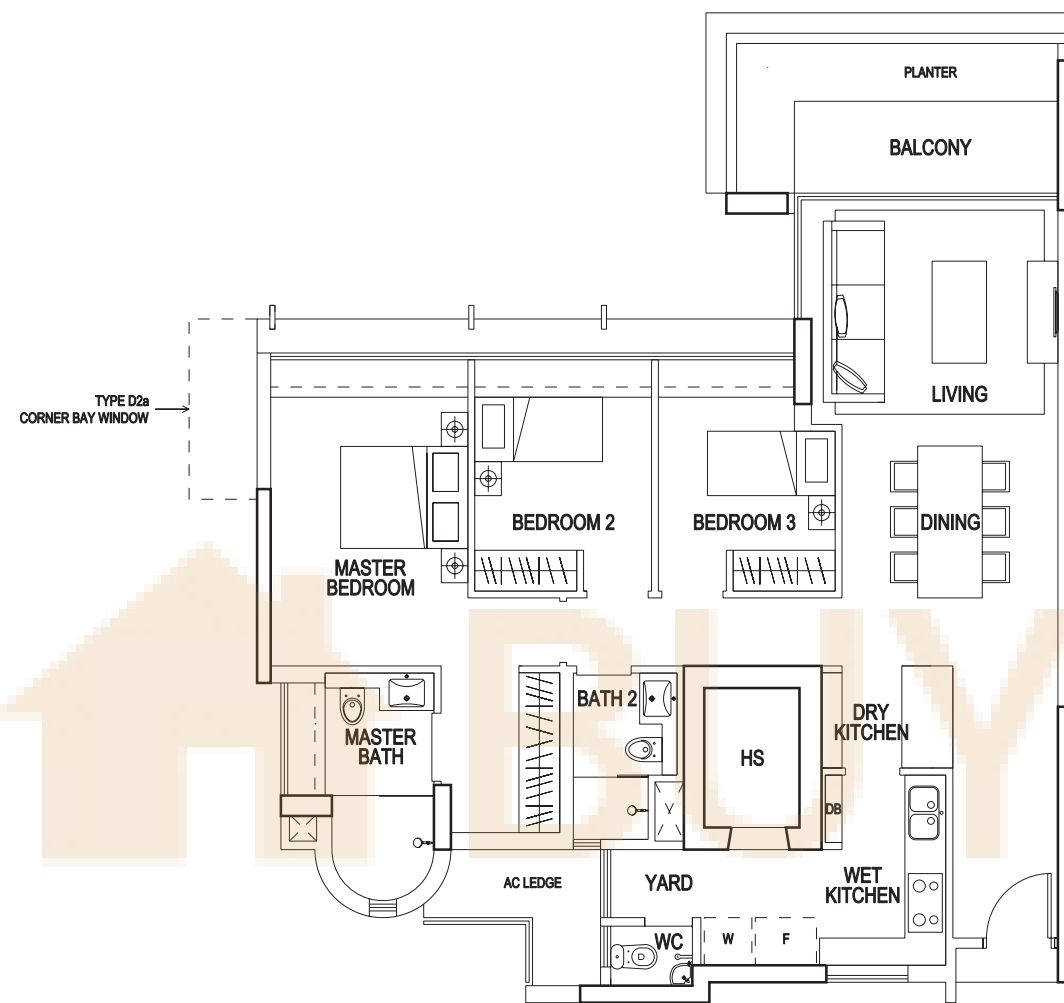
MIRROR IMAGE  
 #02-36 to #12-36

**TYPE D1a: 3 – BEDROOM**

118 sq m / 1270 sq ft  
 #03-01 to #12-01, #02-23 to #12-23, #02-27 to #12-27, #09-55 to #13-55

MIRROR IMAGE  
 #03-02 to #12-02, #08-18 to #11-18, #02-24 to #12-24, #02-28 to #12-28,  
 #03-40 to #13-40, #03-56 to #13-56

The above plans are subject to change as may be approved by the relevant authority.  
 Areas are approximate measurements and subject to final survey. Plans are not to scale.



**TYPE D2: 3 – BEDROOM**

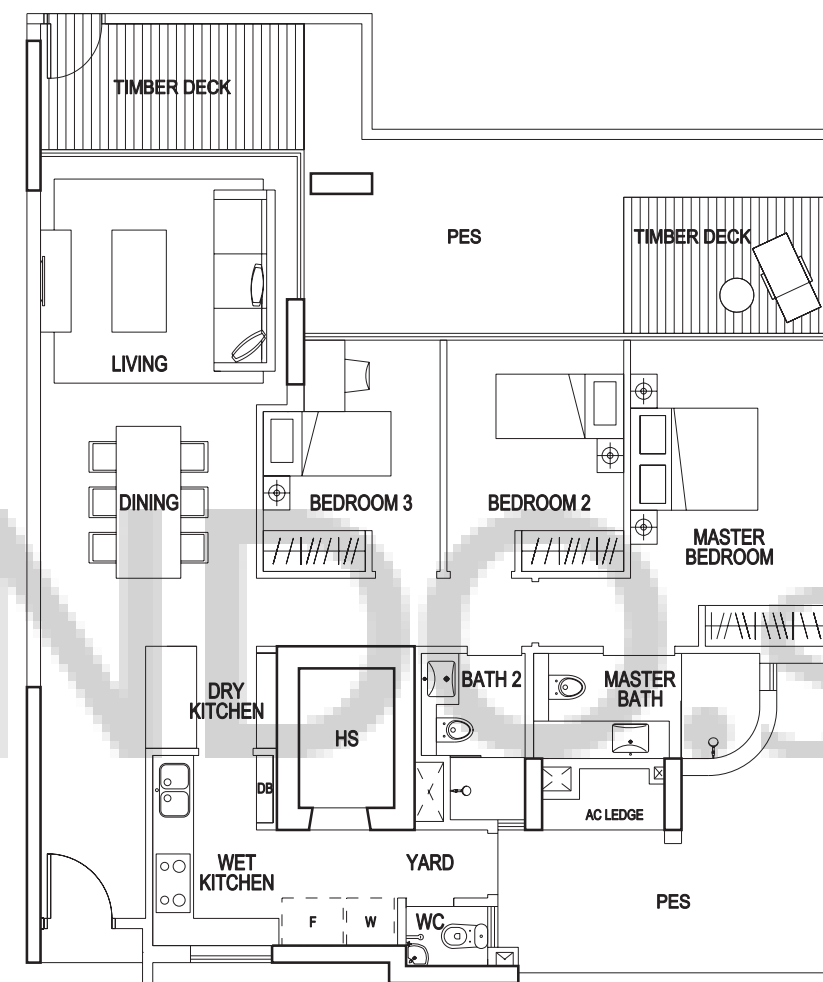
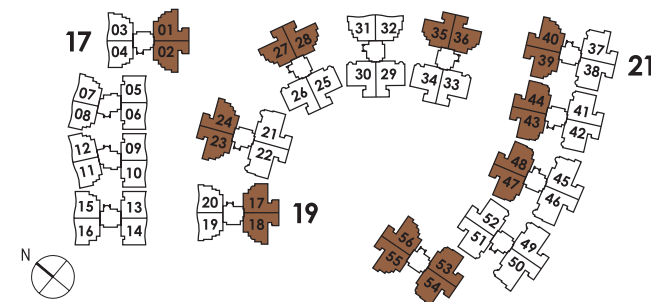
122 sq m / 1313 sq ft  
 #02-43 to #13-43, #02-47 to #13-47, #02-53 to #12-53

MIRROR IMAGE  
 #02-44 to #13-44, #02-48 to #13-48

**TYPE D2a: 3 – BEDROOM**

123 sq m / 1324 sq ft

MIRROR IMAGE  
 #02-54 to #12-54

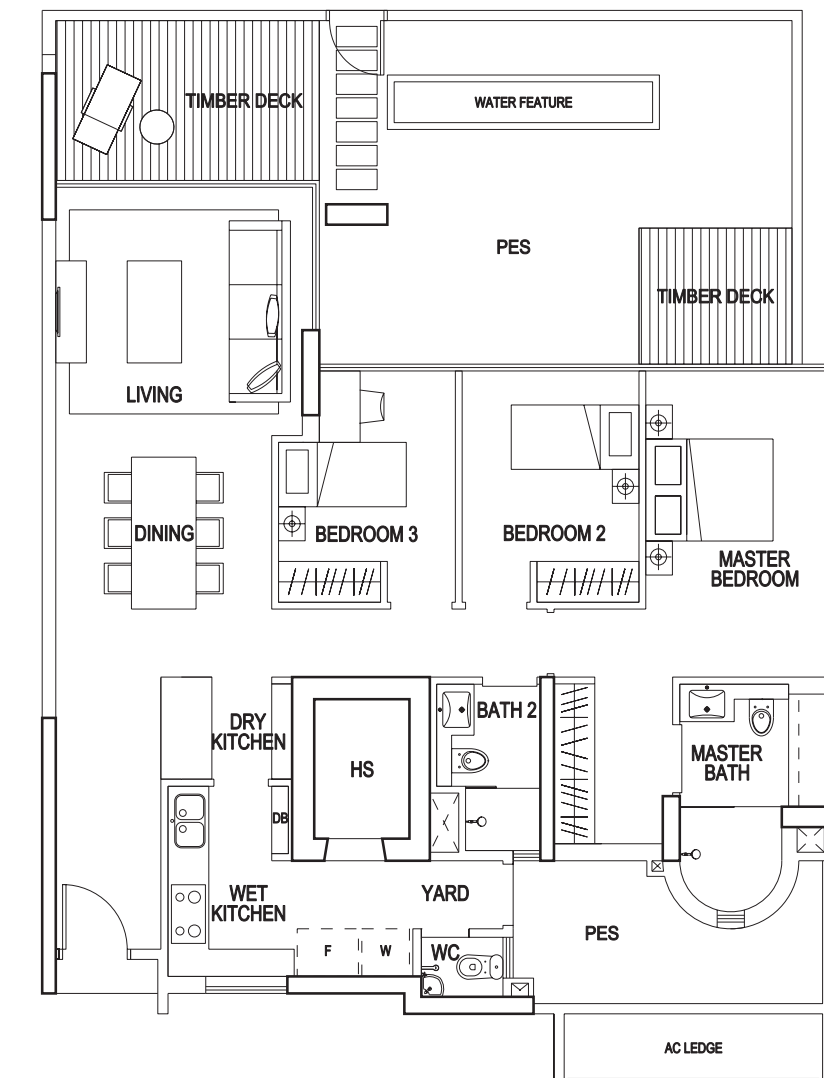


**TYPE DG1: 3 – BEDROOM**

154 sq m / 1658 sq ft  
 #01-36

MIRROR IMAGE  
 #01-35

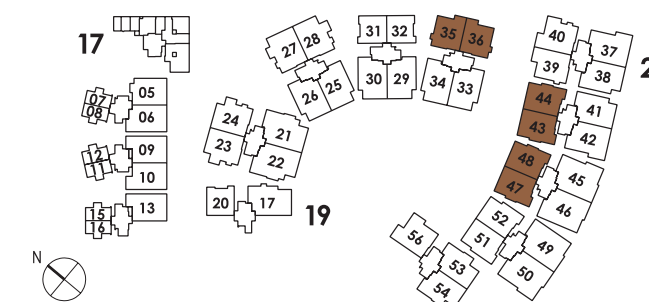
The above plans are subject to change as may be approved by the relevant authority.  
 Areas are approximate measurements and subject to final survey. Plans are not to scale.

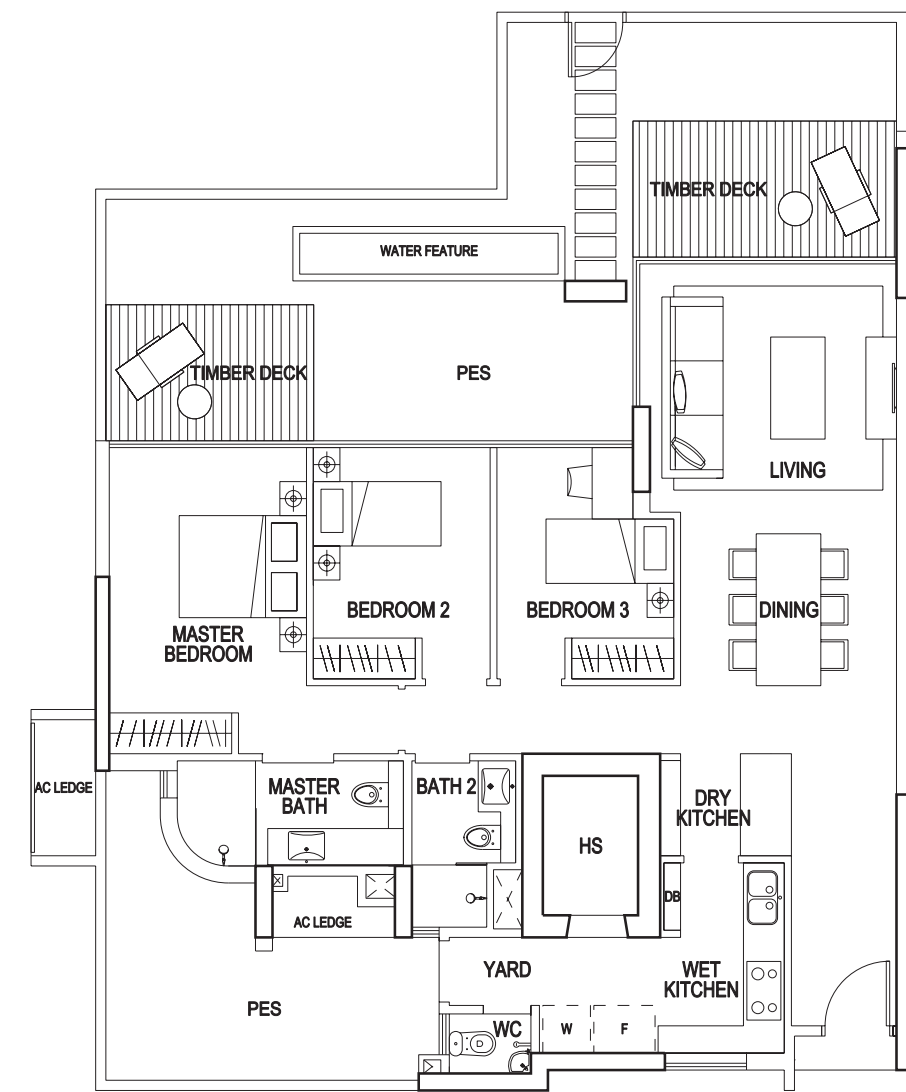


**TYPE DG2: 3 – BEDROOM**

168 sq m / 1808 sq ft  
 #01-44, #01-48

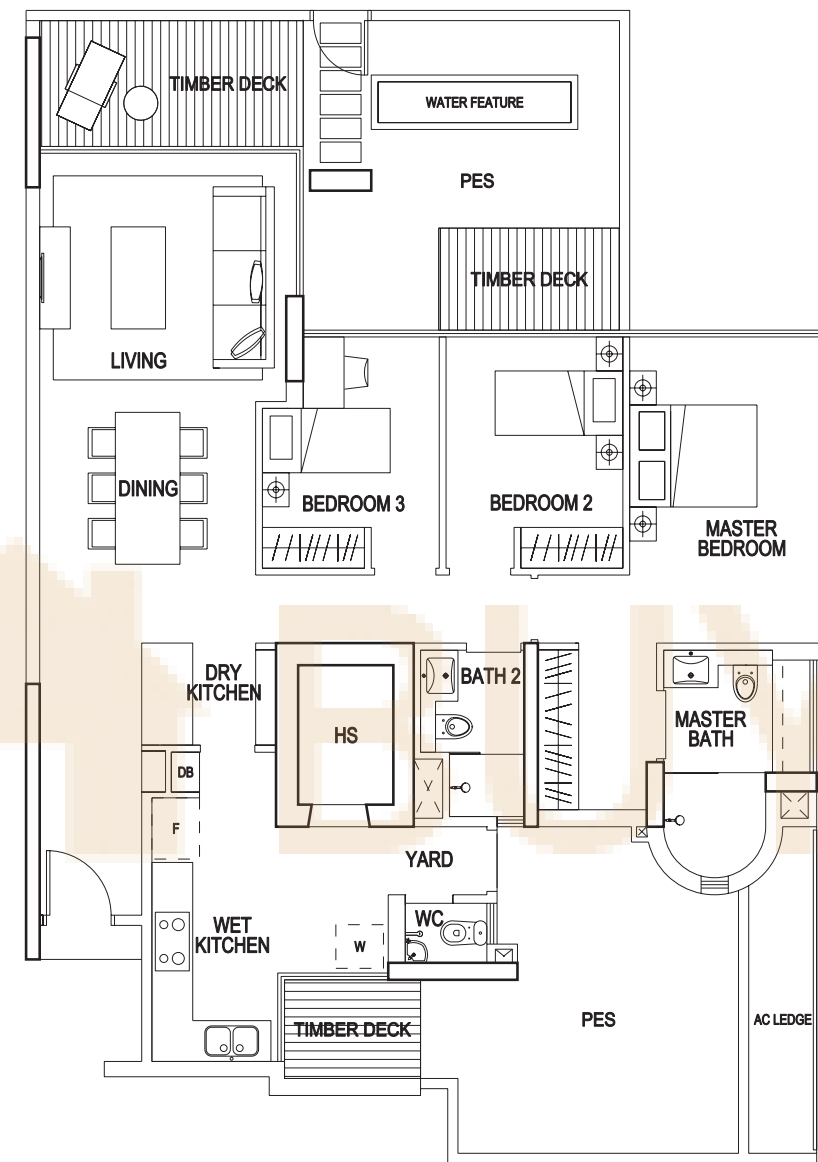
MIRROR IMAGE  
 #01-43, #01-47





**TYPE DG3: 3 – BEDROOM**

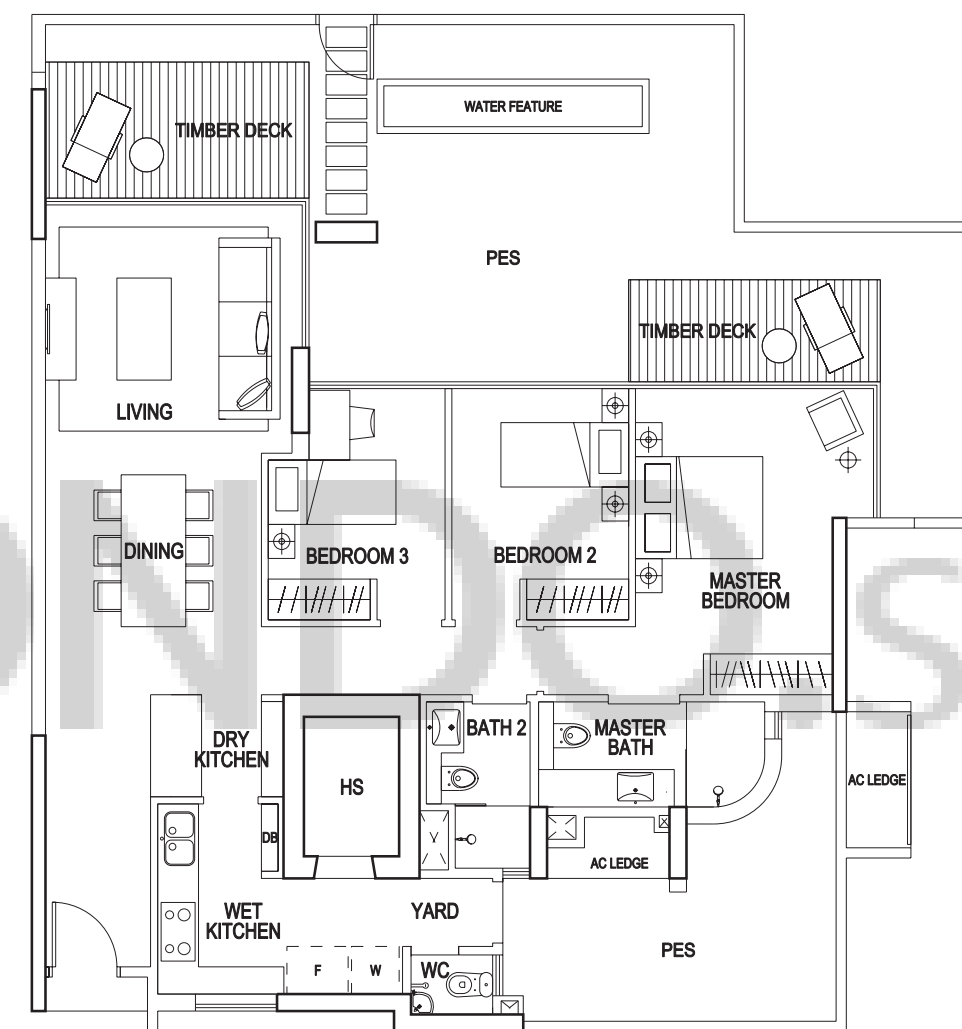
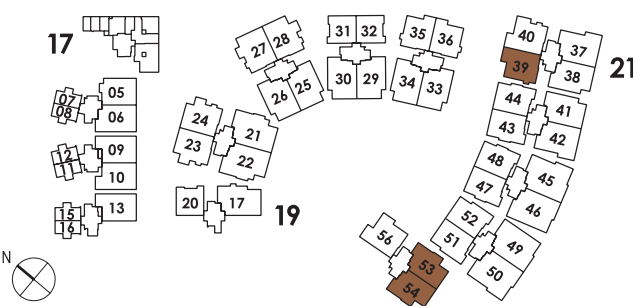
169 sq m / 1819 sq ft  
#02-39



**TYPE DG4: 3 – BEDROOM**

170 sq m / 1830 sq ft  
#01-54

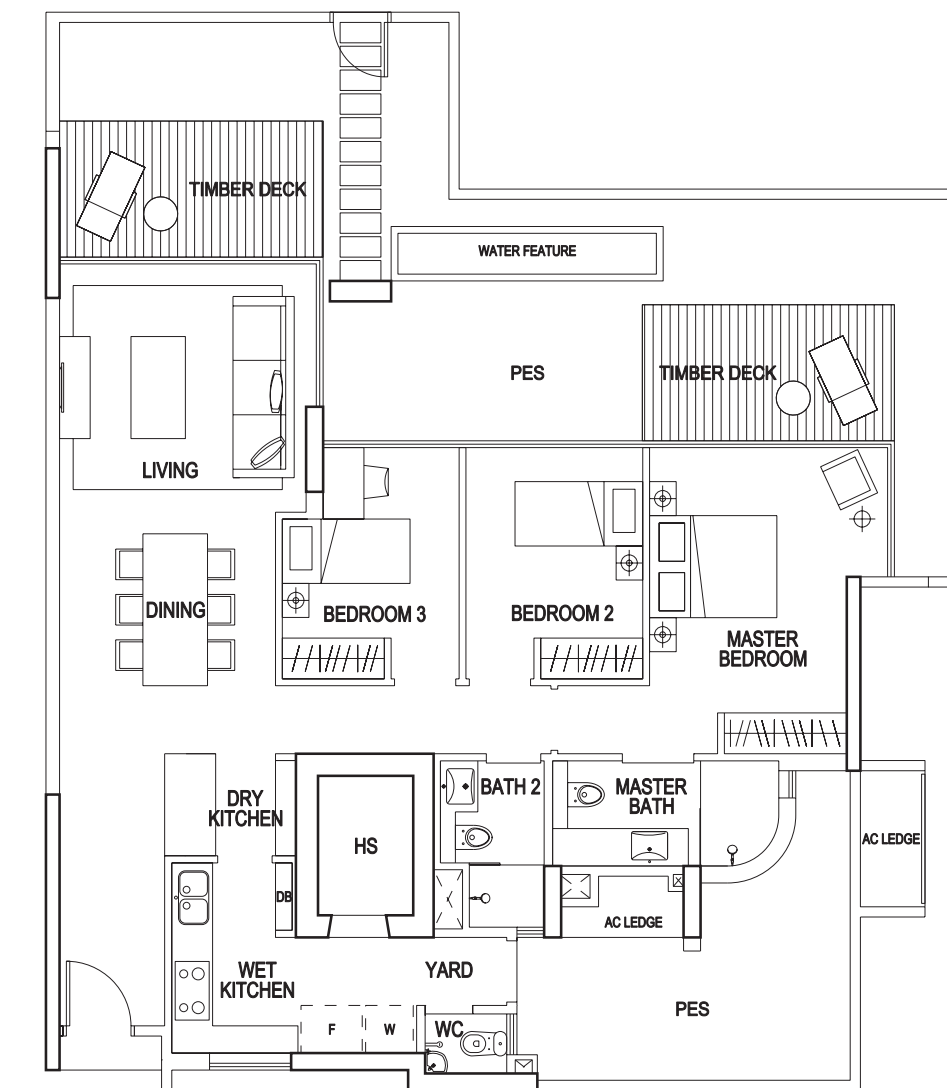
MIRROR IMAGE  
#01-53



**TYPE DG5: 3 – BEDROOM**

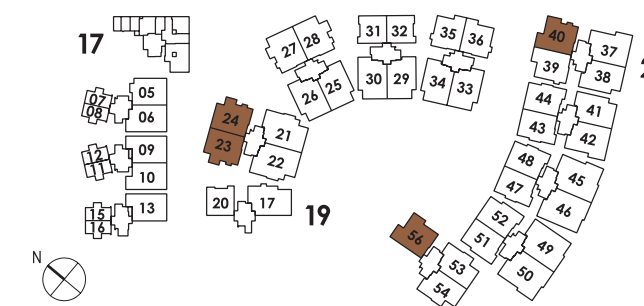
178 sq m / 1916 sq ft  
#01-24

MIRROR IMAGE  
#01-23

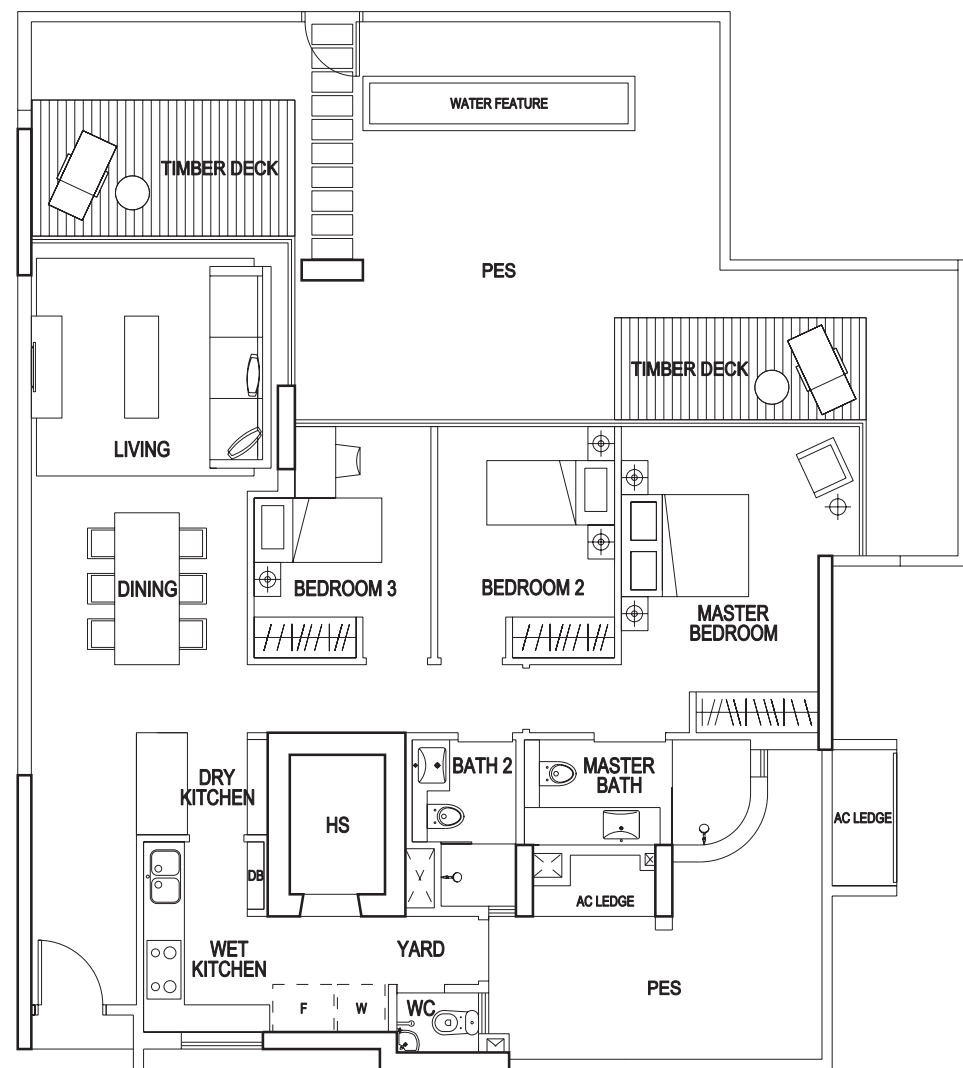


**TYPE DG6: 3 – BEDROOM**

179 sq m / 1927 sq ft  
#02-40, #02-56

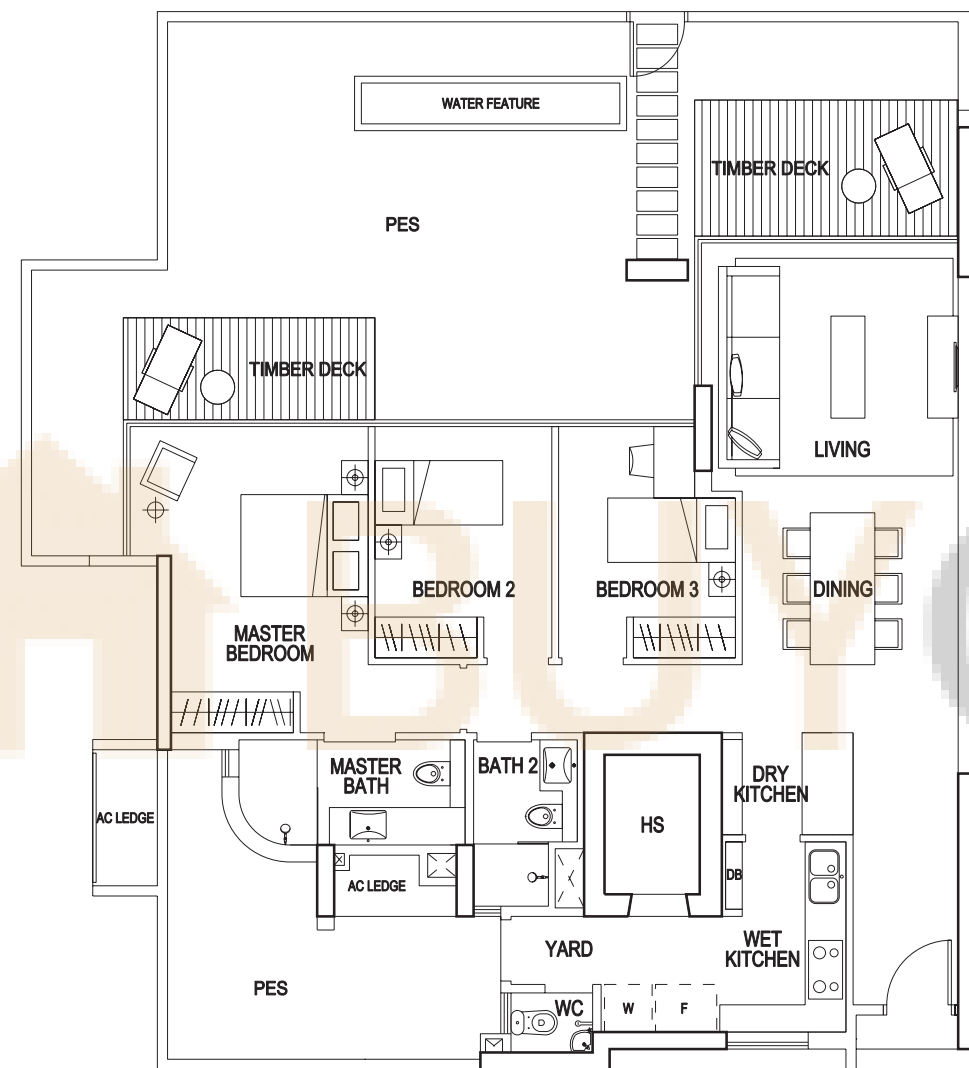






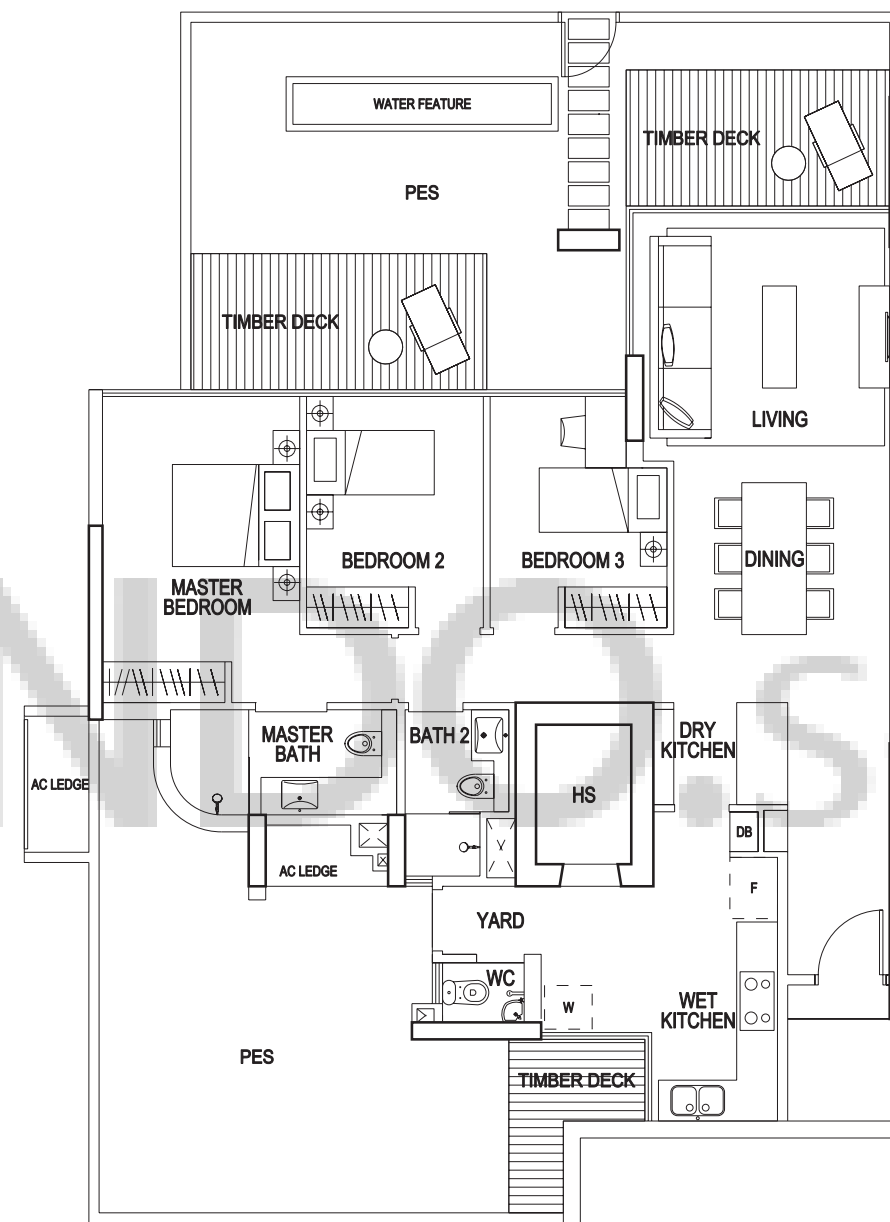
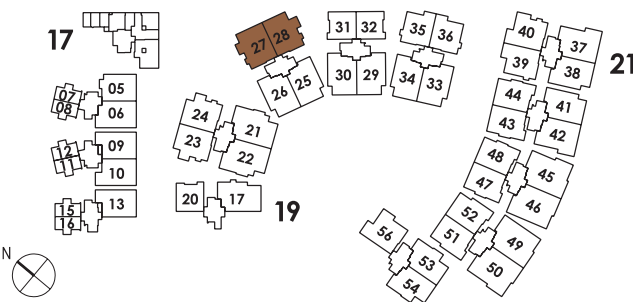
**TYPE DG7: 3 – BEDROOM**

184 sq m / 1981 sq ft  
#01-28



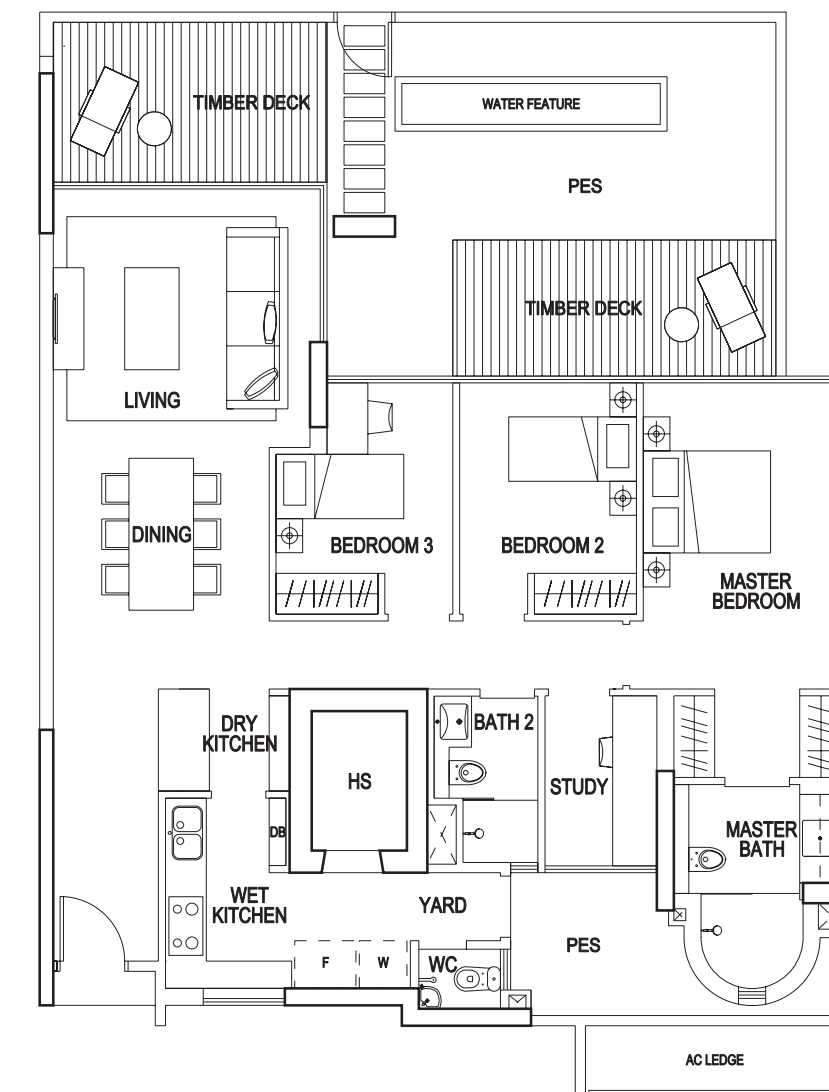
**TYPE DG8: 3 – BEDROOM**

190 sq m / 2045 sq ft  
#01-27



**TYPE DG9: 3 – BEDROOM**

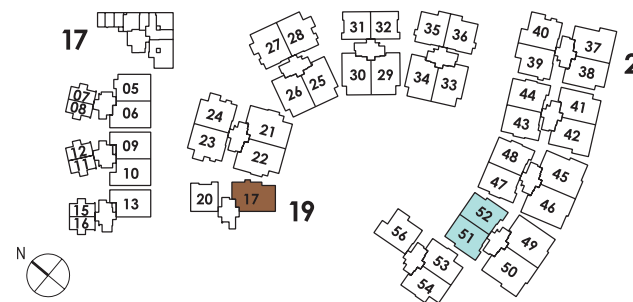
193 sq m / 2077 sq ft  
#01-17

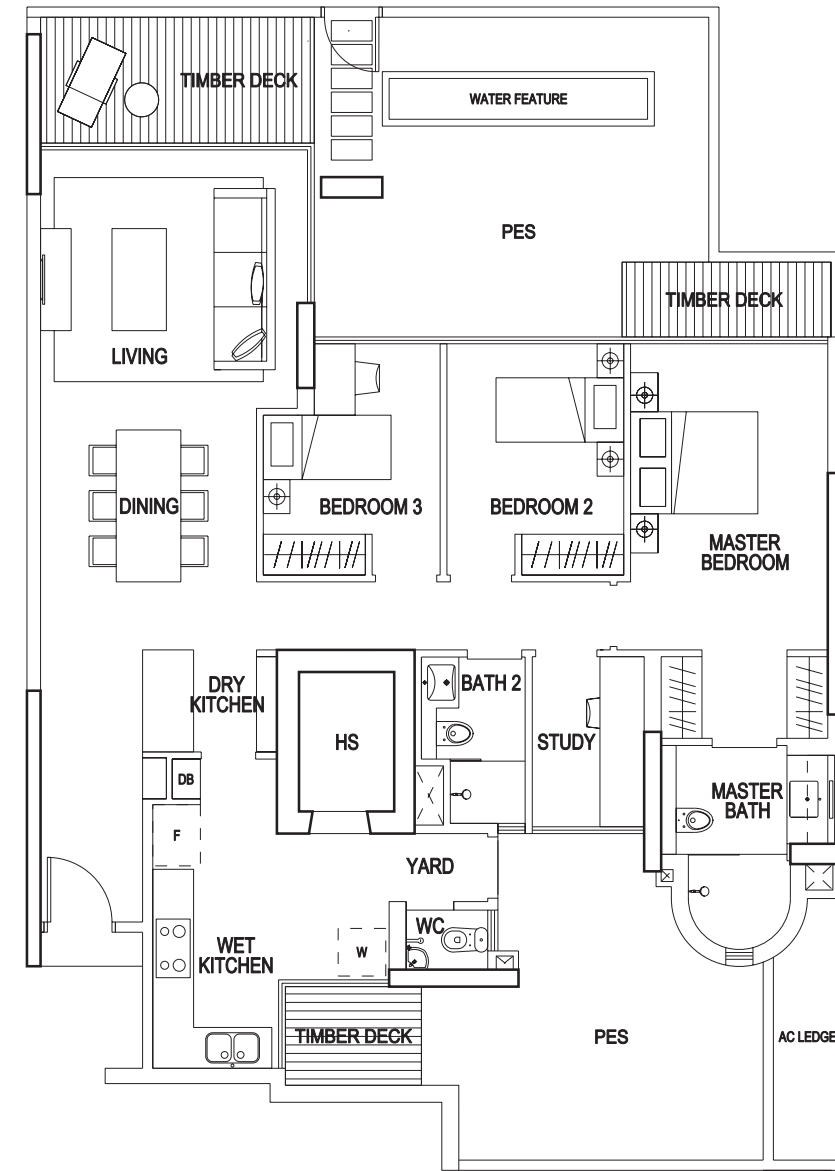


**TYPE EG1: 3 – BEDROOM + STUDY**

170 sq m / 1830 sq ft  
#01-52

MIRROR IMAGE  
#01-51

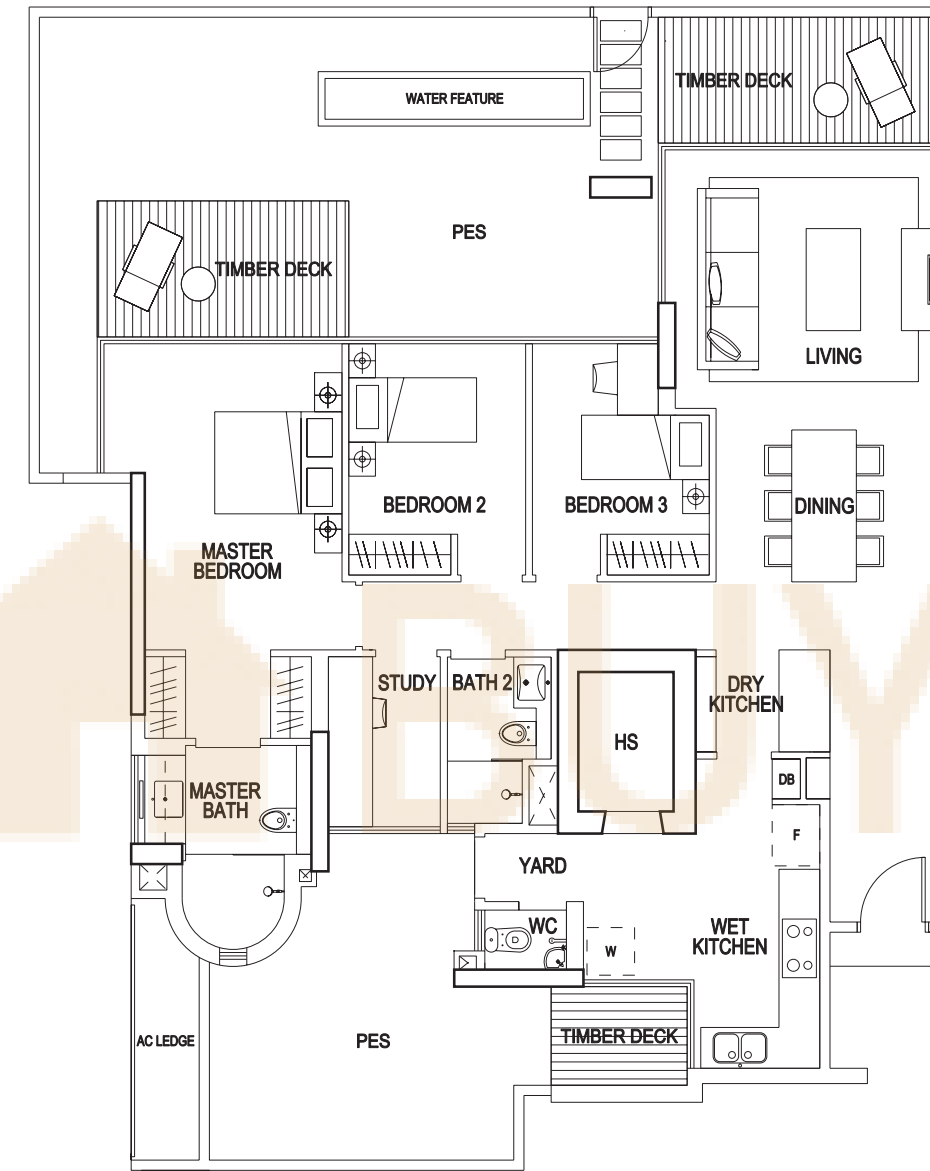




**TYPE EG2: 3 – BEDROOM + STUDY**

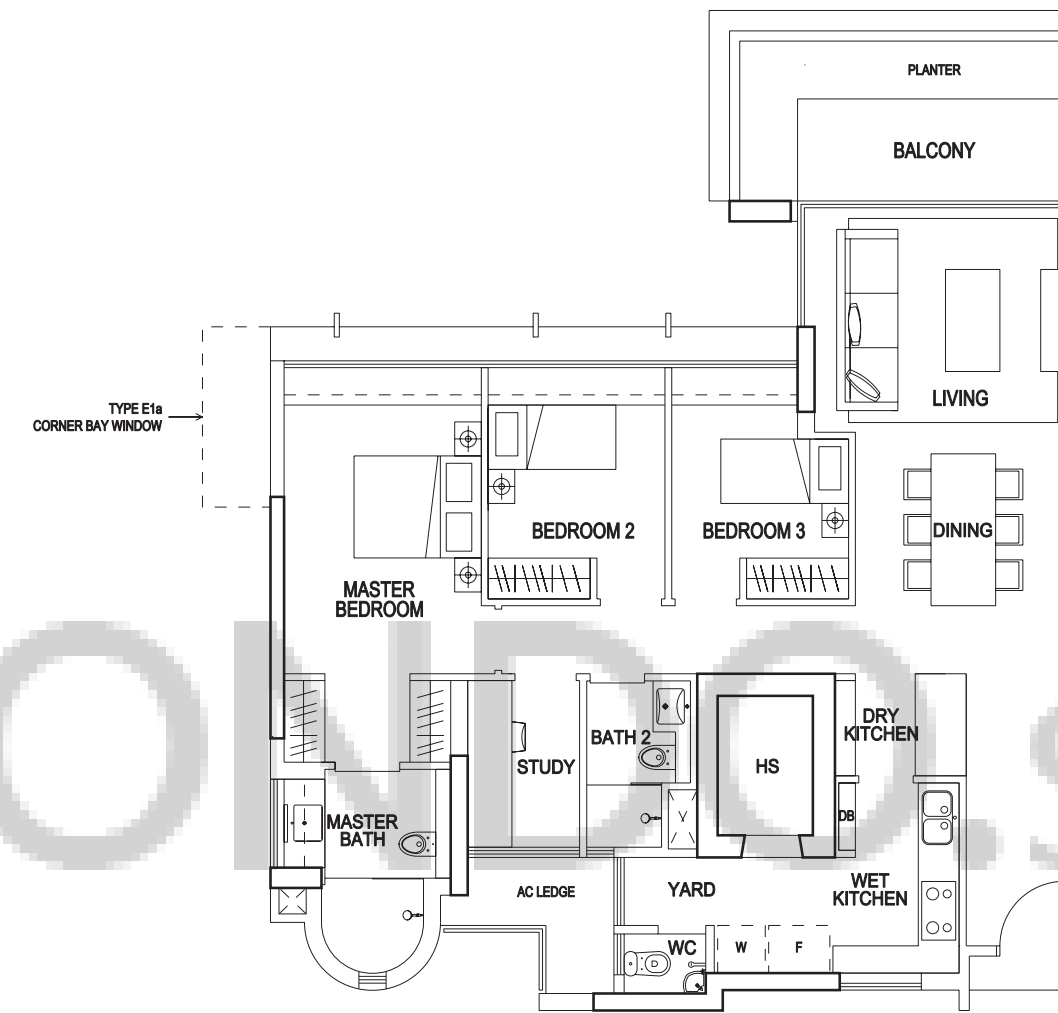
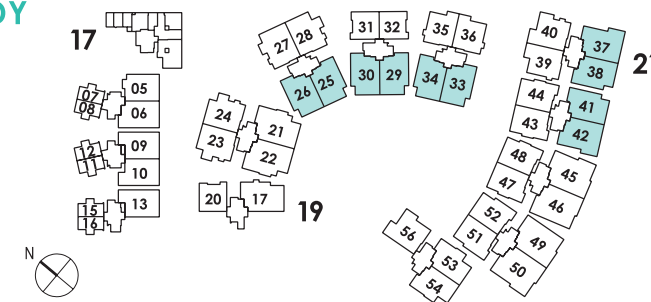
183 sq m / 1970 sq ft  
 #01-26, #01-30, #01-34, #01-38, #01-42

MIRROR IMAGE  
 #01-25, #01-29, #01-33, #01-41



**TYPE EG3: 3 – BEDROOM + STUDY**

199 sq m / 2142 sq ft  
 #01-37



**TYPE E1: 3 – BEDROOM + STUDY**

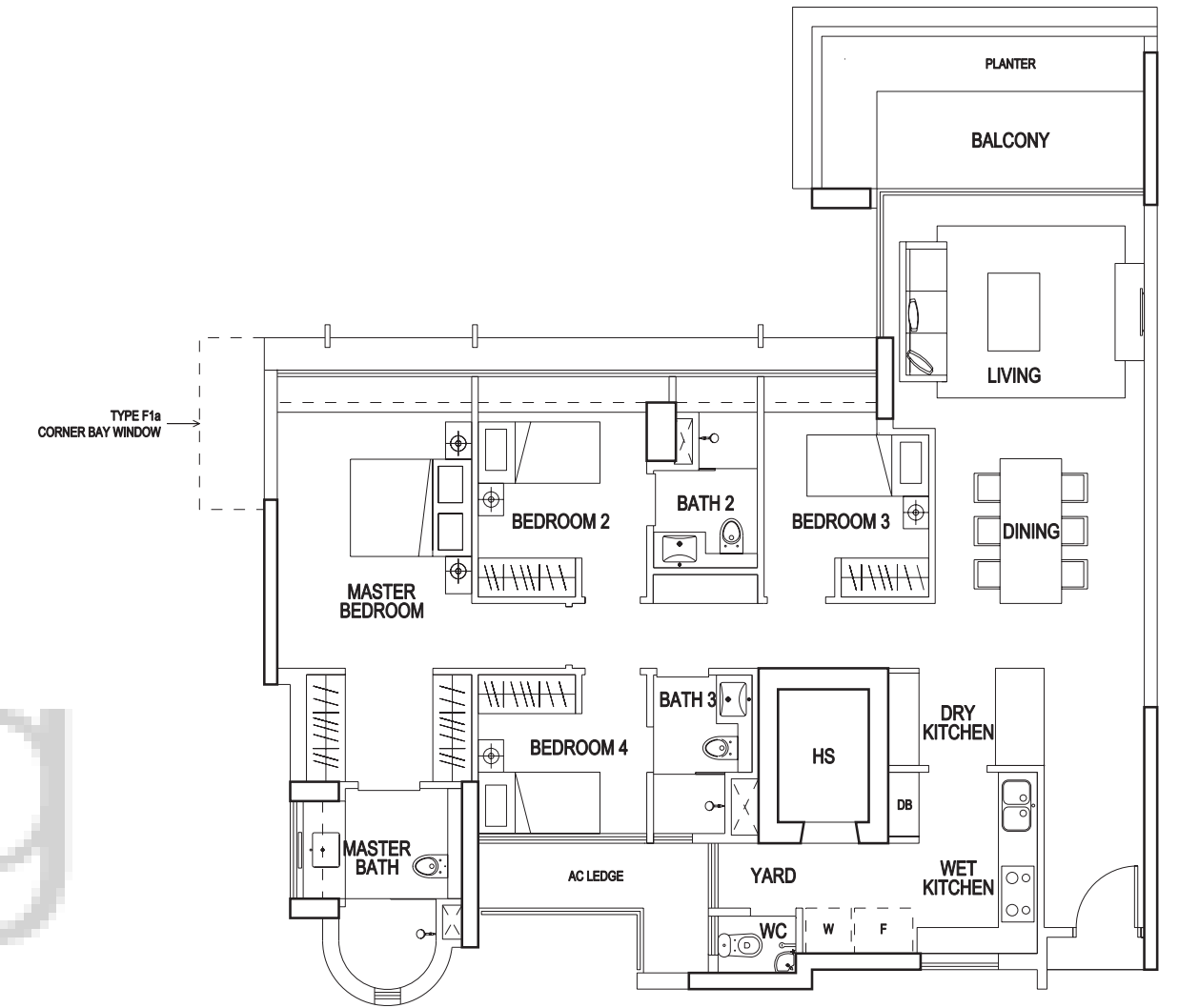
127 sq m / 1367 sq ft  
 #02-25 to #11-25, #02-29 to #11-29, #02-33 to #11-33,  
 #02-41 to #12-41, #02-51 to #13-51

MIRROR IMAGE  
 #02-26 to #11-26, #02-30 to #11-30, #02-34 to #11-34,  
 #02-38 to #12-38, #02-42 to #12-42, #02-52 to #13-52

**TYPE E1α: 3 – BEDROOM + STUDY**

128 sq m / 1378 sq ft  
 #02-37 to #12-37

The above plans are subject to change as may be approved by the relevant authority.  
 Areas are approximate measurements and subject to final survey. Plans are not to scale.



**TYPE F1: 4 – BEDROOM**

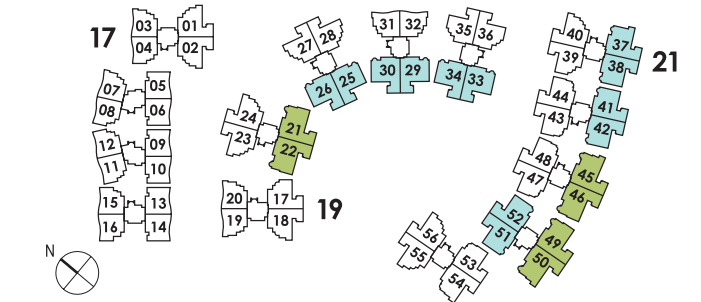
144 sq m / 1550 sq ft  
 #02-21 to #11-21, #04-49 to #12-49

MIRROR IMAGE  
 #02-22 to #11-22, #04-46 to #12-46

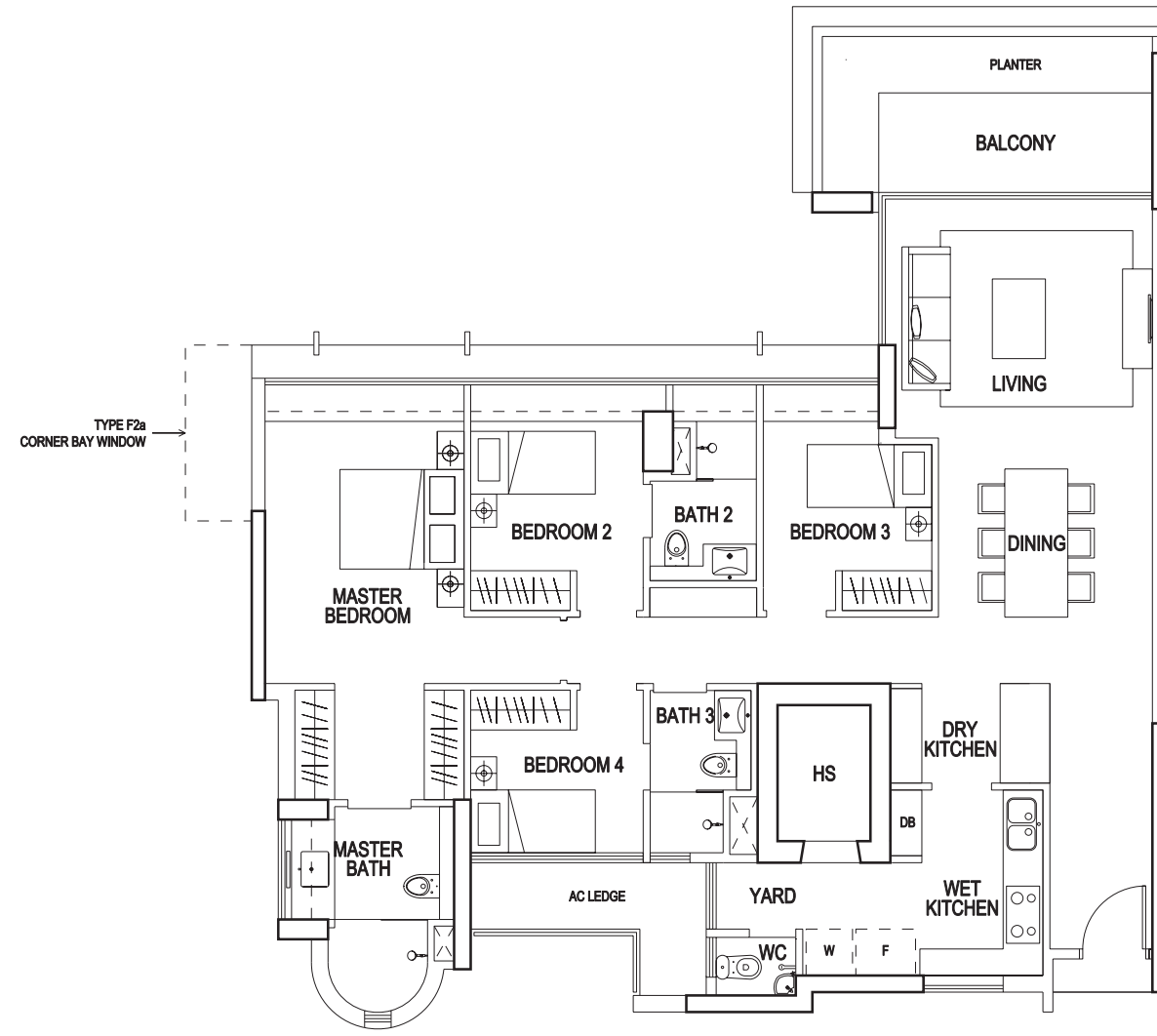
**TYPE F1α: 4 – BEDROOM**

145 sq m / 1561 sq ft  
 #04-45 to #12-45

MIRROR IMAGE  
 #04-50 to #12-50



The above plans are subject to change as may be approved by the relevant authority.  
 Areas are approximate measurements and subject to final survey. Plans are not to scale.



**TYPE F2: 4 – BEDROOM**

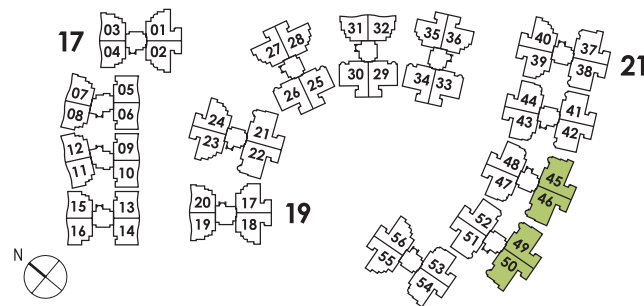
144 sq m / 1550 sq ft  
#03-49

MIRROR IMAGE  
#03-46

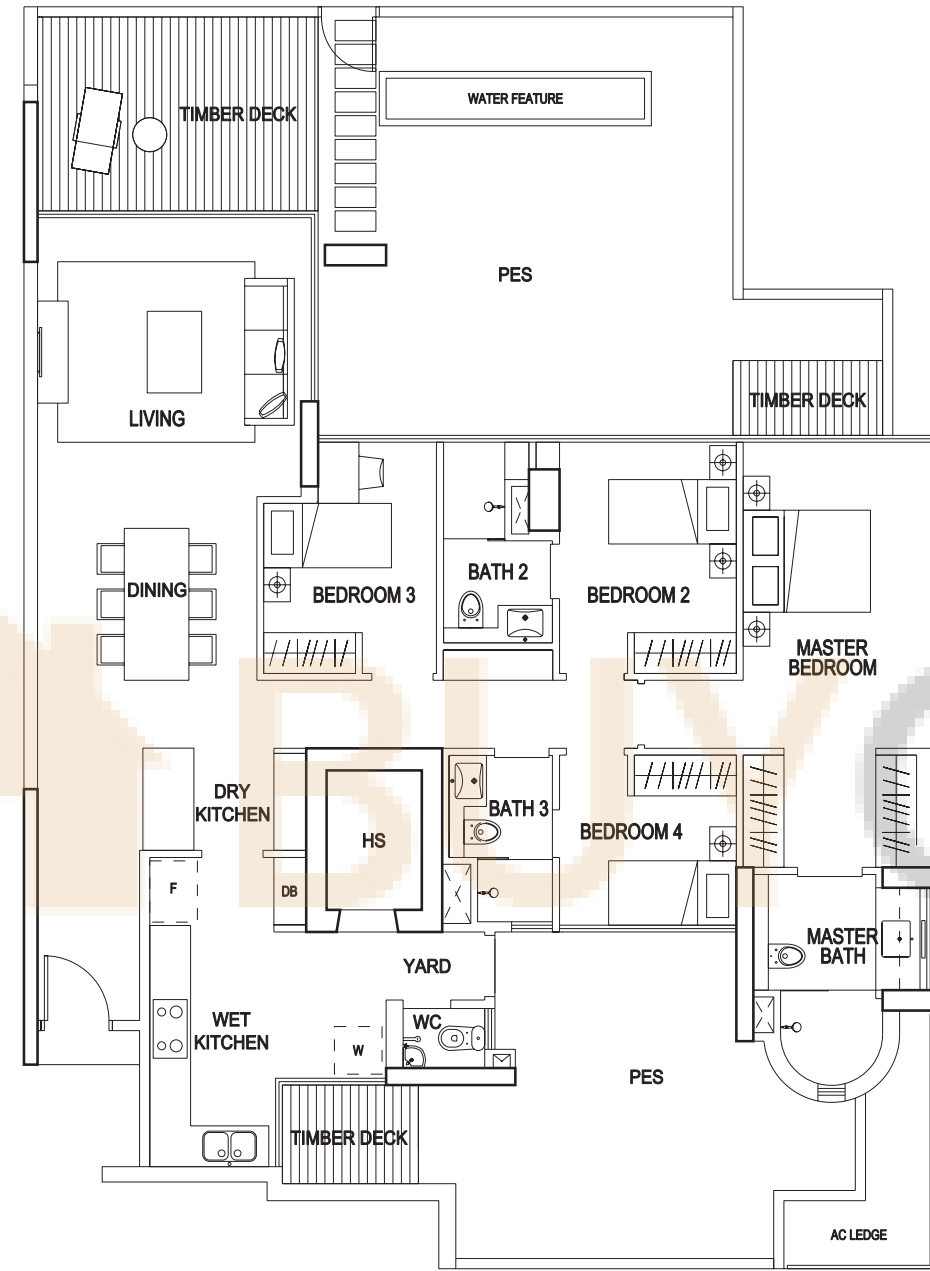
**TYPE F2a: 4 – BEDROOM**

145 sq m / 1561 sq ft  
#03-45

MIRROR IMAGE  
#03-50



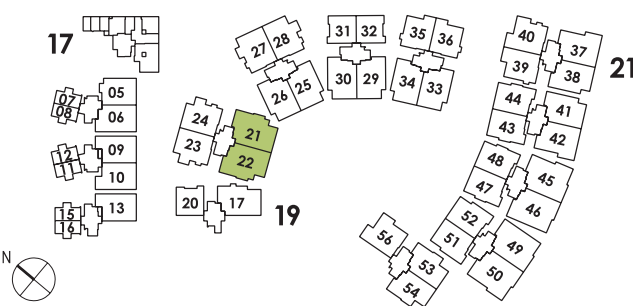
The above plans are subject to change as may be approved by the relevant authority. Areas are approximate measurements and subject to final survey. Plans are not to scale.



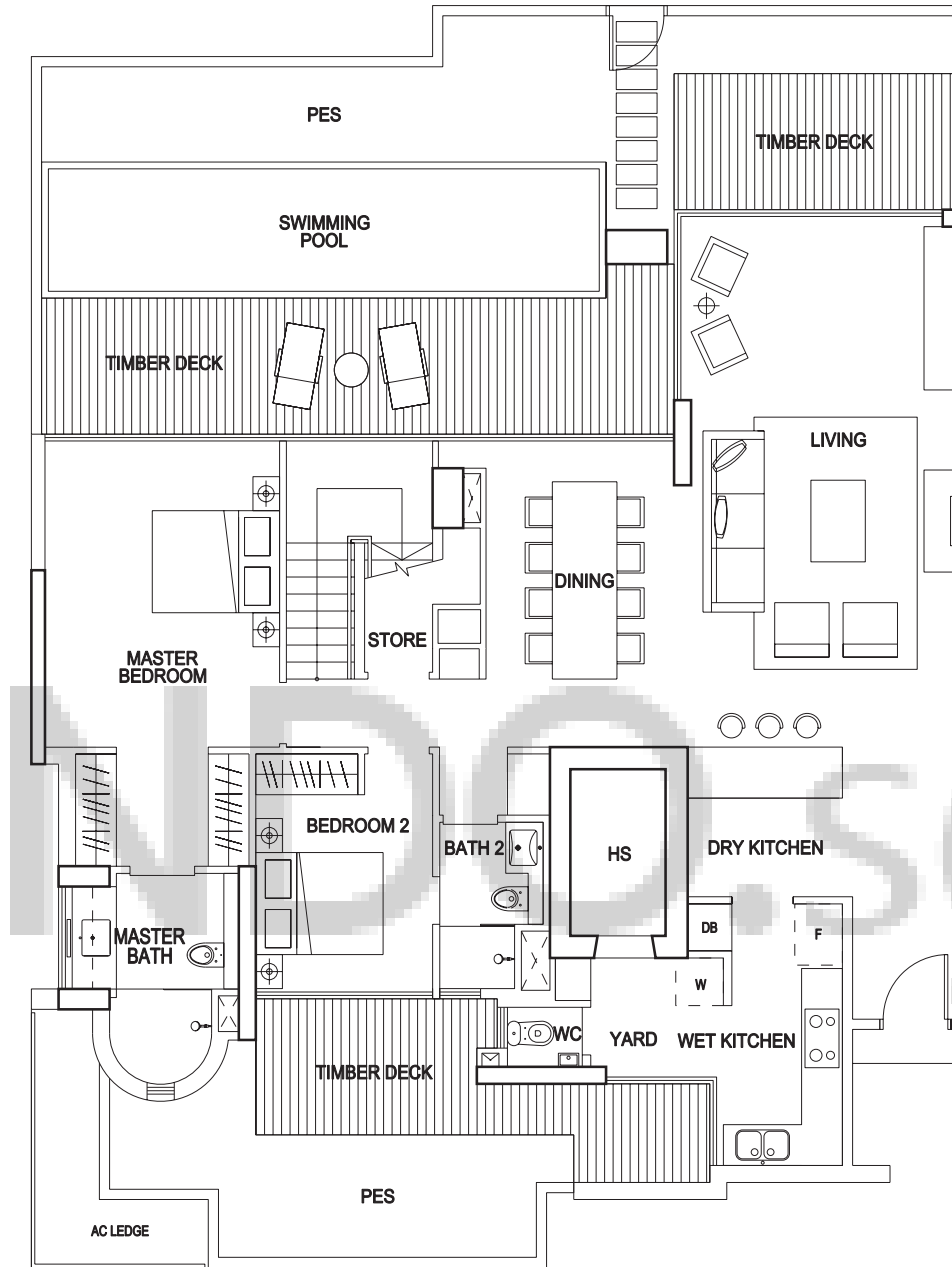
**TYPE FG1: 4 – BEDROOM**

221 sq m / 2379 sq ft  
#01-22

MIRROR IMAGE  
#01-21



The above plans are subject to change as may be approved by the relevant authority. Areas are approximate measurements and subject to final survey. Plans are not to scale.

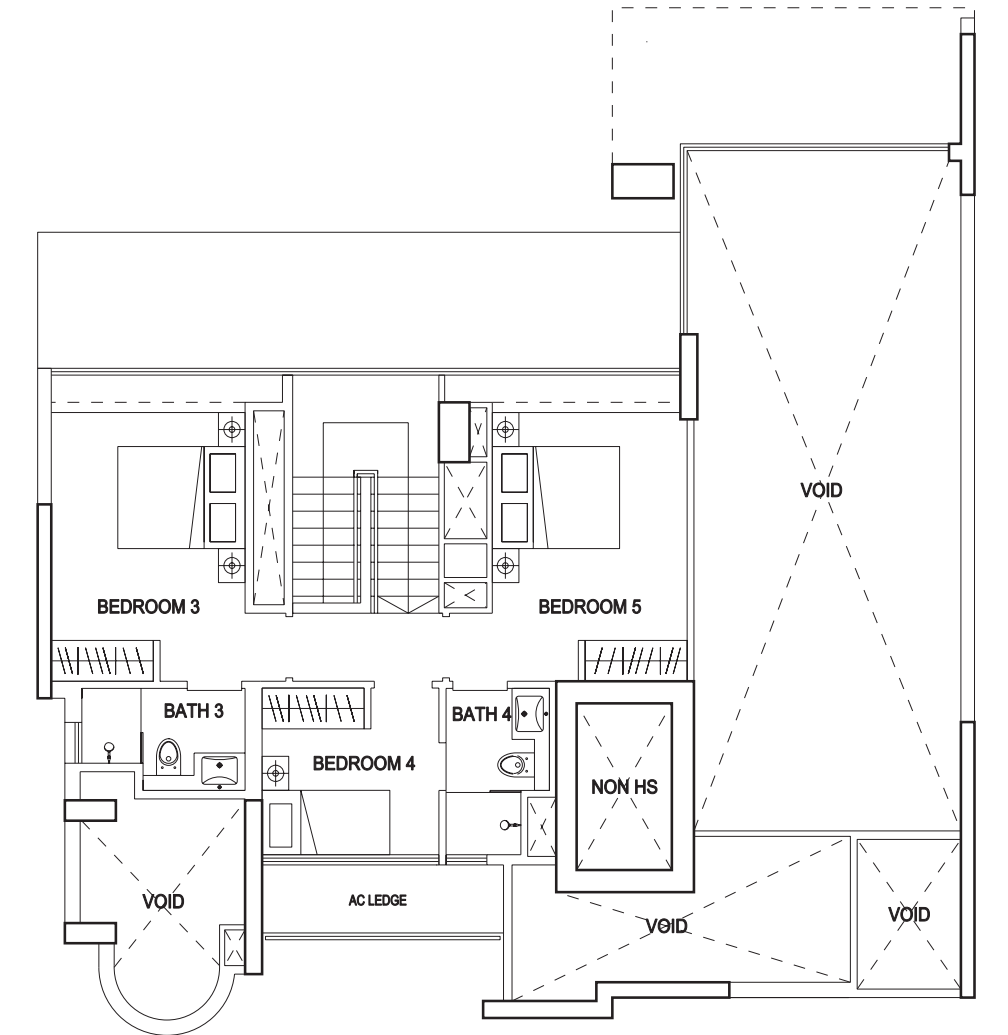


**LOWER LEVEL**

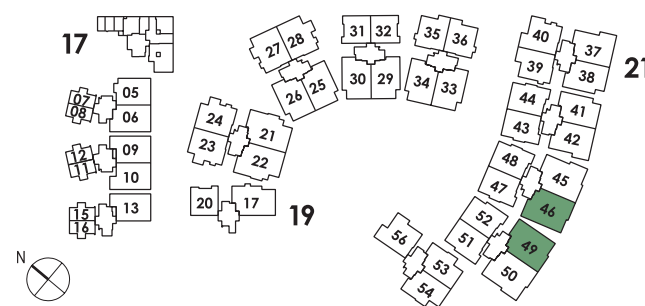
**TYPE G1: DUPLEX**

335 sq m / 3606 sq ft  
#1-49

MIRROR IMAGE  
#1-46

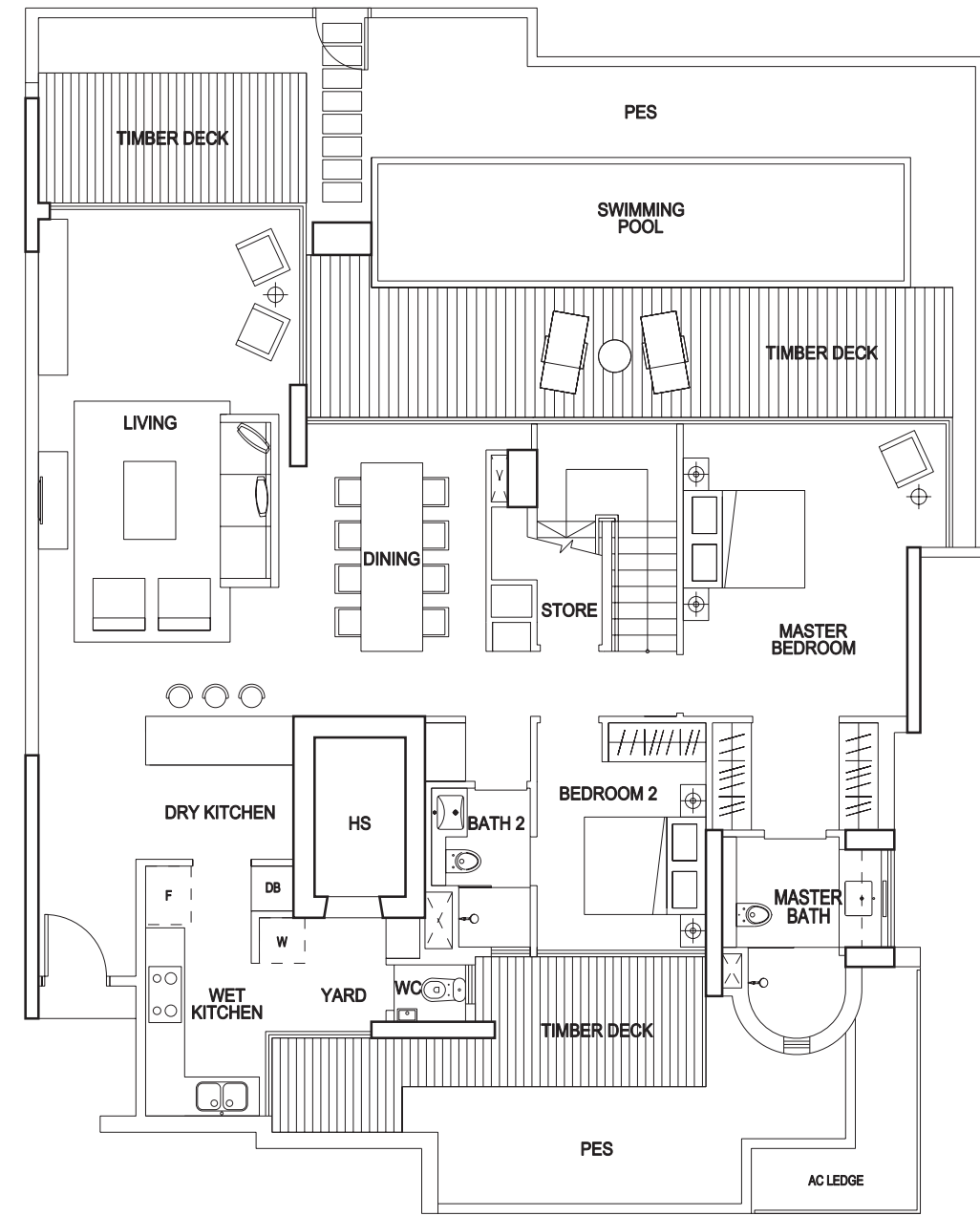


**UPPER LEVEL**



The above plans are subject to change as may be approved by the relevant authority. Areas are approximate measurements and subject to final survey. Plans are not to scale.





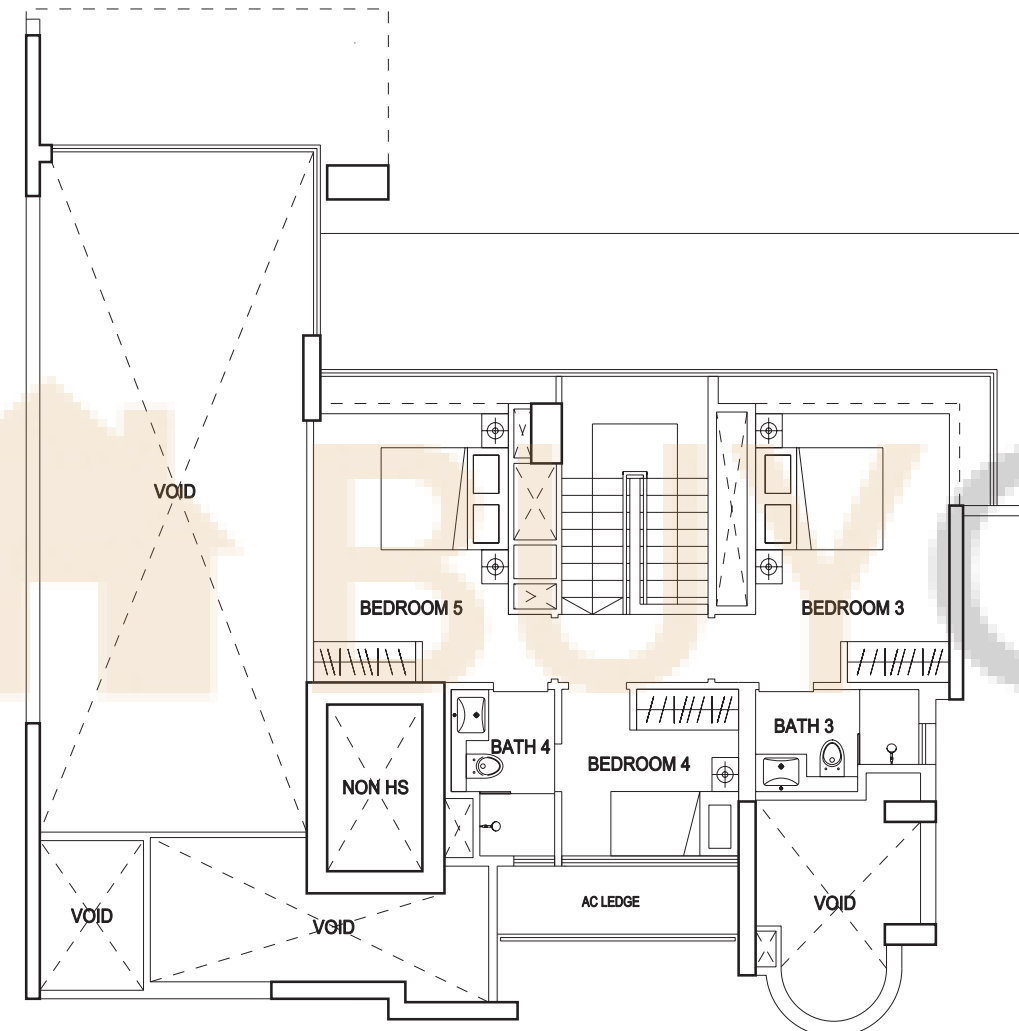
LOWER LEVEL

**TYPE G1α: DUPLEX**

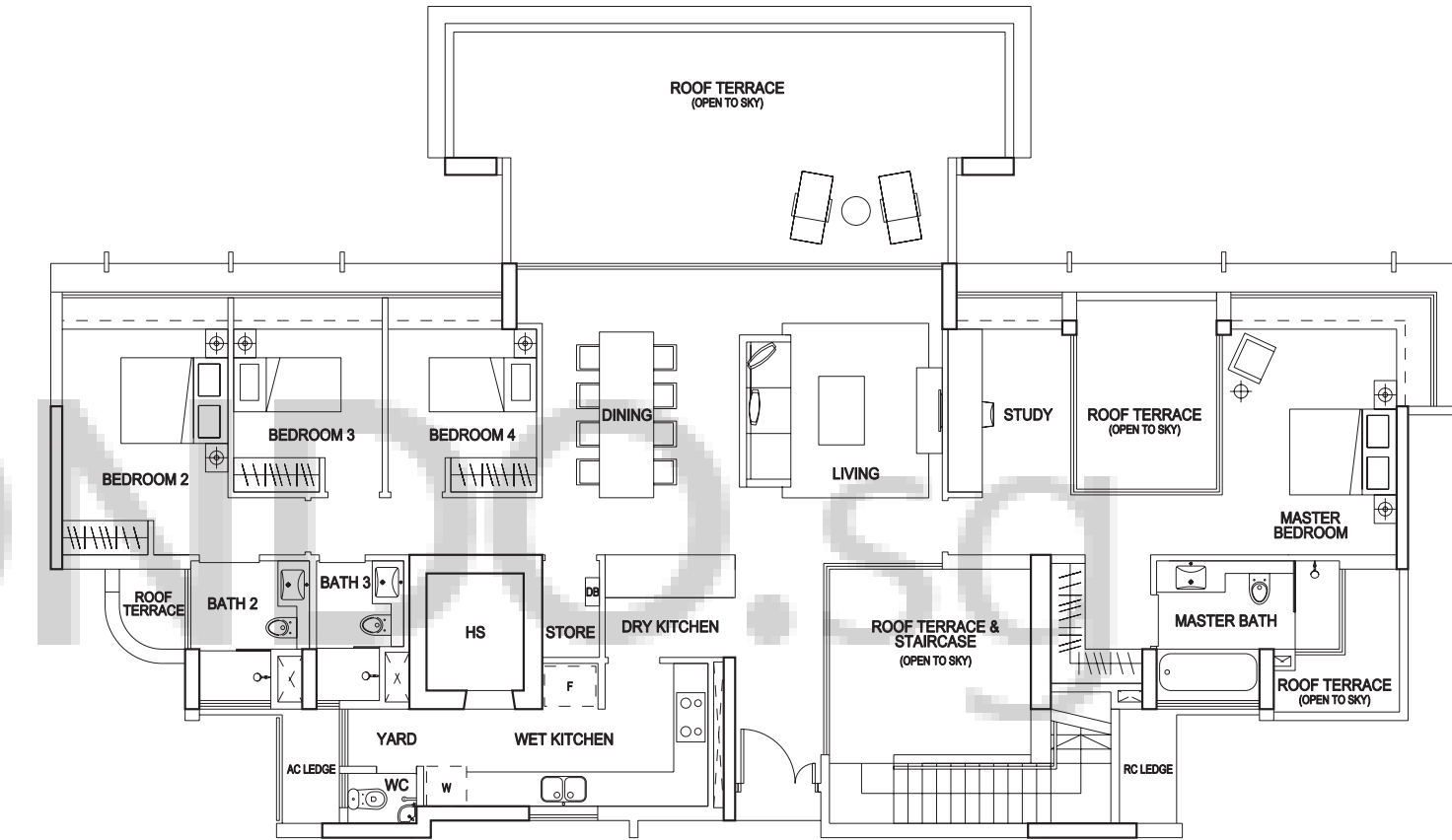
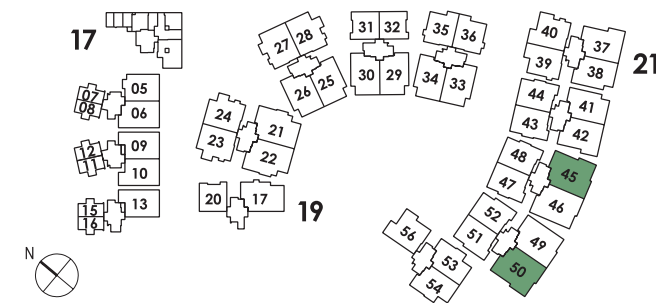
344 sq m / 3703 sq ft  
#1-50

MIRROR IMAGE  
#1-45

The above plans are subject to change as may be approved by the relevant authority.  
Areas are approximate measurements and subject to final survey. Plans are not to scale.



UPPER LEVEL

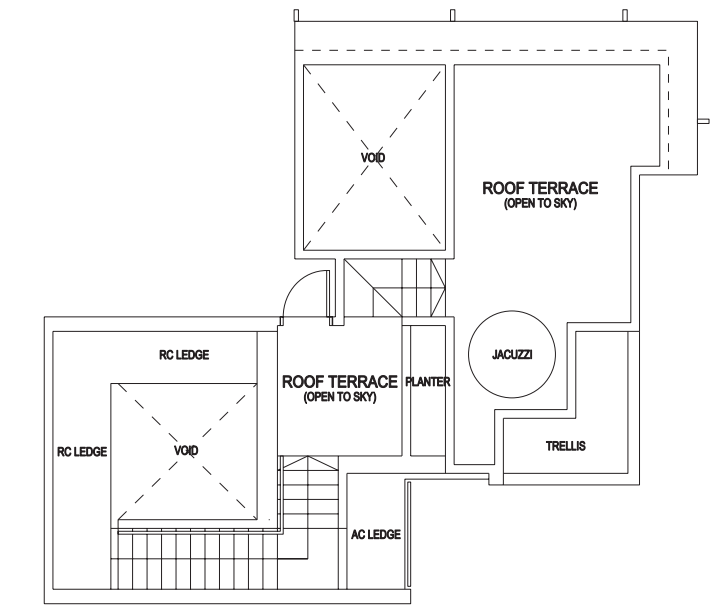


LOWER LEVEL

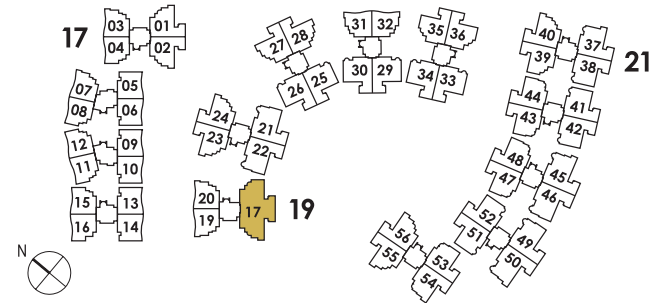
**TYPE P1: PENTHOUSE**

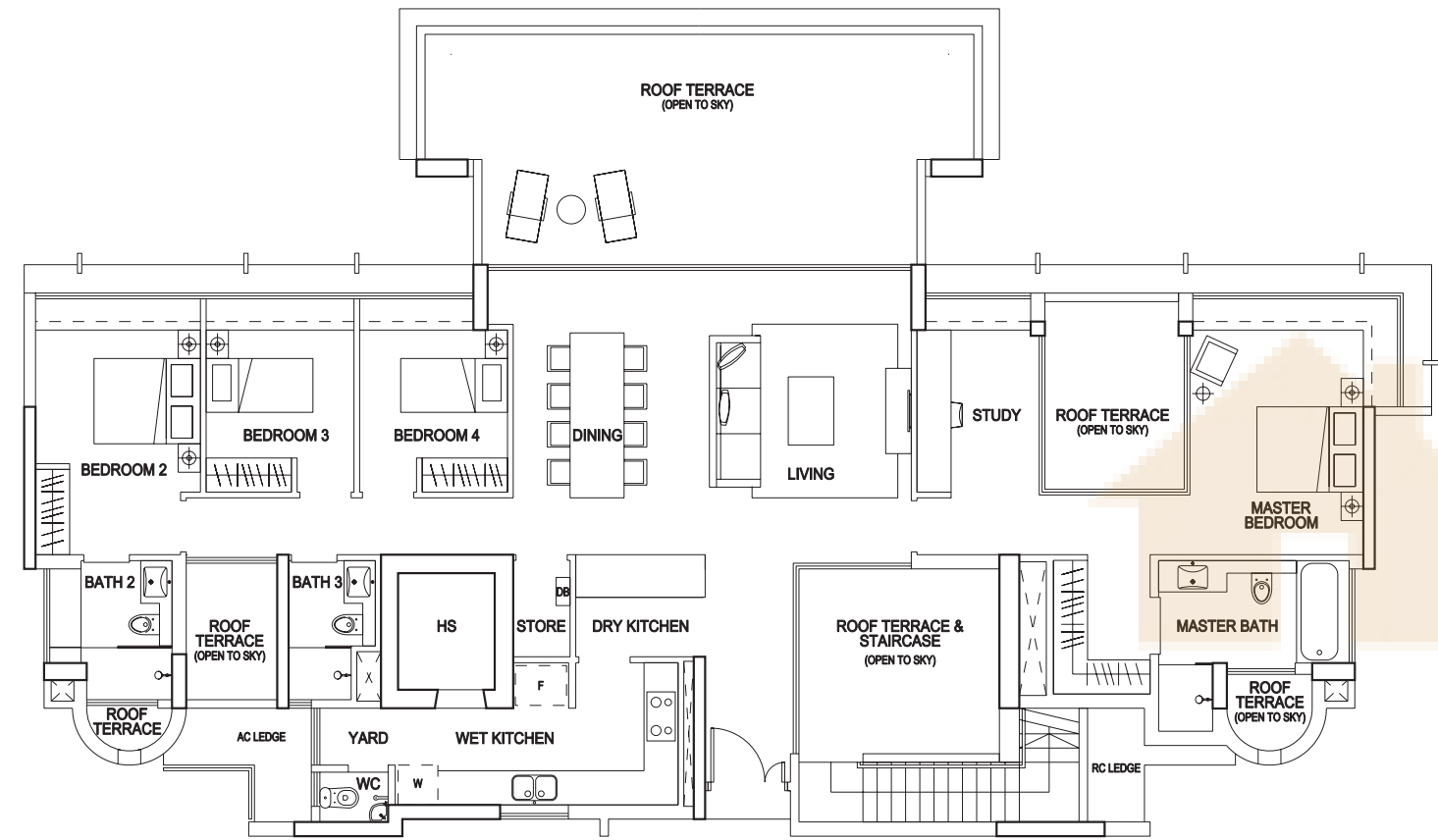
277 sq m / 2982 sq ft  
#12-17

The above plans are subject to change as may be approved by the relevant authority.  
Areas are approximate measurements and subject to final survey. Plans are not to scale.



UPPER LEVEL

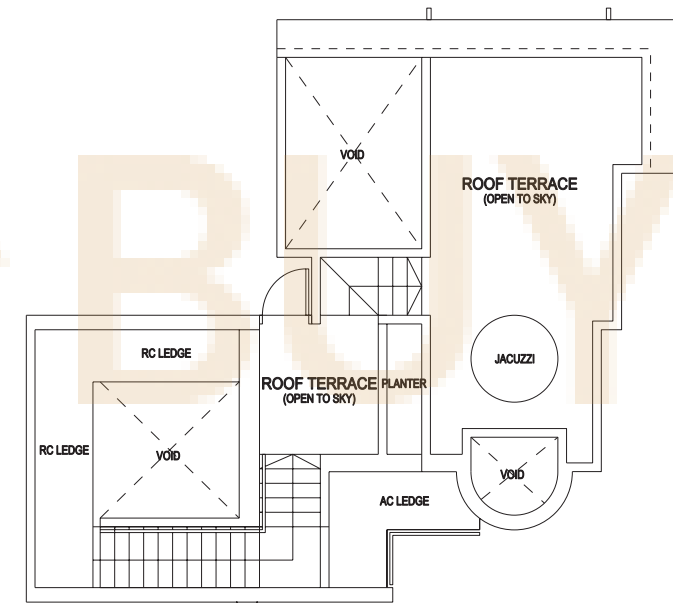




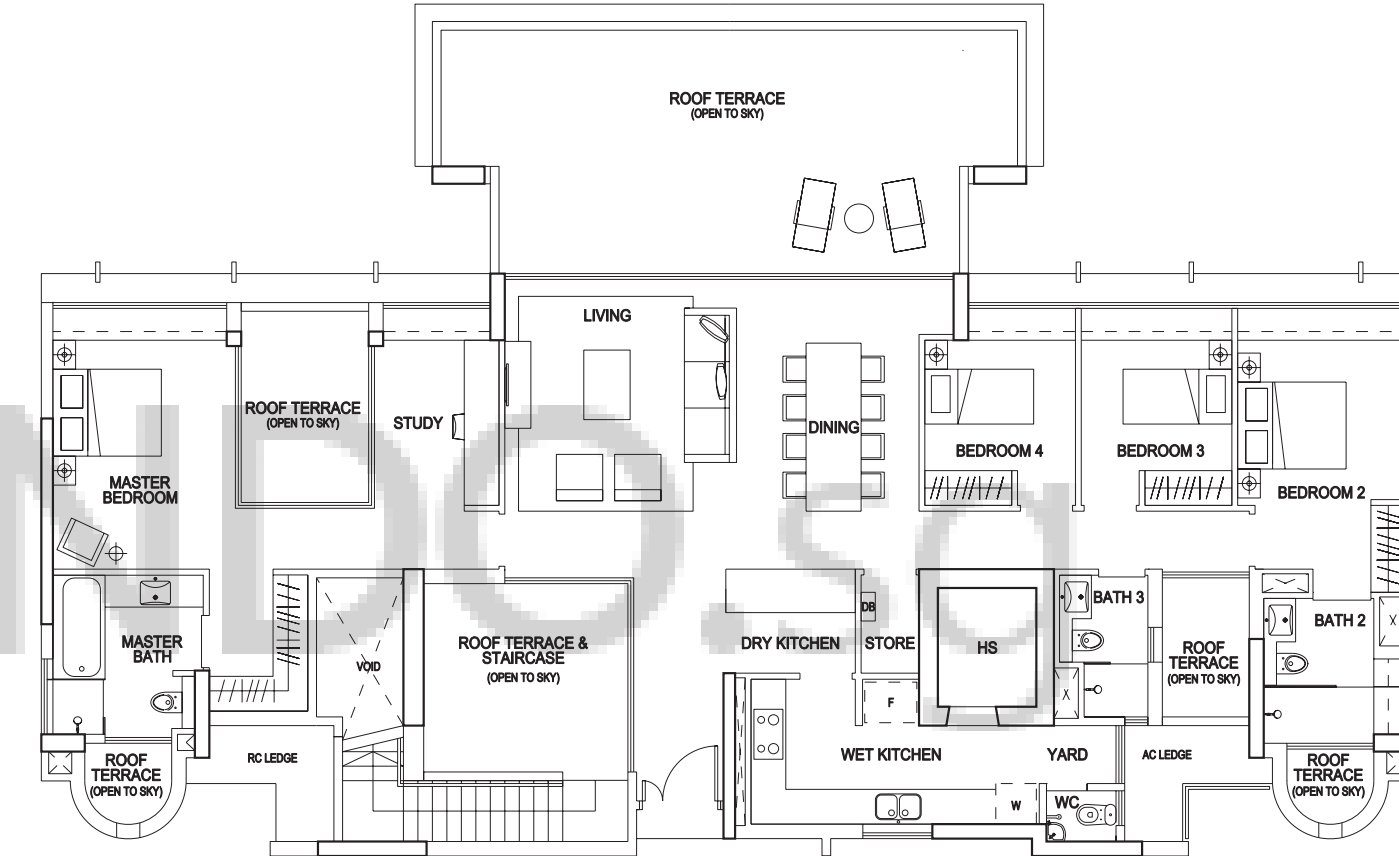
LOWER LEVEL

**TYPE P2: PENTHOUSE**

284 sq m / 3057 sq ft  
#13-54



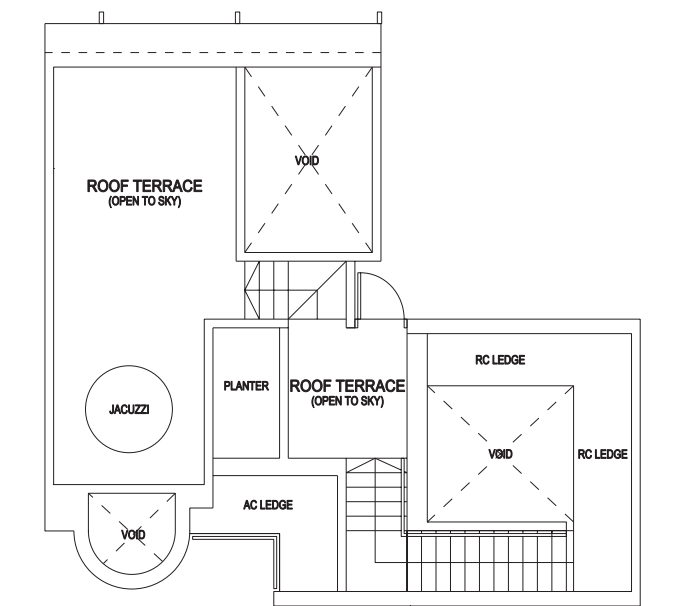
UPPER LEVEL



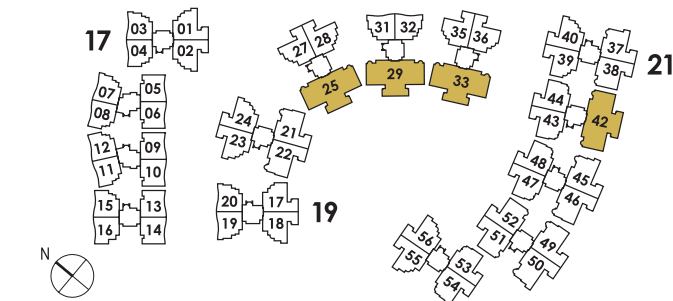
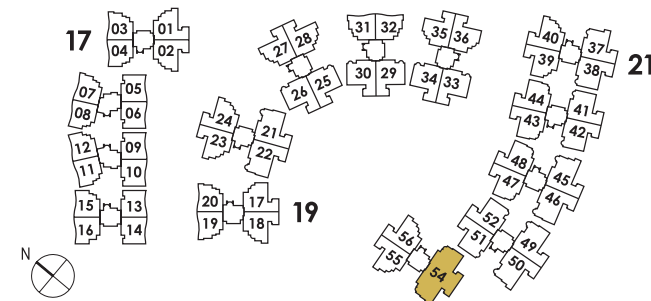
LOWER LEVEL

**TYPE P3: PENTHOUSE**

289 sq m / 3111 sq ft  
#12-25, #12-29, #12-33, #13-42

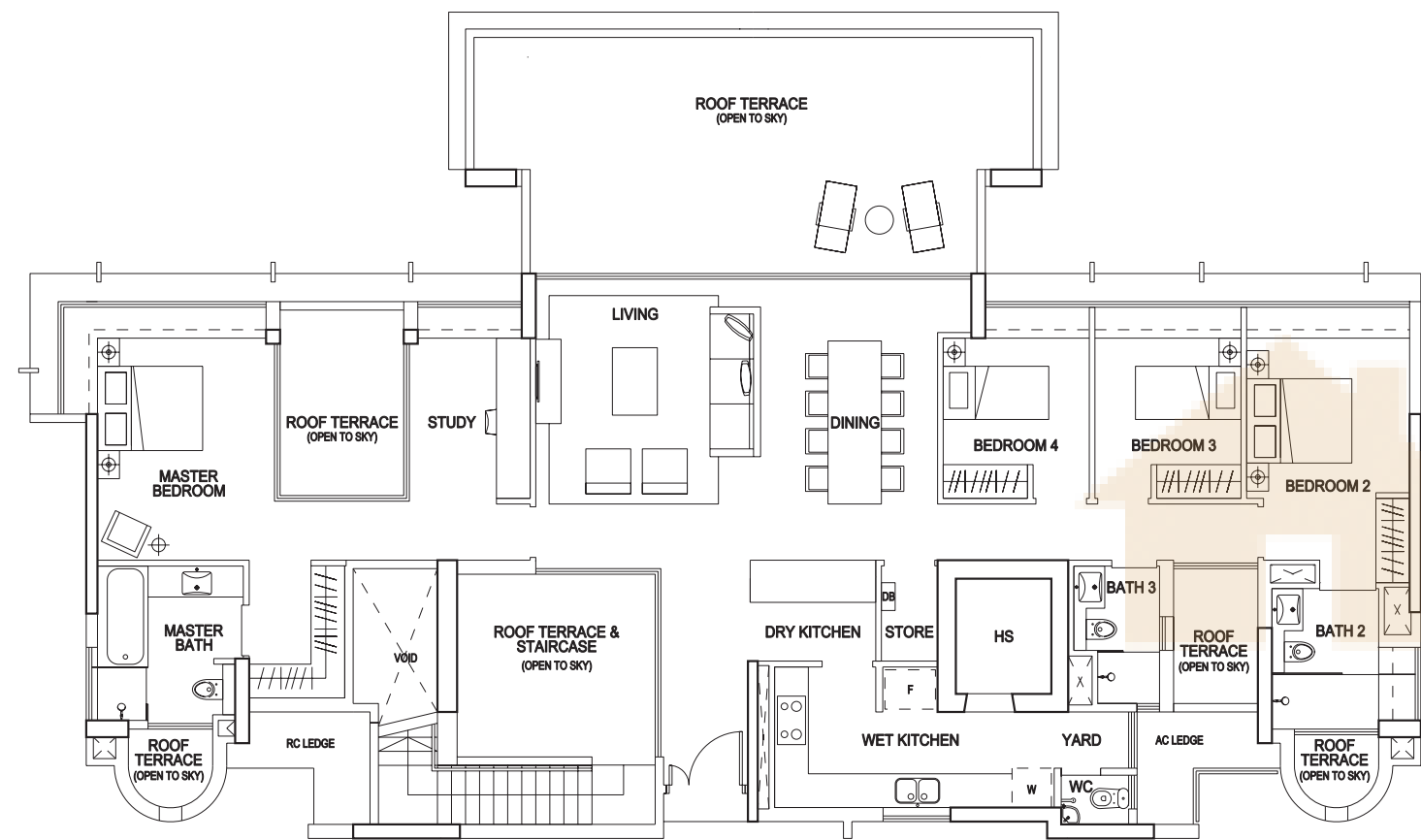


UPPER LEVEL



The above plans are subject to change as may be approved by the relevant authority. Areas are approximate measurements and subject to final survey. Plans are not to scale.

The above plans are subject to change as may be approved by the relevant authority. Areas are approximate measurements and subject to final survey. Plans are not to scale.

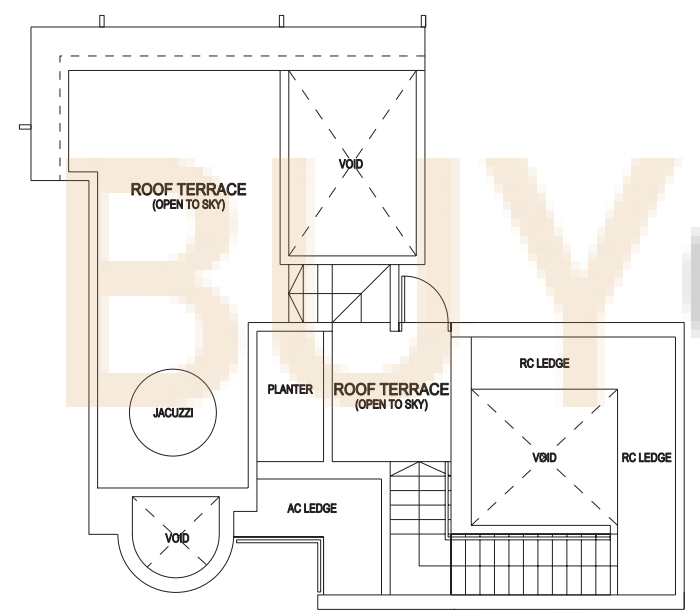


LOWER LEVEL

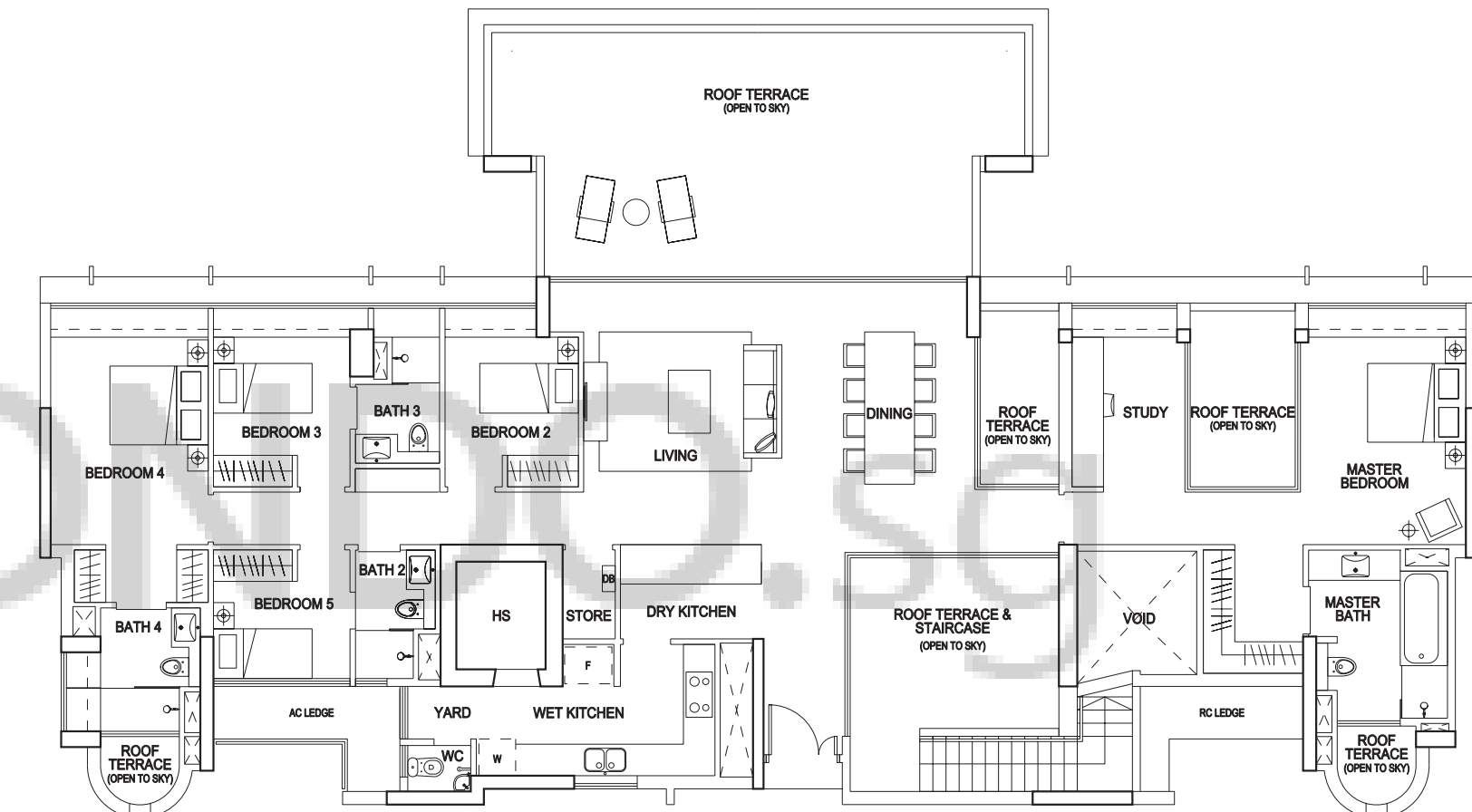
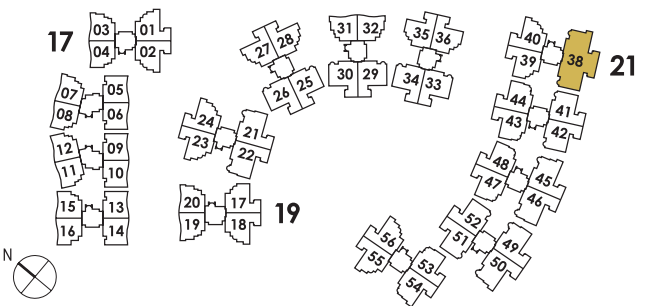
**TYPE P3a: PENTHOUSE**

292 sq m / 3143 sq ft  
#13-38

The above plans are subject to change as may be approved by the relevant authority. Areas are approximate measurements and subject to final survey. Plans are not to scale.



UPPER LEVEL

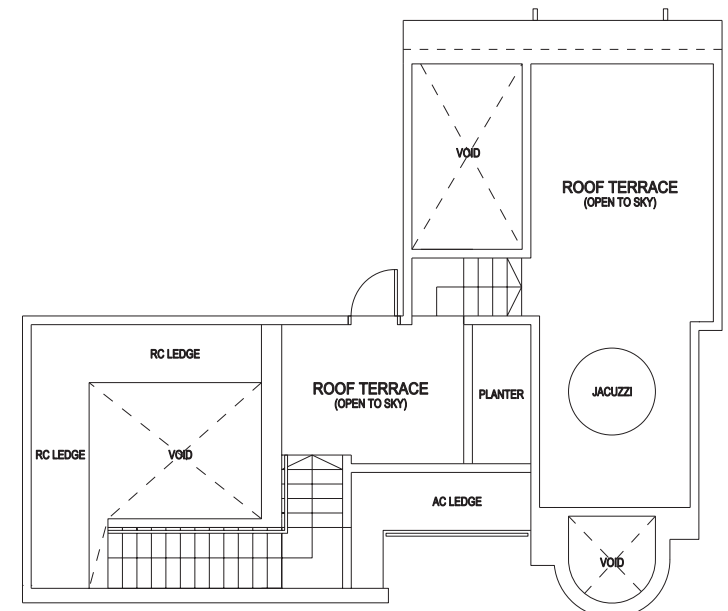


LOWER LEVEL

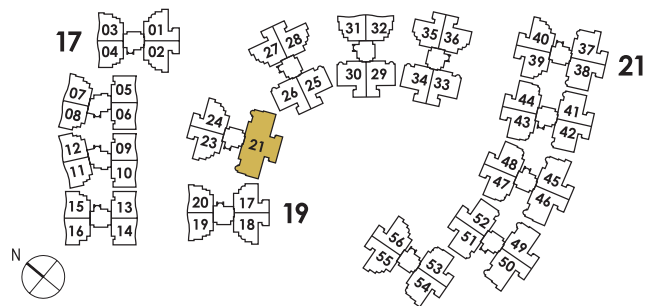
**TYPE P4: PENTHOUSE**

322 sq m / 3466 sq ft  
#12-21

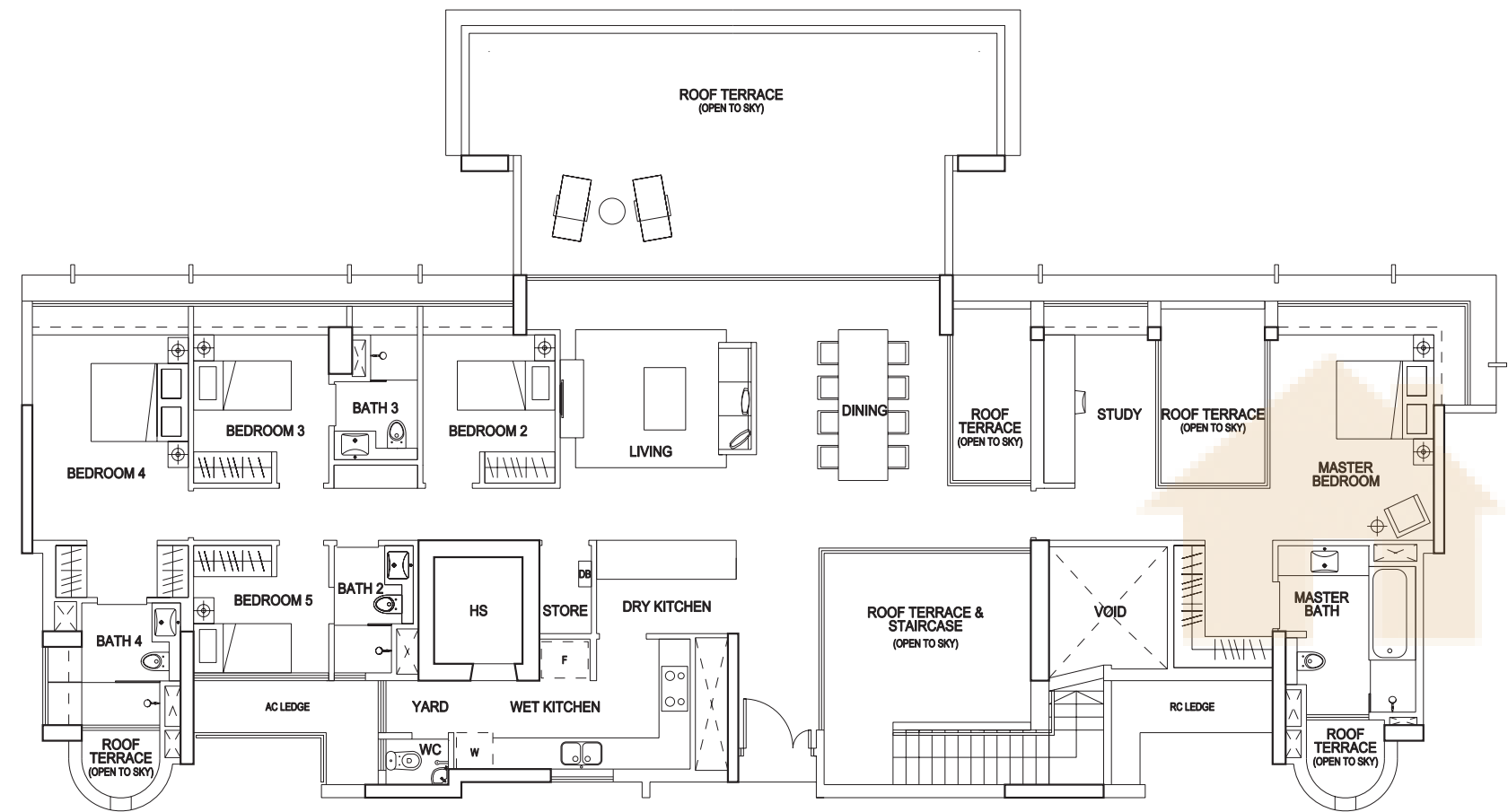
The above plans are subject to change as may be approved by the relevant authority. Areas are approximate measurements and subject to final survey. Plans are not to scale.



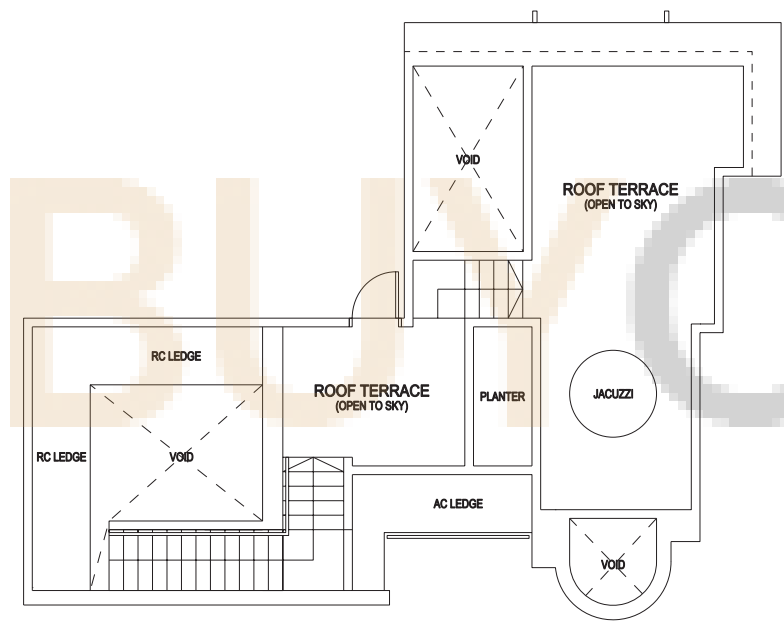
UPPER LEVEL







LOWER LEVEL

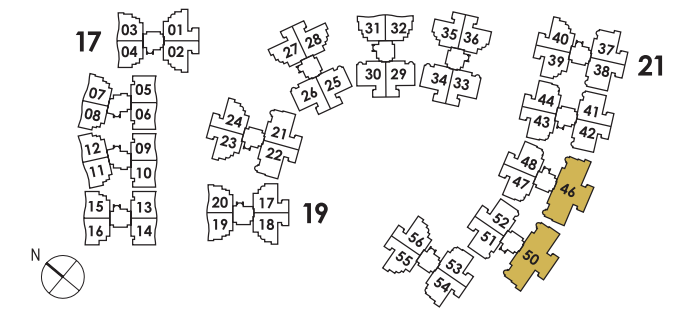


UPPER LEVEL

**TYPE P4a: PENTHOUSE**

324 sq m / 3488 sq ft  
#13-50

MIRROR IMAGE  
#13-46



The above plans are subject to change as may be approved by the relevant authority. Areas are approximate measurements and subject to final survey. Plans are not to scale.

Developer: Secure Venture Development (Simej) Pte Ltd • Co. Reg. no.: 200802034C • Developer's Licence no.: C0504 • Lot. No.: 6898T of Mukim 28 • Planning approval no. ES20080327R0172 dated 30 October 2008 • BP no. A0901-00001-2008-BP01 dated 24 December 2008 • Tenure of Land: 99 years w.e.f. 7 April 2008 • Expected date of TOP: 30 June 2015 • Expected date of Legal completion: 30 June 2018

The information contained herein is subject to changes as may be approved by the relevant authorities and cannot form part of an offer or contract. Illustrations and graphics in the brochure are artist's impressions and serve only to provide an approximate perspective of the project and cannot be regarded as representations of fact. While every reasonable care has been taken in providing the information and specifications in this brochure, including the floor plans and attendant areas, neither the Developer nor its agents can be held responsible for any inaccuracies. All statements are correct but are not regarded as representations of fact. All plans are subject to any amendments approved or to be approved by the relevant authorities. The materials and finishings to be used are subject to changes and availability. Floor areas are approximate measurements and are subject to final survey. All specifications are current at the time of printing (in respect of all brochures) and at the time of construction. The model and the showflat are subject to changes as may be required or approved by the relevant authorities and may not have been shown in the showflat.