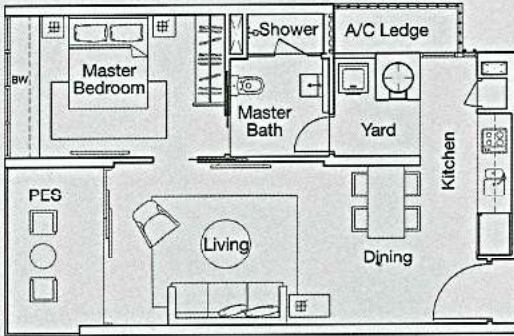


Type (1)a1

Unit #01-21**, #01-24, #01-28 & #01-59
 Area 700 sqft / 65 sqm

(Inclusive of A/C Ledge, Bay Window [BW] & PES)

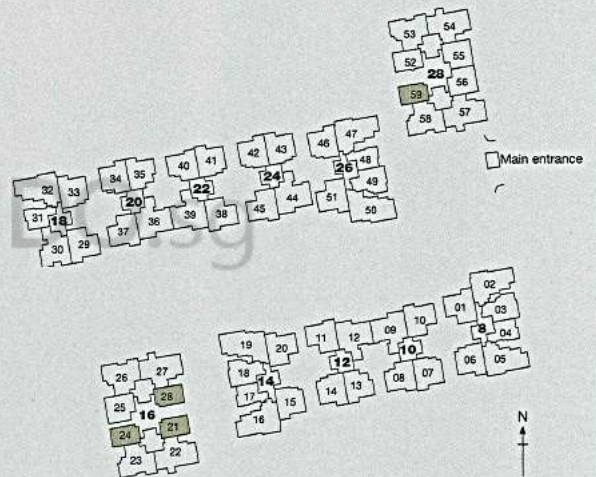
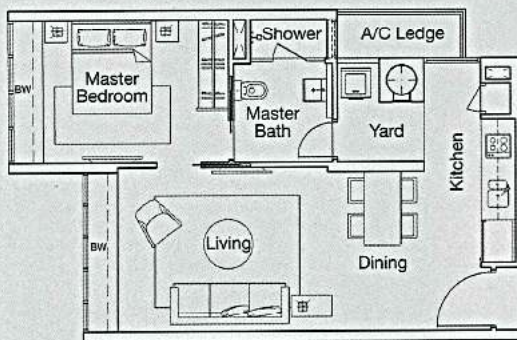


Type (1)a

Unit #02-21 to #08-21**, #02-24 to #08-24,
 #02-28 to #08-28 & #02-59 to #08-59

Area 646 sqft / 60 sqm

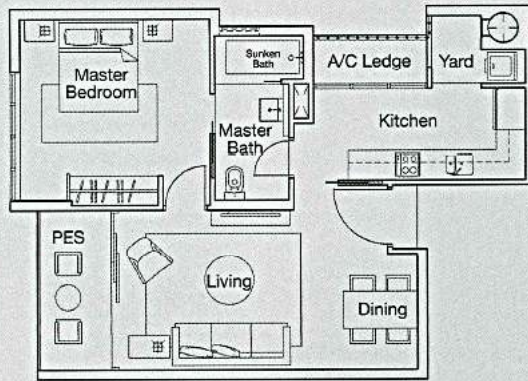
(inclusive of A/C Ledge & Bay Windows [BW])



**Units with mirror image.

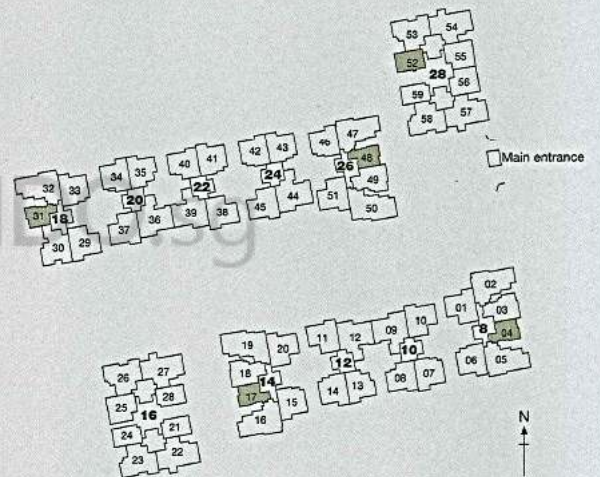
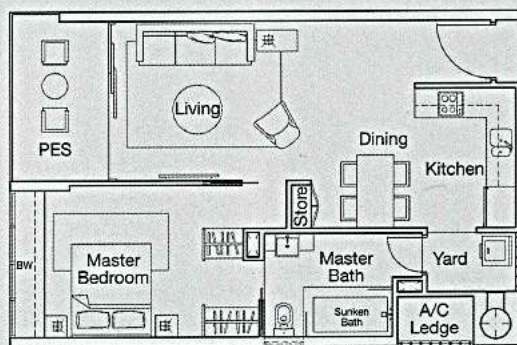
Type (1)b1

Unit #01-04, #01-17**, #01-31 & #01-48**
 Area 689 sqft / 64 sqm
 (inclusive of A/C Ledge & PES)



Type (1)c1

Unit #01-52
 Area 721 sqft / 67 sqm
 (inclusive of A/C Ledge, Bay Window [BW] & PES)



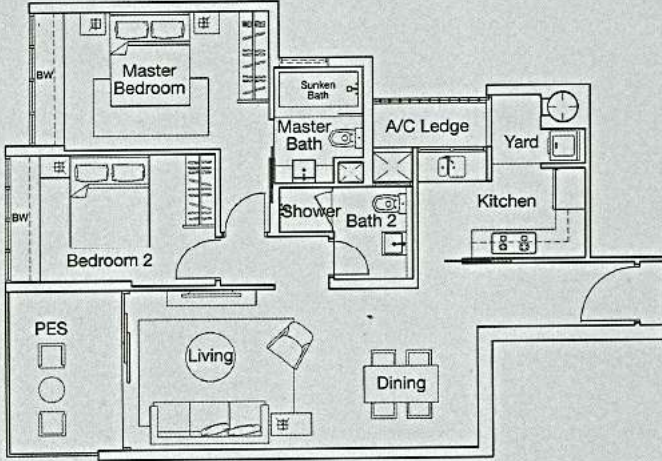
**Units with mirror image.

Type (2)a1

Unit #01-03**, #01-18 & #01-49

Area 980 sqft / 91 sqm

(inclusive of A/C Ledge, Bay Windows [BW] & PES)

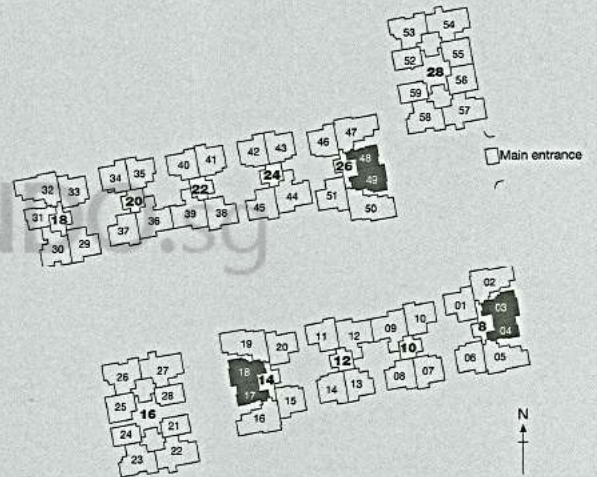
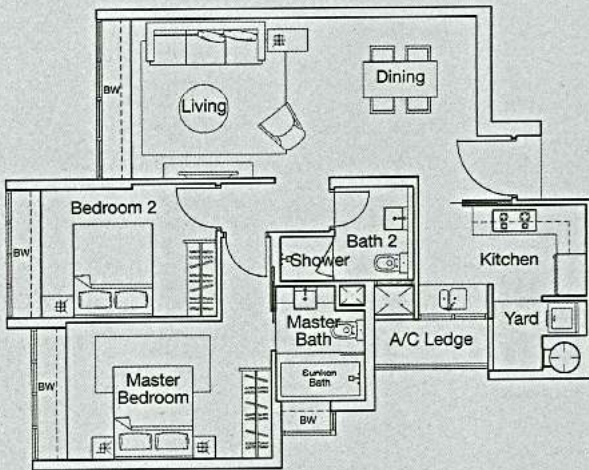


Type (2)a

Unit #02-04 to #08-04**, #02-17 to #08-17 & #02-48 to #08-48

Area 883 sqft / 82 sqm

(inclusive of A/C Ledge & Bay Windows [BW])



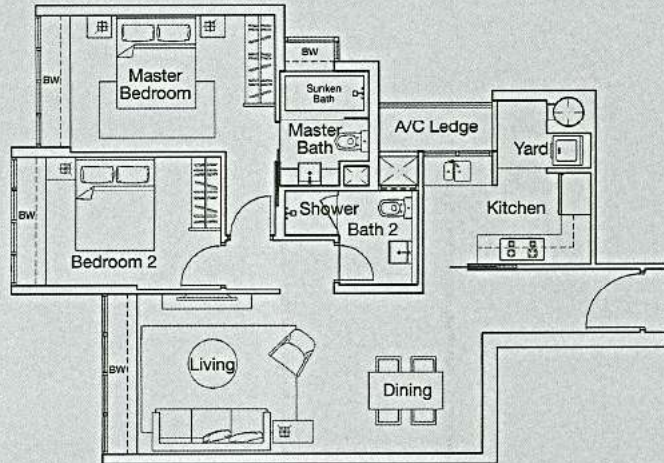
**Units with mirror image.

Type (2)a-D

Unit #02-03 to #08-03**, #02-18 to #08-18,
#02-31 to #08-31 & #02-49 to #08-49

Area 915 sqft / 85 sqm

(inclusive of A/C Ledge & Bay Windows [BW])

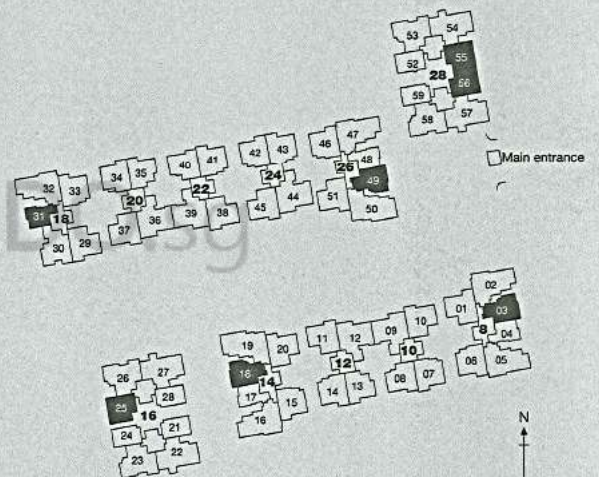
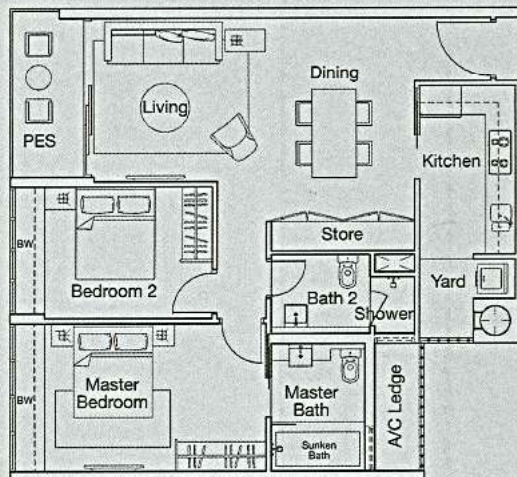


Type (2)b1

Unit #01-25, #01-55** & #01-56

Area 980 sqft / 91 sqm

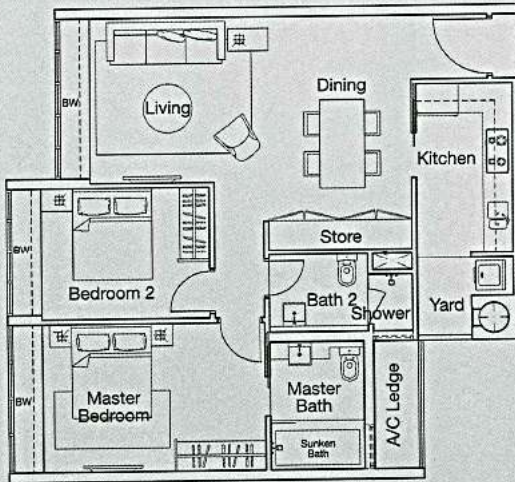
(inclusive of A/C Ledge, Bay Windows [BW] & PES)



**Units with mirror image.

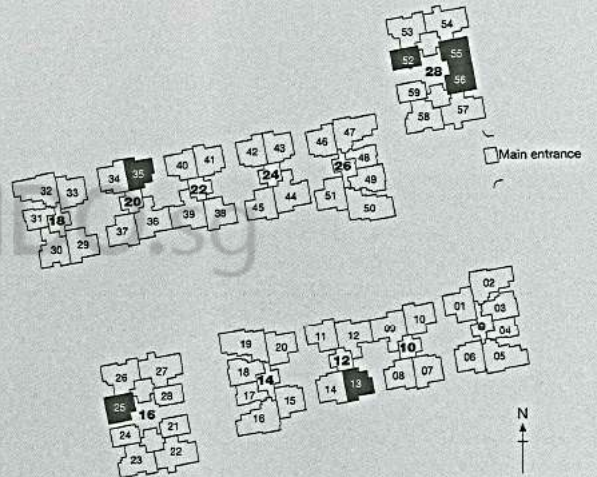
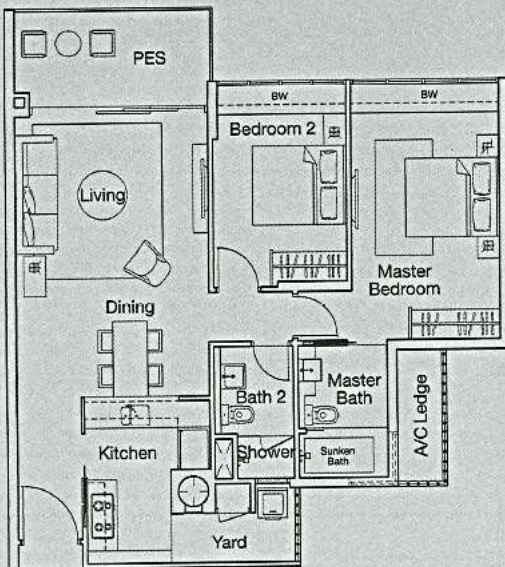
Type (2)b

Unit #02-25 to #08-25, #02-52 to #08-52,
 #02-55 to #08-55** & #02-56 to #08-56
 Area 936 sqft / 87 sqm
 (inclusive of A/C Ledge & Bay Windows [BW])



Type (2)c1

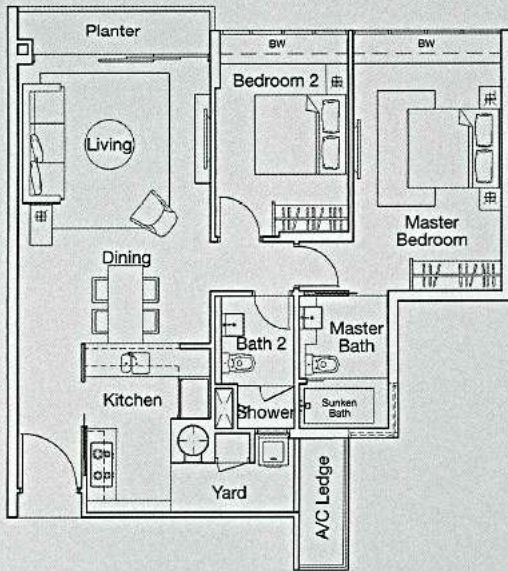
Unit #01-13** & #01-35
 Area 1,001 sqft / 93 sqm
 (inclusive of A/C Ledge, Bay Windows [BW] & PES)



**Units with mirror image.

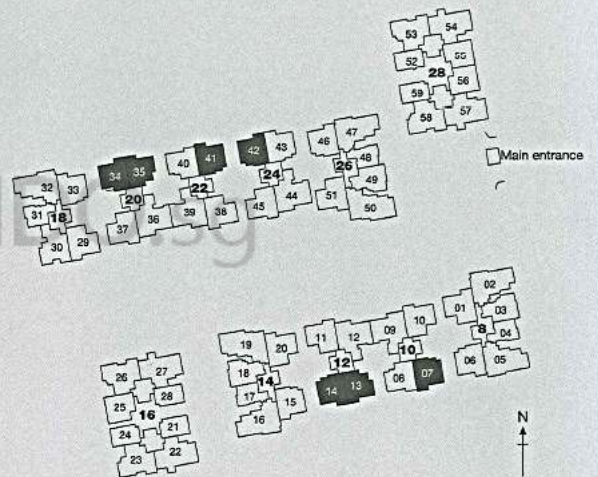
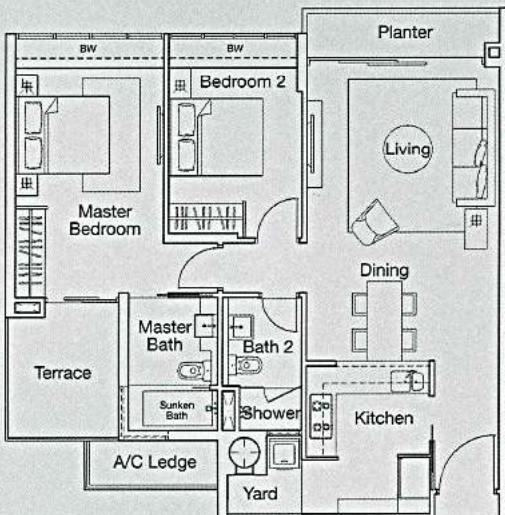
Type (2)c

Unit #02-13 to #08-13** & #02-35 to #08-35
 Area 958 sqft / 89 sqm
 (inclusive of A/C Ledge, Bay Windows [BW] & Planter)



Type (2)c-T

Unit #08-07, #08-14**, #08-34, #08-41** & #08-42
 Area 1,023 sqft / 95 sqm
 (inclusive of A/C Ledge, Bay Windows [BW], Planter & Terrace)



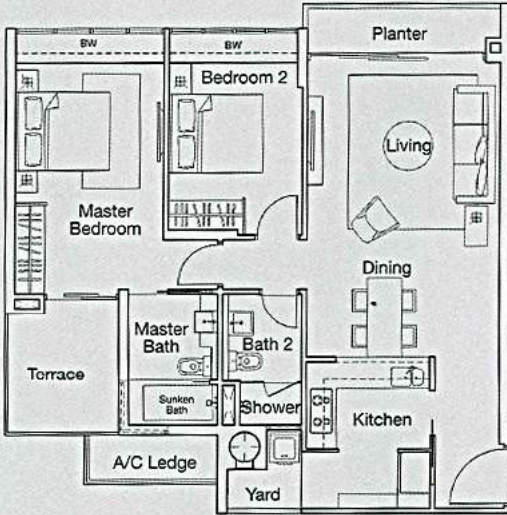
**Units with mirror image.

Type (2)c-T-D

Unit #08-06**, #08-15, #08-33** & #08-46

Area 1,023 sqft / 95 sqm

(inclusive of A/C Ledge, Bay Windows [BW], Planter & Terrace)

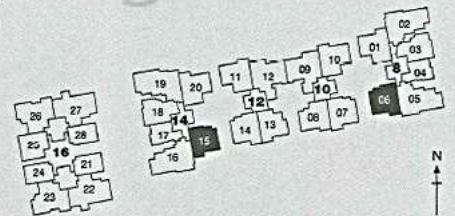
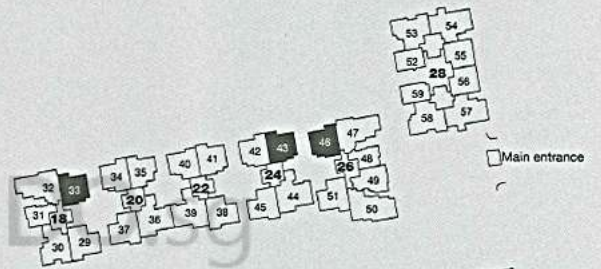
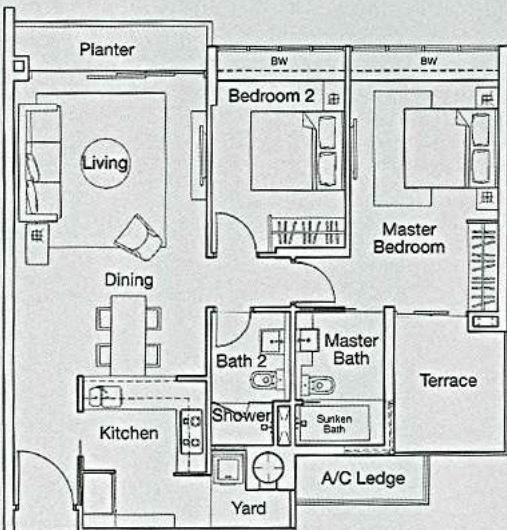


Type (2)c-T-Y

Unit #08-43

Area 1,023 sqft / 95 sqm

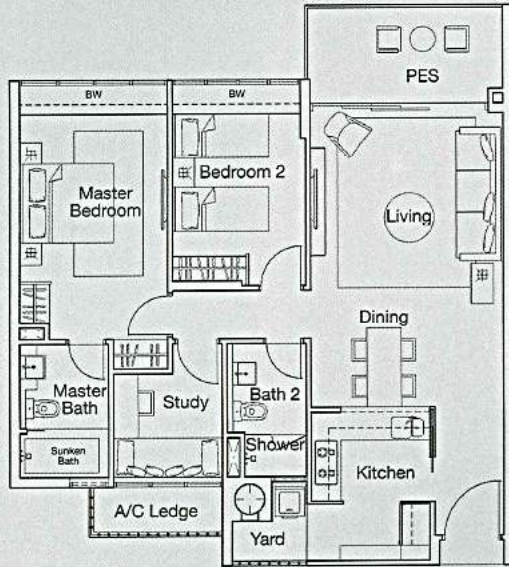
(inclusive of A/C Ledge, Bay Windows [BW], Planter & Terrace)



**Units with mirror image.

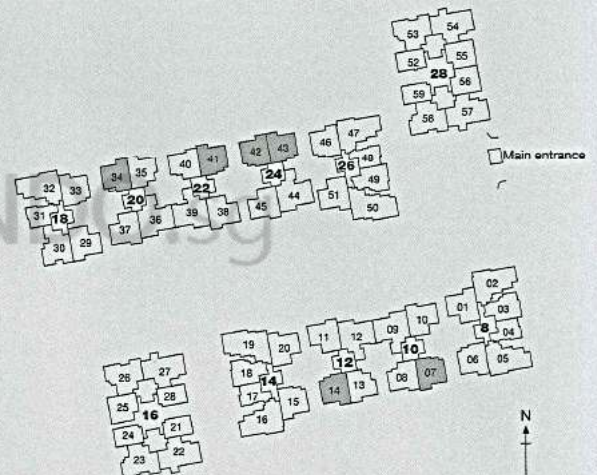
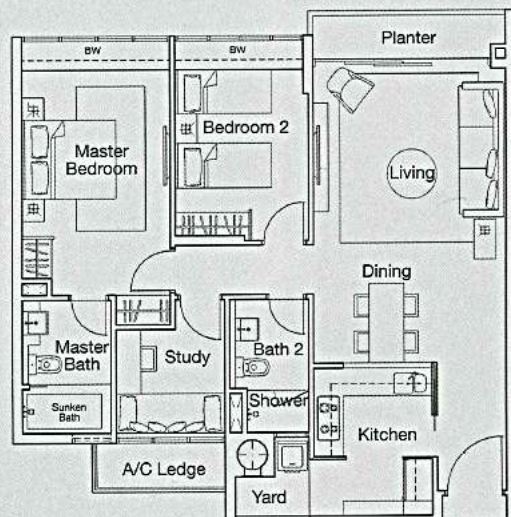
Type (2+1)a1

Unit #01-07, #01-14**, #01-34, #01-41**, #01-42 & #01-43**
 Area 1,066 sqft / 99 sqm
 (inclusive of A/C Ledge, Bay Windows [BW] & PES)



Type (2+1)a

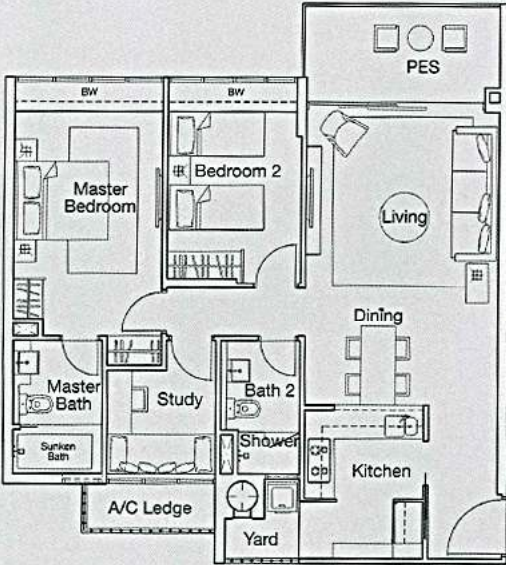
Unit #02-07 to #07-07, #02-14 to #07-14**, #02-34 to #07-34,
 #02-41 to #07-41** & #02-42 to #07-42
 Area 1,023 sqft / 95 sqm
 (inclusive of A/C Ledge, Bay Windows [BW] & Planter)



**Units with mirror image.

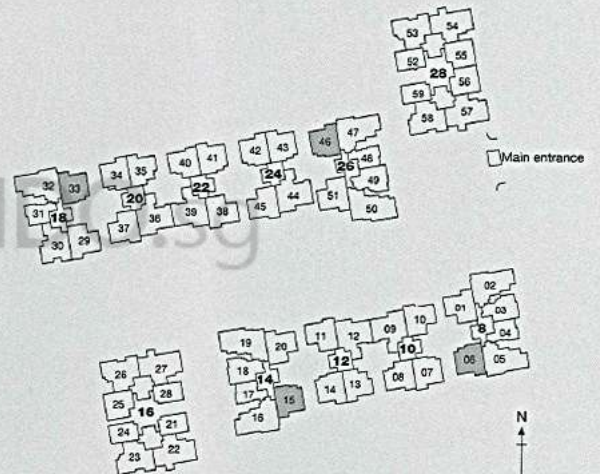
Type (2+1)a1-D

Unit #01-06**, #01-15, #01-33** & #01-46
 Area 1,066 sqft / 99 sqm
 (inclusive of A/C Ledge, Bay Windows [BW] & PES)



Type (2+1)a-D

Unit #02-06 to #07-06**, #02-15 to #07-15,
 #02-33 to #07-33** & #02-46 to #07-46
 Area 1,023 sqft / 95 sqm
 (inclusive of A/C Ledge, Bay Windows [BW] & Planter)



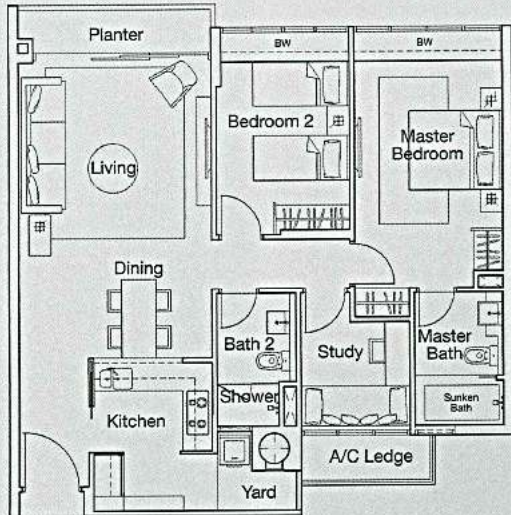
**Units with mirror image.

Type (2+1)a-Y

Unit #02-43 to #07-43

Area 1,023 sqft / 95 sqm

(inclusive of A/C Ledge, Bay Windows [BW] & Planter)

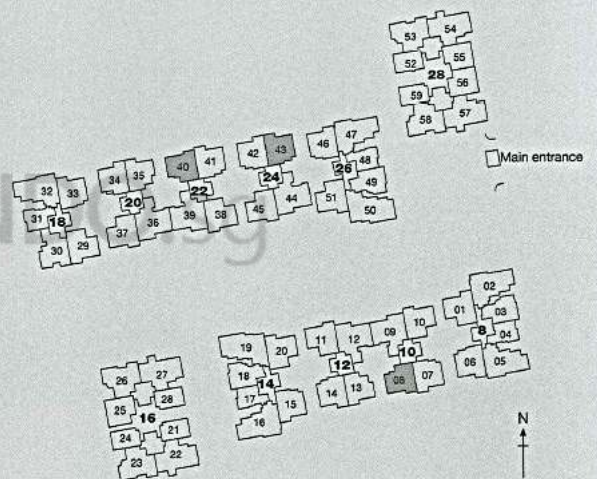
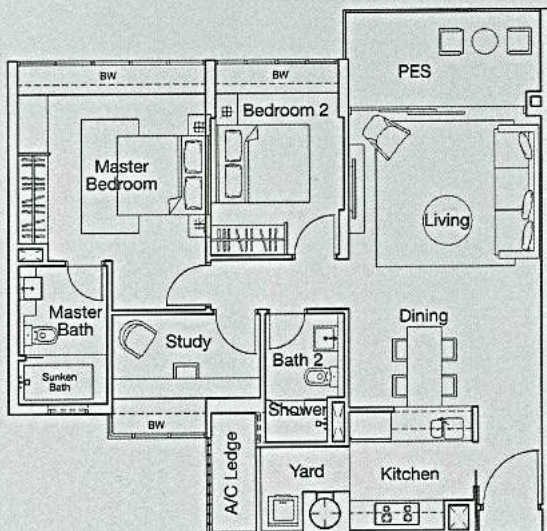


Type (2+1)b1

Unit #01-08** & #01-40

Area 1,044 sqft / 97 sqm

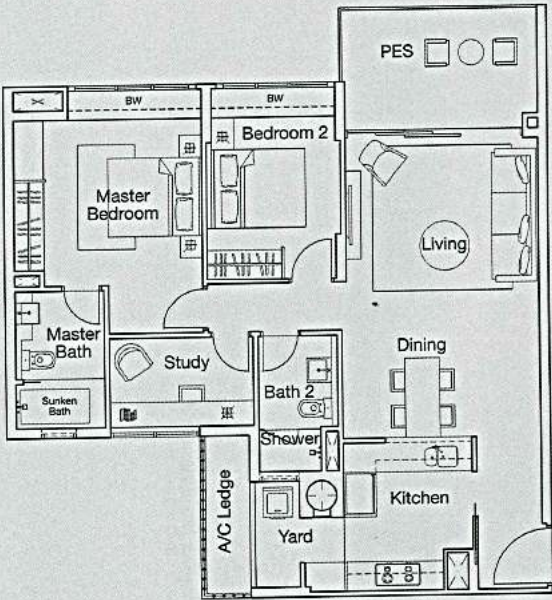
(inclusive of A/C Ledge, Bay Windows [BW] & PES)



**Units with mirror image.

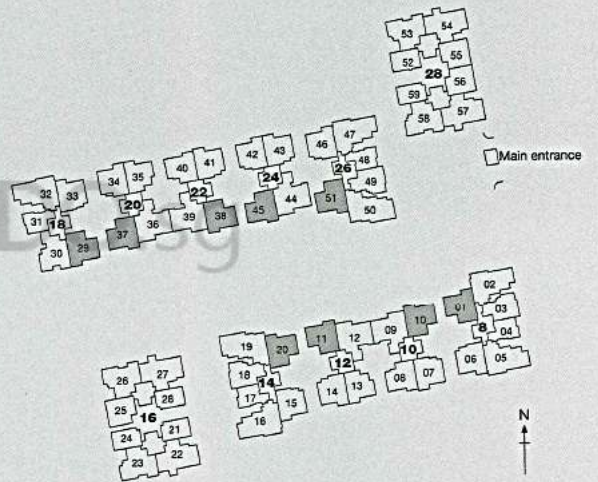
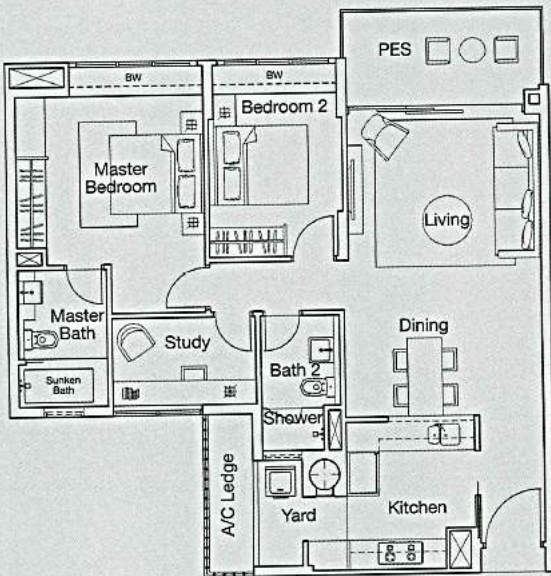
Type (2+1)c1-D

Unit #01-01, #01-20**, #01-29 & #01-51**
 Area 1,109 sqft / 103 sqm
 (inclusive of A/C Ledge, Bay Windows [BW] & PES)



Type (2+1)c1

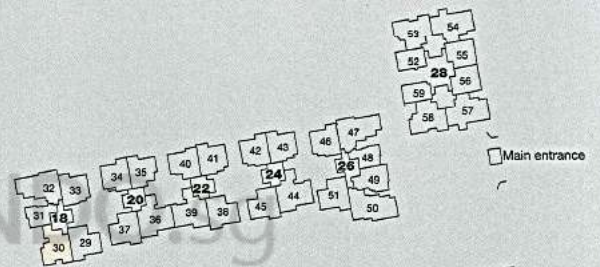
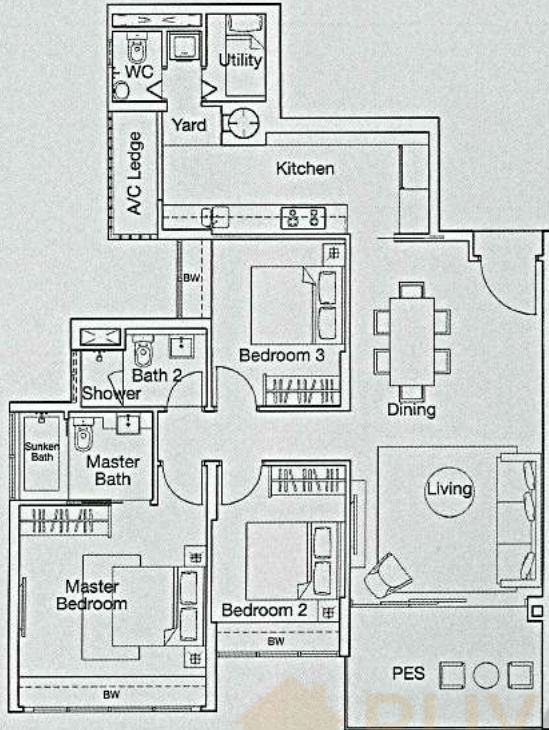
Unit #01-10**, #01-11, #01-37**, #01-38 & #01-45**
 Area 1,087 sqft / 101 sqm
 (inclusive of A/C Ledge, Bay Windows [BW] & PEG)



**Units with mirror image.

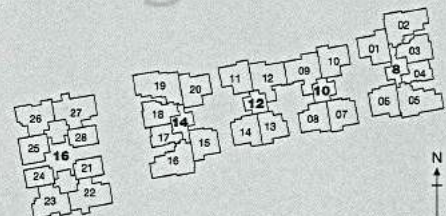
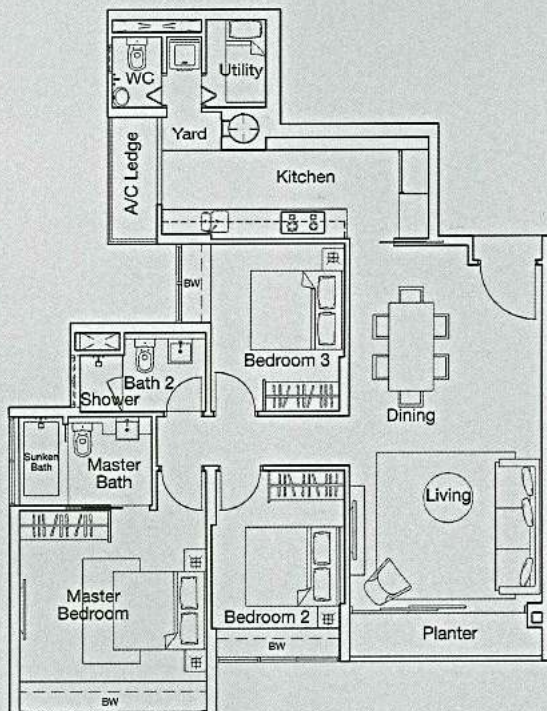
Type (3)a1

Unit #01-30
 Area 1,238 sqft / 115 sqm
 (inclusive of A/C Ledge, Bay Windows [BW] & PES)



Type (3)a

Unit #02-30 to #08-30
 Area 1,173 sqft / 109 sqm
 (inclusive of A/C Ledge, Bay Windows [BW] & Planter)

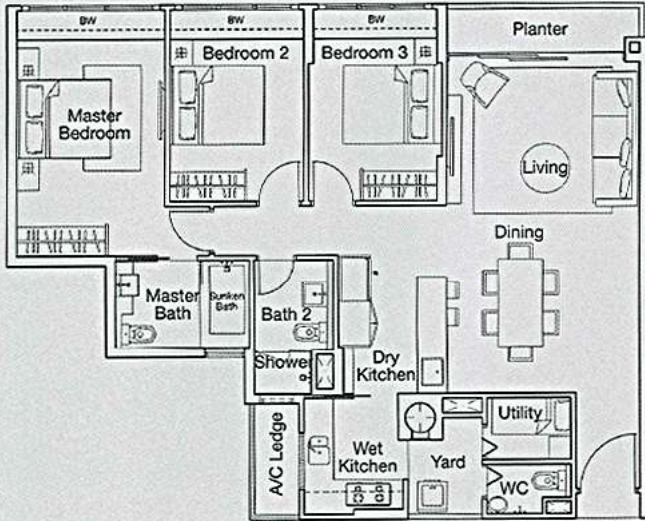


Type (3)b

Unit #02-10 to #08-10**, #02-11 to #08-11, #02-37 to #08-37**,
 #02-38 to #08-38, #02-45 to #08-45**

Area 1,195 sqft / 111 sqm

(inclusive of A/C Ledge, Bay Windows [BW] & Planter)

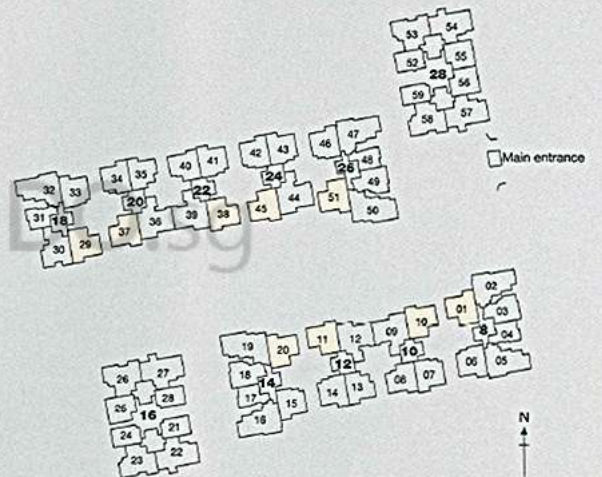
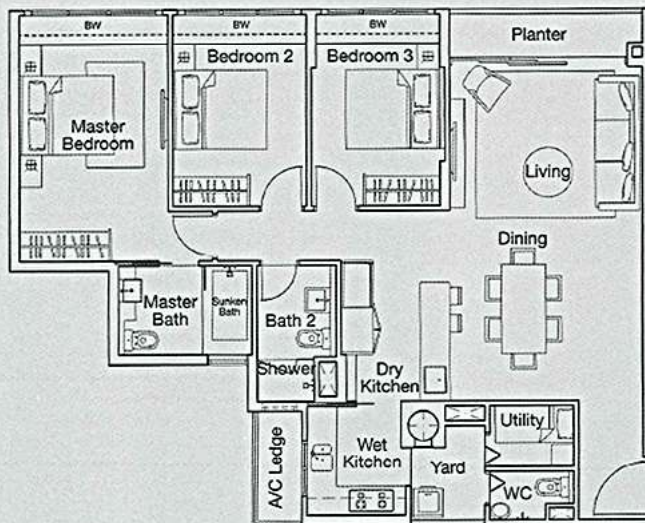


Type (3)b-D

Unit #02-01 to #08-01, #02-20 to #08-20**,
 #02-29 to #08-29, #02-51 to #08-51**

Area 1,195 sqft / 111 sqm

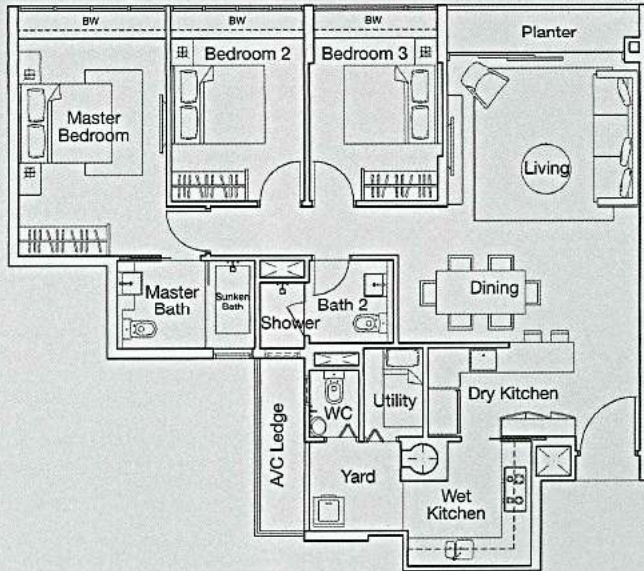
(inclusive of A/C Ledge, Bay Windows [BW] & Planter)



**Units with mirror image.

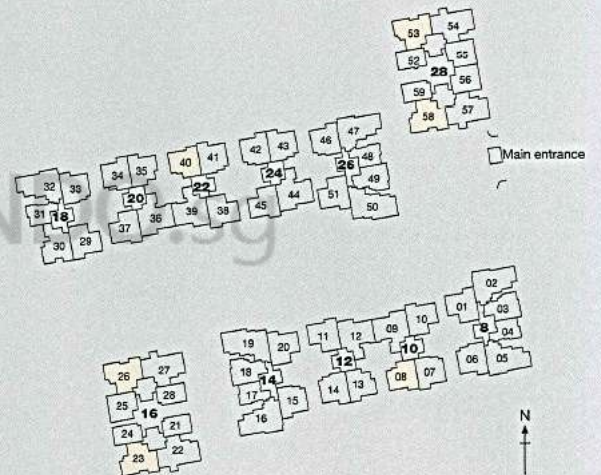
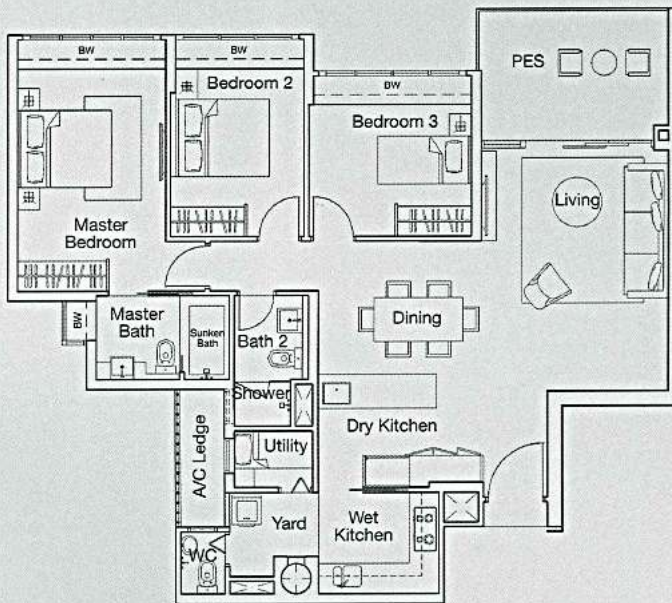
Type (3)c

Unit #02-08 to #08-08** & #02-40 to #08-40
 Area 1,216 sqft / 113 sqm
 (inclusive of A/C Ledge, Bay Windows [BW] & Planter)



Type (3)d1

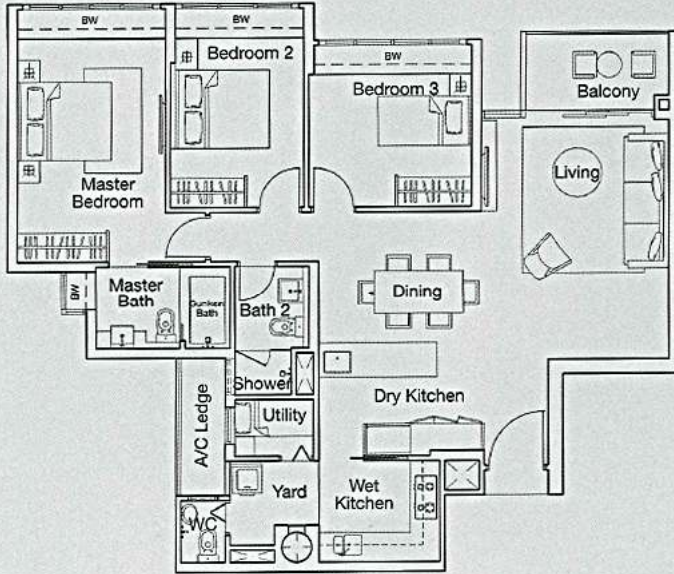
Unit #01-23**, #01-26, #01-53, #01-58**
 Area 1,302 sqft / 121 sqm
 (inclusive of A/C Ledge, Bay Windows [BW] & PES)



**Units with mirror image.

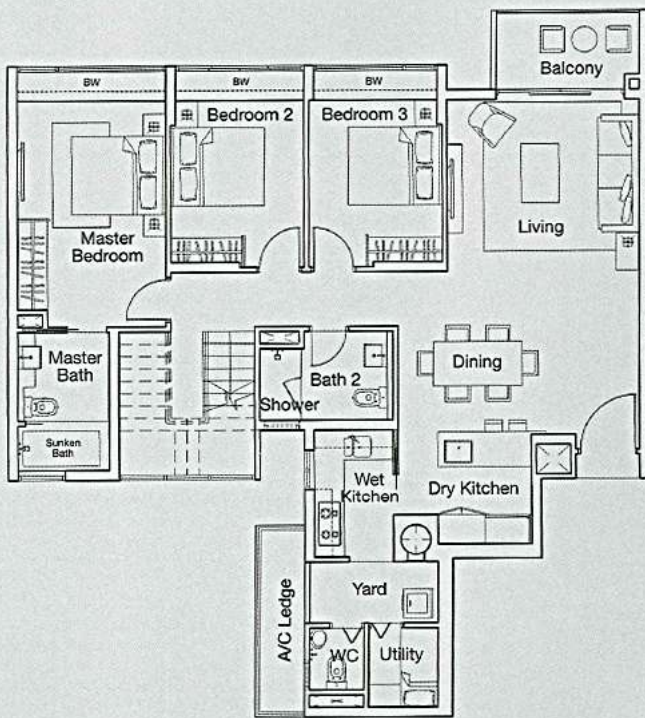
Type (3)d

Unit #02-23 to #08-23**, #02-26 to #08-26,
 #02-53 to #08-53, #02-58 to #08-58**
 Area 1,249 sqft / 116 sqm
 (inclusive of A/C Ledge, Bay Windows [BW] & Balcony)

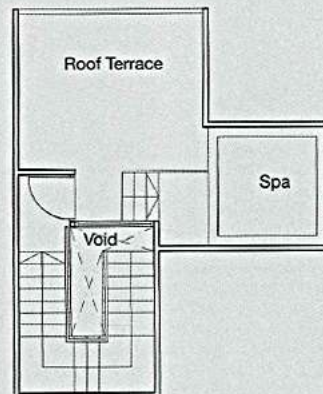
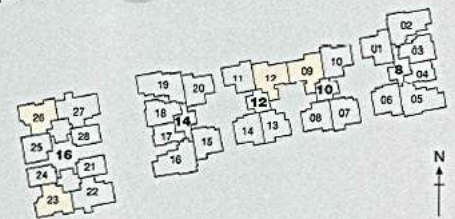
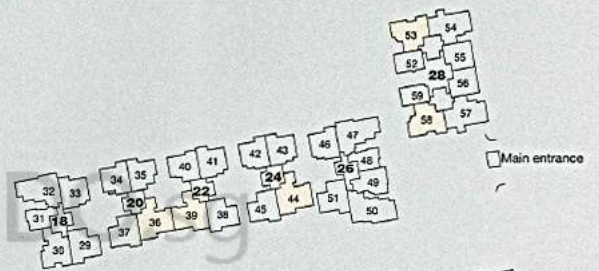


Type (3)e-RT

Unit #08-09**, #08-12***, #08-36**, #08-39*** & #08-44**
 Area 1,722 sqft / 160 sqm
 (inclusive of A/C Ledge, Bay Windows [BW], Balcony, Void & Roof Terrace)



Lower Storey



Upper Storey

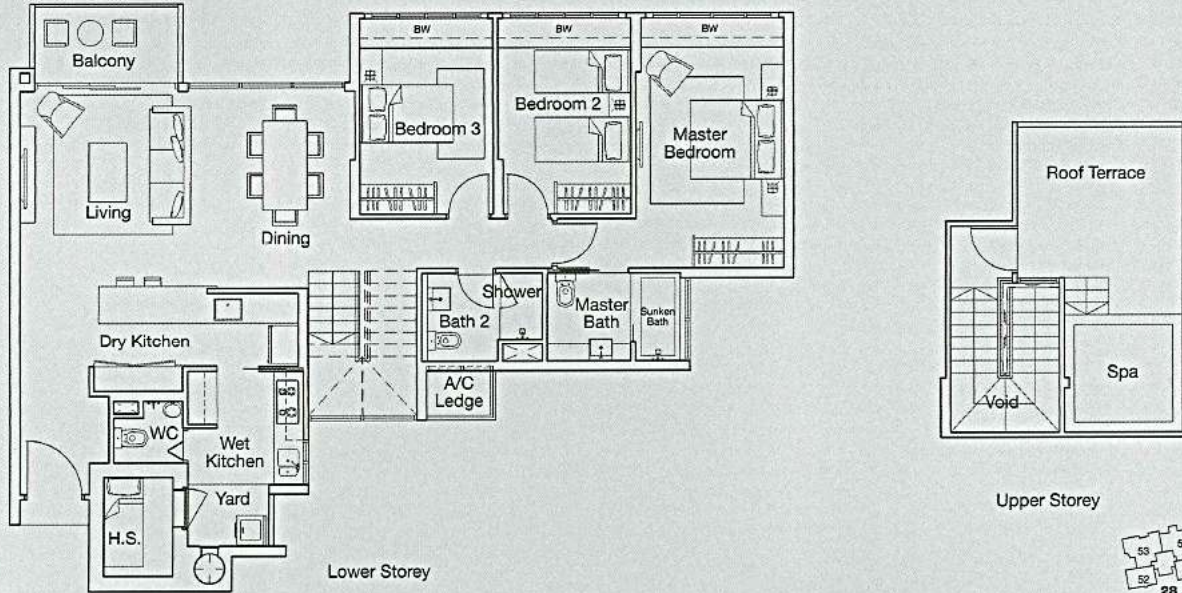
**Units with mirror image.
 *Units with trellis
 †Units with external sliding aluminium screen

Type (3)f-RT

Unit #08-05** & #08-47

Area 1,690 sqft / 157 sqm

(inclusive of A/C Ledge, Bay Windows [BW], Balcony, Void & Roof Terrace)

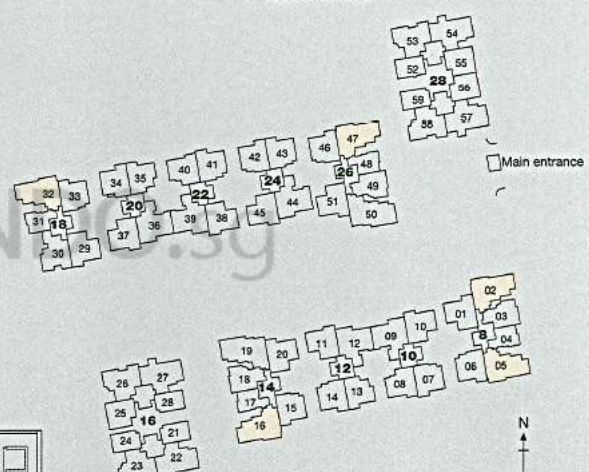
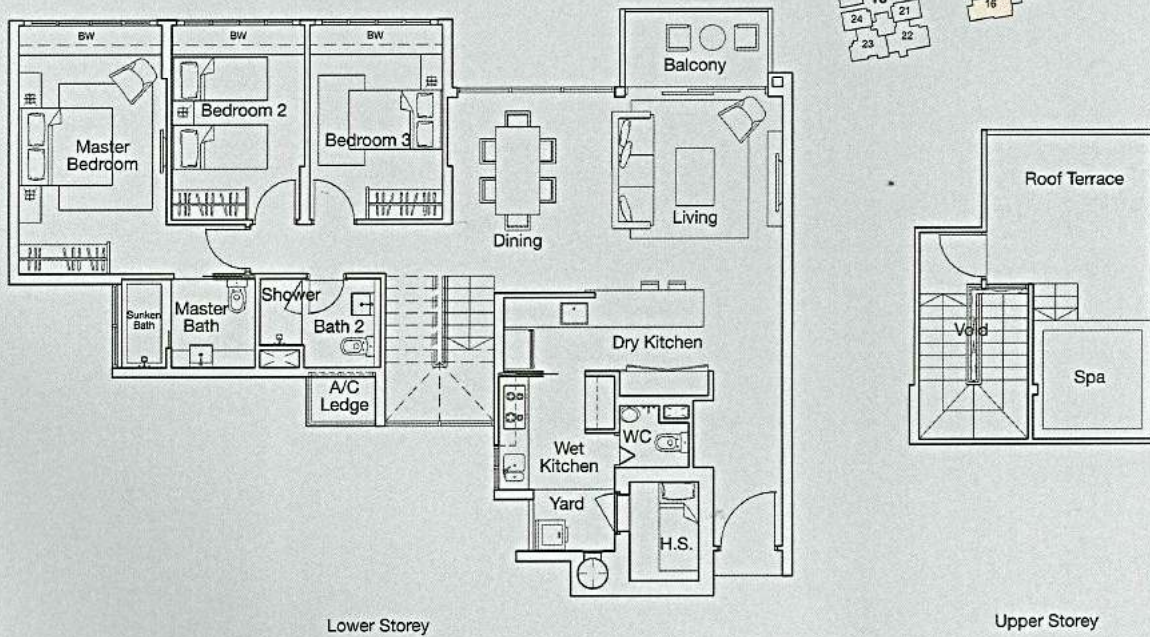


Type (3)f-RT-D

Unit #08-02**, #08-16** & #08-32

Area 1,711 sqft / 159 sqm

(inclusive of A/C Ledge, Bay Windows [BW], Balcony, Void & Roof Terrace)



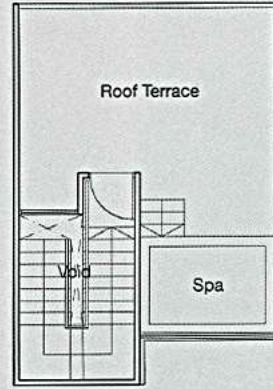
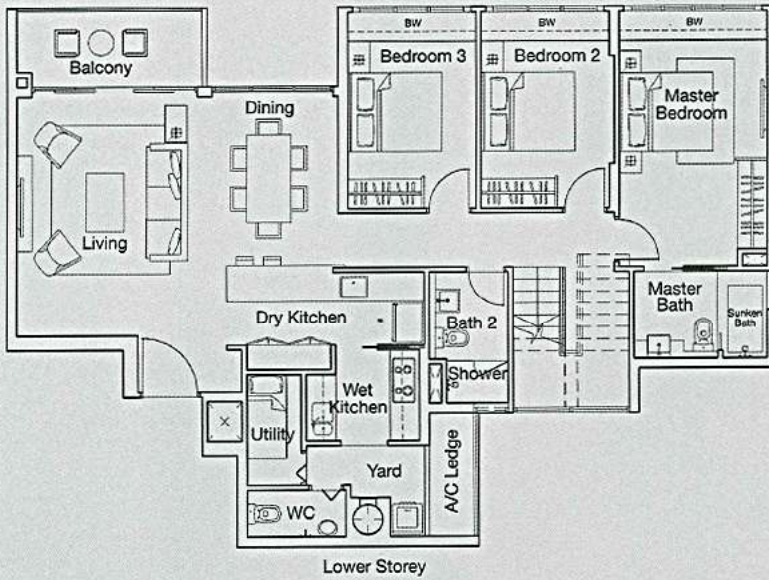
BUYCON.COM.SG

Type (3)g-RT

Unit #08-22****, #08-27**, #08-54** & #08-57****

Area 1,776 sqft / 165 sqm

(inclusive of A/C Ledge, Bay Windows [BW], Balcony, Void & Roof Terrace)



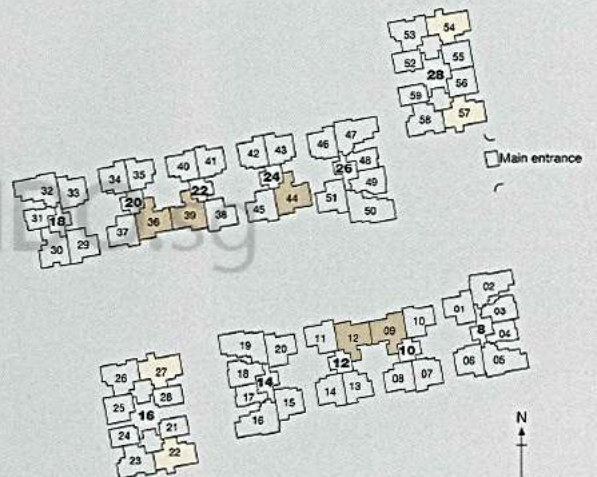
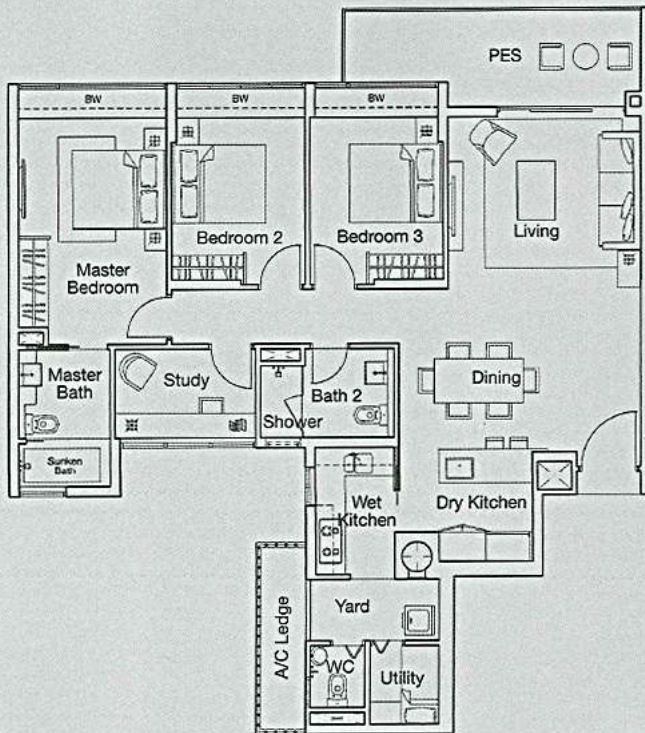
Upper Storey

Type (3+1)a1

Unit #01-09[±], #01-12[±], #01-36[±], #01-39[±] & #01-44[±]

Area 1,389 sqft / 129 sqm

(inclusive of A/C Ledge, Bay Windows [BW] & PES)

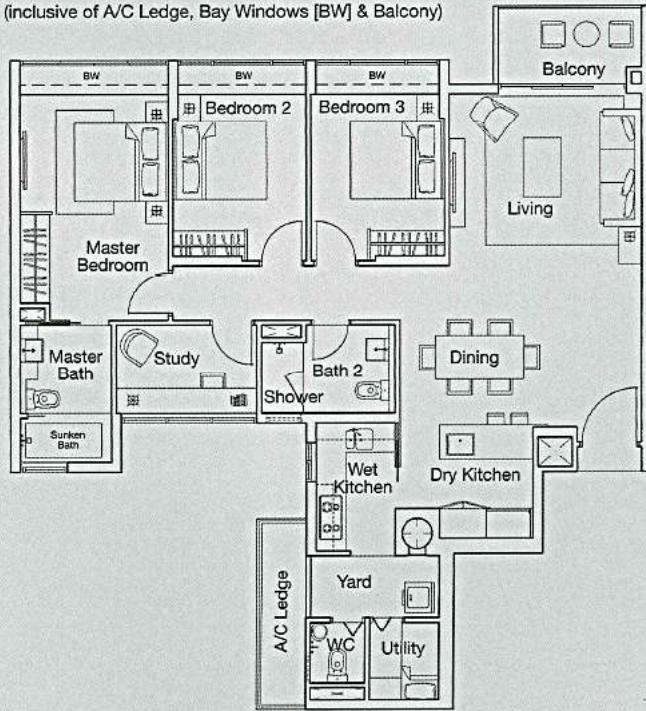


- **Units with mirror image.
- ±±Units with roof feature structure
- ±Units with external sliding aluminium screen

Type (3+1)a

Unit #02-09 to #07-09^x, #02-12 to #07-12^{**x}, #02-36 to #07-36^x,
 #02-39 to #07-39^{**x} & #02-44 to #07-44^x

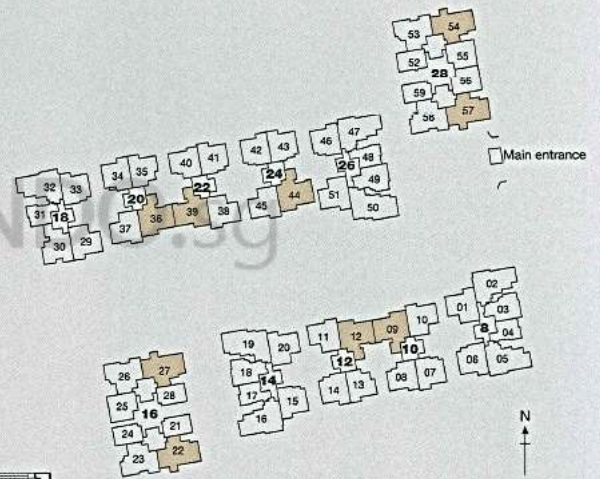
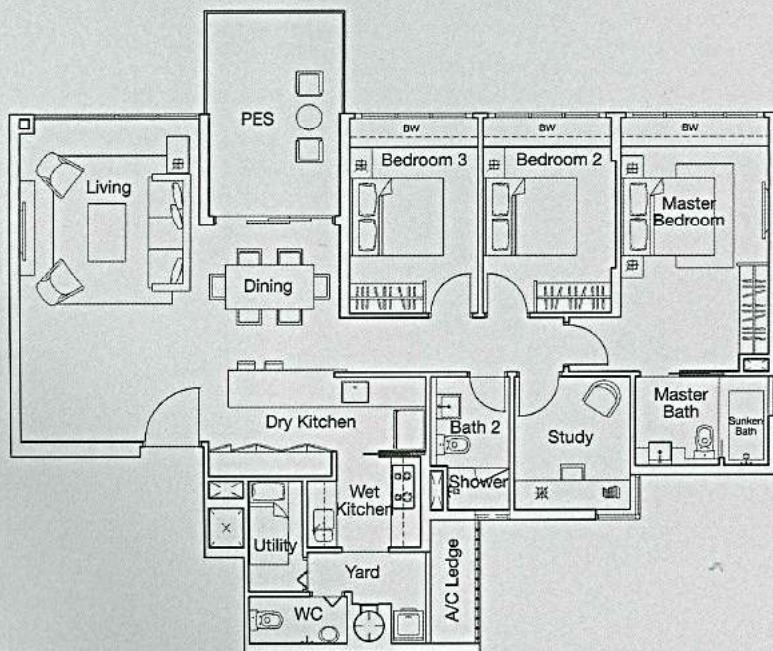
Area 1,324 sqft / 123 sqm
 (inclusive of A/C Ledge, Bay Windows [BW] & Balcony)



Type (3+1)b1

Unit #01-22^{**}, #01-27, #01-54 & #01-57^{**}

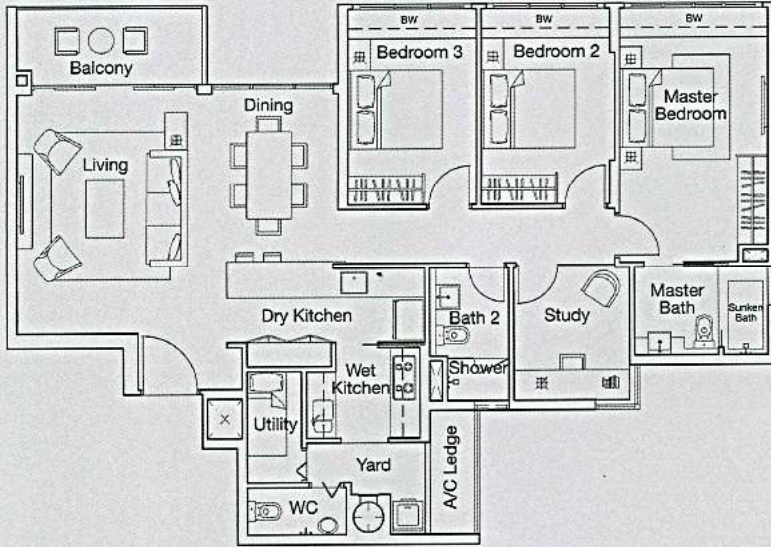
Area 1,453 sqft / 135 sqm
 (inclusive of A/C Ledge, Bay Windows [BW] & PES)



^{**}Units with mirror image.
^xUnits with external sliding aluminium screen

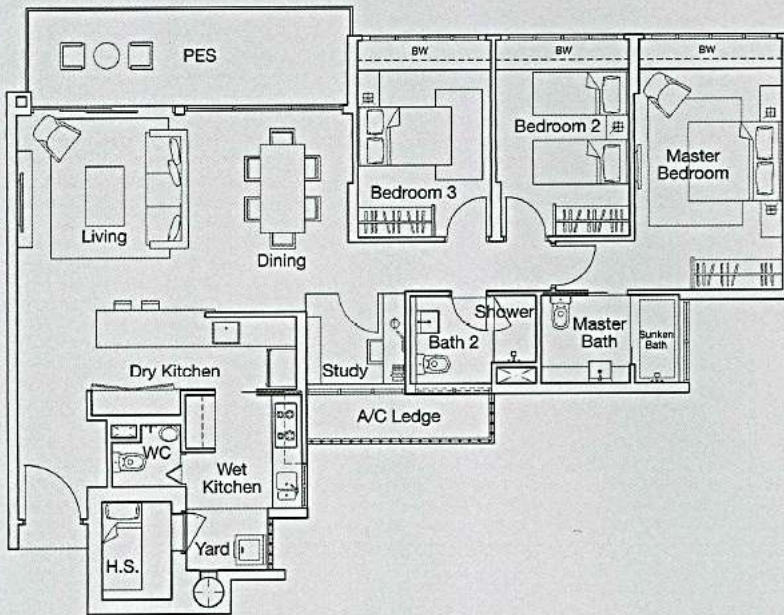
Type (3+1)b

Unit #02-22 to #07-22**, #02-27 to #07-27,
 #02-54 to #07-54 & #02-57 to #07-57**
 Area 1,356 sqft / 126 sqm
 (inclusive of A/C Ledge, Bay Windows [BW] & Balcony)



Type (3+1)c1

Unit #01-05** & #01-47
 Area 1,475 sqft / 137 sqm
 (inclusive of A/C Ledge, Bay Windows [BW] & PES)

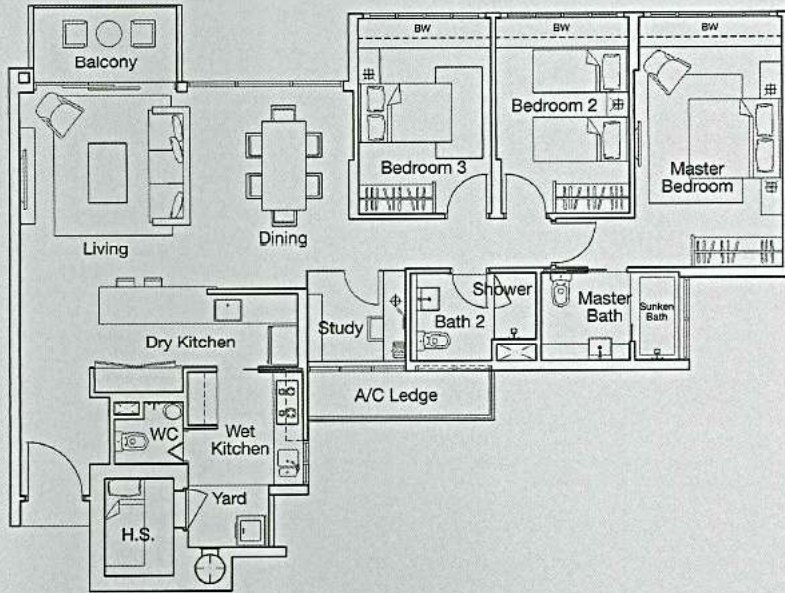


**Units with mirror image.

Type (3+1)c

Unit #02-05 to #07-05** & #02-47 to #07-47
 Area 1,378 sqft / 128 sqm

(inclusive of A/C Ledge, Bay Windows [BW] & Balcony)

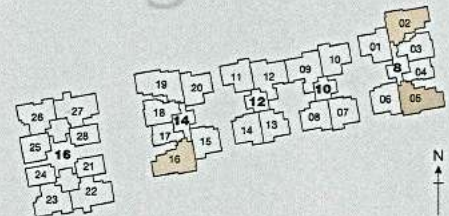
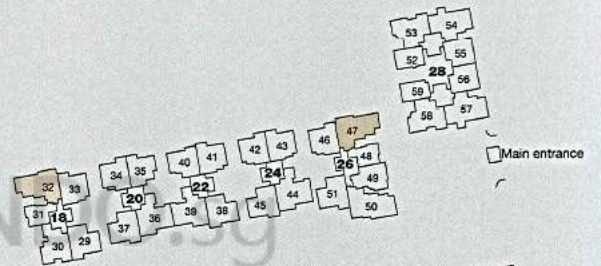
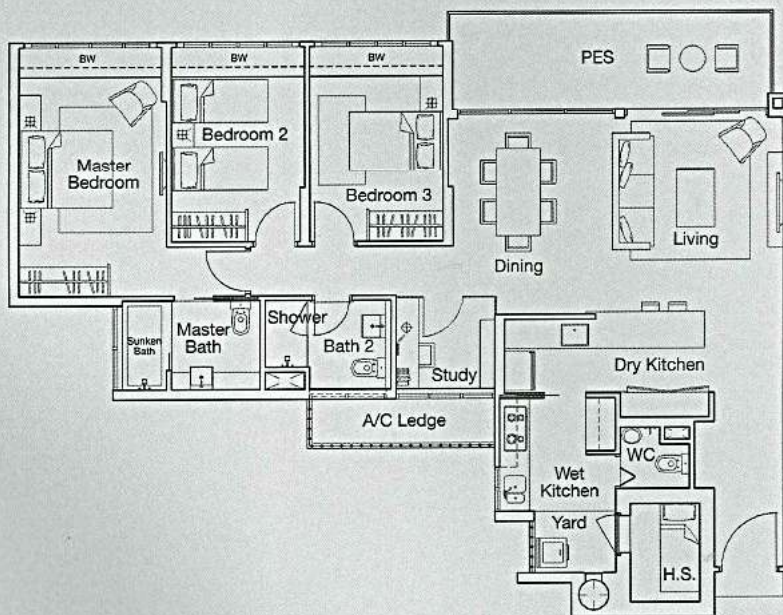


Type (3+1)c1-D

Unit #01-02**, #01-16** & #01-32

Area 1,485 sqft / 138 sqm

(inclusive of A/C Ledge, Bay Windows [BW] & PES)



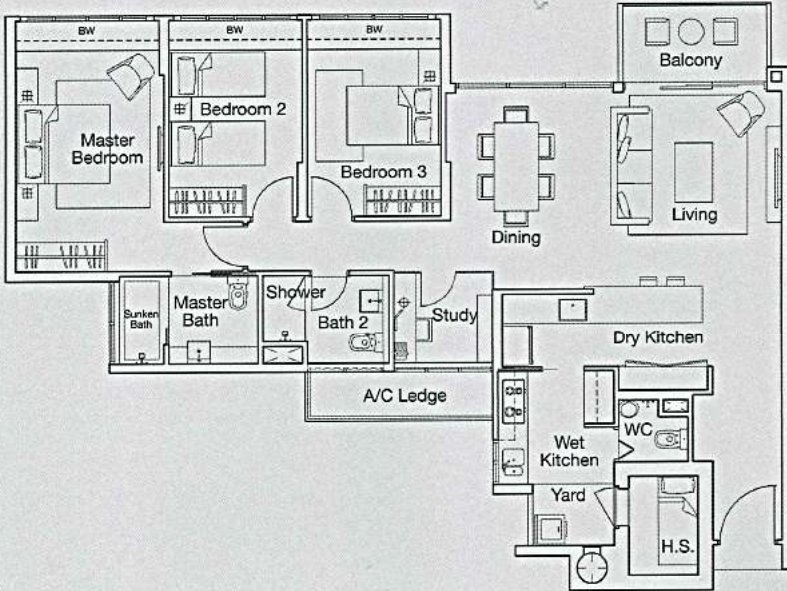
**Units with mirror image.

Type (3+1)c-D

Unit #02-02 to #07-02**, #02-16 to #07-16** & #02-32 to #07-32

Area 1,399 sqft / 130 sqm

(inclusive of A/C Ledge, Bay Windows [BW] & Balcony)

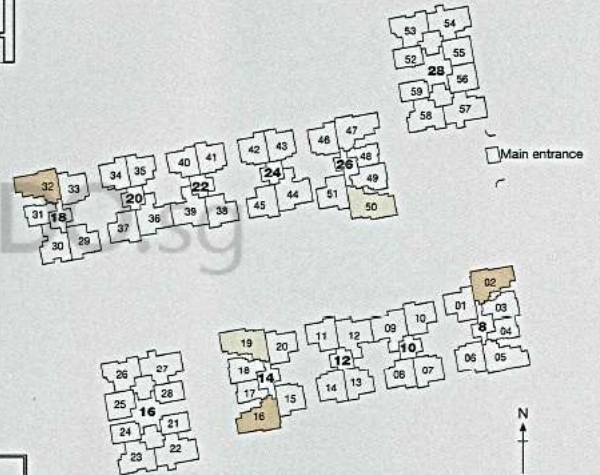
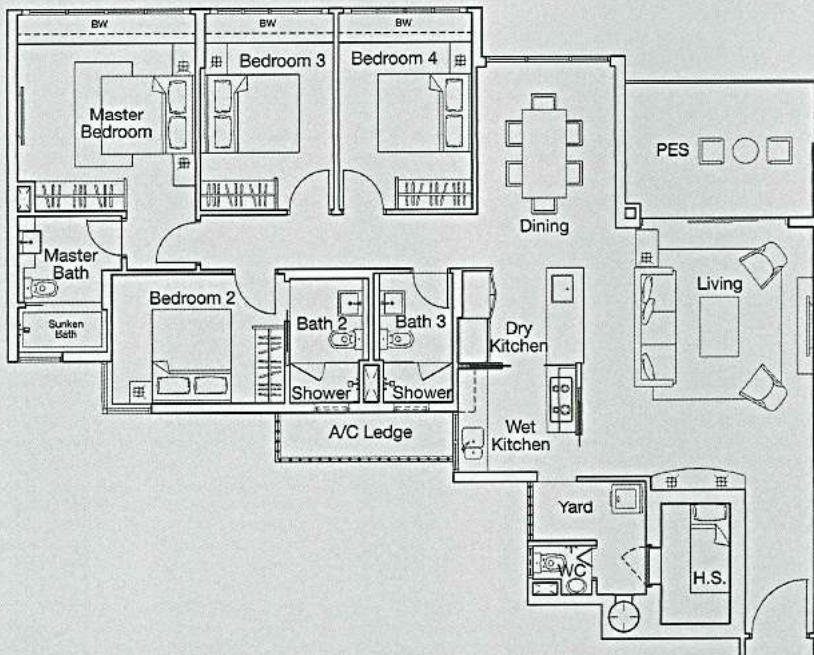


Type (4)a1

Unit #01-19 & #01-50

Area 1,636 sqft / 152 sqm

(inclusive of A/C Ledge, Bay Windows [BW] & PES)



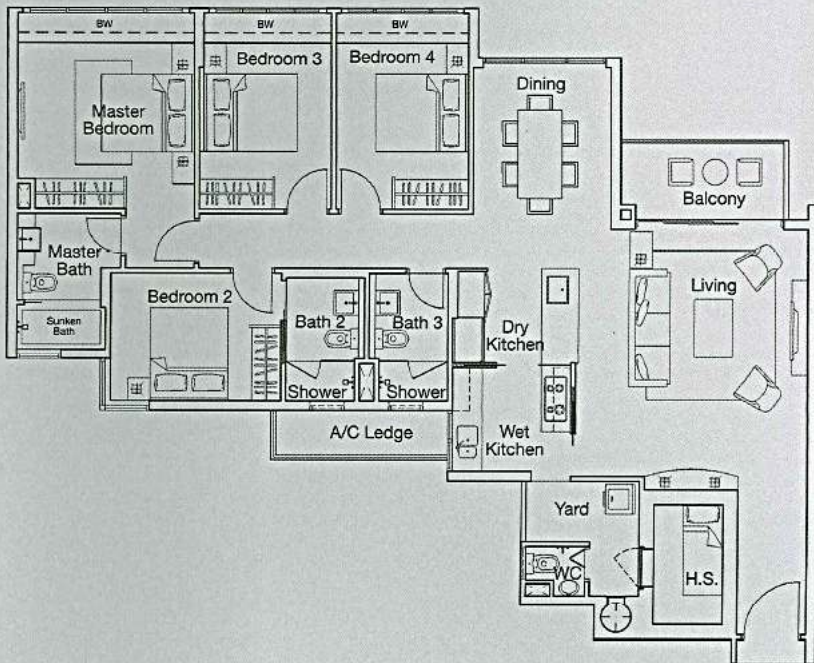
**Units with mirror image.

Type (4)a

Unit #02-19 to #07-19 & #02-50 to #07-50

Area 1,572 sqft / 146 sqm

(inclusive of A/C Ledge, Bay Windows [BW] & Balcony)

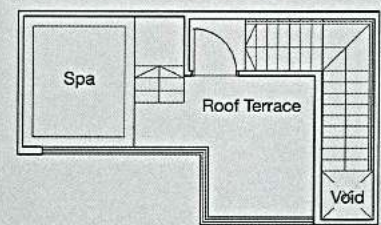
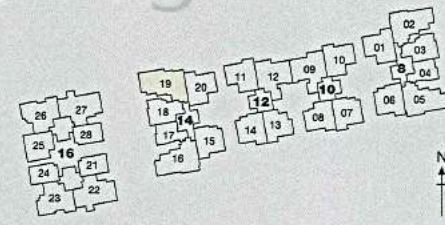
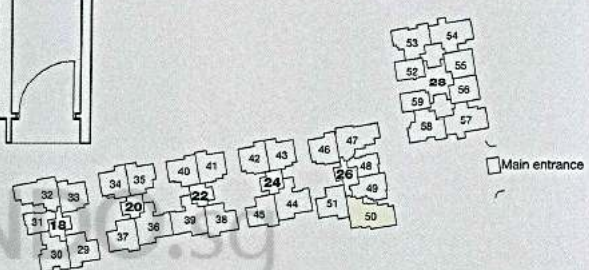
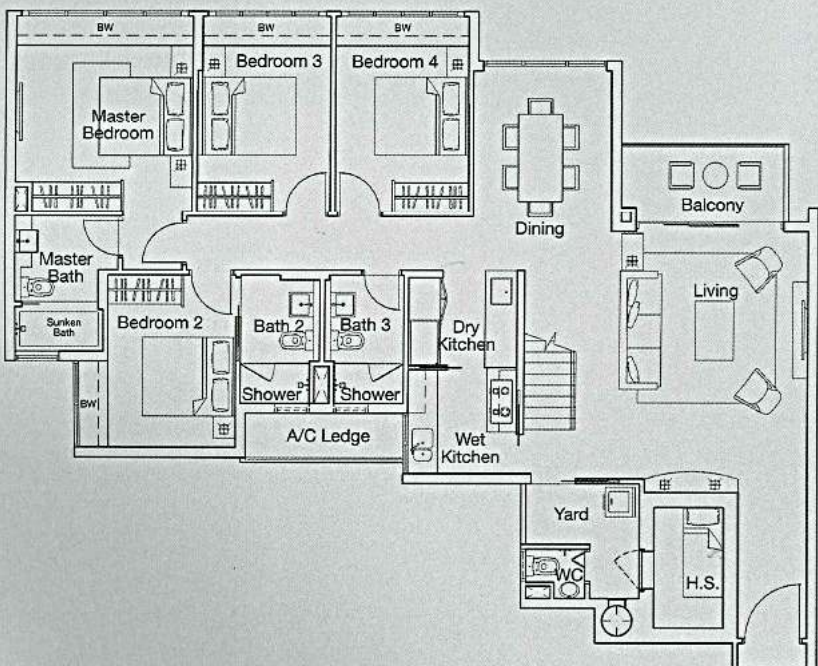


Type (4)a-RT

Unit #08-19 & #08-50

Area 1,894 sqft / 176 sqm

(inclusive of A/C Ledge, Bay Windows [BW], Balcony, Void & Roof Terrace)



Lower Storey

Upper Storey