

1 BEDROOM (LUXURY)

TYPE 1BR 1-PES

42 SQM / 452 SQFT
 (INCLUSIVE OF 4 SQM PES & 2 SQM AC LEDGE)
 BLOCK 6 #01-19 (mirrored)
 BLOCK 8 #01-22
 BLOCK 12 #01-39



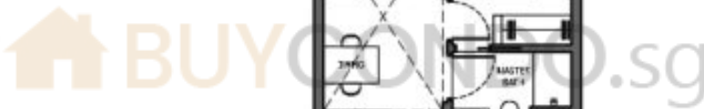
TYPE 1BR 1

42 SQM / 452 SQFT
 (INCLUSIVE OF 4 SQM BALCONY & 2 SQM AC LEDGE)
 BLOCK 6 #02-19 to #17-19 (mirrored)
 BLOCK 8 #02-22 to #17-22
 BLOCK 12 #02-39 to #17-39



TYPE 1BR 1-H

64 SQM / 681 SQFT
 (INCLUSIVE OF 4 SQM BALCONY,
 2 SQM AC LEDGE & 12 SQM STRATA VOID)
 BLOCK 6 #18-19 (mirrored)
 BLOCK 8 #18-22
 BLOCK 12 #18-39



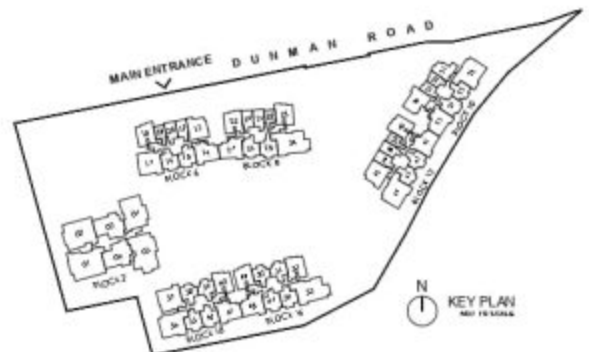
Dotted line denotes strata void complete with bulkhead at unit Type 1BR 1-H

LEGEND:

| | |
|-----------------------|--|
| F FRIDGE | AC AIR-CONDITIONER |
| WD WASHER CUM DRYER | RC REINFORCED CONCRETE (EXCLUDED FROM STRATA AREA) |
| DB DISTRIBUTION BOARD | VS VOID SPACE (EXCLUDED FROM STRATA AREA) |
| ST STORE | |



ALL PLANS ARE SUBJECT TO CHANGES BY THE RELEVANT AUTHORITIES.
 MEASUREMENTS ARE APPROXIMATE ONLY AND SUBJECT TO FINAL SURVEY.
 INFORMATION ACCURATE AT POINT OF PRINTING.
 SP NO: A176-00003-2022-SP03 DATED 15 MAY 2023



1 BEDROOM (LUXURY)

TYPE 1BR 2-PES

42 SQM / 452 SQFT
 (INCLUSIVE OF 5 SQM PES & 2 SQM AC LEDGE)
 BLOCK ID #01-30
 #01-37 (mirrored)



TYPE 1BR 2

42 SQM / 452 SQFT
 (INCLUSIVE OF 5 SQM BALCONY & 2 SQM AC LEDGE)
 BLOCK ID #02-30 to #17-30
 #02-37 to #17-37 (mirrored)



Dotted line denotes strata void complete with bulkhead at unit Type 1BR 2-H

TYPE 1BR 2-H

54 SQM / 581 SQFT
 (INCLUSIVE OF 5 SQM BALCONY,
 2 SQM AC LEDGE & 12 SQM STRATA VOID)
 BLOCK ID #18-30
 #18-37 (mirrored)

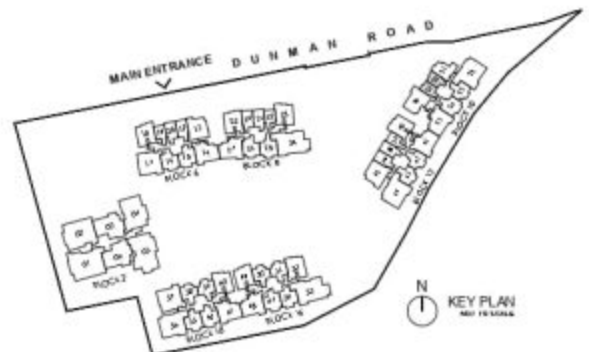


LEGEND:

- | | |
|-----------------------|--|
| F FRIDGE | AC AIR-CONDITIONER |
| WD WASHER CUM DRYER | RC REINFORCED CONCRETE (EXCLUDED FROM STRATA AREA) |
| DB DISTRIBUTION BOARD | VS VOID SPACE (EXCLUDED FROM STRATA AREA) |
| ST STORE | |



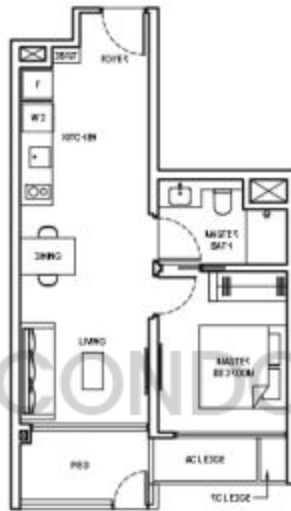
ALL PLANS ARE SUBJECT TO CHANGES BY THE RELEVANT AUTHORITIES.
 MEASUREMENTS ARE APPROXIMATE ONLY AND SUBJECT TO FINAL SURVEY.
 INFORMATION ACCURATE AT POINT OF PRINTING.
 BP NO: A176-00003-2022-BP01 DATED 15 MAY 2023



1 BEDROOM (LUXURY)

TYPE 1BR 3-PES

51 SQM/ 549 SQFT
(INCLUSIVE OF 3 SQM PES & 2 SQM AC LEDGE)
BLOCK 10 #01-33
BLOCK 12 #01-43 (mirrored)

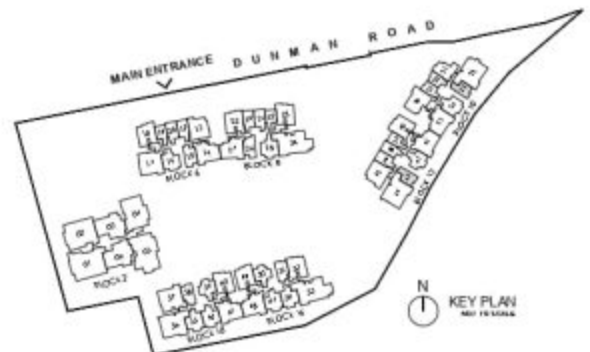


LEGEND:

| | | | |
|----|--------------------|----|---|
| F | FRIDGE | AC | AIR-CONDITIONER |
| WD | WASHER CUM DRYER | RC | REINFORCED CONCRETE (EXCLUDED FROM STRATA AREA) |
| DB | DISTRIBUTION BOARD | VS | VOID SPACE (EXCLUDED FROM STRATA AREA) |
| ST | STORE | | |



ALL PLANS ARE SUBJECT TO CHANGES BY THE RELEVANT AUTHORITIES.
MEASUREMENTS ARE APPROXIMATE ONLY AND SUBJECT TO FINAL SURVEY
INFORMATION ACCURATE AT POINT OF PRINTING.
BP NO: A176-00003-2022-BP01 DATED 15 MAY 2023



1 BEDROOM + STUDY (LUXURY)

TYPE 1BR S1-PES

51 SQM/ 549 SQFT
 (INCLUSIVE OF 5 SQM PES & 2 SQM AC LEDGE)
 BLOCK 8 #01-20
 BLOCK 8 #01-29
 BLOCK 12 #01-46



TYPE 1BR S1

51 SQM/ 549 SQFT
 (INCLUSIVE OF 5 SQM BALCONY & 2 SQM AC LEDGE)
 BLOCK 8 #02-20 to #17-20
 BLOCK 8 #02-29 to #17-29
 BLOCK 12 #02-46 to #17-46



TYPE 1BR S1-H

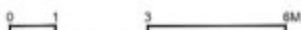
66 SQM/ 710 SQFT
 (INCLUSIVE OF 5 SQM BALCONY,
 2 SQM AC LEDGE & 15 SQM STRATA VOID)
 BLOCK 6 #18-20
 BLOCK 8 #18-29
 BLOCK 12 #18-46

Dotted line denotes strata void complete with bulkhead at unit Type 1BR S1-H

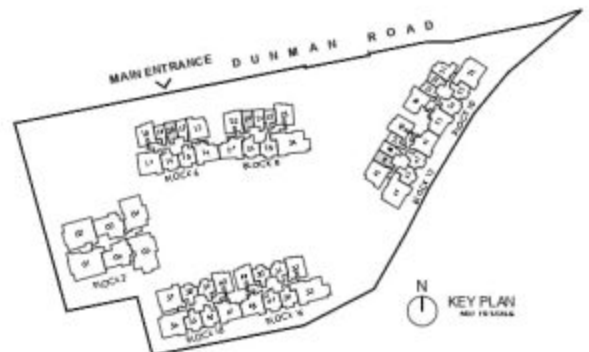


LEGEND:

- | | |
|-----------------------|--|
| F FRIDGE | AC AIR-CONDITIONER |
| WD WASHER CUM DRYER | RC REINFORCED CONCRETE (EXCLUDED FROM STRATA AREA) |
| DB DISTRIBUTION BOARD | VS VOID SPACE (EXCLUDED FROM STRATA AREA) |
| ST STORE | |



ALL PLANS ARE SUBJECT TO CHANGES BY THE RELEVANT AUTHORITIES.
 MEASUREMENTS ARE APPROXIMATE ONLY AND SUBJECT TO FINAL SURVEY.
 INFORMATION ACCURATE AT POINT OF PRINTING.
 SP NO: A176-00003-2022-SP03 DATED 15 MAY 2023



1 BEDROOM + STUDY (LUXURY)

TYPE 1BR S2-PES

51 SQM/ 548 SQFT
 (INCLUSIVE OF 5 SQM PES & 2 SQM AC LEDGE)
 BLOCK 6 #01-12
 BLOCK 8 #01-21
 BLOCK 12 #01-38



TYPE 1BR S2

51 SQM/ 548 SQFT
 (INCLUSIVE OF 5 SQM BALCONY & 2 SQM AC LEDGE)
 BLOCK 6 #02-12 to #17-12
 BLOCK 8 #02-21 to #17-21
 BLOCK 12 #02-38 to #17-38



TYPE 1BR S2-H

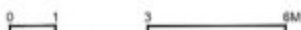
66 SQM/ 710 SQFT
 (INCLUSIVE OF 5 SQM BALCONY,
 2 SQM AC LEDGE & 15 SQM STRATA VOID)
 BLOCK 6 #18-12
 BLOCK 8 #18-21
 BLOCK 12 #18-38



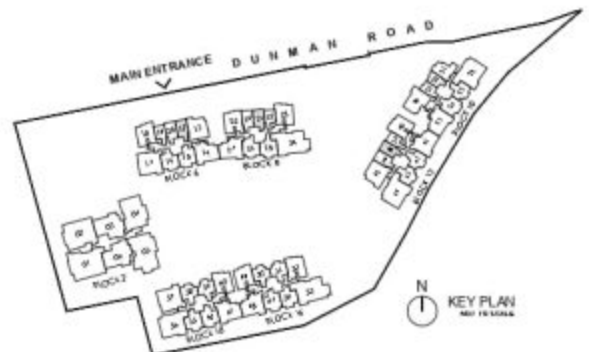
Dotted line denotes strata void complete with bulkhead at unit Type 1BR S2-H

LEGEND:

| | |
|-----------------------|--|
| F FRIDGE | AC AIR-CONDITIONER |
| WD WASHER CUM DRYER | RC REINFORCED CONCRETE (EXCLUDED FROM STRATA AREA) |
| DB DISTRIBUTION BOARD | ☒ VOID SPACE (EXCLUDED FROM STRATA AREA) |
| ST STORE | |



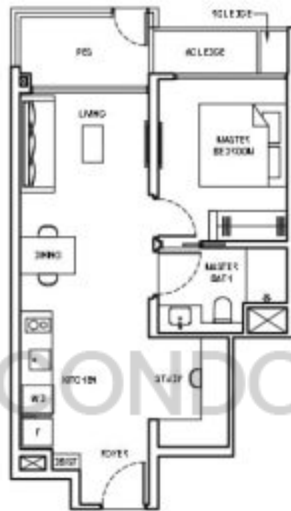
ALL PLANS ARE SUBJECT TO CHANGES BY THE RELEVANT AUTHORITIES.
 MEASUREMENTS ARE APPROXIMATE ONLY AND SUBJECT TO FINAL SURVEY.
 INFORMATION ACCURATE AT POINT OF PRINTING.
 BP NO: A176-00003-2022-BP03 DATED 15 MAY 2023



1 BEDROOM + STUDY (LUXURY)

TYPE 1BR S3-PES

55 SQM / 592 SQFT
(INCLUSIVE OF 3 SQM PES & 2 SQM AC LEDGE)
BLOCK 1B #01-01
BLOCK 1B #01-06 (mirrored)



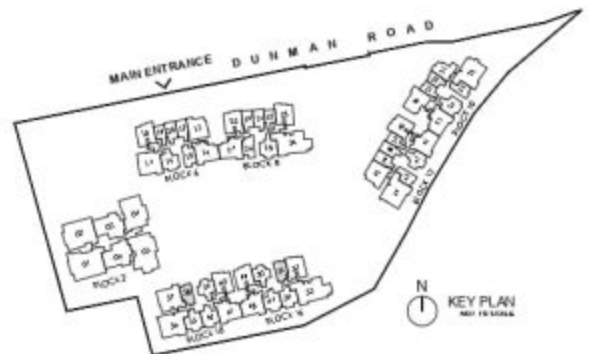
BUYONDO.sg

LEGEND:

| | | | |
|----|--------------------|------|---|
| F | FRIDGE | AC | AIR-CONDITIONER |
| WD | WASHER CUM DRYER | RC | REINFORCED CONCRETE (EXCLUDED FROM STRATA AREA) |
| DB | DISTRIBUTION BOARD | VOID | VOID SPACE (EXCLUDED FROM STRATA AREA) |
| ST | STORE | | |



ALL PLANS ARE SUBJECT TO CHANGES BY THE RELEVANT AUTHORITIES.
MEASUREMENTS ARE APPROXIMATE ONLY AND SUBJECT TO FINAL SURVEY.
INFORMATION ACCURATE AT POINT OF PRINTING.
SP NO: A176-00003-2022-SP03 DATED 15 MAY 2023



1 BEDROOM + STUDY (LUXURY)

TYPE 1BR S5-PES

55 SQM / 592 SQFT
(INCLUSIVE OF 6 SQM PES & 3 SQM AC LEDGE)
BLOCK B #01-26



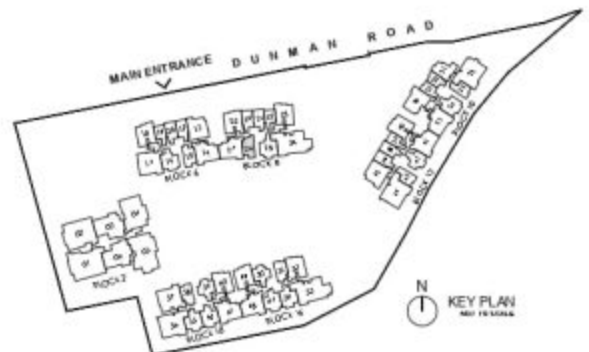
BUY CONDO.SG

LEGEND:

| | | | |
|----|--------------------|----|---|
| F | FRIDGE | AC | AIR-CONDITIONER |
| WD | WASHER CUM DRYER | RC | REINFORCED CONCRETE (EXCLUDED FROM STRATA AREA) |
| DB | DISTRIBUTION BOARD | VS | VOID SPACE (EXCLUDED FROM STRATA AREA) |
| ST | STORE | | |



ALL PLANS ARE SUBJECT TO CHANGES BY THE RELEVANT AUTHORITIES.
MEASUREMENTS ARE APPROXIMATE ONLY AND SUBJECT TO FINAL SURVEY.
INFORMATION ACCURATE AT POINT OF PRINTING.
BP NO: A176-00003-2022-BP01 DATED 15 MAY 2023



2 BEDROOM DUAL KEY (LUXURY)

TYPE 2BR DK1-PES

67 SQM/ 721 SQFT
(INCLUSIVE OF 5 SQM PES & 4 SQM AC LEDGE)
BLOCK ID # 01-31



TYPE 2BR DK1

67 SQM/ 721 SQFT
(INCLUSIVE OF 5 SQM BALCONY & 4 SQM AC LEDGE)
BLOCK ID # 02-31 to #17-31

TYPE 2BR DK1-H

81 SQM/ 872 SQFT
(INCLUSIVE OF 5 SQM BALCONY,
4 SQM AC LEDGE & 14 SQM STRATA VOID)
BLOCK ID # 18-31

Dotted line denotes strata void complete with bulkhead at unit Type 2BR DK1-H

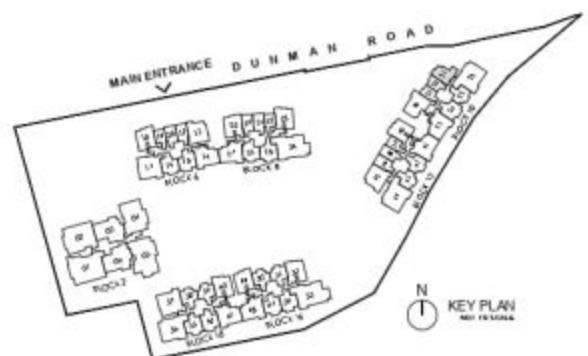


LEGEND:

| | | | |
|----|--------------------|----|---|
| F | FRIDGE | AC | AIR-CONDITIONER |
| WD | WASHER CUM DRYER | RC | REINFORCED CONCRETE (EXCLUDED FROM STRATA AREA) |
| DB | DISTRIBUTION BOARD | ⊠ | VOID SPACE (EXCLUDED FROM STRATA AREA) |
| ST | STORE | | |



ALL PLANS ARE SUBJECT TO CHANGES BY THE RELEVANT AUTHORITIES.
MEASUREMENTS ARE APPROXIMATE ONLY AND SUBJECT TO FINAL SURVEY.
INFORMATION ACCURATE AT POINT OF PRINTING.
BP NO: A176-00003-2022-BP03 DATED 15 MAY 2023



2 BEDROOM DUAL KEY (LUXURY)

TYPE 2BR DK2

72 SQM/ 775 SQFT
(INCLUSIVE OF 5 SQM BALCONY & 4 SQM AC LEDGE)
BLOCK B #02-26 to M17-26

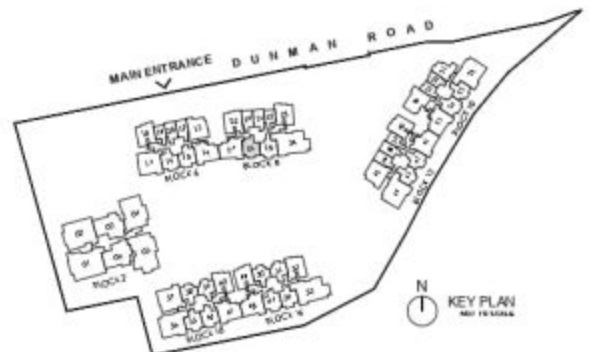


LEGEND:

| | | | |
|----|--------------------|----|---|
| F | FRIDGE | AC | AIR-CONDITIONER |
| WD | WASHER CUM DRYER | RC | REINFORCED CONCRETE (EXCLUDED FROM STRATA AREA) |
| DB | DISTRIBUTION BOARD | VS | VOID SPACE (EXCLUDED FROM STRATA AREA) |
| ST | STORE | | |



ALL PLANS ARE SUBJECT TO CHANGES BY THE RELEVANT AUTHORITIES.
MEASUREMENTS ARE APPROXIMATE ONLY AND SUBJECT TO FINAL SURVEY.
INFORMATION ACCURATE AT POINT OF PRINTING.
BP NO: A176-00003-2022-BP01 DATED 15 MAY 2023



2 BEDROOM (LUXURY)

TYPE 2BR 1-PES

62 SQM/ 667 SQFT
 (INCLUSIVE OF 5 SQM PES & 4 SQM AC LEDGE)
 BLOCK 12 #01-42
 BLOCK 16 #01-50
 BLOCK 18 #01-59 (mirrored)



TYPE 2BR 1

62 SQM/ 667 SQFT
 (INCLUSIVE OF 5 SQM BALCONY & 4 SQM AC LEDGE)
 BLOCK 12 #02-42 to #17-42
 BLOCK 16 #02-50 to #17-50
 BLOCK 18 #02-59 to #17-59 (mirrored)

TYPE 2BR 1-H

83 SQM/ 893 SQFT
 (INCLUSIVE OF 5 SQM BALCONY,
 4 SQM AC LEDGE & 21 SQM STRATA VOID)
 BLOCK 16 #18-50
 BLOCK 18 #18-59 (mirrored)



LEGEND:

| | | | |
|----|--------------------|----|---|
| F | Fridge | AC | AIR-CONDITIONER |
| WD | WASHER CUM DRYER | RC | REINFORCED CONCRETE (EXCLUDED FROM STRATA AREA) |
| DB | DISTRIBUTION BOARD | VS | VOID SPACE (EXCLUDED FROM STRATA AREA) |
| ST | STORE | | |



ALL PLANS ARE SUBJECT TO CHANGES BY THE RELEVANT AUTHORITIES.
 MEASUREMENTS ARE APPROXIMATE ONLY AND SUBJECT TO FINAL SURVEY.
 INFORMATION ACCURATE AT POINT OF PRINTING.
 BP NO: A176-00003-2022-BP03 DATED 15 MAY 2023



2 BEDROOM (LUXURY)

TYPE 2BR 2

62 SQM/ 667 SQFT
 (INCLUSIVE OF 5 SQM BALCONY & 4 SQM AC LEDGE)
 BLOCK 10 #02-33 to #17-33
 BLOCK 12 #02-43 to #17-43 (mirrored)
 BLOCK 16 #02-51 to #17-51 (mirrored)
 BLOCK 18 #02-58 to #17-58

TYPE 2BR 2-H

83 SQM/ 893 SQFT
 (INCLUSIVE OF 5 SQM BALCONY,
 4 SQM AC LEDGE & 21 SQM STRATA VOID)
 BLOCK 16 #18-51 (mirrored)
 BLOCK 18 #18-58

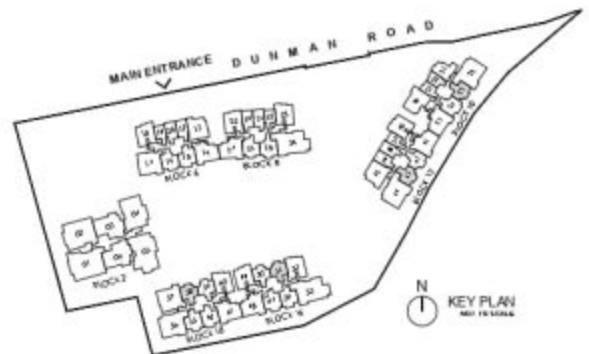


LEGEND:

- | | | | |
|----|--------------------|----|---|
| F | FRIDGE | AC | AIR-CONDITIONER |
| WD | WASHER CUM DRYER | RC | REINFORCED CONCRETE (EXCLUDED FROM STRATA AREA) |
| DB | DISTRIBUTION BOARD | VS | VOID SPACE (EXCLUDED FROM STRATA AREA) |
| ST | STORE | | |



ALL PLANS ARE SUBJECT TO CHANGES BY THE RELEVANT AUTHORITIES.
 MEASUREMENTS ARE APPROXIMATE ONLY AND SUBJECT TO FINAL SURVEY.
 INFORMATION ACCURATE AT POINT OF PRINTING.
 SP NO: A176-00003-2022-SP03 DATED 15 MAY 2023



2 BEDROOM + STUDY (LUXURY)

TYPE 2BR S1-PES

72 SQM/ 775 SQFT
 (INCLUSIVE OF 6 SQM PES & 4 SQM AC LEDGE)
 BLOCK 1B #01-47 (mirrored)
 #01-54
 BLOCK 1B #01-55 (mirrored)
 #01-62



TYPE 2BR S1

72 SQM/ 775 SQFT
 (INCLUSIVE OF 6 SQM BALCONY & 4 SQM AC LEDGE)
 BLOCK 1B #02-47 to #07-47 (mirrored)
 #02-54 to #07-54
 BLOCK 1B #02-55 to #07-55 (mirrored)
 #02-62 to #07-62

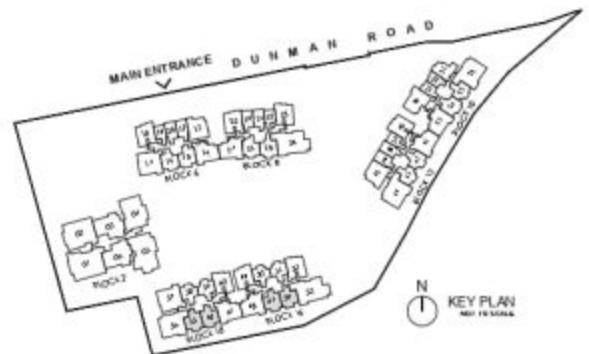


LEGEND:

| | | | |
|----|--------------------|----|---|
| F | FRIDGE | AC | AIR-CONDITIONER |
| WD | WASHER CUM DRYER | RC | REINFORCED CONCRETE (EXCLUDED FROM STRATA AREA) |
| DB | DISTRIBUTION BOARD | VS | VOID SPACE (EXCLUDED FROM STRATA AREA) |
| ST | STORE | | |



ALL PLANS ARE SUBJECT TO CHANGES BY THE RELEVANT AUTHORITIES.
 MEASUREMENTS ARE APPROXIMATE ONLY AND SUBJECT TO FINAL SURVEY.
 INFORMATION ACCURATE AT POINT OF PRINTING.
 BP NO: A176-00003-2022-BP04 DATED 15 MAY 2023



2 BEDROOM + STUDY (LUXURY)

TYPE 2BR S2-PES

72 SQM/ 775 SQFT
 (INCLUSIVE OF 6 SQM PES & 4 SQM AC LEDGE)
 BLOCK 6 # 01-16
 BLOCK 10 # 01-34



TYPE 2BR S2

72 SQM/ 775 SQFT
 (INCLUSIVE OF 6 SQM BALCONY & 4 SQM AC LEDGE)
 BLOCK 6 # 02-36 to #17-36
 BLOCK 10 # 02-34 to #17-34

TYPE 2BR S2-H

93 SQM/ 1001 SQFT
 (INCLUSIVE OF 6 SQM BALCONY,
 4 SQM AC LEDGE & 21 SQM STRATA VOID)
 BLOCK 6 # 18-36



Dotted line denotes strata void complete with bulkhead at unit Type 2BR S2-H

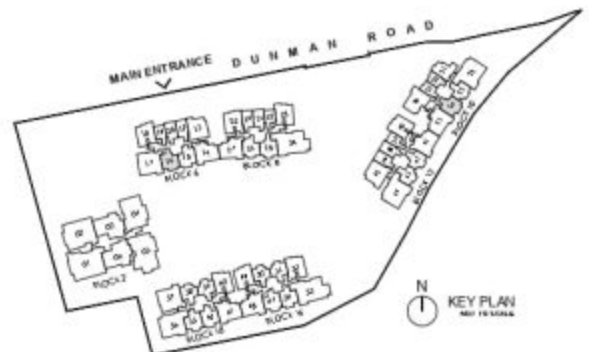


LEGEND:

- | | | | |
|----|--------------------|----|---|
| F | Fridge | AC | AIR-CONDITIONER |
| WD | WASHER CUM DRYER | RC | REINFORCED CONCRETE (EXCLUDED FROM STRATA AREA) |
| DB | DISTRIBUTION BOARD | VS | VOID SPACE (EXCLUDED FROM STRATA AREA) |
| ST | STORE | | |



ALL PLANS ARE SUBJECT TO CHANGES BY THE RELEVANT AUTHORITIES.
 MEASUREMENTS ARE APPROXIMATE ONLY AND SUBJECT TO FINAL SURVEY.
 INFORMATION ACCURATE AT POINT OF PRINTING.
 BP NO: A176-00003-2022-BP03 DATED 15 MAY 2023



N
 KEY PLAN
 NOT TO SCALE

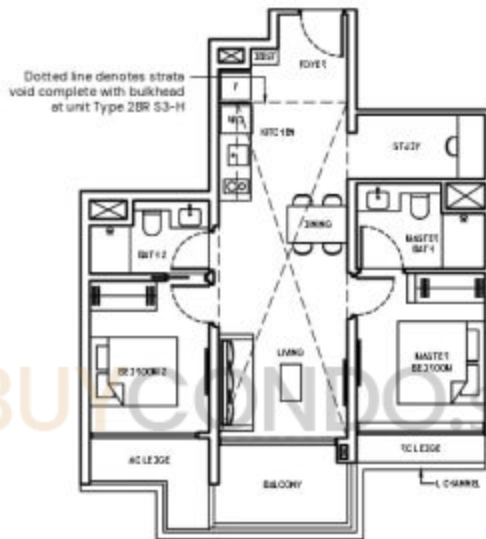
2 BEDROOM + STUDY (LUXURY)

TYPE 2BR S3

72 SQM/ 775 SQFT
(INCLUSIVE OF 6 SQM BALCONY & 4 SQM AC LEDGE)
BLOCK 6 #02-15 to #17-15

TYPE 2BR S3-H

94 SQM/ 1012 SQFT
(INCLUSIVE OF 6 SQM BALCONY,
4 SQM AC LEDGE & 22 SQM STRATA VOID)
BLOCK 6 #18-15

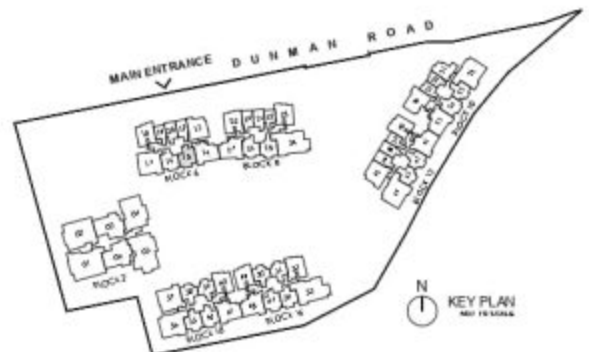


LEGEND:

- | | | | |
|----|--------------------|----|---|
| F | FRIDGE | AC | AIR-CONDITIONER |
| WD | WASHER CUM DRYER | RC | REINFORCED CONCRETE (EXCLUDED FROM STRATA AREA) |
| DB | DISTRIBUTION BOARD | VS | VOID SPACE (EXCLUDED FROM STRATA AREA) |
| ST | STORE | | |



ALL PLANS ARE SUBJECT TO CHANGES BY THE RELEVANT AUTHORITIES.
MEASUREMENTS ARE APPROXIMATE ONLY AND SUBJECT TO FINAL SURVEY
INFORMATION ACCURATE AT POINT OF PRINTING.
BP NO: A176-00003-2022-BP01 DATED 15 MAY 2023



2 BEDROOM + STUDY (LUXURY)

TYPE 2BR S4-PES

74 SQM/ 797 SQFT
(INCLUSIVE OF 6 SQM PES & 4 SQM AC LEDGE)
BLOCK B #01-20



TYPE 2BR S4

74 SQM/ 797 SQFT
(INCLUSIVE OF 6 SQM BALCONY & 4 SQM AC LEDGE)
BLOCK B #02-25 to #17-25

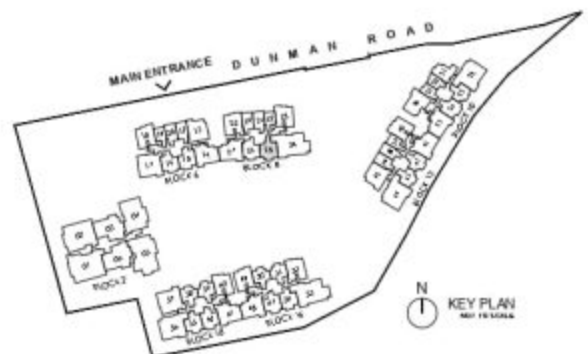


LEGEND:

| | | | |
|----|--------------------|----|---|
| F | FRIDGE | AC | AIR-CONDITIONER |
| WD | WASHER CUM DRYER | RC | REINFORCED CONCRETE (EXCLUDED FROM STRATA AREA) |
| DB | DISTRIBUTION BOARD | VS | VOID SPACE (EXCLUDED FROM STRATA AREA) |
| ST | STORE | | |



ALL PLANS ARE SUBJECT TO CHANGES BY THE RELEVANT AUTHORITIES.
MEASUREMENTS ARE APPROXIMATE ONLY AND SUBJECT TO FINAL SURVEY.
INFORMATION ACCURATE AT POINT OF PRINTING.
BP NO: A176-05003-2022-BP03 DATED 15 MAY 2023



3 BEDROOM DUAL KEY (LUXURY)

TYPE 3BR DK1-PES

97 SQM/ 1044 SQFT
(INCLUSIVE OF 11 SQM PES & 6 SQM AC LEDGE)
BLOCK 6 #01-13

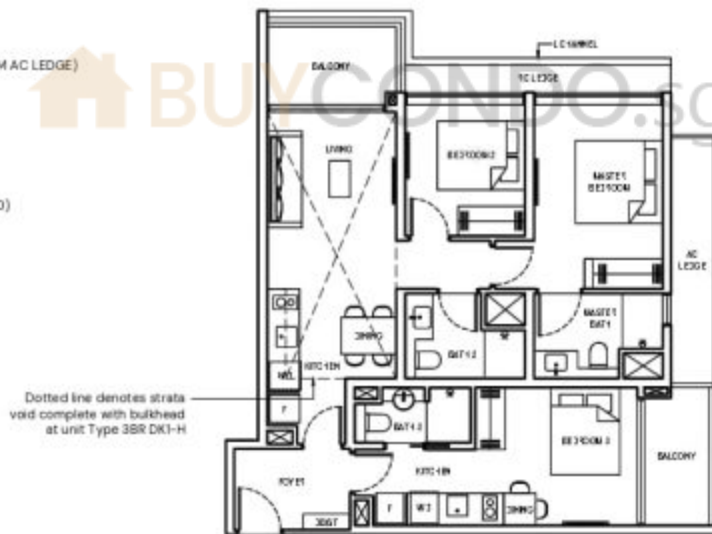


TYPE 3BR DK1

97 SQM/ 1044 SQFT
(INCLUSIVE OF 11 SQM BALCONY & 6 SQM AC LEDGE)
BLOCK 6 #02-13 to #17-13

TYPE 3BR DK1-H

114 SQM/ 1227 SQFT
(INCLUSIVE OF 11 SQM BALCONY,
6 SQM AC LEDGE & 17 SQM STRATA VOID)
BLOCK 6 #18-13

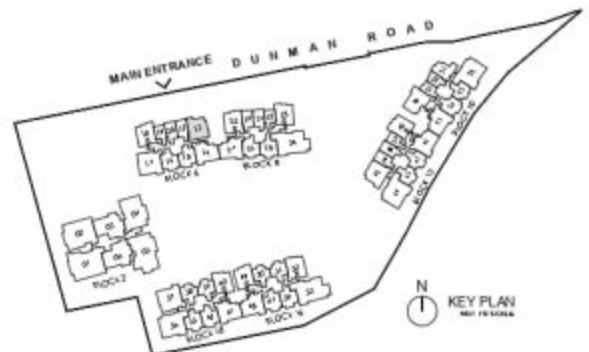


LEGEND:

- | | | | |
|----|--------------------|----|---|
| F | FRIDGE | AC | AIR-CONDITIONER |
| WD | WASHER CUM DRYER | RC | REINFORCED CONCRETE (EXCLUDED FROM STRATA AREA) |
| DB | DISTRIBUTION BOARD | VS | VOID SPACE (EXCLUDED FROM STRATA AREA) |
| ST | STORE | | |



ALL PLANS ARE SUBJECT TO CHANGES BY THE RELEVANT AUTHORITIES.
MEASUREMENTS ARE APPROXIMATE ONLY AND SUBJECT TO FINAL SURVEY.
INFORMATION ACCURATE AT POINT OF PRINTING.
BP NO: A176-05003-2022-BP03 DATED 15 MAY 2023



3 BEDROOM DUAL KEY (LUXURY)

TYPE 3BR DK2-PES

98 SQM/ 1055 SQFT
(INCLUSIVE OF 11 SQM PES & 6 SQM AC LEDGE)
BLOCK 12 # 06-45



TYPE 3BR DK2

98 SQM/ 1055 SQFT
(INCLUSIVE OF 11 SQM BALCONY & 6 SQM AC LEDGE)
BLOCK 12 # 02-45 to #17-45



TYPE 3BR DK2-H

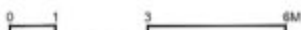
115 SQM/ 1238 SQFT
(INCLUSIVE OF 11 SQM BALCONY,
6 SQM AC LEDGE & 7 SQM STRATA VOID)
BLOCK 12 # 18-45



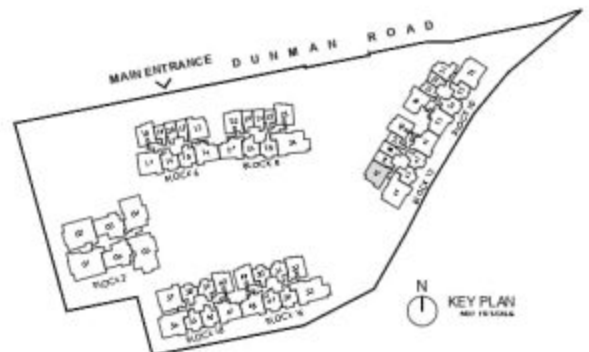
Dotted line denotes strata void complete with bulkhead at unit Type 3BR DK2-H

LEGEND:

| | | | |
|----|--------------------|----|---|
| F | FRIDGE | AC | AIR-CONDITIONER |
| WD | WASHER CUM DRYER | RC | REINFORCED CONCRETE (EXCLUDED FROM STRATA AREA) |
| DB | DISTRIBUTION BOARD | VS | VOID SPACE (EXCLUDED FROM STRATA AREA) |
| ST | STORE | | |



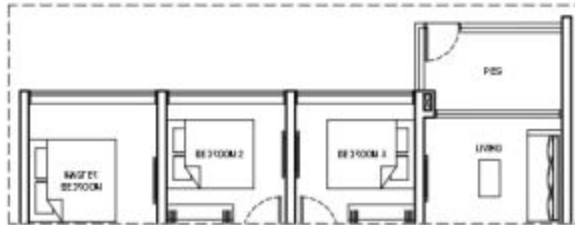
ALL PLANS ARE SUBJECT TO CHANGES BY THE RELEVANT AUTHORITIES.
MEASUREMENTS ARE APPROXIMATE ONLY AND SUBJECT TO FINAL SURVEY.
INFORMATION ACCURATE AT POINT OF PRINTING.
BP NO. A176-05003-2022-BP03 DATED 15 MAY 2023



3 BEDROOM FLEX (LUXURY)

TYPE 3BR FLEX-PES

102 SQM/ 1098 SQFT
(INCLUSIVE OF 6 SQM PES & 6 SQM AC LEDGE)
BLOCK ID # 01-36



TYPE 3BR FLEX

102 SQM/ 1098 SQFT
(INCLUSIVE OF 6 SQM BALCONY & 6 SQM AC LEDGE)
BLOCK ID # 02-36 to #17-36



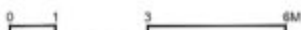
Dotted line denotes strata void complete with bulkhead at unit Type 3BR FLEX-H

TYPE 3BR FLEX-H

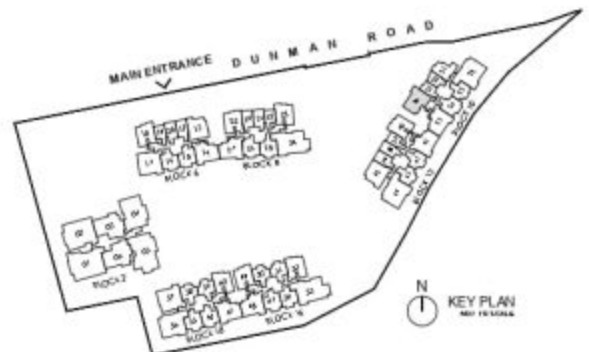
121 SQM/ 1302 SQFT
(INCLUSIVE OF 6 SQM BALCONY,
6 SQM AC LEDGE & 19 SQM STRATA VOID)
BLOCK ID # 18-36

LEGEND:

- | | | | |
|-----|--------------------|----|---|
| F | FRIDGE | AC | AIR-CONDITIONER |
| W/D | WASHER AND DRYER | RC | REINFORCED CONCRETE (EXCLUDED FROM STRATA AREA) |
| DB | DISTRIBUTION BOARD | ⊠ | VOID SPACE (EXCLUDED FROM STRATA AREA) |
| ST | STORE | | |
| WC | WATER CLOSET | | |



ALL PLANS ARE SUBJECT TO CHANGES BY THE RELEVANT AUTHORITIES.
MEASUREMENTS ARE APPROXIMATE ONLY AND SUBJECT TO FINAL SURVEY.
INFORMATION ACCURATE AT POINT OF PRINTING.
BP NO. A176-05003-2022-BP03 DATED 15 MAY 2023



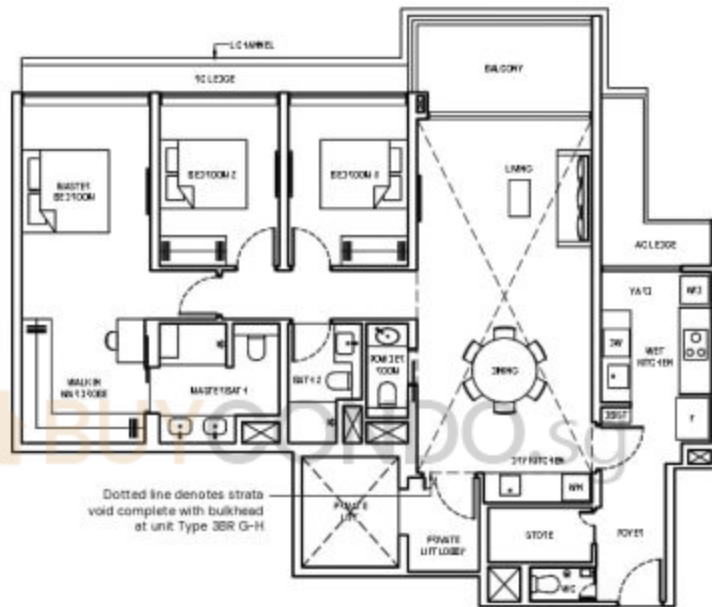
3 BEDROOM (GRAND)

TYPE 3BR G

137 SQM/ 1475 SQFT
 (INCLUSIVE OF 9 SQM BALCONY, 6 SQM AC LEDGE
 & 3 SQM PRIVATE LIFT LOBBY)
 BLOCK 2 #03-03 to #17-03
 #03-06 to #17-06 (mirrored)

TYPE 3BR G-H

169 SQM/ 1819 SQFT
 (INCLUSIVE OF 9 SQM BALCONY, 6 SQM AC LEDGE,
 3 SQM PRIVATE LIFT LOBBY & 32 SQM STRATA VOID)
 BLOCK 2 #18-03
 #18-06 (mirrored)



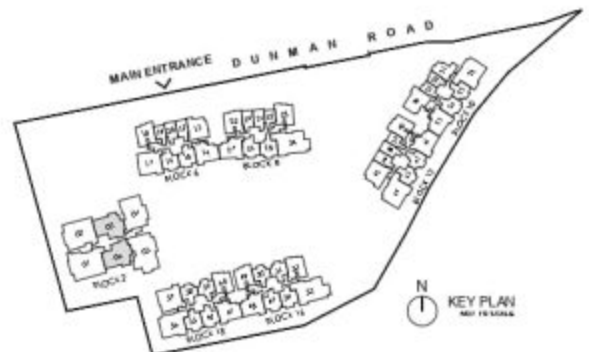
Dotted line denotes strata void complete with bulkhead at unit Type 3BR G-H

LEGEND:

- | | | | |
|-----|--------------------|----|---|
| F | FRIDGE | WN | WINE CHILLER |
| W/D | WASHER AND DRYER | DW | DISHWASHER |
| DB | DISTRIBUTION BOARD | AC | AIR-CONDITIONER |
| ST | STORE | RC | REINFORCED CONCRETE (EXCLUDED FROM STRATA AREA) |
| WC | WATER CLOSET | ⊠ | VOID SPACE (EXCLUDED FROM STRATA AREA) |



ALL PLANS ARE SUBJECT TO CHANGES BY THE RELEVANT AUTHORITIES.
 MEASUREMENTS ARE APPROXIMATE ONLY AND SUBJECT TO FINAL SURVEY.
 INFORMATION ACCURATE AT POINT OF PRINTING.
 BP NO: A176-00003-2022-BP04 DATED 15 MAY 2023



N
 KEY PLAN
 NOT TO SCALE

3 BEDROOM (LUXURY)

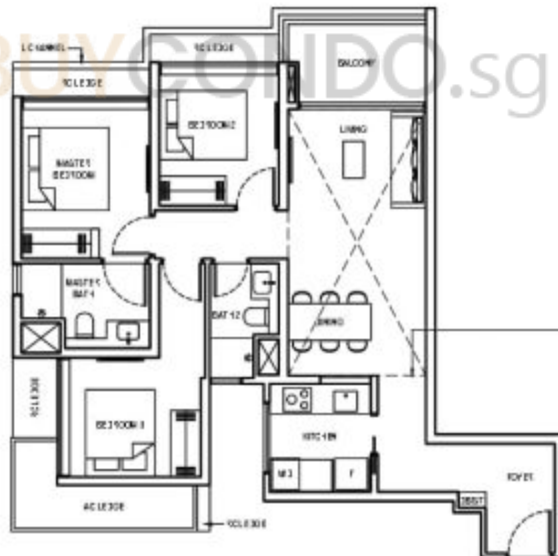
TYPE 3BR 1-PES

91 SQM/ 980 SQFT
 (INCLUSIVE OF 6 SQM PES & 5 SQM AC LEDGE)
 BLOCK 6 #01-18
 BLOCK 8 #01-23 (mirrored)
 BLOCK 12 #01-40 (mirrored)
 BLOCK 16 #01-49
 BLOCK 18 #01-60 (mirrored)



TYPE 3BR 1

89 SQM/ 958 SQFT
 (INCLUSIVE OF 6 SQM BALCONY & 5 SQM AC LEDGE)
 BLOCK 6 #02-18 to #17-18
 BLOCK 8 #02-23 to #17-23 (mirrored)
 BLOCK 12 #02-40 to #17-40 (mirrored)
 BLOCK 16 #02-49 to #17-49
 BLOCK 18 #02-60 to #17-60 (mirrored)



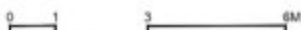
Dotted line denotes strata void complete with bulkhead at unit Type 3BR 1-H

TYPE 3BR 1-H

108 SQM/ 1163 SQFT
 (INCLUSIVE OF 6 SQM BALCONY,
 5 SQM AC LEDGE & 19 SQM STRATA VOID)
 BLOCK 6 #18-18
 BLOCK 8 #18-23 (mirrored)
 BLOCK 12 #18-40 (mirrored)
 BLOCK 16 #18-49
 BLOCK 18 #18-60 (mirrored)

LEGEND:

| | |
|-----------------------|--|
| F FRIDGE | AC AIR-CONDITIONER |
| WD WASHER CUM DRYER | RC REINFORCED CONCRETE (EXCLUDED FROM STRATA AREA) |
| DB DISTRIBUTION BOARD | VS VOID SPACE (EXCLUDED FROM STRATA AREA) |
| ST STORE | |



ALL PLANS ARE SUBJECT TO CHANGES BY THE RELEVANT AUTHORITIES.
 MEASUREMENTS ARE APPROXIMATE ONLY AND SUBJECT TO FINAL SURVEY.
 INFORMATION ACCURATE AT POINT OF PRINTING.
 SP NO: A176-00003-2022-SP03 DATED 15 MAY 2023



3 BEDROOM (LUXURY)

TYPE 3BR 2-PES

87 SQM/ 936 SQFT
(INCLUSIVE OF 6 SQM PES & 5 SQM AC LEDGE)
BLOCK 16 #01-02



TYPE 3BR 2

87 SQM/ 936 SQFT
(INCLUSIVE OF 6 SQM BALCONY & 5 SQM AC LEDGE)
BLOCK 16 #02-02 to #07-02

TYPE 3BR 2-H

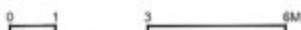
106 SQM/ 1141 SQFT
(INCLUSIVE OF 6 SQM BALCONY,
5 SQM AC LEDGE & 19 SQM STRATA VOID)
BLOCK 16 #18-02

Dotted line denotes strata
void complete with bulkhead
at unit Type 3BR 2-H



LEGEND:

| | | | |
|----|--------------------|----|---|
| F | FRIDGE | AC | AIR-CONDITIONER |
| WD | WASHER CUM DRYER | RC | REINFORCED CONCRETE (EXCLUDED FROM STRATA AREA) |
| DB | DISTRIBUTION BOARD | VS | VOID SPACE (EXCLUDED FROM STRATA AREA) |
| ST | STORE | | |



ALL PLANS ARE SUBJECT TO CHANGES BY THE RELEVANT AUTHORITIES.
MEASUREMENTS ARE APPROXIMATE ONLY AND SUBJECT TO FINAL SURVEY.
INFORMATION ACCURATE AT POINT OF PRINTING.
BP NO. A176-00003-2022-BP03 DATED 15 MAY 2023



3 BEDROOM (LUXURY)

TYPE 3BR 3-PES

86 SQM/ 926 SQFT
(INCLUSIVE OF 6 SQM PES & 5 SQM AC LEDGE)
BLOCK B #01-28



TYPE 3BR 3

86 SQM/ 926 SQFT
(INCLUSIVE OF 6 SQM BALCONY & 5 SQM AC LEDGE)
BLOCK B #02-28 to #07-28



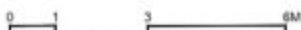
Dotted line denotes strata void complete with bulkhead at unit Type 3BR 3-H

TYPE 3BR 3-H

105 SQM/ 1130 SQFT
(INCLUSIVE OF 6 SQM BALCONY,
5 SQM AC LEDGE & 19 SQM STRATA VOID)
BLOCK B #18-28

LEGEND:

- | | | | |
|----|--------------------|----|---|
| F | FRIDGE | AC | AIR-CONDITIONER |
| WD | WASHER CUM DRYER | RC | REINFORCED CONCRETE (EXCLUDED FROM STRATA AREA) |
| DB | DISTRIBUTION BOARD | VS | VOID SPACE (EXCLUDED FROM STRATA AREA) |
| ST | STORE | | |



ALL PLANS ARE SUBJECT TO CHANGES BY THE RELEVANT AUTHORITIES.
MEASUREMENTS ARE APPROXIMATE ONLY AND SUBJECT TO FINAL SURVEY.
INFORMATION ACCURATE AT POINT OF PRINTING.
BP NO. A176-05003-2022-BP03 DATED 15 MAY 2023



3 BEDROOM + STUDY (LUXURY)

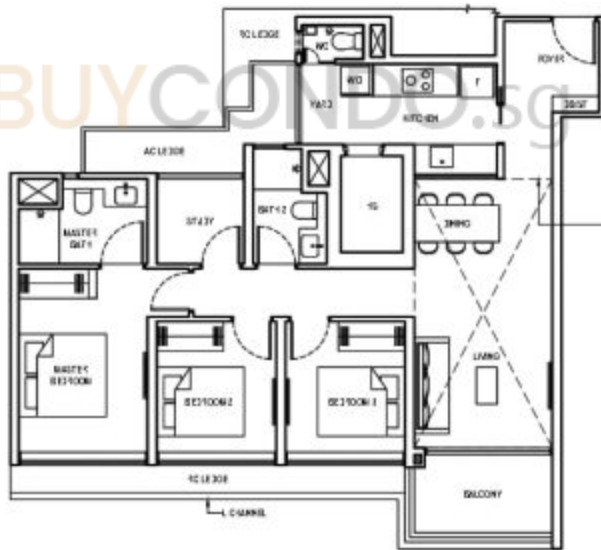
TYPE 3BR LS-PES

104 SQM/ 1119 SQFT
 (INCLUSIVE OF 6 SQM PES & 6 SQM AC LEDGE)
 BLOCK 6 #01-14 (mirrored)
 BLOCK 8 #01-27
 BLOCK 10 #01-35
 BLOCK 12 #01-41 (mirrored)
 BLOCK 16 #01-48
 BLOCK 18 #01-61 (mirrored)



TYPE 3BR LS

104 SQM/ 1119 SQFT
 (INCLUSIVE OF 6 SQM BALCONY & 6 SQM AC LEDGE)
 BLOCK 6 #02-14 to #17-14 (mirrored)
 BLOCK 8 #02-27 to #17-27
 BLOCK 10 #02-35 to #17-35
 BLOCK 12 #02-41 to #17-41 (mirrored)
 BLOCK 16 #02-48 to #17-48
 BLOCK 18 #02-61 to #17-61 (mirrored)



Dotted line denotes strata void complete with bulkhead at unit Type 3BR LS-H

TYPE 3BR LS-H

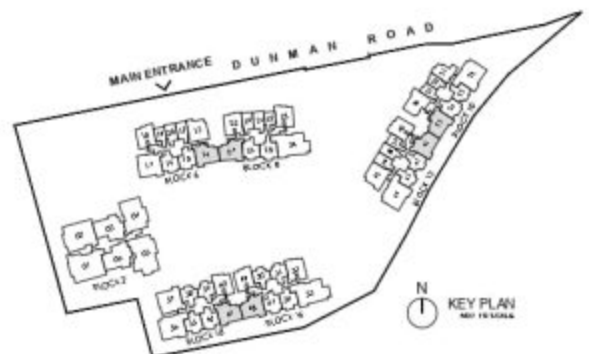
124 SQM/ 1335 SQFT
 (INCLUSIVE OF 6 SQM BALCONY,
 6 SQM AC LEDGE & 20 SQM STRATA VOID)
 BLOCK 6 #18-14 (mirrored)

LEGEND:

| | | | |
|----|--------------------|----|---|
| F | Fridge | HS | HOUSEHOLD SHELTER |
| WD | WASHER AND DRYER | AC | AIR-CONDITIONER |
| DB | DISTRIBUTION BOARD | RC | REINFORCED CONCRETE (EXCLUDED FROM STRATA AREA) |
| ST | STORE | VS | VOID SPACE (EXCLUDED FROM STRATA AREA) |
| WC | WATER CLOSET | | |



ALL PLANS ARE SUBJECT TO CHANGES BY THE RELEVANT AUTHORITIES.
 MEASUREMENTS ARE APPROXIMATE ONLY AND SUBJECT TO FINAL SURVEY.
 INFORMATION ACCURATE AT POINT OF PRINTING.
 SP NO. A176-00003-2022-SP03 DATED 15 MAY 2023



4 BEDROOM (GRAND)

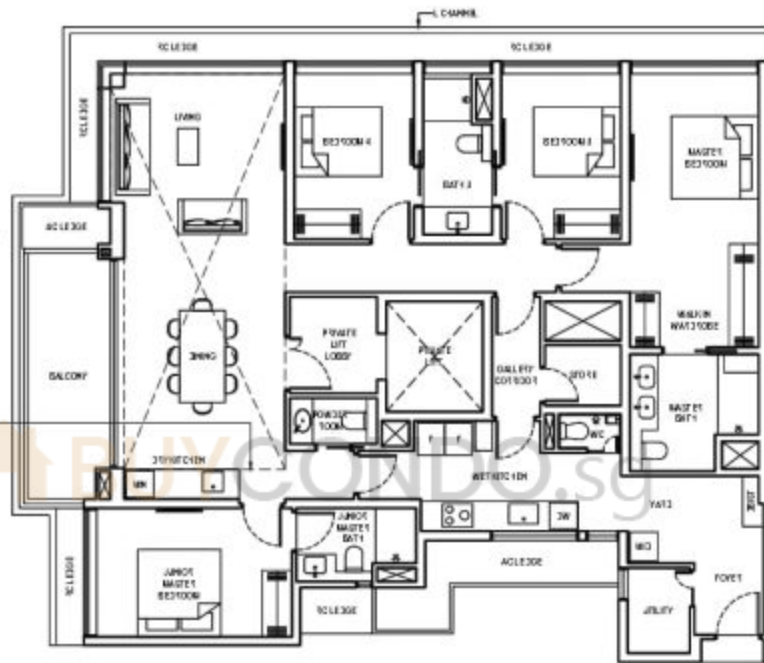
TYPE 4BR G1

179 SQM/1927 SQFT
(INCLUSIVE OF 11 SQM BALCONY, 9 SQM AC LEDGE
& 5 SQM PRIVATE LIFT LOBBY)
BLOCK 2 #03-02 to #17-02

TYPE 4BR G1-H

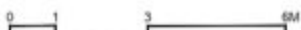
215 SQM/2314 SQFT
(INCLUSIVE OF 11 SQM BALCONY, 9 SQM AC LEDGE,
5 SQM PRIVATE LIFT LOBBY & 36 SQM STRATA VOID)
BLOCK 2 #18-02

Dotted line denotes strata void complete with bulkhead at unit Type 4BR G1-H



LEGEND:

| | | | |
|-----|--------------------|----|---|
| F | FIDGE | WN | WINE CHILLER |
| W/D | WASHER AND DRYER | DW | DISHWASHER |
| DB | DISTRIBUTION BOARD | AC | AIR-CONDITIONER |
| ST | STORE | RC | REINFORCED CONCRETE (EXCLUDED FROM STRATA AREA) |
| WC | WATER CLOSET | VS | VOID SPACE (EXCLUDED FROM STRATA AREA) |



ALL PLANS ARE SUBJECT TO CHANGES BY THE RELEVANT AUTHORITIES.
MEASUREMENTS ARE APPROXIMATE ONLY AND SUBJECT TO FINAL SURVEY.
INFORMATION ACCURATE AT POINT OF PRINTING.
BP NO: A176-05003-2022-BP03 DATED 15 MAY 2023



N
KEY PLAN
NOT TO SCALE

4 BEDROOM (GRAND)

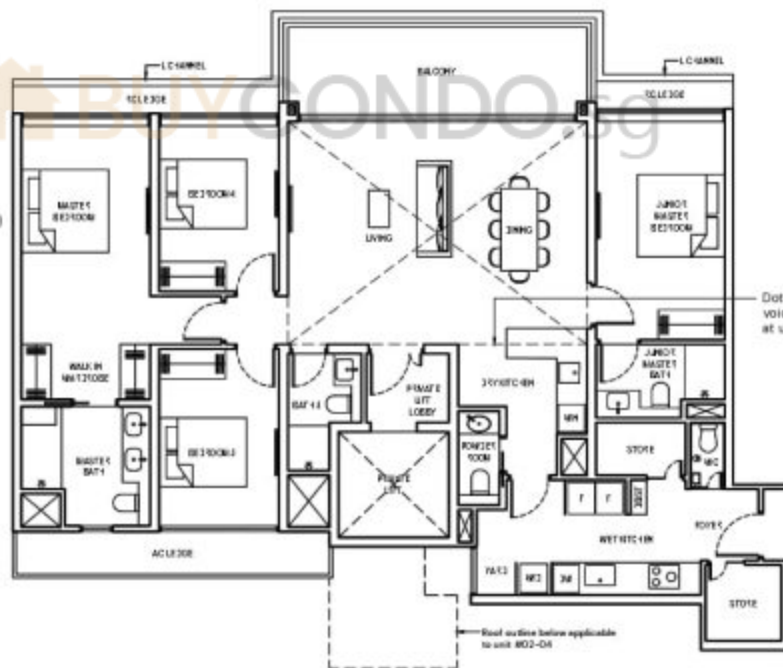
TYPE 4BR G2-PES

166 SQM/ 1787 SQFT
 (INCLUSIVE OF 15 SQM PES, 7 SQM AC LEDGE
 & 4 SQM PRIVATE LFT LOBBY)
 BLOCK 2 #01-04



TYPE 4BR G2

166 SQM/ 1787 SQFT
 (INCLUSIVE OF 15 SQM BALCONY, 7 SQM AC LEDGE
 & 4 SQM PRIVATE LFT LOBBY)
 BLOCK 2 #02-04 to #17-04



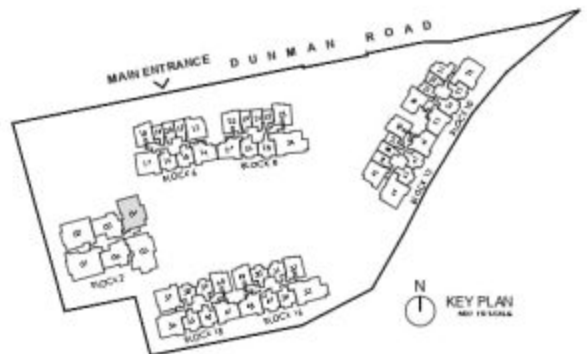
TYPE 4BR G2-H

200 SQM/ 2153 SQFT
 (INCLUSIVE OF 15 SQM BALCONY, 7 SQM AC LEDGE,
 4 SQM PRIVATE LFT LOBBY & 34 SQM STRATA VOID)
 BLOCK 2 #18-04



Dotted line denotes strata void complete with bulkhead at unit Type 4BR G2-H

MAIN ENTRANCE DUNMAN ROAD



LEGEND:

- | | | | |
|-----|--------------------|----|---|
| F | Fridge | WN | WINE CHILLER |
| W/D | WASHER AND DRYER | DW | DISHWASHER |
| DB | DISTRIBUTION BOARD | AC | AIR-CONDITIONER |
| ST | STORE | RC | REINFORCED CONCRETE (EXCLUDED FROM STRATA AREA) |
| WC | WATER CLOSET | ⊠ | VOID SPACE (EXCLUDED FROM STRATA AREA) |



ALL PLANS ARE SUBJECT TO CHANGES BY THE RELEVANT AUTHORITIES.
 MEASUREMENTS ARE APPROXIMATE ONLY AND SUBJECT TO FINAL SURVEY.
 INFORMATION ACCURATE AT POINT OF PRINTING.
 BP NO. A176-05003-2022-BP03 DATED 15 MAY 2023

4 BEDROOM (LUXURY)

TYPE 4BR-PES

120 SQM/ 1292 SQFT
 (INCLUSIVE OF 6 SQM PES & 8 SQM AC LEDGE)
 BLOCK 6 # 01-17
 BLOCK 18 # 01-57 (mirrored)



TYPE 4BR

120 SQM/ 1292 SQFT
 (INCLUSIVE OF 6 SQM BALCONY & 8 SQM AC LEDGE)
 BLOCK 6 # 02-17 to #17-17
 BLOCK 18 # 02-57 to #17-57 (mirrored)



TYPE 4BR-H

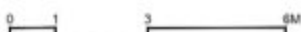
141 SQM/ 1518 SQFT
 (INCLUSIVE OF 6 SQM BALCONY
 8 SQM AC LEDGE & 21 SQM STRATA VOID)
 BLOCK 6 # 18-17
 BLOCK 18 # 18-57 (mirrored)



Dotted line denotes strata void complete with bulkhead at unit Type 4BR-H

LEGEND:

| | |
|-----------------------|--|
| F FRIDGE | HS HOUSEHOLD SHELTER |
| WD WASHER AND DRYER | AC AIR-CONDITIONER |
| DB DISTRIBUTION BOARD | RC REINFORCED CONCRETE (EXCLUDED FROM STRATA AREA) |
| ST STORE | VS VOID SPACE (EXCLUDED FROM STRATA AREA) |
| WC WATER CLOSET | |



ALL PLANS ARE SUBJECT TO CHANGES BY THE RELEVANT AUTHORITIES.
 MEASUREMENTS ARE APPROXIMATE ONLY AND SUBJECT TO FINAL SURVEY.
 INFORMATION ACCURATE AT POINT OF PRINTING.
 BP NO. A176-05003-2022-BP03 DATED 15 MAY 2023



4 BEDROOM (LUXURY)

TYPE 4BR L-PES1

132 SQM/1421 SQFT
 (INCLUSIVE OF 8 SQM PES, 7 SQM AC LEDGE
 & 4 SQM PRIVATE LIFT LOBBY)
 BLOCK 12 #01-44
 BLOCK 18 #01-56



TYPE 4BR L-PES2

133 SQM/1432 SQFT
 (INCLUSIVE OF 8 SQM PES, 8 SQM AC LEDGE
 & 4 SQM PRIVATE LIFT LOBBY)
 BLOCK 10 #01-32 (mirrored)
 BLOCK 12 #01-44 to #01-44
 BLOCK 18 #01-56 to #01-56



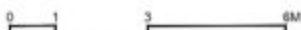
TYPE 4BR L

133 SQM/1432 SQFT
 (INCLUSIVE OF 8 SQM BALCONY, 8 SQM AC LEDGE
 & 4 SQM PRIVATE LIFT LOBBY)
 BLOCK 10 #02-32 to #02-32 (mirrored)
 BLOCK 12 #02-44 to #02-44
 BLOCK 18 #02-56 to #02-56

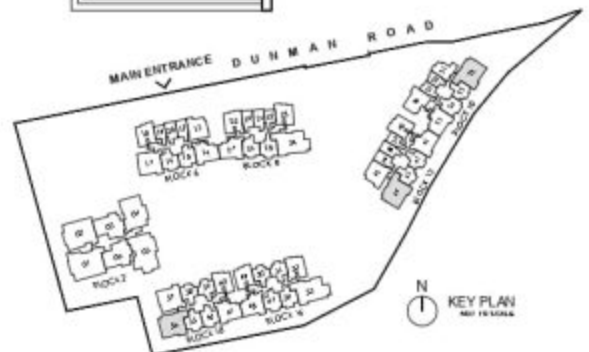


LEGEND:

| | | | |
|----|--------------------|----|---|
| F | FRIDGE | HS | HOUSEHOLD SHELTER |
| WD | WASHER AND DRYER | WC | WINE CHILLER |
| DB | DISTRIBUTION BOARD | AC | AIR-CONDITIONER |
| ST | STORE | RC | REINFORCED CONCRETE (EXCLUDED FROM STRATA AREA) |
| WC | WATER CLOSET | VS | VOID SPACE (EXCLUDED FROM STRATA AREA) |



ALL PLANS ARE SUBJECT TO CHANGES BY THE RELEVANT AUTHORITIES.
 MEASUREMENTS ARE APPROXIMATE ONLY AND SUBJECT TO FINAL SURVEY.
 INFORMATION ACCURATE AT POINT OF PRINTING.
 BP NO. A176-05003-2022-BP01 DATED 15 MAY 2023



5 BEDROOM (GRAND)

TYPE 5BR G1

206 SQM/ 2217 SQFT
 (INCLUSIVE OF 12 SQM BALCONY,
 10 SQM AC LEDGE & 4 SQM
 PRIVATE LIFT LOBBY)
 BLOCK 2 #03-01 to #17-01

TYPE 5BR G1-H

243 SQM/ 2615 SQFT
 (INCLUSIVE OF 12 SQM BALCONY,
 10 SQM AC LEDGE, 4 SQM PRIVATE
 LIFT LOBBY & 37 SQM STRATA VOID)
 BLOCK 2 #18-01

Dotted line denotes strata
 void complete with bulkhead
 at unit Type 5BR G1-H

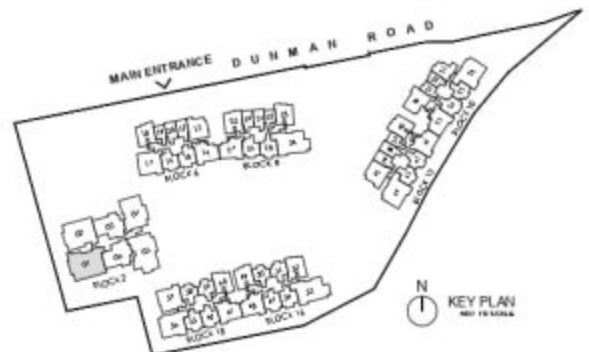


LEGEND:

| | | | |
|-----|--------------------|----|---|
| F | FRODGE | WN | WINE CHILLER |
| W/D | WASHER AND DRYER | DW | DISHWASHER |
| DB | DISTRIBUTION BOARD | AC | AIR-CONDITIONER |
| ST | STORE | RC | REINFORCED CONCRETE (EXCLUDED FROM STRATA AREA) |
| WC | WATER CLOSET | VS | VOID SPACE (EXCLUDED FROM STRATA AREA) |
| HG | HOUSEHOLD SHELTER | | |



ALL PLANS ARE SUBJECT TO CHANGES BY THE RELEVANT AUTHORITIES.
 MEASUREMENTS ARE APPROXIMATE ONLY AND SUBJECT TO FINAL SURVEY.
 INFORMATION ACCURATE AT POINT OF PRINTING.
 SP NO. A176-00003-2022-SP03 DATED 15 MAY 2023



5 BEDROOM (GRAND)

TYPE 5BR G2-PES

188 SQM/ 2131 SQFT
(INCLUSIVE OF 15 SQM PES,
9 SQM AC LEDGE & 3 SQM
PRIVATE LIFT LOBBY)
BLOCK 2 #01-05

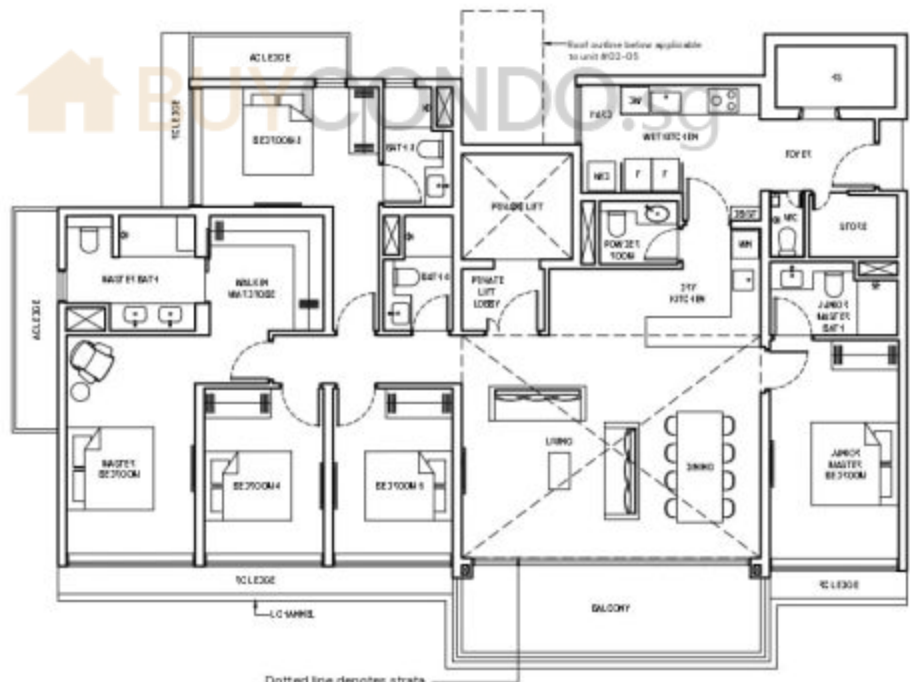


TYPE 5BR G2

188 SQM/ 2131 SQFT
(INCLUSIVE OF 15 SQM BALCONY,
9 SQM AC LEDGE & 3 SQM
PRIVATE LIFT LOBBY)
BLOCK 2 #02-05 to #17-05

TYPE 5BR G2-H

232 SQM/ 2497 SQFT
(INCLUSIVE OF 15 SQM BALCONY,
9 SQM AC LEDGE, 3 SQM PRIVATE
LIFT LOBBY & 34 SQM STRATA VOID)
BLOCK 2 #18-05



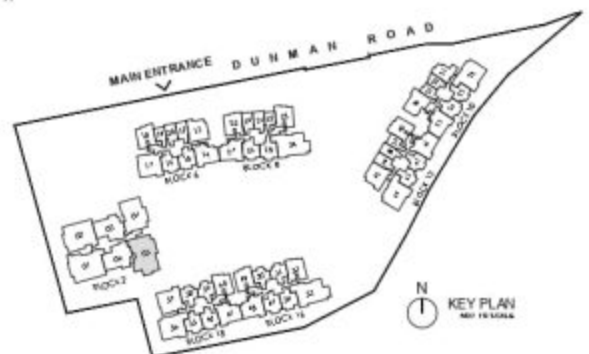
Dotted line denotes strata
void complete with bulkhead
at unit Type 5BR G2-H

LEGEND:

| | | | |
|-----|--------------------|----|---|
| F | Fridge | WN | WINE CHILLER |
| W/D | WASHER AND DRYER | DW | DISHWASHER |
| DB | DISTRIBUTION BOARD | AC | AIR-CONDITIONER |
| ST | STORE | RC | REINFORCED CONCRETE (EXCLUDED FROM STRATA AREA) |
| WC | WATER CLOSET | VS | VOID SPACE (EXCLUDED FROM STRATA AREA) |
| HG | HOUSEHOLD SHELTER | | |

0 1 3 6M

ALL PLANS ARE SUBJECT TO CHANGES BY THE RELEVANT AUTHORITIES.
MEASUREMENTS ARE APPROXIMATE ONLY AND SUBJECT TO FINAL SURVEY.
INFORMATION ACCURATE AT POINT OF PRINTING.
SP NO. A176-05003-2022-SP03 DATED 15 MAY 2023



5 BEDROOM (LUXURY)

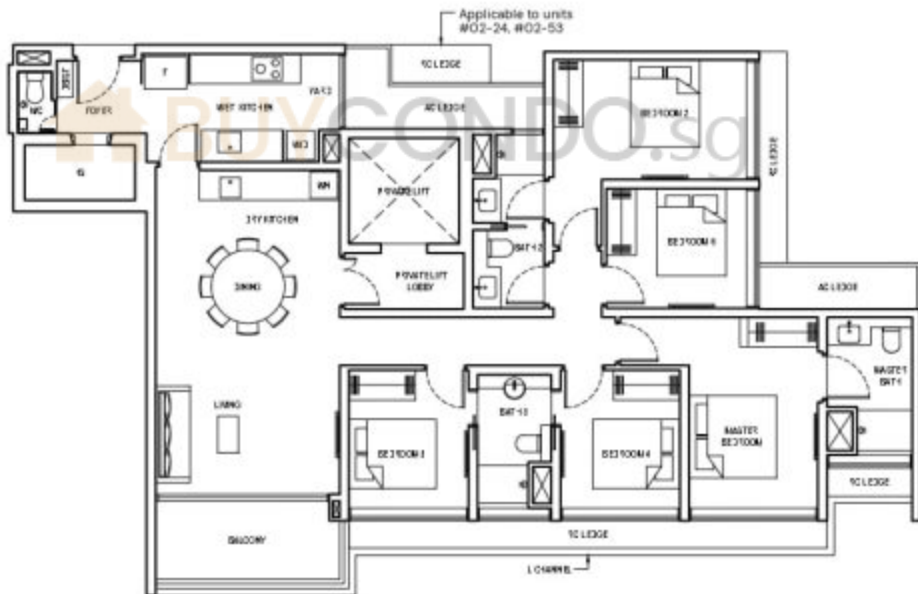
TYPE 5BR L-PES

156 SQM/ 1679 SQFT
 (INCLUSIVE OF 8 SQM PES,
 9 SQM AC LEDGE & 4 SQM
 PRIVATE LIFT LOBBY)
 BLOCK B #01-24
 BLOCK 16 #01-53



TYPE 5BR L

157 SQM/ 1690 SQFT
 (INCLUSIVE OF 8 SQM BALCONY,
 9 SQM AC LEDGE & 4 SQM
 PRIVATE LIFT LOBBY)
 BLOCK B #02-24 to #17-24
 BLOCK 16 #02-53 to #17-53



LEGEND:

| | | | |
|----|--------------------|----|---|
| F | FRIDGE | HS | HOUSEHOLD SHELTER |
| WD | WASHER AND DRYER | WC | WINE CHILLER |
| DB | DISTRIBUTION BOARD | AC | AIR-CONDITIONER |
| ST | STORE | RC | REINFORCED CONCRETE (EXCLUDED FROM STRATA AREA) |
| WC | WATER CLOSET | VS | VOID SPACE (EXCLUDED FROM STRATA AREA) |

0 1 3 6M

ALL PLANS ARE SUBJECT TO CHANGES BY THE RELEVANT AUTHORITIES.
 MEASUREMENTS ARE APPROXIMATE ONLY AND SUBJECT TO FINAL SURVEY.
 INFORMATION ACCURATE AT POINT OF PRINTING.
 SP NO. A176-05003-2022-SP03 DATED 15 MAY 2023



KEY PLAN
 NOT TO SCALE

PENTHOUSE (GRAND)

TYPE PH-1

221 SQM/ 2379 SQFT
 (INCLUSIVE OF 16 SQM BALCONY,
 9 SQM AC LEDGE & 38 SQM STRATA VOID)
 BLOCK ID #18-34



Dotted line denotes strata void complete with bulkhead

LEGEND:

| | | | |
|-----|--------------------|----|---|
| F | Fridge | WN | WINE CHILLER |
| W/D | WASHER AND DRYER | DW | DISHWASHER |
| DB | DISTRIBUTION BOARD | AC | AIR-CONDITIONER |
| ST | STOVE | RC | REINFORCED CONCRETE (EXCLUDED FROM STRATA AREA) |
| WC | WATER CLOSET | VS | VOID SPACE (EXCLUDED FROM STRATA AREA) |
| HG | HOUSEHOLD SHELTER | | |



ALL PLANS ARE SUBJECT TO CHANGES BY THE RELEVANT AUTHORITIES.
 MEASUREMENTS ARE APPROXIMATE ONLY AND SUBJECT TO FINAL SURVEY.
 INFORMATION ACCURATE AT POINT OF PRINTING.
 BP NO. A176-05003-2022-BP03 DATED 15 MAY 2023



PENTHOUSE (GRAND)

TYPE PH-2

217 SQM/ 2336 SQFT
 (INCLUSIVE OF 17 SQM BALCONY,
 9 SQM AC LEDGE & 38 SQM STRATA VOID)
 BLOCK 12 #18-41



LEGEND:

| | | | |
|-----|--------------------|----|---|
| F | FRIDGE | WC | WINE CLOSET |
| W/D | WASHER AND DRYER | RC | REINFORCED CONCRETE (EXCLUDED FROM STRATA AREA) |
| DB | DISTRIBUTION BOARD | VS | VOID SPACE (EXCLUDED FROM STRATA AREA) |
| ST | STORE | | |
| WC | WATER CLOSET | | |
| HG | HOUSEHOLD SHELTER | | |
| WN | WINE CHILLER | | |
| DW | DISHWASHER | | |
| AC | AIR-CONDITIONER | | |



ALL PLANS ARE SUBJECT TO CHANGES BY THE RELEVANT AUTHORITIES.
 MEASUREMENTS ARE APPROXIMATE ONLY AND SUBJECT TO FINAL SURVEY.
 INFORMATION ACCURATE AT POINT OF PRINTING.
 BP NO. A176-05003-2022-BP03 DATED 15 MAY 2023



PENTHOUSE (GRAND)

TYPE PH-4

226 SQM/2433 SQFT
 (INCLUSIVE OF 18 SQM BALCONY,
 9 SQM AC LEDGE & 38 SQM STRATA VOID)
 BLOCK 16 #18-47
 BLOCK 18 #18-61 (mirrored)



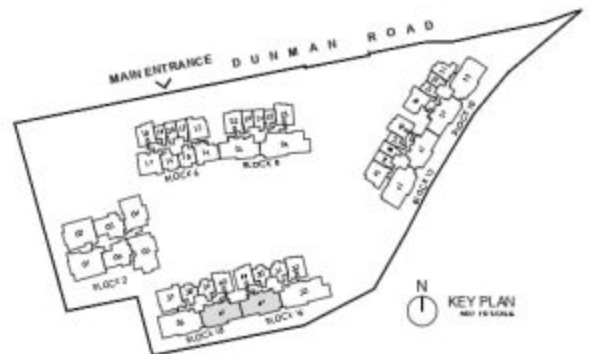
Dotted line denotes strata void complete with bulkhead

LEGEND:

| | | | |
|-----|--------------------|----|---|
| F | FIDGE | WN | WINE CHILLER |
| W/D | WASHER AND DRYER | DW | DISHWASHER |
| DB | DISTRIBUTION BOARD | AC | AIR-CONDITIONER |
| ST | STOVE | RC | REINFORCED CONCRETE (EXCLUDED FROM STRATA AREA) |
| WC | WATER CLOSET | VS | VOID SPACE (EXCLUDED FROM STRATA AREA) |
| HG | HOUSEHOLD SHELTER | | |



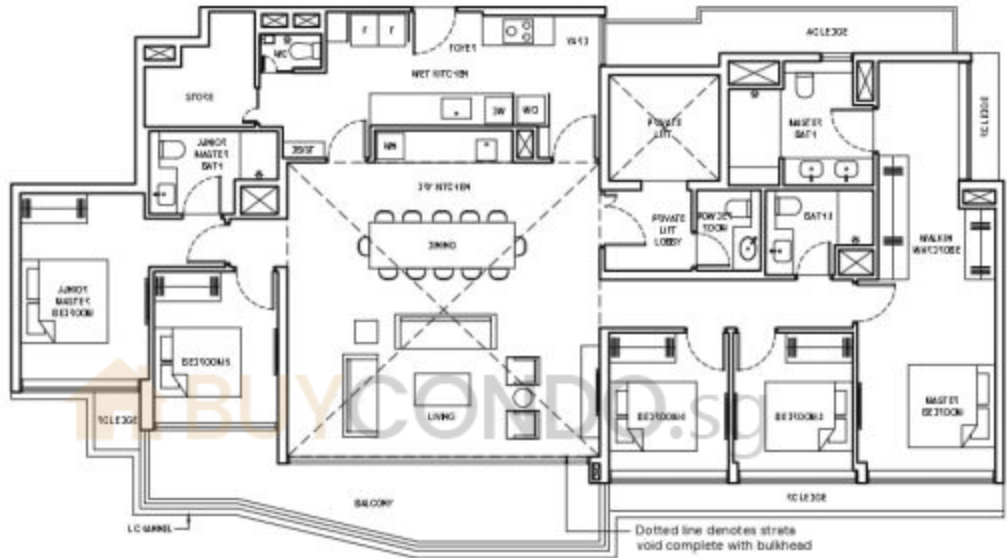
ALL PLANS ARE SUBJECT TO CHANGES BY THE RELEVANT AUTHORITIES.
 MEASUREMENTS ARE APPROXIMATE ONLY AND SUBJECT TO FINAL SURVEY.
 INFORMATION ACCURATE AT POINT OF PRINTING.
 BP NO. A176-05003-2022-BP03 DATED 15 MAY 2023



PENTHOUSE (GRAND)

TYPE PH-5

247 SQM/ 2659 SQFT
 (INCLUSIVE OF 18 SQM BALCONY, 9 SQM AC LEDGE,
 3 SQM PRIVATE LIFT LOBBY & 46 SQM STRATA VOID)
 BLOCK 10 #18-32
 BLOCK 12 #18-43 (mirrored)



LEGEND:

| | | | |
|-----|--------------------|----|---|
| F | FIDGE | WN | WINE CHILLER |
| W/D | WASHER AND DRYER | DW | DISHWASHER |
| DB | DISTRIBUTION BOARD | AC | AIR-CONDITIONER |
| ST | STORE | RC | REINFORCED CONCRETE (EXCLUDED FROM STRATA AREA) |
| WC | WATER CLOSET | VS | VOID SPACE (EXCLUDED FROM STRATA AREA) |



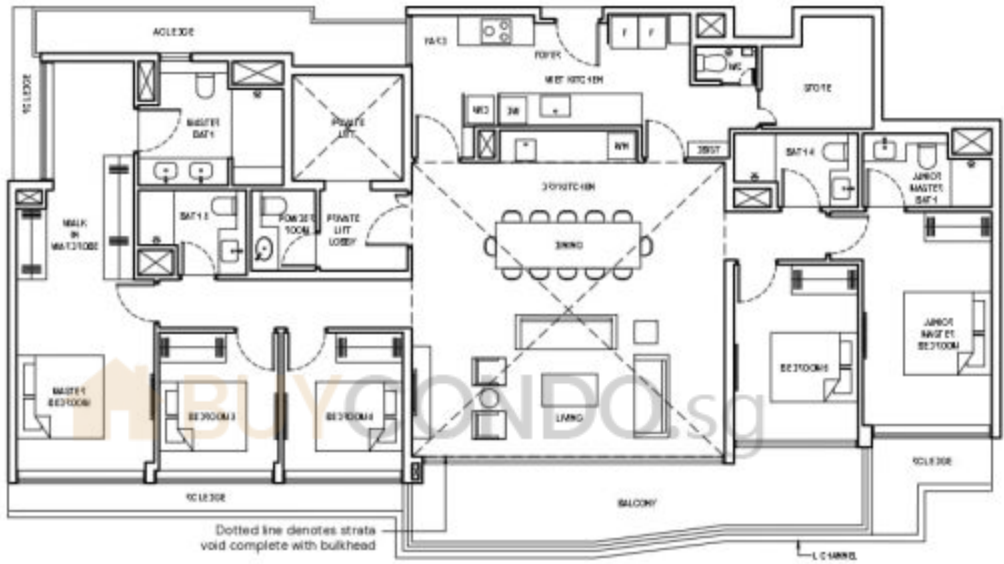
ALL PLANS ARE SUBJECT TO CHANGES BY THE RELEVANT AUTHORITIES.
 MEASUREMENTS ARE APPROXIMATE ONLY AND SUBJECT TO FINAL SURVEY.
 INFORMATION ACCURATE AT POINT OF PRINTING.
 BP NO. A176-05003-2022-BP04 DATED 15 MAY 2023



PENTHOUSE (GRAND)

TYPE PH-6

256 SQM/ 2756 SQFT
 (INCLUSIVE OF 19 SQM BALCONY, 9 SQM AC LEDGE,
 3 SQM PRIVATE LIFT LOBBY & 46 SQM STRATA VOID)
 BLOCK 18 # 18-55

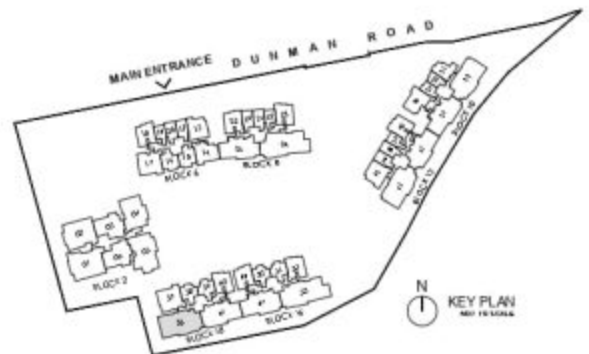


LEGEND:

| | | | |
|-----|--------------------|----|---|
| F | FRIDGE | WN | WINE CHILLER |
| W/D | WASHER AND DRYER | DW | DISHWASHER |
| DB | DISTRIBUTION BOARD | AC | AIR-CONDITIONER |
| ST | STORE | RC | REINFORCED CONCRETE (EXCLUDED FROM STRATA AREA) |
| WC | WATER CLOSET | | VOID SPACE (EXCLUDED FROM STRATA AREA) |



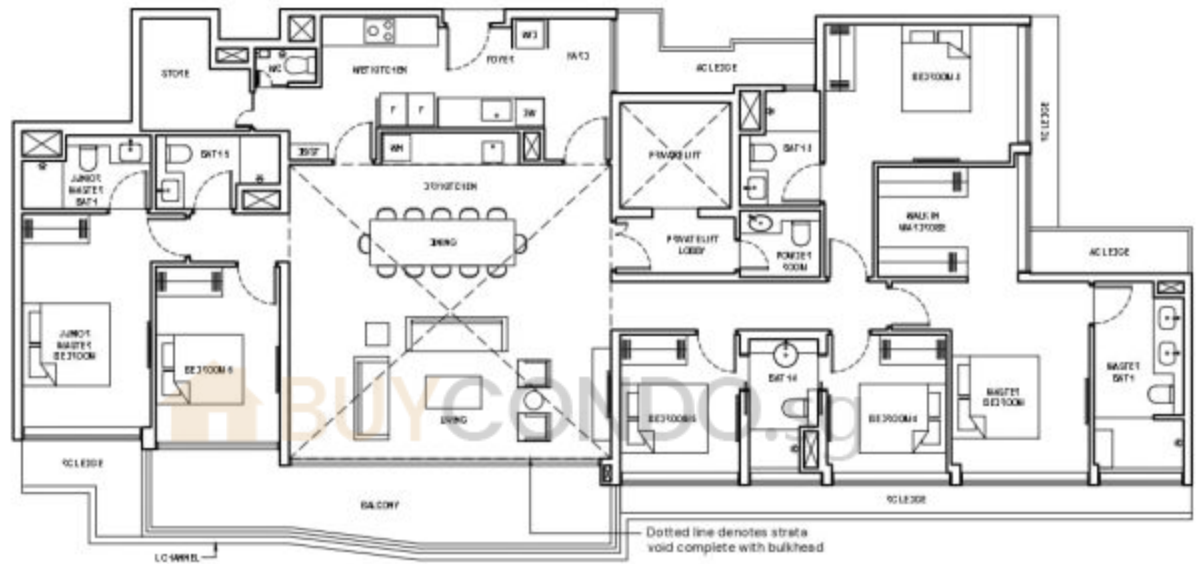
ALL PLANS ARE SUBJECT TO CHANGES BY THE RELEVANT AUTHORITIES.
 MEASUREMENTS ARE APPROXIMATE ONLY AND SUBJECT TO FINAL SURVEY.
 INFORMATION ACCURATE AT POINT OF PRINTING.
 BP NO. A176-05003-2022-BP03 DATED 15 MAY 2023



PENTHOUSE (GRAND)

TYPE PH-7

284 SQM/ 3057 SQFT
 (INCLUSIVE OF 19 SQM BALCONY, 9 SQM AC LEDGE,
 4 SQM PRIVATE LIFT LOBBY & 48 SQM STRATA VOID)
 BLOCK 16 # 16-53



LEGEND:

| | | | |
|-----|--------------------|----|---|
| F | FRIDGE | WC | WINE CLOSET |
| W/D | WASHER AND DRYER | AC | AIR-CONDITIONER |
| DB | DISTRIBUTION BOARD | RC | REINFORCED CONCRETE (EXCLUDED FROM STRATA AREA) |
| ST | STORE | □ | VOID SPACE (EXCLUDED FROM STRATA AREA) |
| WC | WATER CLOSET | | |
| WN | WINE CHILLER | | |
| DW | DISHWASHER | | |



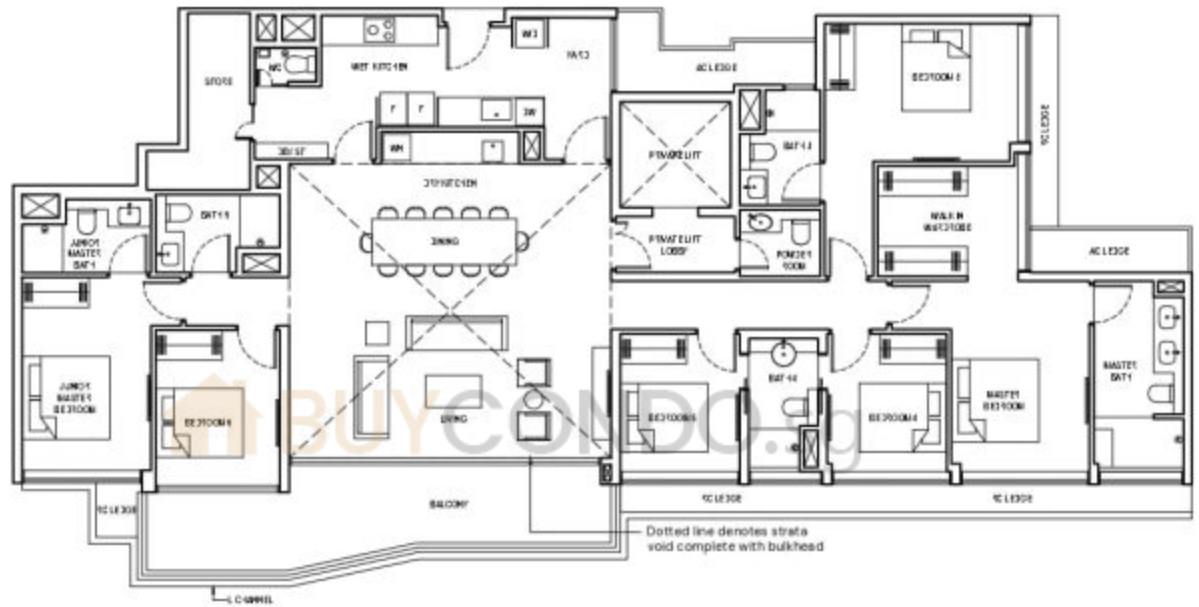
ALL PLANS ARE SUBJECT TO CHANGES BY THE RELEVANT AUTHORITIES.
 MEASUREMENTS ARE APPROXIMATE ONLY AND SUBJECT TO FINAL SURVEY.
 INFORMATION ACCURATE AT POINT OF PRINTING.
 SP NO. A176-05003-2022-SP03 DATED 15 MAY 2023



PENTHOUSE (GRAND)

TYPE PH-8

285 SQM/ 3066 SQFT
 (INCLUSIVE OF 18 SQM BALCONY, 9 SQM AC LEDGE,
 4 SQM PRIVATE LIFT LOBBY & 48 SQM STRATA VOID)
 BLOCK B # 18-24



LEGEND:

- | | | | |
|-----|--------------------|----|---|
| F | FRIDGE | WC | WINE CHILLER |
| W/D | WASHER AND DRYER | DW | DISHWASHER |
| DB | DISTRIBUTION BOARD | AC | AIR-CONDITIONER |
| ST | STORE | RC | REINFORCED CONCRETE (EXCLUDED FROM STRATA AREA) |
| WC | WATER CLOSET | ⊠ | VOID SPACE (EXCLUDED FROM STRATA AREA) |



ALL PLANS ARE SUBJECT TO CHANGES BY THE RELEVANT AUTHORITIES.
 MEASUREMENTS ARE APPROXIMATE ONLY AND SUBJECT TO FINAL SURVEY.
 INFORMATION ACCURATE AT POINT OF PRINTING.
 SP NO. A176-05003-2022-SP/8 DATED 15 MAY 2023

