

# DISCOVER THE PERFECT SPACE TO LIVE YOUR LIFE AND YOUR DREAMS

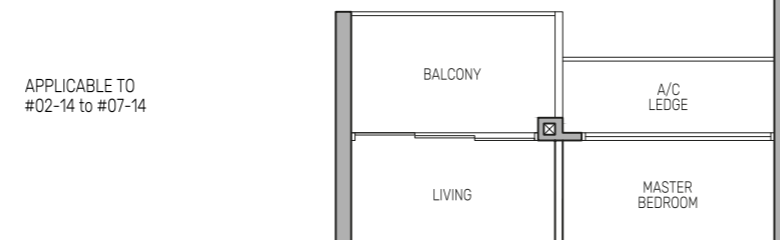
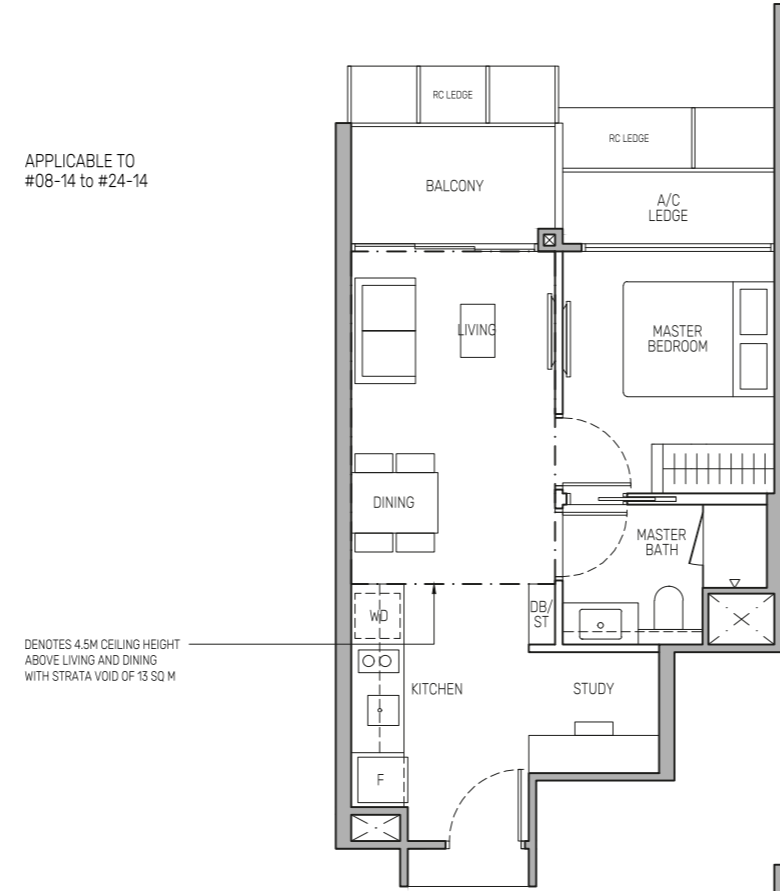
Take your pick from well-appointed 1-Bedroom + Study to 5-Bedroom luxury units at The Myst. Every layout is designed to be versatile and optimised to meet your family size and anticipate your lifestyle needs.

## 1-BEDROOM + STUDY

Type A1S

48 sq m / 517 sq ft

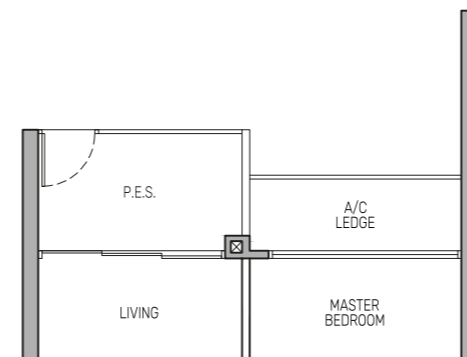
BLK 802 : #02-14 to #23-14



Type A1S(p)

48 sq m / 517 sq ft

BLK 802 : #01-14



Wall not allowed to be hacked or altered  
 Mirror Image  
 P.E.S. - Private Enclosed Space  
 WD - Washer Cum Dryer  
 WC - Water Closet  
 HS - Household Shelter  
 DB/ST - Distribution Board/Storage  
 RC - Reinforced Concrete  
 F - Fridge  
 A/C - Air-Conditioner

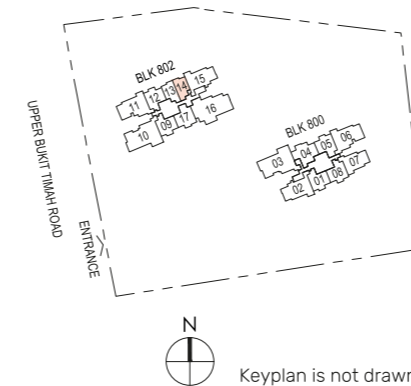
0 0.5 1 2 3 5M

Area includes air-conditioner (A/C) ledge, balcony and strata void area where applicable, and excludes among others, the RC - Reinforced Concrete Ledge. The demarcated strata void area is measured mid-wall to mid-wall. The plans are subject to change as may be approved by relevant authorities. All floor plans are approximate measurements only and are subject to final survey. The balcony shall not be enclosed unless with the approved balcony screen, more particularly illustrated under the header "Approved Balcony Screen".

Type A1S(d)

61 sq m / 657 sq ft  
(includes 13 sq m of strata void above living and dining with 4.5m ceiling height)

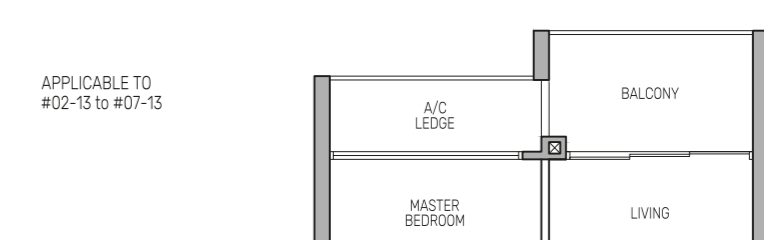
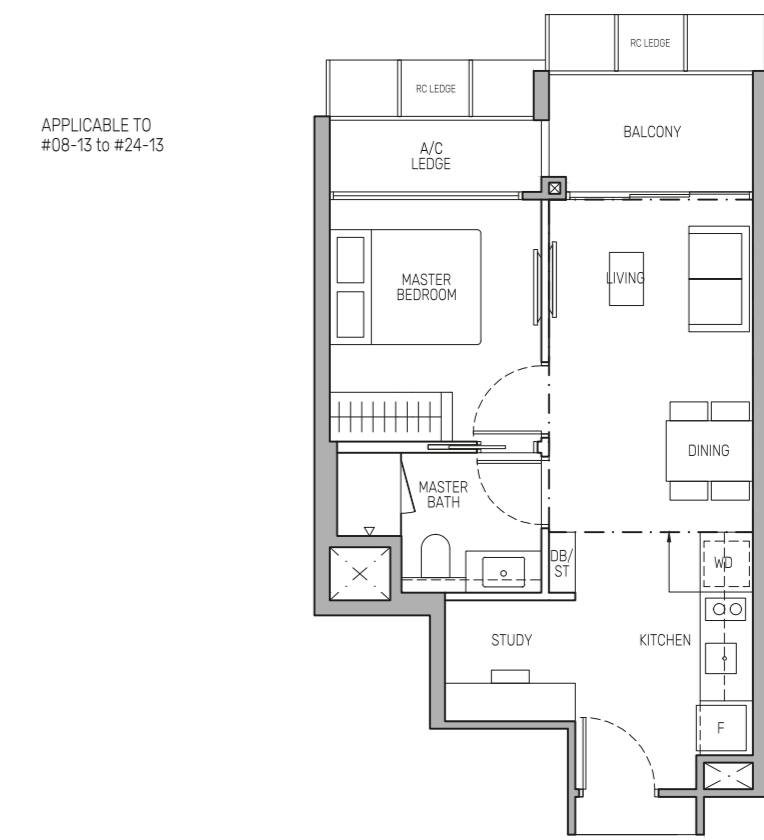
BLK 802 : #24-14



Type A1Sa

48 sq m / 517 sq ft

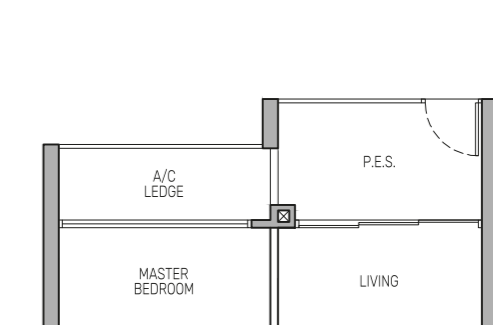
BLK 802 : #02-13 to #23-13



Type A1Sa(p)

48 sq m / 517 sq ft

BLK 802 : #01-13



Wall not allowed to be hacked or altered  
 Mirror Image  
 P.E.S. - Private Enclosed Space  
 WD - Washer Cum Dryer  
 WC - Water Closet  
 HS - Household Shelter  
 DB/ST - Distribution Board/Storage  
 RC - Reinforced Concrete  
 F - Fridge  
 A/C - Air-Conditioner

0 0.5 1 2 3 5M

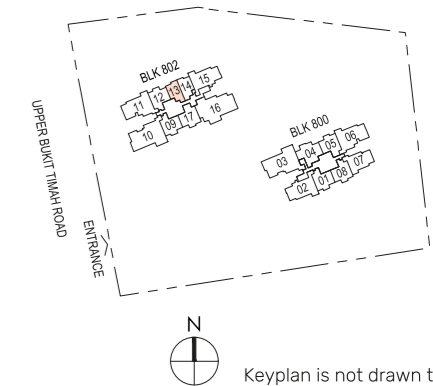
Area includes air-conditioner (A/C) ledge, balcony and strata void area where applicable, and excludes among others, the RC - Reinforced Concrete Ledge. The demarcated strata void area is measured mid-wall to mid-wall. The plans are subject to change as may be approved by relevant authorities. All floor plans are approximate measurements only and are subject to final survey. The balcony shall not be enclosed unless with the approved balcony screen, more particularly illustrated under the header "Approved Balcony Screen".

## 1-BEDROOM + STUDY

Type A1Sa(d)

61 sq m / 657 sq ft  
(includes 13 sq m of strata void above living and dining with 4.5m ceiling height)

BLK 802 : #24-13

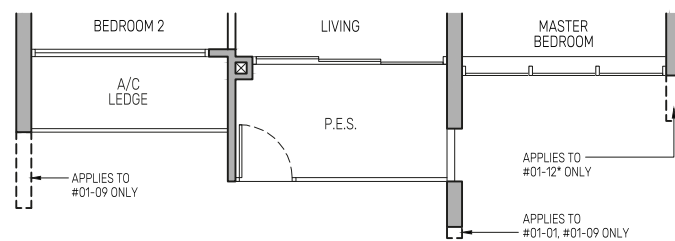
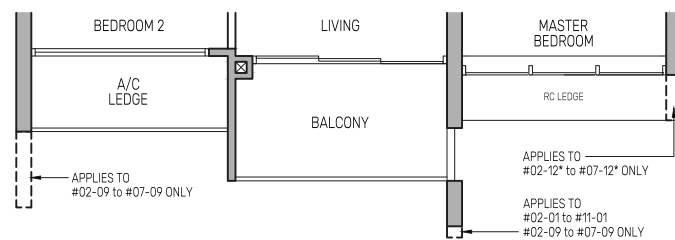
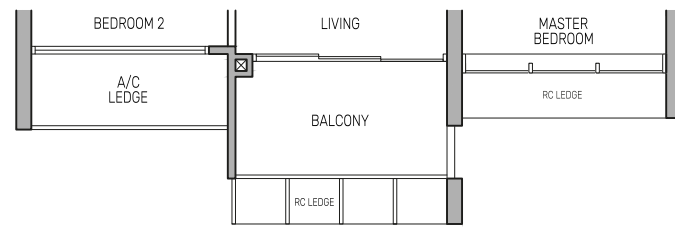
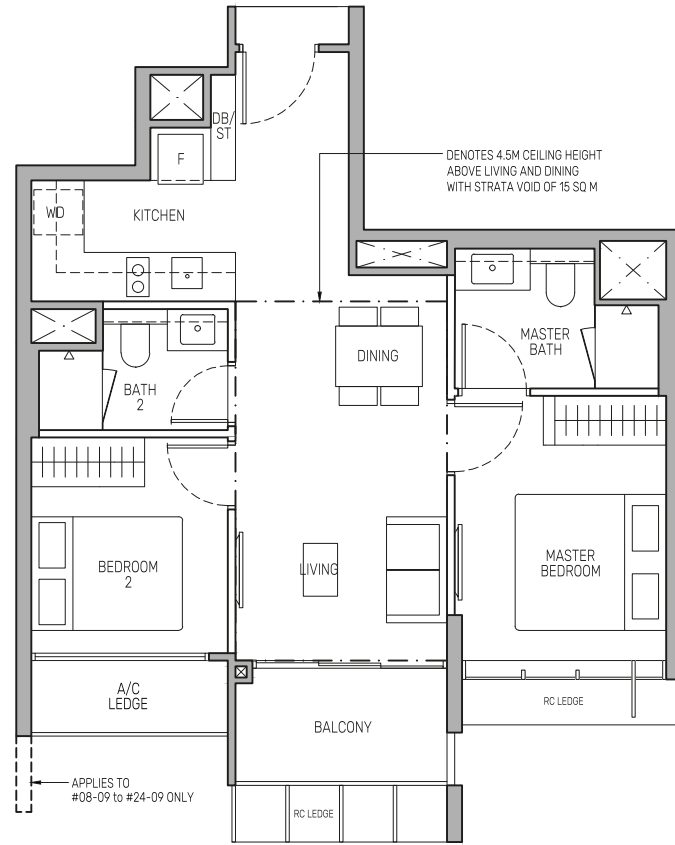


# 2-BEDROOM

## Type B1

63 sq m / 678 sq ft

BLK 800 : #02-01 to #23-01  
 BLK 802 : #02-09 to #23-09  
 BLK 802 : #02-12\* to #23-12\*



## Type B1(p)

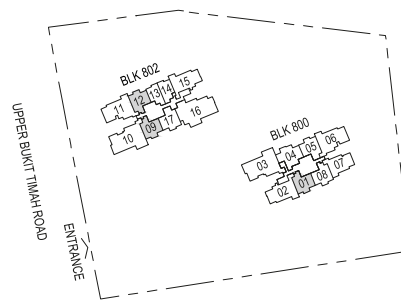
63 sq m / 678 sq ft

BLK 800 : #01-01  
 BLK 802 : #01-09  
 BLK 802 : #01-12\*

Wall not allowed to be hacked or altered  
 • Mirror Image  
 P.E.S. - Private Enclosed Space  
 WD - Washer Cum Dryer  
 WC - Water Closet  
 HS - Household Shelter  
 DB/ST - Distribution Board/Storage  
 RC - Reinforced Concrete  
 F - Fridge  
 A/C - Air-Conditioner



Area includes air-conditioner (A/C) ledge, balcony and strata void area where applicable, and excludes among others, the RC - Reinforced Concrete Ledge. The demarcated strata void area is measured mid-wall to mid-wall. The plans are subject to change as may be approved by relevant authorities. All floor plans are approximate measurements only and are subject to final survey. The balcony shall not be enclosed unless with the approved balcony screen, more particularly illustrated under the header "Approved Balcony Screen".



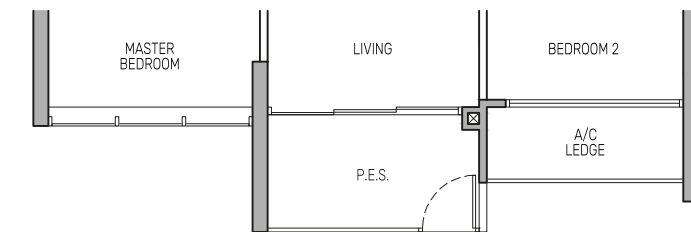
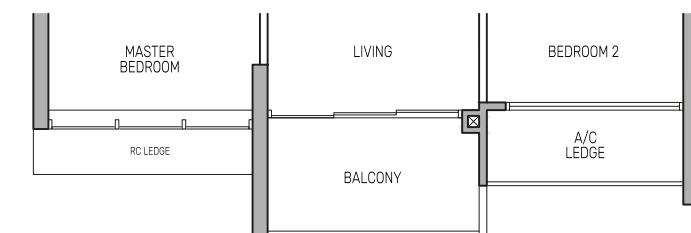
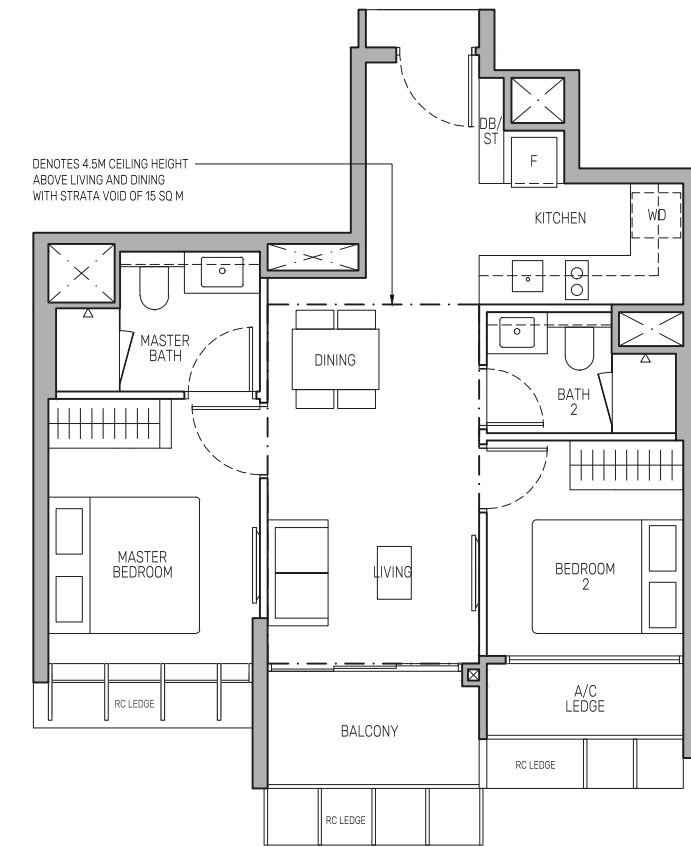
Keyplan is not drawn to scale

# 2-BEDROOM

## Type B1a(d)

78 sq m / 840 sq ft  
 (includes 15 sq m of strata void above living and dining with 4.5m ceiling height)

BLK 800 : #24-08



## Type B1a

63 sq m / 678 sq ft

BLK 800 : #02-08 to #23-08

APPLICABLE TO #12-08 to #24-08

APPLICABLE TO #02-08 to #11-08

## Type B1a(p)

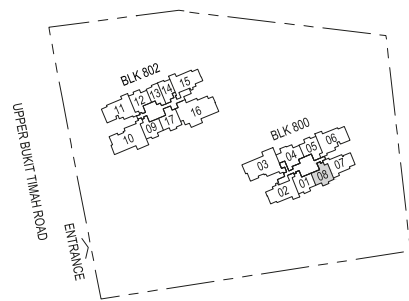
63 sq m / 678 sq ft

BLK 800 : #01-08

Wall not allowed to be hacked or altered  
 • Mirror Image  
 P.E.S. - Private Enclosed Space  
 WD - Washer Cum Dryer  
 WC - Water Closet  
 HS - Household Shelter  
 DB/ST - Distribution Board/Storage  
 RC - Reinforced Concrete  
 F - Fridge  
 A/C - Air-Conditioner



Area includes air-conditioner (A/C) ledge, balcony and strata void area where applicable, and excludes among others, the RC - Reinforced Concrete Ledge. The demarcated strata void area is measured mid-wall to mid-wall. The plans are subject to change as may be approved by relevant authorities. All floor plans are approximate measurements only and are subject to final survey. The balcony shall not be enclosed unless with the approved balcony screen, more particularly illustrated under the header "Approved Balcony Screen".



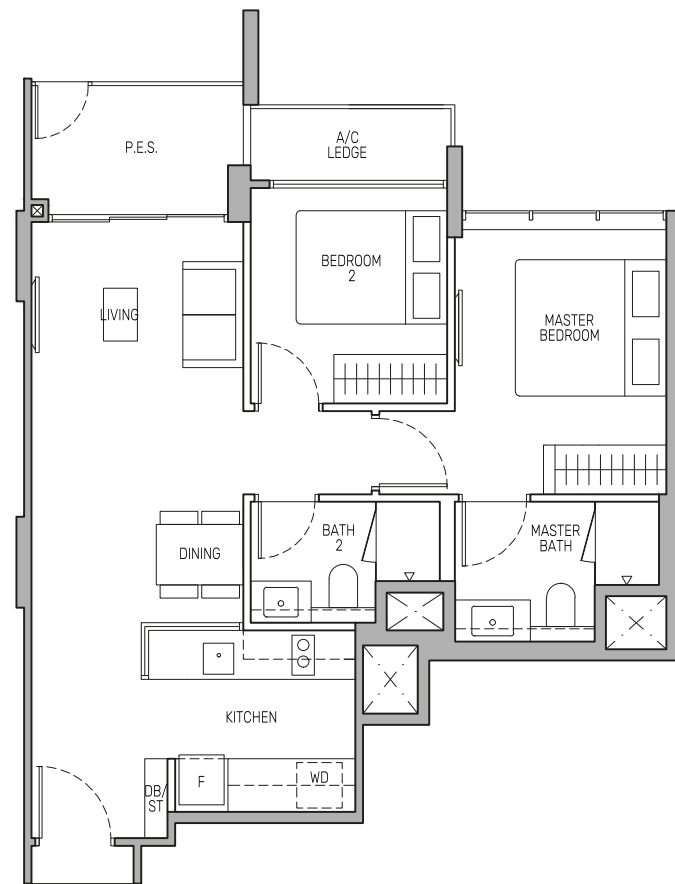
Keyplan is not drawn to scale

# 2-BEDROOM

## Type B2(p)

68 sq m / 732 sq ft

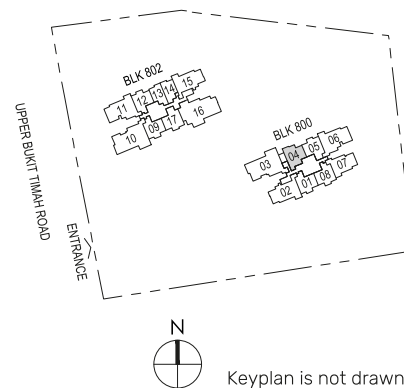
BLK 800 : #01-04



Wall not allowed to be hacked or altered  
 Mirror Image  
 P.E.S. - Private Enclosed Space  
 WD - Washer Cum Dryer  
 WC - Water Closet  
 HS - Household Shelter  
 DB/ST - Distribution Board/Storage  
 RC - Reinforced Concrete  
 F - Fridge  
 A/C - Air-Conditioner



Area includes air-conditioner (A/C) ledge, balcony and strata void area where applicable, and excludes among others, the RC - Reinforced Concrete Ledge. The demarcated strata void area is measured mid-wall to mid-wall. The plans are subject to change as may be approved by relevant authorities. All floor plans are approximate measurements only and are subject to final survey. The balcony shall not be enclosed unless with the approved balcony screen, more particularly illustrated under the header "Approved Balcony Screen".



Keyplan is not drawn to scale

# 2-BEDROOM + STUDY

## Type B3S

65 sq m / 700 sq ft

BLK 800 : #02-05\* to #23-05\*  
BLK 802 : #02-17 to #23-17

APPLICABLE TO #08-17 to #24-17

APPLICABLE TO #12-05\* to #24-05\*

APPLICABLE TO #02-17 to #07-17  
#02-05\* to #11-05\*

## Type B3S(p)

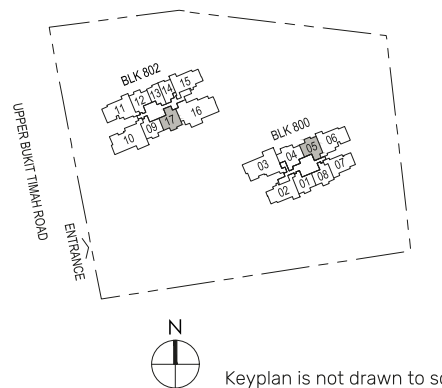
65 sq m / 700 sq ft

BLK 800 : #01-05\*  
BLK 802 : #01-17

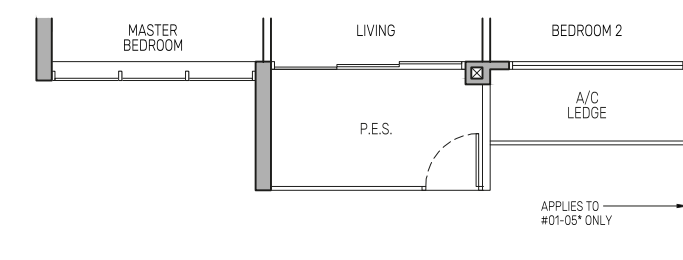
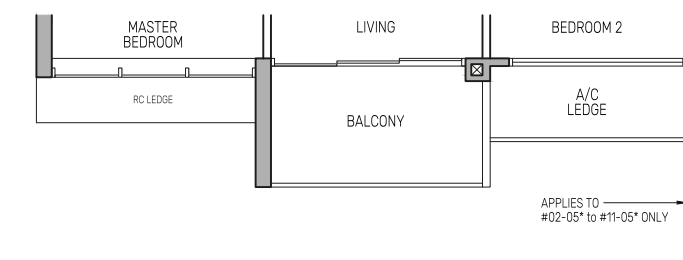
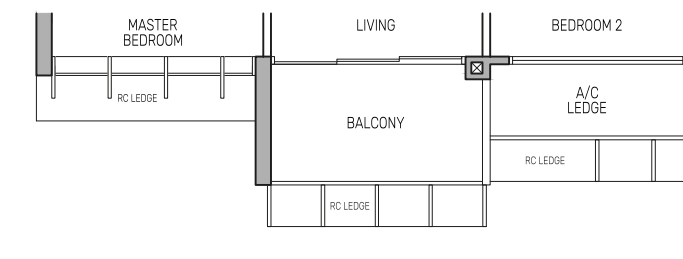
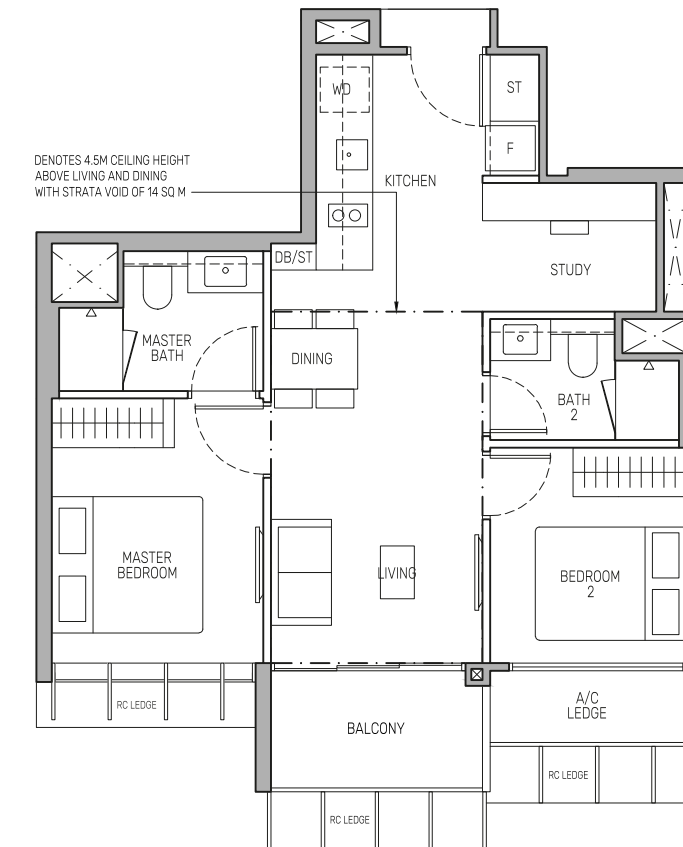
Wall not allowed to be hacked or altered  
 Mirror Image  
 P.E.S. - Private Enclosed Space  
 WD - Washer Cum Dryer  
 WC - Water Closet  
 HS - Household Shelter  
 DB/ST - Distribution Board/Storage  
 RC - Reinforced Concrete  
 F - Fridge  
 A/C - Air-Conditioner



Area includes air-conditioner (A/C) ledge, balcony and strata void area where applicable, and excludes among others, the RC - Reinforced Concrete Ledge. The demarcated strata void area is measured mid-wall to mid-wall. The plans are subject to change as may be approved by relevant authorities. All floor plans are approximate measurements only and are subject to final survey. The balcony shall not be enclosed unless with the approved balcony screen, more particularly illustrated under the header "Approved Balcony Screen".



Keyplan is not drawn to scale

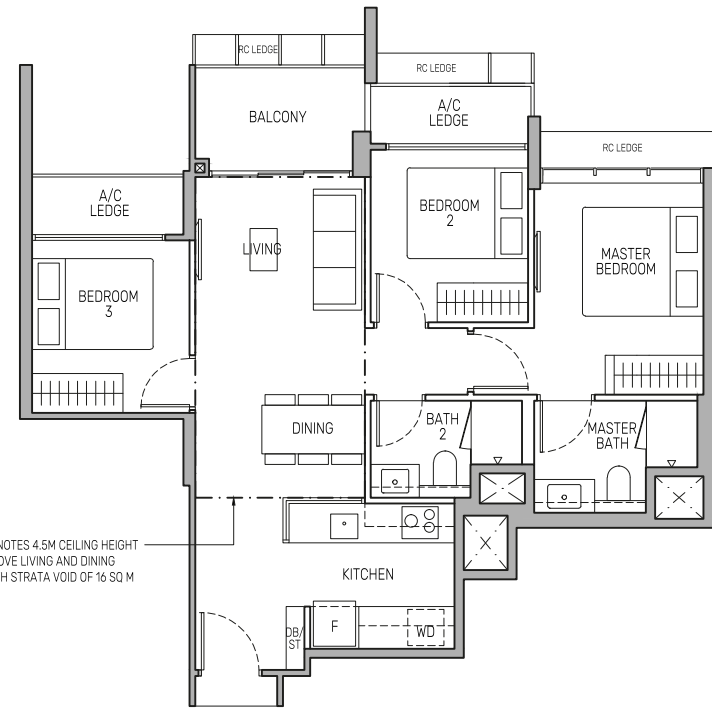


# 3-BEDROOM

## Type C1

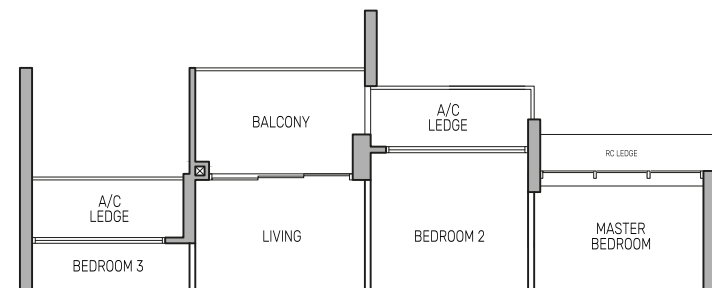
79 sq m / 850 sq ft

BLK 800 : #02-04 to #23-04



APPLICABLE TO #12-04 to #24-04

DENOTES 4.5M CEILING HEIGHT ABOVE LIVING AND DINING WITH STRATA VOID OF 16 SQ M



APPLICABLE TO #02-04 to #11-04

## Type C1(d)

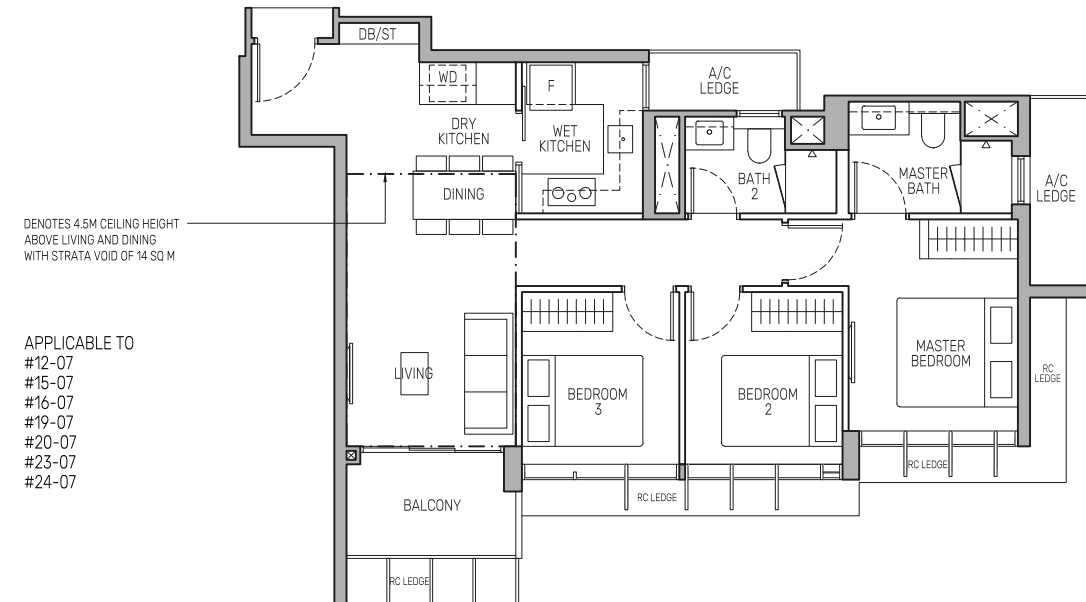
95 sq m / 1023 sq ft  
(includes 16 sq m of strata void above living and dining with 4.5m ceiling height)

BLK 800 : #24-04

## Type C2

85 sq m / 915 sq ft

BLK 800 : #02-07 to #23-07

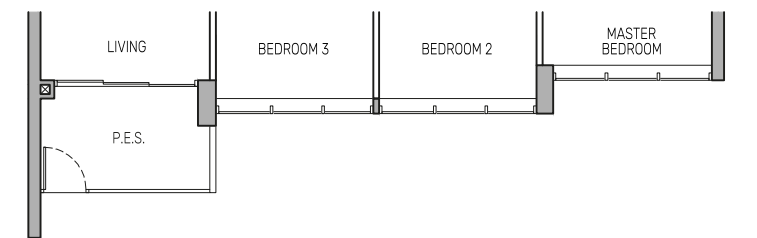
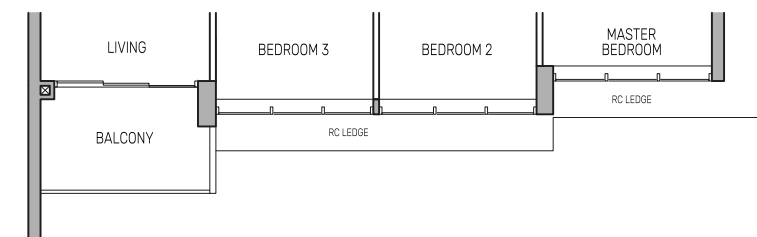
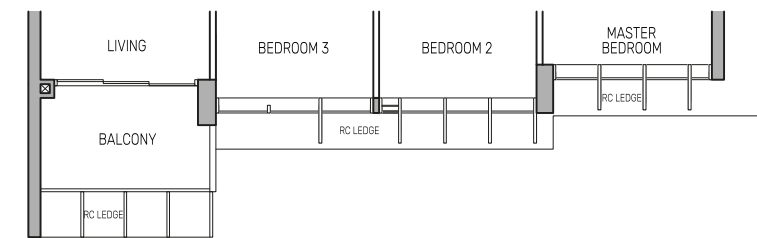


DENOTES 4.5M CEILING HEIGHT ABOVE LIVING AND DINING WITH STRATA VOID OF 14 SQ M

APPLICABLE TO #12-07 #15-07 #16-07 #19-07 #20-07 #23-07 #24-07

APPLICABLE TO #13-07 #14-07 #17-07 #18-07 #21-07 #22-07

APPLICABLE TO #02-07 to #11-07



## Type C2(p)

85 sq m / 915 sq ft

BLK 800 : #01-07

Wall not allowed to be hacked or altered  
• Mirror Image  
P.E.S. - Private Enclosed Space  
WD - Washer Cum Dryer  
WC - Water Closet  
HS - Household Shelter  
DB/ST - Distribution Board/Storage  
RC - Reinforced Concrete  
F - Fridge  
A/C - Air-Conditioner

0 0.5 1 2 3 5M

Area includes air-conditioner (A/C) ledge, balcony and strata void area where applicable, and excludes among others, the RC - Reinforced Concrete Ledge. The demarcated strata void area is measured mid-wall to mid-wall. The plans are subject to change as may be approved by relevant authorities. All floor plans are approximate measurements only and are subject to final survey. The balcony shall not be enclosed unless with the approved balcony screen, more particularly illustrated under the header "Approved Balcony Screen".



Keyplan is not drawn to scale

Wall not allowed to be hacked or altered  
• Mirror Image  
P.E.S. - Private Enclosed Space  
WD - Washer Cum Dryer  
WC - Water Closet  
HS - Household Shelter  
DB/ST - Distribution Board/Storage  
RC - Reinforced Concrete  
F - Fridge  
A/C - Air-Conditioner

0 0.5 1 2 3 5M

Area includes air-conditioner (A/C) ledge, balcony and strata void area where applicable, and excludes among others, the RC - Reinforced Concrete Ledge. The demarcated strata void area is measured mid-wall to mid-wall. The plans are subject to change as may be approved by relevant authorities. All floor plans are approximate measurements only and are subject to final survey. The balcony shall not be enclosed unless with the approved balcony screen, more particularly illustrated under the header "Approved Balcony Screen".



Keyplan is not drawn to scale

# 3-BEDROOM

## Type C2(d)

99 sq m / 1066 sq ft  
(includes 14 sq m of strata void above living and dining with 4.5m ceiling height)

BLK 800 : #24-07



# 3-BEDROOM PREMIUM + STUDY

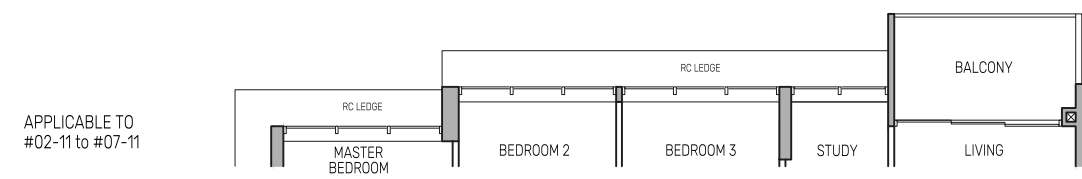
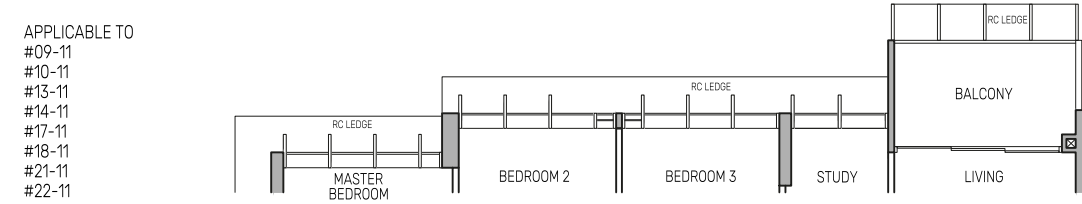
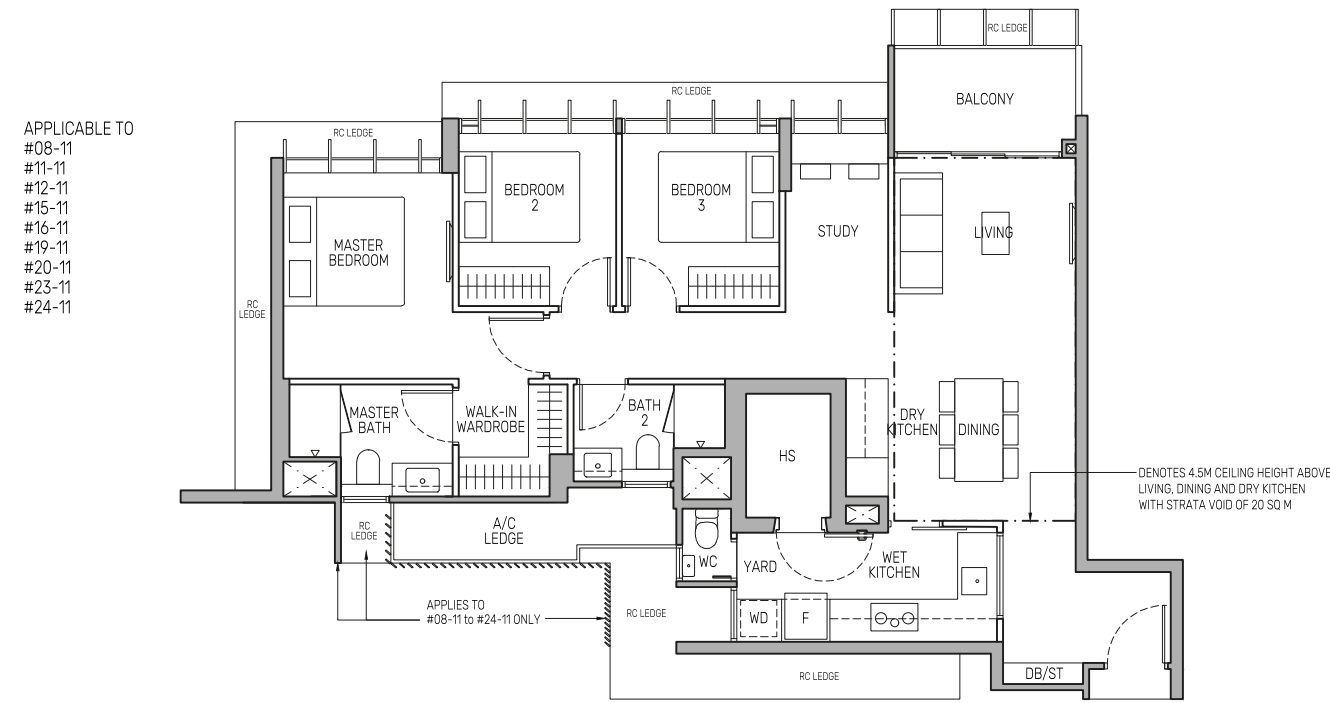
Type C4PS  
108 sq m / 1163 sq ft

BLK 802 : #02-11 to #23-11

# Type C4PS(d)

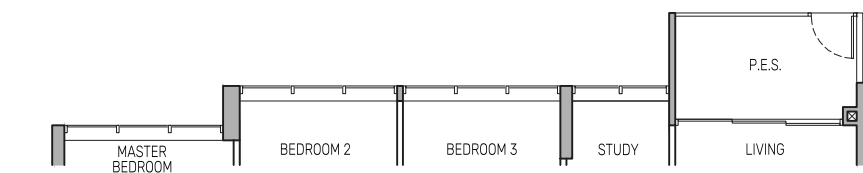
128 sq m / 1378 sq ft  
(includes 20 sq m of strata void above living, dining and dry kitchen with 4.5m ceiling height)

BLK 802 : #24-11



# Type C4PS(p)

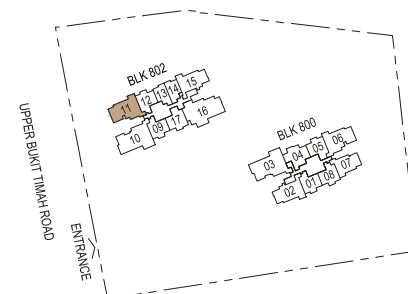
108 sq m / 1163 sq ft  
BLK 802 : #01-11



■ Wall not allowed to be hacked or altered  
• Mirror Image  
P.E.S. - Private Enclosed Space  
WC - Water Closet  
HS - Household Shelter  
DB/ST - Distribution Board/Storage  
RC - Reinforced Concrete  
F - Fridge  
A/C - Air-Conditioner

0 0.5 1 2 3 5M

Area includes air-conditioner (A/C) ledge, balcony and strata void area where applicable, and excludes among others, the RC - Reinforced Concrete Ledge. The demarcated strata void area is measured mid-wall to mid-wall. The plans are subject to change as may be approved by relevant authorities. All floor plans are approximate measurements only and are subject to final survey. The balcony shall not be enclosed unless with the approved balcony screen, more particularly illustrated under the header "Approved Balcony Screen".



Keyplan is not drawn to scale

# 3-BEDROOM PREMIUM + STUDY

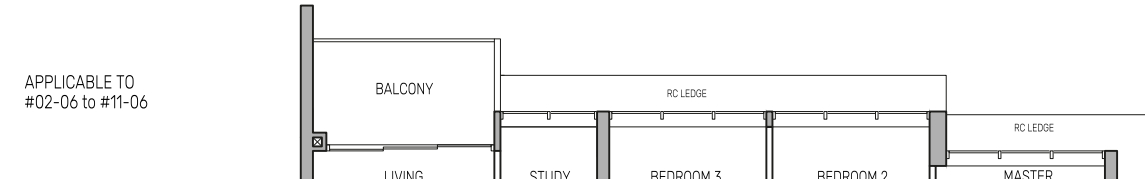
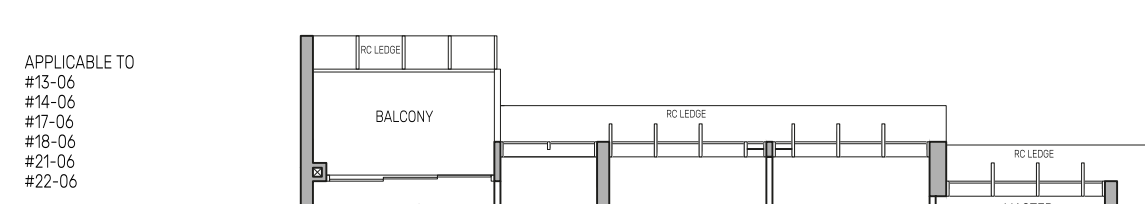
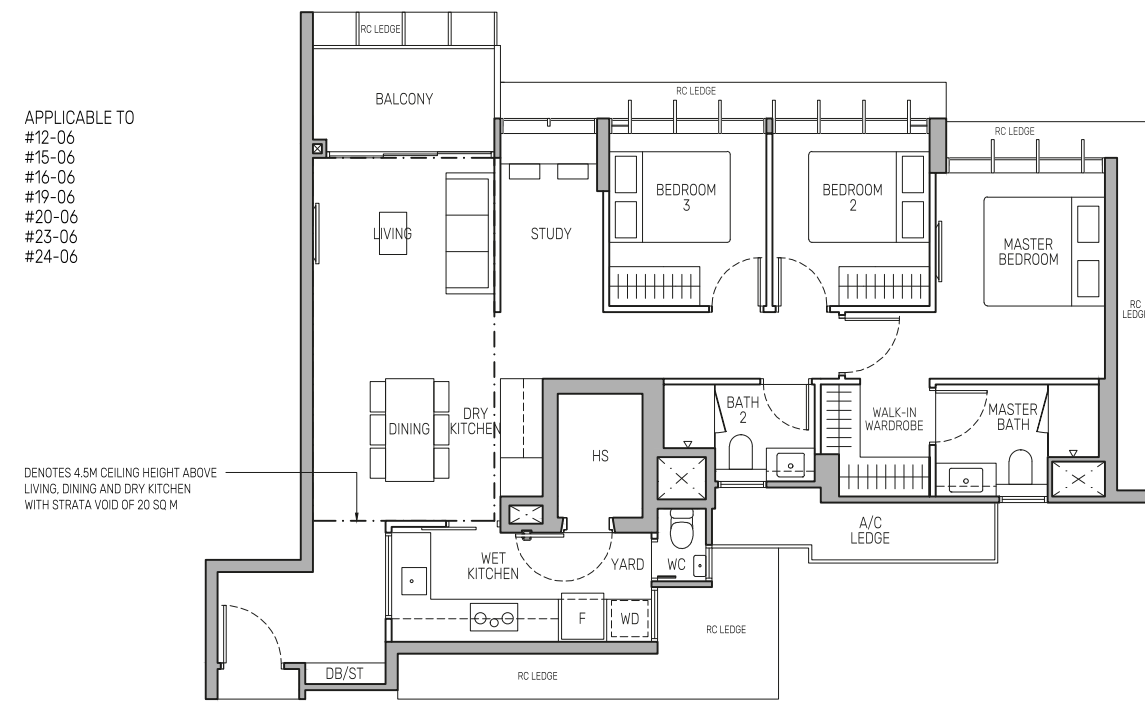
Type C4PSa  
108 sq m / 1163 sq ft

BLK 800 : #02-06 to #23-06

# Type C4PSa(d)

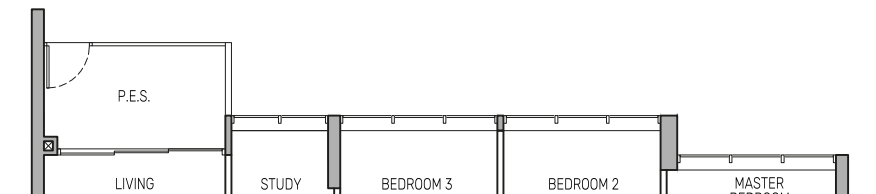
128 sq m / 1378 sq ft  
(includes 20 sq m of strata void above living, dining and dry kitchen with 4.5m ceiling height)

BLK 800 : #24-06



# Type C4PSa(p)

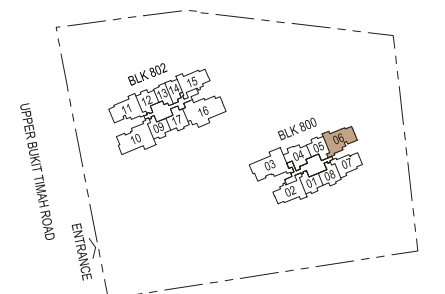
108 sq m / 1163 sq ft  
BLK 800 : #01-06



■ Wall not allowed to be hacked or altered  
• Mirror Image  
P.E.S. - Private Enclosed Space  
WC - Water Closet  
HS - Household Shelter  
DB/ST - Distribution Board/Storage  
RC - Reinforced Concrete  
F - Fridge  
A/C - Air-Conditioner

0 0.5 1 2 3 5M

Area includes air-conditioner (A/C) ledge, balcony and strata void area where applicable, and excludes among others, the RC - Reinforced Concrete Ledge. The demarcated strata void area is measured mid-wall to mid-wall. The plans are subject to change as may be approved by relevant authorities. All floor plans are approximate measurements only and are subject to final survey. The balcony shall not be enclosed unless with the approved balcony screen, more particularly illustrated under the header "Approved Balcony Screen".



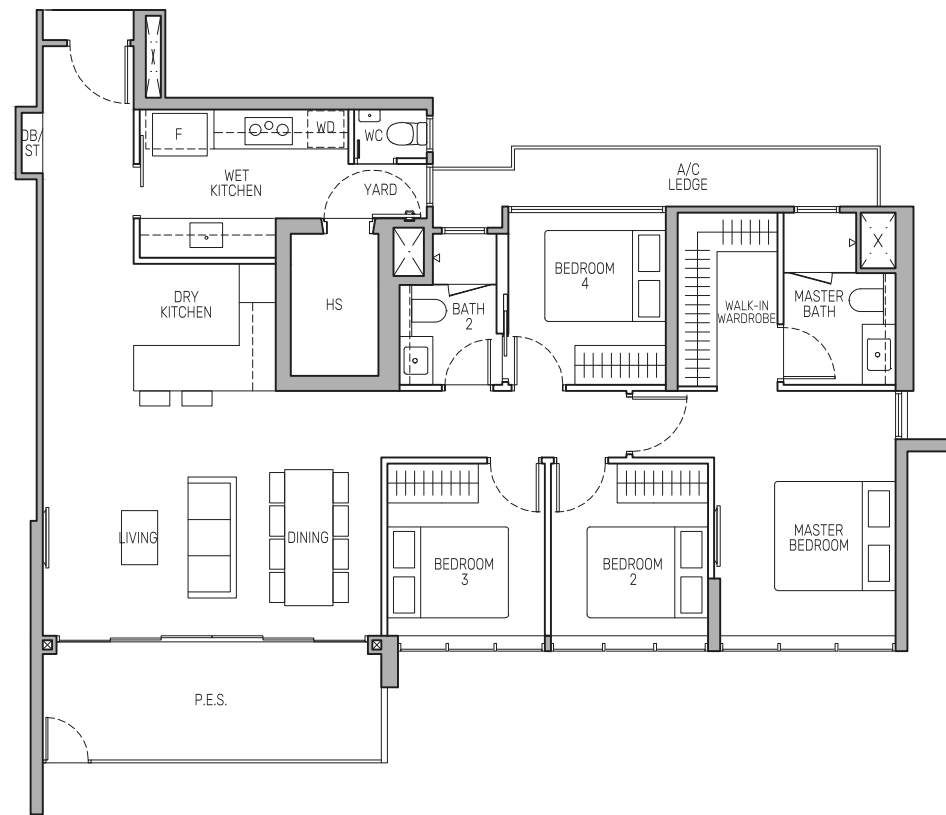
Keyplan is not drawn to scale

# 4-BEDROOM

## Type D1(p)

135 sq m / 1453 sq ft

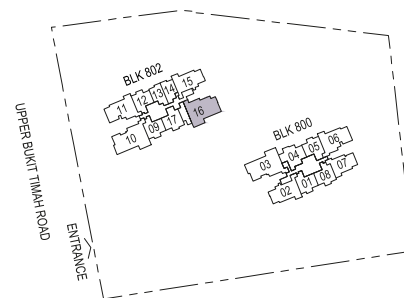
BLK 802 : #01-16



Wall not allowed to be hacked or altered  
 Mirror Image  
 P.E.S. - Private Enclosed Space  
 WD - Washer Cum Dryer  
 WC - Water Closet  
 HS - Household Shelter  
 DB/ST - Distribution Board/Storage  
 RC - Reinforced Concrete  
 F - Fridge  
 A/C - Air-Conditioner

0 0.5 1 2 3 5M

Area includes air-conditioner (A/C) ledge, balcony and strata void area where applicable, and excludes among others, the RC - Reinforced Concrete Ledge. The demarcated strata void area is measured mid-wall to mid-wall. The plans are subject to change as may be approved by relevant authorities. All floor plans are approximate measurements only and are subject to final survey. The balcony shall not be enclosed unless with the approved balcony screen, more particularly illustrated under the header "Approved Balcony Screen".



Keyplan is not drawn to scale

# 4-BEDROOM

## Type D2(d)

172 sq m / 1851 sq ft

(includes 31 sq m of strata void above living, dining and dry kitchen with 4.5m ceiling height)

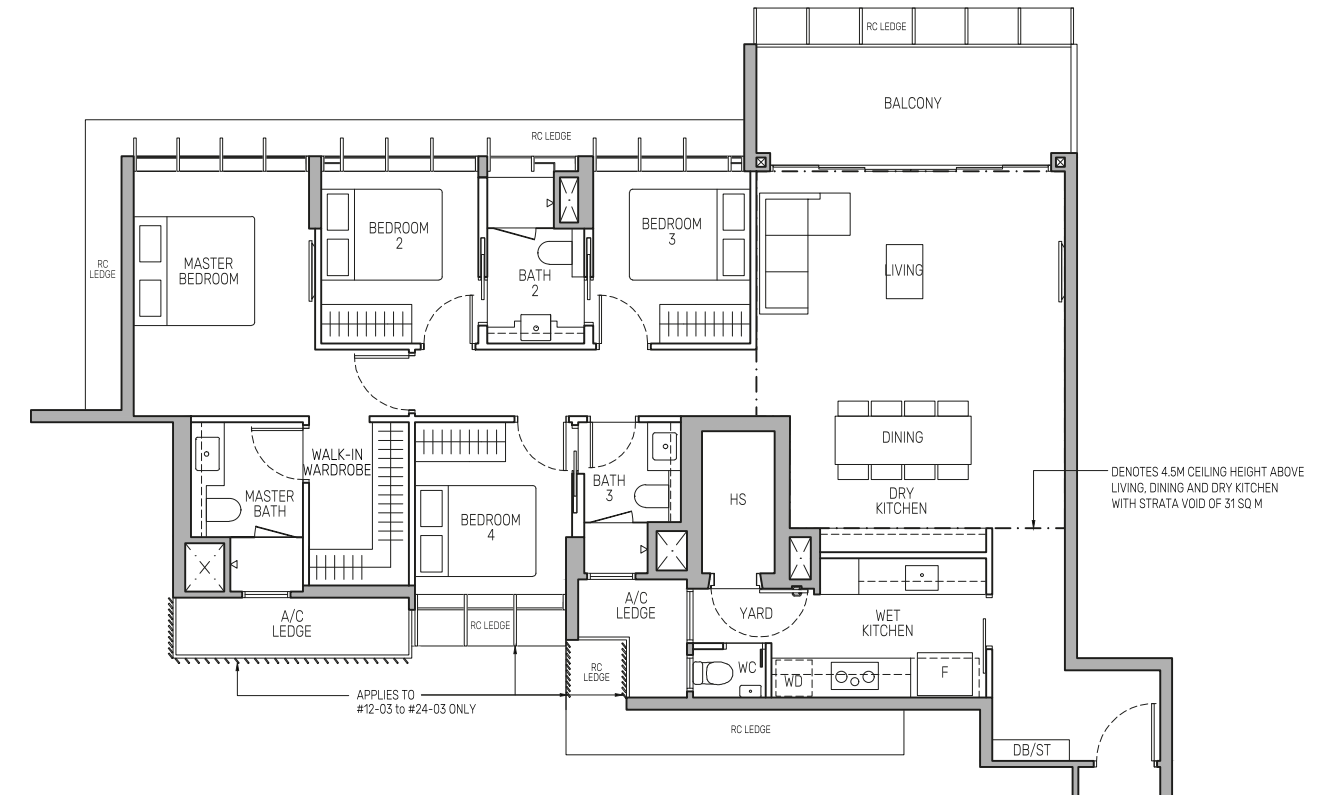
BLK 800 : #24-03

## Type D2

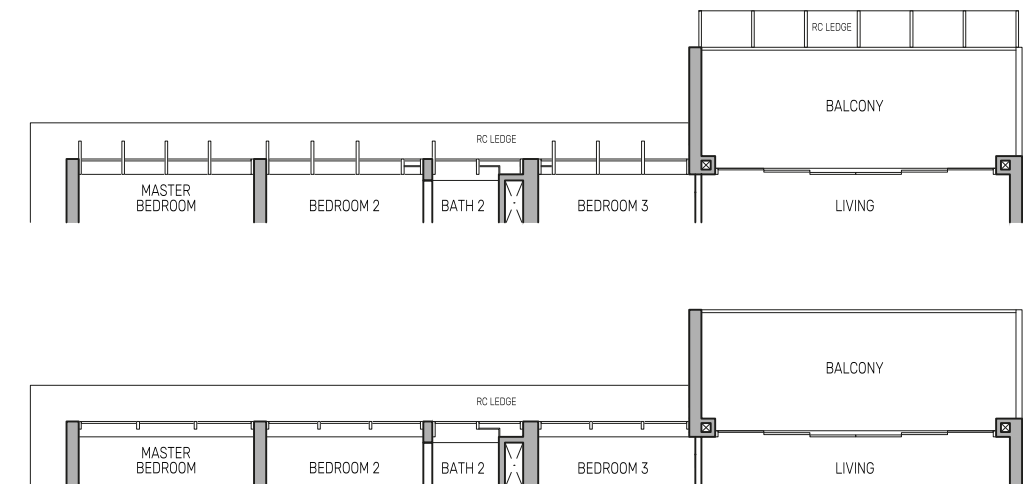
141 sq m / 1518 sq ft

BLK 800 : #02-03 to #23-03

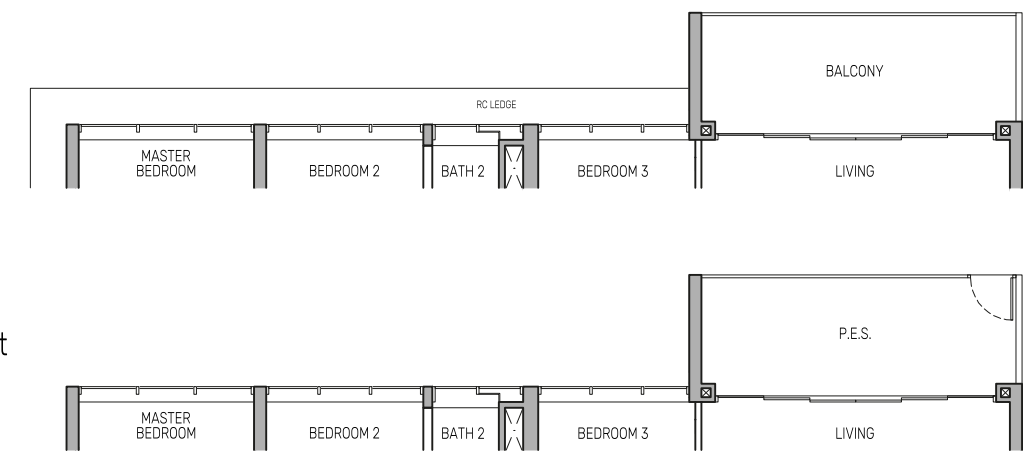
APPLICABLE TO  
 #12-03  
 #15-03  
 #16-03  
 #19-03  
 #20-03  
 #23-03  
 #24-03



APPLICABLE TO  
 #13-03  
 #14-03  
 #17-03  
 #18-03  
 #21-03  
 #22-03



APPLICABLE TO  
 #02-03 to #11-03



## Type D2(p)

141 sq m / 1518 sq ft

BLK 800 : #01-03

Wall not allowed to be hacked or altered  
 Mirror Image  
 P.E.S. - Private Enclosed Space  
 WD - Washer Cum Dryer  
 WC - Water Closet  
 HS - Household Shelter  
 DB/ST - Distribution Board/Storage  
 RC - Reinforced Concrete  
 F - Fridge  
 A/C - Air-Conditioner

0 0.5 1 2 3 5M

Area includes air-conditioner (A/C) ledge, balcony and strata void area where applicable, and excludes among others, the RC - Reinforced Concrete Ledge. The demarcated strata void area is measured mid-wall to mid-wall. The plans are subject to change as may be approved by relevant authorities. All floor plans are approximate measurements only and are subject to final survey. The balcony shall not be enclosed unless with the approved balcony screen, more particularly illustrated under the header "Approved Balcony Screen".



Keyplan is not drawn to scale

# 4-BEDROOM

## Type D2

141 sq m / 1518 sq ft

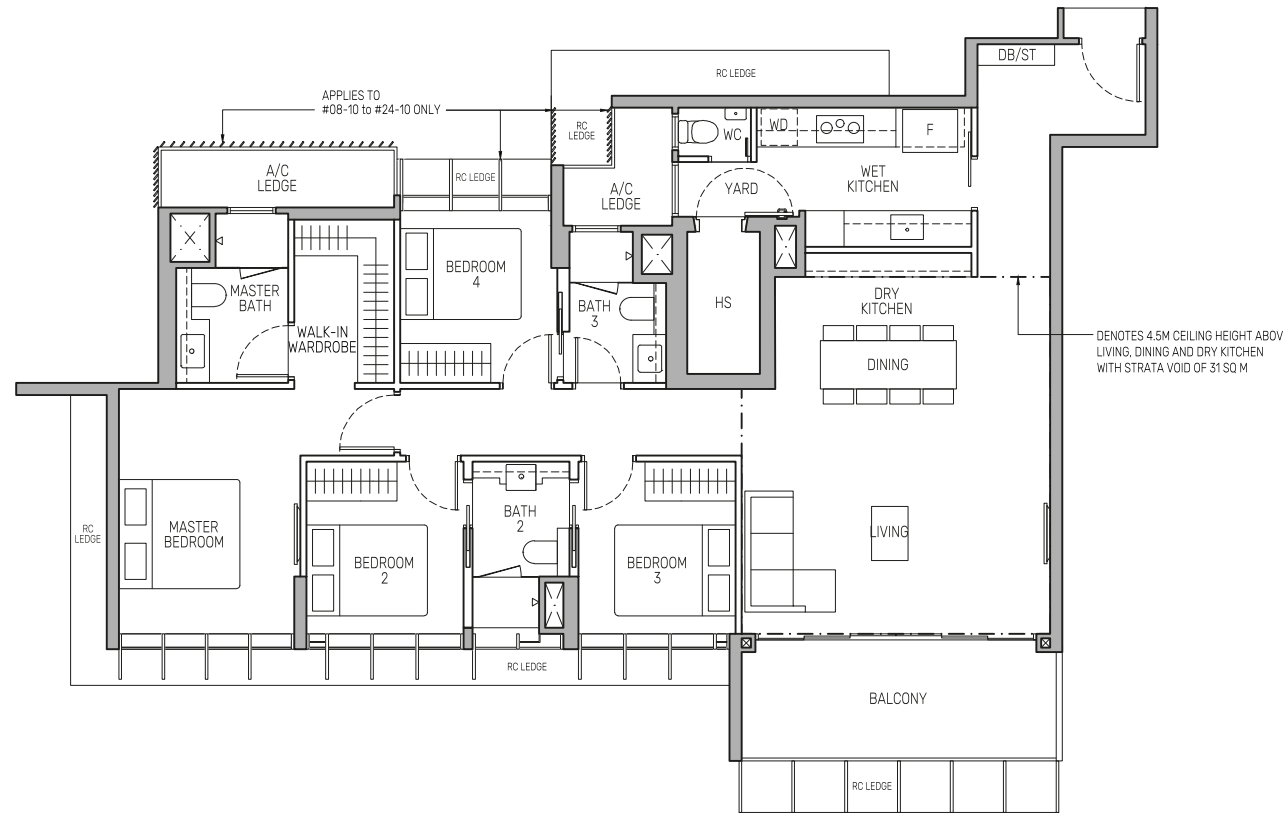
BLK 802 : #02-10 to #23-10

## Type D2(d)

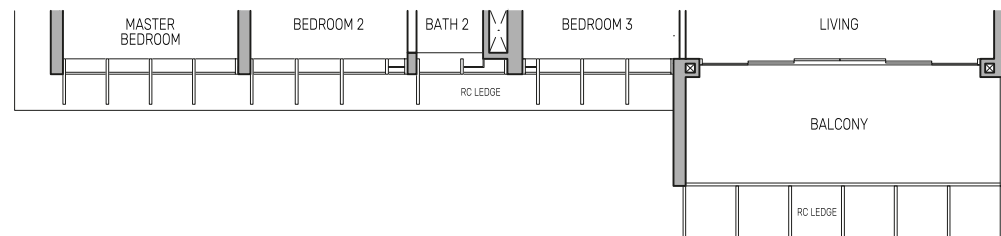
172 sq m / 1851 sq ft  
(includes 31 sq m of strata void above living, dining and dry kitchen with 4.5m ceiling height)

BLK 802 : #24-10

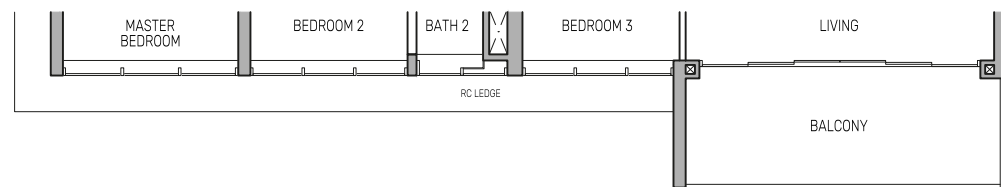
APPLICABLE TO  
#08-10  
#11-10  
#12-10  
#15-10  
#16-10  
#19-10  
#20-10  
#23-10  
#24-10



APPLICABLE TO  
#09-10  
#10-10  
#13-10  
#14-10  
#17-10  
#18-10  
#21-10  
#22-10



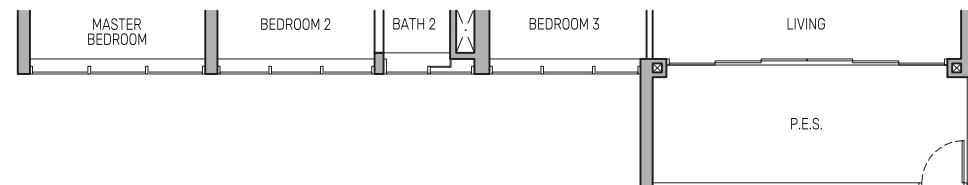
APPLICABLE TO  
#02-10 to #07-10



## Type D2(p)

141 sq m / 1518 sq ft

BLK 802 : #01-10



■ Wall not allowed to be hacked or altered  
• Mirror Image  
P.E.S. - Private Enclosed Space  
WC - Water Closet  
HS - Household Shelter  
DB/ST - Distribution Board/Storage  
RC - Reinforced Concrete  
F - Fridge  
A/C - Air-Conditioner

0 0.5 1 2 3 5M

Area includes air-conditioner (A/C) ledge, balcony and strata void area where applicable, and excludes among others, the RC - Reinforced Concrete Ledge. The demarcated strata void area is measured mid-wall to mid-wall. The plans are subject to change as may be approved by relevant authorities. All floor plans are approximate measurements only and are subject to final survey. The balcony shall not be enclosed unless with the approved balcony screen, more particularly illustrated under the header "Approved Balcony Screen".

Keyplan is not drawn to scale

# 5-BEDROOM

## Type E1(d)

189 sq m / 2034 sq ft  
(includes 32 sq m of strata void above living, dining and dry kitchen with 4.5m ceiling height)

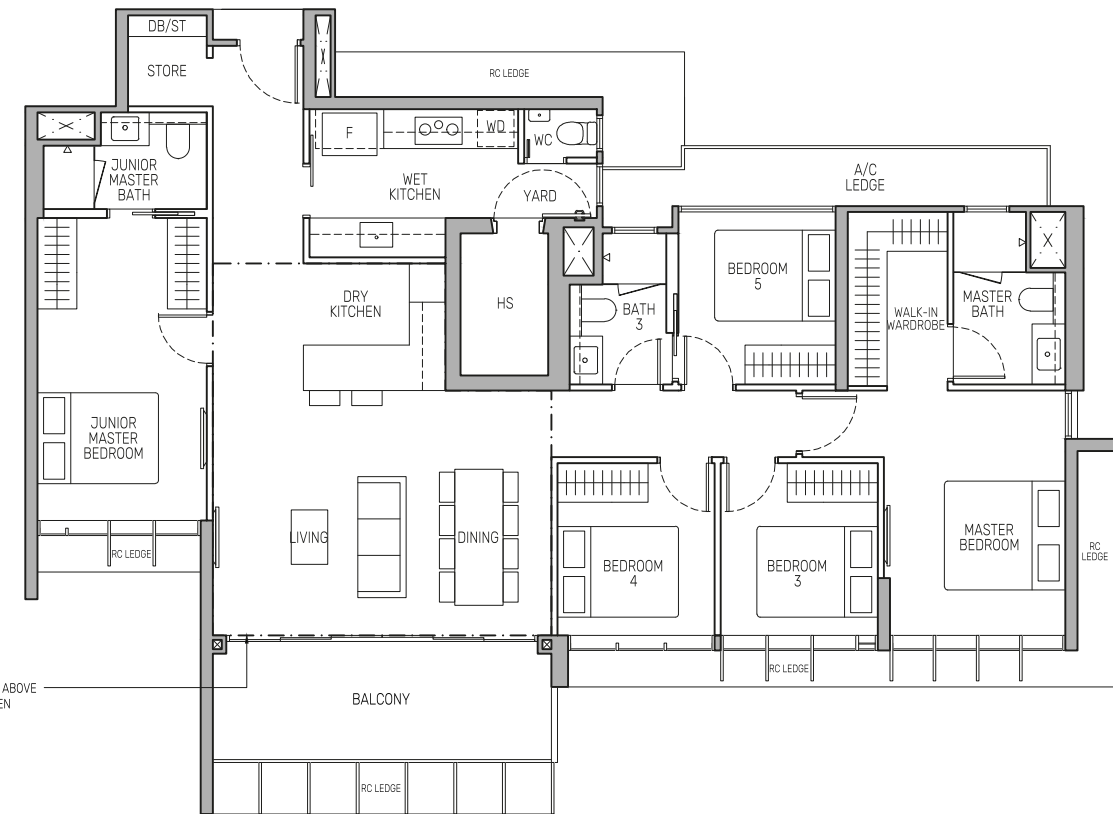
BLK 802 : #24-16

## Type E1

157 sq m / 1690 sq ft

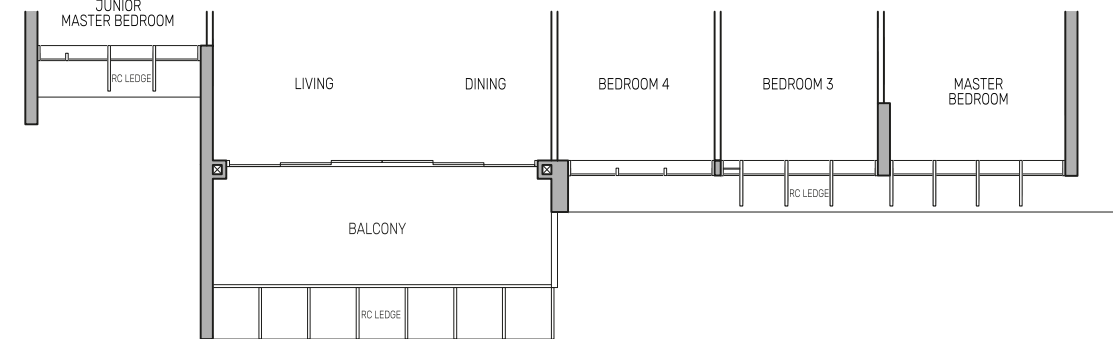
BLK 802 : #02-16 to #23-16

APPLICABLE TO  
#12-16  
#15-16  
#16-16  
#19-16  
#20-16  
#23-16  
#24-16

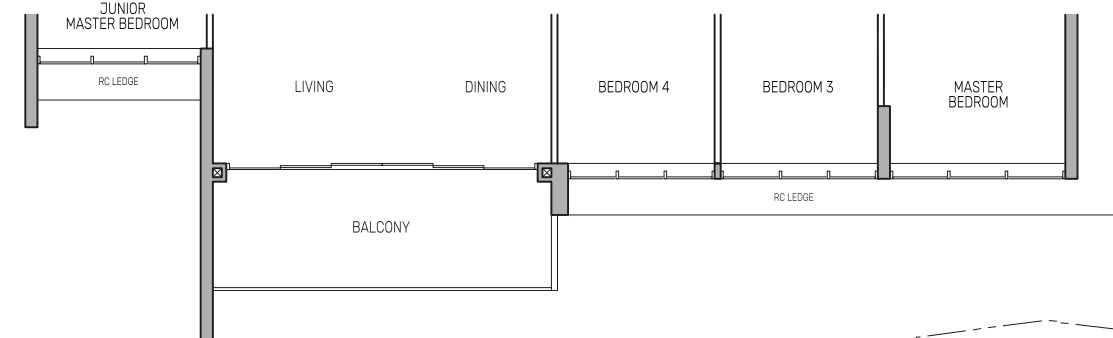


DENOTES 4.5M CEILING HEIGHT ABOVE LIVING, DINING AND DRY KITCHEN WITH STRATA VOID OF 32 SQ M

APPLICABLE TO  
#13-16  
#14-16  
#17-16  
#18-16  
#21-16  
#22-16



APPLICABLE TO  
#02-16 to #11-16



■ Wall not allowed to be hacked or altered  
• Mirror Image  
P.E.S. - Private Enclosed Space  
WC - Water Closet  
HS - Household Shelter  
DB/ST - Distribution Board/Storage  
RC - Reinforced Concrete  
F - Fridge  
A/C - Air-Conditioner

0 0.5 1 2 3 5M

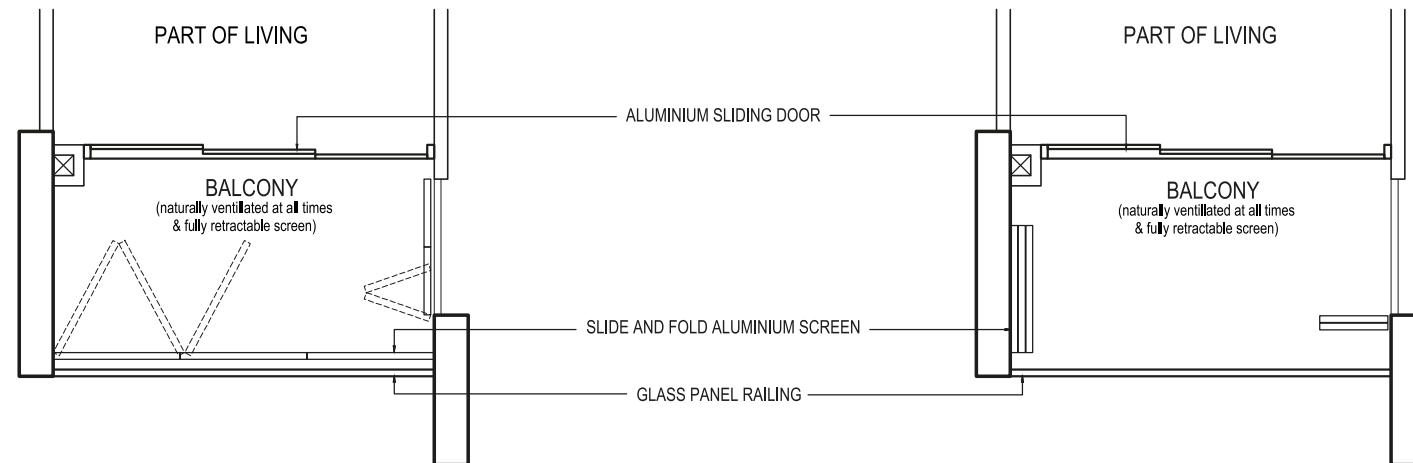
Area includes air-conditioner (A/C) ledge, balcony and strata void area where applicable, and excludes among others, the RC - Reinforced Concrete Ledge. The demarcated strata void area is measured mid-wall to mid-wall. The plans are subject to change as may be approved by relevant authorities. All floor plans are approximate measurements only and are subject to final survey. The balcony shall not be enclosed unless with the approved balcony screen, more particularly illustrated under the header "Approved Balcony Screen".

Keyplan is not drawn to scale



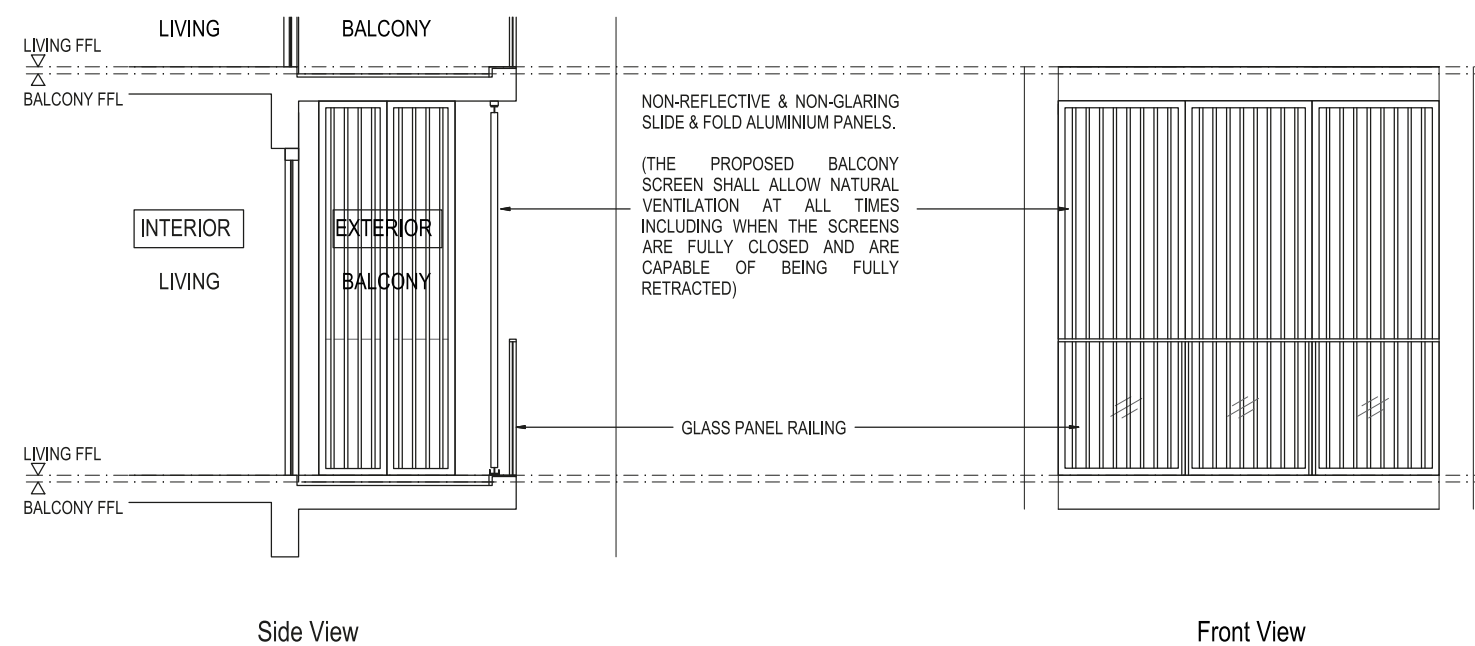
# APPROVED BALCONY SCREEN

## TYPICAL UNITS



Typical Retractable Balcony Screen  
(Fully Closed) - Plan

Typical Retractable Balcony Screen  
(Fully Retracted) - Plan



Side View

Front View



Singapore's Trusted Property Pioneer Since 1963

City Developments Limited (CDL) is a leading global real estate company with a network spanning 143 locations in 28 countries and regions. Listed on the Singapore Exchange, the Group is one of the largest companies by market capitalisation. Its income-stable and geographically diverse portfolio comprises residences, offices, hotels, serviced apartments, student accommodation, retail malls and integrated developments.

With a proven track record of 60 years in real estate development, investment and management, CDL has developed over 50,000 homes and owns around 21 million square feet of gross floor area in residential for lease, commercial and hospitality assets globally.

**Note:**  
The balcony shall not be enclosed unless with the Approved Balcony Screen as shown above.  
The cost of Approved Balcony Screen and installation shall be borne by the Purchaser.  
Where required to facilitate installation, the Architect reserves the right to determine appropriate details not limited to fixing details and colour tones.

