

1ST STOREY PLAN

RESTAURANTS

UNIT NO.	AREA (sqm)
#01-02	71
#01-03	74
#01-04	66
#01-05	74
#01-06	69
#01-07	66
#01-08	70
#01-09	66
#01-12	63
#01-13	64
#01-14	73
#01-15	68
#01-17	67
#01-18	64
#01-19	68

SHOPS

UNIT NO.	AREA (sqm)
#01-01	47
#01-10	27
#01-11	27
#01-16	42
#01-20	29
#01-21	33
#01-22	35
#01-23	34
#01-24	41
#01-25	40
#01-26	40
#01-27	39
#01-28	34



Note:
 Unit area include accessory air-con ledges. Air-con ledges are suspended at high level at 1st storey.
 All plans are subject to amendments as approved by the relevant authorities.



DIAGRAMMATIC CHART

Blk 1	01	02	03	04	05	06	07	08	09	10
Attic	C1b(L)-PH 3 bdrm #04-01	D2b-PH 4 bdrm #04-02	D1(L)-PH 4 bdrm #04-03	B1(L)-PH 2 bdrm #04-04	B2(R)-PH 2 bdrm #04-05	C4(R)-PH 3 bdrm #04-06	D3-PH 4 bdrm #04-07	C5-PH 3 bdrm #04-08	C2(L)-PH 3 bdrm #04-09	C1a(R)-PH 3 bdrm #04-10
4th										
3rd	B1(L) 2 bdrm #03-01	C2b 3 bdrm #03-02	C1(L) 3 bdrm #03-03	A3(L) 1+1 bdrm #03-04	A4b 1+1 bdrm #03-05	B4(R) 2 bdrm #03-06	C3 3 bdrm #03-07	B8 2 bdrm #03-08	B2(L) 2 bdrm #03-09	B1(R) 2 bdrm #03-10
2nd	B1(L)-T 2 bdrm #02-01	C2b-T 3 bdrm #02-02	C1(L)-T 3 bdrm #02-03	A3(L)-T 1+1 bdrm #02-04	A4b-T 1+1 bdrm #02-05	B4(R)-T 2 bdrm #02-06	C3-T 3 bdrm #02-07	B8 2 bdrm #02-08	B2(L)-T 2 bdrm #02-09	B1(R)-T 2 bdrm #02-10

Blk 3	11	12	13	14	15	16	17	18	19	20
Attic	C1a(L)-PH 3 bdrm #04-11	C2(R)-PH 3 bdrm #04-12	B4-PH 2 bdrm #04-13	B3-PH 2 bdrm #04-14	C3-PH 3 bdrm #04-15	B2(L)-PH 2 bdrm #04-16	B1(R)-PH 2 bdrm #04-17	D1(R)-PH 4 bdrm #04-18	D2a-PH 4 bdrm #04-19	C1b(R)-PH 3 bdrm #04-20
4th										
3rd	B1(L) 2 bdrm #03-11	B2(R) 2 bdrm #03-12	A1 1 bdrm #03-13	B7 2 bdrm #03-14	B3 2 bdrm #03-15	A4a 1+1 bdrm #03-16	A3(R) 1+1 bdrm #03-17	C1(R) 3 bdrm #03-18	C2a 3 bdrm #03-19	B1(R) 2 bdrm #03-20
2nd	B1(L)-T 2 bdrm #02-11	B2(R)-T 2 bdrm #02-12	A1 1 bdrm #02-13	B7-T 2 bdrm #02-14	B3-T 2 bdrm #02-15	A4a-T 1+1 bdrm #02-16	A3(R)-T 1+1 bdrm #02-17	C1(R)-T 3 bdrm #02-18	C2a-T 3 bdrm #02-19	B1(R)-T 2 bdrm #02-20

Blk 5	21	22	23	24	25	26	27	28	29	30
Attic	B5-PH 2 bdrm #04-21	C4(L)-PH 3 bdrm #04-22	C4(R)-PH 3 bdrm #04-23	C6c-PH 3 bdrm #04-24	D2c-PH 4 bdrm #04-25	C8-PH 3 bdrm #04-26	C6b-PH 3 bdrm #04-27	C6a-PH 3 bdrm #04-28	C4(L)-PH 3 bdrm #04-29	C7-PH 3 bdrm #04-30
4th										
3rd	A2 1 bdrm #03-21	B4(L) 2 bdrm #03-22	B4(R) 2 bdrm #03-23	C4c 3 bdrm #03-24	C2c 3 bdrm #03-25	B6 2 bdrm #03-26	C4b 3 bdrm #03-27	C4a 3 bdrm #03-28	B4(L) 2 bdrm #03-29	B5 2 bdrm #03-30
2nd	A2-T 1 bdrm #02-21	B4(L)-T 2 bdrm #02-22	B4(R)-T 2 bdrm #02-23	C4c-T 3 bdrm #02-24	C2c-T 3 bdrm #02-25	B6-T 2 bdrm #02-26	C4b-T 3 bdrm #02-27	C4a-T 3 bdrm #02-28	B4(L)-T 2 bdrm #02-29	B5-T 2 bdrm #02-30

1 bdrm
 1+1 bdrm
 2 bdrm
 3 bdrm
 4 bdrm



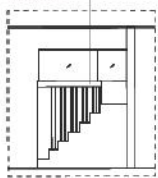
www.hattori.com

TYPE A2-T

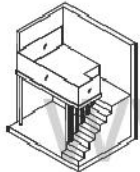
1 bdrm
50 sqm

#02-21

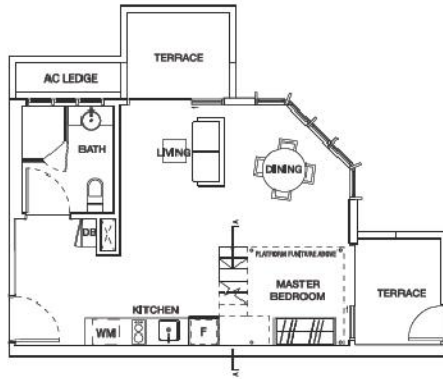
PLATFORM
FURNITURE



SECTION A-A



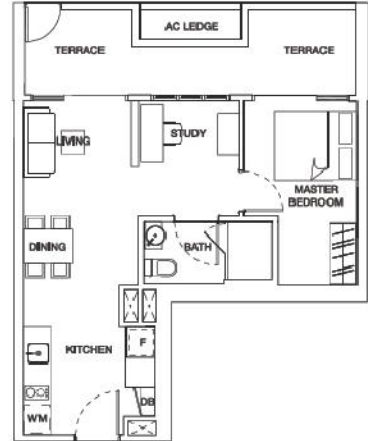
ISOMETRIC VIEW



TYPE A3(L)-T

1 + 1 bdrm
55 sqm

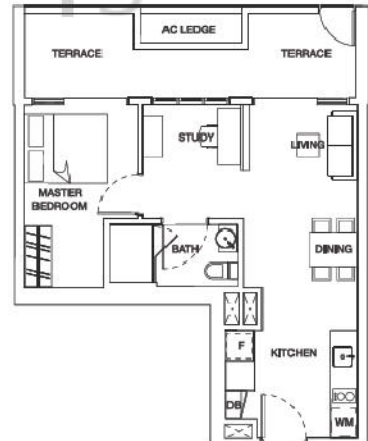
#02-04



TYPE A3(R)-T

1 + 1 bdrm
55 sqm

#02-17



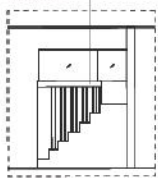
Note: Unit area includes a/c ledge & / or terrace where applicable.
All plans are subject to amendments as approved by the relevant authorities.

TYPE A2-T

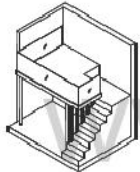
1 bdrm
50 sqm

#02-21

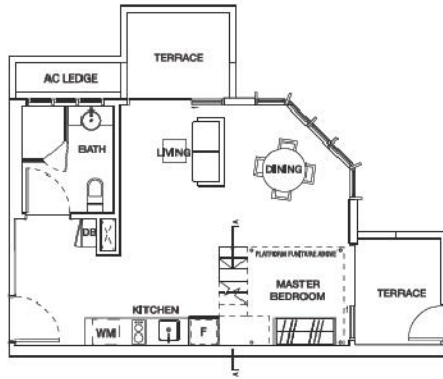
PLATFORM
FURNITURE



SECTION A-A



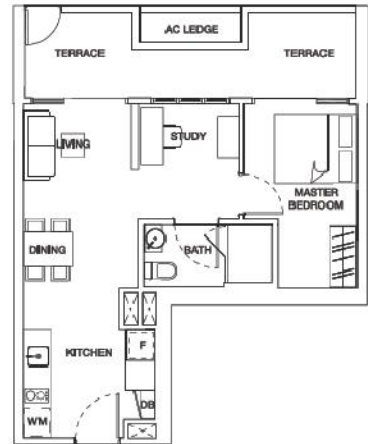
ISOMETRIC VIEW



TYPE A3(L)-T

1 + 1 bdrm
55 sqm

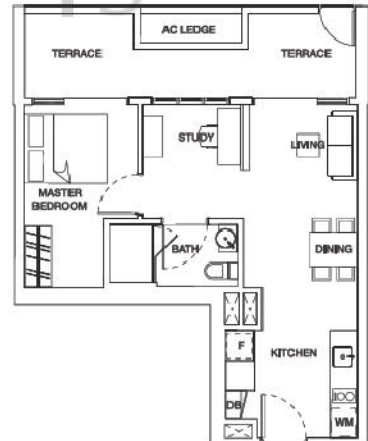
#02-04



TYPE A3(R)-T

1 + 1 bdrm
55 sqm

#02-17

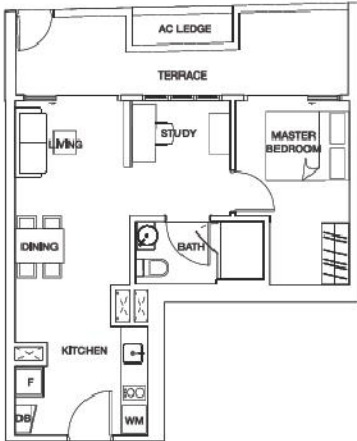


Note: Unit area includes a/c ledge & / or terrace where applicable.
All plans are subject to amendments as approved by the relevant authorities.

TYPE A4a-T

1 + 1 bdrm
55 sqm

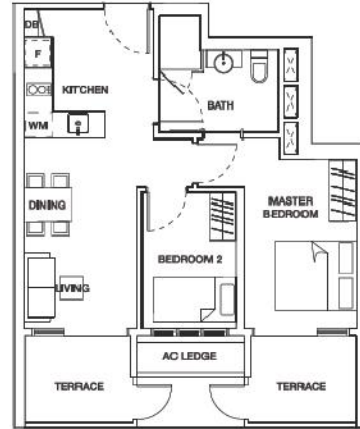
#02-16



TYPE B1(L)-T

2 bdrm
61 sqm

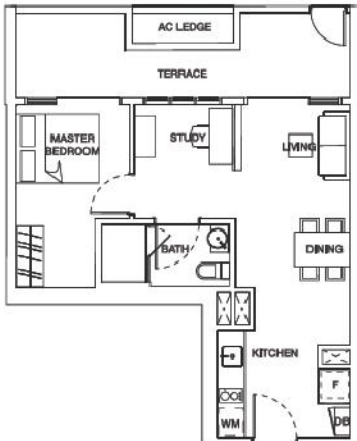
#02-01
#02-11



TYPE A4b-T

1 + 1 bdrm
55 sqm

#02-05



www.huttonsgroup.sg.com

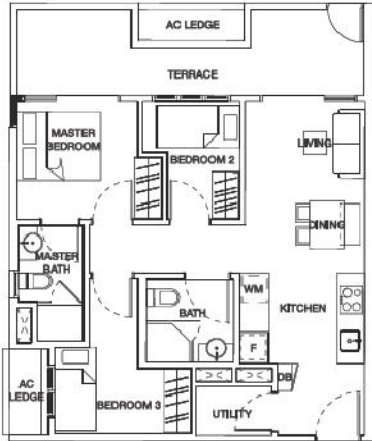


Note: Unit area includes a/c ledge & / or terrace where applicable.
All plans are subject to amendments as approved by the relevant authorities.

TYPE C1(L)-T

3 bdrm
72 sqm

#02-03



TYPE C2a-T

3 bdrm
70 sqm

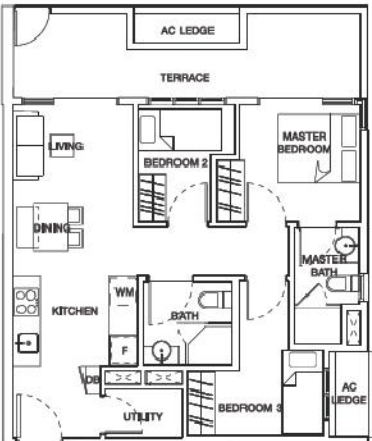
#02-19



TYPE C1(R)-T

3 bdrm
72 sqm

#02-18



www.huttonsgroup.sg.com



KEY PLAN (NOT TO SCALE)
Note: Unit area includes a/c ledge & / or terrace where applicable.
All plans are subject to amendments as approved by the relevant authorities.

TYPE C2b

3 bdrm
64 sqm

#03-02



TYPE C3

3 bdrm
70 sqm

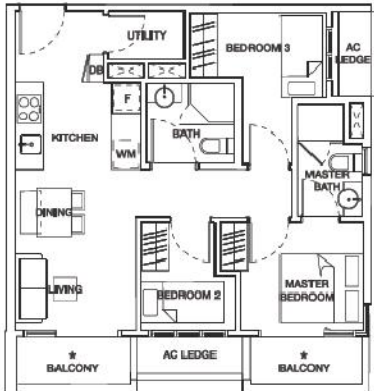
#03-07



TYPE C2c

3 bdrm
62 sqm

#03-25



www.huttonsgroup.sg.com



Note: Unit area includes a/c ledge & / or balcony* where applicable. All plans are subject to amendments as approved by the relevant authorities.
* The balcony shall not be enclosed. Only approved balcony screens are to be used. For an illustration of the approved balcony screen, please refer to page 48 of this brochure.

TYPE C4a

3 bdrm
68 sqm

#03-28



TYPE C4b

3 bdrm
62 sqm

#03-27

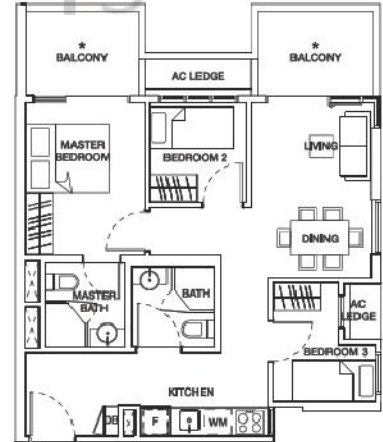


www.huttonsindip.com

TYPE C4c

3 bdrm
67 sqm

#03-24



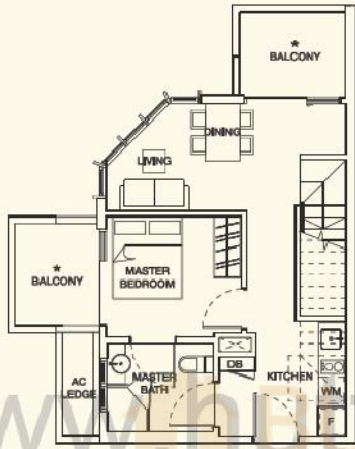
Note: Unit area includes a/c ledge & / or balcony* where applicable. All plans are subject to amendments as approved by the relevant authorities.
* The balcony shall not be enclosed. Only approved balcony screens are to be used. For an illustration of the approved balcony screen, please refer to page 48 of this brochure.

PENTHOUSE

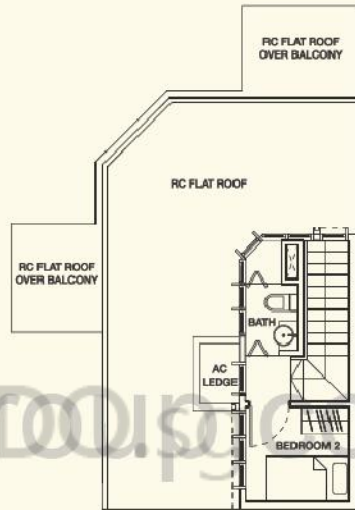
TYPE B5-PH

2 bdrm
65 sqm

#04-21



LOWER LEVEL



UPPER LEVEL

www.hartonoengineering.com



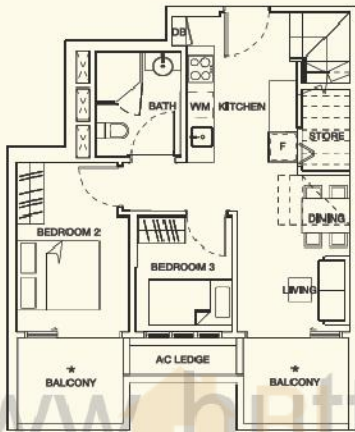
Note: Unit area includes a/c ledge & / or balcony* & / or roof terrace & / or strata void where applicable. All plans are subject to amendments as approved by the relevant authorities.
* The balcony shall not be enclosed. Only approved balcony screens are to be used. For an illustration of the approved balcony screen, please refer to page 48 of this brochure.

PENTHOUSE

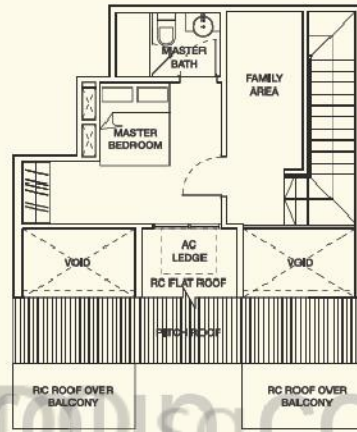
TYPE C1a(R)-PH

3 bdrm
95 sqm

#04-10

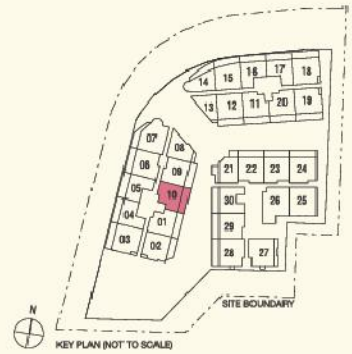


LOWER LEVEL



UPPER LEVEL

www.huttonsgroup.sg.com



KEY PLAN (NOT TO SCALE)

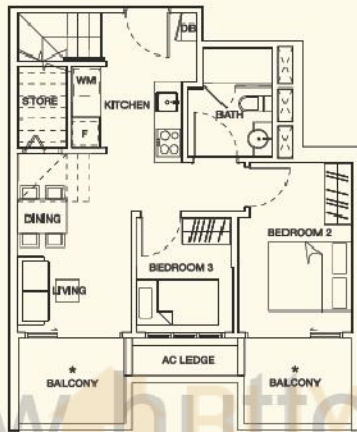
Note: Unit area includes a/c ledge & / or balcony* & / or roof terrace & / or strata void where applicable. All plans are subject to amendments as approved by the relevant authorities.
* The balcony shall not be enclosed. Only approved balcony screens are to be used. For an illustration of the approved balcony screen, please refer to page 48 of this brochure.

PENTHOUSE

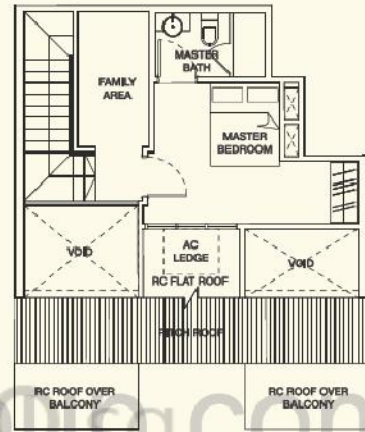
TYPE C1b(L)-PH

3 bdrm
95 sqm

#04-01



LOWER LEVEL



UPPER LEVEL

www.huttonsingid.com



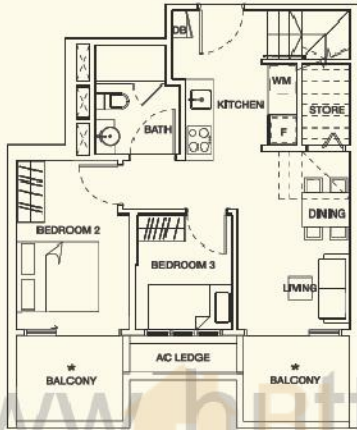
Note: Unit area includes a/c ledge & / or balcony* & / or roof terrace & / or strata void where applicable. All plans are subject to amendments as approved by the relevant authorities.
* The balcony shall not be enclosed. Only approved balcony screens are to be used. For an illustration of the approved balcony screen, please refer to page 48 of this brochure.

PENTHOUSE

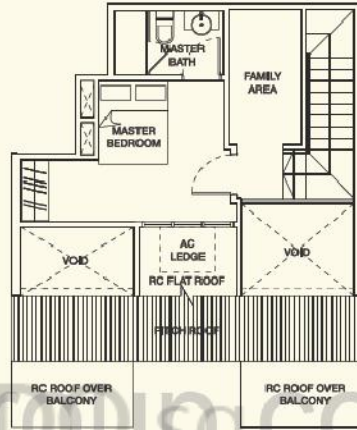
TYPE C1b(R)-PH

3 bdrm
95 sqm

#04-20



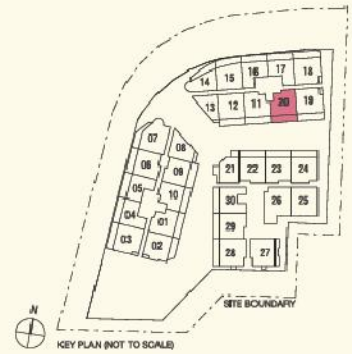
LOWER LEVEL



UPPER LEVEL

www.huttonsgroup.com

Note: Unit area includes a/c ledge & / or balcony* & / or roof terrace & / or strata void where applicable. All plans are subject to amendments as approved by the relevant authorities.
* The balcony shall not be enclosed. Only approved balcony screens are to be used. For an illustration of the approved balcony screen, please refer to page 48 of this brochure.



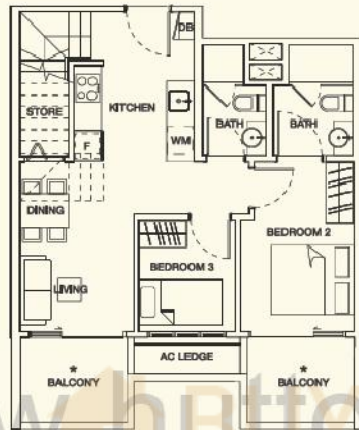
KEY PLAN (NOT TO SCALE)

PENTHOUSE

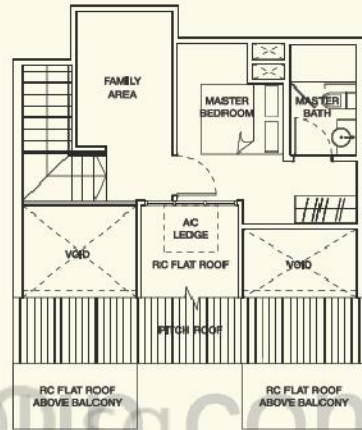
TYPE C2(L)-PH

3 bdrm
99 sqm

#04-09



LOWER LEVEL



UPPER LEVEL

www.huttonsingapore.com

Note: Unit area includes a/c ledge & / or balcony* & / or roof terrace & / or strata void where applicable. All plans are subject to amendments as approved by the relevant authorities.
* The balcony shall not be enclosed. Only approved balcony screens are to be used. For an illustration of the approved balcony screen, please refer to page 48 of this brochure.



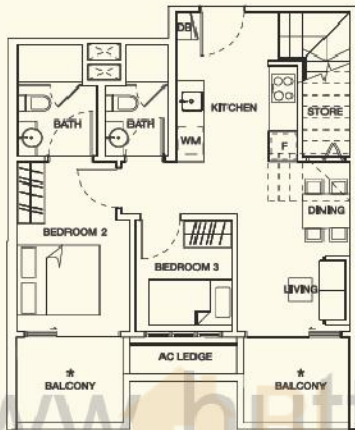
KEY PLAN (NOT TO SCALE)

PENTHOUSE

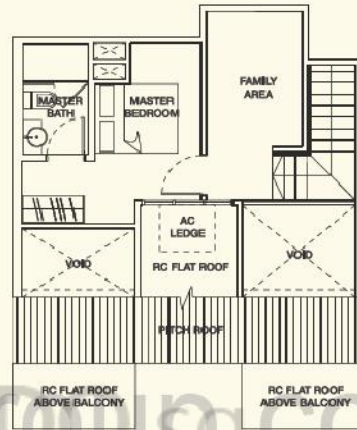
TYPE C2(R)-PH

3 bdrm
99 sqm

#04-12



LOWER LEVEL



UPPER LEVEL

www.huttonsgroup.sg.com



Note: Unit area includes a/c ledge & / or balcony* & / or roof terrace & / or strata void where applicable. All plans are subject to amendments as approved by the relevant authorities.
* The balcony shall not be enclosed. Only approved balcony screens are to be used. For an illustration of the approved balcony screen, please refer to page 48 of this brochure.

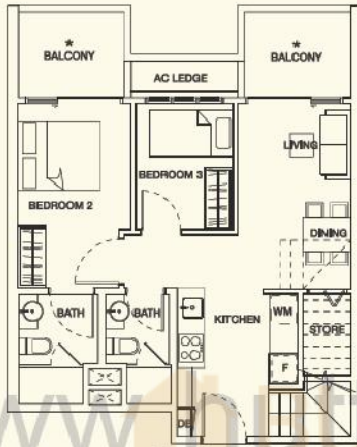
KEY PLAN (NOT TO SCALE)

PENTHOUSE

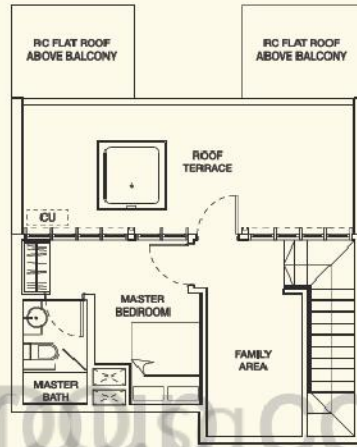
TYPE C4(L)-PH

3 bdrm
115 sqm

#04-22
#04-29



LOWER LEVEL



UPPER LEVEL

www.huttonsingloft.com



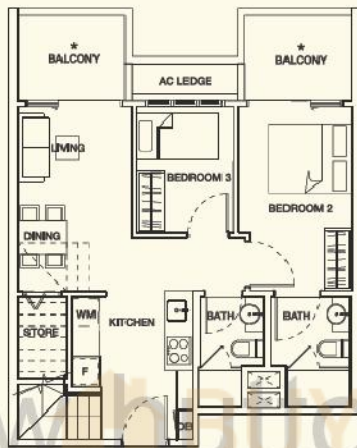
Note: Unit area includes a/c ledge & / or balcony* & / or roof terrace & / or strata void where applicable. All plans are subject to amendments as approved by the relevant authorities.
* The balcony shall not be enclosed. Only approved balcony screens are to be used. For an illustration of the approved balcony screen, please refer to page 48 of this brochure.

PENTHOUSE

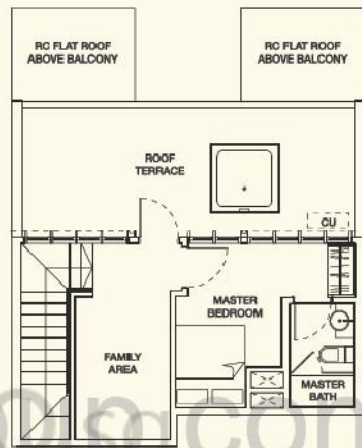
TYPE C4(R)-PH

3 bdrm
115 sqm

#04-06
#04-23



LOWER LEVEL



UPPER LEVEL

www.whatsonsgroup.com



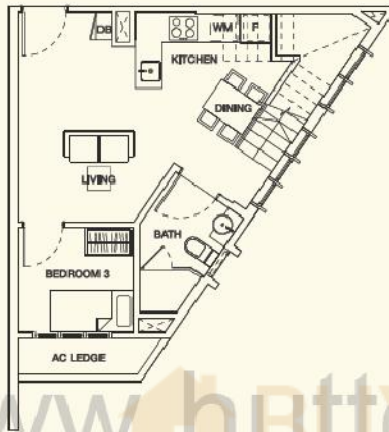
Note: Unit area includes a/c ledge & / or balcony* & / or roof terrace & / or strata void where applicable. All plans are subject to amendments as approved by the relevant authorities.
* The balcony shall not be enclosed. Only approved balcony screens are to be used. For an illustration of the approved balcony screen, please refer to page 48 of this brochure.

PENTHOUSE

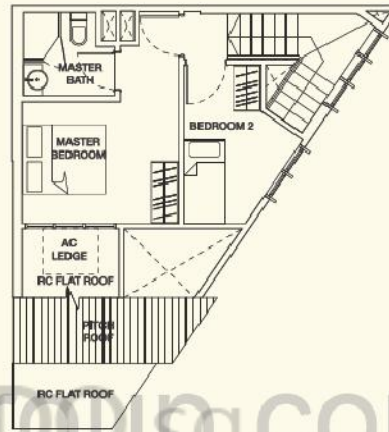
TYPE C5-PH

3 bdrm
74 sqm

#04-08



LOWER LEVEL



UPPER LEVEL

www.huttonsingroup.sg.com

Note: Unit area includes a/c ledge & / or roof terrace & / or strata void where applicable.
All plans are subject to amendments as approved by the relevant authorities.



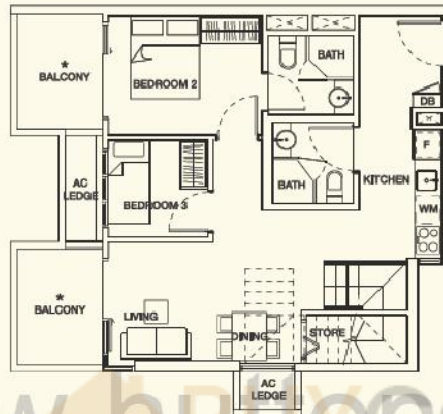
KEY PLAN (NOT TO SCALE)

PENTHOUSE

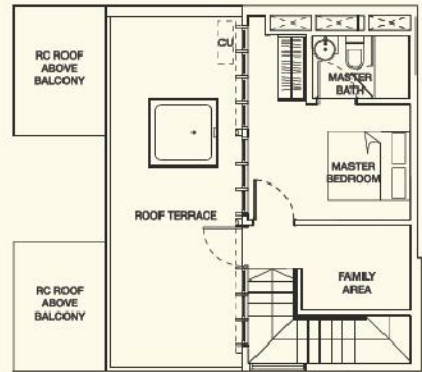
TYPE C6a-PH

3 bdrm
118 sqm

#04-28



LOWER LEVEL



UPPER LEVEL

www.huttonsingroup.sg.com



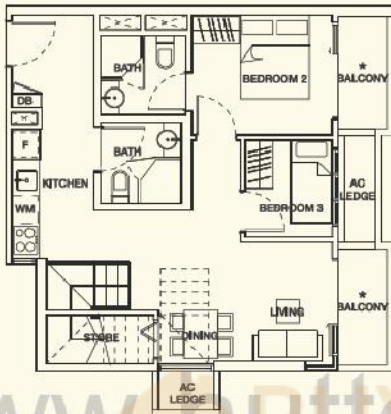
Note: Unit area includes a/c ledge & / or balcony* & / or roof terrace & / or strata void where applicable. All plans are subject to amendments as approved by the relevant authorities.
* The balcony shall not be enclosed. Only approved balcony screens are to be used. For an illustration of the approved balcony screen, please refer to page 48 of this brochure.

PENTHOUSE

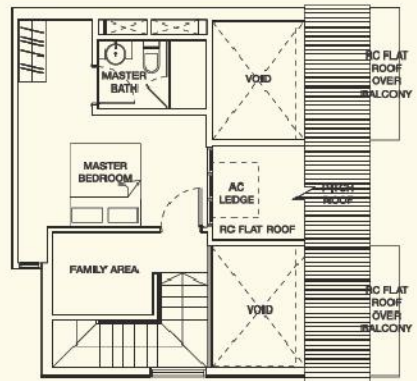
TYPE C6b-PH

3 bdrm
103 sqm

#04-27



LOWER LEVEL



UPPER LEVEL

www.huttonsingroup.com

Note: Unit area includes a/c ledge & / or balcony* & / or roof terrace & / or strata void where applicable. All plans are subject to amendments as approved by the relevant authorities.
* The balcony shall not be enclosed. Only approved balcony screens are to be used. For an illustration of the approved balcony screen, please refer to page 48 of this brochure.



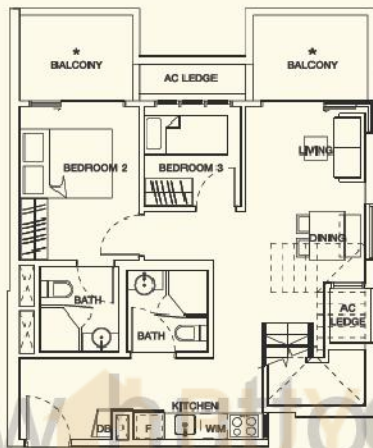
KEY PLAN (NOT TO SCALE)

PENTHOUSE

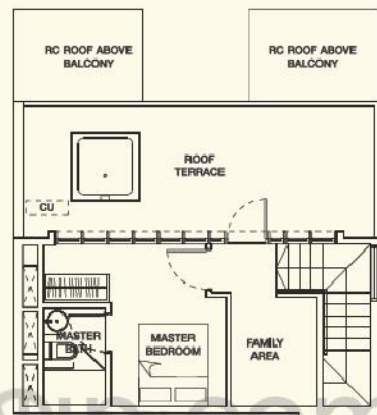
TYPE C6c-PH

3 bdrm
117 sqm

#04-24



LOWER LEVEL



UPPER LEVEL

www.bestcostgroup.com



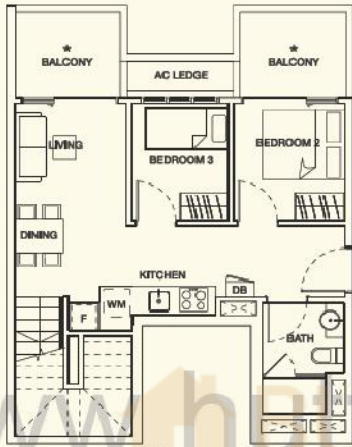
Note: Unit area includes a/c ledge & / or balcony* & / or roof terrace & / or strata void where applicable. All plans are subject to amendments as approved by the relevant authorities.
* The balcony shall not be enclosed. Only approved balcony screens are to be used. For an illustration of the approved balcony screen, please refer to page 48 of this brochure.

PENTHOUSE

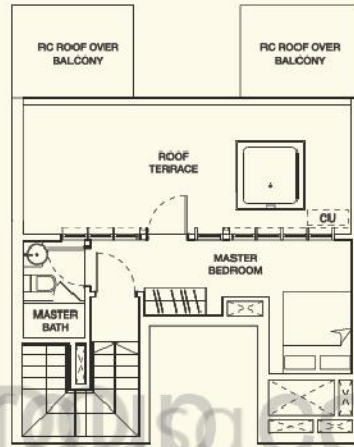
TYPE C7-PH

3 bdrm
102 sqm

#04-30



LOWER LEVEL



UPPER LEVEL

www.hartonoasgroup.com



KEY PLAN (NOT TO SCALE)

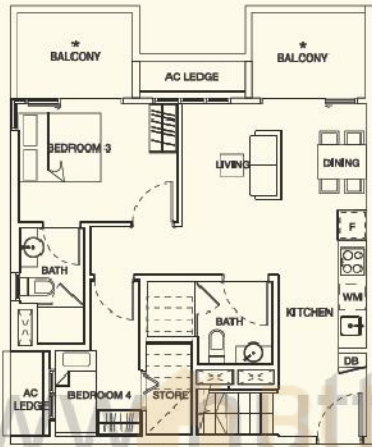
Note: Unit area includes a/c ledge & / or balcony* & / or roof terrace & / or strata void where applicable. All plans are subject to amendments as approved by the relevant authorities.
* The balcony shall not be enclosed. Only approved balcony screens are to be used. For an illustration of the approved balcony screen, please refer to page 48 of this brochure.

PENTHOUSE

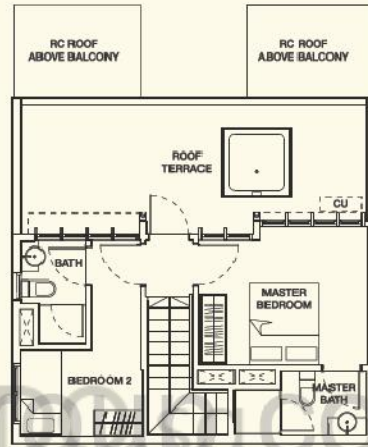
TYPE D1(L)-PH

4 bdrm
125 sqm

#04-03



LOWER LEVEL



UPPER LEVEL

www.mattosgill.com

Note: Unit area includes a/c ledge & / or balcony* & / or roof terrace & / or strata void where applicable. All plans are subject to amendments as approved by the relevant authorities.
* The balcony shall not be enclosed. Only approved balcony screens are to be used. For an illustration of the approved balcony screen, please refer to page 48 of this brochure.



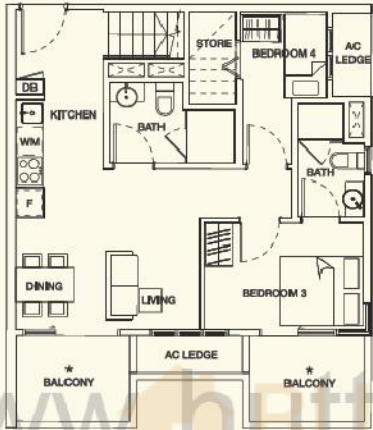
KEY PLAN (NOT TO SCALE)

PENTHOUSE

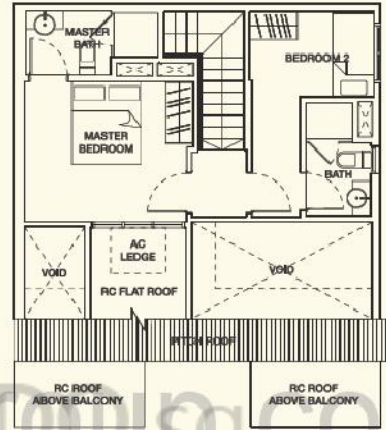
TYPE D2a-PH

4 bdrm
110 sqm

#04-19



LOWER LEVEL



UPPER LEVEL

www.huttonsingroup.com



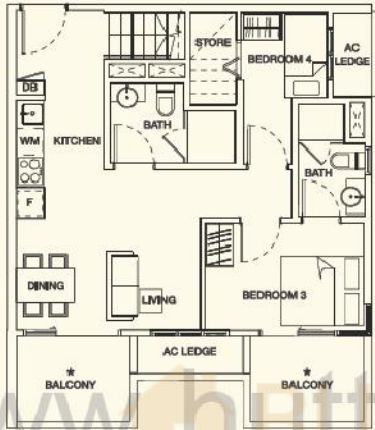
Note: Unit area includes a/c ledge & / or balcony* & / or roof terrace & / or strata void where applicable. All plans are subject to amendments as approved by the relevant authorities.
* The balcony shall not be enclosed. Only approved balcony screens are to be used. For an illustration of the approved balcony screen, please refer to page 48 of this brochure.

PENTHOUSE

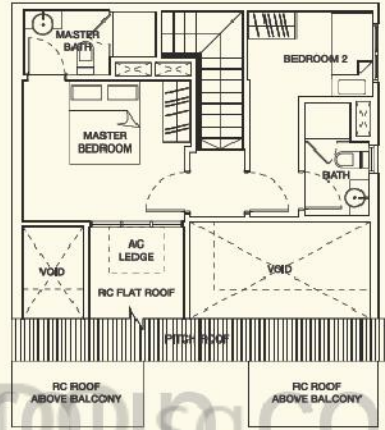
TYPE D2c-PH

4 bdrm
110 sqm

#04-25



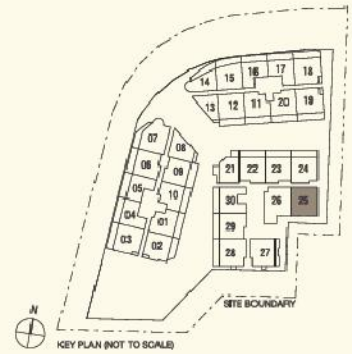
LOWER LEVEL



UPPER LEVEL

www.huttonsinglow.com

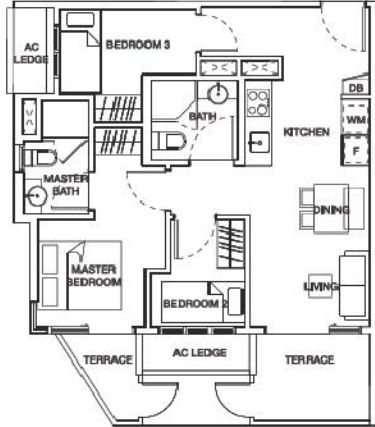
Note: Unit area includes a/c ledge & / or balcony* & / or roof terrace & / or strata void where applicable. All plans are subject to amendments as approved by the relevant authorities.
* The balcony shall not be enclosed. Only approved balcony screens are to be used. For an illustration of the approved balcony screen, please refer to page 48 of this brochure.



TYPE C2b-T

3 bdrm
66 sqm

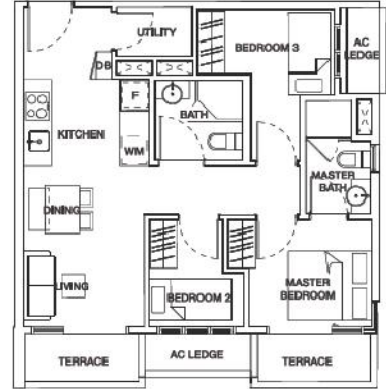
#02-02



TYPE C2c-T

3 bdrm
62 sqm

#02-25

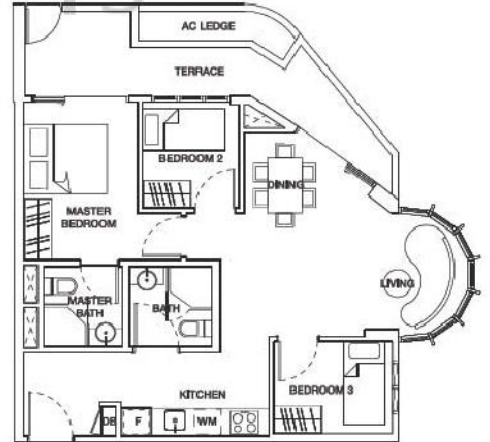


www.hattiasgroup.com

TYPE C3-T

3 bdrm
75 sqm

#02-07

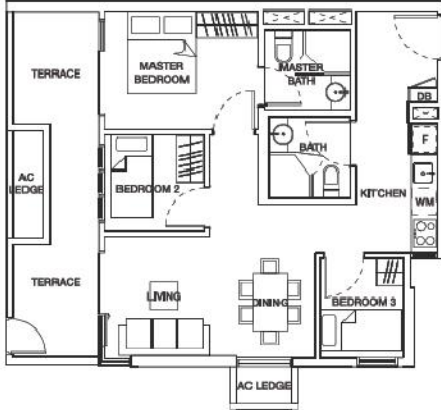


Note: Unit area includes a/c ledge & / or terrace where applicable.
All plans are subject to amendments as approved by the relevant authorities.

TYPE C4a-T

3 bdrm
71 sqm

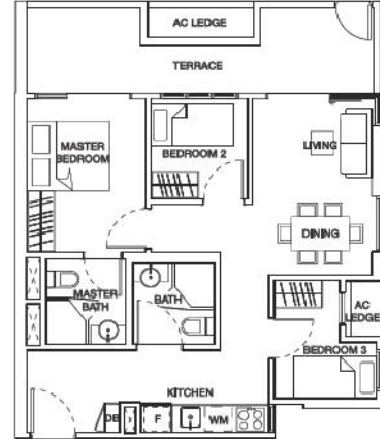
#02-28



TYPE C4c-T

3 bdrm
70 sqm

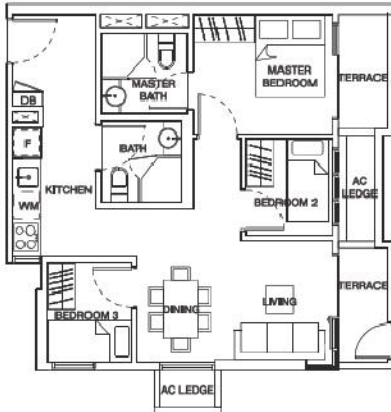
#02-24



TYPE C4b-T

3 bdrm
62 sqm

#02-27



www.huttonsgroup.com



KEY PLAN (NOT TO SCALE)
Note: Unit area includes a/c ledge & / or terrace where applicable.
All plans are subject to amendments as approved by the relevant authorities.

TYPE C1(L)

3 bdrm
69 sqm

#03-03



TYPE C1(R)

3 bdrm
69 sqm

#03-18

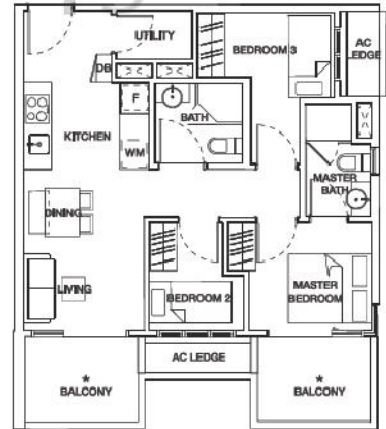


www.hattiasindia.com

TYPE C2a

3 bdrm
67 sqm

#03-19



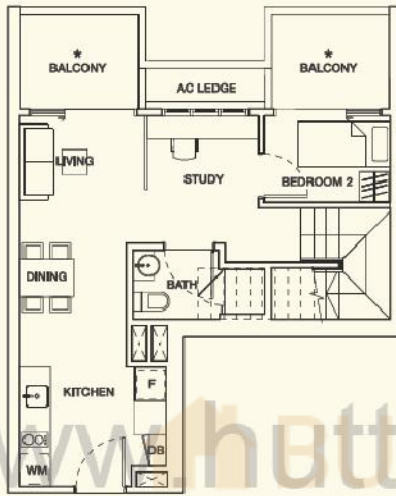
Note: Unit area includes a/c ledge & / or balcony* where applicable. All plans are subject to amendments as approved by the relevant authorities.
* The balcony shall not be enclosed. Only approved balcony screens are to be used. For an illustration of the approved balcony screen, please refer to page 48 of this brochure.

PENTHOUSE

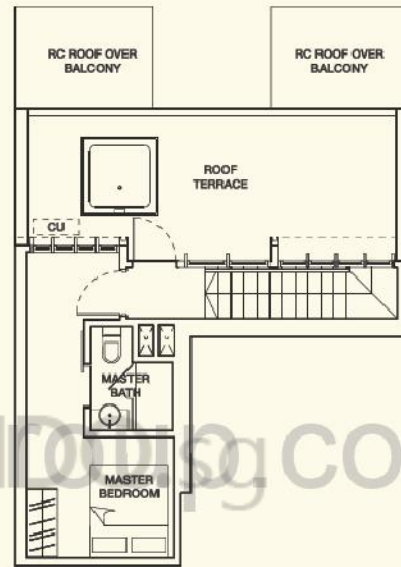
TYPE B1(L)-PH

2 bdrm
98 sqm

#04-04



LOWER LEVEL



UPPER LEVEL

www.huttonsgroup.com



KEY PLAN (NOT TO SCALE)

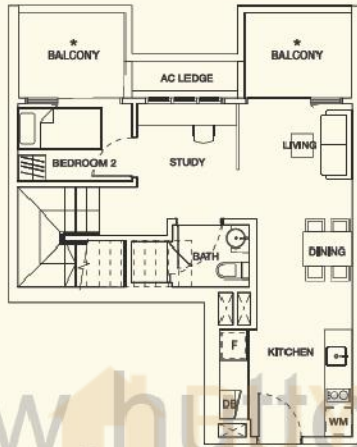
Note: Unit area includes a/c ledge & / or balcony* & / or roof terrace & / or strata void where applicable. All plans are subject to amendments as approved by the relevant authorities.
* The balcony shall not be enclosed. Only approved balcony screens are to be used. For an illustration of the approved balcony screen, please refer to page 48 of this brochure.

PENTHOUSE

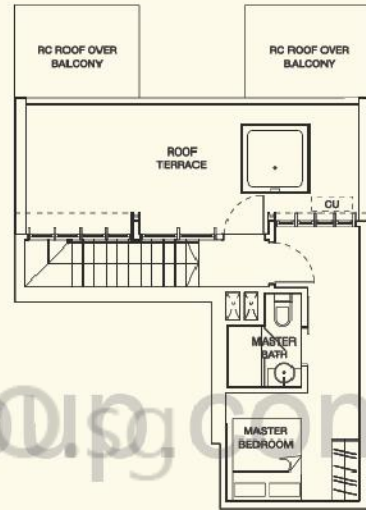
TYPE B1(R)-PH

2 bdrm
98 sqm

#04-17



LOWER LEVEL



UPPER LEVEL

www.huttonsgroup.sg.com



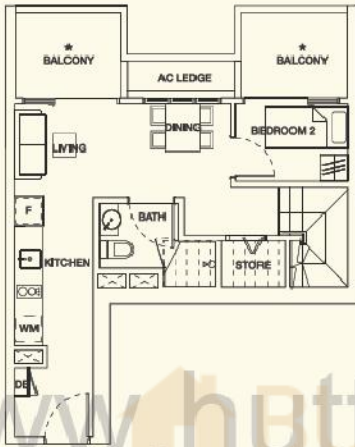
Note: Unit area includes a/c ledge & / or balcony* & / or roof terrace & / or strata void where applicable. All plans are subject to amendments as approved by the relevant authorities.
* The balcony shall not be enclosed. Only approved balcony screens are to be used. For an illustration of the approved balcony screen, please refer to page 48 of this brochure.

PENTHOUSE

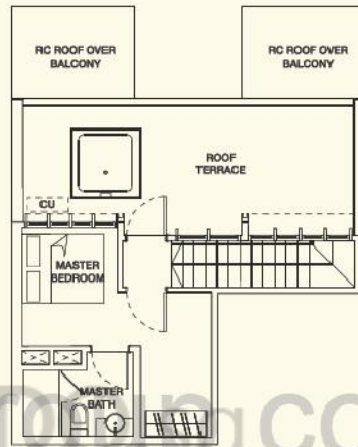
TYPE B2(L)-PH

2 bdrm
93 sqm

#04-16



LOWER LEVEL



UPPER LEVEL

www.huttonsingh.com

Note: Unit area includes a/c ledge & / or balcony* & / or roof terrace & / or strata void where applicable. All plans are subject to amendments as approved by the relevant authorities.
* The balcony shall not be enclosed. Only approved balcony screens are to be used. For an illustration of the approved balcony screen, please refer to page 48 of this brochure.



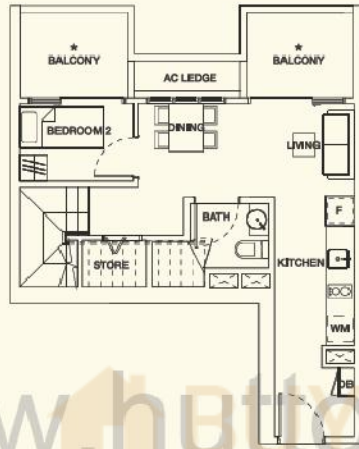
KEY PLAN (NOT TO SCALE)

PENTHOUSE

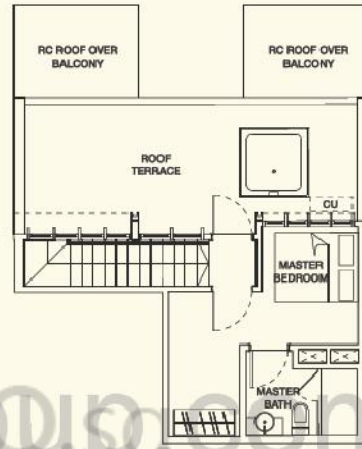
TYPE B2(R)-PH

2 bdrm
93 sqm

#04-05



LOWER LEVEL



UPPER LEVEL

www.huttonsgroup.com



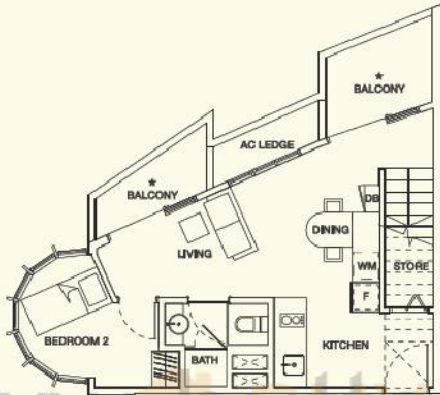
Note: Unit area includes a/c ledge & / or balcony* & / or roof terrace & / or strata void where applicable. All plans are subject to amendments as approved by the relevant authorities.
* The balcony shall not be enclosed. Only approved balcony screens are to be used. For an illustration of the approved balcony screen, please refer to page 48 of this brochure.

PENTHOUSE

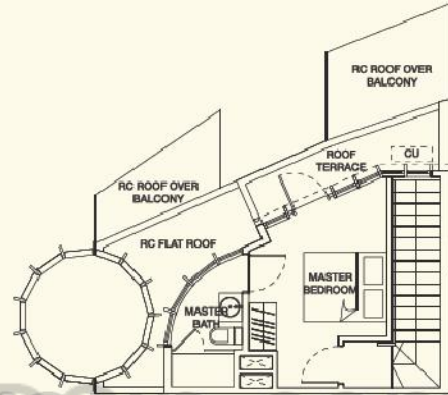
TYPE B3-PH

2 bdrm
77 sqm

#04-14



LOWER LEVEL



UPPER LEVEL

www.nettosgroup.sg.com



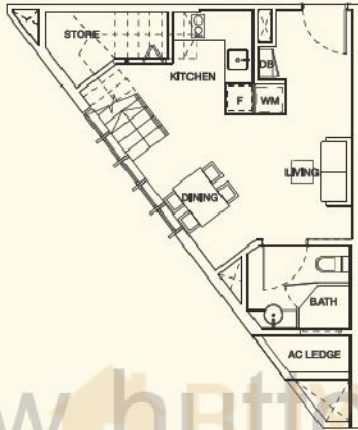
Note: Unit area includes a/c ledge & / or balcony* & / or roof terrace & / or strata void where applicable. All plans are subject to amendments as approved by the relevant authorities.
* The balcony shall not be enclosed. Only approved balcony screens are to be used. For an illustration of the approved balcony screen, please refer to page 48 of this brochure.

PENTHOUSE

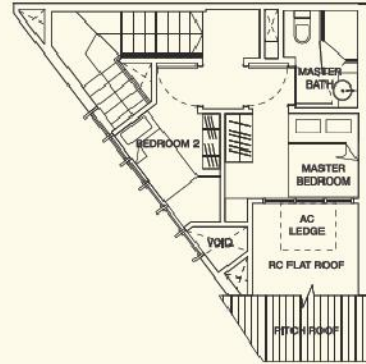
TYPE B4-PH

2 bdrm
61 sqm

#04-13



LOWER LEVEL



UPPER LEVEL

www.huttonsgroup.sg.com

Note: Unit area includes a/c ledge & / or roof terrace & / or strata void where applicable.
All plans are subject to amendments as approved by the relevant authorities.

