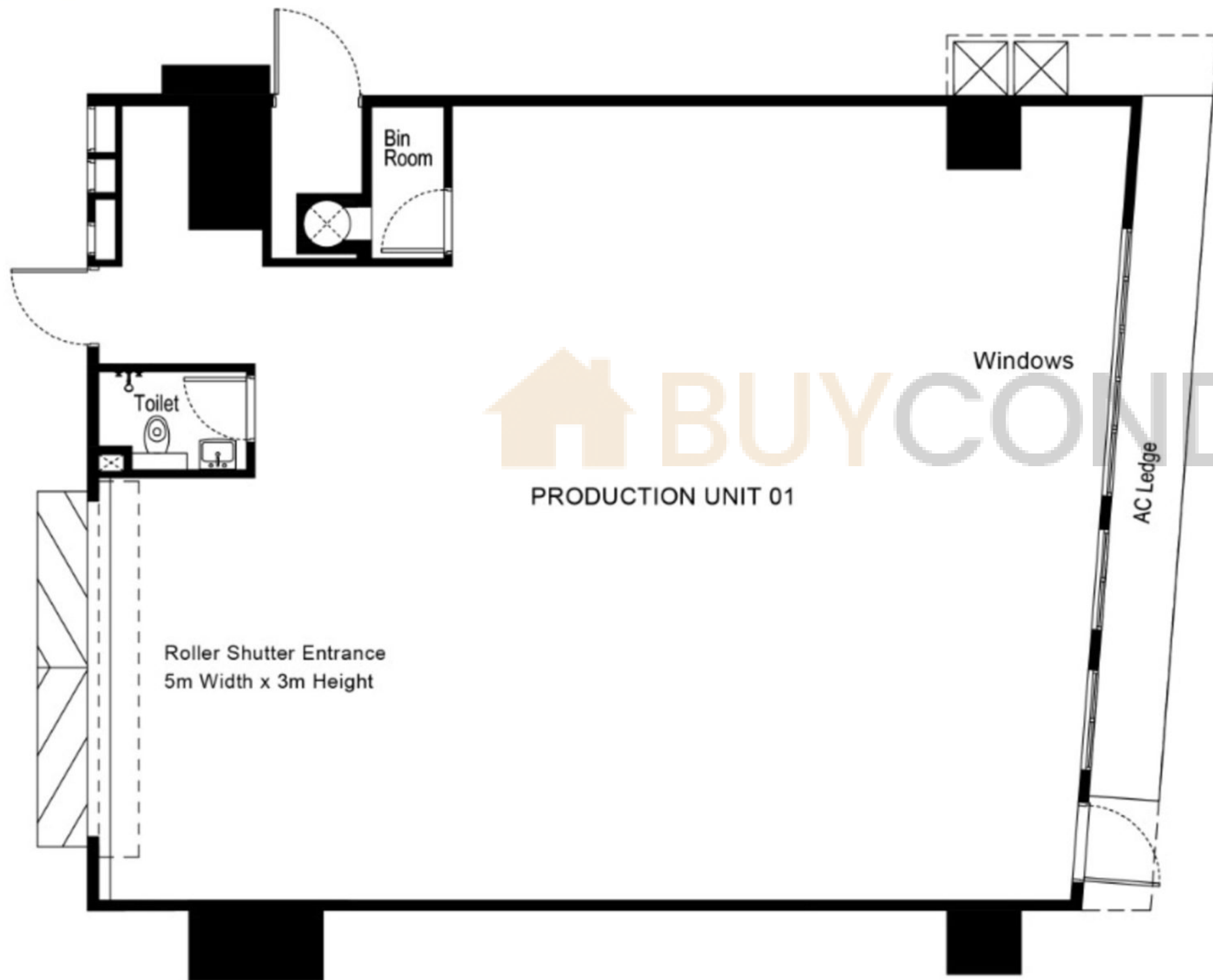


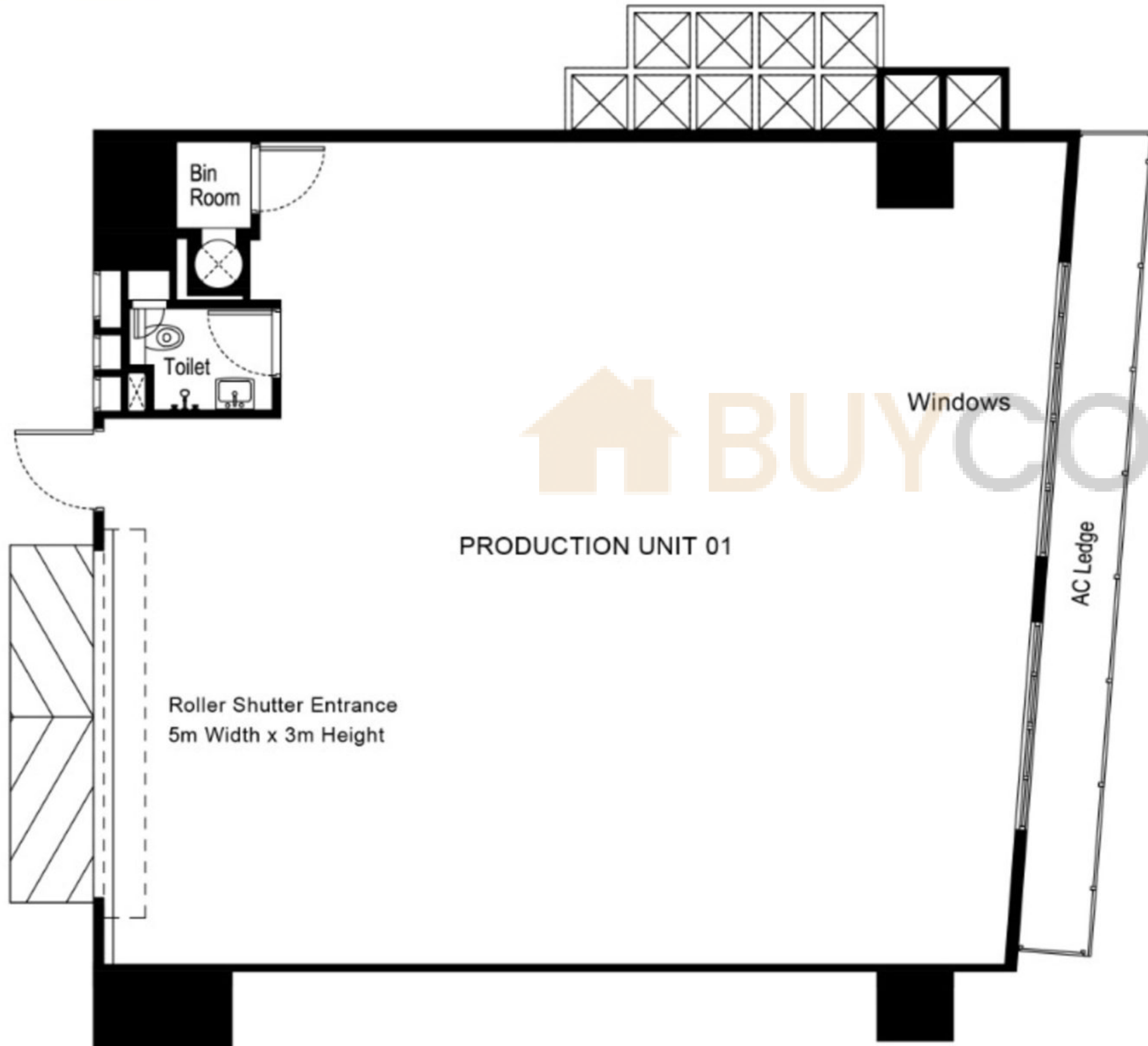
Ground Floor Unit 01-01



| | |
|----------------------------|--|
| Floor Area (estimate): | 2142ft ² (199m ²) |
| Power supply distribution: | 100A 3-phase (Electrical isolator) |
| Floor-to-floor height: | >6.5m |
| Floor Loading: | 12.5kN/sqm |
| 20 Footer Parking Lots: | 2 |



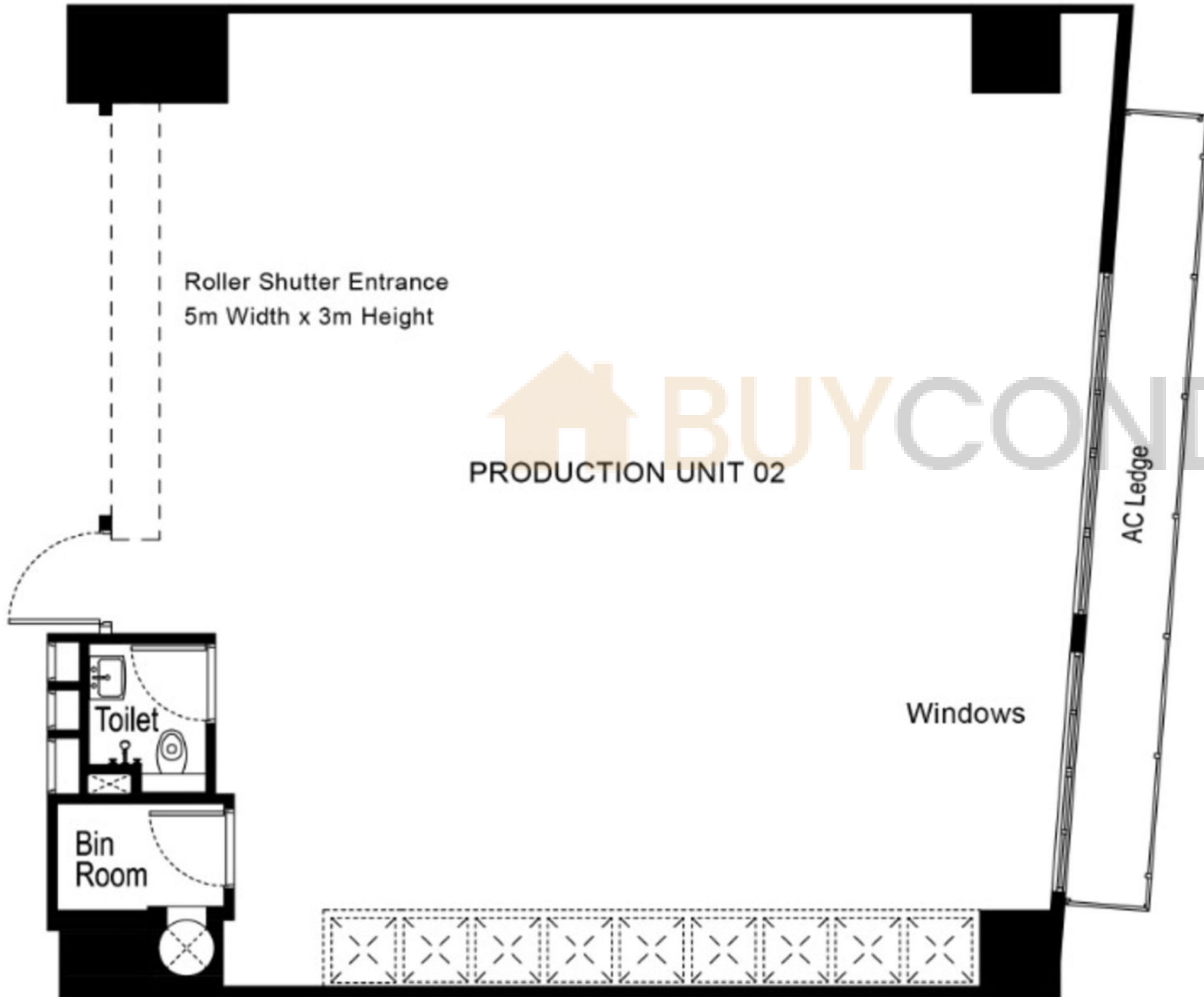
Levels 2-10
Unit 01



| | |
|----------------------------|--|
| Floor Area (estimate): | 1980ft ² (184m ²) |
| Power supply distribution: | 100A 3-phase (Electrical isolator) |
| Floor-to-floor height: | 5.6m |
| Floor Loading: | 12.5kN/sqm |
| 20 Footer Parking Lots: | 1 |



Levels 2-10
Unit 02

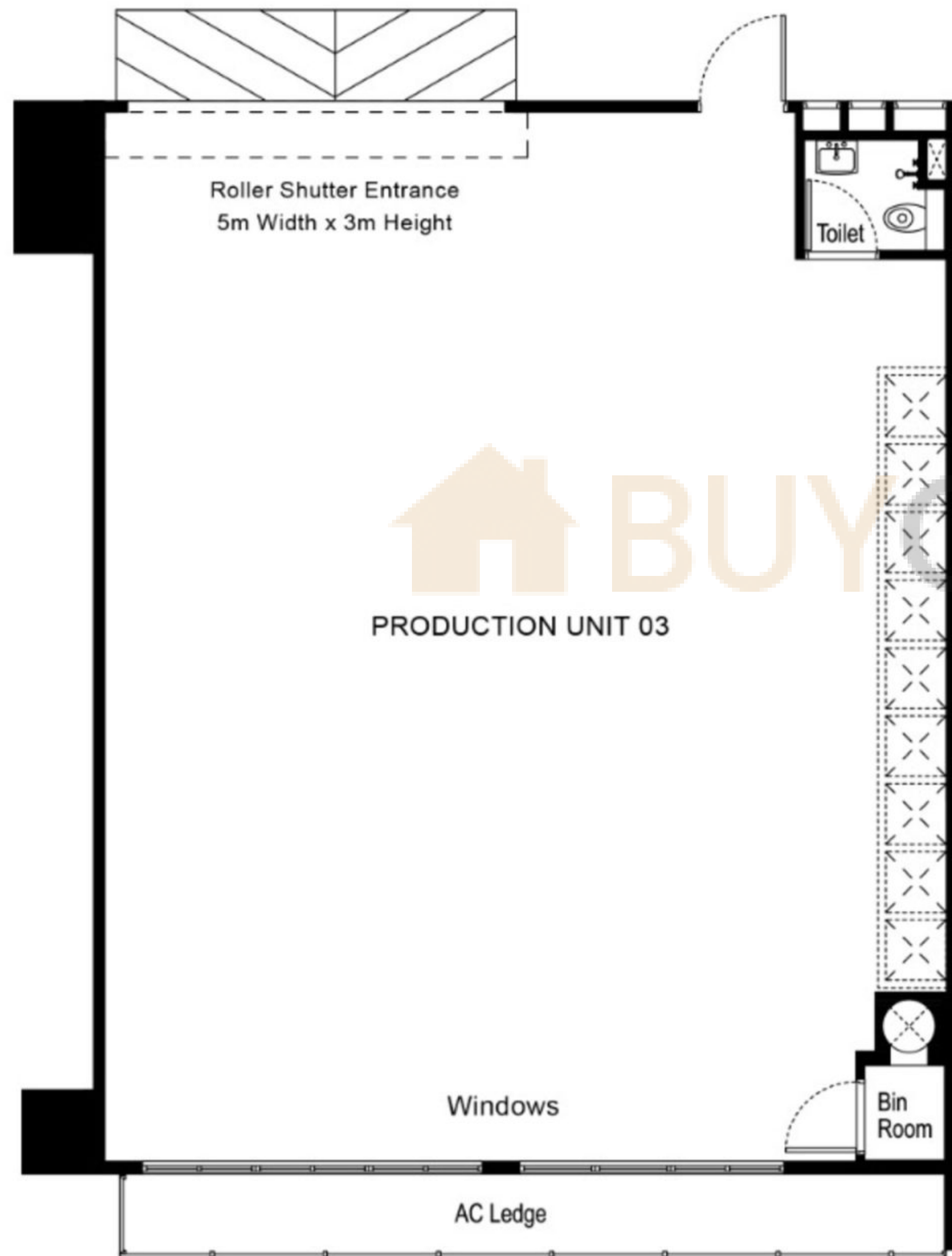


| | |
|----------------------------|--|
| Floor Area (estimate): | 1862ft ² (173m ²) |
| Power supply distribution: | 100A 3-phase (Electrical isolator) |
| Floor-to-floor height: | 5.6m |
| Floor Loading: | 12.5kN/sqm |
| 20 Footer Parking Lots: | 1 |



Floor Plan

Levels 2-10 Unit 03



| | |
|----------------------------|--|
| Floor Area (estimate): | 1926ft ² (179m ²) |
| Power supply distribution: | 100A 3-phase (Electrical isolator) |
| Floor-to-floor height: | 5.6m |
| Floor Loading: | 12.5kN/sqm |
| 20 Footer Parking Lots: | 1 |



Floor Plan

Levels 2-10 Unit 04

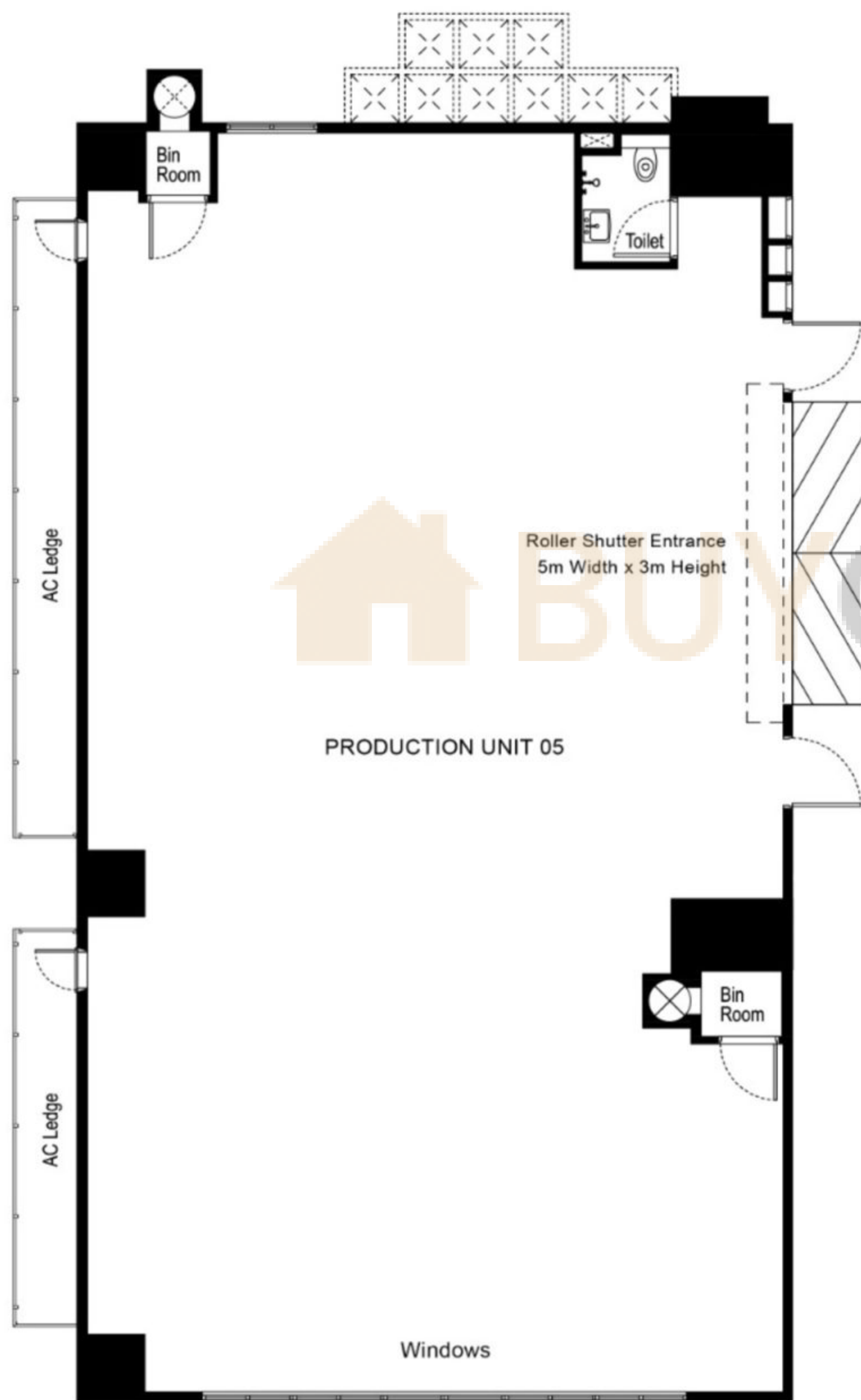


| | |
|----------------------------|--|
| Floor Area (estimate): | 1980ft ² (184m ²) |
| Power supply distribution: | 100A 3-phase (Electrical isolator) |
| Floor-to-floor height: | 5.6m |
| Floor Loading: | 12.5kN/sqm |
| 20 Footer Parking Lots: | 1 |



Floor Plan

Levels 2-10 Unit 05



| | |
|----------------------------|--|
| Floor Area (estimate): | 2927ft ² (272m ²) |
| Power supply distribution: | 150A 3-phase (Electrical isolator) |
| Floor-to-floor height: | 5.6m |
| Floor Loading: | 12.5kN/sqm |
| 20 Footer Parking Lots: | 1 |

