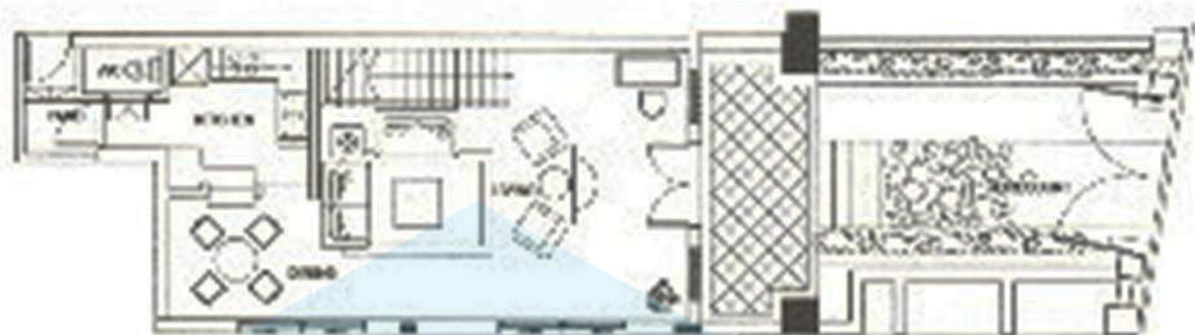


# ARAK HOUSE

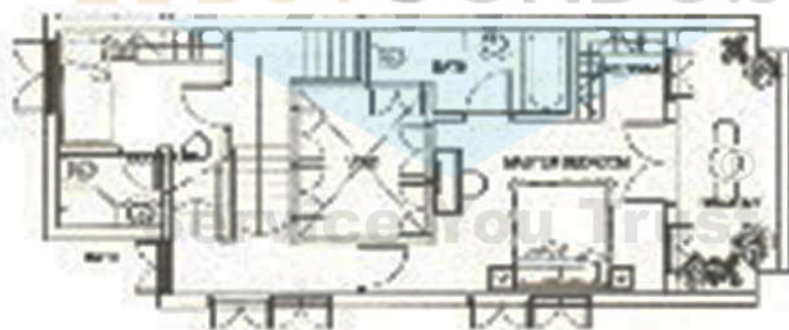
64 KIM YAM ROAD

A spirit distilled from grain, rice or sugar cane, *arak* was the favourite tippie of most of the locals and nor a few 'Masters' as well.

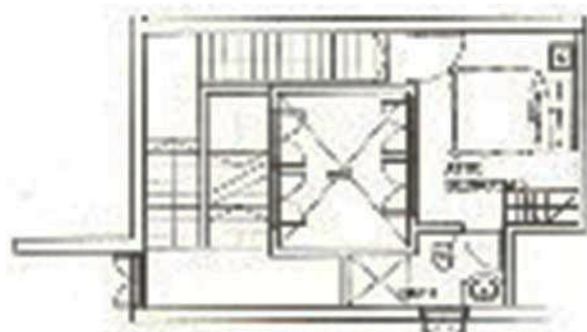
1st Storey



2nd Storey



Attic



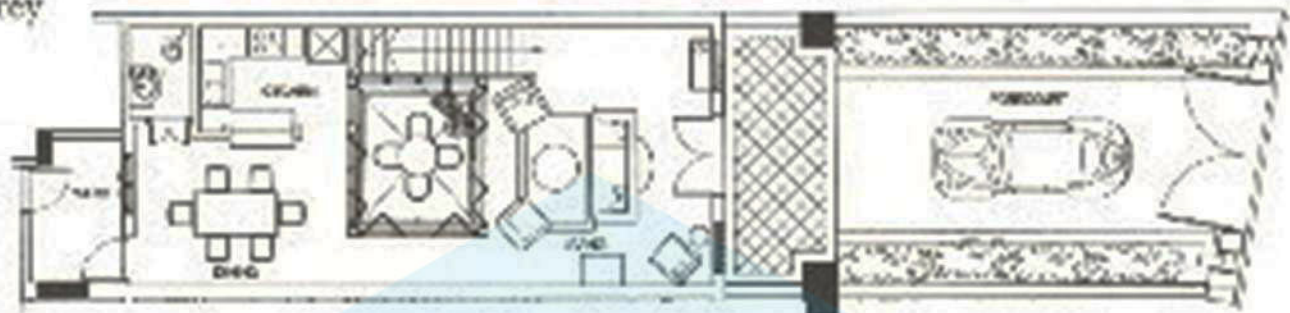
3 Bedrooms, 211 sq m  
(including forecourt 29 sq m)

# PINANG HOUSE

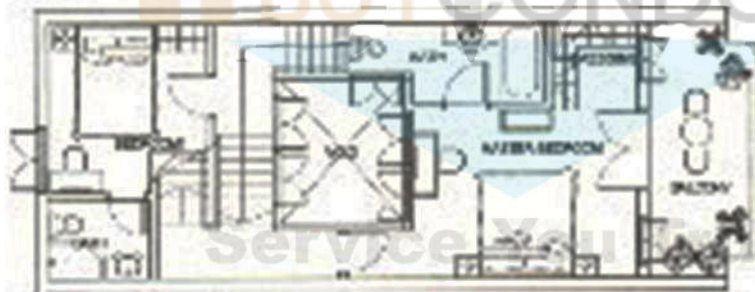
60 KIM YAM ROAD

The areca nut, or *pinang*, wrapped in betel leaf, was a favourite amongst the Nonyas and Chinese. Chewed with tobacco, it produced a blood red juice, resulting in an era where a brightly stained mouth was quite common.

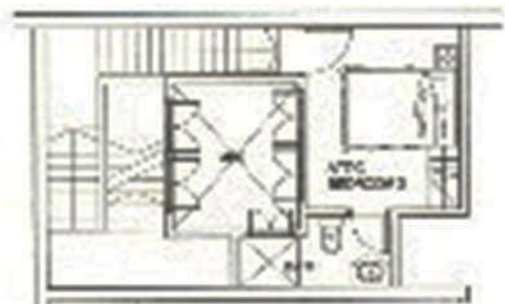
1st Storey



2nd Storey



Attic



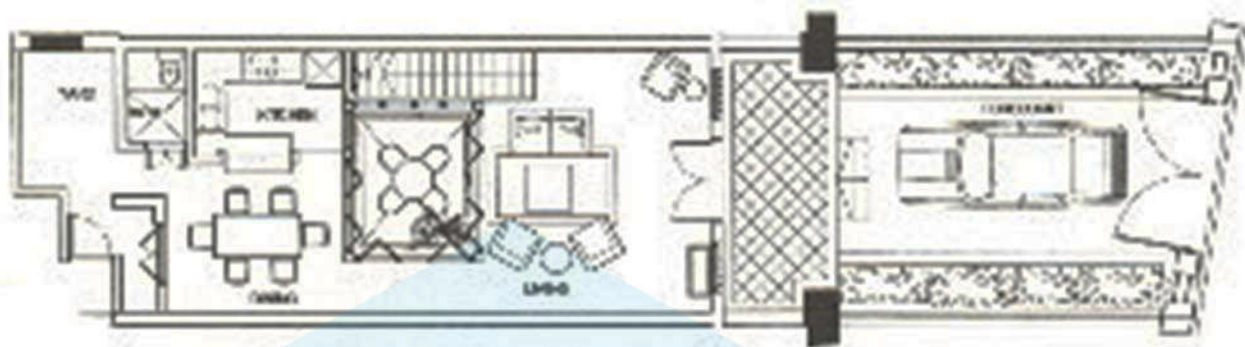
3 Bedrooms, 241 sq m  
(including forecourt 45 sq m)

# SIREH HOUSE

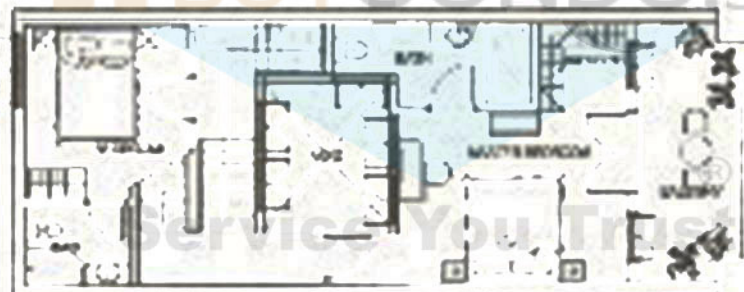
62 KIM YAM ROAD

Chewing fresh betel nut leaves or *sireh*, was the sign of a contented Nonya. Wrapped around *pinang* shavings and small pieces of gambier, this treat was a fixture of daily life.

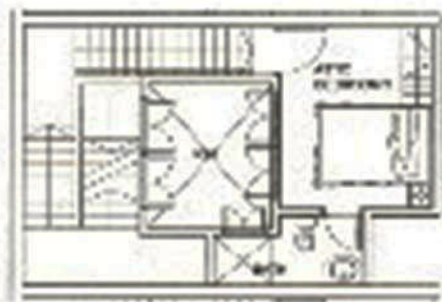
1st Storey



2nd Storey



Attic

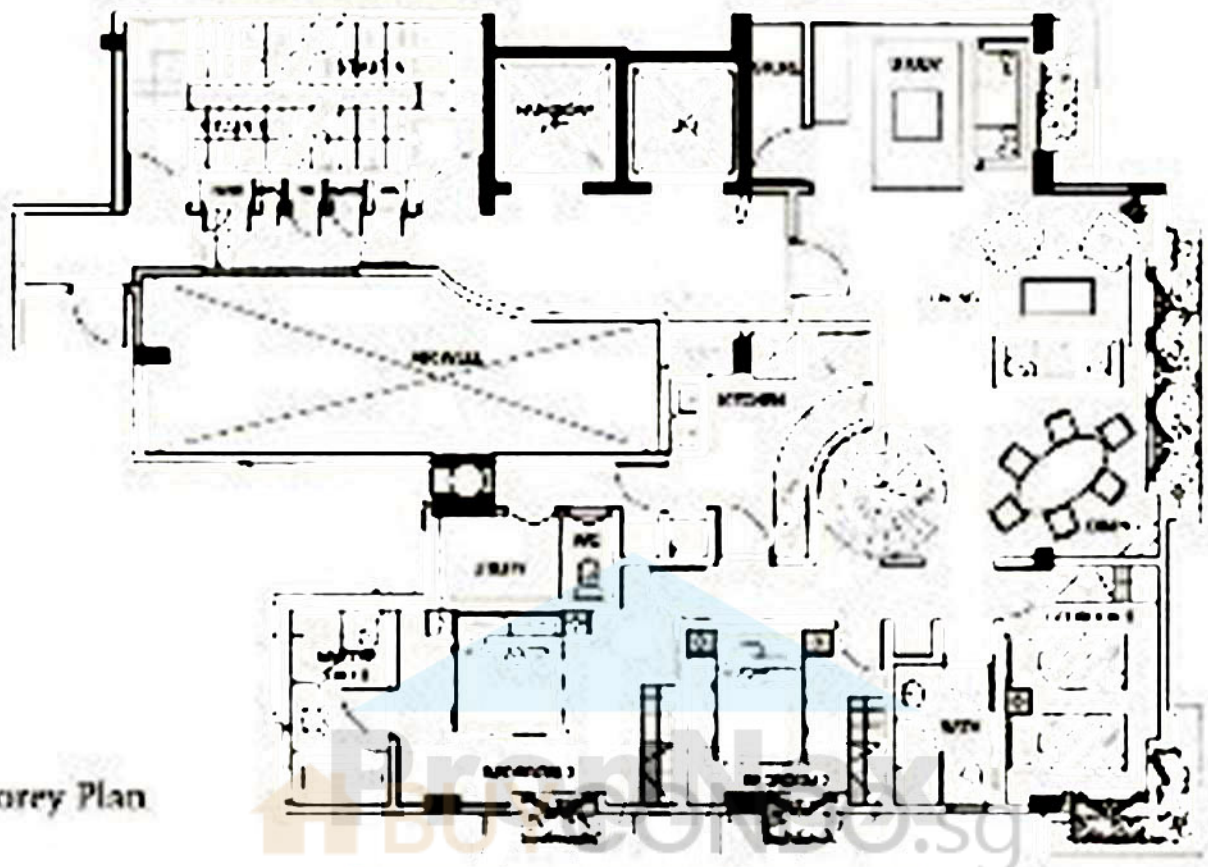


3 Bedrooms, 237 sq m  
(including forecourt 39 sq m)

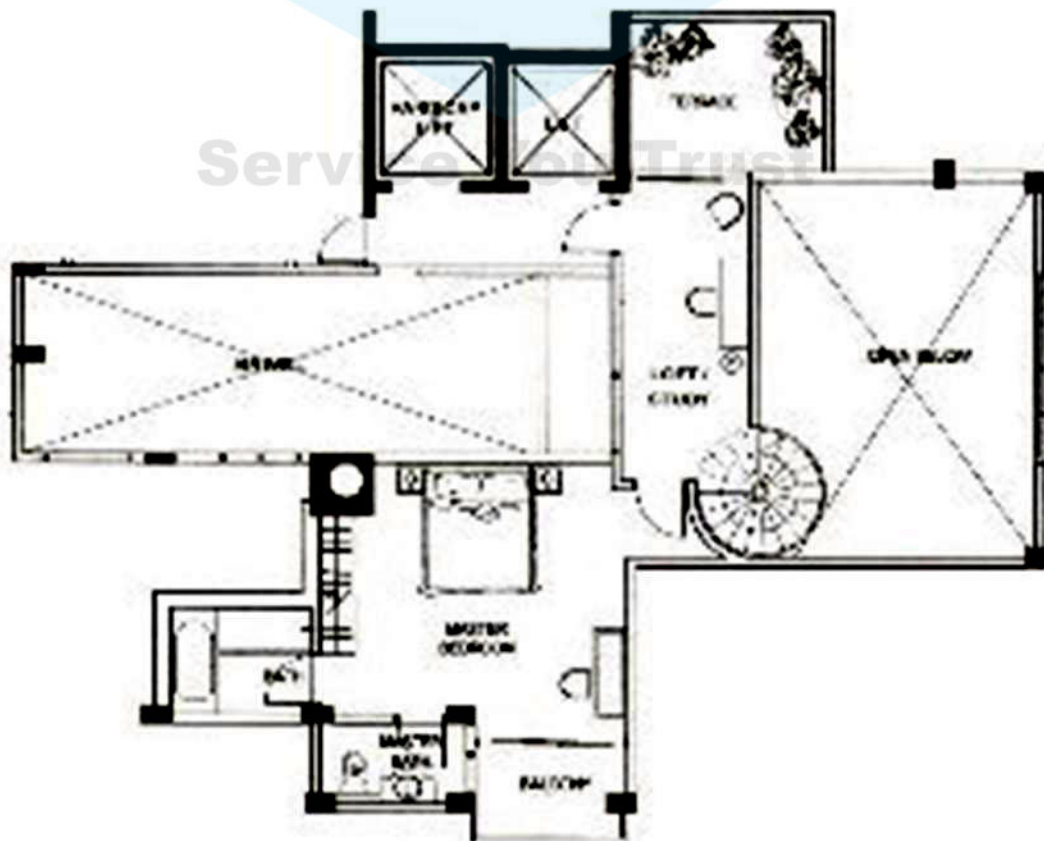


# SULTAN'S VIEW PENTHOUSE

66 KIM YAM ROAD  
TENTH FLOOR/ATTIC



10th Storey Plan



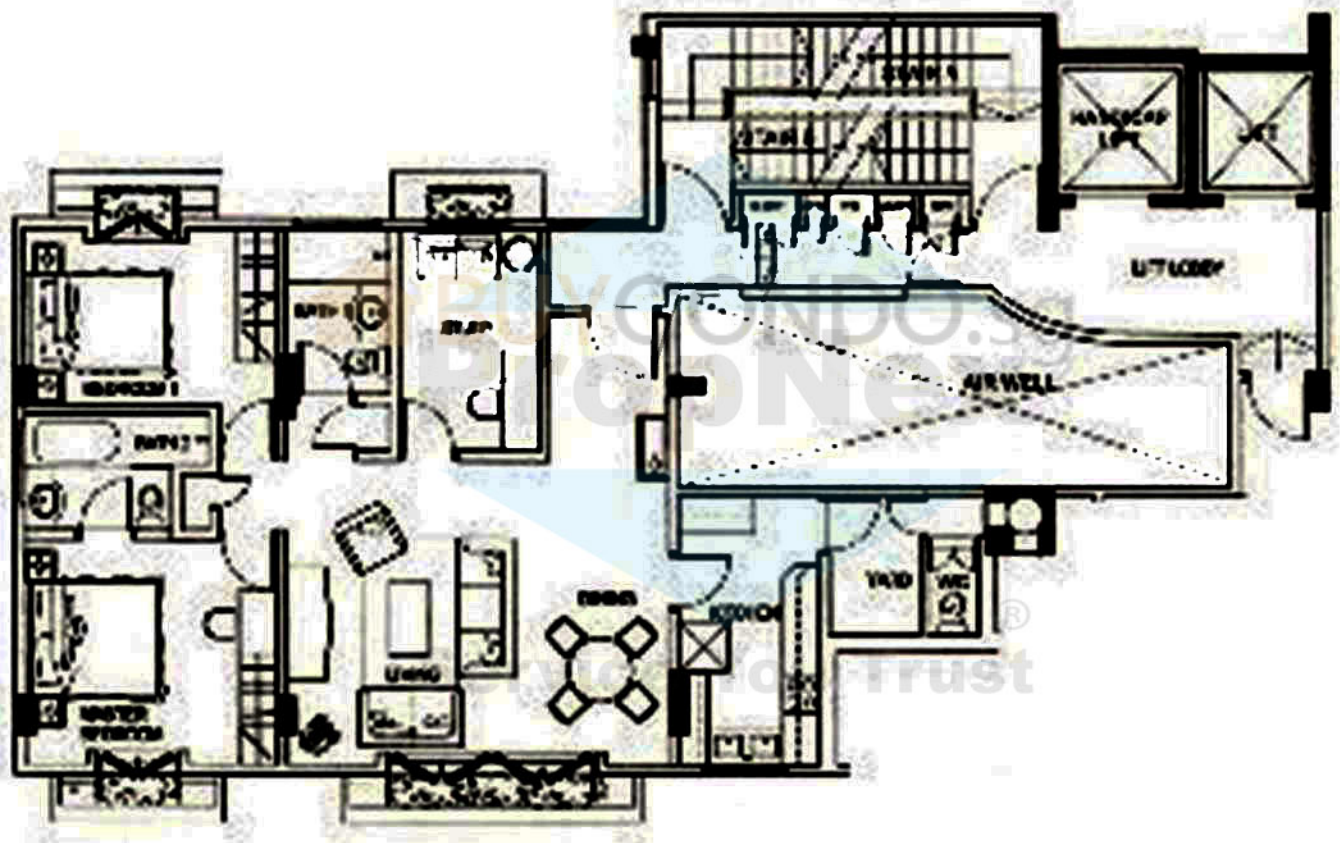
Attic Plan

4 Bedrooms, 207 sq m

# THE CLEMENCEAU

66 KIM YAK ROAD

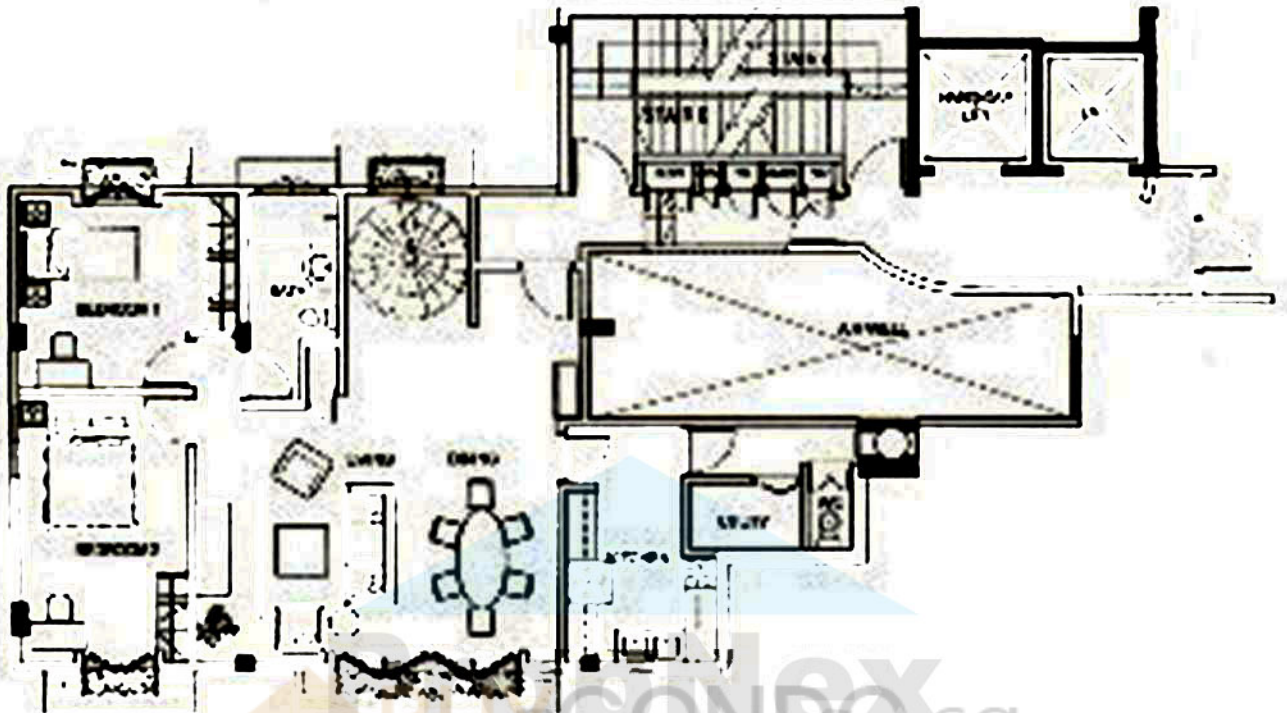
AVAILABLE FROM THE SECOND THROUGH NINTH FLOORS



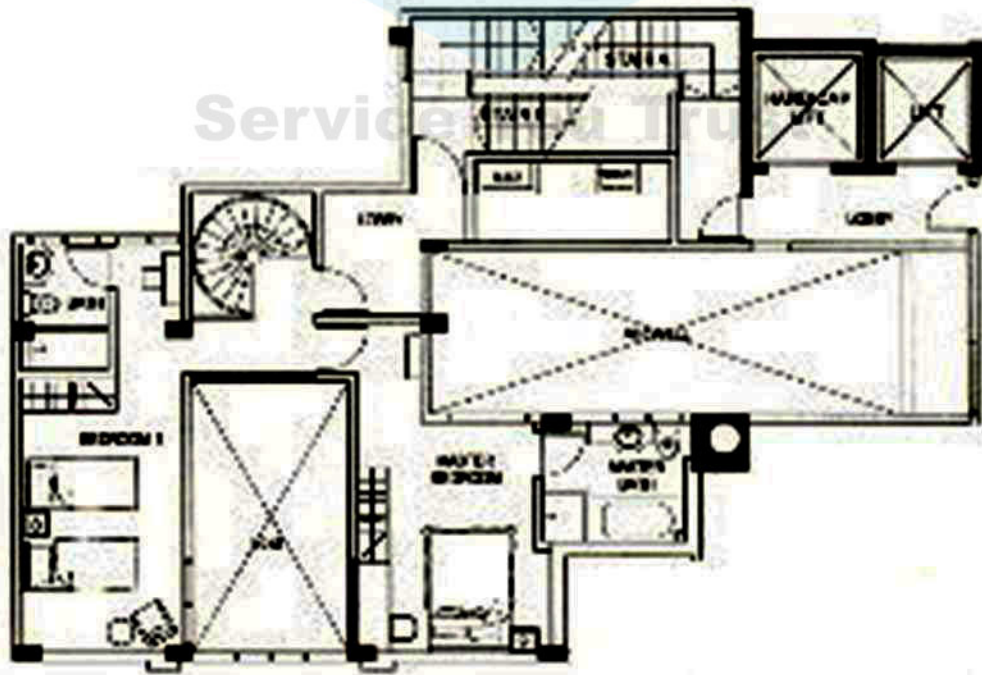
2 1/2 Bedrooms, 106 sq m

# CLEMENCEAU PENTHOUSE

66 KIM YAM ROAD  
TENTH FLOOR/ATTIC



10th Storey Plan



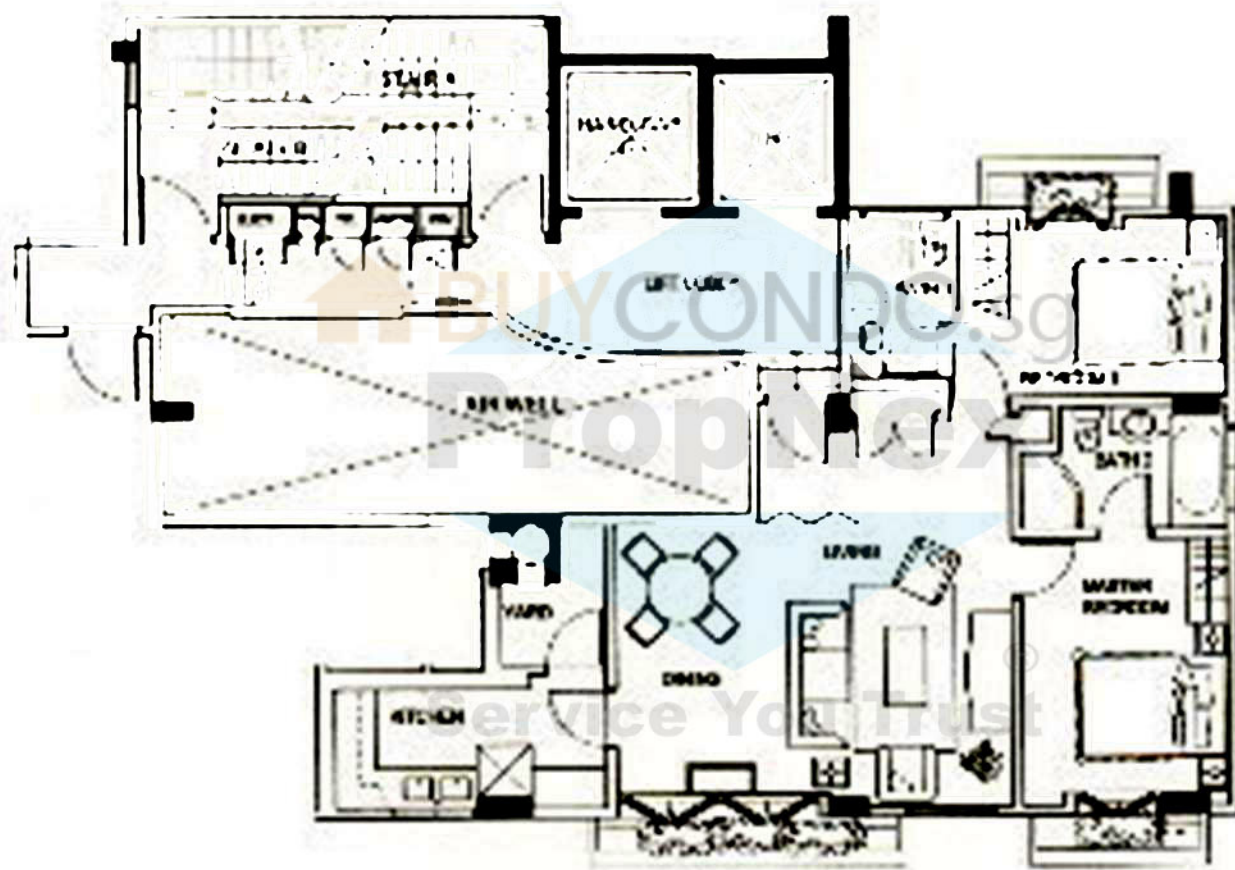
Attic Plan

4 Bedrooms, 164 sq m

# THE ROBERTSON

66 KIM YAM ROAD

AVAILABLE FROM THE SECOND THROUGH FOURTH FLOORS



2 Bedrooms, 87 sq m