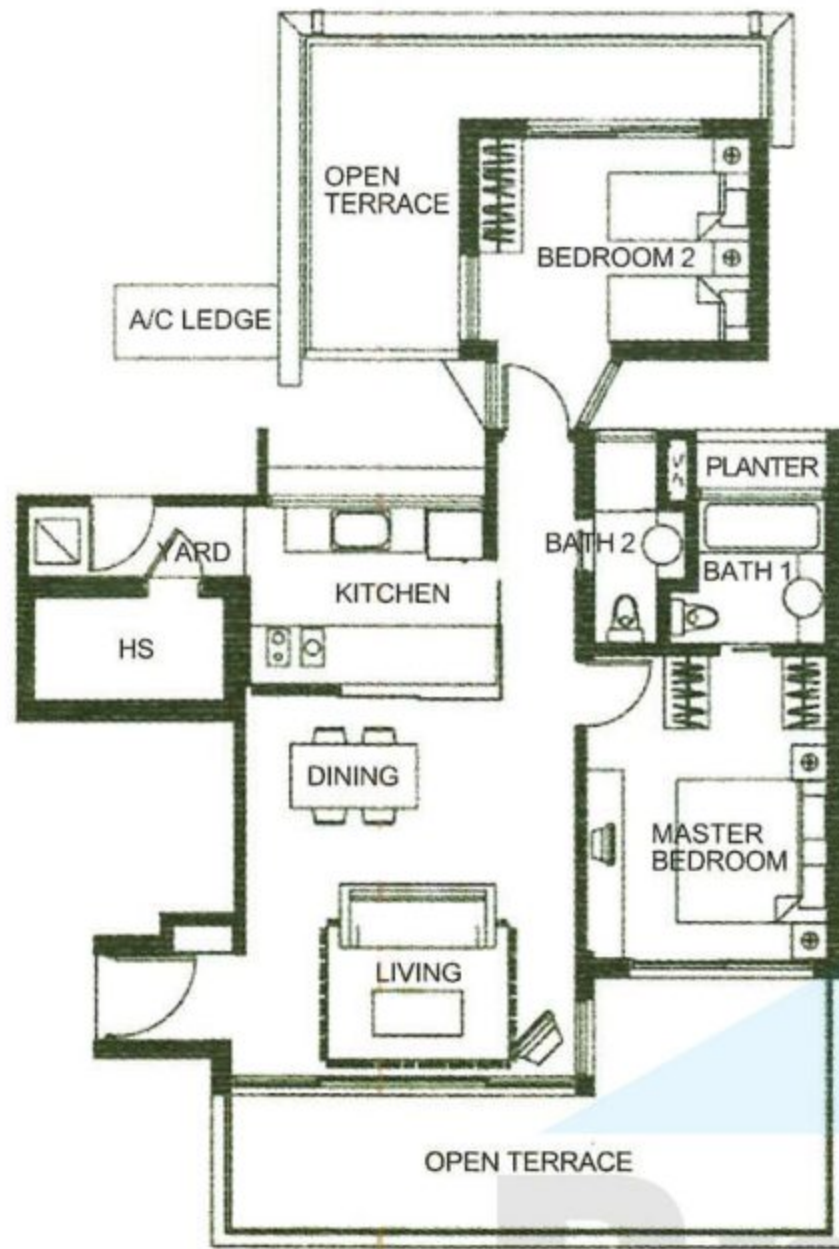


Garden Apartments

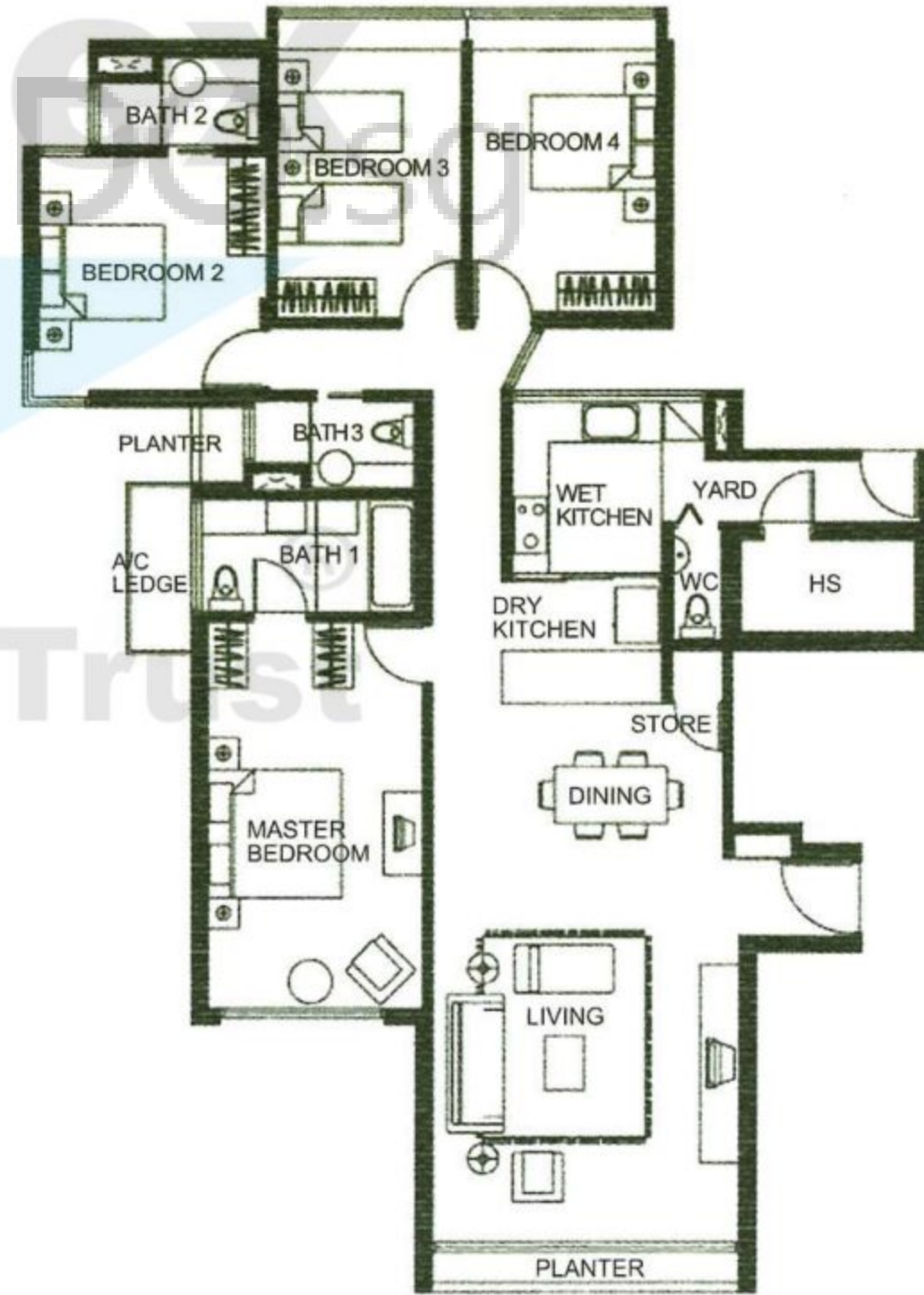
Type A1

#04-02 to 10, #04-12 to 14, #04-16 to 21,
 #04-23 to 30, #04-33 to 39, #04-41
 125 sqm (1,346 sqft)



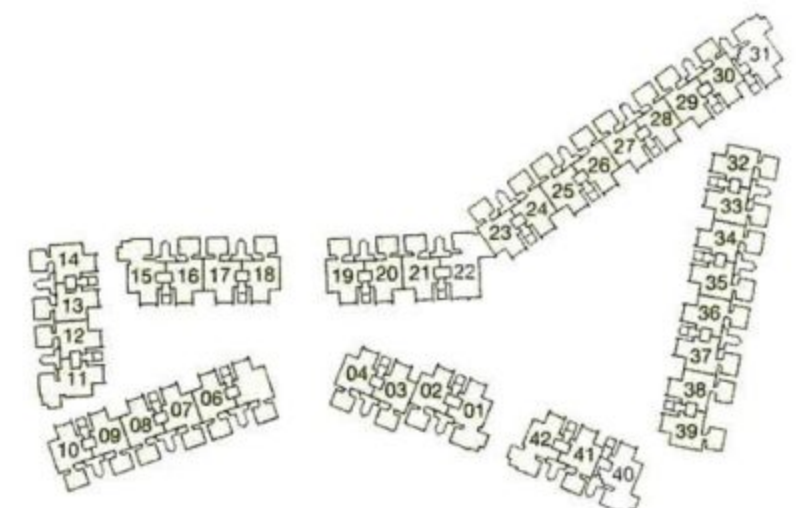
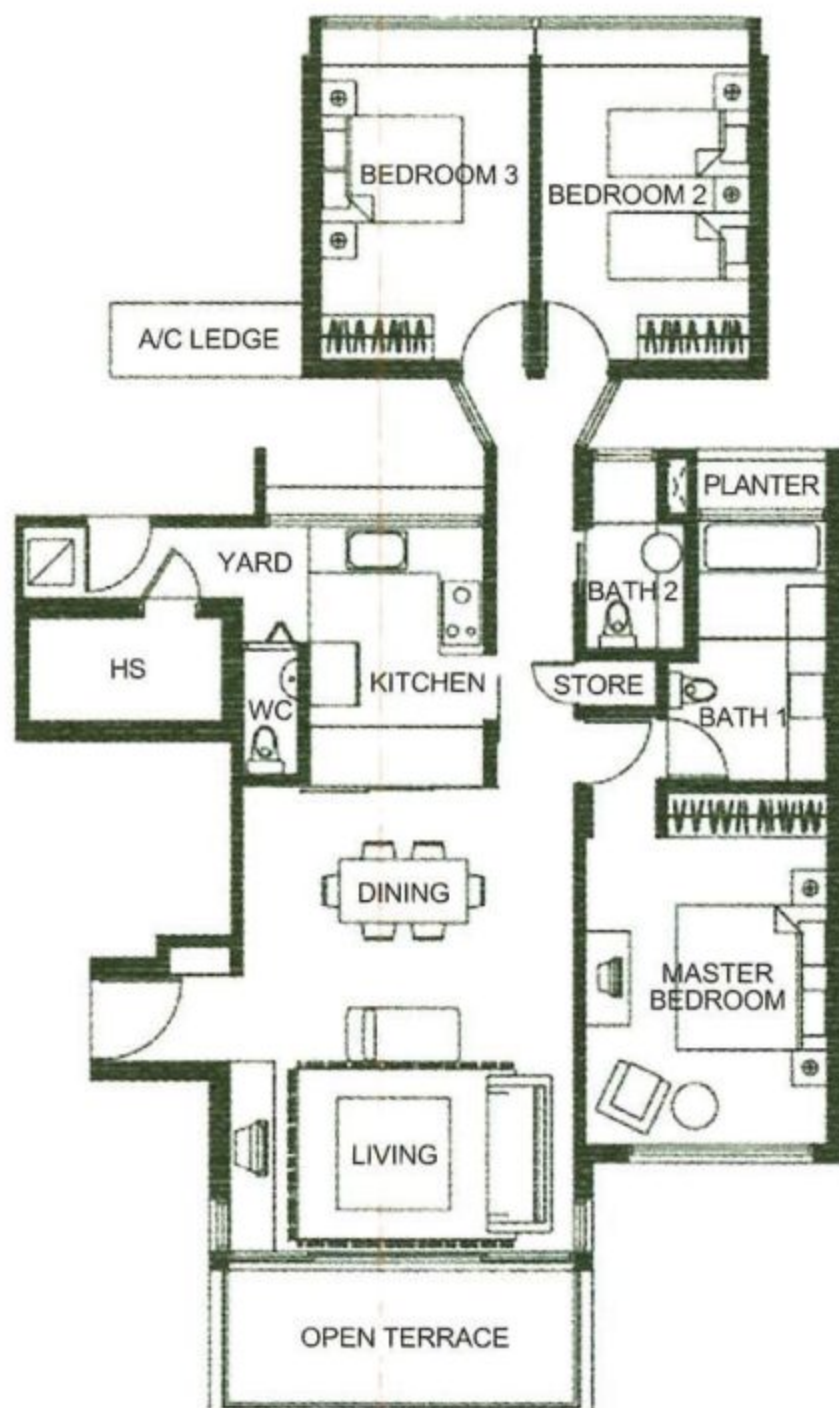
Type A3

#02-01 to #04-01, #02-11 to #04-11,
 #02-15 to #04-15, #02-32 to #04-32,
 #02-42 to #04-42
 159 sqm (1,711 sqft)



Type A2

#03-02 to 10, #03-12 to 14, #03-16 to 21,
 #03-23 to 30, #03-33 to 39, #03-41
 134 sqm (1,442 sqft)

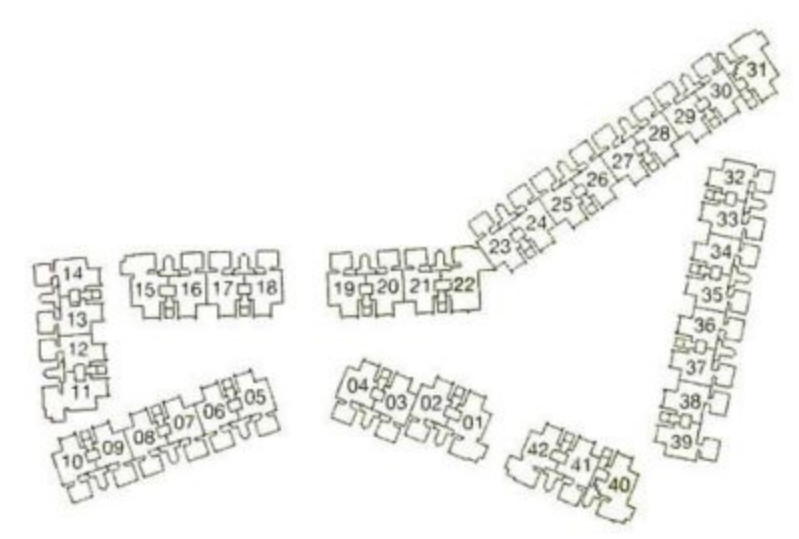
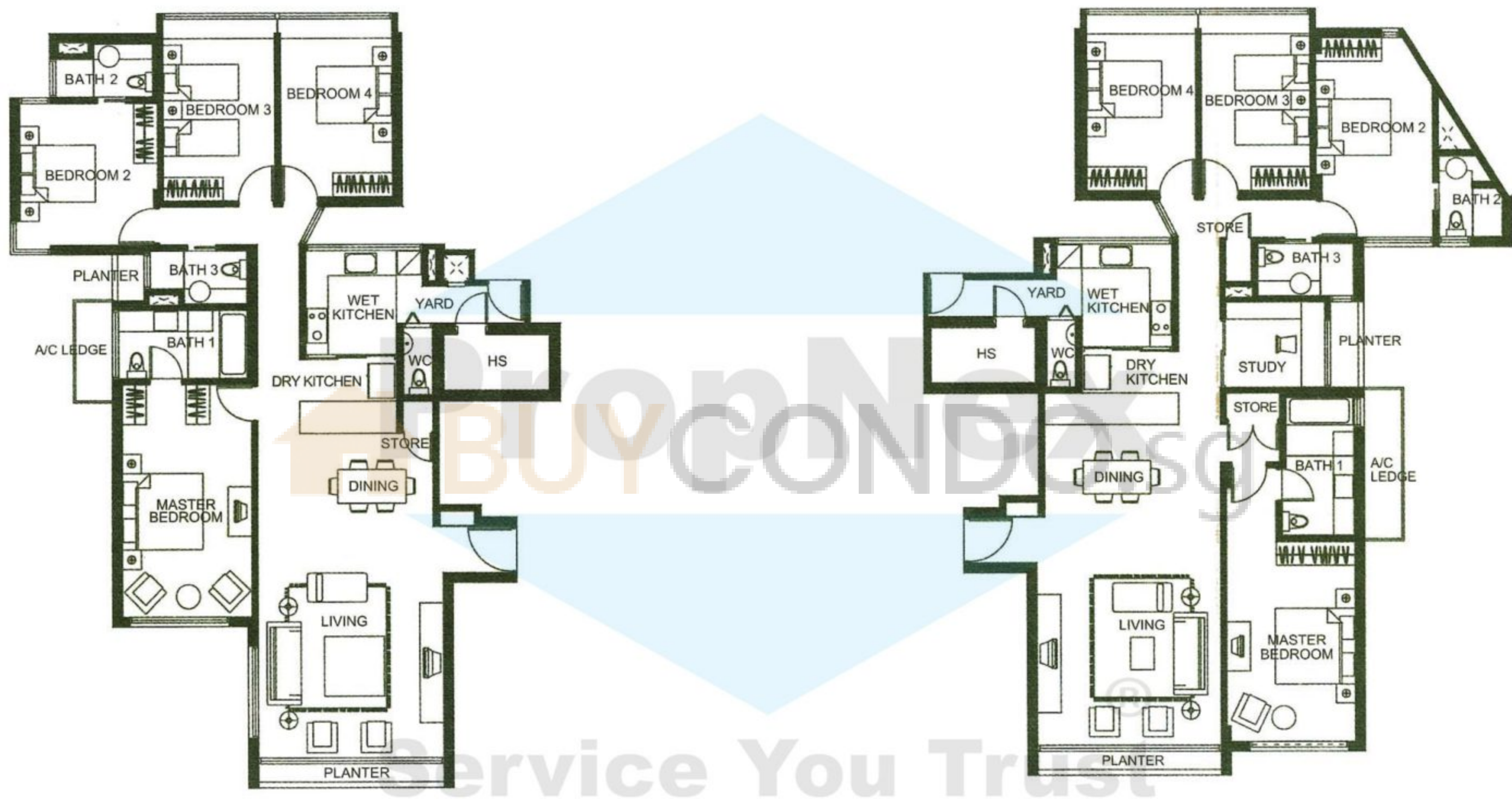


Type A3a

#02-31 to #04-31, #02-40 to #04-40
158 sqm (1,701 sqft)

Type A4

#02-22 to #04-22
175 sqm (1,884 sqft)



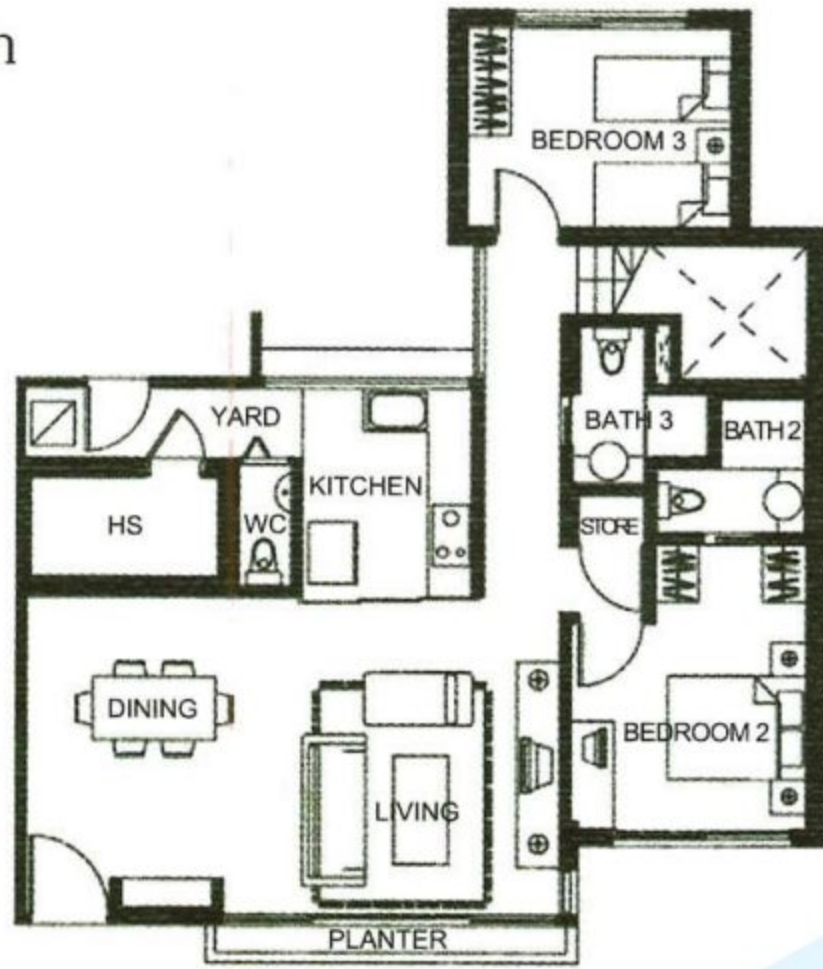
The plans are subject to change as may be required or approved by the relevant authorities. These are not drawn to scale and are for the purpose of a visual presentation of the different layouts that are available. Areas are estimates only and are subject to final survey.

Garden Lofts

Type L1

#05-02 to 10, #05-12 to 14, #05-16 to 21,
#05-23 to 30, #05-33 to 39, #05-41
185 sqm (1,991 sqft)

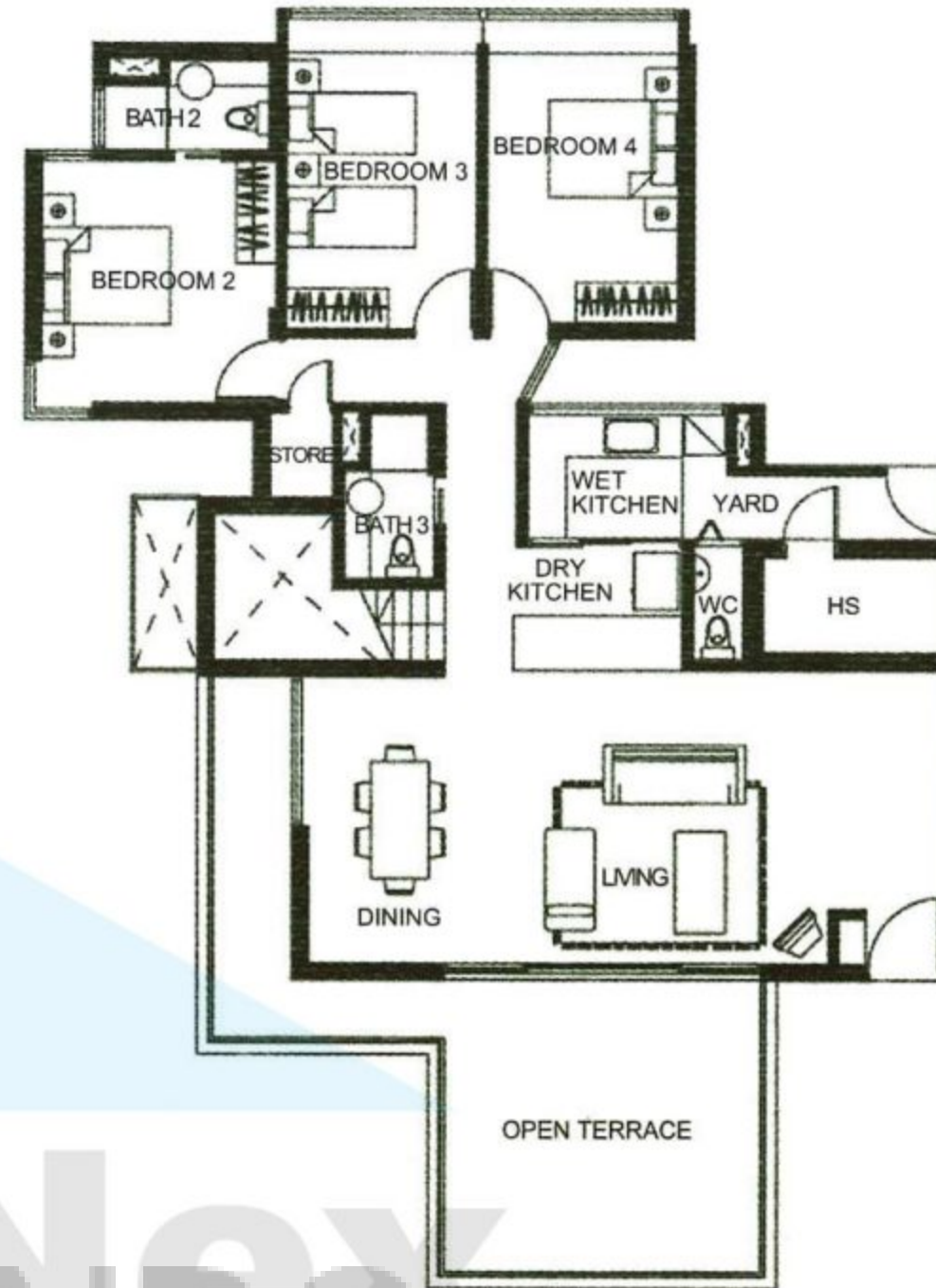
5th Storey Plan



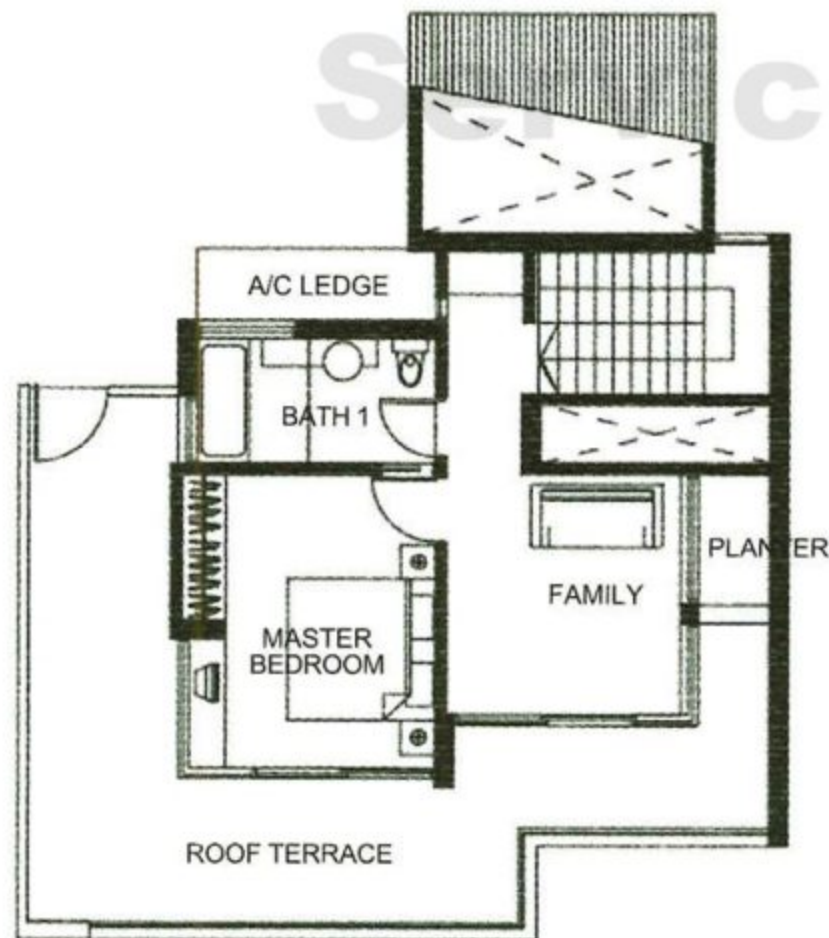
Type L2

#05-01, #05-11, #05-15, #05-32, #05-42
241 sqm (2,594 sqft)

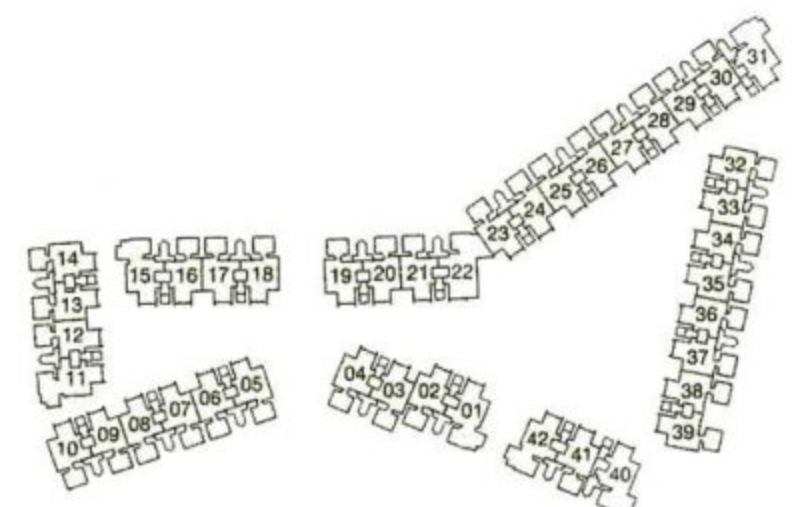
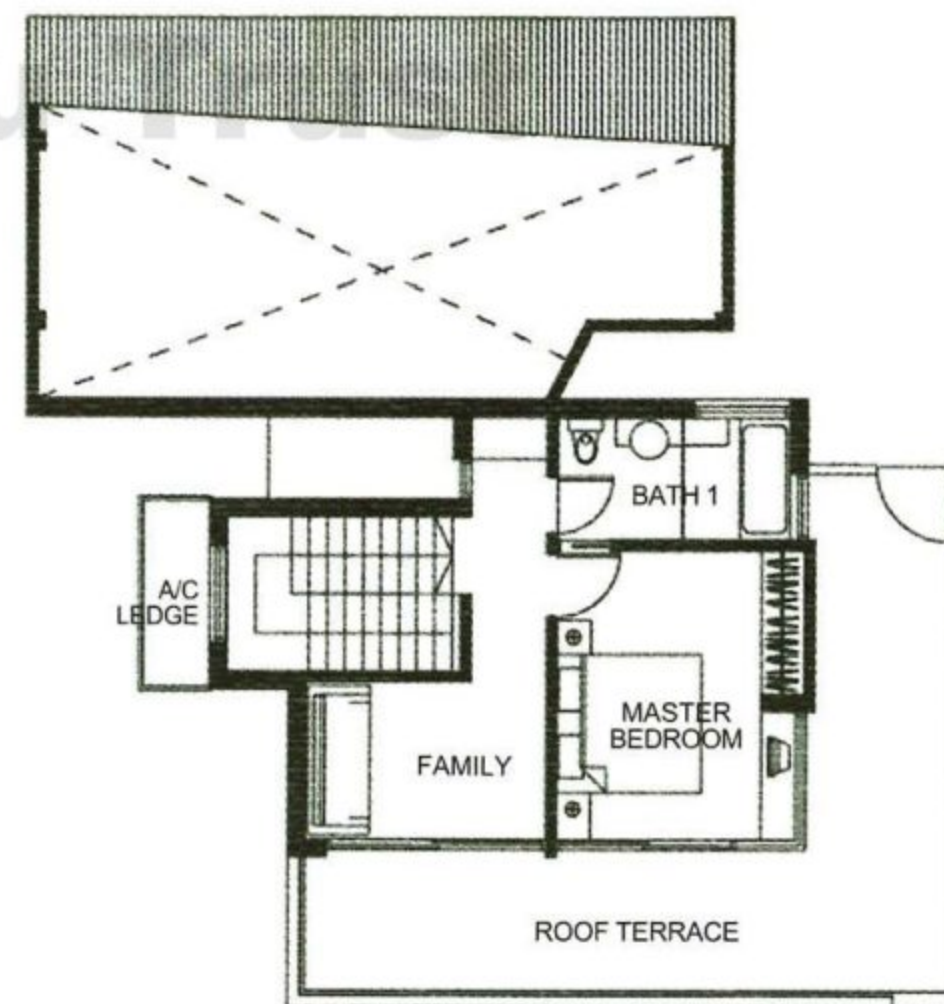
5th Storey Plan



Attic Storey Plan



Attic Storey Plan



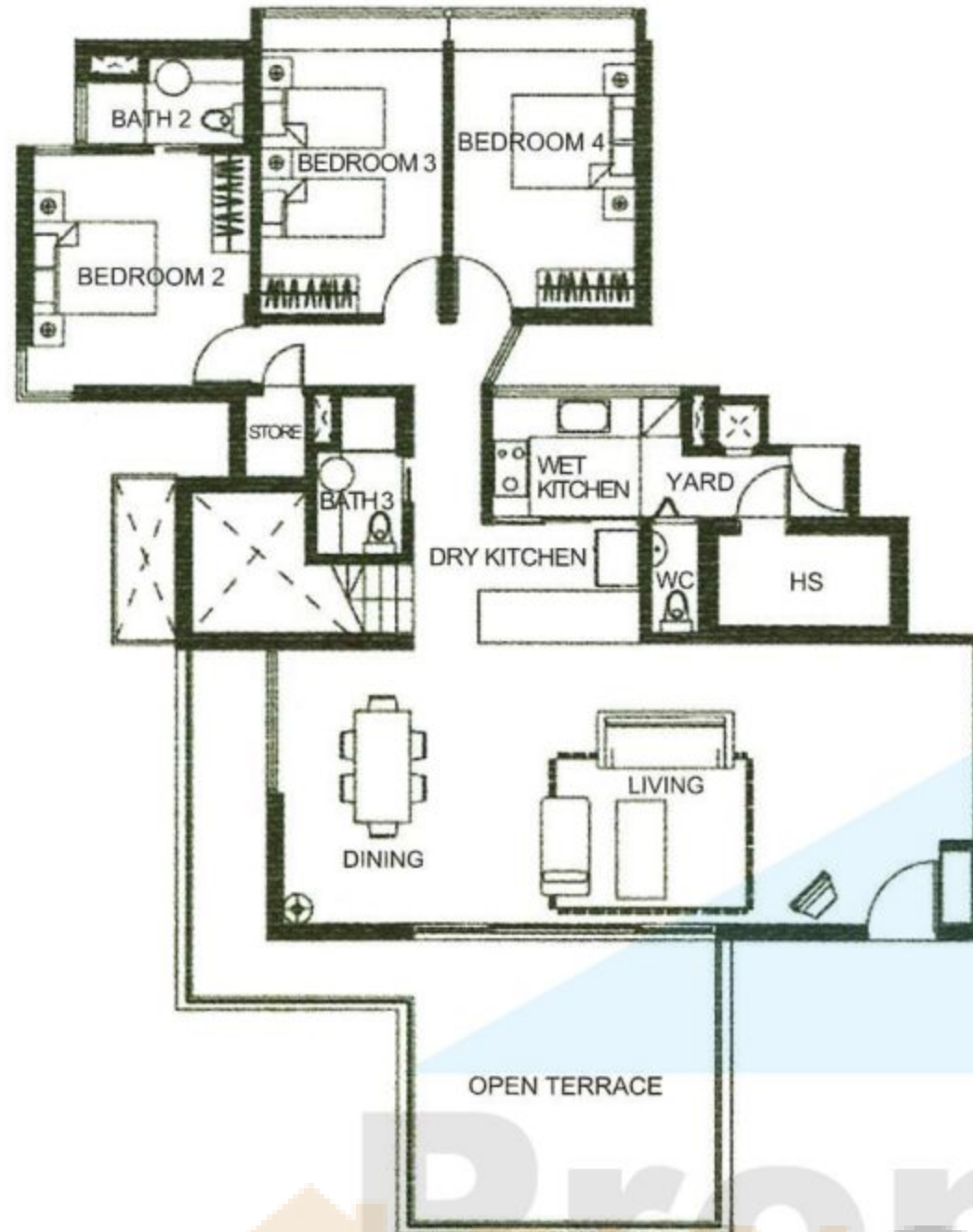
Type L2a

#05-31, #05-40
243 sqm (2,616 sqft)

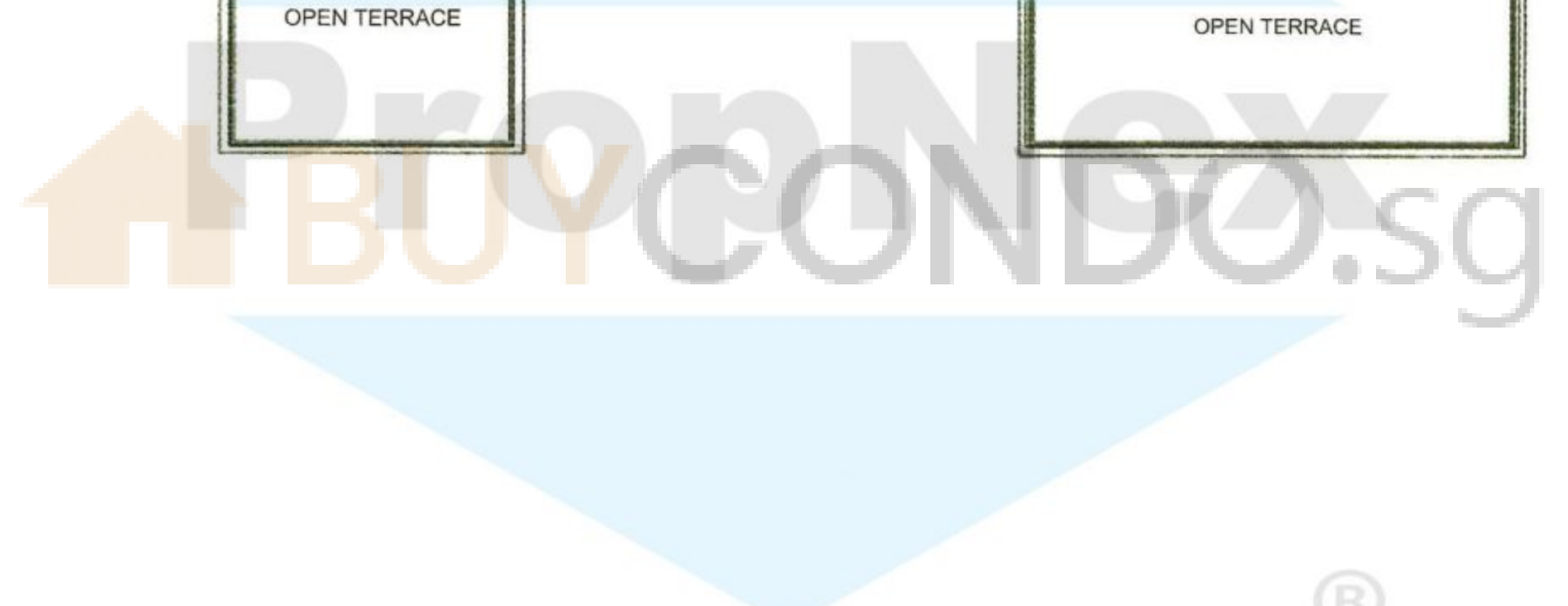
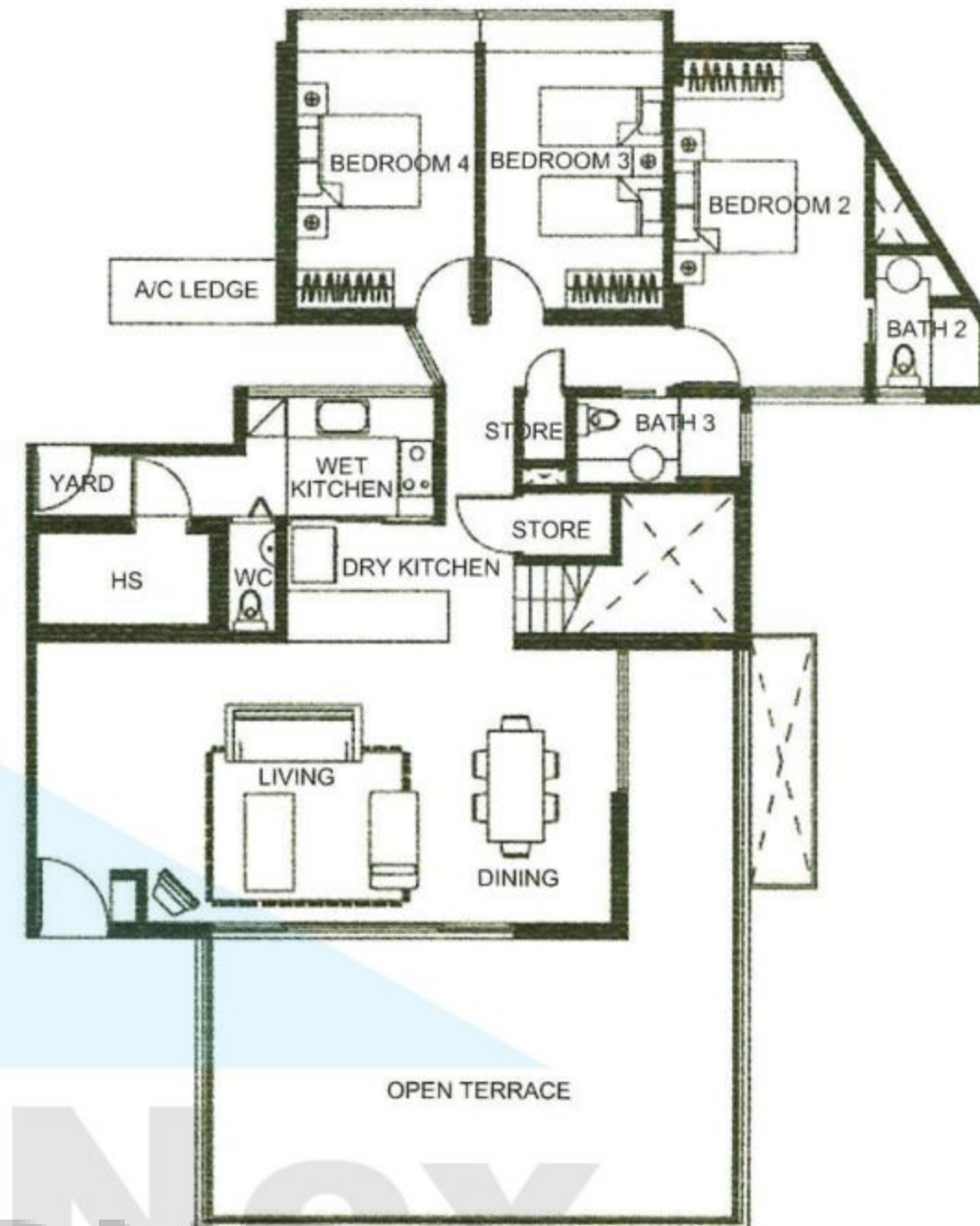
Type L3

#05-22
250 sqm (2,691 sqft)

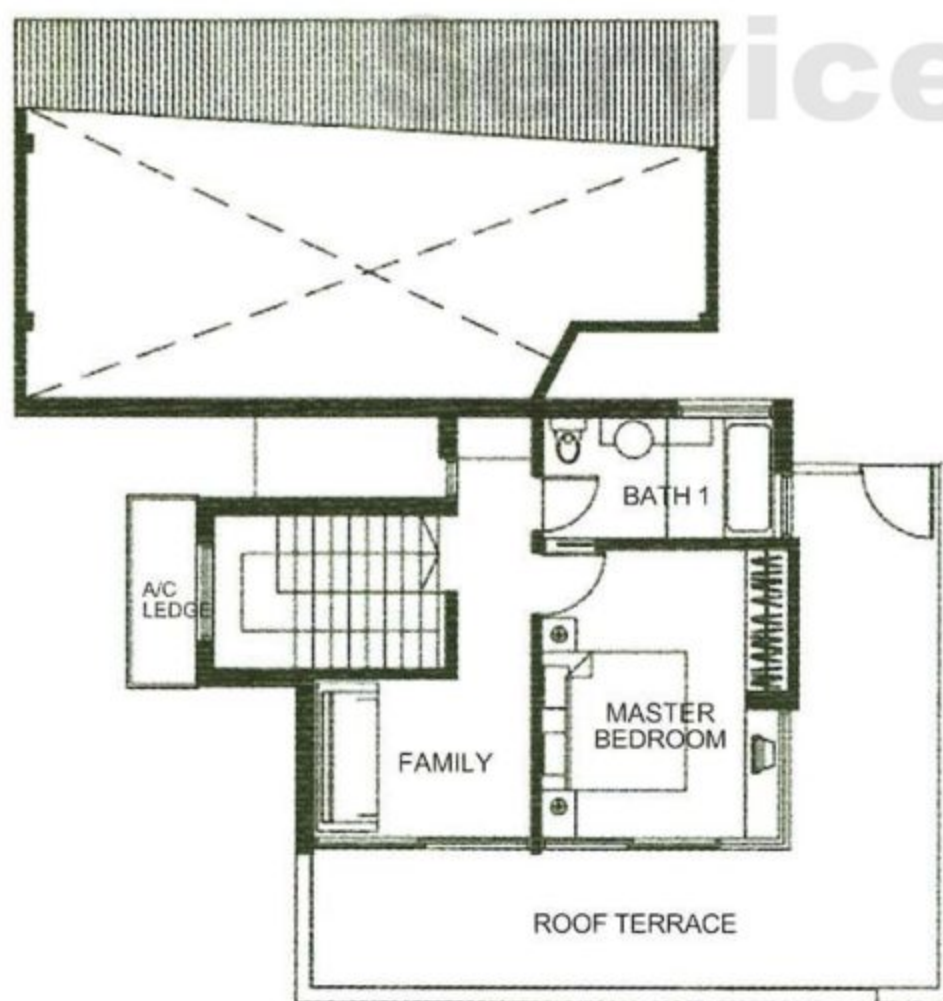
5th Storey Plan



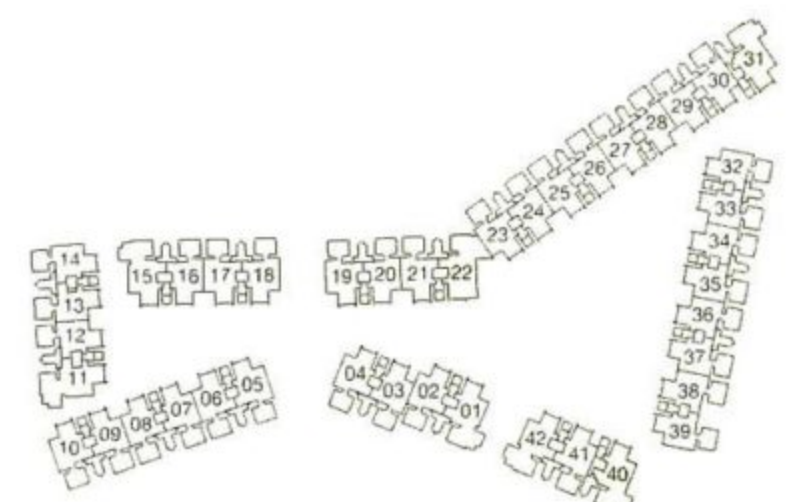
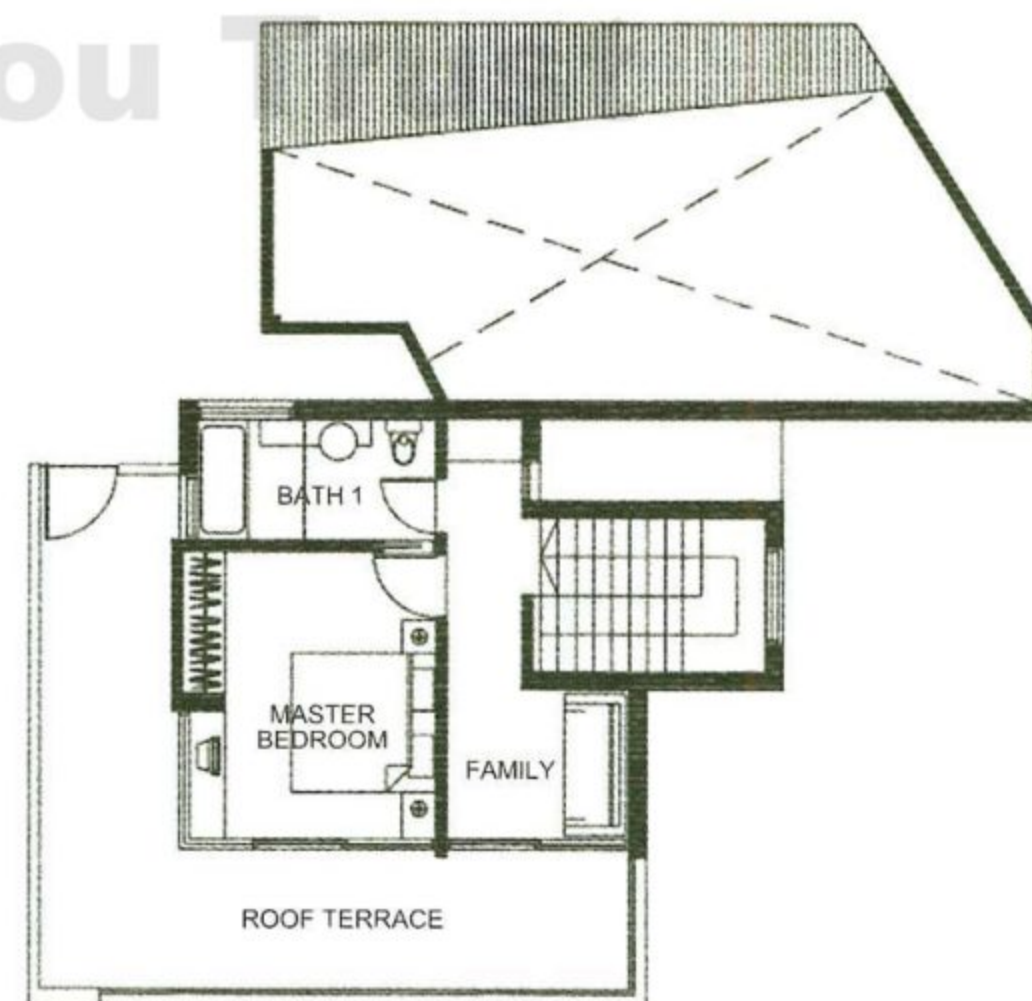
5th Storey Plan



Attic Storey Plan



Attic Storey Plan

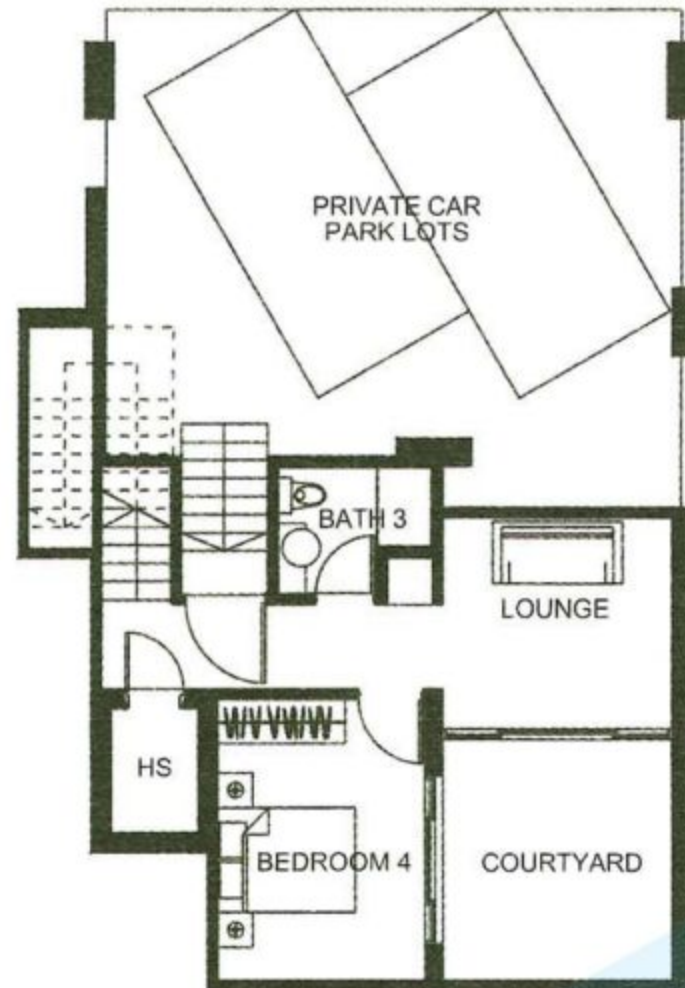


Garden Terraces

Type T1a

#01-42
266 sqm (2,863 sqft)

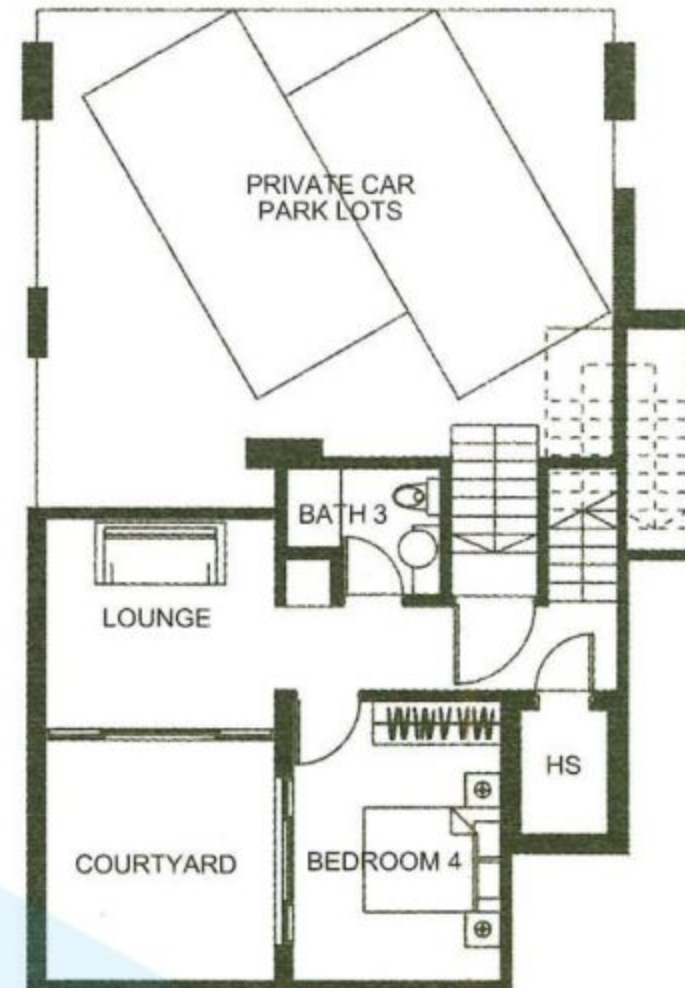
Basement



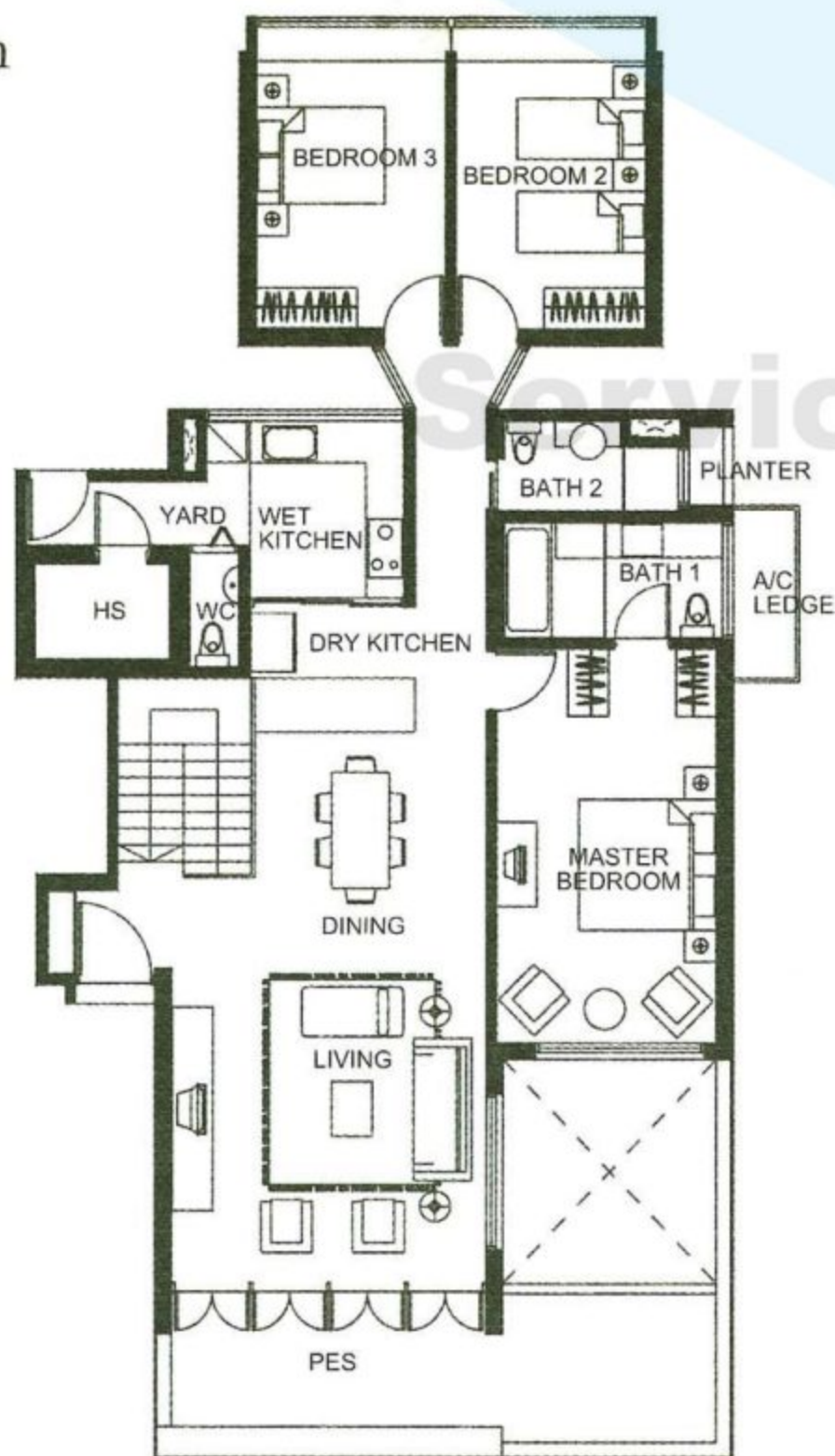
Type T1b

#01-01
266 sqm (2,863 sqft)

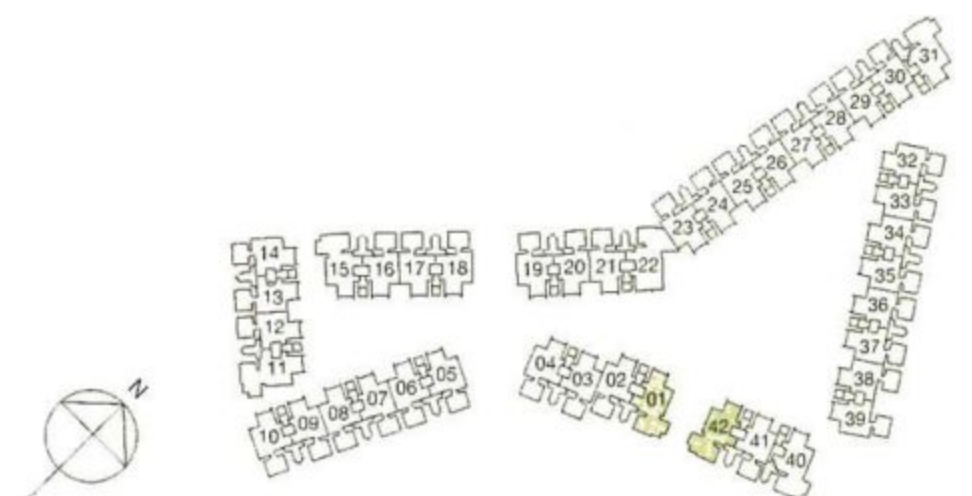
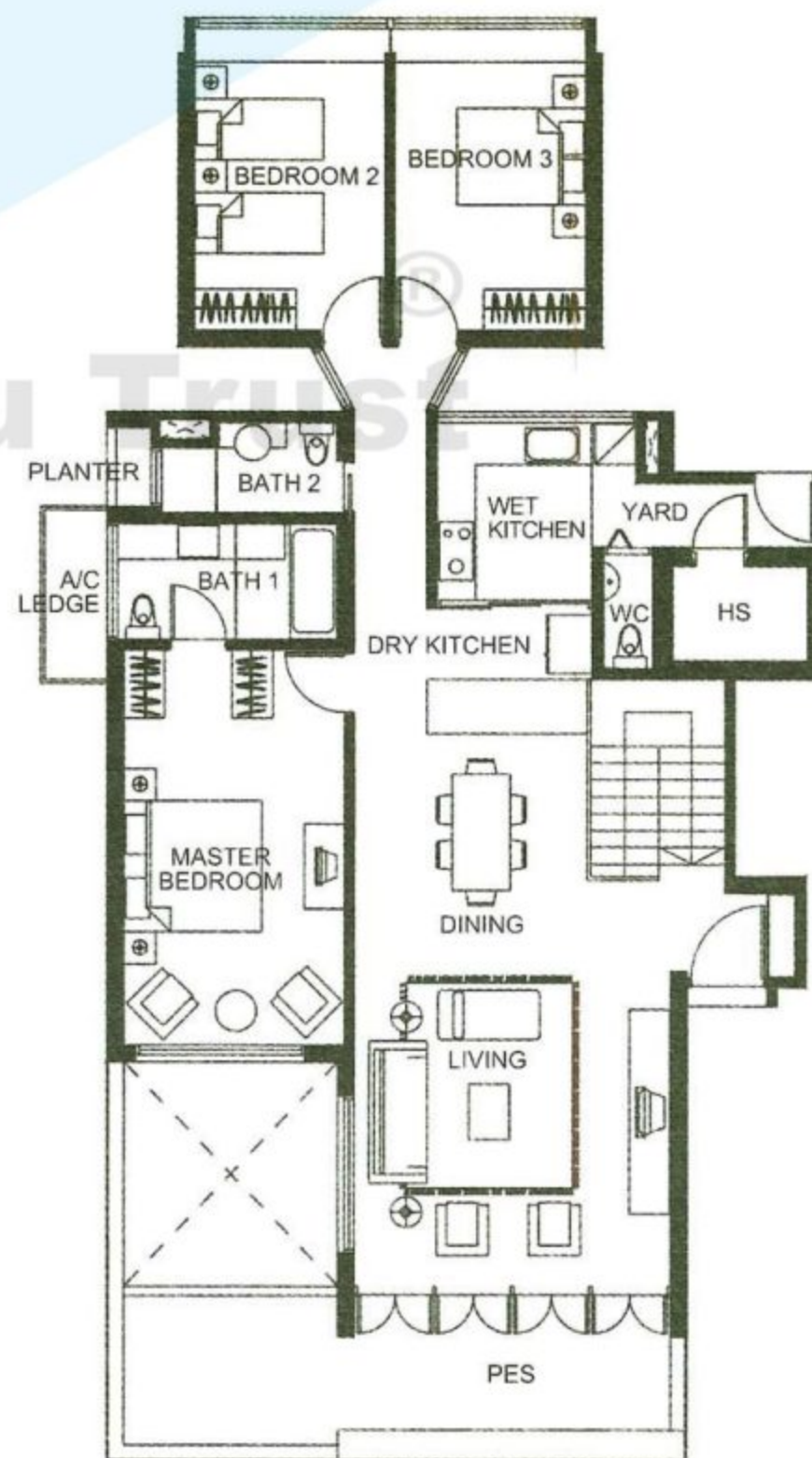
Basement



1st Storey Plan



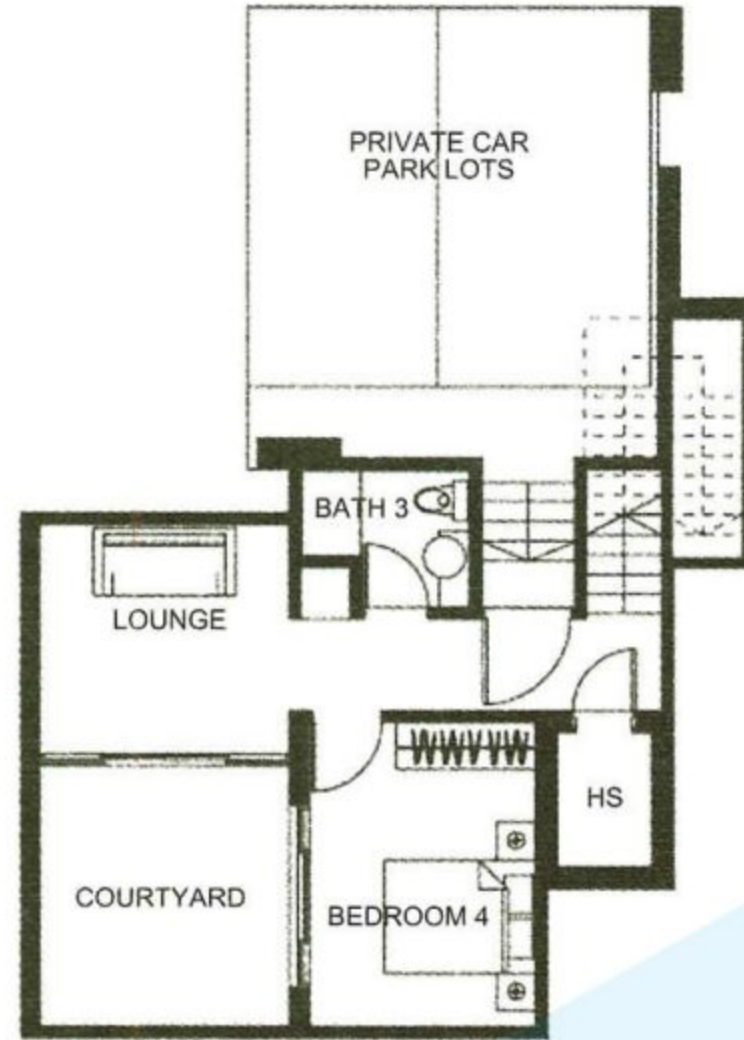
1st Storey Plan



Type T1c

#01-15
244 sqm (2,626 sqft)

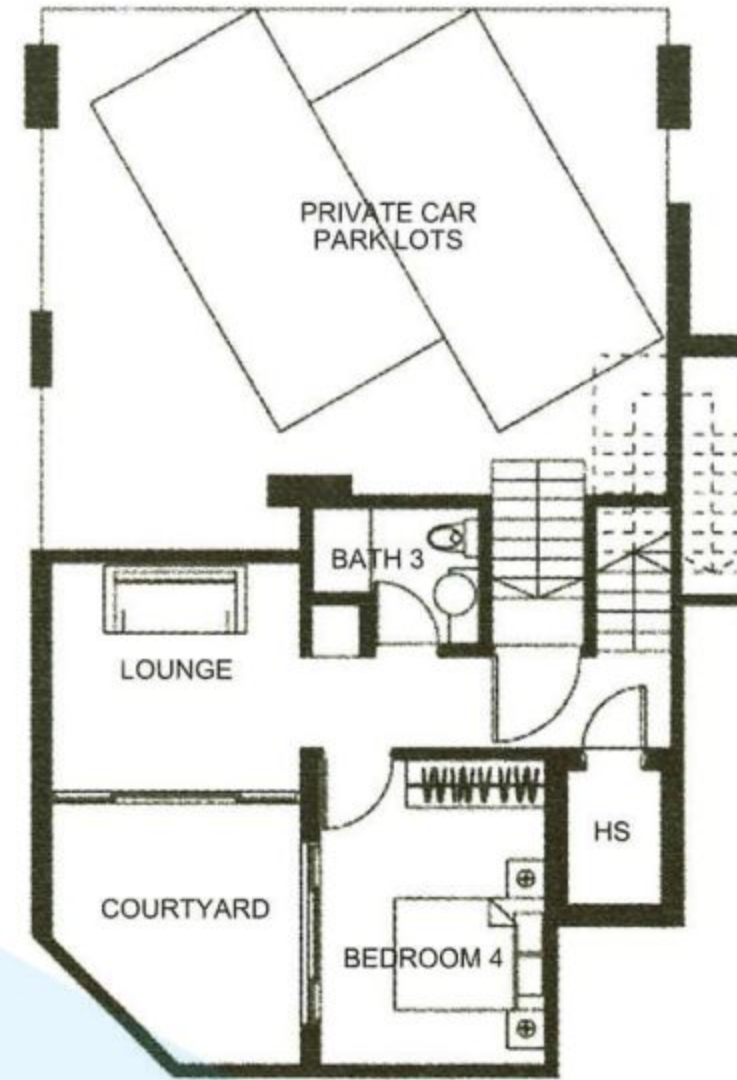
Basement



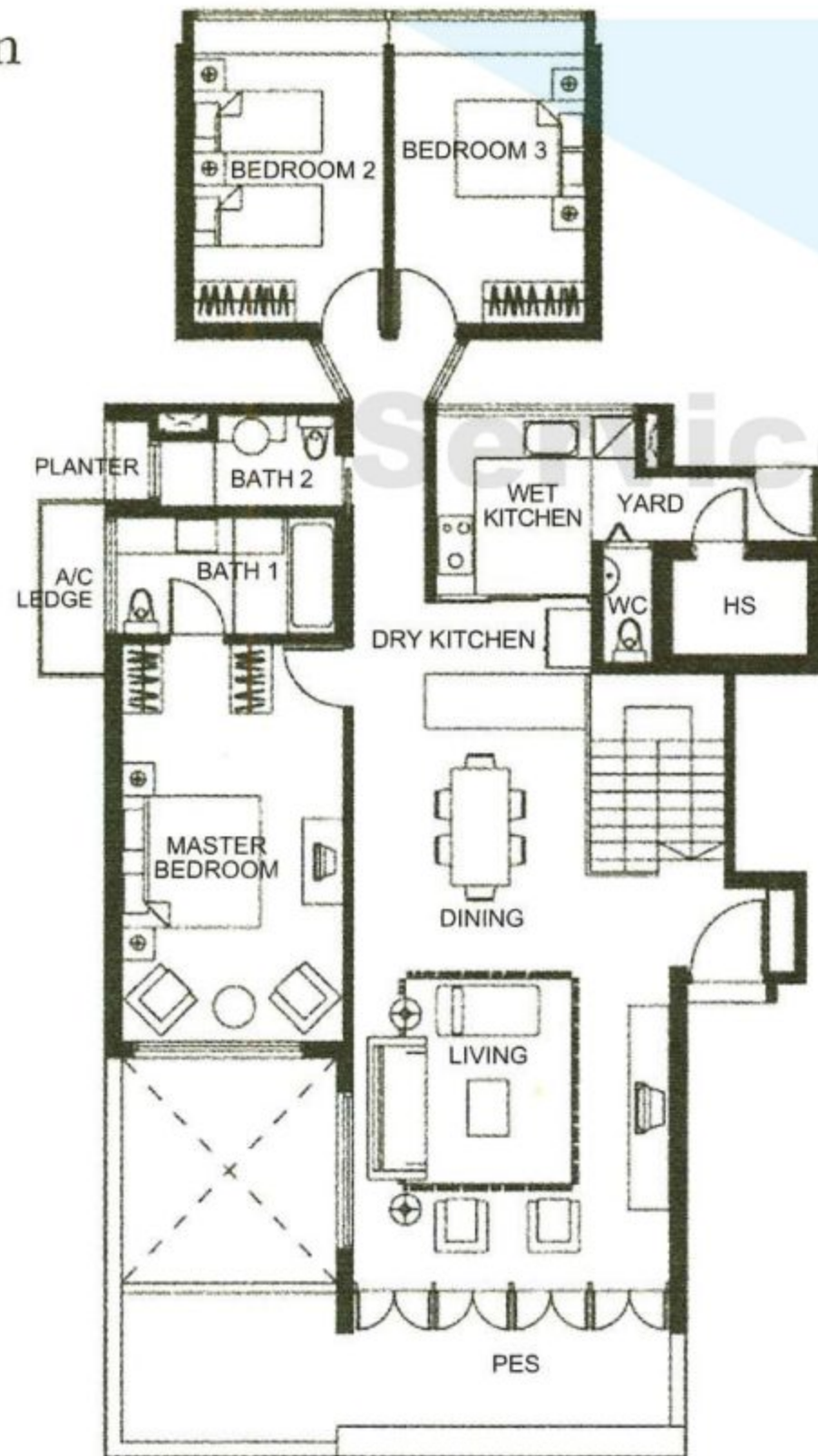
Type T2a

#01-32
256 sqm (2,756 sqft)

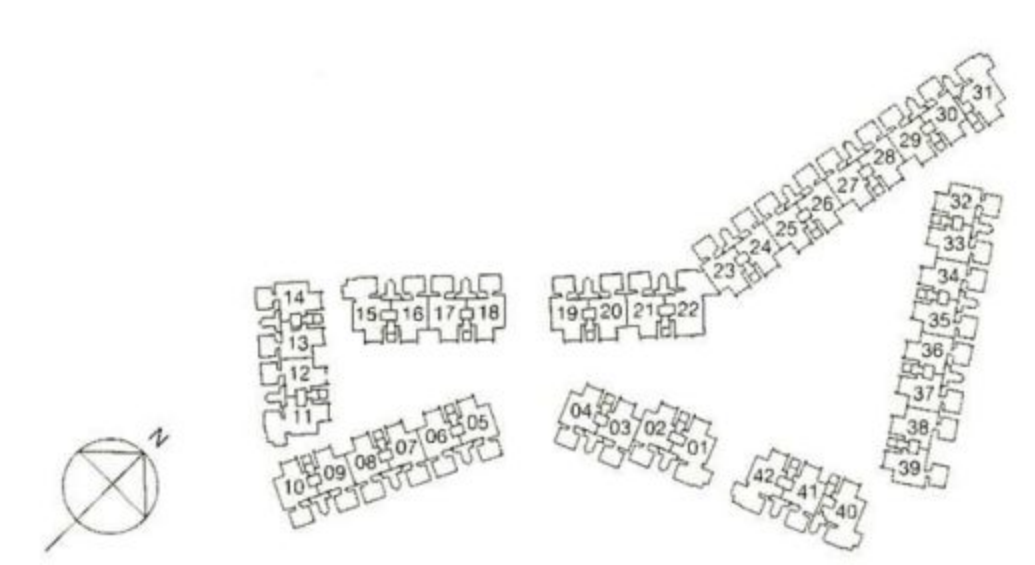
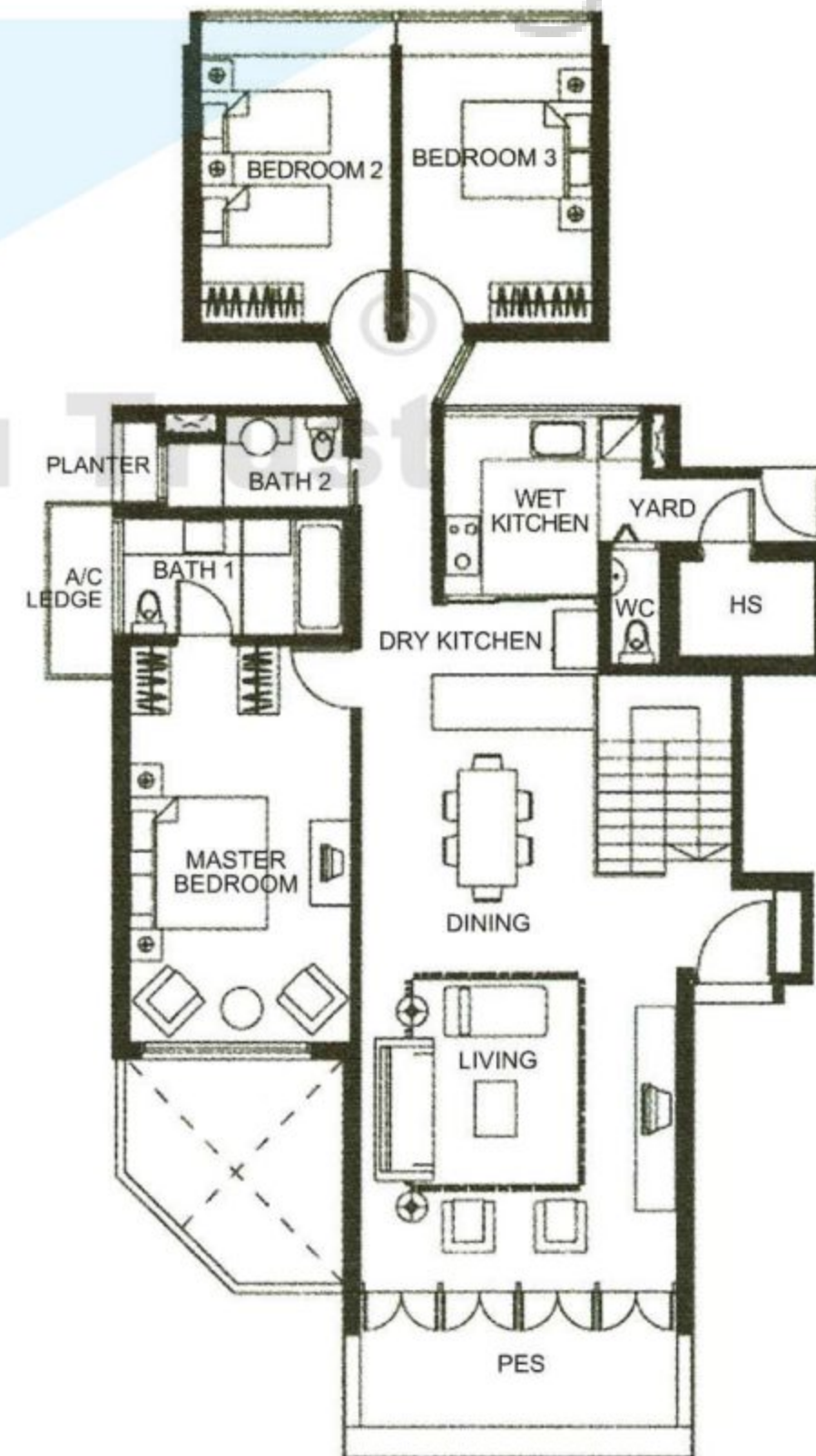
Basement



1st Storey Plan



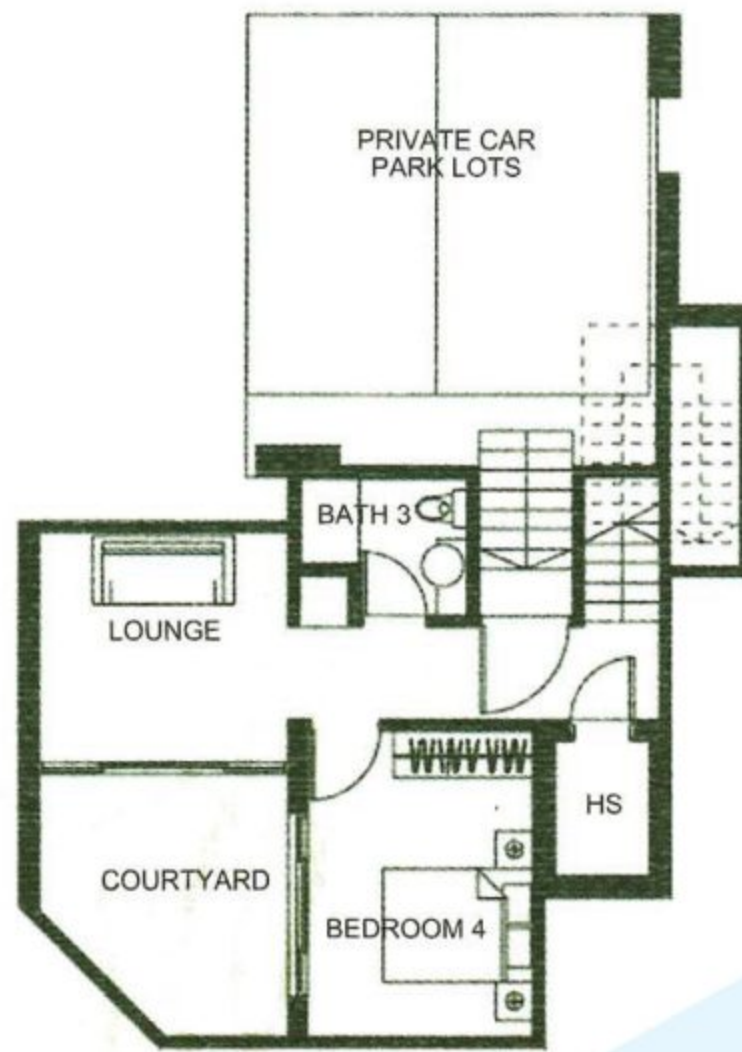
1st Storey Plan



Type T2b

#01-11
235 sqm (2,530 sqft)

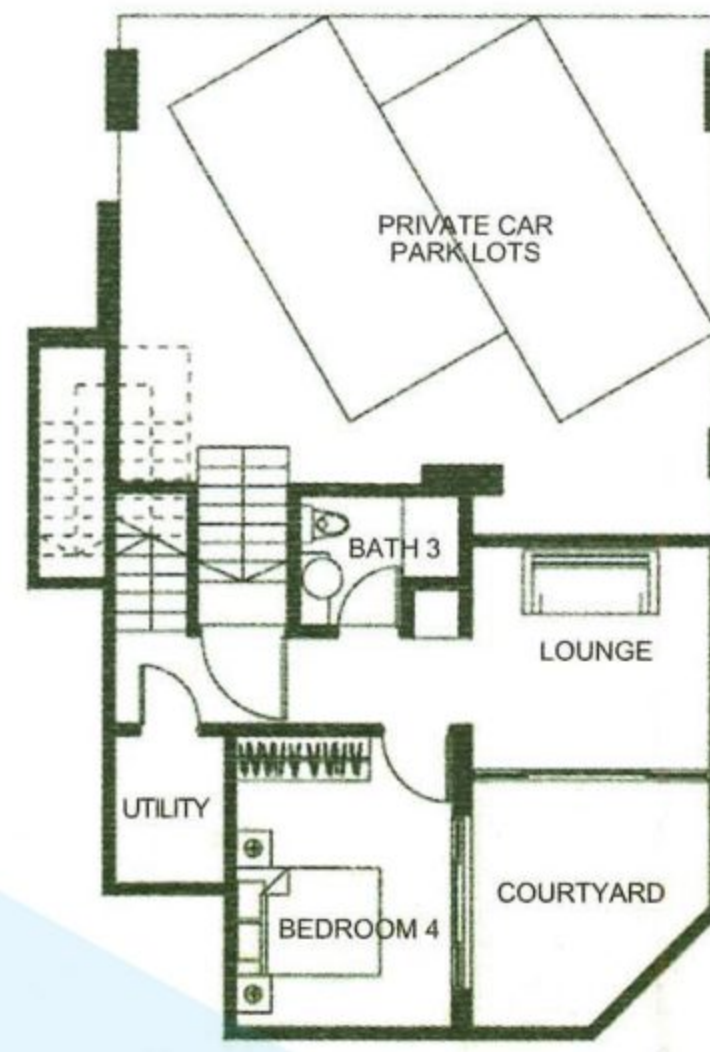
Basement



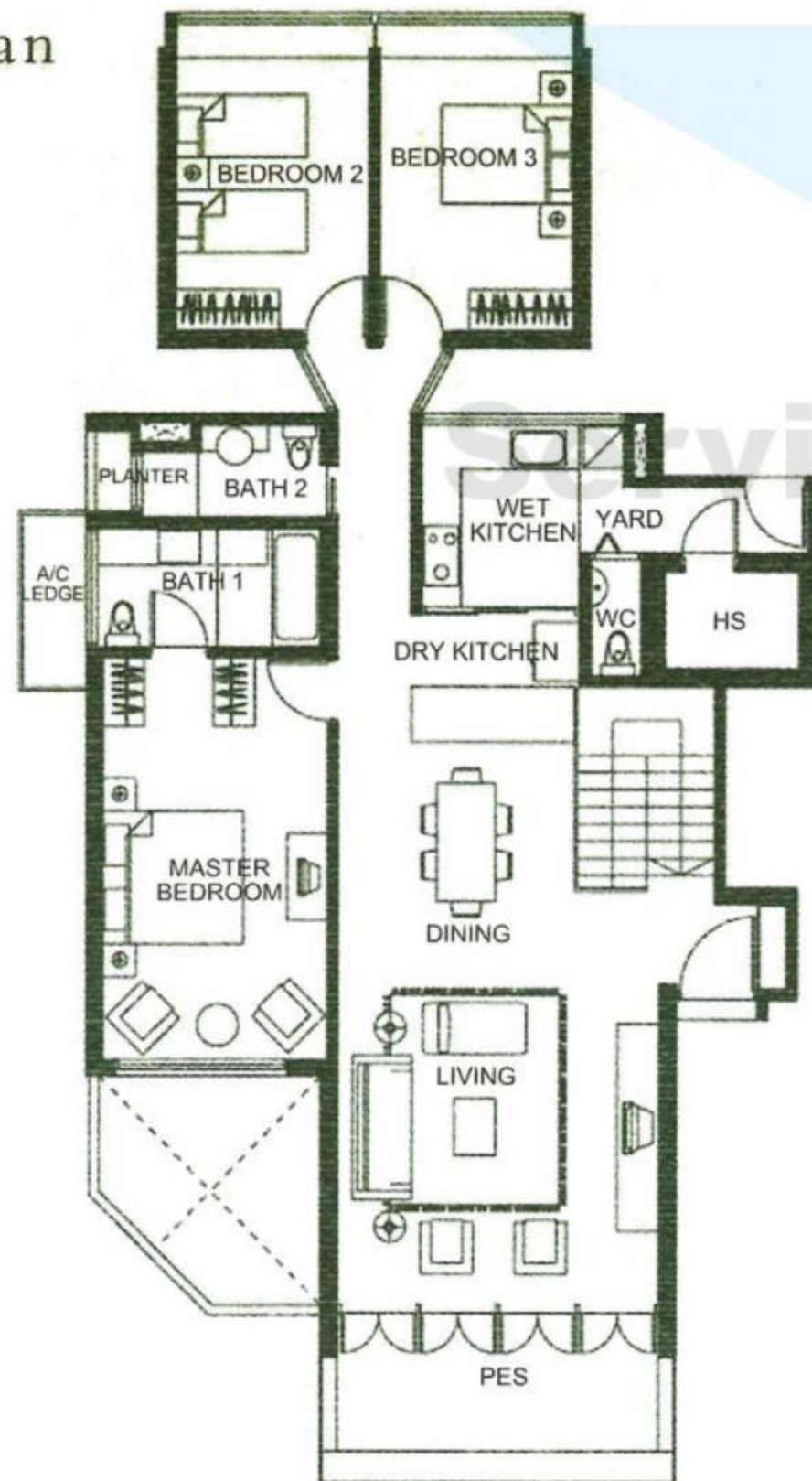
Type T2c

#01-31
257 sqm (2,766 sqft)

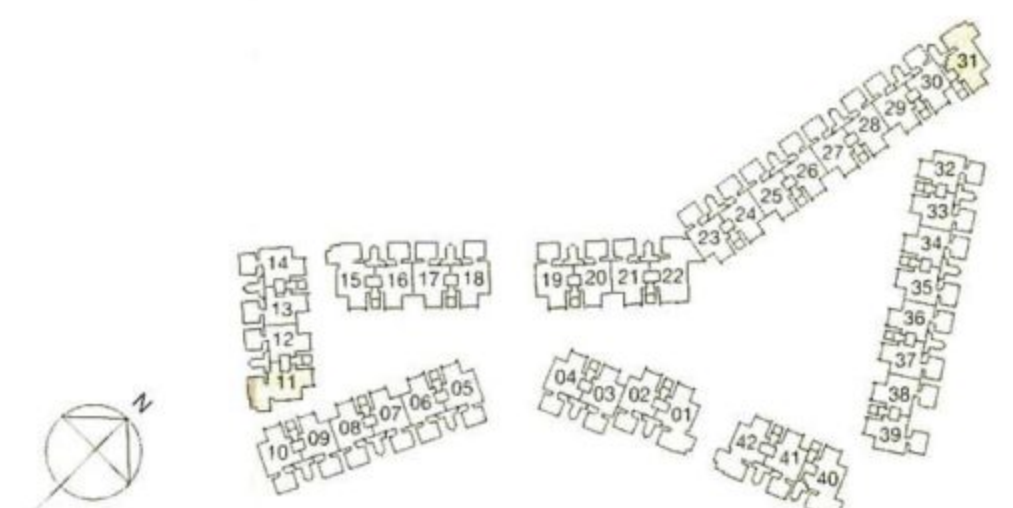
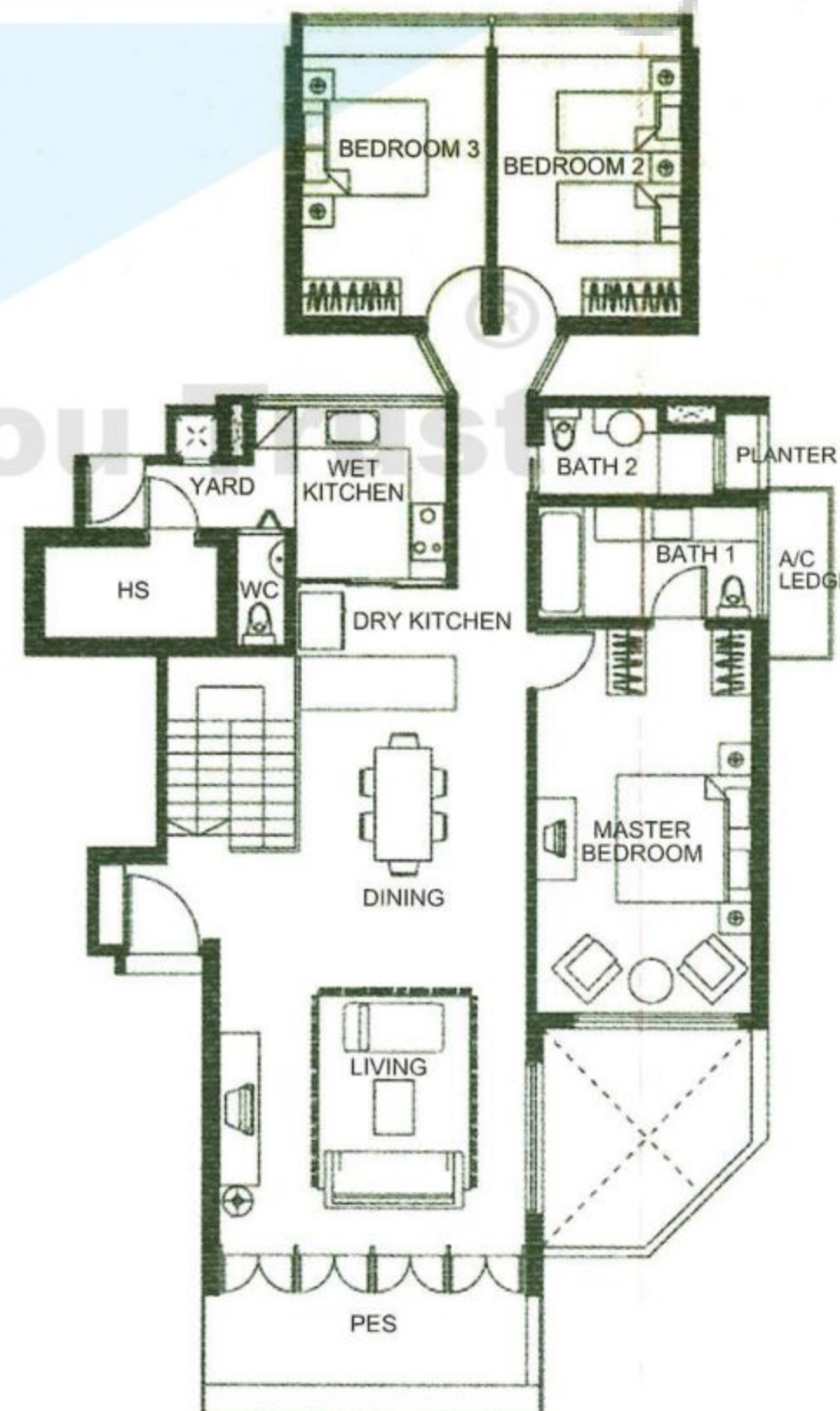
Basement



1st Storey Plan



1st Storey Plan



Type T4c/T4d/T4e

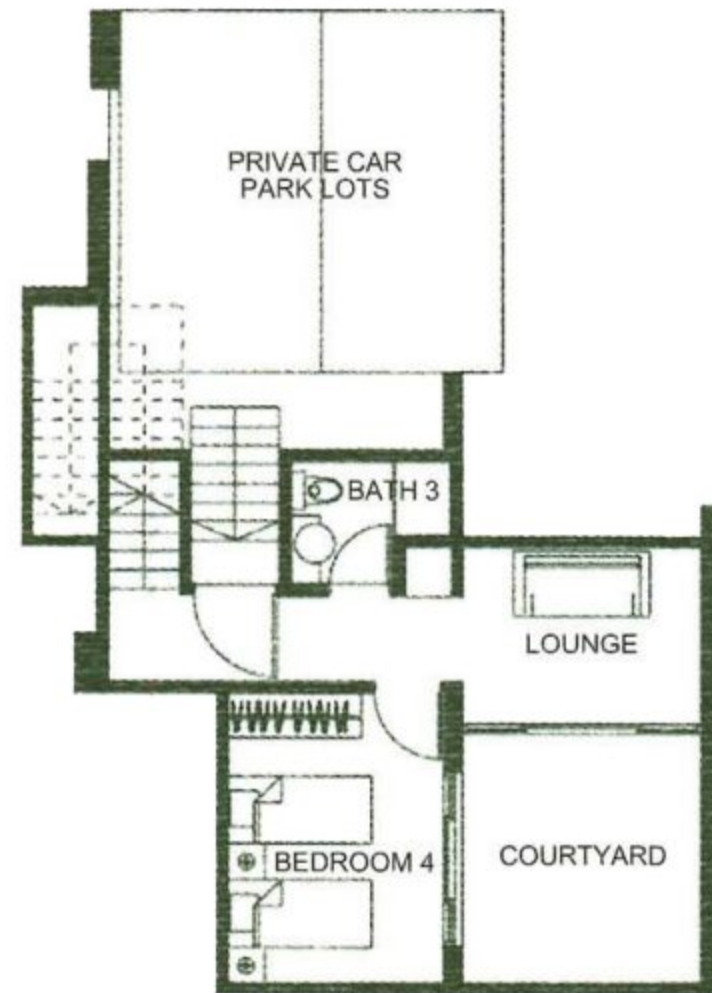
#01-12, #01-13/#01-07, #01-16/#01-17
317 sqm (3,412 sqft)

Type T4f

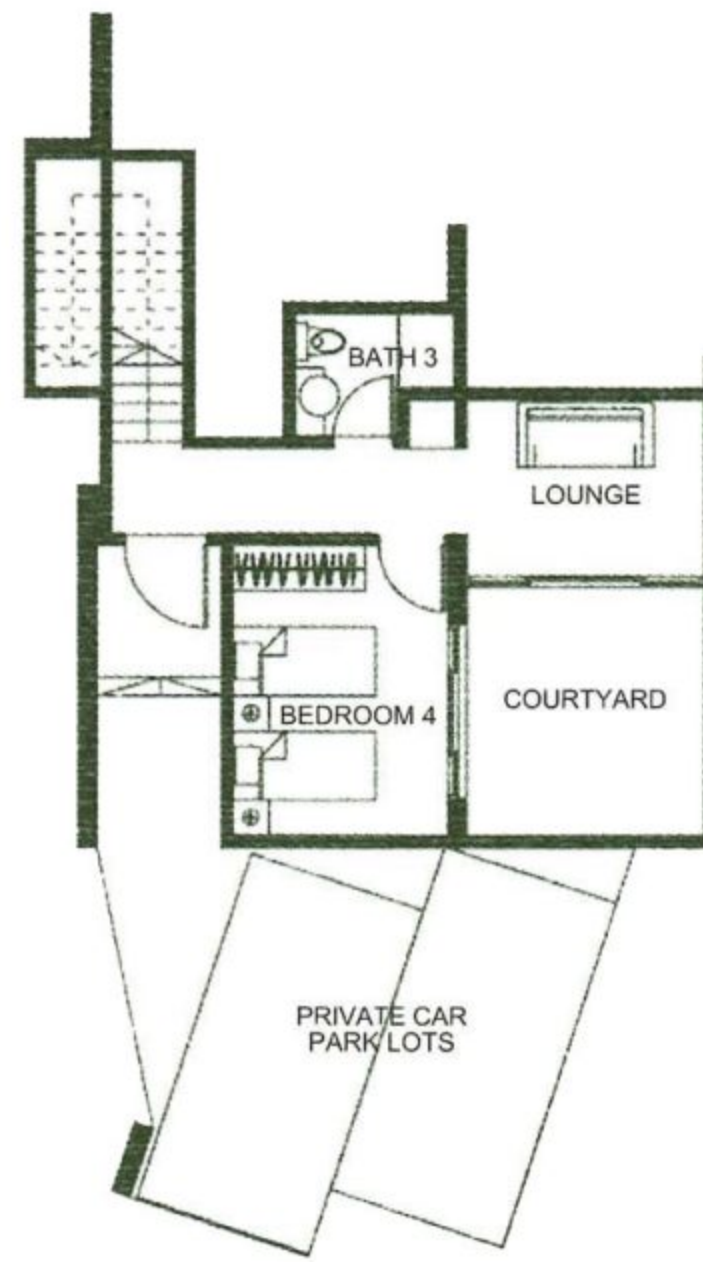
#01-06
322 sqm (3,466 sqft)

Basement Plan

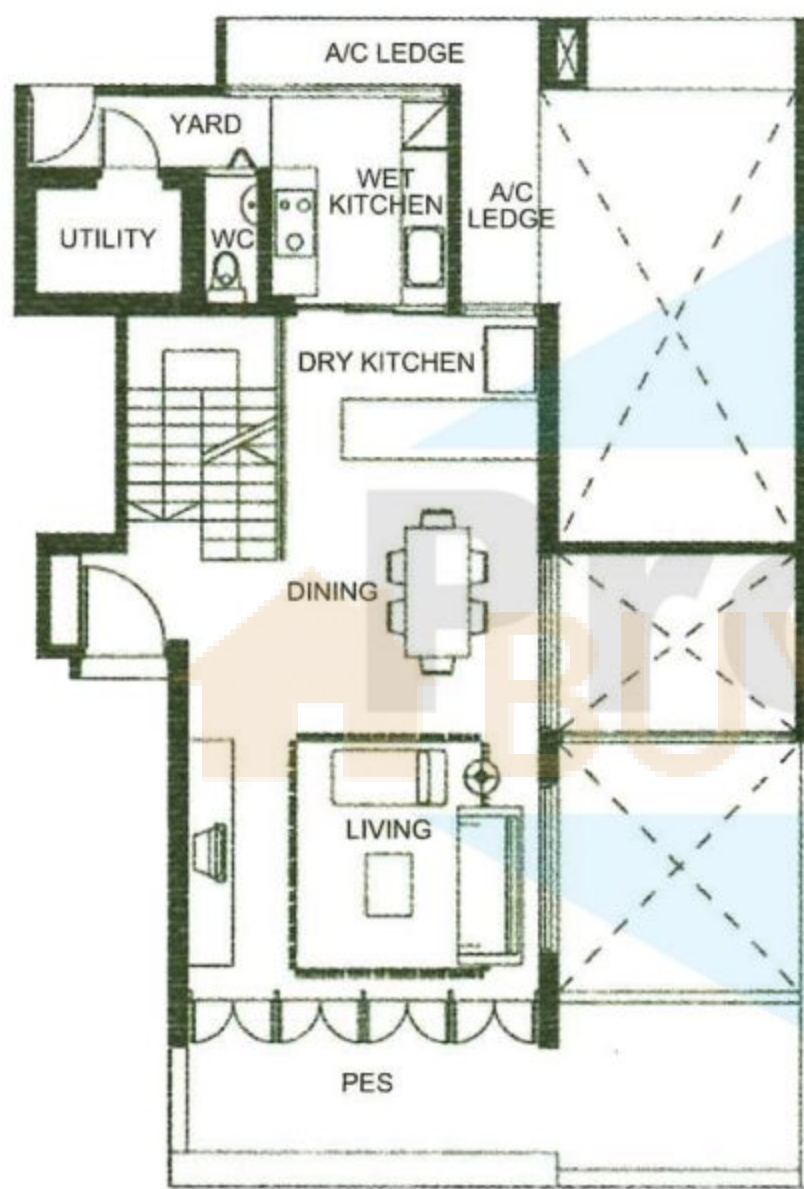
*Variation in number of steps at basement entrance



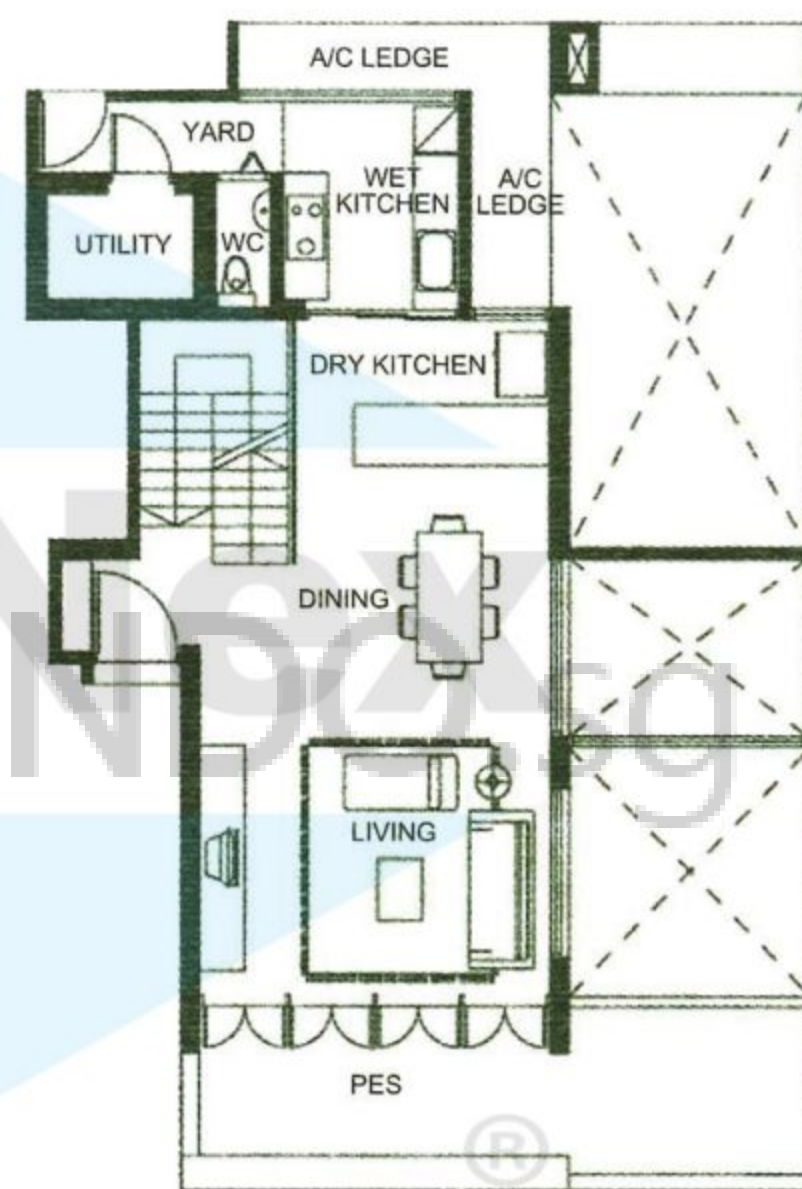
Basement Plan



1st Storey Plan

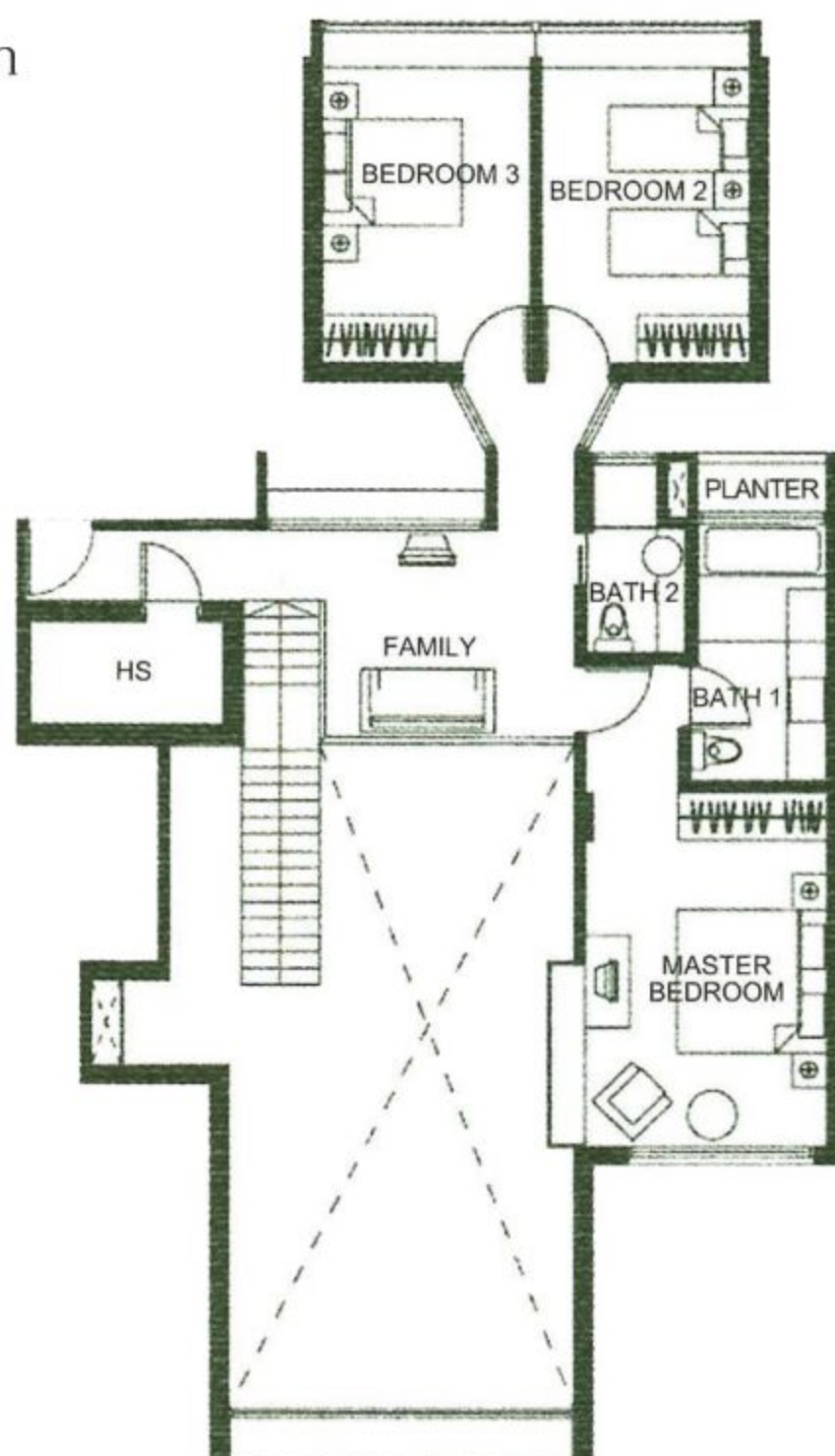


1st Storey Plan

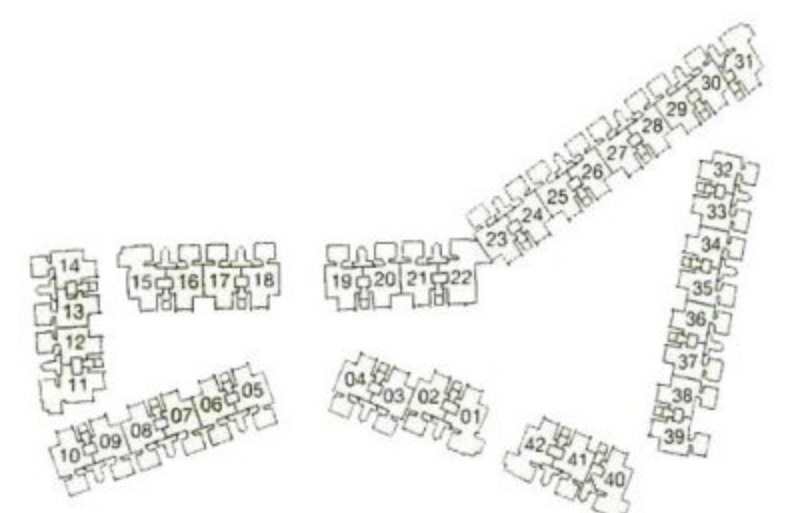
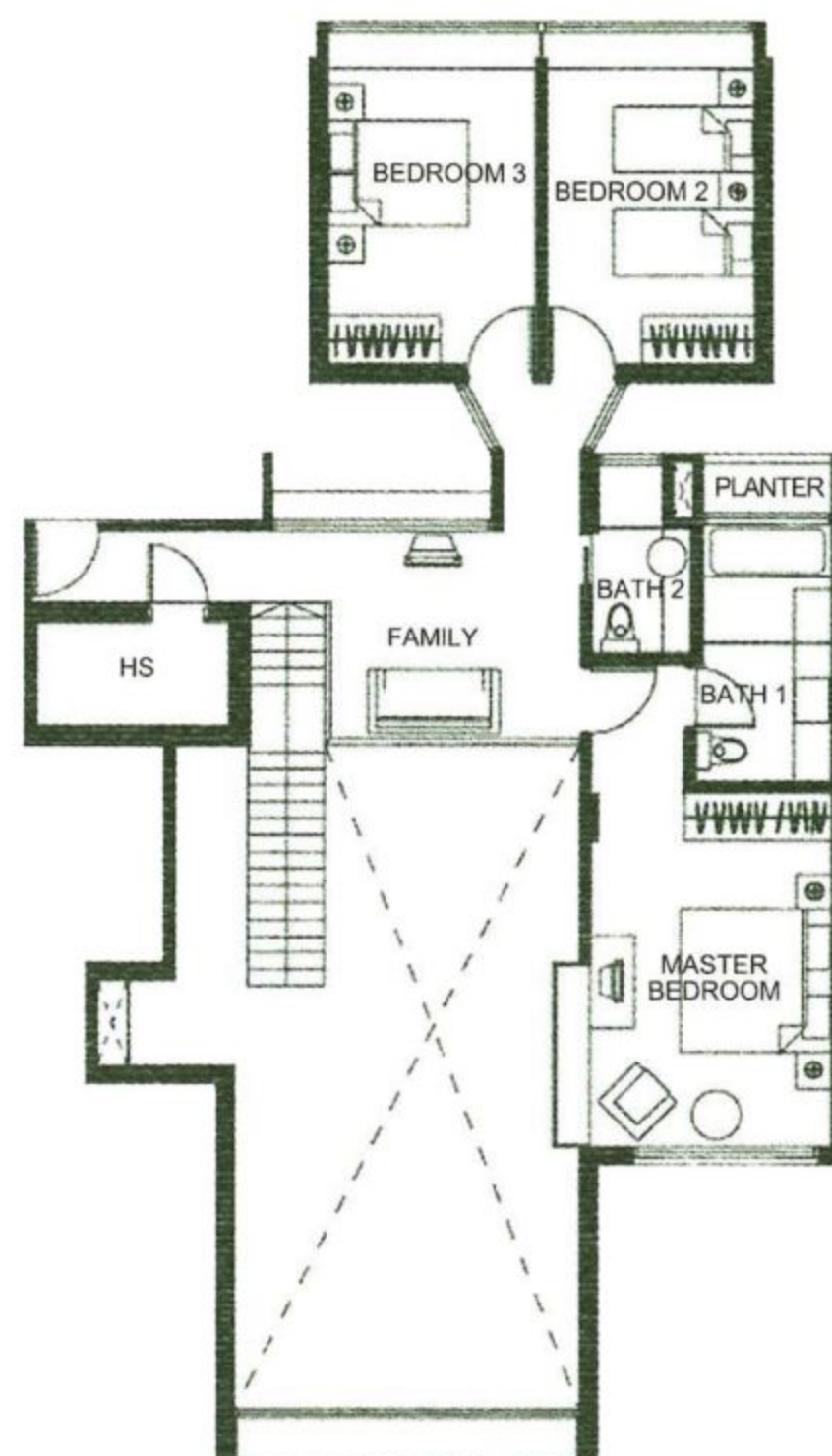


Service You Trust

2nd Storey Plan



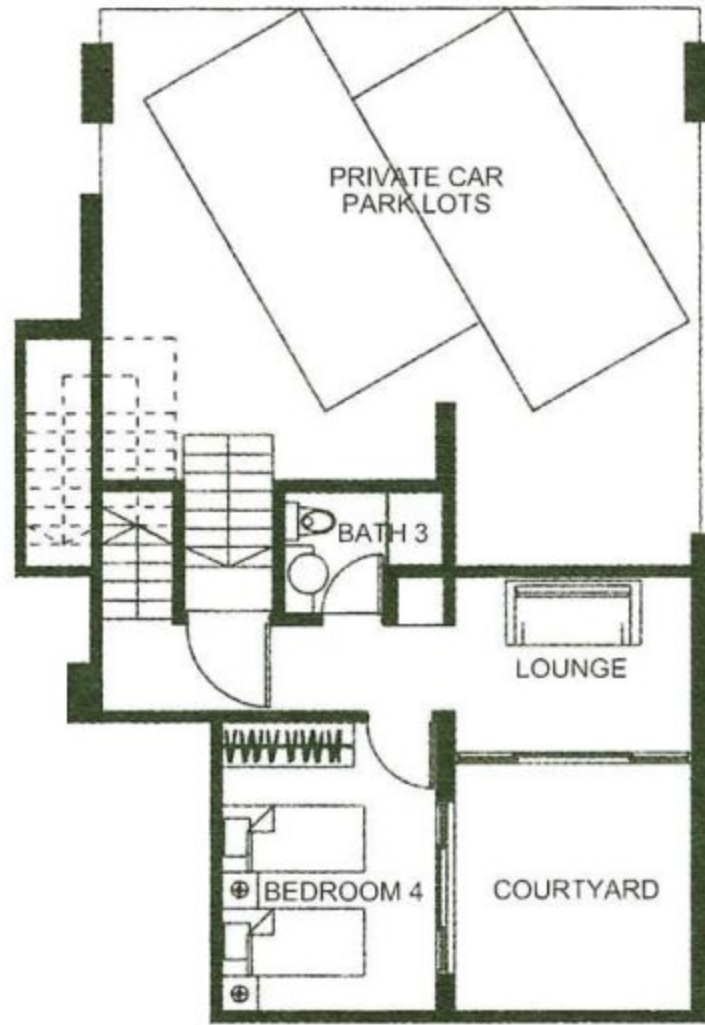
2nd Storey Plan



Type T5a

#01-02
341 sqm (3,671 sqft)

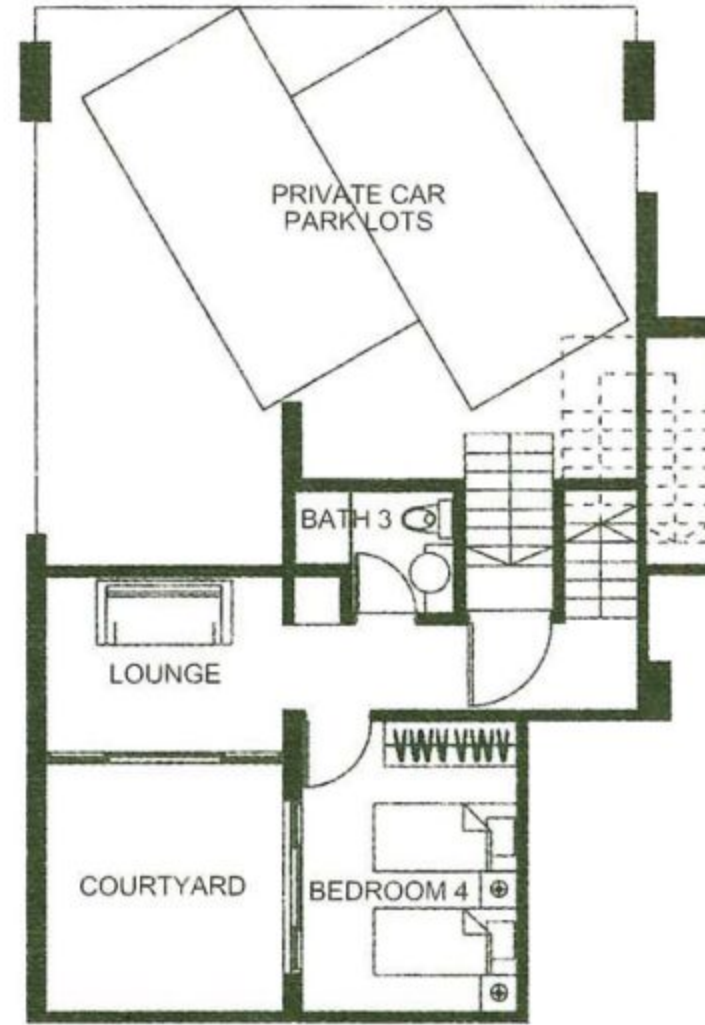
Basement Plan



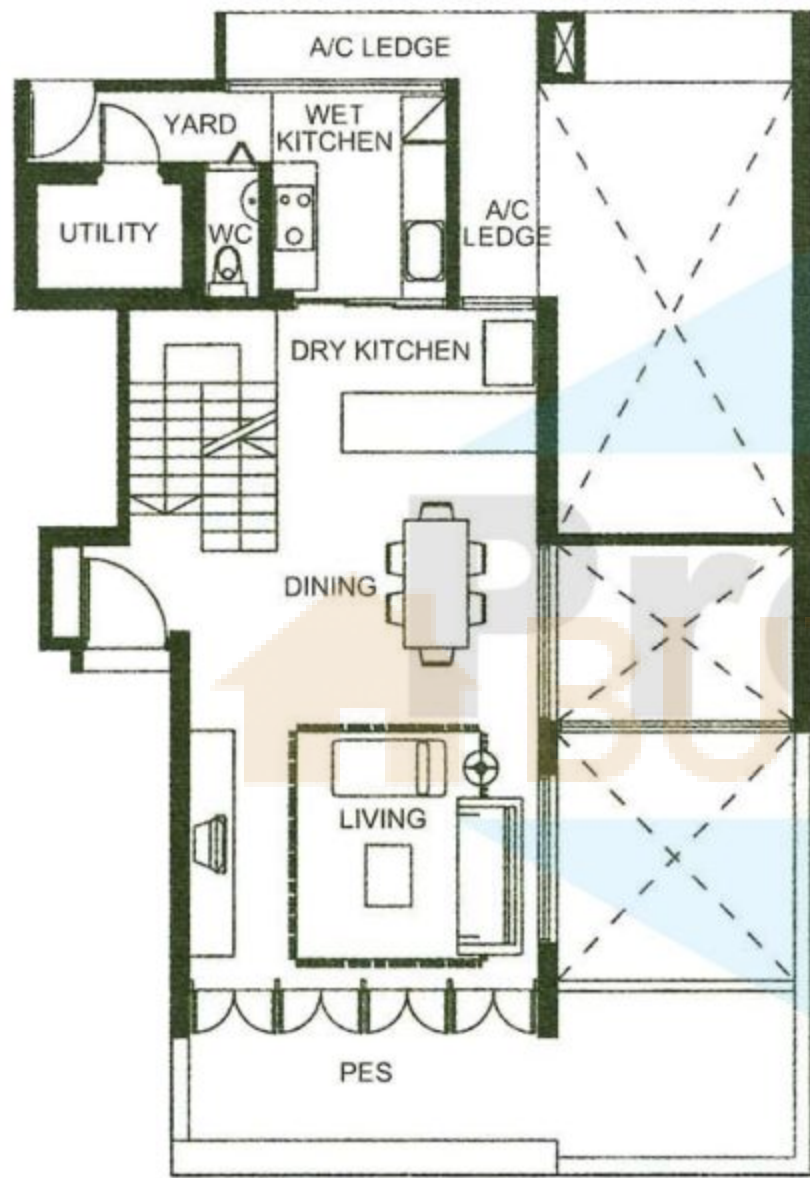
Type T5b

#01-23
341 sqm (3,671 sqft)

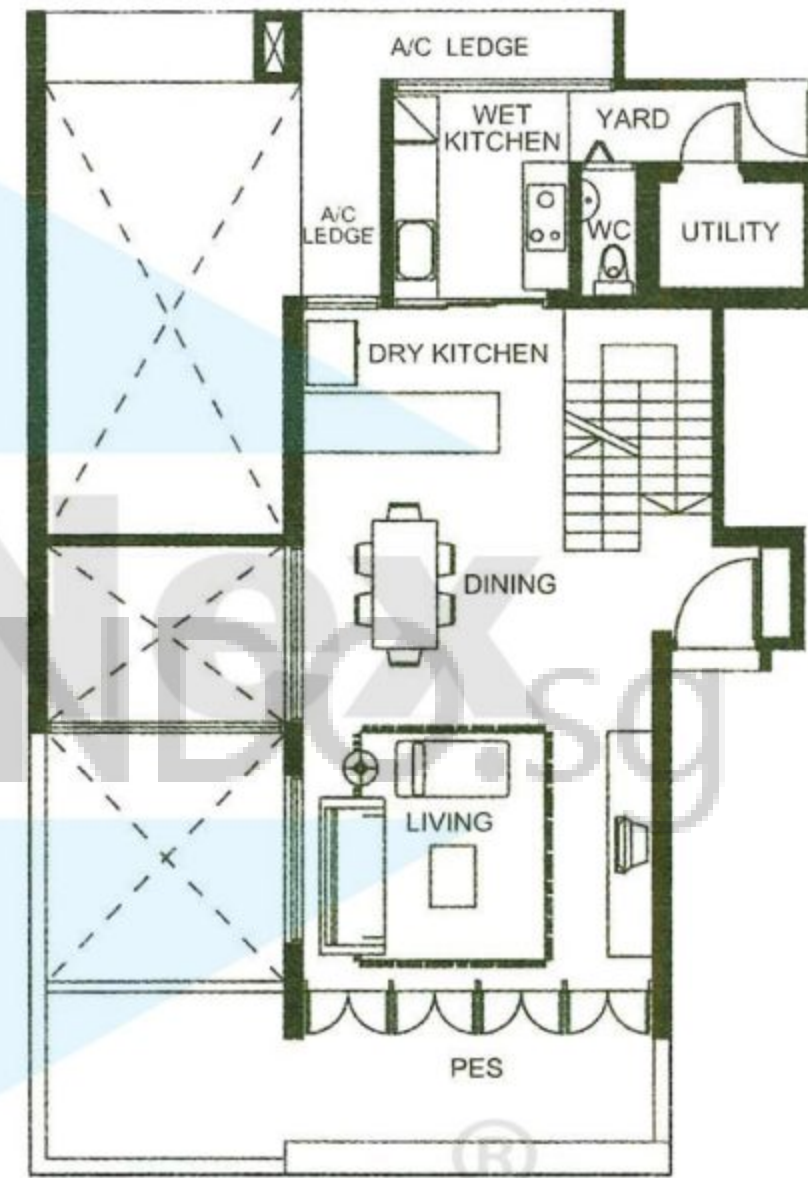
Basement Plan



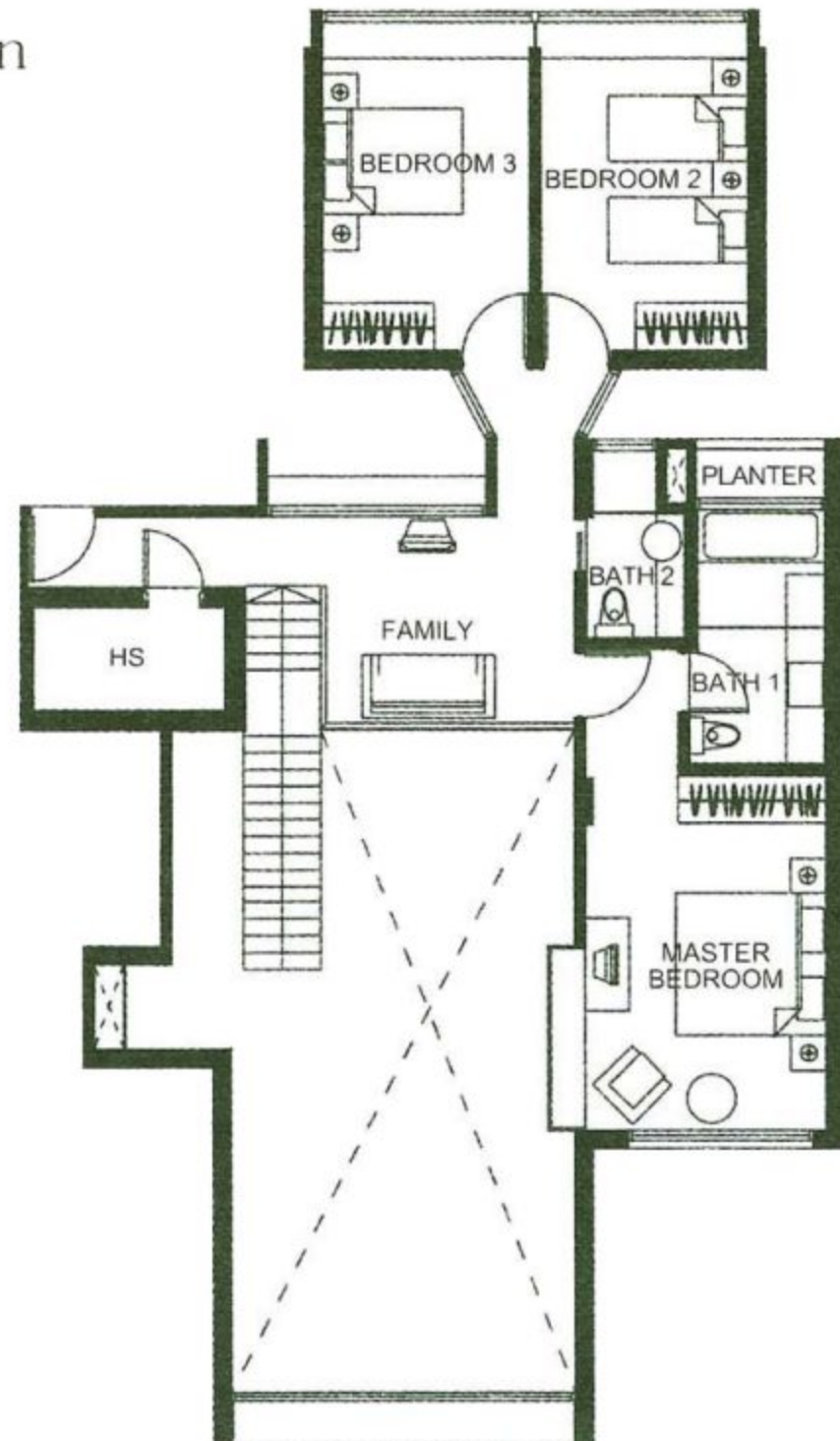
1st Storey Plan



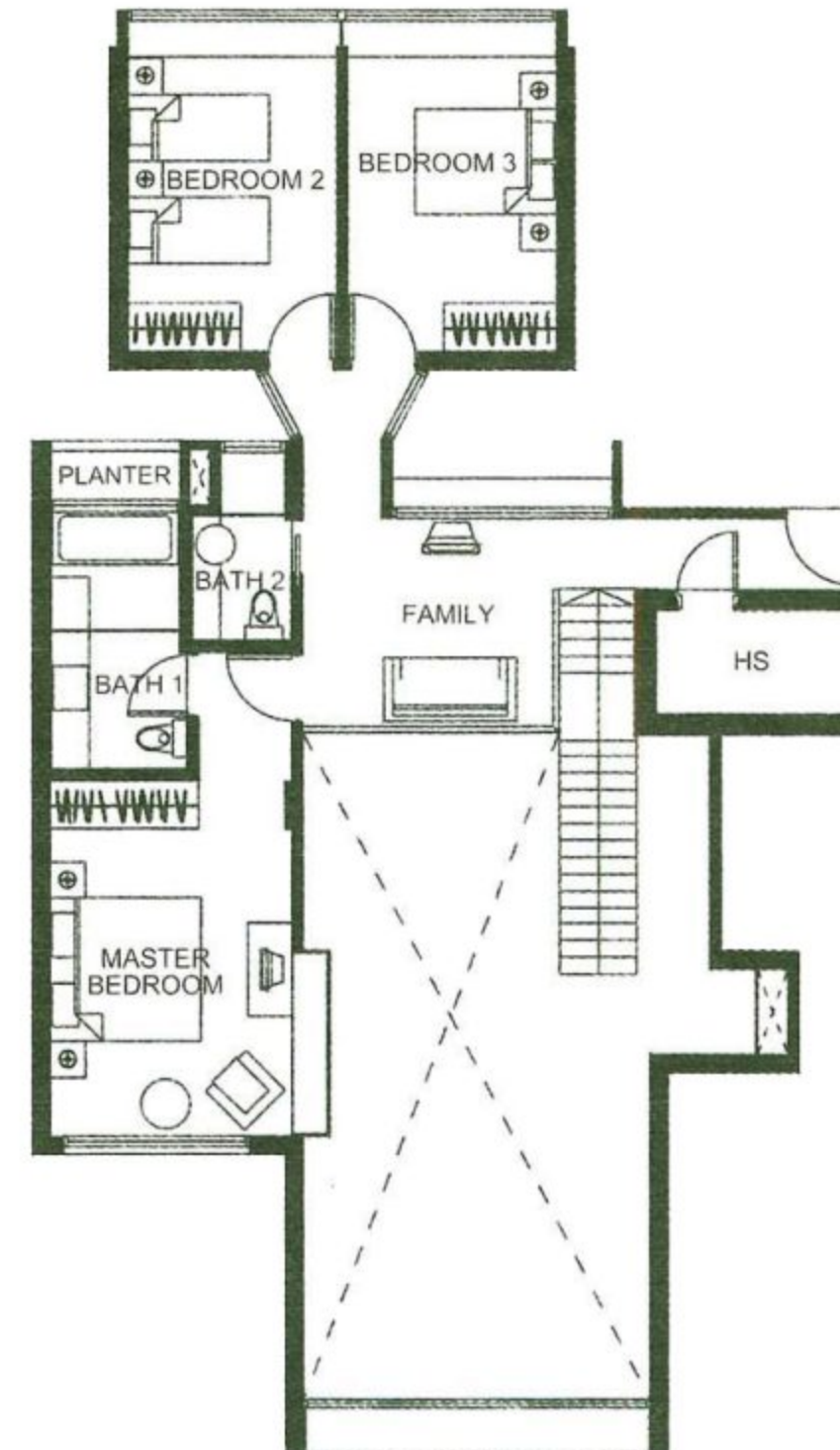
1st Storey Plan



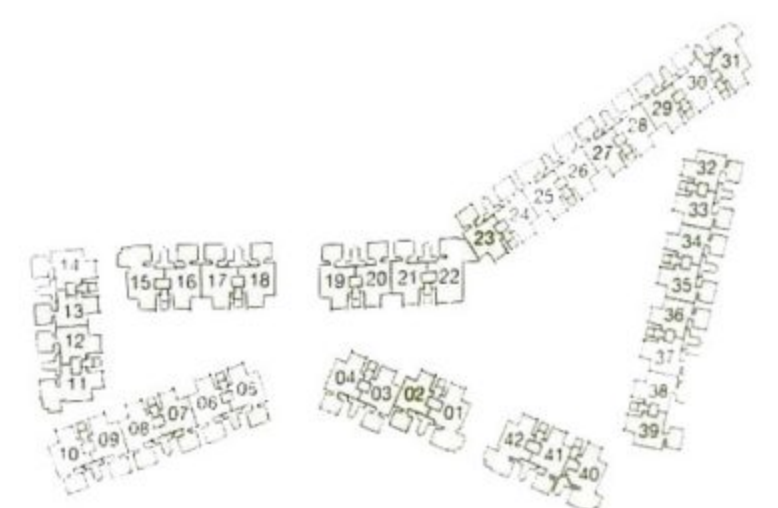
2nd Storey Plan



2nd Storey Plan



The plans are subject to change as may be required or approved by the relevant authorities. These are not drawn to scale and are for the purpose of a visual presentation of the different layouts that are available. Areas are estimates only and are subject to final survey.

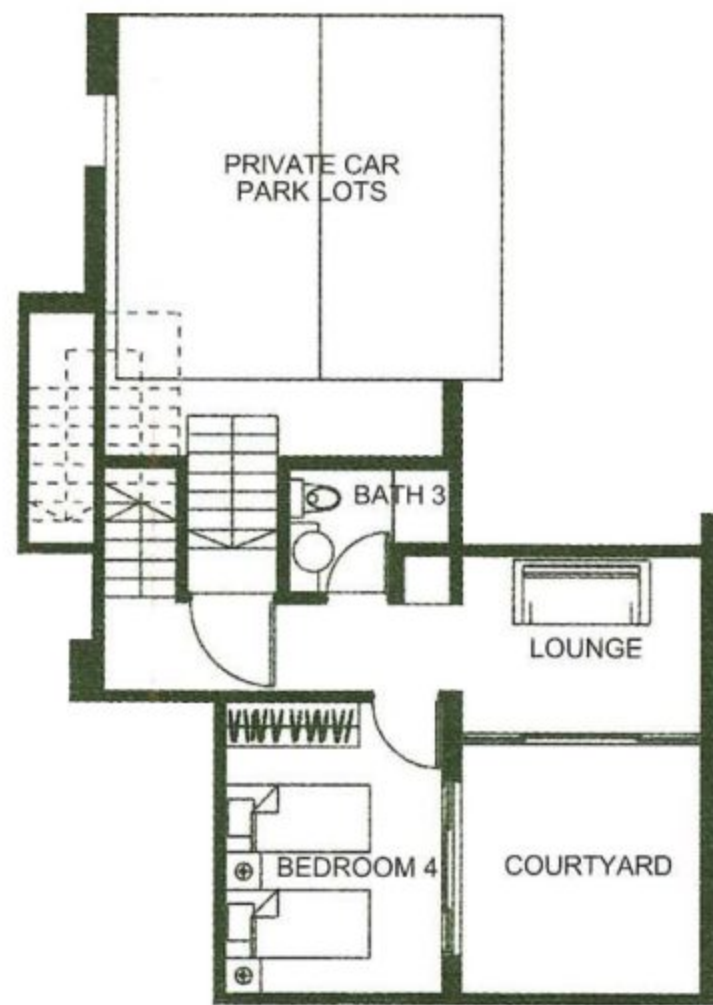


Type T5c/T5d

#01-10, #01-14/#01-18
317 sqm (3.412 sqft)

Basement Plan

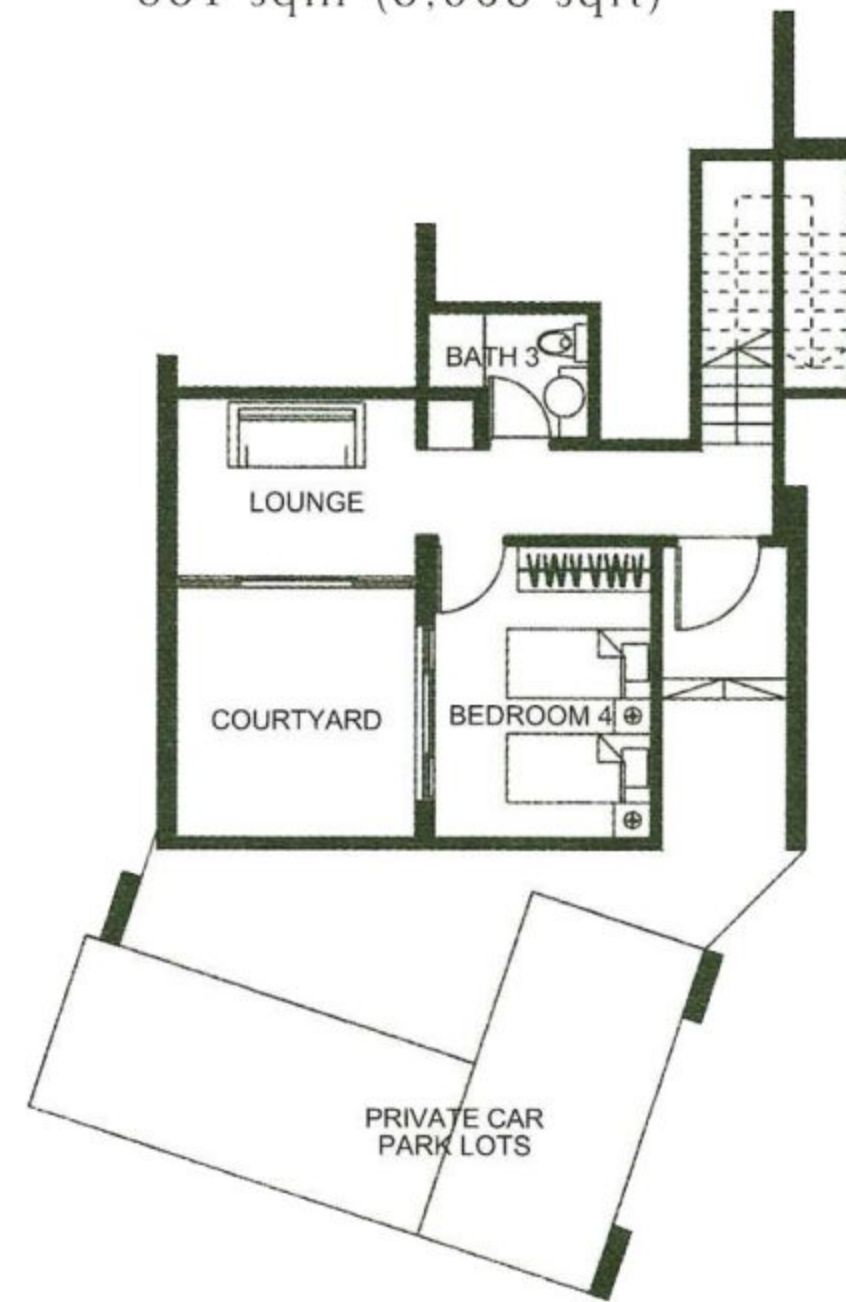
*Variation in number of steps at basement entrance



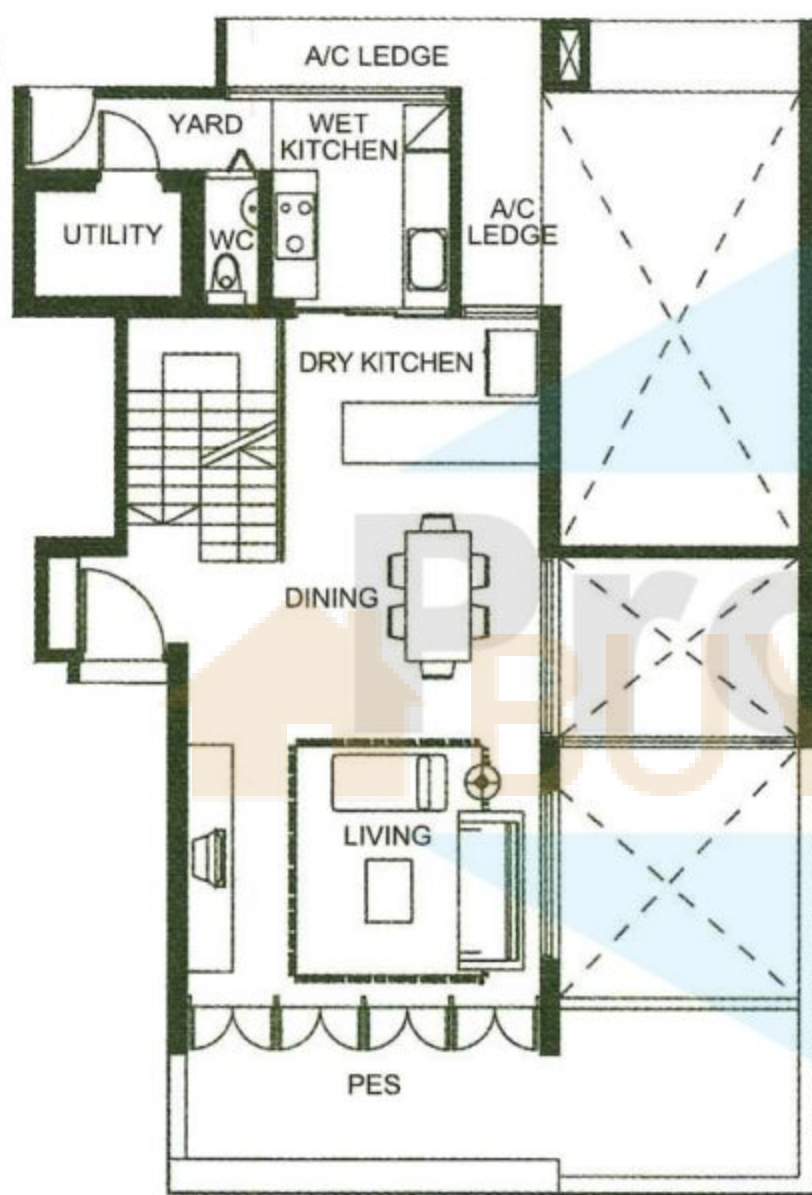
Type T5e

#01-05
331 sqm (3.563 sqft)

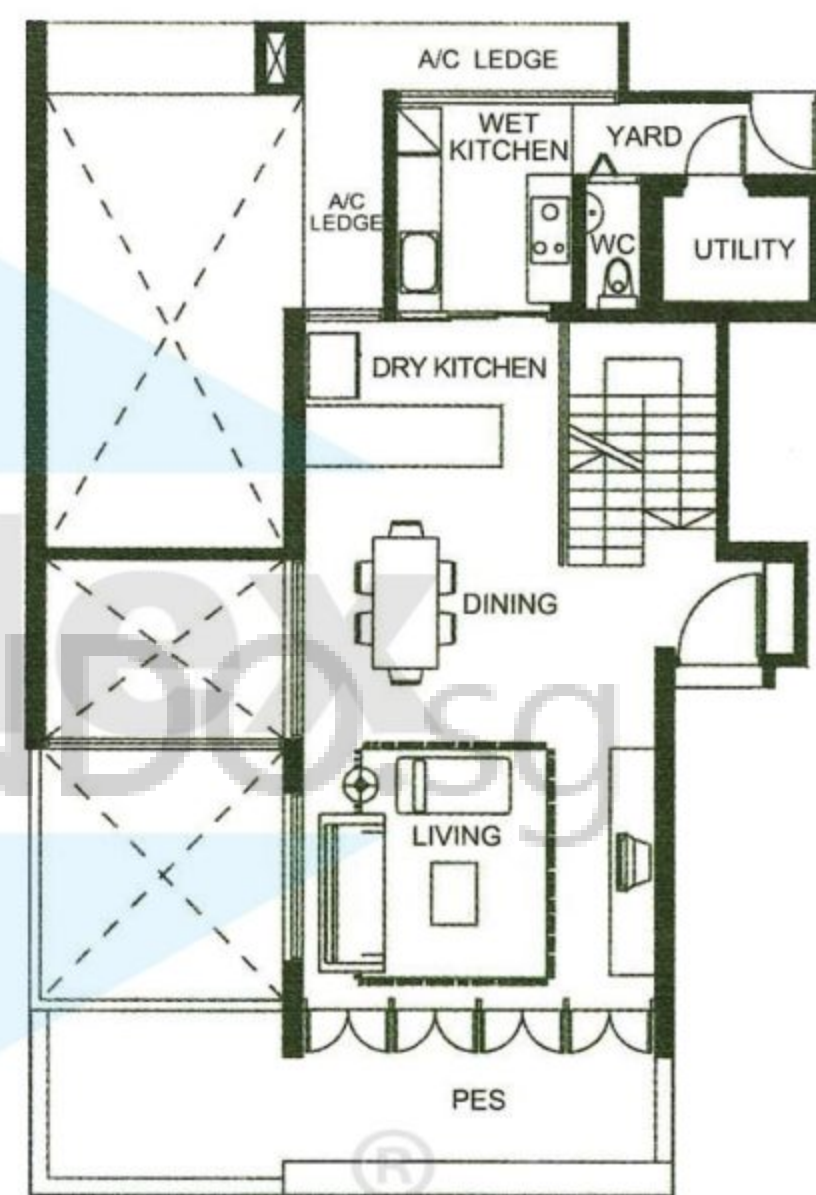
Basement Plan



1st Storey Plan

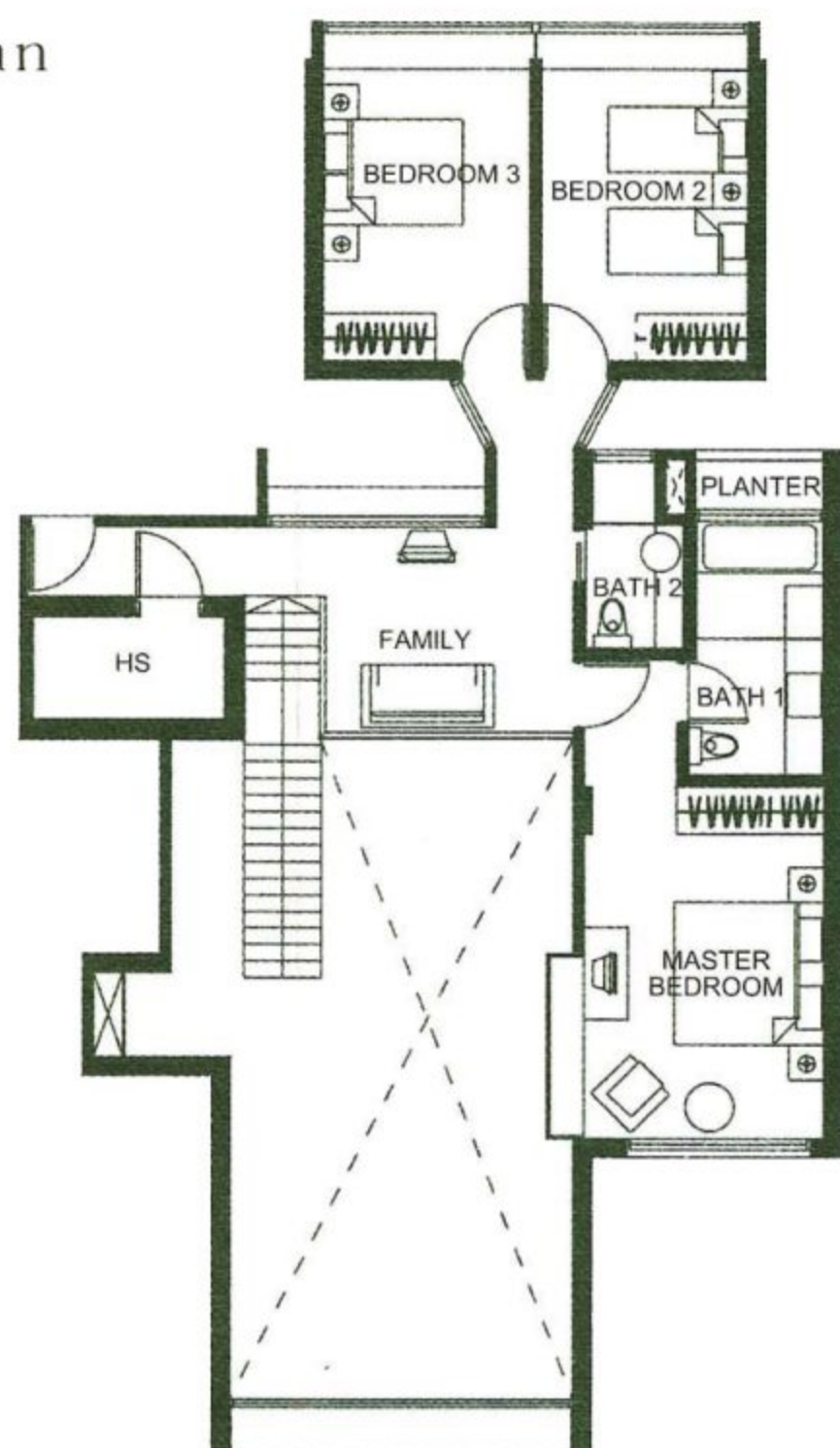


1st Storey Plan

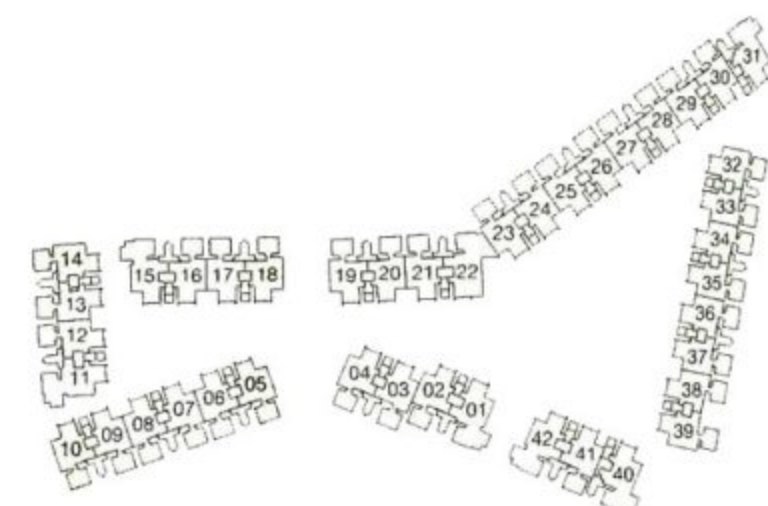
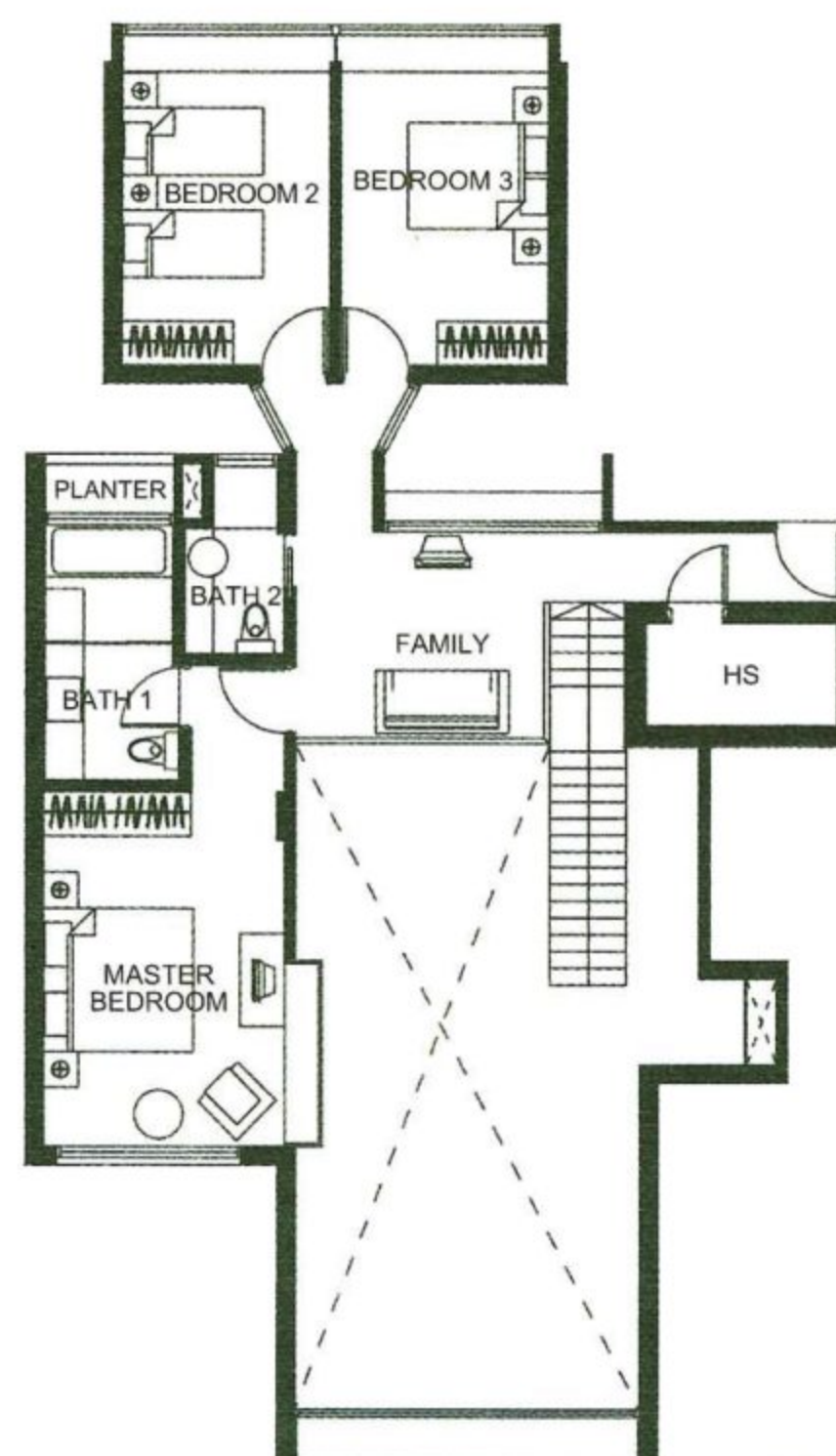


Service You Trust

2nd Storey Plan



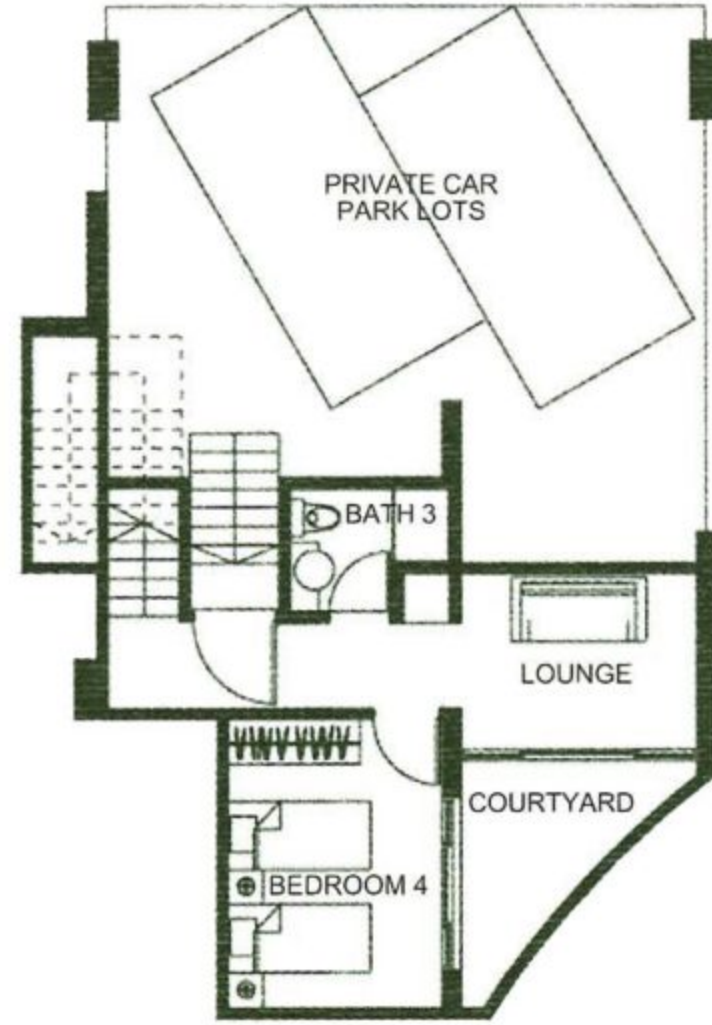
2nd Storey Plan



Type T6

#01-39
333 sqm (3,584 sqft)

Basement Plan



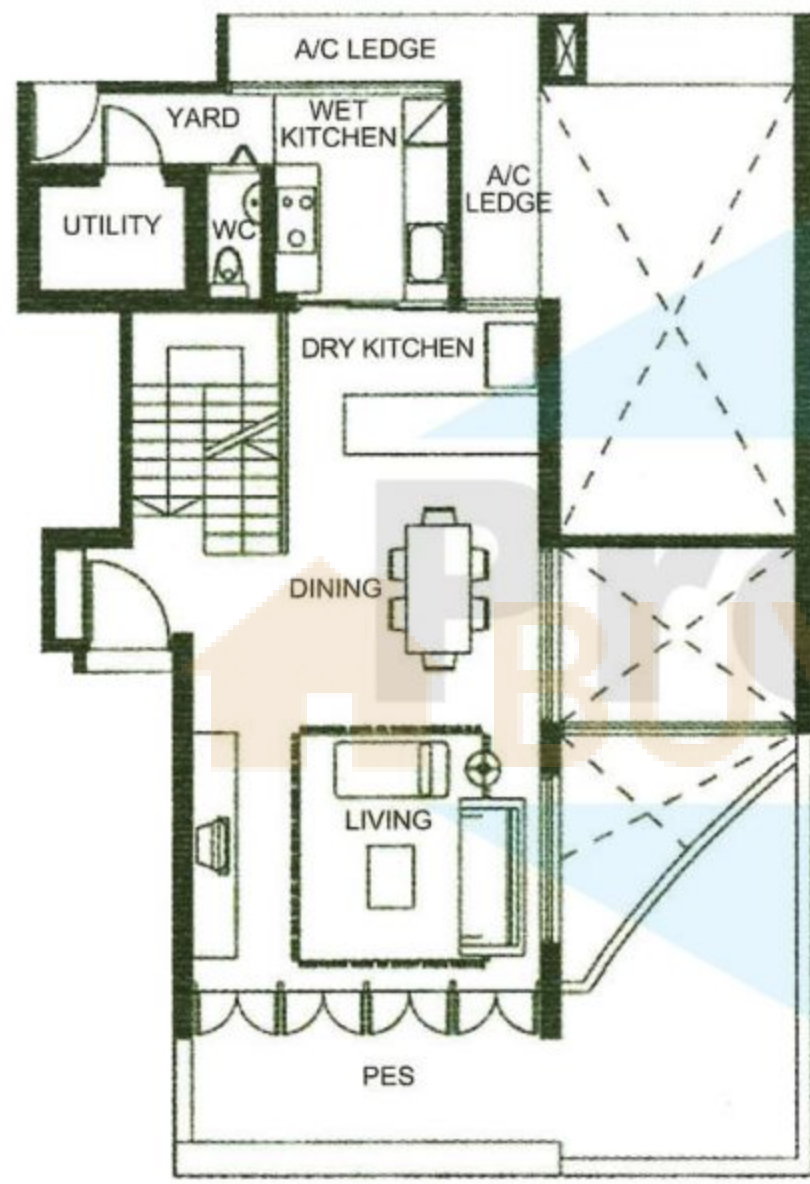
Type T7a

#01-09
291 sqm (3,132 sqft)

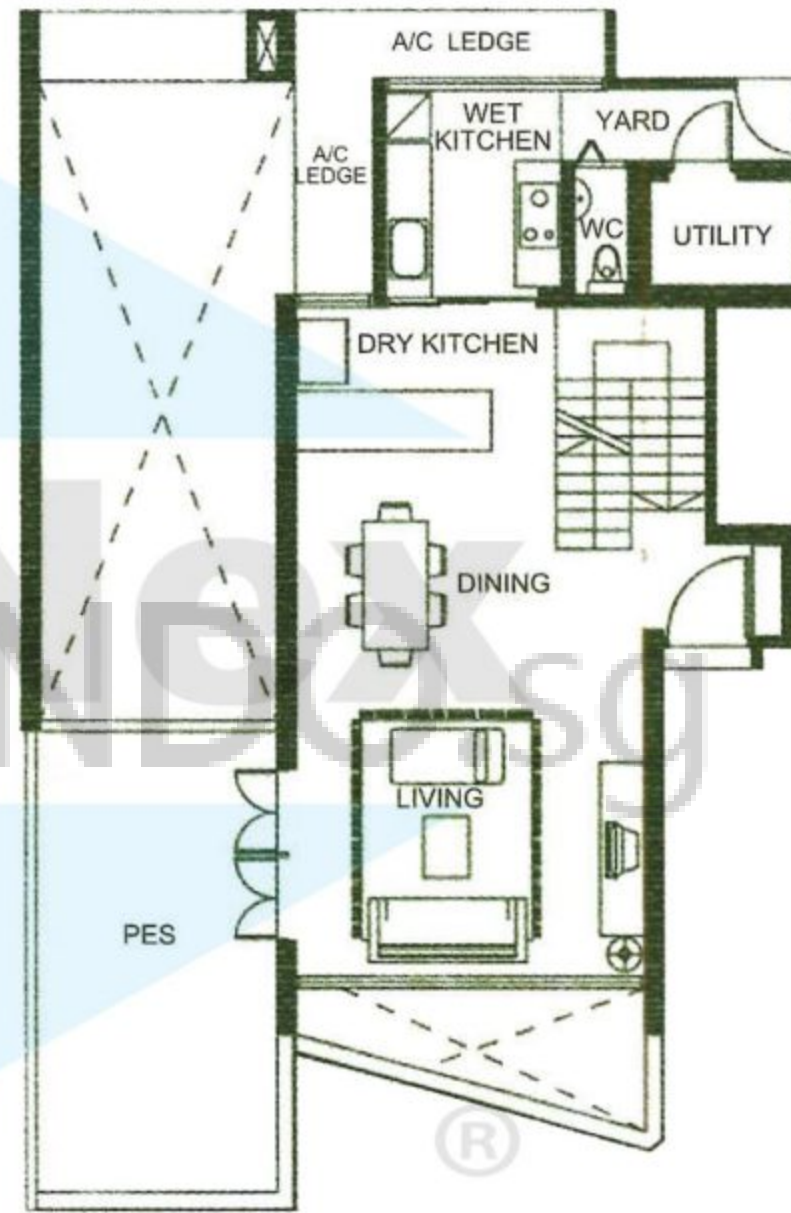
Basement Plan



1st Storey Plan

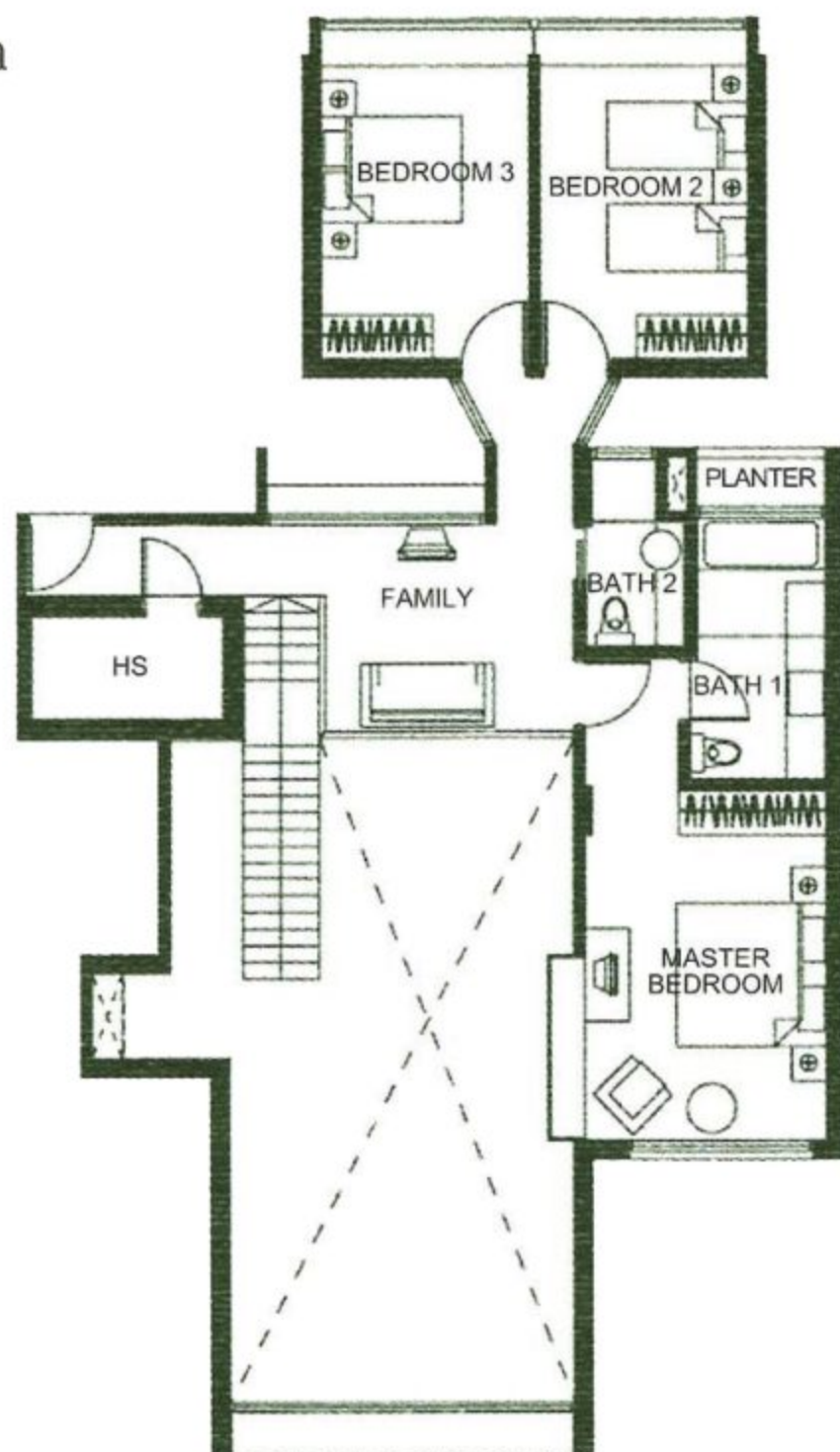


1st Storey Plan

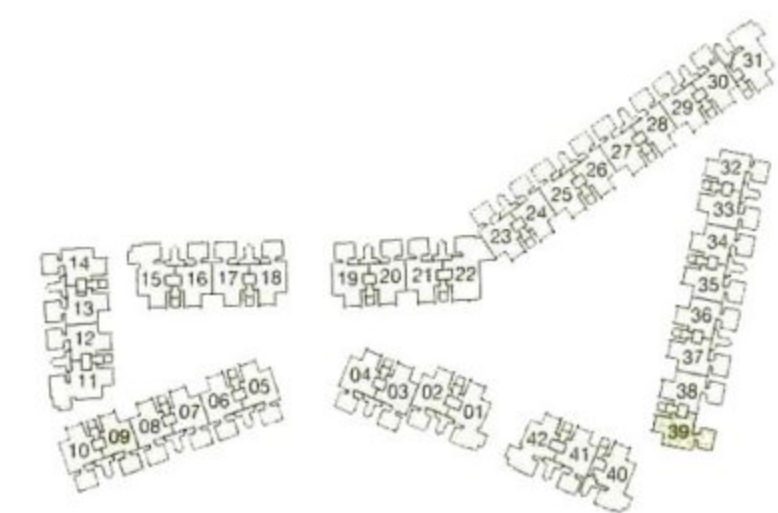
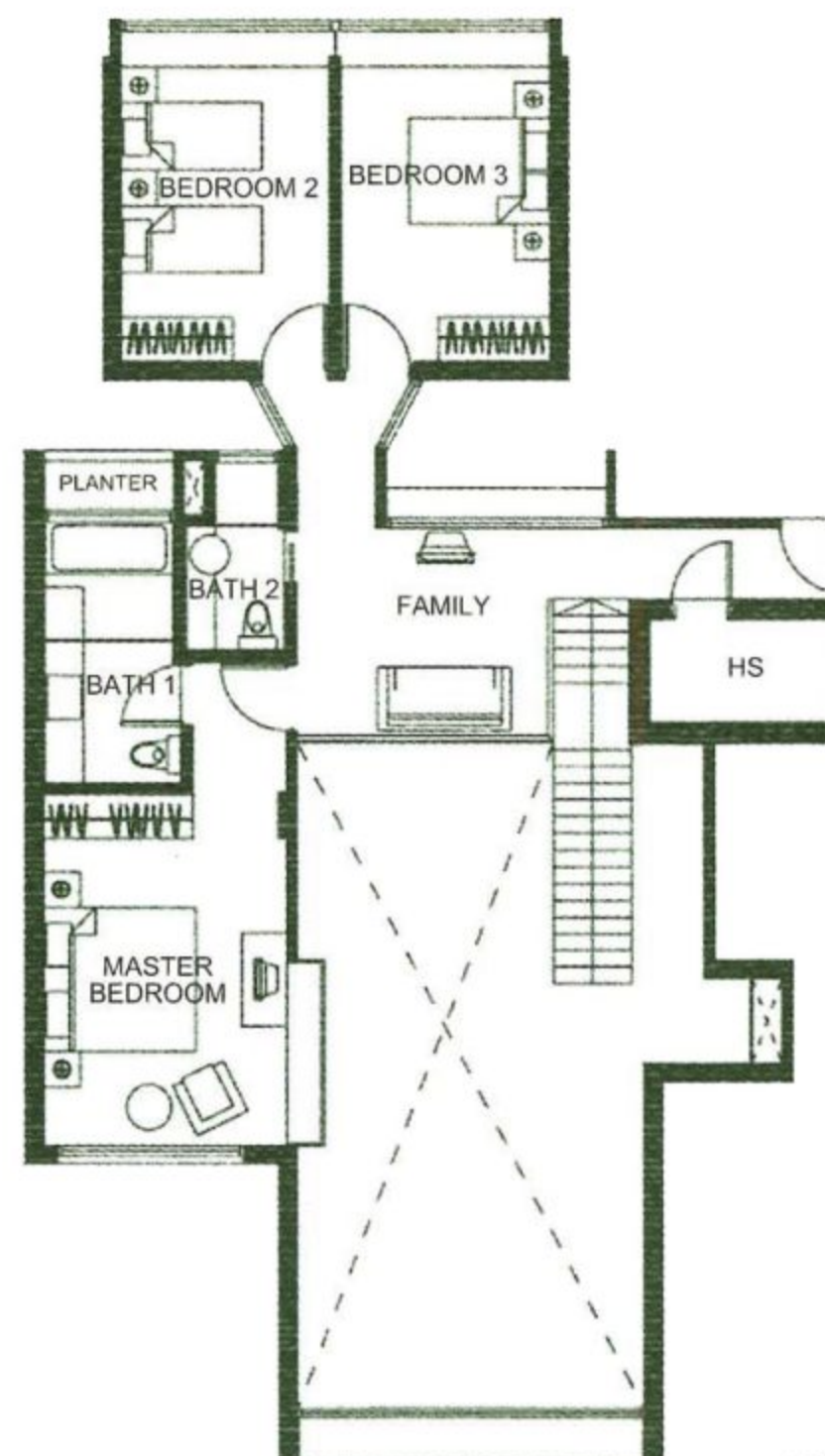


Service You Trust

2nd Storey Plan



2nd Storey Plan

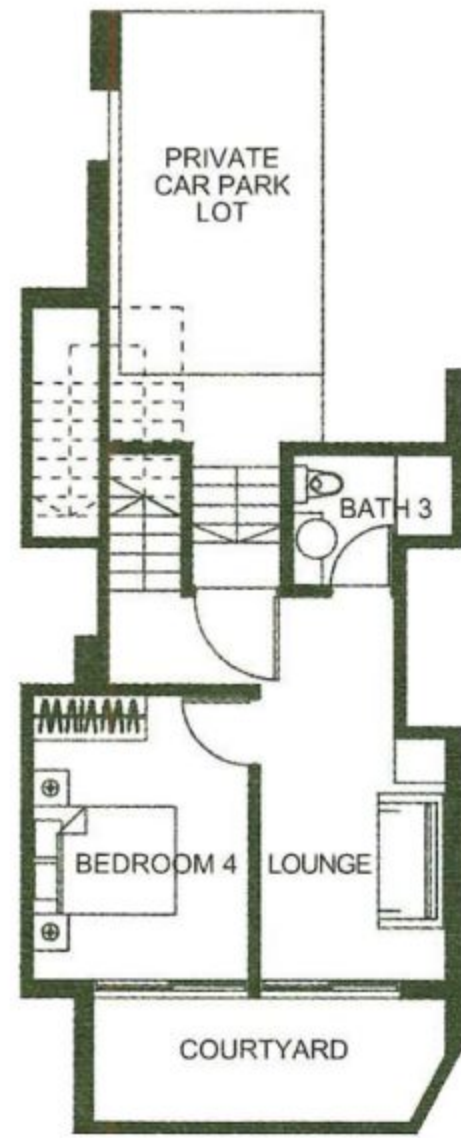


The plans are subject to change as may be required or approved by the relevant authorities. These are not drawn to scale and are for the purpose of a visual presentation of the different layouts that are available. Areas are estimates only and are subject to final survey.

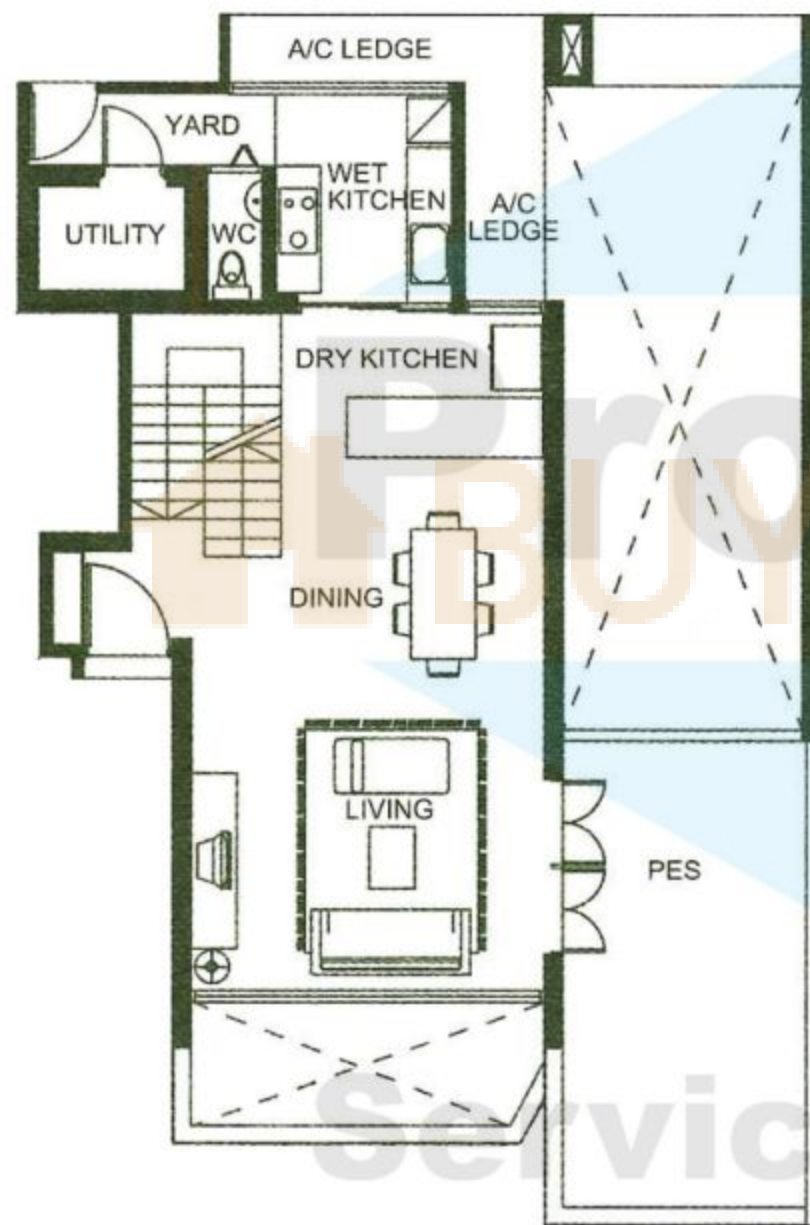
Type T7b

#01-08
293 sqm (3,154 sqft)

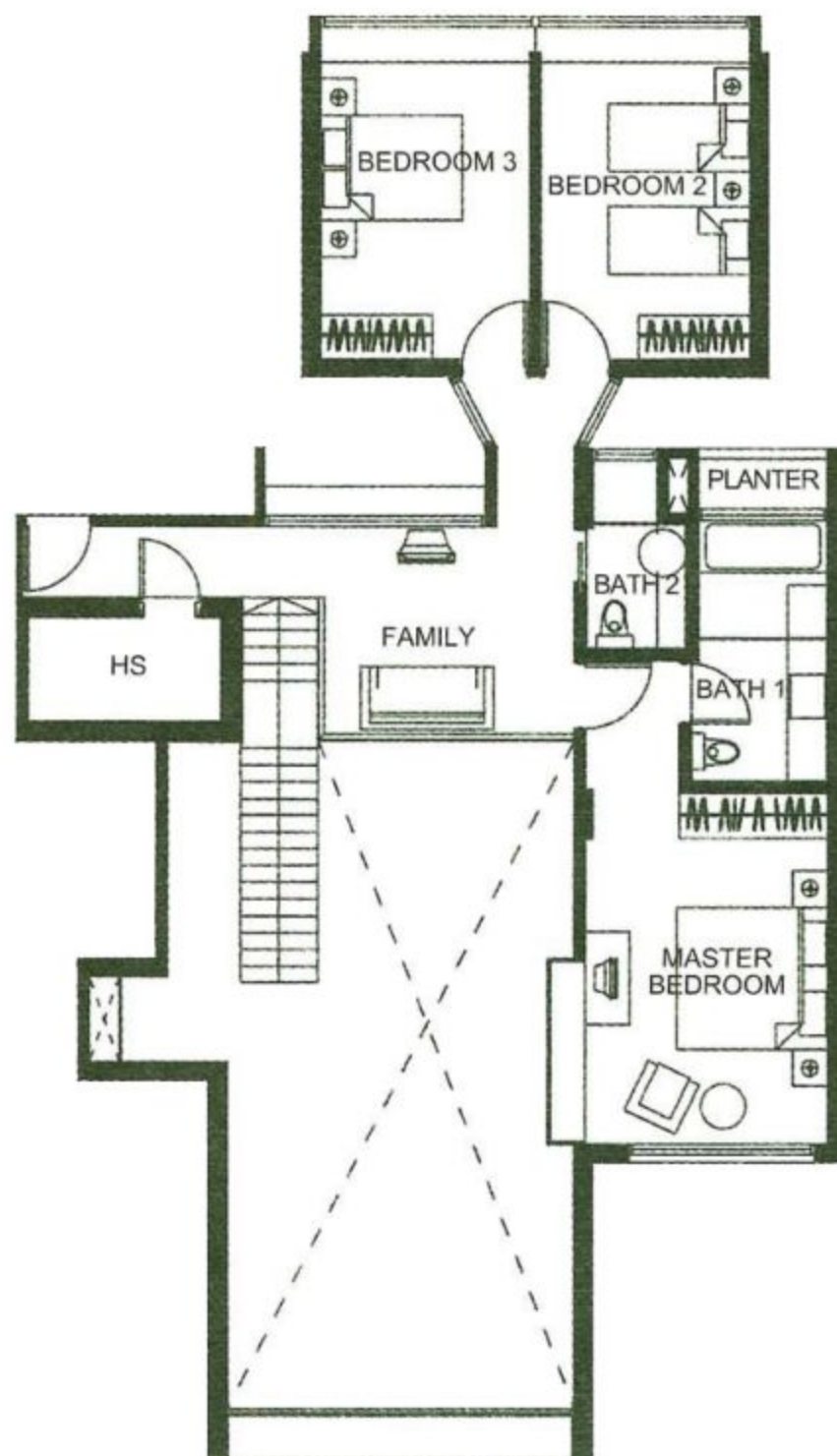
Basement Plan



1st Storey Plan



2nd Storey Plan



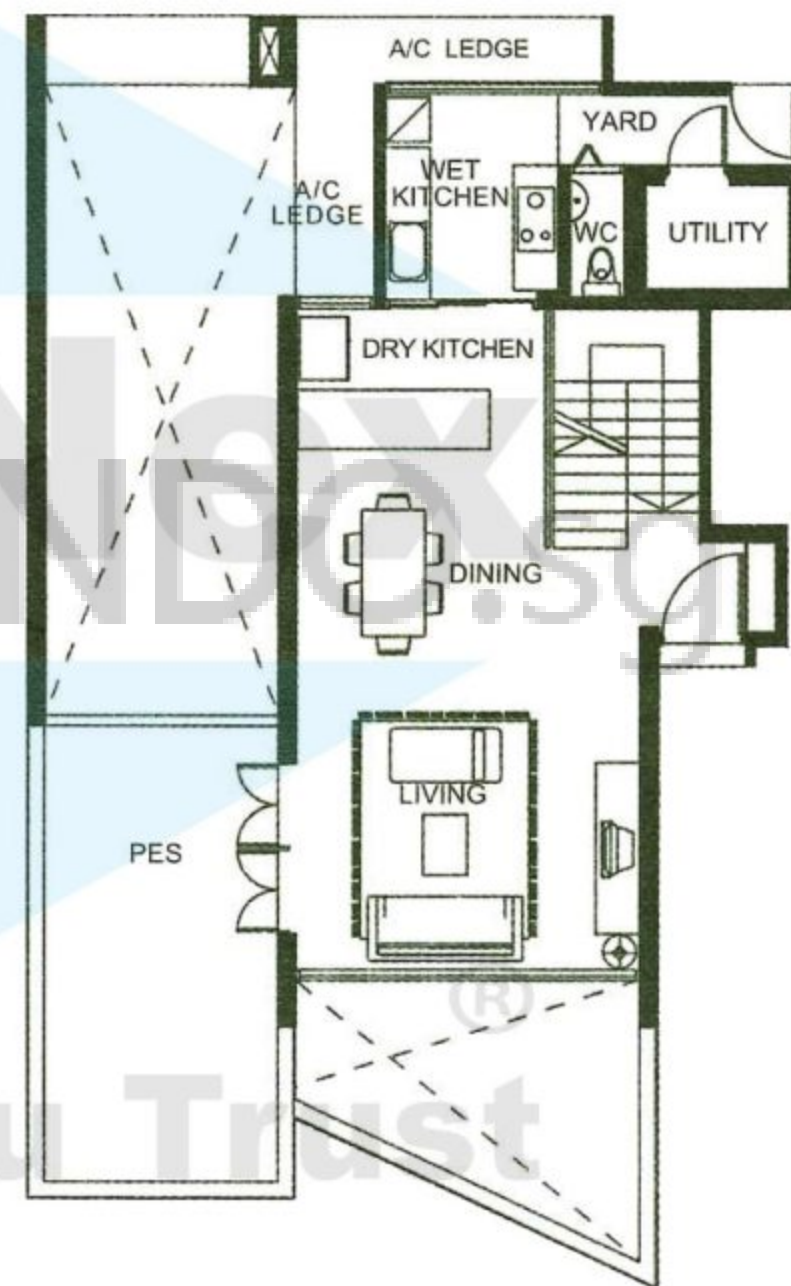
Type T8

#01-19
305 sqm (3,283 sqft)

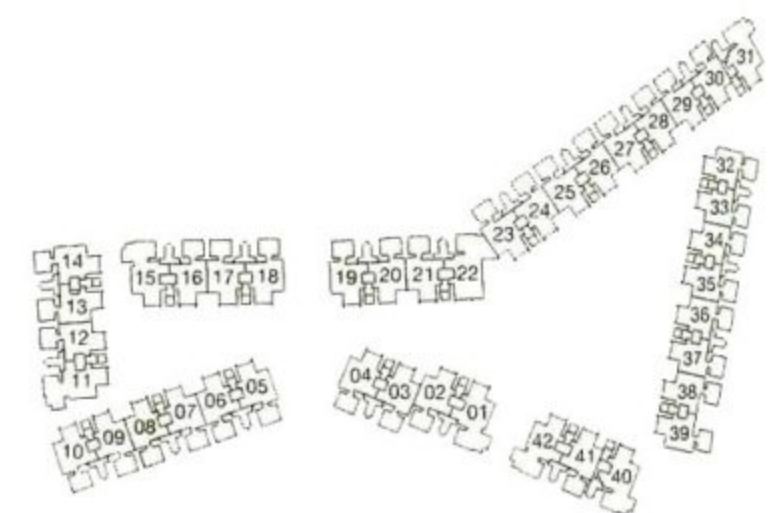
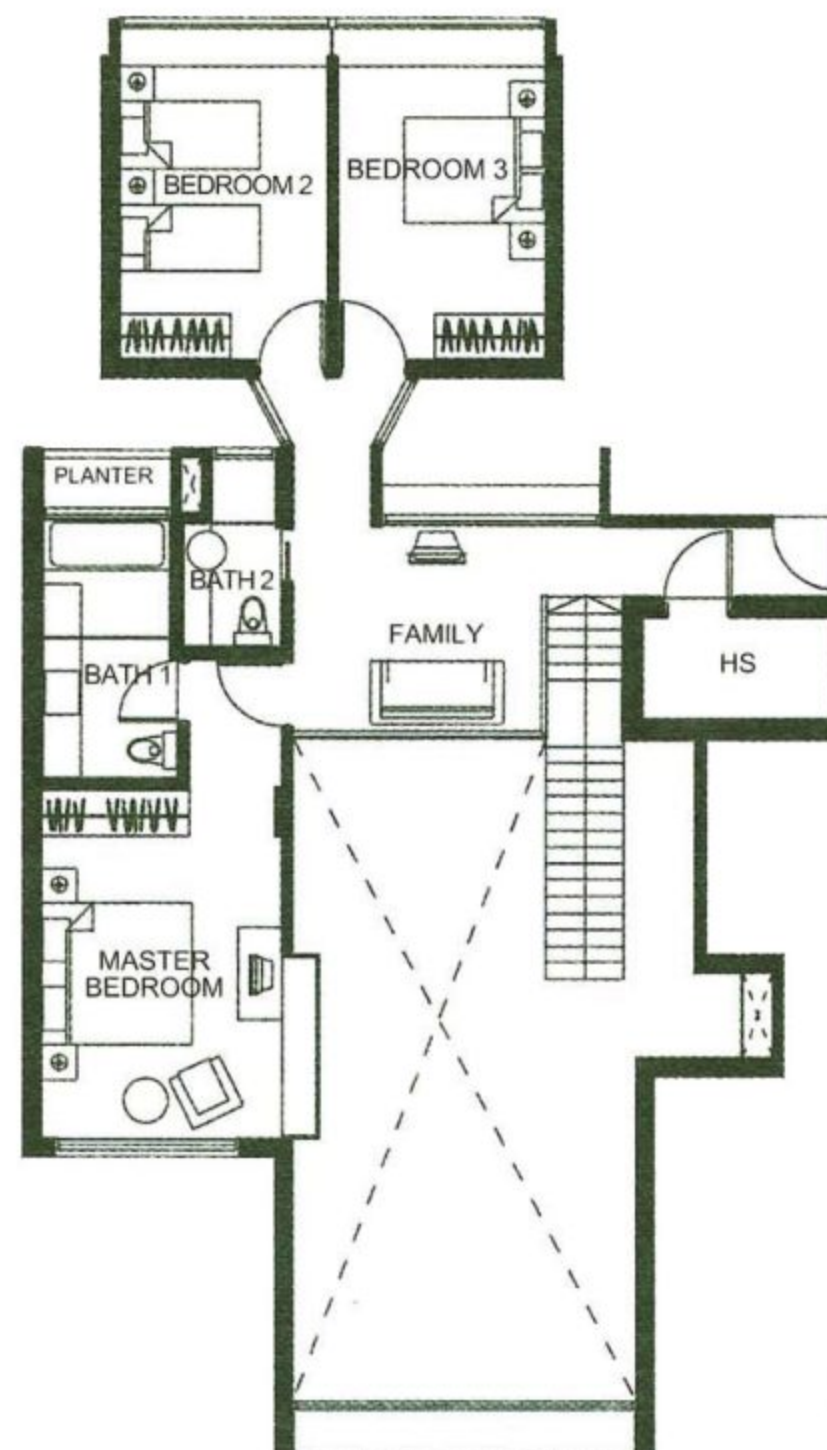
Basement Plan



1st Storey Plan



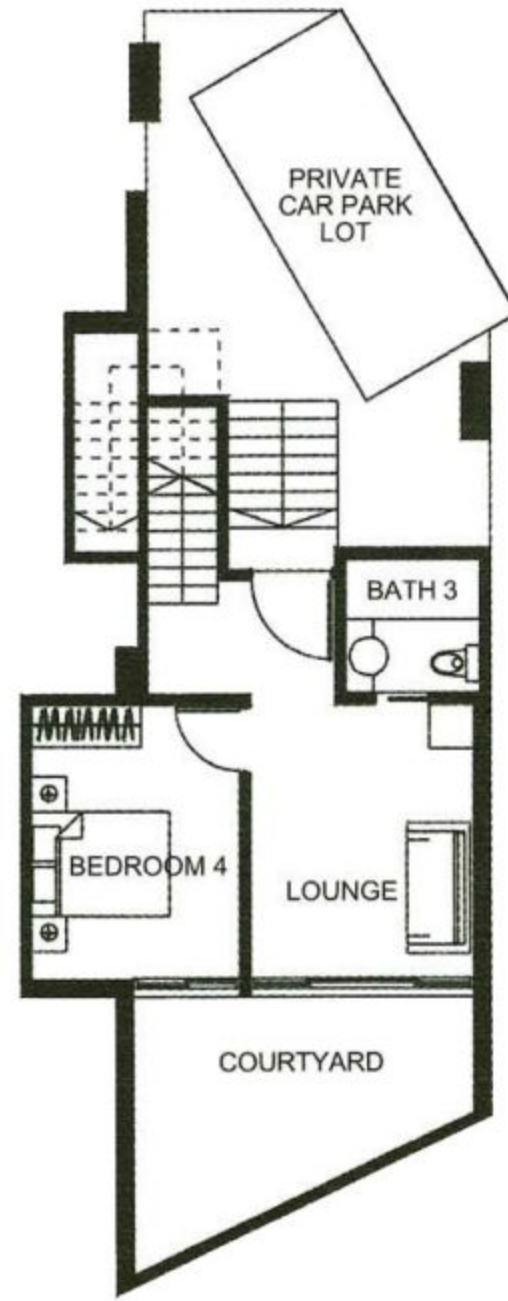
2nd Storey Plan



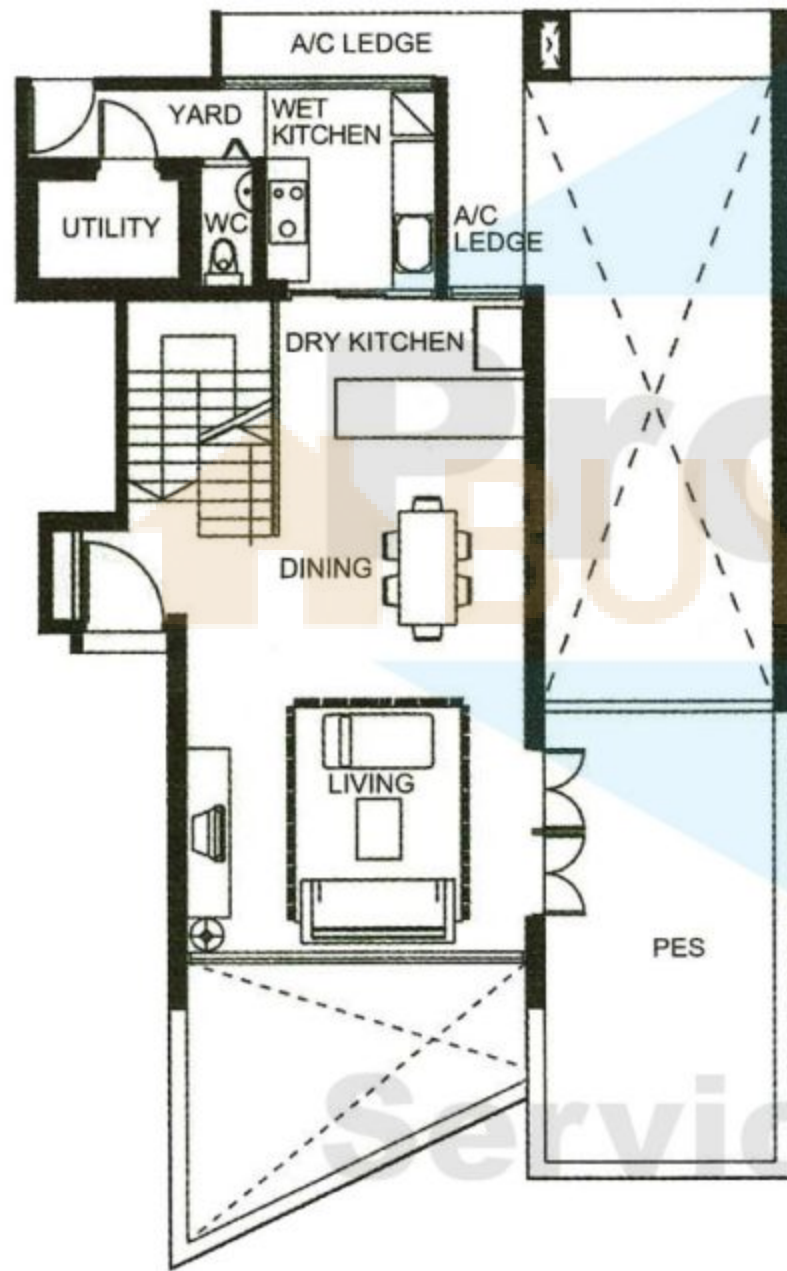
Type T9

#01-04
313 sqm (3,369 sqft)

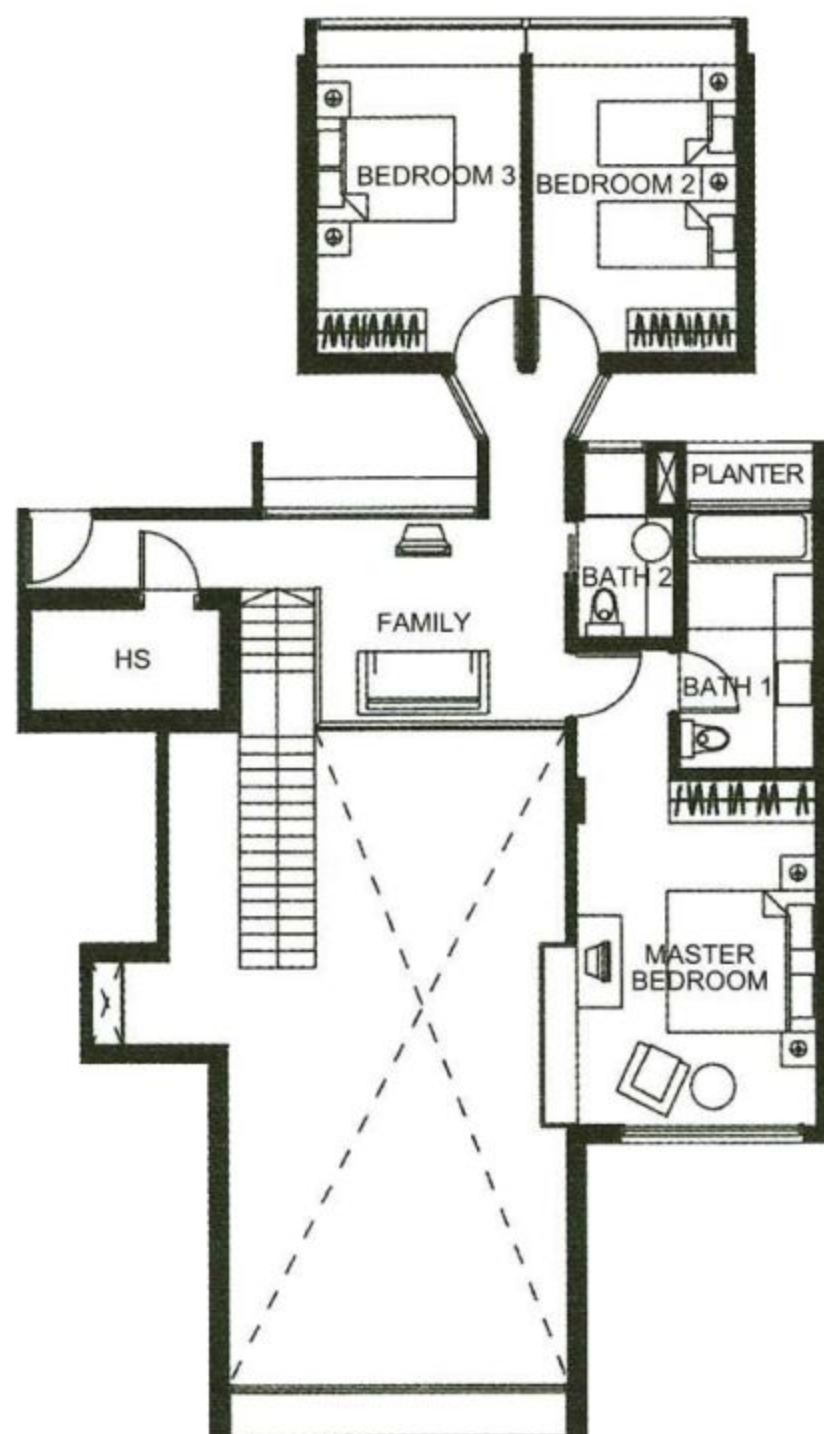
Basement Plan



1st Storey Plan



2nd Storey Plan



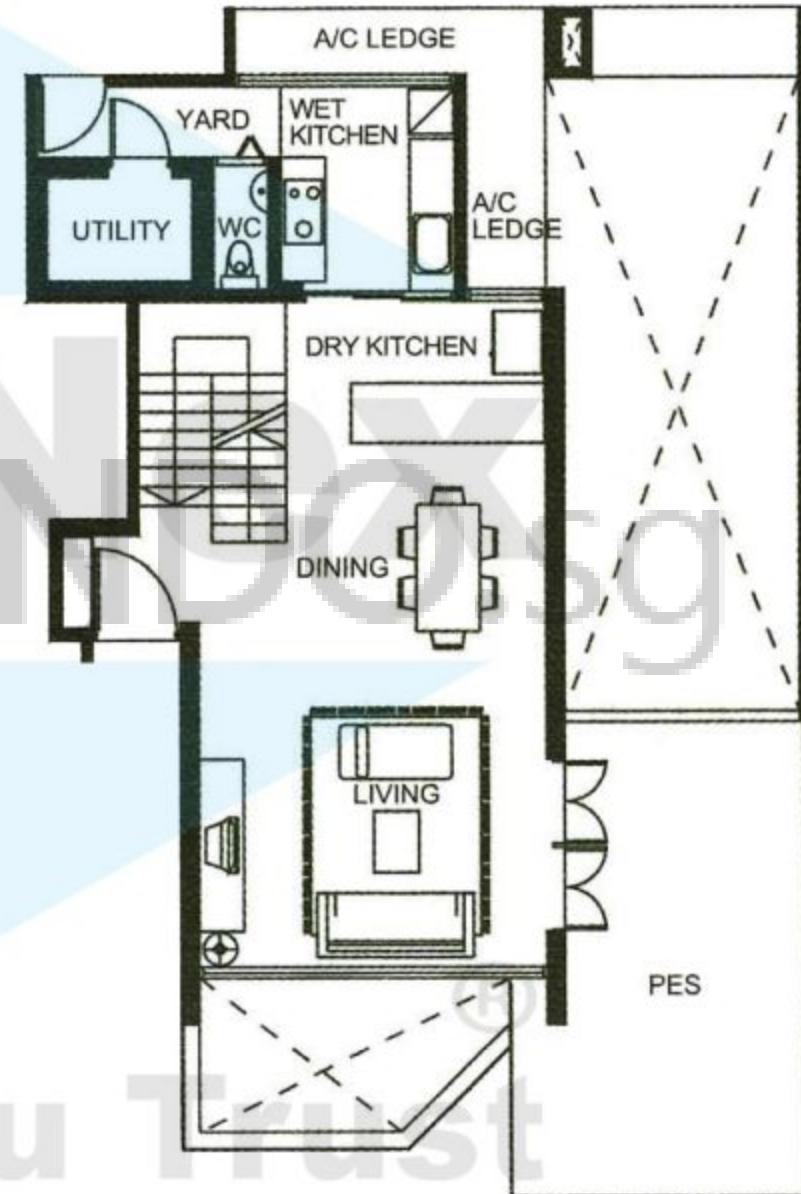
Type T10

#01-30
297 sqm (3,197 sqft)

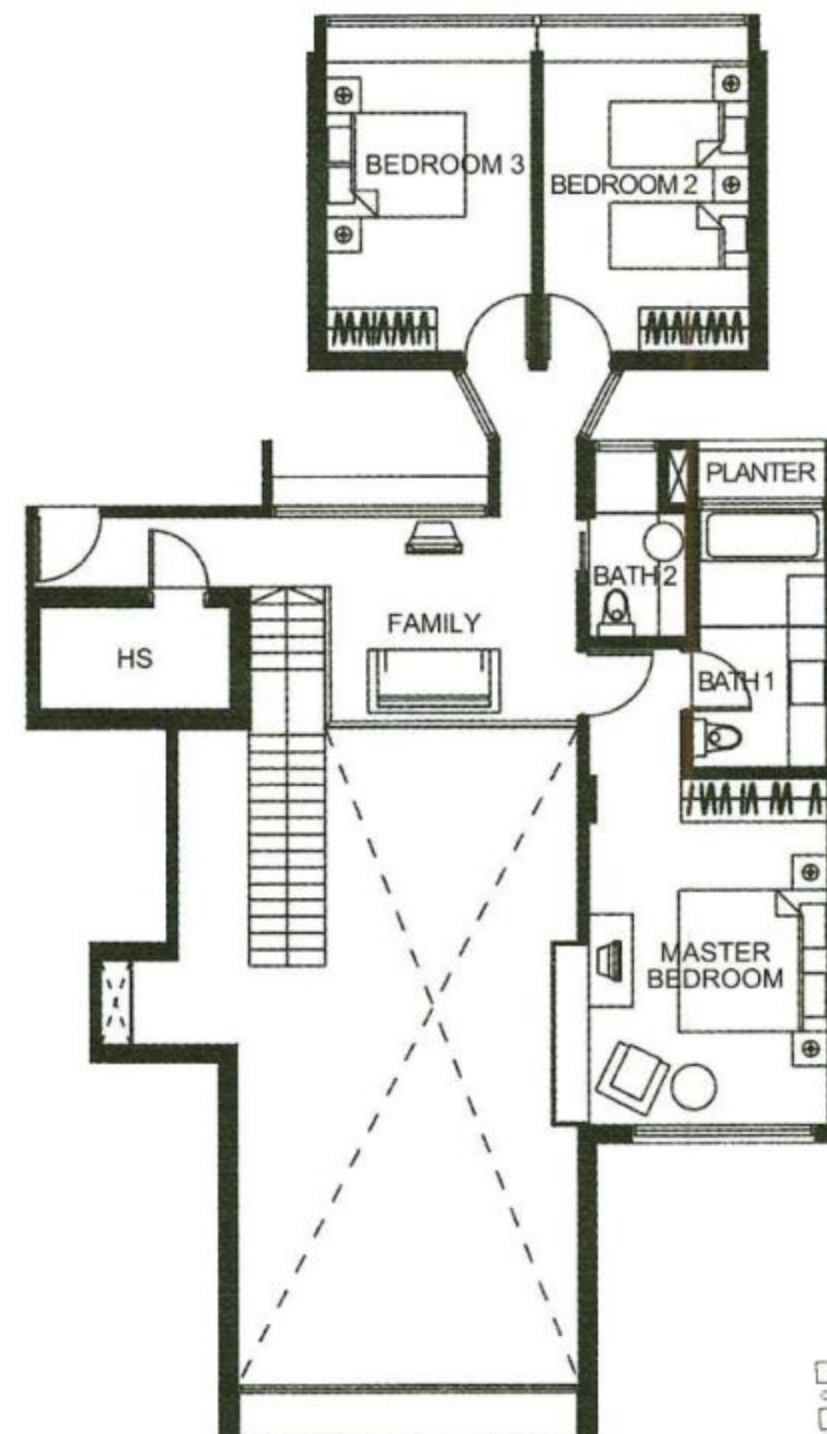
Basement Plan



1st Storey Plan



2nd Storey Plan



The plans are subject to change as may be required or approved by the relevant authorities. These are not drawn to scale and are for the purpose of a visual presentation of the different layouts that are available. Areas are estimates only and are subject to final survey.

