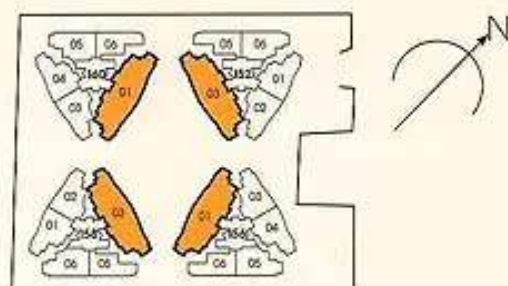
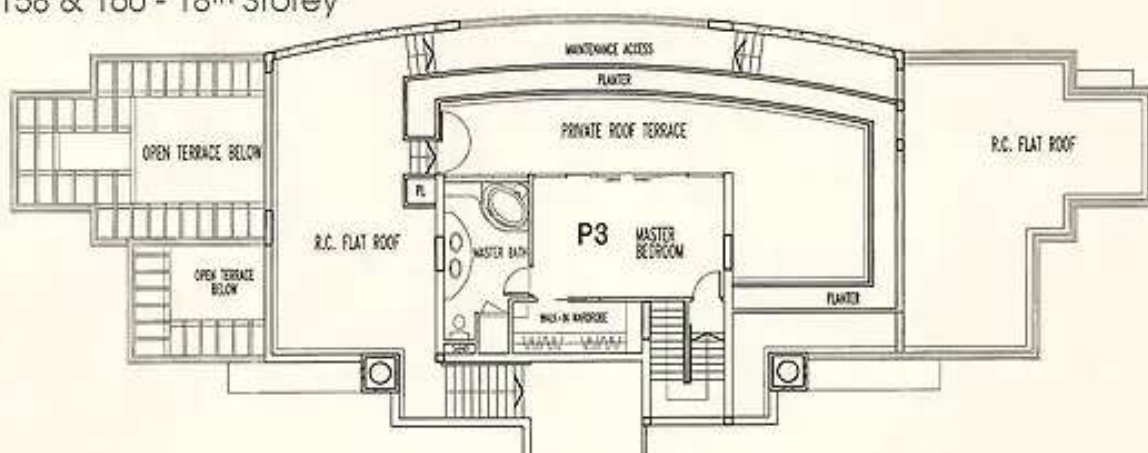


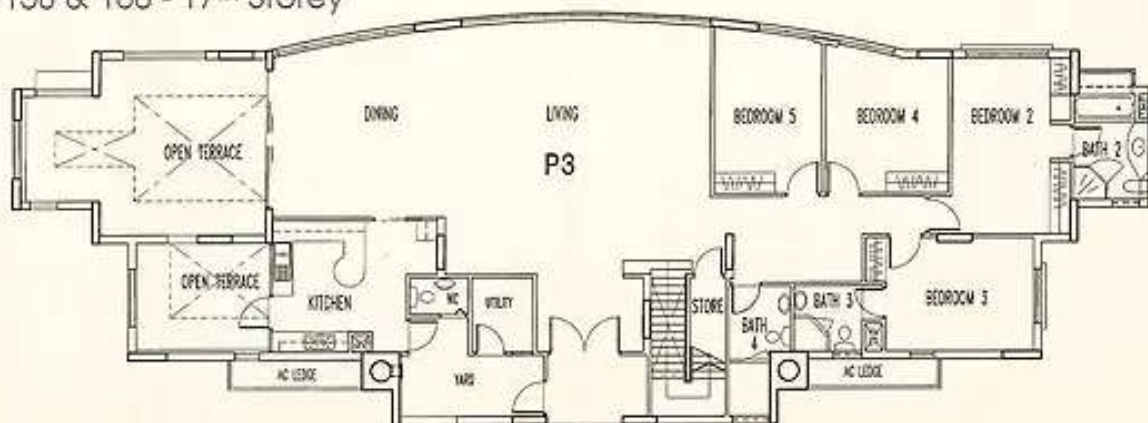
Penthouse - 404 sqm



Type P3 (Upper Floor) (111 Sqm)
Block 152 & 156 - 17th Storey
Block 158 & 160 - 18th Storey



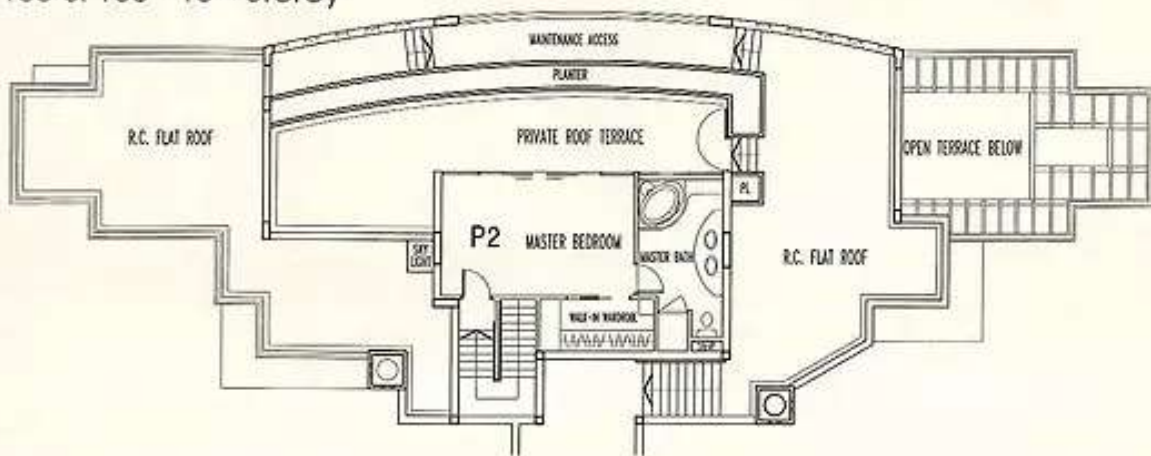
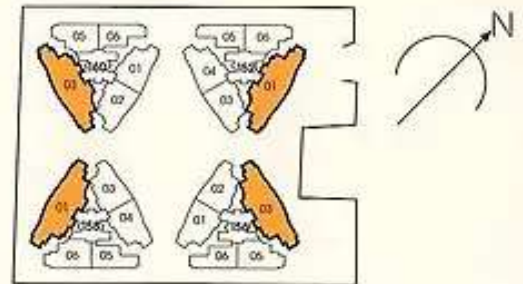
Type P3 (Lower Floor) (293 Sqm)
Block 152 & 156 - 16th Storey
Block 158 & 160 - 17th Storey



The above plans are not to scale and subject to any amendments as may be approved by the relevant authorities.
All apartment areas are approximate of typical plans and are subject to final survey. The developer and its agents cannot be held liable for any inaccuracies.

Penthouse - 375 sqm

Type P2 (Upper Floor) (100 Sqm)
Block 152 & 156 - 17th Storey
Block 158 & 160 - 18th Storey



Type P2 (Lower Floor) (275 Sqm)
Block 152 & 156 - 16th Storey
Block 158 & 160 - 17th Storey



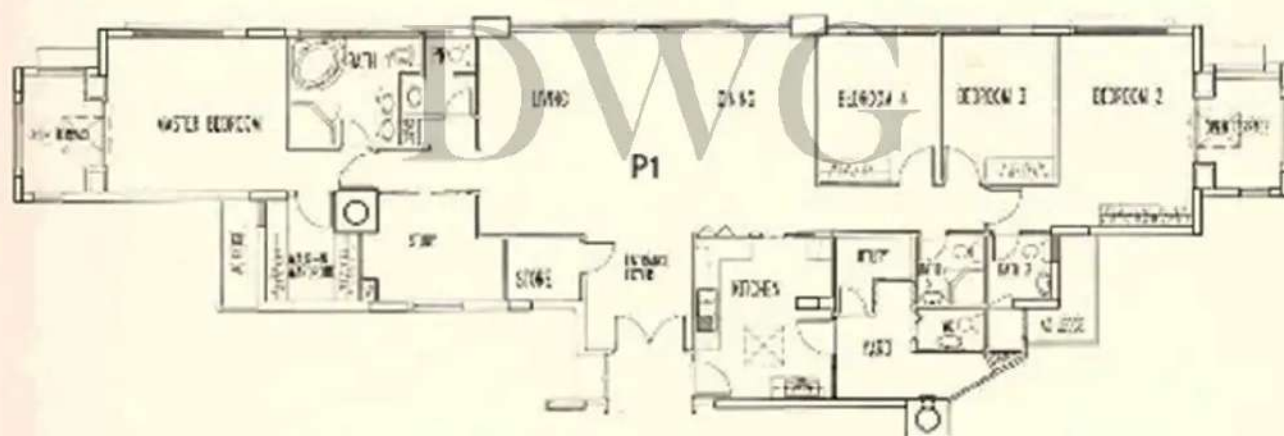
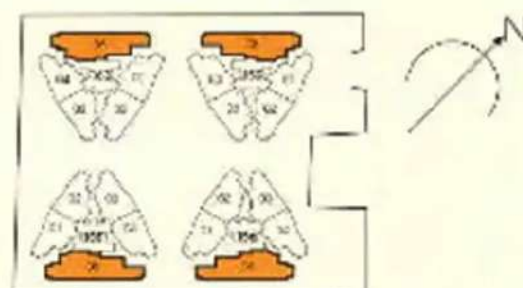
The above plans are not to scale and subject to any amendments as may be approved by the relevant authorities.
All apartment areas are approximate of typical plans and are subject to final survey. The developer and its agents cannot be held liable for any inaccuracies.

Penthouse - 231 sqm

Type P1 (231 Sqm)

Block 152 & 156 - 16th Storey

Block 158 & 160 - 17th Storey

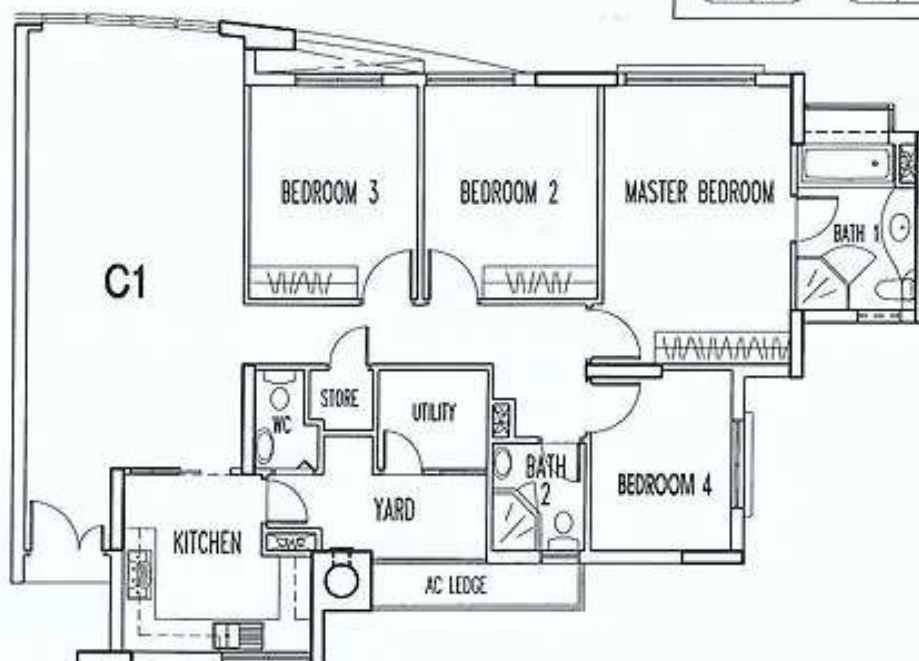
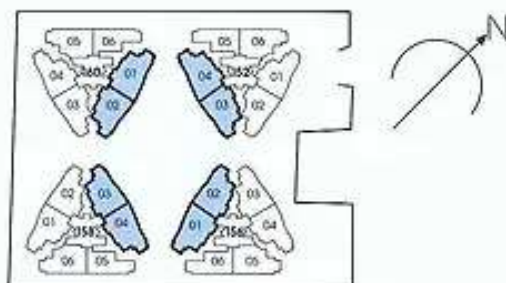


4 Bedroom

Type C1 (144 Sqm)

Block 152 & 156 - 5th to 14th Storey

Block 158 & 160 - 5th to 15th Storey



Type C1 (144 Sqm)
Block 152 to 160 - 3rd Storey



Type C1 (144 Sqm)
Block 152 to 160 - 4th Storey

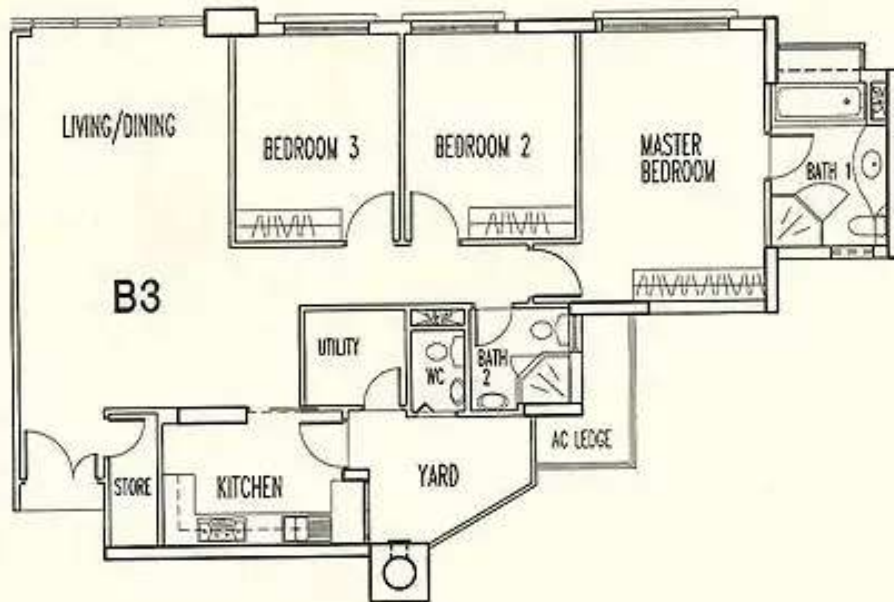
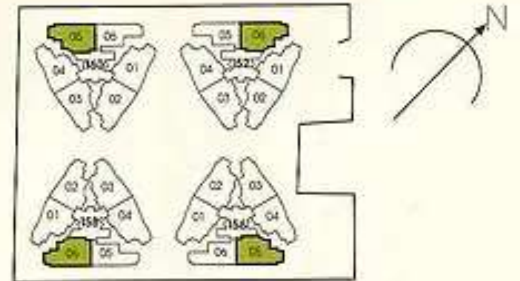


Type C1a (147 Sqm)
Block 152 & 156 - 2nd and 15th Storey
Block 158 & 160 - 2nd and 16th Storey

The above plans are not to scale and subject to any amendments as may be approved by the relevant authorities.
All apartment areas are approximate of typical plans and are subject to final survey. The developer and its agents cannot be held liable for any inaccuracies.

3 Bedroom

Type B3 (130 Sqm)
 Block 152 & 156 - 5th to 14th Storey
 Block 158 & 160 - 5th to 15th Storey



Type B3 (130 Sqm)
 Block 152 to 160 - 2nd and 3rd Storey



Type B3 (130 Sqm)
 Block 152 to 160 - 4th Storey



Type B3 (130 Sqm)
 Block 152 & 156 - 15th Storey
 Block 158 & 160 - 16th Storey

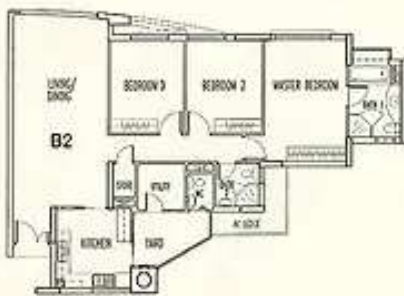
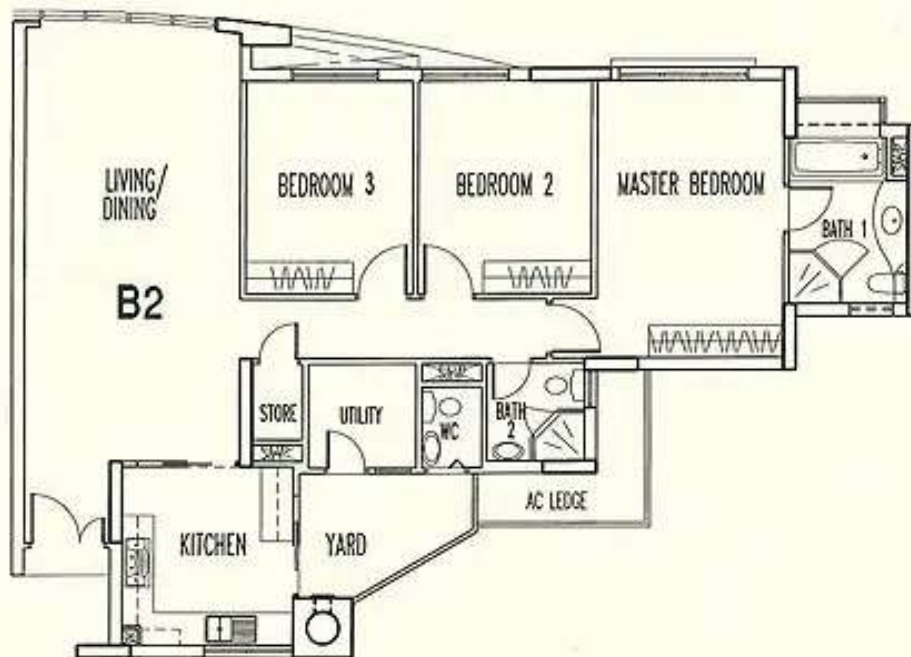
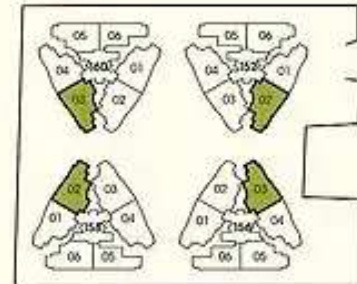
The above plans are not to scale and subject to any amendments as may be approved by the relevant authorities.
 All apartment areas are approximate of typical plans and are subject to final survey. The developer and its agents cannot be held liable for any inaccuracies.

3 Bedroom

Type B2 (135 Sqm)

Block 152 & 156 - 5th to 14th Storey

Block 158 & 160 - 5th to 15th Storey



Type B2 (135 Sqm)
Block 152 to 160 - 3rd Storey



Type B2 (135 Sqm)
Block 152 to 160 - 4th Storey

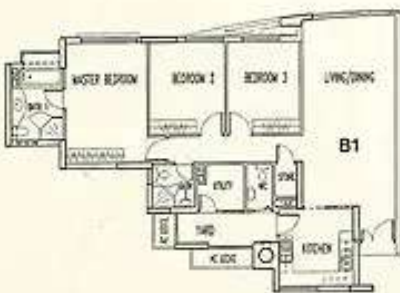
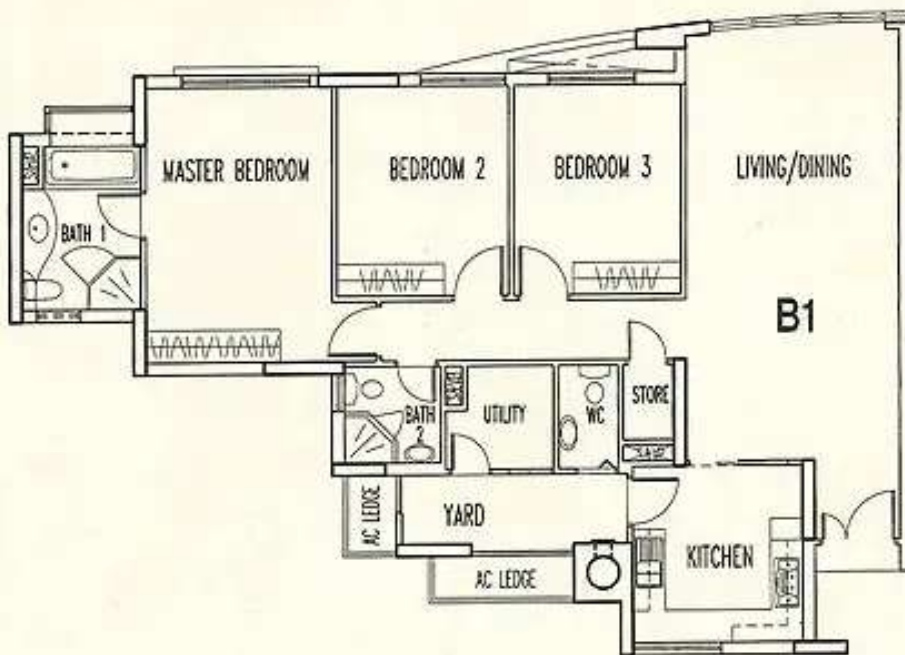
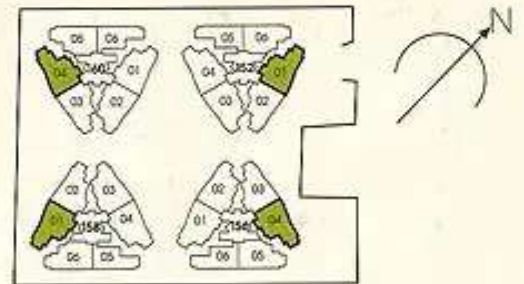


Type B2a (137 Sqm)
Block 152 & 156 - 2nd and 15th Storey
Block 158 & 160 - 2nd and 16th Storey

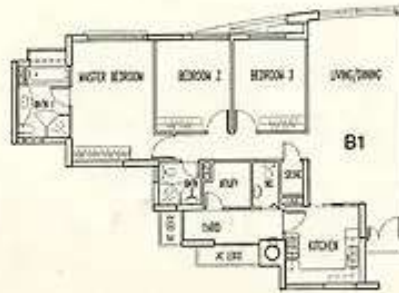
The above plans are not to scale and subject to any amendments as may be approved by the relevant authorities.
All apartment areas are approximate of typical plans and are subject to final survey. The developer and its agents cannot be held liable for any inaccuracies.

3 Bedroom

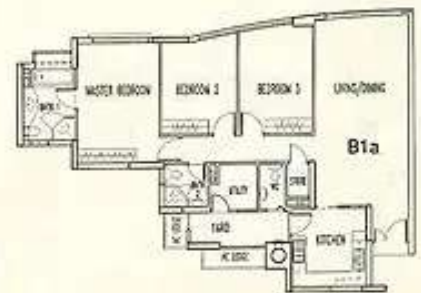
Type B1 (134 Sqm)
 Block 152 & 156 - 5th to 14th Storey
 Block 158 & 160 - 5th to 15th Storey



Type B1 (134 Sqm)
 Block 152 to 160 - 3rd Storey



Type B1 (134 Sqm)
 Block 152 to 160 - 4th Storey



Type B1a (136 Sqm)
 Block 152 & 156 - 2nd and 15th Storey
 Block 158 & 160 - 2nd and 16th Storey

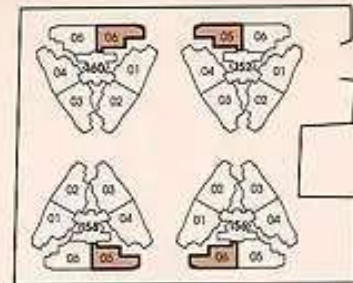
The above plans are not to scale and subject to any amendments as may be approved by the relevant authorities.
 All apartment areas are approximate of typical plans and are subject to final survey. The developer and its agents cannot be held liable for any inaccuracies.

2 Bedroom

Type A1 (100 Sqm)

Block 152 & 156 - 5th to 14th Storey

Block 158 & 160 - 5th to 15th Storey



Type A1 (100 Sqm)
Block 152 to 160 - 2nd and 3rd Storey



Type A1 (100 Sqm)
Block 152 to 160 - 4th Storey



Type A1 (100 Sqm)
Block 152 & 156 - 15th Storey
Block 158 & 160 - 16th Storey

The above plans are not to scale and subject to any amendments as may be approved by the relevant authorities.
All apartment areas are approximate of typical plans and are subject to final survey. The developer and its agent's cannot be held liable for any inaccuracies.