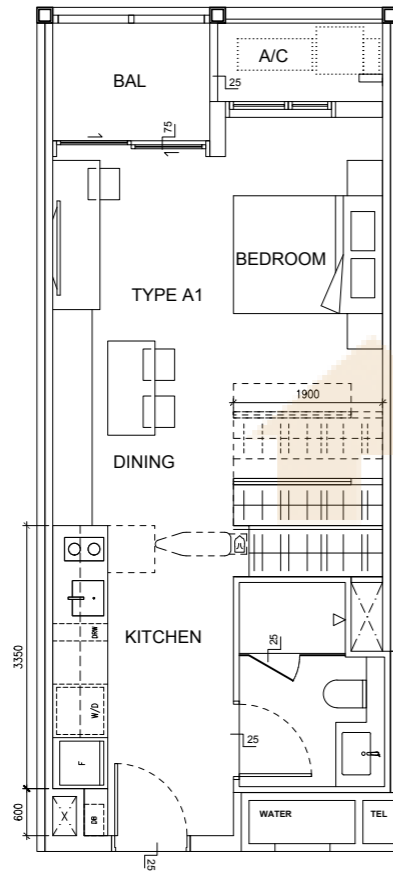


STUDIO

TYPE A1

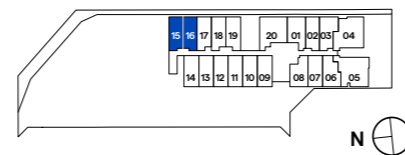
AREA 44.45 sqm (include 2.25 sqm A/C Ledge, 3.25 sqm Balcony)

UNIT(S) #04-15 to #11-15
 #14-15 to #18-15
 #04-16* to #11-16*
 #14-16* to #18-16*



NOTE:
 *Mirror Image

Plans are subject to change/amendments as may be required and/or approved by the Developer and/or the relevant authorities and do not form part of any offer or contract. These are not drawn to scale and are for the purpose of visual presentation only. The balcony shall not be enclosed unless with the approved balcony screen. For an illustration of the approved balcony screen, please refer to APPROVED BALCONY SCREEN DESIGN page of this brochure.

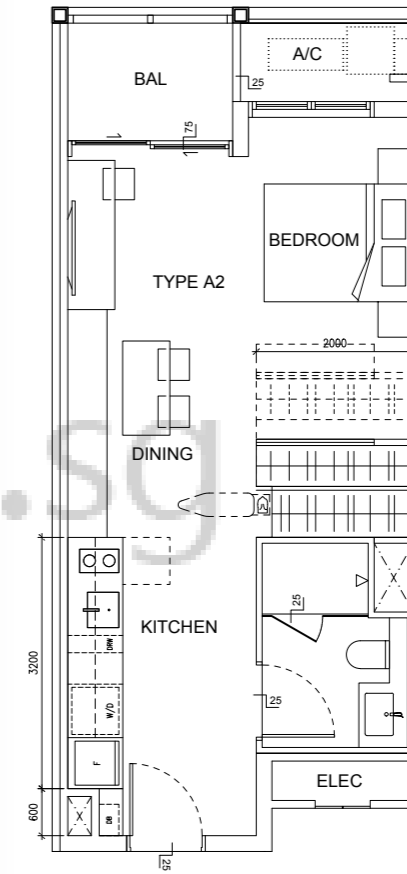


STUDIO

TYPE A2

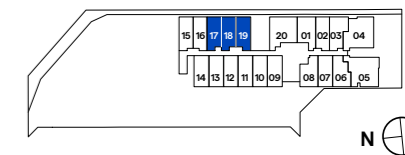
AREA 45.38 sqm (include 2.45 sqm A/C Ledge, 3.25 sqm Balcony)

UNIT(S) #04-17 to #18-17
 #04-18 to #18-18
 #04-19 * to #18-19 *



NOTE:
 *Mirror Image

Plans are subject to change/amendments as may be required and/or approved by the Developer and/or the relevant authorities and do not form part of any offer or contract. These are not drawn to scale and are for the purpose of visual presentation only. The balcony shall not be enclosed unless with the approved balcony screen. For an illustration of the approved balcony screen, please refer to APPROVED BALCONY SCREEN DESIGN page of this brochure.

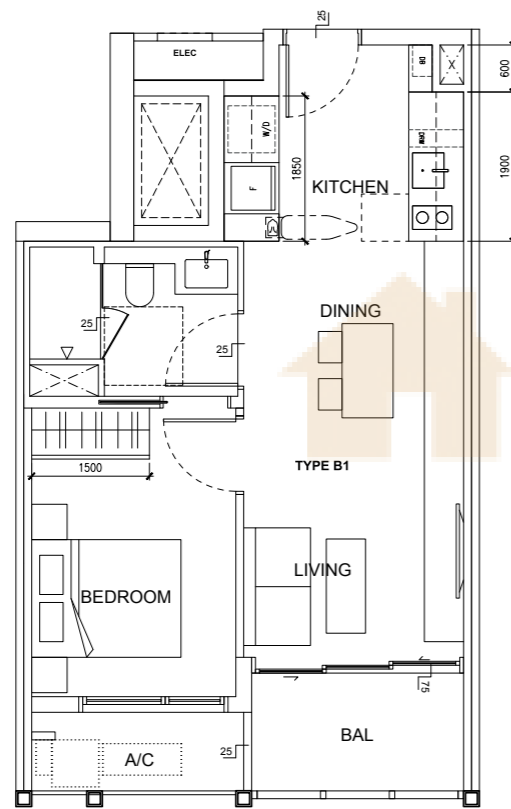


1-BEDROOM SUITE

TYPE B1

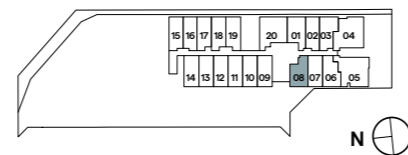
AREA 48.27 sqm (include 2.85 sqm A/C Ledge, 4.30 sqm Balcony)

UNIT(S) #04-08 to #20-08



NOTE:
*Mirror Image

Plans are subject to change/amendments as may be required and/or approved by the Developer and/or the relevant authorities and do not form part of any offer or contract. These are not drawn to scale and are for the purpose of visual presentation only. The balcony shall not be enclosed unless with the approved balcony screen. For an illustration of the approved balcony screen, please refer to APPROVED BALCONY SCREEN DESIGN page of this brochure.



1-BEDROOM SUITE

TYPE B2

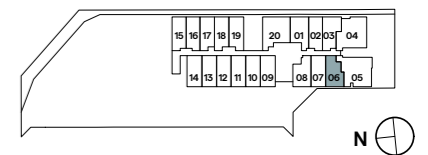
AREA 48.27 sqm (include 2.85 sqm A/C Ledge, 4.30 sqm Balcony)

UNIT(S) #04-06 to #20-06



NOTE:
*Mirror Image

Plans are subject to change/amendments as may be required and/or approved by the Developer and/or the relevant authorities and do not form part of any offer or contract. These are not drawn to scale and are for the purpose of visual presentation only. The balcony shall not be enclosed unless with the approved balcony screen. For an illustration of the approved balcony screen, please refer to APPROVED BALCONY SCREEN DESIGN page of this brochure.

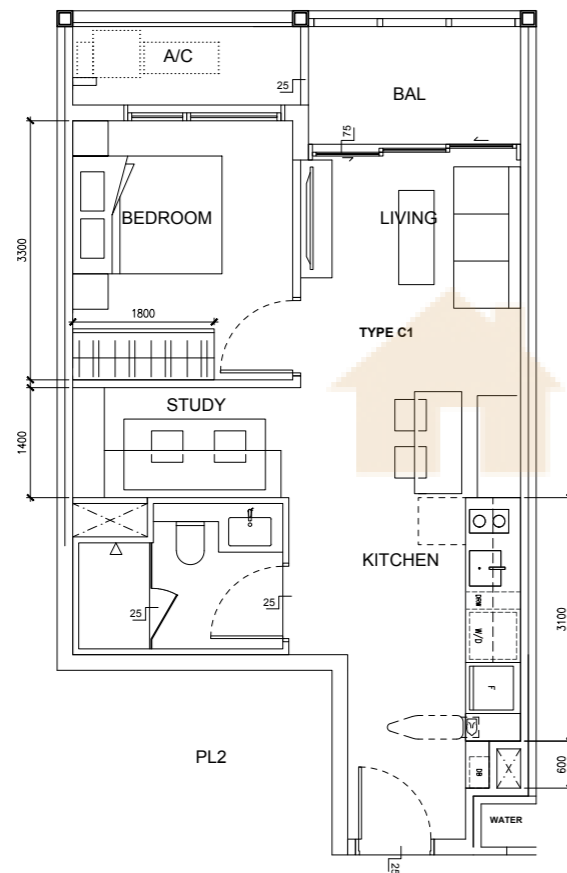


1-BEDROOM + STUDY

TYPE C1

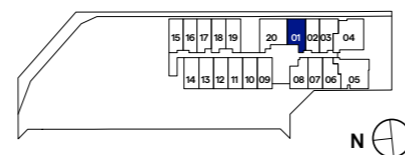
AREA 52.66 sqm (include 3.05 sqm A/C Ledge, 4.30 sqm Balcony)

UNIT(S) #04-01 to #20-01



NOTE:
*Mirror Image

Plans are subject to change/amendments as may be required and/or approved by the Developer and/or the relevant authorities and do not form part of any offer or contract. These are not drawn to scale and are for the purpose of visual presentation only. The balcony shall not be enclosed unless with the approved balcony screen. For an illustration of the approved balcony screen, please refer to APPROVED BALCONY SCREEN DESIGN page of this brochure.

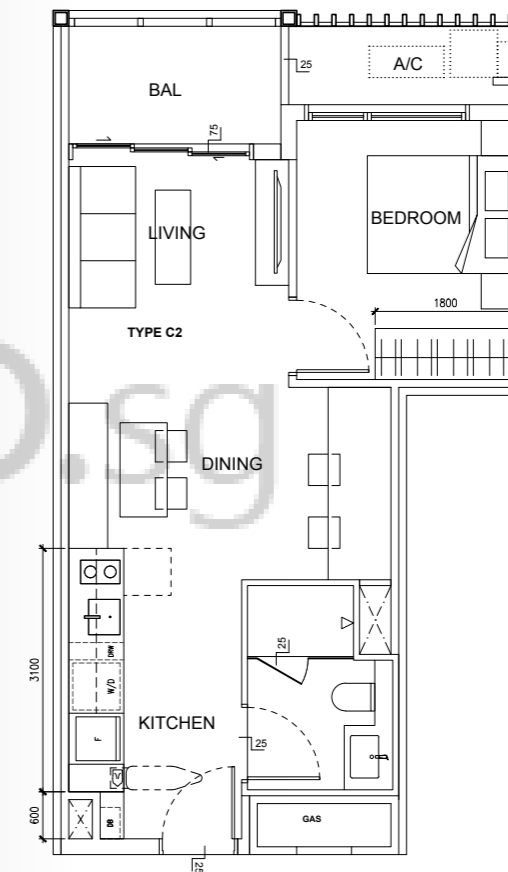


1-BEDROOM + STUDY

TYPE C2

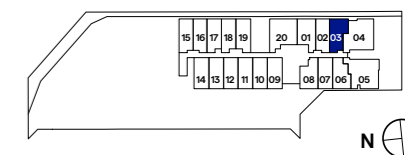
AREA 50.80 sqm (include 3.05 sqm A/C Ledge, 4.30 sqm Balcony)

UNIT(S) #04-03 to #20-03



NOTE:
*Mirror Image

Plans are subject to change/amendments as may be required and/or approved by the Developer and/or the relevant authorities and do not form part of any offer or contract. These are not drawn to scale and are for the purpose of visual presentation only. The balcony shall not be enclosed unless with the approved balcony screen. For an illustration of the approved balcony screen, please refer to APPROVED BALCONY SCREEN DESIGN page of this brochure.

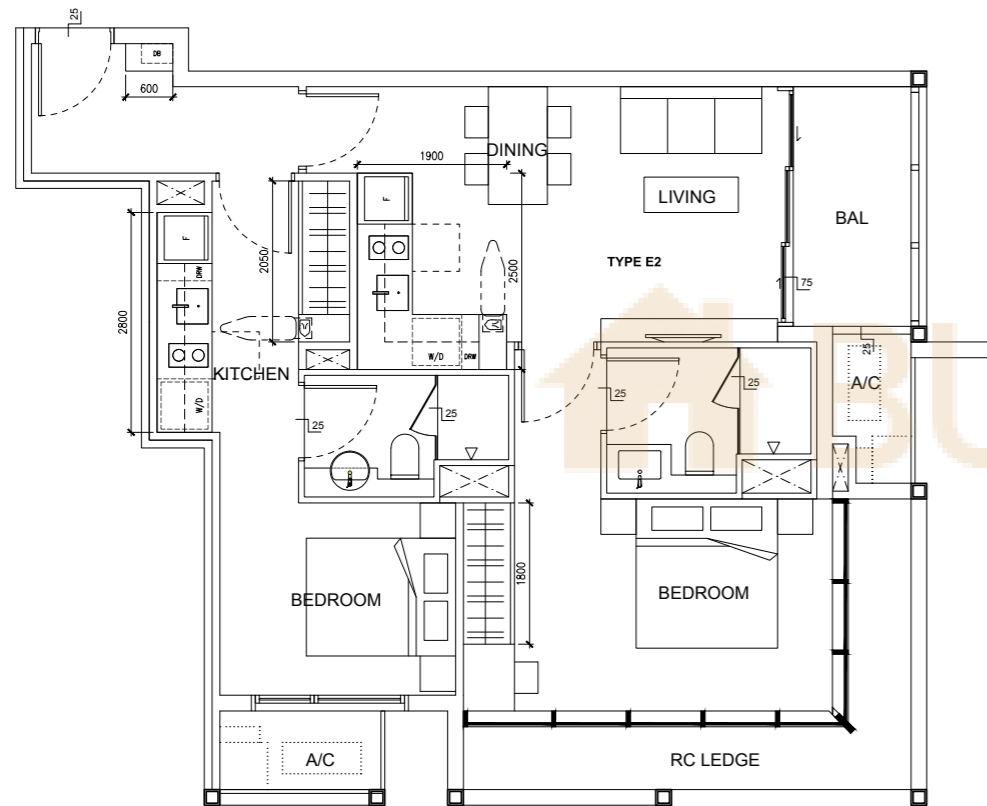


2-BEDROOM DUAL-KEY

TYPE E2

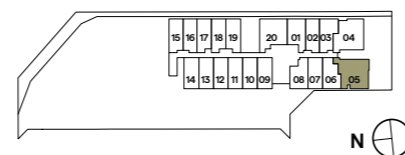
AREA 78.10 sqm (include 4.28 sqm A/C Ledge, 4.83 sqm Balcony)

UNIT(S) #04-05 to #20-05



NOTE:
*Mirror Image

Plans are subject to change/amendments as may be required and/or approved by the Developer and/or the relevant authorities and do not form part of any offer or contract. These are not drawn to scale and are for the purpose of visual presentation only. The balcony shall not be enclosed unless with the approved balcony screen. For an illustration of the approved balcony screen, please refer to APPROVED BALCONY SCREEN DESIGN page of this brochure.

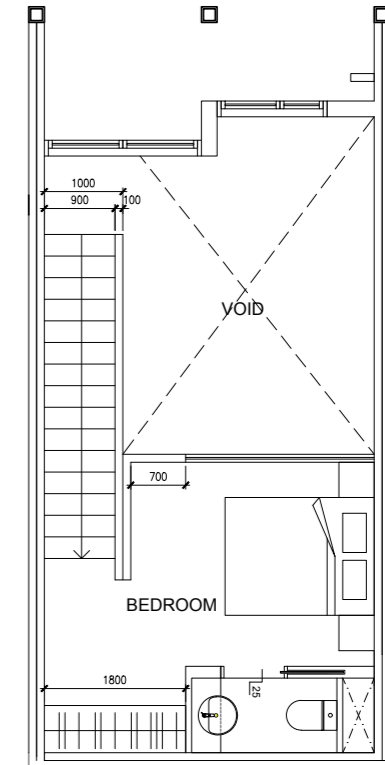
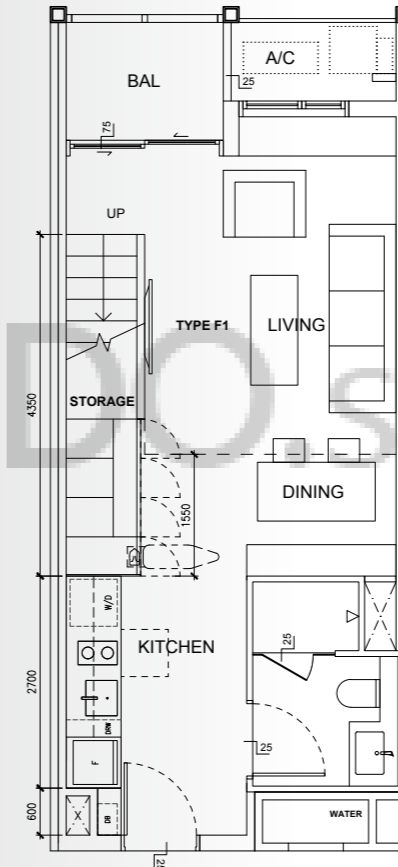


STUDIO LOFT

TYPE F1

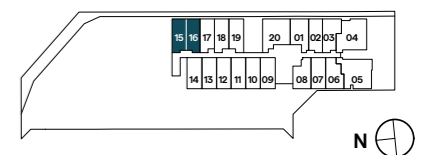
AREA 78.05 sqm (include 2.25 sqm A/C Ledge, 3.25 sqm Balcony)

UNIT(S) #19-15
#19-16 *



NOTE:
*Mirror Image

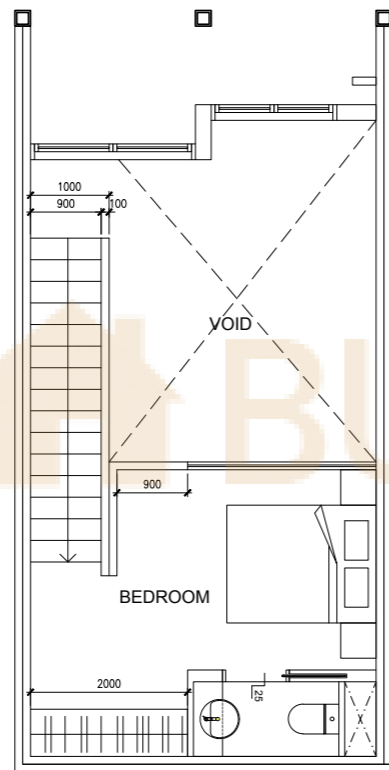
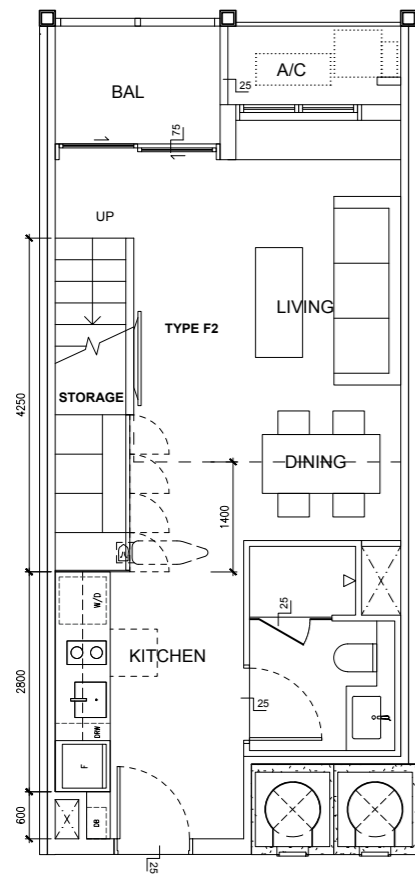
Plans are subject to change/amendments as may be required and/or approved by the Developer and/or the relevant authorities and do not form part of any offer or contract. These are not drawn to scale and are for the purpose of visual presentation only. The balcony shall not be enclosed unless with the approved balcony screen. For an illustration of the approved balcony screen, please refer to APPROVED BALCONY SCREEN DESIGN page of this brochure.



STUDIO LOFT

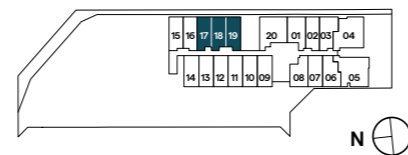
TYPE F2

AREA 80.63 sqm (include 2.45 sqm A/C Ledge, 3.25 sqm Balcony)
 UNIT(S) #19-17
 #19-18
 #19-19 *



NOTE:
 *Mirror Image

Plans are subject to change/amendments as may be required and/or approved by the Developer and/or the relevant authorities and do not form part of any offer or contract. These are not drawn to scale and are for the purpose of visual presentation only. The balcony shall not be enclosed unless with the approved balcony screen. For an illustration of the approved balcony screen, please refer to APPROVED BALCONY SCREEN DESIGN page of this brochure.



MULTIPLE SMART FEATURES FOR THE MULTI-HYPHENATES

There is no place like home. For the multi-hyphenates of tomorrow, this certainly rings true here in TMW Maxwell where homes are fitted with multiple smart features that enable and empower simultaneous live, work and play lifestyles.



SMART HOME HUB

A centralised control hub that connects to all compatible devices seamlessly.



DIGITAL LOCKSET

Added convenience of touchless and remote door security.



IP CAMERA

Remote monitoring of in-house activities for extra peace of mind.



SMART AIR CONDITIONER CONTROLS

Wireless control over air conditioning optimises comfort levels even before every arrival home.