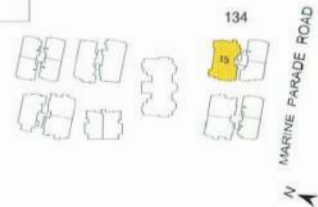
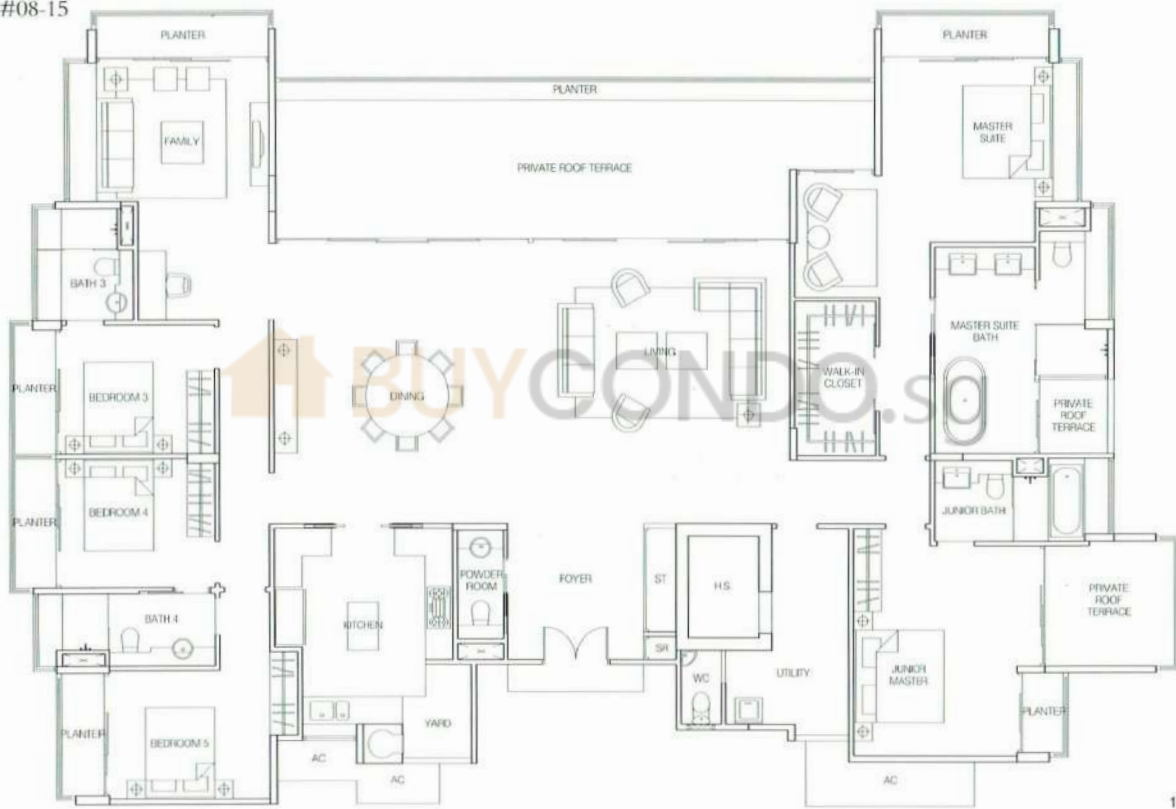


# Type PH1

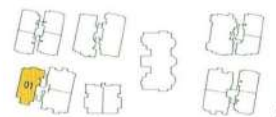
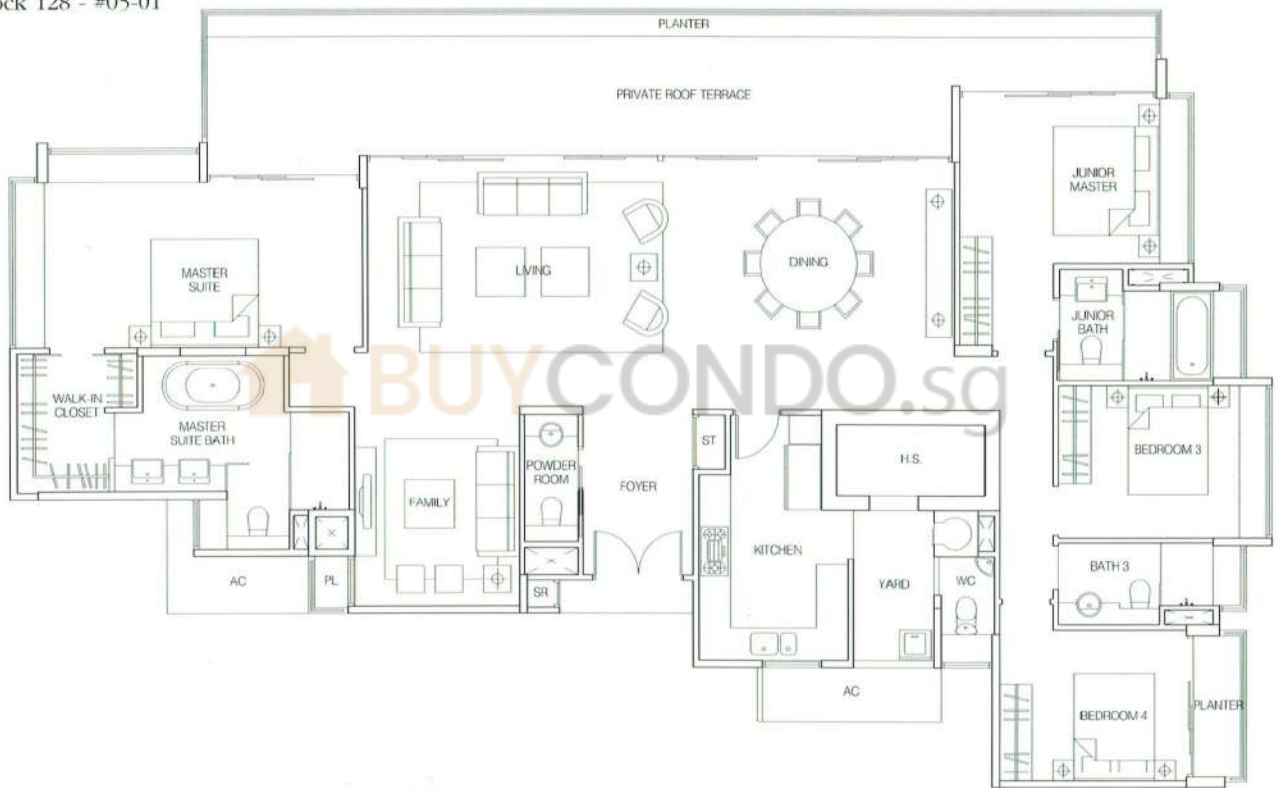
360 sq m/3875 sq ft  
5-Bedroom Penthouse  
Block 134 - #08-15



The above plans are subject to change as may be approved by the relevant authority. Areas are approximate measurements and subject to final survey. Plans are not to scale.

# Type PH4

257 sq m/2766 sq ft  
 4-Bedroom Penthouse  
 Block 128 - #05-01



N  
 MARINE PARADE ROAD

The above plans are subject to change as may be approved by the relevant authority. Areas are approximate measurements and subject to final survey. Plans are not to scale.

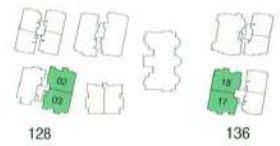
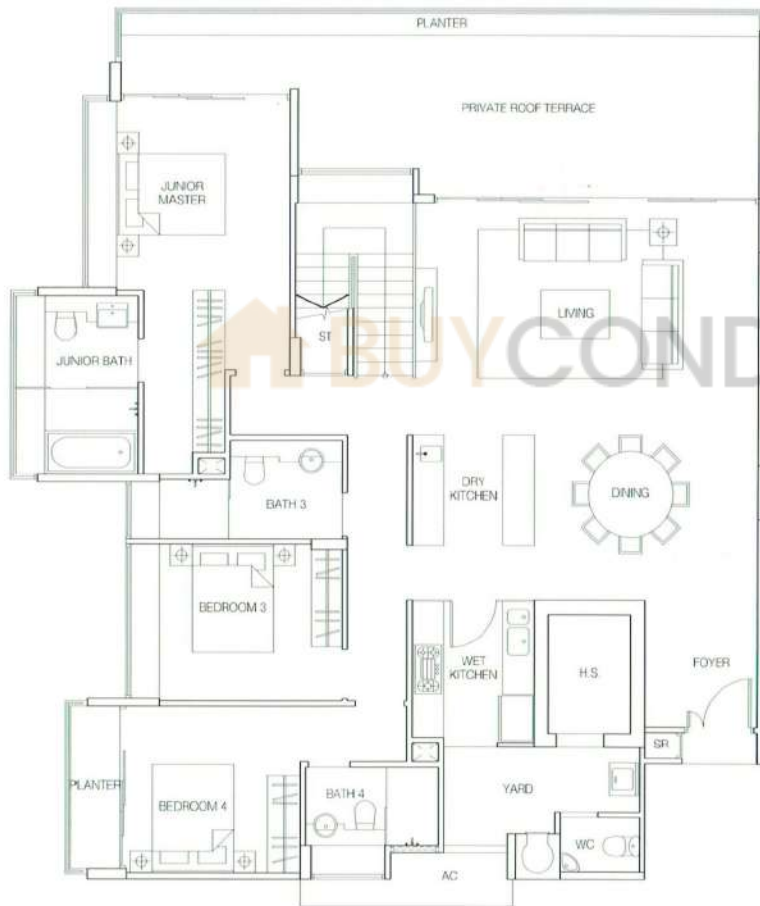
## Type DP1 (Lower Storey)

299 sq m/3218 sq ft

4-Bedroom Duplex

Block 128 - #05-02, #05-03

Block 136 - #05-17, #05-18



MARINE PARADE ROAD

The above plans are subject to change as may be approved by the relevant authority. Areas are approximate measurements and subject to final survey. Plans are not to scale.

## Type C1

183 sq m/1970 sq ft

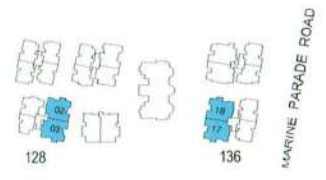
4-Bedroom Apartment

Block 128 - #02-02 to #04-02

#02-03 to #04-03

Block 136 - #02-17 to #04-17

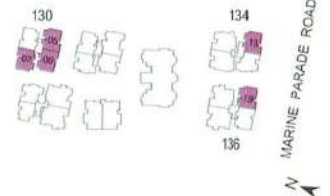
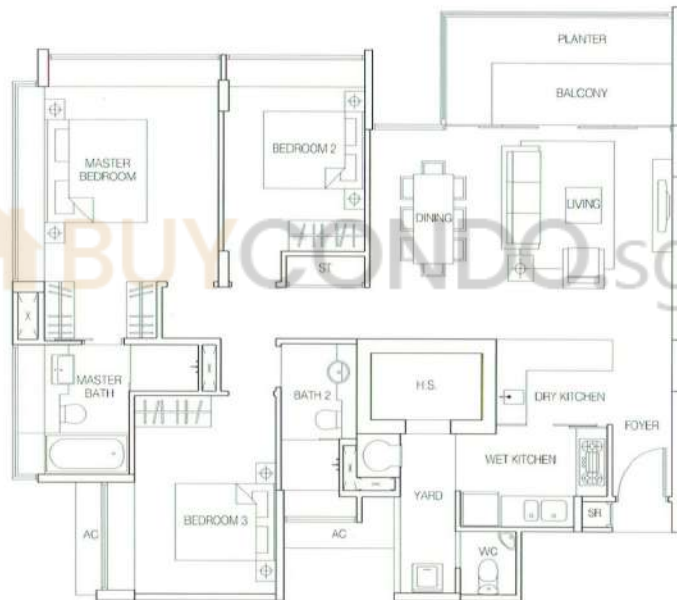
#02-18 to #04-18



The above plans are subject to change as may be approved by the relevant authority. Areas are approximate measurements and subject to final survey. Plans are not to scale.

## Type B1

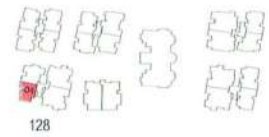
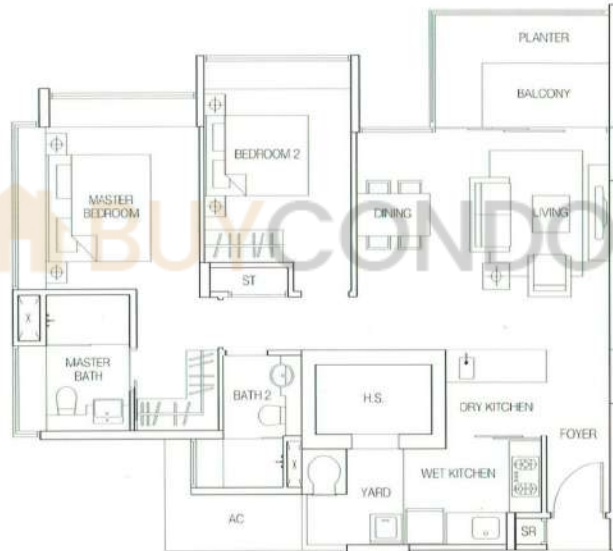
129 sq m / 1389 sq ft  
3-Bedroom Apartment  
Block 130 - #02-05 to #04-05  
          #02-06 to #04-06  
          #02-07 to #04-07  
Block 134 - #02-13 to #07-13  
Block 136 - #02-19 to #04-19



The above plans are subject to change as may be approved by the relevant authority. Areas are approximate measurements and subject to final survey. Plans are not to scale.

# Type A1

97 sq m / 1044 sq ft  
2-Bedroom Apartment  
Block 128 - #02-04 to #04-04



MARINE PARADE ROAD

The above plans are subject to change as may be approved by the relevant authority. Areas are approximate measurements and subject to final survey. Plans are not to scale.