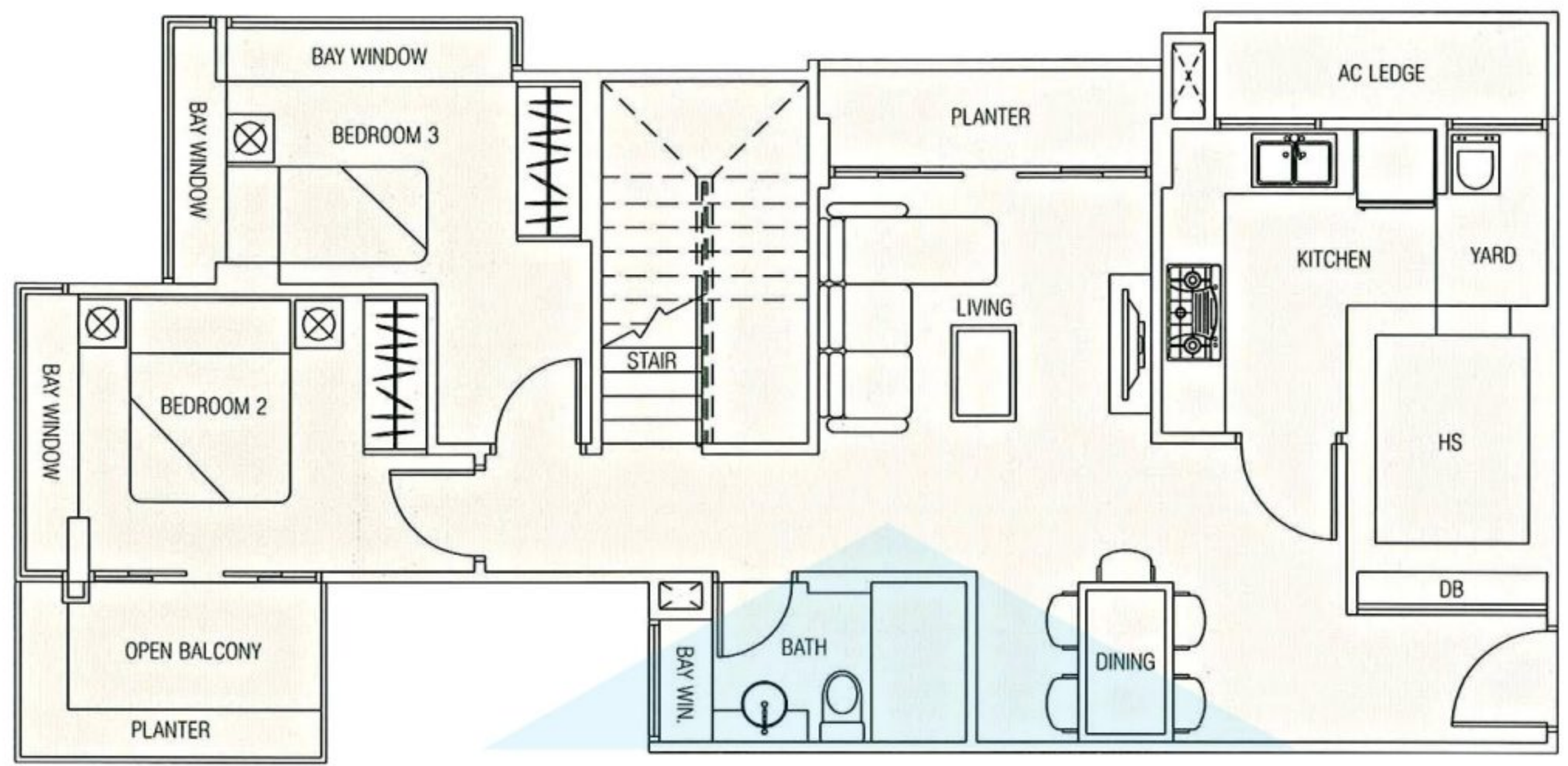
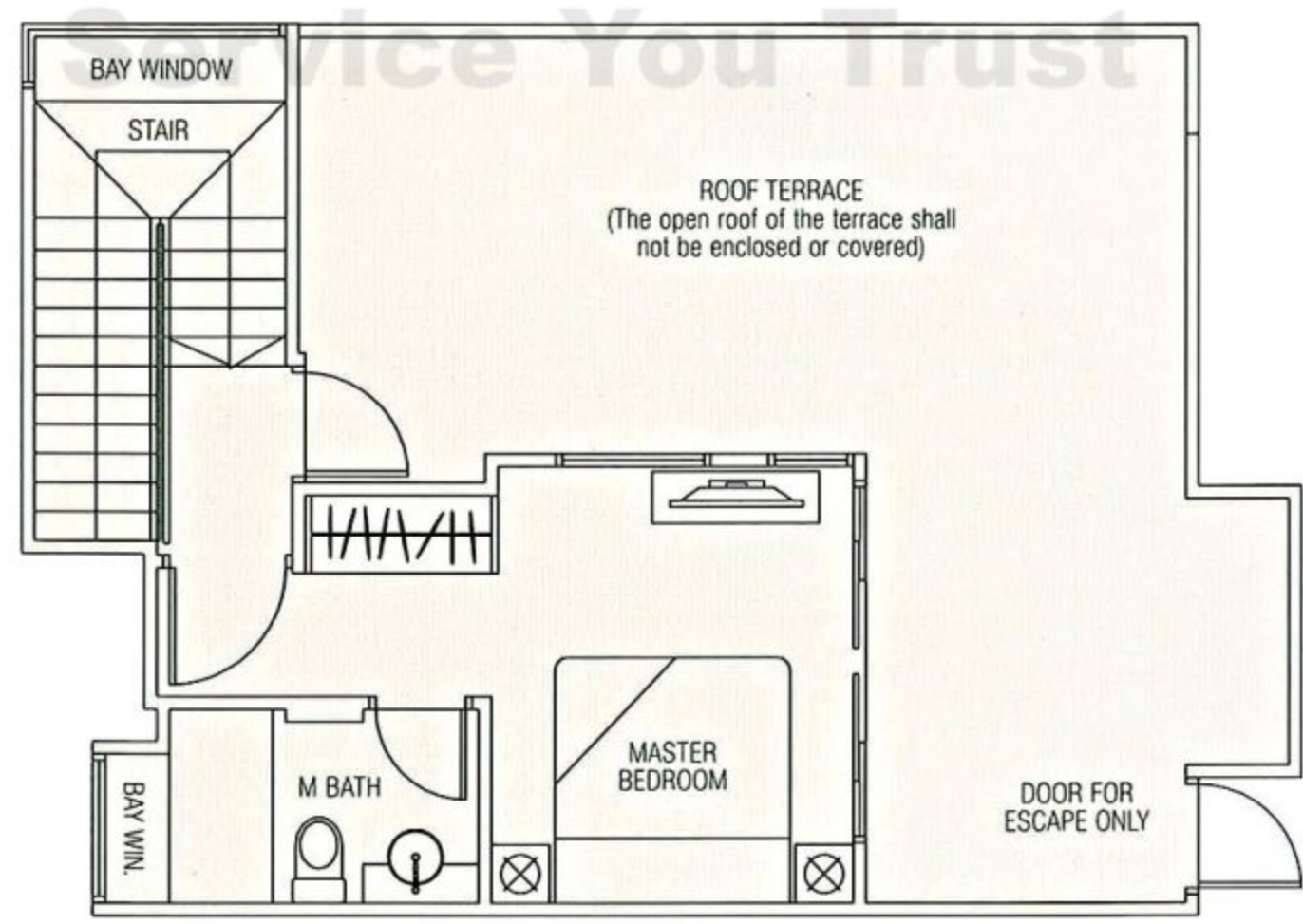


3-Bedroom Penthouse (150 sqm/1615 sq ft)  
#05-02

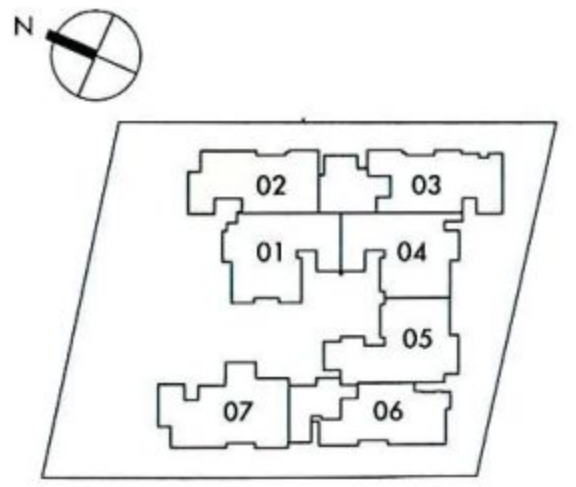
Type A1-P



LOWER STOREY



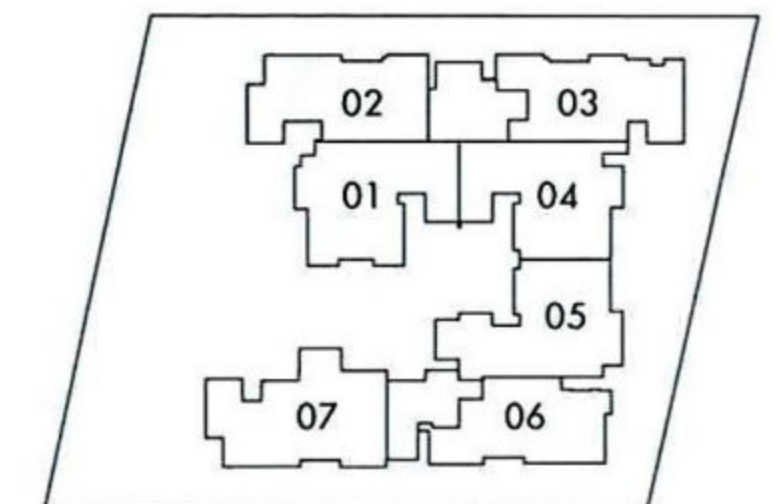
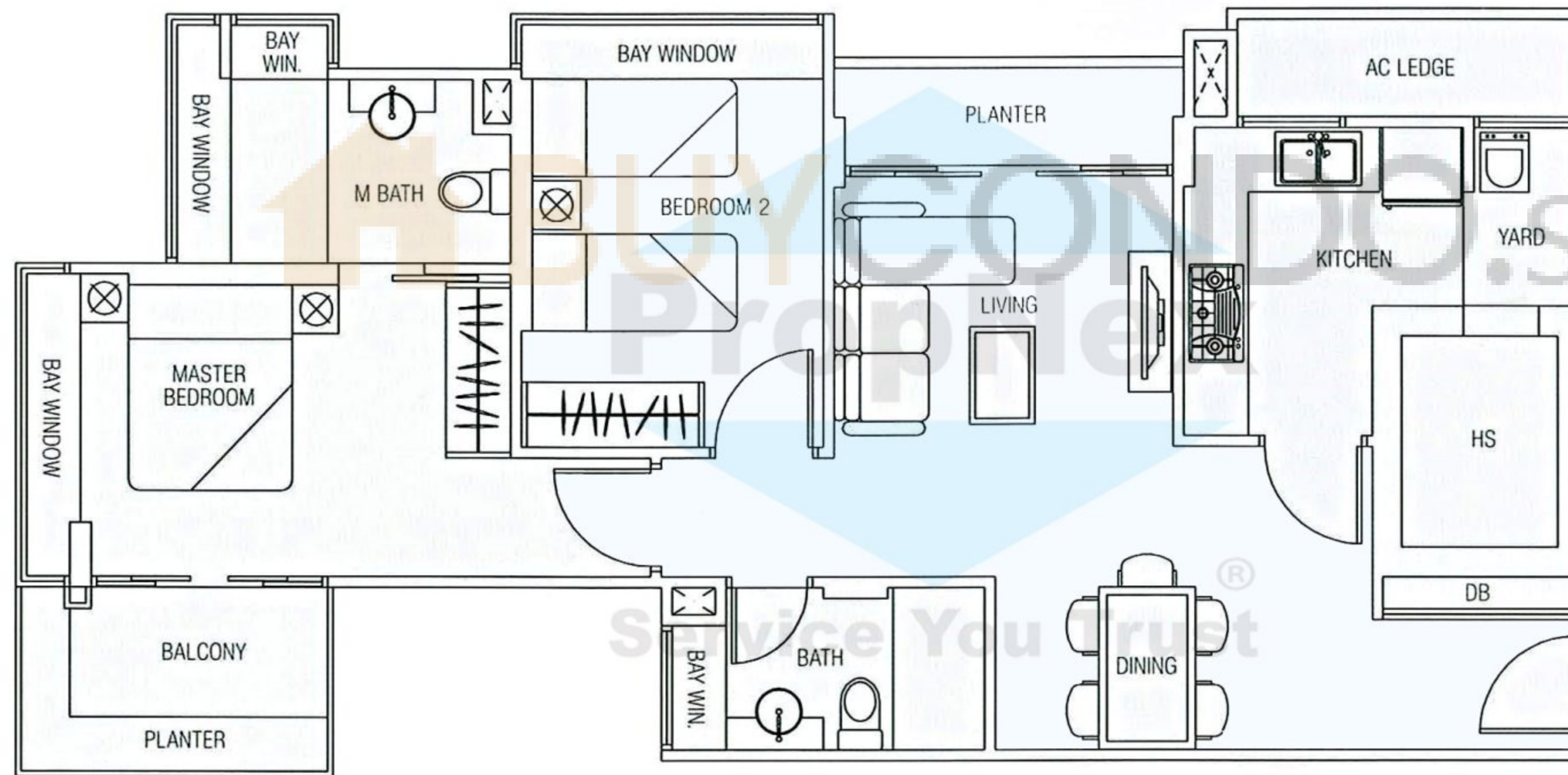
UPPER STOREY



The plans are subject to change as may be required or approved by authorities. These are not drawn to scale and are for the purpose of visual presentation of the different layouts that are available. Areas are estimates only and are subject to final survey.

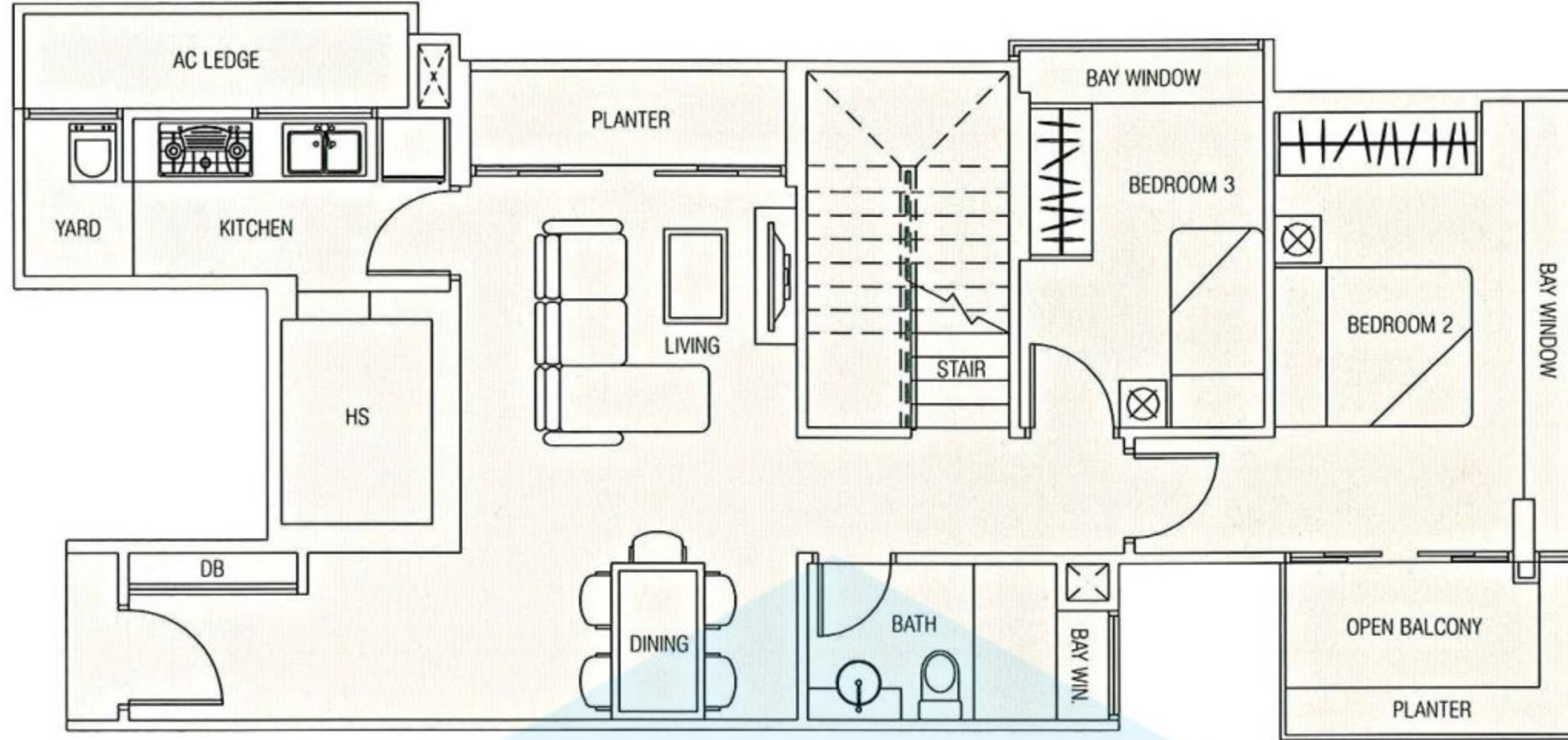
2-Bedroom (88 sqm/947 sq ft)  
#02-02, #03-02, #04-02

Type A1

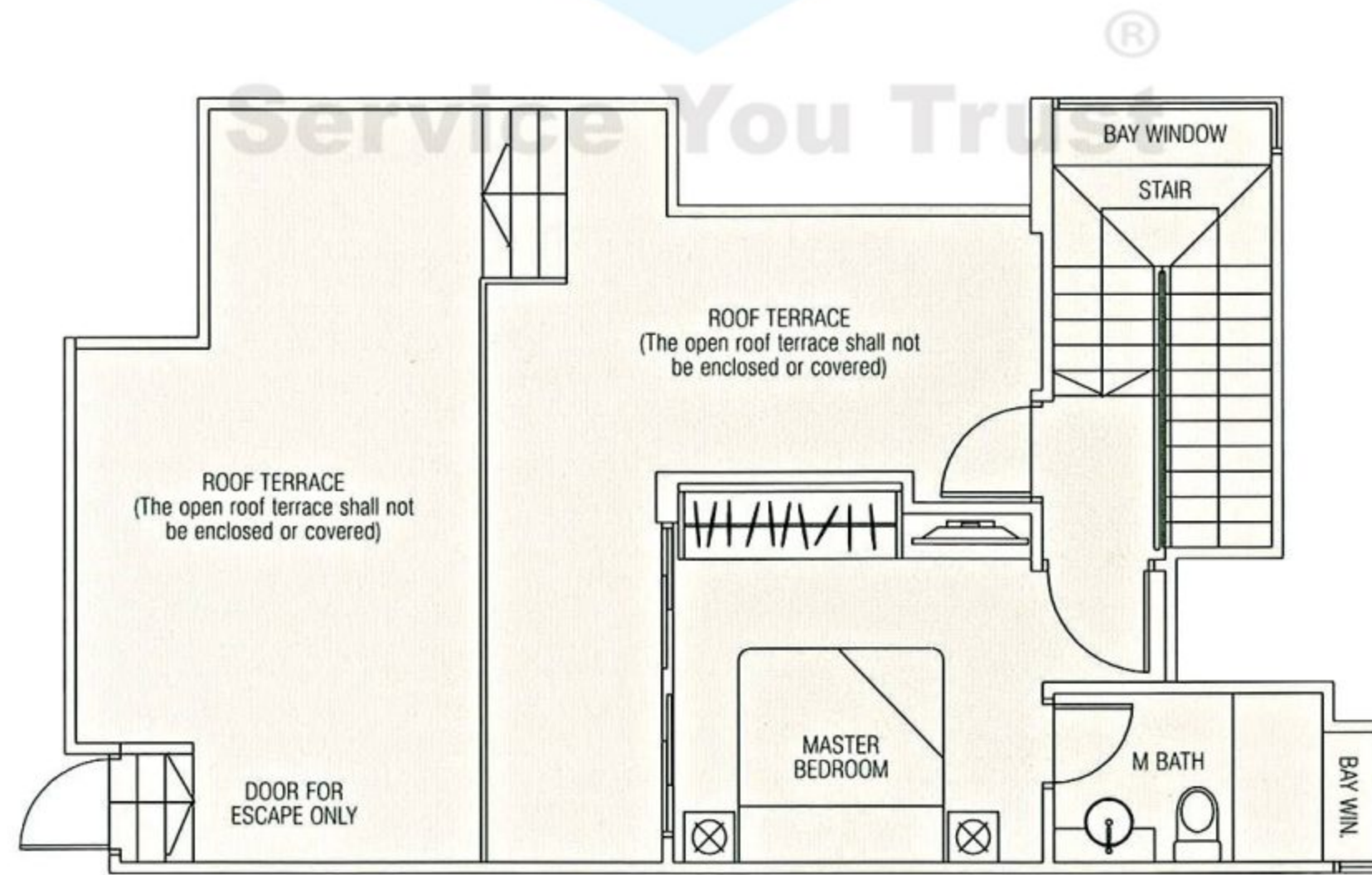


Type A2-P

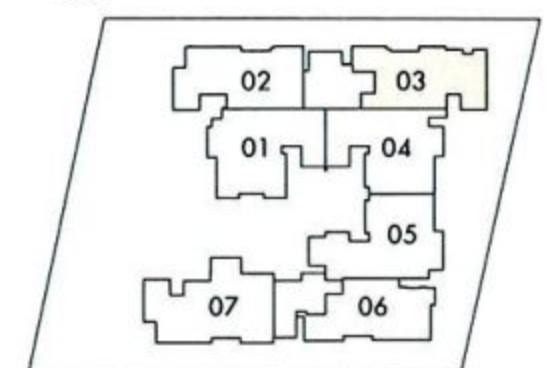
3-Bedroom Penthouse (157 sqm/1690 sq ft)  
#05-03



LOWER STOREY



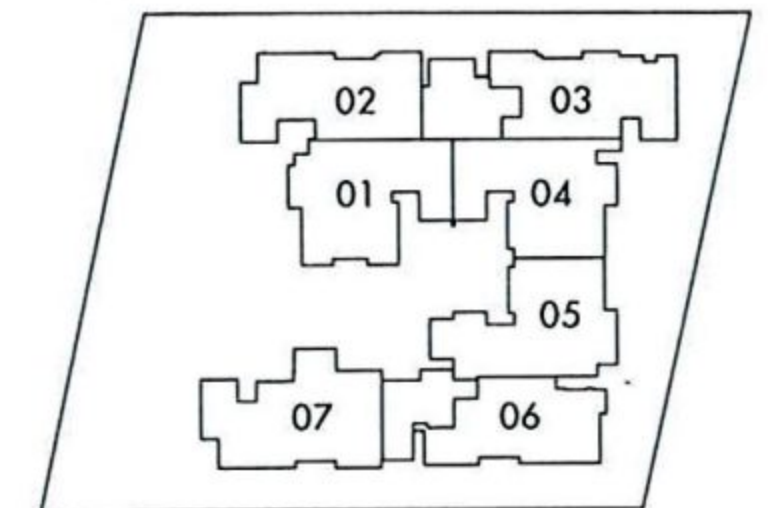
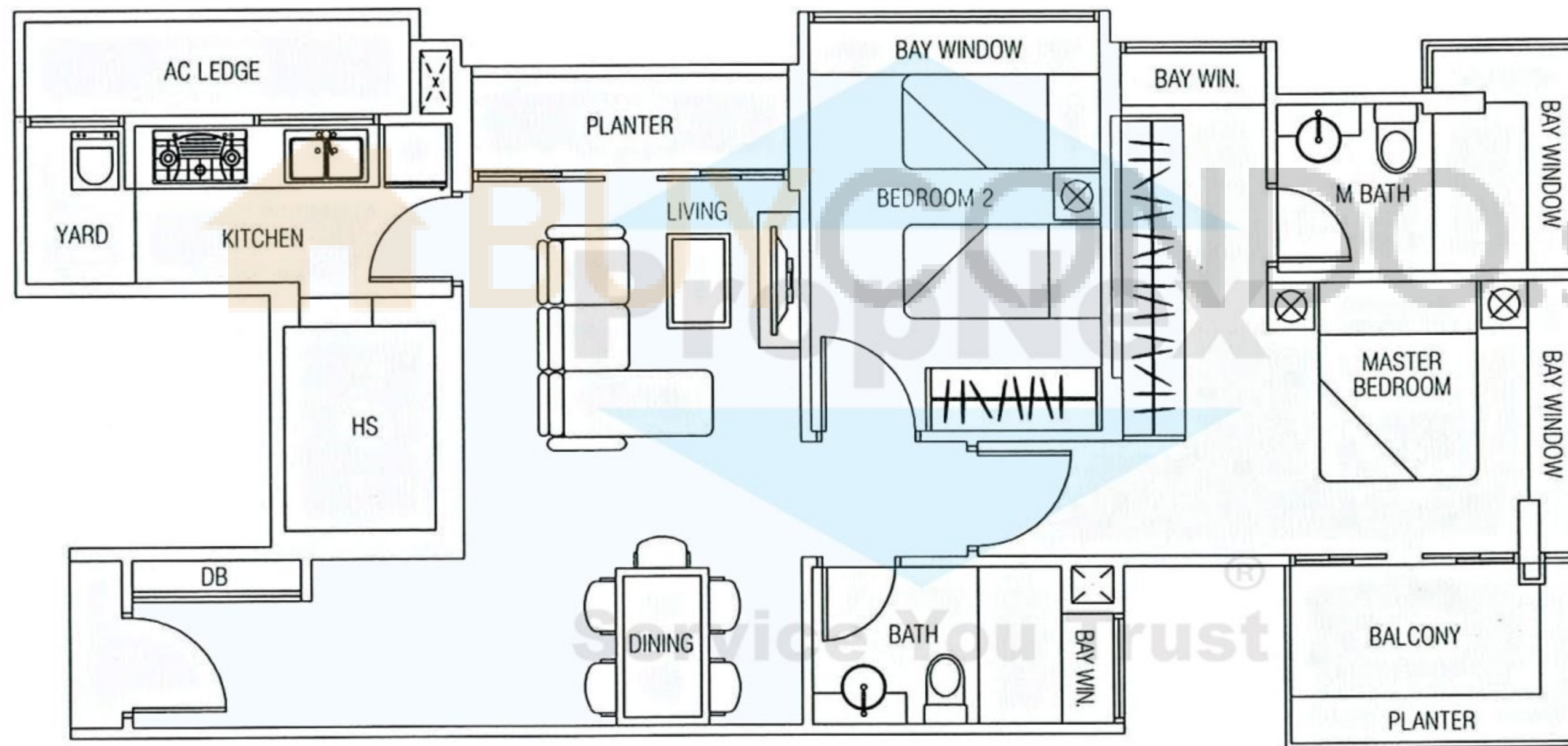
UPPER STOREY



The plans are subject to change as may be required or approved by authorities. These are not drawn to scale and are for the purpose of visual presentation of the different layouts that are available. Areas are estimates only and are subject to final survey.

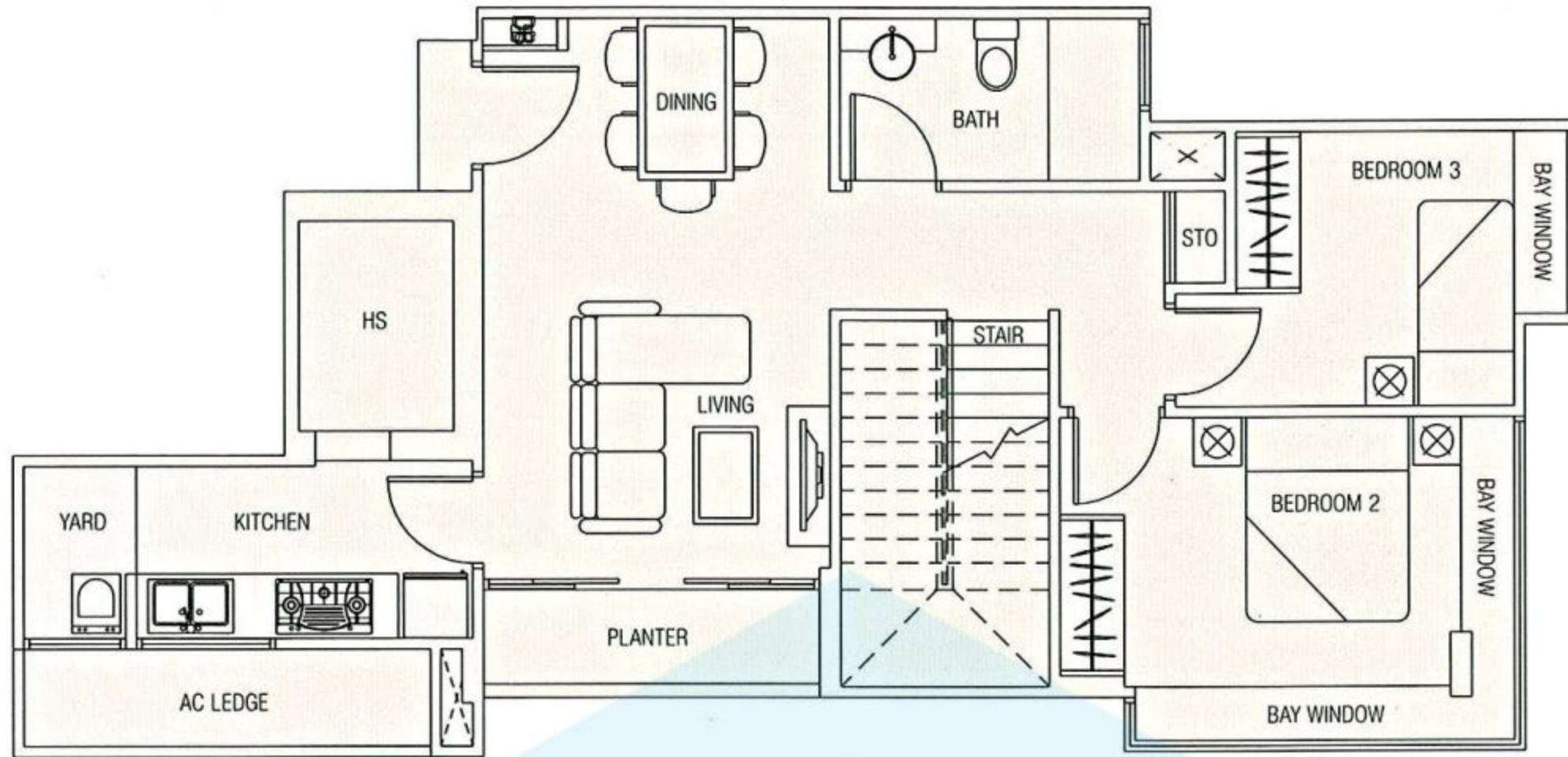
Type A2

2-Bedroom (90 sqm/969 sq ft)  
#02-03, #03-03, #04-03

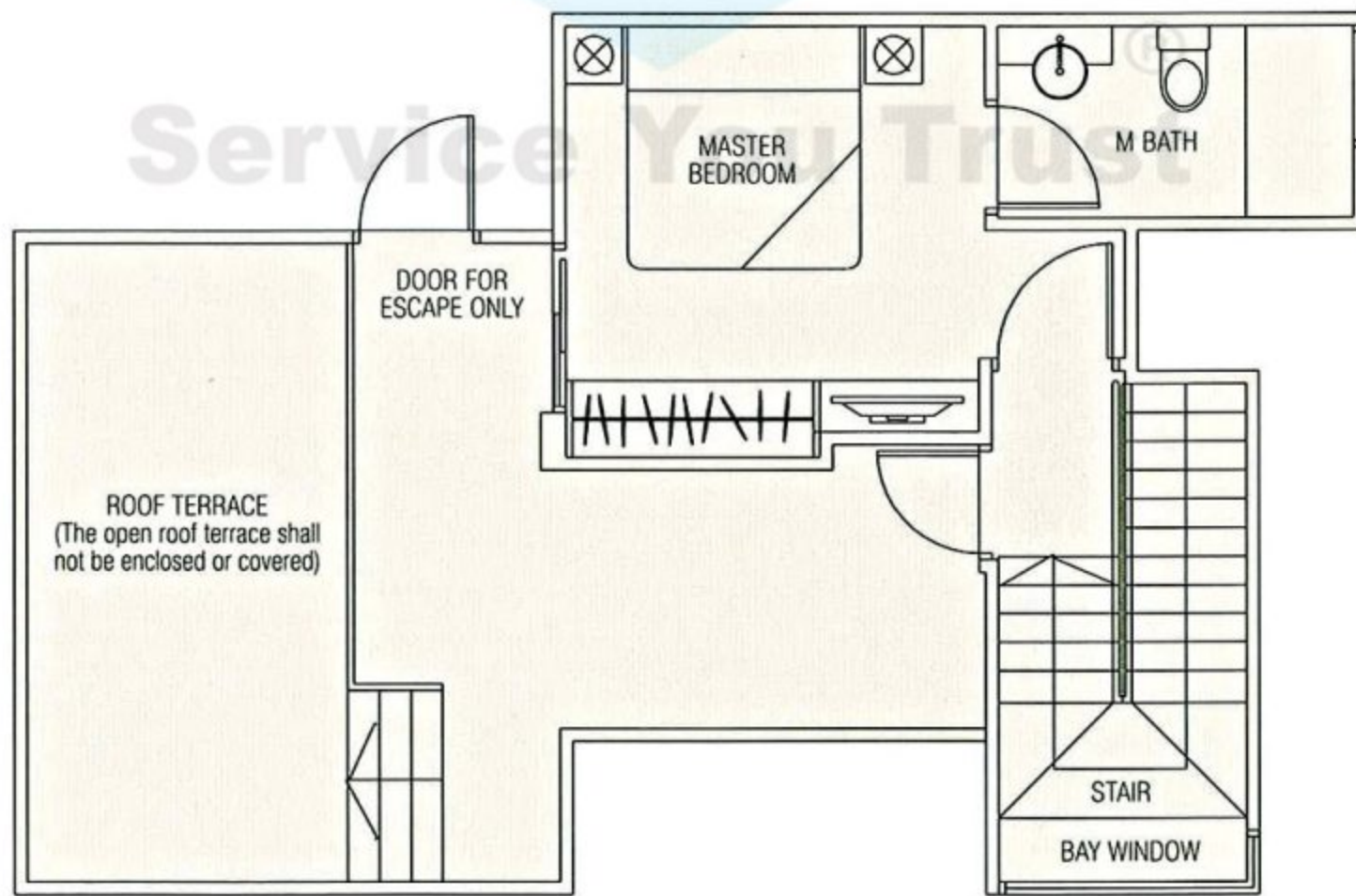


Type A4-P

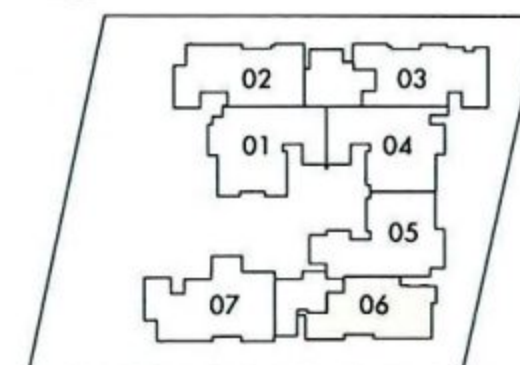
3-Bedroom Penthouse (133 sqm/1432 sq ft)  
#05-06



LOWER STOREY



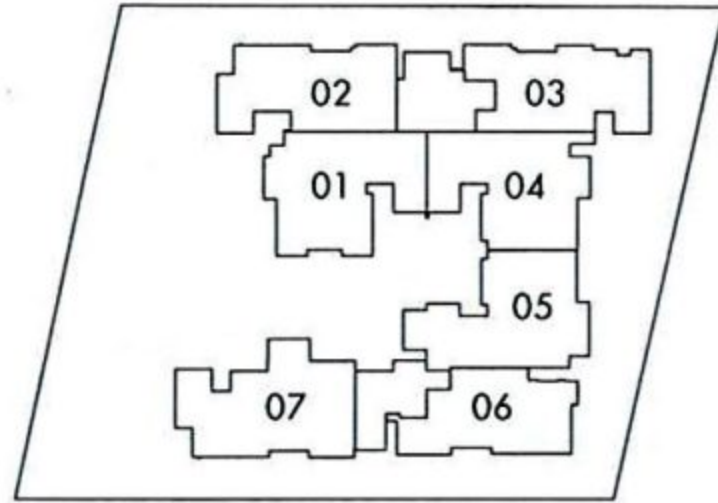
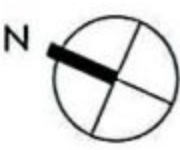
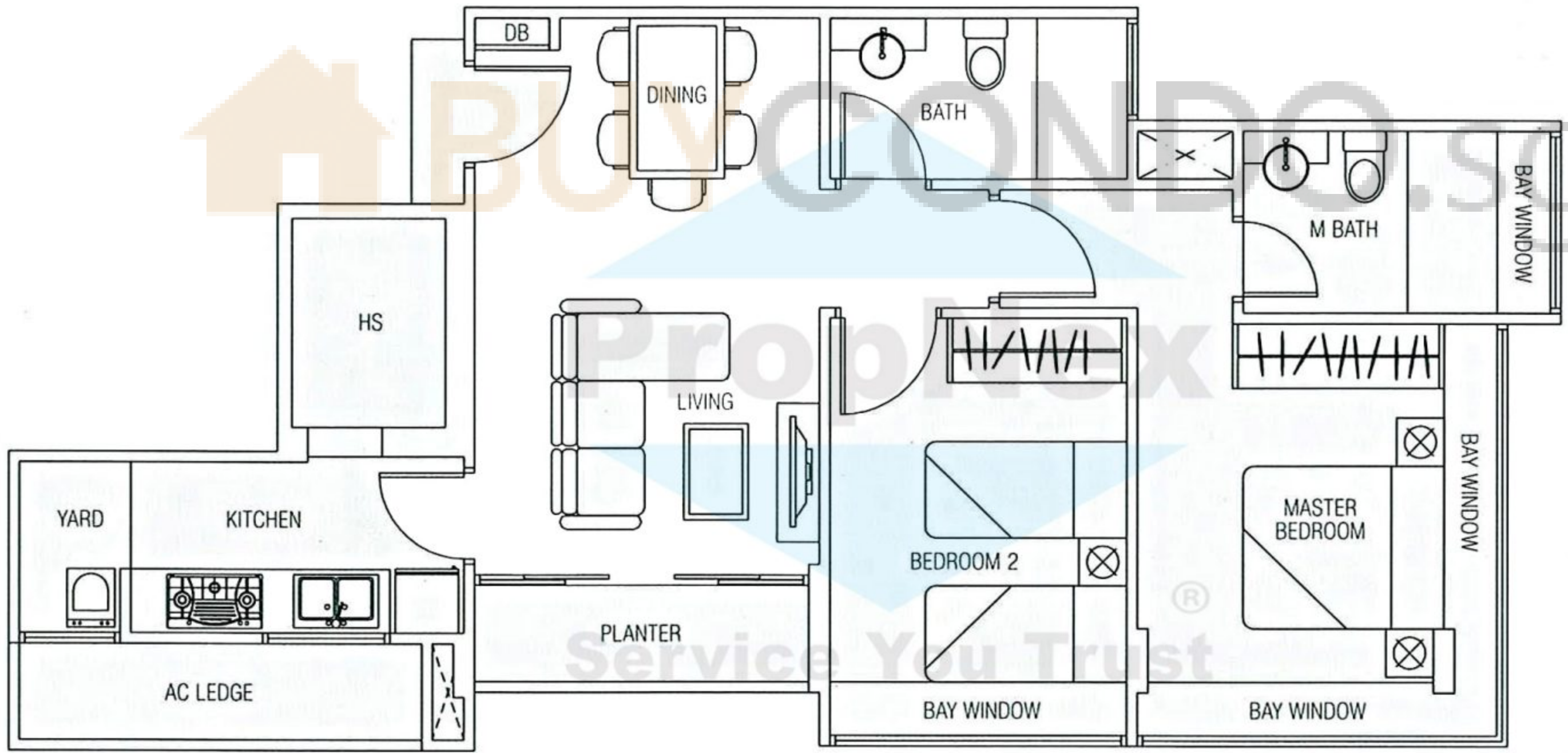
UPPER STOREY



The plans are subject to change as may be required or approved by authorities. These are not drawn to scale and are for the purpose of visual presentation of the different layouts that are available. Areas are estimates only and are subject to final survey.

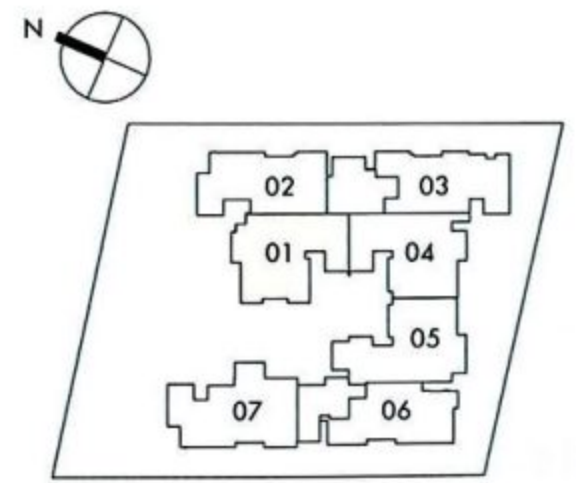
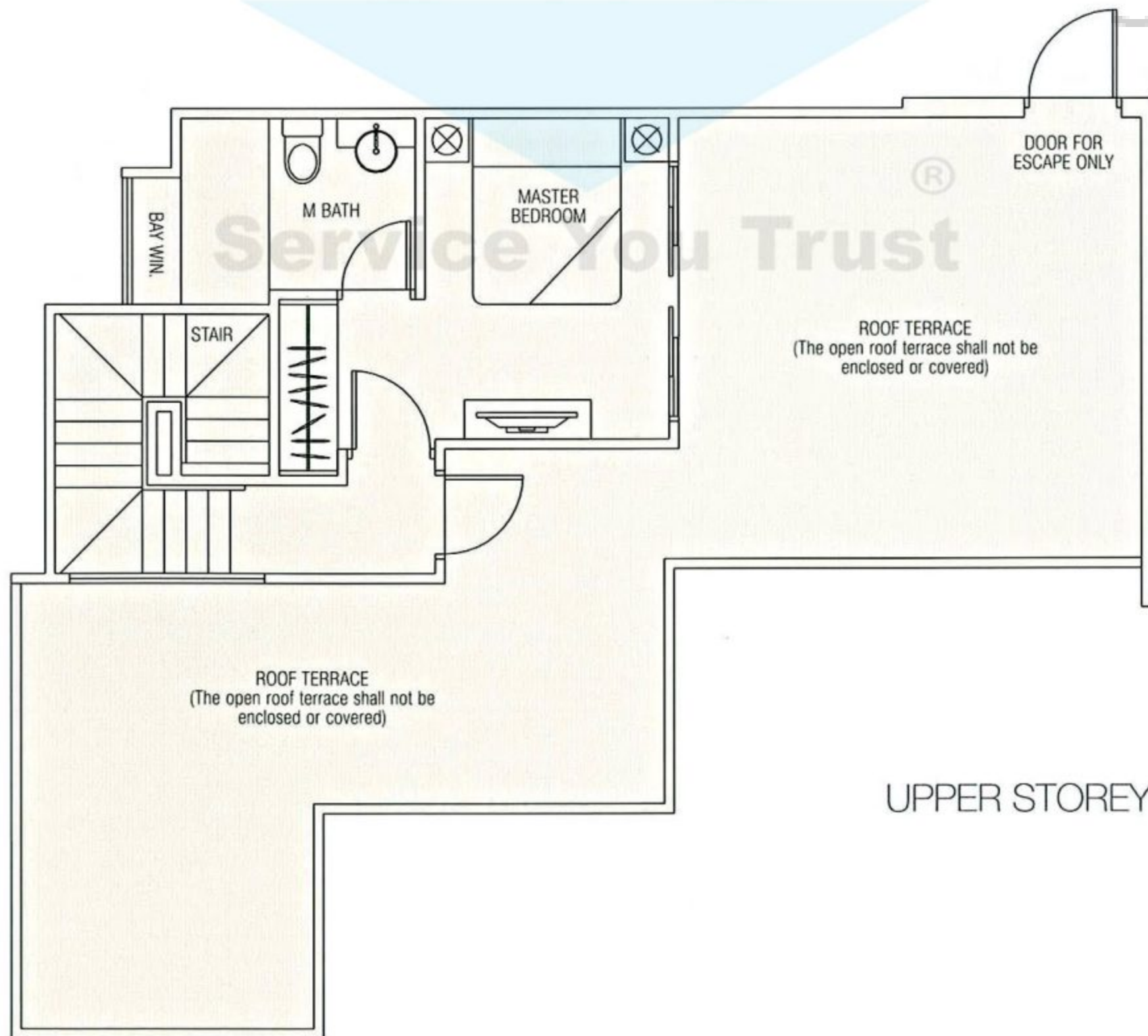
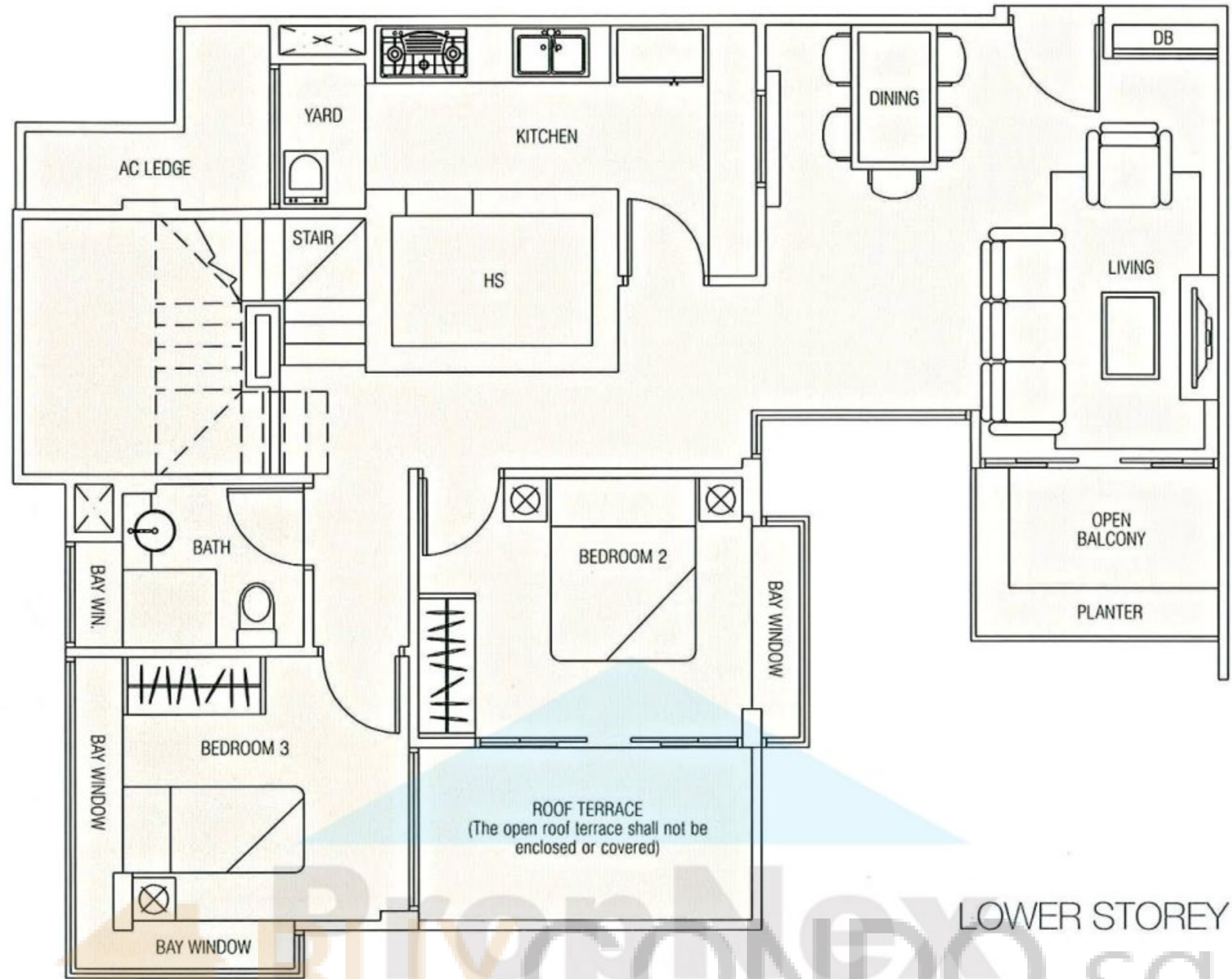
2-Bedroom (79 sqm/850 sq ft)  
#02-06, #03-06, #04-06

Type A4



3-Bedroom Penthouse (167 sqm/1798 sq ft)  
#05-01

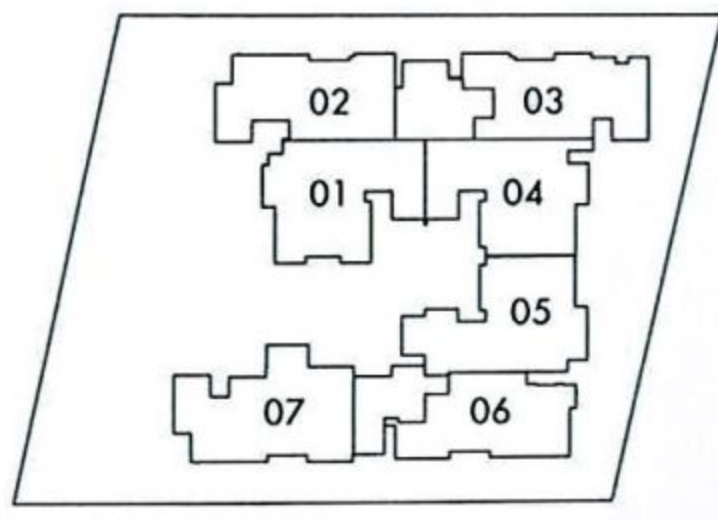
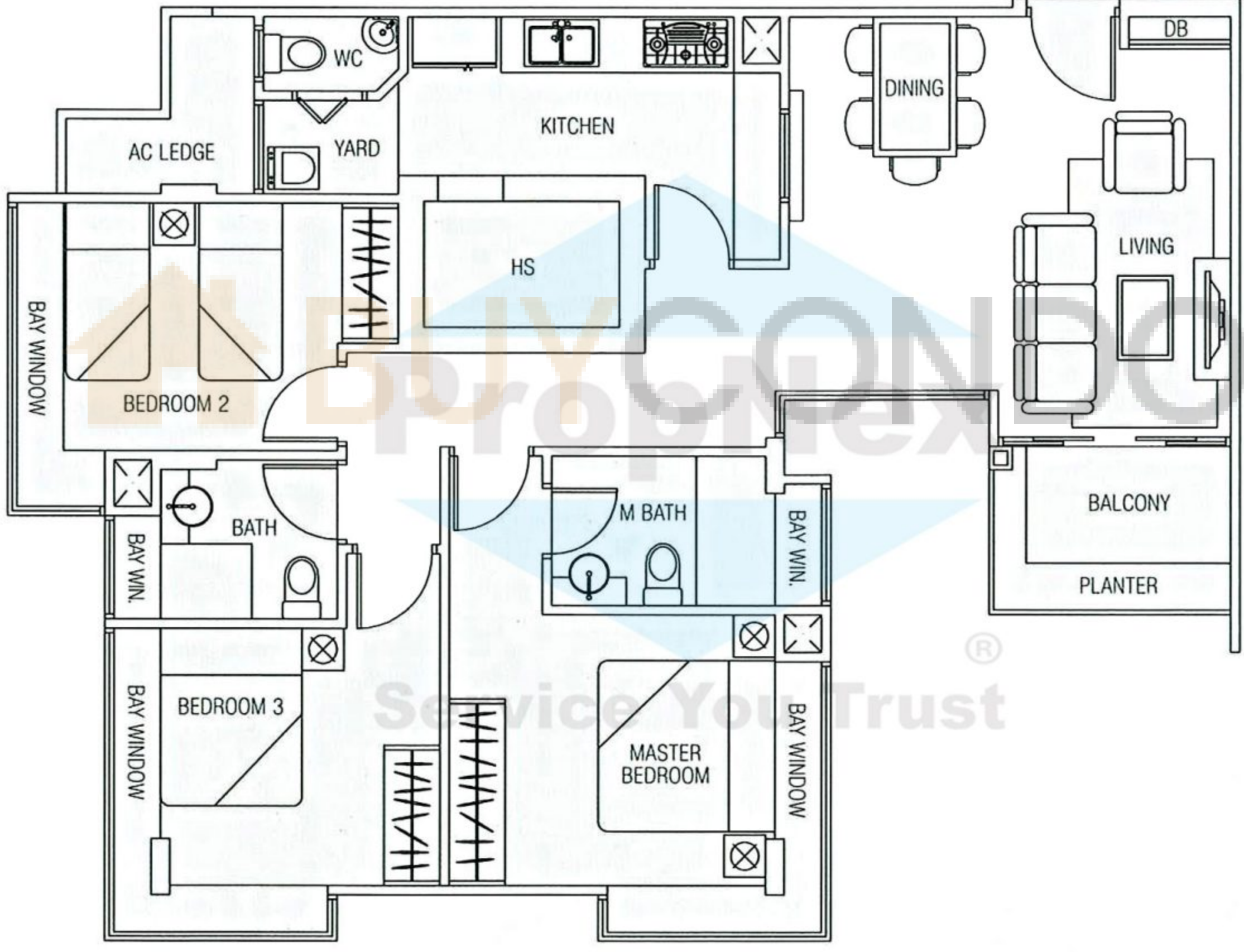
Type B1-P



The plans are subject to change as may be required or approved by authorities. These are not drawn to scale and are for the purpose of visual presentation of the different layouts that are available. Areas are estimates only and are subject to final survey.

3-Bedroom (102 sqm/1098 sq ft)  
#02-01, #03-01, #04-01

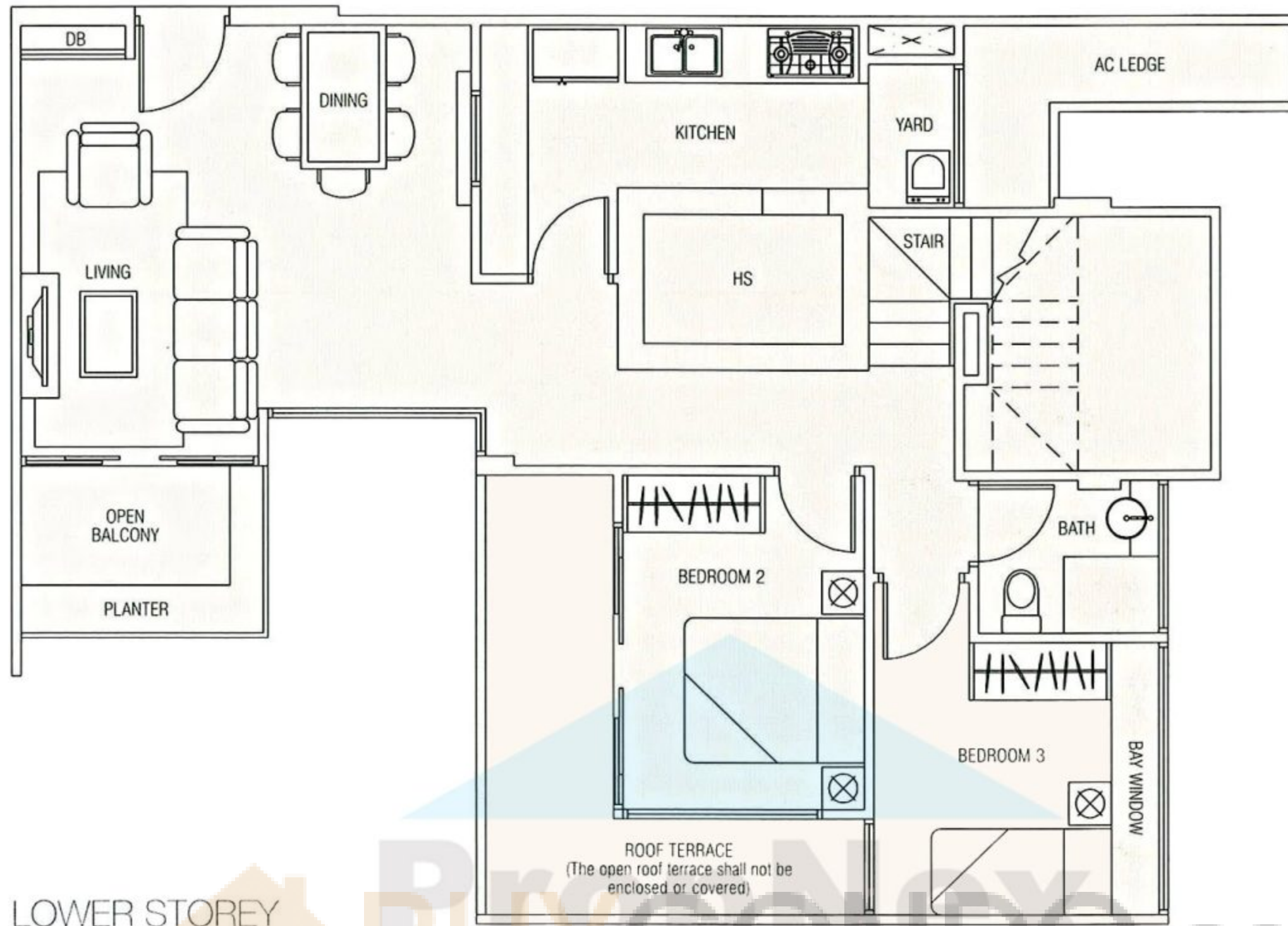
Type B1



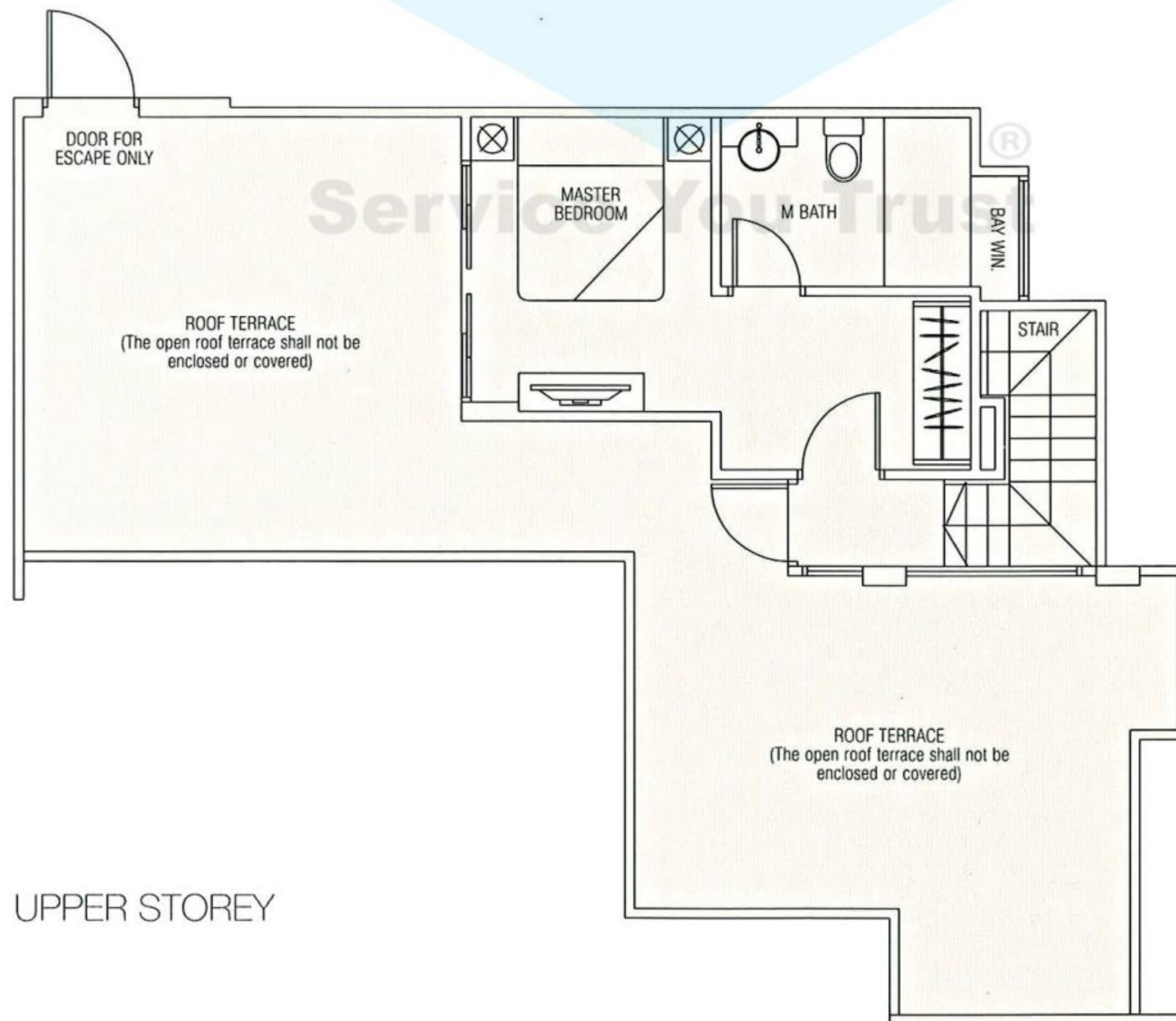


Type B2-P

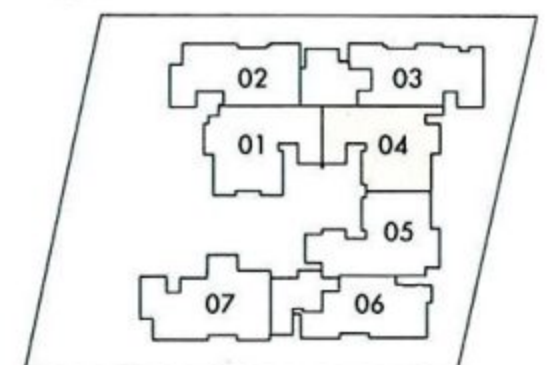
3-Bedroom Penthouse (167 sqm/1798 sq ft)  
#05-04



LOWER STOREY



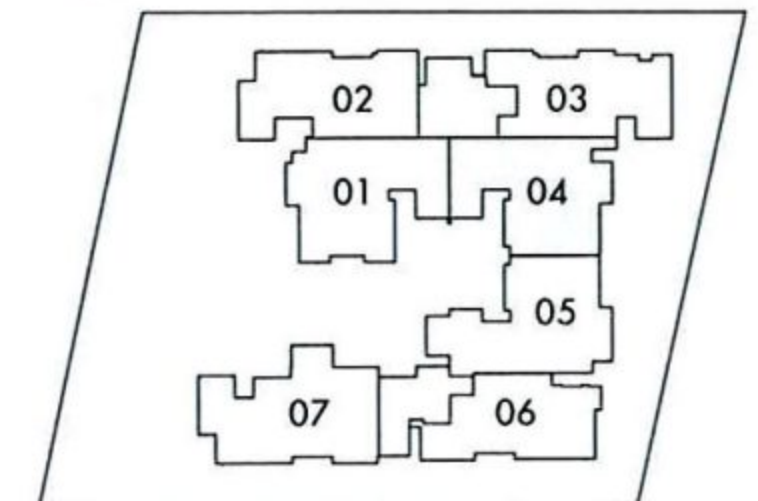
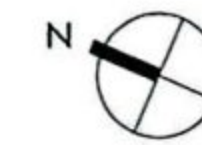
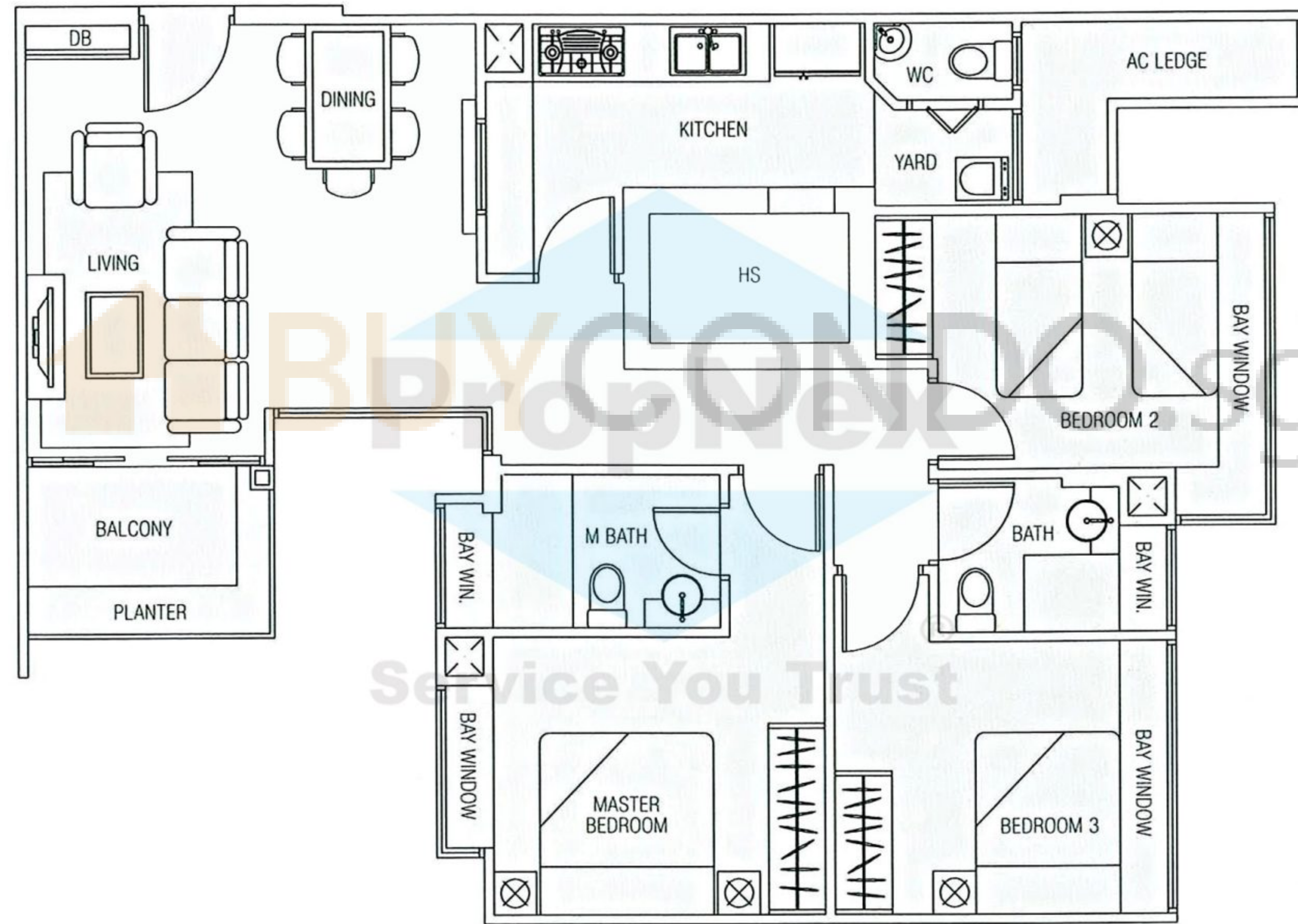
UPPER STOREY



The plans are subject to change as may be required or approved by authorities. These are not drawn to scale and are for the purpose of visual presentation of the different layouts that are available. Areas are estimates only and are subject to final survey.

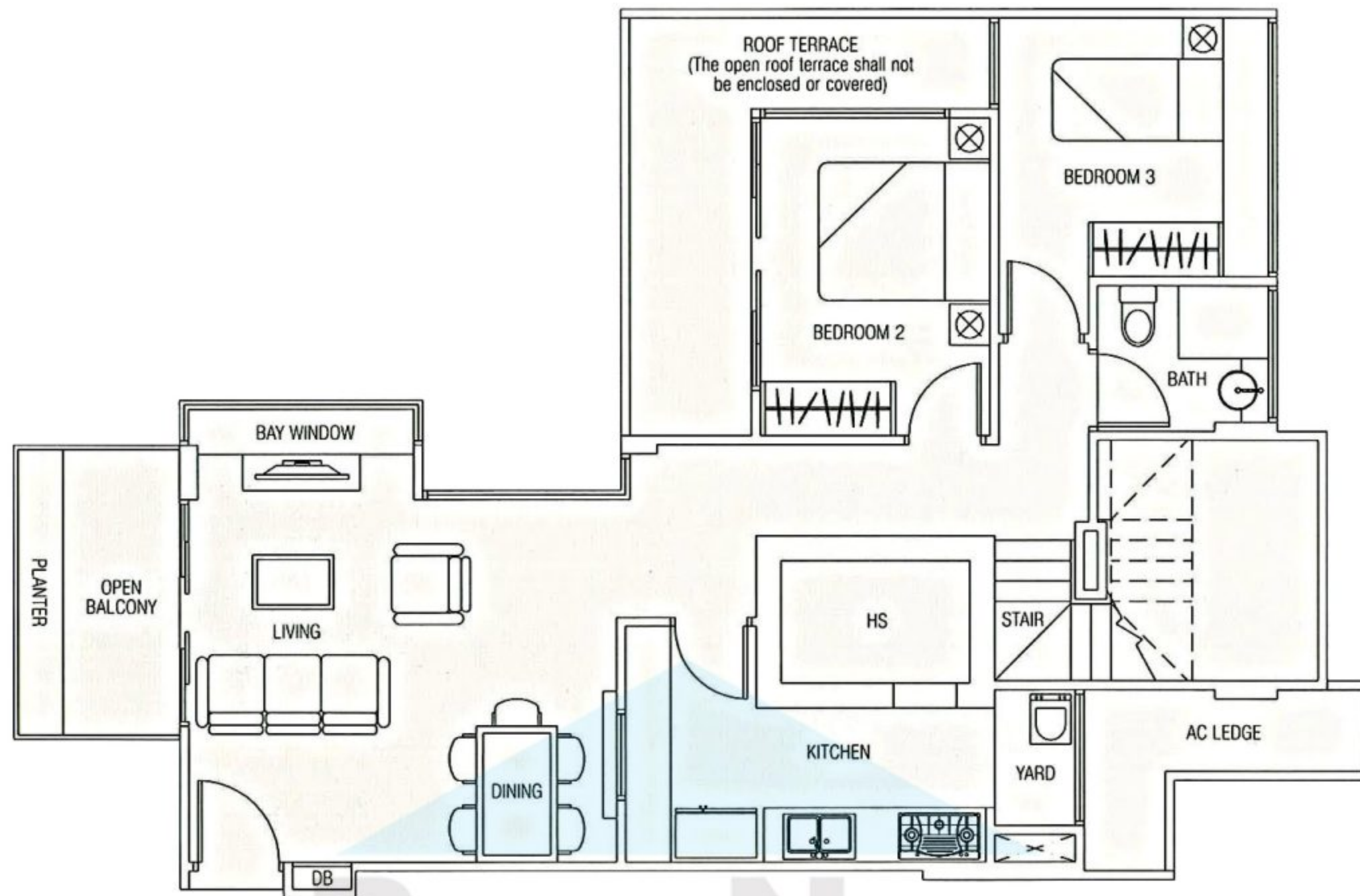
Type B2

3-Bedroom (100 sqm/1076 sq ft)  
#02-04, #03-04, #04-04

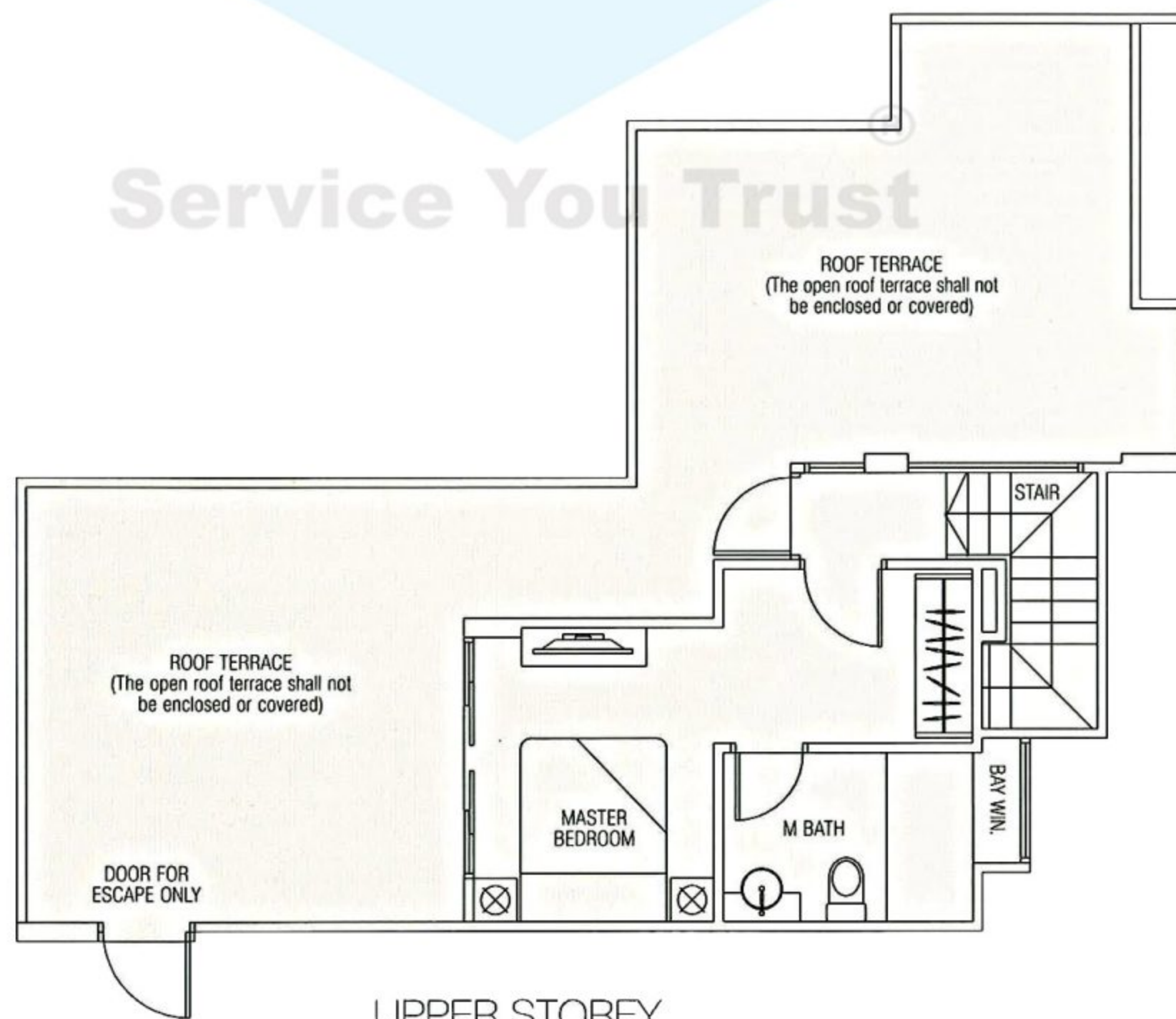


3-Bedroom Penthouse (168 sqm/1808 sq ft)  
#05-05

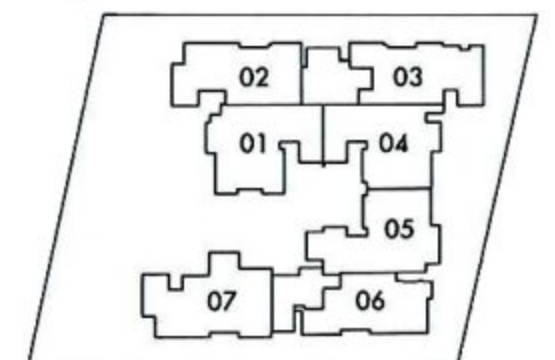
Type B3-P



LOWER STOREY



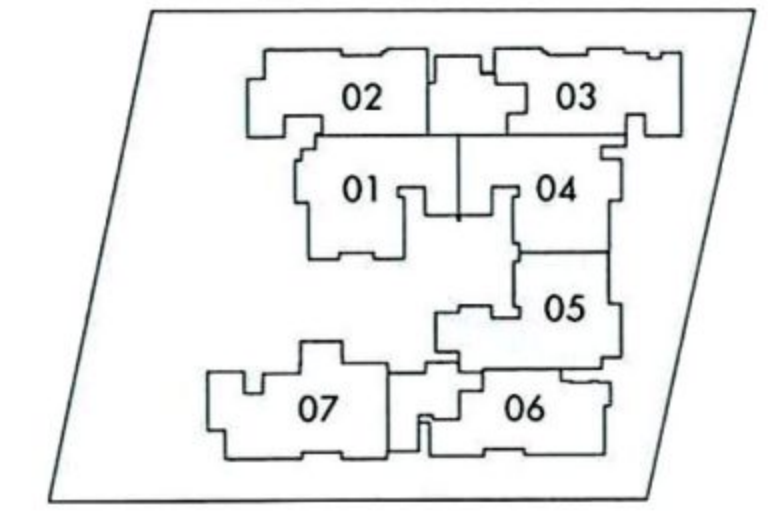
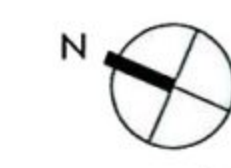
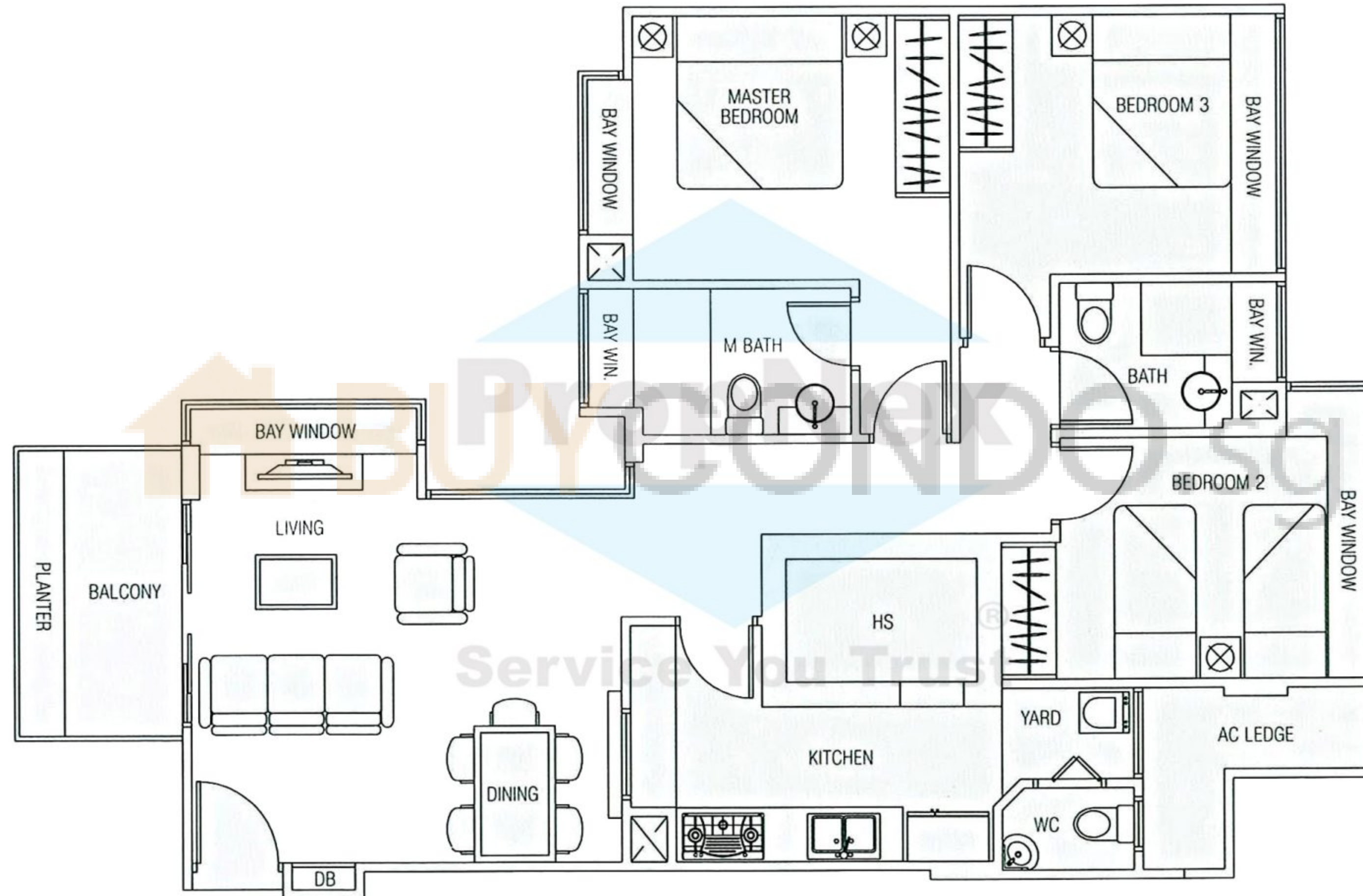
UPPER STOREY



The plans are subject to change as may be required or approved by authorities. These are not drawn to scale and are for the purpose of visual presentation of the different layouts that are available. Areas are estimates only and are subject to final survey.

Type B3

3-Bedroom (103 sqm/1109 sq ft)  
#02-05, #03-05, #04-05



1-Bedroom (66 sqm/710 sq ft)  
#01-06

Type C1-G

