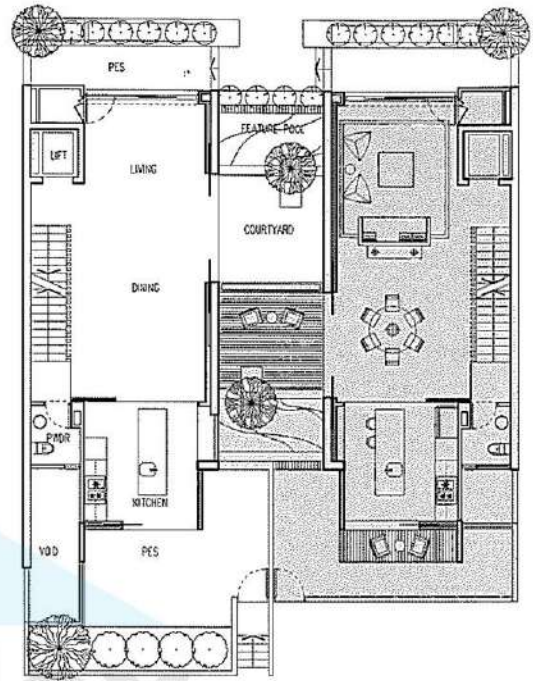


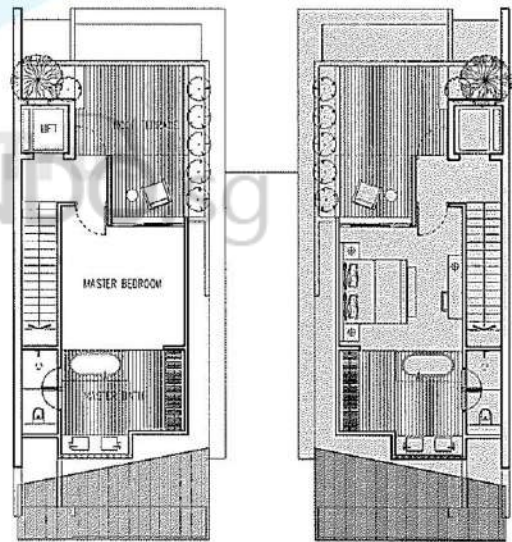
BASEMENT



LEVEL ONE



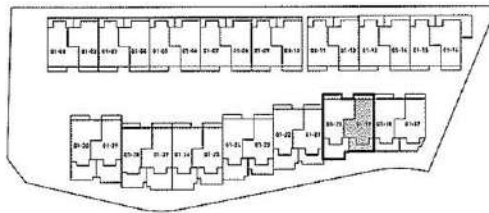
LEVEL TWO



ATTIC

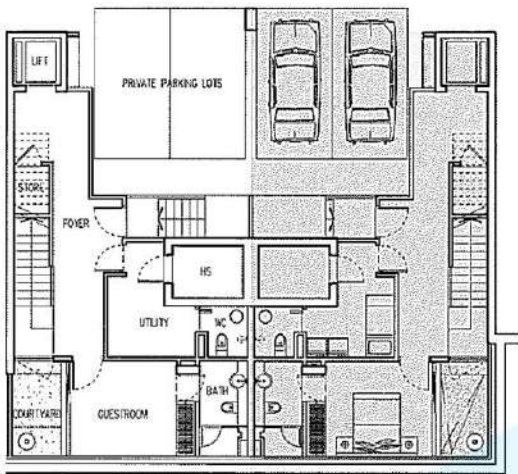
**DISCLAIMER:** These floor plans are draft plans only and may vary during construction of the unit. The loose items depicted on the floor plans (including without limitations the tables, chairs, lounge suites, side tables, entertainment units, beds and outdoor furniture) are included for illustration purposes only and will not be included in any contract that is subsequently entered into for the sale of the unit.

Any areas referred to on the plans depict the approximate strata areas only and are not meant to be accurate or precise and are subject to change and final survey. The strata areas are inclusive of carports, PES, planters, air-conditioning ledges, courtyards, decks, balconies and voids. The constructed unit may be greater or smaller than the areas identified on the draft plans.



House Number  
01-20; 424m<sup>2</sup> / 4,563ft<sup>2</sup>

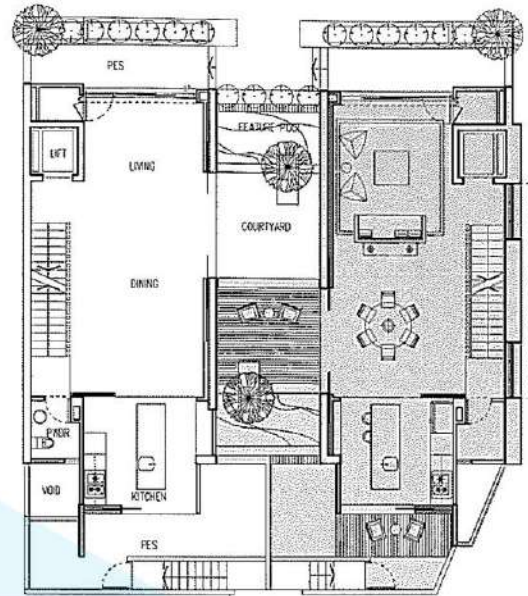
House Number  
01-19; 402m<sup>2</sup> / 4,327ft<sup>2</sup>



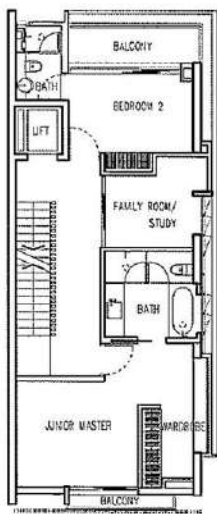
01-18

01-17

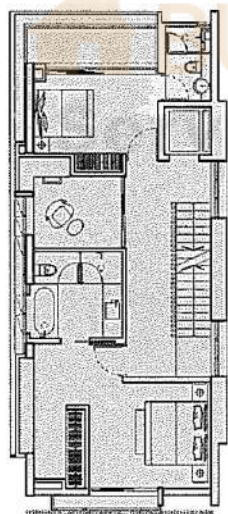
BASEMENT



LEVEL ONE



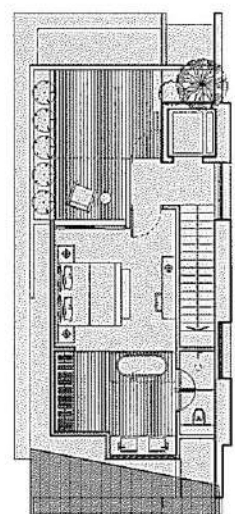
LEVEL TWO



BUY CONDO .sg  
Price You

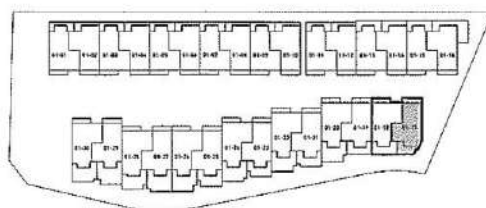


ATTIC



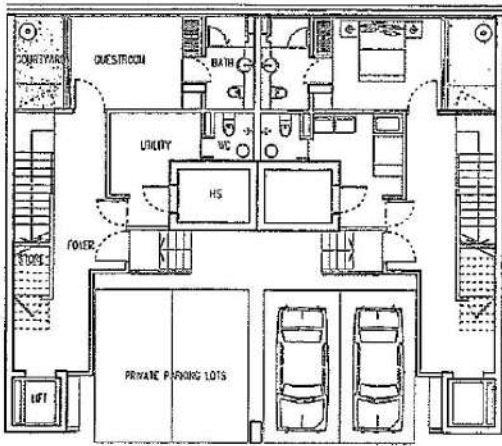
**DISCLAIMER:** These floor plans are draft plans only and may vary during construction of the unit. The loose items depicted on the floor plans including without limitations the tables, chairs, lounge suites, sofa tables, entertainment units, beds and outdoor furniture are included for illustration purposes only and will not be included in any contract that is subsequently entered into for the sale of the unit.

Any areas referred to on the plans depict the approximate strata areas only and are not meant to be accurate or precise and are subject to change and final survey. The strata areas are inclusive of carpets, PES, planters, air-conditioning ledges, courtyards, decks, balconies and voids. The constructed unit may be greater or smaller than the areas identified on the draft plans.



House Number  
01-18; 398m<sup>2</sup> / 4,284ft<sup>2</sup>

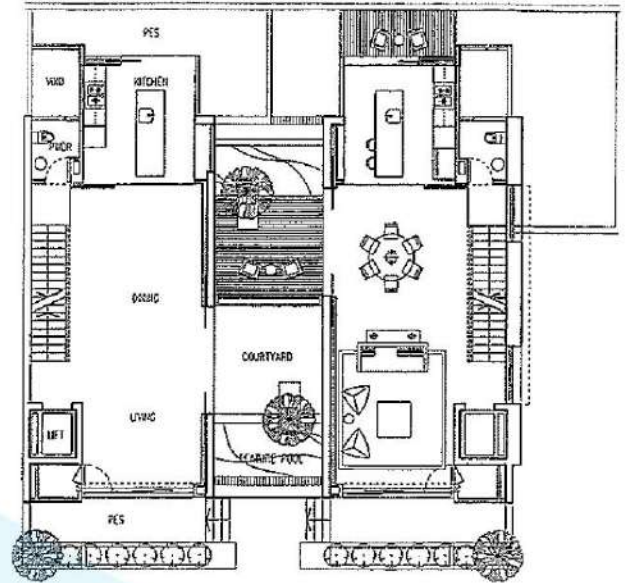
House Number  
01-17; 394m<sup>2</sup> / 4,240ft<sup>2</sup>



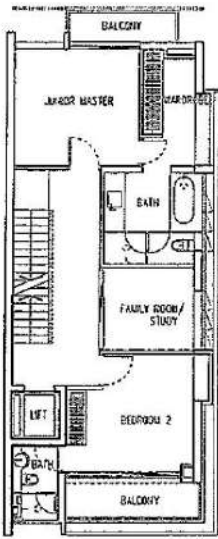
01-15

01-16

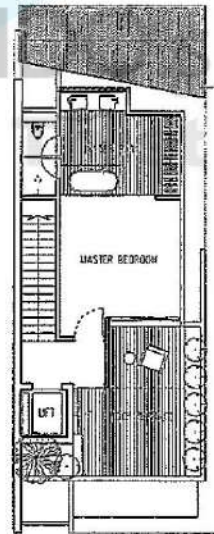
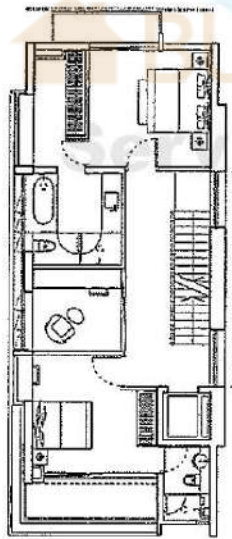
BASEMENT



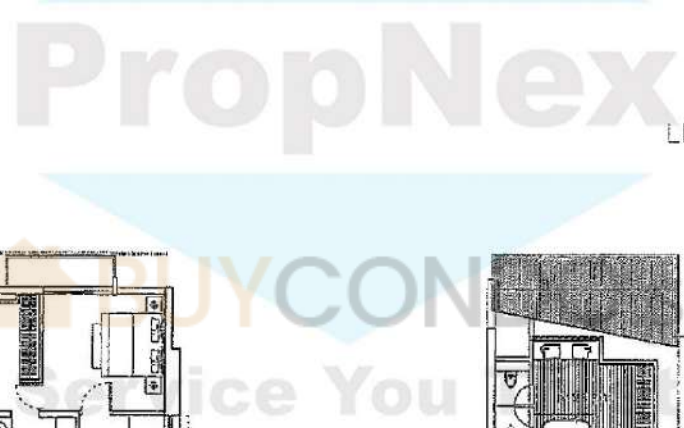
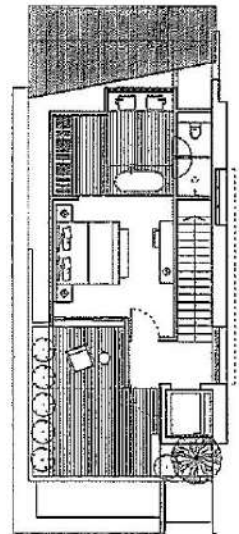
LEVEL ONE



LEVEL TWO

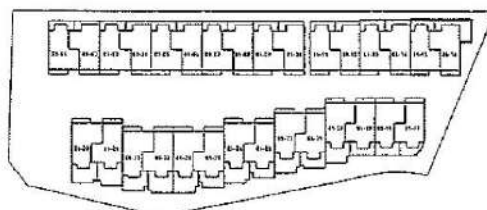


ATTIC



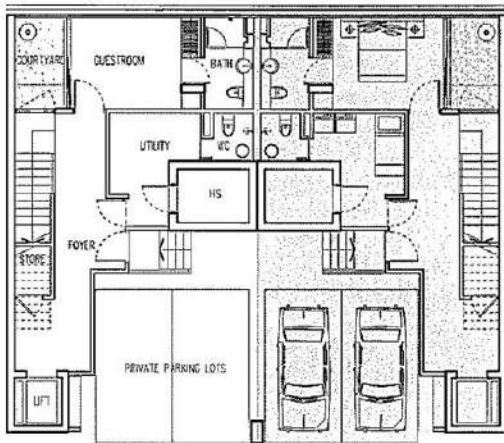
**DISCLAIMER:** These floor plans are draft plans only and may vary during construction of the unit. The loose items depicted on the floor plans (including without limitations the tables, chairs, lounge suites, side tables, entertainment units, beds and outdoor furniture) are included for illustration purposes only and will not be included in any contract that is subsequently entered into for the sale of the unit.

Any areas referred to on the plans depict the approximate strata areas only and are not meant to be accurate or precise and are subject to change and final survey. The strata areas are inclusive of carports, PES, planters, air-conditioning ledges, courtyards, decks, balconies and voids. The constructed unit may be greater or smaller than the areas identified on the draft plans.

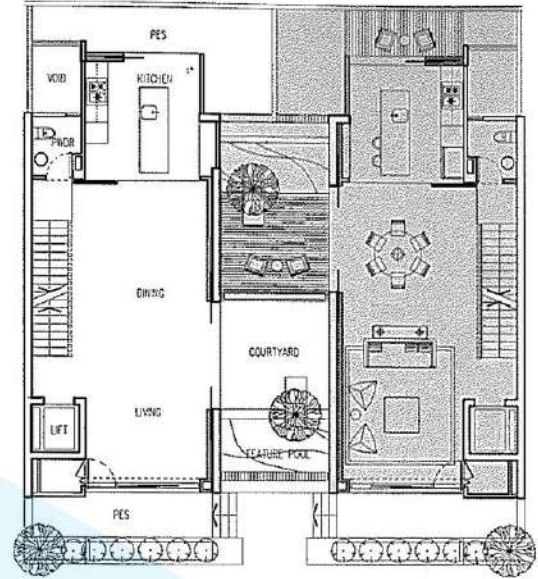


House Number  
01-15; 392m<sup>2</sup> / 4,219ft<sup>2</sup>

House Number  
01-16; 416m<sup>2</sup> / 4,477ft<sup>2</sup>



01-13

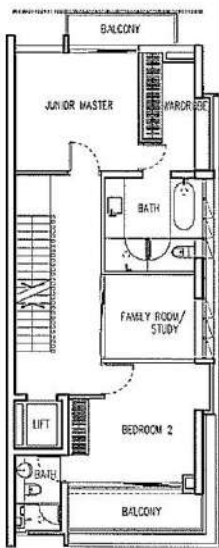


01-14

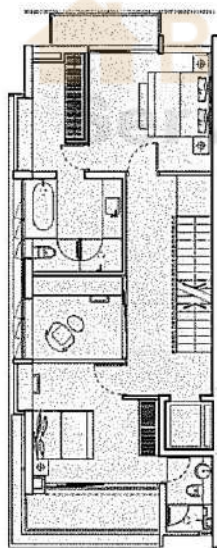
PropNex

BASEMENT

LEVEL ONE



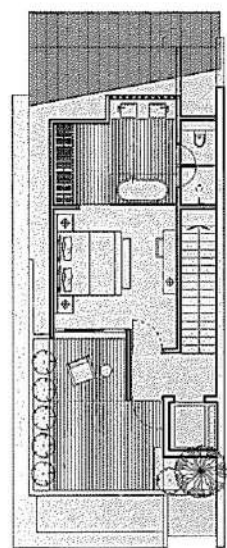
LEVEL TWO



BUYCOM  
Price You

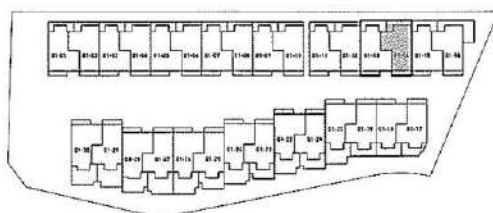


ATTIC



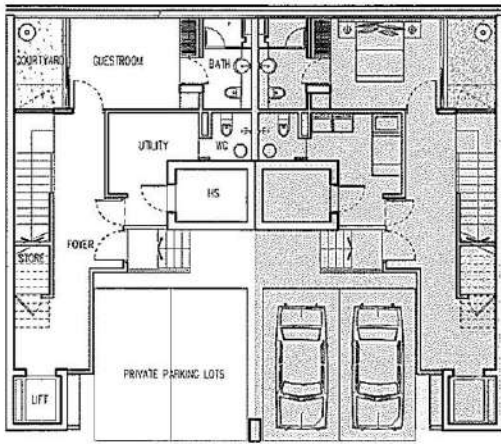
**DISCLAIMER:** These floor plans are draft plans only and may vary during construction of the unit. The loose items depicted on the floor plans (including without limitations the tables, chairs, lounge suites, side tables, entertainment units, beds and outdoor furniture) are included for illustration purposes only and will not be included in any contract that is subsequently entered into for the sale of the unit.

Any areas referred to on the plans depict the approximate strata areas only and are not meant to be accurate or precise and are subject to change and final survey. The strata areas are inclusive of carports, PES, planters, air-conditioning ledges, courtyards, decks, balconies and voids. The constructed unit may be greater or smaller than the areas identified on the draft plans.



House Number  
01-13; 392m<sup>2</sup> / 4,219ft<sup>2</sup>

House Number  
01-14; 392m<sup>2</sup> / 4,219ft<sup>2</sup>



01-01

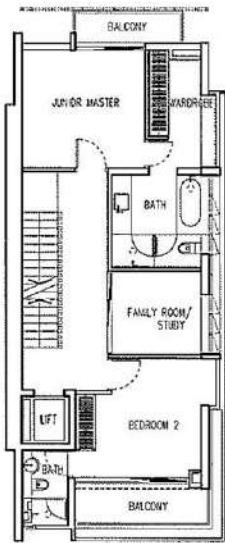


01-02

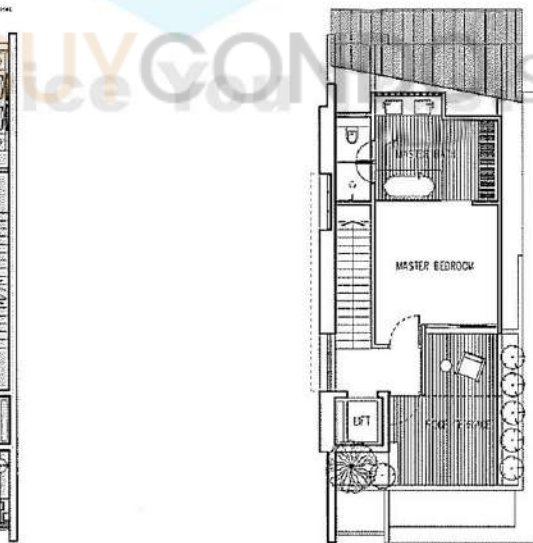
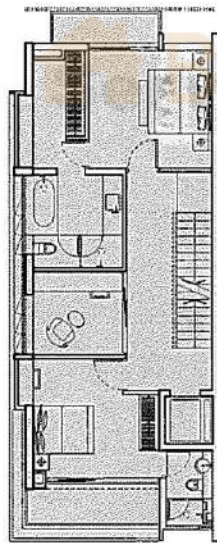
PropNex

BASEMENT

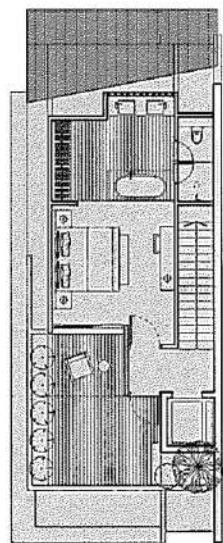
LEVEL ONE



LEVEL TWO

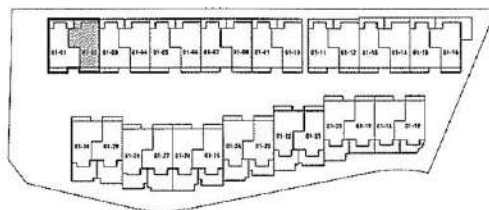


ATTIC



**DISCLAIMER:** These floor plans are draft plans only and may vary during construction of the unit. The loose items depicted on the floor plans (including without limitation the tables, chairs, lounge suites, side tables, entertainment units, beds and outdoor furniture) are included for illustration purposes only and will not be included in any contract that is subsequently entered into for the sale of the unit.

Any areas referred to on the plans depict the approximate strata areas only and are not meant to be accurate or precise and are subject to change and final survey. The strata areas are inclusive of carparks, PES, planters, air-conditioning ledges, courtyards, decks, balconies and voids. The constructed unit may be greater or smaller than the areas identified on the draft plans.



House Number  
01-01; 389m<sup>2</sup> / 4,187ft<sup>2</sup>

House Number  
01-02; 388m<sup>2</sup> / 4,176ft<sup>2</sup>