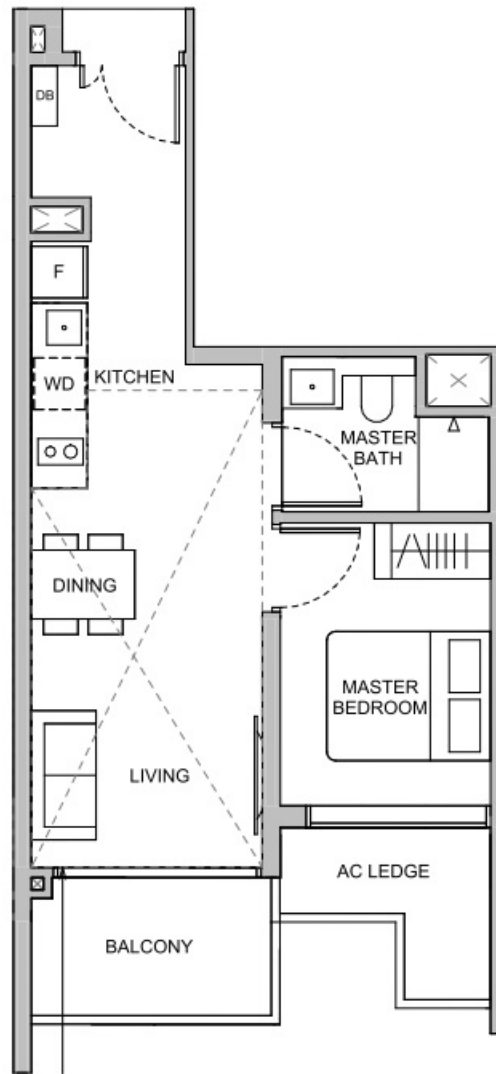


# 1-Bedroom

## TYPE A1 48 sqm / 517 sqft

**BLK 26**  
#02-11 to #12-11  
#15-11 to #22-11



Dotted line denotes Strata Void area for Type A1(L)

## TYPE A1(L) 64 sqm / 689 sqft

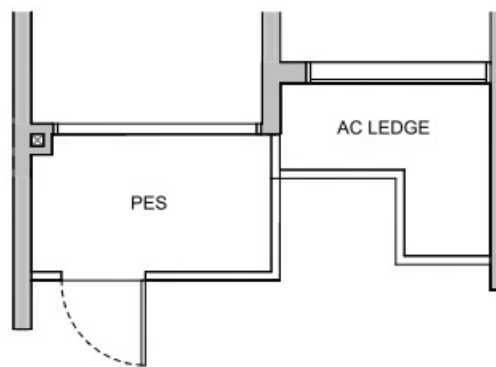
Area is inclusive of Strata Void above living and dining as per dotted line

**BLK 26**  
#13-11  
#23-11



## TYPE A1(G) 48 sqm / 517 sqft

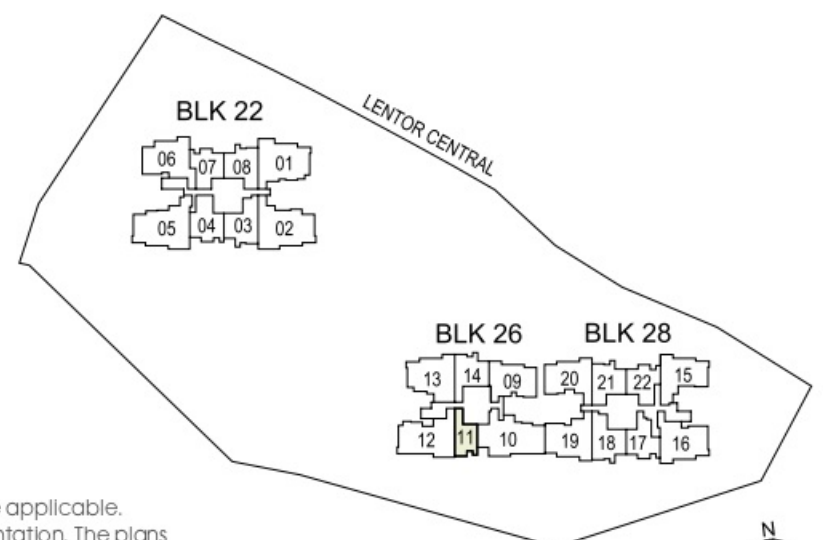
**BLK 26**  
#01-11



Building Plan Reference No: A1986-00001-2022-BP01  
Building Plan Approval Date: 29 September 2023

DB DISTRIBUTION BOARD      WD WASHER CUM DRYER      W&D WASHER AND DRYER  
F FRIDGE                      WC WATER CLOSET

Area includes air-conditioner (AC) ledge, balcony, private enclosed space (PES) and strata void where applicable. Some units are mirror images of the floor plans shown in the brochure. Please refer to the key plan for orientation. The plans are subject to change as may be required or approved by the relevant authorities and do not form part of any offer or contract. Areas are estimates only and are subject to final survey. The balcony and PES shall not be enclosed unless with the approved balcony screen. For an illustration of the approved balcony screen, please refer to Annexure A of this brochure.



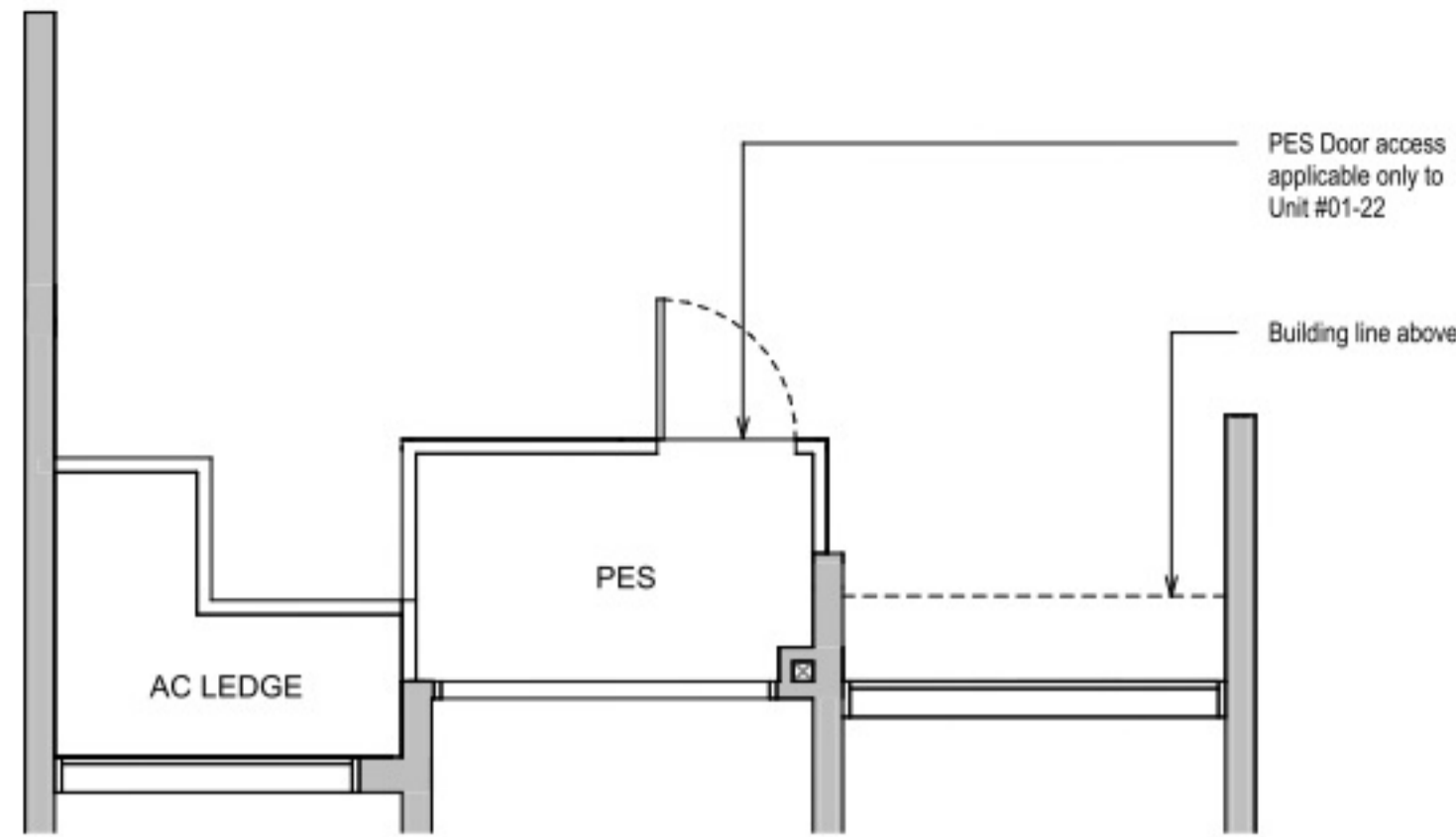
KEY PLAN NOT TO SCALE

# 2-Bedroom Classic

## TYPE B1C(G) 58 sqm / 624 sqft

**BLK 22**  
#01-07

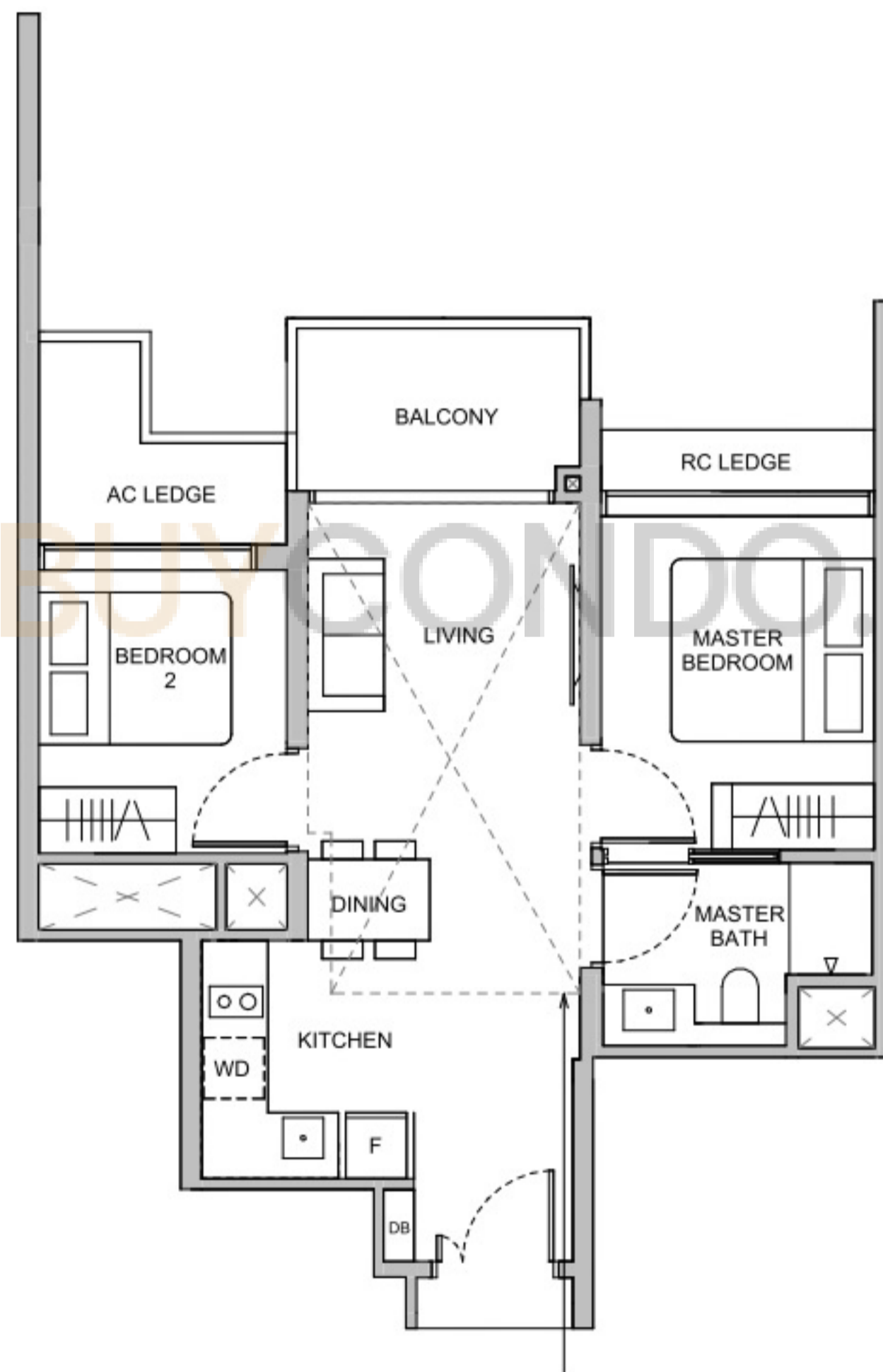
**BLK 28**  
#01-22\*



## TYPE B1C 58 sqm / 624 sqft

**BLK 22**  
#02-07 to #12-07  
#15-07 to #22-07

**BLK 28**  
#02-22\* to #12-22\*  
#15-22\* to #22-22\*



Dotted line denotes Strata Void area for Type B1C(L)

## TYPE B1C(L) 72 sqm / 775 sqft

Area is inclusive of Strata Void above living and dining as per dotted line

**BLK 22**  
#13-07  
#23-07

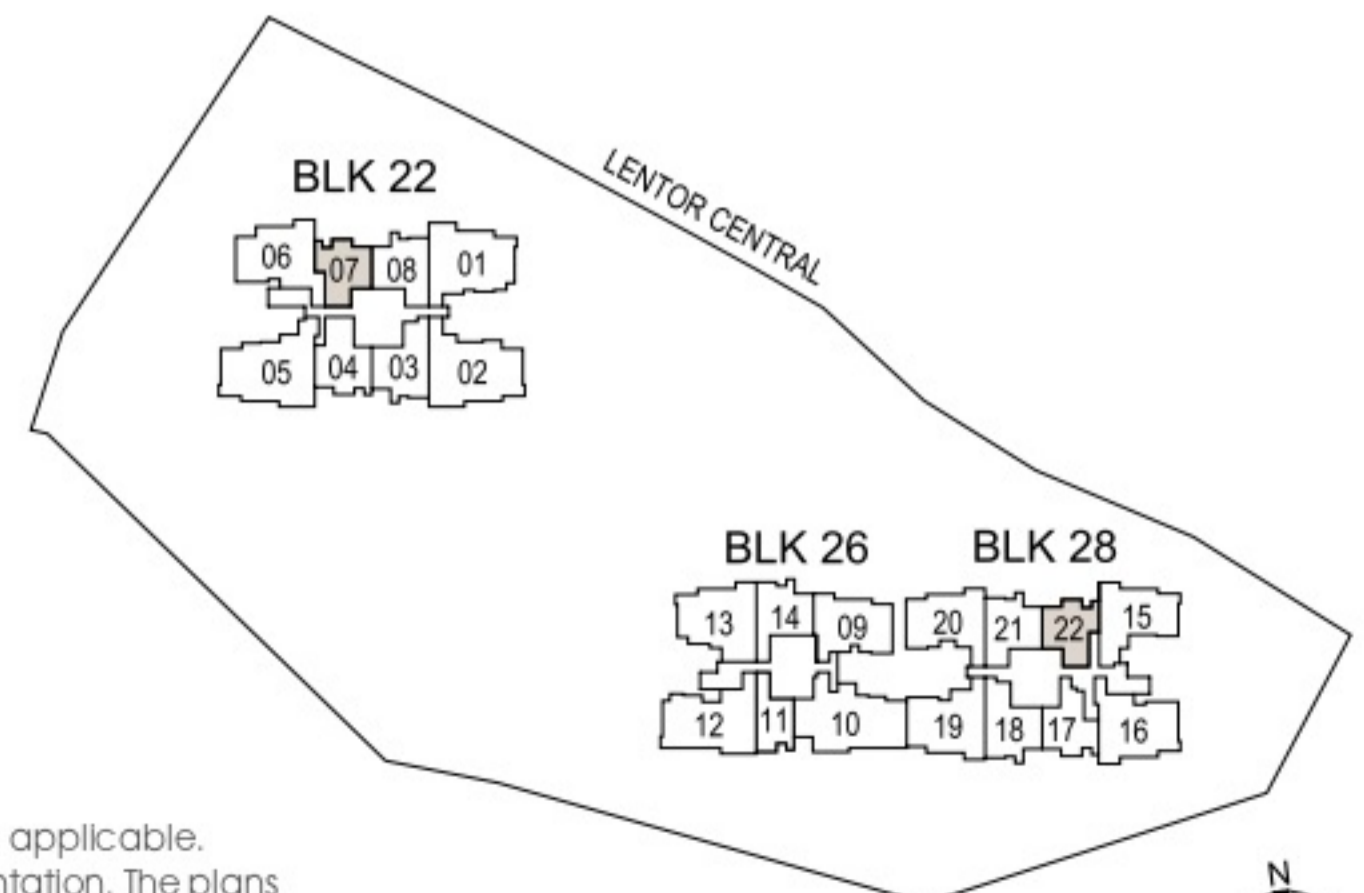
**BLK 28**  
#13-22\*  
#23-22\*



Building Plan Reference No: A1986-00001-2022-BP01  
Building Plan Approval Date: 29 September 2023

\*MIRROR UNITS

DB DISTRIBUTION BOARD      WD WASHER CUM DRYER      W&D WASHER AND DRYER  
F FRIDGE                      WC WATER CLOSET



Area includes air-conditioner (AC) ledge, balcony, private enclosed space (PES) and strata void where applicable. Some units are mirror images of the floor plans shown in the brochure. Please refer to the key plan for orientation. The plans are subject to change as may be required or approved by the relevant authorities and do not form part of any offer or contract. Areas are estimates only and are subject to final survey. The balcony and PES shall not be enclosed unless with the approved balcony screen. For an illustration of the approved balcony screen, please refer to Annexure A of this brochure.

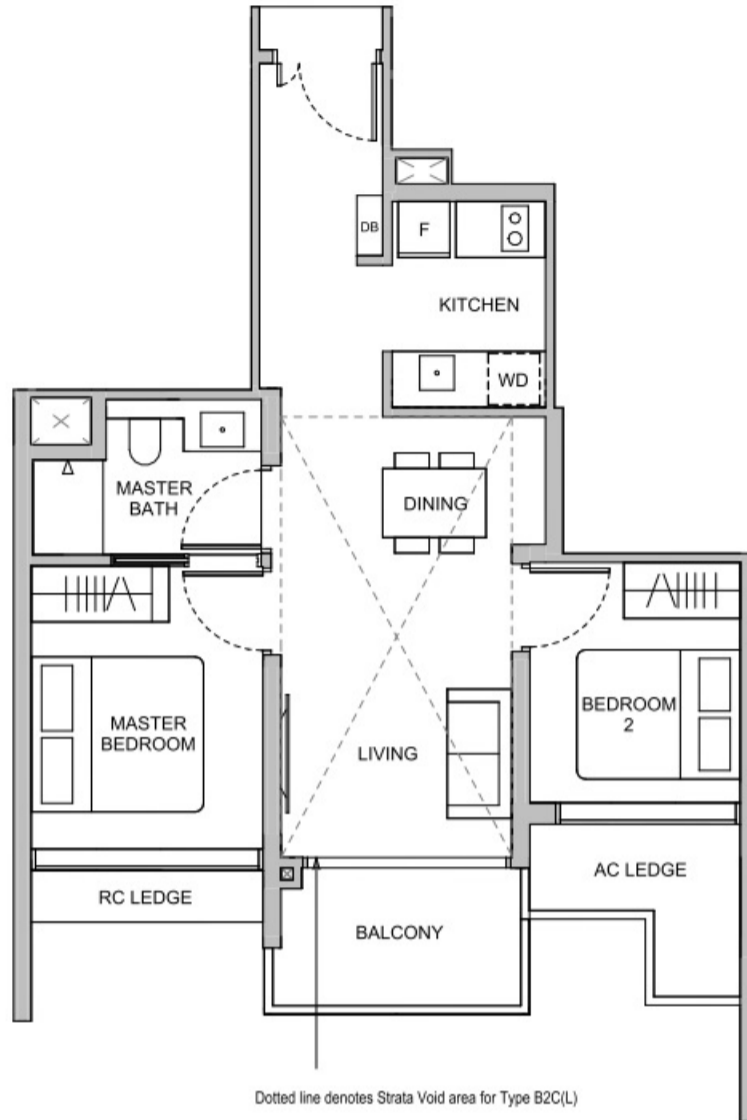


KEY PLAN NOT TO SCALE

# 2-Bedroom Classic

**TYPE B2C**  
61 sqm / 657 sqft

**BLK 28**  
#02-17 to #12-17  
#15-17 to #22-17



Dotted line denotes Strata Void area for Type B2C(L)

**TYPE B2C(L)**  
76 sqm / 818 sqft

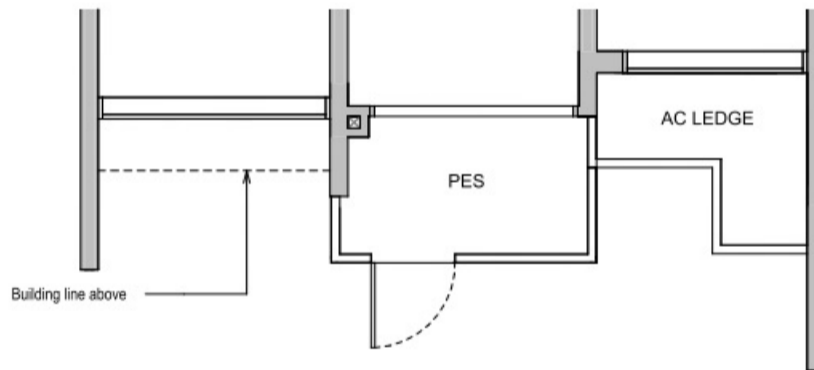
Area is inclusive of Strata Void above living and dining as per dotted line

**BLK 28**  
#13-17  
#23-17



**TYPE B2C(G)**  
61 sqm / 657 sqft

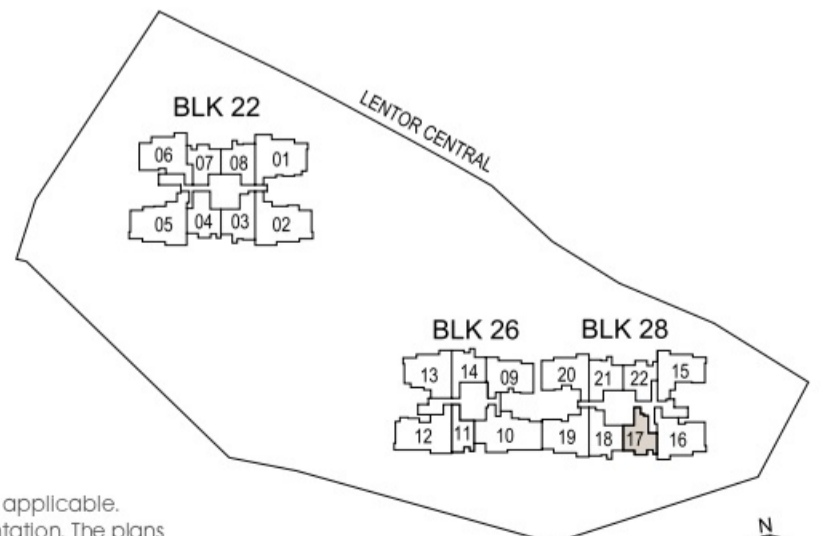
**BLK 28**  
#01-17



Building Plan Reference No: A1986-00001-2022-BP01  
Building Plan Approval Date: 29 September 2023

- DB DISTRIBUTION BOARD      WD WASHER CUM DRYER      W&D WASHER AND DRYER
- F FRIDGE                      WC WATER CLOSET

Area Includes air-conditioner (AC) ledge, balcony, private enclosed space (PES) and strata void where applicable. Some units are mirror images of the floor plans shown in the brochure. Please refer to the key plan for orientation. The plans are subject to change as may be required or approved by the relevant authorities and do not form part of any offer or contract. Areas are estimates only and are subject to final survey. The balcony and PES shall not be enclosed unless with the approved balcony screen. For an illustration of the approved balcony screen, please refer to Annexure A of this brochure.



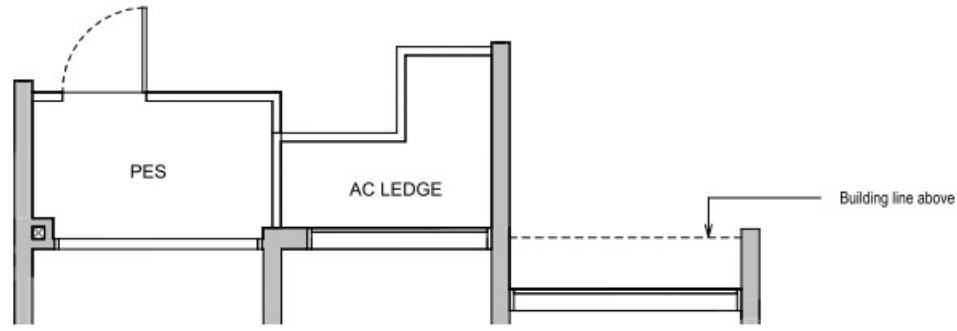
KEY PLAN NOT TO SCALE



# 2-Bedroom

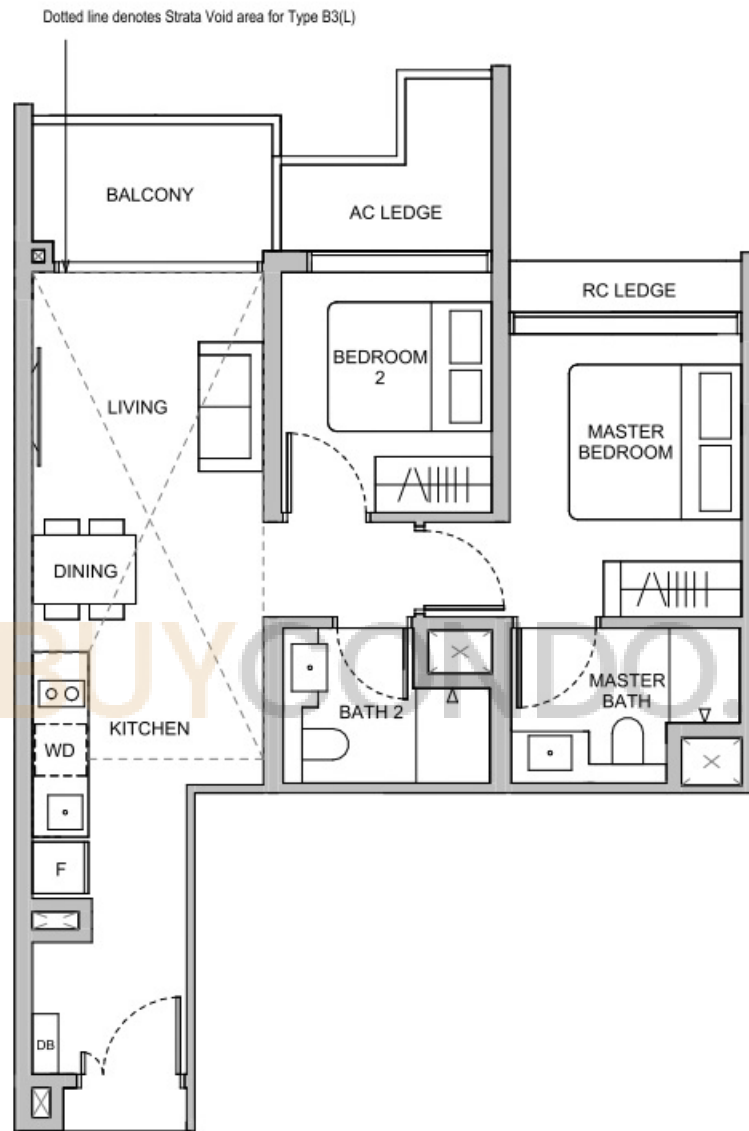
## TYPE B3(G) 66 sqm / 710 sqft

**BLK 26**  
#01-14



## TYPE B3 66 sqm / 710 sqft

**BLK 26**  
#02-14 to #12-14  
#15-14 to #22-14



## TYPE B3(L) 82 sqm / 883 sqft

Area is inclusive of Strata Void above living and dining as per dotted line

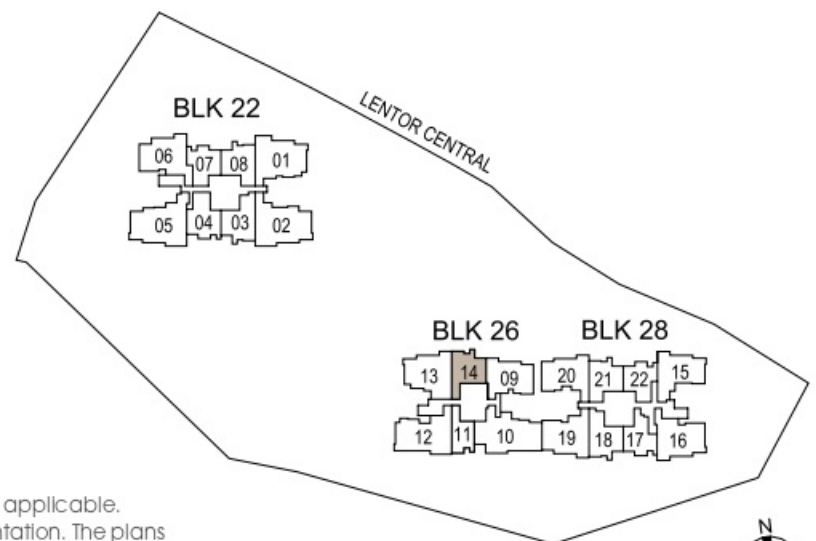
**BLK 26**  
#13-14  
#23-14



Building Plan Reference No: A1986-00001-2022-BP01  
Building Plan Approval Date: 29 September 2023

- DB DISTRIBUTION BOARD      WD WASHER CUM DRYER      W&D WASHER AND DRYER
- F FRIDGE                      WC WATER CLOSET

Area includes air-conditioner (AC) ledge, balcony, private enclosed space (PES) and strata void where applicable. Some units are mirror images of the floor plans shown in the brochure. Please refer to the key plan for orientation. The plans are subject to change as may be required or approved by the relevant authorities and do not form part of any offer or contract. Areas are estimates only and are subject to final survey. The balcony and PES shall not be enclosed unless with the approved balcony screen. For an illustration of the approved balcony screen, please refer to Annexure A of this brochure.

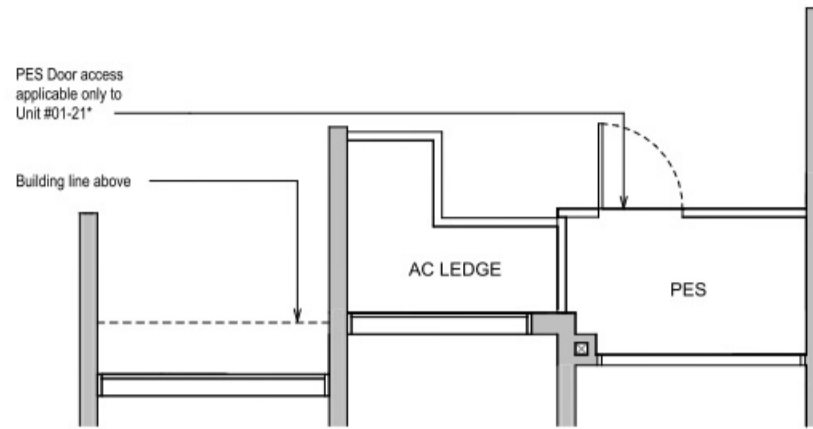


KEY PLAN NOT TO SCALE

## TYPE B4(G) 66 sqm / 710 sqft

**BLK 22**  
#01-08

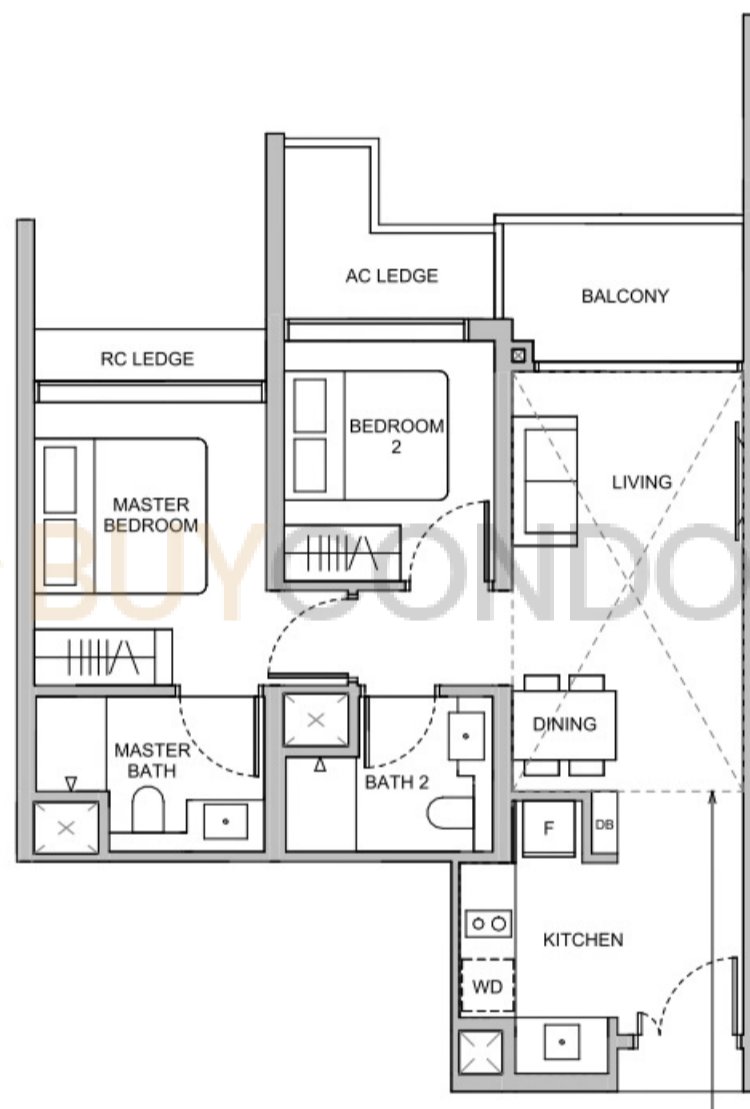
**BLK 28**  
#01-21\*



## TYPE B4 66 sqm / 710 sqft

**BLK 22**  
#02-08 to #12-08  
#15-08 to #22-08

**BLK 28**  
#02-21\* to #12-21\*  
#15-21\* to #22-21\*



Dotted line denotes Strata Void area for Type B4(L)

## TYPE B4(L) 81 sqm / 872 sqft

Area is inclusive of Strata Void above living and dining as per dotted line

**BLK 22**  
#13-08  
#23-08

**BLK 28**  
#13-21\*  
#23-21\*



Building Plan Reference No: A1986-00001-2022-BP01

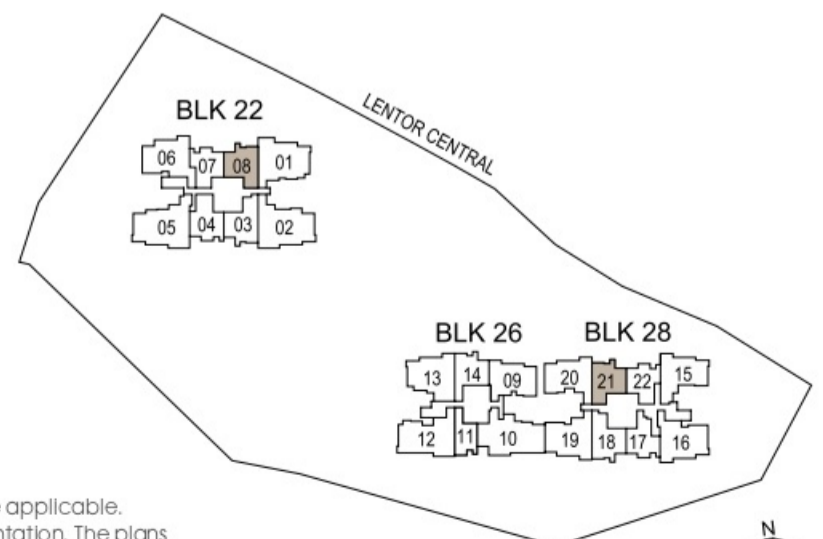
Building Plan Approval Date: 29 September 2023

\*MIRROR UNITS

DB DISTRIBUTION BOARD  
F FRIDGE

WD WASHER CUM DRYER  
WC WATER CLOSET

W&D WASHER AND DRYER



Area Includes air-conditioner (AC) ledge, balcony, private enclosed space (PES) and strata void where applicable. Some units are mirror images of the floor plans shown in the brochure. Please refer to the key plan for orientation. The plans are subject to change as may be required or approved by the relevant authorities and do not form part of any offer or contract. Areas are estimates only and are subject to final survey. The balcony and PES shall not be enclosed unless with the approved balcony screen. For an illustration of the approved balcony screen, please refer to Annexure A of this brochure.



KEY PLAN NOT TO SCALE

# 2-Bedroom + Study

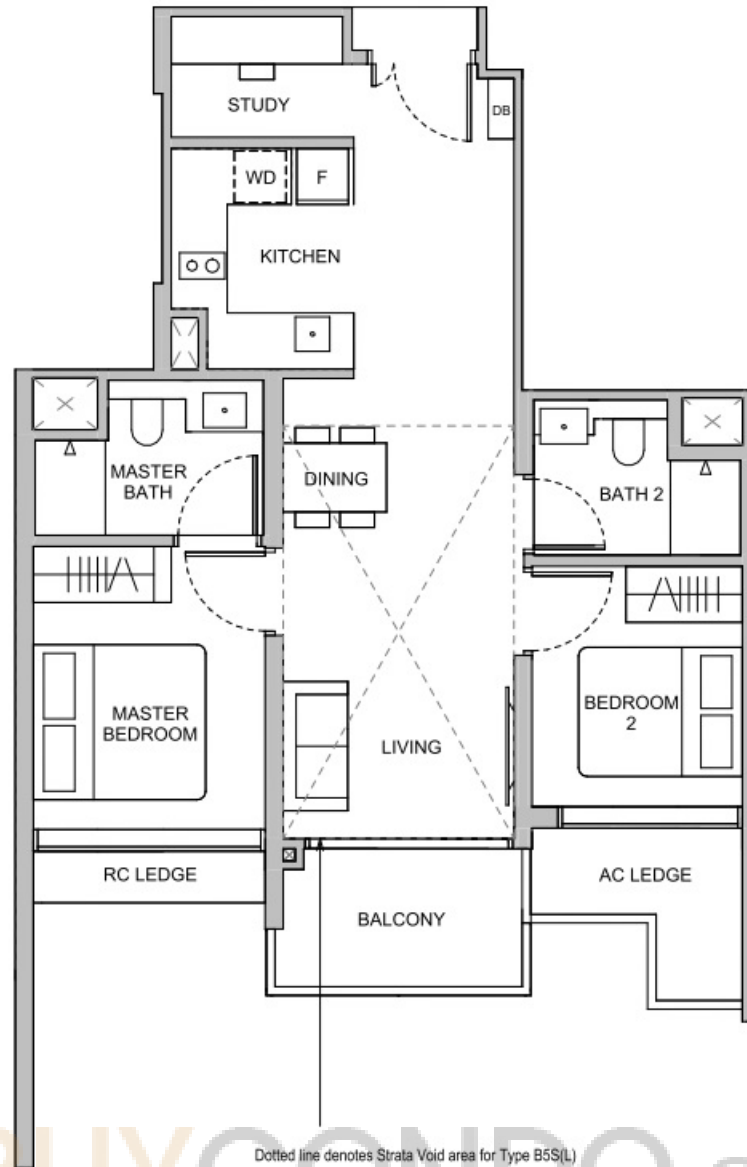
**TYPE B5S**  
70 sqm / 753 sqft

**BLK 22**  
#03-04 to #12-04  
#15-04 to #22-04

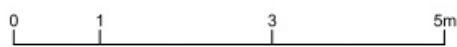
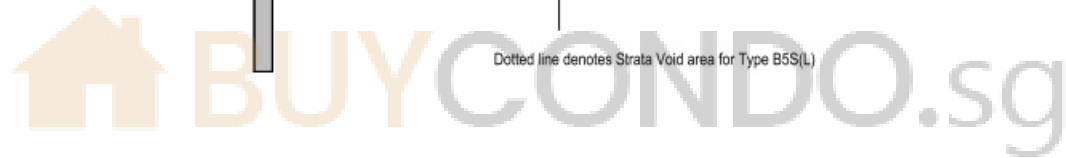
**TYPE B5S(L)**  
84 sqm / 904 sqft

Area is inclusive of Strata Void above living and dining as per dotted line

**BLK 22**  
#13-04  
#23-04



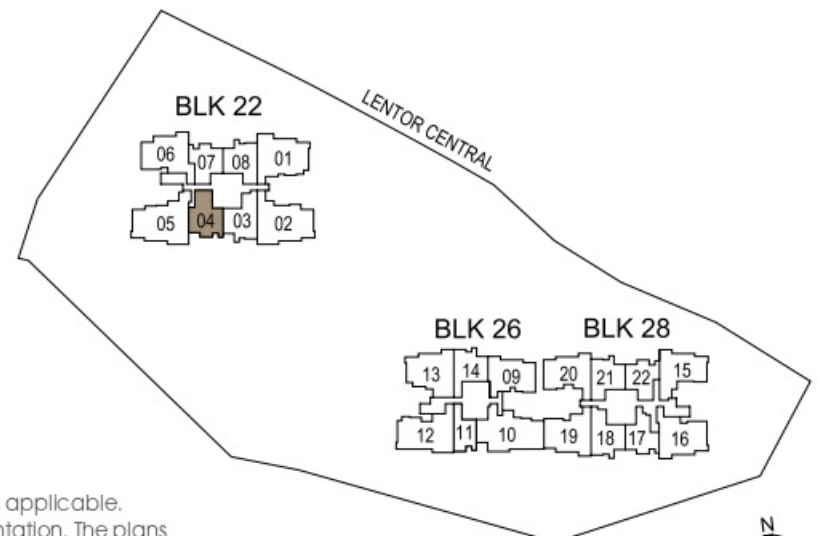
Dotted line denotes Strata Void area for Type B5S(L)



Building Plan Reference No: A1986-00001-2022-BP01  
Building Plan Approval Date: 29 September 2023

DB DISTRIBUTION BOARD      WD WASHER CUM DRYER      W&D WASHER AND DRYER  
F FRIDGE                      WC WATER CLOSET

Area includes air-conditioner (AC) ledge, balcony, private enclosed space (PES) and strata void where applicable. Some units are mirror images of the floor plans shown in the brochure. Please refer to the key plan for orientation. The plans are subject to change as may be required or approved by the relevant authorities and do not form part of any offer or contract. Areas are estimates only and are subject to final survey. The balcony and PES shall not be enclosed unless with the approved balcony screen. For an illustration of the approved balcony screen, please refer to Annexure A of this brochure.



KEY PLAN NOT TO SCALE

# 2-Bedroom + Study

**TYPE B6S**  
73 sqm / 786 sqft

**BLK 22**  
#03-03 to #12-03  
#15-03 to #22-03

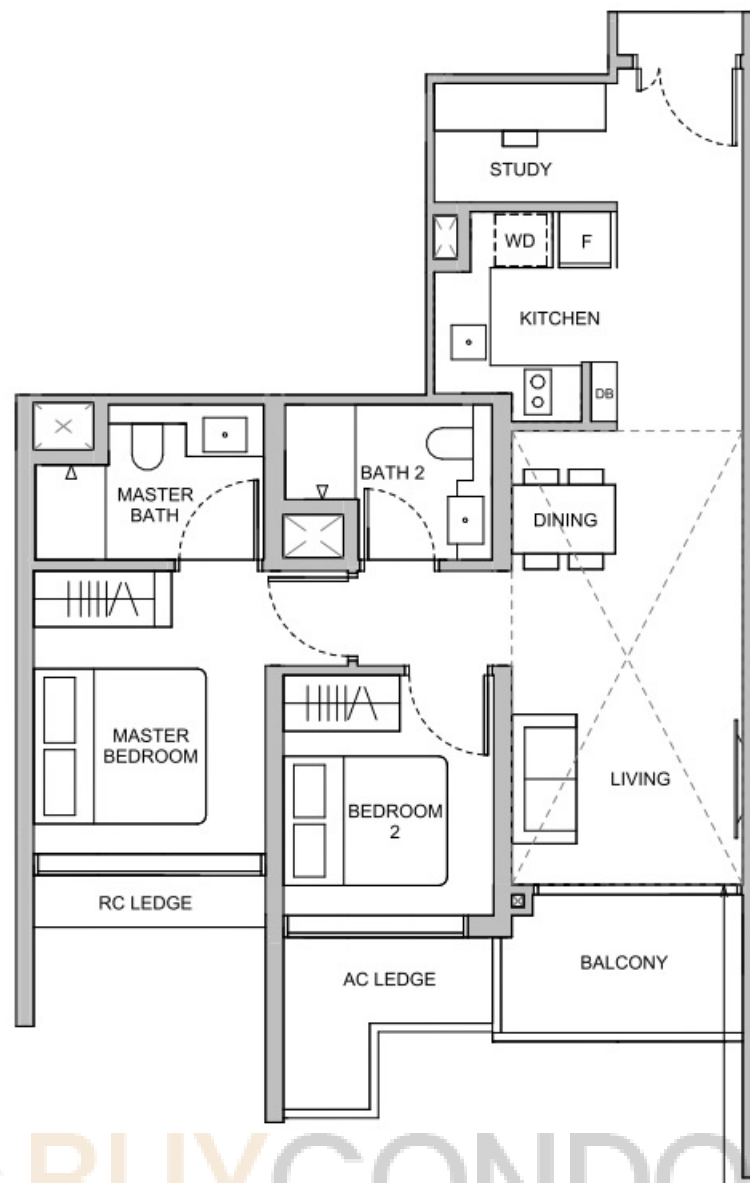
**BLK 28**  
#02-18\* to #12-18\*  
#15-18\* to #22-18\*

**TYPE B6S(L)**  
89 sqm / 958 sqft

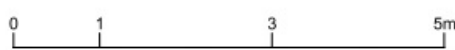
Area is inclusive of Strata Void above living and dining as per dotted line

**BLK 22**  
#13-03  
#23-03

**BLK 28**  
#13-18\*  
#23-18\*



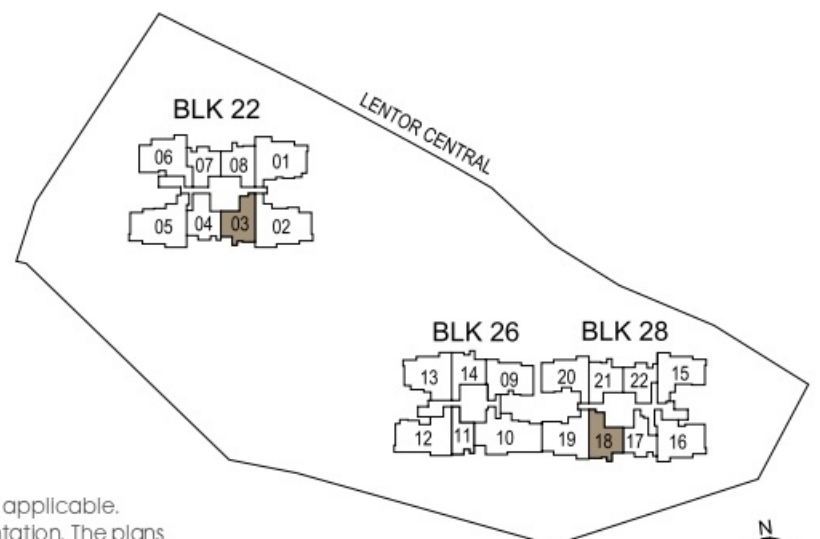
Dotted line denotes Strata Void area for Type B6S(L)



Building Plan Reference No: A1986-00001-2022-BP01  
Building Plan Approval Date: 29 September 2023  
\*MIRROR UNITS

DB DISTRIBUTION BOARD      WD WASHER CUM DRYER      W&D WASHER AND DRYER  
F FRIDGE                      WC WATER CLOSET

Area includes air-conditioner (AC) ledge, balcony, private enclosed space (PES) and strata void where applicable. Some units are mirror images of the floor plans shown in the brochure. Please refer to the key plan for orientation. The plans are subject to change as may be required or approved by the relevant authorities and do not form part of any offer or contract. Areas are estimates only and are subject to final survey. The balcony and PES shall not be enclosed unless with the approved balcony screen. For an illustration of the approved balcony screen, please refer to Annexure A of this brochure.



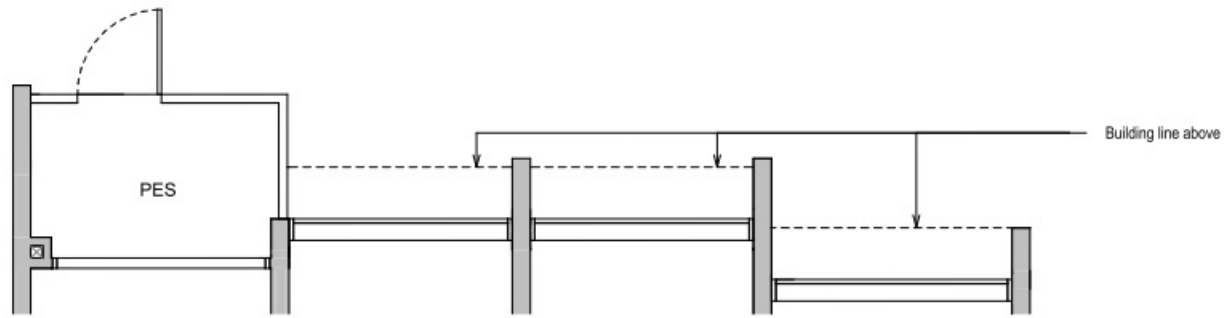
KEY PLAN NOT TO SCALE



# 3-Bedroom

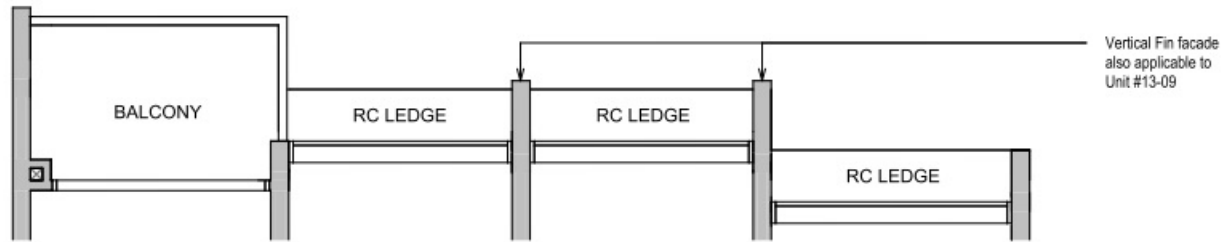
## TYPE C1(G) 84 sqm / 904 sqft

BLK 26  
#01-09



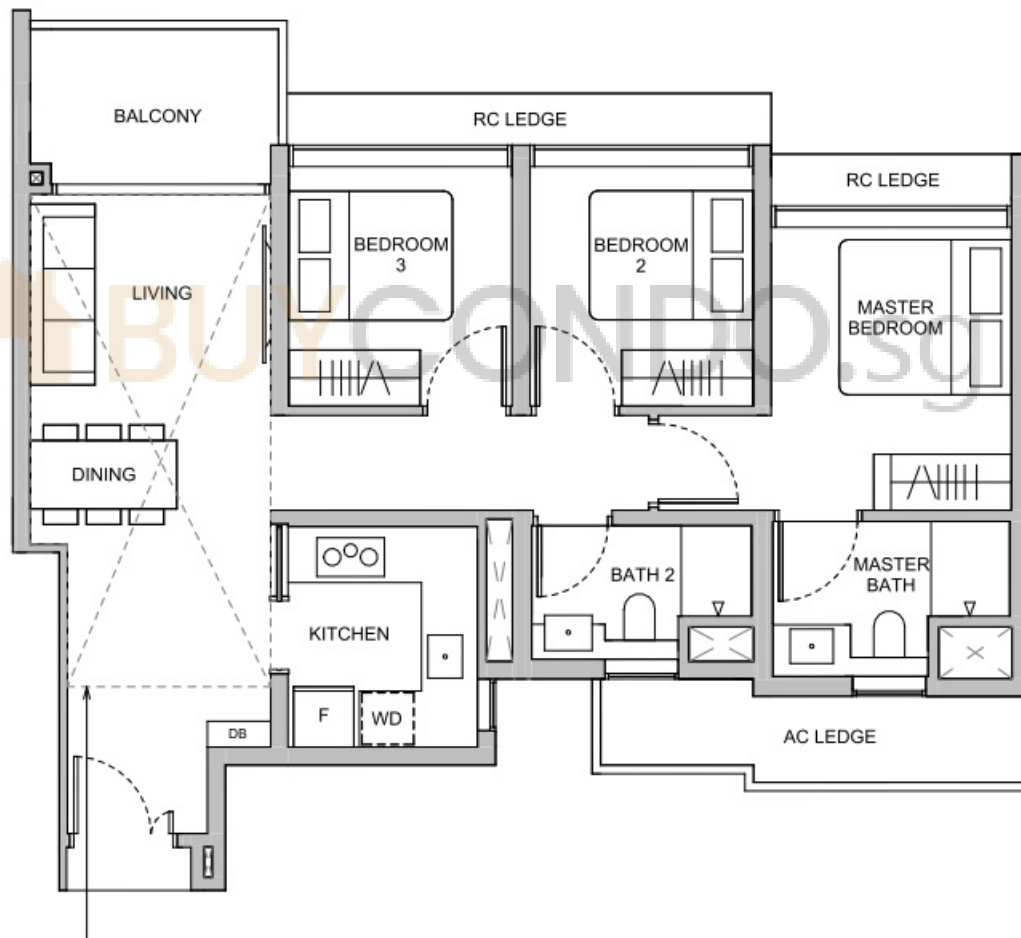
## TYPE C1 84 sqm / 904 sqft

BLK 26  
#02-09 to #12-09



## TYPE C1 84 sqm / 904 sqft

BLK 26  
#15-09 to #22-09



## TYPE C1(L) 101 sqm / 1087 sqft

Area is inclusive of Strata Void above living and dining as per dotted line

BLK 26  
#13-09  
#23-09

Dotted line denotes Strata Void area for Type C1(L)

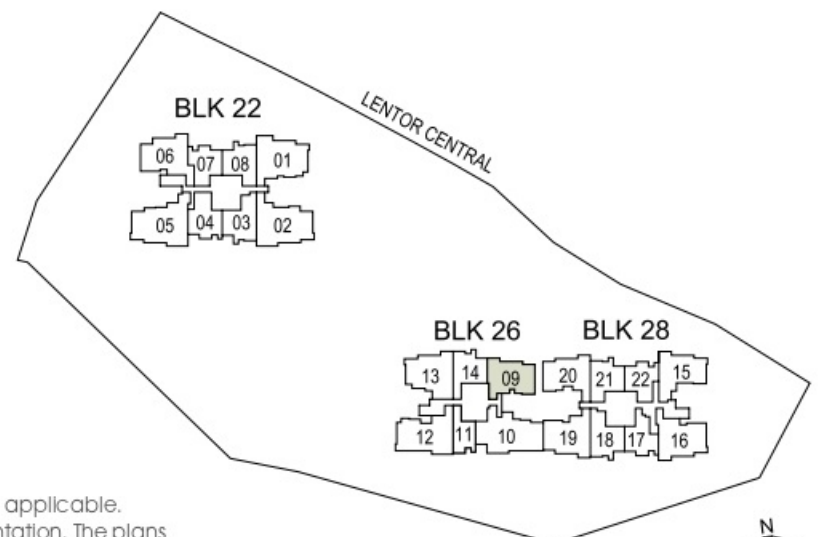
Main Entrance of Unit #01-09



Building Plan Reference No: A1986-00001-2022-BP01  
Building Plan Approval Date: 29 September 2023

DB DISTRIBUTION BOARD      WD WASHER CUM DRYER      W&D WASHER AND DRYER  
F FRIDGE                          WC WATER CLOSET

Area includes air-conditioner (AC) ledge, balcony, private enclosed space (PES) and strata void where applicable. Some units are mirror images of the floor plans shown in the brochure. Please refer to the key plan for orientation. The plans are subject to change as may be required or approved by the relevant authorities and do not form part of any offer or contract. Areas are estimates only and are subject to final survey. The balcony and PES shall not be enclosed unless with the approved balcony screen. For an illustration of the approved balcony screen, please refer to Annexure A of this brochure.



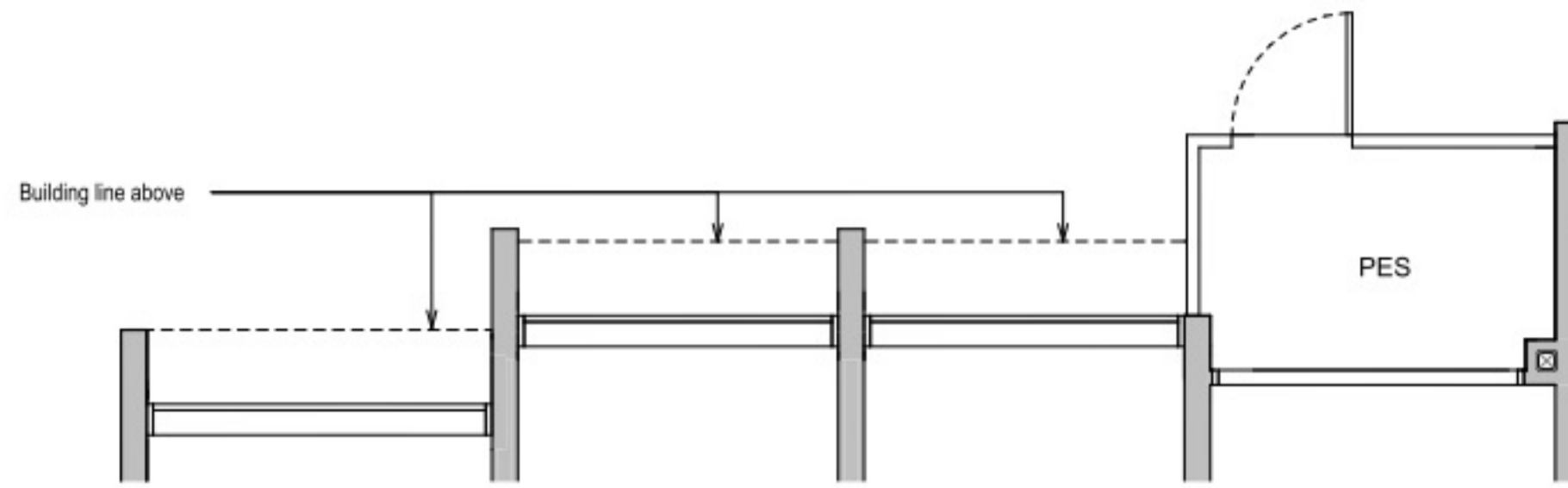
KEY PLAN NOT TO SCALE



# 3-Bedroom

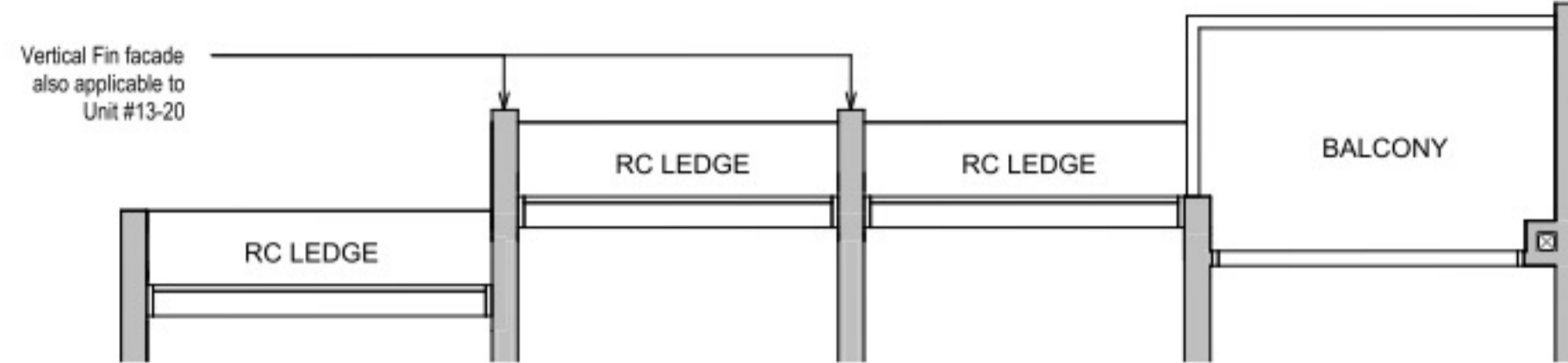
## TYPE C2(G) 87 sqm / 936 sqft

**BLK 28**  
#01-20



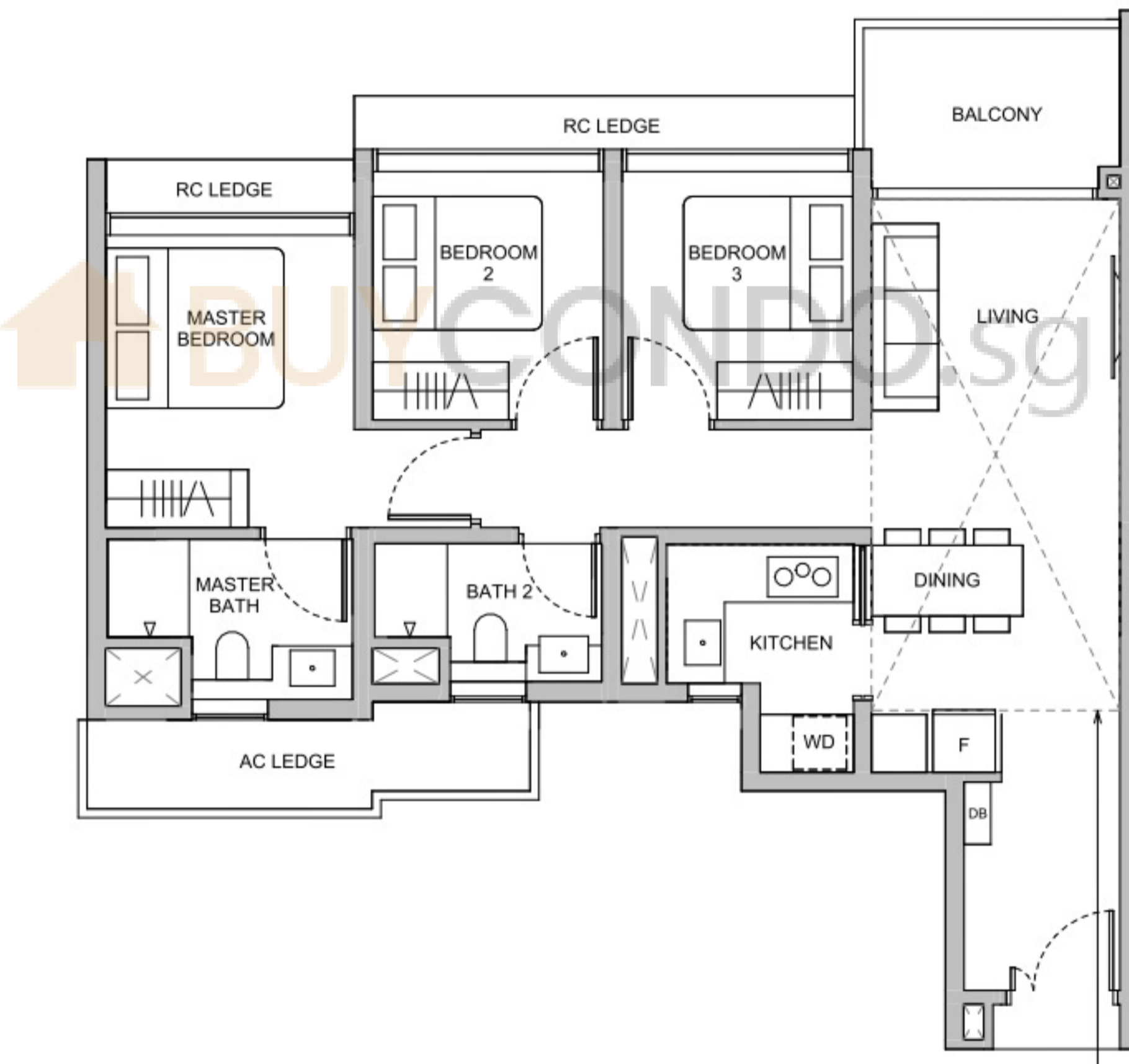
## TYPE C2 87 sqm / 936 sqft

**BLK 28**  
#02-20 to #12-20



## TYPE C2 87 sqm / 936 sqft

**BLK 28**  
#15-20 to #22-20



## TYPE C2(L) 105 sqm / 1130 sqft

Area is inclusive of Strata Void above living and dining as per dotted line

**BLK 28**  
#13-20  
#23-20

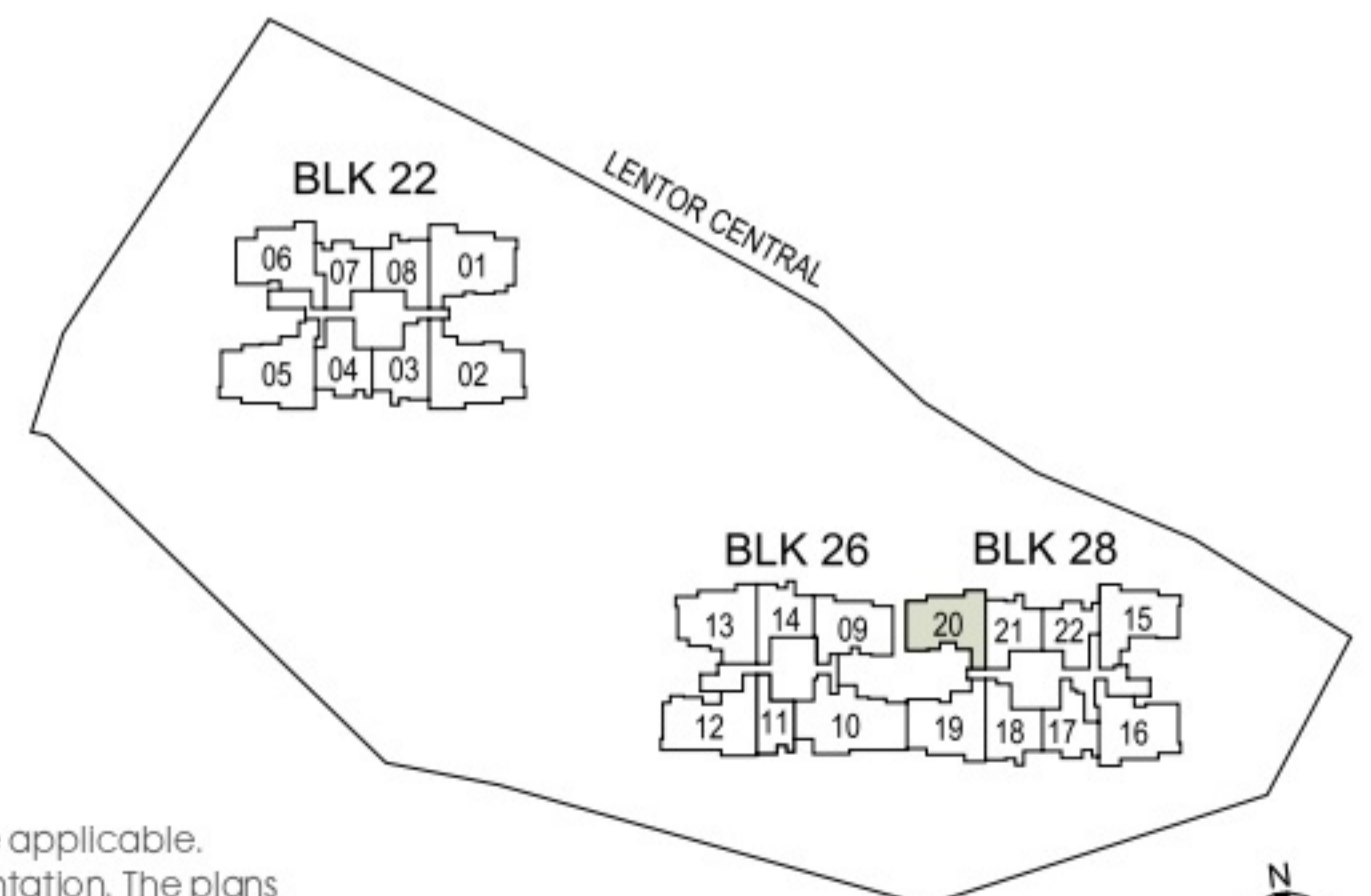
Dotted line denotes Strata Void area for Type C2(L)



Building Plan Reference No: A1986-00001-2022-BP01  
Building Plan Approval Date: 29 September 2023

- DB DISTRIBUTION BOARD      WD WASHER CUM DRYER      W&D WASHER AND DRYER
- F FRIDGE                      WC WATER CLOSET

Area includes air-conditioner (AC) ledge, balcony, private enclosed space (PES) and strata void where applicable. Some units are mirror images of the floor plans shown in the brochure. Please refer to the key plan for orientation. The plans are subject to change as may be required or approved by the relevant authorities and do not form part of any offer or contract. Areas are estimates only and are subject to final survey. The balcony and PES shall not be enclosed unless with the approved balcony screen. For an illustration of the approved balcony screen, please refer to Annexure A of this brochure.

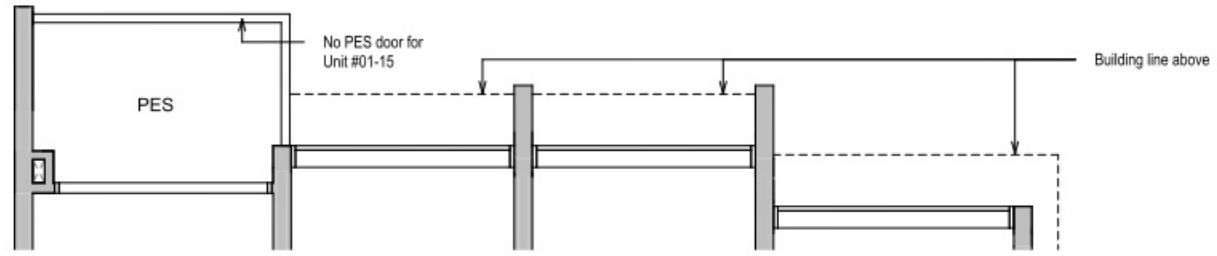


KEY PLAN NOT TO SCALE

# 3-Bedroom

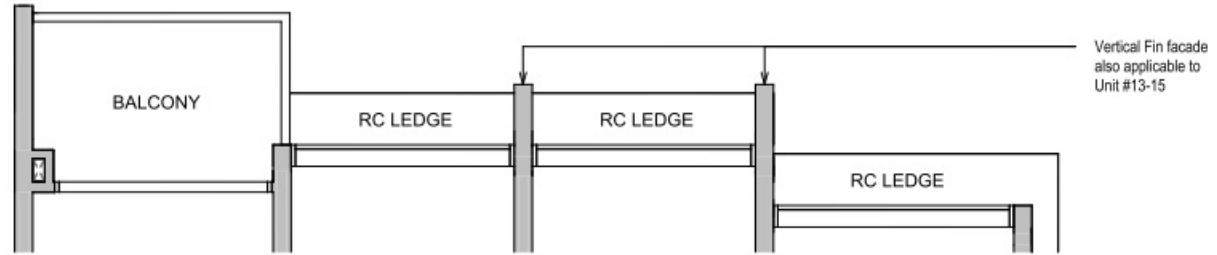
## TYPE C3(G) 88 sqm / 947 sqft

BLK 28  
#01-15



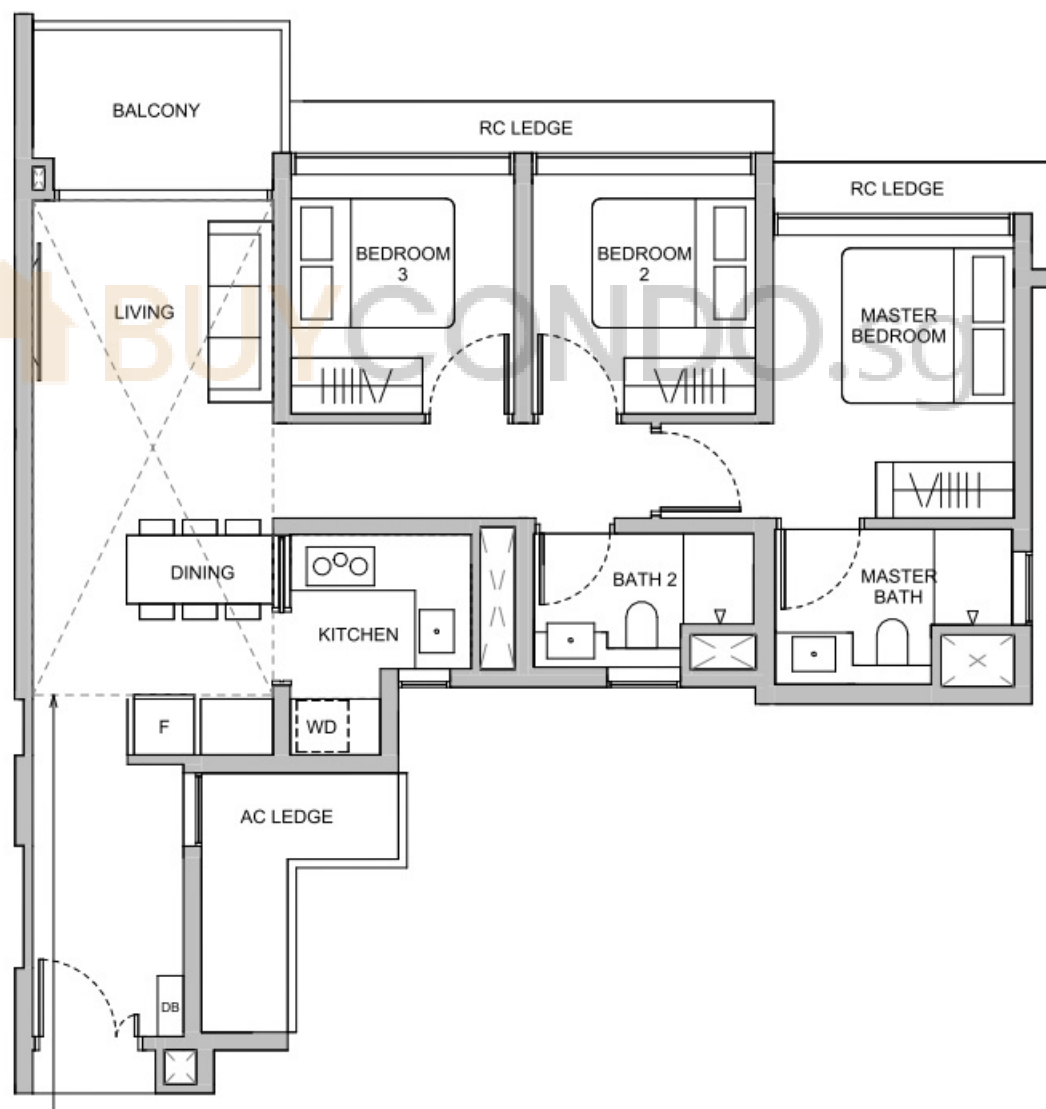
## TYPE C3 88 sqm / 947 sqft

BLK 28  
#02-15 to #12-15



## TYPE C3 88 sqm / 947 sqft

BLK 28  
#15-15 to #22-15



Dotted line denotes Strata Void area for Type C3(L)

## TYPE C3(L) 106 sqm / 1141 sqft

Area is inclusive of Strata Void above living and dining as per dotted line

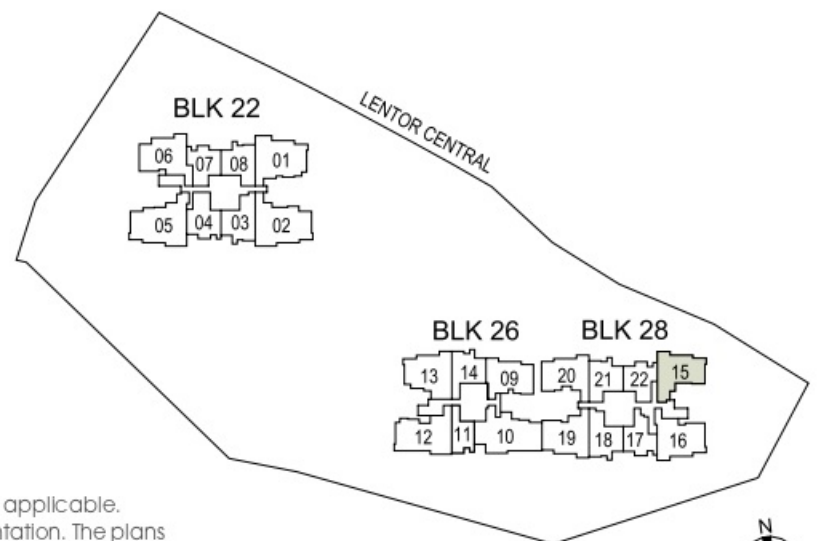
BLK 28  
#13-15  
#23-15



Building Plan Reference No: A1986-00001-2022-BP01  
Building Plan Approval Date: 29 September 2023

DB DISTRIBUTION BOARD      WD WASHER CUM DRYER      W&D WASHER AND DRYER  
F FRIDGE                      WC WATER CLOSET

Area includes air-conditioner (AC) ledge, balcony, private enclosed space (PES) and strata void where applicable. Some units are mirror images of the floor plans shown in the brochure. Please refer to the key plan for orientation. The plans are subject to change as may be required or approved by the relevant authorities and do not form part of any offer or contract. Areas are estimates only and are subject to final survey. The balcony and PES shall not be enclosed unless with the approved balcony screen. For an illustration of the approved balcony screen, please refer to Annexure A of this brochure.

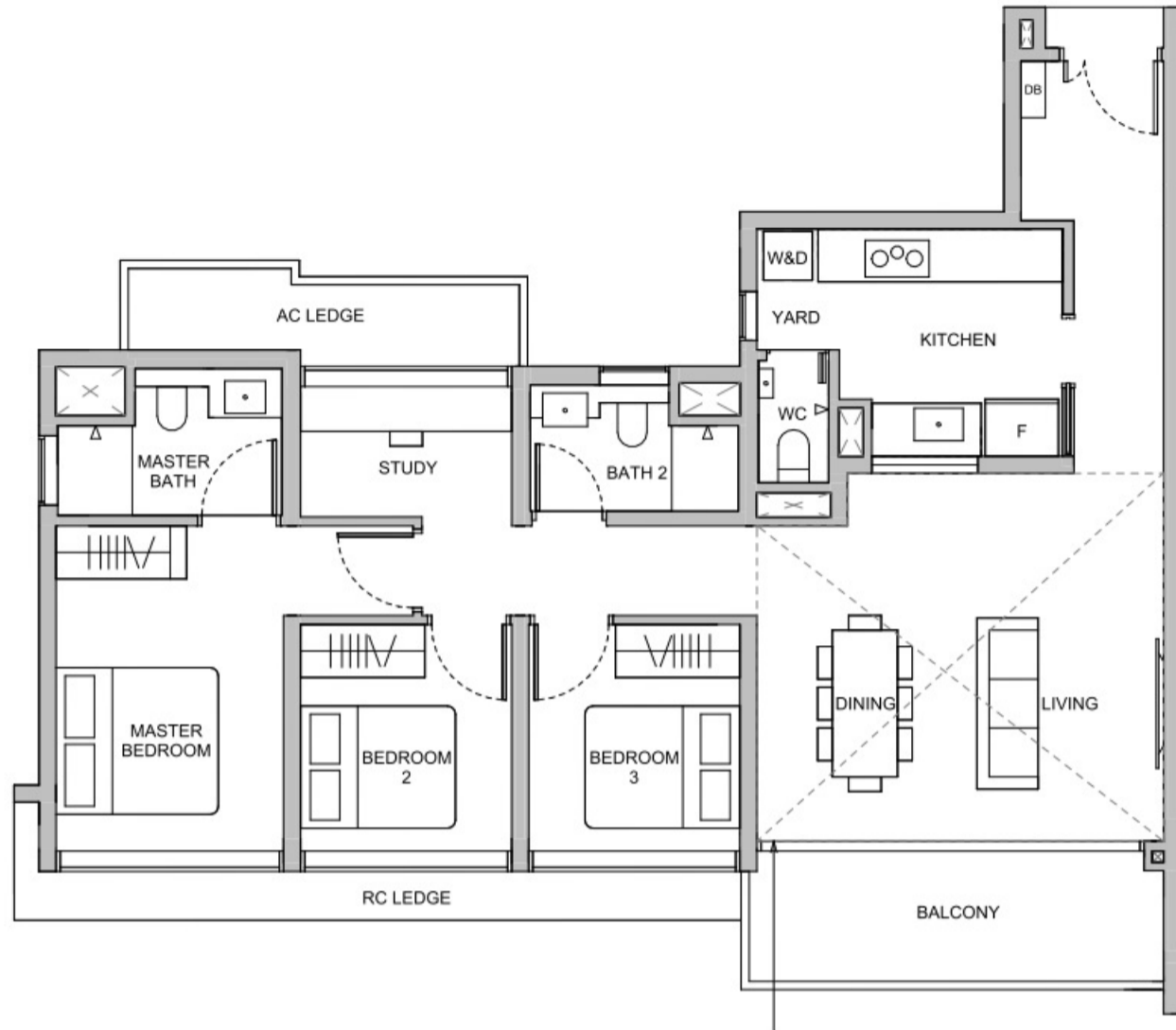


KEY PLAN NOT TO SCALE

# 3-Bedroom Premium

**TYPE C8P**  
110 sqm / 1184 sqft

**BLK 26**  
#15-12 to #22-12



**TYPE C8P(L)**  
134 sqm / 1442 sqft

Area is inclusive of Strata Void above living and dining as per dotted line

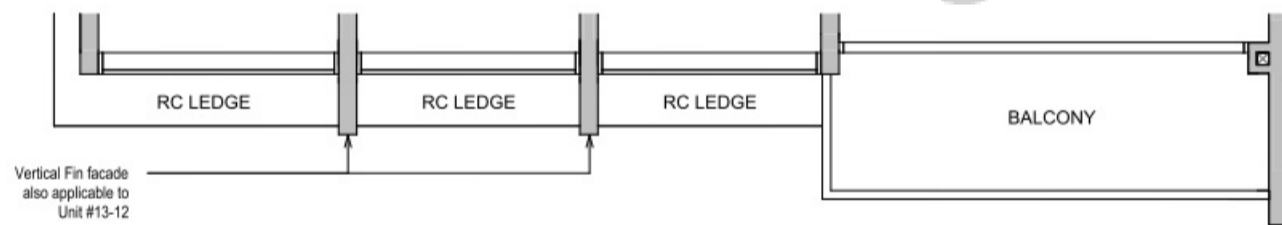
**BLK 26**  
#13-12  
#23-12



Dotted line denotes Strata Void area for Type C8P(L)

**TYPE C8P**  
110 sqm / 1184 sqft

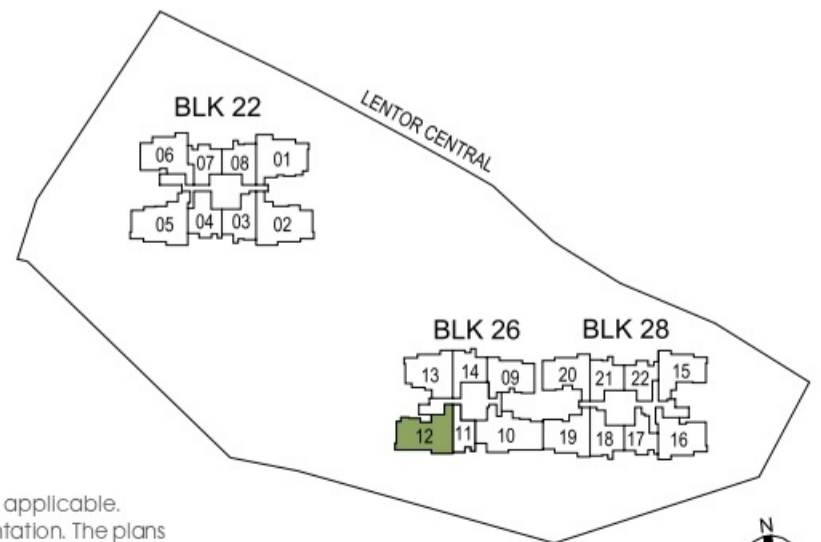
**BLK 26**  
#02-12 to #12-12



Building Plan Reference No: A1986-00001-2022-BP01  
Building Plan Approval Date: 29 September 2023

DB DISTRIBUTION BOARD      WD WASHER CUM DRYER      W&D WASHER AND DRYER  
F FRIDGE                      WC WATER CLOSET

Area includes air-conditioner (AC) ledge, balcony, private enclosed space (PES) and strata void where applicable. Some units are mirror images of the floor plans shown in the brochure. Please refer to the key plan for orientation. The plans are subject to change as may be required or approved by the relevant authorities and do not form part of any offer or contract. Areas are estimates only and are subject to final survey. The balcony and PES shall not be enclosed unless with the approved balcony screen. For an illustration of the approved balcony screen, please refer to Annexure A of this brochure.



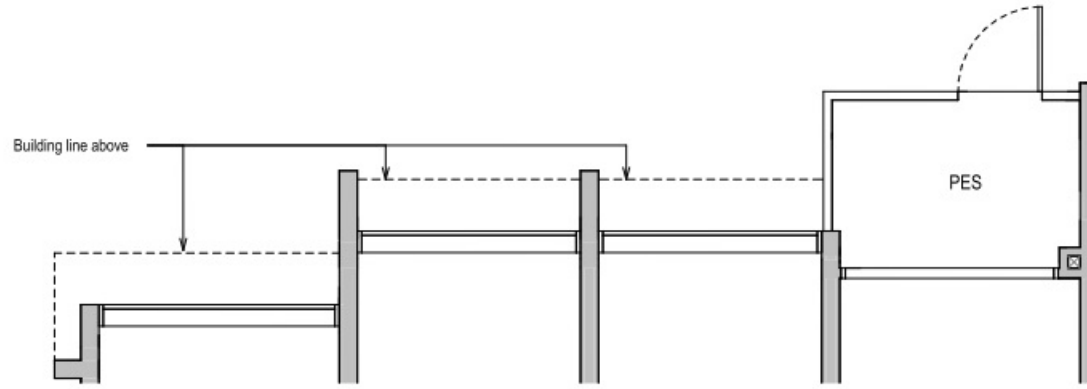
KEY PLAN NOT TO SCALE



# 3-Bedroom + Study

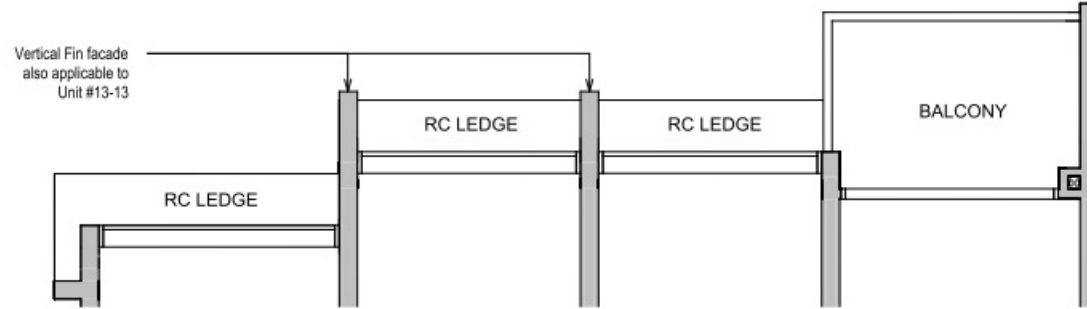
## TYPE C4S(G) 95 sqm / 1023 sqft

BLK 26  
#01-13



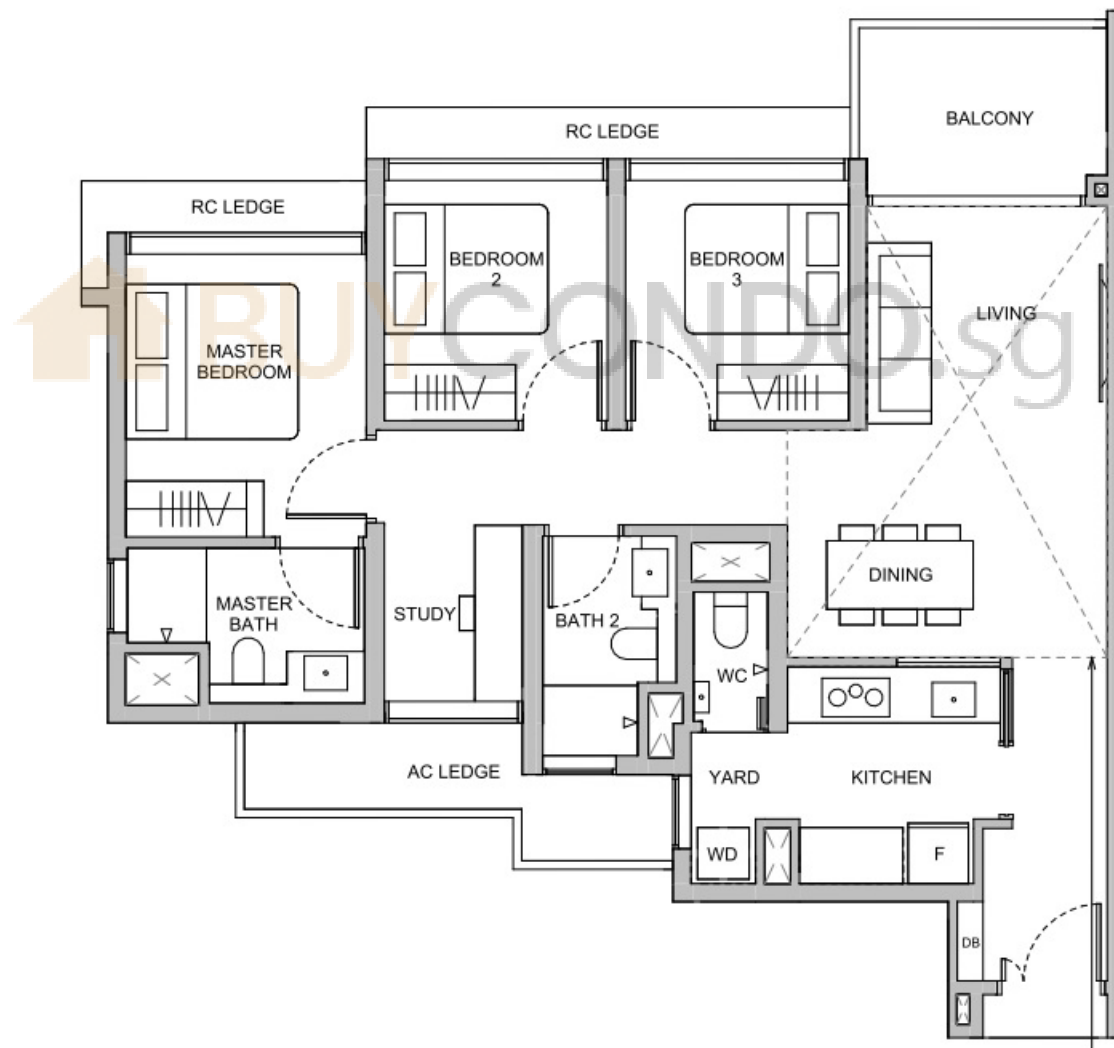
## TYPE C4S 95 sqm / 1023 sqft

BLK 26  
#02-13 to #12-13



## TYPE C4S 95 sqm / 1023 sqft

BLK 26  
#15-13 to #22-13



## TYPE C4S(L) 114 sqm / 1227 sqft

Area is inclusive of Strata Void above living and dining as per dotted line

BLK 26  
#13-13  
#23-13

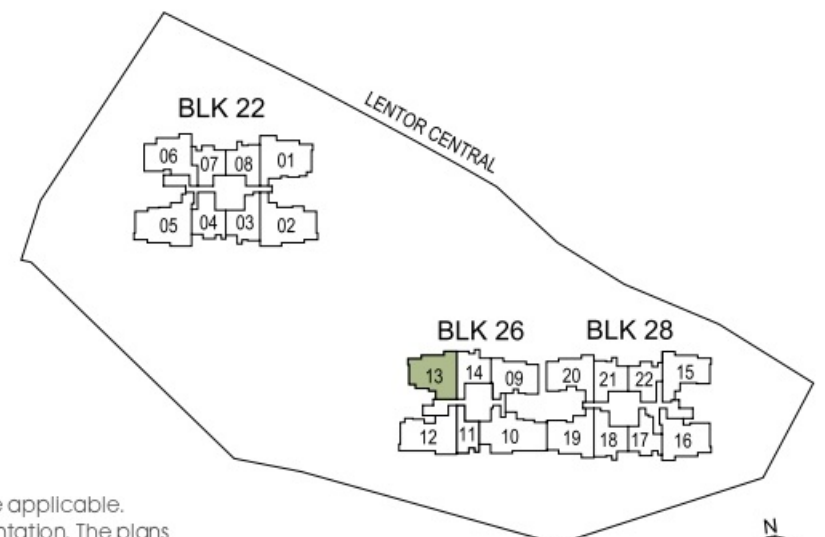
Dotted line denotes Strata Void area for Type C4S(L)



Building Plan Reference No: A1986-00001-2022-BP01  
Building Plan Approval Date: 29 September 2023

DB DISTRIBUTION BOARD      WD WASHER CUM DRYER      W&D WASHER AND DRYER  
F FRIDGE                      WC WATER CLOSET

Area includes air-conditioner (AC) ledge, balcony, private enclosed space (PES) and strata void where applicable. Some units are mirror images of the floor plans shown in the brochure. Please refer to the key plan for orientation. The plans are subject to change as may be required or approved by the relevant authorities and do not form part of any offer or contract. Areas are estimates only and are subject to final survey. The balcony and PES shall not be enclosed unless with the approved balcony screen. For an illustration of the approved balcony screen, please refer to Annexure A of this brochure.



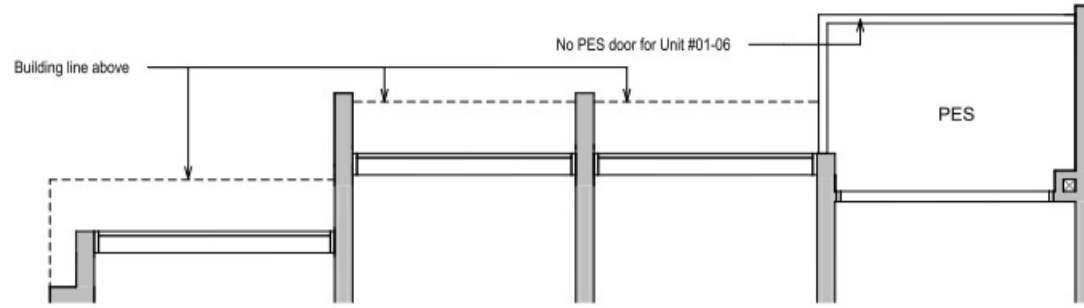
KEY PLAN NOT TO SCALE



# 3-Bedroom + Study

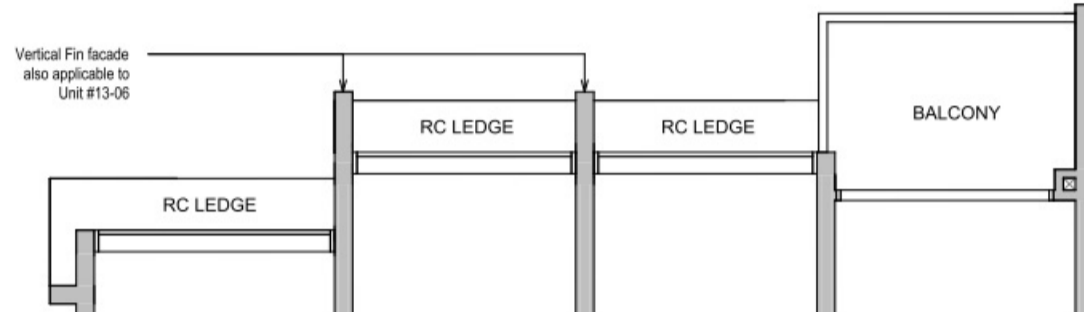
**TYPE C7S(G)**  
99 sqm / 1066 sqft

**BLK 22**  
#01-06



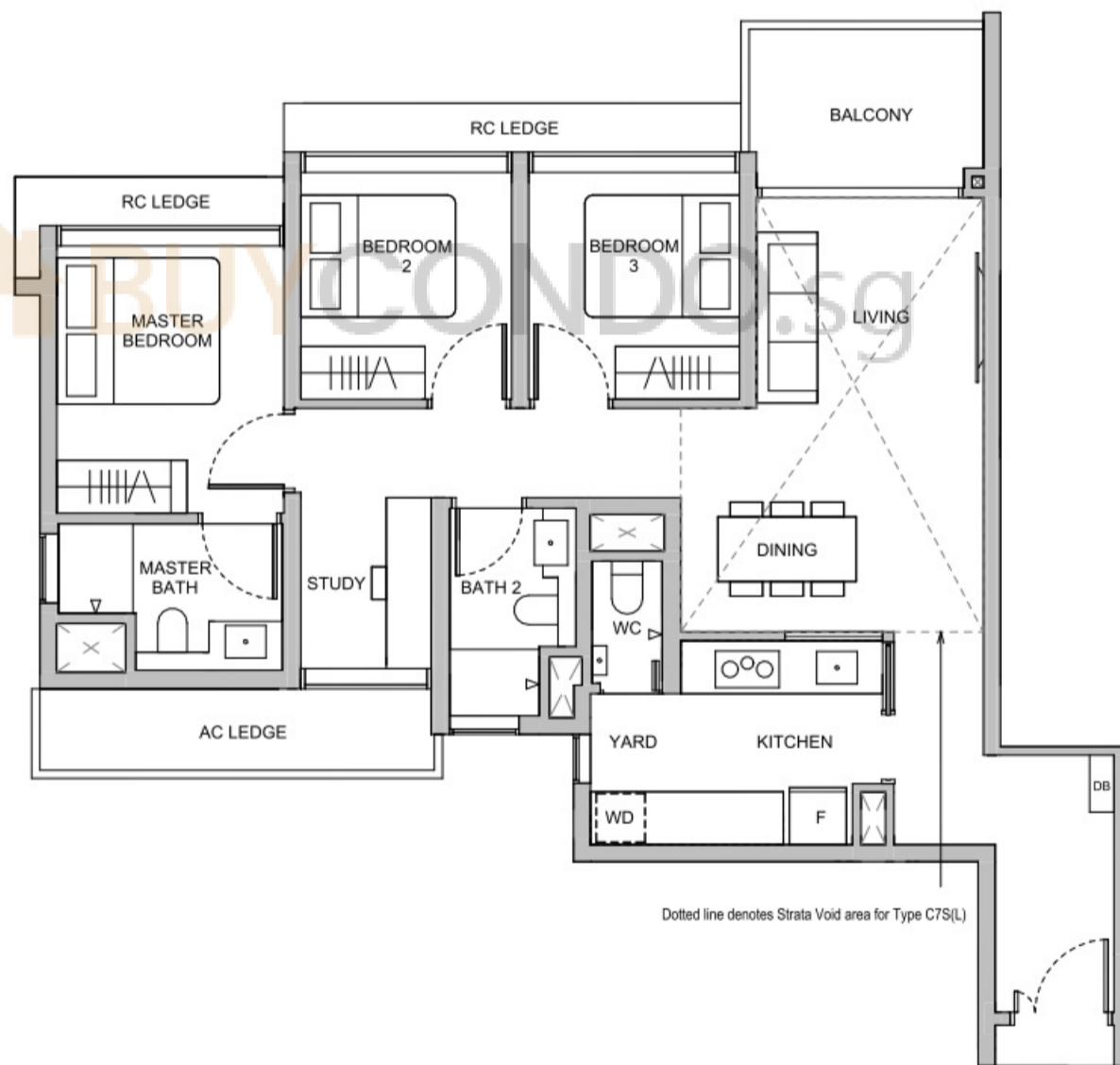
**TYPE C7S**  
99 sqm / 1066 sqft

**BLK 22**  
#02-06 to #12-06



**TYPE C7S**  
99 sqm / 1066 sqft

**BLK 22**  
#15-06 to #22-06



**TYPE C7S(L)**  
118 sqm / 1270 sqft

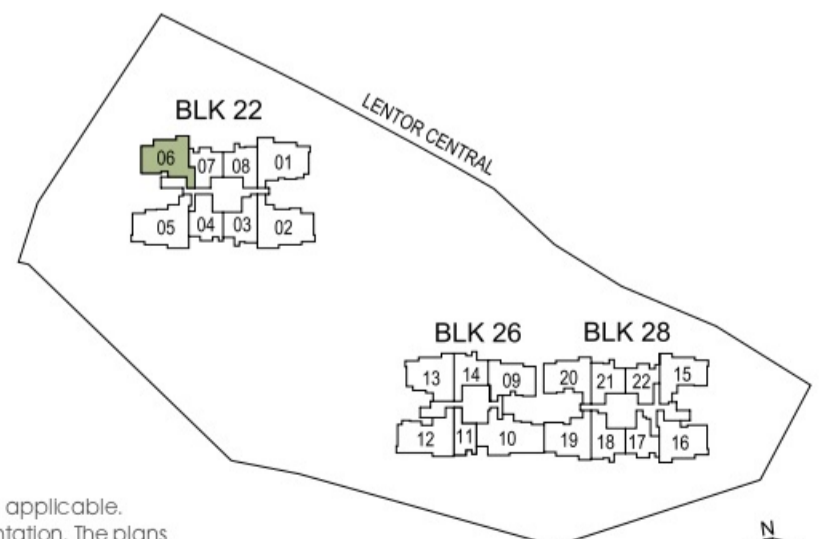
Area is inclusive of Strata Void above living and dining as per dotted line

**BLK 22**  
#13-06  
#23-06



Building Plan Reference No: A1986-00001-2022-BP01  
Building Plan Approval Date: 29 September 2023

DB DISTRIBUTION BOARD  
F FRIDGE  
WD WASHER CUM DRYER  
WC WATER CLOSET  
W&D WASHER AND DRYER



Area Includes air-conditioner (AC) ledge, balcony, private enclosed space (PES) and strata void where applicable. Some units are mirror images of the floor plans shown in the brochure. Please refer to the key plan for orientation. The plans are subject to change as may be required or approved by the relevant authorities and do not form part of any offer or contract. Areas are estimates only and are subject to final survey. The balcony and PES shall not be enclosed unless with the approved balcony screen. For an illustration of the approved balcony screen, please refer to Annexure A of this brochure.

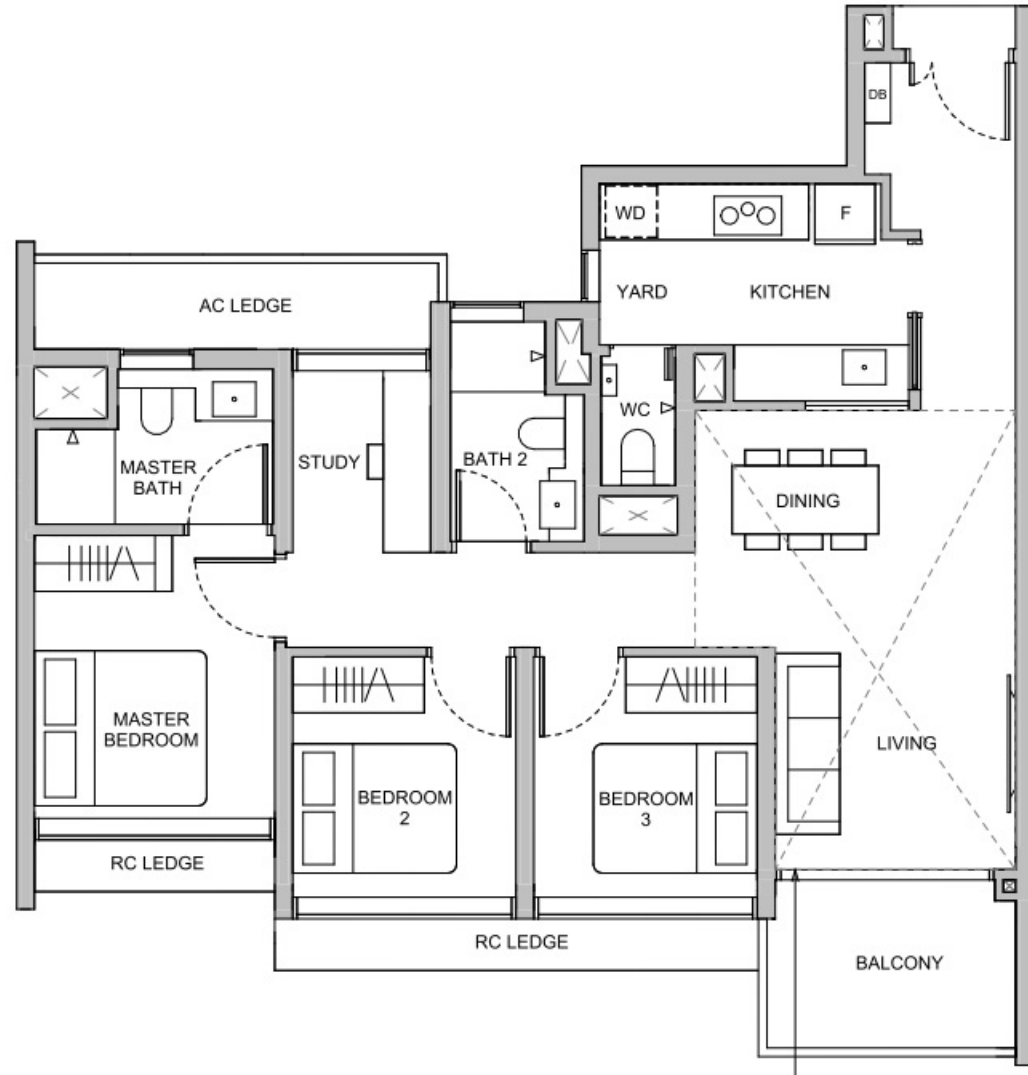


KEY PLAN NOT TO SCALE

# 3-Bedroom + Study

**TYPE C5S**  
96 sqm / 1033 sqft

**BLK 28**  
#15-19 to #22-19



**TYPE C5S(L)**  
115 sqm / 1238 sqft

Area is inclusive of Strata Void above living and dining as per dotted line

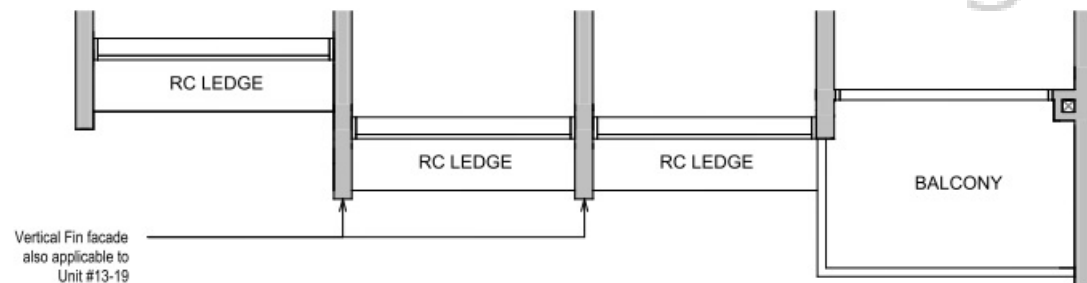
**BLK 28**  
#13-19  
#23-19

Dotted line denotes Strata Void area for Type C5S(L)



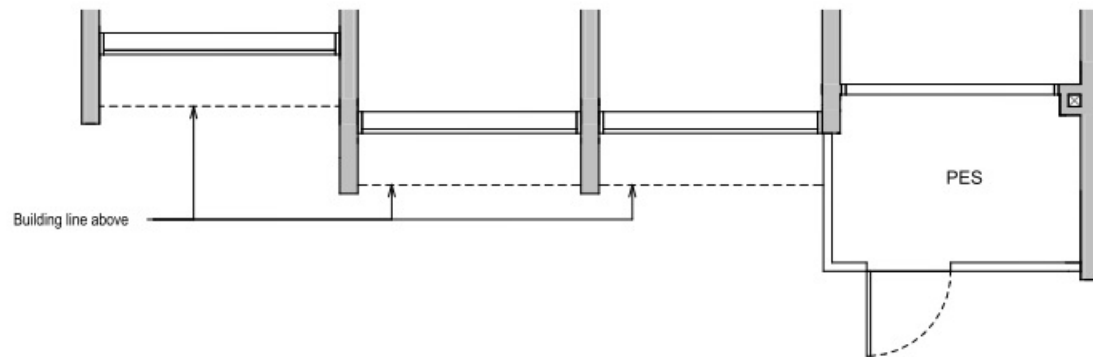
**TYPE C5S**  
96 sqm / 1033 sqft

**BLK 28**  
#02-19 to #12-19



**TYPE C5S(G)**  
96 sqm / 1033 sqft

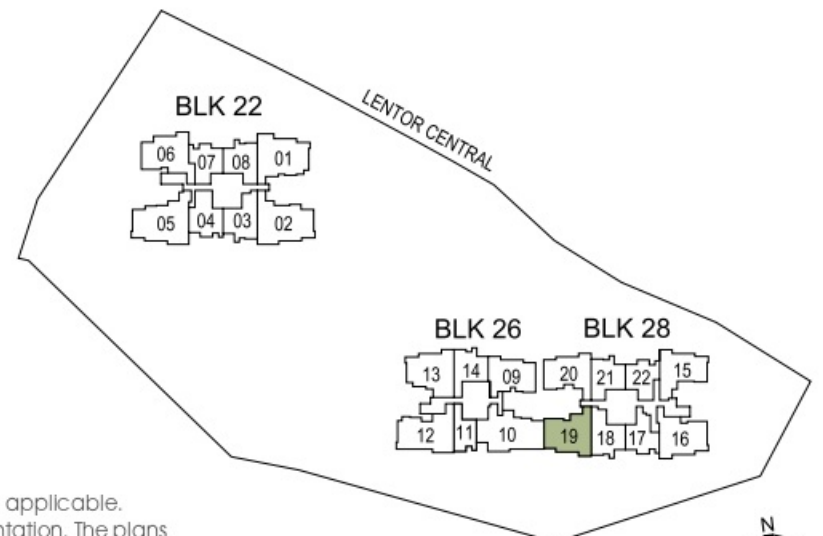
**BLK 28**  
#01-19



Building Plan Reference No: A1986-00001-2022-BP01  
Building Plan Approval Date: 29 September 2023

DB DISTRIBUTION BOARD    WD WASHER CUM DRYER    W&D WASHER AND DRYER  
F FRIDGE    WC WATER CLOSET

Area includes air-conditioner (AC) ledge, balcony, private enclosed space (PES) and strata void where applicable. Some units are mirror images of the floor plans shown in the brochure. Please refer to the key plan for orientation. The plans are subject to change as may be required or approved by the relevant authorities and do not form part of any offer or contract. Areas are estimates only and are subject to final survey. The balcony and PES shall not be enclosed unless with the approved balcony screen. For an illustration of the approved balcony screen, please refer to Annexure A of this brochure.

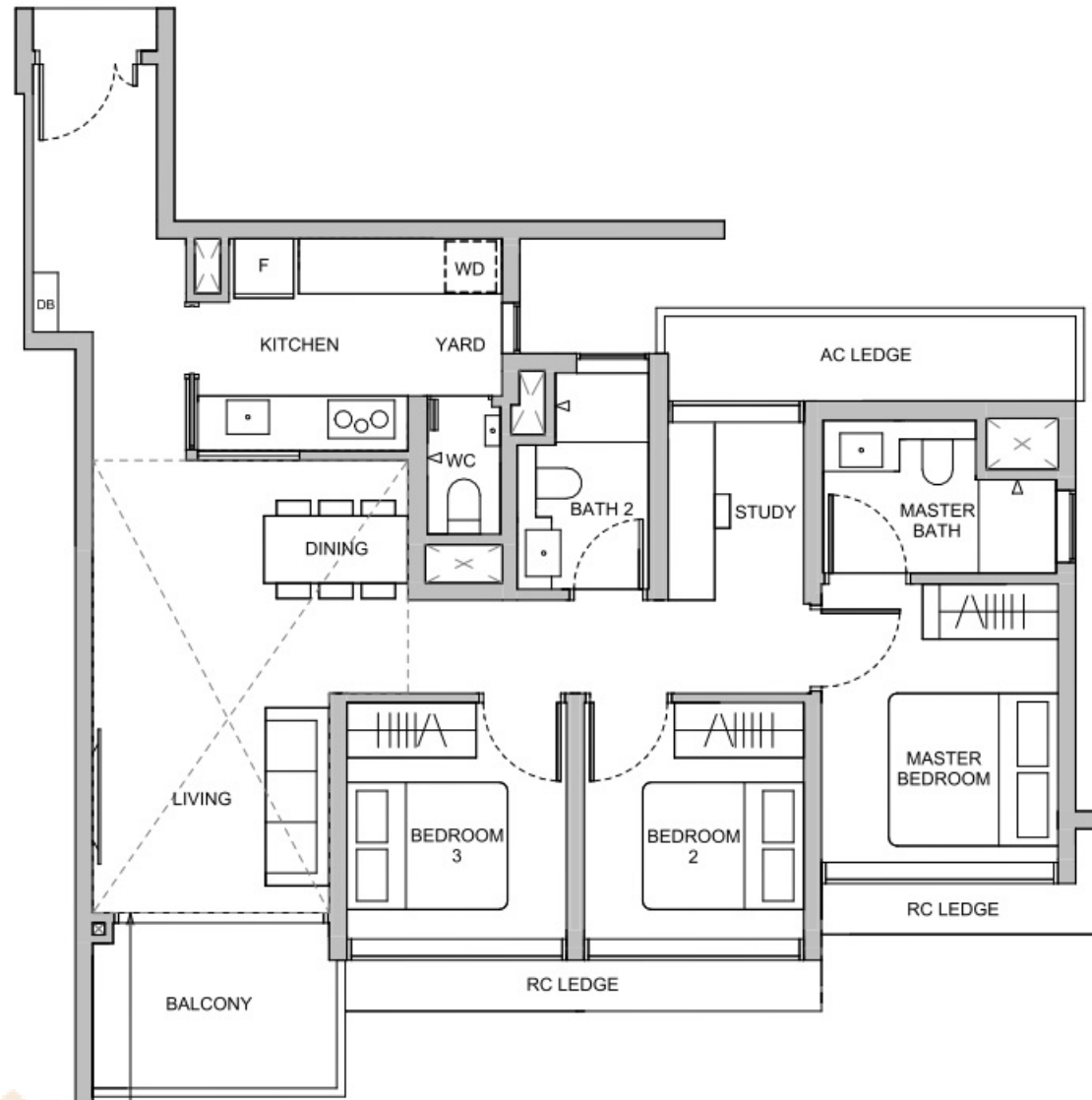


KEY PLAN NOT TO SCALE

# 3-Bedroom + Study

**TYPE C6S**  
98 sqm / 1055 sqft

**BLK 28**  
#15-16 to #22-16



**TYPE C6S(L)**  
117 sqm / 1259 sqft

Area is inclusive of Strata Void above living and dining as per dotted line

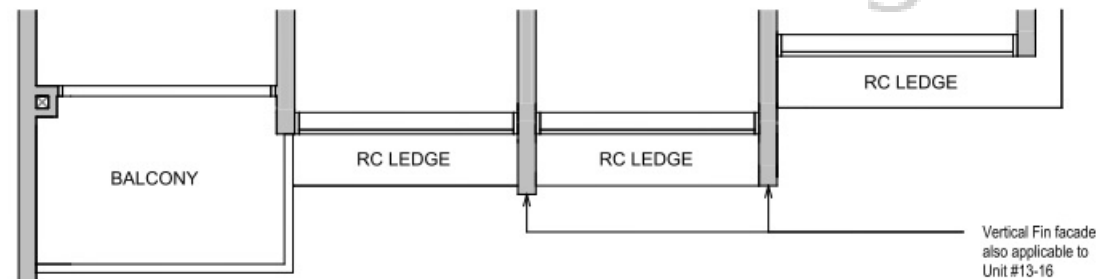
**BLK 28**  
#13-16  
#23-16



Dotted line denotes Strata Void area for Type C6S(L)

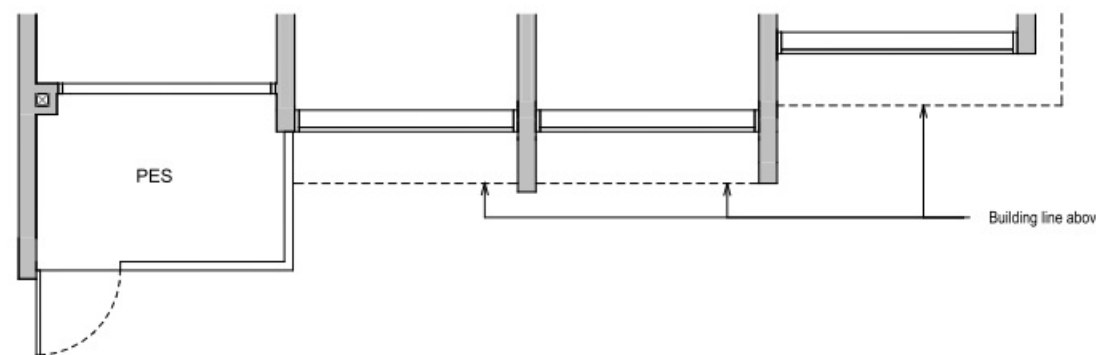
**TYPE C6S**  
98 sqm / 1055 sqft

**BLK 28**  
#02-16 to #12-16



**TYPE C6S(G)**  
98 sqm / 1055 sqft

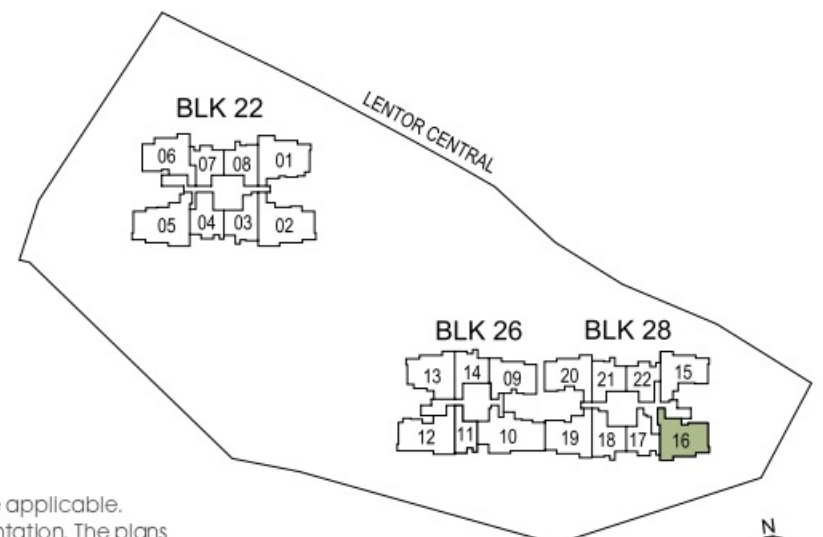
**BLK 28**  
#01-16



Building Plan Reference No: A1986-00001-2022-BP01  
Building Plan Approval Date: 29 September 2023

DB DISTRIBUTION BOARD      WD WASHER CUM DRYER      W&D WASHER AND DRYER  
F FRIDGE                      WC WATER CLOSET

Area includes air-conditioner (AC) ledge, balcony, private enclosed space (PES) and strata void where applicable. Some units are mirror images of the floor plans shown in the brochure. Please refer to the key plan for orientation. The plans are subject to change as may be required or approved by the relevant authorities and do not form part of any offer or contract. Areas are estimates only and are subject to final survey. The balcony and PES shall not be enclosed unless with the approved balcony screen. For an illustration of the approved balcony screen, please refer to Annexure A of this brochure.



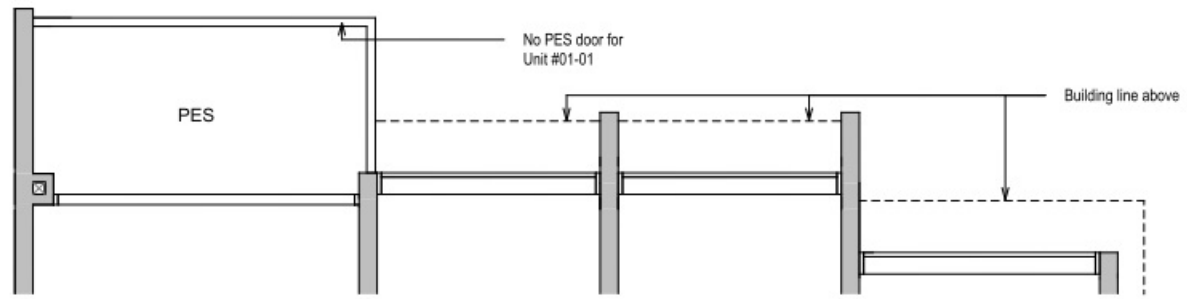
KEY PLAN NOT TO SCALE



# 4-Bedroom Classic

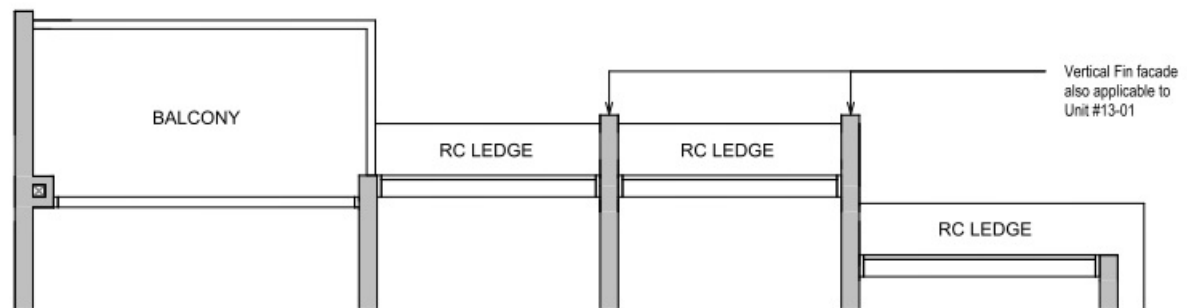
## TYPE D1C(G) 110 sqm / 1184 sqft

BLK 22  
#01-01



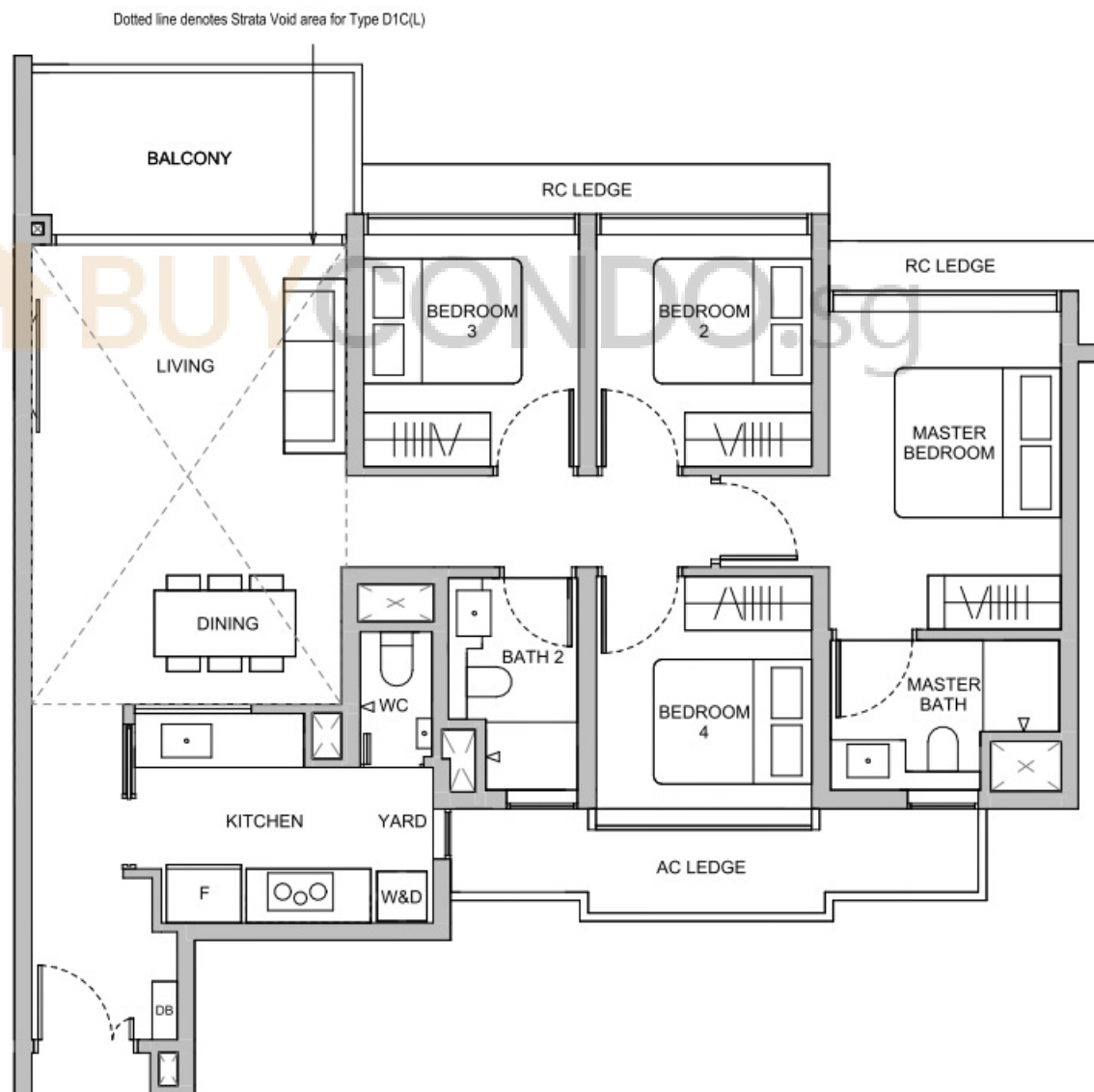
## TYPE D1C 110 sqm / 1184 sqft

BLK 22  
#02-01 to #12-01



## TYPE D1C 110 sqm / 1184 sqft

BLK 22  
#15-01 to #22-01



## TYPE D1C(L) 133 sqm / 1432 sqft

Area is inclusive of Strata Void above living and dining as per dotted line

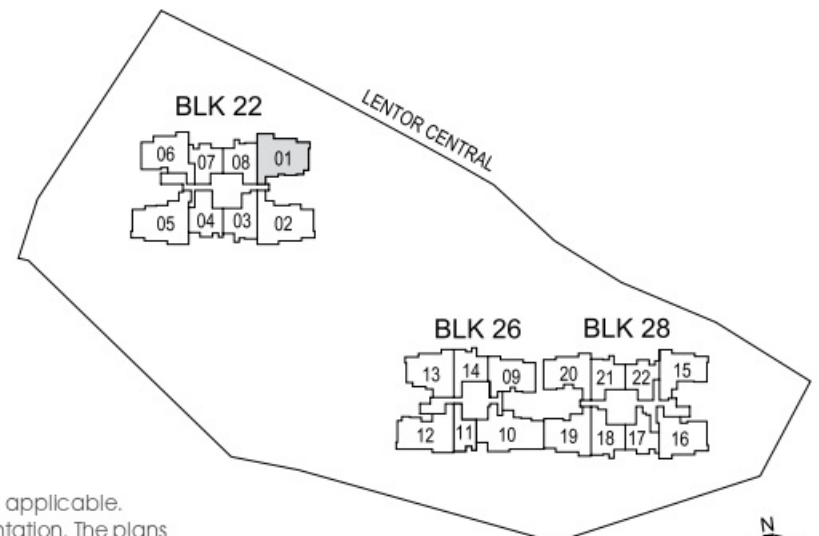
BLK 22  
#13-01  
#23-01



Building Plan Reference No: A1986-00001-2022-BP01  
Building Plan Approval Date: 29 September 2023

- DB DISTRIBUTION BOARD
- F FRIDGE
- WD WASHER CUM DRYER
- WC WATER CLOSET
- W&D WASHER AND DRYER

Area includes air-conditioner (AC) ledge, balcony, private enclosed space (PES) and strata void where applicable. Some units are mirror images of the floor plans shown in the brochure. Please refer to the key plan for orientation. The plans are subject to change as may be required or approved by the relevant authorities and do not form part of any offer or contract. Areas are estimates only and are subject to final survey. The balcony and PES shall not be enclosed unless with the approved balcony screen. For an illustration of the approved balcony screen, please refer to Annexure A of this brochure.



KEY PLAN NOT TO SCALE



# 4-Bedroom Premium

**TYPE D2P**  
122 sqm / 1313 sqft

**BLK 22**  
#15-02 to #22-02



**TYPE D2P(L)**  
146 sqm / 1572 sqft

Area is inclusive of Strata Void above living and dining as per dotted line

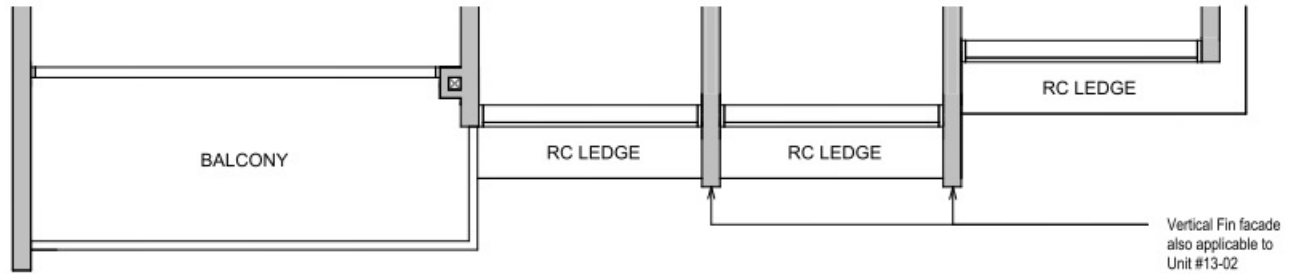
**BLK 22**  
#13-02  
#23-02



Dotted line denotes Strata Void area for Type D2P(L)

**TYPE D2P**  
122 sqm / 1313 sqft

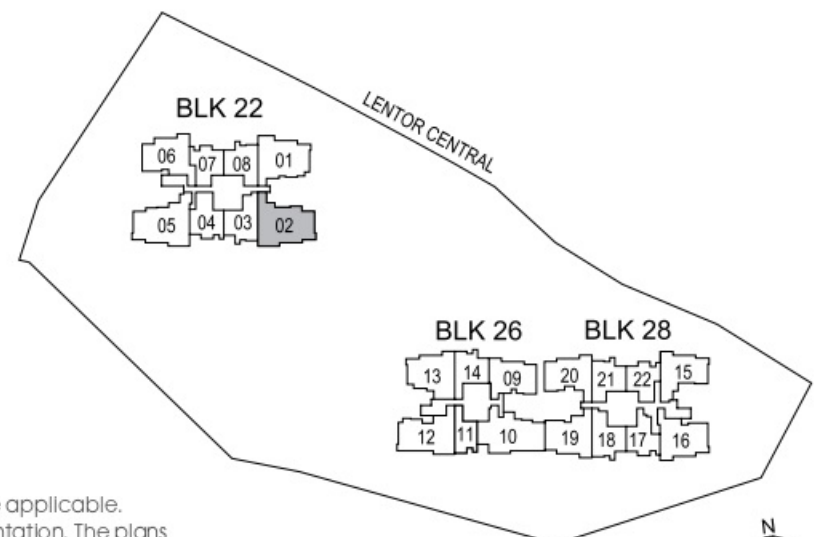
**BLK 22**  
#03-02 to #12-02



Building Plan Reference No: A1986-00001-2022-BP01  
Building Plan Approval Date: 29 September 2023

DB DISTRIBUTION BOARD      WD WASHER CUM DRYER      W&D WASHER AND DRYER  
F FRIDGE                          WC WATER CLOSET

Area includes air-conditioner (AC) ledge, balcony, private enclosed space (PES) and strata void where applicable. Some units are mirror images of the floor plans shown in the brochure. Please refer to the key plan for orientation. The plans are subject to change as may be required or approved by the relevant authorities and do not form part of any offer or contract. Areas are estimates only and are subject to final survey. The balcony and PES shall not be enclosed unless with the approved balcony screen. For an illustration of the approved balcony screen, please refer to Annexure A of this brochure.

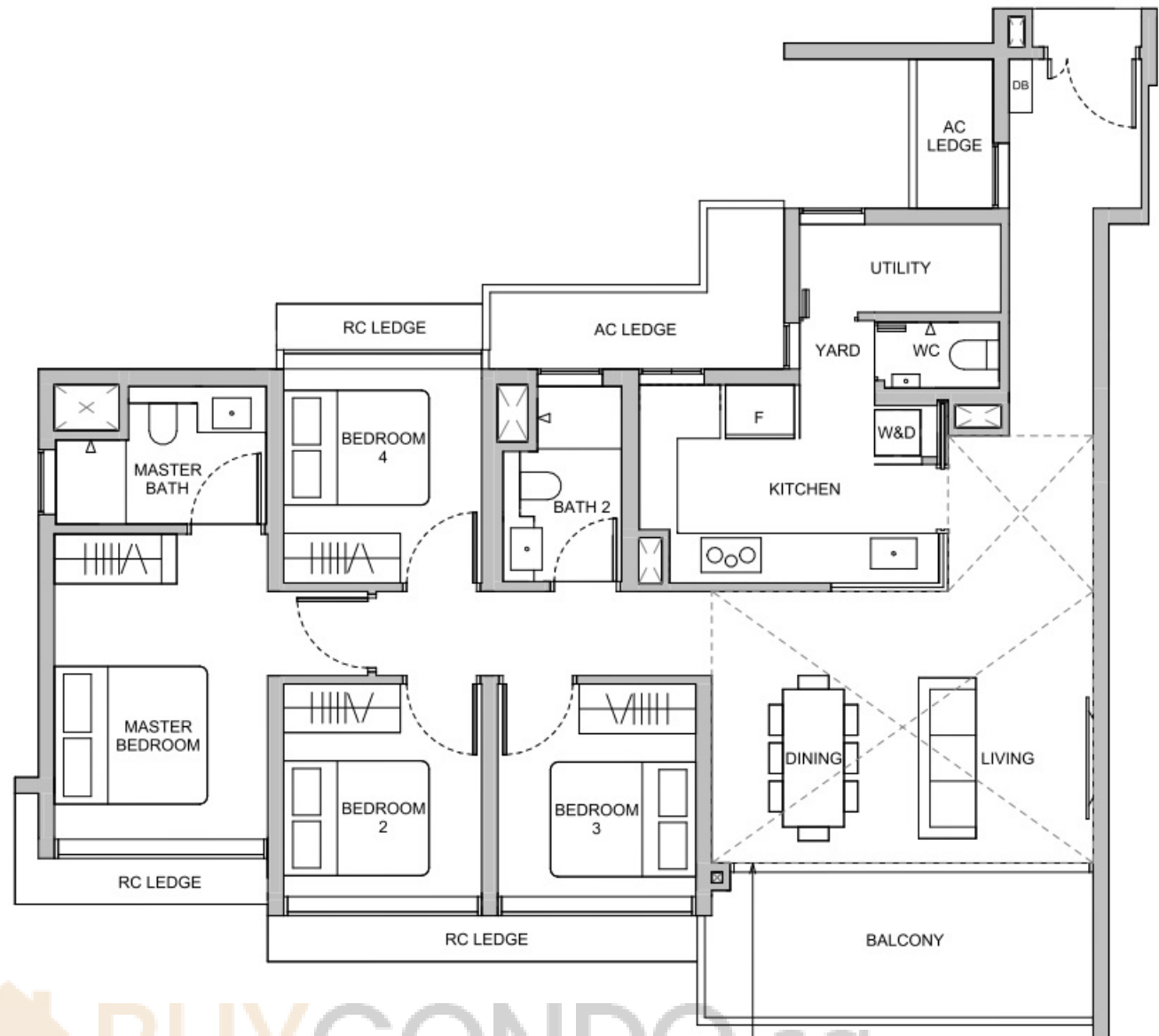


KEY PLAN NOT TO SCALE

# 4-Bedroom Premium

**TYPE D3P**  
123 sqm / 1324 sqft

**BLK 22**  
#15-05 to #22-05



**TYPE D3P(L)**  
147 sqm / 1582 sqft

Area is inclusive of Strata Void above living and dining as per dotted line

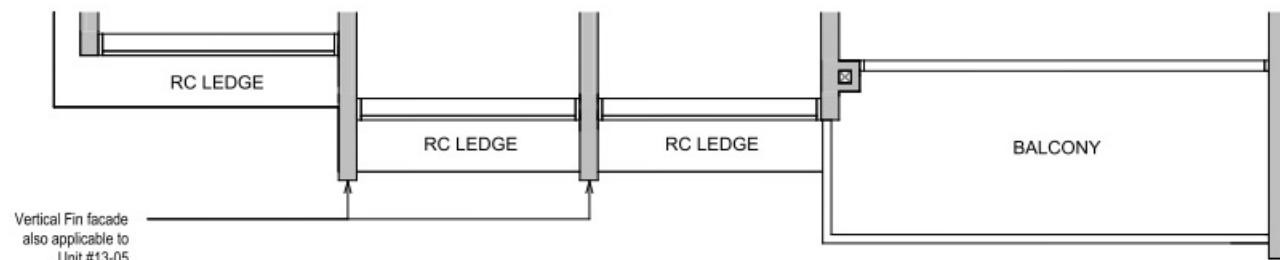
**BLK 22**  
#13-05  
#23-05



Dotted line denotes Strata Void area for Type D3P(L)

**TYPE D3P**  
123 sqm / 1324 sqft

**BLK 22**  
#03-05 to #12-05



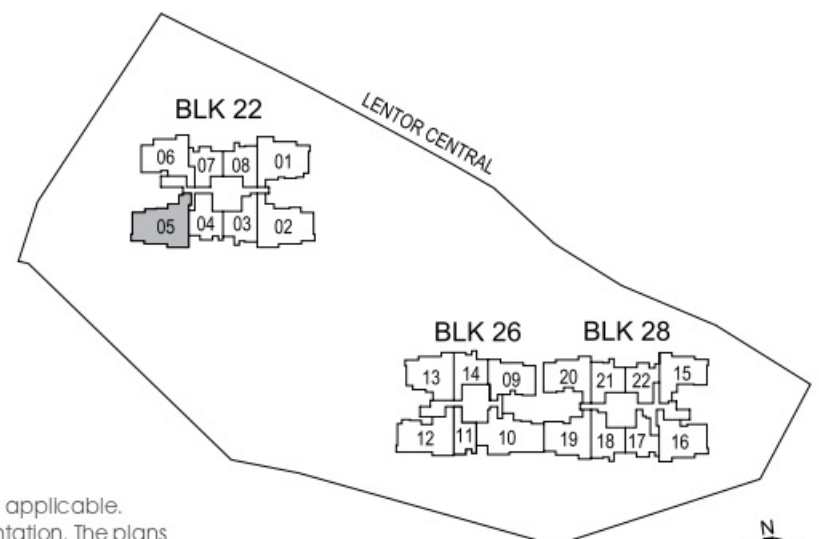
Vertical Fin facade also applicable to Unit #13-05



Building Plan Reference No: A1986-00001-2022-BP01  
Building Plan Approval Date: 29 September 2023

DB DISTRIBUTION BOARD      WD WASHER CUM DRYER      W&D WASHER AND DRYER  
F FRIDGE                          WC WATER CLOSET

Area includes air-conditioner (AC) ledge, balcony, private enclosed space (PES) and strata void where applicable. Some units are mirror images of the floor plans shown in the brochure. Please refer to the key plan for orientation. The plans are subject to change as may be required or approved by the relevant authorities and do not form part of any offer or contract. Areas are estimates only and are subject to final survey. The balcony and PES shall not be enclosed unless with the approved balcony screen. For an illustration of the approved balcony screen, please refer to Annexure A of this brochure.

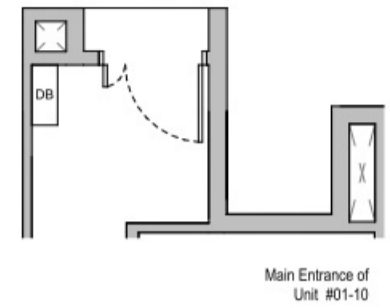


KEY PLAN NOT TO SCALE

# 4-Bedroom Premium

**TYPE D4P**  
125 sqm / 1346 sqft

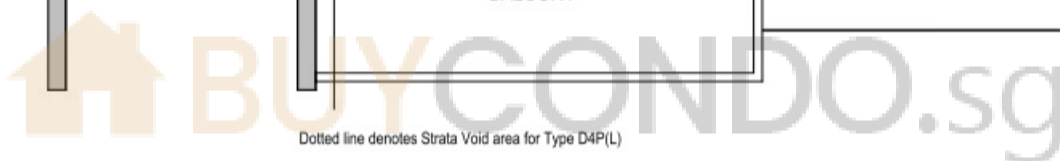
**BLK 26**  
#15-10 to #22-10



**TYPE D4P(L)**  
146 sqm / 1572 sqft

Area is inclusive of Strata Void above living and dining as per dotted line

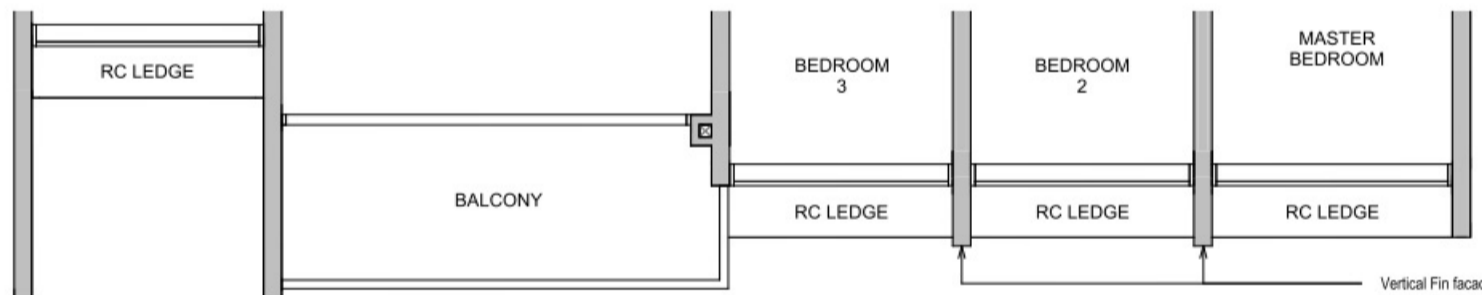
**BLK 26**  
#13-10  
#23-10



Dotted line denotes Strata Void area for Type D4P(L)

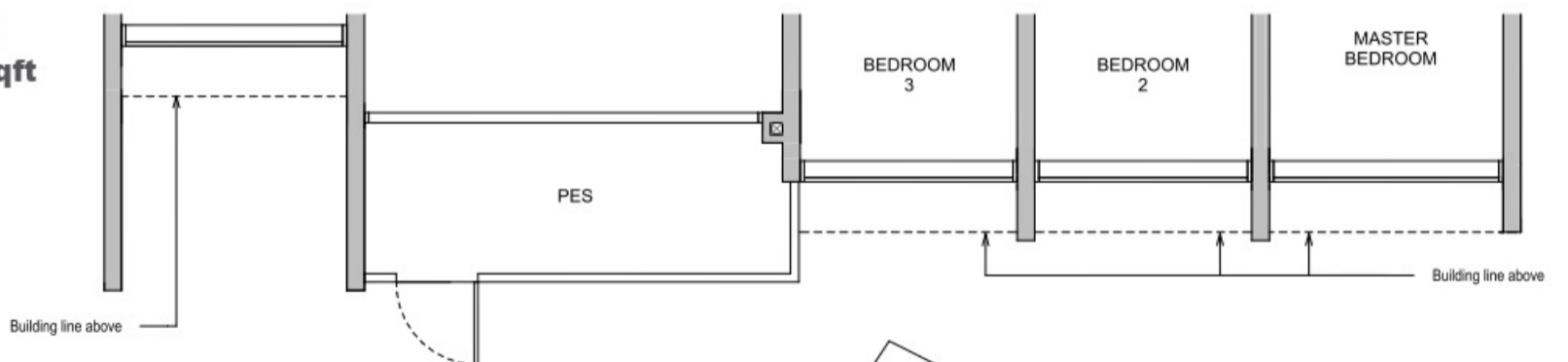
**TYPE D4P**  
125 sqm / 1346 sqft

**BLK 26**  
#02-10 to #12-10



**TYPE D4P(G)**  
124 sqm / 1335 sqft

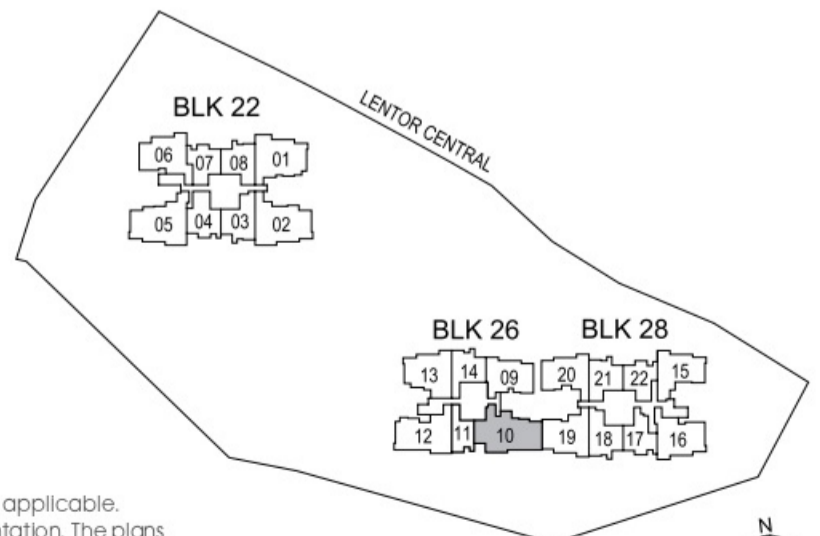
**BLK 26**  
#01-10



Building Plan Reference No: A1986-00001-2022-BP01  
Building Plan Approval Date: 29 September 2023

- DB DISTRIBUTION BOARD
- F FRIDGE
- WD WASHER CUM DRYER
- WC WATER CLOSET
- W&D WASHER AND DRYER

Area Includes air-conditioner (AC) ledge, balcony, private enclosed space (PES) and strata void where applicable. Some units are mirror images of the floor plans shown in the brochure. Please refer to the key plan for orientation. The plans are subject to change as may be required or approved by the relevant authorities and do not form part of any offer or contract. Areas are estimates only and are subject to final survey. The balcony and PES shall not be enclosed unless with the approved balcony screen. For an illustration of the approved balcony screen, please refer to Annexure A of this brochure.



KEY PLAN NOT TO SCALE