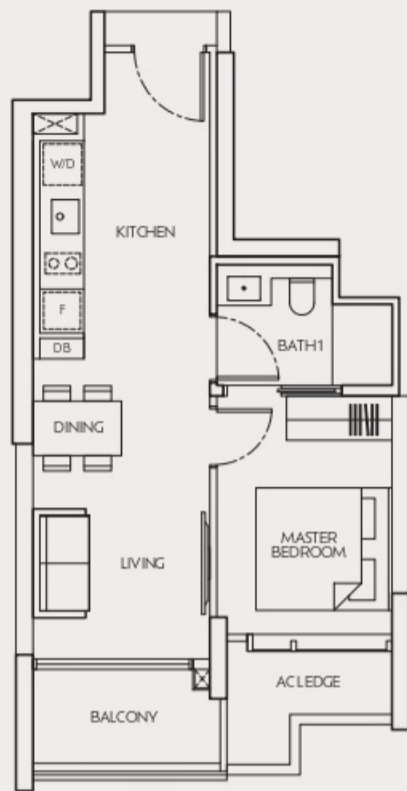


1-BEDROOM

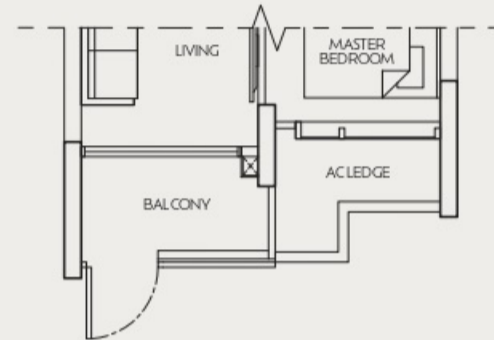
TYPE A

49 sq m / 527 sq ft
 #04-05 to #23-05
 #25-05 to #40-05



TYPE A(g)

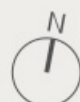
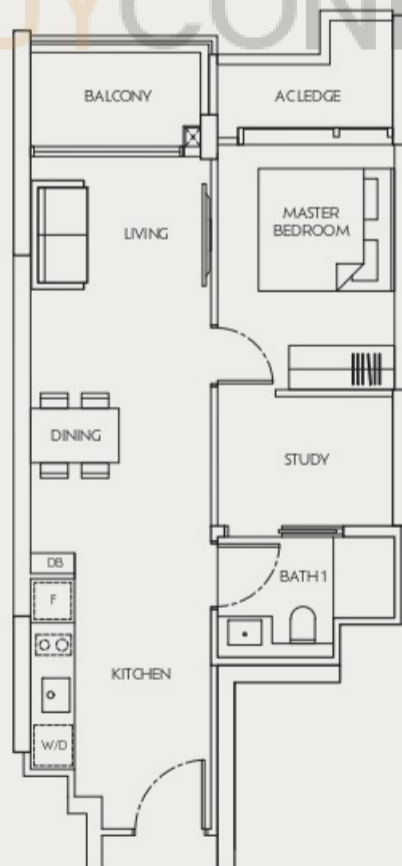
49 sq m / 527 sq ft
 #03-05



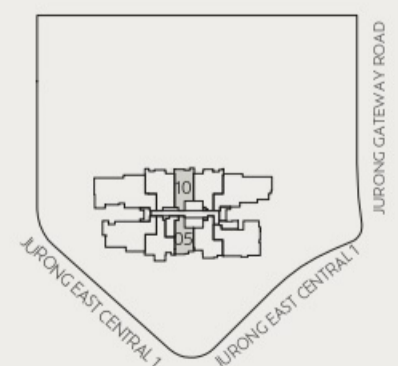
1-BEDROOM + STUDY

TYPE As

58 sq m / 624 sq ft
 #03-10 to #23-10
 #25-10 to #40-10



Area includes air-con (AC) ledge, balcony and strata void where applicable. Please refer to the key plan for orientation. The plans are subjected to change as may be approved by relevant authorities. All floor plans are approximate measurements only and are subjected to government re-survey. The balcony shall not be enclosed unless with the approved balcony screen. For an illustration of the approved balcony screen, please refer to the diagram annexed hereto as "Annexure A". The installation and cost of the balcony screen shall be borne by purchaser.

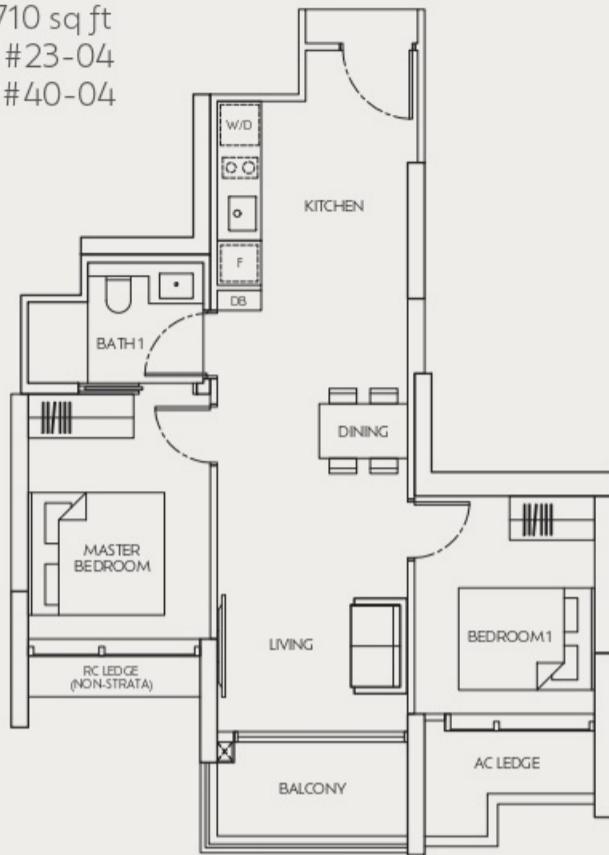


KEY PLAN NOT TO SCALE

2-BEDROOM

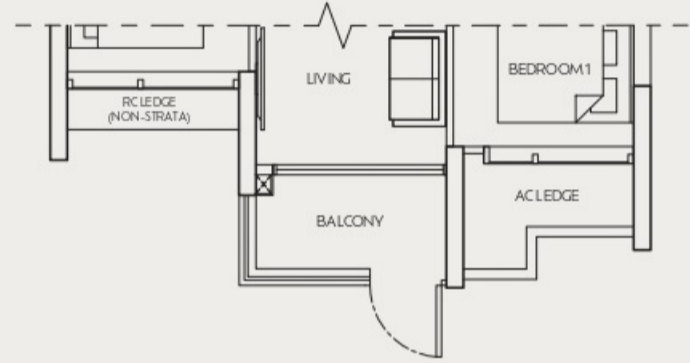
TYPE B1

66 sq m / 710 sq ft
#04-04 to #23-04
#25-04 to #40-04



TYPE B1(g)

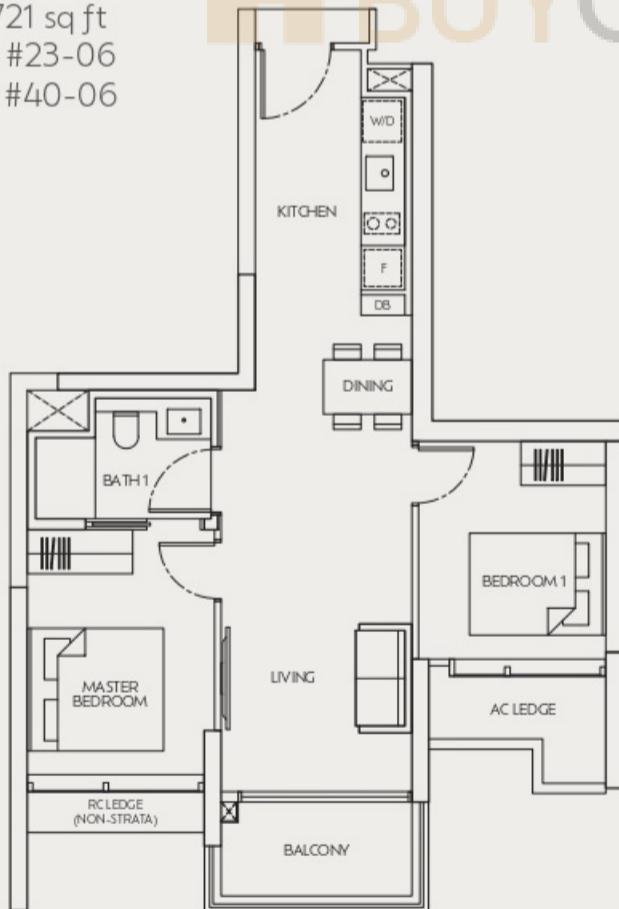
66 sq m / 710 sq ft
#03-04



2-BEDROOM

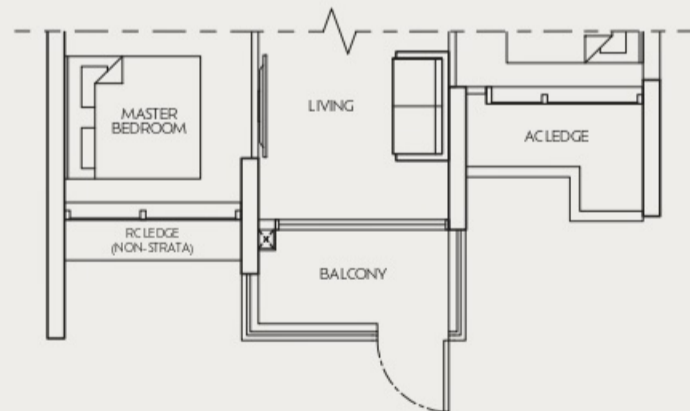
TYPE B2

67 sq m / 721 sq ft
#04-06 to #23-06
#25-06 to #40-06

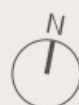


TYPE B2(g)

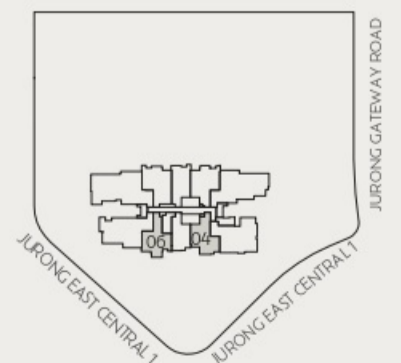
67 sq m / 721 sq ft
#03-06



0 1 2 3 4 5m



Area includes air-con (AC) ledge, balcony and strata void where applicable. Please refer to the key plan for orientation. The plans are subjected to change as may be approved by relevant authorities. All floor plans are approximate measurements only and are subjected to government re-survey. The balcony shall not be enclosed unless with the approved balcony screen. For an illustration of the approved balcony screen, please refer to the diagram annexed hereto as "Annexure A". The installation and cost of the balcony screen shall be borne by purchaser.

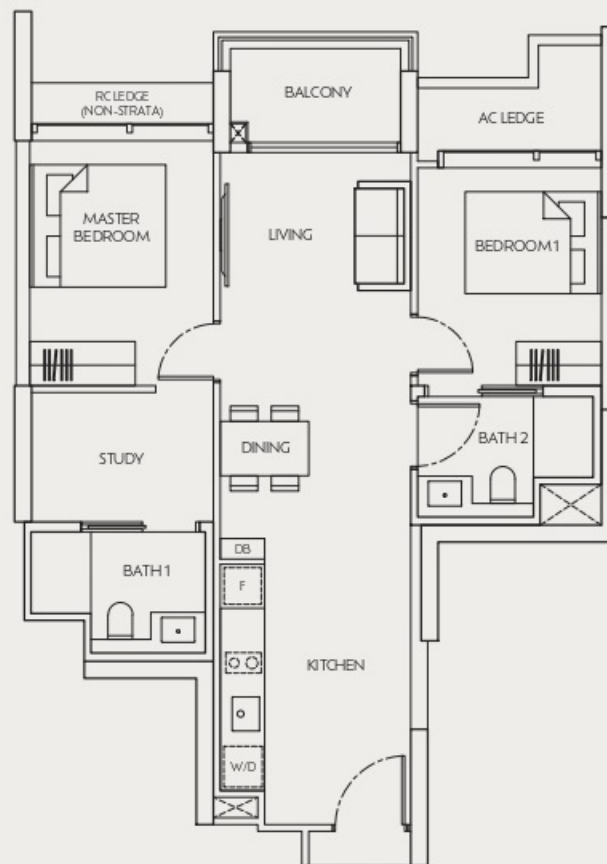


KEY PLAN NOT TO SCALE

2-BEDROOM + STUDY

TYPE Bs1

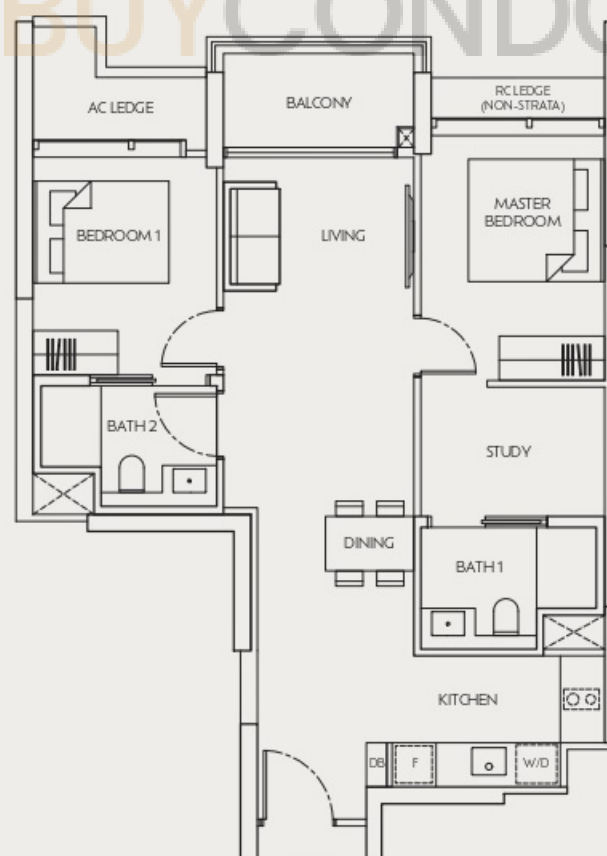
76 sq m / 818 sq ft
 #03-01 to #23-01
 #25-01 to #40-01



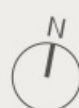
2-BEDROOM + STUDY

TYPE Bs2

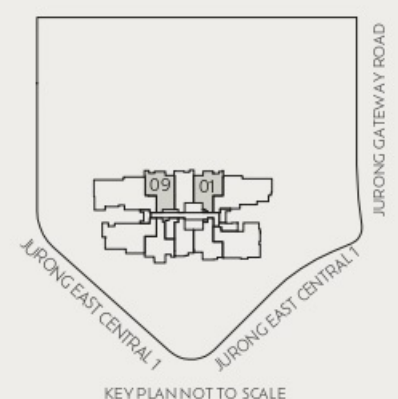
79 sq m / 850 sq ft
 #03-09 to #23-09
 #25-09 to #40-09



BUYCONDO.sg



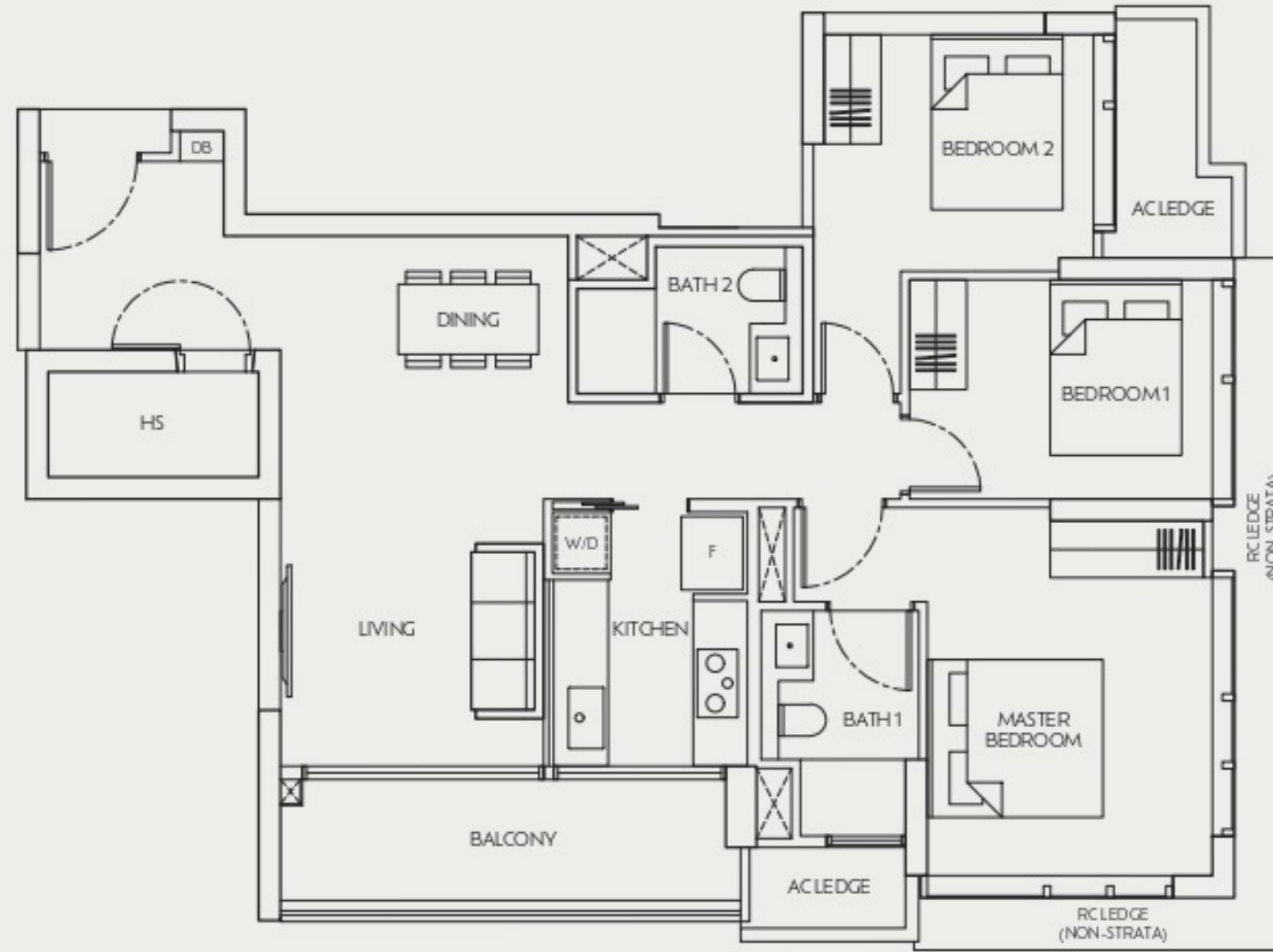
Area includes air-con (AC) ledge, balcony and strata void where applicable. Please refer to the key plan for orientation. The plans are subjected to change as may be approved by relevant authorities. All floor plans are approximate measurements only and are subjected to government re-survey. The balcony shall not be enclosed unless with the approved balcony screen. For an illustration of the approved balcony screen, please refer to the diagram annexed hereto as "Annexure A". The installation and cost of the balcony screen shall be borne by purchaser.



3-BEDROOM

TYPE C1

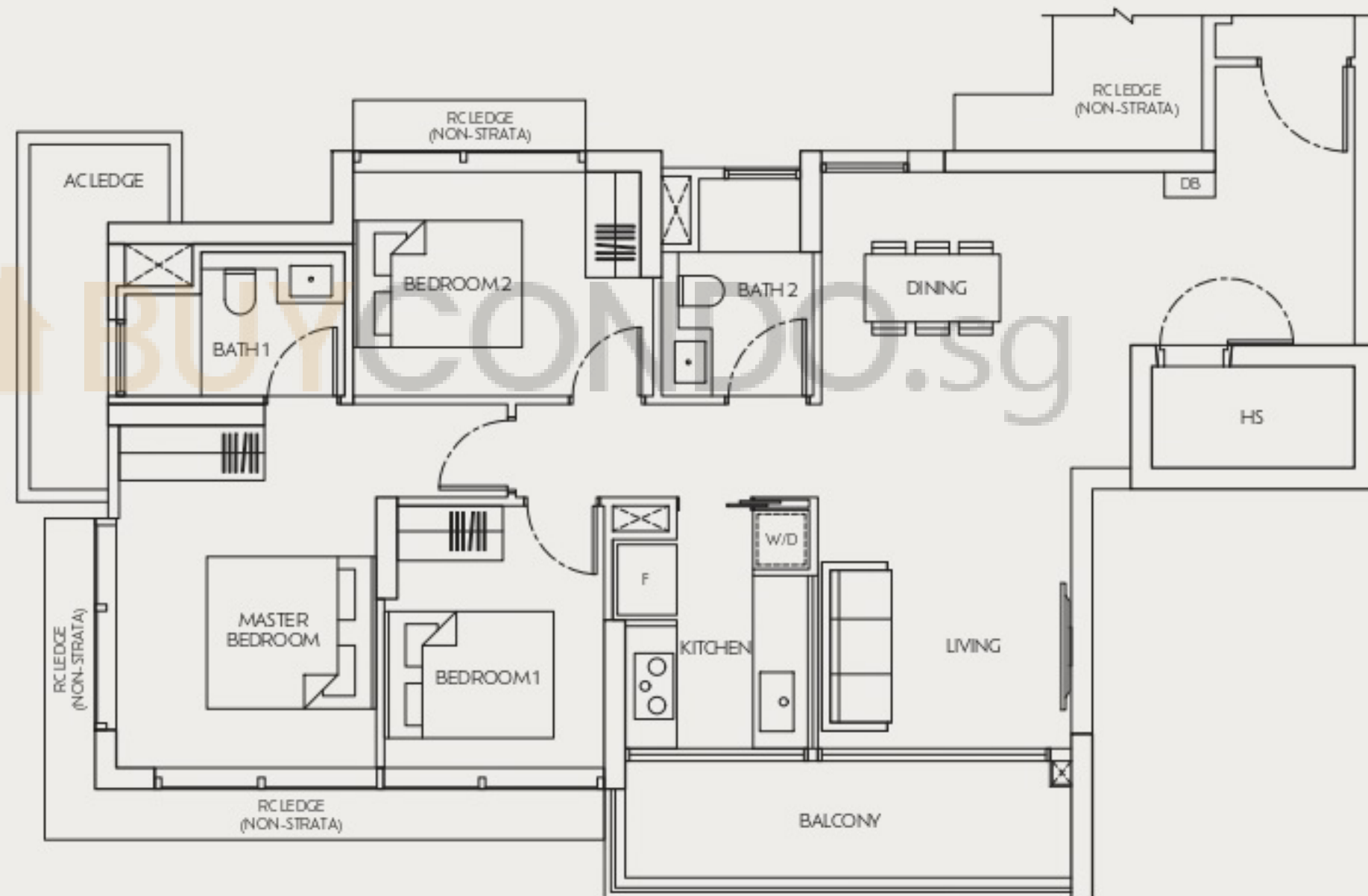
106 sq m / 1,141 sq ft
 #04-03 to #23-03
 #25-03 to #40-03



3-BEDROOM

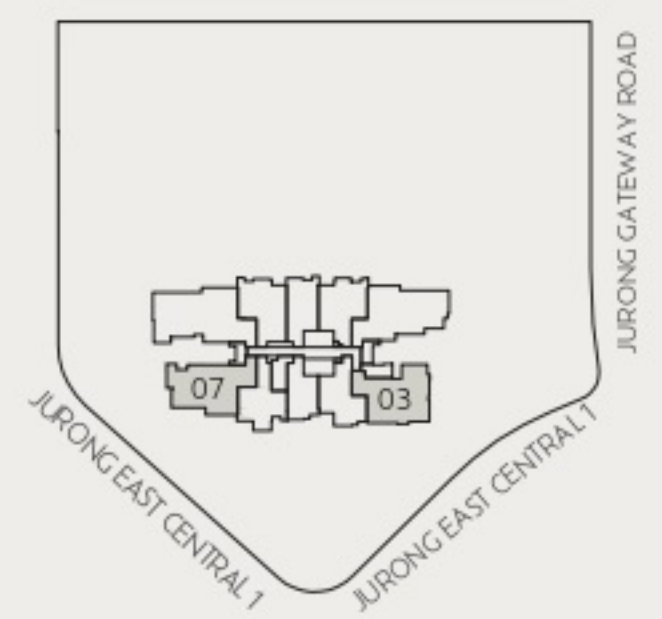
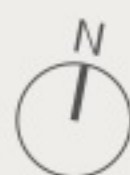
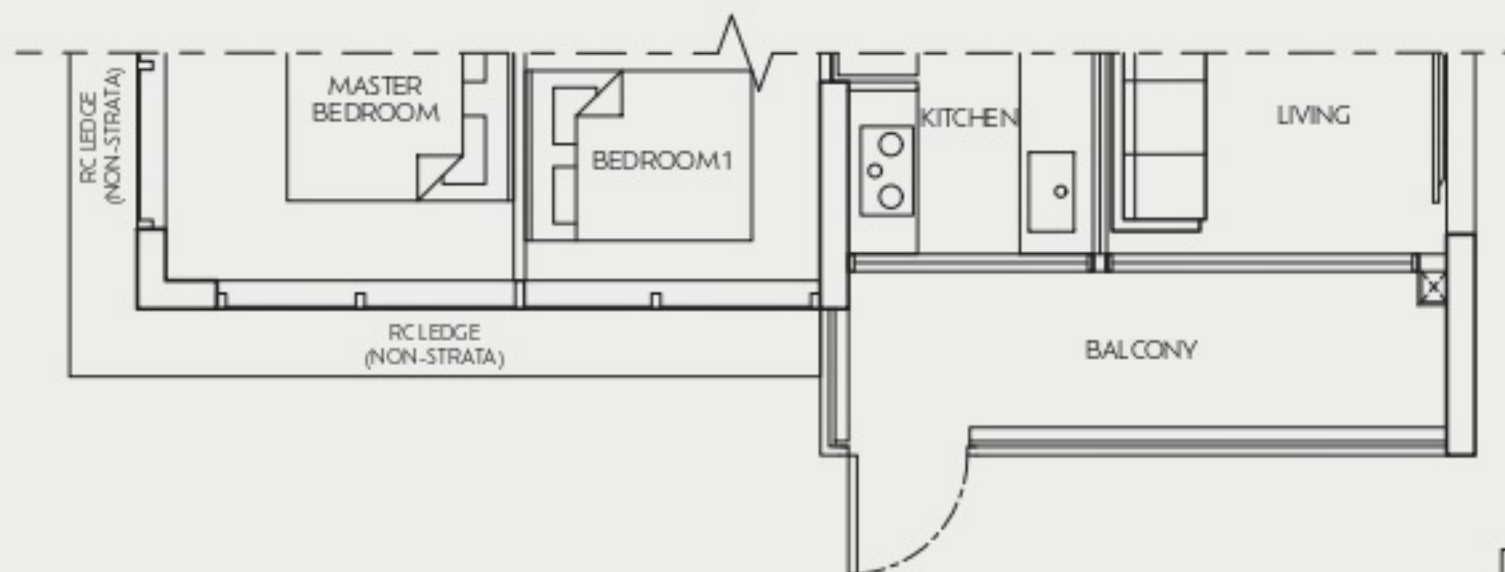
TYPE C2

110 sq m / 1,184 sq ft
 #04-07 to #23-07
 #25-07 to #40-07



TYPE C2(g)

110 sq m / 1,184 sq ft
 #03-07



KEY PLAN NOT TO SCALE

Area includes air-con (AC) ledge, balcony and strata void where applicable. Please refer to the key plan for orientation. The plans are subjected to change as may be approved by relevant authorities. All floor plans are approximate measurements only and are subjected to government re-survey. The balcony shall not be enclosed unless with the approved balcony screen. For an illustration of the approved balcony screen, please refer to the diagram annexed hereto as "Annexure A". The installation and cost of the balcony screen shall be borne by purchaser.

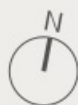
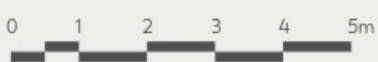
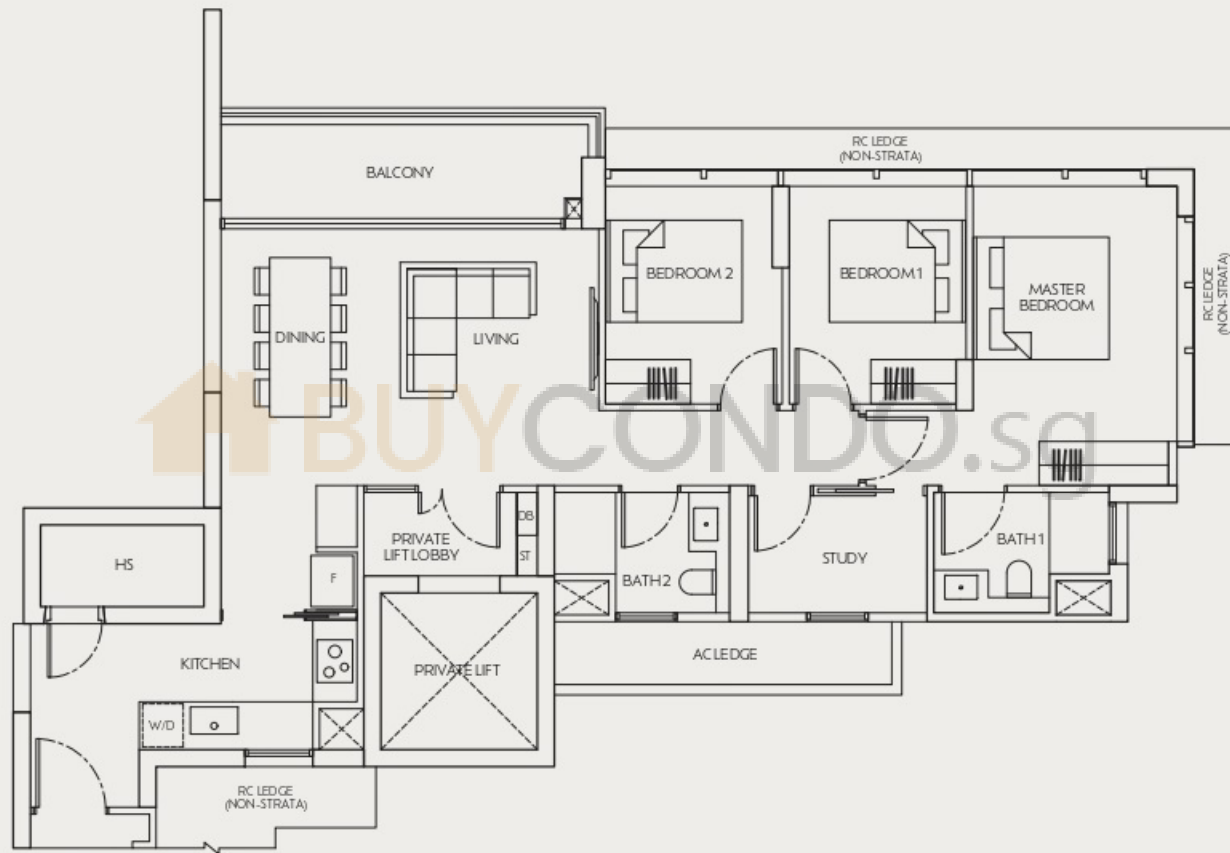
3-BEDROOM + STUDY (PREMIUM)

TYPE C(p)

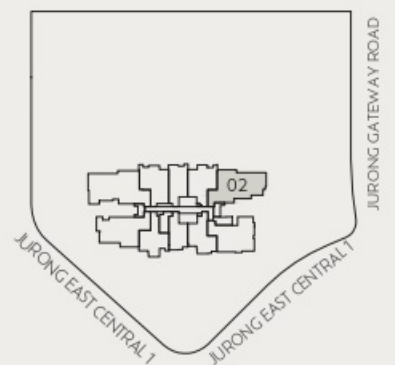
117 sq m / 1,259 sq ft

#04-02 to #23-02

#25-02 to #40-02



Area includes air-con (AC) ledge, balcony and strata void where applicable. Please refer to the key plan for orientation. The plans are subjected to change as may be approved by relevant authorities. All floor plans are approximate measurements only and are subjected to government re-survey. The balcony shall not be enclosed unless with the approved balcony screen. For an illustration of the approved balcony screen, please refer to the diagram annexed hereto as "Annexure A". The installation and cost of the balcony screen shall be borne by purchaser.



KEY PLAN NOT TO SCALE

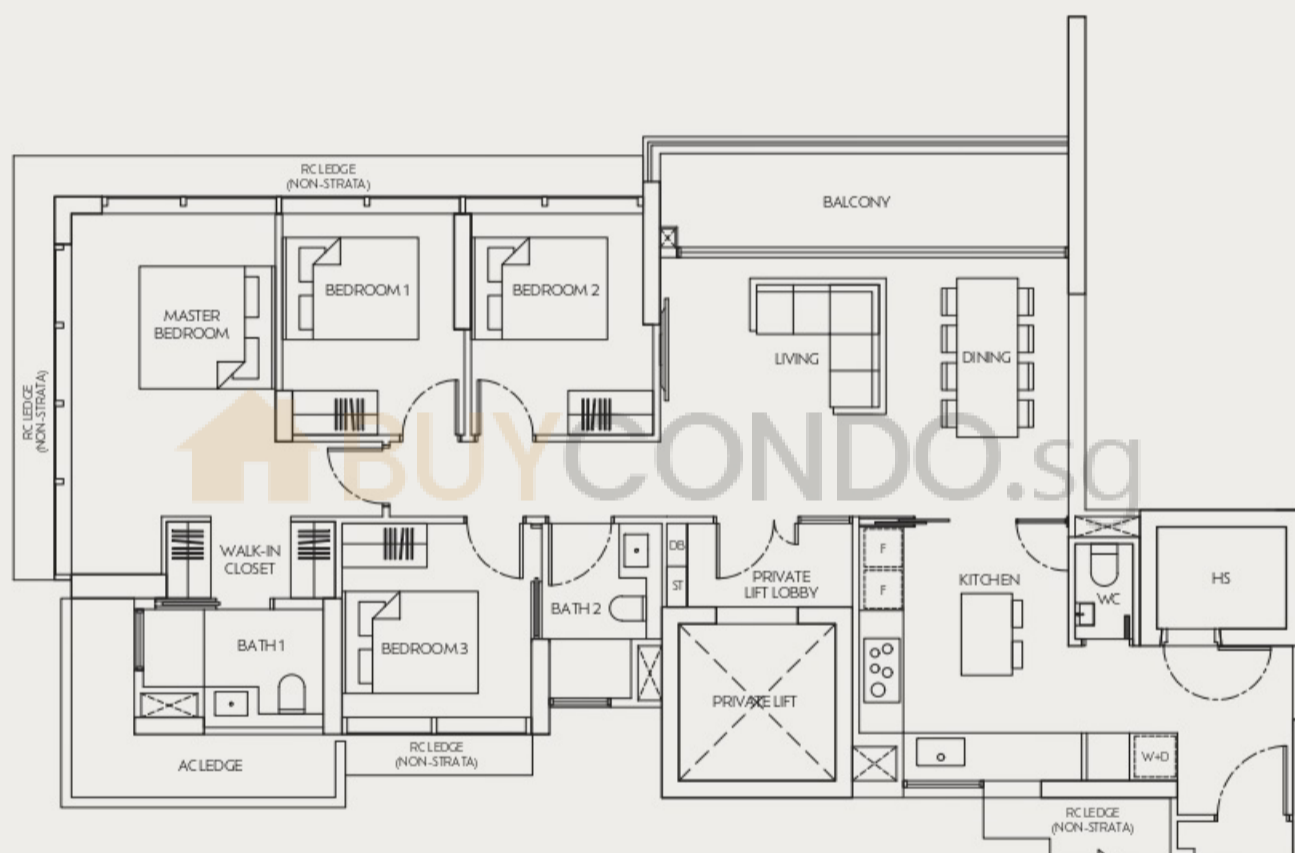
4-BEDROOM (PREMIUM)

TYPE D(p)

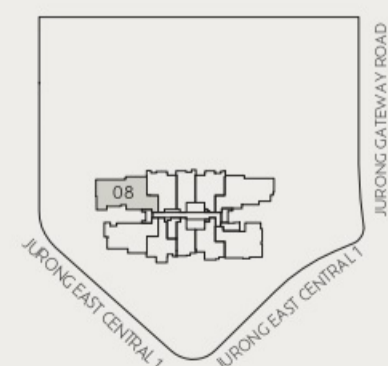
138 sq m / 1,485 sq ft

#03-08 to #23-08

#25-08 to #40-08



Area includes air-con (AC) ledge, balcony and strata void where applicable. Please refer to the key plan for orientation. The plans are subjected to change as may be approved by relevant authorities. All floor plans are approximate measurements only and are subjected to government re-survey. The balcony shall not be enclosed unless with the approved balcony screen. For an illustration of the approved balcony screen, please refer to the diagram annexed hereto as "Annexure A". The installation and cost of the balcony screen shall be borne by purchaser.



KEY PLAN NOT TO SCALE