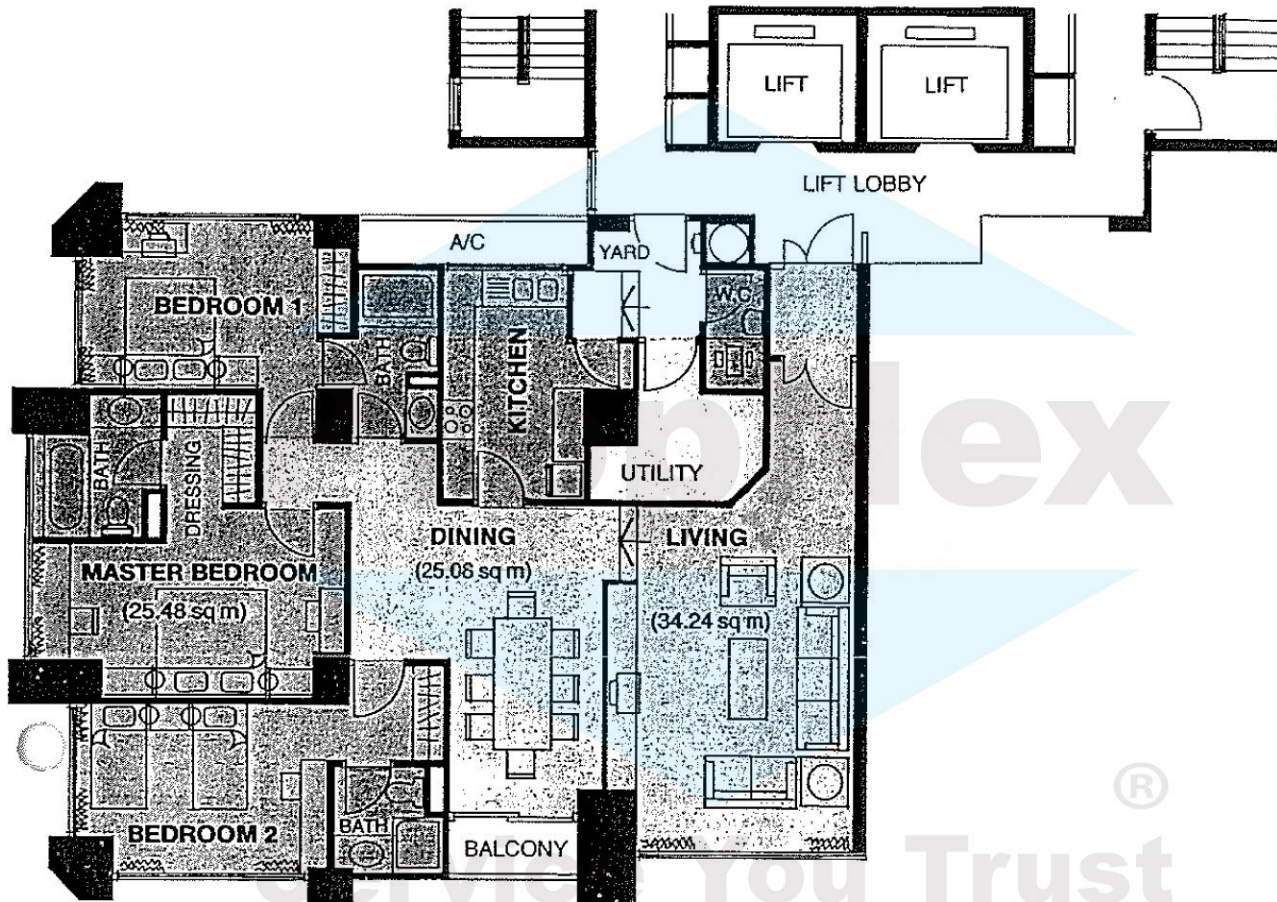
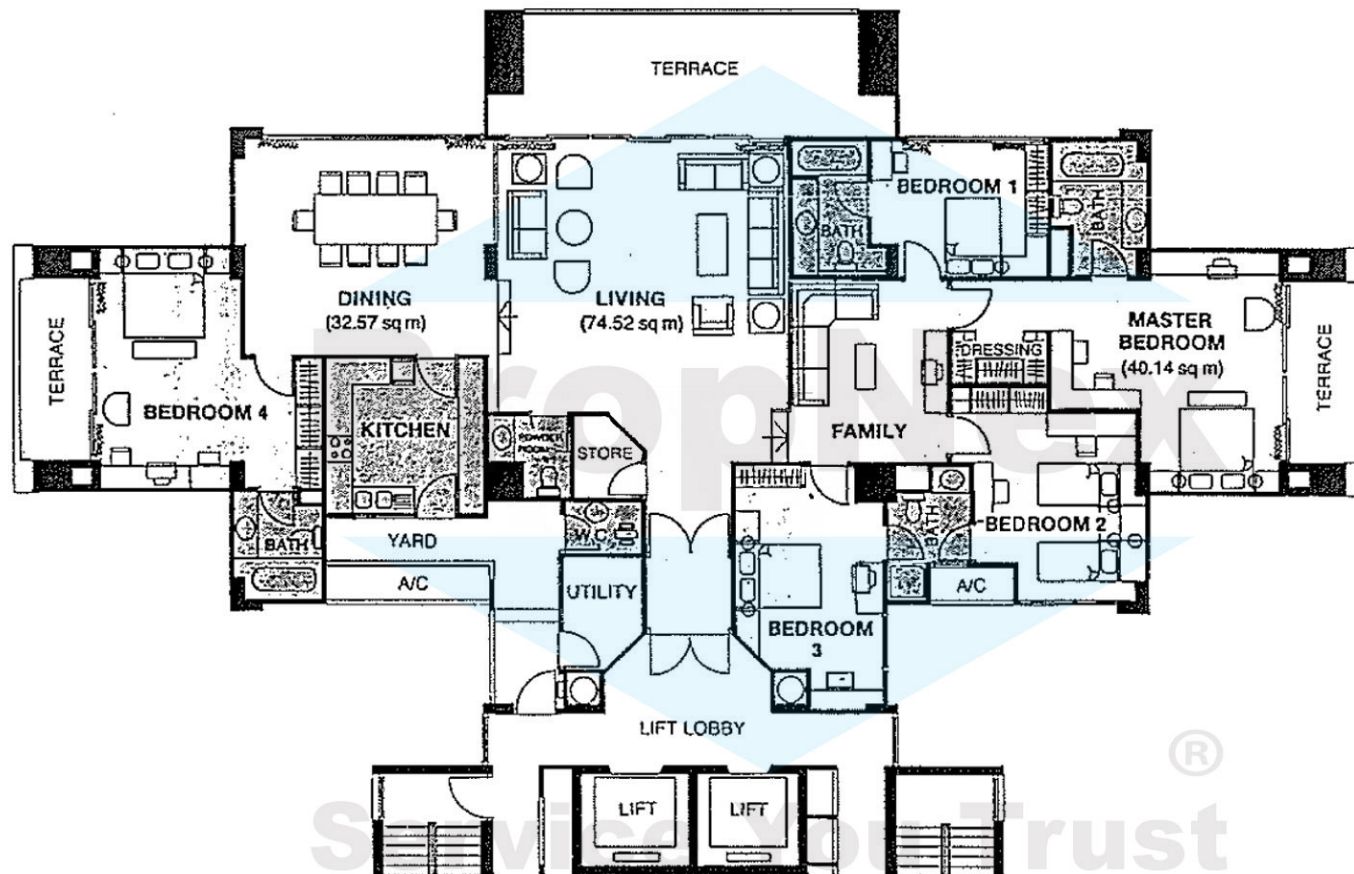


TYPE A1/A2 APARTMENT (236 SQM)

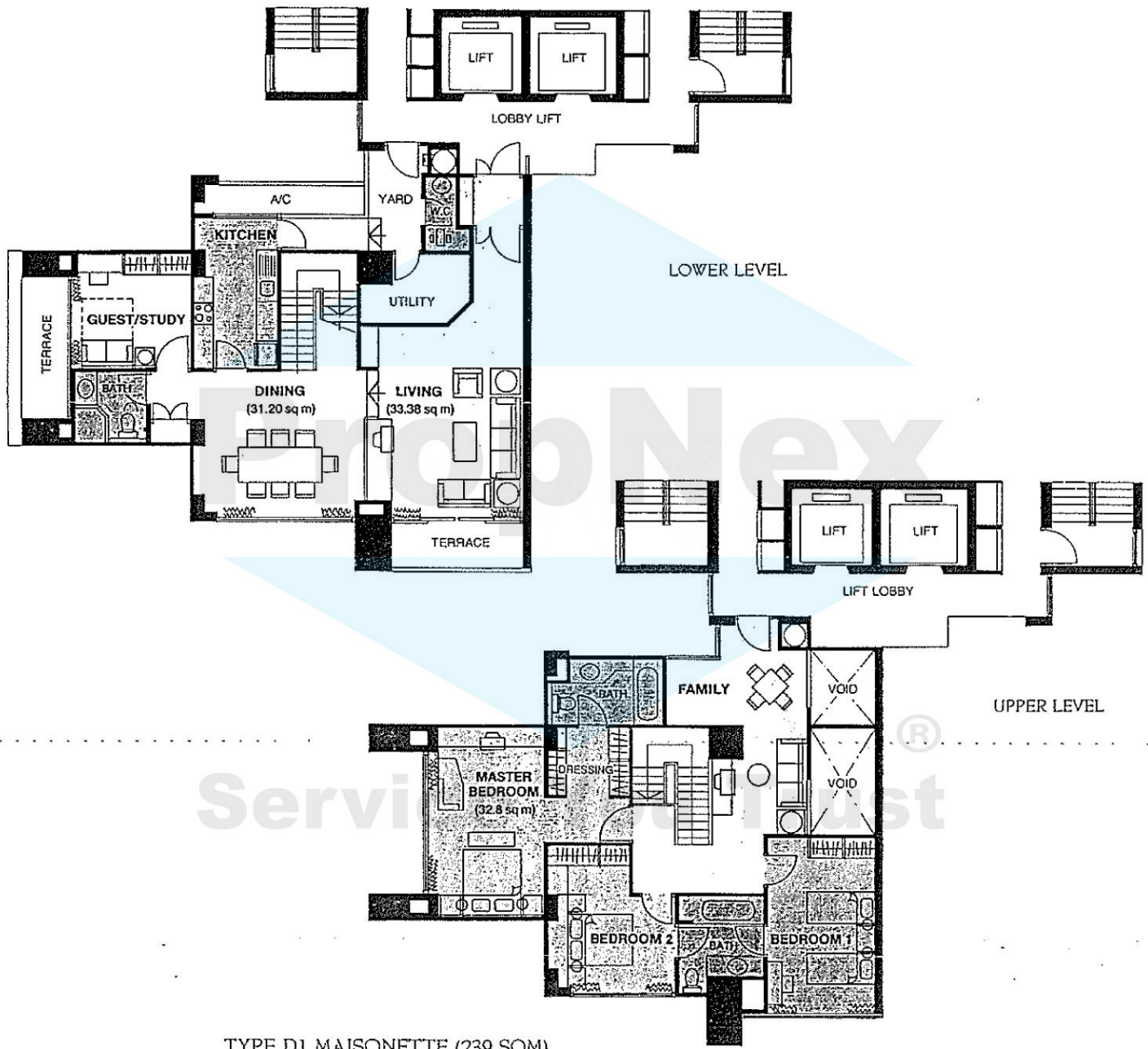


TYPE B1/B2 APARTMENT (161 SQM)



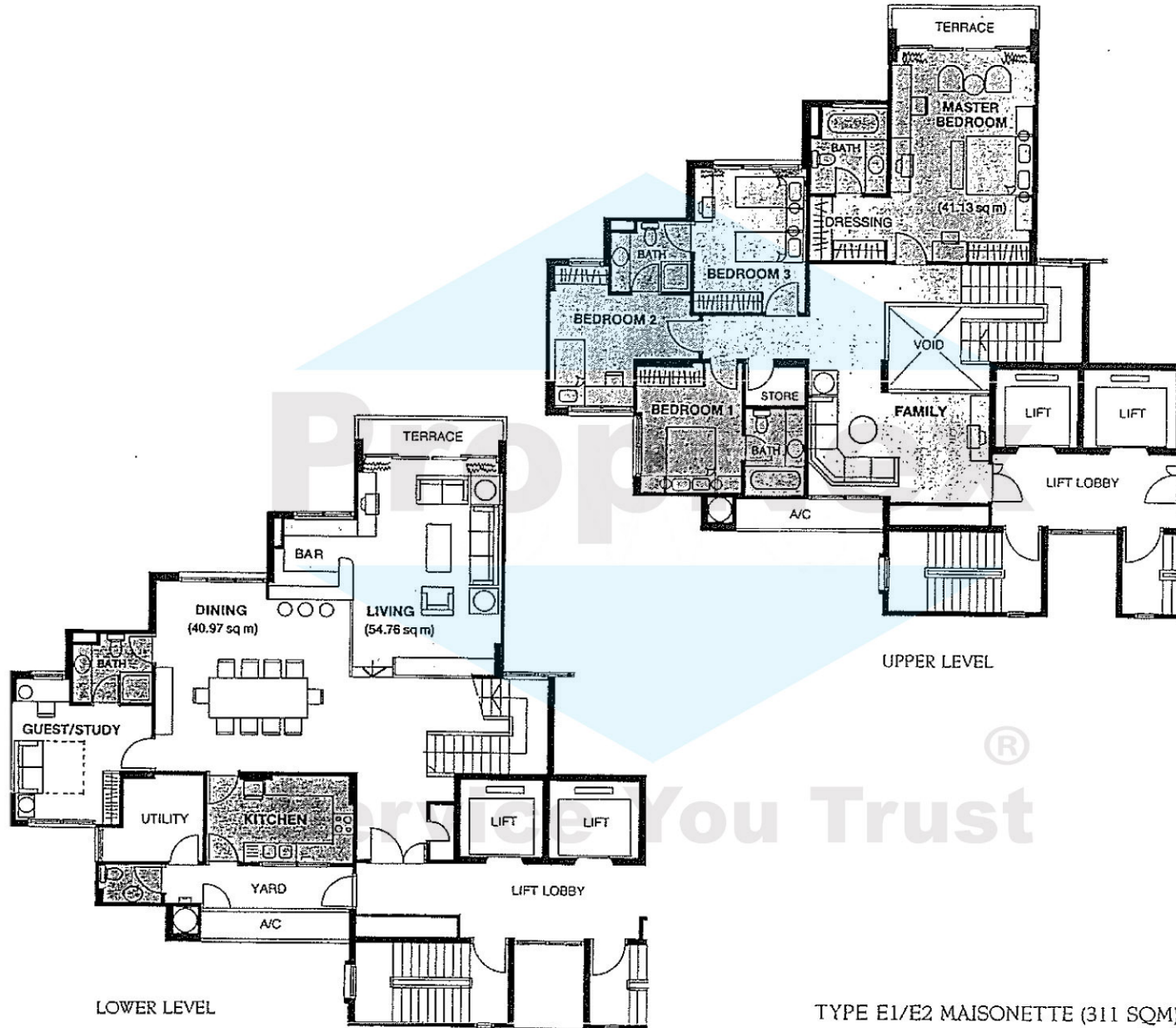
TYPE C1a APARTMENT (336 SQM)

- Areas subject to final survey
- Not to scale



TYPE D1 MAISONETTE (239 SQM)

- Areas subject to final survey
- Not to scale



TYPE E1/E2 MAISONETTE (311 SQM)