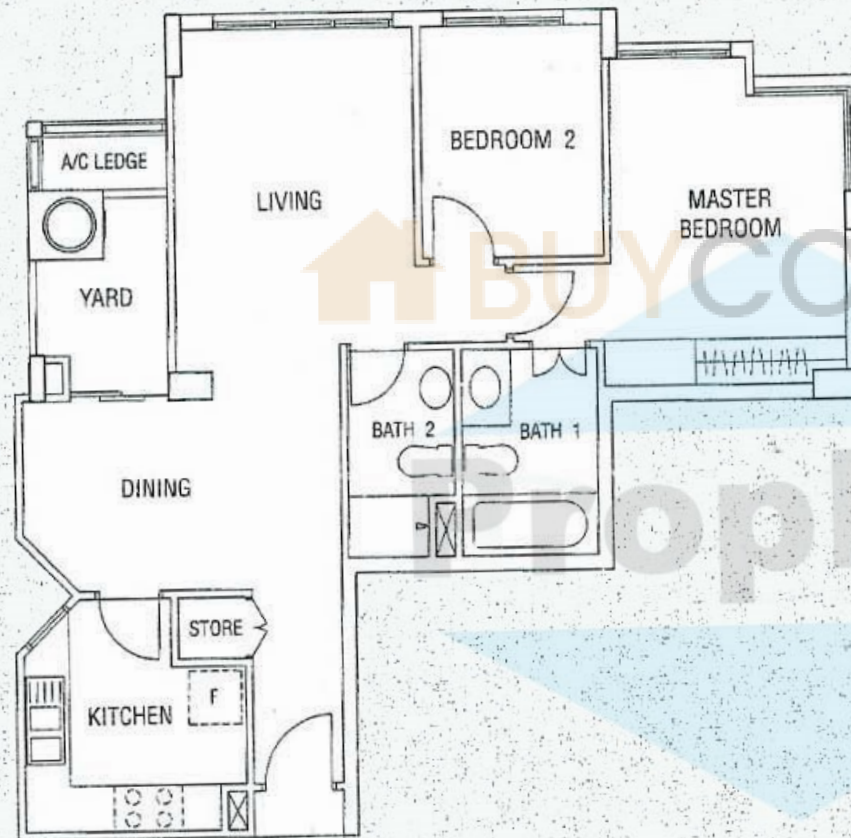
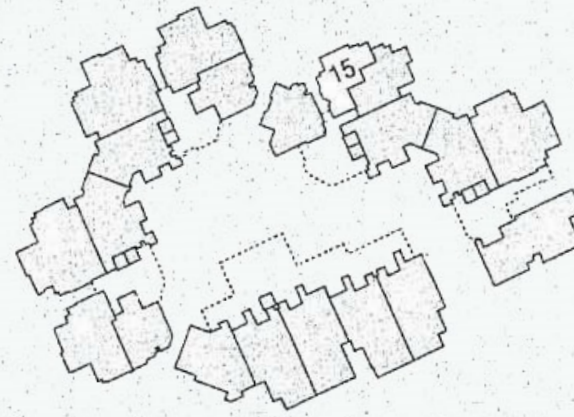


MAPLEWOODS

FELICIUM COURT

TYPE
B1



AREA :

TYPE B1

LIVING/DINING	— 27.91 SQ. M.
KITCHEN	— 7.61 SQ. M.
MASTER BEDROOM	— 13.82 SQ. M.
BEDROOM 2	— 7.20 SQ. M.

MAPLEWOODS

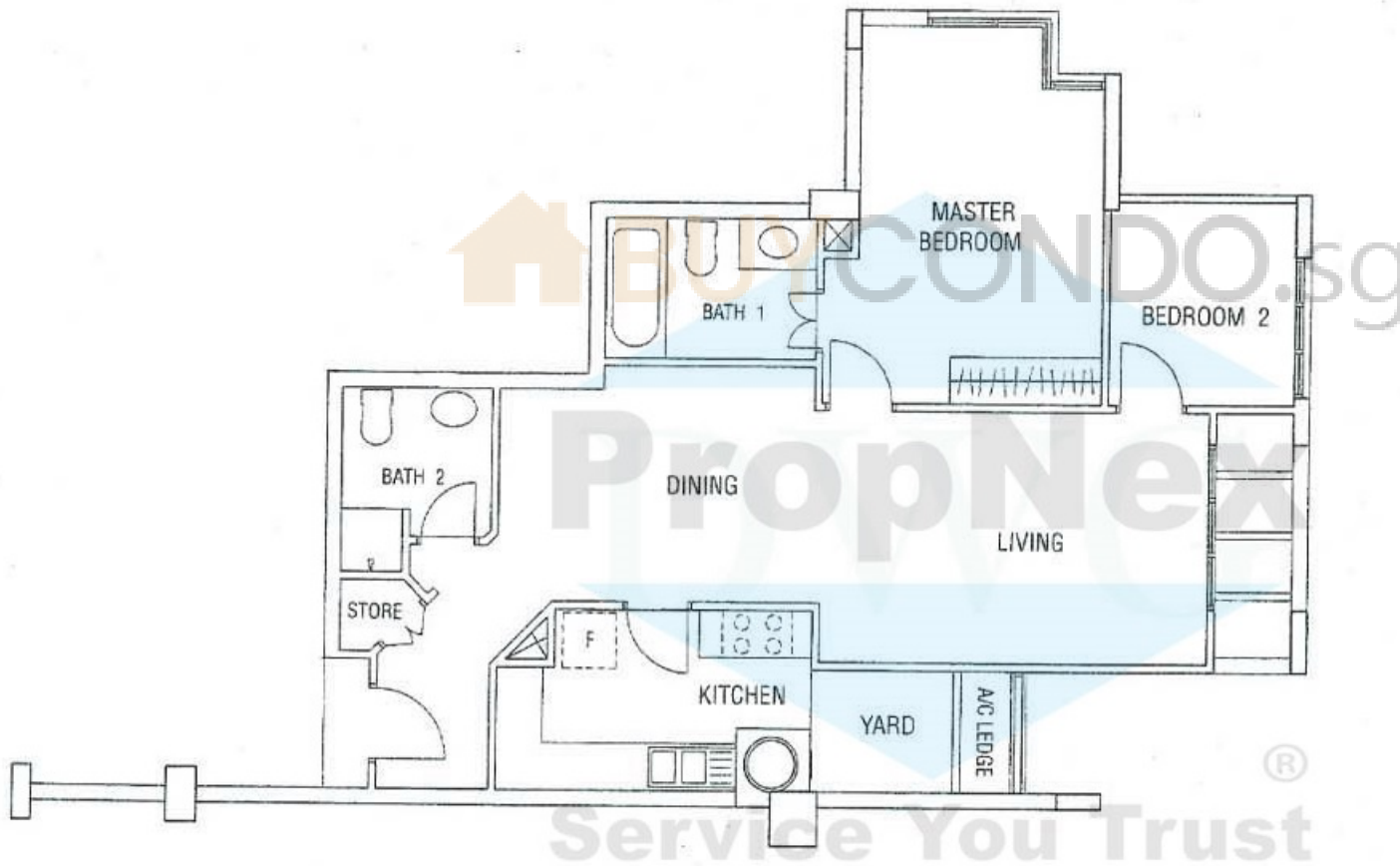
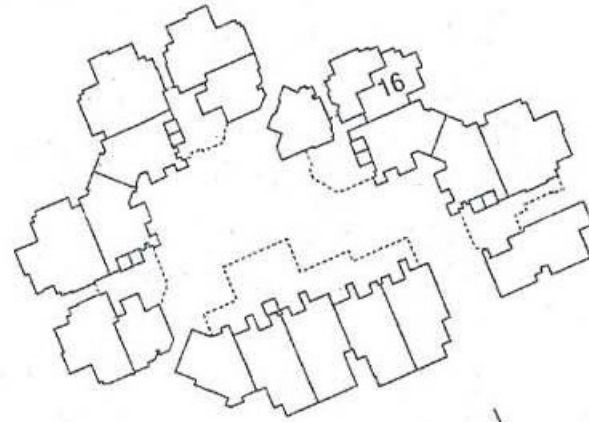
FELICIUM COURT

TYPE
B2

AREA :

TYPE B2

LIVING/DINING	— 32.23 SQ. M.
KITCHEN	— 8.11 SQ. M.
MASTER BEDROOM	— 15.67 SQ. M.
BEDROOM 2	— 6.23 SQ. M.

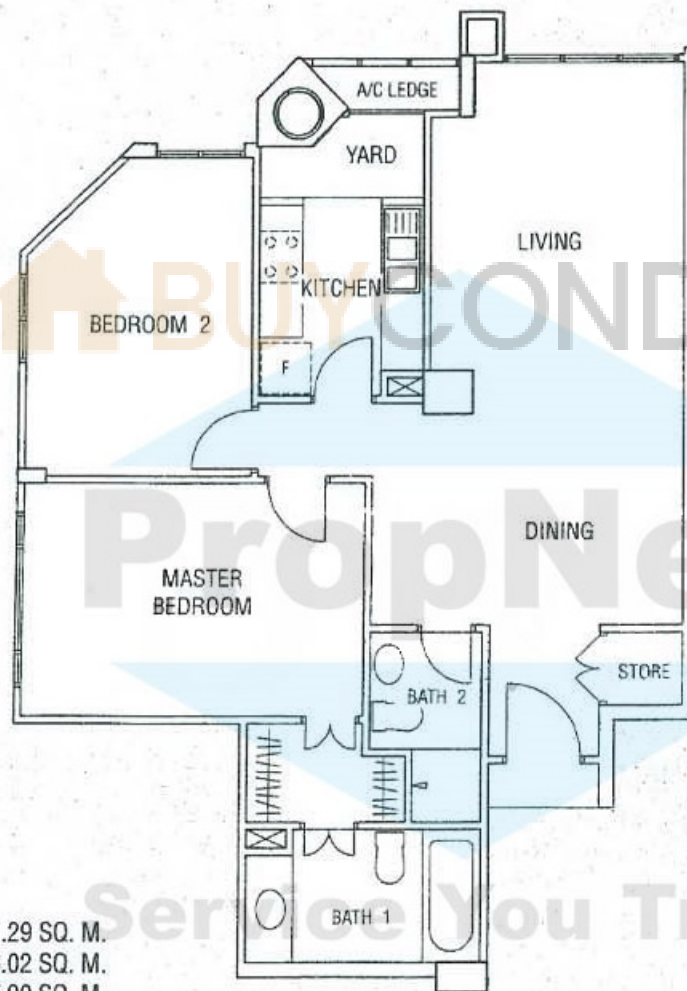
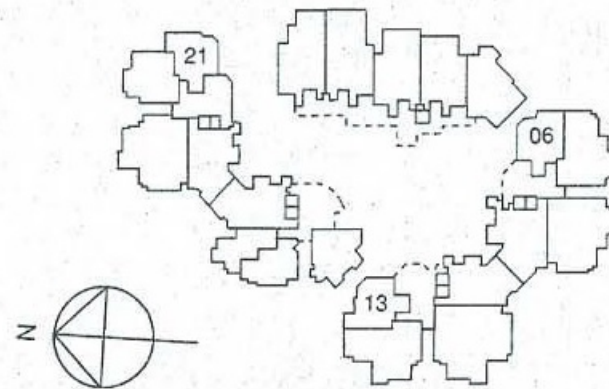


While every reasonable care has been taken in preparing this document, the developer cannot be held responsible for any inaccuracy. Plans are subject to any amendment approved by the building authorities. Floor areas are approximate and subject to final survey.

MAPLEWOODS

CHEMPAKA COURT

TYPE
B3



AREA :

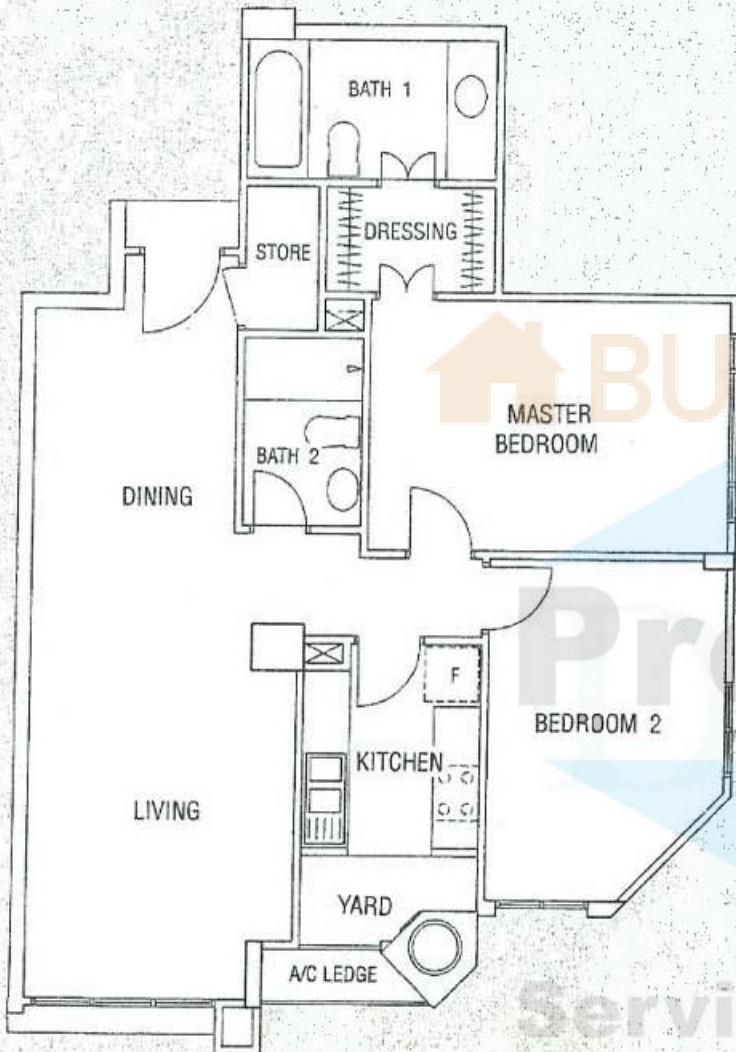
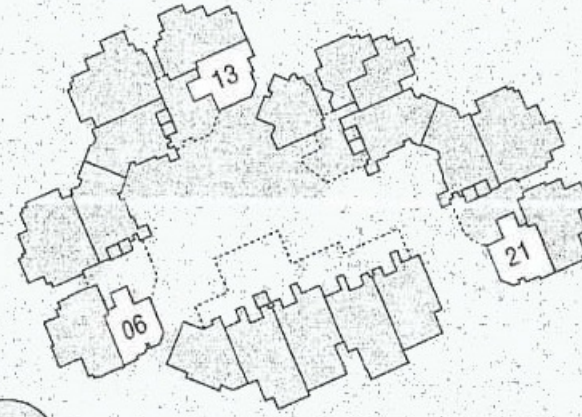
TYPE B3

LIVING/DINING	— 31.29 SQ. M.
KITCHEN	— 6.02 SQ. M.
MASTER BEDROOM	— 17.90 SQ. M.
BEDROOM 2	— 12.52 SQ. M.

MAPLEWOODS

FELICIUM COURT

TYPE
B3



AREA :

TYPE B3

LIVING/DINING	— 31.29 SQ. M.
KITCHEN	— 6.02 SQ. M.
MASTER BEDROOM	— 17.90 SQ. M.
BEDROOM 2	— 12.52 SQ. M.





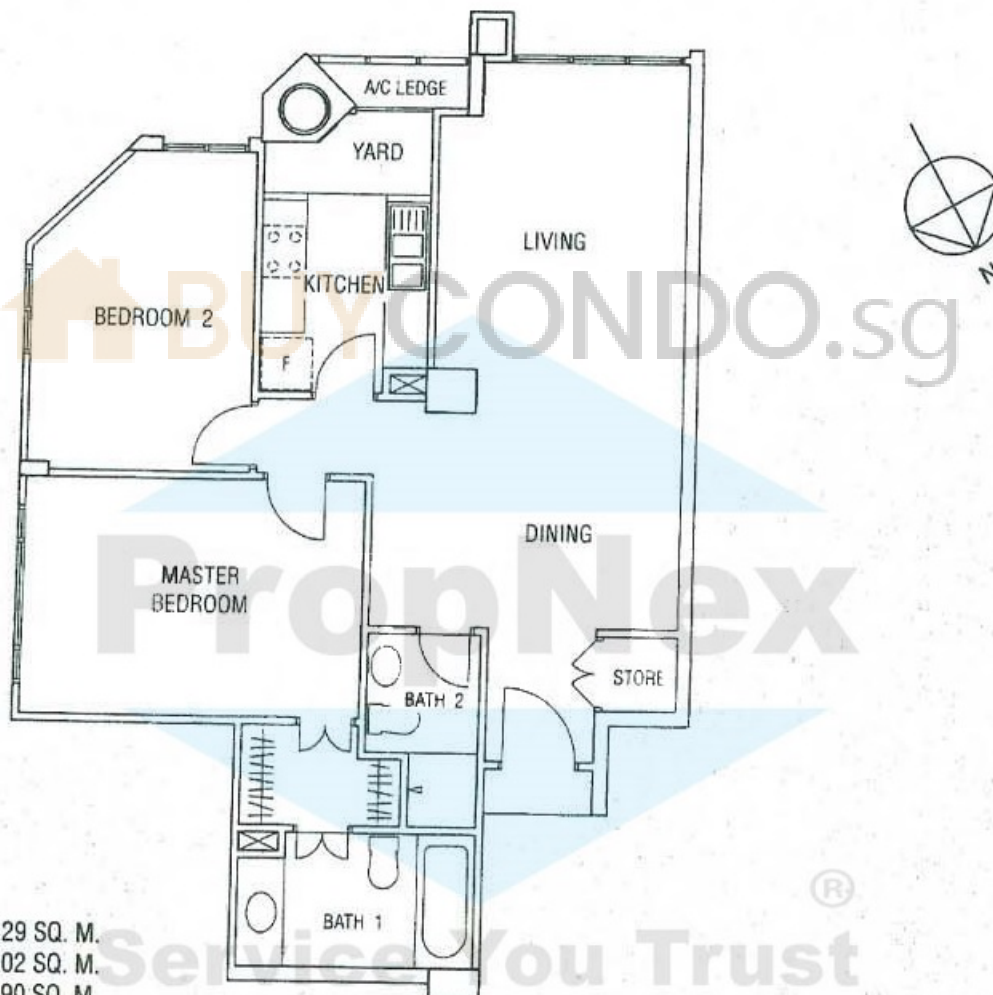
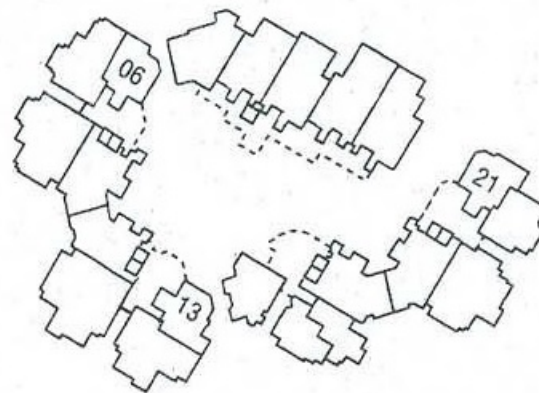


While every reasonable care has been taken in preparing this document, the developer cannot be held responsible for any inaccuracy. Plans are subject to any amendment approved by the building authorities. Floor areas are approximate and subject to final survey.

MAPLEWOODS

BAUHINIA COURT

TYPE
B3



AREA :

TYPE B3

LIVING/DINING	— 31.29 SQ. M.
KITCHEN	— 6.02 SQ. M.
MASTER BEDROOM	— 17.90 SQ. M.
BEDROOM 2	— 12.52 SQ. M.

MAPLEWOODS

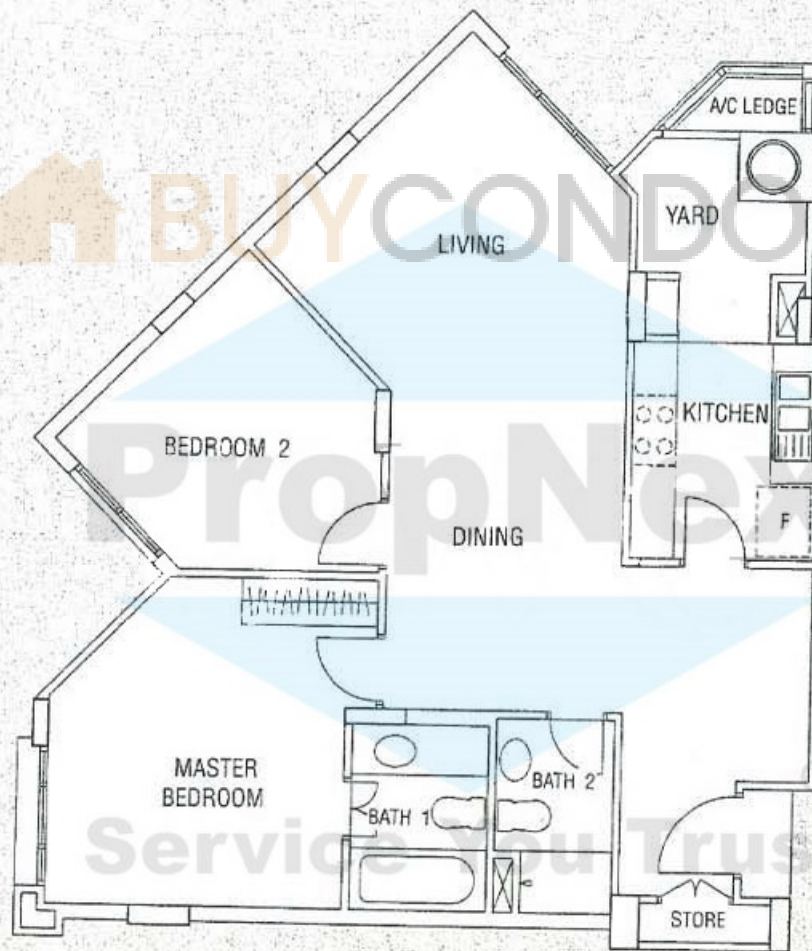
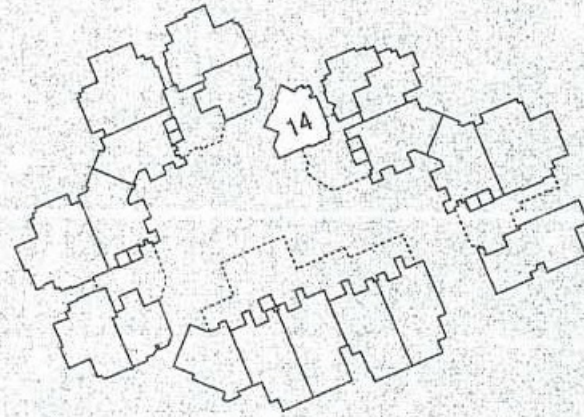
FELICIUM COURT

TYPE
B5

AREA :

TYPE B5

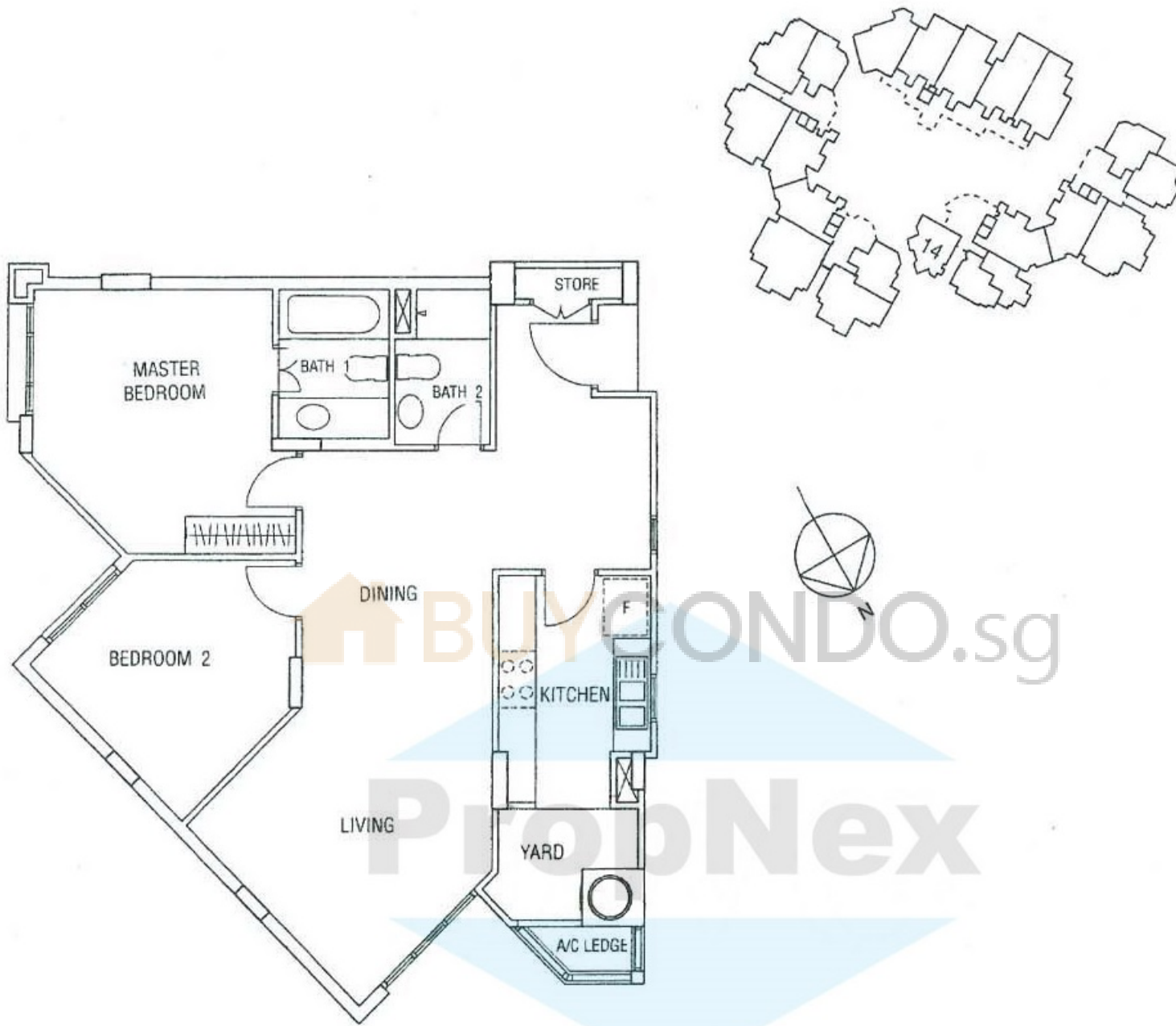
LIVING/DINING	— 37.23 SQ. M.
KITCHEN	— 8.29 SQ. M.
MASTER BEDROOM	— 16.02 SQ. M.
BEDROOM 2	— 11.60 SQ. M.



MAPLEWOODS

TYPE
B5

BAUHINIA COURT



AREA :

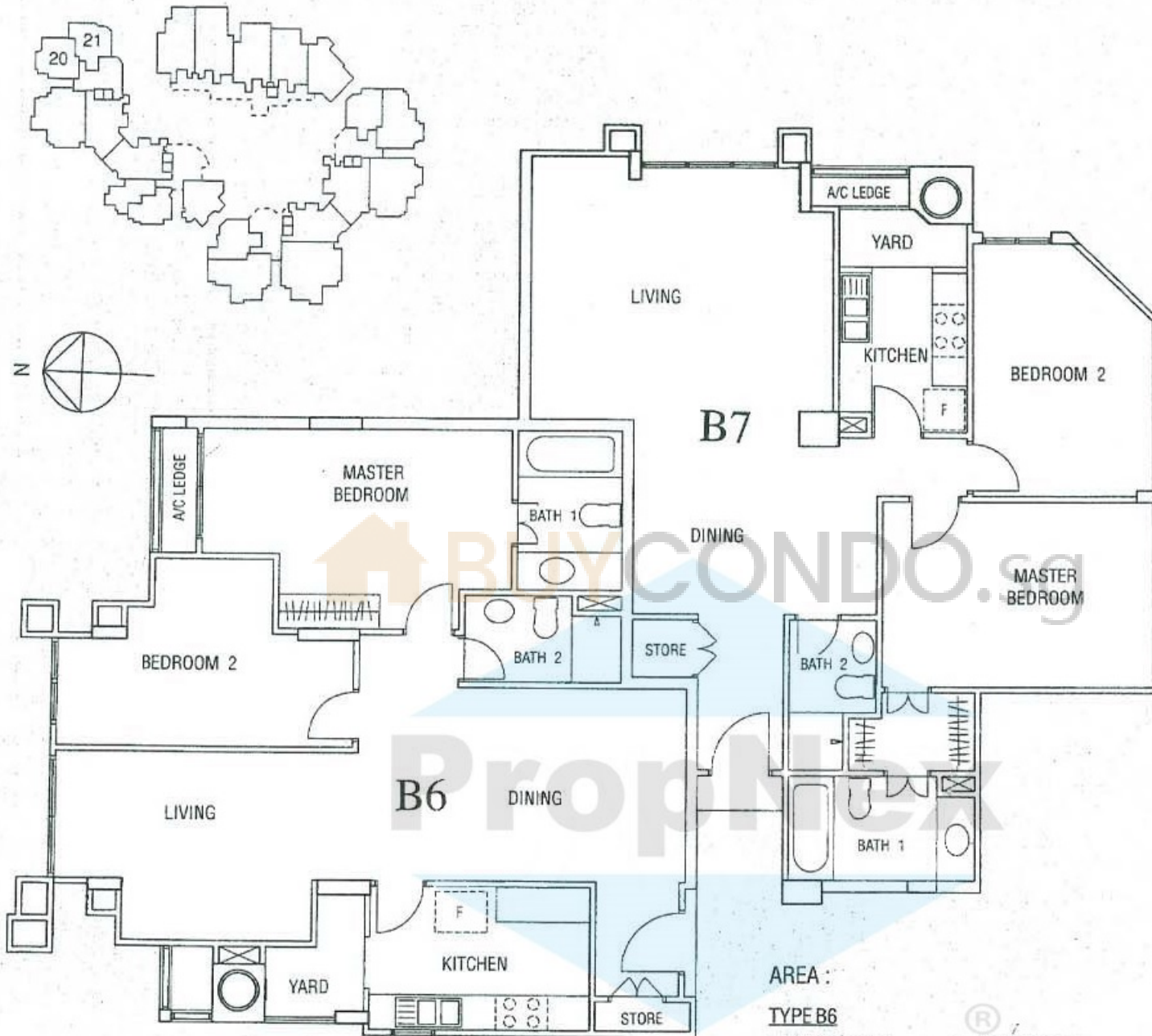
TYPE B5

LIVING/DINING	— 37.23 SQ. M.
KITCHEN	— 8.29 SQ. M.
MASTER BEDROOM	— 16.02 SQ. M.
BEDROOM 2	— 11.60 SQ. M.

MAPLEWOODS

CHEMPAKA COURT

TYPE
B6
B7



AREA :

TYPE B6

LIVING/DINING	— 37.01 SQ. M.
KITCHEN	— 9.32 SQ. M.
MASTER BEDROOM	— 16.41 SQ. M.
BEDROOM 2	— 12.79 SQ. M.

TYPE B7

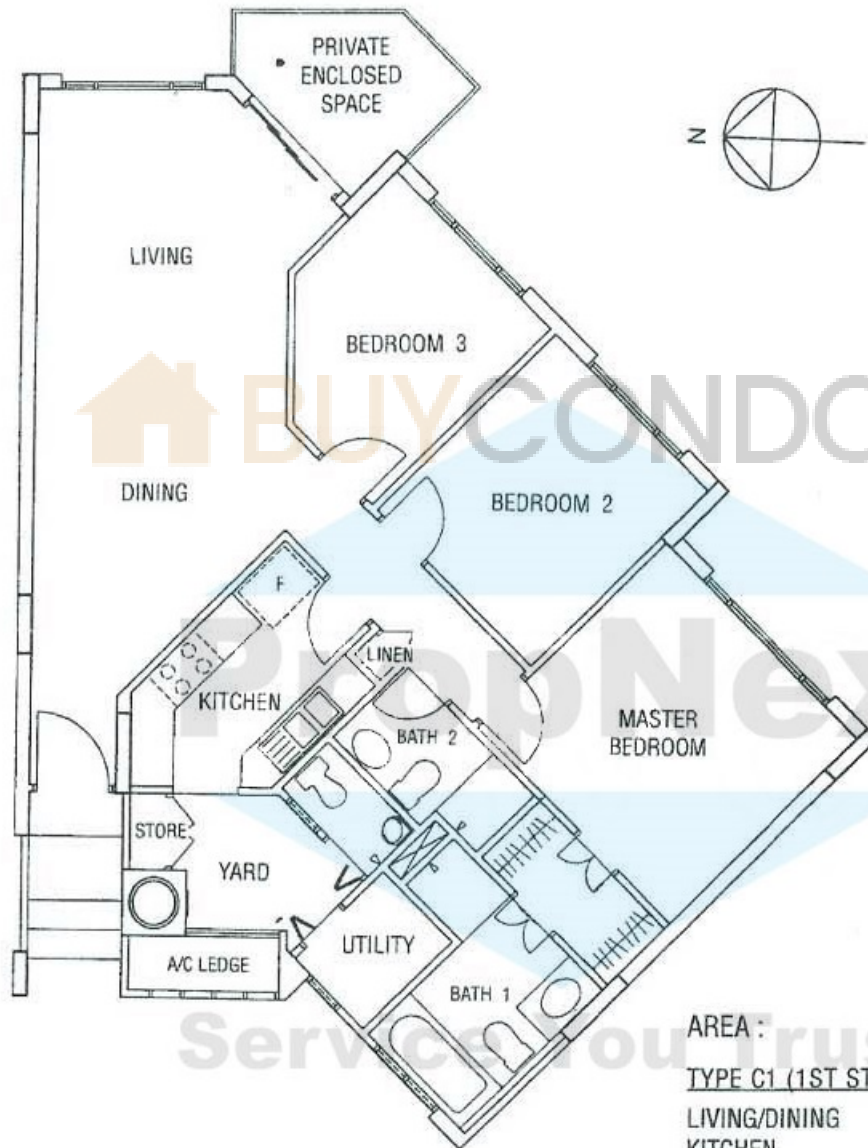
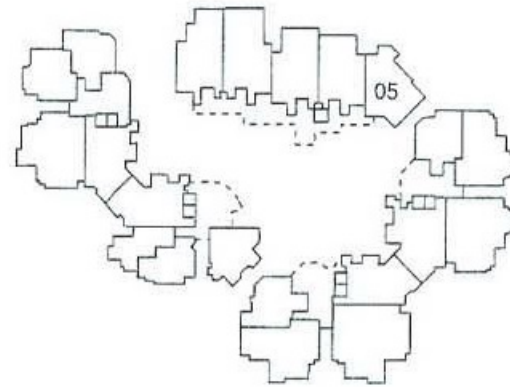
LIVING/DINING	— 40.77 SQ. M.
KITCHEN	— 6.20 SQ. M.
MASTER BEDROOM	— 17.90 SQ. M.
BEDROOM 2	— 12.74 SQ. M.

While every reasonable care has been taken in preparing this document, the developer cannot be held responsible for any inaccuracy. Plans are subject to any amendment approved by the building authorities. Floor areas are approximate and subject to final survey.

MAPLEWOODS

CHEMPAKA COURT

TYPE
C1



AREA :

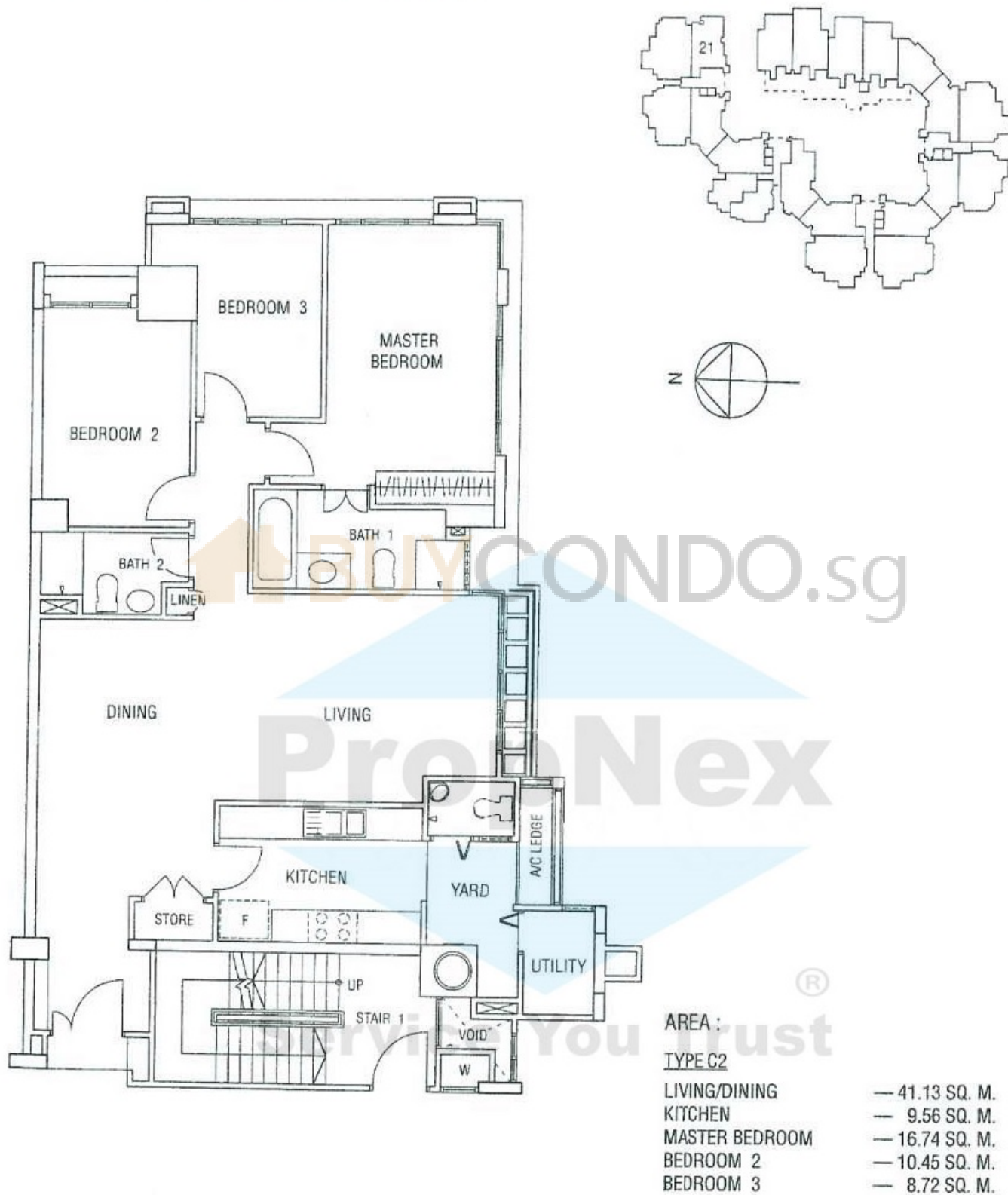
TYPE C1 (1ST STOREY, W/P.E.S.)

LIVING/DINING	— 28.56 SQ. M.
KITCHEN	— 7.27 SQ. M.
MASTER BEDROOM	— 16.44 SQ. M.
BEDROOM 2	— 10.19 SQ. M.
BEDROOM 3	— 9.18 SQ. M.
PRIVATE ENCLOSED SPACE	— 5.53 SQ. M.

MAPLEWOODS

CHEMPAKA COURT

TYPE
C2



While every reasonable care has been taken in preparing this document, the developer cannot be held responsible for any inaccuracy. Plans are subject to any amendment approved by the building authorities. Floor areas are approximate and subject to final survey.

MAPLEWOODS

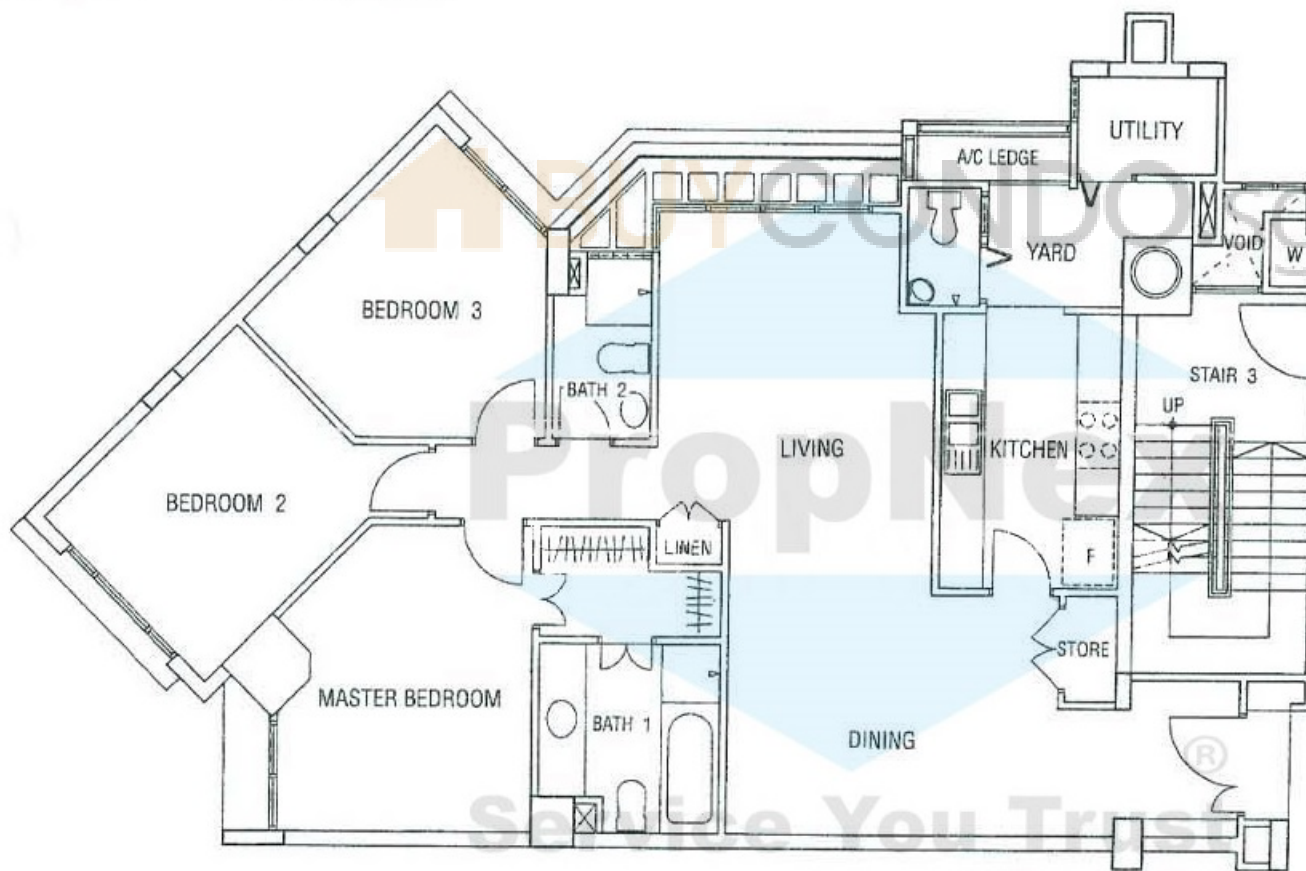
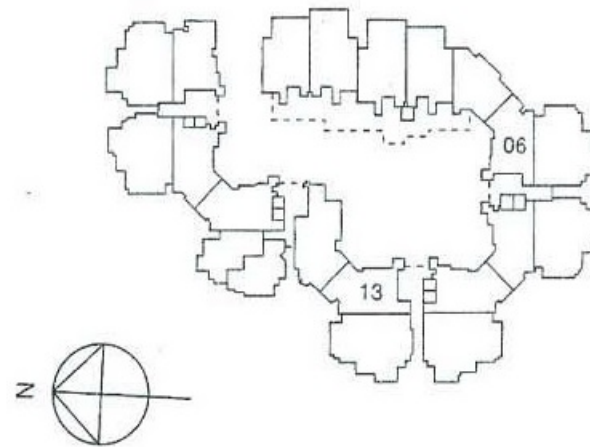
CHEMPAKA COURT

TYPE
C3

AREA :

TYPE C3

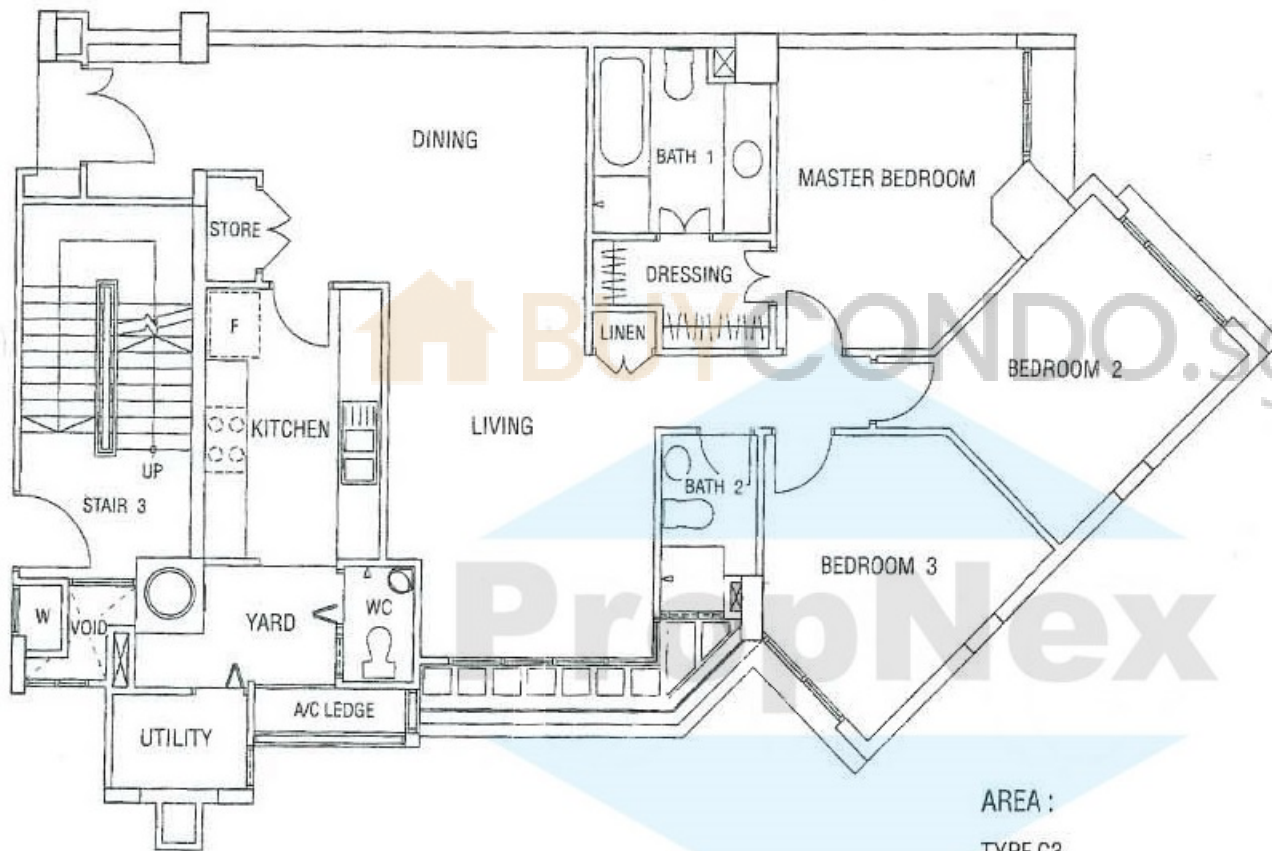
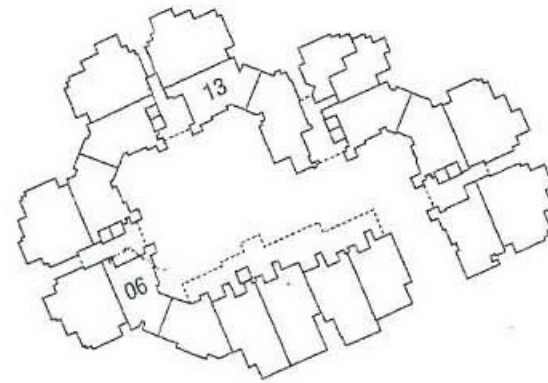
LIVING/DINING	— 38.15 SQ. M.
KITCHEN	— 9.56 SQ. M.
MASTER BEDROOM	— 16.85 SQ. M.
BEDROOM 2	— 12.49 SQ. M.
BEDROOM 3	— 11.76 SQ. M.



MAPLEWOODS

FELICIUM COURT

TYPE
C3



AREA :

TYPE C3

LIVING/DINING	— 38.15 SQ. M.
KITCHEN	— 9.56 SQ. M.
MASTER BEDROOM	— 16.85 SQ. M.
BEDROOM 2	— 12.49 SQ. M.
BEDROOM 3	— 11.76 SQ. M.

MAPLEWOODS

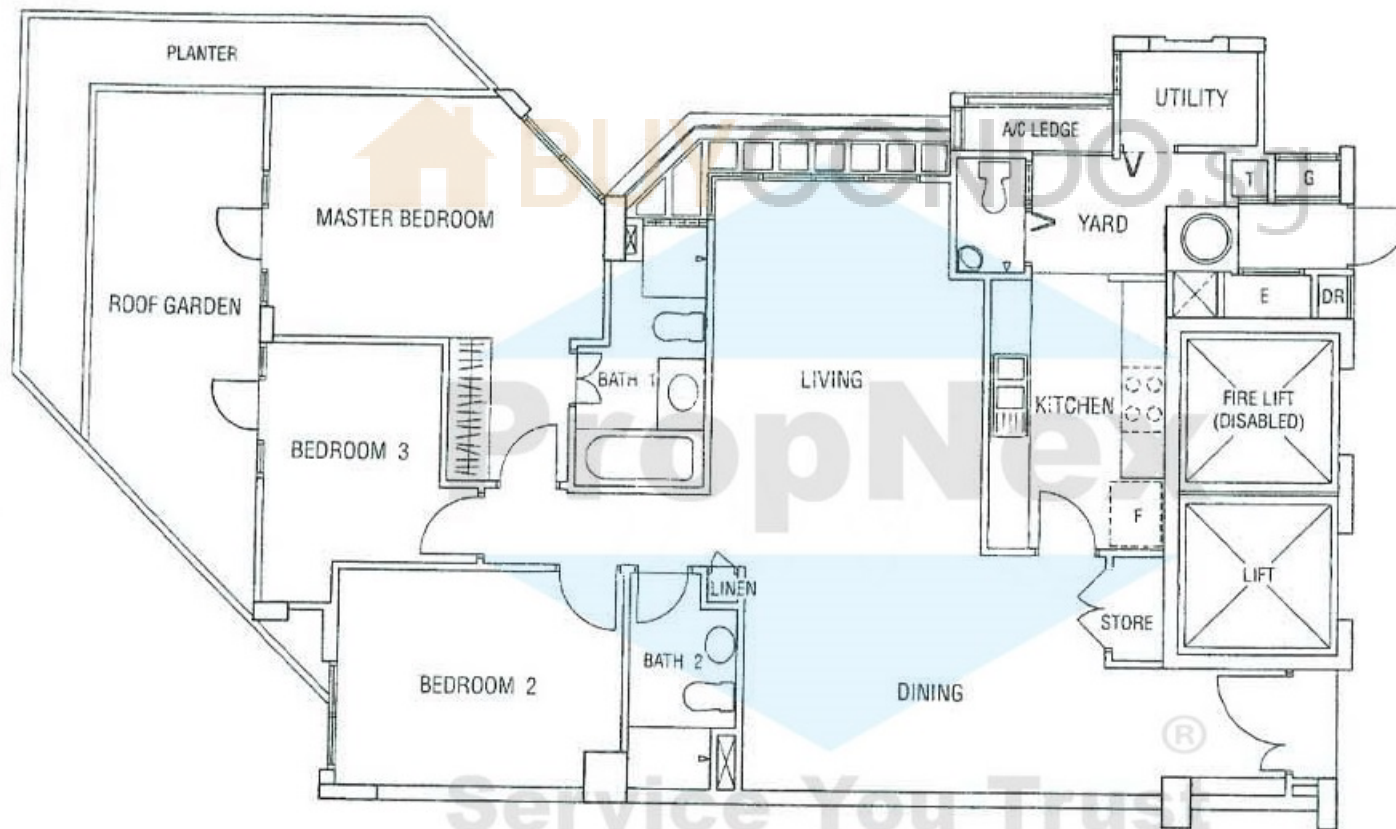
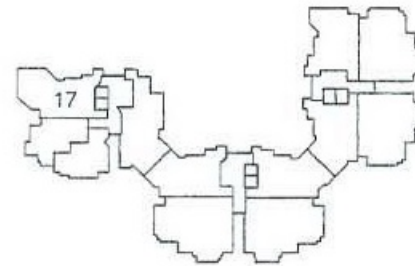
CHEMPAKA COURT

TYPE
C4

AREA :

TYPE C4/(W/ ROOF GARDEN)

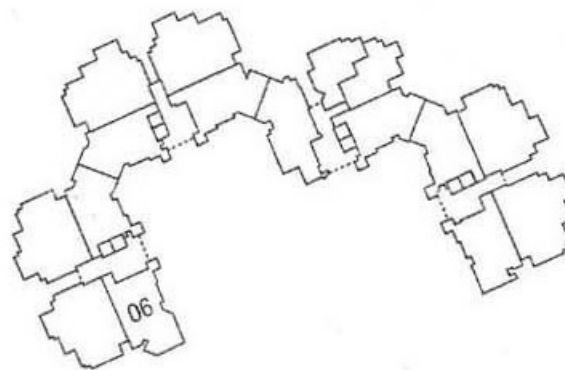
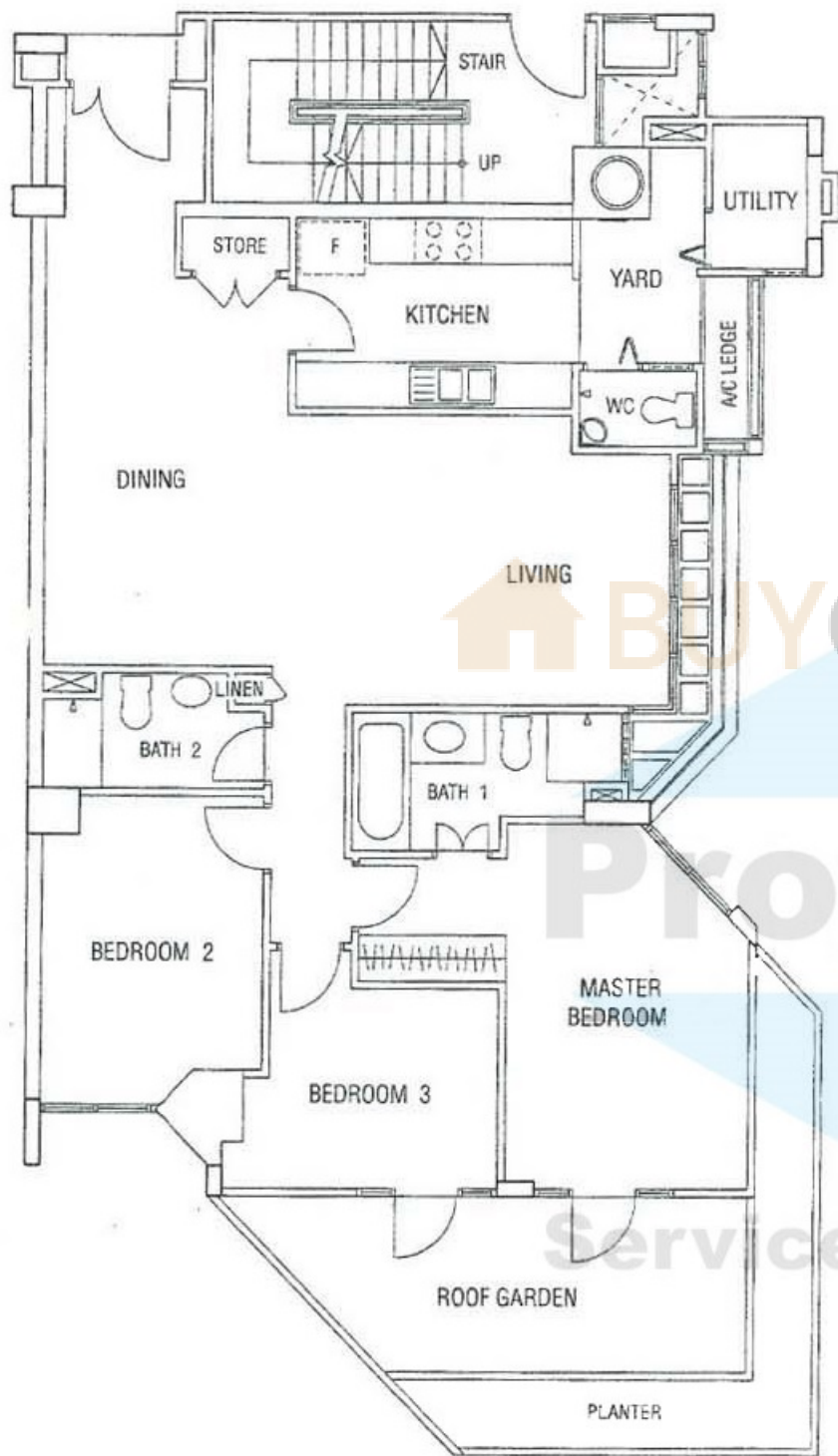
LIVING/DINING	— 40.39 SQ. M.
KITCHEN	— 9.56 SQ. M.
MASTER BEDROOM	— 18.22 SQ. M.
BEDROOM 2	— 11.82 SQ. M.
BEDROOM 3	— 8.73 SQ. M.
ROOF GARDEN	— 15.00 SQ. M.



MAPLEWOODS

TYPE
C5

FELICIUM COURT



AREA :

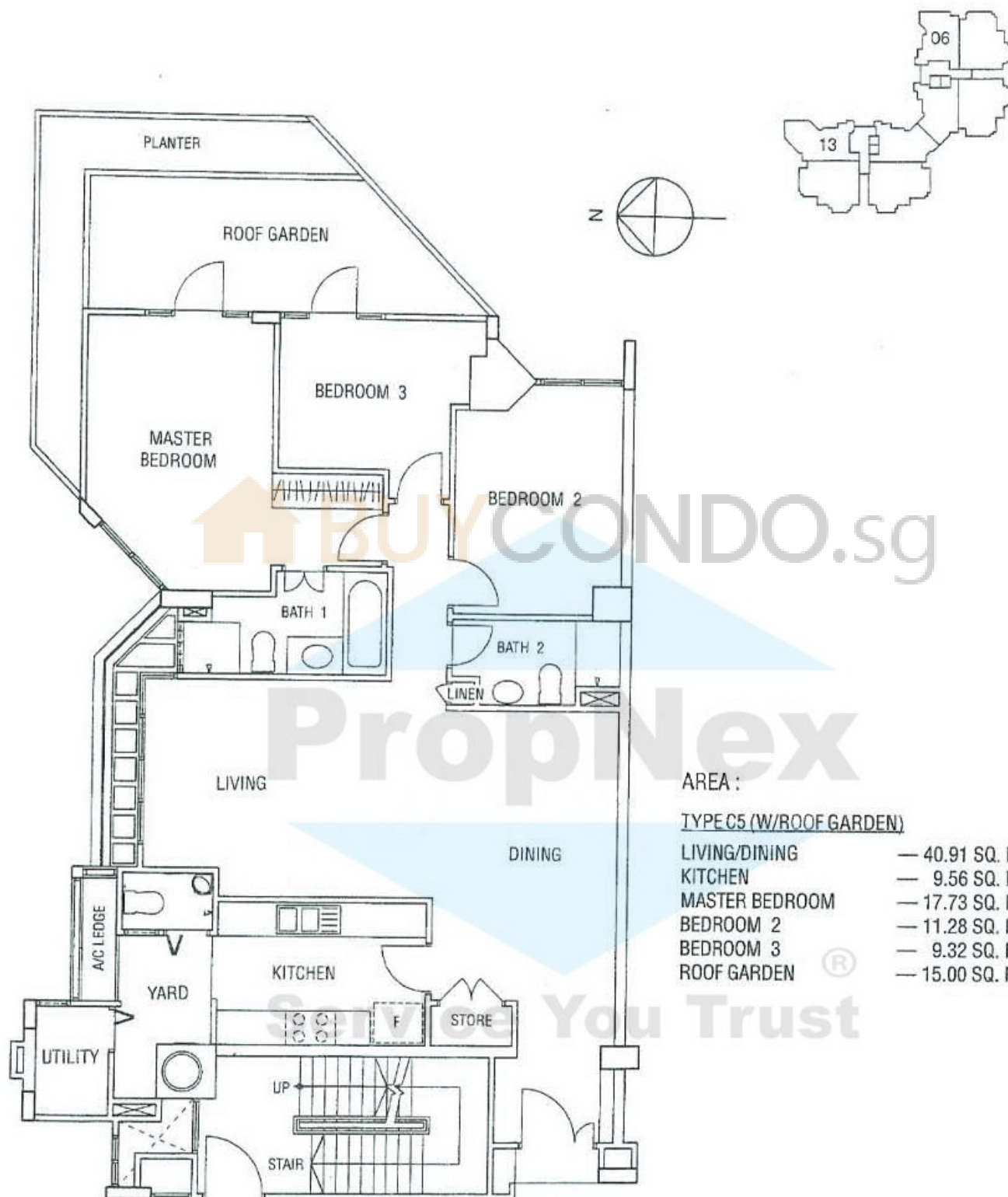
TYPE C5 (W/ROOF GARDEN)

LIVING/DINING	— 40.91 SQ. M.
KITCHEN	— 9.56 SQ. M.
MASTER BEDROOM	— 17.73 SQ. M.
BEDROOM 2	— 11.28 SQ. M.
BEDROOM 3	— 9.32 SQ. M.
ROOF GARDEN	— 15.00 SQ. M.

MAPLEWOODS

CHEMPAKA COURT

TYPE
C5



AREA :

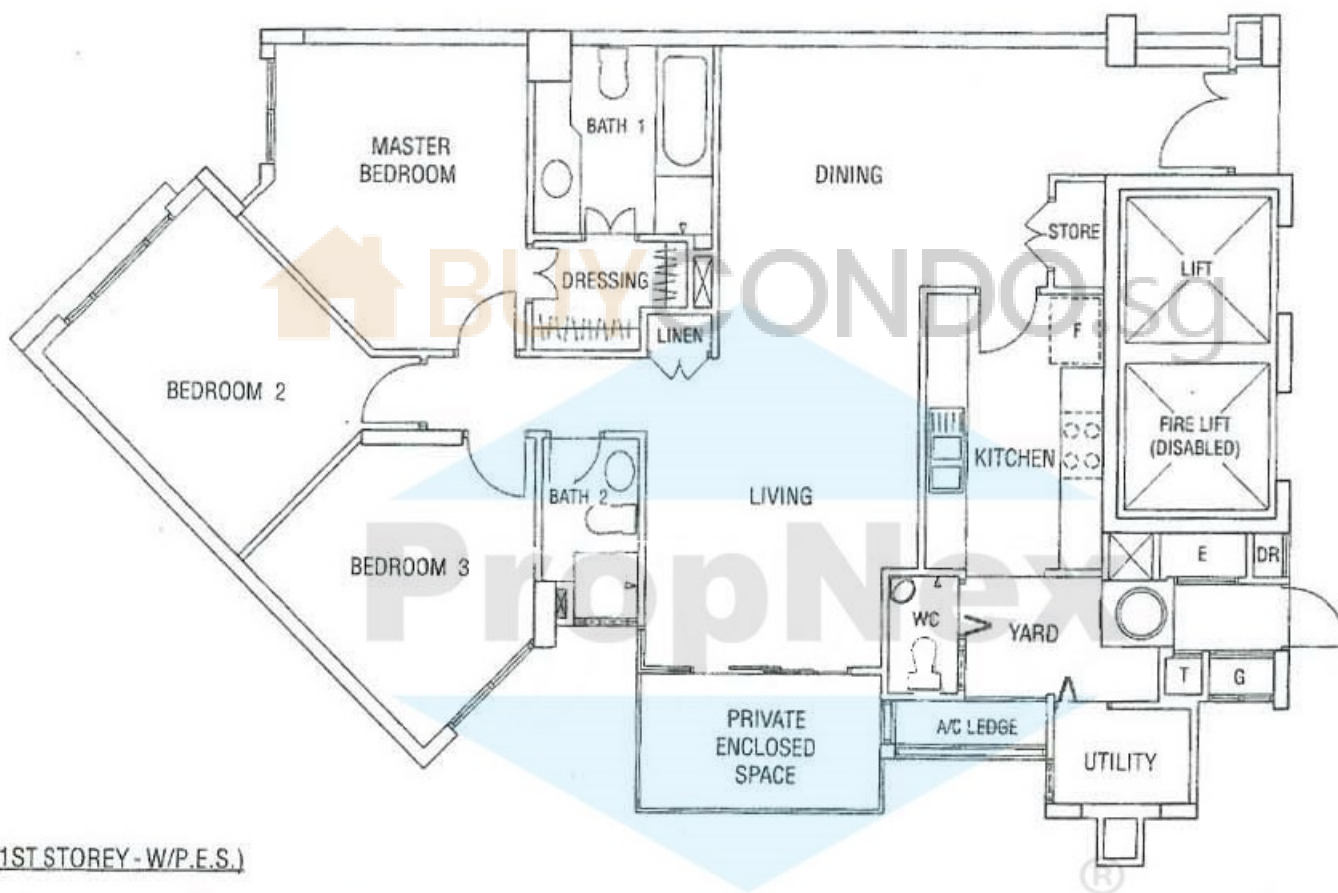
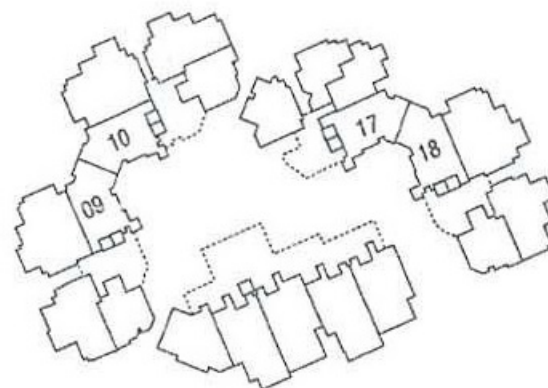
TYPE C5 (W/ROOF GARDEN)

LIVING/DINING	— 40.91 SQ. M.
KITCHEN	— 9.56 SQ. M.
MASTER BEDROOM	— 17.73 SQ. M.
BEDROOM 2	— 11.28 SQ. M.
BEDROOM 3	— 9.32 SQ. M.
ROOF GARDEN	— 15.00 SQ. M.

MAPLEWOODS

TYPE
C6

FELICIUM COURT



AREA :

TYPE C6 (1ST STOREY - W/P.E.S.)

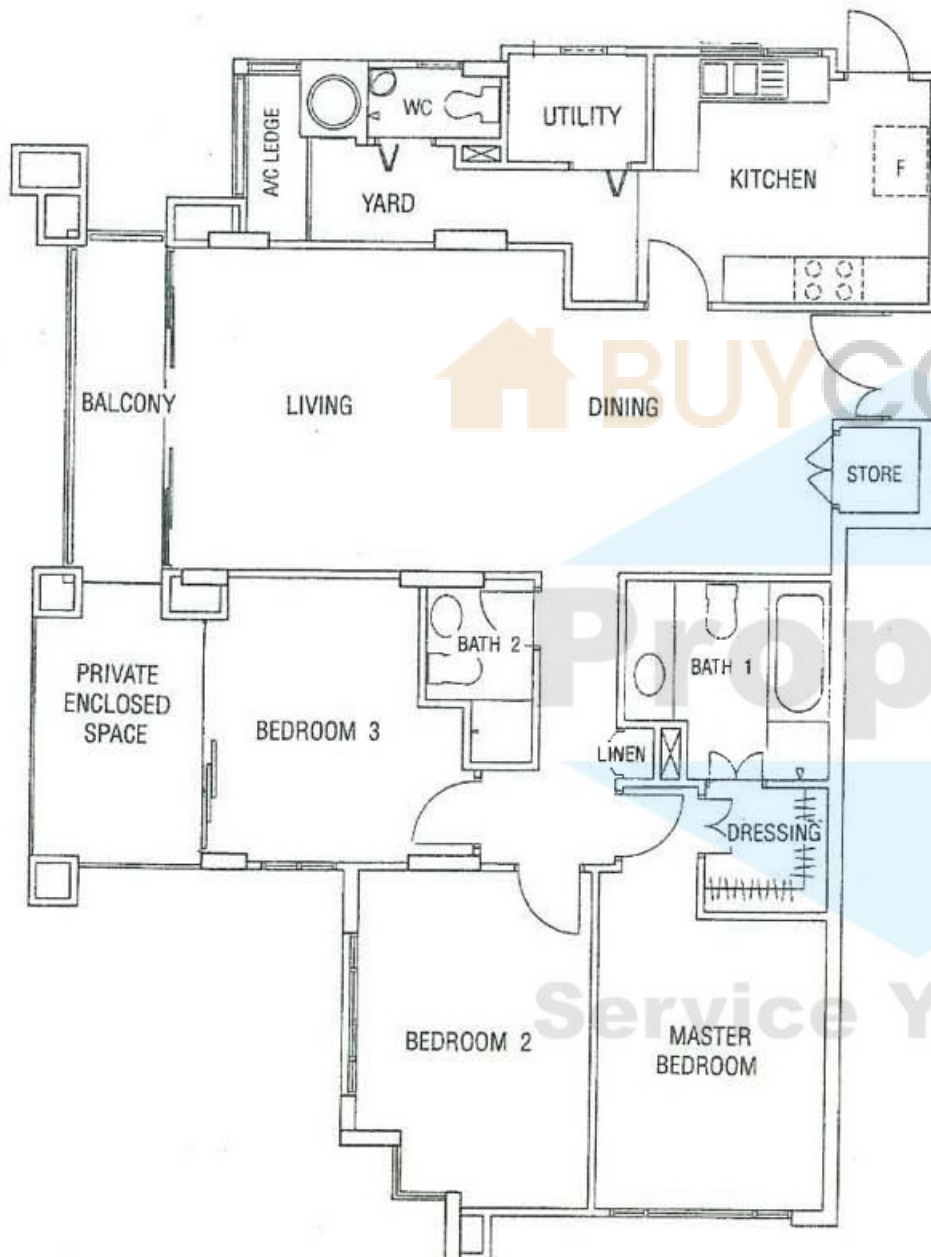
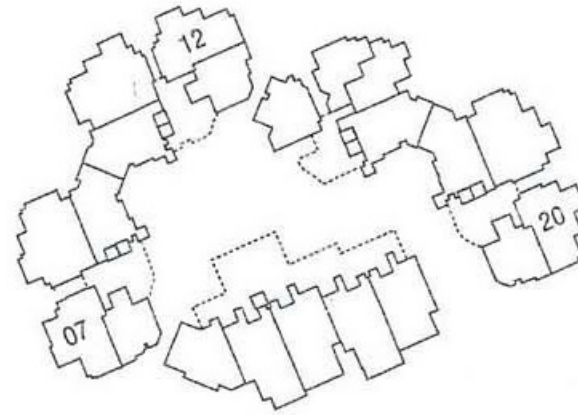
LIVING/DINING	— 37.56 SQ. M.
KITCHEN	— 9.56 SQ. M.
MASTER BEDROOM	— 16.99 SQ. M.
BEDROOM 2	— 13.05 SQ. M.
BEDROOM 3	— 11.28 SQ. M.
PRIVATE ENCLOSED SPACE	— 6.50 SQ. M.

Service You Trust

MAPLEWOODS

FELICIUM COURT

TYPE
C7



AREA:
TYPE C7 (1ST STOREY - W/P.E.S.)

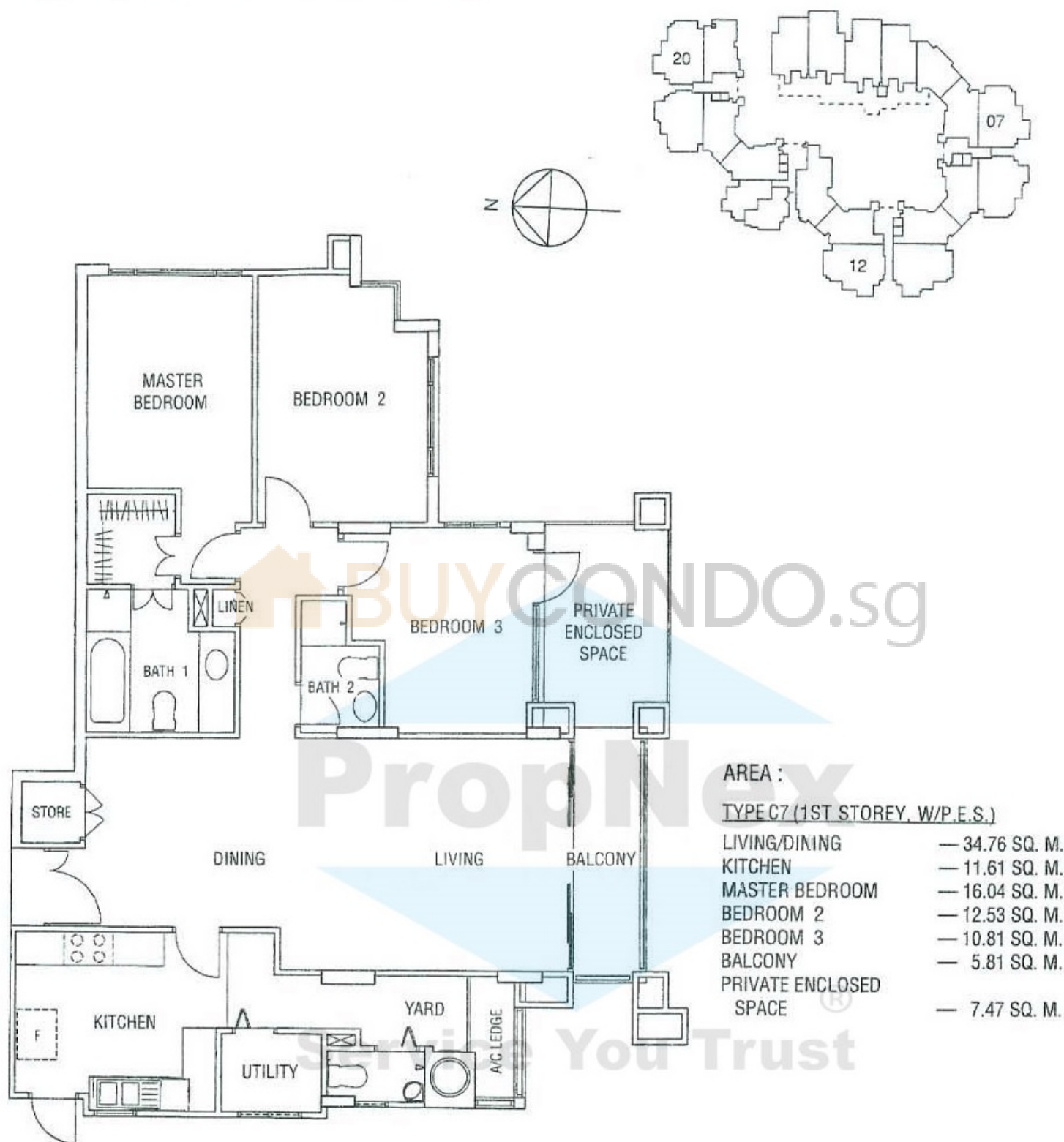
LIVING/DINING	— 34.76 SQ. M.
KITCHEN	— 11.61 SQ. M.
MASTER BEDROOM	— 16.04 SQ. M.
BEDROOM 2	— 12.53 SQ. M.
BEDROOM 3	— 10.81 SQ. M.
BALCONY	— 5.81 SQ. M.
PRIVATE ENCLOSED SPACE	— 7.47 SQ. M.

Service You Trust[®]

MAPLEWOODS

TYPE
C7

CHEMPAKA COURT

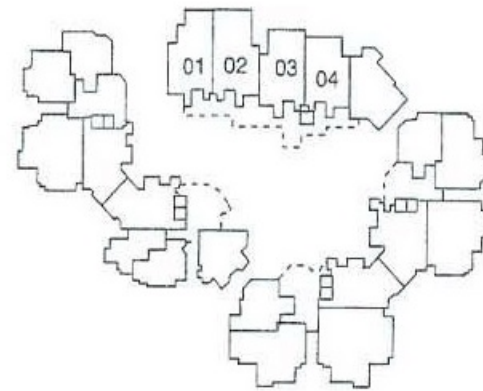
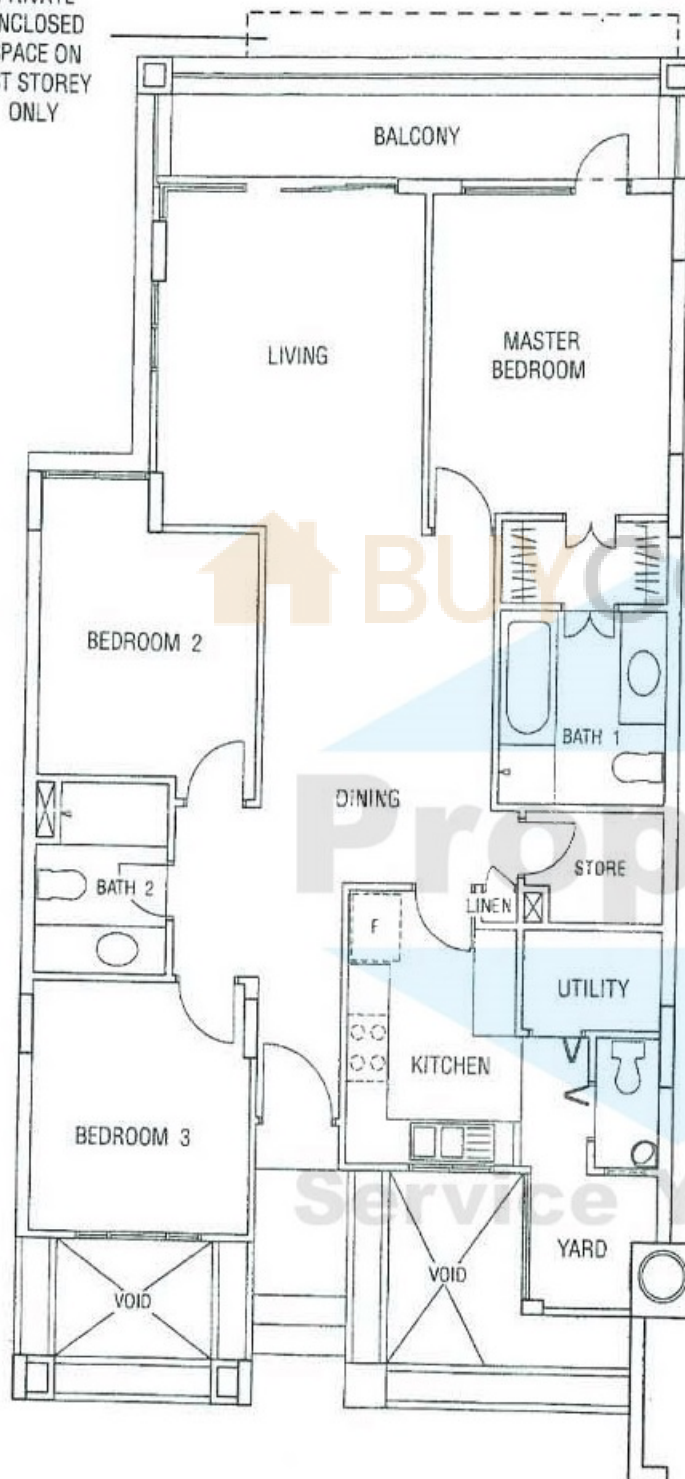


MAPLEWOODS

TYPE
C8

CHEMPAKA COURT

PRIVATE
ENCLOSED
SPACE ON
1ST STOREY
ONLY



AREA :

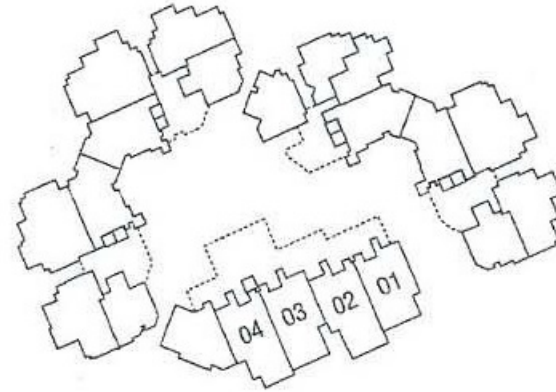
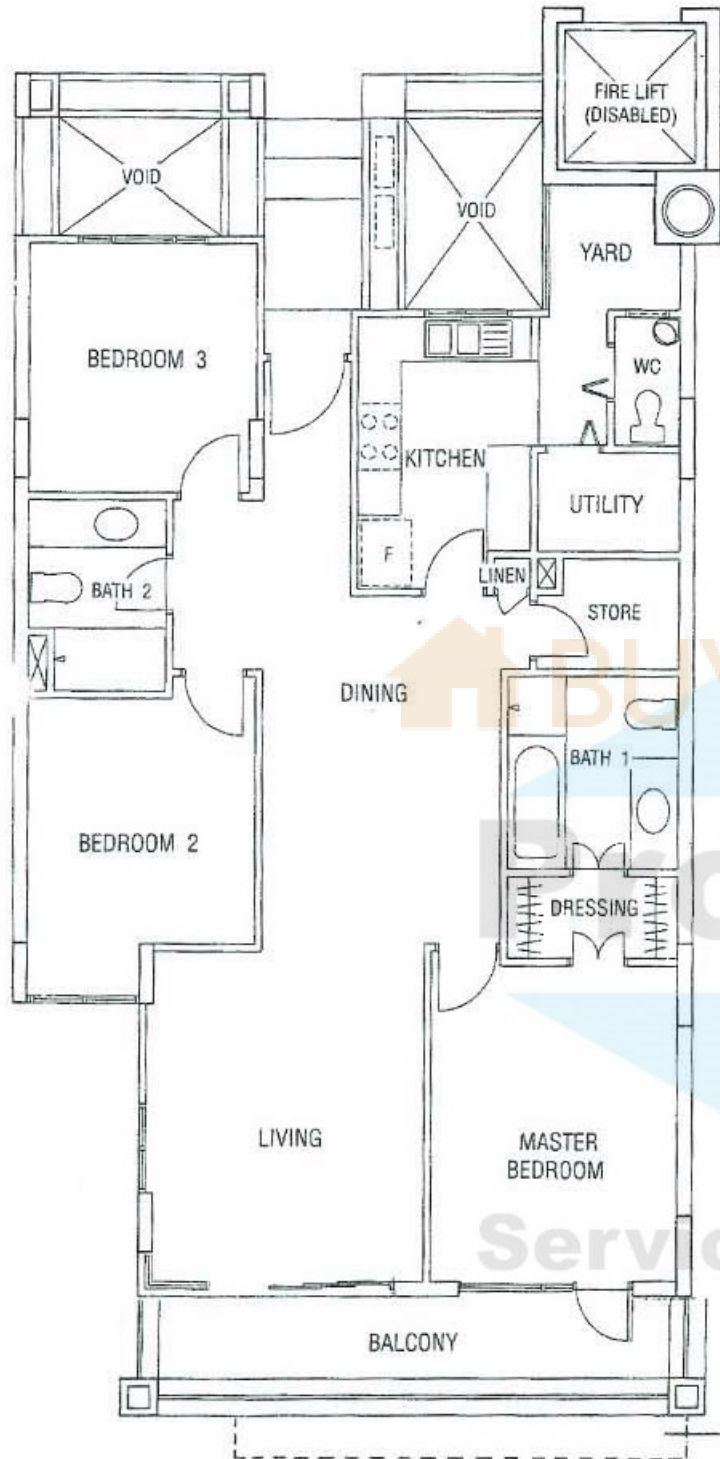
TYPE C8 (1ST W/P E.S., W/OUT BALCONY)

LIVING/DINING	— 36.90 SQ. M.
KITCHEN	— 8.75 SQ. M.
MASTER BEDROOM	— 17.47 SQ. M.
BEDROOM 2	— 11.82 SQ. M.
BEDROOM 3	— 10.61 SQ. M.
BALCONY	— 10.10 SQ. M.
PRIVATE ENCLOSED [®] SPACE	— 12.09 SQ. M.

MAPLEWOODS

TYPE
C8

FELICIUM COURT



AREA :

TYPE C8 (1ST STOREY - W/P.E.S., W/OUT BALCONY)

LIVING/DINING	— 36.90 SQ. M.
KITCHEN	— 8.75 SQ. M.
MASTER BEDROOM	— 17.47 SQ. M.
BEDROOM 2	— 11.82 SQ. M.
BEDROOM 3	— 10.61 SQ. M.
BALCONY	— 10.10 SQ. M.
PRIVATE ENCLOSED SPACE	— 12.09 SQ. M.

PRIVATE
ENCLOSED
SPACE ON
1ST STOREY
ONLY

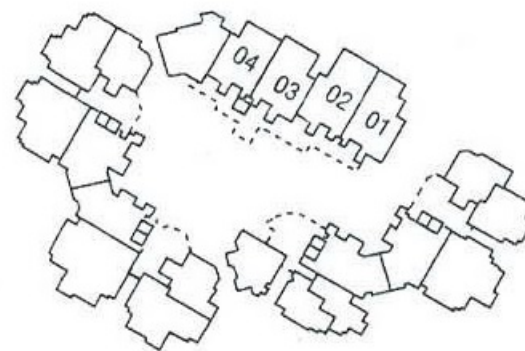
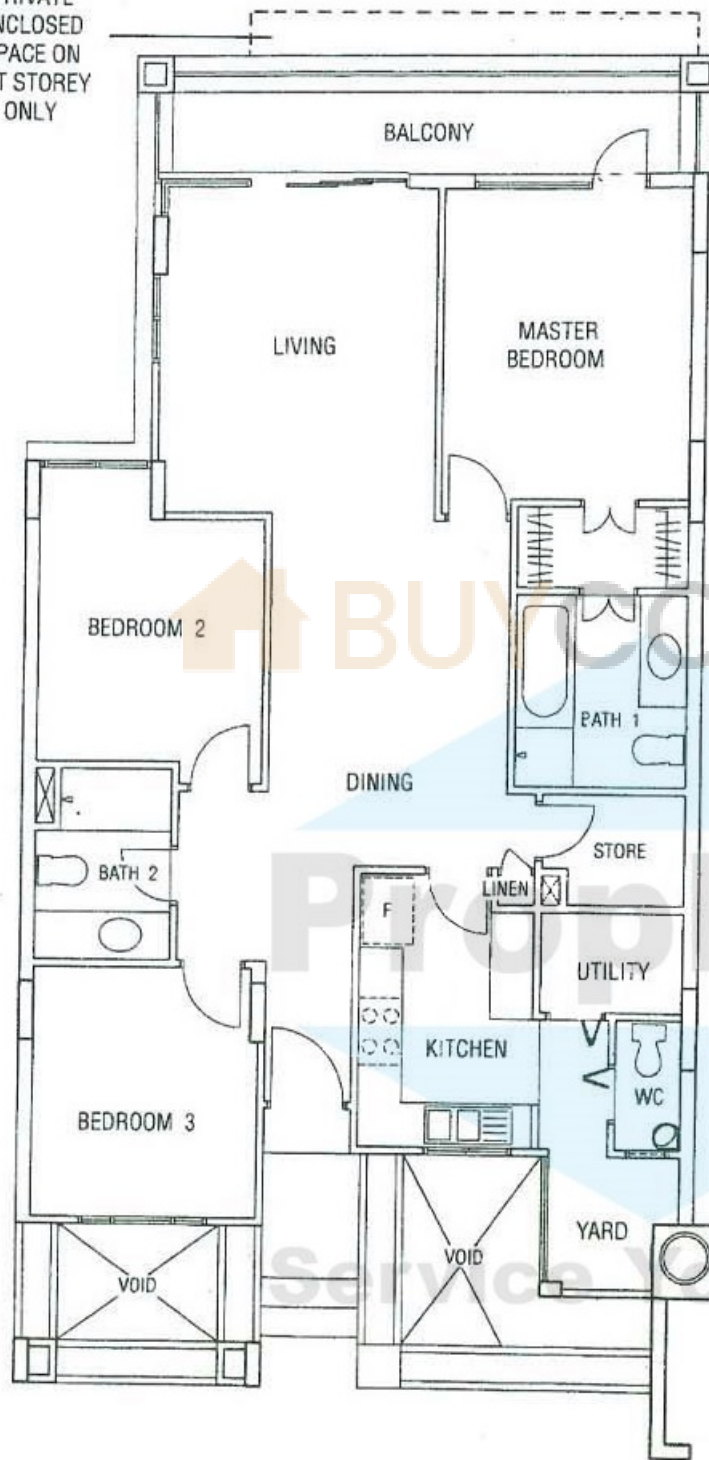
While every reasonable care has been taken in preparing this document, the developer cannot be held responsible for any inaccuracy. Plans are subject to any amendment approved by the building authorities. Floor areas are approximate and subject to final survey.

MAPLEWOODS

TYPE
C8

BAUHINIA COURT

PRIVATE
ENCLOSED
SPACE ON
1ST STOREY
ONLY



AREA :

TYPE C8 (1ST W/P.E.S., W/OUT BALCONY)

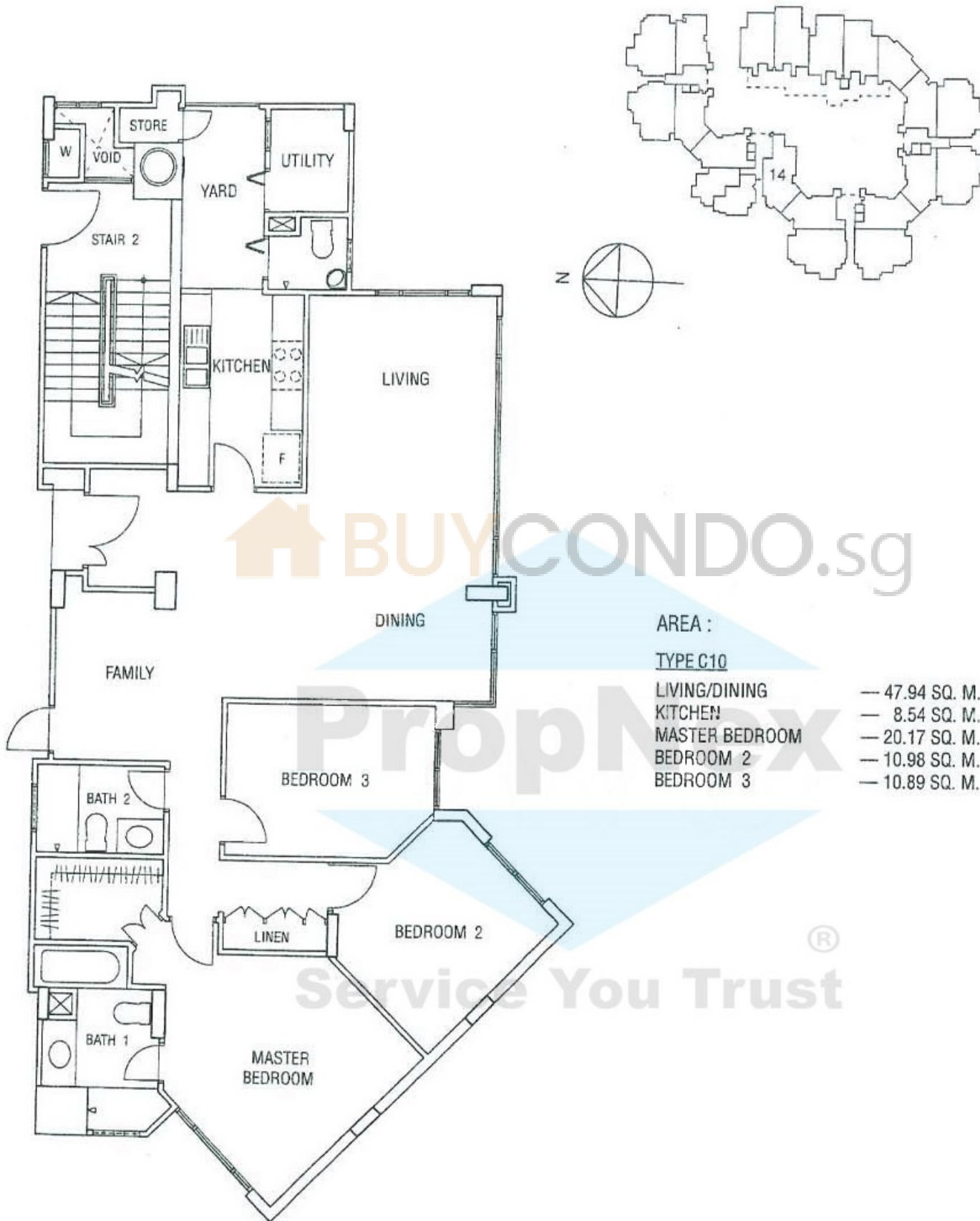
LIVING/DINING	— 36.90 SQ. M.
KITCHEN	— 8.75 SQ. M.
MASTER BEDROOM	— 17.47 SQ. M.
BEDROOM 2	— 11.82 SQ. M.
BEDROOM 3	— 10.61 SQ. M.
BALCONY	— 10.10 SQ. M.
PRIVATE ENCLOSED SPACE	— 12.09 SQ. M.

While every reasonable care has been taken in preparing this document, the developer cannot be held responsible for any inaccuracy. Plans are subject to any amendment approved by the building authorities. Floor areas are approximate and subject to final survey.

MAPLEWOODS

CHEMPAKA COURT

TYPE
C10

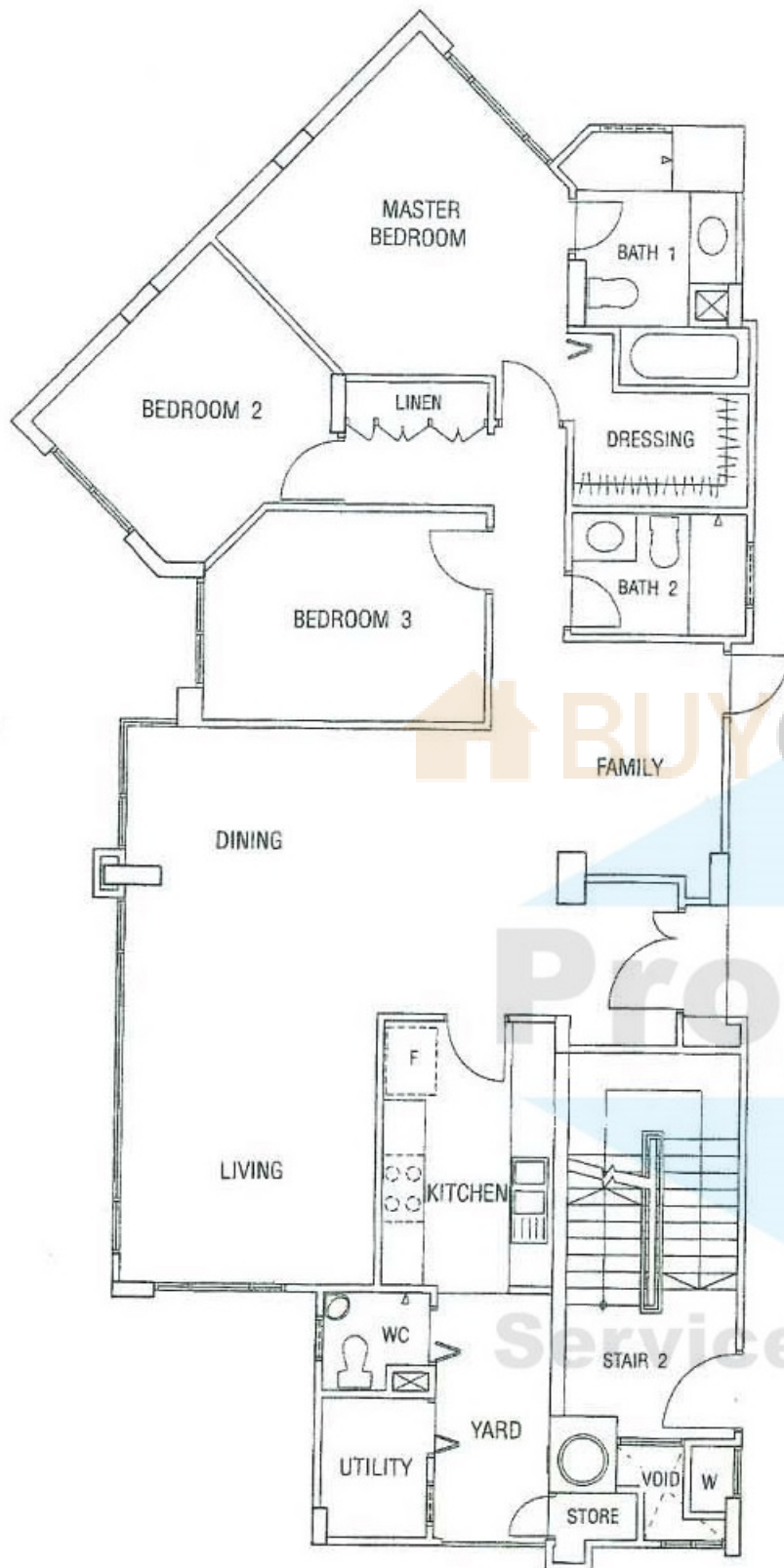
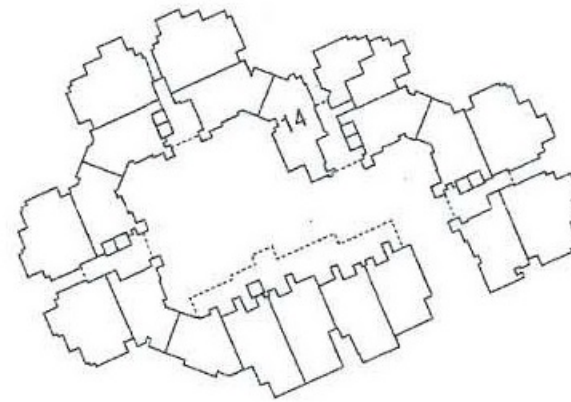


While every reasonable care has been taken in preparing this document, the developer cannot be held responsible for any inaccuracy. Plans are subject to any amendment approved by the building authorities. Floor areas are approximate and subject to final survey.

MAPLEWOODS

TYPE
C10

FELICIUM COURT



AREA :

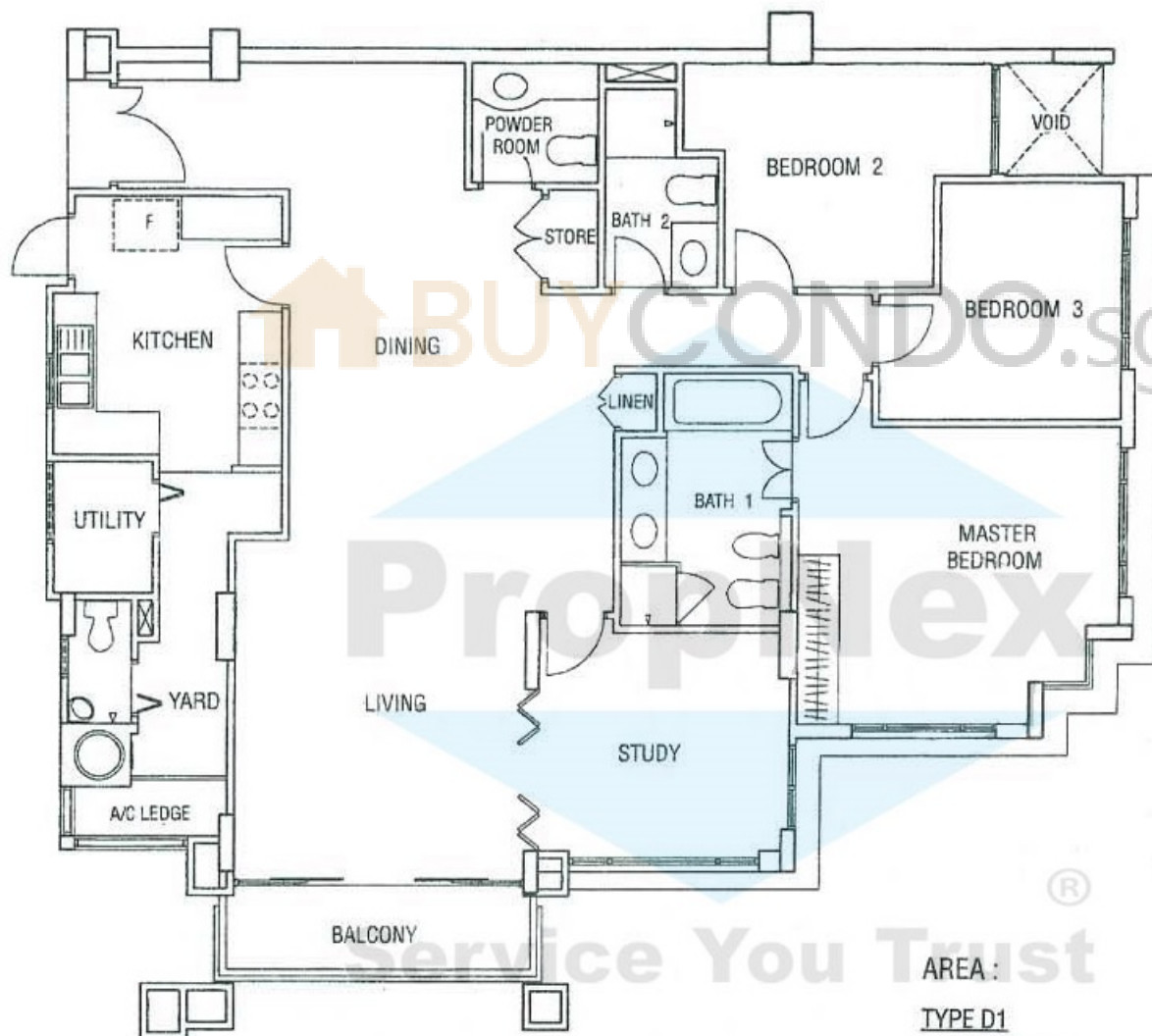
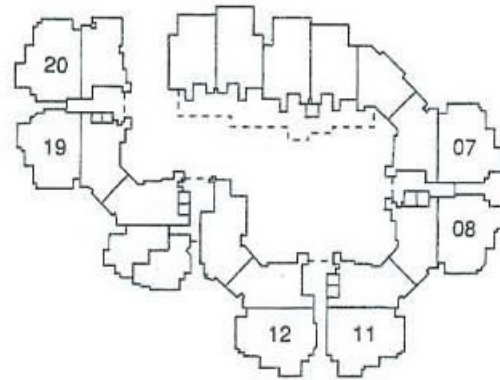
TYPE C10

LIVING/DINING	— 47.94 SQ. M.
KITCHEN	— 8.54 SQ. M.
MASTER BEDROOM	— 20.17 SQ. M.
BEDROOM 2	— 10.98 SQ. M.
BEDROOM 3	— 10.89 SQ. M.

MAPLEWOODS

CHEMPAKA COURT

TYPE
D1



AREA :

TYPE D1

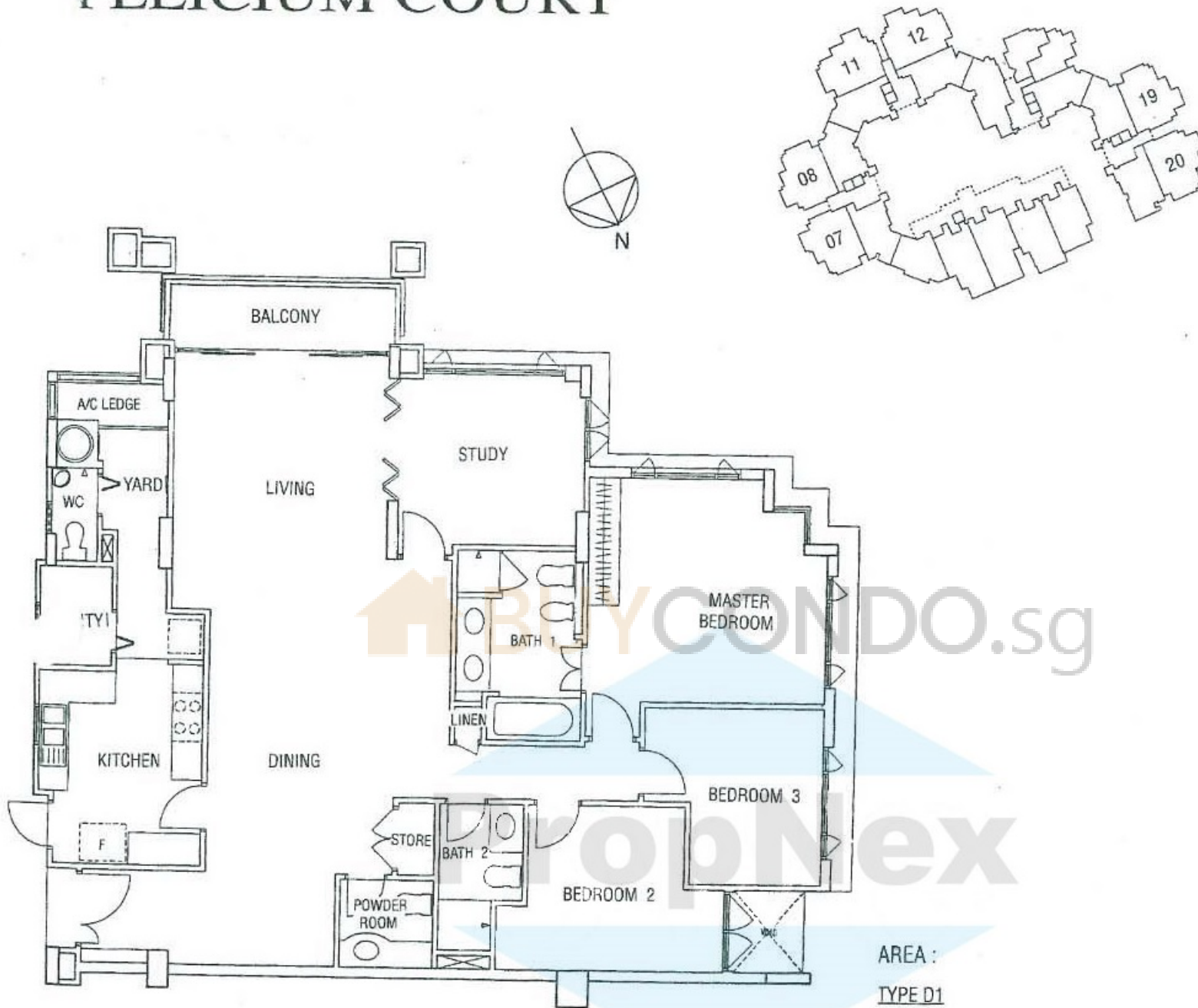
LIVING/DINING	— 50.96 SQ. M.
KITCHEN	— 11.46 SQ. M.
MASTER BEDROOM	— 18.91 SQ. M.
BEDROOM 2	— 11.27 SQ. M.
BEDROOM 3	— 10.00 SQ. M.
STUDY ROOM	— 11.35 SQ. M.
BALCONY	— 5.78 SQ. M.

While every reasonable care has been taken in preparing this document, the developer cannot be held responsible for any inaccuracy. Plans are subject to any amendment approved by the building authorities. Floor areas are approximate and subject to final survey.

MAPLEWOODS

FELICIUM COURT

TYPE
D1



AREA :

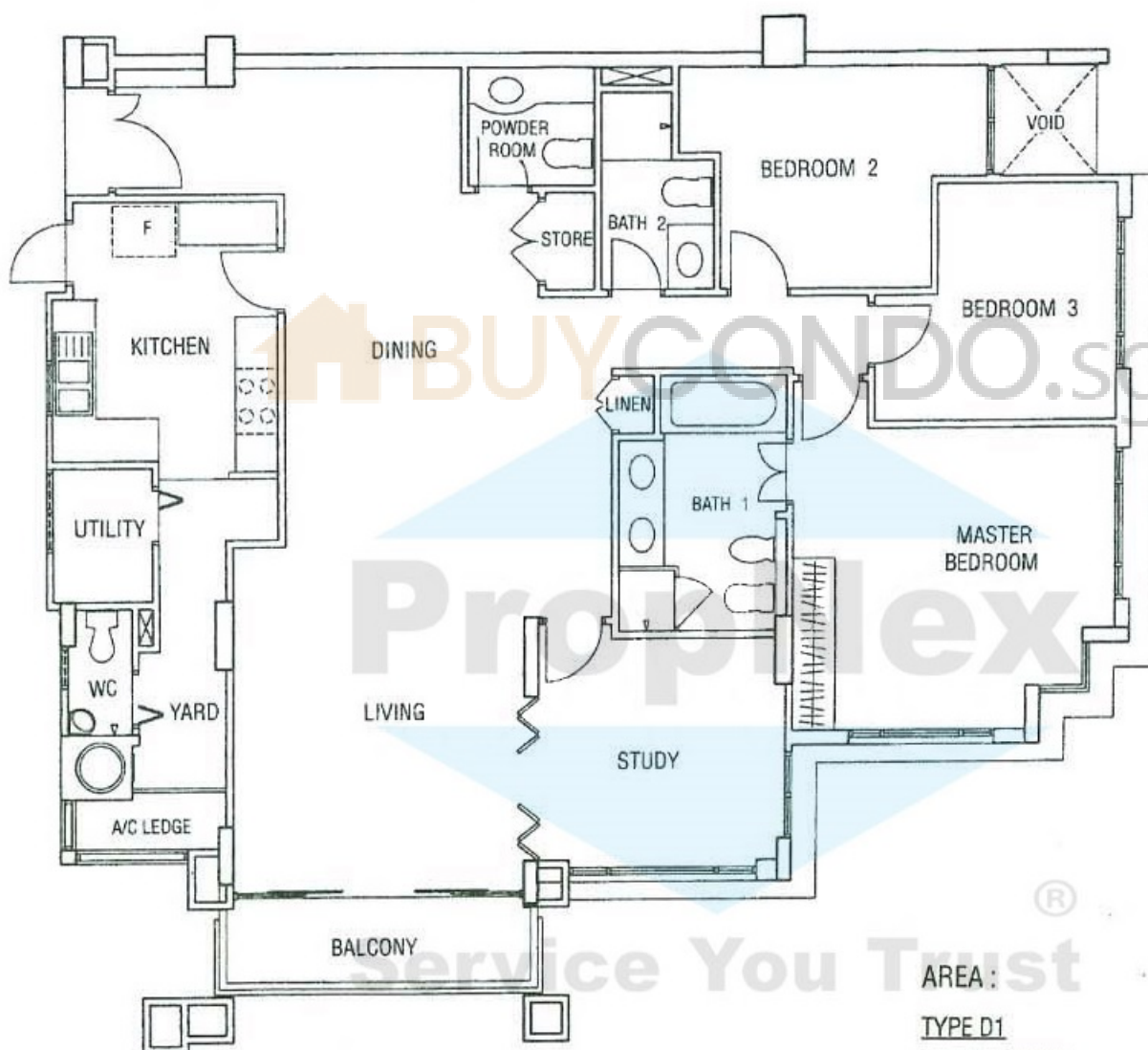
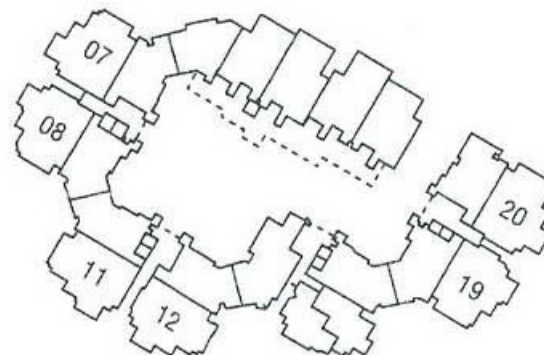
TYPE D1

LIVING/DINING	— 50.96 SQ. M.
KITCHEN	— 11.46 SQ. M.
MASTER BEDROOM	— 18.91 SQ. M.
BEDROOM 2	— 11.27 SQ. M.
BEDROOM 3	— 10.00 SQ. M.
STUDY ROOM	— 11.35 SQ. M.
BALCONY	— 5.78 SQ. M.

MAPLEWOODS

TYPE
D1

3AUHINIA COURT



AREA:

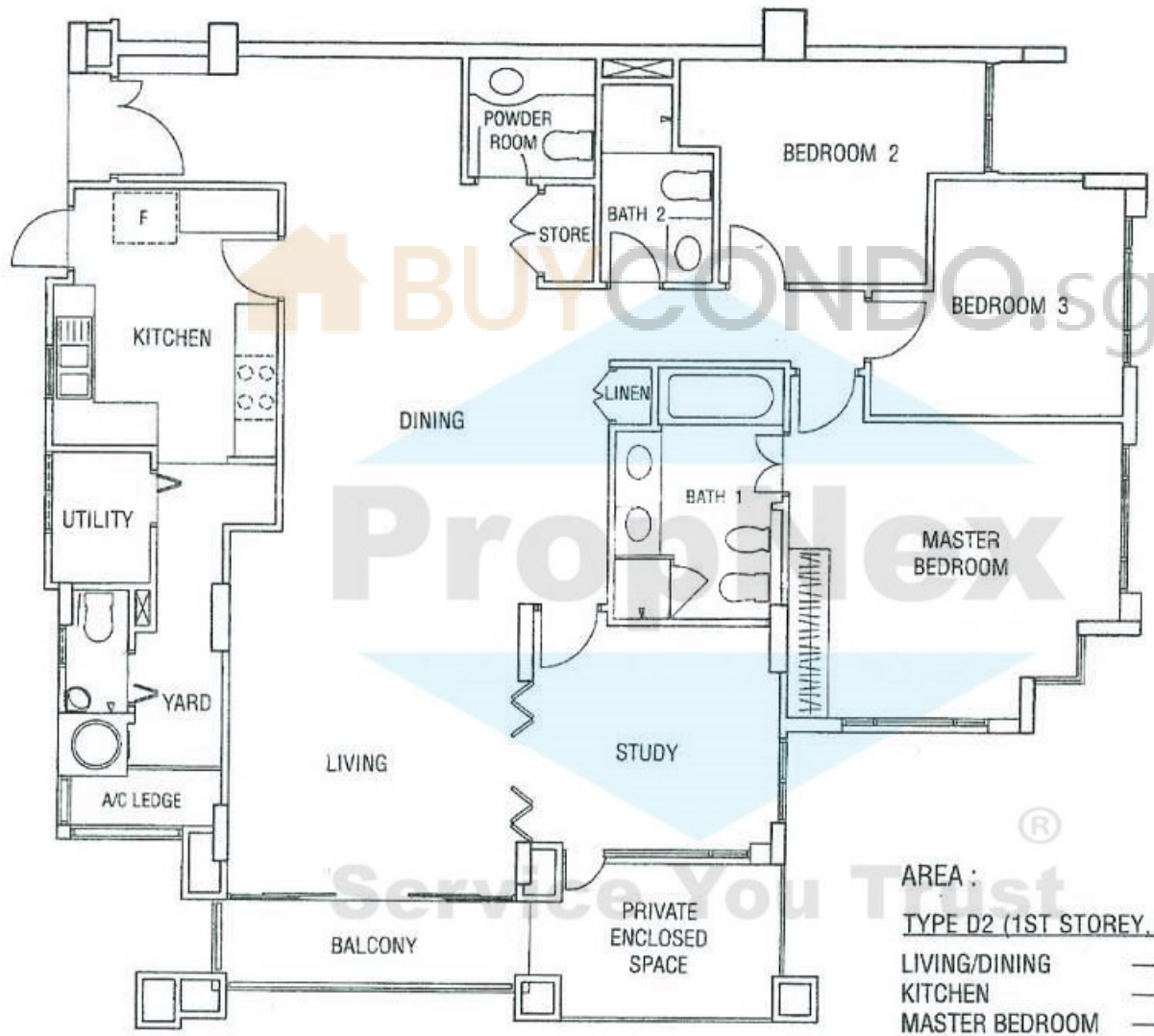
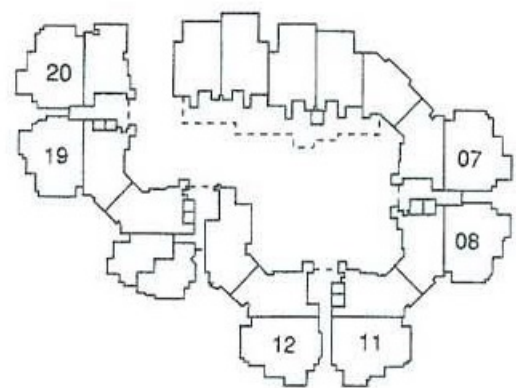
TYPE D1

LIVING/DINING	— 50.96 SQ. M.
KITCHEN	— 11.46 SQ. M.
MASTER BEDROOM	— 18.91 SQ. M.
BEDROOM 2	— 11.27 SQ. M.
BEDROOM 3	— 10.00 SQ. M.
STUDY ROOM	— 11.35 SQ. M.
BALCONY	— 5.78 SQ. M.

MAPLEWOODS

TYPE
D2

CHEMPAKA COURT



AREA :
TYPE D2 (1ST STOREY, W/P.E.S.)

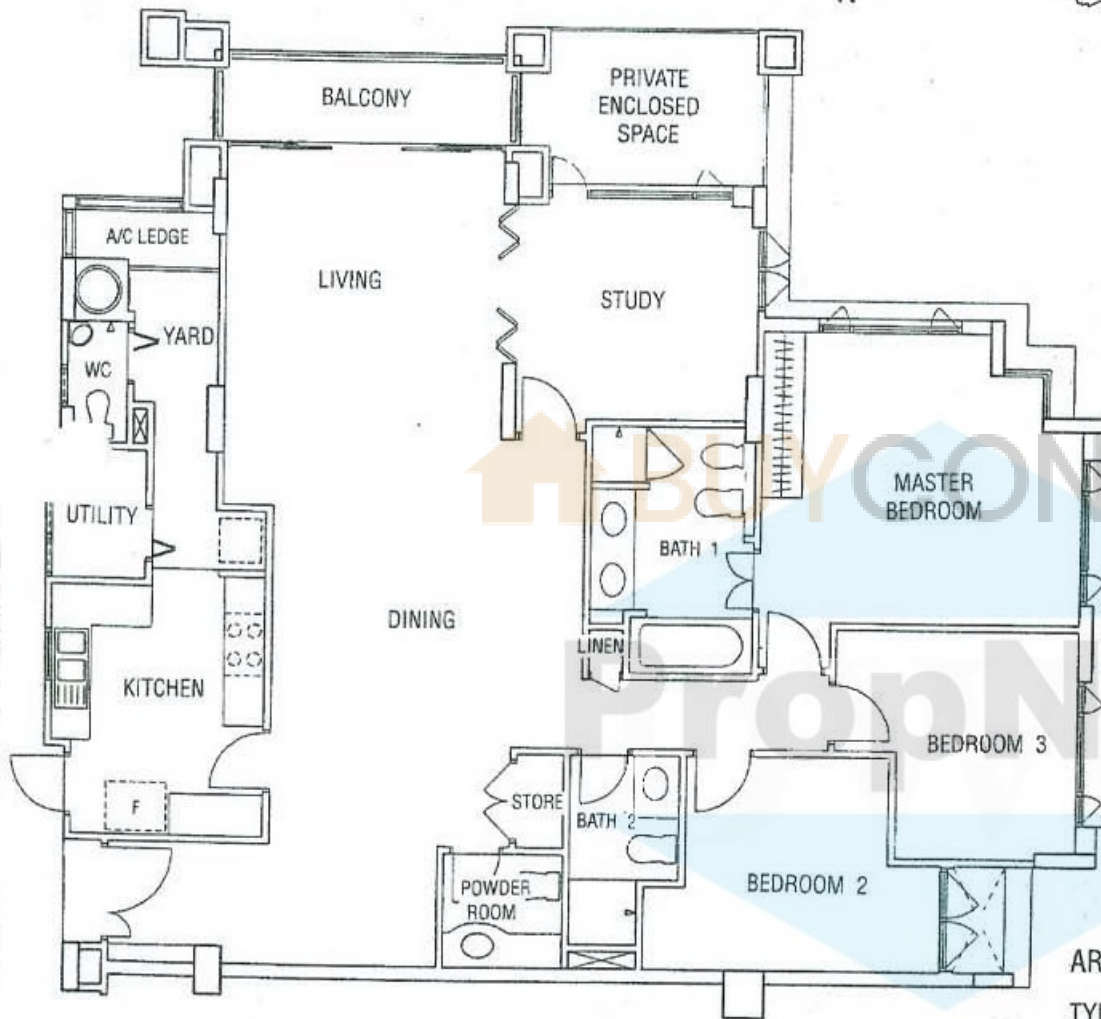
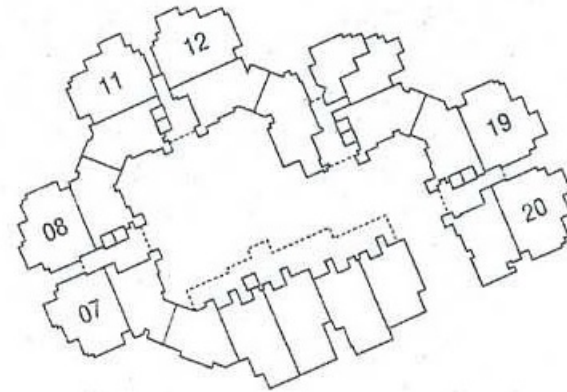
LIVING/DINING	— 52.49 SQ. M.
KITCHEN	— 11.46 SQ. M.
MASTER BEDROOM	— 19.33 SQ. M.
BEDROOM 2	— 11.27 SQ. M.
BEDROOM 3	— 10.43 SQ. M.
STUDY ROOM	— 11.35 SQ. M.
BALCONY	— 5.81 SQ. M.

While every reasonable care has been taken in preparing this document, the developer cannot be held responsible for any inaccuracy. Plans are subject to any amendment approved by the building authorities. Floor areas are approximate and subject to final survey.

MAPLEWOODS

FELICIUM COURT

TYPE
D2



AREA :
TYPE D2 (1ST STOREY - W/P.E.S.)

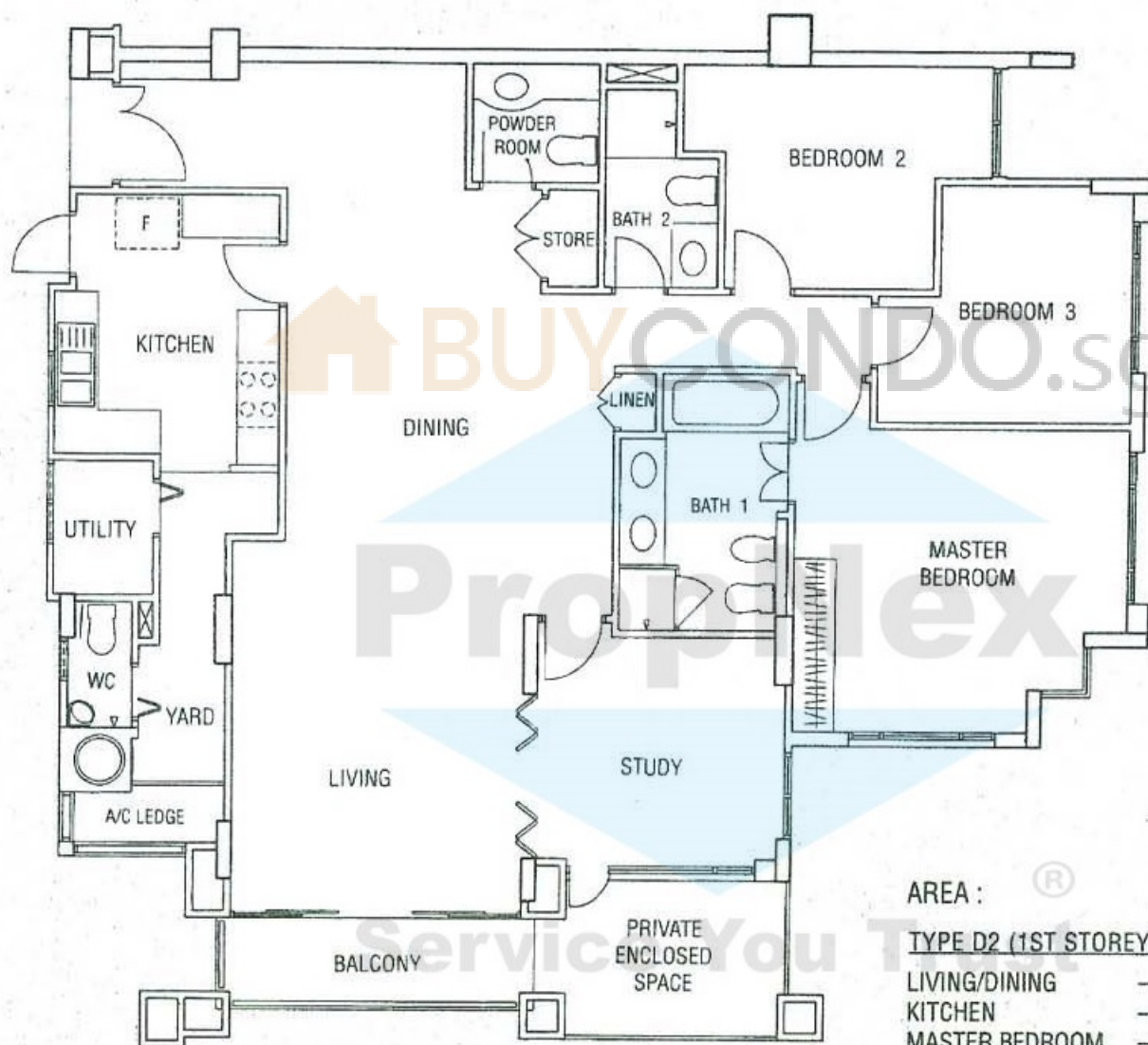
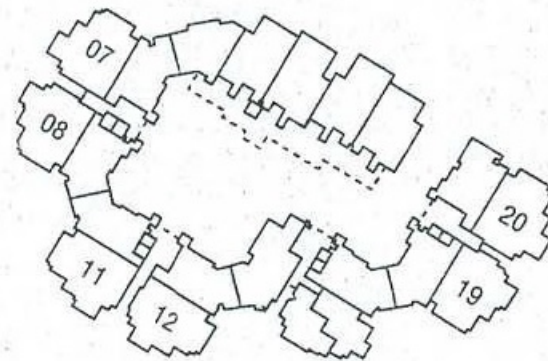
LIVING/DINING	— 52.49 SQ. M.
KITCHEN	— 11.46 SQ. M.
MASTER BEDROOM	— 19.33 SQ. M.
BEDROOM 2	— 11.27 SQ. M.
BEDROOM 3	— 10.43 SQ. M.
STUDY ROOM	— 11.35 SQ. M.
BALCONY	— 5.81 SQ. M.
PRIVATE ENCLOSED SPACE	— 7.47 SQ. M.

While every reasonable care has been taken in preparing this document, the developer cannot be held responsible for any inaccuracy. Plans are subject to any amendment approved by the building authorities. Floor areas are approximate and subject to final survey.

MAPLEWOODS

TYPE
D2

BAUHINIA COURT



AREA :

TYPE D2 (1ST STOREY, W/P.E.S.)

LIVING/DINING	— 52.49 SQ. M.
KITCHEN	— 11.46 SQ. M.
MASTER BEDROOM	— 19.33 SQ. M.
BEDROOM 2	— 11.27 SQ. M.
BEDROOM 3	— 10.43 SQ. M.
STUDY ROOM	— 11.35 SQ. M.
BALCONY	— 5.81 SQ. M.

MAPLEWOODS

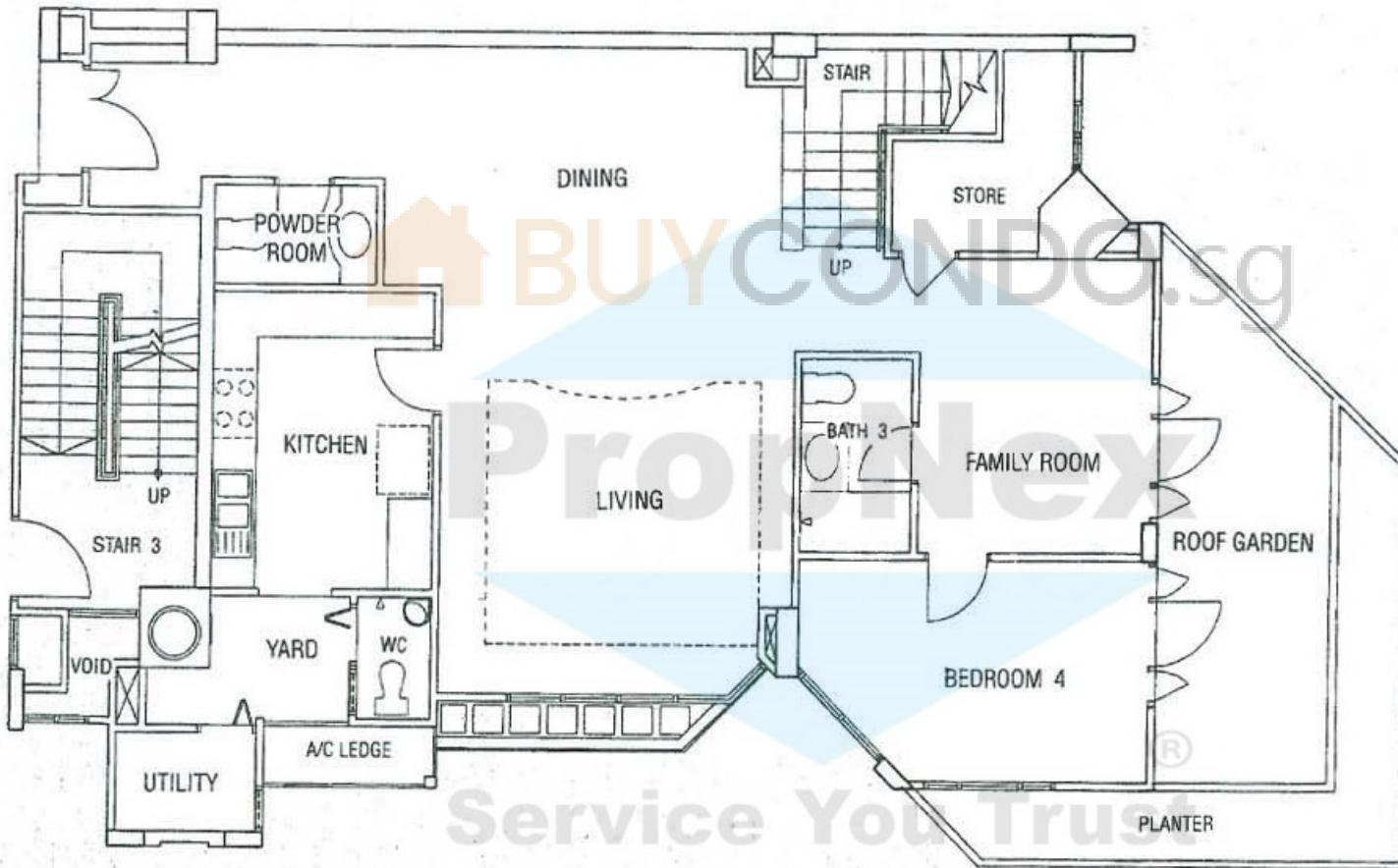
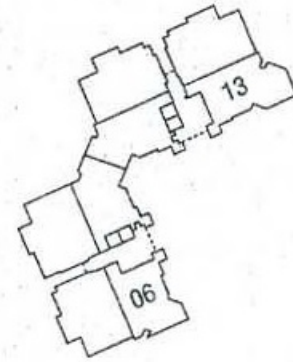
FELICIUM COURT

TYPE
P1
LOWER
FLOOR

AREA :

TYPE P1

LIVING/DINING	— 49.02 SQ. M.
KITCHEN	— 11.86 SQ. M.
BEDROOM 4	— 12.67 SQ. M.
FAMILY ROOM	— 12.13 SQ. M.
ROOF GARDEN	— 15.00 SQ. M.



While every reasonable care has been taken in preparing this document, the developer cannot be held responsible for any inaccuracy. Plans are subject to any amendment approved by the building authorities. Floor areas are approximate and subject to final survey.

MAPLEWOODS

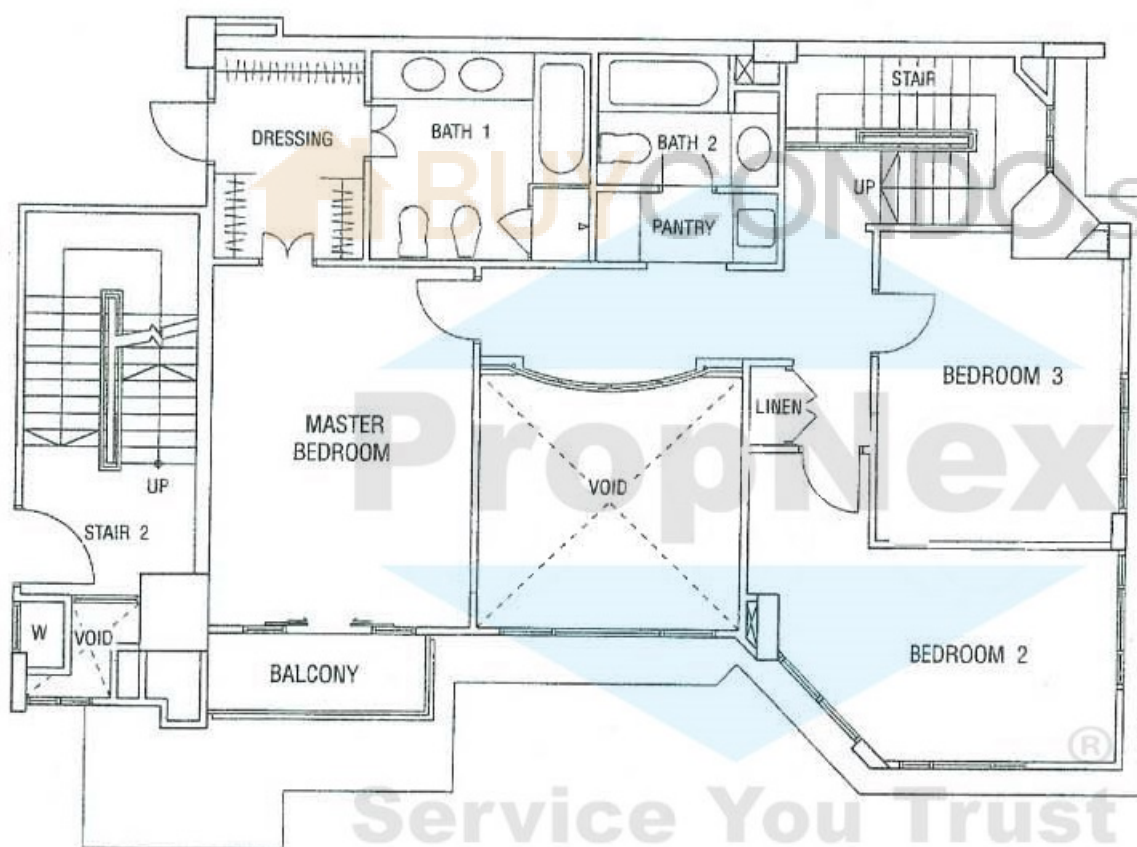
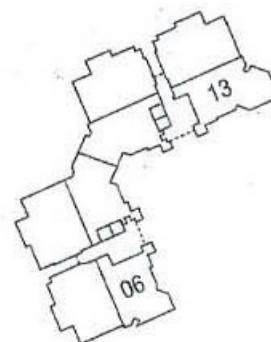
FELICIUM COURT

TYPE
P1
UPPER
FLOOR

AREA :

TYPE P1

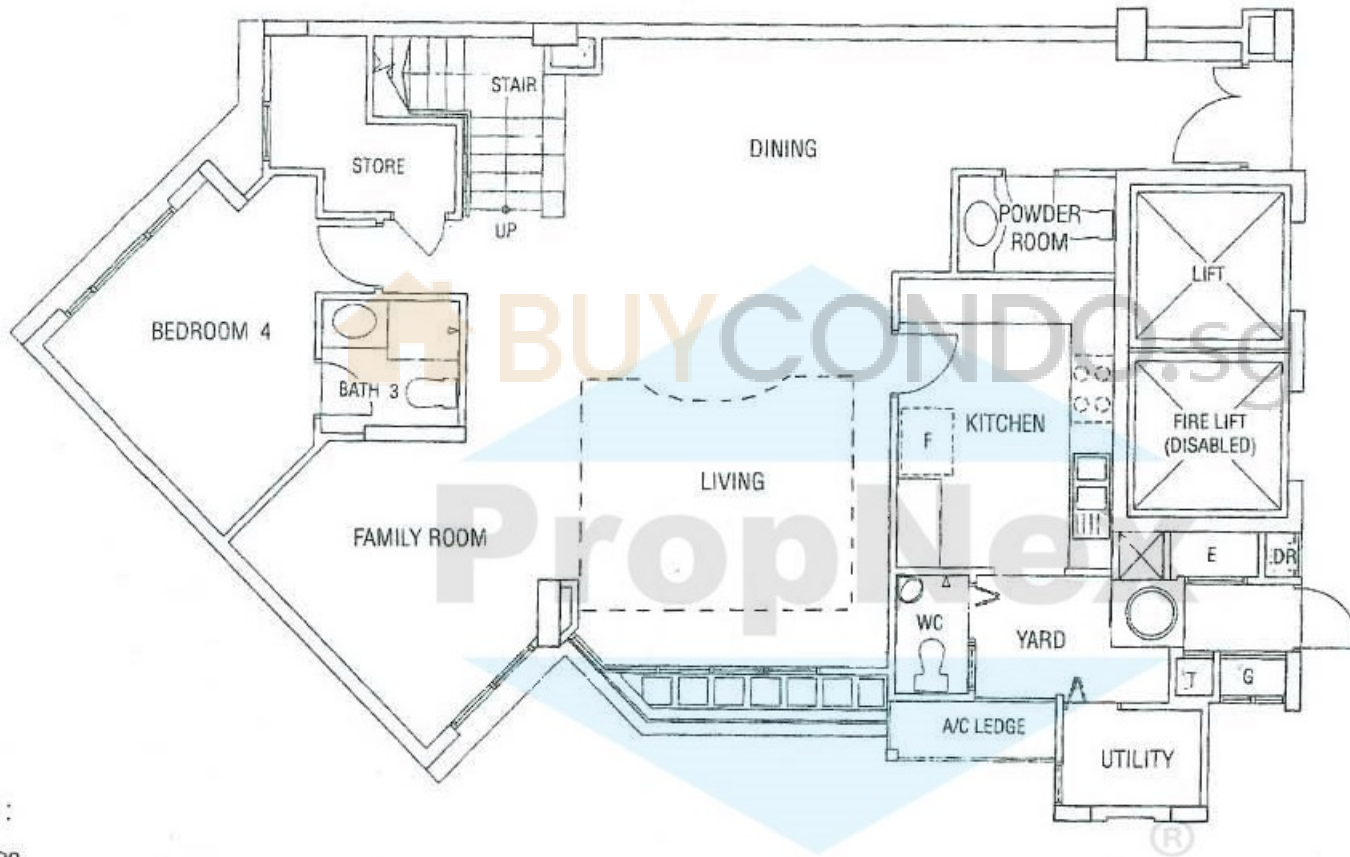
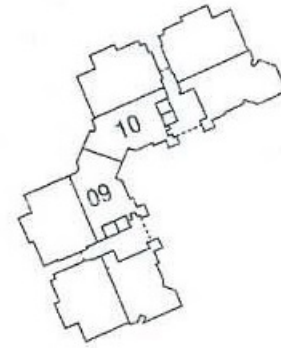
MASTER BEDROOM	— 24.02 SQ. M.
BEDROOM 2	— 15.14 SQ. M.
BEDROOM 3	— 13.75 SQ. M.
BALCONY	— 3.00 SQ. M.



MAPLEWOODS

FELICIUM COURT

TYPE
P2
LOWER
FLOOR



AREA :

TYPE P2

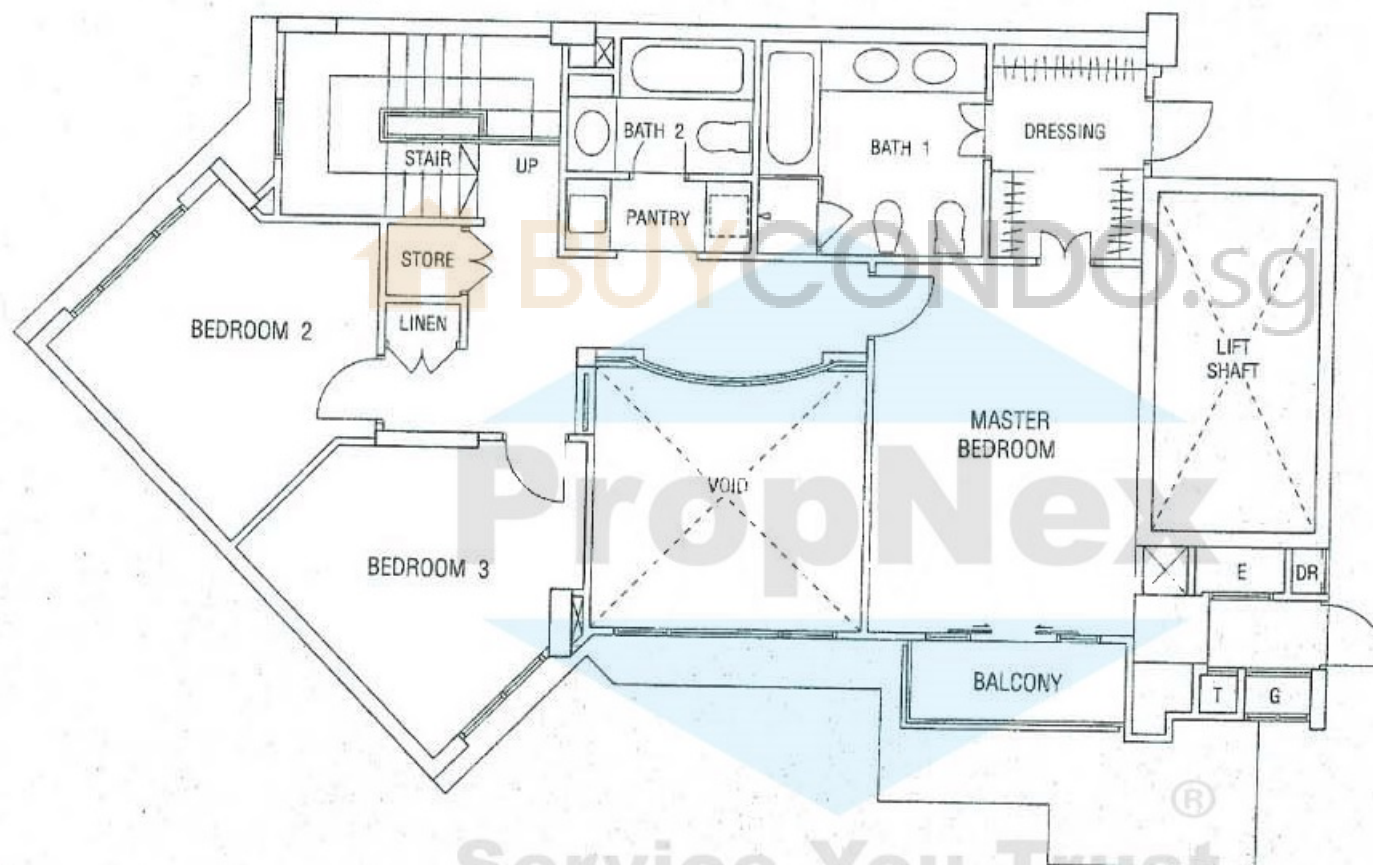
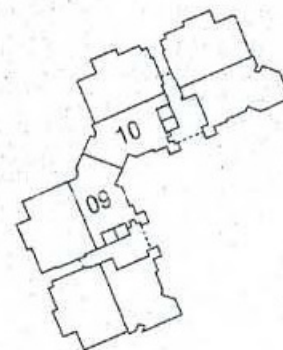
LIVING/DINING/FAMILY RM. — 63.78 SQ. M.
 KITCHEN — 11.86 SQ. M.
 BEDROOM 4 — 12.28 SQ. M.

While every reasonable care has been taken in preparing this document, the developer cannot be held responsible for any inaccuracy. Plans are subject to any amendment approved by the building authorities. Floor areas are approximate and subject to final survey.

MAPLEWOODS

ELICIUM COURT

TYPE
P2
UPPER
FLOOR



AREA :

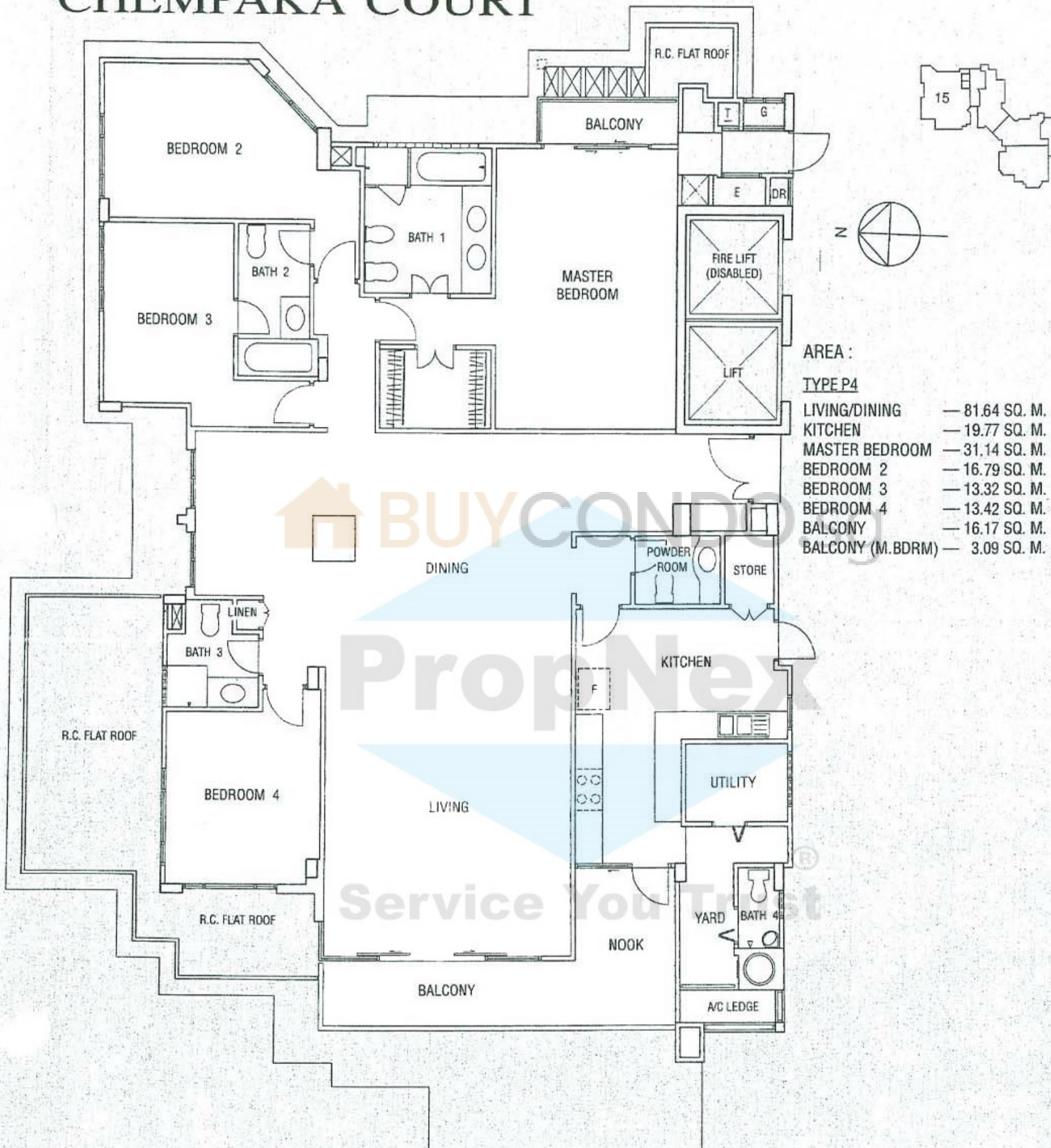
TYPE P2

MASTER BEDROOM	— 32.95 SQ. M.
BEDROOM 2	— 12.94 SQ. M.
BEDROOM 3	— 12.79 SQ. M.
BALCONY	— 3.30 SQ. M.

MAPLEWOODS

TYPE
P4

CHEMPAKA COURT



AREA :

TYPE P4

LIVING/DINING	— 81.64 SQ. M.
KITCHEN	— 19.77 SQ. M.
MASTER BEDROOM	— 31.14 SQ. M.
BEDROOM 2	— 16.79 SQ. M.
BEDROOM 3	— 13.32 SQ. M.
BEDROOM 4	— 13.42 SQ. M.
BALCONY	— 16.17 SQ. M.
BALCONY (M.BDRM)	— 3.09 SQ. M.

While every reasonable care has been taken in preparing this document, the developer cannot be held responsible for any inaccuracy. Plans are subject to any amendment approved by the building authorities. Floor areas are approximate and subject to final survey.

MAPLEWOODS

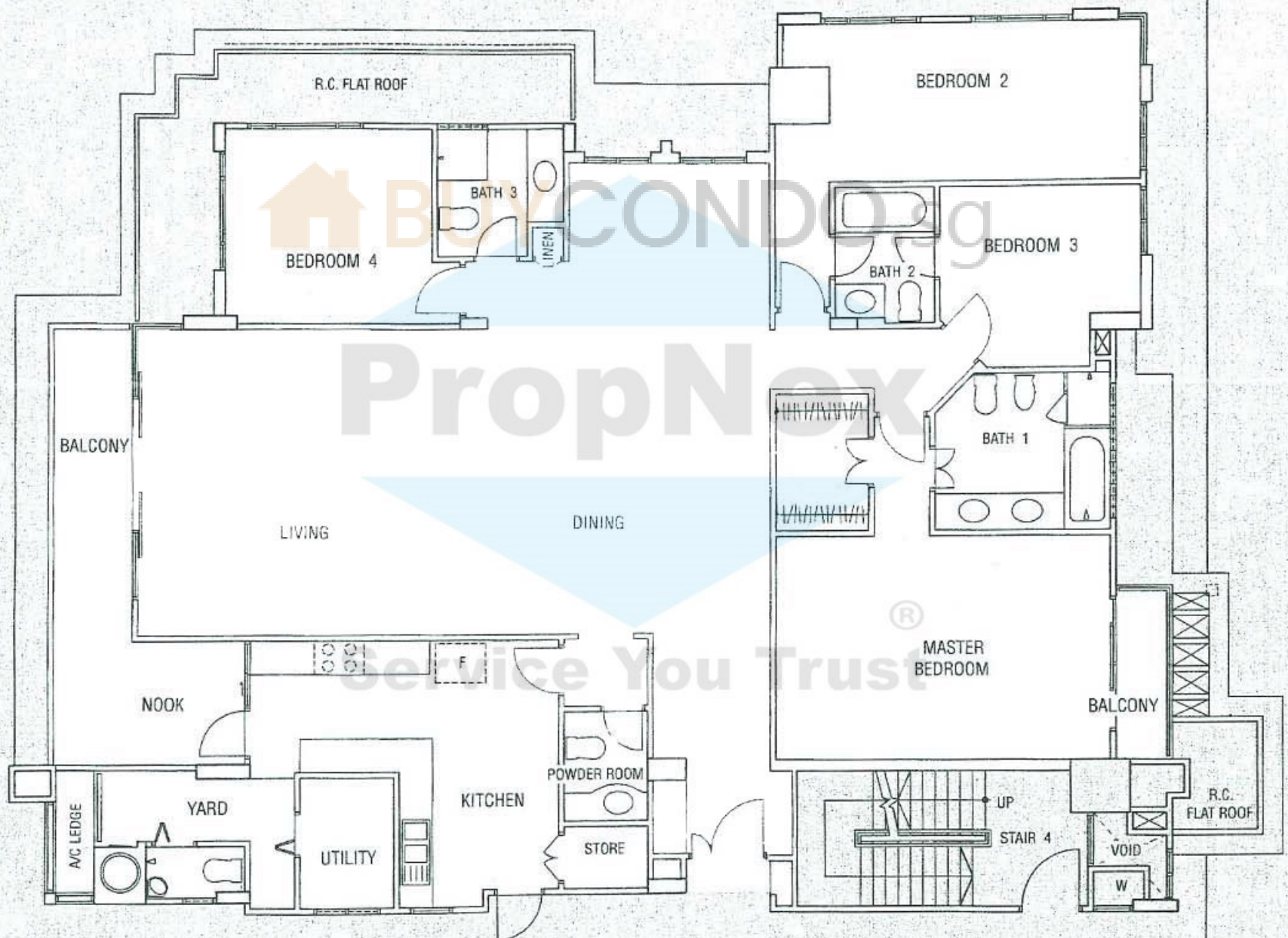
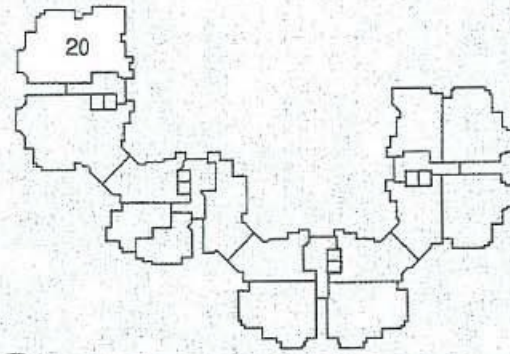
CHEMPAKA COURT

TYPE
P5

AREA :

TYPE P5

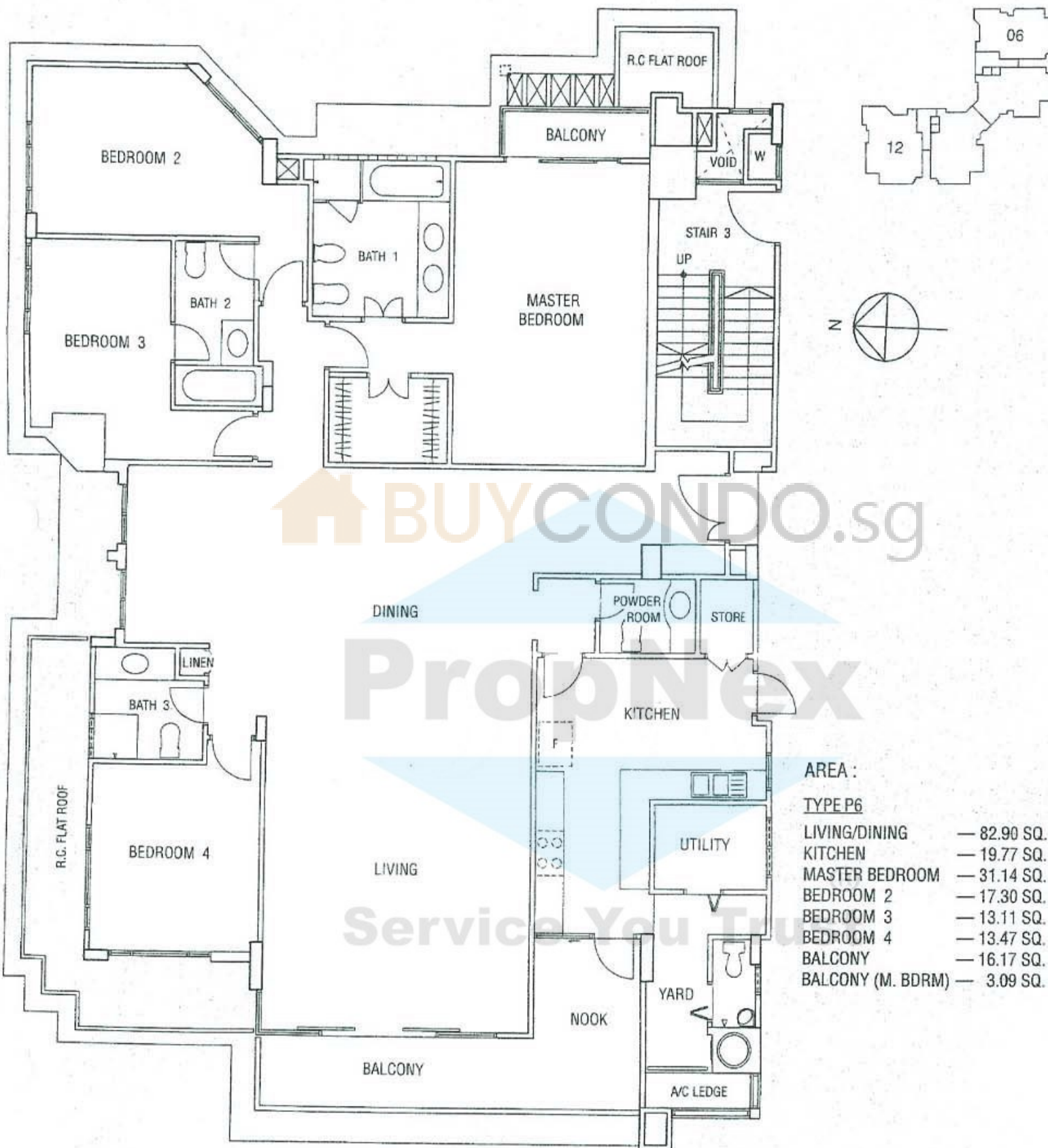
LIVING/DINING	— 82.90 SQ. M.
KITCHEN	— 19.77 SQ. M.
MASTER BEDROOM	— 30.46 SQ. M.
BEDROOM 2	— 19.45 SQ. M.
BEDROOM 3	— 10.20 SQ. M.
BEDROOM 4	— 13.47 SQ. M.
BALCONY	— 16.17 SQ. M.
BALCONY (M. BDRM)	— 3.09 SQ. M.



MAPLEWOODS

CHEMPAKA COURT

TYPE
P6



AREA :

TYPE P6

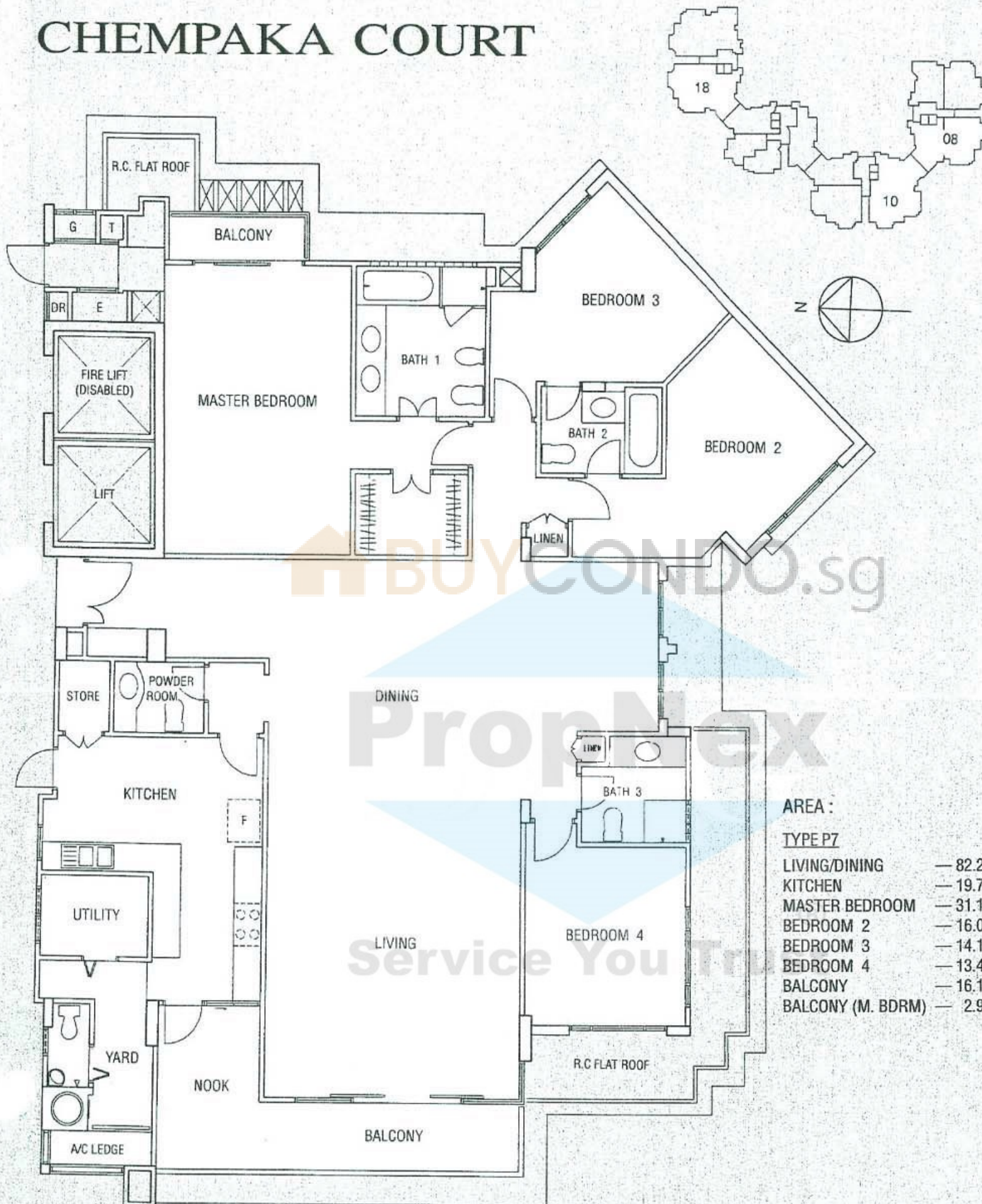
LIVING/DINING	— 82.90 SQ. M.
KITCHEN	— 19.77 SQ. M.
MASTER BEDROOM	— 31.14 SQ. M.
BEDROOM 2	— 17.30 SQ. M.
BEDROOM 3	— 13.11 SQ. M.
BEDROOM 4	— 13.47 SQ. M.
BALCONY	— 16.17 SQ. M.
BALCONY (M. BDRM)	— 3.09 SQ. M.

While every reasonable care has been taken in preparing this document, the developer cannot be held responsible for any inaccuracy. Plans are subject to any amendment approved by the building authorities. Floor areas are approximate and subject to final survey.

MAPLEWOODS

CHEMPAKA COURT

TYPE
P7



AREA :

TYPE P7

LIVING/DINING	— 82.28 SQ. M.
KITCHEN	— 19.77 SQ. M.
MASTER BEDROOM	— 31.14 SQ. M.
BEDROOM 2	— 16.01 SQ. M.
BEDROOM 3	— 14.11 SQ. M.
BEDROOM 4	— 13.47 SQ. M.
BALCONY	— 16.17 SQ. M.
BALCONY (M. BDRM)	— 2.99 SQ. M.