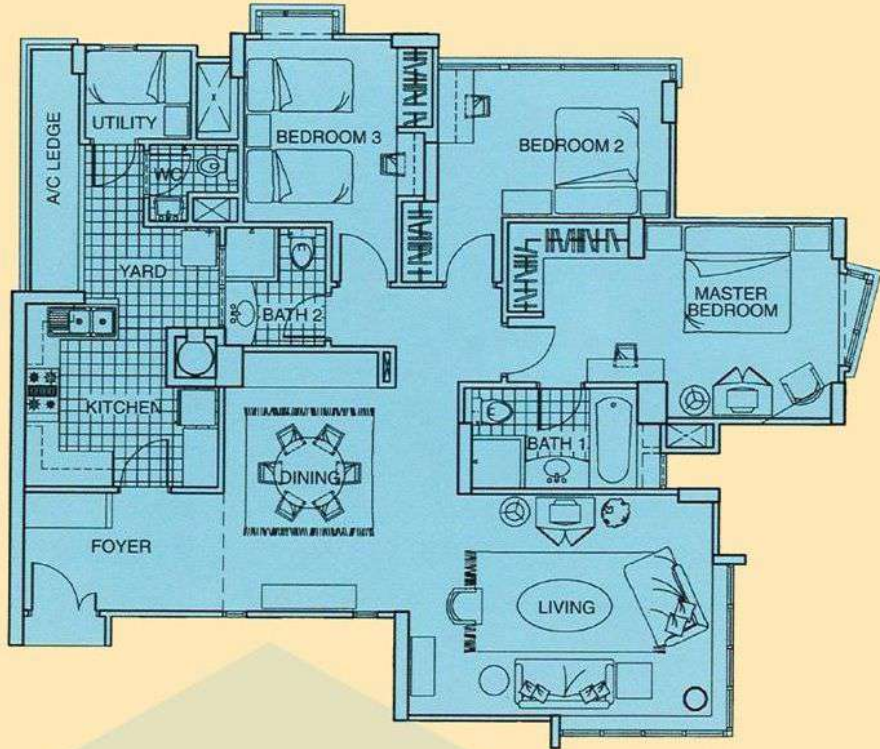


3 BEDROOMS

C4

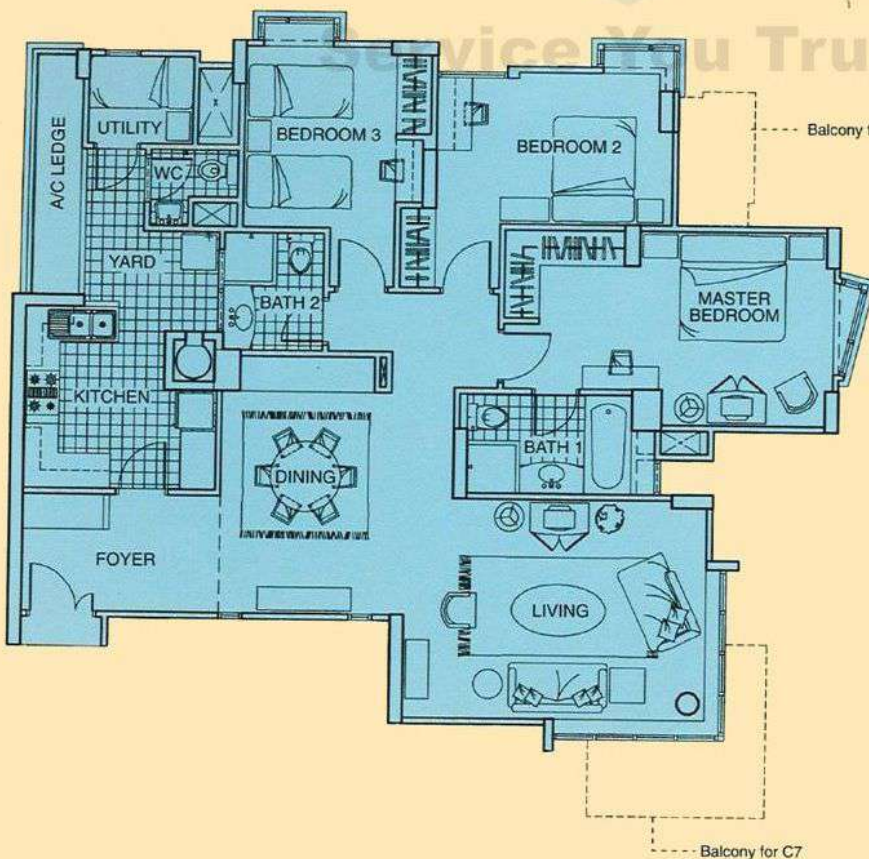
130 sqm

Living/Dining	36 sqm
Kitchen	9 sqm
MBR	17 sqm
BR2	12 sqm
BR3	11 sqm



PropNex

3 BEDROOMS



C5

131 sqm

Living/Dining	36 sqm
Kitchen	9 sqm
MBR	17 sqm
BR2	13 sqm
BR3	11 sqm

Note:
 C7 - Living bal. 4 sqm
 - BR2 bal. 3 sqm

Twice You Trust

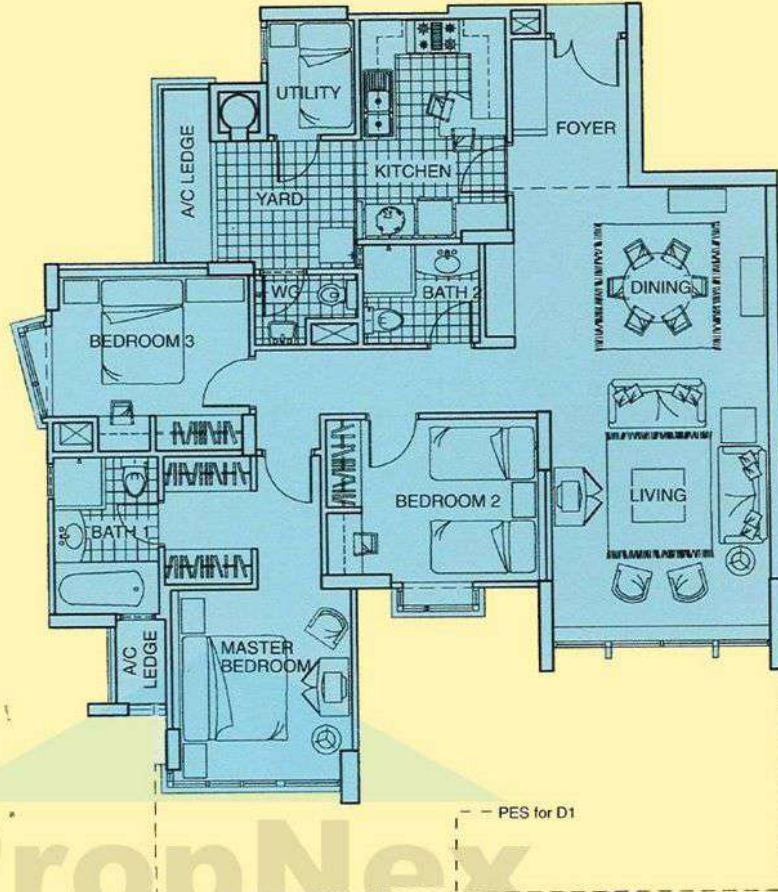
3 BEDROOMS

D3

125 sqm

Living/Dining	33 sqm
Kitchen	10 sqm
MBR	16 sqm
BR2	11 sqm
BR3	10 sqm

Note:
D1 - PES 40 sqm



PropNex

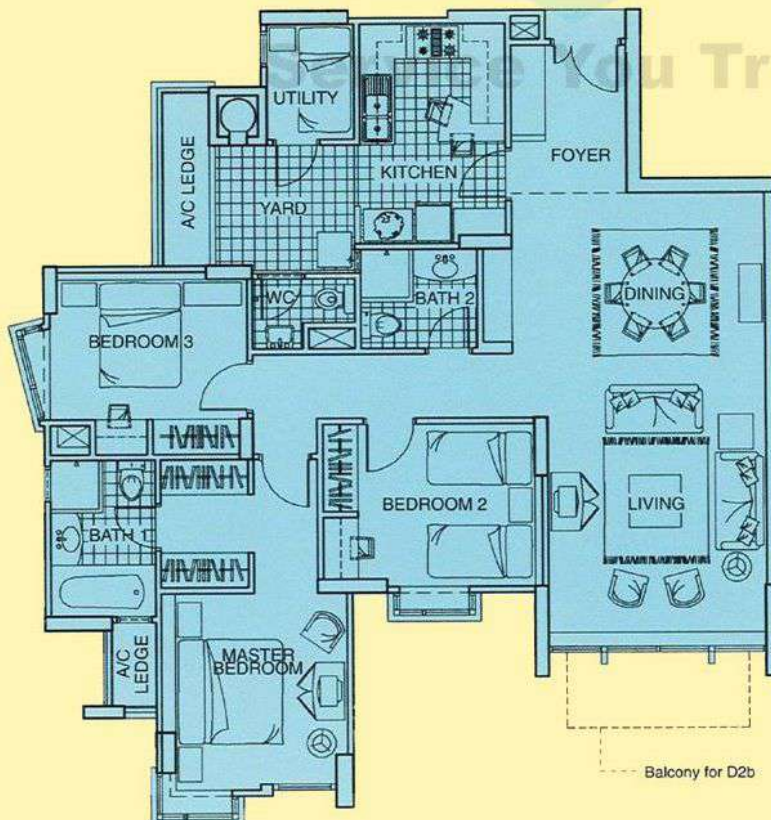
3 BEDROOMS

D2a

126 sqm

Living/Dining	33 sqm
Kitchen	10 sqm
MBR	17 sqm
BR2	11 sqm
BR3	10 sqm

Note:
D2b - Living bal. 4 sqm



Balcony for D2b

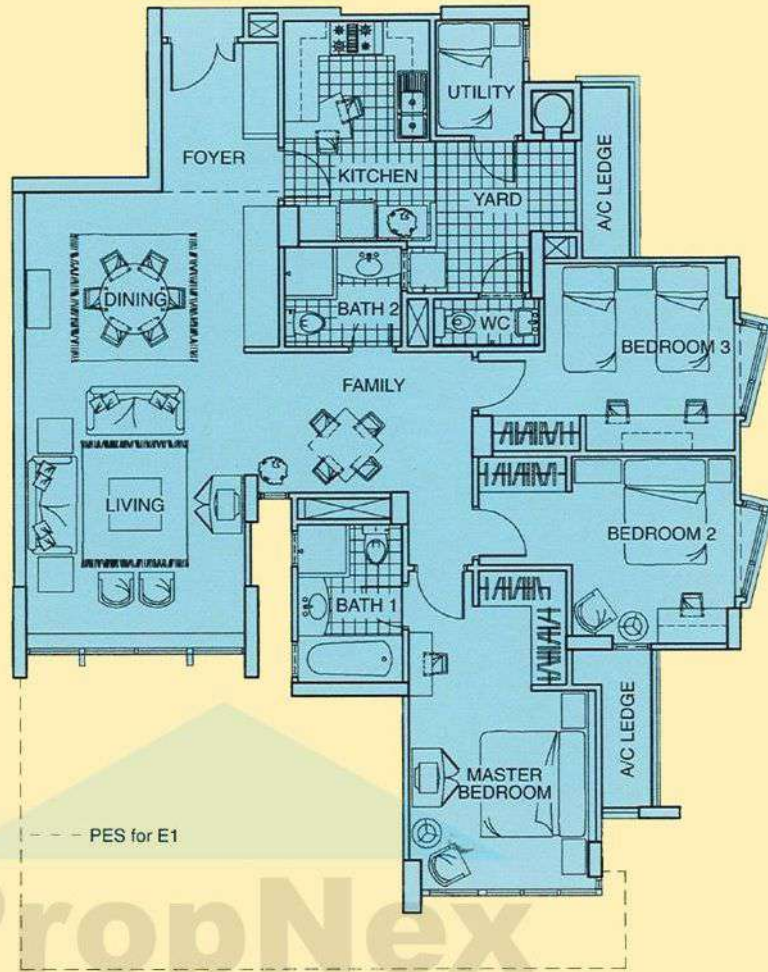
3 + 1 BEDROOMS

E6

134 sqm

Living/Dining	31 sqm
Kitchen	10 sqm
MBR	16 sqm
BR2	12 sqm
BR3	13 sqm
Family	9 sqm

Note:
E1 - PES 40 sqm



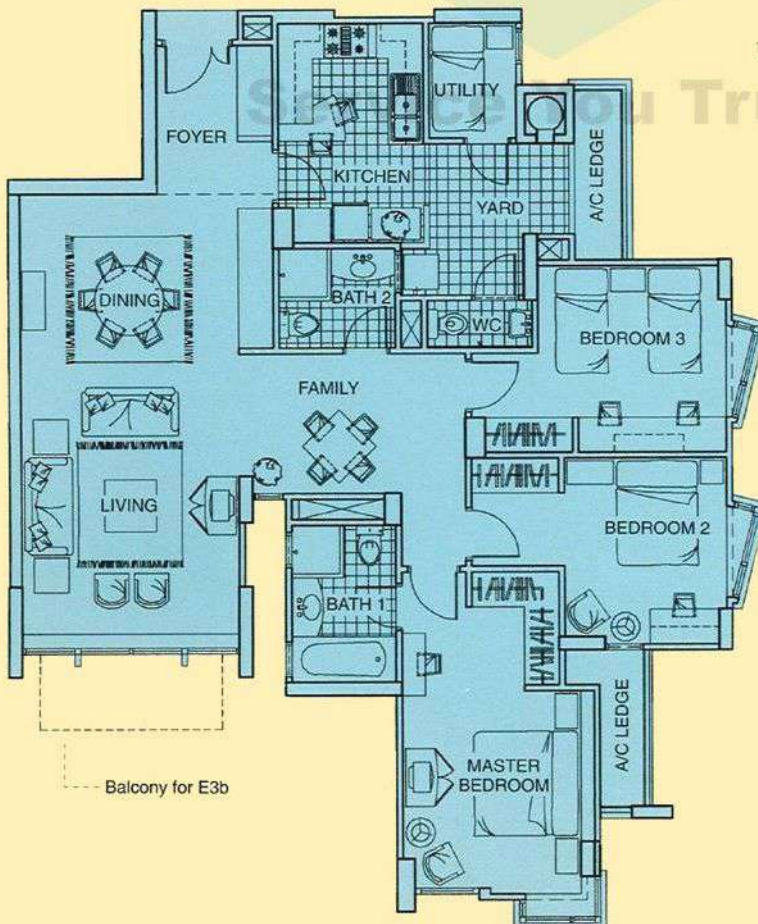
3 + 1 BEDROOMS

E3a

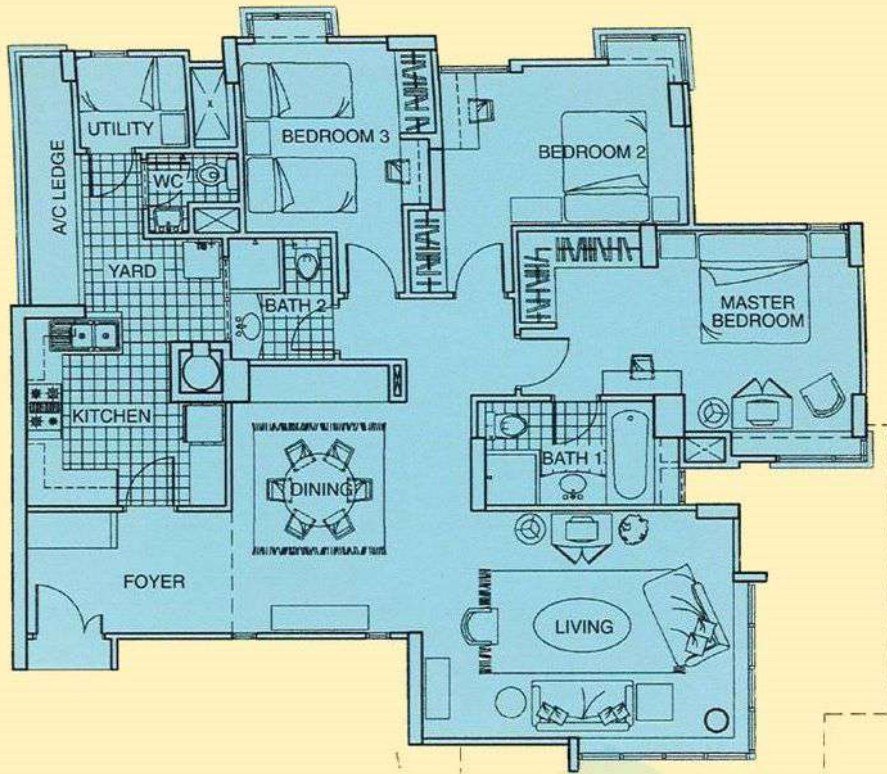
135 sqm

Living/Dining	31 sqm
Kitchen	10 sqm
MBR	17 sqm
BR2	12 sqm
BR3	13 sqm
Family	9 sqm

Note:
E3b - Living bal. 4 sqm



3 BEDROOMS



C2

130 sqm

Living/Dining	36 sqm
Kitchen	9 sqm
MBR	18 sqm
BR2	13 sqm
BR3	11 sqm

Note:
C1a - PES 40 sqm

PropNex

3 BEDROOMS

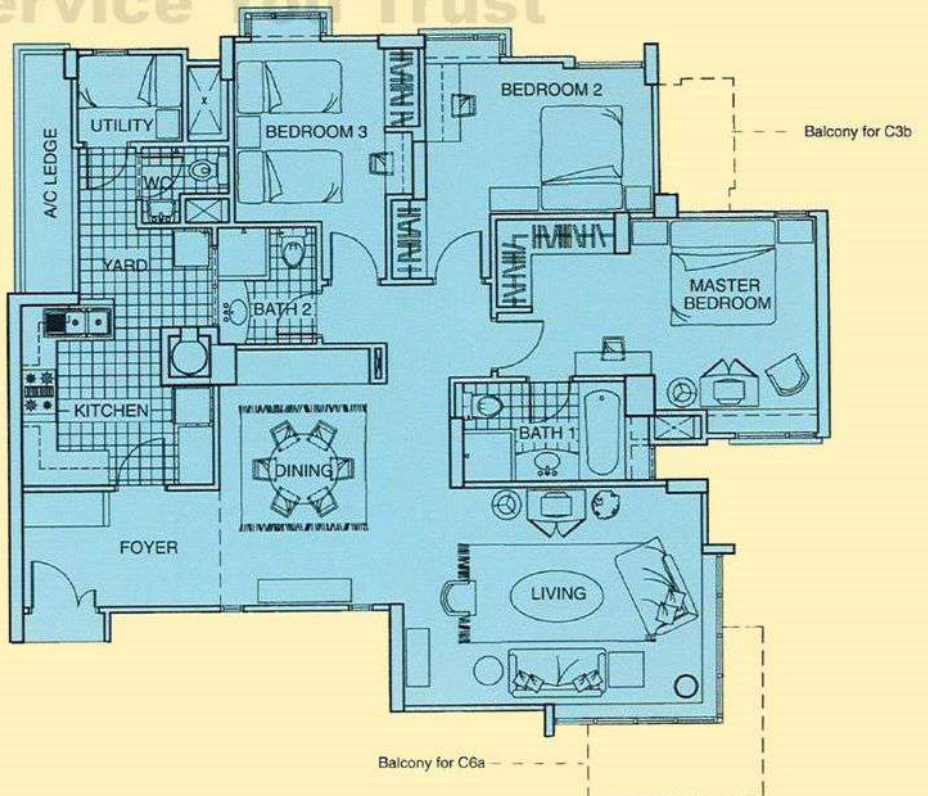
Service You Trust

C3a

131 sqm

Living/Dining	36 sqm
Kitchen	9 sqm
MBR	17 sqm
BR2	13 sqm
BR3	11 sqm

Note:
C3b - BR2 bal. 3 sqm
C6a - Living bal. 5 sqm



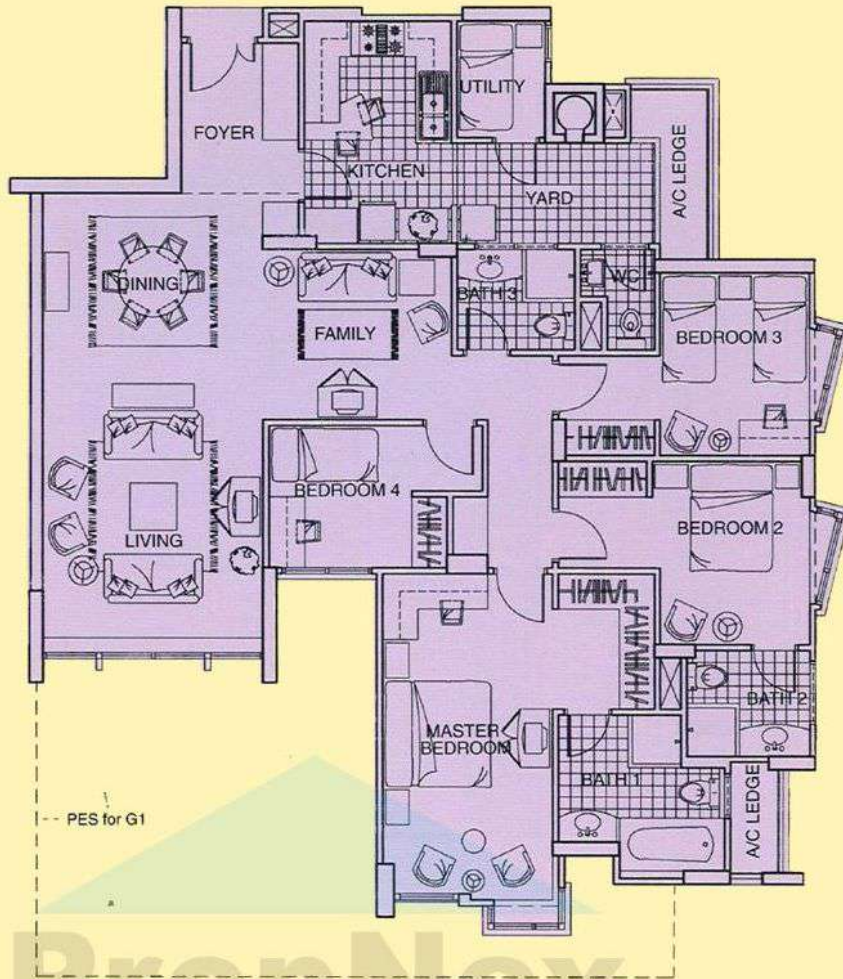
4 BEDROOMS

G2

153 sqm

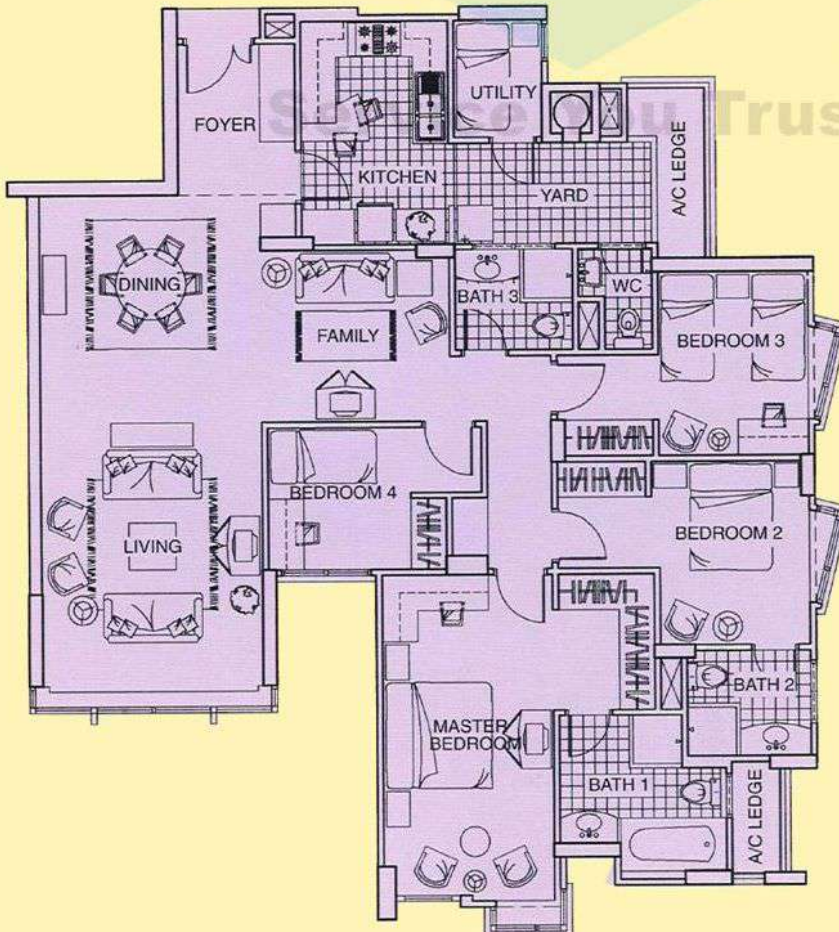
Living/Dining	30 sqm
Kitchen	10 sqm
MBR	20 sqm
BR2	11 sqm
BR3	11 sqm
BR4	8 sqm
Family	9 sqm

Note:
G1 - PES 40 sqm



PropNex

4 BEDROOMS



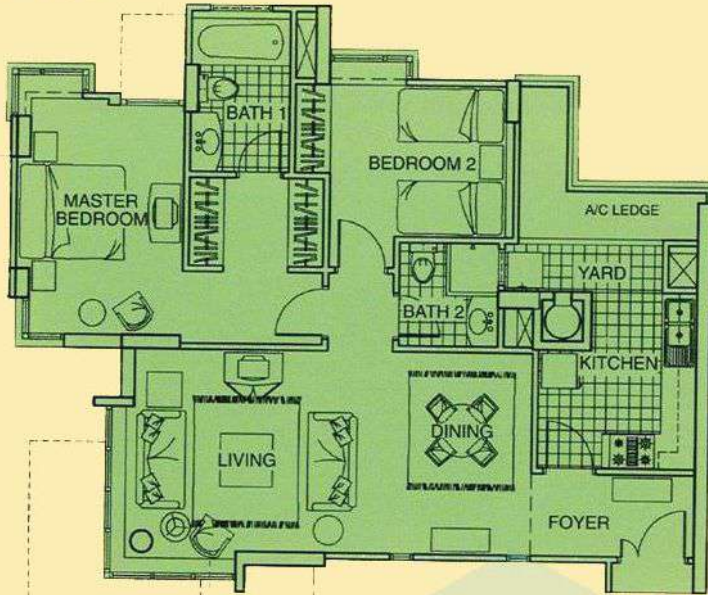
G3

157 sqm

Living/Dining	33 sqm
Kitchen	10 sqm
MBR	20 sqm
BR2	11 sqm
BR3	11 sqm
BR4	8 sqm
Family	9 sqm

2 BEDROOMS

Balcony for A4



A2

89 sqm

Living/Dining	25 sqm
Kitchen	7 sqm
MBR	18 sqm
BR2	10 sqm

Note:

A1 - PES	40 sqm
A4 - Living bal.	4 sqm
- MBR bal.	1 sqm

PES for A1

Balcony for A4

PropNex

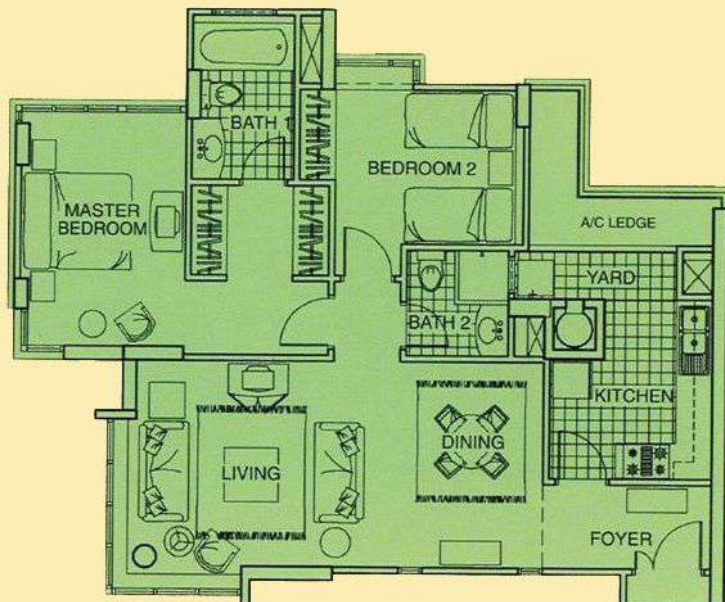
2 BEDROOMS

Service You Trust

A3

88 sqm

Living/Dining	25 sqm
Kitchen	7 sqm
MBR	17 sqm
BR2	10 sqm



4 BEDROOMS

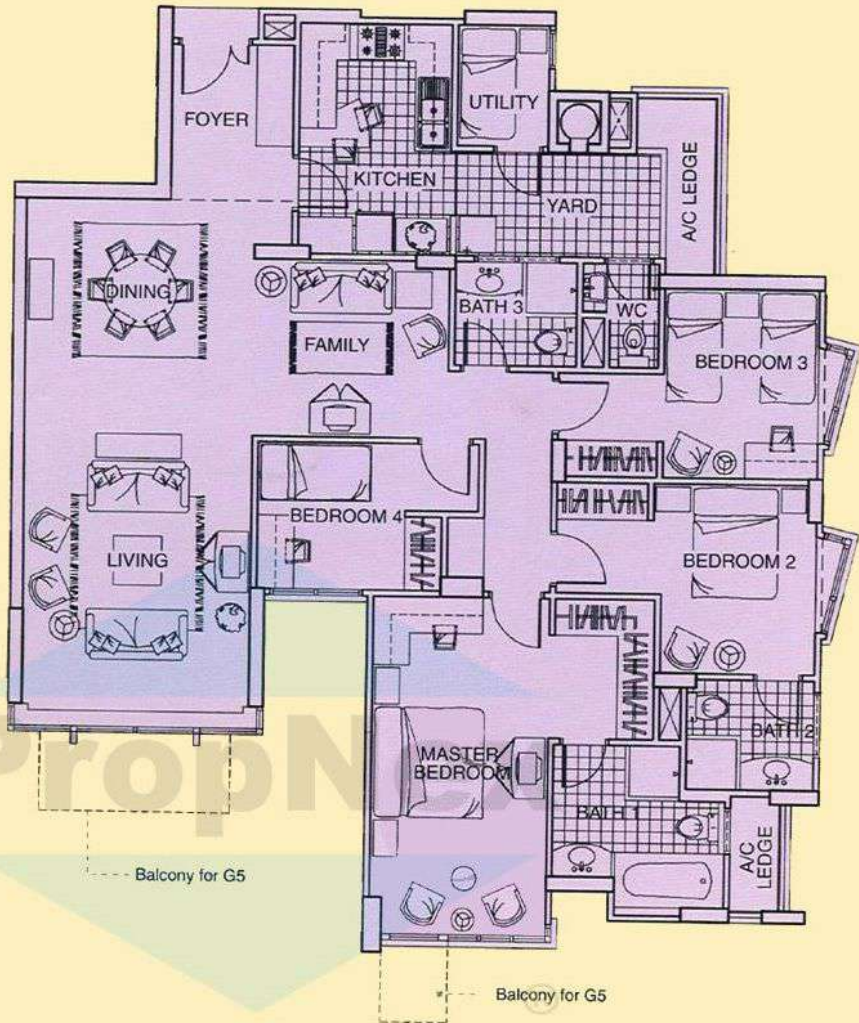
G4

156 sqm

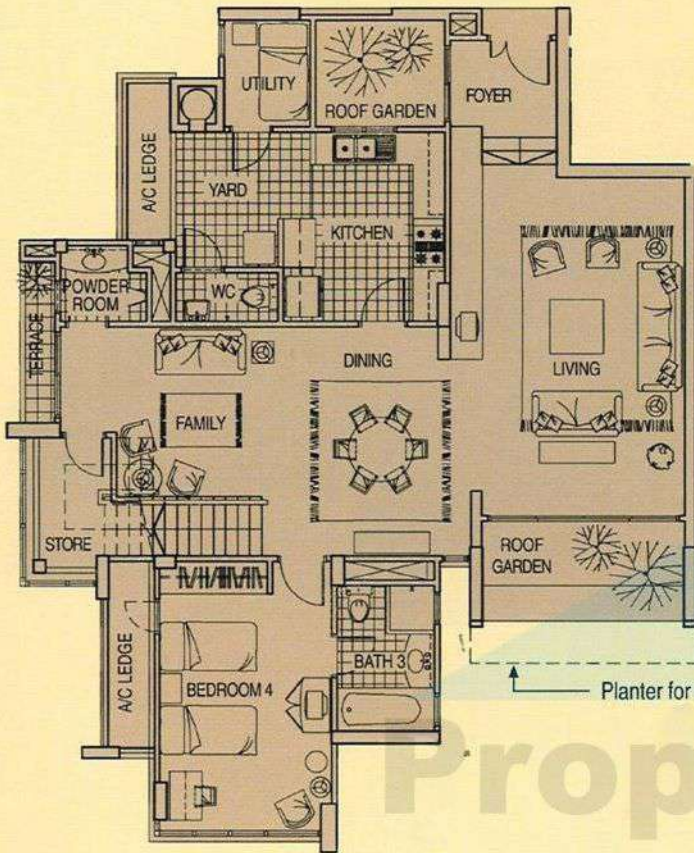
Living/Dining	33 sqm
Kitchen	10 sqm
MBR	20 sqm
BR2	11 sqm
BR3	11 sqm
BR4	8 sqm
Family	9 sqm

Note:

G5 - Living bal.	4 sqm
- MBR bal.	1 sqm



Service You Trust



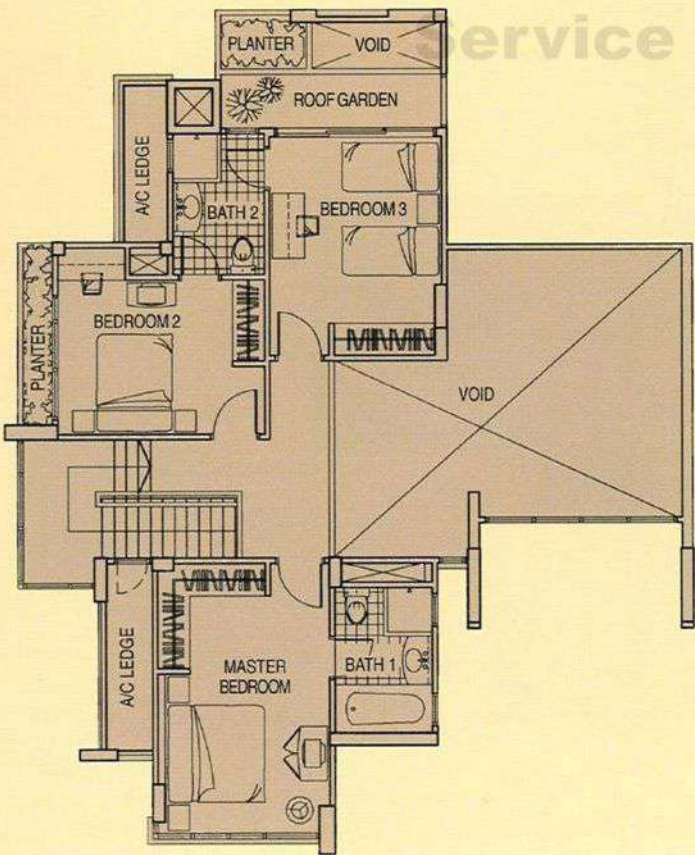
H4a lower

138 sqm

Living/Dining	36 sqm
Kitchen	10 sqm
BR4	16 sqm
Family	17 sqm
Terrace	2 sqm

PropNex

Service You Trust



H4a upper

120 sqm

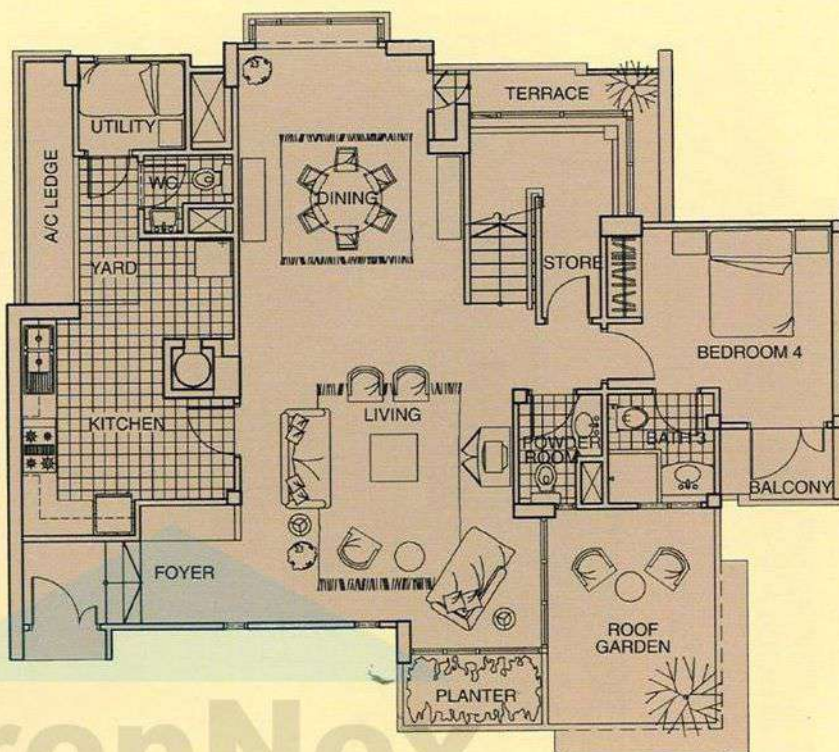
MBR	16 sqm
BR2	12 sqm
BR3	13 sqm

Note:
H4b - Planter 2 sqm

H2a lower

130 sqm

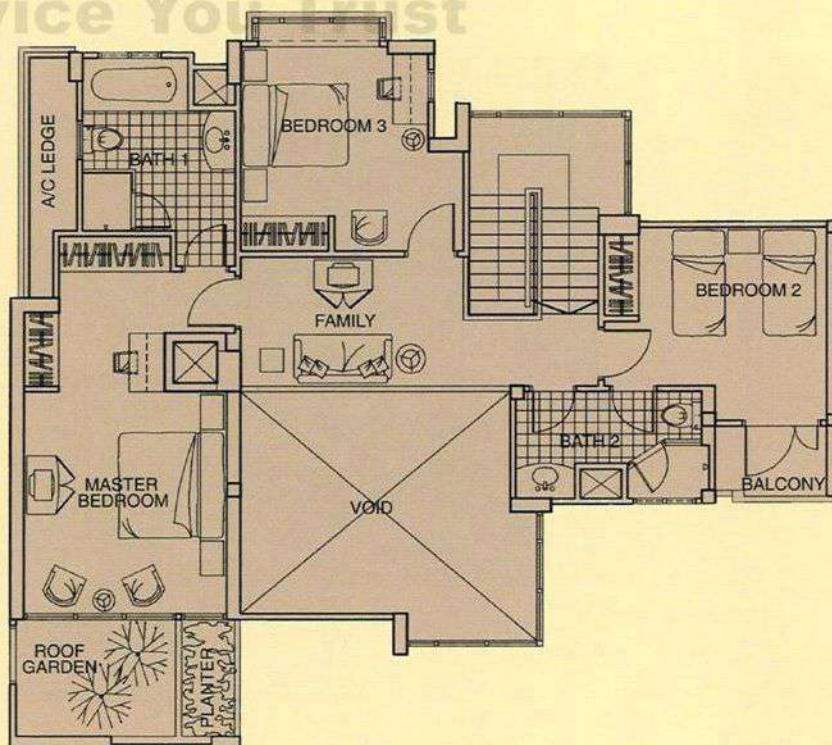
Living/Dining	42 sqm
Kitchen	13 sqm
BR4	11 sqm
Terrace	4 sqm
Balcony	2 sqm



H2a upper

119 sqm

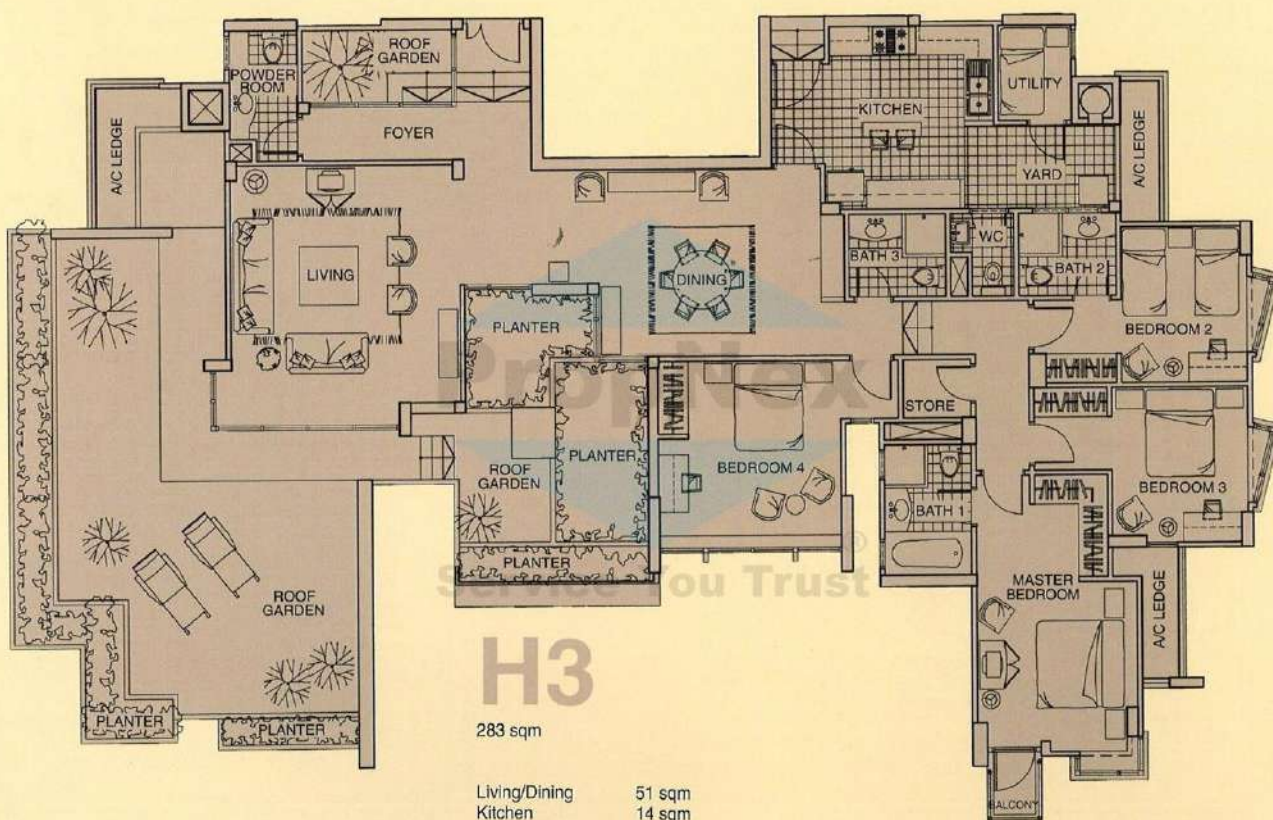
MBR	20 sqm
BR2	11 sqm
BR3	13 sqm
Family	8 sqm
Balcony	2 sqm



PropNex

Service You Trust

PENTHOUSES (Hse No.: 35)



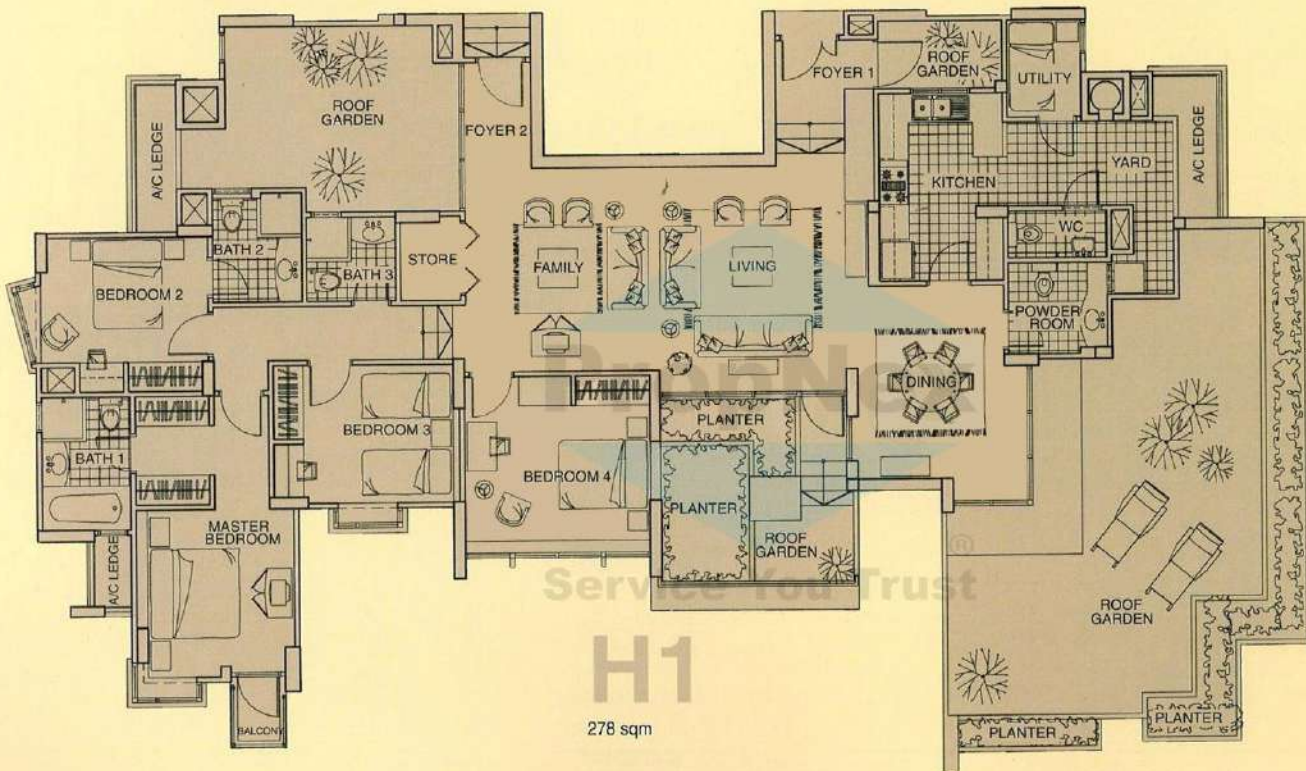
H3

283 sqm

Living/Dining	51 sqm
Kitchen	14 sqm
MBR	18 sqm
BR2	12 sqm
BR3	12 sqm
BR4	16 sqm
Balcony	1 sqm

Note: The planters in front of the living room are convertible to a reflective pool and jacuzzi, subject to building authorities' approval.

PENTHOUSES (Hse No.: 35)

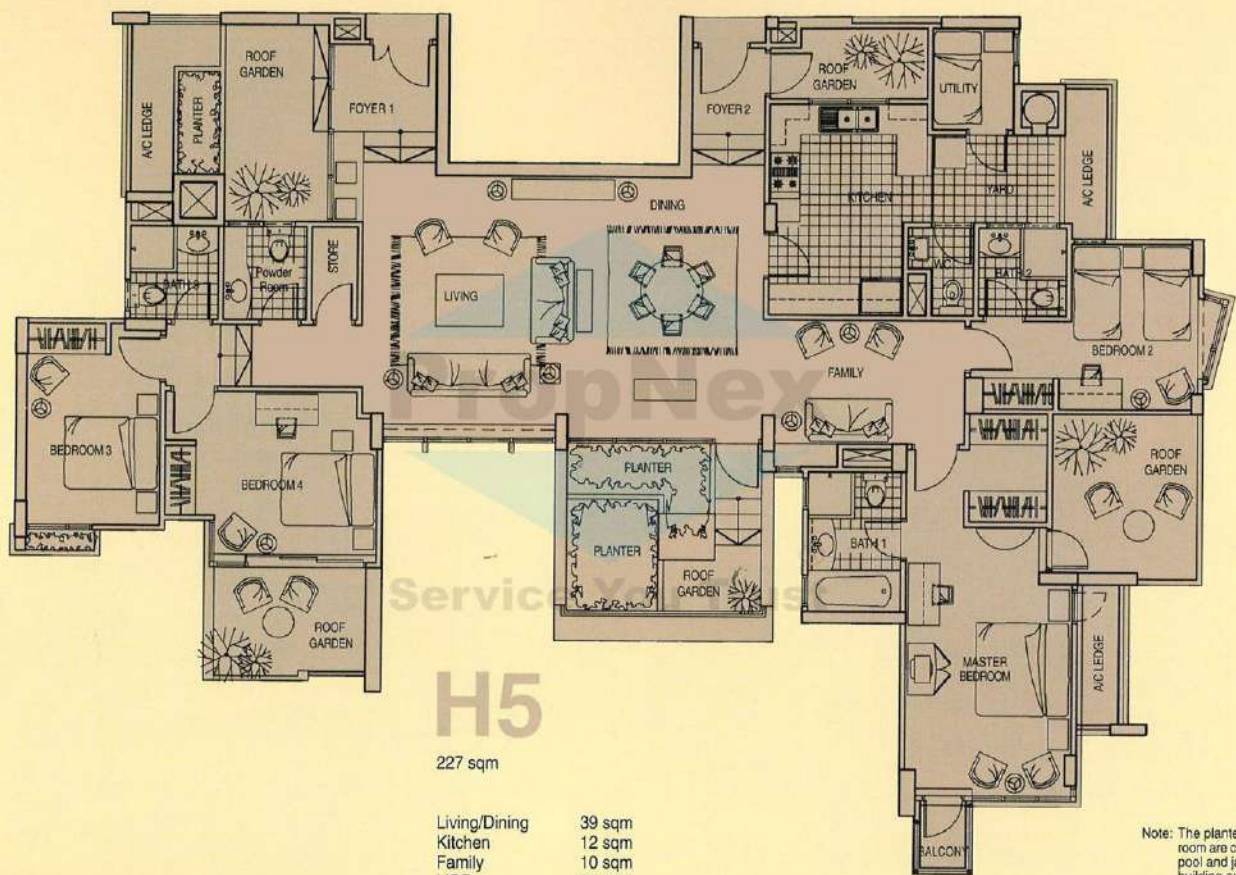


278 sqm

Living/Dining	33 sqm
Kitchen	10 sqm
MBR	17 sqm
BR2	10 sqm
BR3	11 sqm
BR4	14 sqm
Family	16 sqm
Balcony	1 sqm

Note: The planters in front of the living room are convertible to a reflective pool and jacuzzi, subject to building authorities' approval.

PENTHOUSES (Hse No.: 37)

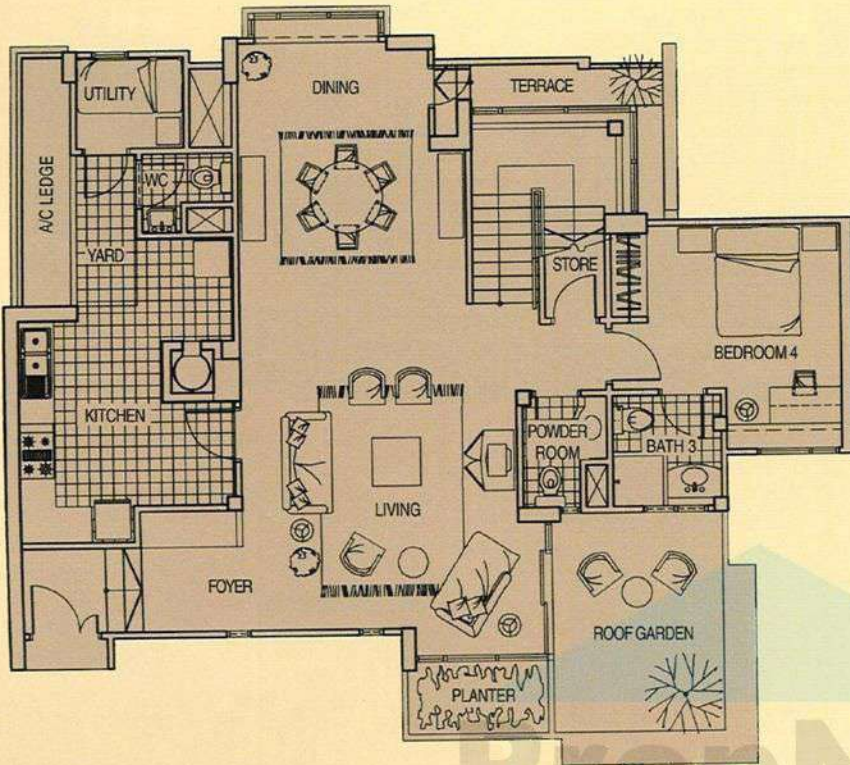


H5

227 sqm

Living/Dining	39 sqm
Kitchen	12 sqm
Family	10 sqm
MBR	21 sqm
BR2	11 sqm
BR3	10 sqm
BR4	13 sqm
Balcony	1 sqm

Note: The planters in front of the living room are convertible to a reflective pool and jacuzzi, subject to building authorities' approval.



H2b lower

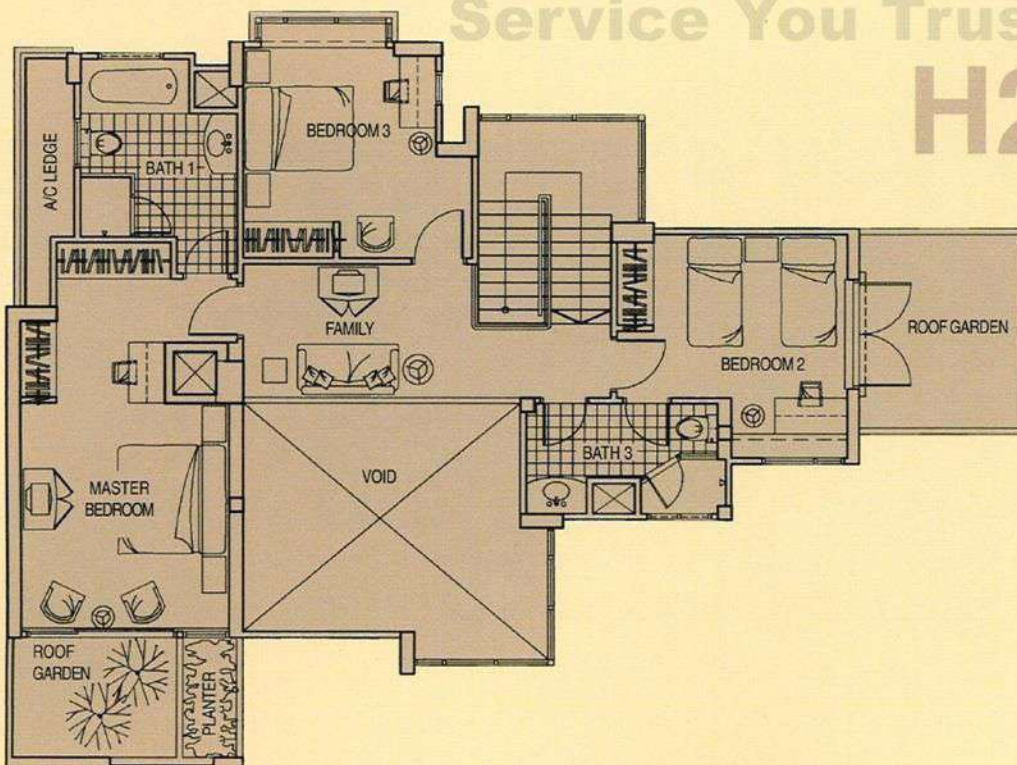
130 sqm

Living/Dining	42 sqm
Kitchen	13 sqm
BR4	12 sqm
Terrace	4 sqm

PropNex

Service You Trust

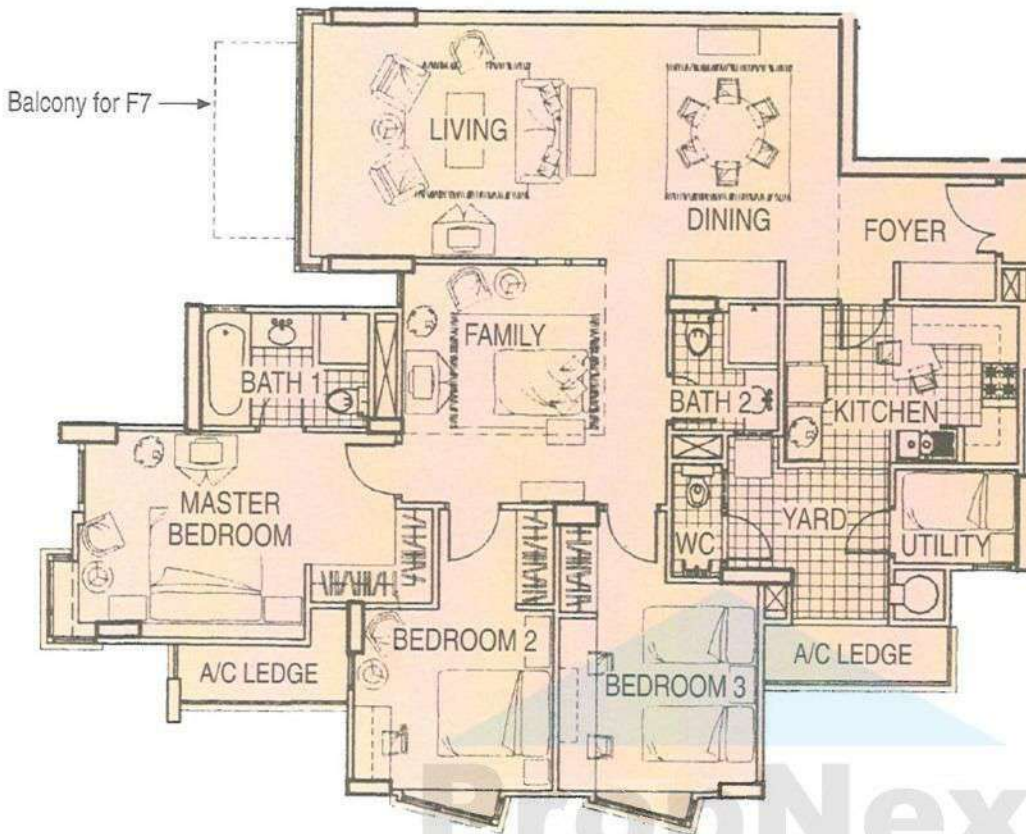
H2b upper



128 sqm

Family	8 sqm
MBR	20 sqm
BR2	12 sqm
BR3	13 sqm

3+1 BEDROOMS

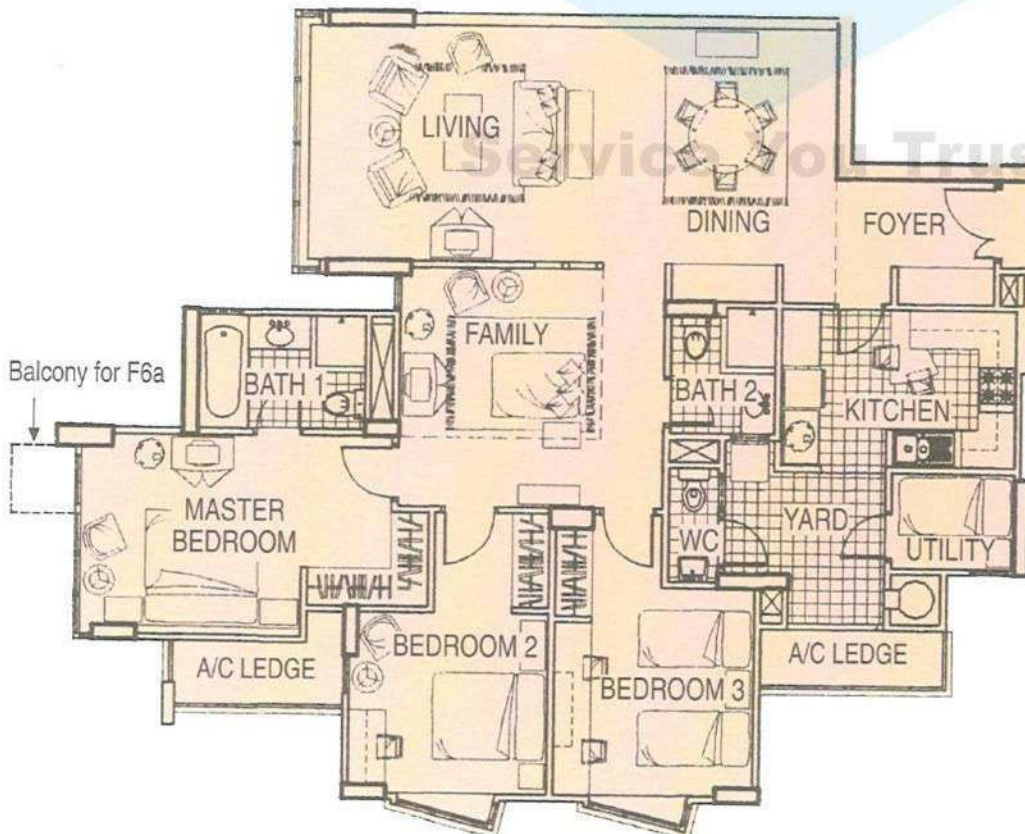


F4

145 sqm

Living/Dining	34 sqm
Kitchen	10 sqm
Family	16 sqm
MBR	17 sqm
BR2	13 sqm
BR3	13 sqm

Note:
F7 - Living bal. 4 sqm

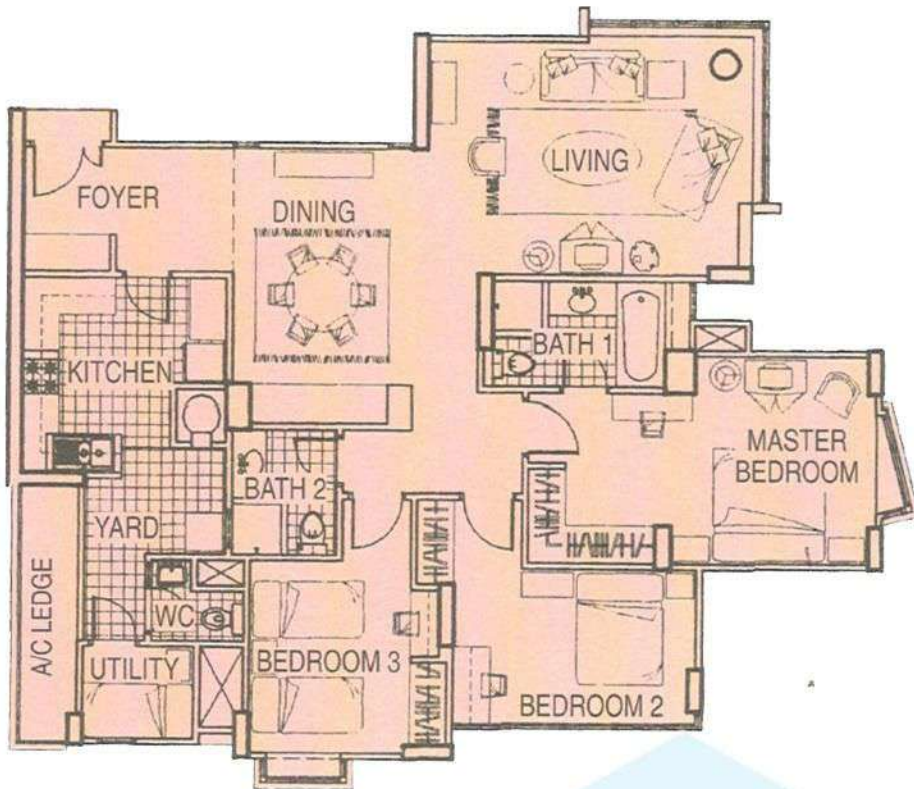


F6b

144 sqm

Living/Dining	34 sqm
Kitchen	10 sqm
Family	16 sqm
MBR	16 sqm
BR2	13 sqm
BR3	13 sqm

Note:
F6a - MBR bal. 1 sqm



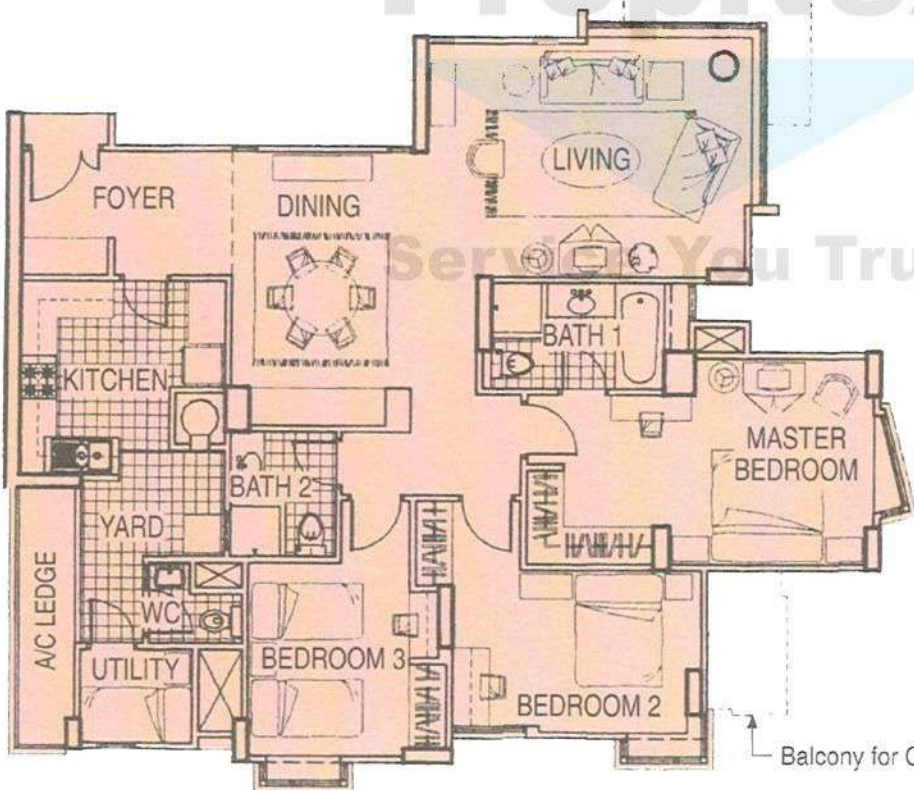
C4

130 sqm

Living/Dining	36 sqm
Kitchen	9 sqm
MBR	17 sqm
BR2	12 sqm
BR3	11 sqm

PropNex

Balcony for C7



C5

131 sqm

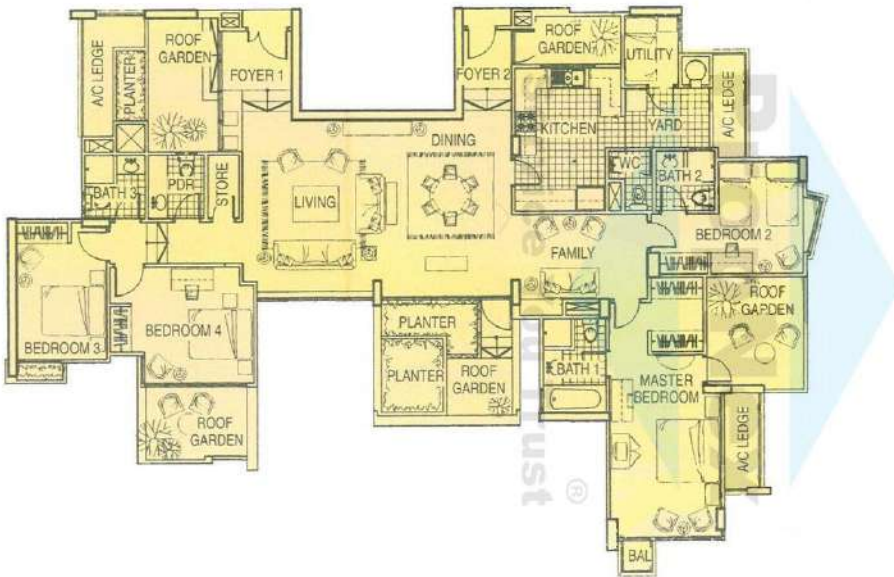
Living/Dining	36 sqm
Kitchen	9 sqm
MBR	17 sqm
BR2	13 sqm
BR3	11 sqm

Note:

C7 - Living bal.	4 sqm
- BR2 bal.	3 sqm

Balcony for C7

3+1 BEDROOMS



H5

227 sqm

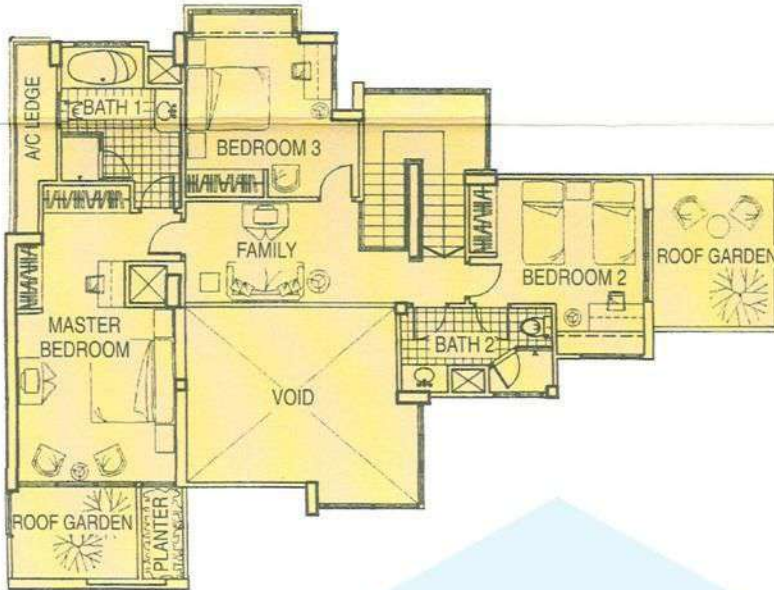
Living/Dining	39 sqm
Kitchen	12 sqm
Family	10 sqm
MBR	21 sqm
BR2	11 sqm
BR3	10 sqm
BR4	13 sqm
Garden	37 sqm
Planters	6 sqm
Balcony	1 sqm

Note: The planters in front of the living room are convertible to a reflective pool and jacuzzi, subject to building authorities' approval.

PENTHOUSES

H2b

258 sqm

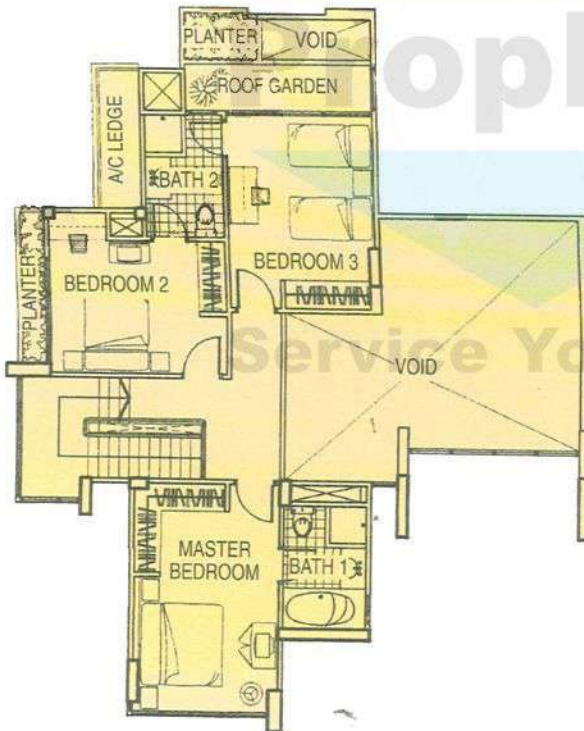


UPPER FLOOR

Lower Floor	
Living/Dining	42 sqm
Kitchen	13 sqm
BR4	12 sqm

Upper Floor	
Family	8 sqm
MBR	20 sqm
BR2	12 sqm
BR3	13 sqm

Garden	28 sqm
Terrace	4 sqm
Planters	5 sqm



UPPER FLOOR

H4a

255 sqm

Lower Floor	
Living/Dining	36 sqm
Kitchen	10 sqm
Family	17 sqm
BR4	16 sqm

Upper Floor	
MBR	16 sqm
BR2	12 sqm
BR3	13 sqm

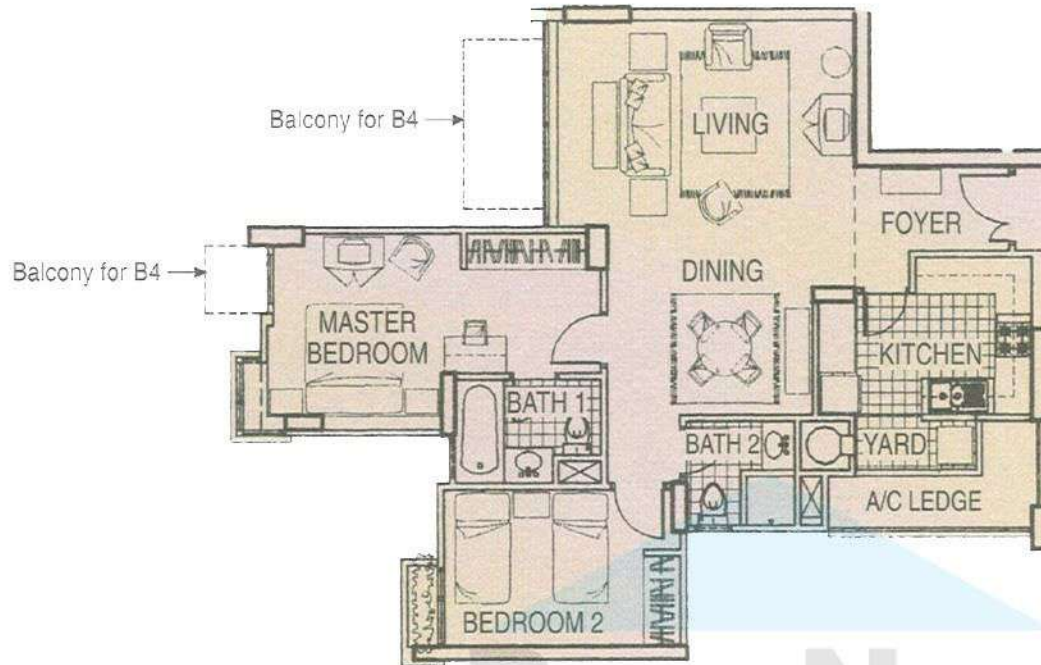
Garden	17 sqm
Terrace	2 sqm
Planters	4 sqm

Note:
H4b - Planter 2 sqm

opNex

Service You Trust

2 BEDROOMS



B2

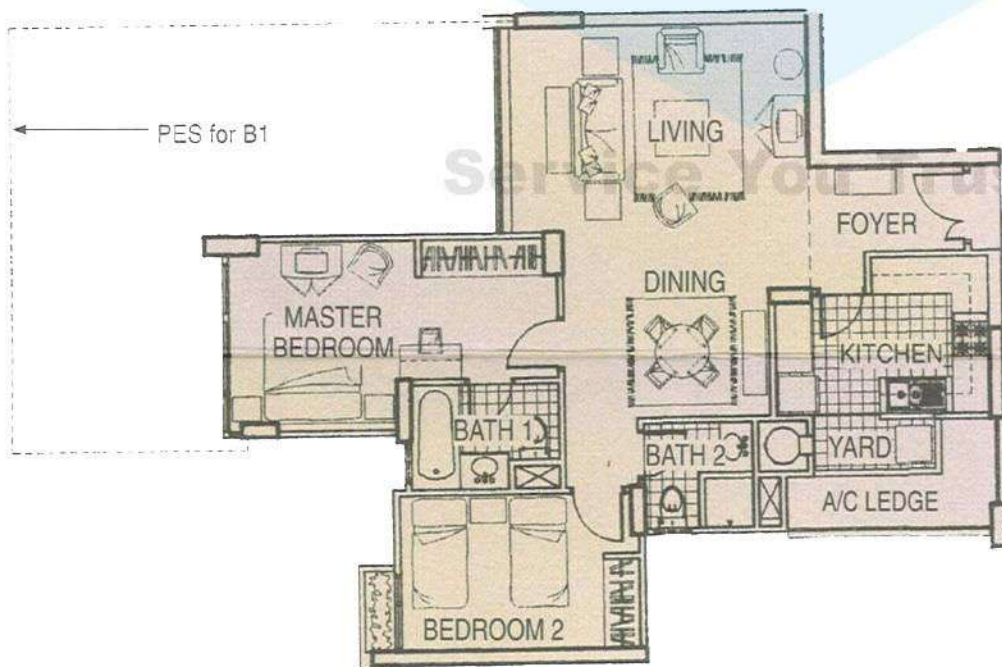
90sqm

Living/Dining	28 sqm
Kitchen	8 sqm
MBR	15 sqm
BR2	10 sqm

Note:

B4 - Living bal.	3 sqm
- MBR bal.	1 sqm

PropNex



B3

89 sqm

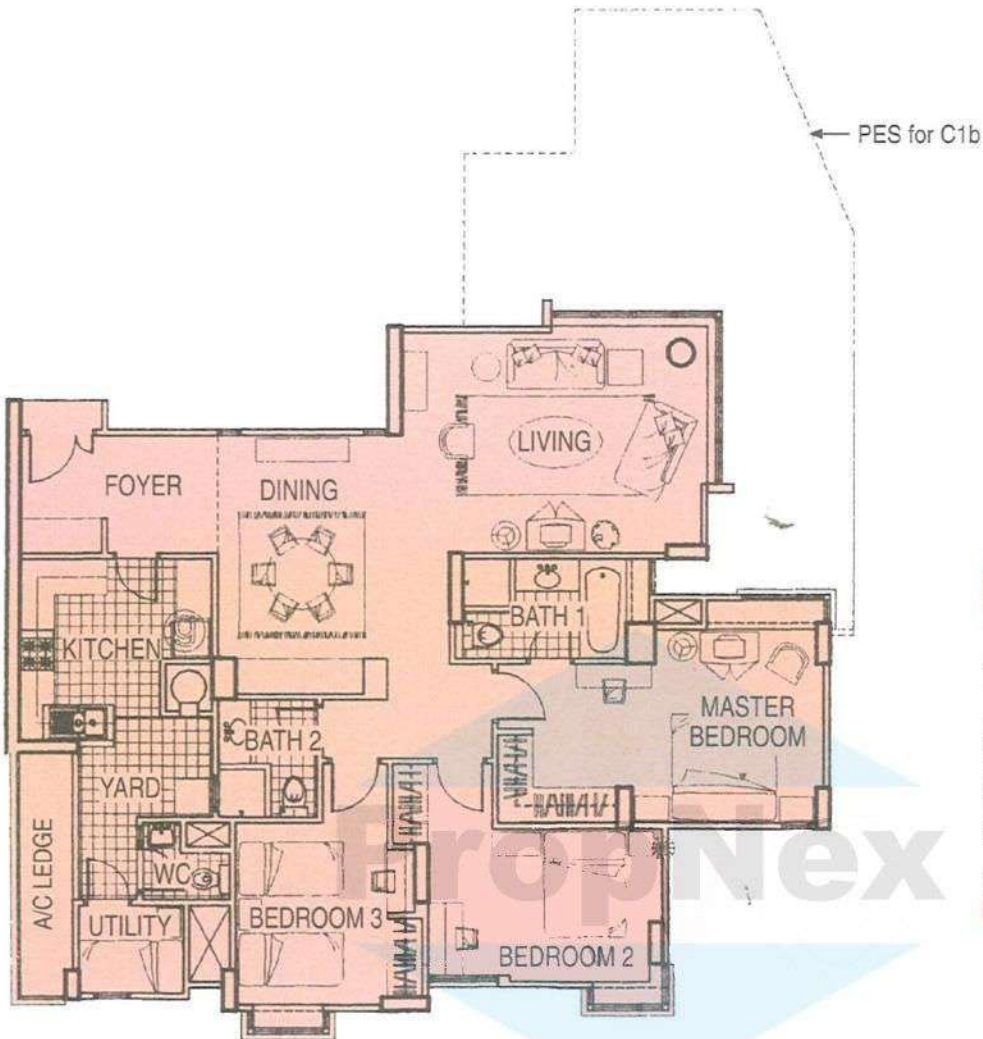
Living/Dining	28 sqm
Kitchen	8 sqm
MBR	14 sqm
BR2	10 sqm

Note:

B1 - PES	40 sqm
----------	--------

3 BEDROOMS

3 BEDROOMS



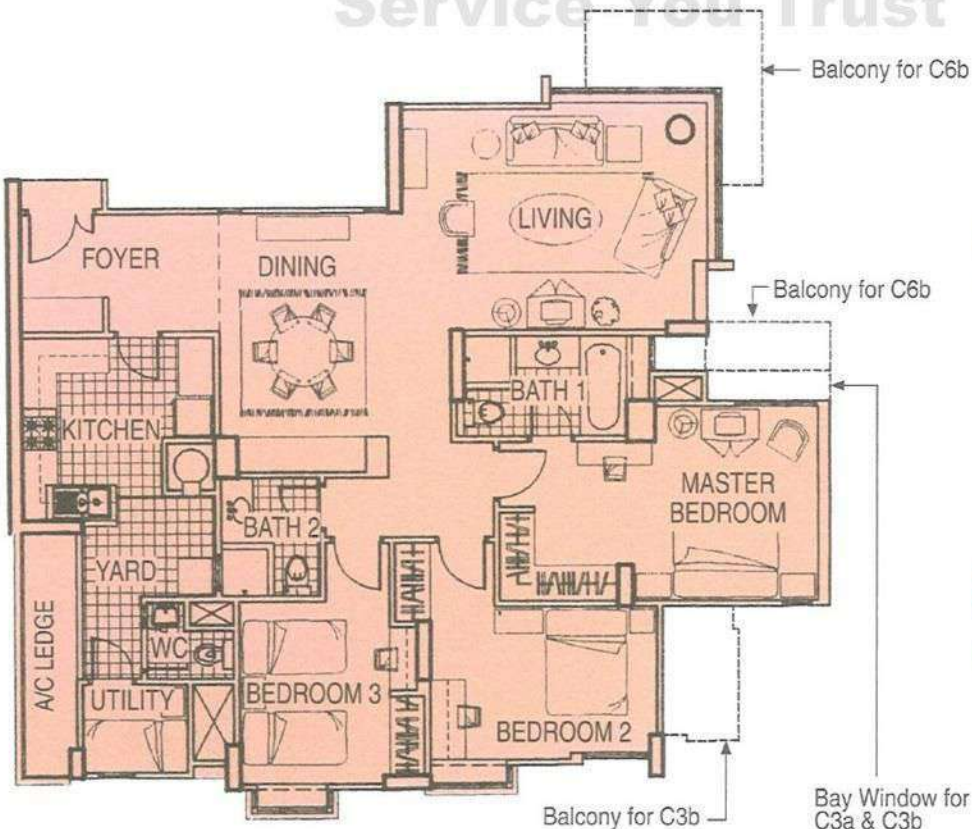
C2

130 sqm

Living/Dining	36 sqm
Kitchen	9 sqm
MBR	18 sqm
BR2	13 sqm
BR3	11 sqm

Note:
C1b - PES 40 sqm

Service You Trust[®]



C3

130 sqm

Living/Dining	36 sqm
Kitchen	9 sqm
MBR	17 sqm
BR2	13 sqm
BR3	11 sqm

Note:
C3a - MBR bay window 1 sqm
C3b - MBR bay window 1 sqm
- BR2 bal. 3 sqm
C6b - Living bal. 5 sqm
- MBR bal. 2 sqm