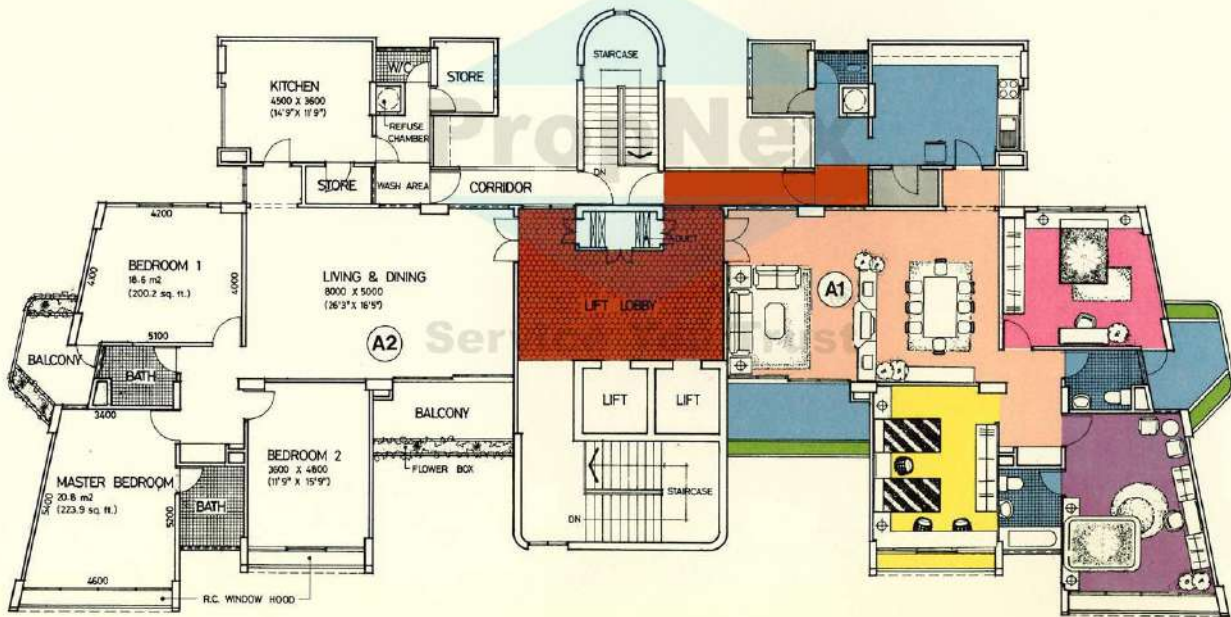


Typical Storey Plan (11 Storey Block)



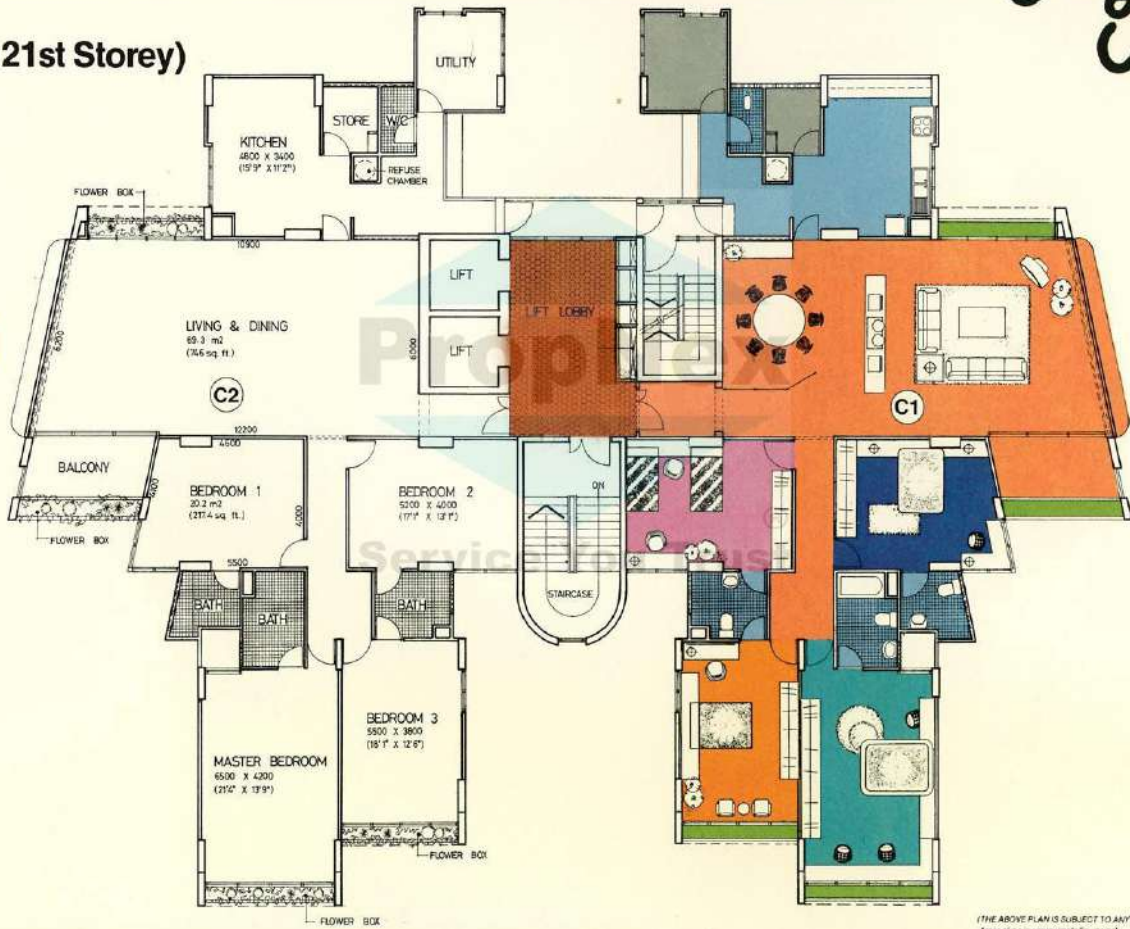
(2nd to 11th Storey)



Typical Storey Plan (21 Storey Block)



(12th to 21st Storey)

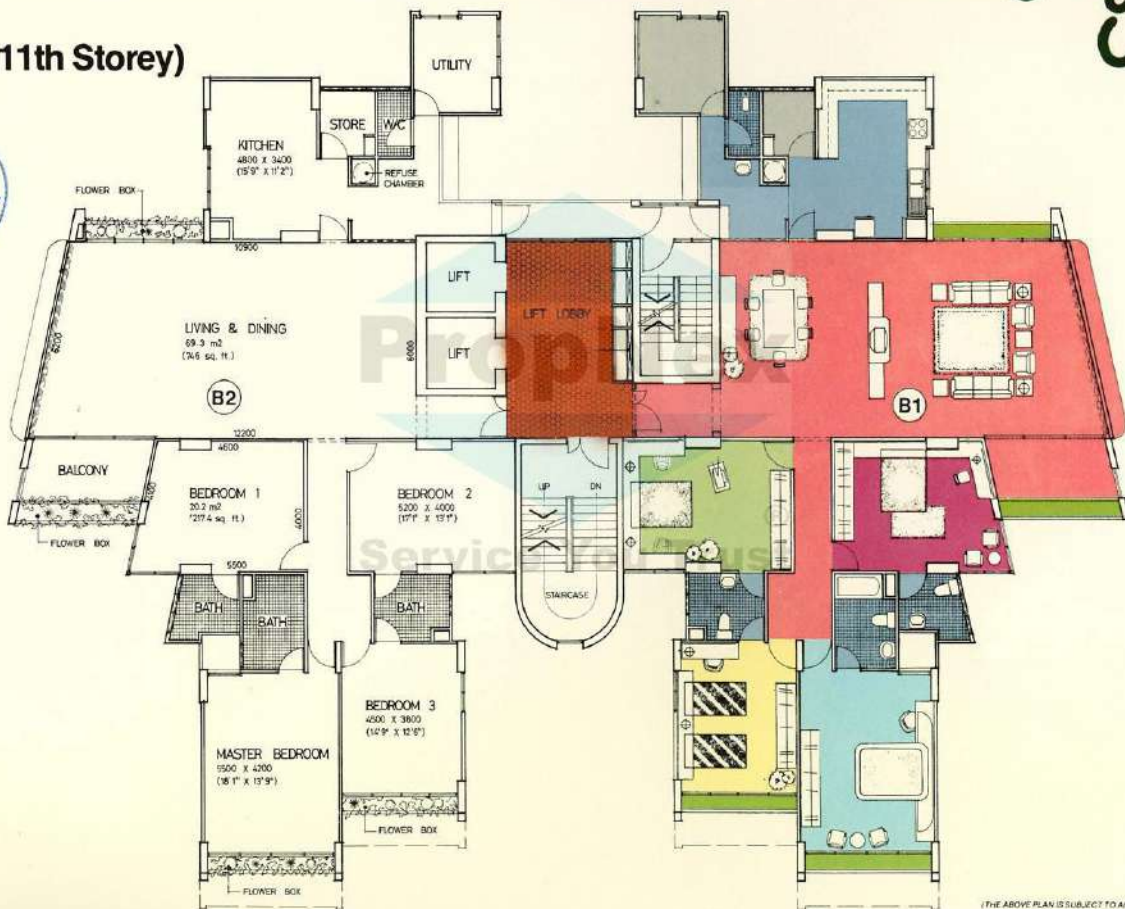


(THE ABOVE PLAN IS SUBJECT TO ANY AMENDMENT APPROVED BY THE BUILDING AUTHORITY
Areas given in approximate figures only)

Typical Storey Plan (21 Storey Block)

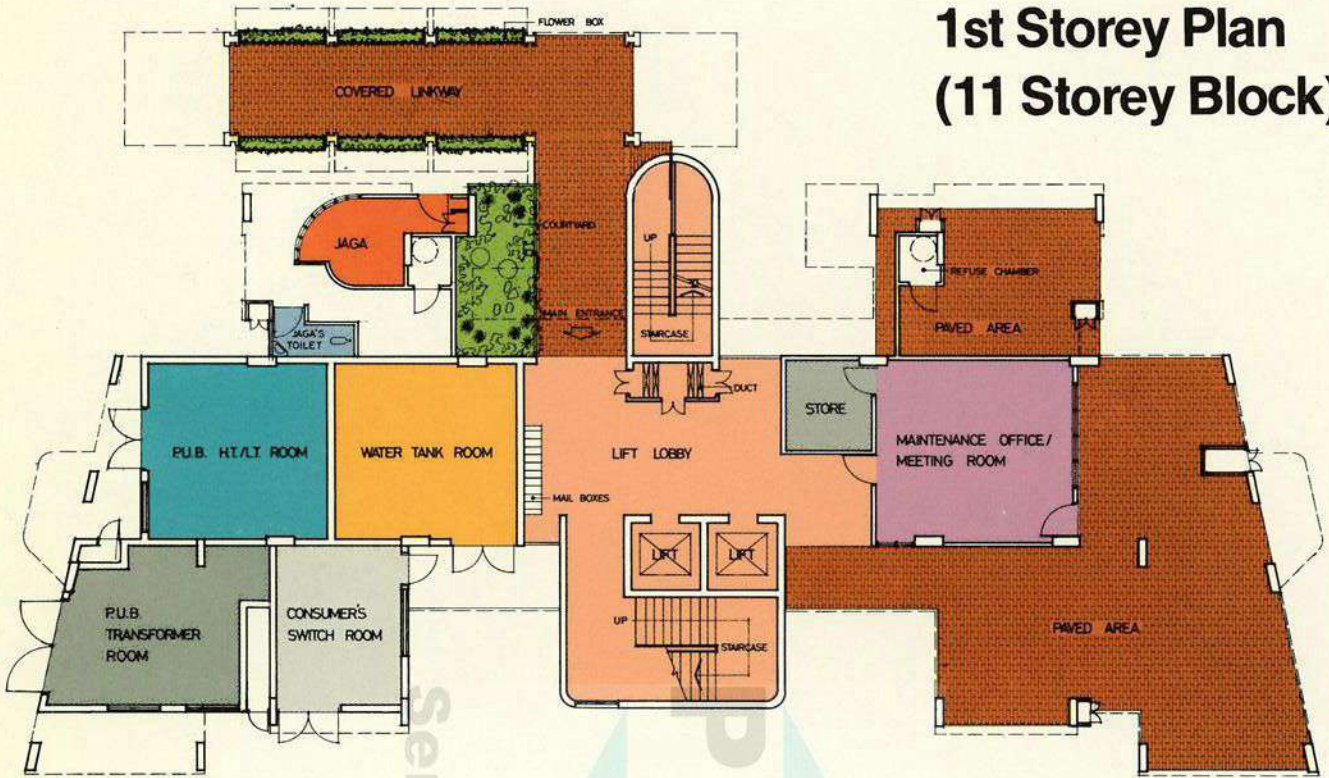


(2nd to 11th Storey)



(THE ABOVE PLAN IS SUBJECT TO ANY AMENDMENT APPROVED BY THE BUILDING AUTHORITY)
Areas given in approximate figures only.

1st Storey Plan (11 Storey Block)



1st Storey Plan (21 Storey Block)

