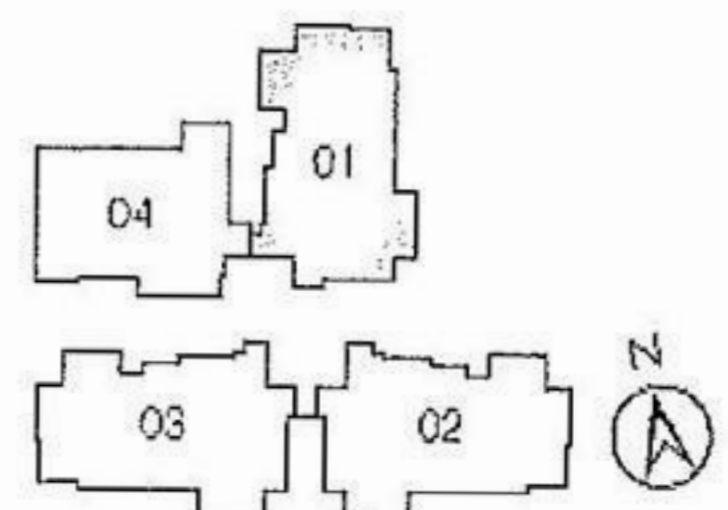
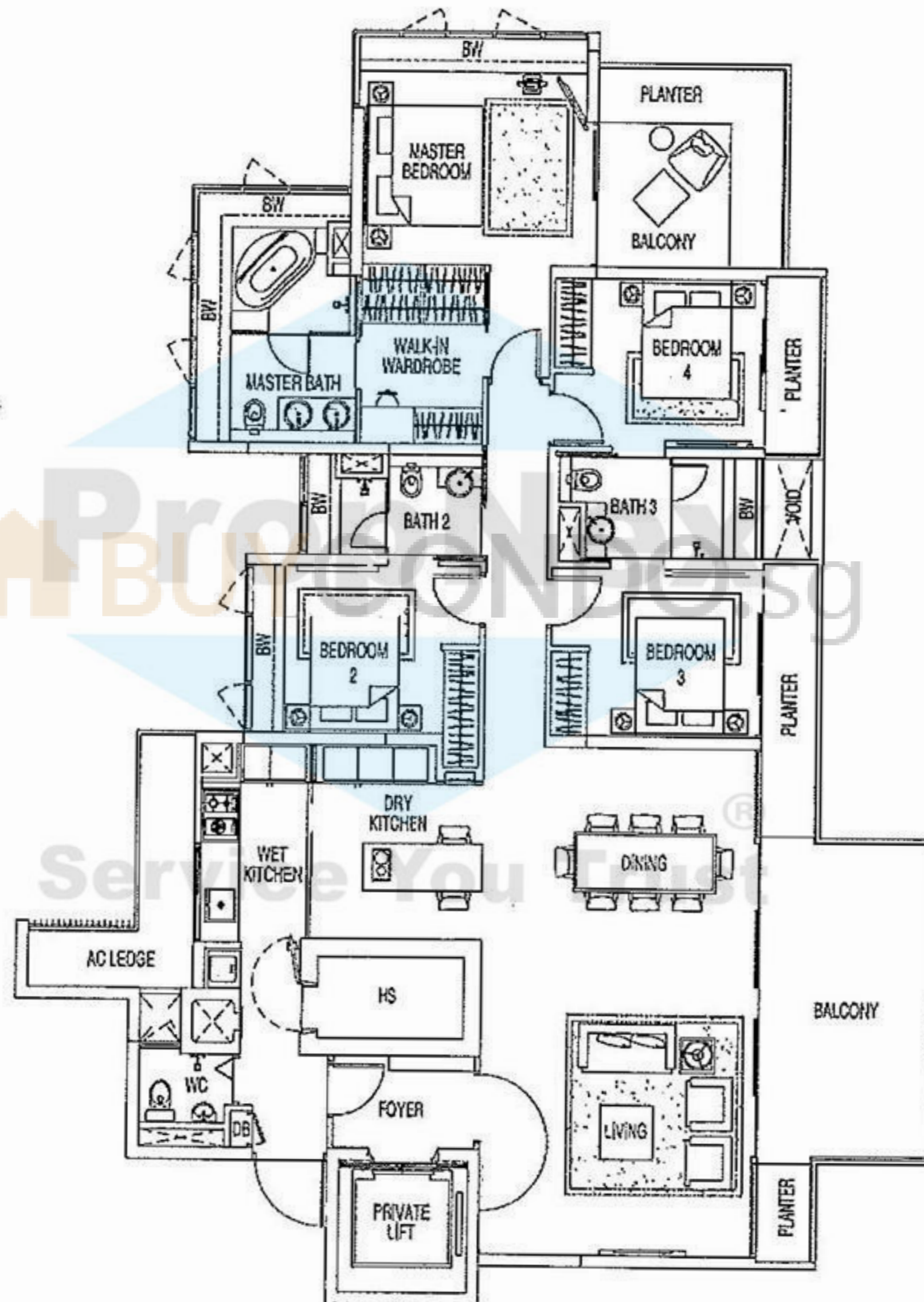


MEIER SUITES

Type A1 4 Bedroom Executive Suite

207 sqm (2,228 sf)
6th to 17th storey: 01

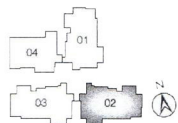
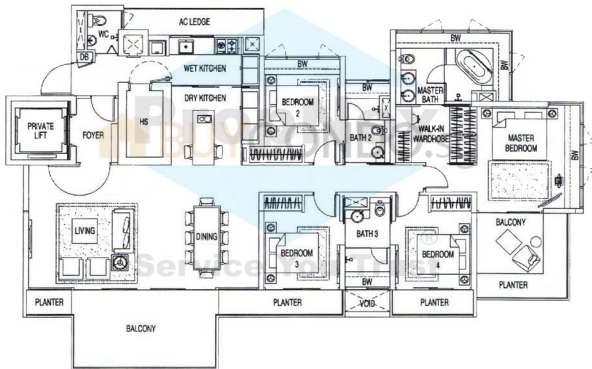


The plans are subject to change as may be required or approved by the relevant authorities. These are not drawn to scale and are solely for the purpose of visual representation of the different layouts that are available. Areas are estimates only and are subject to final survey.

MEIER SUITES

Type A2 4 Bedroom Executive Suite

205 sqm (2,207 sf)
6th to 17th storey: 02

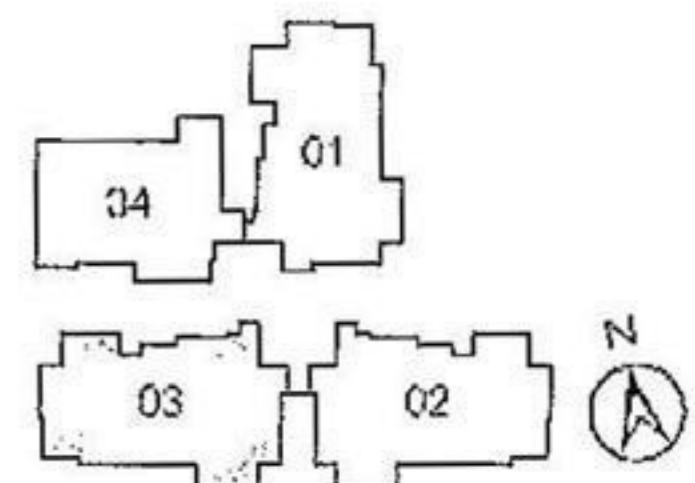
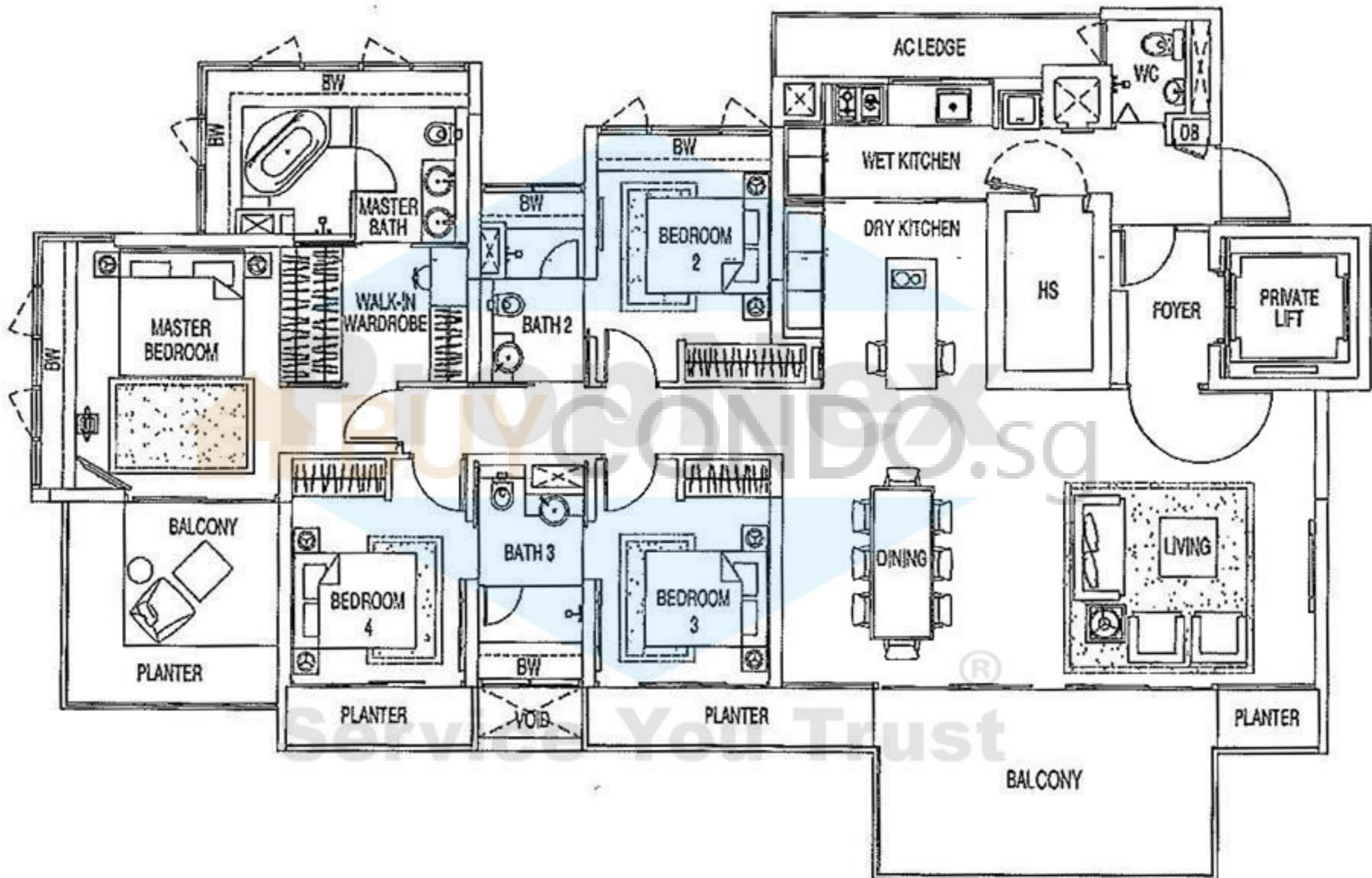


The plans are subject to change as may be required or approved by the relevant authorities. These are not drawn to scale and are solely for the purpose of visual representation of the different layouts that are available. Areas are estimates only and are subject to final survey.

MEIER SUITES

Type A3 4 Bedroom Executive Suite

205 sqm (2,207 sf)
6th to 17th storey: 03

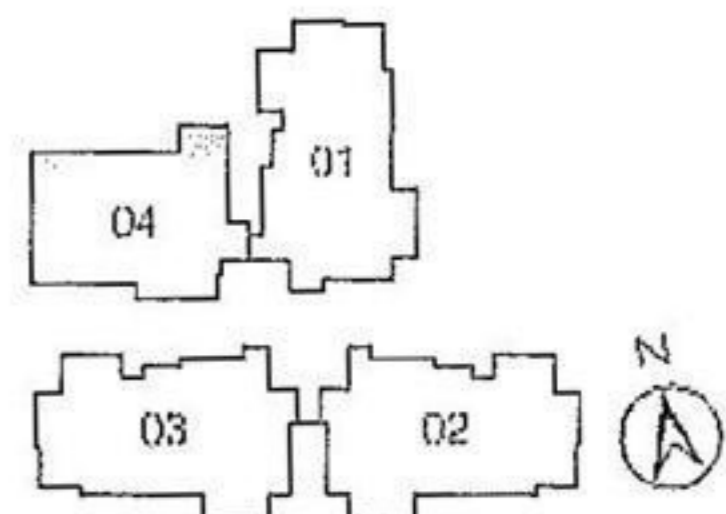
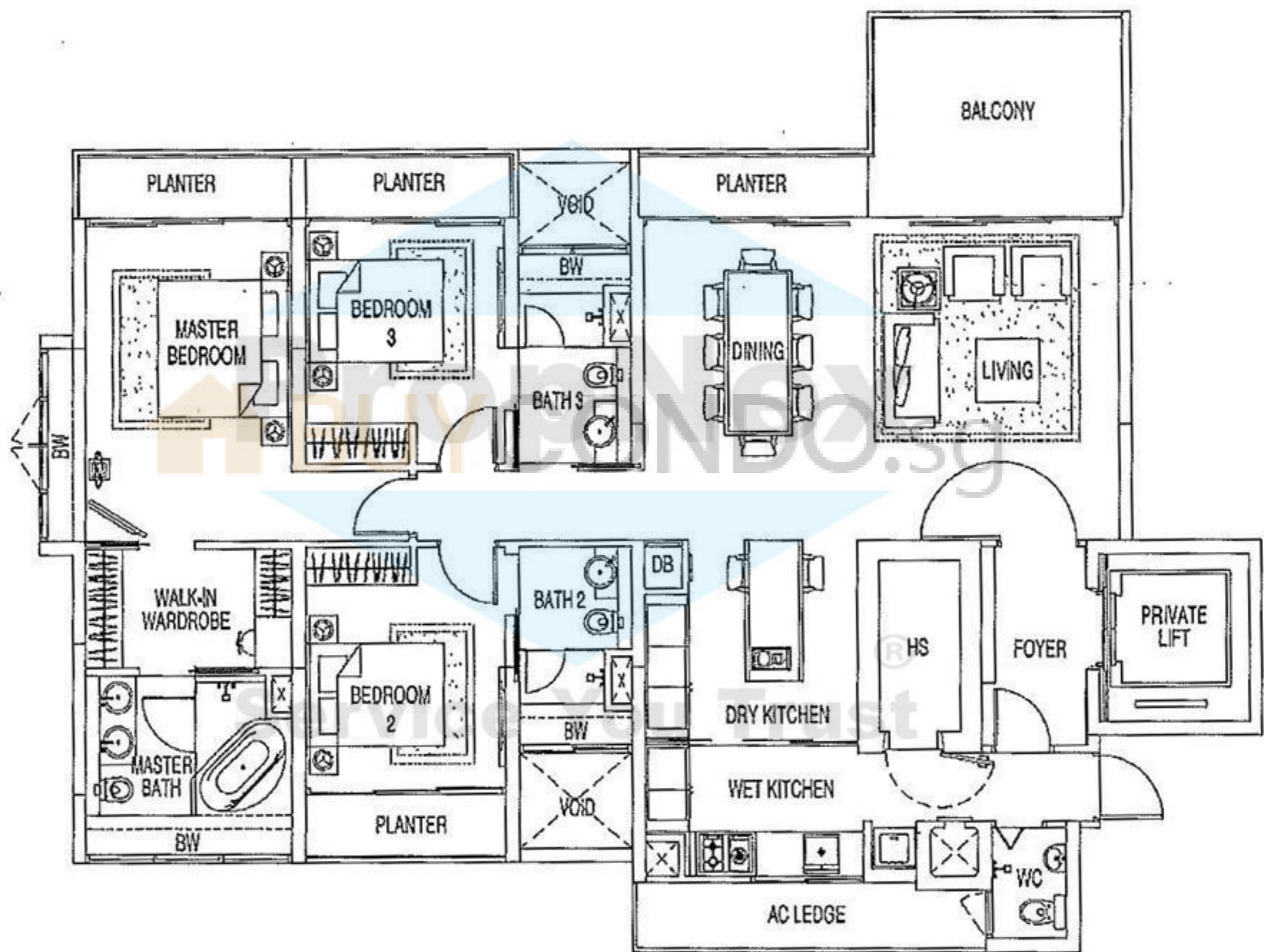


The plans are subject to change as may be required or approved by the relevant authorities. These are not drawn to scale and are solely for the purpose of visual representation of the different layouts that are available. Areas are estimates only and are subject to final survey.

MEIER SUITES

Type B1 3 Bedroom Junior Suite

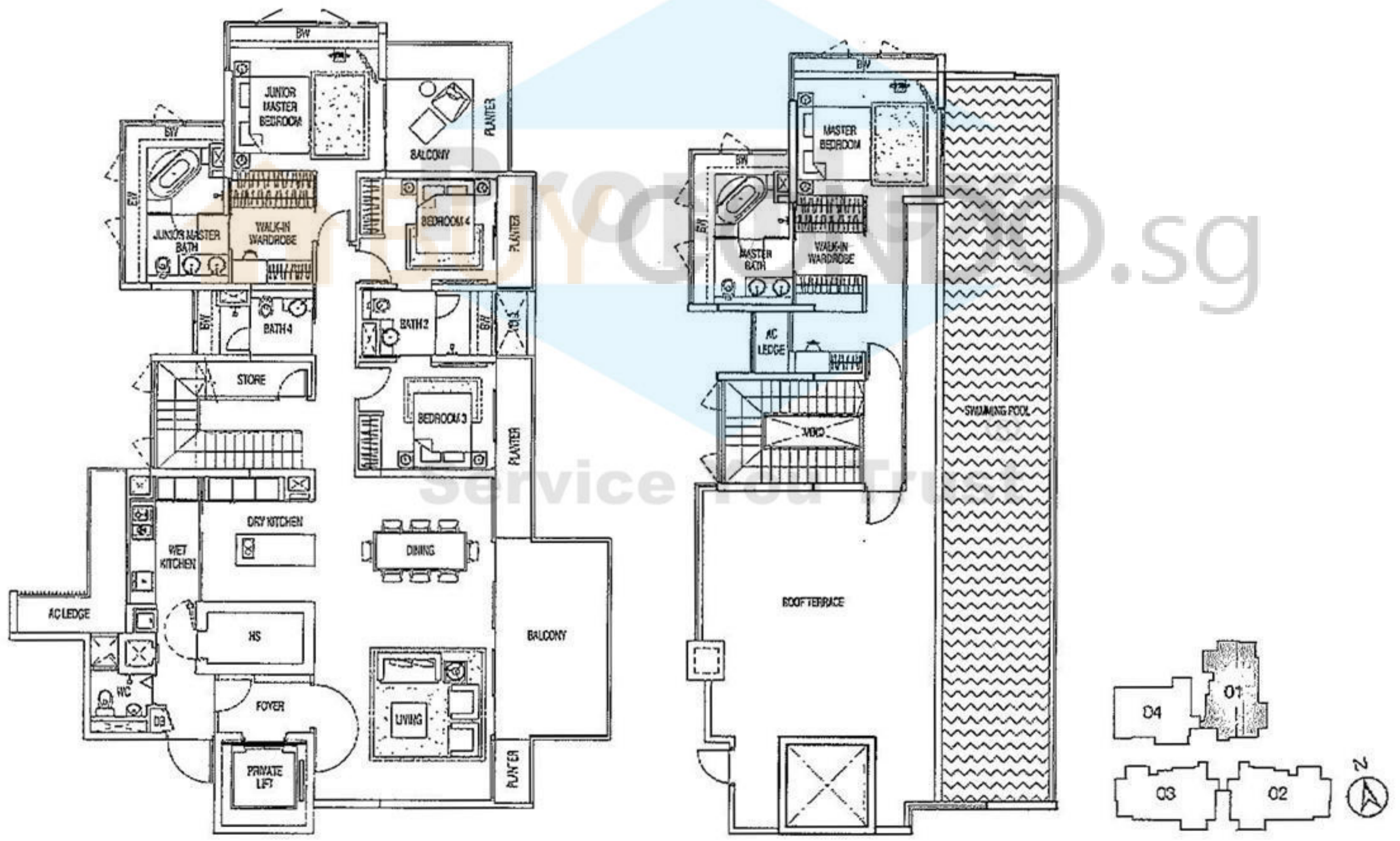
167 sqm (1,798 sf)
5th to 17th storey: 04



MEIER SUITES

Type P1 - Sky Suite

387 sqm (4,166 sf)
#18-01

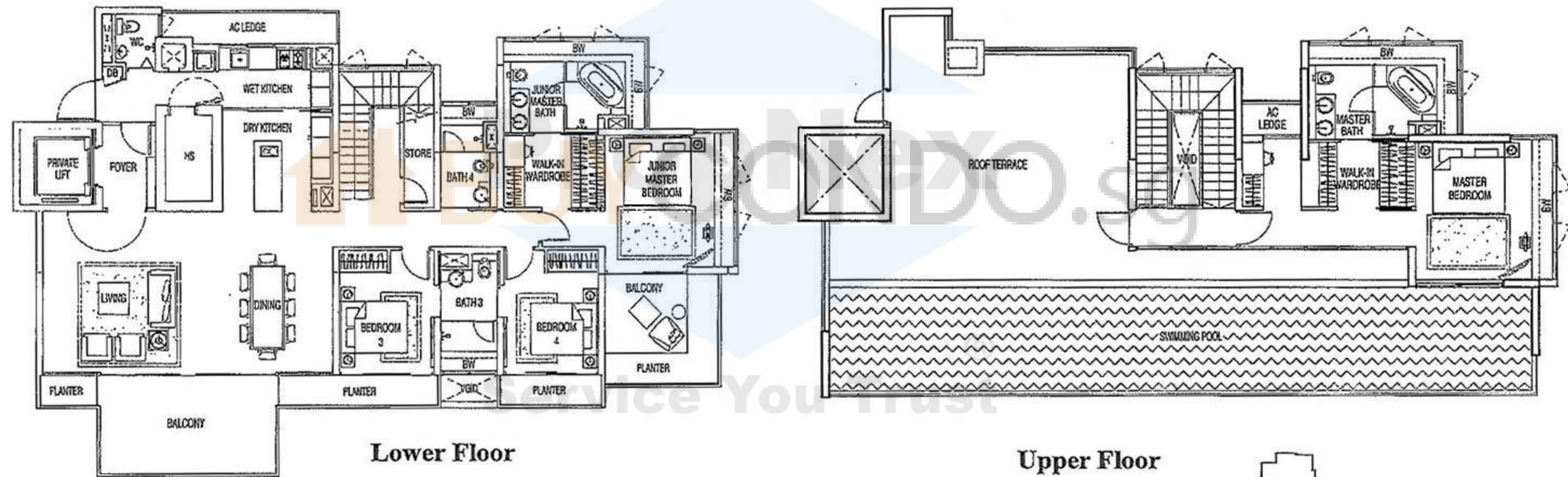


The plans are subject to change as may be required or approved by the relevant authorities. These are not drawn to scale and are solely for the purpose of visual representation of the different layouts that are available. Areas are estimates only and are subject to final survey.

MEIER SUITES

Type P2 - Sky Suite

384 sqm (4,133 sf)
#18-02

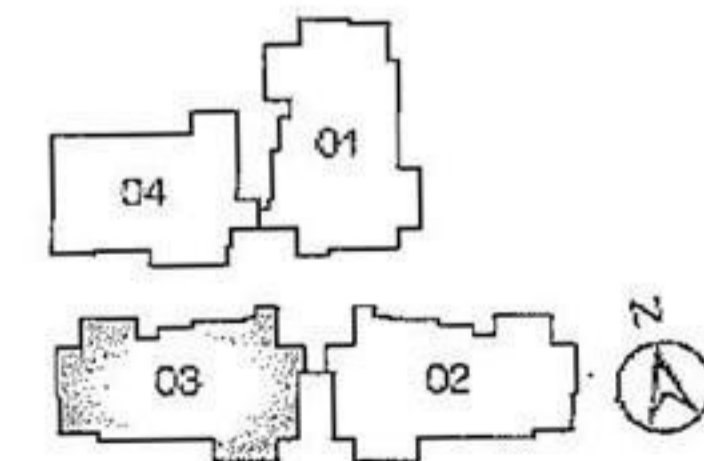
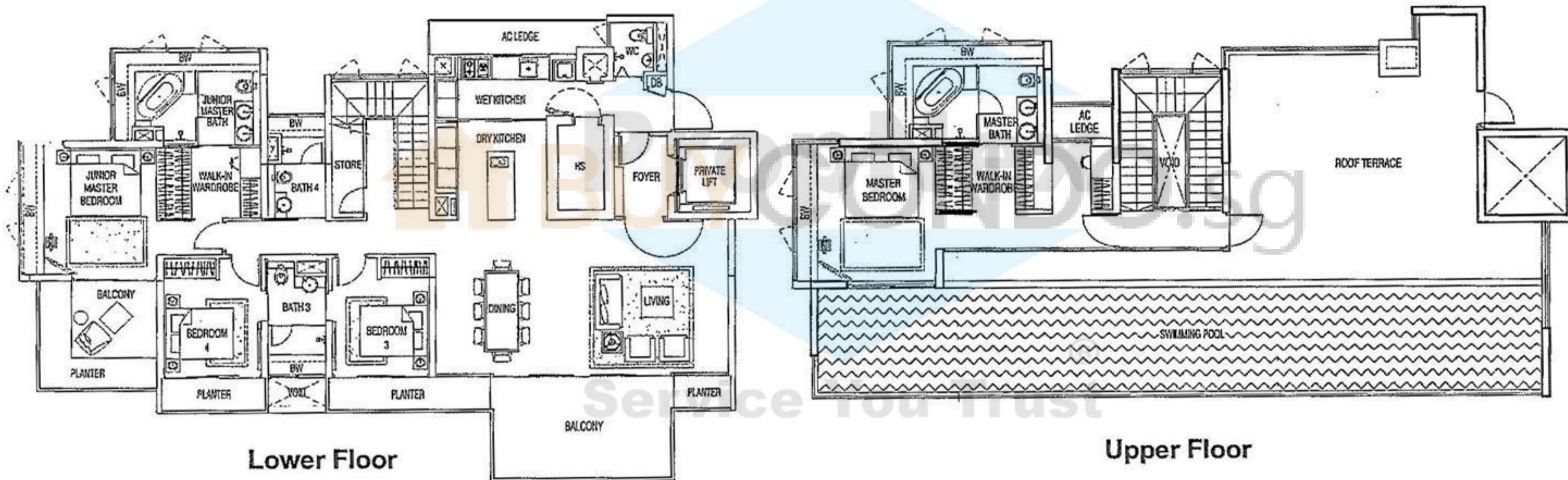


The plans are subject to change as may be required or approved by the relevant authorities. These are not drawn to scale and are solely for the purpose of visual representation of the different layouts that are available. Areas are estimates only and are subject to final survey.

MEIER SUITES

Type P3 - Sky Suite

384 sqm (4,133 sf)
#18-03

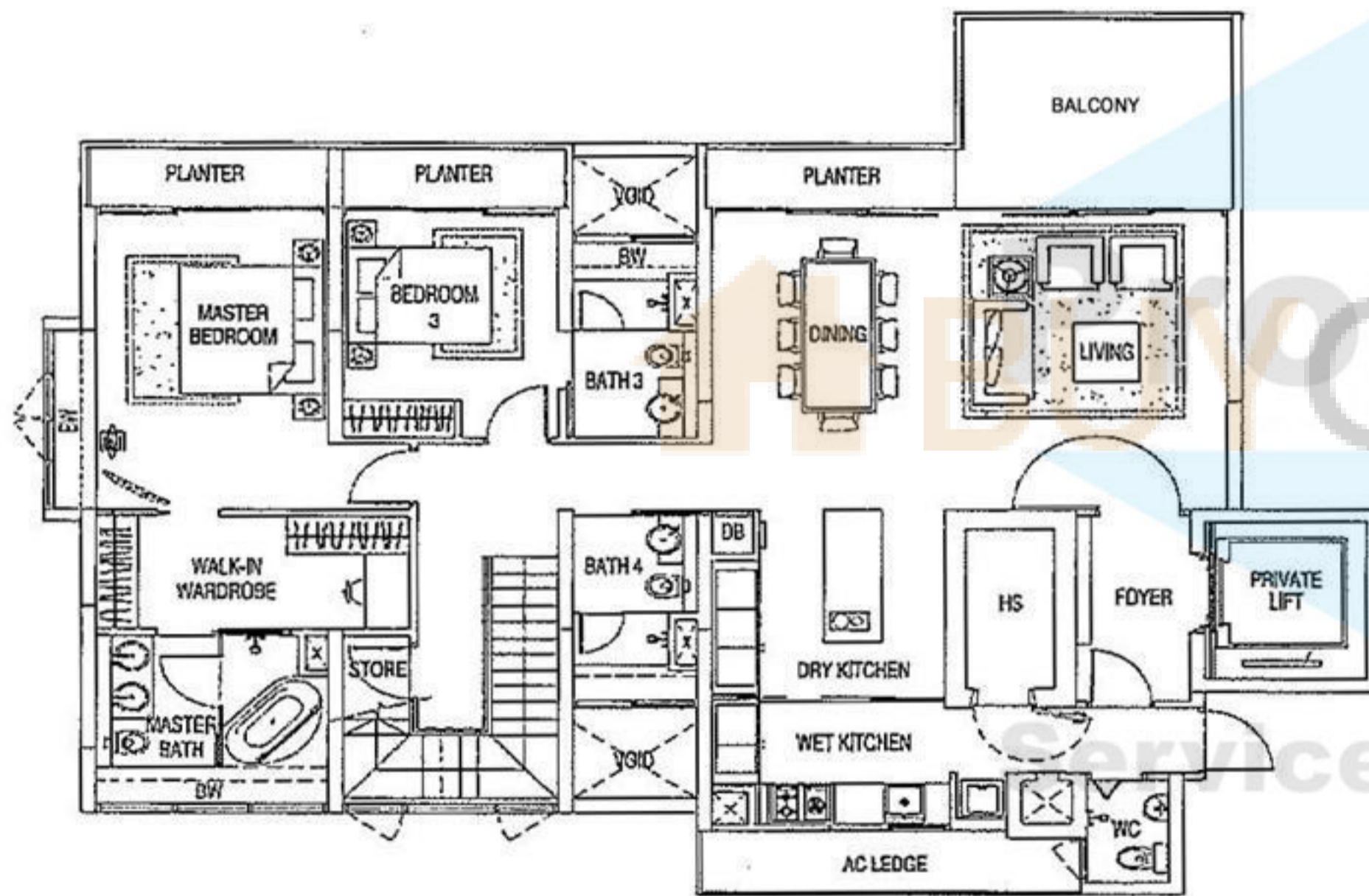


The plans are subject to change as may be required or approved by the relevant authorities. These are not drawn to scale and are solely for the purpose of visual representation of the different layouts that are available. Areas are estimates only and are subject to final survey.

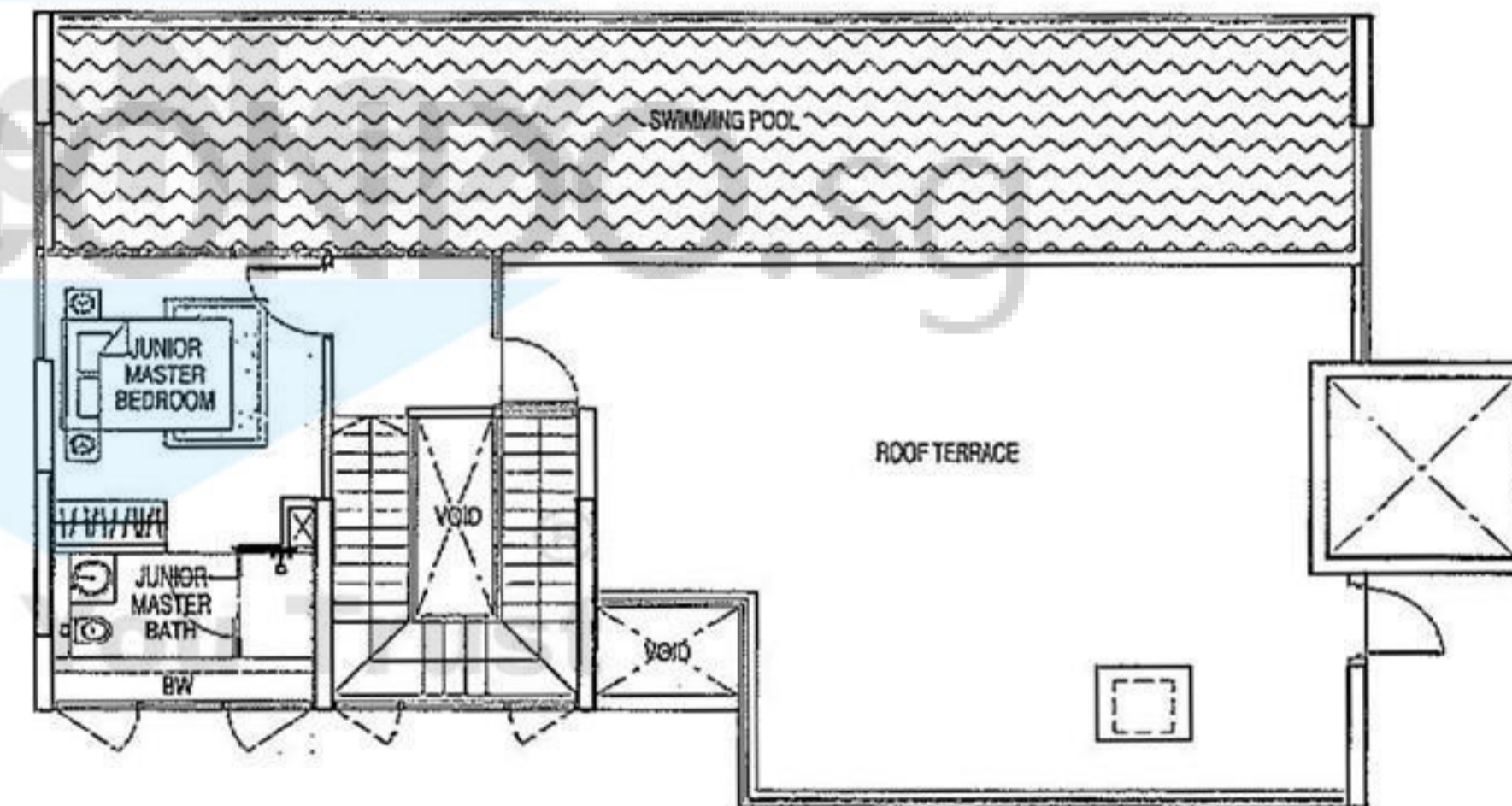
MEIER SUITES

Type P4 - Sky Suite

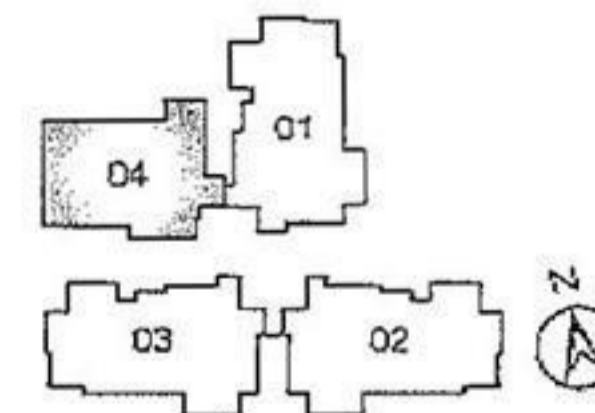
314 sqm (3,380 sf)
#18-04



Lower Floor



Upper Floor



The plans are subject to change as may be required or approved by the relevant authorities. These are not drawn to scale and are solely for the purpose of visual representation of the different layouts that are available. Areas are estimates only and are subject to final survey.