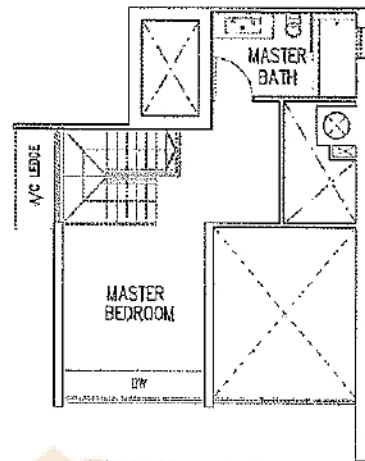
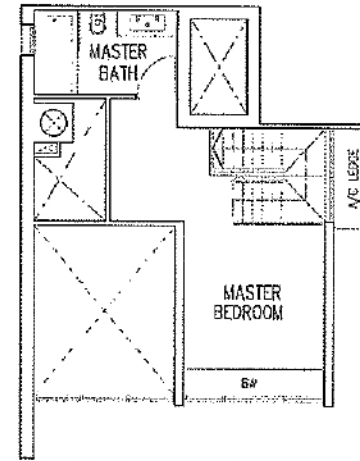


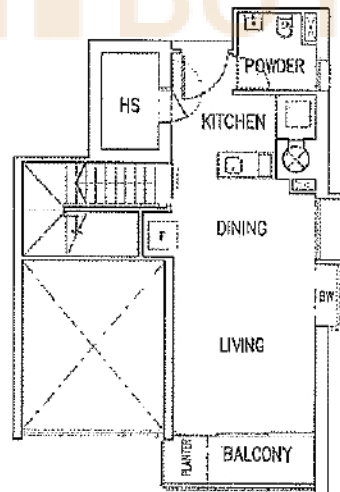
TYPE AL



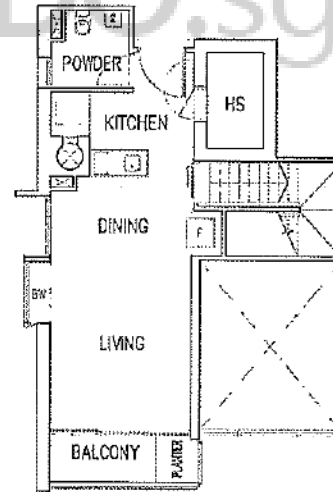
TYPE AL Upper Loft
4th, 6th & 8th STOREY



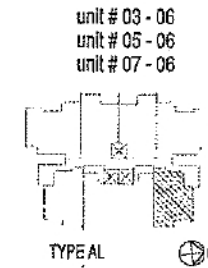
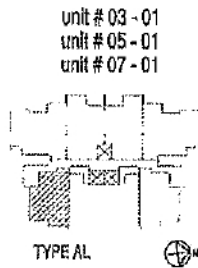
TYPE AL Upper Loft
4th, 6th & 8th STOREY



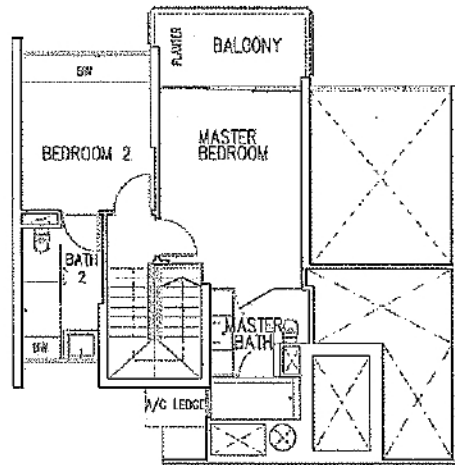
TYPE AL Lower Loft
3rd, 5th & 7th STOREY



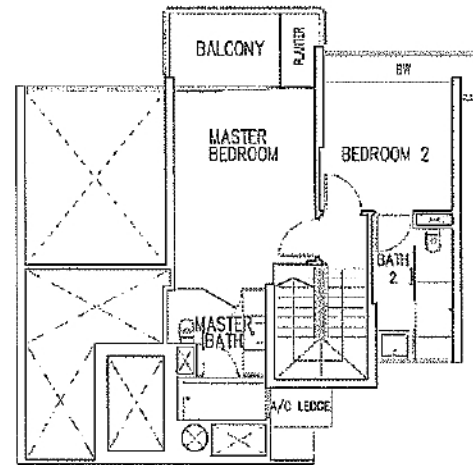
TYPE AL Lower Loft
3rd, 5th & 7th STOREY



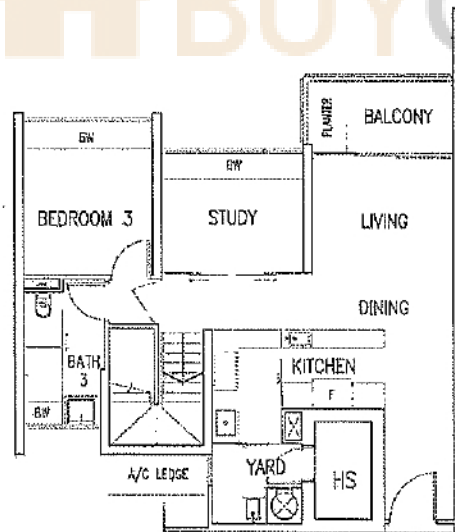
TYPE CL1a and CL1b



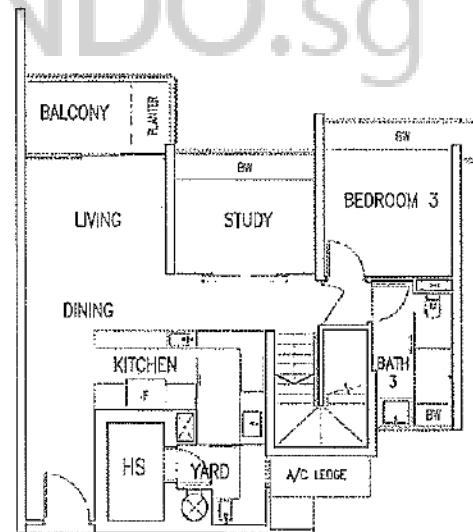
TYPE CL1a Upper Loft
4th, 6th & 8th STOREY



TYPE CL1b Upper Loft
4th, 6th & 8th STOREY

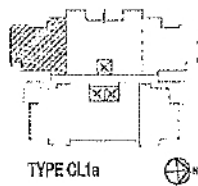


TYPE CL1a Lower Loft
3rd, 5th & 7th STOREY



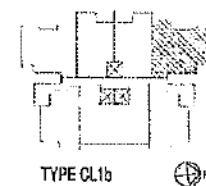
TYPE CL1b Lower Loft
3rd, 5th & 7th STOREY

unit # 03 - 02
unit # 05 - 02
unit # 07 - 02



TYPE CL1a

unit # 03 - 05
unit # 05 - 05
unit # 07 - 05



TYPE CL1b

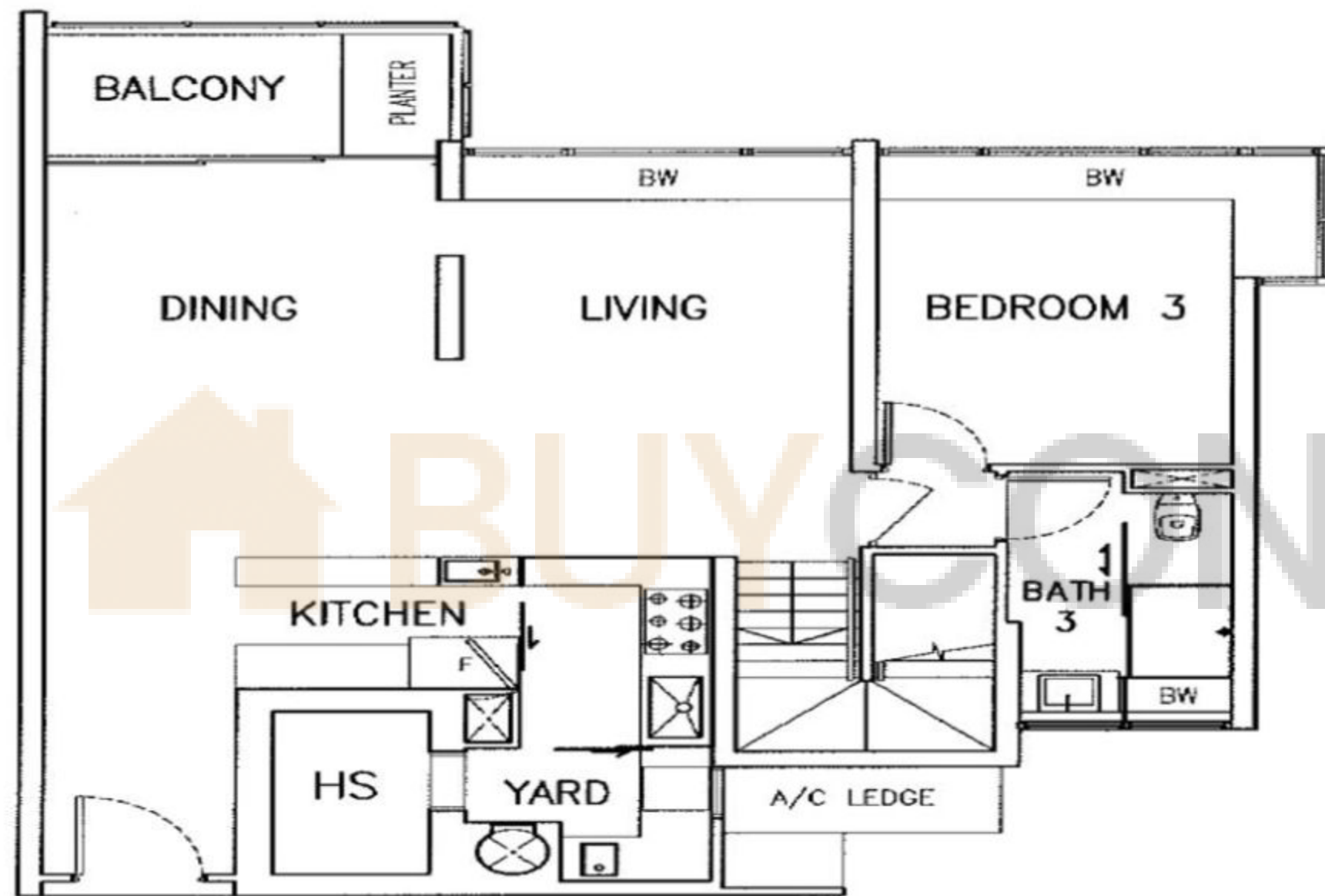
BUYCONDO.sg

MIRO

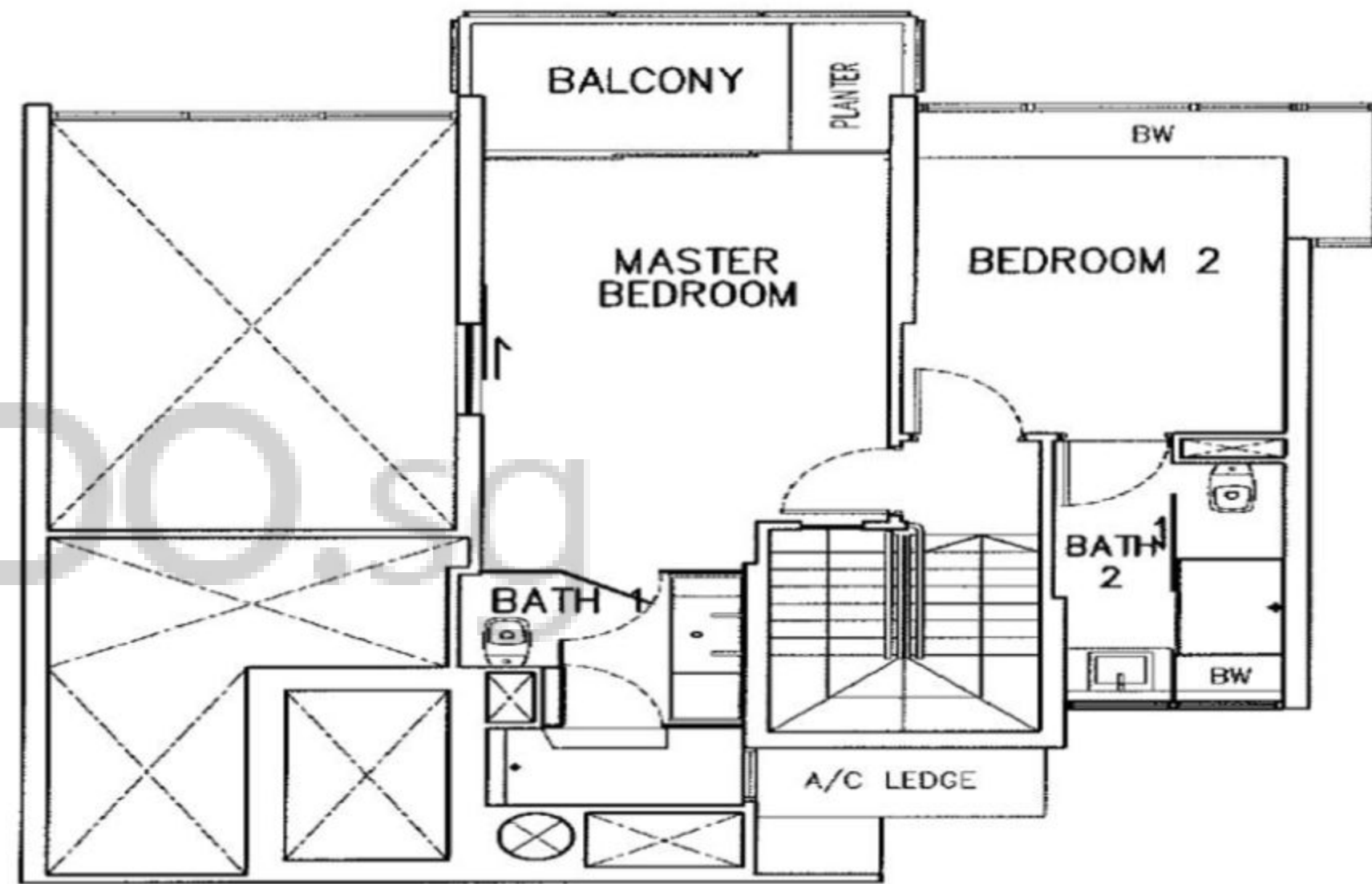
UNIT: #21-05

TYPE CL1

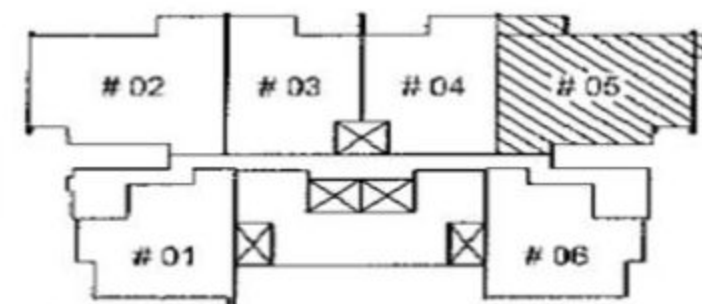
THE BELOW PLANS ARE SUBJECT TO CHANGE AS MAY BE APPROVED BY THE RELEVANT AUTHORITIES



LOWER LOFT

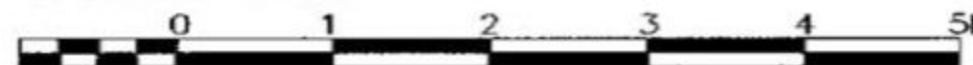


UPPER LOFT



N KEYPLAN
THIS KEYPLAN IS NOT TO SCALE

SCALE 1:100



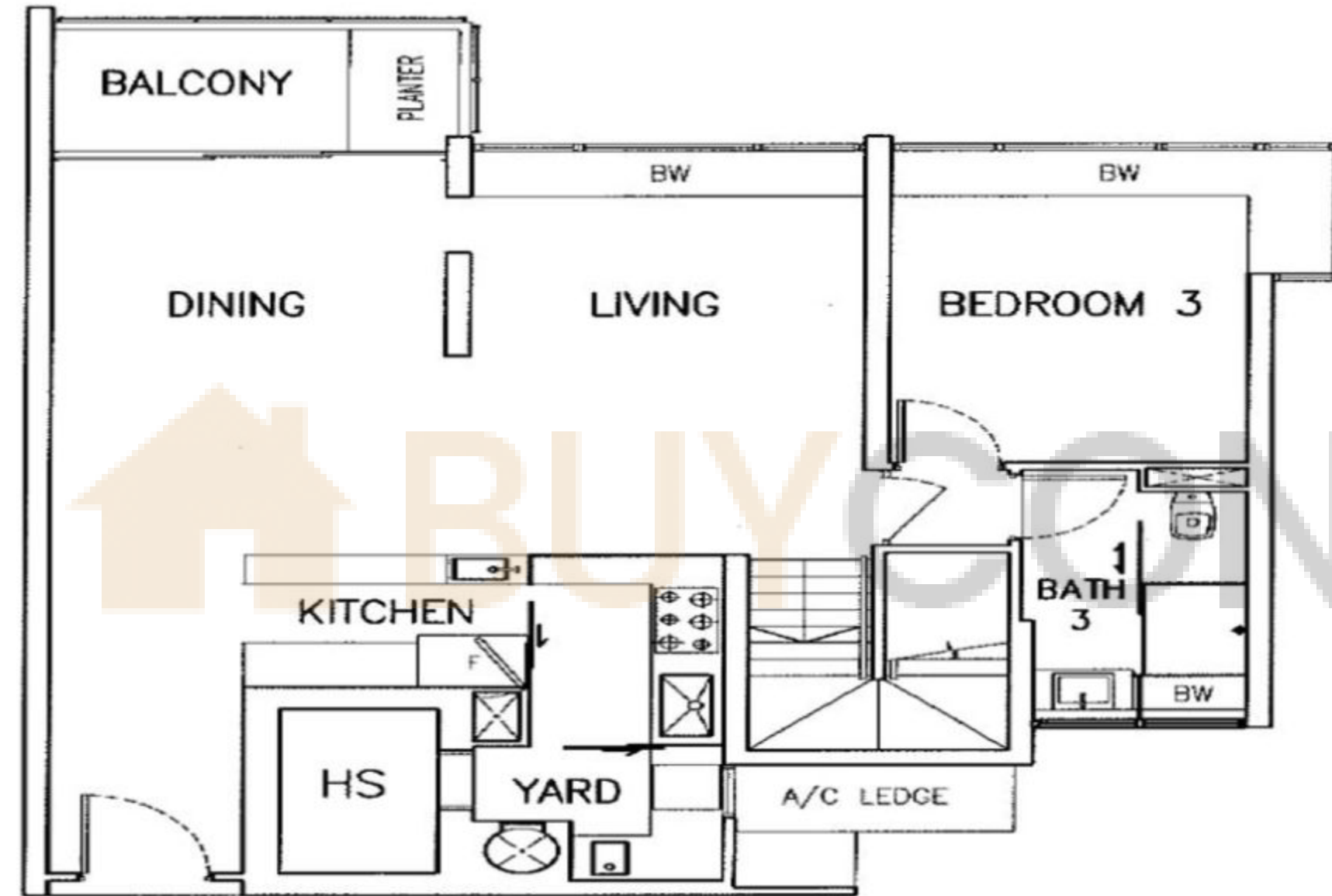
BP no: A0719-00001-2003-BP01 dated 11 June 2004	BP no: A0719-00001-2003-BP05 dated 15 Oct 2007
BP no: A0719-00001-2003-BP02 dated 20 Sept 2004	BP no: A0719-00001-2003-BP06 dated 22 Aug 2008
BP no: A0719-00001-2003-BP04 dated 07 July 2005	BP no: A0719-00001-2003-BP07 dated 28 Sept 2009
	BP no: A0719-00001-2003-BP08 dated 30 April 2012

MIRO

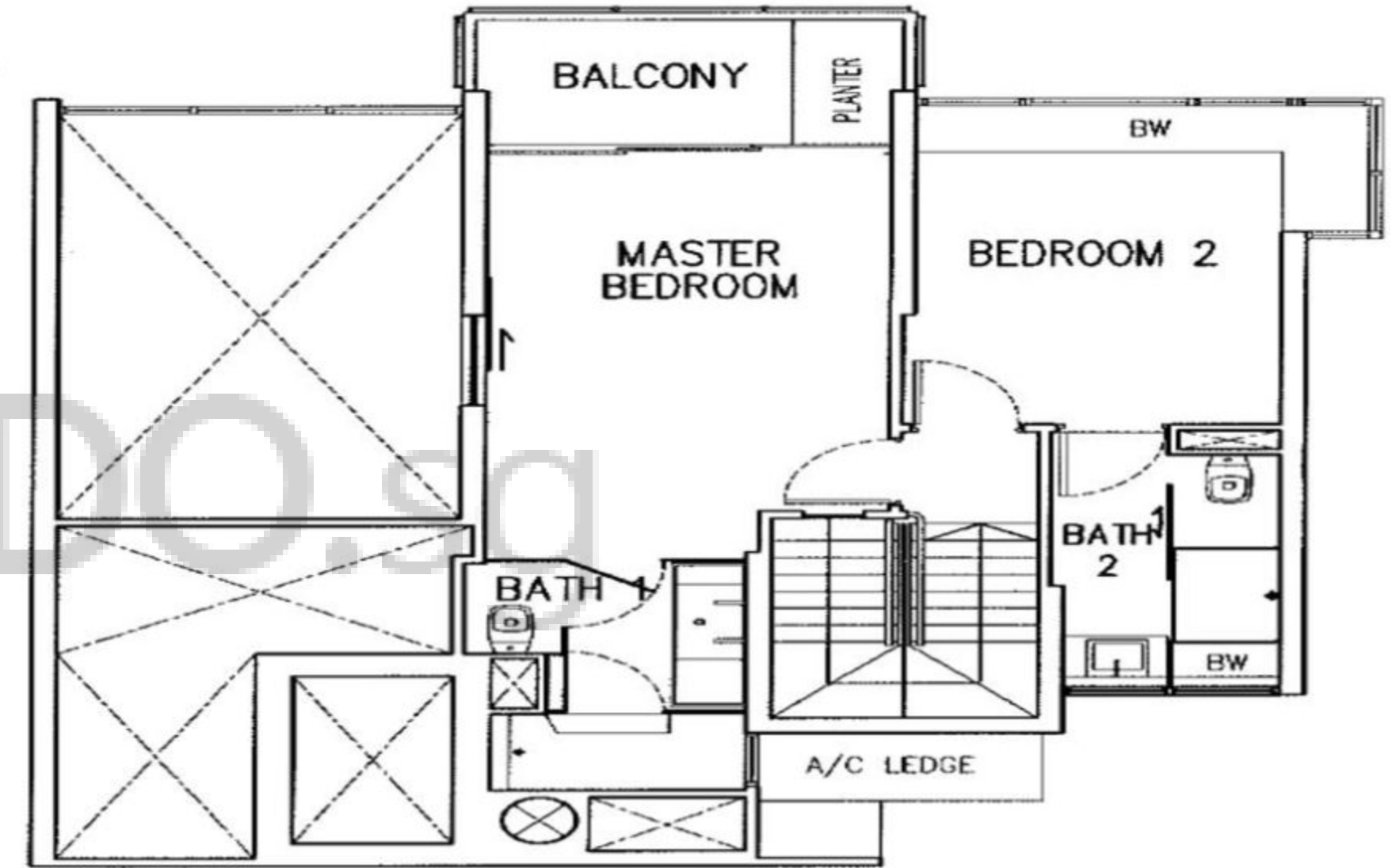
TYPE CL1

THE BELOW PLANS ARE SUBJECT TO CHANGE
AS MAY BE APPROVED BY THE RELEVANT AUTHORITIES

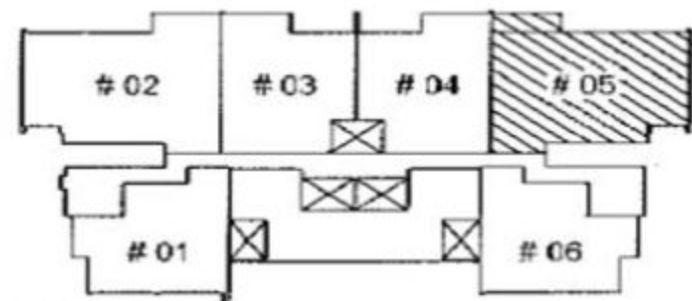
UNIT: #23-05



LOWER LOFT



UPPER LOFT



 KEY PLAN
THIS KEY PLAN IS NOT TO SCALE

SCALE 1:100



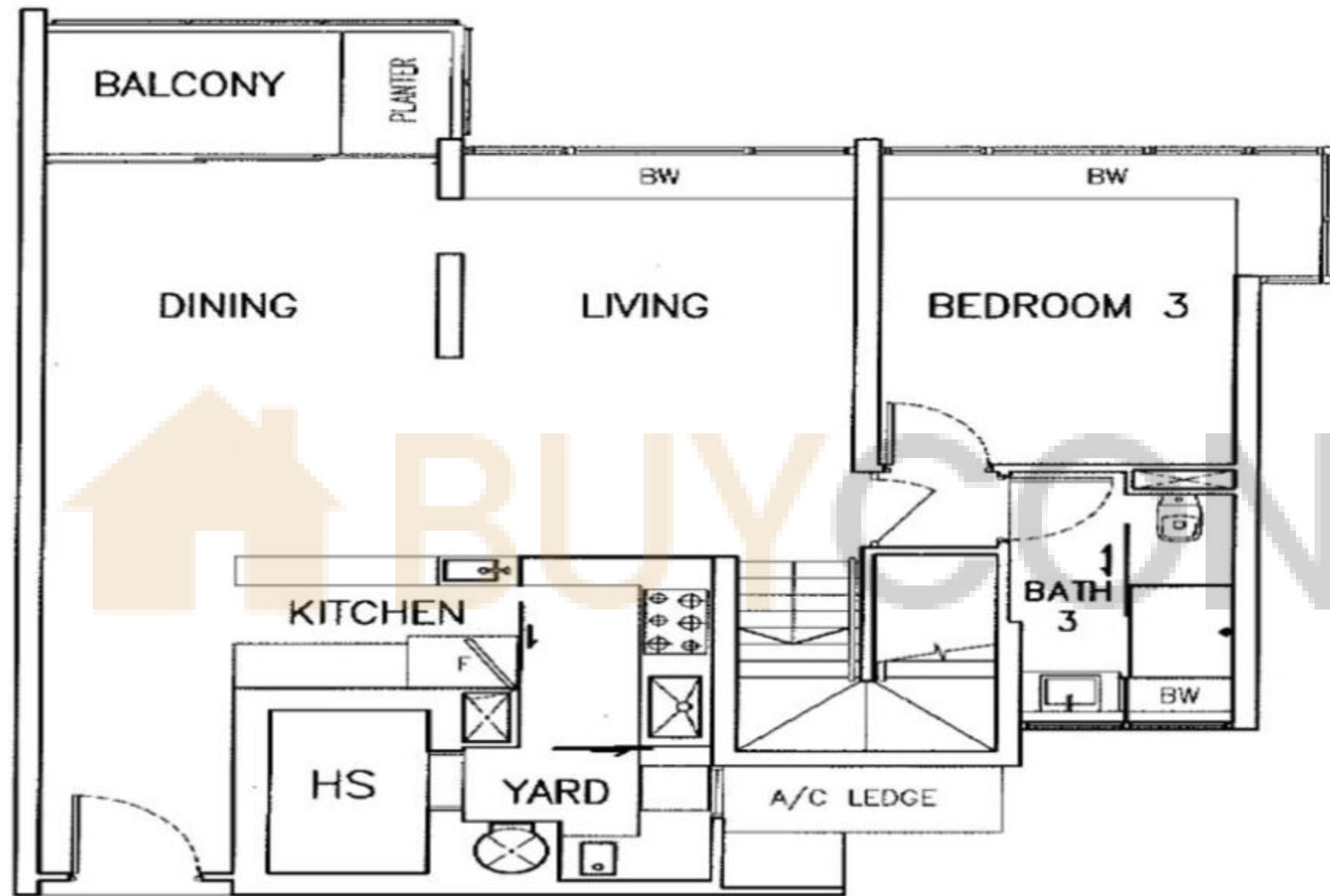
BP no: A0719-00001-2003-BP01 dated 11 June 2004	BP no: A0719-00001-2003-BP05 dated 15 Oct 2007
BP no: A0719-00001-2003-BP02 dated 20 Sept 2004	BP no: A0719-00001-2003-BP06 dated 22 Aug 2008
BP no: A0719-00001-2003-BP04 dated 07 July 2005	BP no: A0719-00001-2003-BP07 dated 28 Sept 2009
	BP no: A0719-00001-2003-BP08 dated 30 April 2012

MIRO

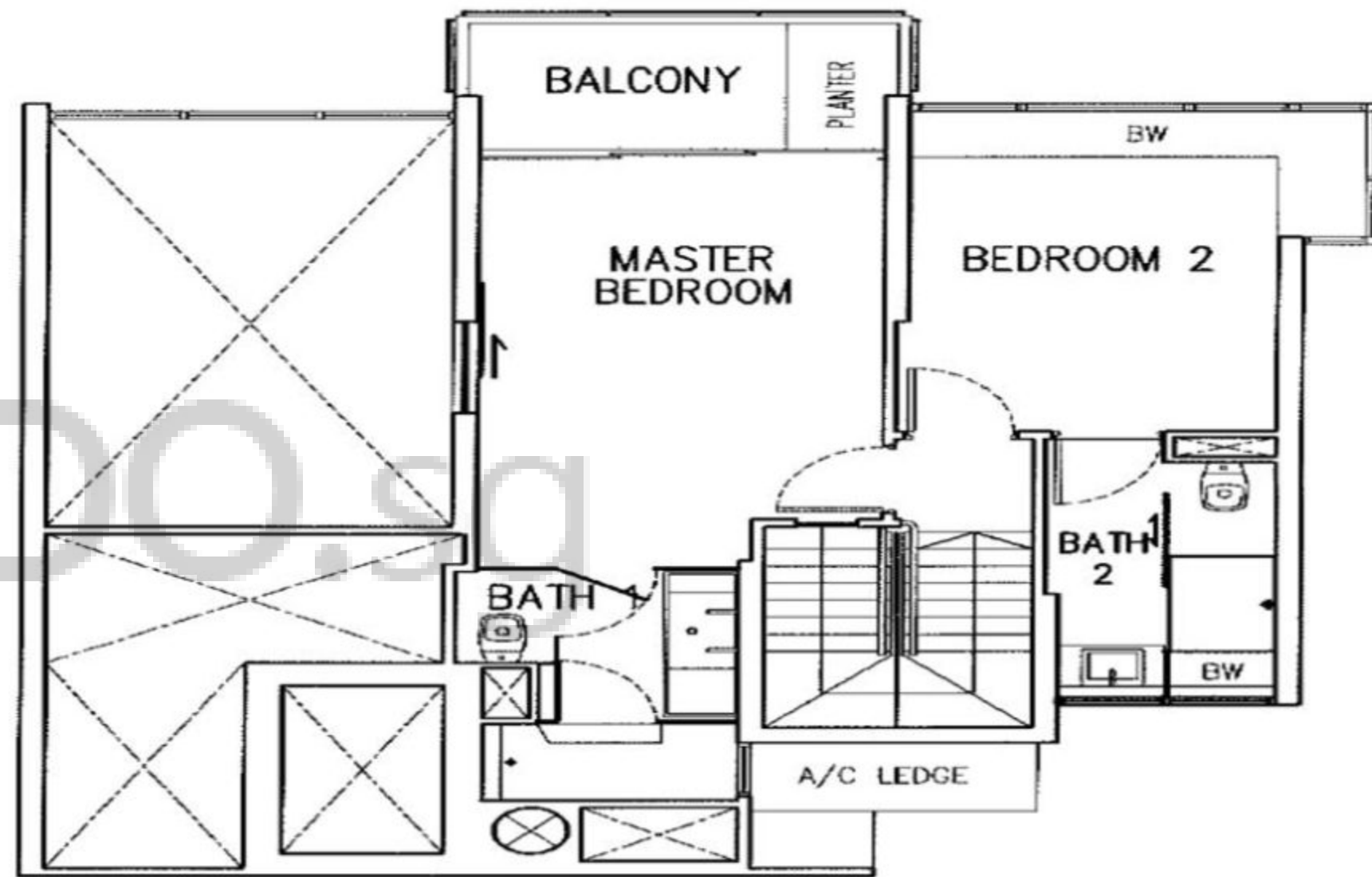
UNIT: #27-05

TYPE CL1

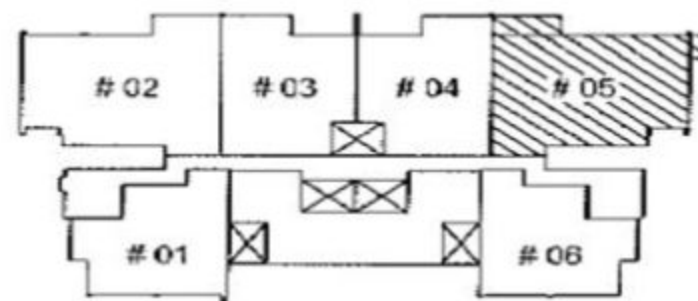
THE BELOW PLANS ARE SUBJECT TO CHANGE AS MAY BE APPROVED BY THE RELEVANT AUTHORITIES



LOWER LOFT



UPPER LOFT



KEYPLAN
THIS KEYPLAN IS NOT TO SCALE

SCALE 1:100



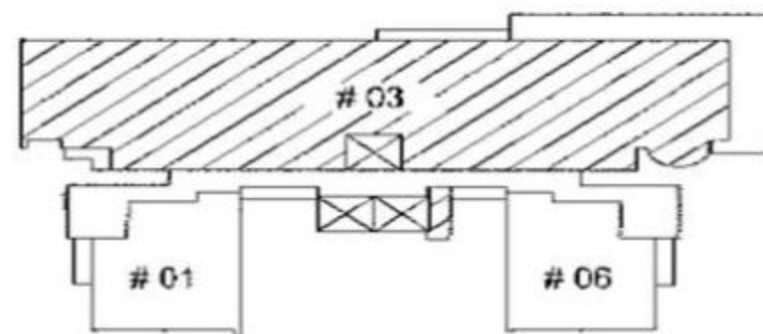
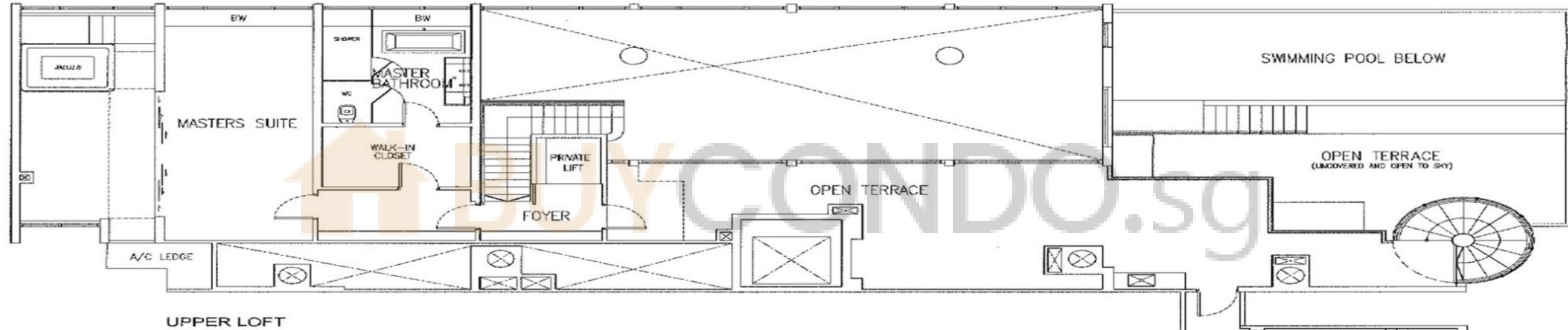
BP no: A0719-00001-2003-BP01 dated 11 June 2004	BP no: A0719-00001-2003-BP05 dated 15 Oct 2007
BP no: A0719-00001-2003-BP02 dated 20 Sept 2004	BP no: A0719-00001-2003-BP06 dated 22 Aug 2008
BP no: A0719-00001-2003-BP03 dated 07 July 2005	BP no: A0719-00001-2003-BP07 dated 28 Sept 2009
BP no: A0719-00001-2003-BP04 dated 07 July 2005	BP no: A0719-00001-2003-BP08 dated 30 April 2012

MIRO

Penthouse

UNIT: #31-03

THE BELOW PLANS ARE SUBJECT TO CHANGE
AS MAY BE APPROVED BY THE RELEVANT AUTHORITIES



N
KEYPLAN
THIS KEYPLAN IS NOT TO SCALE

SCALE 1:100



BP no: A0719-00001-2003-BP01 dated 11 June 2004	BP no: A0719-00001-2003-BP06 dated 22 Aug 2008
BP no: A0719-00001-2003-BP02 dated 20 Sept 2004	BP no: A0719-00001-2003-BP07 dated 28 Sept 2009
BP no: A0719-00001-2003-BP04 dated 07 July 2005	BP no: A0719-00001-2003-BP08 dated 30 April 2012