

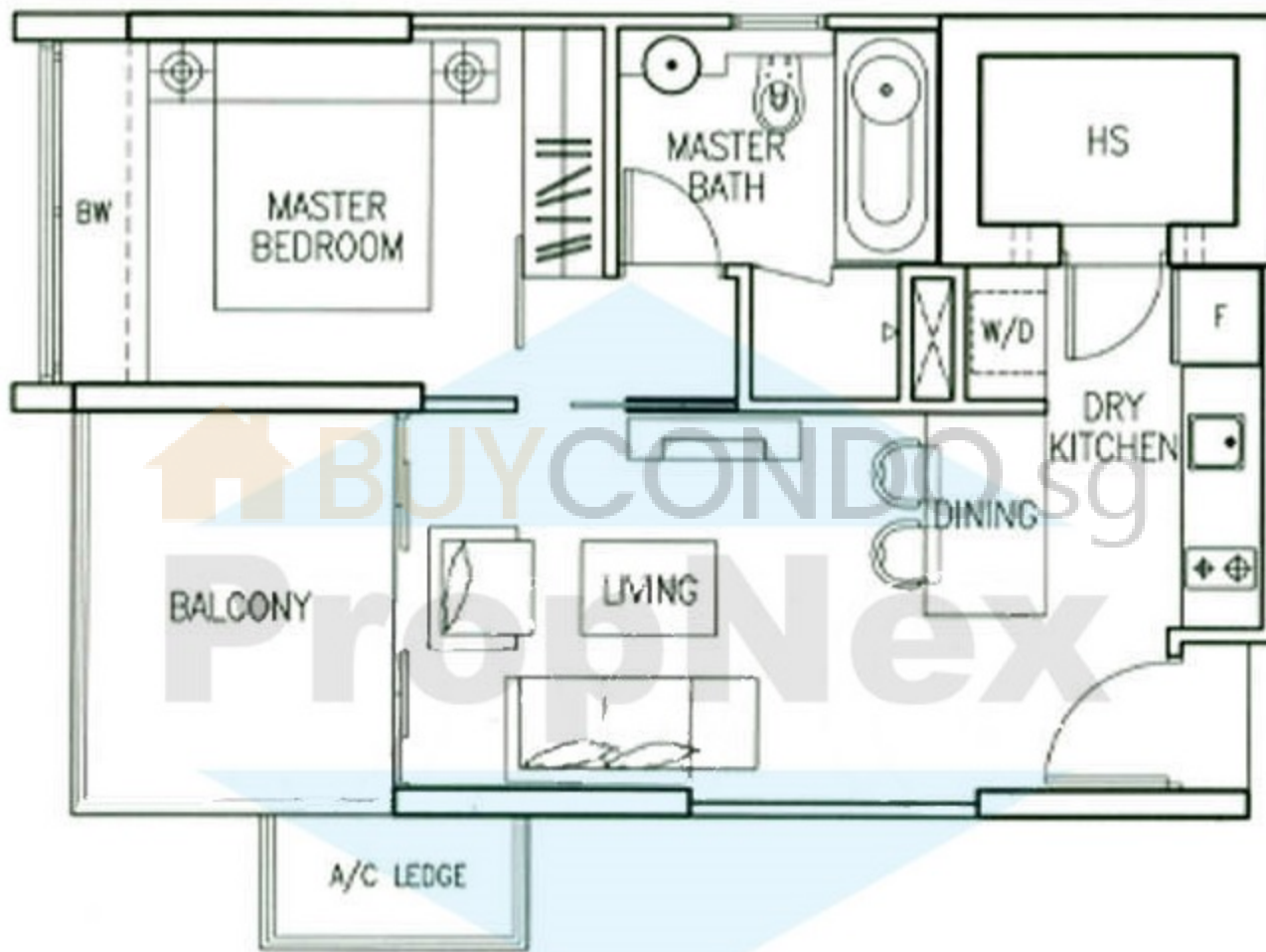
1 Bedroom

TYPE 1

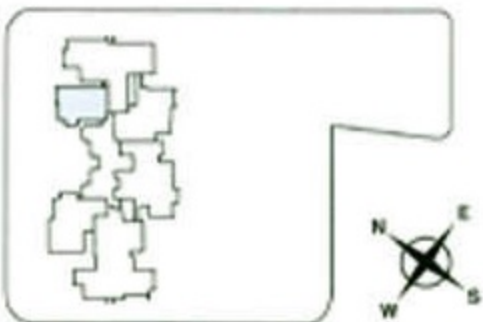
53 sq m (570 sq ft)

#05-04 - #13-04

#16-04 - #21-04



Service You Trust[®]



The plans are subject to change as may be required or approved by the relevant authorities. These are not drawn to scale and are for the purpose of visual presentation of the different layouts that are available. Areas are estimates only and are subject to final survey.

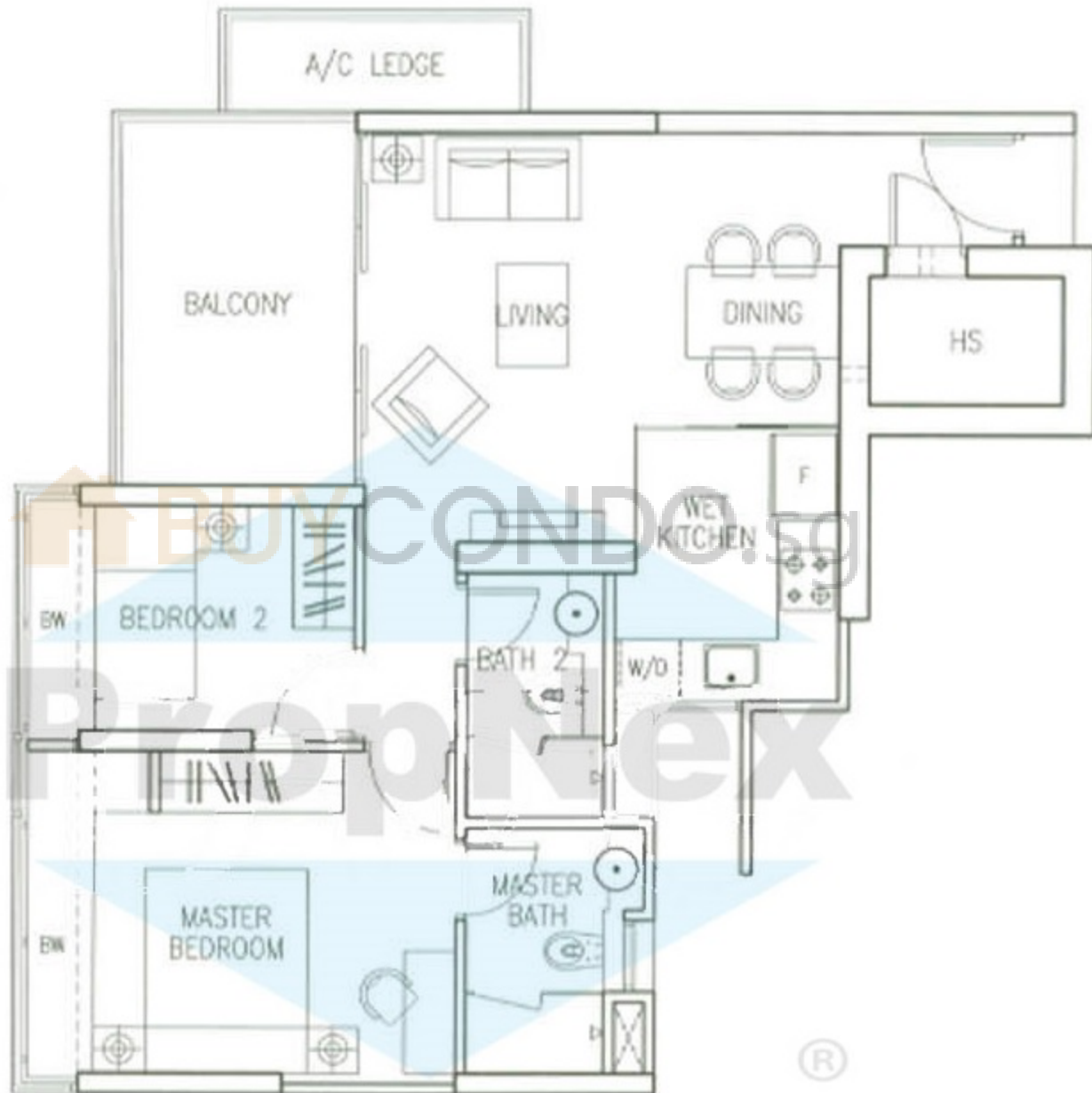
2 Bedroom

TYPE 2A

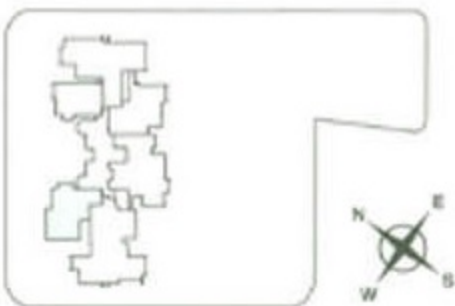
75 sq m (807 sq ft)

#05-03 - #13-03

#16-03 - #31-03



Service You Trust



The plans are subject to change as may be required or approved by the relevant authorities. These are not drawn to scale and are for the purpose of visual presentation of the different layouts that are available. Areas are estimates only and are subject to final survey.

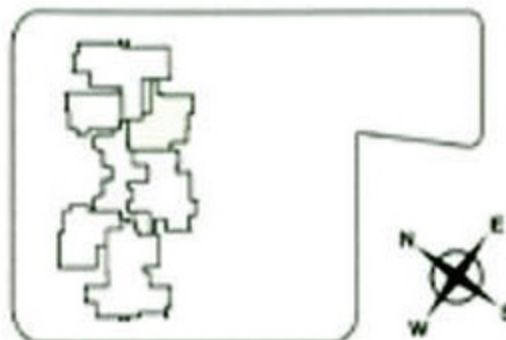
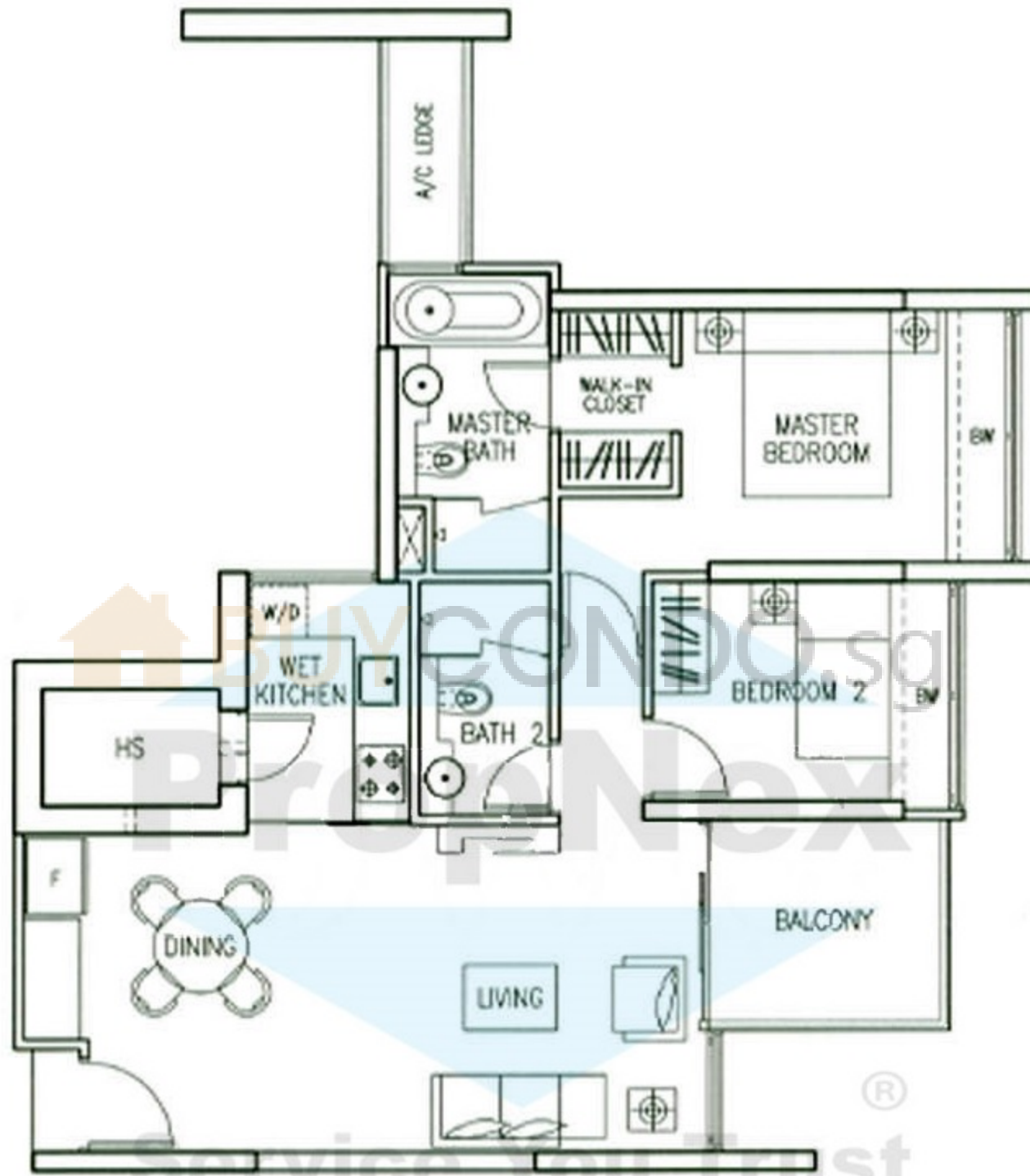
2 Bedroom

TYPE 2B

79 sq m (850 sq ft)

#06-06 - #13-06

#15-06 - #31-06



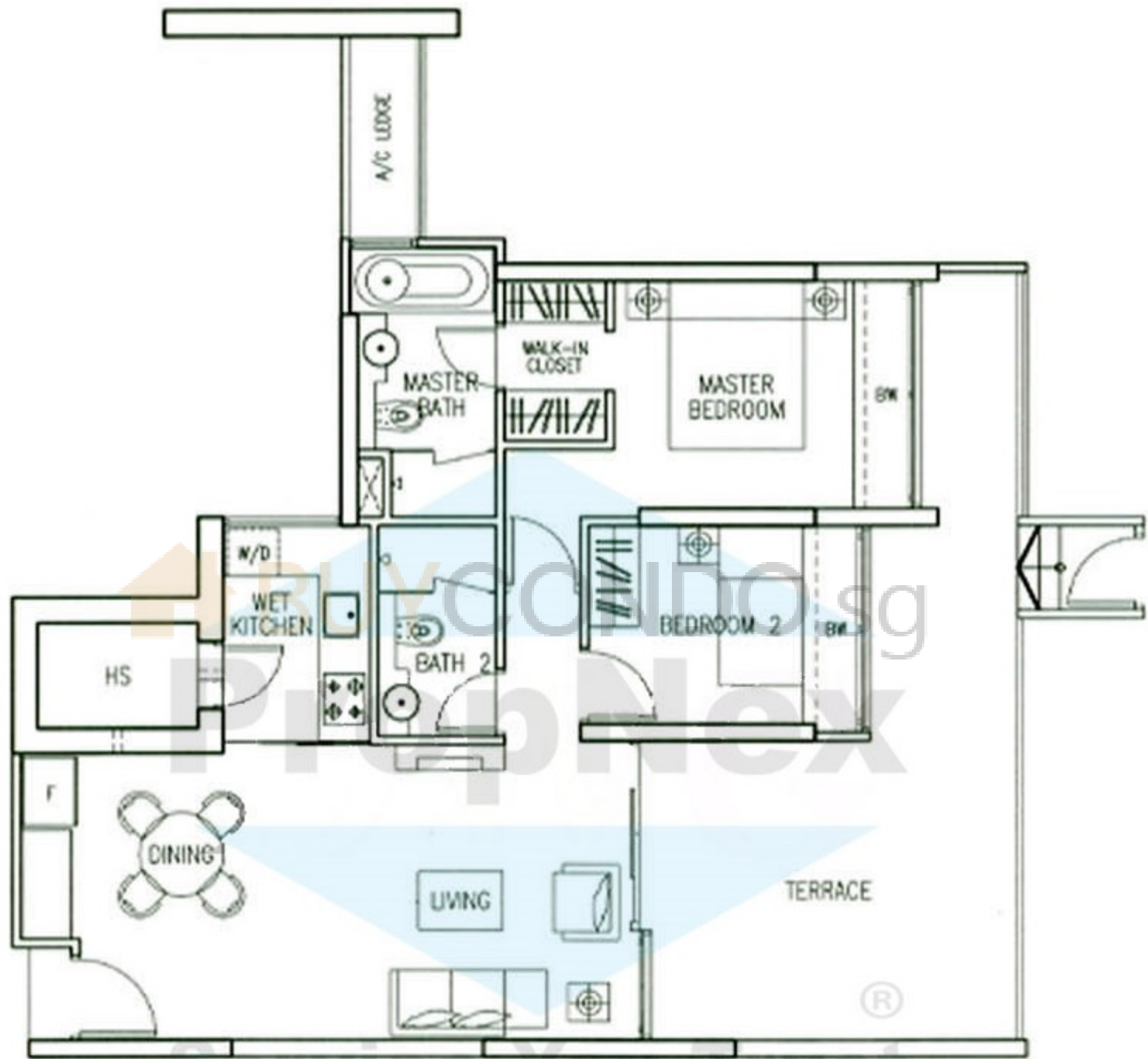
The plans are subject to change as may be required or approved by the relevant authorities. These are not drawn to scale and are for the purpose of visual presentation of the different layouts that are available. Areas are estimates only and are subject to final survey.

2 Bedroom

TYPE 2B-P

100 sq m (1,076 sq ft)

#05-06



The plans are subject to change as may be required or approved by the relevant authorities. These are not drawn to scale and are for the purpose of visual presentation of the different layouts that are available. Areas are estimates only and are subject to final survey.

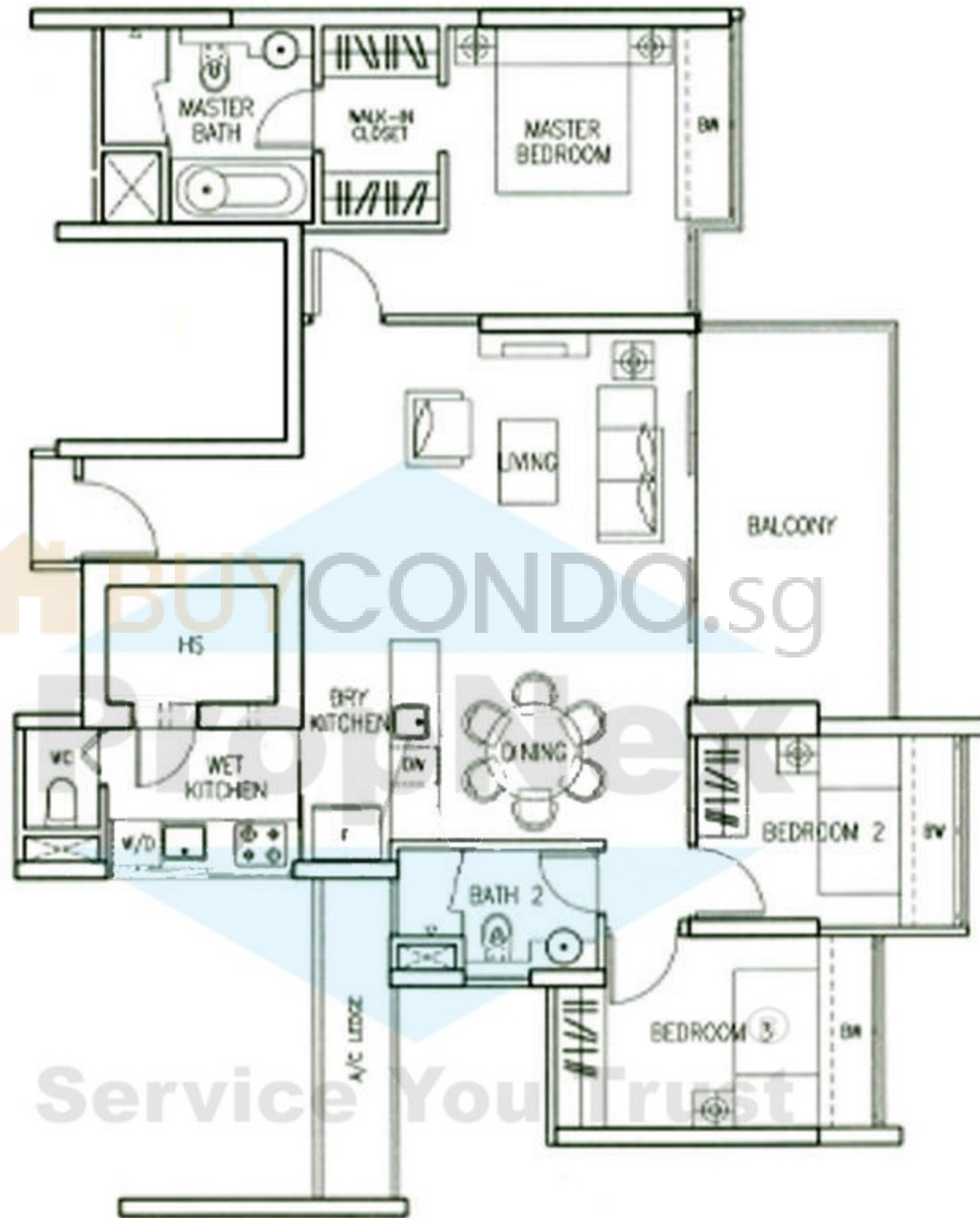
3 Bedroom

TYPE 3A

106 sq m (1,141 sq ft)

#06-01 - #13-01

#15-01 - #31-01



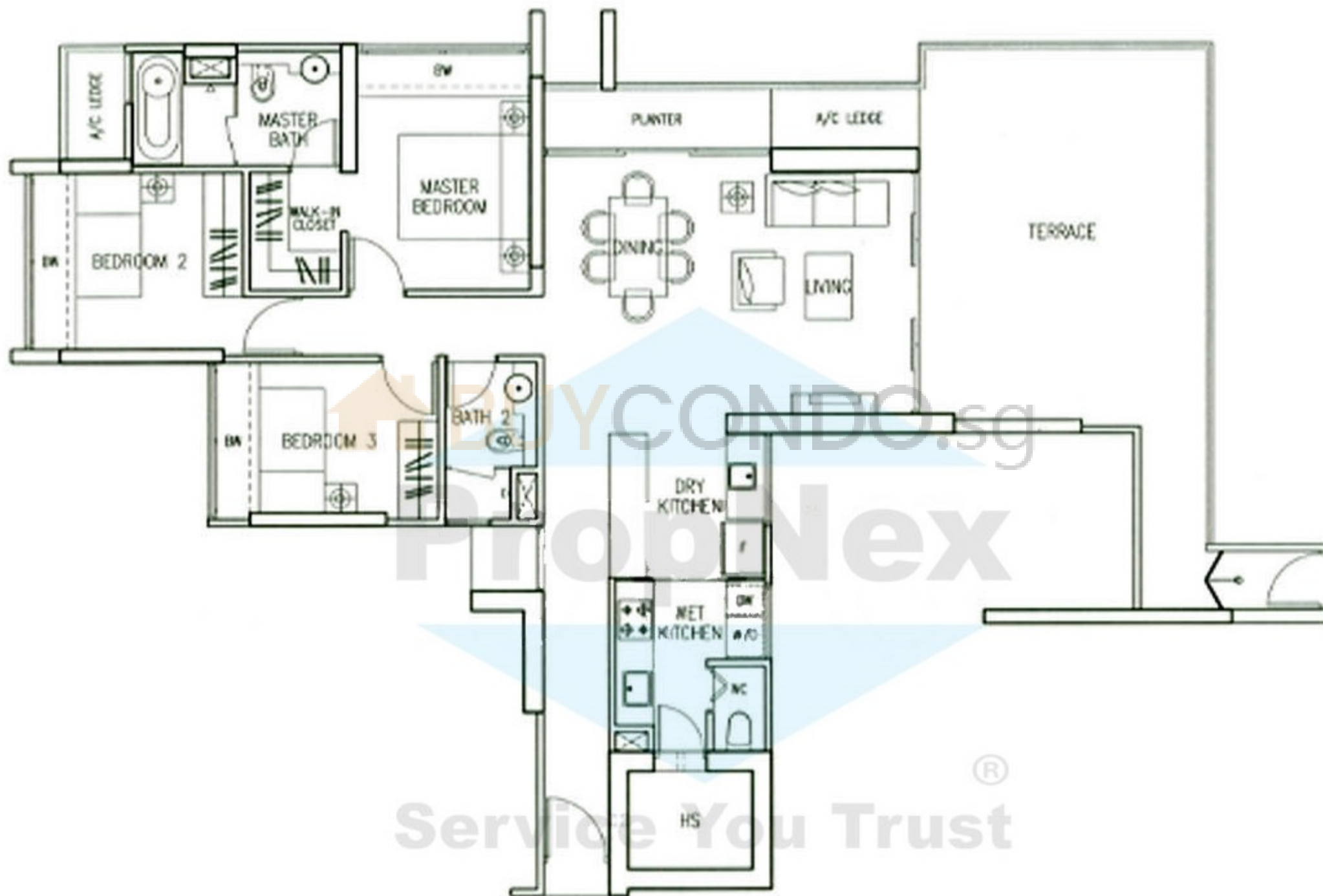
The plans are subject to change as may be required or approved by the relevant authorities. These are not drawn to scale and are for the purpose of visual presentation of the different layouts that are available. Areas are estimates only and are subject to final survey.

3 Bedroom

TYPE 3B-P

133 sq m (1,432 sq ft)

#05-06



The plans are subject to change as may be required or approved by the relevant authorities. These are not drawn to scale and are for the purpose of visual presentation of the different layouts that are available. Areas are estimates only and are subject to final survey.

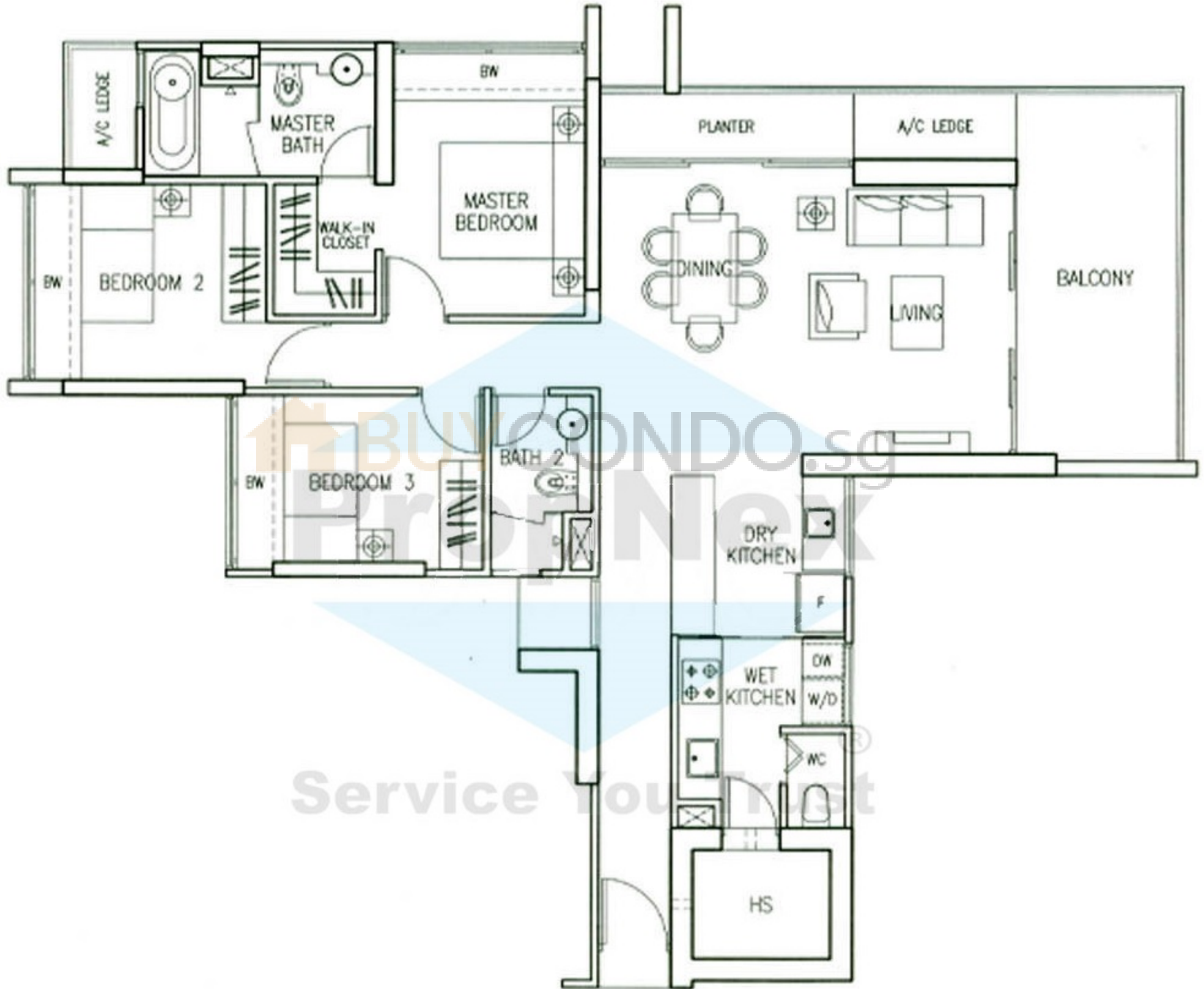
3 Bedroom

TYPE 3B

114 sq m (1,227 sq ft)

#06-05 - #13-05

#16-05 - #21-05



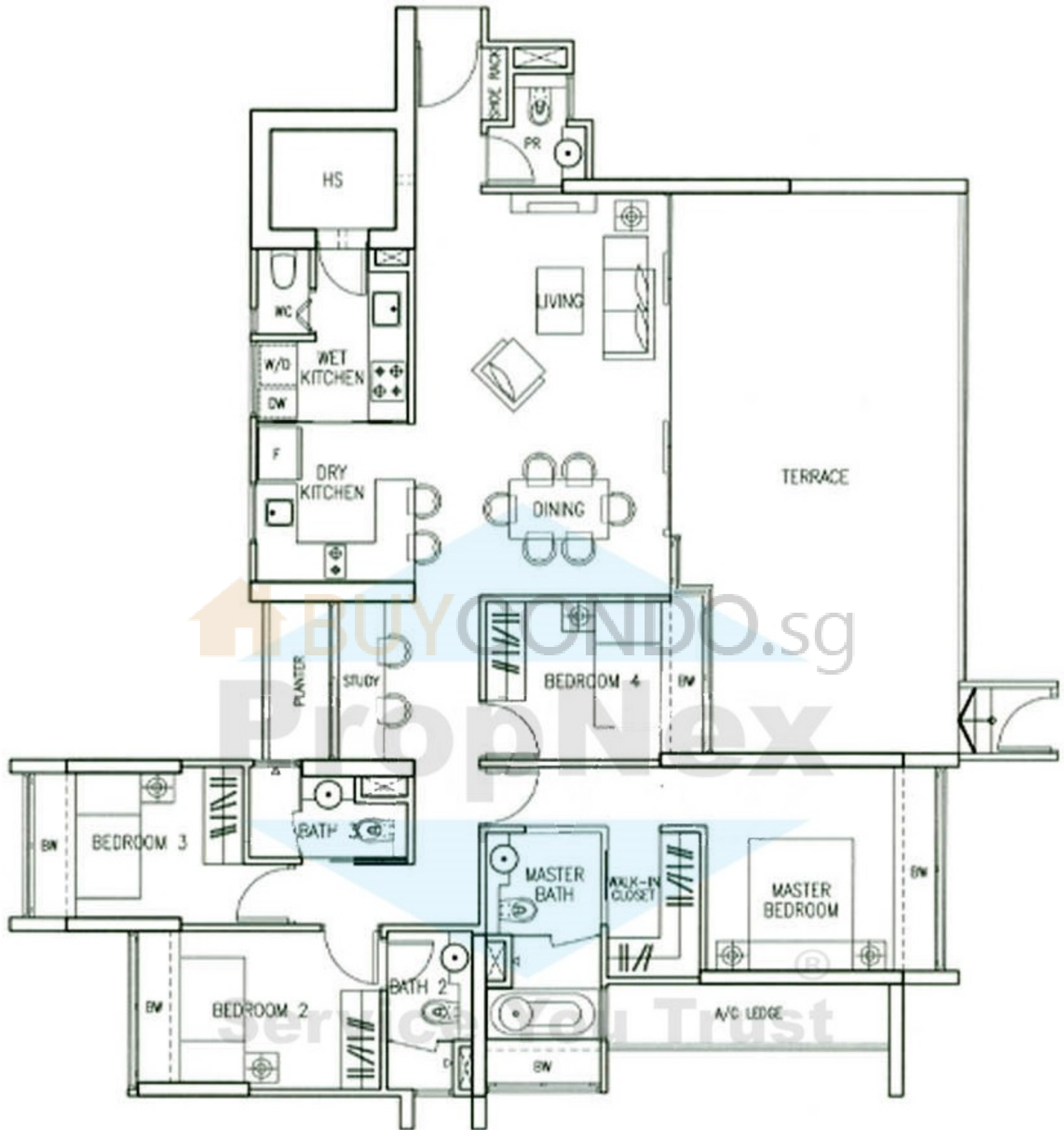
The plans are subject to change as may be required or approved by the relevant authorities. These are not drawn to scale and are for the purpose of visual presentation of the different layouts that are available. Areas are estimates only and are subject to final survey.

4 Bedroom Junior Executive Suite

TYPE 4A-P

163 sq m (1,755 sq ft)

#05-02



The plans are subject to change as may be required or approved by the relevant authorities. These are not drawn to scale and are for the purpose of visual presentation of the different layouts that are available. Areas are estimates only and are subject to final survey.

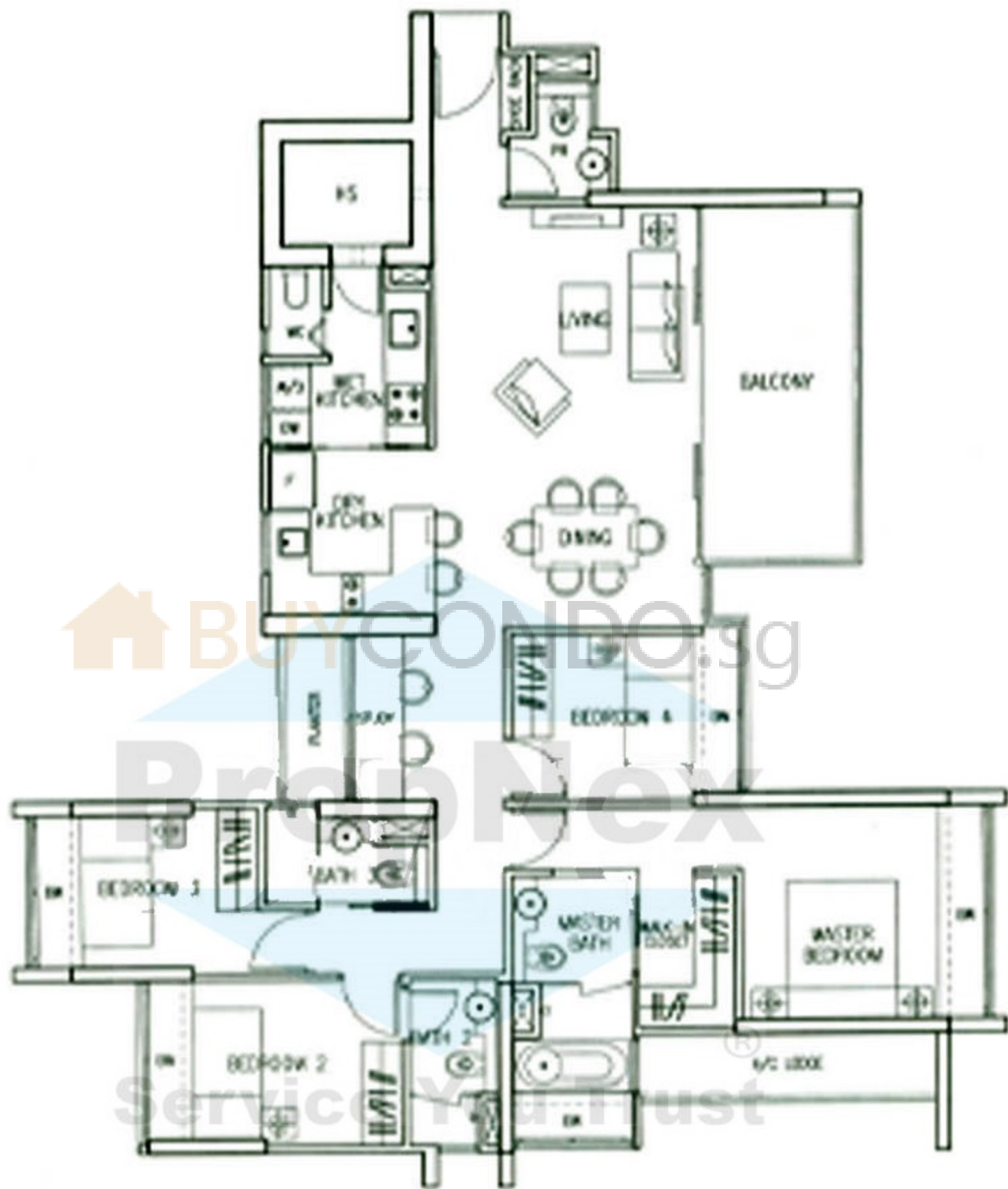
4 Bedroom Junior Executive Suite

TYPE 4A

137 sq m (1, 475 sq ft)

#08-02 - #13-02

#15-02 - #31-02



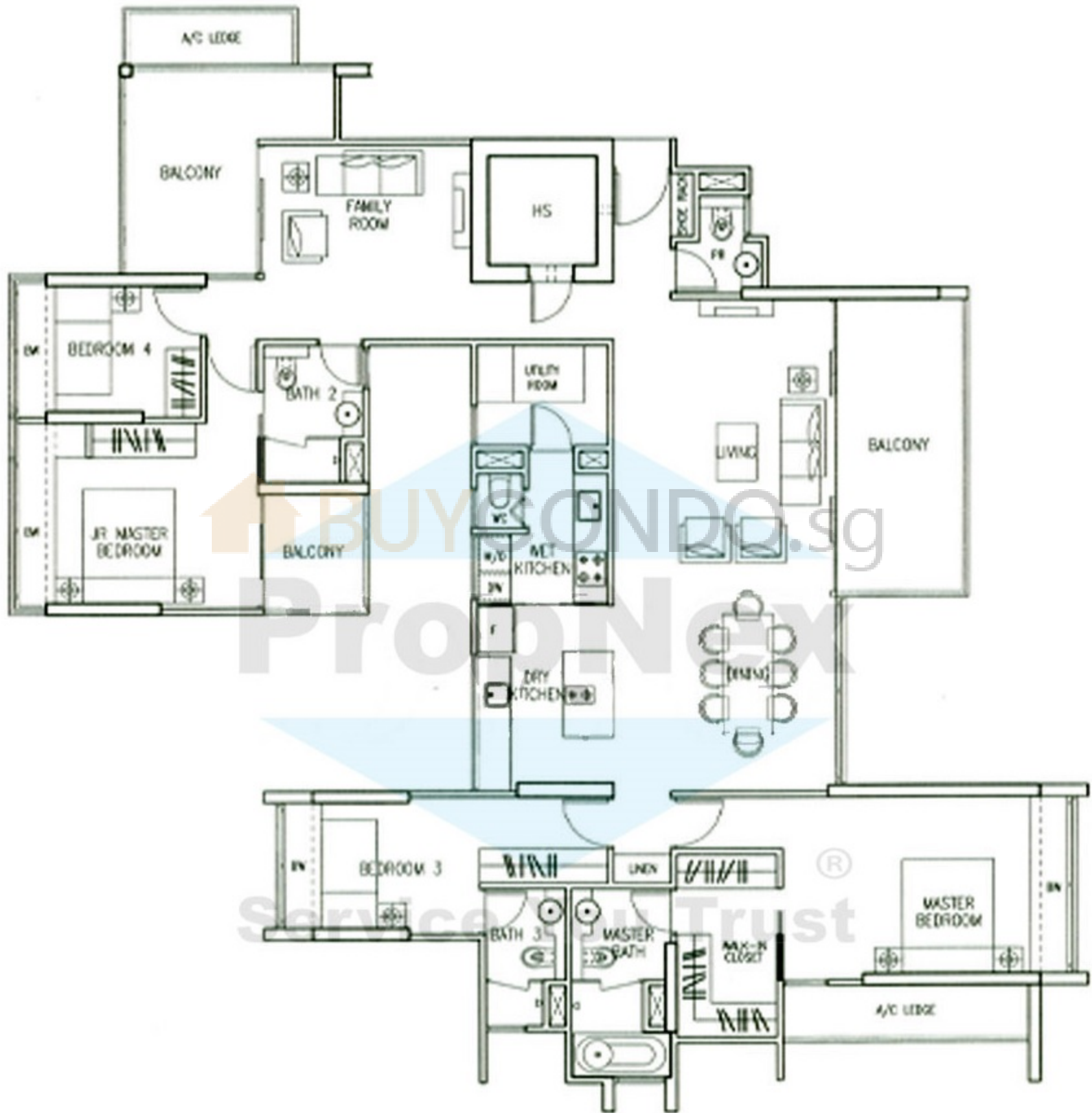
The plans are subject to change as may be required or approved by the relevant authorities. These are not drawn to scale and are for the purpose of visual presentation of the different layouts that are available. Areas are estimates only and are subject to final survey.

4 Bedroom Executive Suite

TYPE 4B-1

192 sq m (2,067 sq ft)

#33-02



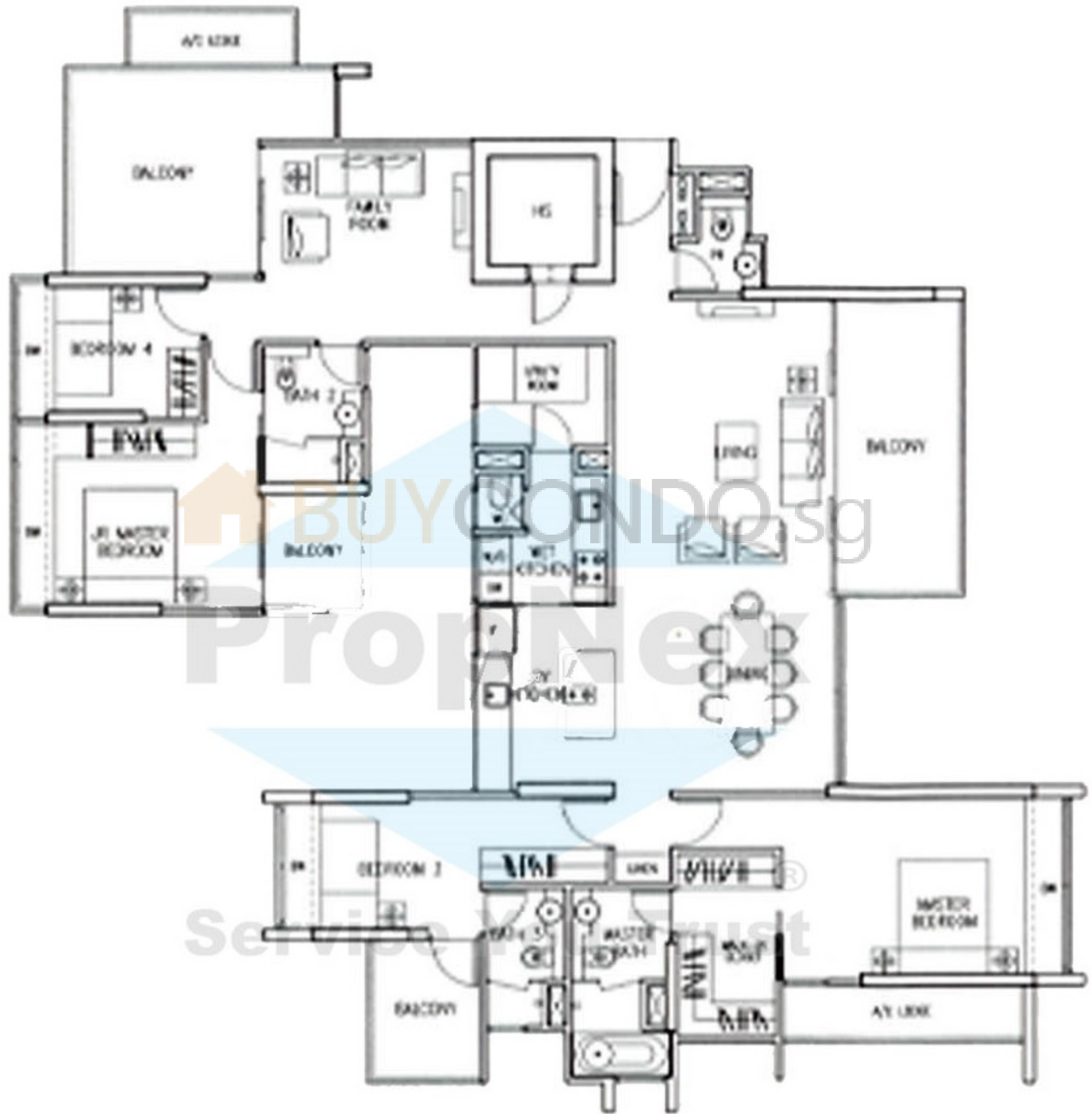
The plans are subject to change as may be required or approved by the relevant authorities. These are not drawn to scale and are for the purpose of visual presentation of the different layouts that are available. Areas are estimates only and are subject to final survey.

4 Bedroom Executive Suite

TYPE 4B

201 sq m (2,164 sq ft)

#32-02



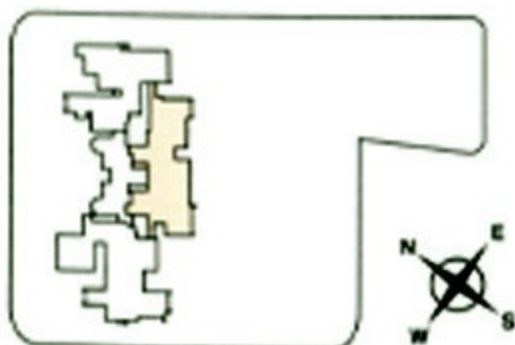
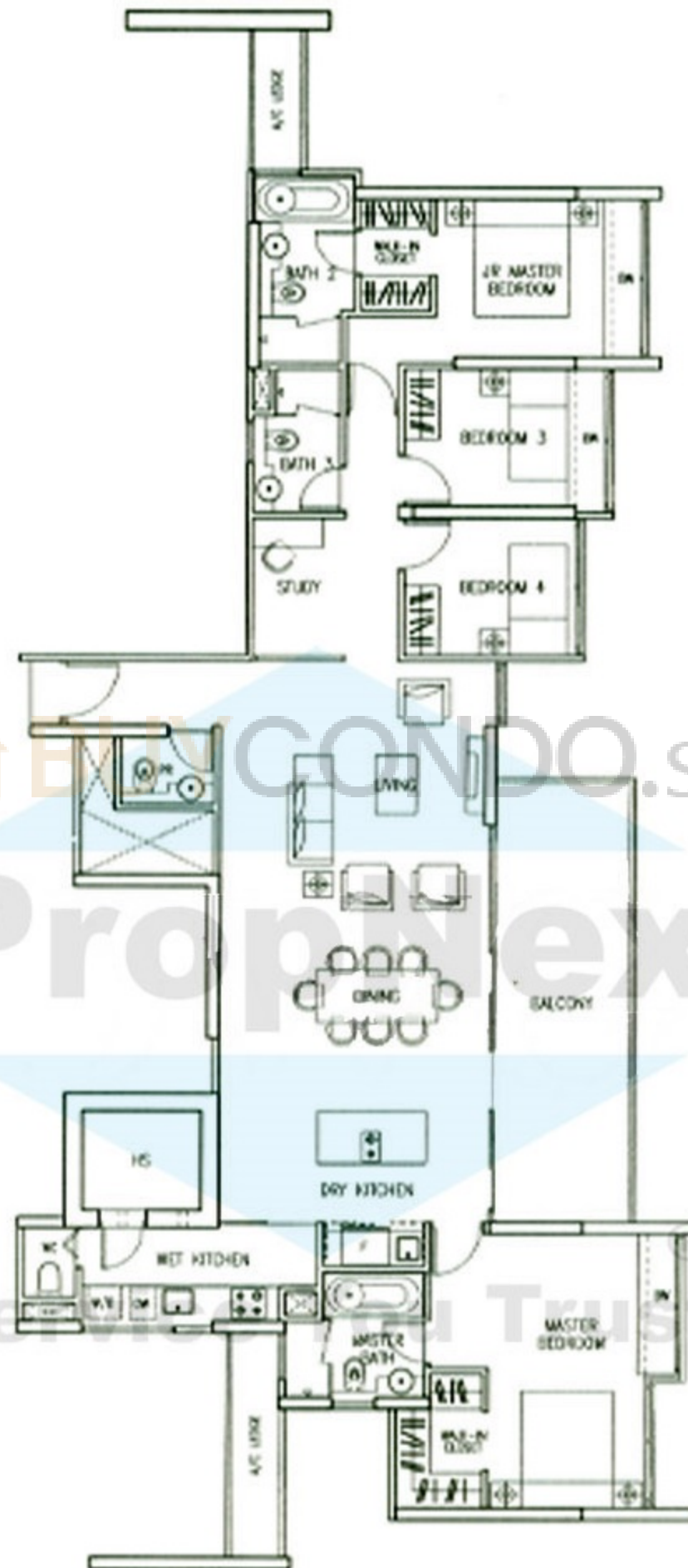
The plans are subject to change as may be required or approved by the relevant authorities. These are not drawn to scale and are for the purpose of visual presentation of the different layouts that are available. Areas are estimates only and are subject to final survey.

4 Bedroom Executive Suite

TYPE 4C

168 sq m (1,808 sq ft)

#32-06 - #33-06



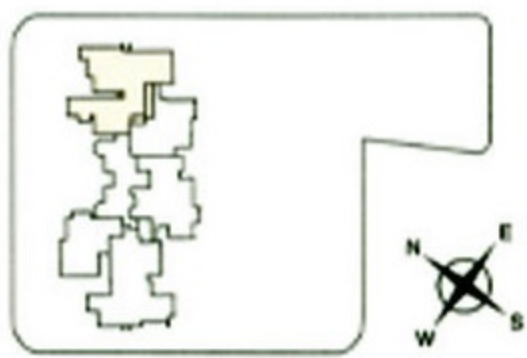
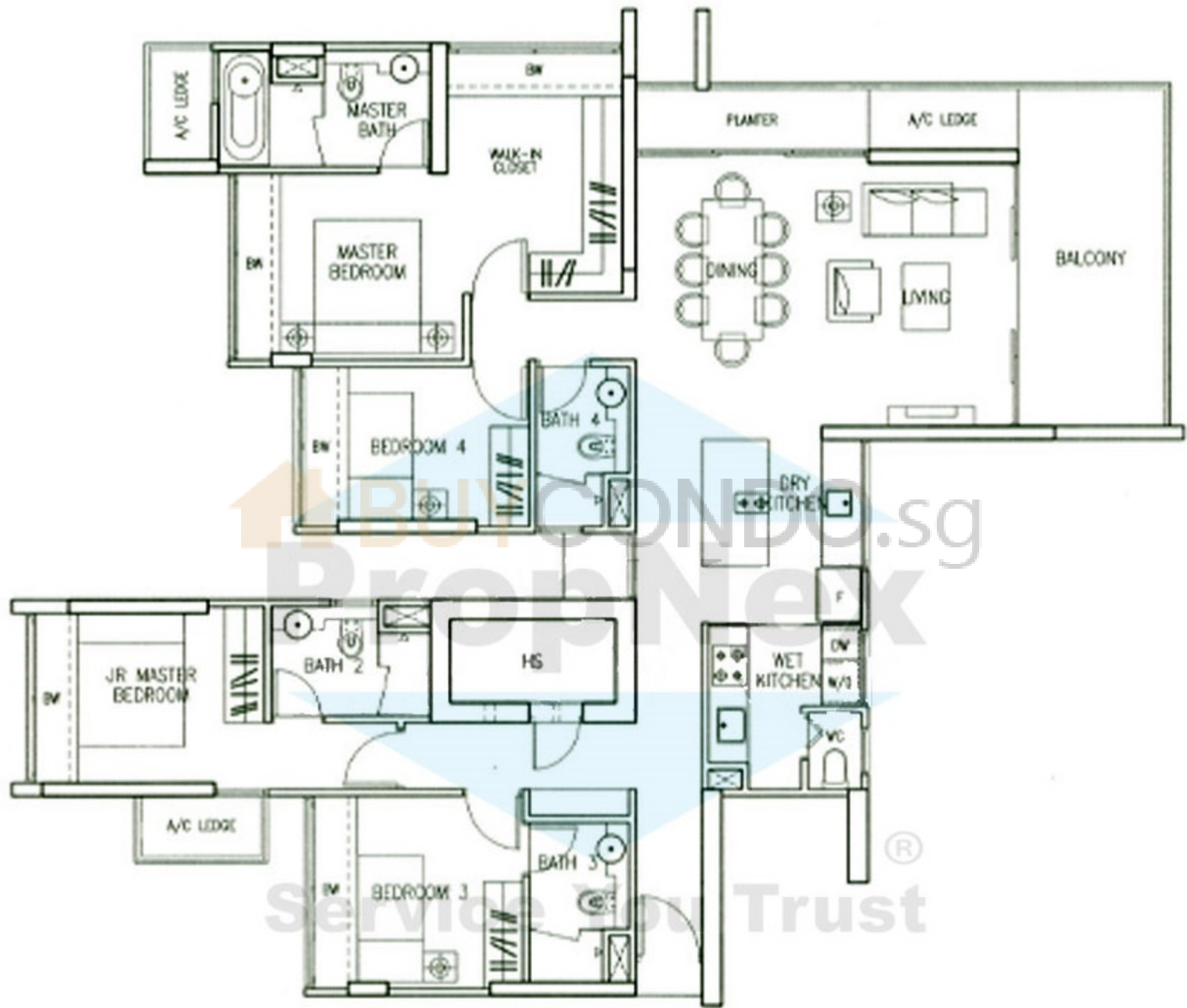
The plans are subject to change as may be required or approved by the relevant authorities. These are not drawn to scale and are for the purpose of visual presentation of the different layouts that are available. Areas are estimates only and are subject to final survey.

4 Bedroom Executive Suite

TYPE 4D-1

148 sq m (1,593 sq ft)

#23-05 - #33-05



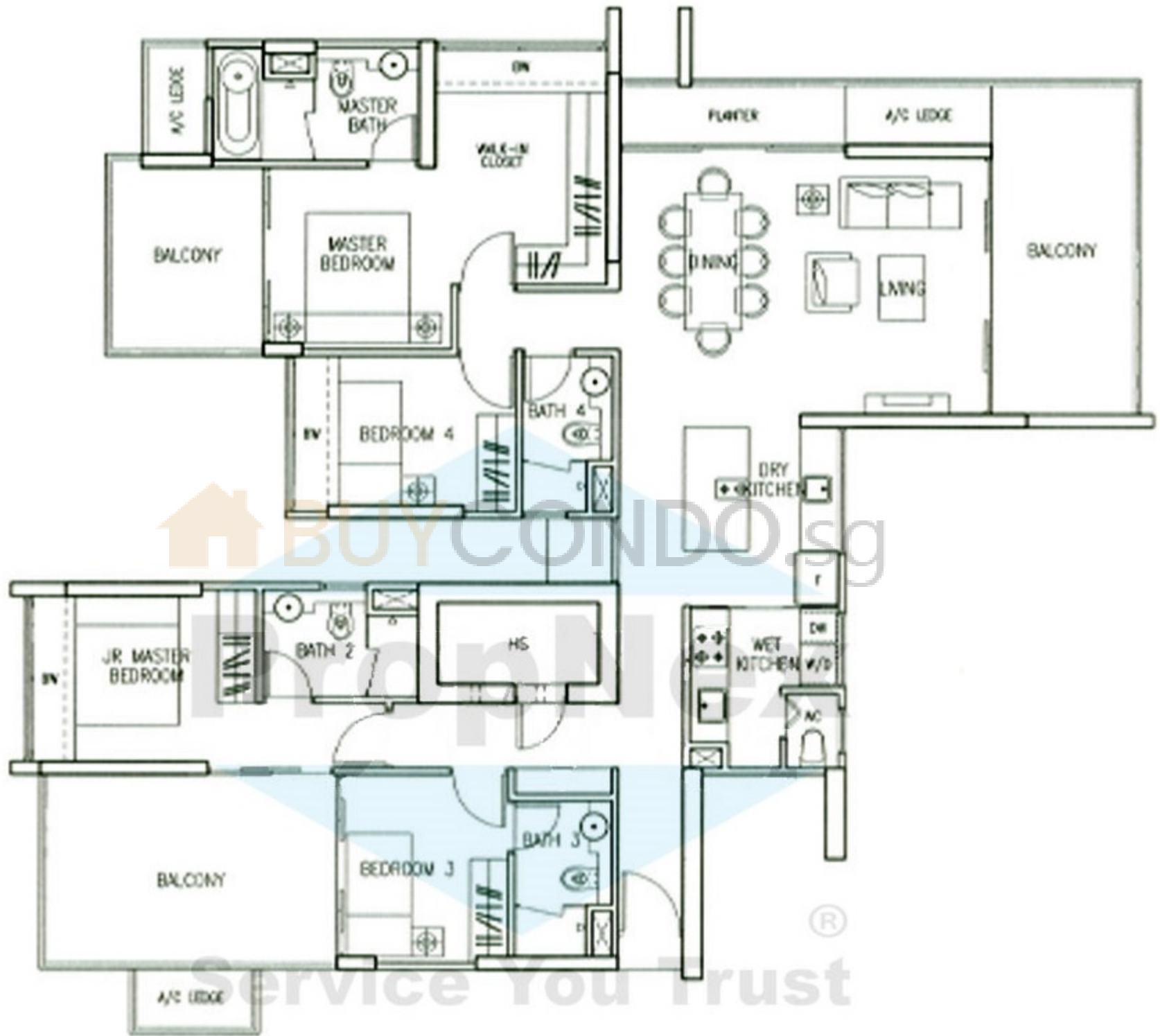
The plans are subject to change as may be required or approved by the relevant authorities. These are not drawn to scale and are for the purpose of visual presentation of the different layouts that are available. Areas are estimates only and are subject to final survey.

4 Bedroom Executive Suite

TYPE 4D

166 sq m (1,787 sq ft)

#22-05



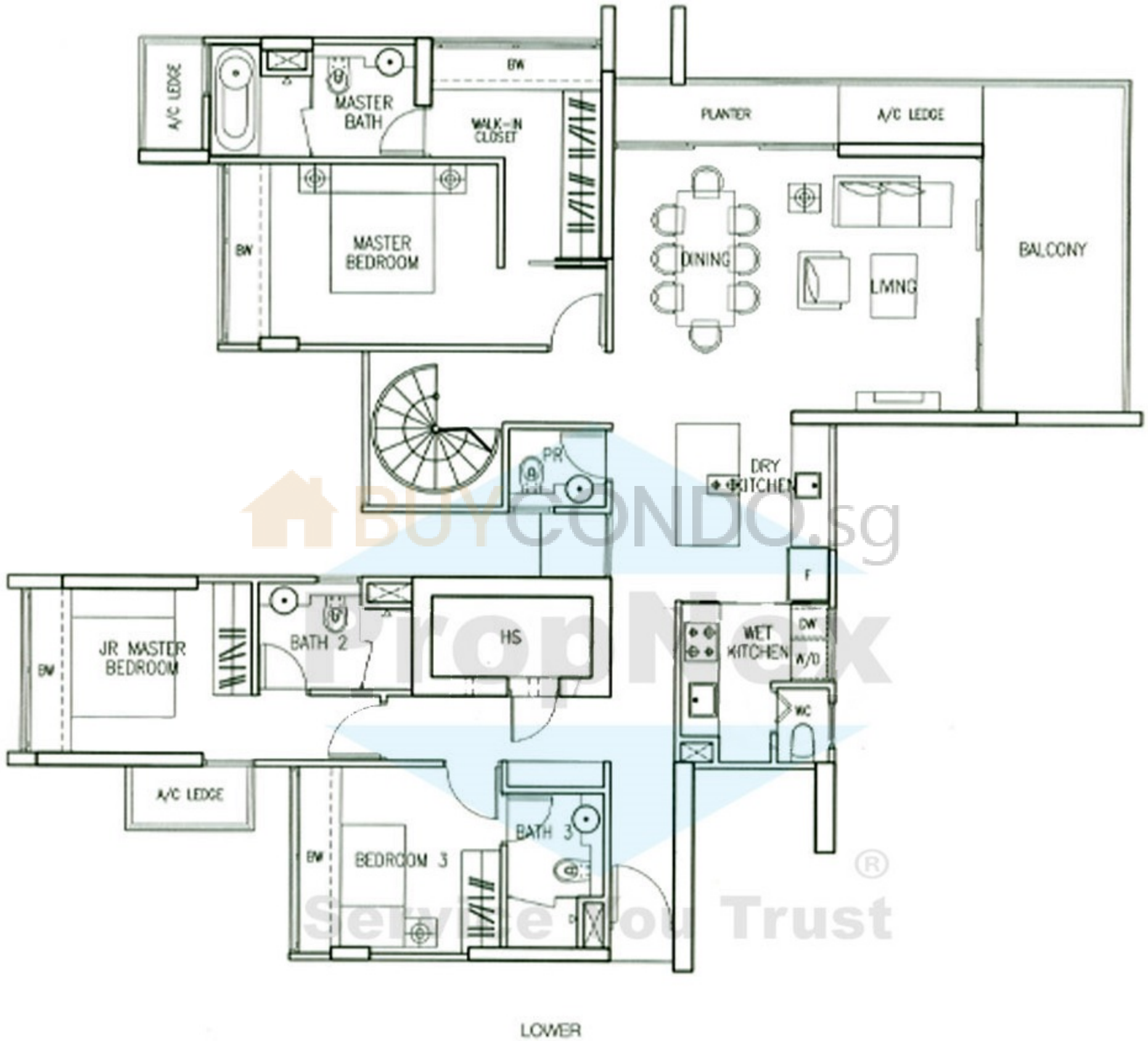
The plans are subject to change as may be required or approved by the relevant authorities. These are not drawn to scale and are for the purpose of visual presentation of the different layouts that are available. Areas are estimates only and are subject to final survey.

Penthouse

TYPE 4E

244 sq m (2,626 sq ft)

#34-05



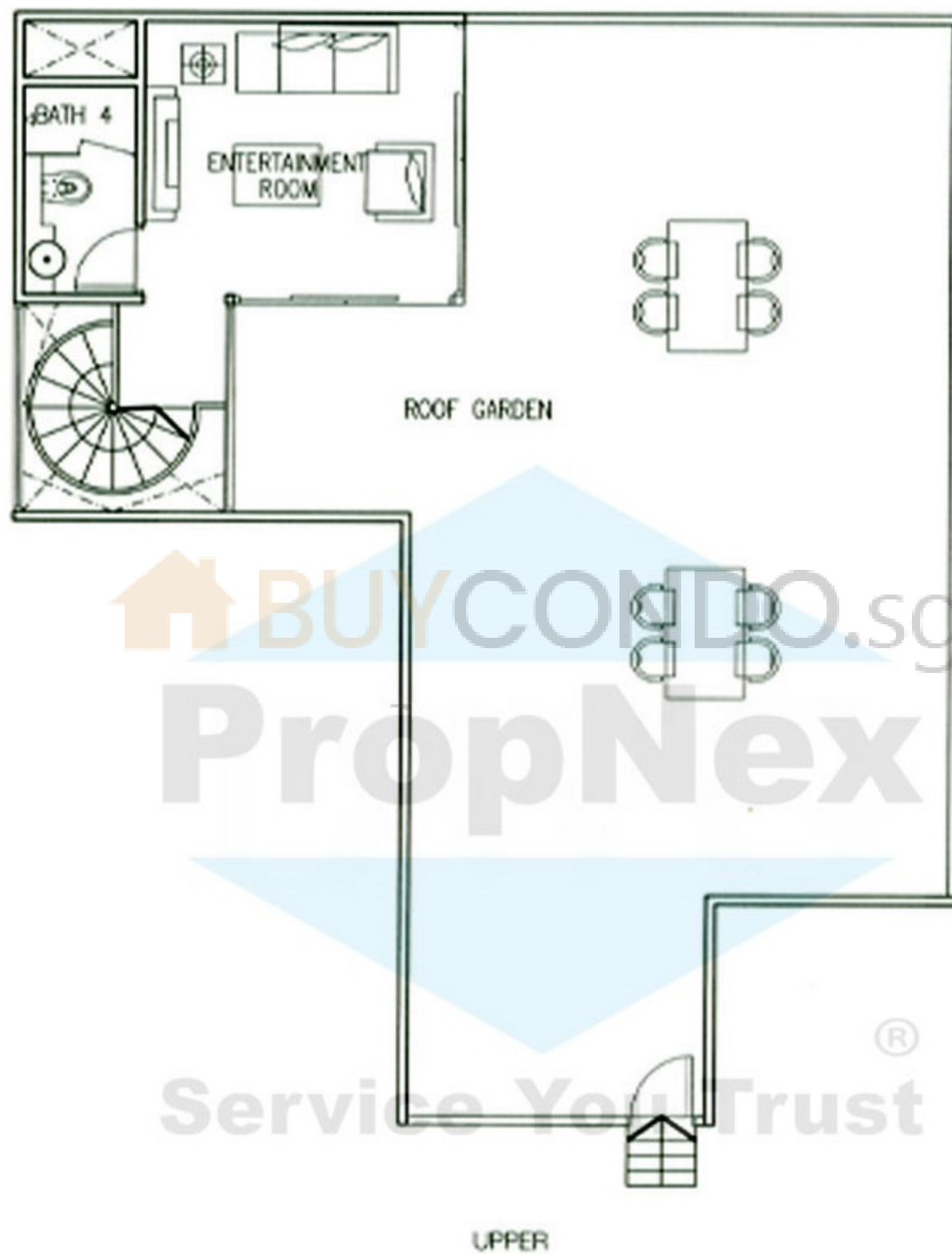
The plans are subject to change as may be required or approved by the relevant authorities. These are not drawn to scale and are for the purpose of visual presentation of the different layouts that are available. Areas are estimates only and are subject to final survey.

Penthouse

TYPE 4E

244 sq m (2,626 sq ft)

#34-05



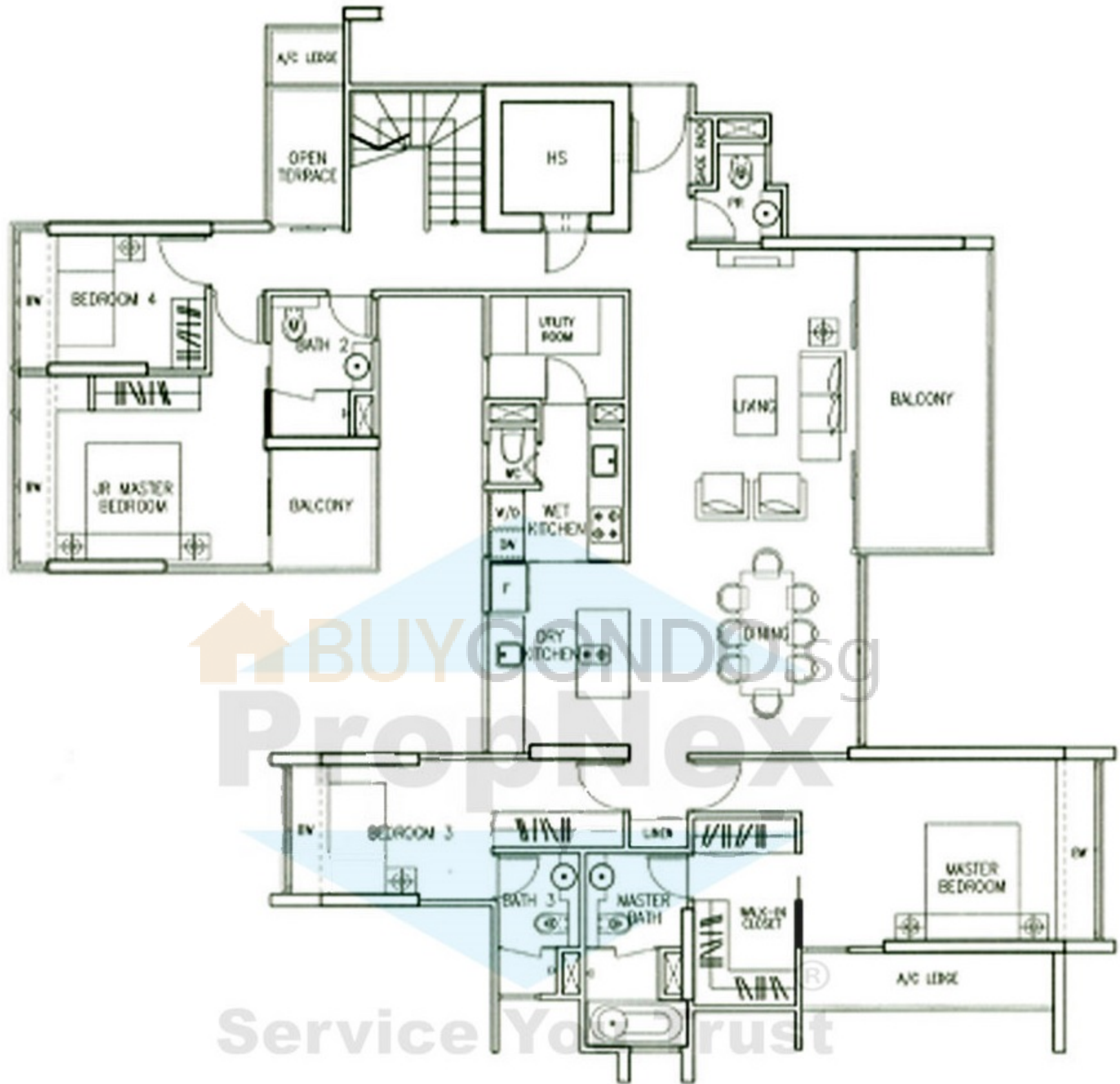
The plans are subject to change as may be required or approved by the relevant authorities. These are not drawn to scale and are for the purpose of visual presentation of the different layouts that are available. Areas are estimates only and are subject to final survey.

Penthouse

TYPE 5A

269 sq m (2,896 sq ft)

#34-02



LOWER



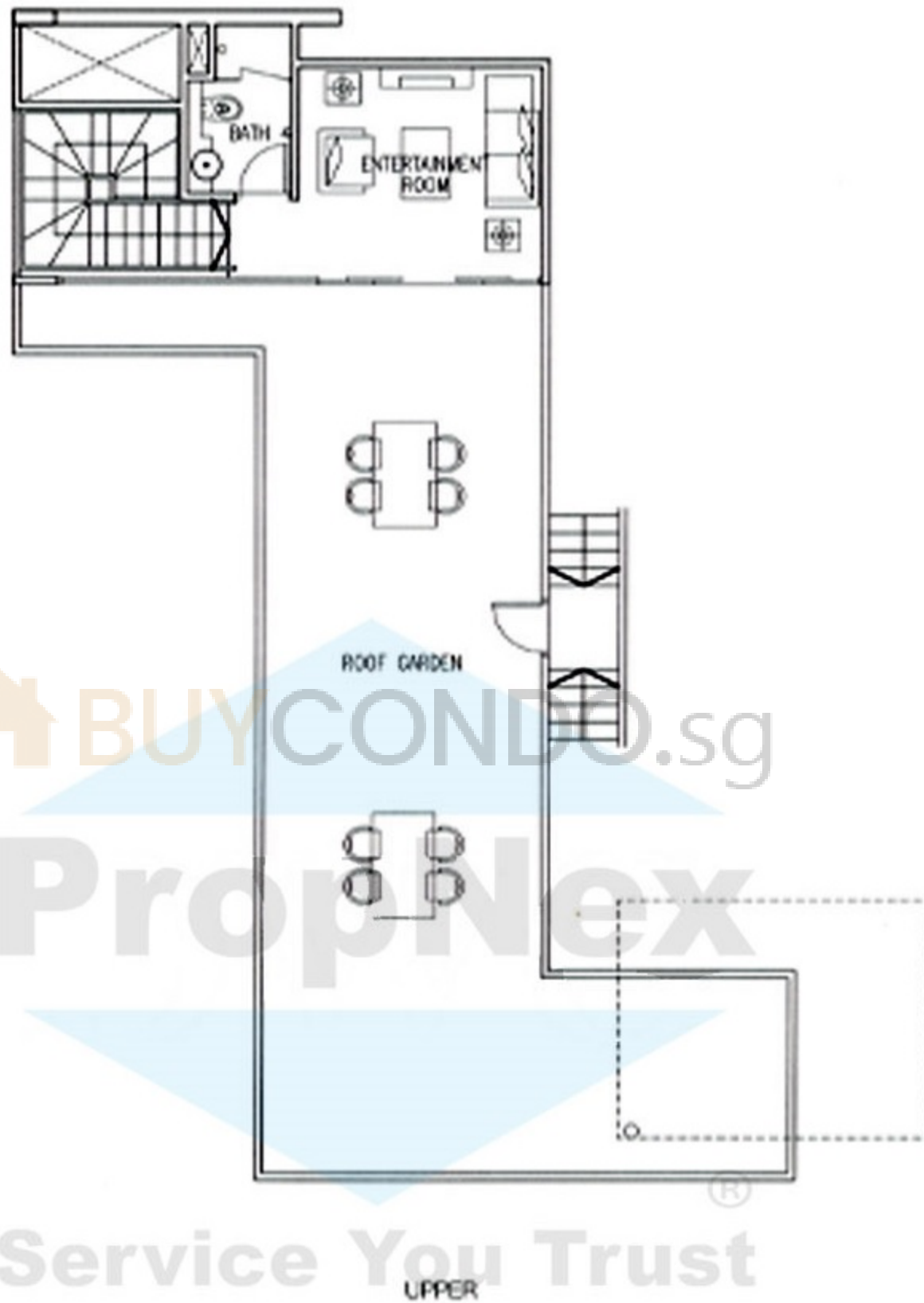
The plans are subject to change as may be required or approved by the relevant authorities. These are not drawn to scale and are for the purpose of visual presentation of the different layouts that are available. Areas are estimates only and are subject to final survey.

Penthouse

TYPE 5A

269 sq m (2,896 sq ft)

#34-02



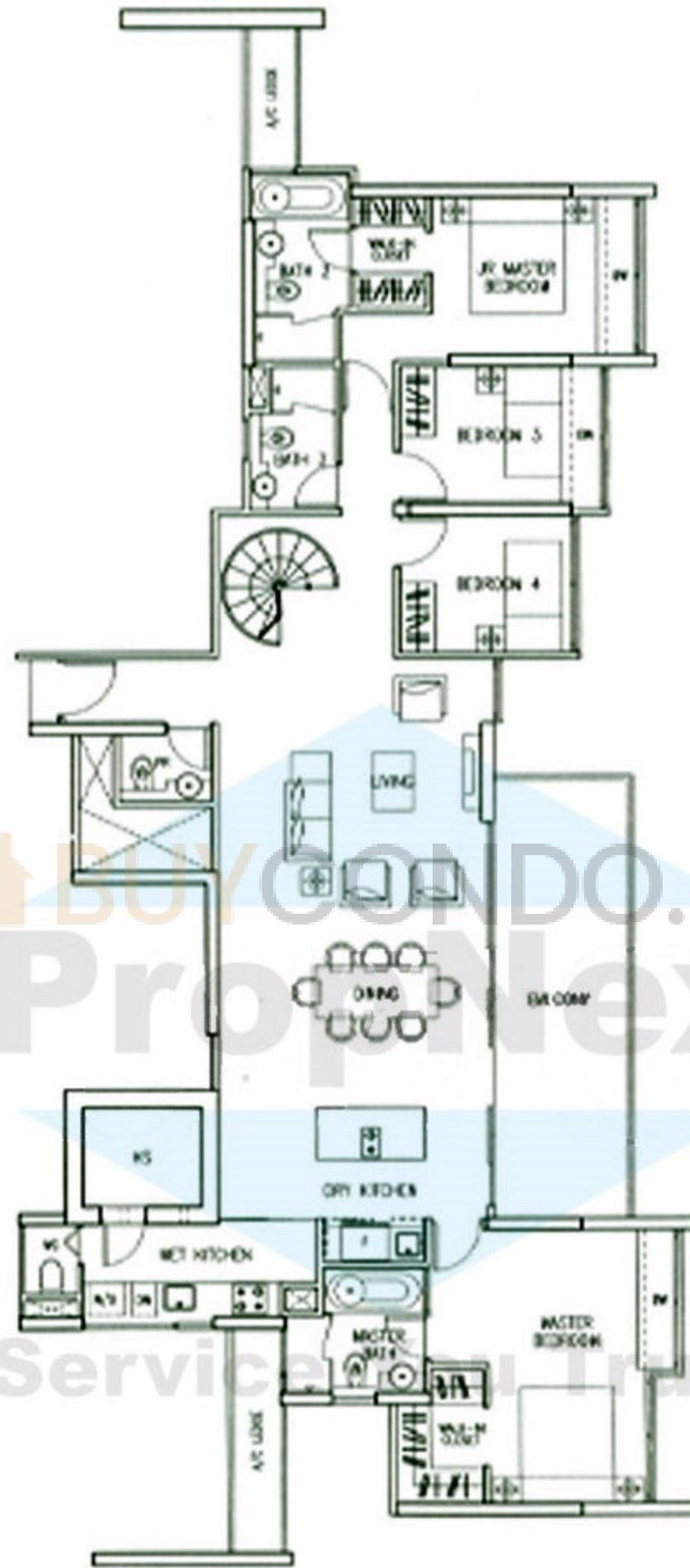
The plans are subject to change as may be required or approved by the relevant authorities. These are not drawn to scale and are for the purpose of visual presentation of the different layouts that are available. Areas are estimates only and are subject to final survey.

Penthouse

TYPE 5B

237 sq m (2,551sq ft)

#34-06



LOWER



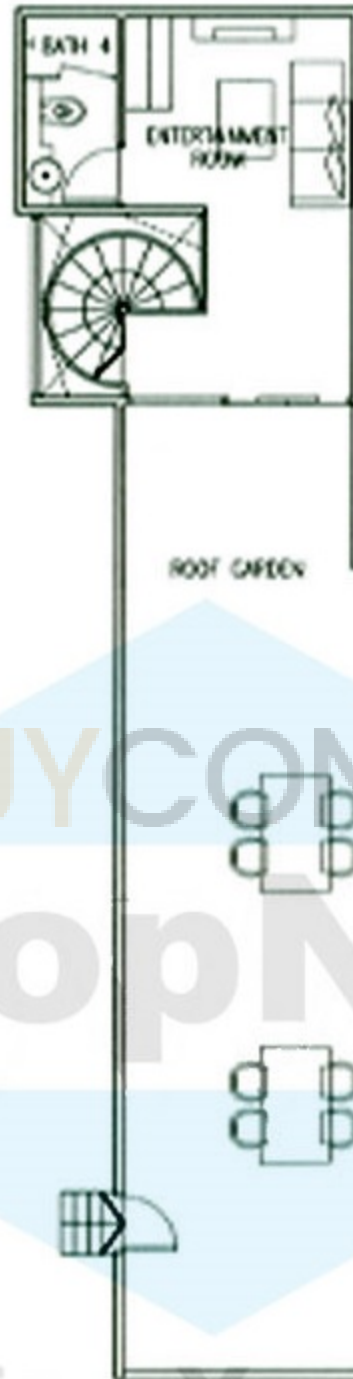
The plans are subject to change as may be required or approved by the relevant authorities. These are not drawn to scale and are for the purpose of visual presentation of the different layouts that are available. Areas are estimates only and are subject to final survey.


Penthouse

TYPE 5B

237 sq m (2,551 sq ft)

#34-06



 BUY CONDO.sg
PropNex
Service You Trust[®]

UPPER



The plans are subject to change as may be required or approved by the relevant authorities. These are not drawn to scale and are for the purpose of visual presentation of the different layouts that are available. Areas are estimates only and are subject to final survey.