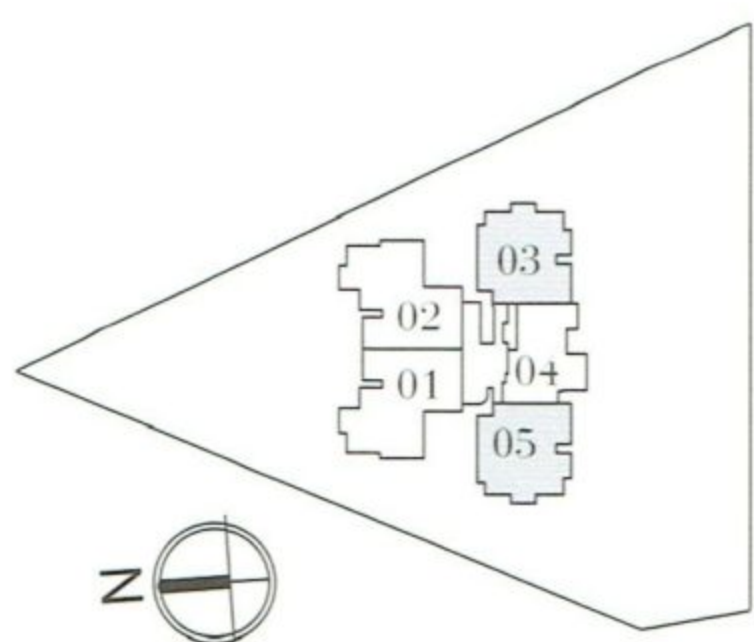
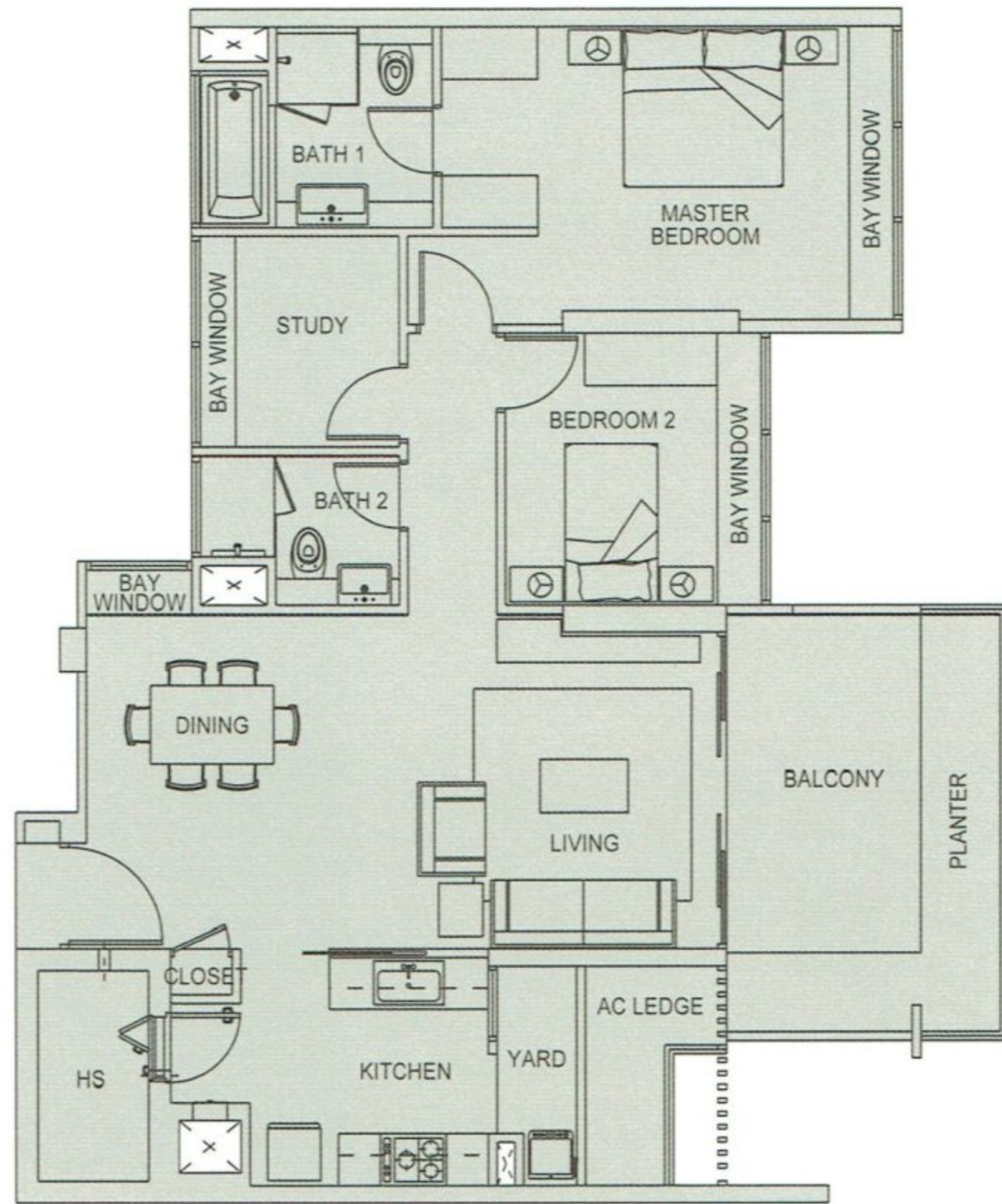
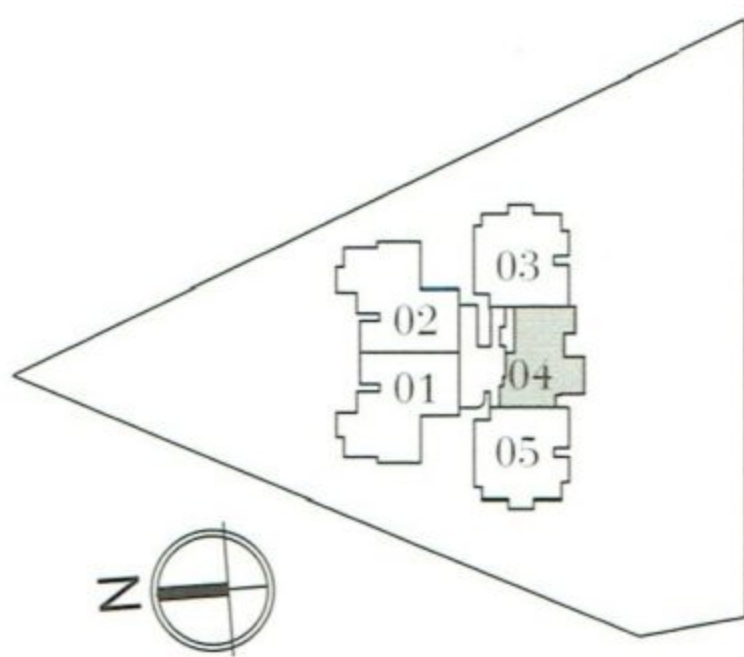


Roof Terrace



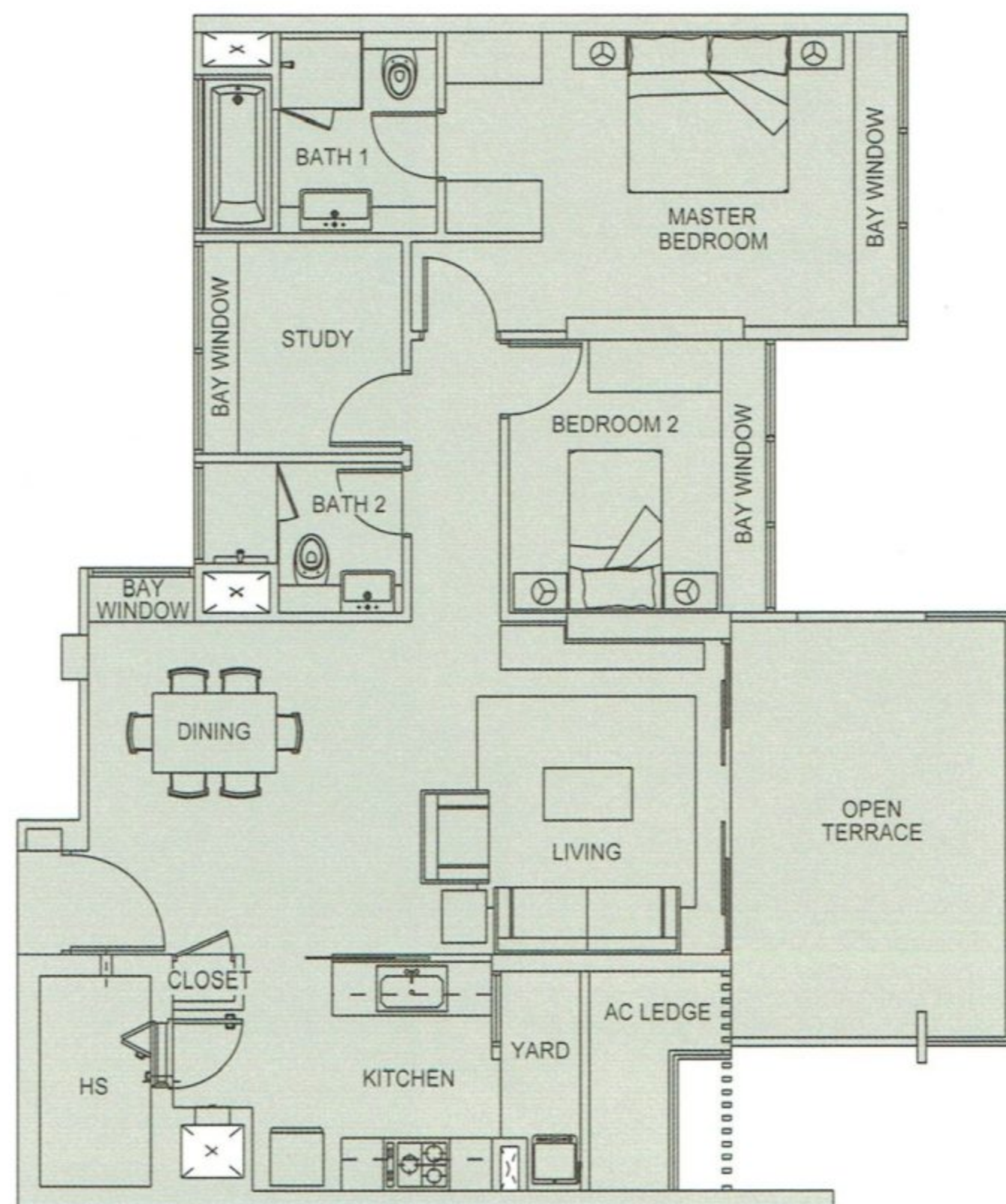
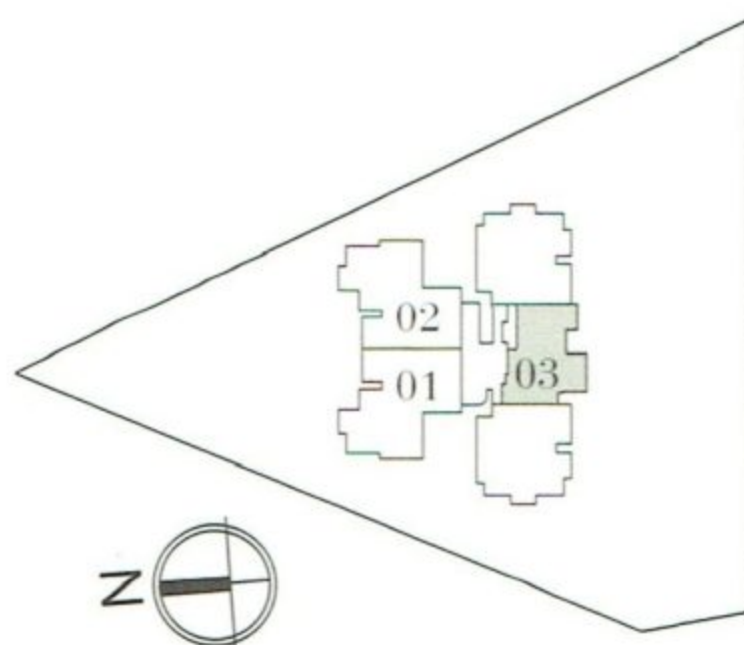
Type A

114 sqm / 1227 sqft
 #04-04 to #23-04



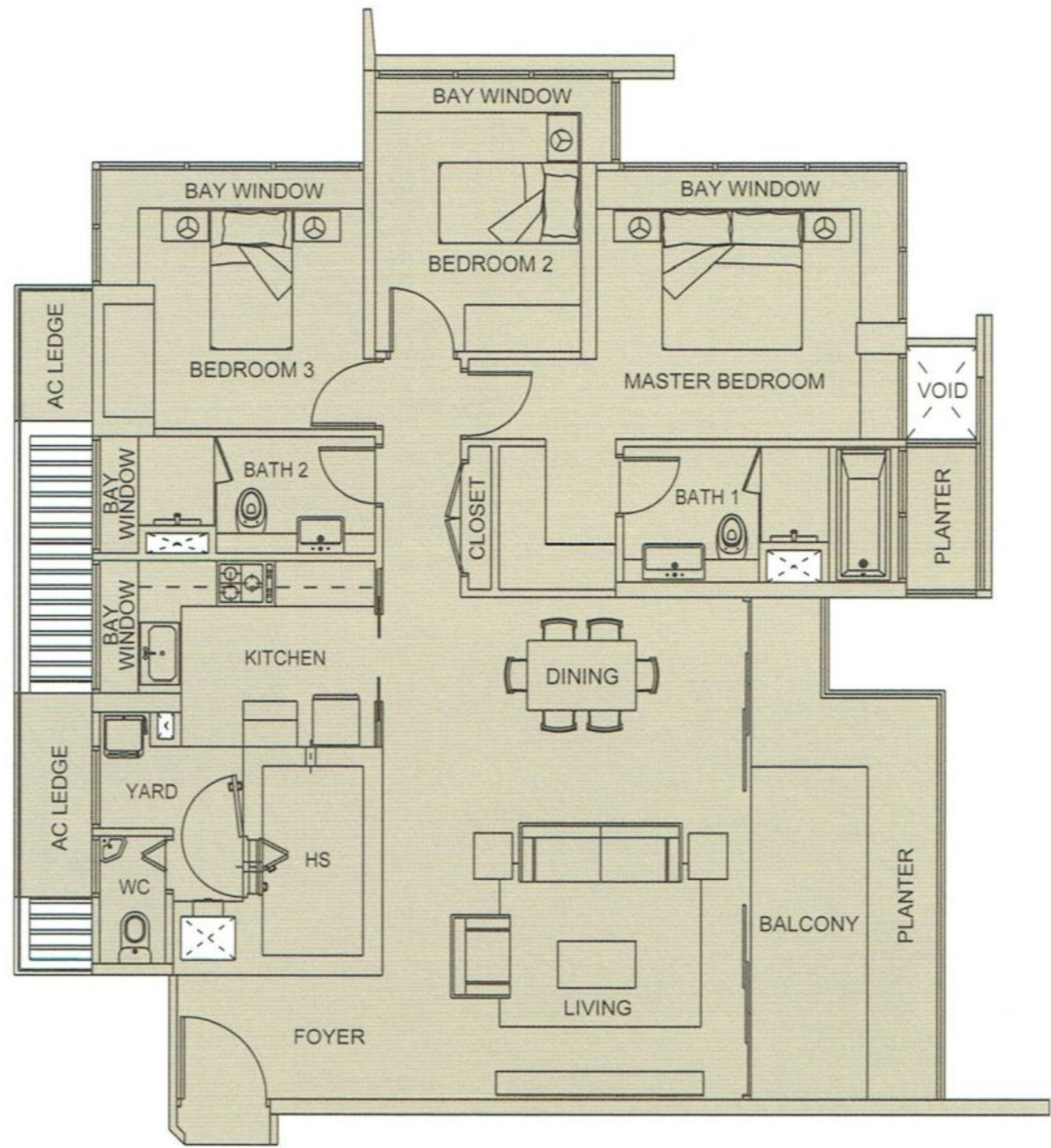
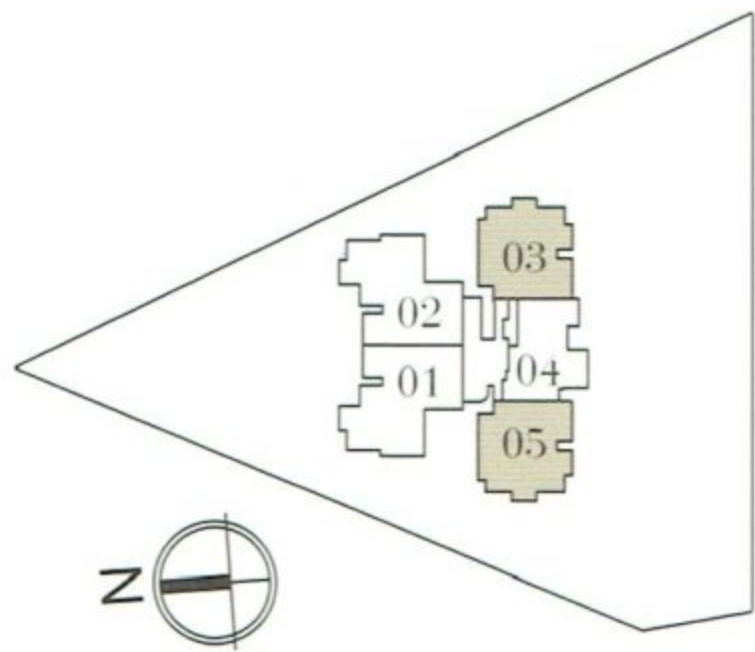
Type A1

114 sqm / 1227 sqft
 (including open terrace of 16 sqm)
 #24-03



Type B1

137 sqm / 1475 sqft
 #02-03 to #06-03,
 #02-05 to #06-05

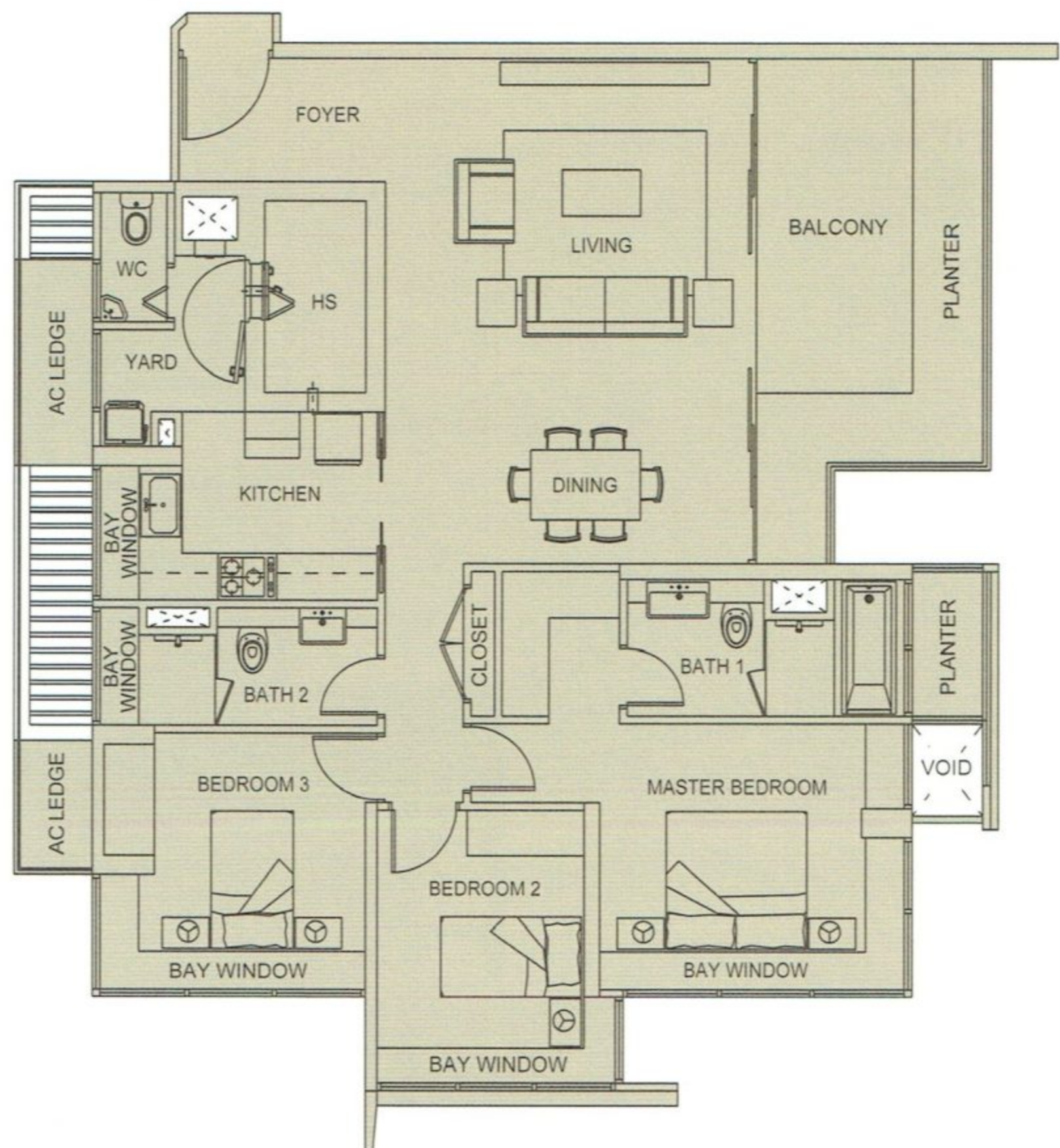
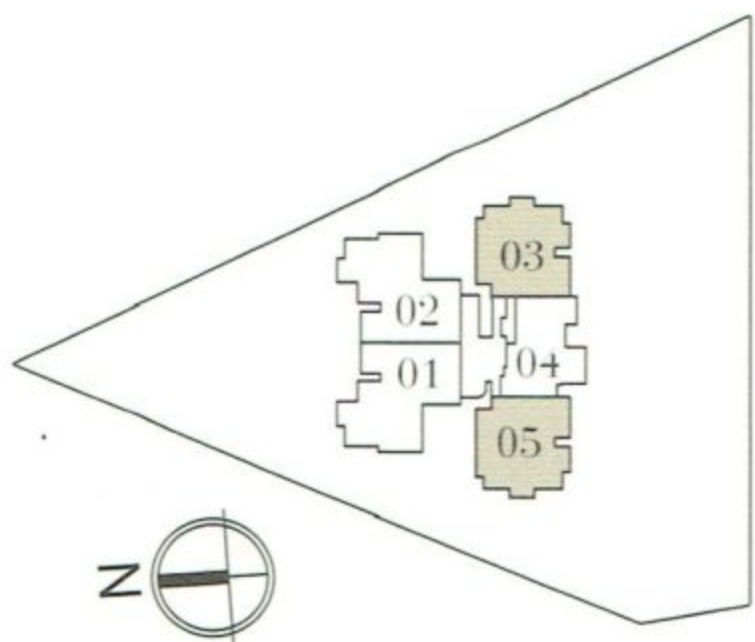


Type B2

140 sqm / 1507 sqft
 #07-03 to #21-03,
 #07-05 to #21-05

Type B2a (not shown)

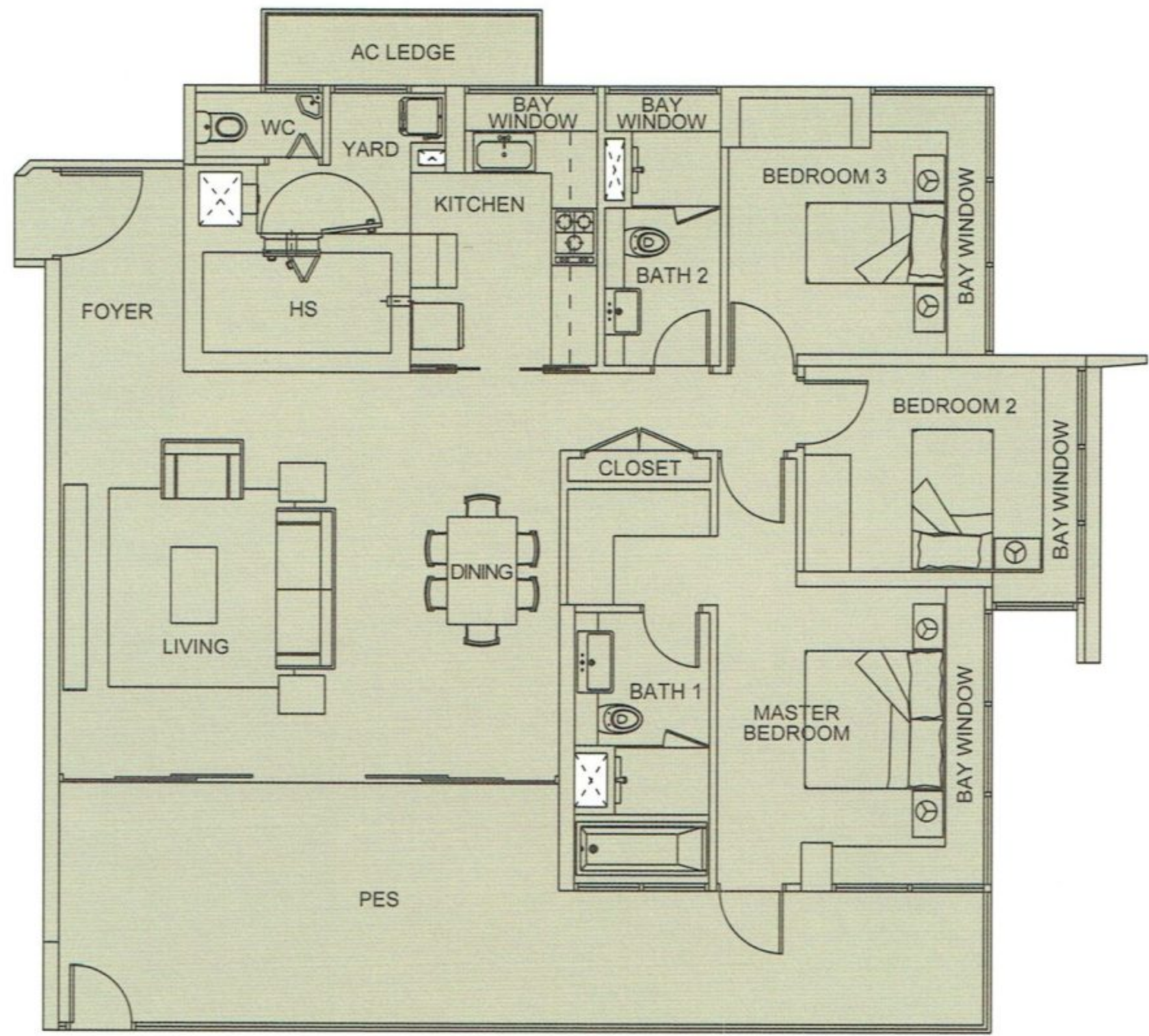
148 sqm / 1593 sqft
 (including strata void of 8 sqm)
 #22-03 and #22-05



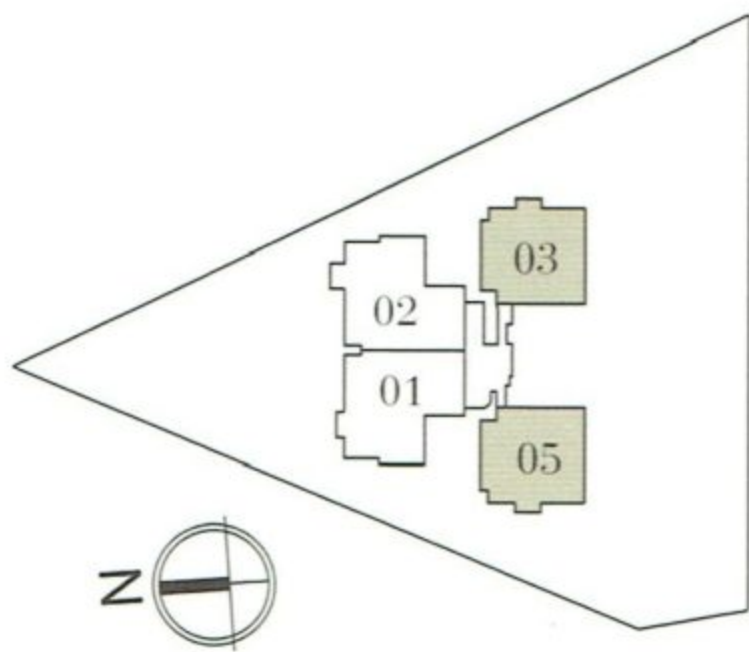
* B2 and B2a have similar layouts except for the strata void over Bedroom 2 of B2a

Type B1p

156 sqm / 1679 sqft
(including PES of 32 sqm)
#01-03 and #01-05



3 Bedroom with PES

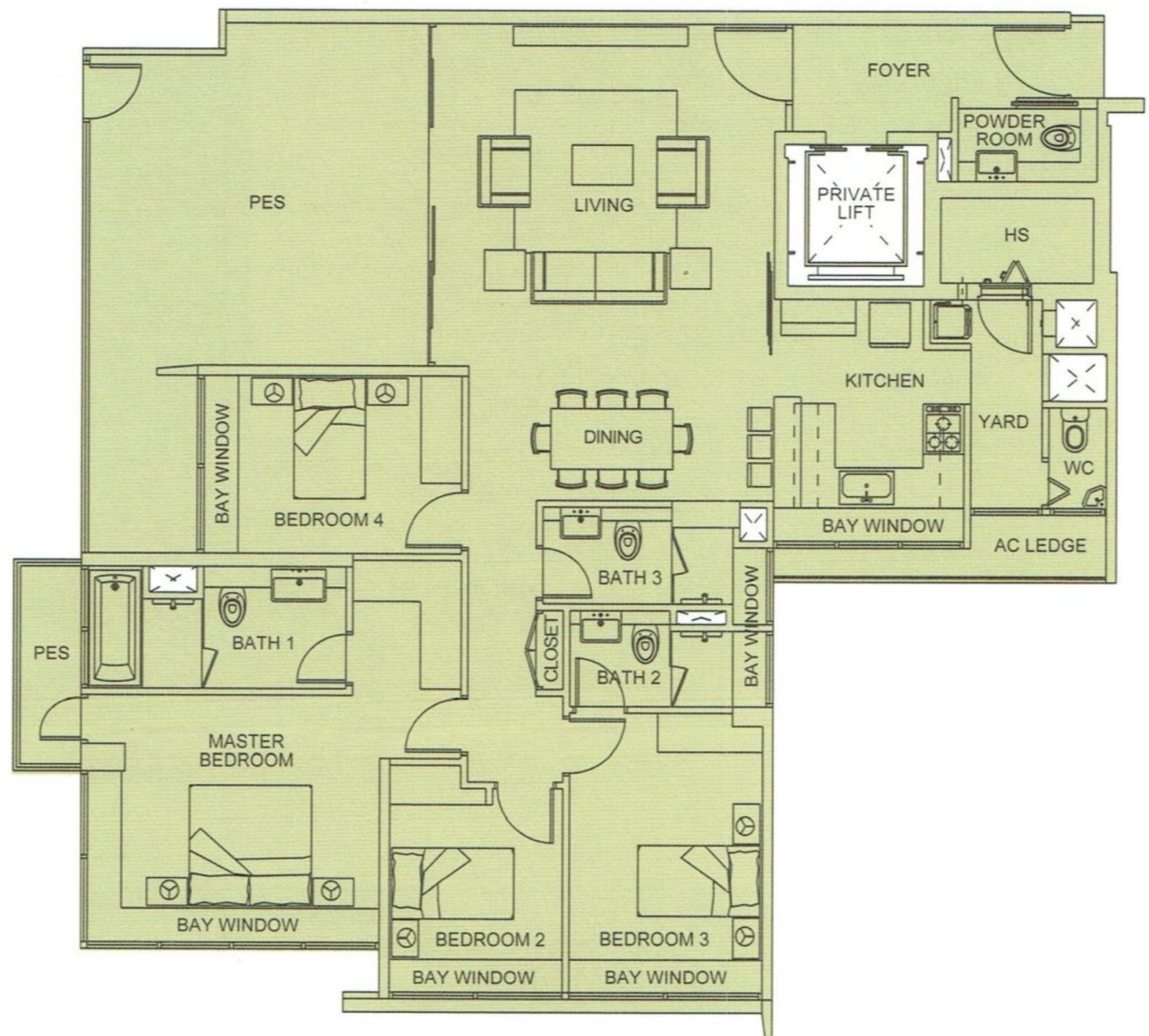


Type C1p1

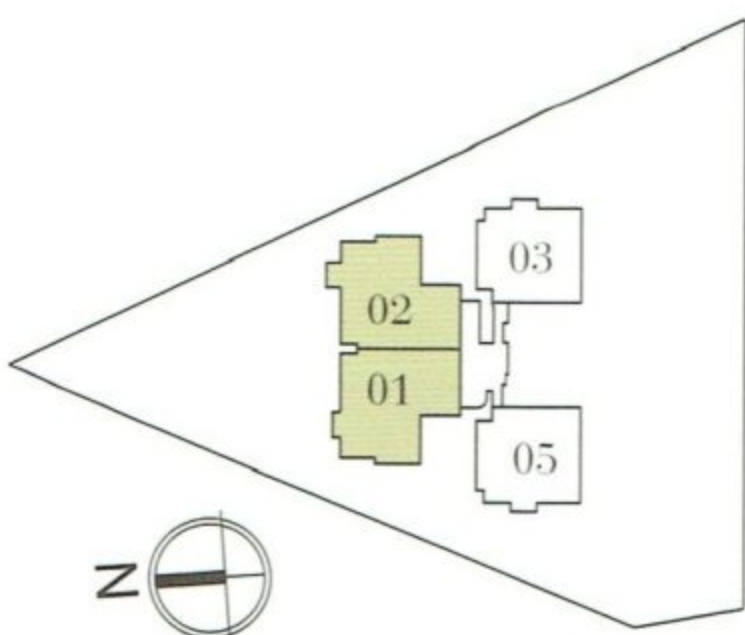
181 sqm / 1948 sqft
(including PES of 33 sqm)
#01-01

Type C1p2 (not shown)

184 sqm / 1981 sqft
(including PES of 36 sqm)
#01-02

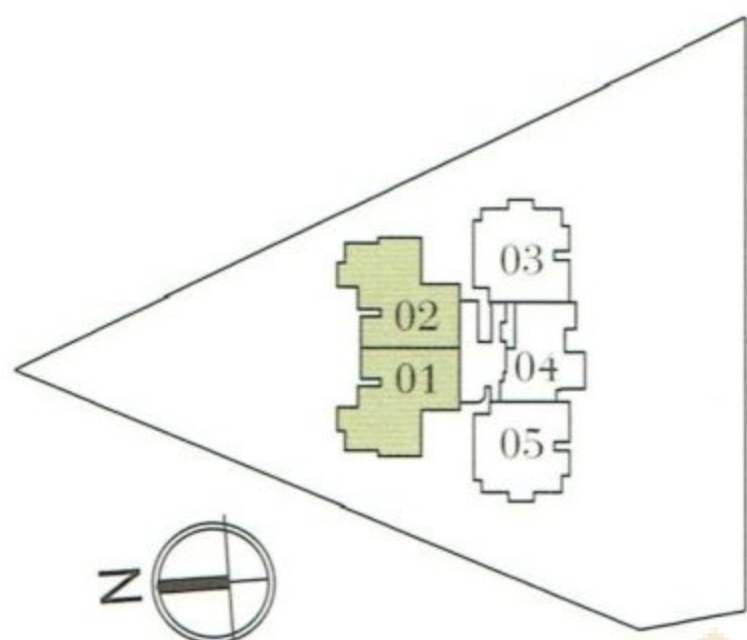
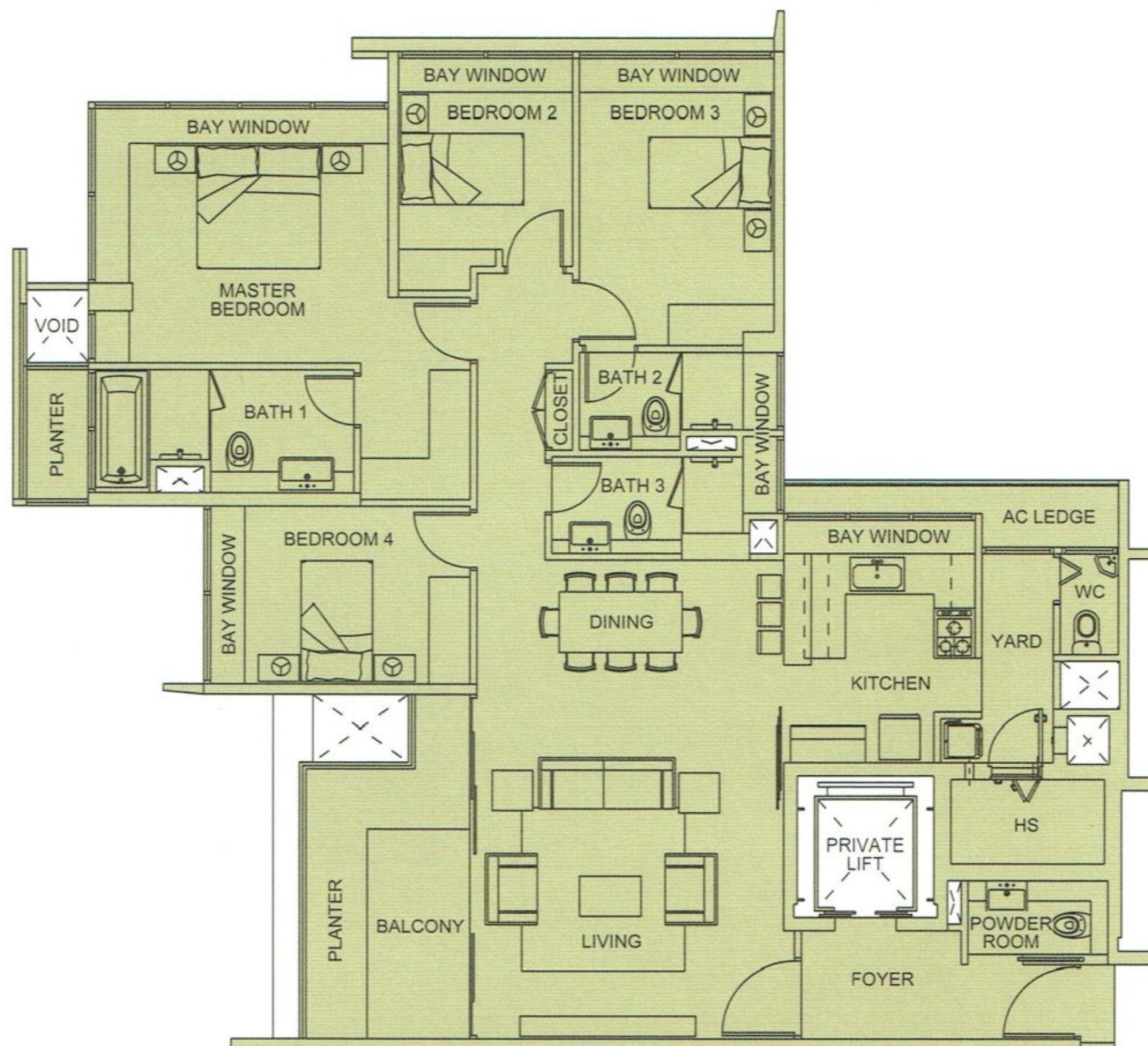


4 Bedroom with PES



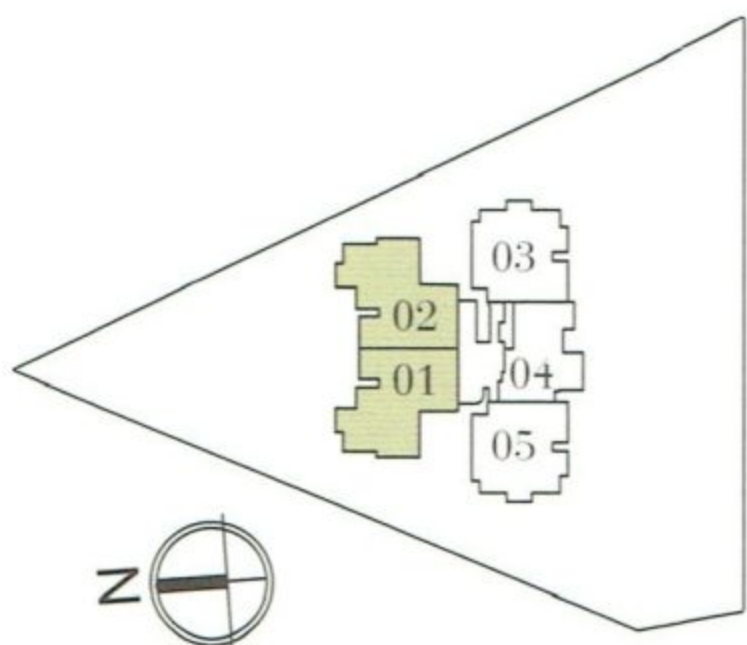
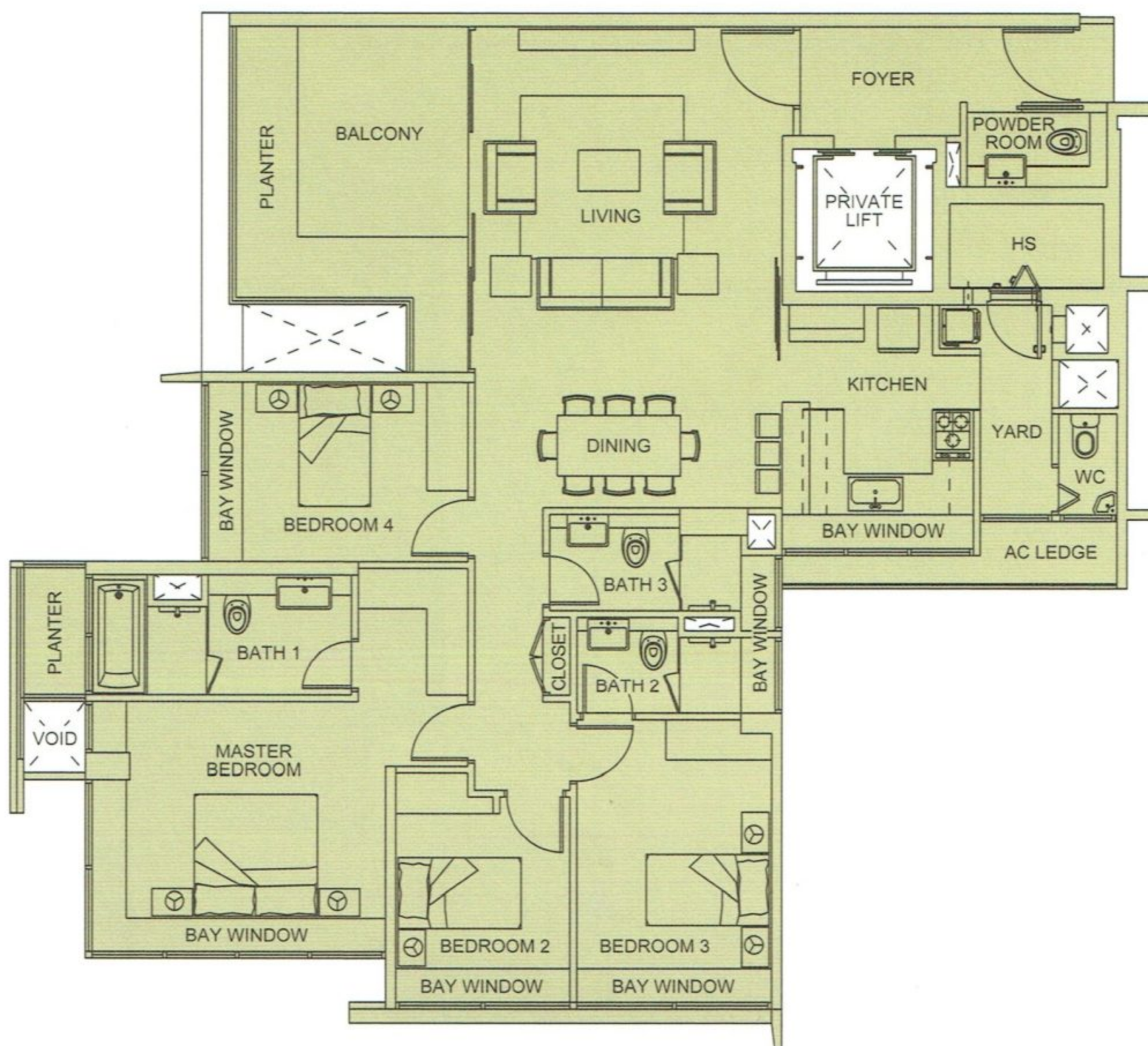
Type C1

158 sqm / 1701 sqft
 #02-01 to #06-01,
 #02-02 to #06-02



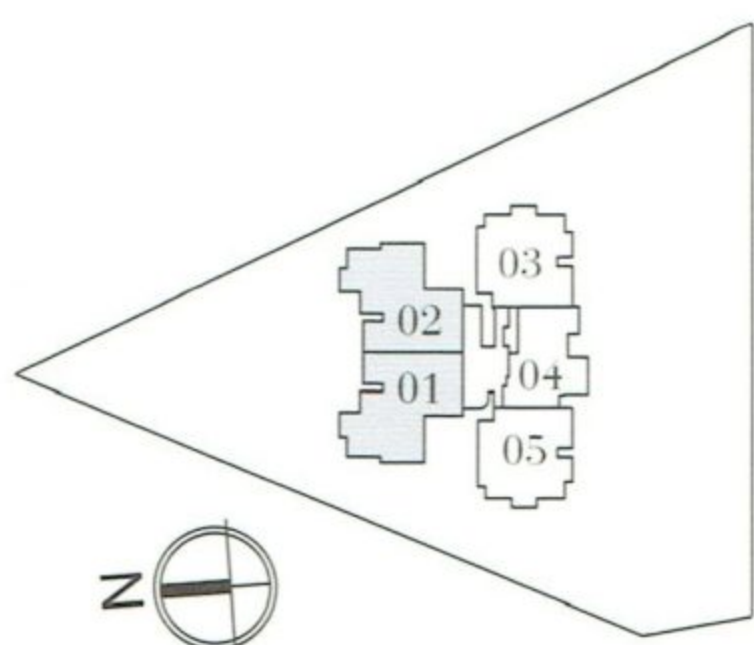
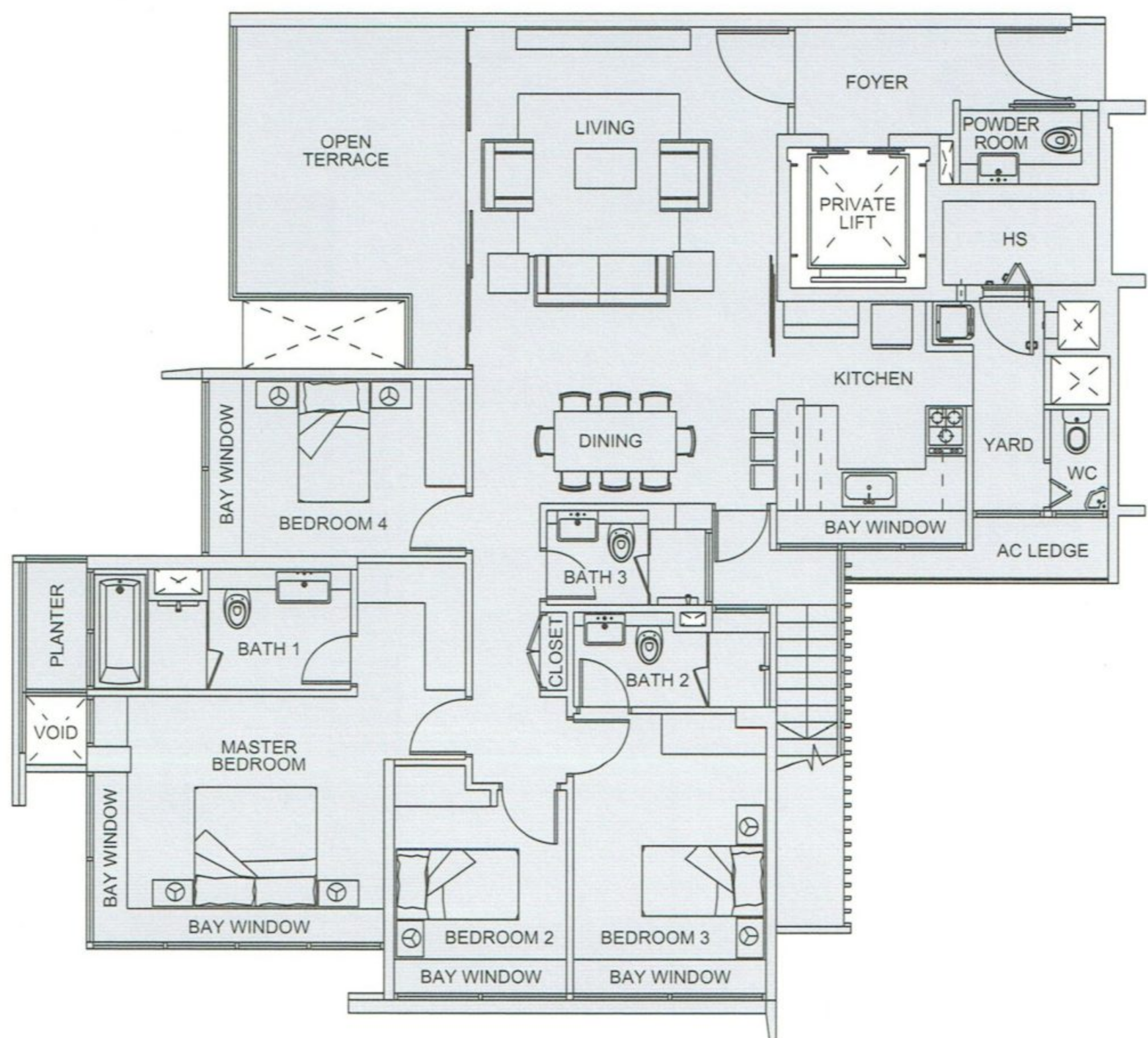
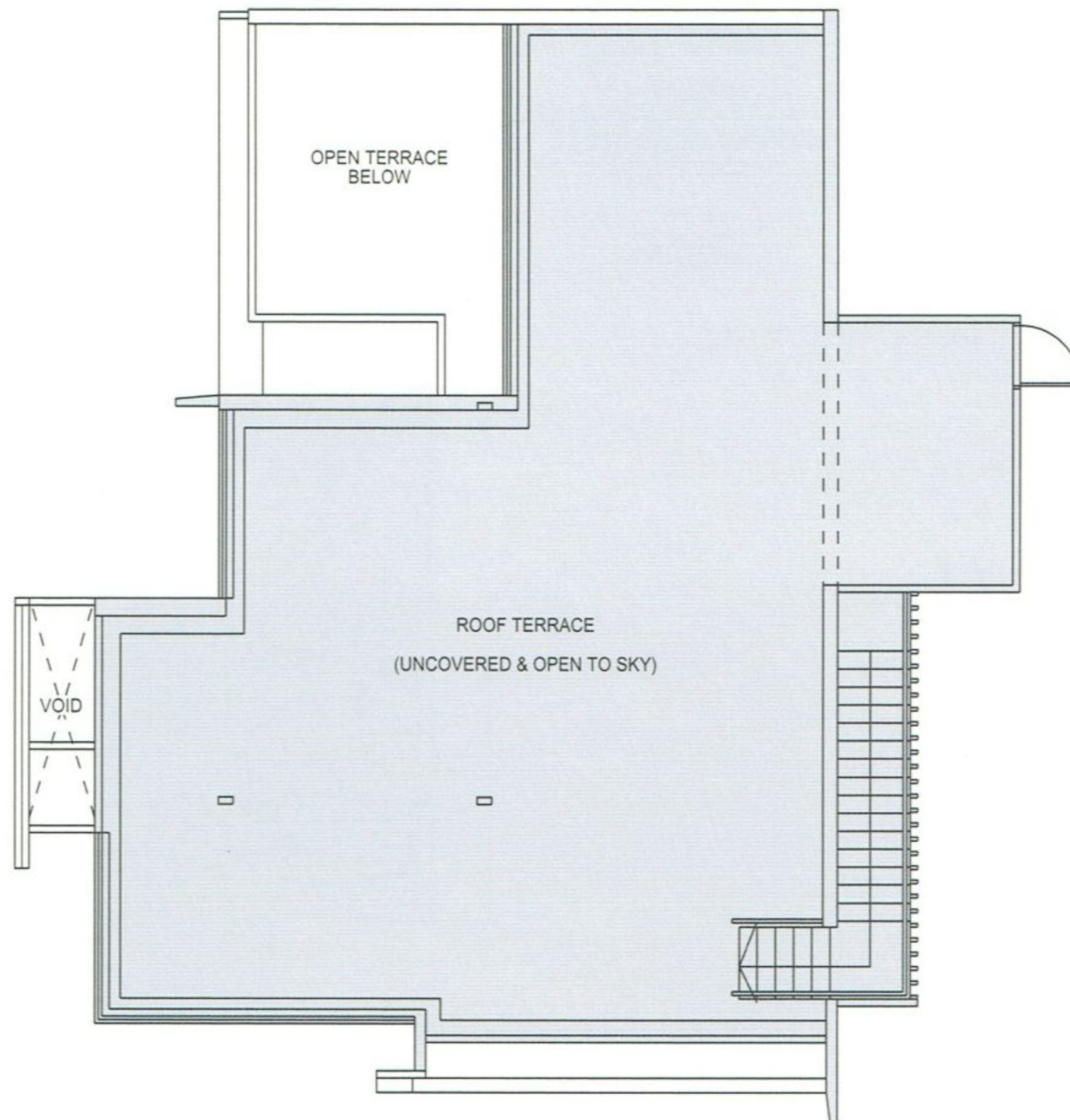
Type C2

162 sqm / 1744 sqft
 #07-01 to #23-01,
 #07-02 to #23-02



Type P1

285 sqm / 3068 sqft
(including open / roof terrace of 129 sqm)
#24-01 and #24-02



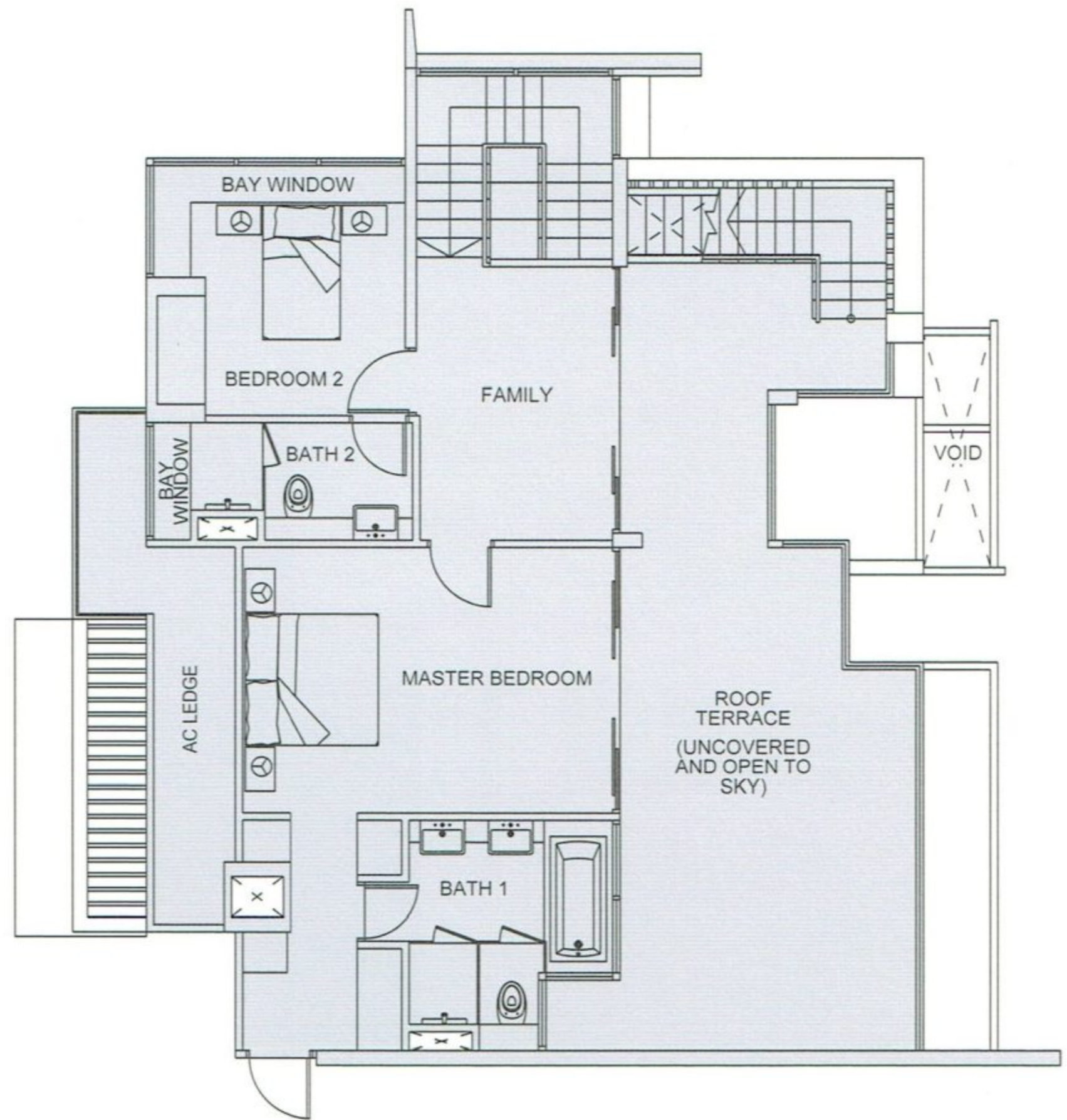
Lower Penthouse

Type P2

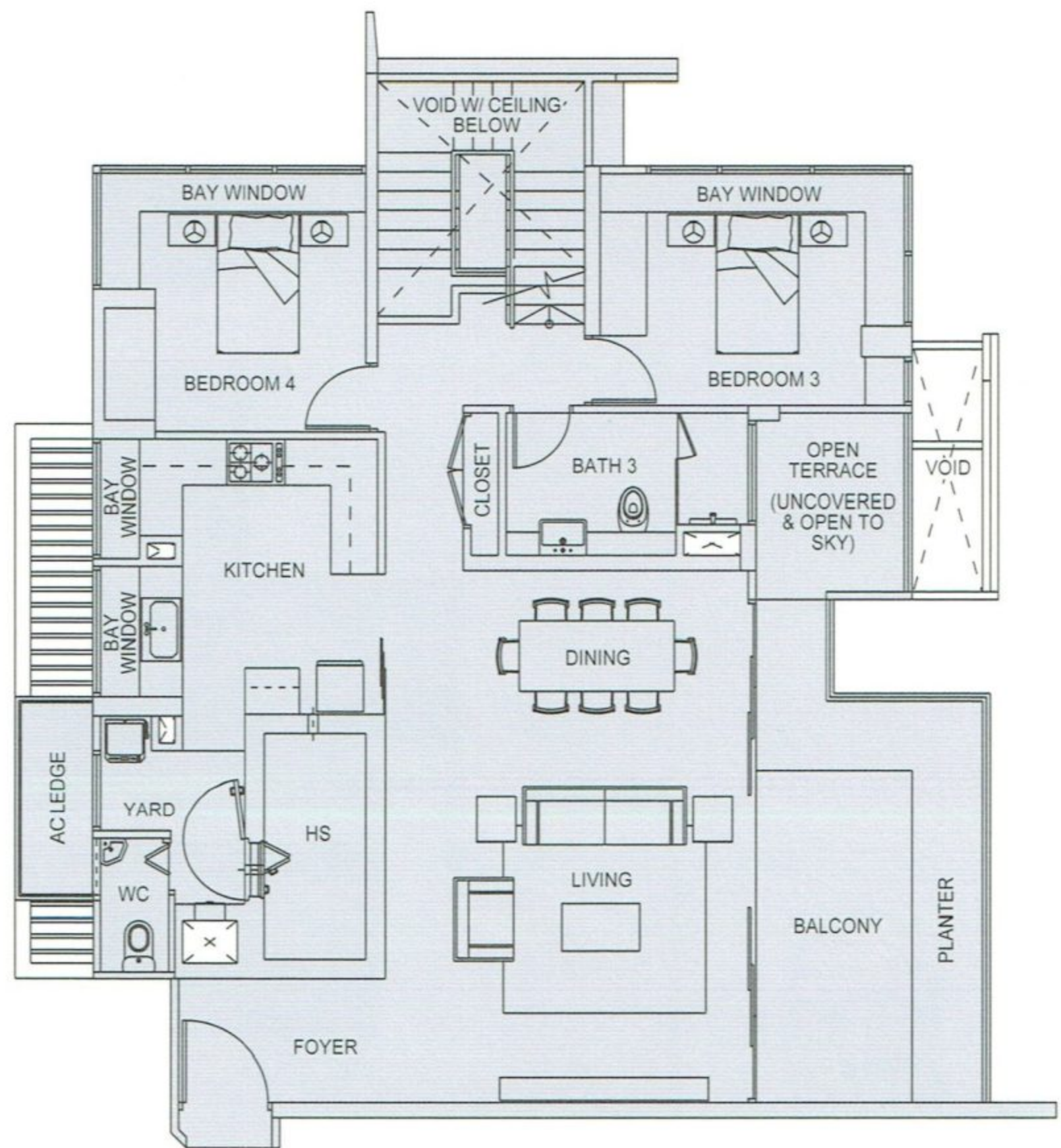
317 sqm / 3412 sqft

(including open / roof terrace of 107 sqm)

#23-03 and #23-05



Upper Penthouse



Lower Penthouse

