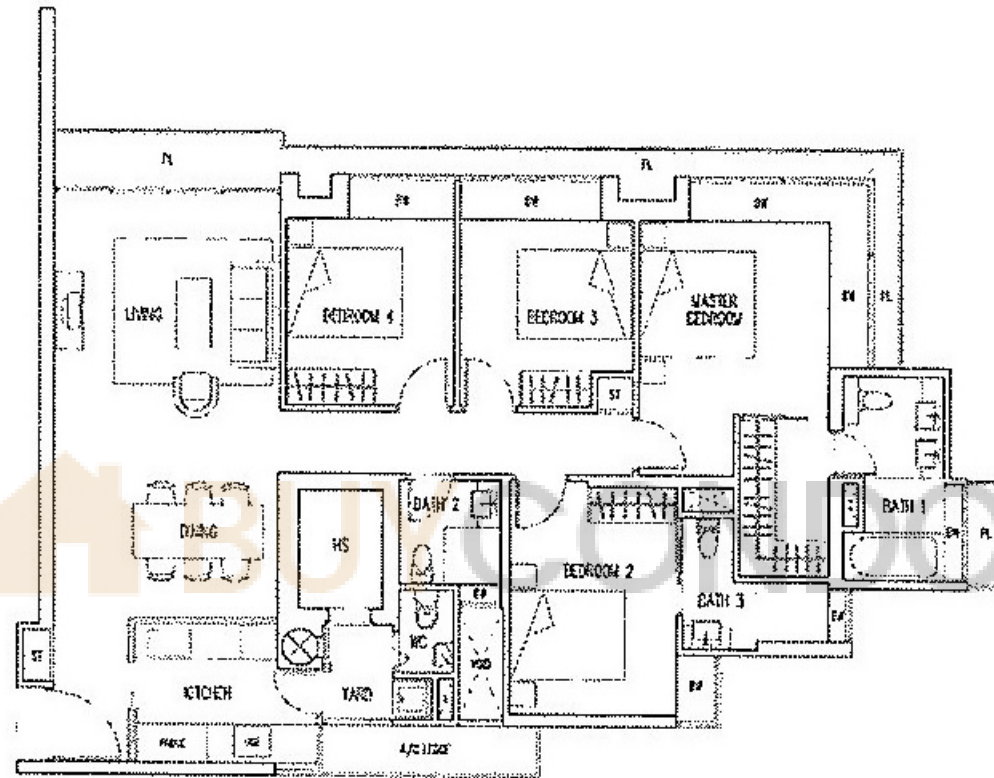


4-Bedroom Type D2c

144 sq m / 1,550 sq ft
 #16-02, #17-02
 #24-02 to #26-02



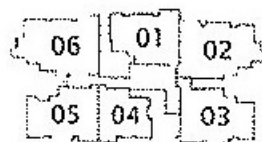
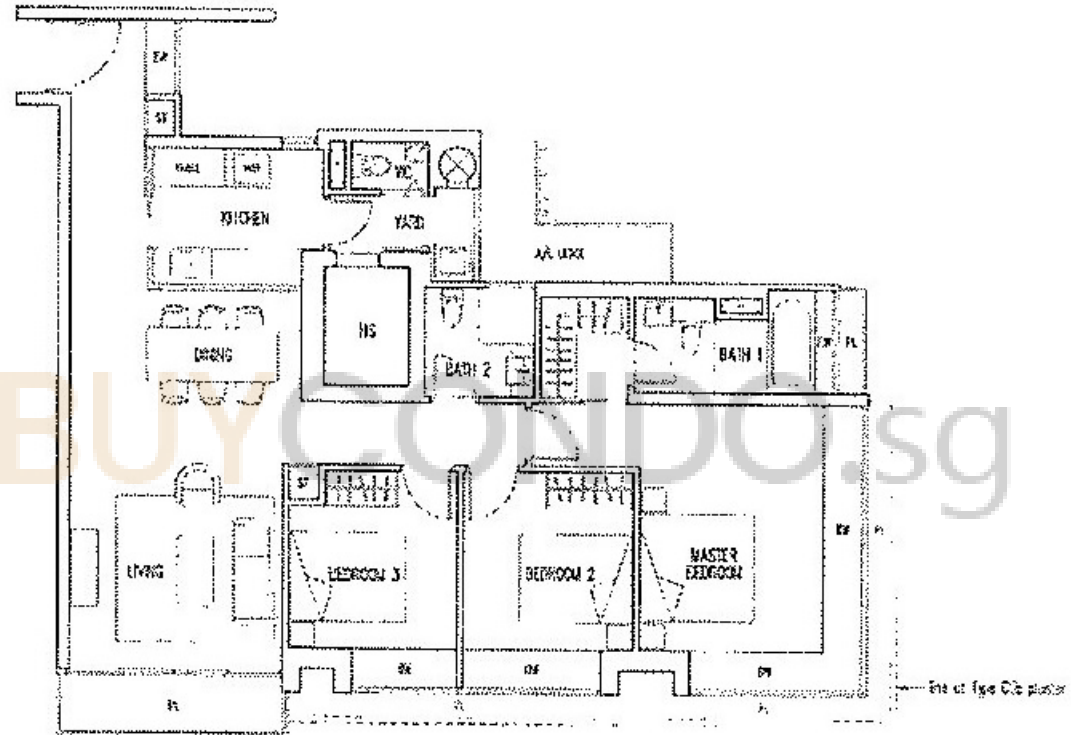
*Espace réservé à l'usage des réseaux de câblage et des réseaux de données. À l'usage des réseaux de câblage et des réseaux de données uniquement.

3-Bedroom Type C5a

120 sq m / 1,291 sq ft
#04-03 to #07-03
#12-03, #13-03
#16-03 to #19-03
#31-03, #32-03

Type C5b

120 sq m / 1,377 sq ft
#14-03, #15-03



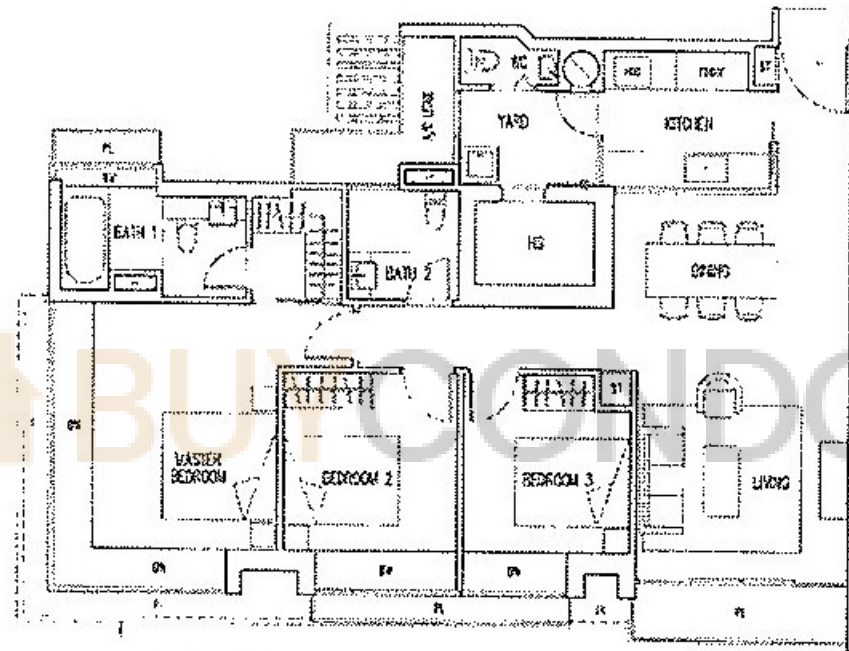
All plans are in A, with, and to be used for charge as they are approved by the relevant authorities. All floor areas are given in m² and sq ft. It is given in m² and sq ft.

3-Bedroom Type C4c

118 sq m / 1,270 sq ft
#06-03 to #09-05

Type C4d

124 sq m / 1,334 sq ft
#18-05 to #20-05



Site of Type C4d (partial)

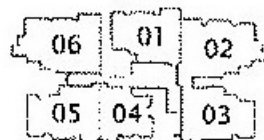
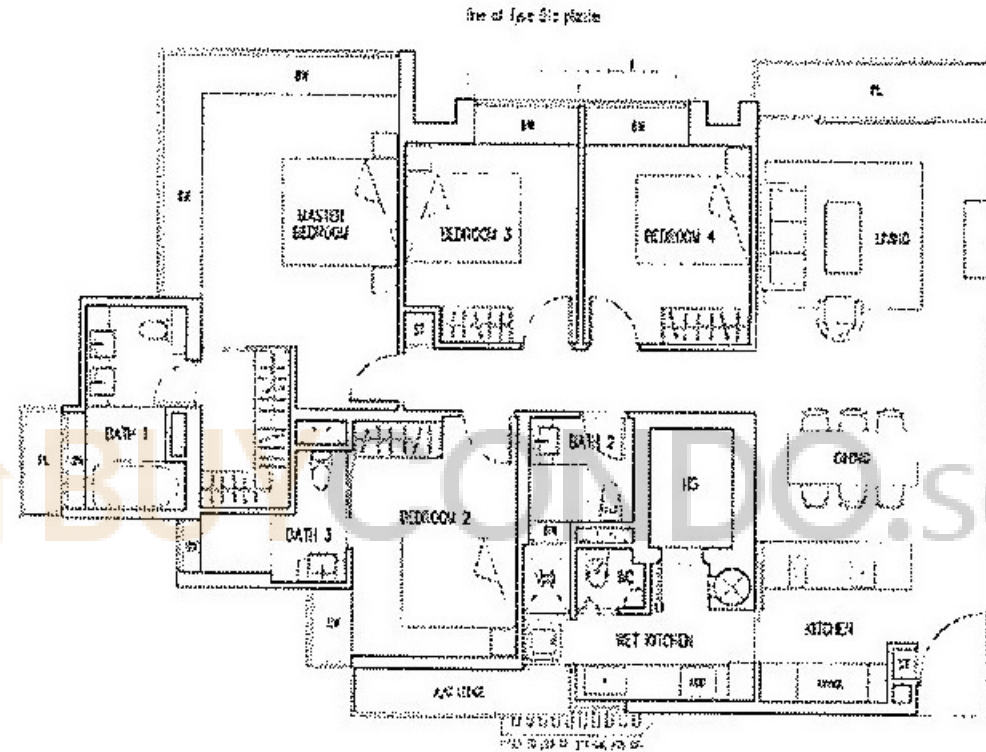


4-Bedroom Type D1a

146 sq m / 1,571 sq ft
#31-06 to #35-06

Type D1c

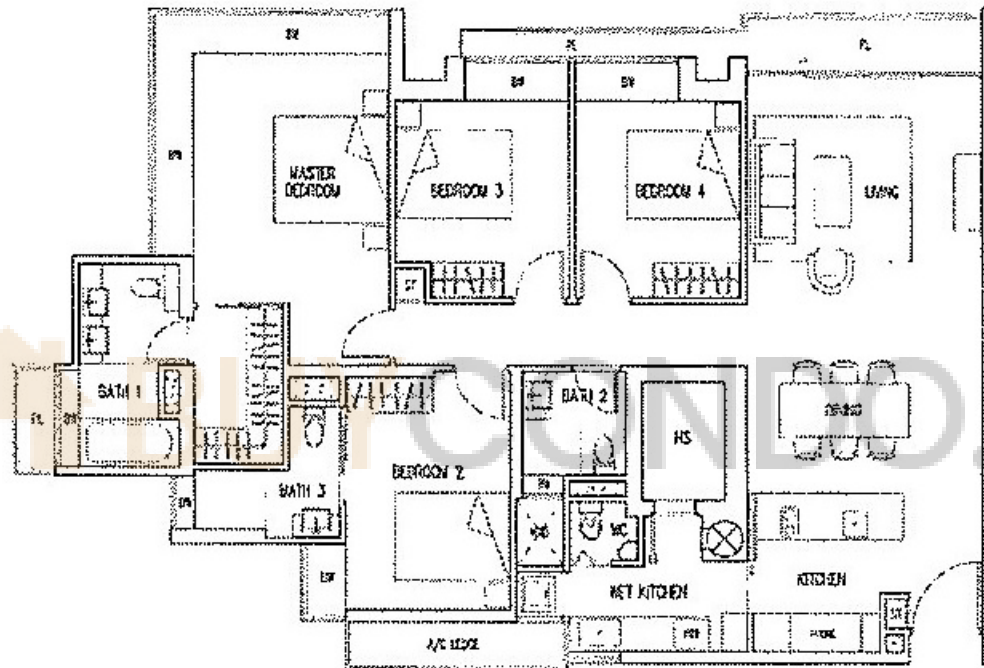
148 sq m / 1,593 sq ft
#16-06 to #27-06



All plans are for information and subject to change, to be approved by the relevant authorities. All dimensions are approximate and subject to government regulations.

4-Bedroom Type D1b

149 sq m / 1,603 sq ft
#28-06 to #30-06

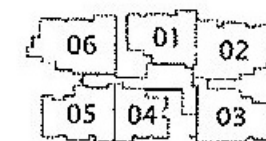
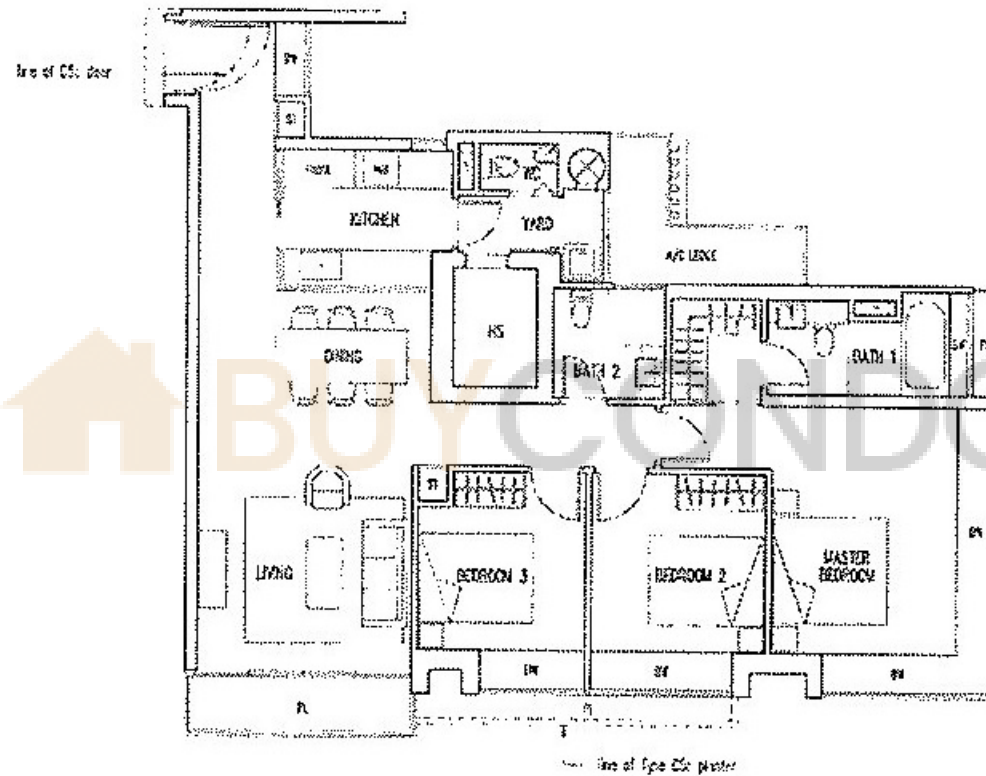


3-Bedroom Type C5c

123 sq m / 1,323 sq ft
 #08-03
 #21-03 to #25-03
 #28-03 to #30-03

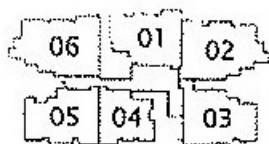
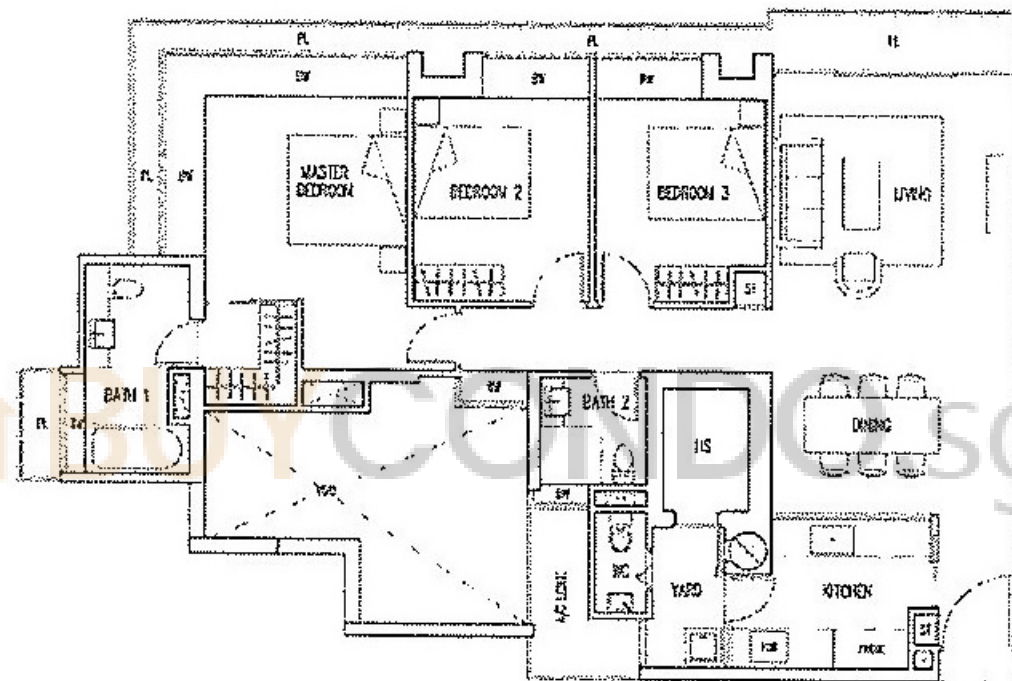
Type C5d

119 sq m / 1,280 sq ft
 #33-03 to #35-03



3-Bedroom Type C1c

131 sq m / 1,410 sq ft
#12-06 to #15-06



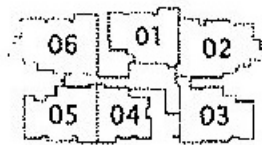
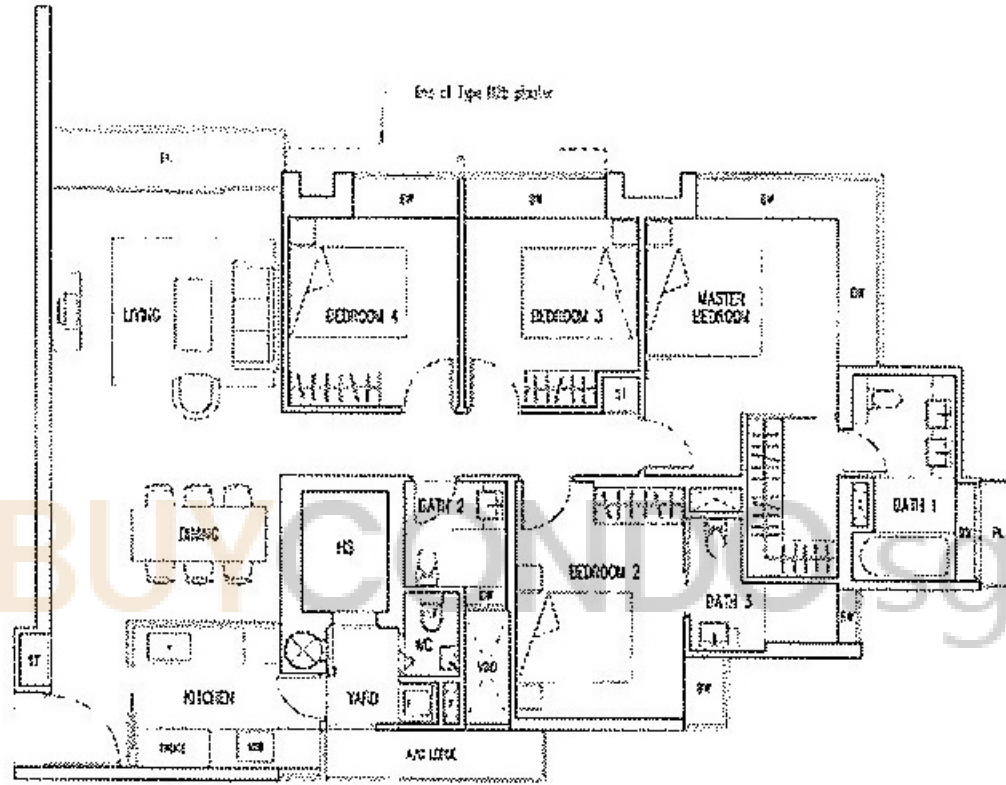
All plans are not to scale and subject to changes as may be approved by the relevant authorities. All floor areas are approximate only and are subject to government verification.

4-Bedroom Type D2a

136 sq m / 1,463 sq ft
#18-02 to #20-02

Type D2b

139 sq m / 1,496 sq ft
#21-02 to #23-02
#27-02 to #32-02



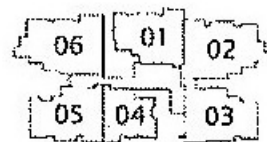
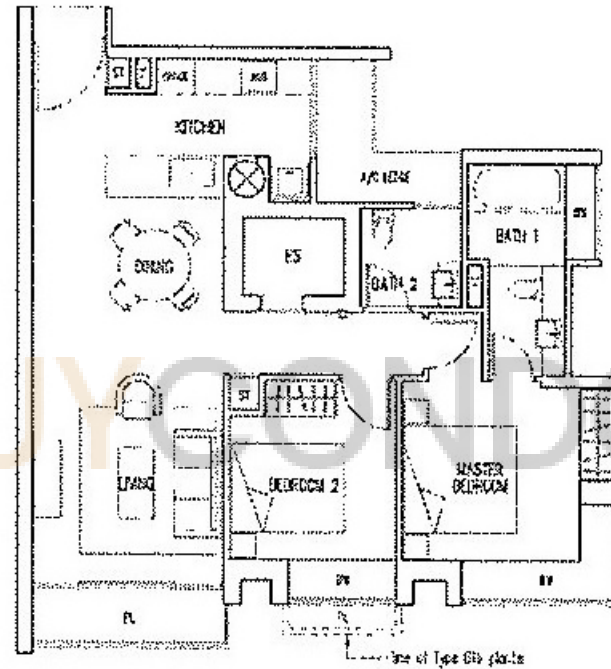
All plans are subject to change without notice. All dimensions are approximate and are subject to ground conditions.

2-Bedroom Type B1a

84 sq m / 904 sq ft
#06-04 to #09-04
#22-04

Type B1b

85 sq m / 914 sq ft
#10-04 to #12-04
#15-04 to #21-04



All plans are for general and subject to changes as they are approved by the relevant authorities. All dimensions are approximate only and are subject to government's recording.

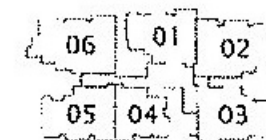
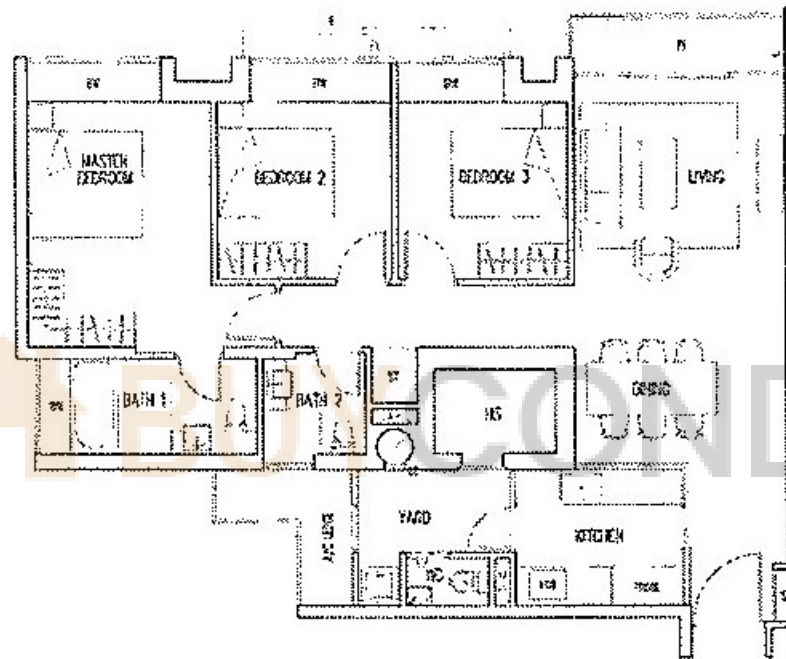
3-Bedroom Type C3a

111 sq m / 1,194 sq ft
#08-01, #09-01
#13-01 to #15-01

Type C3b

113 sq m / 1,216 sq ft
#10-01 to #12-01
#16-01 to #32-01

Line of Type C3b starts

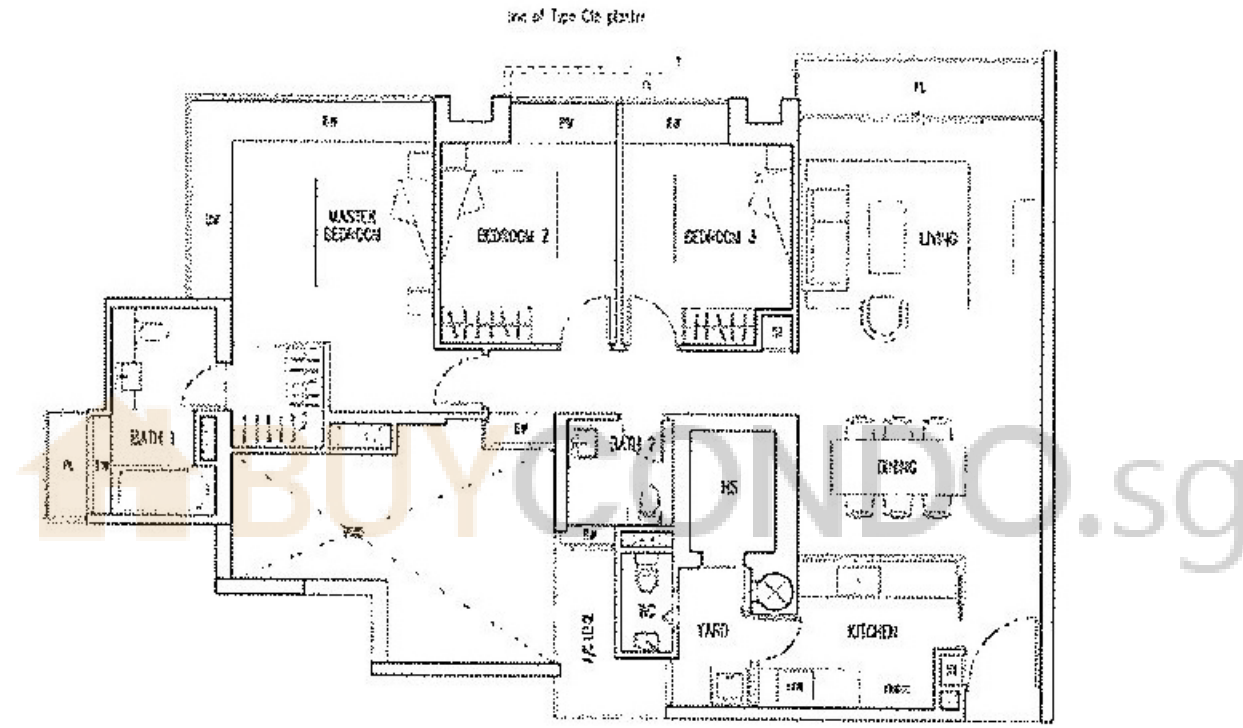


3-Bedroom Type C1a

123 sq m / 1,323 sq ft
#05-06 to #09-06

Type C1b

126 sq m / 1,356 sq ft
#10-06, #11-06

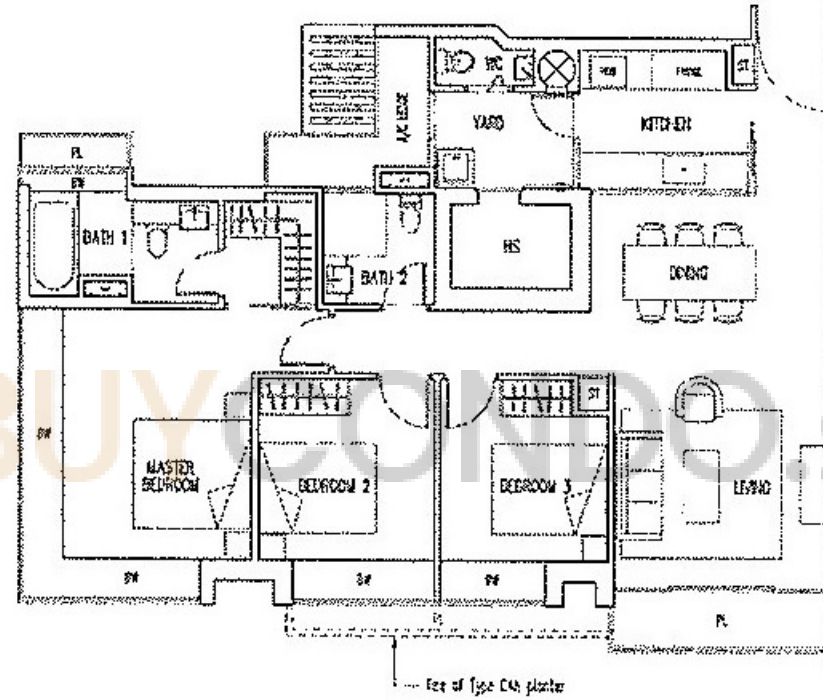


3-Bedroom Type C4a

116 sq m / 1,248 sq ft
#12-05
#15-05 to #17-05
#21-05, #22-05

Type C4b

119 sq m / 1,280 sq ft
#10-05, #11-05

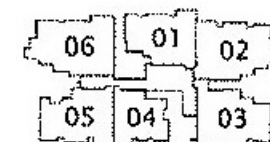
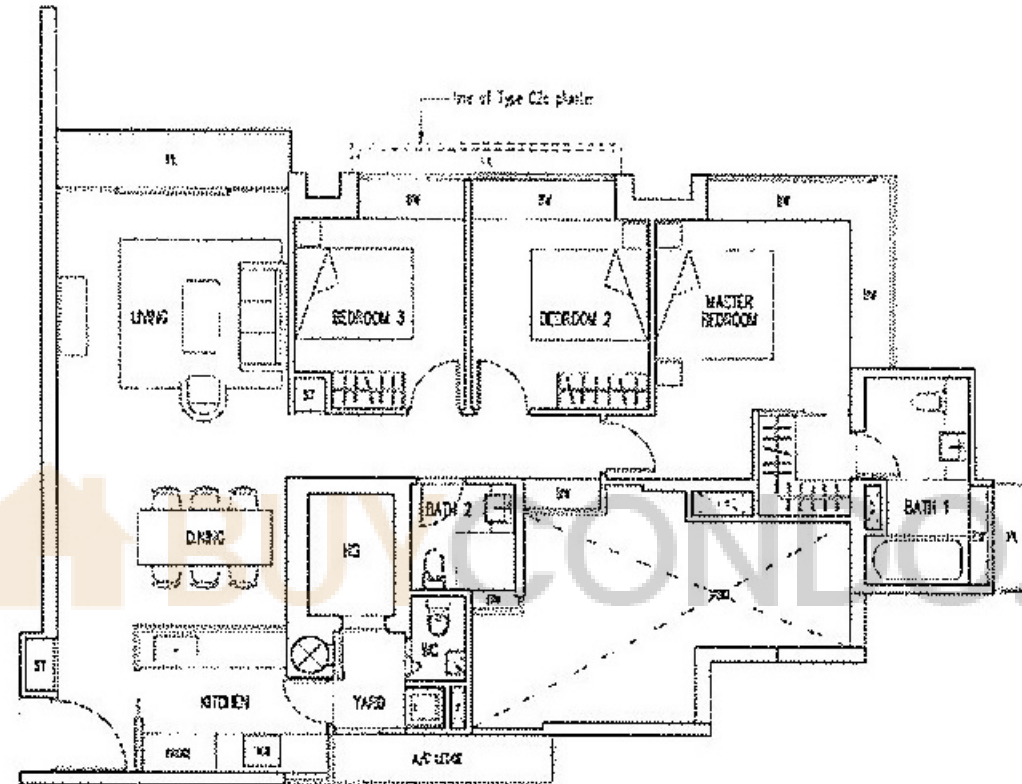


3-Bedroom Type C2a

118 sq m / 1,270 sq ft
#12-02, #13-02

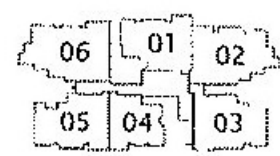
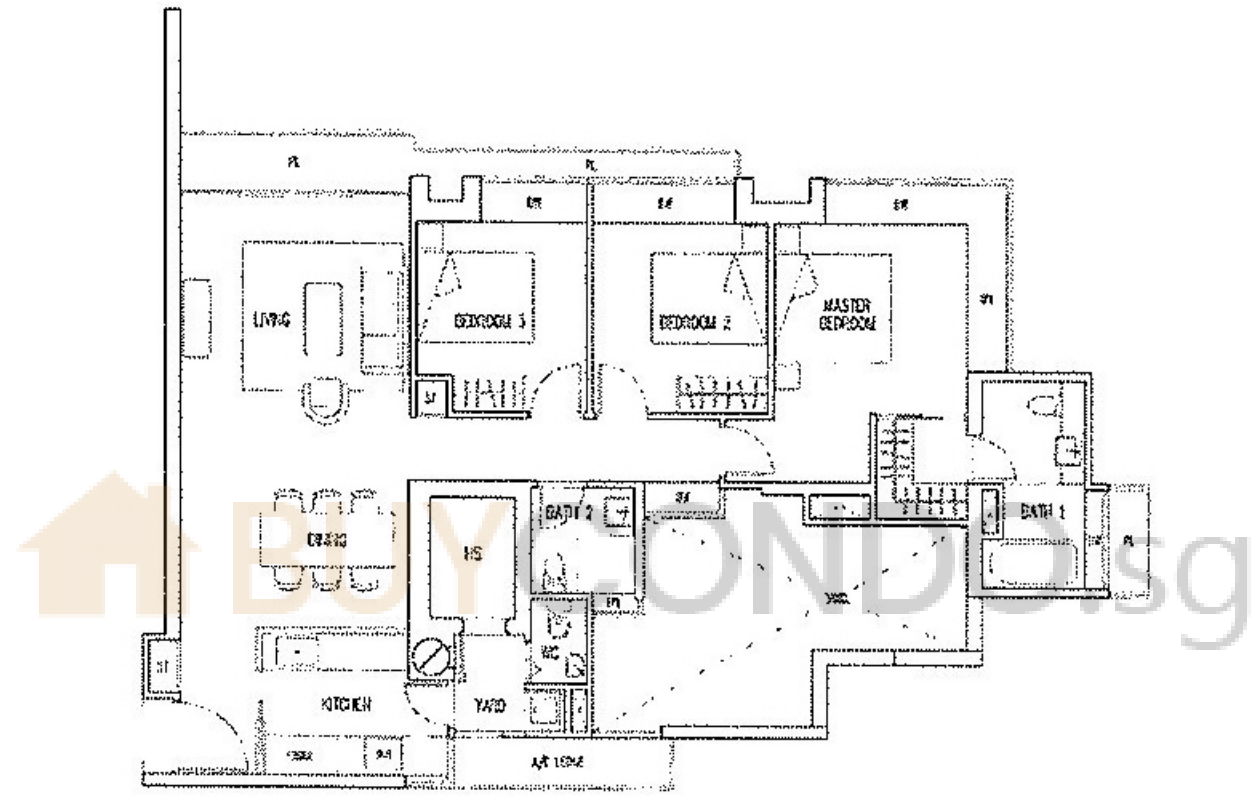
Type C2c

120 sq m / 1,291 sq ft
#08-02, #09-02



3-Bedroom Type C2b

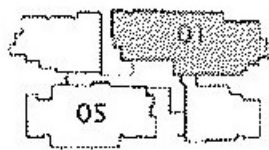
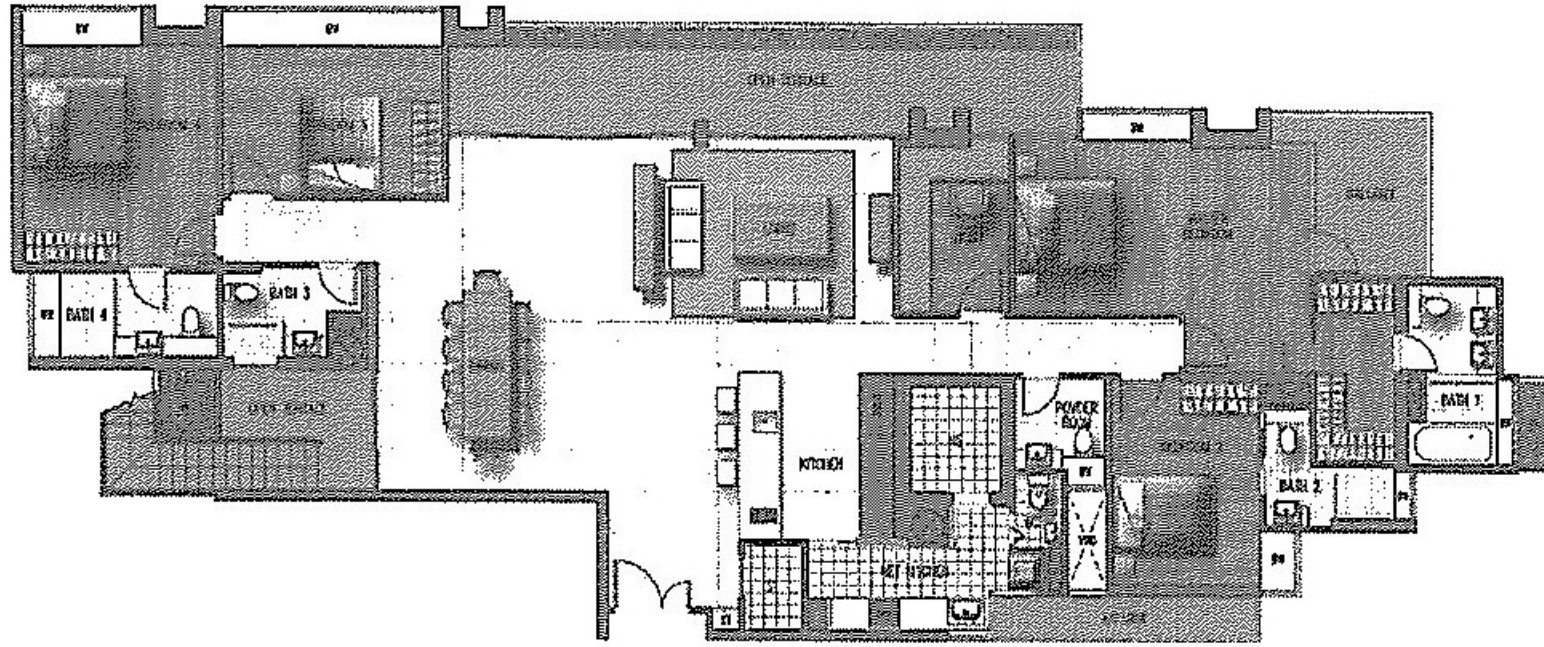
121 sq m / 1,302 sq ft
#10-02, #11-02
#14-02, #15-02



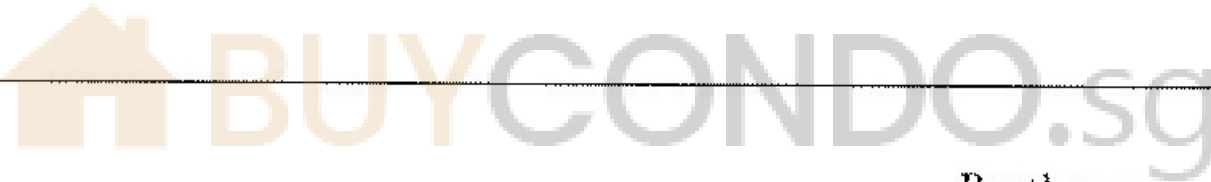
All plans are for illustrative purposes only and are subject to change without notice. All dimensions are approximate and may vary slightly from actual measurements.

Penthouse
Type PH2(Lower Storey)

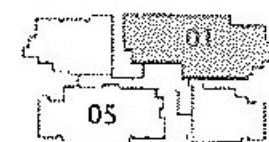
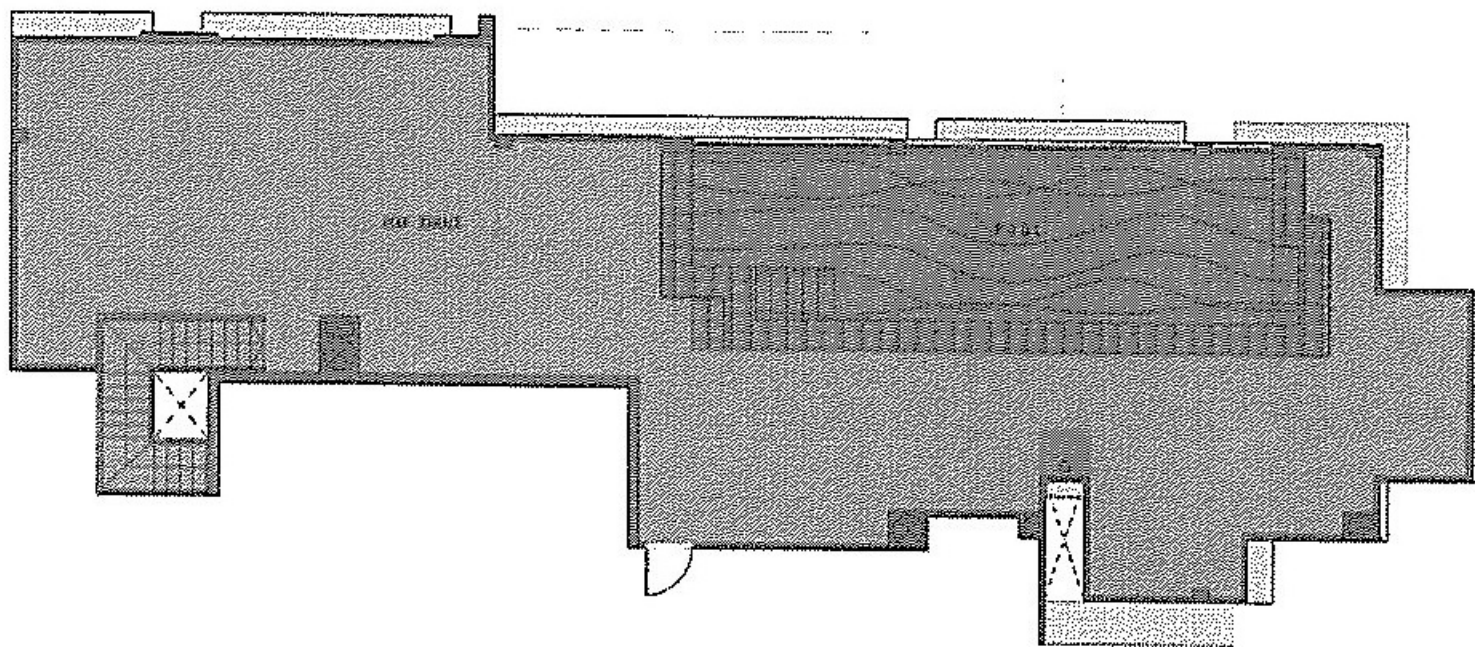
453 sq m / 4,876 sq ft
#36-01



All plans are for guide only and subject to change without notice. Approval by the relevant authorities. All floor areas are approximate and may vary from actual measurements.



Penthouse
Type PH2(Upper Storey)



All plans are for guide only and subject to change without notice. Approval by the relevant authorities. All floor areas are approximate and may vary from actual measurements.

Penthouse
Type PH1 (Lower Storey)

386 sq m / 4,154 sq ft
#36-05

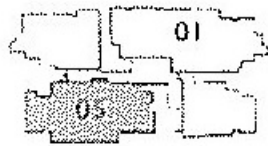
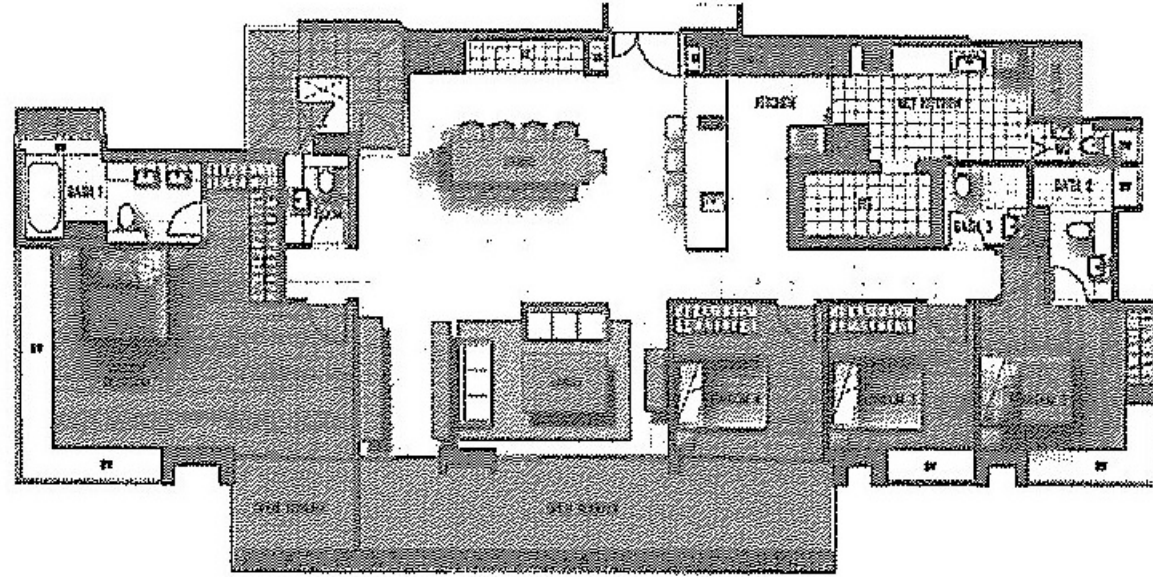
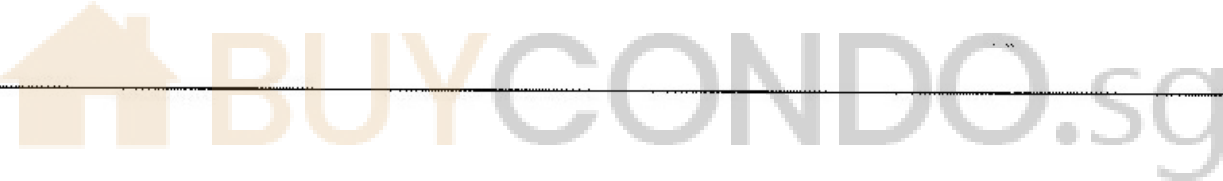


Diagrama ini adalah untuk tujuan makluman sahaja. Semua maklumat adalah berdasarkan maklumat yang diberikan oleh pengembang. Semua maklumat adalah berdasarkan maklumat yang diberikan oleh pengembang. Semua maklumat adalah berdasarkan maklumat yang diberikan oleh pengembang.



Penthouse
Type PH1 (Upper Storey)

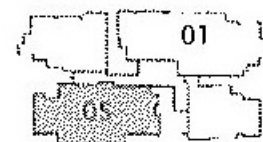
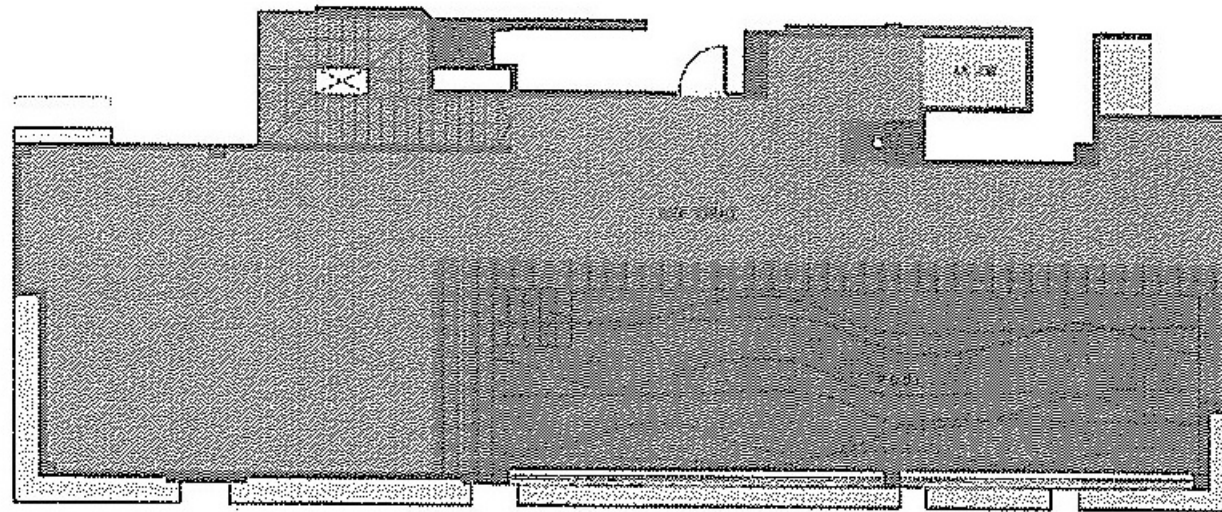
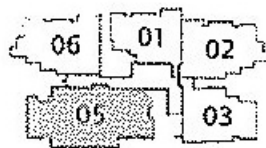
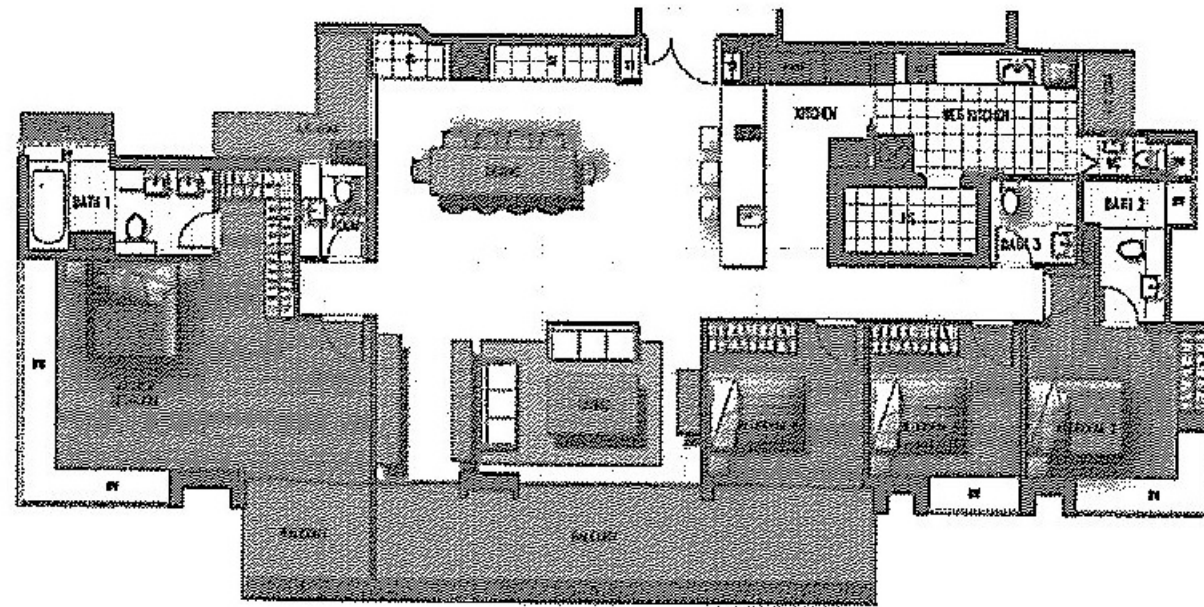


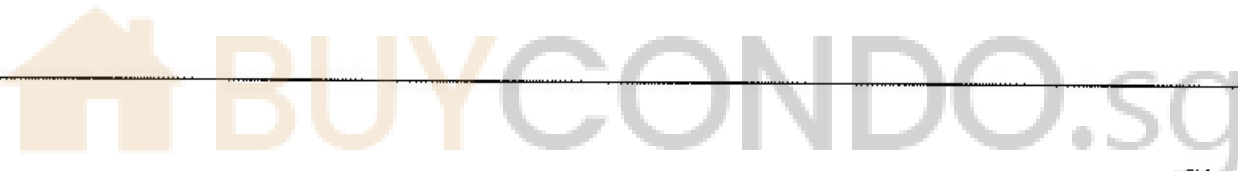
Diagrama ini adalah untuk tujuan makluman sahaja. Semua maklumat adalah berdasarkan maklumat yang diberikan oleh pengembang. Semua maklumat adalah berdasarkan maklumat yang diberikan oleh pengembang. Semua maklumat adalah berdasarkan maklumat yang diberikan oleh pengembang.

Sky Suite
Type S1

223 sq m / 2,400 sq ft
#25-05 to #35-05

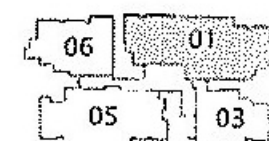
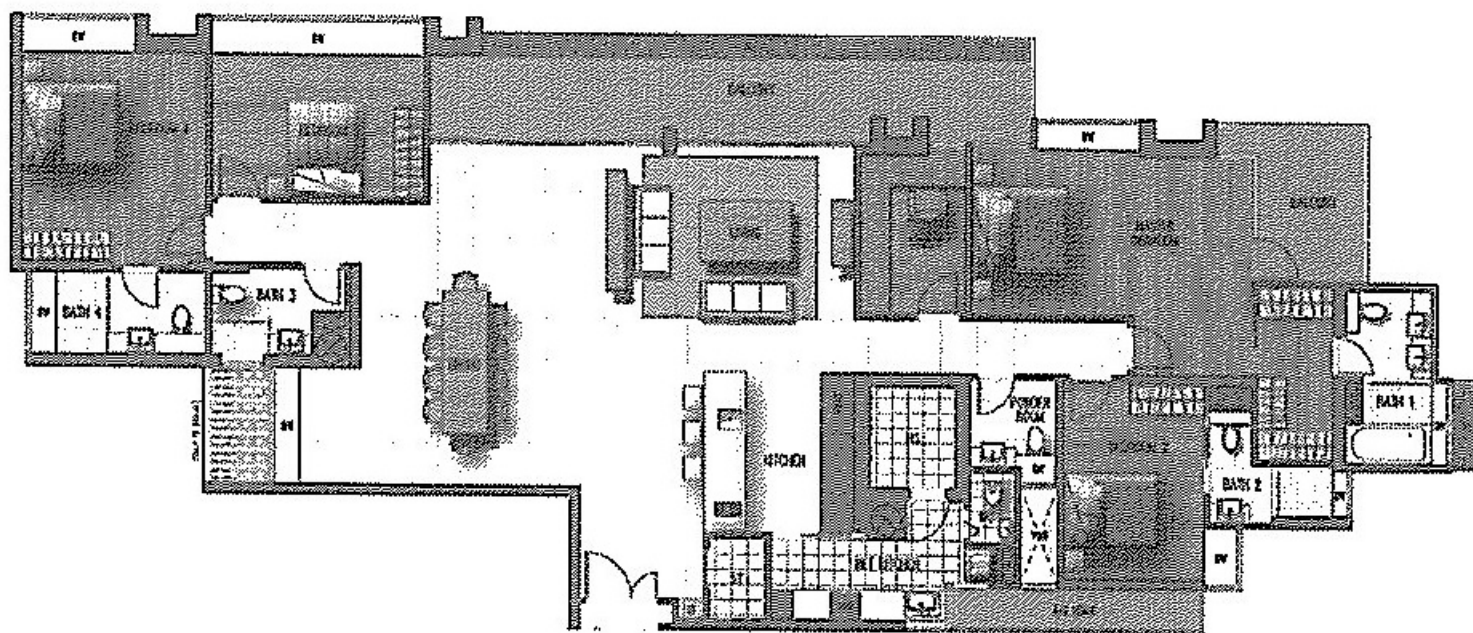


All plans are for information and subject to change as they are approved by the relevant authorities. All floor areas are approximate only and may differ to the actual measurements.



Sky Suite
Type S2

256 sq m / 2,755 sq ft
#33-01 to #35-01



All plans are for information and subject to change as they are approved by the relevant authorities. All floor areas are approximate only and may differ to the actual measurements.